

**STATE  
AGENCY  
TRACTS**

**TRACT 33241 - STATE AGENCY - Webster Parish, Louisiana**

Those certain tracts of land belonging to and not under mineral lease from the Webster Parish Police Jury, on February 14, 2001, and being all of the roads, streets and alleys owned or claimed by the Webster Parish Police Jury in Section 20 (Parcel A - 10.48 acres, more or less), Section 27 (Parcel B - 7.71 acres, more or less) and Section 28 (Parcel C - 17.71 acres, more or less), Section 32 (Parcel D - 3.95 acres, more or less), Section 33 (Parcel E - 15.95 acres more or less) and Section 34 (Parcel F - 8.73 acres more or less) all in Township 17 North, Range 10 West, excluding beds and bottoms of all navigable waters, containing approximately **64.53 acres**, as shown outlined in red on a plat on file in the Office of Mineral Resources, Department of Natural Resources. All bearings, distances and coordinates are based on Louisiana Coordinate System of 1927 (South Zone).

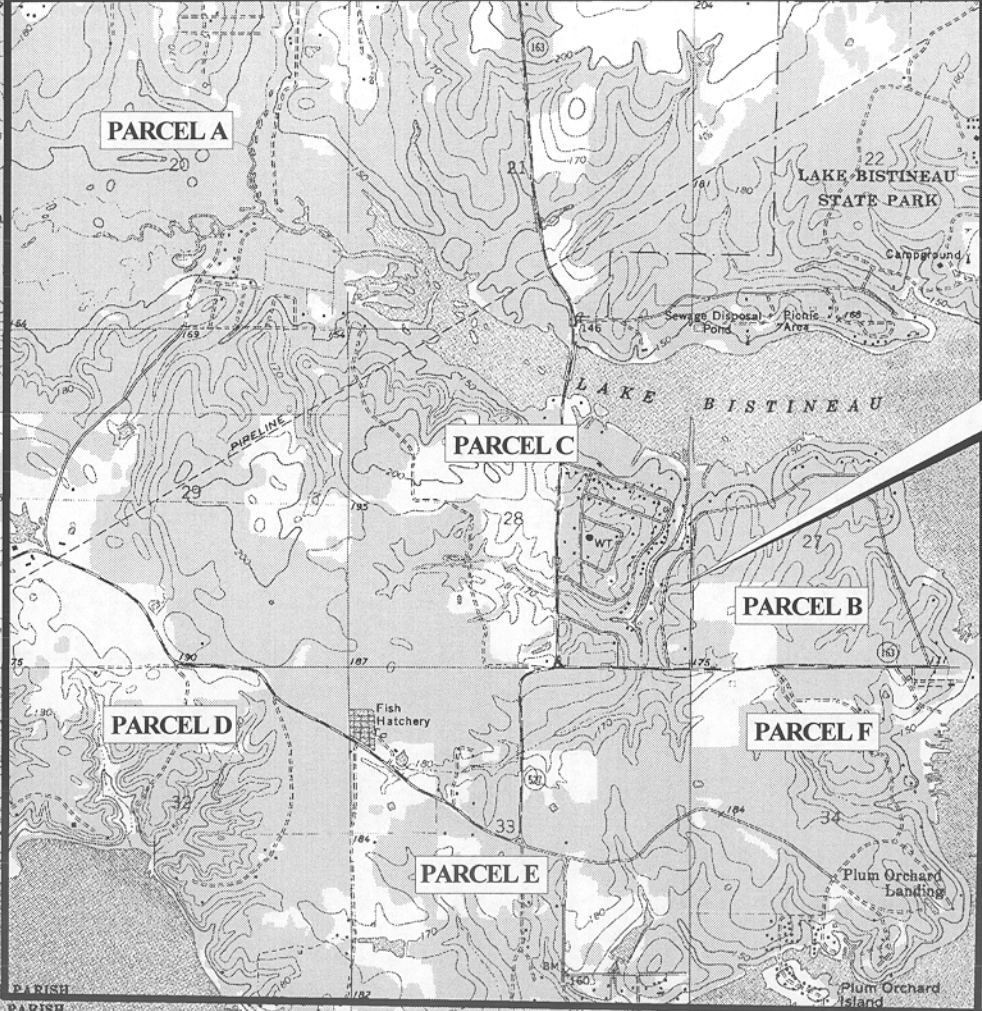
Applicant: Clark Energy Company, Inc. to Agency and by Resolution from the Webster Parish Police Jury authorizing the Mineral Board to act in its behalf.

Bidder	Cash Payment	Price / Acre	Rental	Oil	Gas	Other



**TR33241**  
**64.53 +/- AGGREGATE ACS.**  
**FEB., 2001**

Parcel A - 10.48 +/- ACS.  
Parcel B - 7.71 +/- ACS.  
Parcel C - 17.71 +/- ACS.  
Parcel D - 3.95 +/- ACS.  
Parcel E - 15.95 +/- ACS.  
Parcel F - 8.73 +/- ACS.

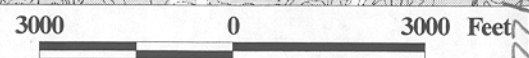


**T 17 N - R 10 W**

**T 16 N - R 10 W**

**WEBSTER PARISH**

**BOSSIER PARISH**



**TRACT 33242 - STATE AGENCY - DeSoto and Red River Parishes, Louisiana**

The State Mineral Board acting on behalf of the DeSoto Parish School Board and the Red River Parish School Board, pursuant to Resolutions adopted by those bodies and in accordance with Louisiana Revised Statutes 30:121-136 and 151-156, as amended, and Article 12, Section 18 of the Louisiana Constitution of 1921, as amended, which by Section 16 (A) 9, and 16 (B) of Article XIV of the 1974 Constitution is continued as a statute subject to arrangement in proper statutory form or modification provided by law, advertises the following described lands not under mineral lease on February 14, 2001: The East Half of Section 16, Township 12 North, Range 11 West, said township situated in DeSoto and Red River Parishes, Louisiana, excluding beds and bottoms of all navigable waters located in said section, containing approximately 320 acres, as shown outlined in red on a plat on file in the Office of Mineral Resources, Department of Natural Resources. All bearings, distances and coordinates are based on Louisiana Coordinate System of 1927 (South Zone).

NOTE: The boundary description and plat for this tract as shown and as advertised were supplied by the nominating party and have not been checked for accuracy by the staff of the Office of Mineral Resources. Anything which may affect the acreage, the shape or the location of the tract, such as non-closure of or incorrect X, Y coordinates or title disputed acreage, or which may affect the status of the tract for leasing, such as overlap of prior leases or nominated tracts, or which may affect potential operations on leases taken, such as inclusion in areas under the jurisdiction of the Department of Wildlife and Fisheries, will not be specifically determined unless and until a bid on this tract is accepted by the Mineral Board; which bid will be accepted on a per acre basis and which acceptance will be conditional upon such specific determinations being made. Once a bid is conditionally accepted by the Mineral Board, the staff will, within a period following the date of the lease sale, determine the acreage, shape and location of the potential lease area of the tract, the status for leasing of all or any portion thereof, and any conditions which may affect potential operations thereon. These determinations may render all or a portion of the bid area unleaseable or may increase or decrease the State claimed acreage such that the total bonus/rental ultimately required may either exceed the bonus/rental paid at the lease sale, which will require additional payment by the successful bidder, or allow the successful bidder a refund of excessive payment. The successful bidder will be notified of the determinations by the staff and given an opportunity to view the bid area acreage, configuration and location as it has been specifically determined. If all or a portion of the bid area is unleaseable due to overlap of an existing lease, the successful bidder will be given an opportunity to accept or reject a new lease on that portion of the bid area which is not unleaseable. If rejected, the bid and all monies accompanying the bid will be returned to the successful bidder and no lease will be issued. In all other cases a new lease will be issued and any additional per acre bonus/rental, 10% administration fee or \$10 and \$5 per acre fees due as a result of staff determination of more State acreage in the bid area than determined by the successful bidder will be paid prior to the lease

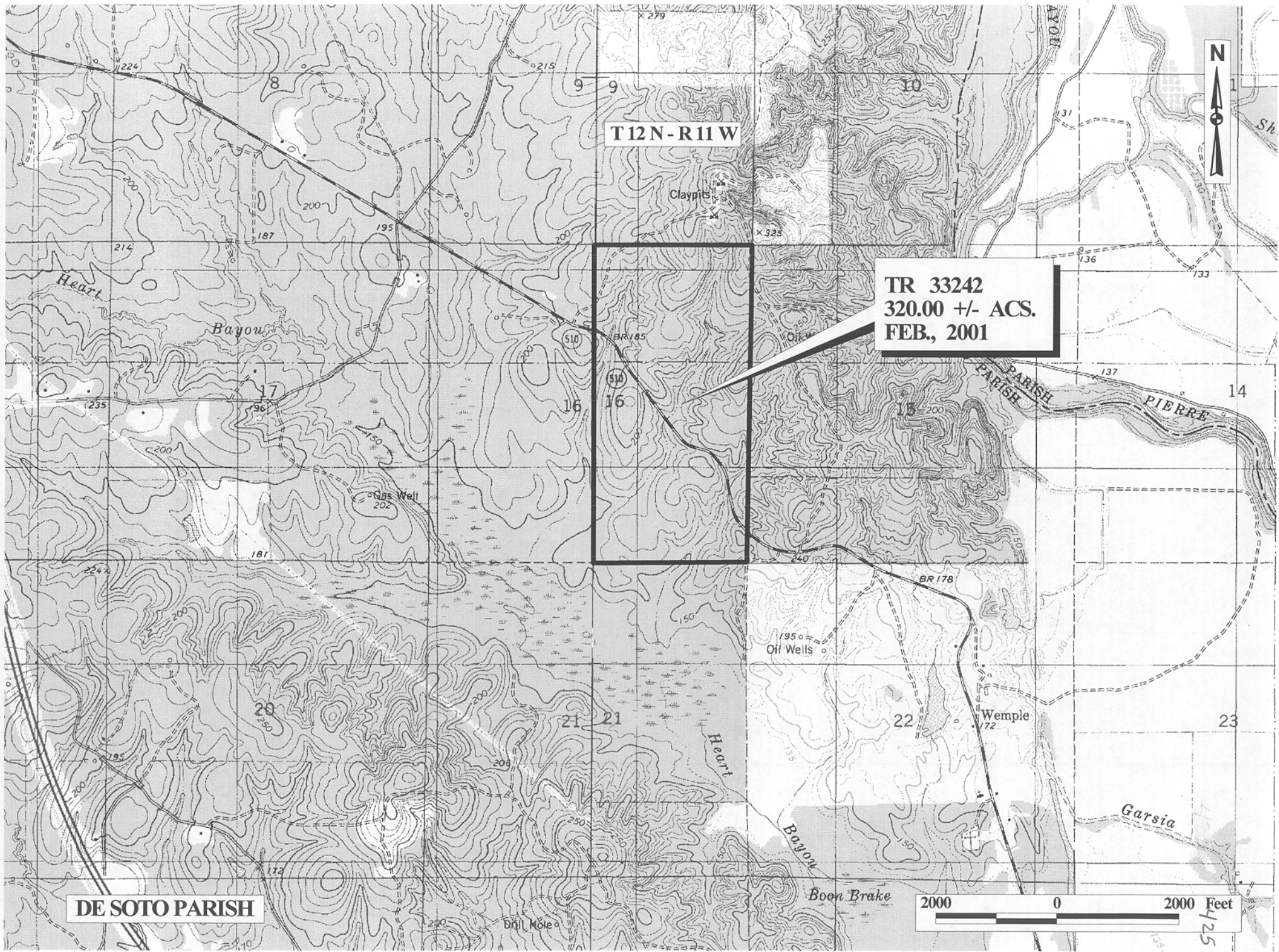
being issued. A determination of less State acreage in the bid area will result in a return to the successful bidder of any overpayment.

NOTE: "Lessors acknowledge that said Township 12 North, Range 11 West, is located 77.80% in the Parish of DeSoto and 22.20% in the Parish of Red River; and Lessee is authorized and directed to pay any and all rentals and royalties which may accrue under the terms of this lease to Lessors separately and in the following proportions: DeSoto Parish School Board - 77.80% and Red River Parish School Board - 22.20%" and "prospective bidders are hereby placed on notice that execution by the State Mineral Board of oil, gas and mineral lease on behalf of the DeSoto Parish School Board and the Red River Parish School Board on the above described portion of section shall not be construed as a waiver by the State Mineral Board of any rights that it may have to lease for and on behalf of the State of Louisiana any navigable water bottoms that might be included within said portion of said section."

NOTE: Buckhorn Hunting Club has a current lease on the above described property for hunting purposes only.

Applicant: Winchester Production Company to Agency and by Resolution from the DeSoto Parish School Board and the Red River Parish School Board authorizing the Mineral Board to act in its behalf.

Bidder	Cash Payment	Price / Acre	Rental	Oil	Gas	Other



T12N-R11W

TR 33242  
320.00 +/- ACS.  
FEB., 2001

DE SOTO PARISH

2000 0 2000 Feet

125

**TRACT 33243 - STATE AGENCY - Ouachita Parish, Louisiana**

A certain tract of land belonging to and not under mineral lease from the Louisiana Department of Wildlife and Fisheries, on February 14, 2001, being more fully described as follows: All of Section 24, Township 17 North, Range 4 East, Ouachita Parish, Louisiana, **LESS AND EXCEPT** the Northwest Quarter of the Northwest Quarter and all of Section 19, Township 17 North, Range 5 East, Ouachita Parish, Louisiana, **LESS AND EXCEPT** any portion of State Agency Lease No. 6842, as amended, that may lie within the above described tract as of December 4, 2000, excluding beds and bottoms of all navigable waters, containing approximately 1,135.53 aggregate acres and 567.77 net acres, as shown outlined in red on a plat on file in the Office of Mineral Resources, Department of Natural Resources.

NOTE: The boundary description and plat for this tract as shown and as advertised were supplied by the nominating party and have not been checked for accuracy by the staff of the Office of Mineral Resources. Anything which may affect the acreage, the shape or the location of the tract, such as non-closure of or incorrect X, Y coordinates or title disputed acreage, or which may affect the status of the tract for leasing, such as overlap of prior leases or nominated tracts, or which may affect potential operations on leases taken, such as inclusion in areas under the jurisdiction of the Department of Wildlife and Fisheries, will not be specifically determined unless and until a bid on this tract is accepted by the Mineral Board; which bid will be accepted on a per acre basis and which acceptance will be conditional upon such specific determinations being made. Once a bid is conditionally accepted by the Mineral Board, the staff will, within a period following the date of the lease sale, determine the acreage, shape and location of the potential lease area of the tract, the status for leasing of all or any portion thereof, and any conditions which may affect potential operations thereon. These determinations may render all or a portion of the bid area unleaseable or may increase or decrease the State claimed acreage such that the total bonus/rental ultimately required may either exceed the bonus/rental paid at the lease sale, which will require additional payment by the successful bidder, or allow the successful bidder a refund of excessive payment. The successful bidder will be notified of the determinations by the staff and given an opportunity to view the bid area acreage, configuration and location as it has been specifically determined. If all or a portion of the bid area is unleaseable due to overlap of an existing lease, the successful bidder will be given an opportunity to accept or reject a new lease on that portion of the bid area which is not unleaseable. If rejected, the bid and all monies accompanying the bid will be returned to the successful bidder and no lease will be issued. In all other cases a new lease will be issued and any additional per acre bonus/rental, 10% administration fee or \$10 and \$5 per acre fees due as a result of staff determination of more State acreage in the bid area than determined by the successful bidder will be paid prior to the lease being issued. A determination of less State acreage in the bid area will result in a return to the successful bidder of any overpayment.

NOTE: This tract is located within the Russell Sage Wildlife Management

Area. Any operations on said tract shall be coordinated with the Louisiana Department of Wildlife and Fisheries. Special Rules and Regulations have been promulgated by the Louisiana Department of Wildlife and Fisheries for the protection of the game and wildlife for some management areas. Any lease awarded by the Board on said tract shall be subject to any applicable Rules and Regulations of said management area. Copies of these Rules and Regulations may be obtained from the Louisiana Department of Wildlife and Fisheries through the Assistant Secretary, Office of Wildlife, upon request.

- NOTE:
1. No activities will be allowed without written authorization of the Louisiana Department of Wildlife and Fisheries. All projects will be coordinated and approved by the Russell Sage Wildlife Management Area Supervisor prior to any activities on the wildlife management area.
  2. Proposed projects will be evaluated on a case by case basis. Modifications to proposed project features including but not limited to access routes, well sites, flowlines and appurtenant structures may be required by the Louisiana Department of Wildlife and Fisheries.
  3. Compliance with the Russell Sage Management Area and mineral regulations will be required unless otherwise specified by the Department.
  4. Compensatory mitigation will be required to offset unavoidable habitat impacts.
  5. Removal of all structures, facilities and equipment will be required within 120 days of abandonment unless otherwise agreed to by the Department.
  6. No activities will be allowed during the hunting season unless approved by the Department.
  7. Prior to submitting applications for wetland permits to Federal and State permitting agencies, the lease holder shall coordinate project details with the Department.

NOTE: The Department will require a minimum bonus of \$150.00 per acre and a minimum royalty of 25%.

Applicant: Caruthers Producing Company, Inc. to Agency and by Letter of Authorization authorizing the Mineral Board to act in its behalf.