

TRACT 33139 - PORTION OF BLOCK 37, EUGENE ISLAND AREA, REVISED, St. Mary and Terrebonne Parishes, Louisiana

That portion of Block 37, Eugene Island Area, Revised, St. Mary and Terrebonne Parishes, Louisiana, belonging to the State of Louisiana and not under mineral lease on February 14, 2001, described as follows: Beginning at the Northwest corner of Block 37, Eugene Island Area, Revised, having Coordinates of X = 1,984,977.84 and Y = 226,396.84; thence East 15,022.16 feet on the North line of said Block 37 to its Northeast corner; thence South 7,249.29 feet on the East line of said Block 37 to a point having Coordinates of X = 2,000,000.00 and Y = 219,147.55; thence West 15,022.16 feet to a point on the West line of said Block 37; thence North 7,249.29 feet on the West line of said Block 37 to the point of beginning, containing approximately **2,500.00 acres**, as shown outlined in red on a plat on file in the Office of Mineral Resources, Department of Natural Resources, as provided by the applicant. All bearings, distances and coordinates are based on Louisiana Coordinate System of 1927 (South Zone).

NOTE: The boundary description and plat for this tract as shown and as advertised were supplied by the nominating party and have not been checked for accuracy by the staff of the Office of Mineral Resources. Anything which may affect the acreage, the shape or the location of the tract, such as non-closure of or incorrect X, Y coordinates or title disputed acreage, or which may affect the status of the tract for leasing, such as overlap of prior leases or nominated tracts, or which may affect potential operations on leases taken, such as inclusion in areas under the jurisdiction of the Department of Wildlife and Fisheries, will not be specifically determined unless and until a bid on this tract is accepted by the Mineral Board; which bid will be accepted on a per acre basis and which acceptance will be conditional upon such specific determinations being made. Once a bid is conditionally accepted by the Mineral Board, the staff will, within a period following the date of the lease sale, determine the acreage, shape and location of the potential lease area of the tract, the status for leasing of all or any portion thereof, and any conditions which may affect potential operations thereon. These determinations may render all or a portion of the bid area unleaseable or may increase or decrease the State claimed acreage such that the total bonus/rental ultimately required may either exceed the bonus/rental paid at the lease sale, which will require additional payment by the successful bidder, or allow the successful bidder a refund of excessive payment. The successful bidder will be notified of the determinations by the staff and given an opportunity to view the bid area acreage, configuration and location as it has been specifically determined. If all or a portion of the bid area is unleaseable due to overlap of an existing lease, the successful bidder will be given an opportunity to accept or reject a new lease on that portion of the bid area which is not unleaseable. If rejected, the bid and all monies accompanying the bid will be returned to the successful bidder and no lease will be issued. In all other cases a new lease will be issued and any additional per acre bonus/rental, 10% administration fee or \$10 and \$5 per acre fees due as a result of staff determination of more State acreage in the bid area than determined by the successful bidder will be paid prior to the lease

being issued. A determination of less State acreage in the bid area will result in a return to the successful bidder of any overpayment.

NOTE: The above described tract is in the vicinity of existing shell reefs where drilling and dredging operations must be conducted in strict conformity with the regulations adopted by the Louisiana Department of Wildlife and Fisheries and/or the U.S. Corps of Engineers, U.S. Army.

NOTE: The State of Louisiana does hereby reserve, and this lease shall be subject to, the imprescriptible right of surface use in the nature of a servitude in favor of the Department of Natural Resources, including its Offices and Commissions, for the sole purpose of implementing, constructing, servicing and maintaining approved coastal zone management and/or restoration projects. Utilization of any and all rights derived under this lease by the mineral lessee, its agents, successors or assigns, shall not interfere with nor hinder the reasonable surface use by the Department of Natural Resources, its Offices or Commissions, as hereinabove reserved.

Applicant: Kevin Caliva & Associates, Ltd.

Bidder	Cash Payment	Price / Acre	Rental	Oil	Gas	Other

BIK. 36

P. O. B.
X=1,984,977.84
Y= 226,396.84

BIK. 38

TR 33139
2,500.00 +/- ACS.
FEB., 2001

±2500.00 Acres

ST. MARY PARISH
TERREBONNE PARISH

BIK. 37

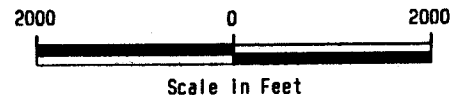
EUGENE ISLAND AREA, REVISED

SHIP SHOAL AREA

BIK. 1

GULF OF MEXICO

St. Mary & Terrebonne Parishes, Louisiana



TRACT 33140 - PORTION OF BLOCK 37, EUGENE ISLAND AREA, REVISED, St. Mary and Terrebonne Parishes, Louisiana

That portion of Block 37, Eugene Island Area, Revised, St. Mary and Terrebonne Parishes, Louisiana, belonging to the State of Louisiana and not under mineral lease on February 14, 2001, described as follows: Beginning at the Southeast corner of Block 37, Eugene Island Area, Revised, having Coordinates of X = 2,000,000.00 and Y = 211,898.26; thence West 8,868.49 feet on the South line of said Block 37 to a point having Coordinates of X = 1,991,131.51 and Y = 211,898.26; thence Northwesterly on a straight line to a point having Coordinates of X = 1,987,527 and Y = 215,292; thence Northwesterly on an arc having a radius of 18,240.60 feet and a center at X = 2,000,030 and Y = 228,573 to a point having Coordinates of X = 1,985,881 and Y = 217,061; thence Northwesterly on a straight line to a point on the West line of said Block 37 having Coordinates of X = 1,984,977.84 and Y = 218,171.11; thence North 976.44 feet on the West line of said Block 37 to a point having Coordinates of X = 1,984,977.84 and Y = 219,147.55; thence East 15,022.16 feet to a point on the East line of said Block 37 having Coordinates of X = 2,000,000.00 and Y = 219,147.55; thence South 7,249.29 feet on the East line of said Block 37 to the point of beginning, containing approximately **2,080.85 acres**, as shown outlined in red on a plat on file in the Office of Mineral Resources, Department of Natural Resources, as provided by the applicant, **LESS AND EXCEPT** that portion thereof, if any, which is more than three nautical miles from the coast line as determined by the Report of the Special Master in the litigation in the Supreme Court of the United States styled United States v. State of Louisiana et al No. 9 Original, said three mile line as set out in the June, 1975, decree of the Supreme Court. All bearings, distances and coordinates are based on Louisiana Coordinate System of 1927 (South Zone).

NOTE: The boundary description and plat for this tract as shown and as advertised were supplied by the nominating party and have not been checked for accuracy by the staff of the Office of Mineral Resources. Anything which may affect the acreage, the shape or the location of the tract, such as non-closure of or incorrect X, Y coordinates or title disputed acreage, or which may affect the status of the tract for leasing, such as overlap of prior leases or nominated tracts, or which may affect potential operations on leases taken, such as inclusion in areas under the jurisdiction of the Department of Wildlife and Fisheries, will not be specifically determined unless and until a bid on this tract is accepted by the Mineral Board; which bid will be accepted on a per acre basis and which acceptance will be conditional upon such specific determinations being made. Once a bid is conditionally accepted by the Mineral Board, the staff will, within a period following the date of the lease sale, determine the acreage, shape and location of the potential lease area of the tract, the status for leasing of all or any portion thereof, and any conditions which may affect potential operations thereon. These determinations may render all or a portion of the bid area unleaseable or may increase or decrease the State claimed acreage such that the total bonus/rental ultimately required may either exceed the bonus/rental paid at the lease sale, which will require additional payment by the successful bidder, or allow the successful bidder a refund of excessive payment. The successful bidder will be notified

of the determinations by the staff and given an opportunity to view the bid area acreage, configuration and location as it has been specifically determined. If all or a portion of the bid area is unleaseable due to overlap of an existing lease, the successful bidder will be given an opportunity to accept or reject a new lease on that portion of the bid area which is not unleaseable. If rejected, the bid and all monies accompanying the bid will be returned to the successful bidder and no lease will be issued. In all other cases a new lease will be issued and any additional per acre bonus/rental, 10% administration fee or \$10 and \$5 per acre fees due as a result of staff determination of more State acreage in the bid area than determined by the successful bidder will be paid prior to the lease being issued. A determination of less State acreage in the bid area will result in a return to the successful bidder of any overpayment.

NOTE: The above described tract is in the vicinity of existing shell reefs where drilling and dredging operations must be conducted in strict conformity with the regulations adopted by the Louisiana Department of Wildlife and Fisheries and/or the U.S. Corps of Engineers, U.S. Army.

NOTE: The State of Louisiana does hereby reserve, and this lease shall be subject to, the imprescriptible right of surface use in the nature of a servitude in favor of the Department of Natural Resources, including its Offices and Commissions, for the sole purpose of implementing, constructing, servicing and maintaining approved coastal zone management and/or restoration projects. Utilization of any and all rights derived under this lease by the mineral lessee, its agents, successors or assigns, shall not interfere with nor hinder the reasonable surface use by the Department of Natural Resources, its Offices or Commissions, as hereinabove reserved.

Applicant: Kevin Caliva & Associates, Ltd.

Bidder	Cash Payment	Price / Acre	Rental	Oil	Gas	Other

BIk. 38

BIk. 37

±2,080.85 Acres

ST. MARY PARISH
TERREBONNE PARISH

TR 33140
2,080.85 +/- ACS.
FEB., 2001

P. O. B.
X=2,000,000.00
Y= 211,898.26

EUGENE ISLAND AREA, REVISED

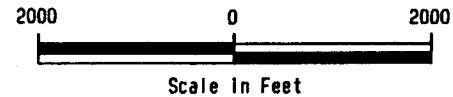
SHIP SHOAL AREA

BIk. 1

BIk. 58

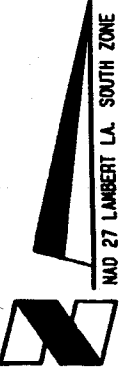
GULF OF MEXICO

St. Mary & Terrebonne Parishes, Louisiana



801

NAD 27 LAMBERT LA. SOUTH ZONE



TRACT 33141 - PORTION OF BLOCK 58, EUGENE ISLAND AREA, REVISED, St. Mary and Terrebonne Parishes, Louisiana

That portion of Block 58, Eugene Island Area, Revised, St. Mary and Terrebonne Parishes, Louisiana, belonging to the State of Louisiana and not under mineral lease on February 14, 2001, described as follows: Beginning at the Northeast corner of Block 58, Eugene Island Area, Revised, having Coordinates of X = 2,000,000.00 and Y = 211,898.26; thence South 10,101.95 feet on the East line of said Block 58 to a point having Coordinates of X = 2,000,000.00 and Y = 201,796.31; thence Northwesterly on a straight line to a point having Coordinates of X = 1,998,627 and Y = 203,119; thence Northwesterly on a straight line to a point having Coordinates of X = 1,996,877 and Y = 204,647; thence Northwesterly on an arc having a radius of 18,240.60 feet and a center at X = 2,008,873 and Y = 218,388 to a point having Coordinates of X = 1,994,484 and Y = 207,177; thence Northwesterly on a straight line to a point having Coordinates of X = 1,993,669 and Y = 208,223; thence Northwesterly on an arc having a radius of 18,240.60 feet and a center at X = 2,008,058 and Y = 219,434 to a point having Coordinates of X = 1,992,024 and Y = 210,737; thence Northwesterly on a straight line to a point having Coordinates of X = 1,991,724 and Y = 211,291; thence Northwesterly on a straight line to a point having Coordinates of X = 1,991,392 and Y = 211,653; thence Northwesterly on a straight line to a point on the North line of said Block 58 having Coordinates of X = 1,991,131.51 and Y = 211,898.26; thence East 8,868.49 feet on the North line of said Block 58 to the point of beginning, containing approximately 1,135.67 acres, as shown outlined in red on a plat on file in the Office of Mineral Resources, Department of Natural Resources, as provided by the applicant, **LESS AND EXCEPT** that portion thereof, if any, which is more than three nautical miles from the coast line as determined by the Report of the Special Master in the litigation in the Supreme Court of the United States styled United States v. State of Louisiana et al No. 9 Original, said three mile line as set out in the June, 1975, decree of the Supreme Court. All bearings, distances and coordinates are based on Louisiana Coordinate System of 1927 (South Zone).

NOTE: The boundary description and plat for this tract as shown and as advertised were supplied by the nominating party and have not been checked for accuracy by the staff of the Office of Mineral Resources. Anything which may affect the acreage, the shape or the location of the tract, such as non-closure of or incorrect X, Y coordinates or title disputed acreage, or which may affect the status of the tract for leasing, such as overlap of prior leases or nominated tracts, or which may affect potential operations on leases taken, such as inclusion in areas under the jurisdiction of the Department of Wildlife and Fisheries, will not be specifically determined unless and until a bid on this tract is accepted by the Mineral Board; which bid will be accepted on a per acre basis and which acceptance will be conditional upon such specific determinations being made. Once a bid is conditionally accepted by the Mineral Board, the staff will, within a period following the date of the lease sale, determine the acreage, shape and location of the potential lease area of the tract, the status for leasing of all or any portion thereof, and any conditions which may affect potential operations thereon. These determinations may render all or a portion of the bid area unleaseable

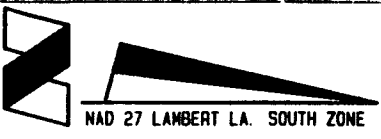
or may increase or decrease the State claimed acreage such that the total bonus/rental ultimately required may either exceed the bonus/rental paid at the lease sale, which will require additional payment by the successful bidder, or allow the successful bidder a refund of excessive payment. The successful bidder will be notified of the determinations by the staff and given an opportunity to view the bid area acreage, configuration and location as it has been specifically determined. If all or a portion of the bid area is unleaseable due to overlap of an existing lease, the successful bidder will be given an opportunity to accept or reject a new lease on that portion of the bid area which is not unleaseable. If rejected, the bid and all monies accompanying the bid will be returned to the successful bidder and no lease will be issued. In all other cases a new lease will be issued and any additional per acre bonus/rental, 10% administration fee or \$10 and \$5 per acre fees due as a result of staff determination of more State acreage in the bid area than determined by the successful bidder will be paid prior to the lease being issued. A determination of less State acreage in the bid area will result in a return to the successful bidder of any overpayment.

NOTE: The above described tract is in the vicinity of existing shell reefs where drilling and dredging operations must be conducted in strict conformity with the regulations adopted by the Louisiana Department of Wildlife and Fisheries and/or the U.S. Corps of Engineers, U.S. Army.

NOTE: The State of Louisiana does hereby reserve, and this lease shall be subject to, the imprescriptible right of surface use in the nature of a servitude in favor of the Department of Natural Resources, including its Offices and Commissions, for the sole purpose of implementing, constructing, servicing and maintaining approved coastal zone management and/or restoration projects. Utilization of any and all rights derived under this lease by the mineral lessee, its agents, successors or assigns, shall not interfere with nor hinder the reasonable surface use by the Department of Natural Resources, its Offices or Commissions, as hereinabove reserved.

Applicant: Kevin Caliva & Associates, Ltd.

Bidder	Cash Payment	Price / Acre	Rental	Oil	Gas	Other



NAD 27 LAMBERT LA. SOUTH ZONE

ST. MARY PARISH
TERREBONNE PARISH

BIK. 37

P.O.B.
X=2,000,000.00
Y=211,898.26

BIK. 1

///

±1,135.67 Acres

BIK. 58

EUGENE ISLAND AREA, REVISED

SHIP SHOAL AREA

BIK. 2

TR 33141
1,135.67 +/- ACS.
FEB., 2001

GULF OF MEXICO

St. Mary & Terrebonne Parishes, Louisiana



Scale In Feet

TRACT 33142 - PORTION OF BLOCK 36, EUGENE ISLAND AREA, REVISED, St. Mary and Terrebonne Parishes, Louisiana

That portion of Block 36, Eugene Island Area, Revised, St. Mary and Terrebonne Parishes, Louisiana, belonging to the State of Louisiana and not under mineral lease on February 14, 2001, described as follows: Beginning at a point on the South line of Block 36, Eugene Island Area, Revised, having Coordinates of X = 1,992,488.92 and Y = 226,396.84; thence North 19,451.95 feet to a point having Coordinates of X = 1,992,488.92 and Y = 245,848.79; thence Southeasterly on a straight line to a point having Coordinates of X = 1,993,420 and Y = 241,930; thence Southeasterly on a straight line to a point having Coordinates of X = 1,995,220 and Y = 235,805; thence Southeasterly on a straight line to a point having Coordinates of X = 1,996,506 and Y = 233,983; thence Southeasterly on a straight line to a point having Coordinates of X = 1,998,568 and Y = 230,370; thence Southeasterly on a straight line to a point having Coordinates of X = 2,000,000.00 and Y = 228,609.87 being a Northeast corner of said Block 36; thence South 2,213.03 feet on the East line of said Block 36 to its Southeast corner; thence West 7,511.08 feet on the South line of said Block 36 to the point of beginning, containing approximately 1,515.35 acres, as shown outlined in red on a plat on file in the Office of Mineral Resources, Department of Natural Resources, as provided by the applicant. All bearings, distances and coordinates are based on Louisiana Coordinate System of 1927 (South Zone).

NOTE: The boundary description and plat for this tract as shown and as advertised were supplied by the nominating party and have not been checked for accuracy by the staff of the Office of Mineral Resources. Anything which may affect the acreage, the shape or the location of the tract, such as non-closure of or incorrect X, Y coordinates or title disputed acreage, or which may affect the status of the tract for leasing, such as overlap of prior leases or nominated tracts, or which may affect potential operations on leases taken, such as inclusion in areas under the jurisdiction of the Department of Wildlife and Fisheries, will not be specifically determined unless and until a bid on this tract is accepted by the Mineral Board; which bid will be accepted on a per acre basis and which acceptance will be conditional upon such specific determinations being made. Once a bid is conditionally accepted by the Mineral Board, the staff will, within a period following the date of the lease sale, determine the acreage, shape and location of the potential lease area of the tract, the status for leasing of all or any portion thereof, and any conditions which may affect potential operations thereon. These determinations may render all or a portion of the bid area unleaseable or may increase or decrease the State claimed acreage such that the total bonus/rental ultimately required may either exceed the bonus/rental paid at the lease sale, which will require additional payment by the successful bidder, or allow the successful bidder a refund of excessive payment. The successful bidder will be notified of the determinations by the staff and given an opportunity to view the bid area acreage, configuration and location as it has been specifically determined. If all or a portion of the bid area is unleaseable due to overlap of an existing lease, the successful bidder will be given an opportunity to accept or reject a new lease on that portion of the bid area which is not unleaseable. If rejected, the

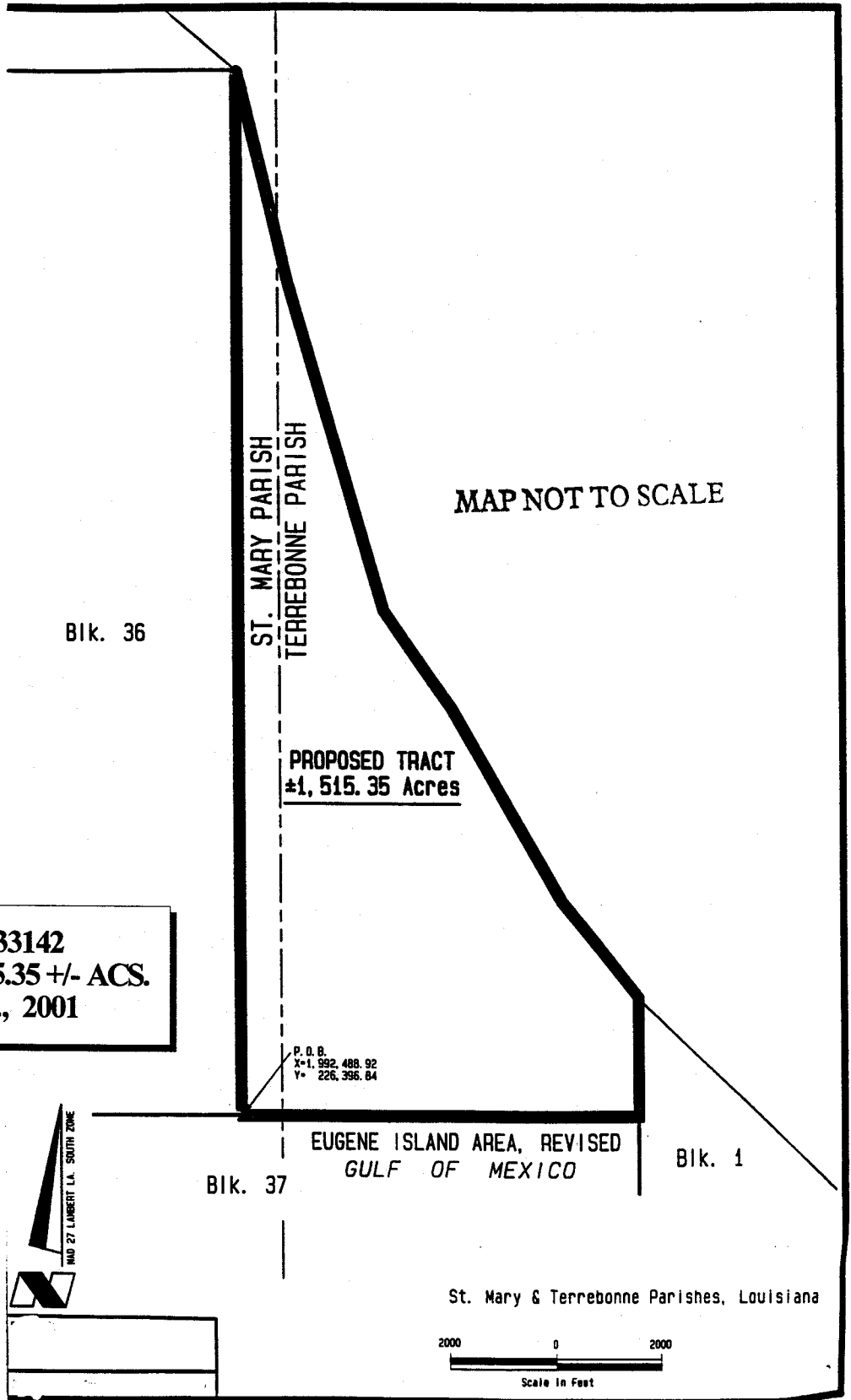
bid and all monies accompanying the bid will be returned to the successful bidder and no lease will be issued. In all other cases a new lease will be issued and any additional per acre bonus/rental, 10% administration fee or \$10 and \$5 per acre fees due as a result of staff determination of more State acreage in the bid area than determined by the successful bidder will be paid prior to the lease being issued. A determination of less State acreage in the bid area will result in a return to the successful bidder of any overpayment.

NOTE: The above described tract is in the vicinity of existing shell reefs where drilling and dredging operations must be conducted in strict conformity with the regulations adopted by the Louisiana Department of Wildlife and Fisheries and/or the U.S. Corps of Engineers, U.S. Army.

NOTE: The State of Louisiana does hereby reserve, and this lease shall be subject to, the imprescriptible right of surface use in the nature of a servitude in favor of the Department of Natural Resources, including its Offices and Commissions, for the sole purpose of implementing, constructing, servicing and maintaining approved coastal zone management and/or restoration projects. Utilization of any and all rights derived under this lease by the mineral lessee, its agents, successors or assigns, shall not interfere with nor hinder the reasonable surface use by the Department of Natural Resources, its Offices or Commissions, as hereinabove reserved.

Applicant: Kevin Caliva & Associates, Ltd.

Bidder	Cash Payment	Price / Acre	Rental	Oil	Gas	Other



MAP NOT TO SCALE

Blk. 36

ST. MARY PARISH
TERREBONNE PARISH

PROPOSED TRACT
±1,515.35 Acres

TR 33142
1,515.35 +/- ACS.
FEB., 2001

P. O. B.
X=1,992,488.92
Y=226,396.84

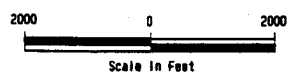


Blk. 37

EUGENE ISLAND AREA, REVISED
GULF OF MEXICO

Blk. 1

St. Mary & Terrebonne Parishes, Louisiana



TRACT 33143 - PORTION OF BLOCK 5, BAY MARCHAND AREA, Lafourche Parish, Louisiana

That portion of Block 5, Bay Marchand Area, Lafourche Parish, Louisiana, belonging to the State of Louisiana and not under mineral lease on February 14, 2001, described as follows: Beginning at a point on the West line of Block 5, Bay Marchand Area, having Coordinates of Y = 147,700.01 and X = 2,344,675.76; thence North 21 degrees 37 minutes 47 seconds West a distance of 9,419.25 feet to a point having Coordinates of Y = 150,456.00 and X = 2,341,203.75; thence North 78 degrees 31 minutes 05 seconds East a distance of 3,931.10 feet to a point having Coordinates of Y = 151,238.53 and X = 2,345,056.18; thence South a distance of 3,000.00 feet to a point having Coordinates of Y = 148,238.53 and X = 2,345,056.18; thence South 38 degrees 39 minutes 35 seconds East a distance of 3,201.56 feet to a point having Coordinates of Y = 145,738.53 and X = 2,347,056.18; thence East a distance of 1,000.00 feet to a point having Coordinates of Y = 145,738.53 and X = 2,348,056.18; thence South a distance of 5,099.26 feet to a point having Coordinates of Y = 140,639.27 and X = 2,348,056.18; thence North 72 degrees 34 minutes 43 seconds West a distance of 3,542.94 feet to the point of beginning, containing approximately **836.71 acres**, as shown outlined in red on a plat on file in the Office of Mineral Resources, Department of Natural Resources, as provided by the applicant. All bearings, distances and coordinates are based on Louisiana Coordinate System of 1927 (South Zone).

NOTE: The boundary description and plat for this tract as shown and as advertised were supplied by the nominating party and have not been checked for accuracy by the staff of the Office of Mineral Resources. Anything which may affect the acreage, the shape or the location of the tract, such as non-closure of or incorrect X, Y coordinates or title disputed acreage, or which may affect the status of the tract for leasing, such as overlap of prior leases or nominated tracts, or which may affect potential operations on leases taken, such as inclusion in areas under the jurisdiction of the Department of Wildlife and Fisheries, will not be specifically determined unless and until a bid on this tract is accepted by the Mineral Board; which bid will be accepted on a per acre basis and which acceptance will be conditional upon such specific determinations being made. Once a bid is conditionally accepted by the Mineral Board, the staff will, within a period following the date of the lease sale, determine the acreage, shape and location of the potential lease area of the tract, the status for leasing of all or any portion thereof, and any conditions which may affect potential operations thereon. These determinations may render all or a portion of the bid area unleaseable or may increase or decrease the State claimed acreage such that the total bonus/rental ultimately required may either exceed the bonus/rental paid at the lease sale, which will require additional payment by the successful bidder, or allow the successful bidder a refund of excessive payment. The successful bidder will be notified of the determinations by the staff and given an opportunity to view the bid area acreage, configuration and location as it has been specifically determined. If all or a portion of the bid area is unleaseable due to overlap of an existing lease, the successful bidder will be given an opportunity to accept or reject a new lease on that portion of the bid area which is not unleaseable. If rejected, the