

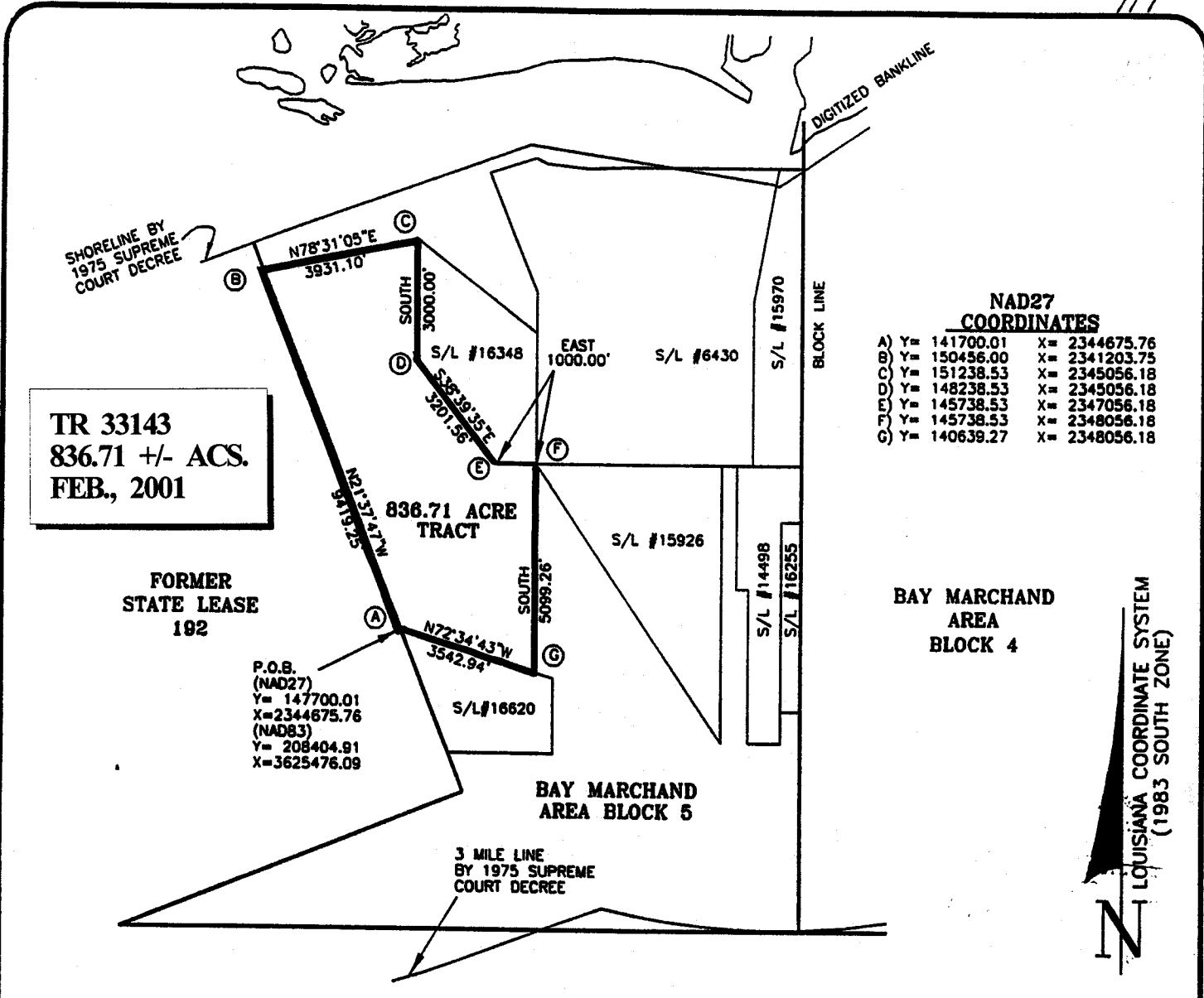
bid and all monies accompanying the bid will be returned to the successful bidder and no lease will be issued. In all other cases a new lease will be issued and any additional per acre bonus/rental, 10% administration fee or \$10 and \$5 per acre fees due as a result of staff determination of more State acreage in the bid area than determined by the successful bidder will be paid prior to the lease being issued. A determination of less State acreage in the bid area will result in a return to the successful bidder of any overpayment.

NOTE: It appears, according to our records, that a portion of this tract is located within the restrictive safety fairway area as set out by the Corps of Engineers, U.S. Army.

NOTE: The State of Louisiana does hereby reserve, and this lease shall be subject to, the imprescriptible right of surface use in the nature of a servitude in favor of the Department of Natural Resources, including its Offices and Commissions, for the sole purpose of implementing, constructing, servicing and maintaining approved coastal zone management and/or restoration projects. Utilization of any and all rights derived under this lease by the mineral lessee, its agents, successors or assigns, shall not interfere with nor hinder the reasonable surface use by the Department of Natural Resources, its Offices or Commissions, as hereinabove reserved.

Applicant: D.G. Andrews

Bidder	Cash Payment	Price / Acre	Rental	Oil	Gas	Other



TR 33143
836.71 +/- ACS.
FEB., 2001

FORMER STATE LEASE 182

P.O.B. (NAD27)
 Y= 147700.01
 X= 2344675.76
(NAD83)
 Y= 208404.91
 X= 3625476.09

NAD27 COORDINATES

A) Y= 141700.01	X= 2344675.76
B) Y= 150456.00	X= 2341203.75
C) Y= 151238.53	X= 2345056.18
D) Y= 148238.53	X= 2345056.18
E) Y= 145738.53	X= 2347056.18
F) Y= 145738.53	X= 2348056.18
G) Y= 140639.27	X= 2348056.18

BAY MARCHAND AREA BLOCK 4

BAY MARCHAND AREA BLOCK 5



GRAPHIC SCALE



NOTE: UNLESS OTHERWISE NOTED COORDINATES ARE BASED ON NAD27.

NOTE: NAD83 COORDINATES WERE CONVERTED TO/FROM NAD27 COORDINATES USING THE CORPSCON SOFTWARE FROM THE U.S. ARMY TOPOGRAPHIC ENGINEERING CENTER.

NO.	DATE	REVISION
<p>836.71 ACRES</p> <p>BAY MARCHAND AREA</p> <p>BLOCK 5</p> <p>LAFOURCHE PARISH, LOUISIANA</p>		
		<p>SCALE: 1" = 4000'</p>

TRACT 33144 - PORTION OF BLOCK 4, BAY MARCHAND AREA, Lafourche Parish, Louisiana

That portion of Block 4, Bay Marchand Area, Lafourche Parish, Louisiana, belonging to the State of Louisiana and not under mineral lease on February 14, 2001, described as follows: Beginning at a point on the East line of Block 4, Bay Marchand Area, having Coordinates of Y = 137,515.95 and X = 2,364,327.73; thence along a curve to the right having a delta of 20 degrees 09 minutes 48 seconds, a radius of 18,240.60 feet, a length of 6,419.16 feet and a chord of South 65 degrees 51 minutes 45 seconds West 6,386.09 feet to a point having a Coordinate of Y = 134,904.50 and X = 2,358,500.00; thence North a distance of 12,095.50 to a point having a Coordinate of Y = 147,000.00 and X = 2,358,500.00; thence East a distance of 5,827.73 feet to a point having a Coordinate of Y = 147,000.00 and X = 2,364,327.73; thence South a distance of 9,484.05 feet to the point of beginning, containing approximately **1,471.09 acres**, as shown outlined in red on a plat on file in the Office of Mineral Resources, Department of Natural Resources, as provided by the applicant, **LESS AND EXCEPT** that portion thereof, if any, which is more than three nautical miles from the coast line as determined by the Report of the Special Master in the litigation in the Supreme Court of the United States styled United States v. State of Louisiana et al No. 9 Original, said three mile line as set out in the June, 1975, decree of the Supreme Court. All bearings, distances and coordinates are based on Louisiana Coordinate System of 1927 (South Zone).

NOTE: The boundary description and plat for this tract as shown and as advertised were supplied by the nominating party and have not been checked for accuracy by the staff of the Office of Mineral Resources. Anything which may affect the acreage, the shape or the location of the tract, such as non-closure of or incorrect X, Y coordinates or title disputed acreage, or which may affect the status of the tract for leasing, such as overlap of prior leases or nominated tracts, or which may affect potential operations on leases taken, such as inclusion in areas under the jurisdiction of the Department of Wildlife and Fisheries, will not be specifically determined unless and until a bid on this tract is accepted by the Mineral Board; which bid will be accepted on a per acre basis and which acceptance will be conditional upon such specific determinations being made. Once a bid is conditionally accepted by the Mineral Board, the staff will, within a period following the date of the lease sale, determine the acreage, shape and location of the potential lease area of the tract, the status for leasing of all or any portion thereof, and any conditions which may affect potential operations thereon. These determinations may render all or a portion of the bid area unleaseable or may increase or decrease the State claimed acreage such that the total bonus/rental ultimately required may either exceed the bonus/rental paid at the lease sale, which will require additional payment by the successful bidder, or allow the successful bidder a refund of excessive payment. The successful bidder will be notified of the determinations by the staff and given an opportunity to view the bid area acreage, configuration and location as it has been specifically determined. If all or a portion of the bid area is unleaseable due to overlap of an existing lease, the successful bidder will be given an opportunity to accept or reject a new lease on that

portion of the bid area which is not unleaseable. If rejected, the bid and all monies accompanying the bid will be returned to the successful bidder and no lease will be issued. In all other cases a new lease will be issued and any additional per acre bonus/rental, 10% administration fee or \$10 and \$5 per acre fees due as a result of staff determination of more State acreage in the bid area than determined by the successful bidder will be paid prior to the lease being issued. A determination of less State acreage in the bid area will result in a return to the successful bidder of any overpayment.

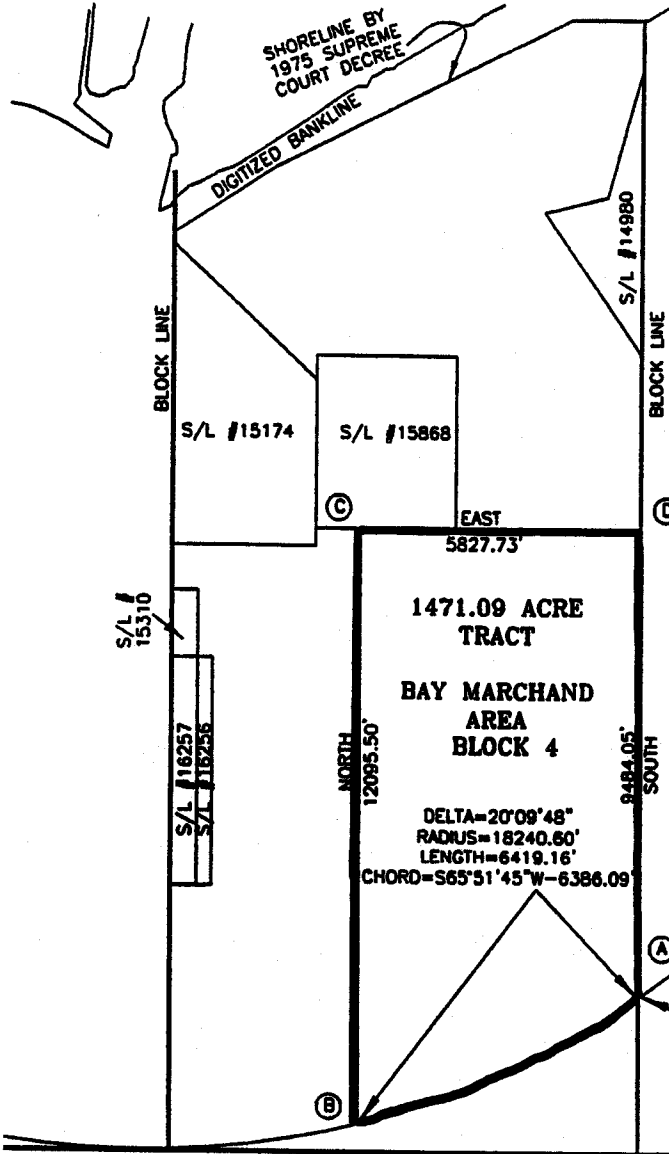
NOTE: It appears, according to our records, that a portion of this tract is located within the restrictive safety fairway area as set out by the Corps of Engineers, U.S. Army.

NOTE: The State of Louisiana does hereby reserve, and this lease shall be subject to, the imprescriptible right of surface use in the nature of a servitude in favor of the Department of Natural Resources, including its Offices and Commissions, for the sole purpose of implementing, constructing, servicing and maintaining approved coastal zone management and/or restoration projects. Utilization of any and all rights derived under this lease by the mineral lessee, its agents, successors or assigns, shall not interfere with nor hinder the reasonable surface use by the Department of Natural Resources, its Offices or Commissions, as hereinabove reserved.

Applicant: D.G. Andrews

Bidder	Cash Payment	Price / Acre	Rental	Oil	Gas	Other

LOUISIANA COORDINATE SYSTEM
(1983 SOUTH ZONE)



**NAD27
COORDINATES**

- A) Y= 137515.95 X= 2364327.73
- B) Y= 134804.50 X= 2358500.00
- C) Y= 147000.00 X= 2358500.00
- D) Y= 147000.00 X= 2364327.73

**BAY MARCHAND
AREA
BLOCK 3**

**BAY MARCHAND
AREA
BLOCK 5**

**TR 33144
1,471.09 +/- ACS.
FEB., 2001**

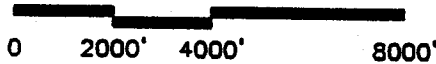
**1471.09 ACRE
TRACT
BAY MARCHAND
AREA
BLOCK 4**

DELTA=20°09'48"
RADIUS=18240.60'
LENGTH=6419.16'
CHORD=S65°51'45"W-6386.09'

3 MILE LINE
BY 1975 SUPREME
COURT DECREE

P.O.B.
(NAD27)
Y= 137515.95
X=2364327.73
(NAD83)
Y= 198220.92
X=3645128.23

GRAPHIC SCALE



NOTE: UNLESS OTHERWISE NOTED
COORDINATES ARE BASED ON NAD27.

NOTE:
NAD83 COORDINATES WERE CONVERTED
TO/FROM NAD27 COORDINATES USING THE
CORPSCON SOFTWARE FROM THE U.S.
ARMY TOPOGRAPHIC ENGINEERING CENTER.

NO.	DATE	REVISION
-----	------	----------

1471.09 ACRES

**BAY MARCHAND AREA
BLOCK 4
LAFOURCHE PARISH, LOUISIANA**

SCALE: 1"=4000'

TRACT 33145 - PORTION OF BLOCK 3, BAY MARCHAND AREA, Lafourche Parish, Louisiana

That portion of Block 3, Bay Marchand Area, Lafourche Parish, Louisiana, belonging to the State of Louisiana and not under mineral lease on February 14, 2001, described as follows: Beginning at a point on the West line of Block 3, Bay Marchand Area, having Coordinates of Y = 144,900.00 and X = 2,364,327.73; thence North a distance of 1,869.81 feet to a point having Coordinates of Y = 146,769.81 and X = 2,364,327.73; thence East a distance of 2,754.37 feet to a point having Coordinates of Y = 146,769.81 and X = 2,367,082.10; thence South a distance of 1,869.81 feet to a point having Coordinates of Y = 144,900.00 and X = 2,367,082.10; thence West a distance of 2,754.37 feet to the point of beginning, containing approximately **118.23 acres**, as shown outlined in red on a plat on file in the Office of Mineral Resources, Department of Natural Resources, as provided by the applicant. All bearings, distances and coordinates are based on Louisiana Coordinate System of 1927 (South Zone).

NOTE: The boundary description and plat for this tract as shown and as advertised were supplied by the nominating party and have not been checked for accuracy by the staff of the Office of Mineral Resources. Anything which may affect the acreage, the shape or the location of the tract, such as non-closure of or incorrect X, Y coordinates or title disputed acreage, or which may affect the status of the tract for leasing, such as overlap of prior leases or nominated tracts, or which may affect potential operations on leases taken, such as inclusion in areas under the jurisdiction of the Department of Wildlife and Fisheries, will not be specifically determined unless and until a bid on this tract is accepted by the Mineral Board; which bid will be accepted on a per acre basis and which acceptance will be conditional upon such specific determinations being made. Once a bid is conditionally accepted by the Mineral Board, the staff will, within a period following the date of the lease sale, determine the acreage, shape and location of the potential lease area of the tract, the status for leasing of all or any portion thereof, and any conditions which may affect potential operations thereon. These determinations may render all or a portion of the bid area unleaseable or may increase or decrease the State claimed acreage such that the total bonus/rental ultimately required may either exceed the bonus/rental paid at the lease sale, which will require additional payment by the successful bidder, or allow the successful bidder a refund of excessive payment. The successful bidder will be notified of the determinations by the staff and given an opportunity to view the bid area acreage, configuration and location as it has been specifically determined. If all or a portion of the bid area is unleaseable due to overlap of an existing lease, the successful bidder will be given an opportunity to accept or reject a new lease on that portion of the bid area which is not unleaseable. If rejected, the bid and all monies accompanying the bid will be returned to the successful bidder and no lease will be issued. In all other cases a new lease will be issued and any additional per acre bonus/rental, 10% administration fee or \$10 and \$5 per acre fees due as a result of staff determination of more State acreage in the bid area than determined by the successful bidder will be paid prior to the lease

being issued. A determination of less State acreage in the bid area will result in a return to the successful bidder of any overpayment.

NOTE: The State of Louisiana does hereby reserve, and this lease shall be subject to, the imprescriptible right of surface use in the nature of a servitude in favor of the Department of Natural Resources, including its Offices and Commissions, for the sole purpose of implementing, constructing, servicing and maintaining approved coastal zone management and/or restoration projects. Utilization of any and all rights derived under this lease by the mineral lessee, its agents, successors or assigns, shall not interfere with nor hinder the reasonable surface use by the Department of Natural Resources, its Offices or Commissions, as hereinabove reserved.

Applicant: D.G. Andrews

Bidder	Cash Payment	Price / Acre	Rental	Oil	Gas	Other

**NAD27
COORDINATES**

A) Y= 144900.00 X= 2364327.73
 B) Y= 146769.81 X= 2364327.73
 C) Y= 146769.81 X= 2367082.10
 D) Y= 144900.00 X= 2367082.10

LOUISIANA COORDINATE SYSTEM
 (1983 SOUTH ZONE)

P.O.B.
 (NAD27)
 Y= 144900.00
 X= 2364327.73
 (NAD83)
 Y= 205605.07
 X= 3645128.25

BAY MARCHAND
 AREA
 BLOCK 4

BLOCK LINE

BLOCK LINE

S/L #1367

BAY MARCHAND
 AREA
 BLOCK 3

BAY MARCHAND
 AREA
 BLOCK 2

EAST
 2754.37'
 118.23 AC.
 TRACT

WEST
 2754.37'

S/L #16621

3 MILE LINE
 BY 1975 SUPREME
 COURT DECREE

TR 33145
 118.23 +/- ACS.
 FEB., 2001

GRAPHIC SCALE

0 2000' 4000' 8000'

NOTE: UNLESS OTHERWISE NOTED
 COORDINATES ARE BASED ON NAD27.

NOTE:
 NAD83 COORDINATES WERE CONVERTED
 TO/FROM NAD27 COORDINATES USING THE
 CORPSCON SOFTWARE FROM THE U.S.
 ARMY TOPOGRAPHIC ENGINEERING CENTER.

NO.	DATE	REVISION
<p style="text-align: center;">118.23 ACRES</p> <p style="text-align: center;">BAY MARCHAND AREA BLOCK 3 LAFOURCHE PARISH, LOUISIANA</p>		
		<p>SCALE: 1" = 4000'</p>

TRACT 33146 - PORTION OF BLOCK 3, BAY MARCHAND AREA, Lafourche Parish, Louisiana

That portion of Block 3, Bay Marchand Area, Lafourche Parish, Louisiana, belonging to the State of Louisiana and not under mineral lease on February 14, 2001, described as follows: Beginning at a point on the West line of Block 3, Bay Marchand Area, having Coordinates of Y = 137,515.95 and X = 2,364,327.73; thence North a distance of 2,034.05 feet to a point having Coordinates of Y = 139,550.00 and X = 2,364,327.73; thence South 68 degrees 48 minutes 04 seconds East a distance of 2,212.34 feet to a point having Coordinates of Y = 138,750.00 and X = 2,366,390.36; thence South 63 degrees 41 minutes 00 seconds West a distance of 1,274.45 feet to a point having Coordinates of Y = 138,185.00 and X = 2,365,248.00; thence along a curve to the left having a delta of 3 degrees 34 minutes 28 seconds a radius of 18,240.60 a length of 1,137.96 and a chord of South 53 degrees 58 minutes 56 seconds West 1,137.77 feet to the point of beginning, containing approximately **45.51 acres**, as shown outlined in red on a plat on file in the Office of Mineral Resources, Department of Natural Resources, as provided by the applicant, **LESS AND EXCEPT** that portion thereof, if any, which is more than three nautical miles from the coast line as determined by the Report of the Special Master in the litigation in the Supreme Court of the United States styled United States v. State of Louisiana et al No. 9 Original, said three mile line as set out in the June, 1975, decree of the Supreme Court. All bearings, distances and coordinates are based on Louisiana Coordinate System of 1927 (South Zone).

NOTE: The boundary description and plat for this tract as shown and as advertised were supplied by the nominating party and have not been checked for accuracy by the staff of the Office of Mineral Resources. Anything which may affect the acreage, the shape or the location of the tract, such as non-closure of or incorrect X, Y coordinates or title disputed acreage, or which may affect the status of the tract for leasing, such as overlap of prior leases or nominated tracts, or which may affect potential operations on leases taken, such as inclusion in areas under the jurisdiction of the Department of Wildlife and Fisheries, will not be specifically determined unless and until a bid on this tract is accepted by the Mineral Board; which bid will be accepted on a per acre basis and which acceptance will be conditional upon such specific determinations being made. Once a bid is conditionally accepted by the Mineral Board, the staff will, within a period following the date of the lease sale, determine the acreage, shape and location of the potential lease area of the tract, the status for leasing of all or any portion thereof, and any conditions which may affect potential operations thereon. These determinations may render all or a portion of the bid area unleaseable or may increase or decrease the State claimed acreage such that the total bonus/rental ultimately required may either exceed the bonus/rental paid at the lease sale, which will require additional payment by the successful bidder, or allow the successful bidder a refund of excessive payment. The successful bidder will be notified of the determinations by the staff and given an opportunity to view the bid area acreage, configuration and location as it has been specifically determined. If all or a portion of the bid area is unleaseable due to overlap of an existing lease, the successful bidder

will be given an opportunity to accept or reject a new lease on that portion of the bid area which is not unleaseable. If rejected, the bid and all monies accompanying the bid will be returned to the successful bidder and no lease will be issued. In all other cases a new lease will be issued and any additional per acre bonus/rental, 10% administration fee or \$10 and \$5 per acre fees due as a result of staff determination of more State acreage in the bid area than determined by the successful bidder will be paid prior to the lease being issued. A determination of less State acreage in the bid area will result in a return to the successful bidder of any overpayment.

NOTE: The State of Louisiana does hereby reserve, and this lease shall be subject to, the imprescriptible right of surface use in the nature of a servitude in favor of the Department of Natural Resources, including its Offices and Commissions, for the sole purpose of implementing, constructing, servicing and maintaining approved coastal zone management and/or restoration projects. Utilization of any and all rights derived under this lease by the mineral lessee, its agents, successors or assigns, shall not interfere with nor hinder the reasonable surface use by the Department of Natural Resources, its Offices or Commissions, as hereinabove reserved.

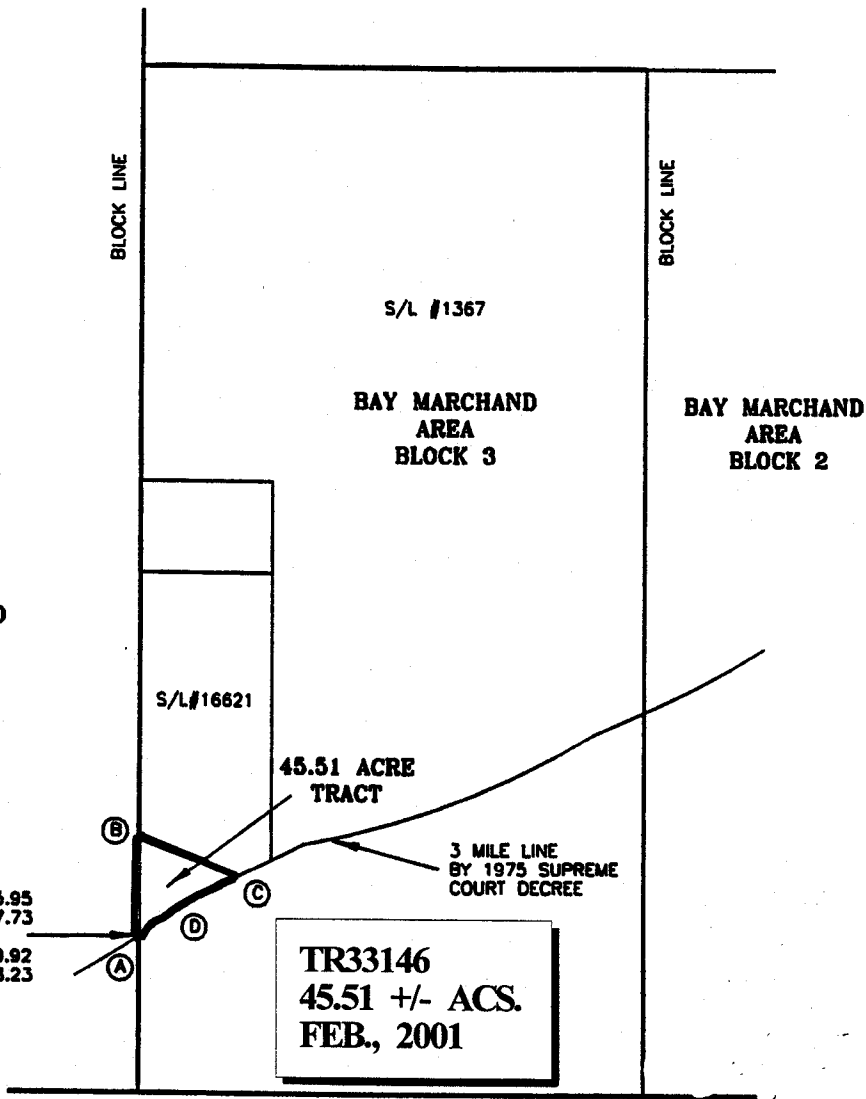
Applicant: D.G. Andrews

Bidder	Cash Payment	Price / Acre	Rental	Oil	Gas	Other

**NAD27
COORDINATES**

- A) Y= 137515.95 X= 2364327.73
- B) Y= 139550.00 X= 2364327.73
- C) Y= 138750.00 X= 2366390.36
- D) Y= 138185.00 X= 2365248.00

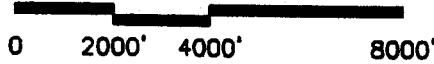
- A-B NORTH-2034.05'
- B-C S68°48'04"E-2212.34'
- C-D S63°41'00"W-1274.45'
- D-A DELTA=3°34'28"
- RADIUS=18240.60'
- LENGTH=1137.96'
- CHORD=S53°58'56"W-1137.77'



P.O.B.
(NAD27)
Y= 137515.95
X= 2364327.73
(NAD83)
Y= 198220.92
X= 3645128.23

TR33146
45.51 +/- ACS.
FEB., 2001

GRAPHIC SCALE



NOTE: UNLESS OTHERWISE NOTED
COORDINATES ARE BASED ON NAD27.

NOTE:
NAD83 COORDINATES WERE CONVERTED
TO/FROM NAD27 COORDINATES USING THE
CORPSCON SOFTWARE FROM THE U.S.
ARMY TOPOGRAPHIC ENGINEERING CENTER.

NO.	DATE	REVISION

45.51 ACRES

**BAY MARCHAND AREA
BLOCK 3
LAFOURCHE PARISH, LOUISIANA**

	SCALE: 1"=4000'

TRACT 33147 - PORTION OF BLOCK 42, SOUTH PASS AREA, Plaquemines Parish, Louisiana

That portion of Block 42, South Pass Area, Plaquemines Parish, Louisiana, belonging to the State of Louisiana and not under mineral lease on February 14, 2001, described as follows: Beginning at the Northwest corner of Block 42, South Pass Area, having Coordinates of X = 2,615,928.00 and Y = 96,908.00; thence East 14,758.00 feet on the North line of said Block 42 to its Northeast corner having Coordinates of X = 2,630,686.00 and Y = 96,908.00; thence South 7,379.00 feet on the East line of said Block 42 to a point having Coordinates of X = 2,630,686.00 and Y = 89,529.00; thence West 14,014.62 feet to a point on the East boundary of State Lease No. 12967, as amended, having Coordinates of X = 2,616,671.38 and Y = 89,529.00; thence North 38 degrees 51 minutes 34 seconds East 3,596.72 feet on the East boundary of said State Lease No. 12967 to its Northernmost Southeast corner, also being the Southernmost point of State Lease No. 13261, as amended, having Coordinates of X = 2,618,928.00 and Y = 92,329.72; thence on the boundary of said State Lease No. 13261 the following courses: North 38 degrees 51 minutes 34 seconds East 2,537.23 feet and North 75 degrees 56 minutes 44 seconds West 1,641.01 feet to its Northwest corner, also being the Northeast corner of said State Lease No. 12967 having Coordinates of X = 2,618,928.00 and Y = 94,703.94; thence on the Northern boundary of said State Lease No. 12967 the following courses: North 75 degrees 56 minutes 44 seconds West 2,061.71 feet and South 54 degrees 24 minutes 20 seconds West 1,229.79 feet to its Northwest corner on the West line of said Block 42 having Coordinates of X = 2,615,928.00 and Y = 94,488.82; thence North 2,419.18 feet on the West line of said Block 42 to the point of beginning, containing approximately **2,157.97 acres**, as shown outlined in red on a plat on file in the Office of Mineral Resources, Department of Natural Resources. All bearings, distances and coordinates are based on Louisiana Coordinate System of 1927 (South Zone).

NOTE: It appears, according to our records, that a portion of this tract is located within the restrictive anchorage area as set out by the U. S. Coast Guard.

NOTE: The State of Louisiana does hereby reserve, and this lease shall be subject to, the imprescriptible right of surface use in the nature of a servitude in favor of the Department of Natural Resources, including its Offices and Commissions, for the sole purpose of implementing, constructing, servicing and maintaining approved coastal zone management and/or restoration projects. Utilization of any and all rights derived under this lease by the mineral lessee, its agents, successors or assigns, shall not interfere with nor hinder the reasonable surface use by the Department of Natural Resources, its Offices or Commissions, as hereinabove reserved.

Tract Advertised by the State Mineral Board

Bidder	Cash Payment	Price / Acre	Rental	Oil	Gas	Other



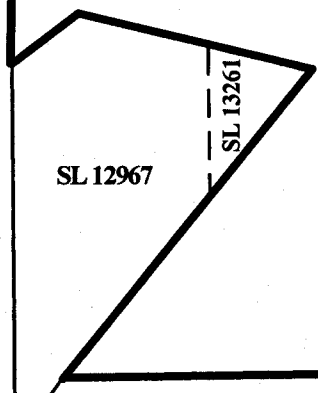
P.O.B.
X=2,615,928.00
Y= 96,908.00

BLOCK 41

BLOCK 40

BLOCK 39

BLOCK 43



SL 12967

SL 13261

BLOCK 42

TR 33147
2,157.97 +/- ACS.
FEB., 2001

SOUTH PASS AREA
PLAQUEMINES PARISH

