

specifically determined. If all or a portion of the bid area is unleaseable due to overlap of an existing lease, the successful bidder will be given an opportunity to accept or reject a new lease on that portion of the bid area which is not unleaseable. If rejected, the bid and all monies accompanying the bid will be returned to the successful bidder and no lease will be issued. In all other cases a new lease will be issued and any additional per acre bonus/rental, 10% administration fee or \$10 and \$5 per acre fees due as a result of staff determination of more State acreage in the bid area than determined by the successful bidder will be paid prior to the lease being issued. A determination of less State acreage in the bid area will result in a return to the successful bidder of any overpayment.

NOTE: The above tract is located in or near an oyster restricted area and all operations in such area must be conducted in strict conformity with the stipulations and/or regulations of the Louisiana Department of Wildlife and Fisheries.

NOTE: This tract is located within the Biloxi Wildlife Management Area. Any operations on said tract shall be coordinated with the Louisiana Department of Wildlife and Fisheries. Special Rules and Regulations have been promulgated by the Louisiana Department of Wildlife and Fisheries for the protection of the game and wildlife for some management areas. Any lease awarded by the Board on said tract shall be subject to any applicable Rules and Regulations of said management area. Copies of these Rules and Regulations may be obtained from the Louisiana Department of Wildlife and Fisheries through the Assistant Secretary, Office of Wildlife, upon request.

- NOTE:
1. No activities will be allowed without written authorization of the Louisiana Department of Wildlife and Fisheries. All projects will be coordinated and approved by the Biloxi Wildlife Management Area Supervisor prior to any activities on the wildlife management area.
 2. Proposed projects will be evaluated on a case by case basis. Modifications to proposed project features including but not limited to access routes, well sites, flowlines and appurtenant structures may be required by the Louisiana Department of Wildlife and Fisheries.
 3. Compliance with the Biloxi Wildlife Management Area regulations will be required unless otherwise specified by the Department.
 4. Compensatory mitigation will be required to offset unavoidable habitat impacts.
 5. Removal of all structures, facilities and equipment will be required within 120 days of abandonment unless otherwise agreed to by the Department.
 6. No activities will be allowed during the hunting season unless approved by the Department.

7. Prior to submitting applications for wetland permits to Federal and State permitting agencies, the leaseholder shall coordinate project details with the Department.

NOTE: The Department will require a minimum bonus of \$350.00 per acre and a minimum royalty of 25%.

NOTE: The State of Louisiana does hereby reserve, and this lease shall be subject to, the imprescriptible right of surface use in the nature of a servitude in favor of the Department of Natural Resources, including its Offices and Commissions, for the sole purpose of implementing, constructing, servicing and maintaining approved coastal zone management and/or restoration projects. Utilization of any and all rights derived under this lease by the mineral lessee, its agents, successors or assigns, shall not interfere with nor hinder the reasonable surface use by the Department of Natural Resources, its Offices or Commissions, as hereinabove reserved.

Applicant: Wolf Energy, Inc.

Bidder	Cash Payment	Price / Acre	Rental	Oil	Gas	Other

P.O.B.

X = 2,546,870.98'

Y = 461,926.51'

±1,618.55 ACRES

TR 33213
1,618.55 +/- ACS.
FEB., 2001

ORLEANS AND/OR
ST. BERNARD AND/OR
ST. TAMMANY PARISHES,
LOUISIANA.

Light

S. L. 16697
Bayou

St Mo

Negro

S. L. 16698

Blind

Hanson

Bayou

Bayou

27

21

22

16

15

L A



Scale- 1"=2000'

333

TRACT 33214 - St. Bernard Parish, Louisiana

All of the lands now or formerly constituting the beds and bottoms of all water bodies of every nature and description and all islands and other lands formed by accretion or reliction, except tax lands, owned by and not under mineral lease from the State of Louisiana on February 14, 2001, situated in St. Bernard Parish, Louisiana, within the following described boundaries: Beginning at a point having Coordinates of X = 2,539,491.95 and Y = 447,168.46; thence East 11,857.61 feet to an intersection point on the West boundary of State Lease No. 16697 having Coordinates of X = 2,551,349.56 and Y = 447,168.46; thence along the Western boundary of said State Lease No. 16697 the following courses: South 19 degrees 07 minutes 21 seconds West 1,228.85 feet to a corner having Coordinates of X = 2,550,947.01 and Y = 446,007.42; South 52 degrees 38 minutes 20 seconds West 3,795.40 feet to a corner having Coordinates of X = 2,547,930.32 and Y = 443,704.23; South 55 degrees 15 minutes 19 seconds West 3,303.08 feet to a corner having Coordinates of X = 2,545,216.18 and Y = 441,821.73; South 68 degrees 35 minutes 01 seconds West 3,534.21 feet to a corner having Coordinates of X = 2,541,926.00 and Y = 440,531.24; South 01 degrees 15 minutes 15 seconds East 2,531.85 feet to a point having Coordinates of X = 2,541,981.42 and Y = 438,000.00; thence West 2,489.47 feet to a point having Coordinates of X = 2,539,491.95 and Y = 438,000.00; thence North 9,168.46 feet to the point of beginning, containing approximately 1,318 acres, as shown outlined in red on a plat on file in the Office of Mineral Resources, Department of Natural Resources, as provided by the applicant. All bearings, distances and coordinates are based on Louisiana Coordinate System of 1927 (South Zone).

NOTE: The boundary description and plat for this tract as shown and as advertised were supplied by the nominating party and have not been checked for accuracy by the staff of the Office of Mineral Resources. Anything which may affect the acreage, the shape or the location of the tract, such as non-closure of or incorrect X, Y coordinates or title disputed acreage, or which may affect the status of the tract for leasing, such as overlap of prior leases or nominated tracts, or which may affect potential operations on leases taken, such as inclusion in areas under the jurisdiction of the Department of Wildlife and Fisheries, will not be specifically determined unless and until a bid on this tract is accepted by the Mineral Board; which bid will be accepted on a per acre basis and which acceptance will be conditional upon such specific determinations being made. Once a bid is conditionally accepted by the Mineral Board, the staff will, within a period following the date of the lease sale, determine the acreage, shape and location of the potential lease area of the tract, the status for leasing of all or any portion thereof, and any conditions which may affect potential operations thereon. These determinations may render all or a portion of the bid area unleaseable or may increase or decrease the State claimed acreage such that the total bonus/rental ultimately required may either exceed the bonus/rental paid at the lease sale, which will require additional payment by the successful bidder, or allow the successful bidder a refund of excessive payment. The successful bidder will be notified of the determinations by the staff and given an opportunity to view the bid area acreage, configuration and location as it has been specifically determined. If all or a portion of the bid area is

unleasable due to overlap of an existing lease, the successful bidder will be given an opportunity to accept or reject a new lease on that portion of the bid area which is not unleasable. If rejected, the bid and all monies accompanying the bid will be returned to the successful bidder and no lease will be issued. In all other cases a new lease will be issued and any additional per acre bonus/rental, 10% administration fee or \$10 and \$5 per acre fees due as a result of staff determination of more State acreage in the bid area than determined by the successful bidder will be paid prior to the lease being issued. A determination of less State acreage in the bid area will result in a return to the successful bidder of any overpayment.

NOTE: The above tract is located in or near an oyster restricted area and all operations in such area must be conducted in strict conformity with the stipulations and/or regulations of the Louisiana Department of Wildlife and Fisheries.

NOTE: The State of Louisiana does hereby reserve, and this lease shall be subject to, the imprescriptible right of surface use in the nature of a servitude in favor of the Department of Natural Resources, including its Offices and Commissions, for the sole purpose of implementing, constructing, servicing and maintaining approved coastal zone management and/or restoration projects. Utilization of any and all rights derived under this lease by the mineral lessee, its agents, successors or assigns, shall not interfere with nor hinder the reasonable surface use by the Department of Natural Resources, its Offices or Commissions, as hereinabove reserved.

Applicant: Wolf Energy, Inc.

Bidder	Cash Payment	Price / Acre	Rental	Oil	Gas	Other

P.O.B.

X = 2,539,491.95'
Y = 447,168.46'

±1,318 ACRES

LAKE BORGNE

TR 33214
1,318 +/- ACS.
FEB, 2001

Light

Bayou

St. Malo



32

32

32

32

32

32

32

32

32

32

32

32

32

32

32

32

32

32

32

32

S. L. 16697

S. L. 16698

ORLEANS AND/OR ST. BERNARD AND/OR ST. TAMMANY PARISHES, LOUISIANA

Scale- 1"=2000'

TRACT 33215 - PORTION OF BLOCK 1, NORTH LAKE BORGNE AREA, St. Tammany Parish, Louisiana

All of the lands now or formerly constituting the beds and bottoms of all water bodies of every nature and description and all islands and other lands formed by accretion or reliction, except tax lands, belonging to the State of Louisiana and not under mineral lease on February 14, 2001, situated in St. Tammany Parish, Louisiana, and more particularly described as follows: Beginning at a point on the South boundary of Block 1, North Lake Borgne Area, having Coordinates of X = 2,563,250.00 and Y = 547,958.70; thence West 9,000.00 feet along the South boundary of said Block 1 to its Southwest corner having Coordinates of X = 2,554,250.00 and Y = 547,958.70; thence North approximately 8,400 feet along the West boundary of said Block 1 to its Northwest corner on the boundary between the States of Louisiana and Mississippi having a Coordinate of X = 2,554,250.00; thence Southeasterly and Northeasterly along the said boundary between Louisiana and Mississippi to an intersection point with a North-South line have a Coordinate of X = 2,563,250.00; thence South approximately 10,540 feet to the point of beginning, containing approximately 1,051 acres, as shown outlined in red on a plat on file in the Office of Mineral Resources, Department of Natural Resources, as provided by the applicant. All bearings, distances and coordinates are based on Louisiana Coordinate System of 1927 (South Zone).

NOTE: The boundary description and plat for this tract as shown and as advertised were supplied by the nominating party and have not been checked for accuracy by the staff of the Office of Mineral Resources. Anything which may affect the acreage, the shape or the location of the tract, such as non-closure of or incorrect X, Y coordinates or title disputed acreage, or which may affect the status of the tract for leasing, such as overlap of prior leases or nominated tracts, or which may affect potential operations on leases taken, such as inclusion in areas under the jurisdiction of the Department of Wildlife and Fisheries, will not be specifically determined unless and until a bid on this tract is accepted by the Mineral Board; which bid will be accepted on a per acre basis and which acceptance will be conditional upon such specific determinations being made. Once a bid is conditionally accepted by the Mineral Board, the staff will, within a period following the date of the lease sale, determine the acreage, shape and location of the potential lease area of the tract, the status for leasing of all or any portion thereof, and any conditions which may affect potential operations thereon. These determinations may render all or a portion of the bid area unleaseable or may increase or decrease the State claimed acreage such that the total bonus/rental ultimately required may either exceed the bonus/rental paid at the lease sale, which will require additional payment by the successful bidder, or allow the successful bidder a refund of excessive payment. The successful bidder will be notified of the determinations by the staff and given an opportunity to view the bid area acreage, configuration and location as it has been specifically determined. If all or a portion of the bid area is unleaseable due to overlap of an existing lease, the successful bidder will be given an opportunity to accept or reject a new lease on that portion of the bid area which is not unleaseable. If rejected, the bid and all monies accompanying the bid will be returned to the

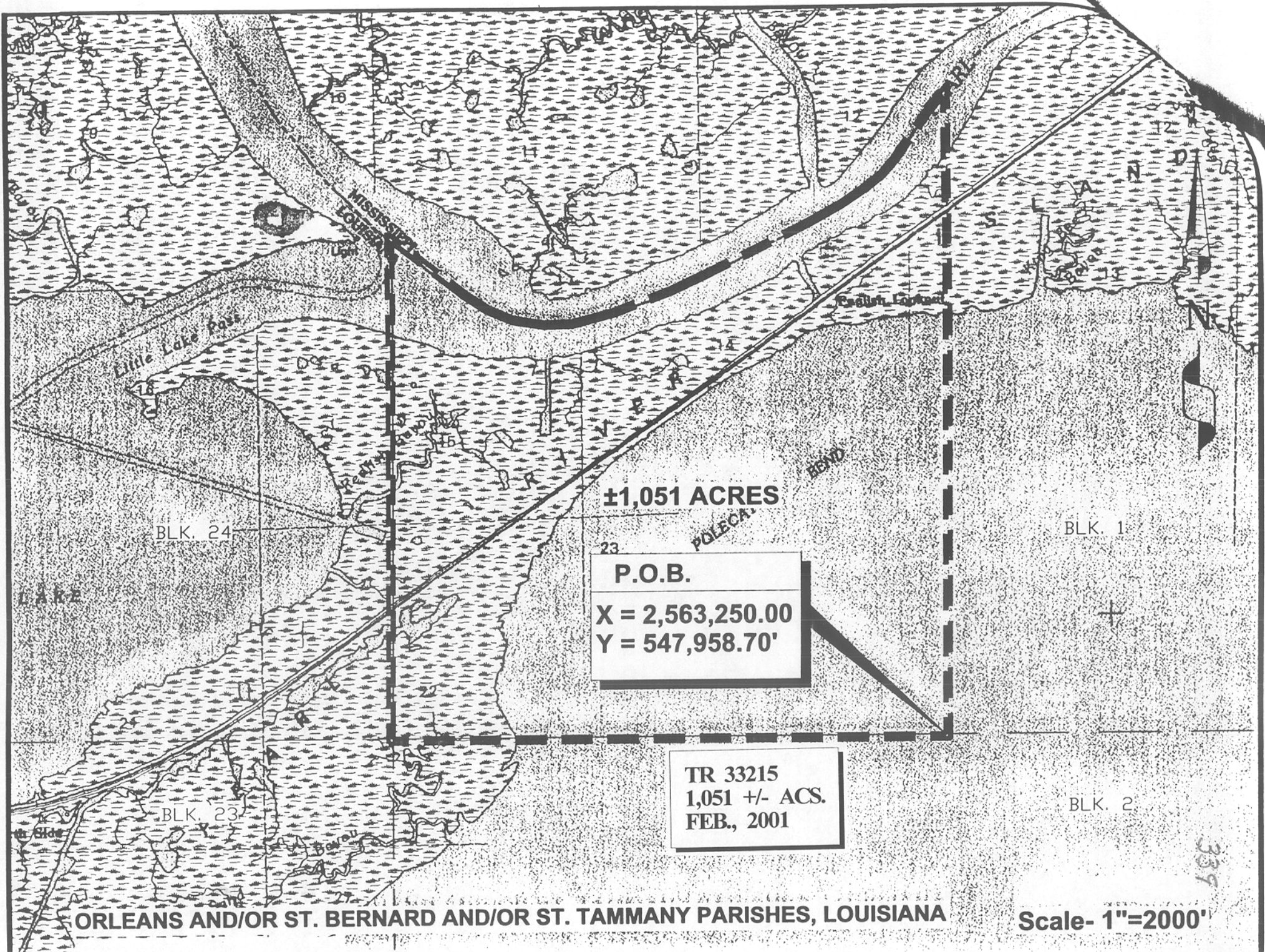
successful bidder and no lease will be issued. In all other cases a new lease will be issued and any additional per acre bonus/rental, 10% administration fee or \$10 and \$5 per acre fees due as a result of staff determination of more State acreage in the bid area than determined by the successful bidder will be paid prior to the lease being issued. A determination of less State acreage in the bid area will result in a return to the successful bidder of any overpayment.

NOTE: The above tract is located in or near an oyster restricted area and all operations in such area must be conducted in strict conformity with the stipulations and/or regulations of the Louisiana Department of Wildlife and Fisheries.

NOTE: The State of Louisiana does hereby reserve, and this lease shall be subject to, the imprescriptible right of surface use in the nature of a servitude in favor of the Department of Natural Resources, including its Offices and Commissions, for the sole purpose of implementing, constructing, servicing and maintaining approved coastal zone management and/or restoration projects. Utilization of any and all rights derived under this lease by the mineral lessee, its agents, successors or assigns, shall not interfere with nor hinder the reasonable surface use by the Department of Natural Resources, its Offices or Commissions, as hereinabove reserved.

Applicant: Wolf Energy, Inc.

Bidder	Cash Payment	Price / Acre	Rental	Oil	Gas	Other



±1,051 ACRES
P.O.B.
X = 2,563,250.00
Y = 547,958.70'

TR 33215
1,051 +/- ACS.
FEB., 2001

ORLEANS AND/OR ST. BERNARD AND/OR ST. TAMMANY PARISHES, LOUISIANA

Scale- 1"=2000'

339

TRACT 33216 - PORTION OF BLOCK 2, NORTH LAKE BORGNE AREA, St. Bernard and St. Tammany Parishes, Louisiana

All of the lands now or formerly constituting the beds and bottoms of all water bodies of every nature and description and all islands and other lands formed by accretion or reliction, except tax lands, belonging to the State of Louisiana and not under mineral lease on February 14, 2001, situated in St. Bernard and St. Tammany Parishes, Louisiana, and more particularly described as follows: Beginning at a point on the North boundary of Block 2, North Lake Borgne Area, having Coordinates of X = 2,563,250.00 and Y = 547,958.70; thence South 9,000.00 feet to a point on the South boundary of said Block 2 having Coordinates of X = 2,563,250.00 and Y = 538,958.70; thence West 9,000.00 feet along the said South boundary of said Block 2 to its Southwest corner having Coordinates of X = 2,554,250.00 and Y = 538,958.70; thence North 9,000.00 feet along the West boundary of said Block 2 to its Northwest corner having Coordinates of X = 2,554,250.00 and Y = 547,958.70; thence East 9,000.00 feet along the North boundary of said Block 2 to the point of beginning, containing approximately **1,794 acres**, as shown outlined in red on a plat on file in the Office of Mineral Resources, Department of Natural Resources, as provided by the applicant. All bearings, distances and coordinates are based on Louisiana Coordinate System of 1927 (South Zone).

NOTE: The boundary description and plat for this tract as shown and as advertised were supplied by the nominating party and have not been checked for accuracy by the staff of the Office of Mineral Resources. Anything which may affect the acreage, the shape or the location of the tract, such as non-closure of or incorrect X, Y coordinates or title disputed acreage, or which may affect the status of the tract for leasing, such as overlap of prior leases or nominated tracts, or which may affect potential operations on leases taken, such as inclusion in areas under the jurisdiction of the Department of Wildlife and Fisheries, will not be specifically determined unless and until a bid on this tract is accepted by the Mineral Board; which bid will be accepted on a per acre basis and which acceptance will be conditional upon such specific determinations being made. Once a bid is conditionally accepted by the Mineral Board, the staff will, within a period following the date of the lease sale, determine the acreage, shape and location of the potential lease area of the tract, the status for leasing of all or any portion thereof, and any conditions which may affect potential operations thereon. These determinations may render all or a portion of the bid area unleaseable or may increase or decrease the State claimed acreage such that the total bonus/rental ultimately required may either exceed the bonus/rental paid at the lease sale, which will require additional payment by the successful bidder, or allow the successful bidder a refund of excessive payment. The successful bidder will be notified of the determinations by the staff and given an opportunity to view the bid area acreage, configuration and location as it has been specifically determined. If all or a portion of the bid area is unleaseable due to overlap of an existing lease, the successful bidder will be given an opportunity to accept or reject a new lease on that portion of the bid area which is not unleaseable. If rejected, the bid and all monies accompanying the bid will be returned to the successful bidder and no lease will be issued. In all other cases