

Bidder	Cash Payment	Price / Acre	Rental	Oil	Gas	Other



P.O.B.
X= 2,534,281.47
Y= 320,280.00

T17S-R15E
T18S-R15E

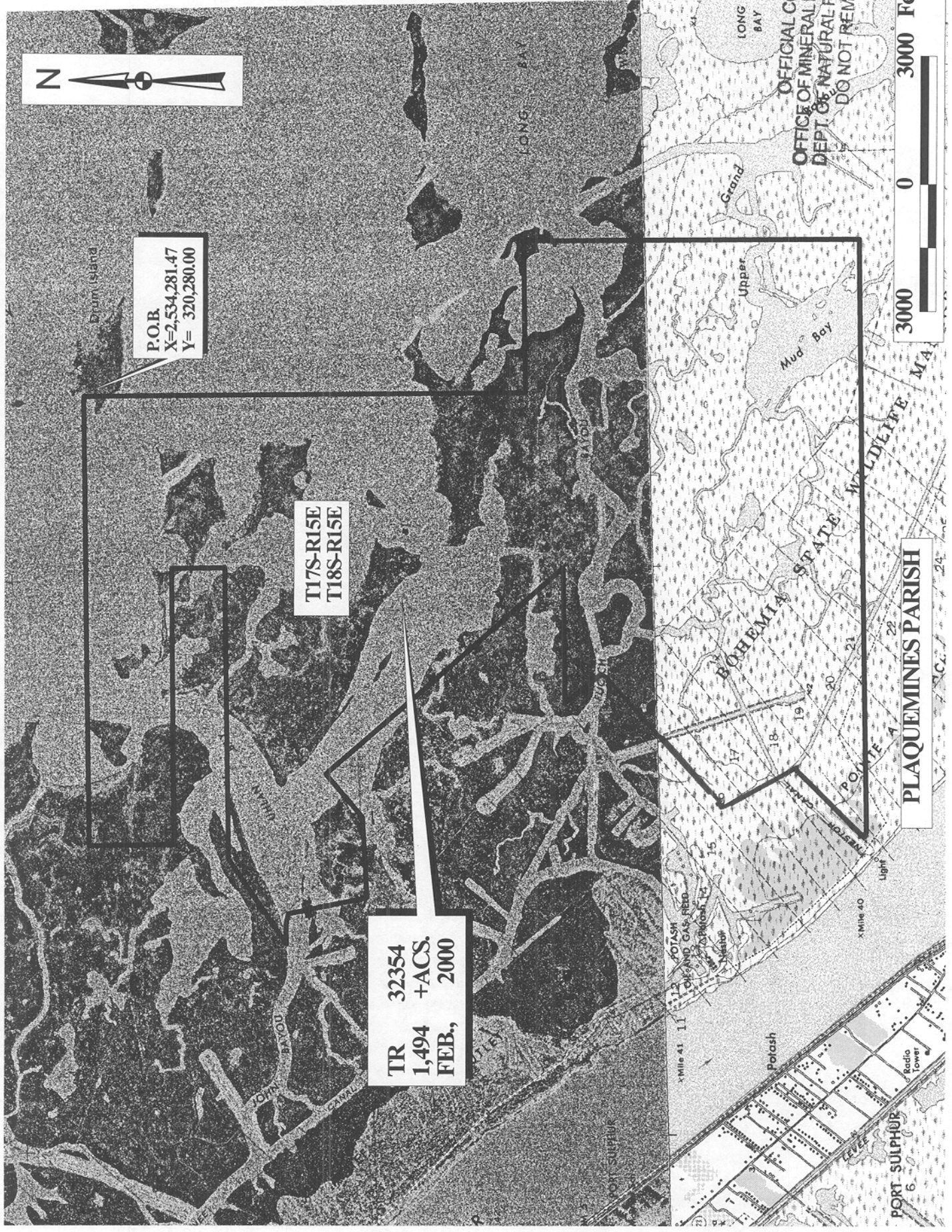
TR 32354
1,494 +ACS.
FEB., 2000

OFFICIAL COPY
OFFICE OF MINERAL RESOURCES
DEPT. OF NATURAL RESOURCES
DO NOT REMOVE

3000 0 3000 Feet

PLAQUEMINES PARISH

170



TRACT 32355 - Plaquemines Parish, Louisiana

All of the lands now or formerly constituting the beds and bottoms of all water bodies of every nature and description and all islands and other lands formed by accretion or reliction, except tax lands, owned by and not under mineral lease from the State of Louisiana on February 9, 2000, situated in Plaquemines Parish, Louisiana, within the following described boundaries: Beginning at a point having Coordinates of X = 2,544,716.47 and Y = 320,280.00; thence South 10,435.00 feet; thence West 10,435.00 feet to a point having Coordinates of X = 2,534,281.47 and Y = 309,845.00; thence North 10,435.00 feet; thence East 10,435.00 feet to the point of beginning, containing approximately **2,290 acres**, as shown outlined in red on a plat on file in the Office of Mineral Resources, Department of Natural Resources. All bearings, distances and coordinates are based on Louisiana Coordinate System of 1927 (South Zone).

NOTE: The above tract is located in or near an oyster restricted area and all operations in such area must be conducted in strict conformity with the stipulations and/or regulations of the Louisiana Department of Wildlife and Fisheries.

NOTE: The State of Louisiana does hereby reserve, and this lease shall be subject to, the imprescriptible right of surface use in the nature of a servitude in favor of the Department of Natural Resources, including its Offices and Commissions, for the sole purpose of implementing, constructing, servicing and maintaining approved coastal zone management and/or restoration projects. Utilization of any and all rights derived under this lease by the mineral lessee, its agents, successors or assigns, shall not interfere with nor hinder the reasonable surface use by the Department of Natural Resources, its Offices or Commissions, as hereinabove reserved.

Applicant: Jessica Cooper

Bidder	Cash Payment	Price / Acre	Rental	Oil	Gas	Other



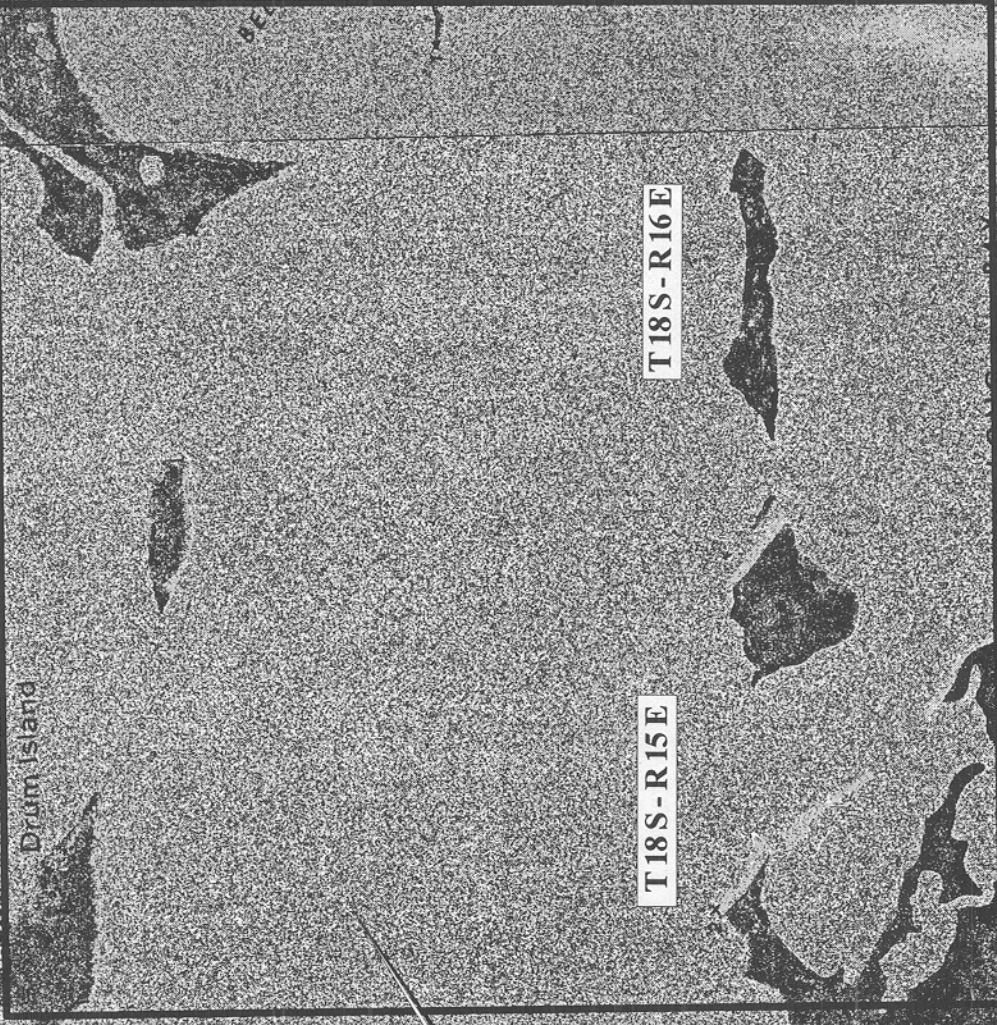
P.O.B.
X= 2,544,716.47
Y= 320,280.00

T17S-R16E

T17S-R15E

T18S-R16E

T18S-R15E



OFFICIAL COPY
OFFICE OF MINERAL RESOURCES
DEPT. OF NATURAL RESOURCES
DO NOT REMOVE



PLAQUEMINES PARISH

TR 32355
2,290 + ACS.
FEB, 2000

Drum Island

RAYOU