

TRACT 45259 - Iberia and St. Martin Parishes, Louisiana

A certain Tract of land, excluding the beds and bottoms of all navigable waters, belonging to and not presently under mineral lease from Iberia Parish on January 8, 2020, being more fully described as follows: That portion of that certain tract or parcel of land containing 62.471 acres, more or less, situated in Township 11 South, Range 6 East, and Township 12 South, Range 6 East, Iberia Parish, Louisiana, and being described as Tract Nos. 93 & 96 on that certain Plat of the United States Naval Auxiliary Air Station, by F. Shutts' Sons, dated May 18, 1956, recorded in Plat Book 4, Page 63, in the records of Iberia Parish, Louisiana, lying within the following X and Y Coordinates: Beginning at a point having Coordinates of X = 1,820,180.00 and Y = 506,740.00; thence South 76 degrees 33 minutes 39 seconds East 13,859.25 feet to a point having Coordinates of X = 1,833,659.74 and Y = 503,518.91; thence South 13 degrees 26 minutes 21 seconds West 4,583.48 feet to a point having Coordinates of X = 1,832,594.47 and Y = 499,060.93; thence North 76 degrees 33 minutes 39 seconds West 13,859.25 feet to a point having Coordinates of X = 1,819,114.73 and Y = 502,282.03; thence North 13 degrees 26 minutes 21 seconds East 4,583.48 feet to the point of beginning, containing approximately **10 acres**, all as more particularly outlined on a plat on file in the Office of Mineral Resources, Department of Natural Resources. The description is based on information provided by the State Agency regarding location and ownership of surface and mineral rights. All bearings, distances and coordinates, if applicable, are based on Louisiana Coordinate System of 1927, (North or South Zone).

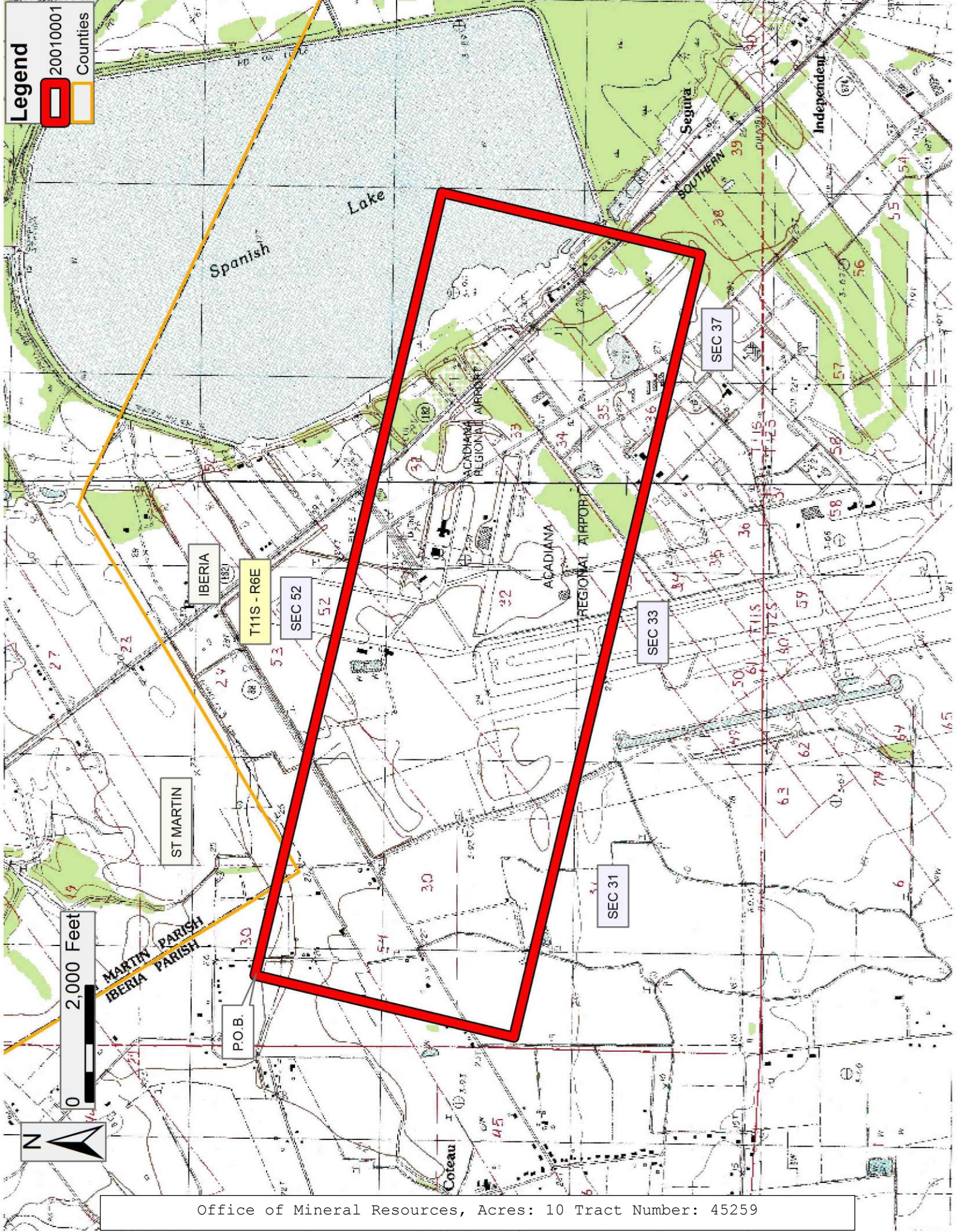
NOTE: The above description of the Tract nominated for lease has been provided and corrected, where required, exclusively by the nomination party. Any mineral lease selected from this Tract and awarded by the Louisiana State Mineral and Energy Board shall be without warranty of any kind, either express, implied, or statutory, including, but not limited to, the implied warranties of merchantability and fitness for a particular purpose. Should the mineral lease awarded by the Louisiana State Mineral and Energy Board be subsequently modified, cancelled or abrogated due to the existence of conflicting leases, operating agreements, private claims or other future obligations or conditions which may affect all or any portion of the leased Tract, it shall not relieve the Lessee of the obligation to pay any bonus due thereon to the Louisiana State Mineral and Energy Board, nor shall the Louisiana State Mineral and Energy Board be obligated to refund any consideration paid by the Lessor prior to such modification, cancellation, or abrogation, including, but not limited to, bonuses, rentals and royalties.

Applicant: CARTER OIL & GAS, INC. to Agency and by Resolution from the Iberia Parish authorizing the Mineral Board to act in its behalf

Bidder	Cash Payment	Price/Acre	Rental	Oil	Gas	Other

Legend

- 20010001
- Counties



Office of Mineral Resources, Acres: 10 Tract Number: 45259

TRACT 45260 - Iberia Parish, Louisiana

A certain Tract of land, excluding the beds and bottoms of all navigable waters, belonging to and not presently under mineral lease from Iberia Parish Police Jury on January 8, 2020, being more fully described as follows: That certain tract or parcel of land being described as: Beginning at a point having Coordinates of X = 1,826,550.00 and Y = 507,690.00; thence South 40 degrees 32 minutes 05 seconds East 2,771.27 feet to a point having Coordinates of X = 1,828,351.07 and Y = 505,583.80; thence South 50 degrees 15 minutes 09 seconds West 6,656.91 feet to a point having Coordinates of X = 1,823,232.77 and Y = 501,327.35; thence North 29 degrees 10 minutes 32 seconds West 3,759.64 feet to a point having Coordinates of X = 1,821,400.00 and Y = 504,610.00; thence North 59 degrees 07 minutes 05 seconds East 6,000.74 feet to the point of beginning, containing approximately **405 acres**. Said tract being a portion of that certain tract or parcel of land containing 926.787 acres, more or less, situated in Sections 32, 33, 34, 52, & 53, Township 11 South, Range 6 East, Iberia Parish, Louisiana, and being described as Tract No. 1 on that certain Plat of the United States Naval Auxiliary Air Station, by F. Shutts' Sons, dated May 18, 1956, recorded in Plat Book 4, Page 63, in the records of Iberia Parish, Louisiana. The description is based on information provided by the State Agency regarding location and ownership of surface and mineral rights. All bearings, distances and coordinates, if applicable, are based on Louisiana Coordinate System of 1927, (North or South Zone).

NOTE: The above description of the Tract nominated for lease has been provided and corrected, where required, exclusively by the nomination party. Any mineral lease selected from this Tract and awarded by the Louisiana State Mineral and Energy Board shall be without warranty of any kind, either express, implied, or statutory, including, but not limited to, the implied warranties of merchantability and fitness for a particular purpose. Should the mineral lease awarded by the Louisiana State Mineral and Energy Board be subsequently modified, cancelled or abrogated due to the existence of conflicting leases, operating agreements, private claims or other future obligations or conditions which may affect all or any portion of the leased Tract, it shall not relieve the Lessee of the obligation to pay any bonus due thereon to the Louisiana State Mineral and Energy Board, nor shall the Louisiana State Mineral and Energy Board be obligated to refund any consideration paid by the Lessor prior to such modification, cancellation, or abrogation, including, but not limited to, bonuses, rentals and royalties.

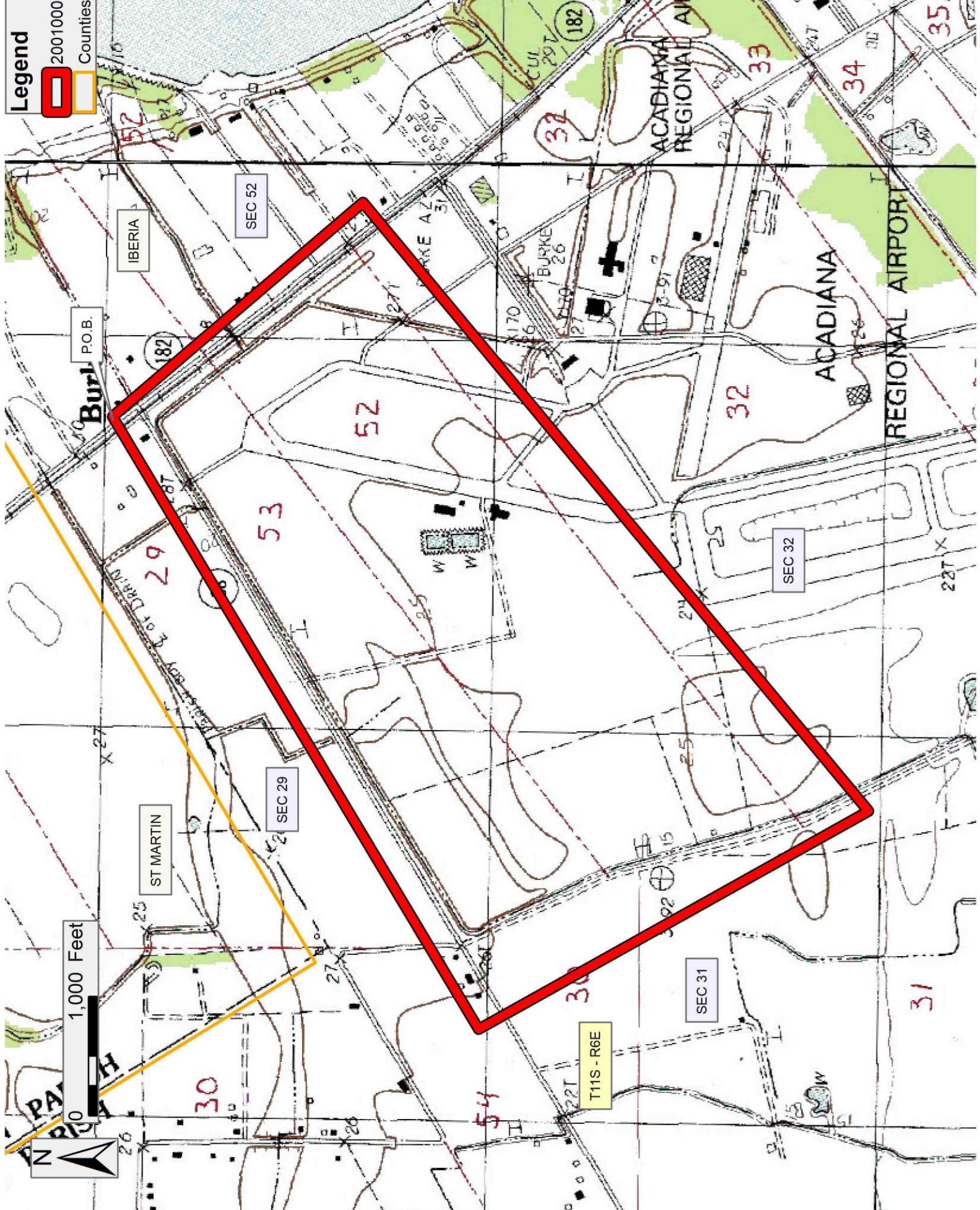
Applicant: CARTER OIL & GAS, INC. to Agency and by Resolution from the Iberia Parish Police Jury authorizing the Mineral Board to act in its behalf

Bidder	Cash Payment	Price/Acre	Rental	Oil	Gas	Other

Legend

20010005

Counties



Office of Mineral Resources, Acres: 405 Tract Number: 45260

TRACT 45261 - Iberia Parish, Louisiana

A certain Tract of land, excluding the beds and bottoms of all navigable waters, belonging to and not presently under mineral lease from Iberia Parish Police Jury on January 8, 2020, being more fully described as follows: That certain tract or parcel of land being described as: Beginning at a point having Coordinates of X = 1,824,990.00 and Y = 498,180.00; thence North 29 degrees 10 minutes 32 seconds West 3,604.67 feet to a point having Coordinates of X = 1,823,232.77 and Y = 501,327.35; thence North 50 degrees 15 minutes 09 seconds East 6,656.91 feet to a point having Coordinates of X = 1,828,351.07 and Y = 505,583.80; thence South 40 degrees 32 minutes 05 seconds East 3,768.10 feet to a point having Coordinates of X = 1,830,800.00 and Y = 502,720.00; thence South 51 degrees 59 minutes 44 seconds West 7,373.45 feet to the point of beginning, containing approximately **519 acres**. Said tract being a portion of that certain tract or parcel of land containing 926.787 acres, more or less, situated in Sections 32, 33, 34, 52, & 53, Township 11 South, Range 6 East, Iberia Parish, Louisiana, and being described as Tract No. 1 on that certain Plat of the United States Naval Auxiliary Air Station, by F. Shutts' Sons, dated May 18, 1956, recorded in Plat Book 4, Page 63, in the records of Iberia Parish, Louisiana. The description is based on information provided by the State Agency regarding location and ownership of surface and mineral rights. All bearings, distances and coordinates, if applicable, are based on Louisiana Coordinate System of 1927, (North or South Zone).

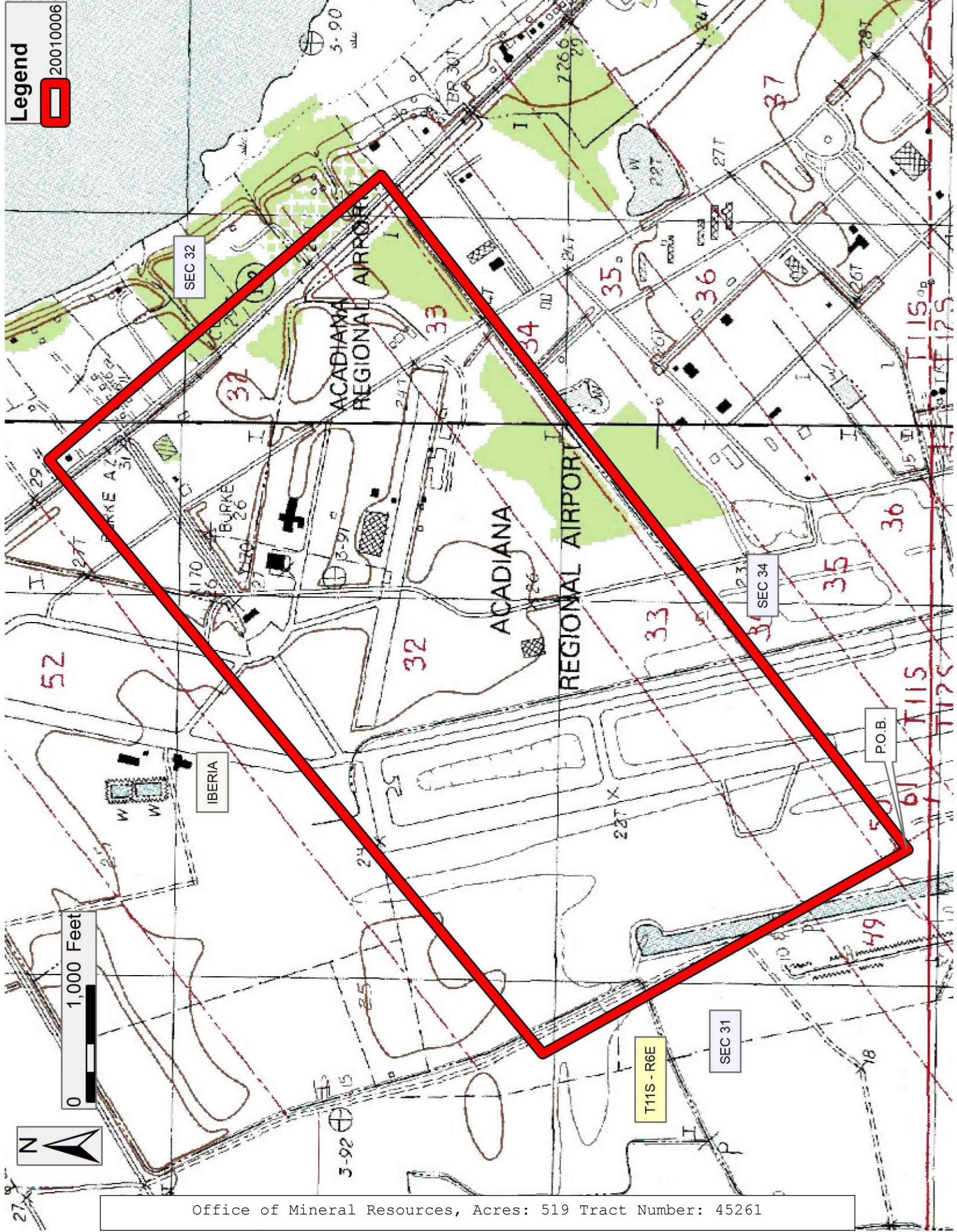
NOTE: The above description of the Tract nominated for lease has been provided and corrected, where required, exclusively by the nomination party. Any mineral lease selected from this Tract and awarded by the Louisiana State Mineral and Energy Board shall be without warranty of any kind, either express, implied, or statutory, including, but not limited to, the implied warranties of merchantability and fitness for a particular purpose. Should the mineral lease awarded by the Louisiana State Mineral and Energy Board be subsequently modified, cancelled or abrogated due to the existence of conflicting leases, operating agreements, private claims or other future obligations or conditions which may affect all or any portion of the leased Tract, it shall not relieve the Lessee of the obligation to pay any bonus due thereon to the Louisiana State Mineral and Energy Board, nor shall the Louisiana State Mineral and Energy Board be obligated to refund any consideration paid by the Lessor prior to such modification, cancellation, or abrogation, including, but not limited to, bonuses, rentals and royalties.

Applicant: CARTER OIL & GAS, INC. to Agency and by Resolution from the Iberia Parish Police Jury authorizing the Mineral Board to act in its behalf

Bidder	Cash Payment	Price/Acre	Rental	Oil	Gas	Other

Legend

20010006



Office of Mineral Resources, Acres: 519 Tract Number: 45261

TRACT 45262 - Iberia Parish, Louisiana

A certain Tract of land, excluding the beds and bottoms of all navigable waters, belonging to and not presently under mineral lease from Iberia Parish on January 8, 2020, being more fully described as follows: That portion of that certain tract or parcel of land containing 62.471 acres, more or less, situated in Township 11 South, Range 6 East, and Township 12 South, Range 6 East, Iberia Parish, Louisiana, and being described as Tract Nos. 93 & 96 on that certain Plat of the United States Naval Auxiliary Air Station, by F. Shutts' Sons, dated May 18, 1956, recorded in Plat Book 4, Page 63, in the records of Iberia Parish, Louisiana, lying within the following X and Y Coordinates: Beginning at a point having Coordinates of X = 1,819,114.73 and Y = 502,282.03; thence South 76 degrees 33 minutes 39 seconds East 13,859.25 feet to a point having Coordinates of X = 1,832,594.47 and Y = 499,060.93; thence South 13 degrees 26 minutes 21 seconds West 5,498.91 feet to a point having Coordinates of X = 1,831,316.45 and Y = 493,712.60; thence North 76 degrees 33 minutes 39 seconds West 13,859.25 feet to a point having Coordinates of X = 1,817,836.71 and Y = 496,933.70; thence North 13 degrees 26 minutes 21 seconds East 5,498.91 feet to the point of beginning, containing approximately **30 acres**, all as more particularly outlined on a plat on file in the Office of Mineral Resources, Department of Natural Resources. The description is based on information provided by the State Agency regarding location and ownership of surface and mineral rights. All bearings, distances and coordinates, if applicable, are based on Louisiana Coordinate System of 1927, (North or South Zone).

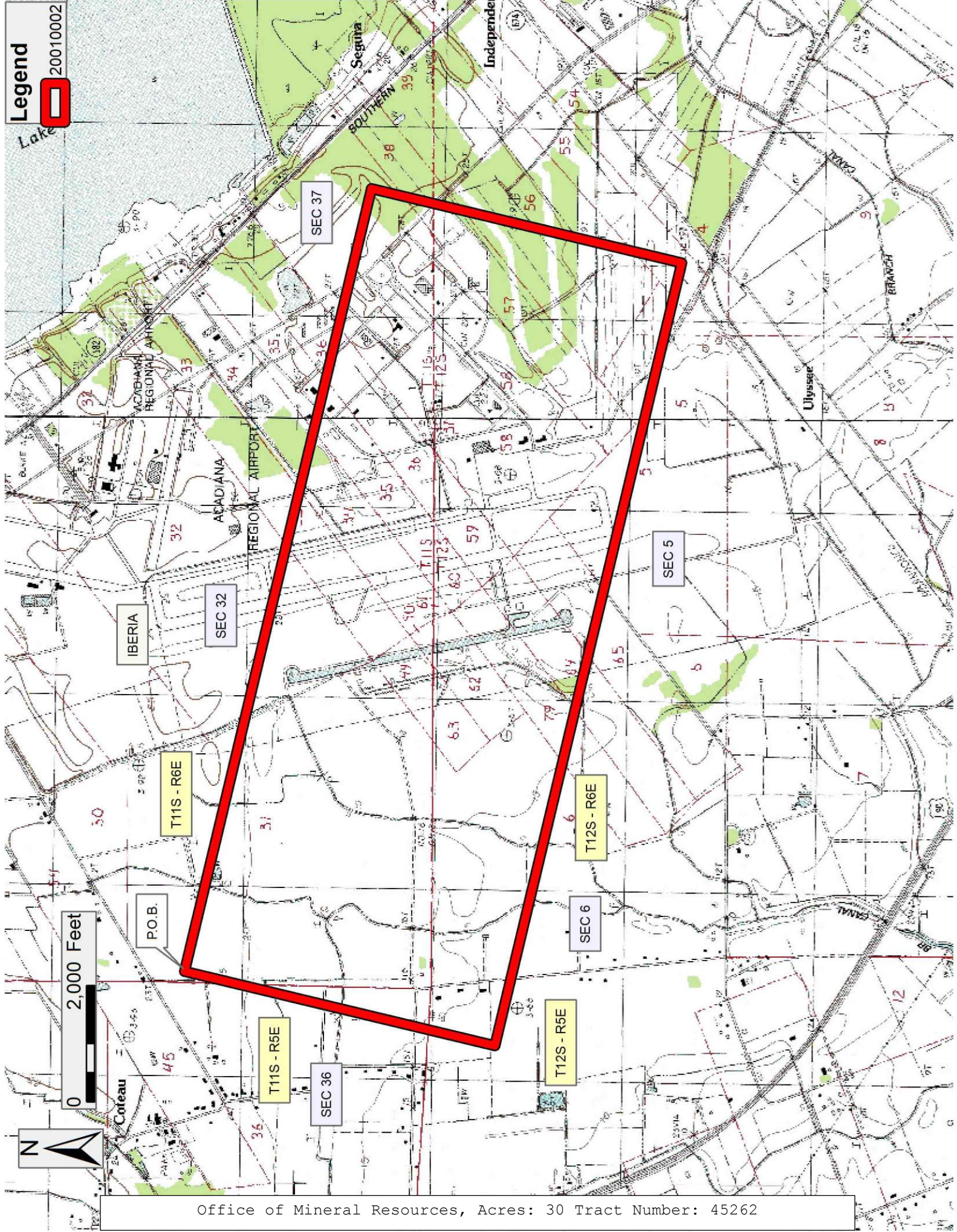
NOTE: The above description of the Tract nominated for lease has been provided and corrected, where required, exclusively by the nomination party. Any mineral lease selected from this Tract and awarded by the Louisiana State Mineral and Energy Board shall be without warranty of any kind, either express, implied, or statutory, including, but not limited to, the implied warranties of merchantability and fitness for a particular purpose. Should the mineral lease awarded by the Louisiana State Mineral and Energy Board be subsequently modified, cancelled or abrogated due to the existence of conflicting leases, operating agreements, private claims or other future obligations or conditions which may affect all or any portion of the leased Tract, it shall not relieve the Lessee of the obligation to pay any bonus due thereon to the Louisiana State Mineral and Energy Board, nor shall the Louisiana State Mineral and Energy Board be obligated to refund any consideration paid by the Lessor prior to such modification, cancellation, or abrogation, including, but not limited to, bonuses, rentals and royalties.

Applicant: CARTER OIL & GAS, INC. to Agency and by Resolution from the Iberia Parish authorizing the Mineral Board to act in its behalf

Bidder	Cash Payment	Price/Acre	Rental	Oil	Gas	Other



Lake



TRACT 45263 - Iberia Parish, Louisiana

A certain Tract of land, excluding the beds and bottoms of all navigable waters, belonging to and not presently under mineral lease from Iberia Parish on January 8, 2020, being more fully described as follows: That portion of that certain tract or parcel of land containing 62.471 acres, more or less, situated in Township 11 South, Range 6 East, and Township 12 South, Range 6 East, Iberia Parish, Louisiana, and being described as Tract Nos. 93 & 96 on that certain Plat of the United States Naval Auxiliary Air Station, by F. Shutts' Sons, dated May 18, 1956, recorded in Plat Book 4, Page 63, in the records of Iberia Parish, Louisiana, lying within the following X and Y Coordinates: Beginning at a point having Coordinates of X = 1,837,840.00 and Y = 502,520.00; thence South 13 degrees 26 minutes 21 seconds West 14,198.81 feet to a point having Coordinates of X = 1,834,540.00 and Y = 488,710.00; thence North 76 degrees 33 minutes 39 seconds West 4,297.95 feet to a point having Coordinates of X = 1,830,359.74 and Y = 489,708.91; thence North 13 degrees 26 minutes 21 seconds East 14,198.81 feet to a point having Coordinates of X = 1,833,659.74 and Y = 503,518.91; thence South 76 degrees 33 minutes 39 seconds East 4,297.95 feet to the point of beginning, containing approximately **5 acres**, all as more particularly outlined on a plat on file in the Office of Mineral Resources, Department of Natural Resources. The description is based on information provided by the State Agency regarding location and ownership of surface and mineral rights. All bearings, distances and coordinates, if applicable, are based on Louisiana Coordinate System of 1927, (North or South Zone).

NOTE: The above description of the Tract nominated for lease has been provided and corrected, where required, exclusively by the nomination party. Any mineral lease selected from this Tract and awarded by the Louisiana State Mineral and Energy Board shall be without warranty of any kind, either express, implied, or statutory, including, but not limited to, the implied warranties of merchantability and fitness for a particular purpose. Should the mineral lease awarded by the Louisiana State Mineral and Energy Board be subsequently modified, cancelled or abrogated due to the existence of conflicting leases, operating agreements, private claims or other future obligations or conditions which may affect all or any portion of the leased Tract, it shall not relieve the Lessee of the obligation to pay any bonus due thereon to the Louisiana State Mineral and Energy Board, nor shall the Louisiana State Mineral and Energy Board be obligated to refund any consideration paid by the Lessor prior to such modification, cancellation, or abrogation, including, but not limited to, bonuses, rentals and royalties.

Applicant: CARTER OIL & GAS, INC. to Agency and by Resolution from the Iberia Parish authorizing the Mineral Board to act in its behalf

Bidder	Cash Payment	Price/Acre	Rental	Oil	Gas	Other

Legend
20010004
Counties



ST MARTIN

IBERIA

P.O.B.

T11S - R6E

SEC 10

Sumnerall

SEC 14

Independent

Seguna

SOUTHERN

SEC 56

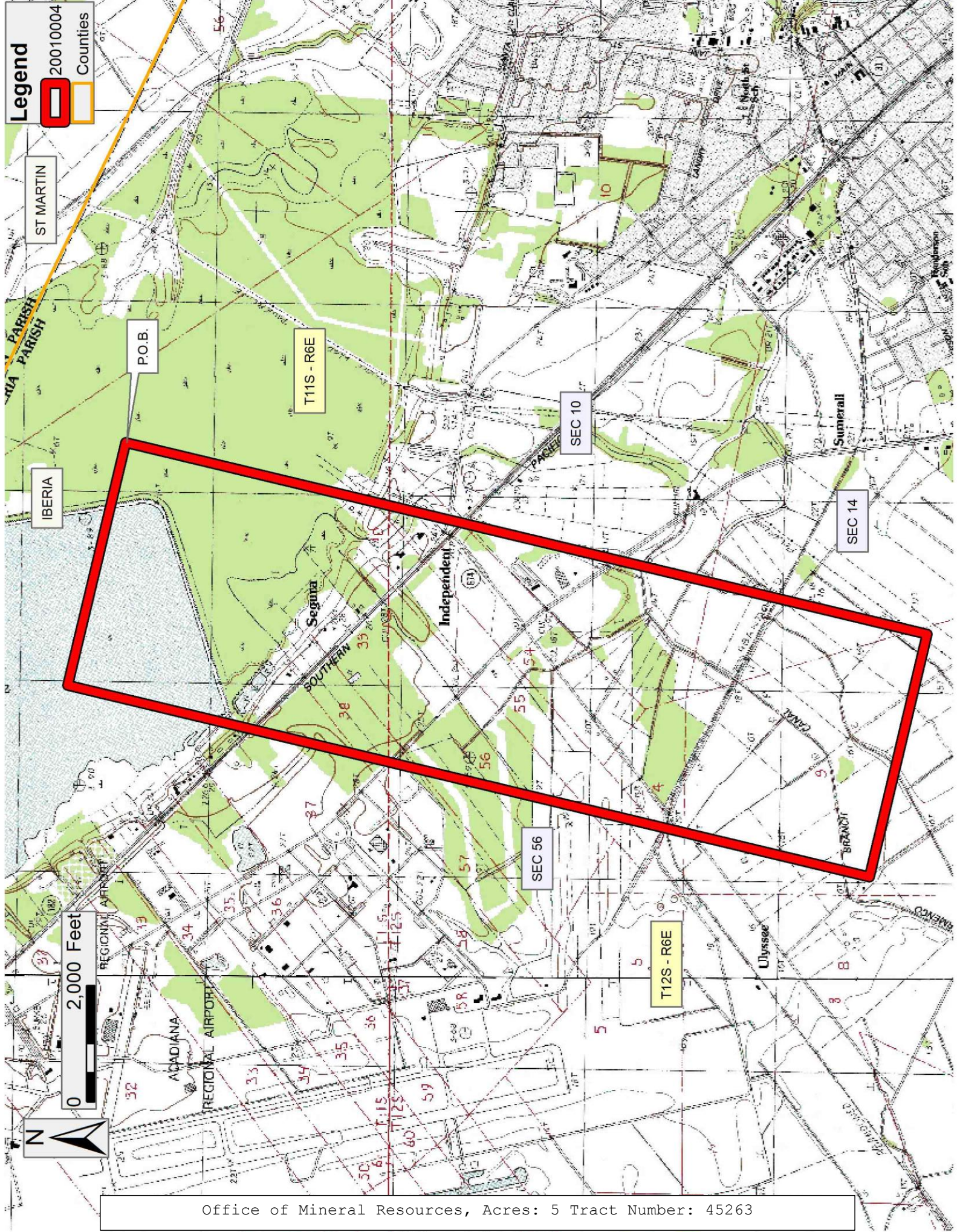
T12S - R6E

Ulysses

0 2,000 Feet



Office of Mineral Resources, Acres: 5 Tract Number: 45263



TRACT 45264 - Iberia Parish, Louisiana

A certain Tract of land, excluding the beds and bottoms of all navigable waters, belonging to and not presently under mineral lease from Iberia Parish on January 8, 2020, being more fully described as follows: That portion of that certain tract or parcel of land containing 62.471 acres, more or less, situated in Township 11 South, Range 6 East, and Township 12 South, Range 6 East, Iberia Parish, Louisiana, and being described as Tract Nos. 93 & 96 on that certain Plat of the United States Naval Auxiliary Air Station, by F. Shutts' Sons, dated May 18, 1956, recorded in Plat Book 4, Page 63, in the records of Iberia Parish, Louisiana, lying within the following X and Y Coordinates: Beginning at a point having Coordinates of X = 1,816,880.00 and Y = 492,930.00; thence North 13 degrees 26 minutes 21 seconds East 4,116.42 feet to a point having Coordinates of X = 1,817,836.71 and Y = 496,933.70; thence South 76 degrees 33 minutes 39 seconds East 13,859.25 feet to a point having Coordinates of X = 1,831,316.45 and Y = 493,712.60; thence South 13 degrees 26 minutes 21 seconds West 4,116.42 feet to a point having Coordinates of X = 1,830,359.74 and Y = 489,708.91; thence North 76 degrees 33 minutes 39 seconds West 13,859.25 feet to the point of beginning, containing approximately **20 acres**, all as more particularly outlined on a plat on file in the Office of Mineral Resources, Department of Natural Resources. The description is based on information provided by the State Agency regarding location and ownership of surface and mineral rights. All bearings, distances and coordinates, if applicable, are based on Louisiana Coordinate System of 1927, (North or South Zone).

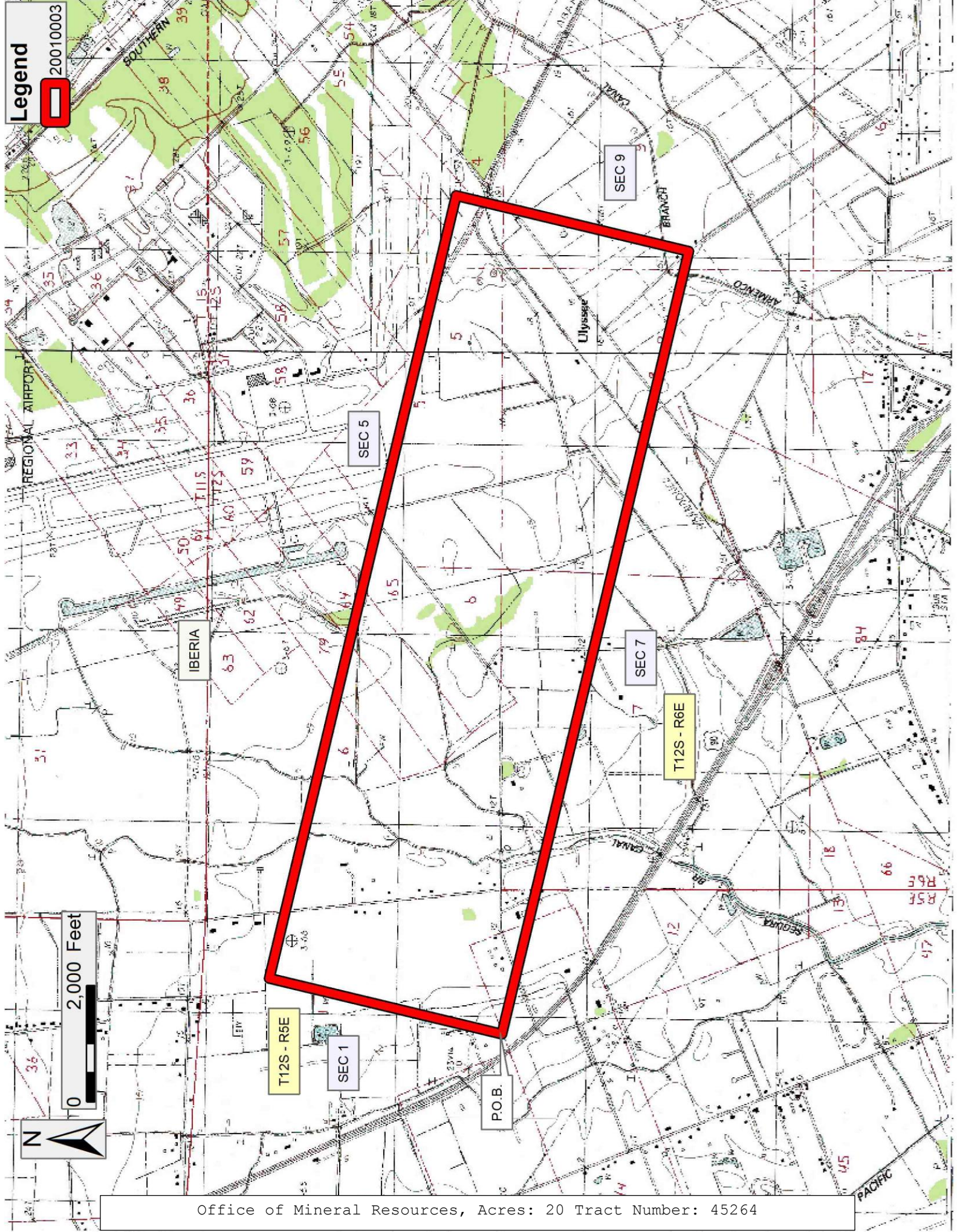
NOTE: The above description of the Tract nominated for lease has been provided and corrected, where required, exclusively by the nomination party. Any mineral lease selected from this Tract and awarded by the Louisiana State Mineral and Energy Board shall be without warranty of any kind, either express, implied, or statutory, including, but not limited to, the implied warranties of merchantability and fitness for a particular purpose. Should the mineral lease awarded by the Louisiana State Mineral and Energy Board be subsequently modified, cancelled or abrogated due to the existence of conflicting leases, operating agreements, private claims or other future obligations or conditions which may affect all or any portion of the leased Tract, it shall not relieve the Lessee of the obligation to pay any bonus due thereon to the Louisiana State Mineral and Energy Board, nor shall the Louisiana State Mineral and Energy Board be obligated to refund any consideration paid by the Lessor prior to such modification, cancellation, or abrogation, including, but not limited to, bonuses, rentals and royalties.

Applicant: CARTER OIL & GAS, INC. to Agency and by Resolution from the Iberia Parish authorizing the Mineral Board to act in its behalf

Bidder	Cash Payment	Price/Acre	Rental	Oil	Gas	Other

Legend

20010003



Office of Mineral Resources, Acres: 20 Tract Number: 45264