

**TRACT 45253 - De Soto and Red River Parishes, Louisiana**

All of the lands now or formerly constituting the beds and bottoms of all water bodies of every nature and description as to which title is vested in the State of Louisiana, together with all islands arising therein and other lands formed by accretion or by reliction, where allowed by law, excepting tax adjudicated lands, and not presently under mineral lease on January 8, 2020, situated in De Soto and Red River Parishes, Louisiana, and more particularly described as follows: Beginning at the Northeast corner of State Lease No. 20516, as amended, having Coordinates of X = 1,697,958.30 and Y = 498,914.00, said point also being a point on State Lease No. 20801; thence East 242.70 feet along the boundary of said State Lease No. 20801 to a point being its Southeast corner having Coordinates of X = 1,698,201.00 and Y = 498,914.00; thence East 5,279.00 feet to a point having Coordinates of X = 1,703,480.00 and Y = 498,914.00; thence South 5,469.64 feet to a point having Coordinates of X = 1,703,480.00 and Y = 493,444.36; thence West 5,604.11 feet to the Southeast corner of said State Lease No. 20516, as amended, having Coordinates of X = 1,697,875.89 and Y = 493,444.36; thence North 00 degrees 48 minutes 11 seconds East 5,280.00 feet along the East line of said State Lease No. 20516, as amended, to a point having Coordinates of X = 1,697,949.89 and Y = 498,723.84; thence North 02 degrees 32 minutes 01 seconds East 190.35 feet along the East line of said State Lease No. 20516, as amended, to the point of beginning, containing approximately **11 acres**, all as more particularly outlined on a plat on file in the Office of Mineral Resources, Department of Natural Resources. All bearings, distances and coordinates are based on Louisiana Coordinate System of 1927, (North or South Zone), where applicable.

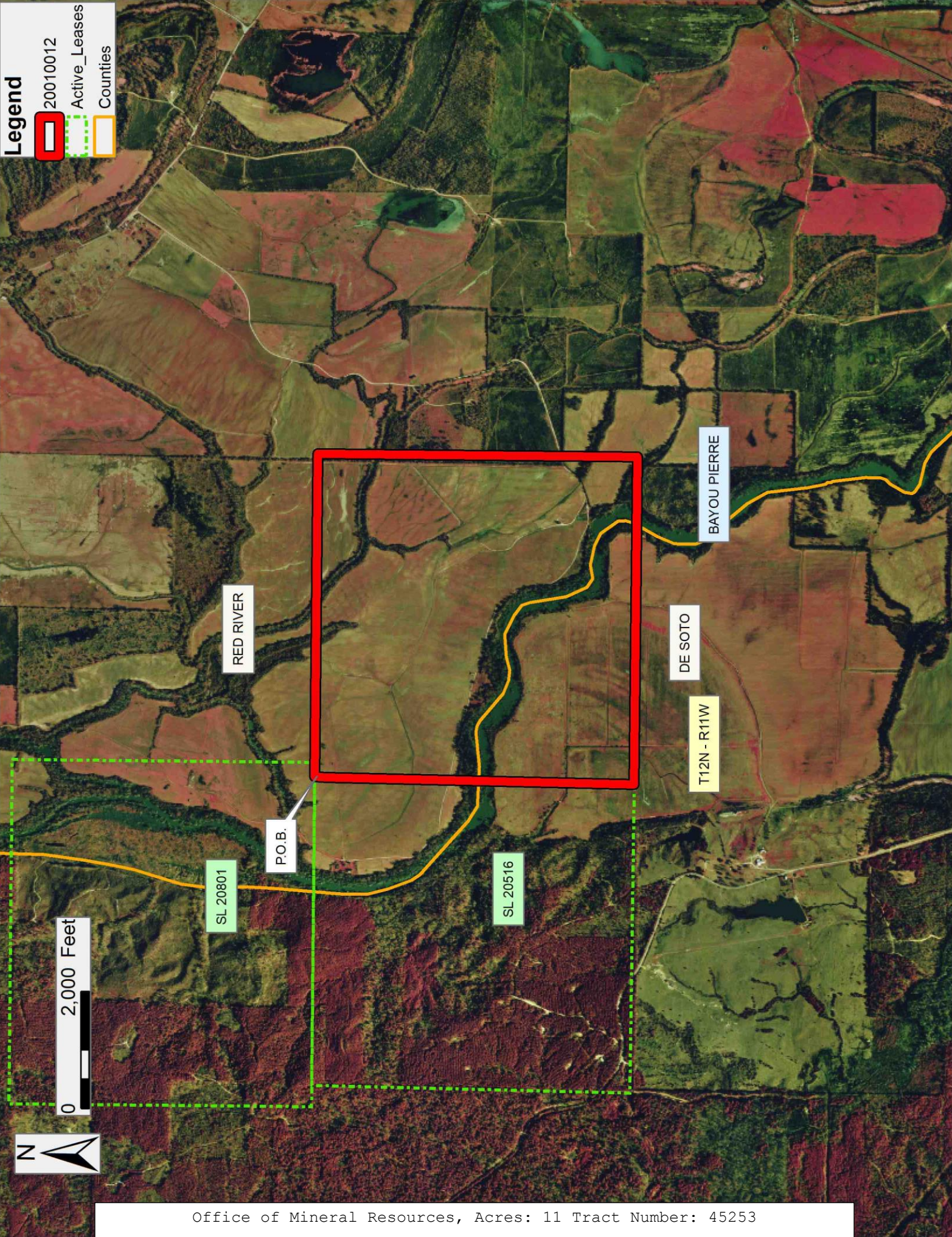
NOTE: The above description of the Tract nominated for lease has been provided and corrected, where required, exclusively by the nomination party. Any mineral lease selected from this Tract and awarded by the Louisiana State Mineral and Energy Board shall be without warranty of any kind, either express, implied, or statutory, including, but not limited to, the implied warranties of merchantability and fitness for a particular purpose. Should the mineral lease awarded by the Louisiana State Mineral and Energy Board be subsequently modified, cancelled or abrogated due to the existence of conflicting leases, operating agreements, private claims or other future obligations or conditions which may affect all or any portion of the leased Tract, it shall not relieve the Lessee of the obligation to pay any bonus due thereon to the Louisiana State Mineral and Energy Board, nor shall the Louisiana State Mineral and Energy Board be obligated to refund any consideration paid by the Lessor prior to such modification, cancellation, or abrogation, including, but not limited to, bonuses, rentals and royalties.

Applicant: RIVET EXPLORATION

Bidder	Cash Payment	Price/Acre	Rental	Oil	Gas	Other

**Legend**

- 20010012
- Active\_Leases
- Counties



**TRACT 45254 - Red River Parish, Louisiana**

All of the lands now or formerly constituting the beds and bottoms of all water bodies of every nature and description as to which title is vested in the State of Louisiana, together with all islands arising therein and other lands formed by accretion or by reliction, where allowed by law, excepting tax adjudicated lands, and not presently under mineral lease on January 8, 2020, situated in Red River Parish, Louisiana, and more particularly described as follows: Beginning at a point having Coordinates of X = 1,750,544.83 and Y = 455,854.15, also being the Northwest corner of State Lease No. 20404, as amended; thence North 00 degrees 08 minutes 24 seconds East 9,474.44 feet to a point having Coordinates of X = 1,750,567.99 and Y = 465,328.55; thence South 89 degrees 36 minutes 21 seconds East 4,085.02 feet to a point having Coordinates of X = 1,754,652.91 and Y = 465,300.45; thence South 00 degrees 12 minutes 47 seconds East 9,446.97 feet to a point on the North boundary line of State Lease No. 20404 having Coordinates of X = 1,754,688.06 and Y = 455,853.54; thence North 89 degrees 59 minutes 30 seconds West 4,143.23 feet along the North boundary line of State Lease No. 20404 to the point of beginning, **LESS AND EXCEPT** any right, title, and interest in lands owned by and not under lease from the State of Louisiana, on behalf of the Red River Parish School Board, situated in Section 16, Township 11 North, Range 9 West, Red River Parish, Louisiana, contained within the above described tract, containing approximately **138 acres**, all as more particularly outlined on a plat on file in the Office of Mineral Resources, Department of Natural Resources. All bearings, distances and coordinates are based on Louisiana Coordinate System of 1927, (North or South Zone), where applicable.

NOTE: The above description of the Tract nominated for lease has been provided and corrected, where required, exclusively by the nomination party. Any mineral lease selected from this Tract and awarded by the Louisiana State Mineral and Energy Board shall be without warranty of any kind, either express, implied, or statutory, including, but not limited to, the implied warranties of merchantability and fitness for a particular purpose. Should the mineral lease awarded by the Louisiana State Mineral and Energy Board be subsequently modified, cancelled or abrogated due to the existence of conflicting leases, operating agreements, private claims or other future obligations or conditions which may affect all or any portion of the leased Tract, it shall not relieve the Lessee of the obligation to pay any bonus due thereon to the Louisiana State Mineral and Energy Board, nor shall the Louisiana State Mineral and Energy Board be obligated to refund any consideration paid by the Lessor prior to such modification, cancellation, or abrogation, including, but not limited to, bonuses, rentals and royalties.

Applicant: LAKE FIELD RESOURCES

Bidder	Cash Payment	Price/ Acre	Rental	Oil	Gas	Other

**Legend**

20010007



Active\_Leases



2,000 Feet

0



RED RIVER

RED RIVER

SL 20404

P.O.B.

T11N - R9W

**TRACT 45255 - Vermilion Parish, Louisiana**

All of the lands now or formerly constituting the beds and bottoms of all water bodies of every nature and description as to which title is vested in the State of Louisiana, together with all islands arising therein and other lands formed by accretion or by reliction, where allowed by law, excepting tax adjudicated lands, and not presently under mineral lease on January 8, 2020, situated in Vermilion Parish, Louisiana, and more particularly described as follows: Beginning at a point having Coordinates of X = 1,736,737.05 and Y = 395,375.00, said point being the southeast corner of State Operating Agreement A0386; thence South 00 degrees 00 minutes 06 seconds West 3,244.99 feet to a point having Coordinates of X = 1,736,736.95 and Y = 392,130.01; thence South 51 degrees 51 minutes 26 seconds West 2,390.09 feet to a point having Coordinates of X = 1,734,857.21 and Y = 390,653.83; thence East 8,715.97 feet to a point having Coordinates of X = 1,743,573.18 and Y = 390,653.82; thence South 3,669.00 feet to a point having Coordinates of X = 1,743,573.18 and Y = 386,984.82; thence West 13,337.00 feet to a point having Coordinates of X = 1,730,236.18 and Y = 386,984.82; thence North 13,675.06 feet to a point having Coordinates of X = 1,730,236.18 and Y = 400,659.88; thence East 6,642.82 feet to a point having Coordinates of X = 1,736,879.00 and Y = 400,659.88; thence South 1,446.00 feet to a point having Coordinates of X = 1,736,879.00 and Y = 399,213.88; thence South 34 degrees 13 minutes 00 seconds West 1,555.27 feet a point having Coordinates of X = 1,736,004.43 and Y = 397,927.80; thence North 70 degrees 44 minutes 43 seconds West 2,505.60 feet a point having Coordinates of X = 1,733,638.99 and Y = 398,754.07; thence South 00 degrees 24 minutes 24 seconds West 1,867.16 feet a point having Coordinates of X = 1,733,625.74 and Y = 396,886.96, said point being the northwest corner of said State Operating Agreement A0386; thence along the western and southern boundaries of said State Operating Agreement A0386 the following courses and distances, to wit: South 00 degrees 24 minutes 24 seconds West 1,865.25 feet a point having Coordinates of X = 1,733,612.50 and Y = 395,021.76, said point being the southwest corner of said State Operating Agreement A0386; and North 83 degrees 33 minutes 00 seconds East 3,144.46 feet to the point of beginning, **LESS AND EXCEPT** any right, title, and interest in lands owned by and not under lease from the State of Louisiana, on behalf of the Vermilion Parish School Board, situated in Section 16, Township 15 South, Range 3 East, Vermilion Parish, Louisiana, contained within the above described tract, containing approximately **1,640 acres**, all as more particularly outlined on a plat on file in the Office of Mineral Resources, Department of Natural Resources. All bearings, distances and coordinates are based on Louisiana Coordinate System of 1927, (North or South Zone), where applicable.

NOTE: The above description of the Tract nominated for lease has been provided and corrected, where required, exclusively by the nomination party. Any mineral lease selected from this Tract and awarded by the Louisiana State Mineral and Energy Board shall be without warranty of any kind, either express, implied, or statutory, including, but not limited to, the implied warranties of merchantability and fitness for a particular purpose. Should the mineral lease awarded by the Louisiana State Mineral and Energy Board be

subsequently modified, cancelled or abrogated due to the existence of conflicting leases, operating agreements, private claims or other future obligations or conditions which may affect all or any portion of the leased Tract, it shall not relieve the Lessee of the obligation to pay any bonus due thereon to the Louisiana State Mineral and Energy Board, nor shall the Louisiana State Mineral and Energy Board be obligated to refund any consideration paid by the Lessor prior to such modification, cancellation, or abrogation, including, but not limited to, bonuses, rentals and royalties.

NOTE: The State of Louisiana does hereby reserve, and this lease shall be subject to, the imprescriptible right of surface use in the nature of a servitude in favor of the Department of Natural Resources, including its Offices and Commissions, for the sole purpose of implementing, constructing, servicing and maintaining approved coastal zone management and/or restoration projects. Utilization of any and all rights derived under this lease by the mineral lessee, its agents, successors or assigns, shall not interfere with nor hinder the reasonable surface use by the Department of Natural Resources, its Offices or Commissions, as herein above reserved.

NOTE: This tract is located in an area designated by the Louisiana Legislature or the Wildlife and Fisheries Commission as a Public Oyster Seed Ground, Reservation, or area of Calcasieu or Sabine Lake. Proposed projects occurring in these areas will be evaluated on a case by case basis by Louisiana Department of Wildlife & Fisheries. Modifications to proposed project features including, but not limited to, access routes, well sites, flowlines, and appurtenant structures maybe required by the Louisiana Department of Wildlife and Fisheries. In addition, compensatory mitigation will be required to offset unavoidable habitat impacts.

Applicant: ROBERT A. SCHROEDER, INC.

Bidder	Cash Payment	Price/Acre	Rental	Oil	Gas	Other



**Legend**



20010009

Active\_Leases



VERMILION

T15S - R3E

LITTLE WHITE LAKE

P.O.B.

VERMILION BAY

A0386

0 2,500 Feet



Office of Mineral Resources, Acres: 1640 Tract Number: 45255

**TRACT 45256 - Vermilion Parish, Louisiana**

All of the lands now or formerly constituting the beds and bottoms of all water bodies of every nature and description as to which title is vested in the State of Louisiana, together with all islands arising therein and other lands formed by accretion or by reliction, where allowed by law, excepting tax adjudicated lands, and not presently under mineral lease on January 8, 2020, situated in Vermilion Parish, Louisiana, and more particularly described as follows: Beginning at a point having Coordinates of X = 1,733,625.74 and Y = 396,886.96, said point being the northwest corner of State Operating Agreement A0386; thence North 00 degrees 24 minutes 24 seconds East 1,867.16 feet to a point having Coordinates of X = 1,733,638.99 and Y = 398,754.07; thence South 70 degrees 44 minutes 42 seconds East 2,505.60 feet to a point having Coordinates of X = 1,736,004.43 and Y = 397,927.79; thence North 34 degrees 13 minutes 00 seconds East 1,555.28 feet to a point having Coordinates of X = 1,736,879.00 and Y = 399,213.88; thence South 56 degrees 33 minutes 26 seconds East 729.73 feet to a point having Coordinates of X = 1,737,487.92 and Y = 398,811.72; thence South 44 degrees 30 minutes 18 seconds East 300.30 feet to a point having Coordinates of X = 1,737,698.42 and Y = 398,597.55; thence South 46 degrees 31 minutes 42 seconds East 500.00 feet to a point having Coordinates of X = 1,738,061.28 and Y = 398,253.55; thence South 24 degrees 37 minutes 48 seconds East 502.52 feet to a point having Coordinates of X = 1,738,270.71 and Y = 397,796.75; thence South 22 degrees 02 minutes 26 seconds East 412.76 feet to a point having Coordinates of X = 1,738,425.60 and Y = 397,414.16; thence South 21 degrees 18 minutes 59 seconds East 412.78 feet to a point having Coordinates of X = 1,738,575.65 and Y = 397,029.62; thence South 17 degrees 39 minutes 11 seconds East 132.32 feet to a point having Coordinates of X = 1,738,615.78 and Y = 396,903.53; thence South 45 degrees 35 minutes 04 seconds West 125.60 feet to a point having Coordinates of X = 1,738,526.06 and Y = 396,815.63; thence South 06 degrees 55 minutes 36 seconds East 437.74 feet to a point having Coordinates of X = 1,738,578.86 and Y = 396,381.08; thence South 08 degrees 20 minutes 56 seconds West 667.44 feet to a point having Coordinates of X = 1,738,481.94 and Y = 395,720.72; thence South 25 degrees 15 minutes 59 seconds West 351.23 feet to a point having Coordinates of X = 1,738,332.03 and Y = 395,403.09; thence South 47 degrees 55 minutes 00 seconds West 368.94 feet to a point having Coordinates of X = 1,738,058.21 and Y = 395,155.82; thence North 70 degrees 56 minutes 56 seconds West 1,366.59 feet to a point having Coordinates of X = 1,736,766.47 and Y = 395,601.89, said point being on the eastern boundary of said State Operating Agreement A0386; thence along the eastern and northern boundaries of said State Operating Agreement A0386 the following courses and distances, to wit: North 07 degrees 23 minutes 20 seconds East 1,295.83 feet to a point having Coordinates of X = 1,736,933.12 and Y = 396,886.96, said point being the northeast corner of said State Operating Agreement A0386; and West 3,307.38 feet to the point of beginning, containing approximately 232 Gross acres and **92.80 Net acres**, all as more particularly outlined on a plat on file in the Office of Mineral Resources, Department of Natural Resources. All bearings, distances and coordinates are based on Louisiana Coordinate System of 1927, (North or South Zone), where applicable.

NOTE: The above description of the Tract nominated for lease has been provided and corrected, where required, exclusively by the nomination party. Any mineral lease selected from this Tract and awarded by the Louisiana State Mineral and Energy Board shall be without warranty of any kind, either express, implied, or statutory, including, but not limited to, the implied warranties of merchantability and fitness for a particular purpose. Should the mineral lease awarded by the Louisiana State Mineral and Energy Board be subsequently modified, cancelled or abrogated due to the existence of conflicting leases, operating agreements, private claims or other future obligations or conditions which may affect all or any portion of the leased Tract, it shall not relieve the Lessee of the obligation to pay any bonus due thereon to the Louisiana State Mineral and Energy Board, nor shall the Louisiana State Mineral and Energy Board be obligated to refund any consideration paid by the Lessor prior to such modification, cancellation, or abrogation, including, but not limited to, bonuses, rentals and royalties.

NOTE: The State of Louisiana does hereby reserve, and this lease shall be subject to, the imprescriptible right of surface use in the nature of a servitude in favor of the Department of Natural Resources, including its Offices and Commissions, for the sole purpose of implementing, constructing, servicing and maintaining approved coastal zone management and/or restoration projects. Utilization of any and all rights derived under this lease by the mineral lessee, its agents, successors or assigns, shall not interfere with nor hinder the reasonable surface use by the Department of Natural Resources, its Offices or Commissions, as herein above reserved.

NOTE: This tract is located in an area designated by the Louisiana Legislature or the Wildlife and Fisheries Commission as a Public Oyster Seed Ground, Reservation, or area of Calcasieu or Sabine Lake. Proposed projects occurring in these areas will be evaluated on a case by case basis by Louisiana Department of Wildlife & Fisheries. Modifications to proposed project features including, but not limited to, access routes, well sites, flowlines, and appurtenant structures maybe required by the Louisiana Department of Wildlife and Fisheries. In addition, compensatory mitigation will be required to offset unavoidable habitat impacts.

Applicant: ROBERT A. SCHROEDER, INC.

Bidder	Cash Payment	Price/Acre	Rental	Oil	Gas	Other

**Legend**



20010010

Active\_Leases

1,000 Feet

0



Office of Mineral Resources, Acres: 232 Gross Acres, 92.8 Net Acres,  
Tract Number: 45256

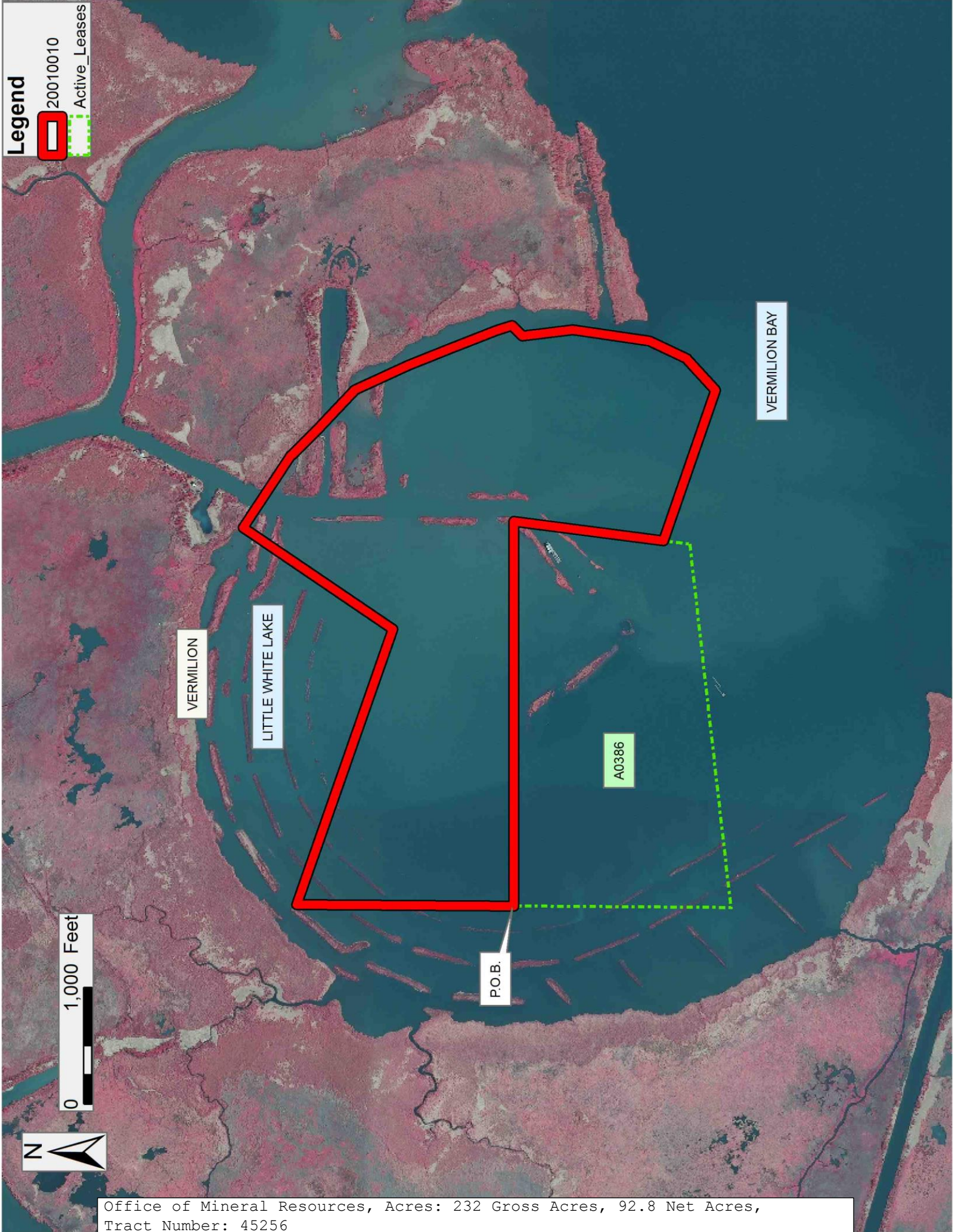
VERMILION

LITTLE WHITE LAKE

A0386

P.O.B.

VERMILION BAY



**TRACT 45257 - Vermilion Parish, Louisiana**

All of the lands now or formerly constituting the beds and bottoms of all water bodies of every nature and description as to which title is vested in the State of Louisiana, together with all islands arising therein and other lands formed by accretion or by reliction, where allowed by law, excepting tax adjudicated lands, and not presently under mineral lease on January 8, 2020, situated in Vermilion Parish, Louisiana, and more particularly described as follows: Beginning at a point having Coordinates of X = 1,736,737.05 and Y = 395,375.00, said point being the southeast corner of State Operating Agreement A0386; thence North 07 degrees 23 minutes 17 seconds East 228.79 feet along the eastern boundary of said State Operating Agreement A0386 to a point having Coordinates of X = 1,736,766.47 and Y = 395,601.89; thence South 70 degrees 56 minutes 56 seconds East 1,366.59 feet to a point having Coordinates of X = 1,738,058.21 and Y = 395,155.82; thence North 47 degrees 55 minutes 00 seconds East 368.94 feet to a point having Coordinates of X = 1,738,332.03 and Y = 395,403.09; thence North 25 degrees 15 minutes 59 seconds East 351.23 feet to a point having Coordinates of X = 1,738,481.94 and Y = 395,720.72; thence North 08 degrees 20 minutes 56 seconds East 667.44 feet to a point having Coordinates of X = 1,738,578.86 and Y = 396,381.08; thence North 06 degrees 55 minutes 36 seconds West 437.74 feet to a point having Coordinates of X = 1,738,526.06 and Y = 396,815.63; thence North 45 degrees 35 minutes 04 seconds East 125.60 feet to a point having Coordinates of X = 1,738,615.78 and Y = 396,903.53; thence North 17 degrees 39 minutes 11 seconds West 132.32 feet to a point having Coordinates of X = 1,738,575.65 and Y = 397,029.62; thence North 21 degrees 18 minutes 59 seconds West 412.78 feet to a point having Coordinates of X = 1,738,425.60 and Y = 397,414.16; thence North 22 degrees 02 minutes 26 seconds West 412.76 feet to a point having Coordinates of X = 1,738,270.71 and Y = 397,796.75; thence North 24 degrees 37 minutes 48 seconds West 502.52 feet to a point having Coordinates of X = 1,738,061.28 and Y = 398,253.55; thence North 46 degrees 31 minutes 42 seconds West 500.00 feet to a point having Coordinates of X = 1,737,698.42 and Y = 398,597.55; thence North 44 degrees 30 minutes 18 seconds West 300.30 feet to a point having Coordinates of X = 1,737,487.92 and Y = 398,811.72; thence North 56 degrees 33 minutes 26 seconds West 729.73 feet to a point having Coordinates of X = 1,736,879.00 and Y = 399,213.88; thence North 1,446.00 feet to a point having Coordinates of X = 1,736,879.00 and Y = 400,659.88; thence East 5,939.03 feet to a point having Coordinates of X = 1,742,818.03 and Y = 400,659.88; thence South 2,624.48 feet to a point having Coordinates of X = 1,742,818.03 and Y = 398,035.40; thence North 87 degrees 59 minutes 00 seconds West 1,886.70 feet to a point having Coordinates of X = 1,740,932.50 and Y = 398,101.79; thence South 06 degrees 36 minutes 59 seconds West 2,640.70 feet to a point having Coordinates of X = 1,740,628.23 and Y = 395,478.68; thence South 72 degrees 37 minutes 00 seconds West 655.10 feet to a point having Coordinates of X = 1,740,003.05 and Y = 395,282.96; thence South 34 degrees 36 minutes 59 seconds West 687.70 feet to a point having Coordinates of X = 1,739,612.38 and Y = 394,717.00; thence South 76 degrees 15 minutes 45 seconds East 87.88 feet to a point having Coordinates of X = 1,739,697.75 and Y = 394,696.13; thence South 79 degrees 59 minutes 57 seconds East 500.00 feet to a point having Coordinates

of X = 1,740,190.15 and Y = 394,609.30; thence South 82 degrees 00 minutes 01 seconds East 505.00 feet to a point having Coordinates of X = 1,740,690.24 and Y = 394,539.02; thence South 83 degrees 29 minutes 59 seconds East 505.01 feet to a point having Coordinates of X = 1,741,191.99 and Y = 394,481.85; thence South 86 degrees 00 minutes 01 seconds East 525.00 feet to a point having Coordinates of X = 1,741,715.71 and Y = 39,444,523.00; thence North 87 degrees 20 minutes 02 seconds East 505.00 feet to a point having Coordinates of X = 1,742,220.17 and Y = 394,468.72; thence North 84 degrees 19 minutes 56 seconds East 499.99 feet to a point having Coordinates of X = 1,742,717.72 and Y = 394,518.10; thence North 81 degrees 00 minutes 00 seconds East 505.00 feet to a point having Coordinates of X = 1,743,216.51 and Y = 394,597.10; thence North 77 degrees 49 minutes 59 seconds East 364.87 feet to a point having Coordinates of X = 1,743,573.18 and Y = 394,674.00; thence South 4,020.18 feet to a point having Coordinates of X = 1,743,573.18 and Y = 390,653.82; thence West 8,715.97 feet to a point having Coordinates of X = 1,734,857.21 and Y = 390,653.83; thence North 51 degrees 51 minutes 26 seconds East 2,390.09 feet to a point having Coordinates of X = 1,736,736.95 and Y = 392,130.01; thence North 00 degrees 00 minutes 06 seconds East 3,244.99 feet to the point of beginning, containing approximately **918 acres**, all as more particularly outlined on a plat on file in the Office of Mineral Resources, Department of Natural Resources. All bearings, distances and coordinates are based on Louisiana Coordinate System of 1927, (North or South Zone), where applicable.

NOTE: The above description of the Tract nominated for lease has been provided and corrected, where required, exclusively by the nomination party. Any mineral lease selected from this Tract and awarded by the Louisiana State Mineral and Energy Board shall be without warranty of any kind, either express, implied, or statutory, including, but not limited to, the implied warranties of merchantability and fitness for a particular purpose. Should the mineral lease awarded by the Louisiana State Mineral and Energy Board be subsequently modified, cancelled or abrogated due to the existence of conflicting leases, operating agreements, private claims or other future obligations or conditions which may affect all or any portion of the leased Tract, it shall not relieve the Lessee of the obligation to pay any bonus due thereon to the Louisiana State Mineral and Energy Board, nor shall the Louisiana State Mineral and Energy Board be obligated to refund any consideration paid by the Lessor prior to such modification, cancellation, or abrogation, including, but not limited to, bonuses, rentals and royalties.

NOTE: The State of Louisiana does hereby reserve, and this lease shall be subject to, the imprescriptible right of surface use in the nature of a servitude in favor of the Department of Natural Resources, including its Offices and Commissions, for the sole purpose of implementing, constructing, servicing and maintaining approved coastal zone management and/or restoration projects. Utilization of any and all rights derived under this lease by the mineral lessee, its agents, successors or assigns, shall not interfere with nor hinder the reasonable surface use by the Department of Natural Resources, its Offices or Commissions, as herein above reserved.

NOTE: This tract is located in an area designated by the Louisiana Legislature or the Wildlife and Fisheries Commission as a Public Oyster Seed Ground, Reservation, or area of Calcasieu or Sabine Lake. Proposed projects occurring in these areas will be evaluated on a case by case basis by Louisiana Department of Wildlife & Fisheries. Modifications to proposed project features including, but not limited to, access routes, well sites, flowlines, and appurtenant structures maybe required by the Louisiana Department of Wildlife and Fisheries. In addition, compensatory mitigation will be required to offset unavoidable habitat impacts.

Applicant: ROBERT A. SCHROEDER, INC.

Bidder	Cash Payment	Price/Acre	Rental	Oil	Gas	Other

**Legend**

20010008



Active\_Leases



0 2,000 Feet

VERMILION

VERMILION RIVER

VERMILION BAY

LITTLE WHITE LAKE

A0386

P.O.B.

T15S - R3E



**TRACT 45258 - Portion of Blocks 52, and 53, Main Pass Area, Revised, Plaquemines Parish, Louisiana**

All of the lands now or formerly constituting the beds and bottoms of all water bodies of every nature and description as to which title is vested in the State of Louisiana, together with all islands arising therein and other lands formed by accretion or by reliction, where allowed by law, excepting tax adjudicated lands, and not presently under mineral lease on January 8, 2020, situated in Plaquemines Parish, Louisiana, and more particularly described as follows: Beginning at a point having Coordinates of X = 2,664,850.00 and Y = 260,511.49, said point being on the line common to Blocks 52 and 53, Main Pass Area, Revised; thence East 8,063.00 feet a point having Coordinates of X = 2,672,913.00 and Y = 260,511.49; thence South approximately 7,438 feet to a point on a northern boundary of State Lease No. 195, as amended, to a point having a Coordinate of X = 2,672,913.00; thence along the boundary of said State Lease No. 195, as amended, the following: Southwesterly approximately 9540 feet and Northwesterly approximately 4451 feet to a point having a Coordinate of X = 2,660,544.85; thence North approximately 7,193 feet to a point having Coordinates of X = 2,660,544.85 and Y = 260,511.49; thence East 4,305.15 feet to the point of beginning, containing approximately **2,500 acres**, all as more particularly outlined on a plat on file in the Office of Mineral Resources, Department of Natural Resources. All bearings, distances and coordinates are based on Louisiana Coordinate System of 1927, (North or South Zone), where applicable.

NOTE: The above description of the Tract nominated for lease has been provided and corrected, where required, exclusively by the nomination party. Any mineral lease selected from this Tract and awarded by the Louisiana State Mineral and Energy Board shall be without warranty of any kind, either express, implied, or statutory, including, but not limited to, the implied warranties of merchantability and fitness for a particular purpose. Should the mineral lease awarded by the Louisiana State Mineral and Energy Board be subsequently modified, cancelled or abrogated due to the existence of conflicting leases, operating agreements, private claims or other future obligations or conditions which may affect all or any portion of the leased Tract, it shall not relieve the Lessee of the obligation to pay any bonus due thereon to the Louisiana State Mineral and Energy Board, nor shall the Louisiana State Mineral and Energy Board be obligated to refund any consideration paid by the Lessor prior to such modification, cancellation, or abrogation, including, but not limited to, bonuses, rentals and royalties.




NOTE: The State of Louisiana does hereby reserve, and this lease shall be subject to, the imprescriptible right of surface use in the nature of a servitude in favor of the Department of Natural Resources, including its Offices and Commissions, for the sole purpose of implementing, constructing, servicing and maintaining approved coastal zone management and/or restoration projects. Utilization of any and all rights derived under this lease by the mineral lessee, its agents, successors or assigns, shall not interfere with nor hinder the reasonable surface use by the Department of Natural Resources, its Offices or Commissions, as herein above reserved.

NOTE: This tract is located in an area designated by the Louisiana Legislature or the Wildlife and Fisheries Commission as a Public Oyster Seed Ground, Reservation, or area of Calcasieu or Sabine Lake. Proposed projects occurring in these areas will be evaluated on a case by case basis by Louisiana Department of Wildlife & Fisheries. Modifications to proposed project features including, but not limited to, access routes, well sites, flowlines, and appurtenant structures maybe required by the Louisiana Department of Wildlife and Fisheries. In addition, compensatory mitigation will be required to offset unavoidable habitat impacts.

Applicant: ROBERT A. SCHROEDER, INC.

Bidder	Cash Payment	Price/Acre	Rental	Oil	Gas	Other

**Legend**

-  20010011
-  Blocks
-  Active\_Leases



0 2,500 Feet

PLAQUEMINES

MAIN PASS AREA, REVISED

GULF OF MEXICO

P.O.B.

MP0052

MP0053

MP0085

SL 195