

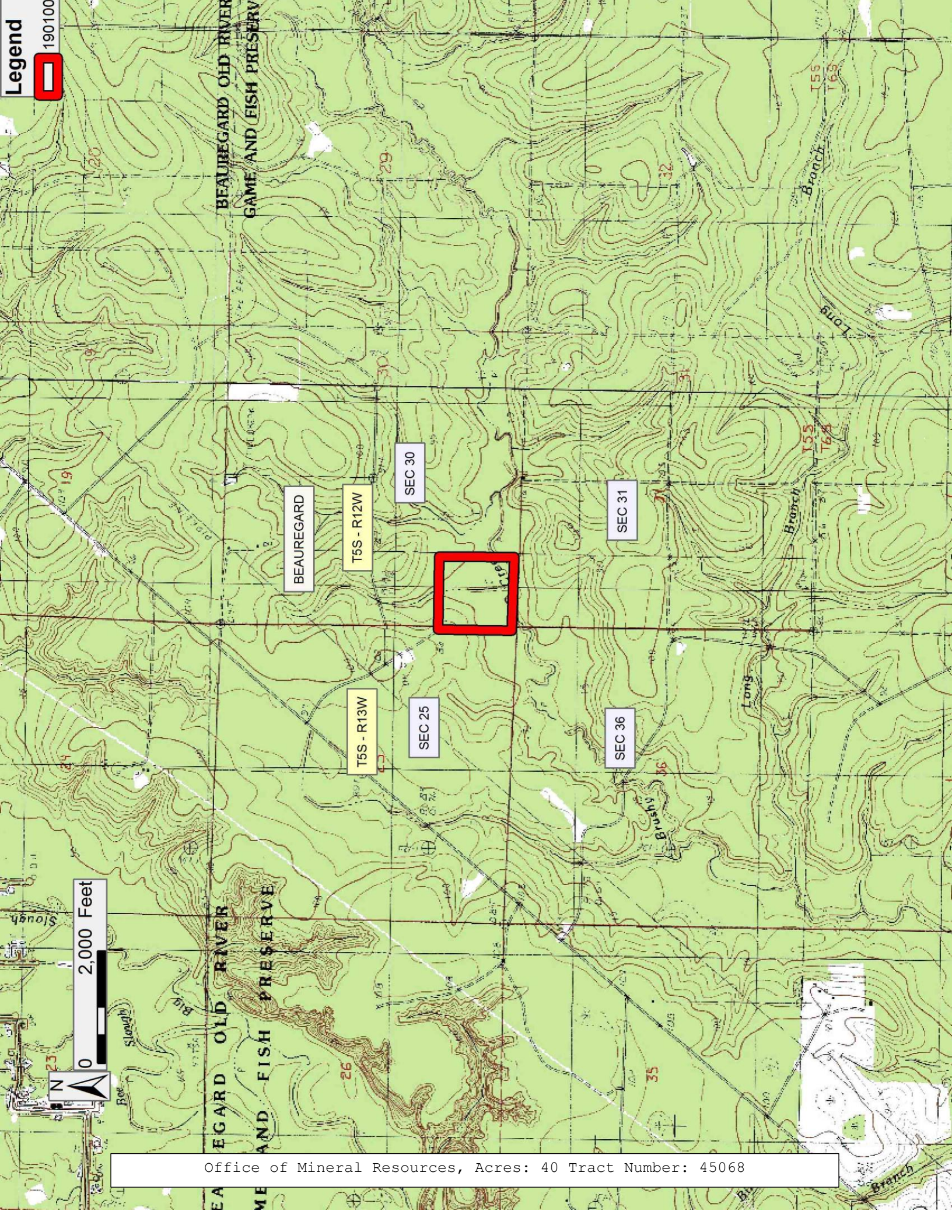
**TRACT 45068 - Beauregard Parish, Louisiana**

All lands, including lands now or formerly constituting the beds and bottoms of all water bodies of every nature and description, owned by and not presently under mineral lease as of January 9, 2019 from the State of Louisiana, situated in Beauregard Parish, Louisiana, and being more fully described as follows: That certain tract or parcel of land described as the Southwest Quarter of the Southwest Quarter (SW/4 SW/4) of Section 30, Township 5 South, Range 12 West, Beauregard Parish, Louisiana, containing approximately **40 acres**, all as more particularly outlined on a plat on file in the Office of Mineral Resources, Department of Natural Resources. All bearings, distances and coordinates are based on Louisiana Coordinate System of 1927, (North or South Zone), where applicable.

NOTE: The above description of the Tract nominated for lease has been provided and corrected, where required, exclusively by the nomination party. Any mineral lease selected from this Tract and awarded by the Louisiana State Mineral and Energy Board shall be without warranty of any kind, either express, implied, or statutory, including, but not limited to, the implied warranties of merchantability and fitness for a particular purpose. Should the mineral lease awarded by the Louisiana State Mineral and Energy Board be subsequently modified, cancelled or abrogated due to the existence of conflicting leases, operating agreements, private claims or other future obligations or conditions which may affect all or any portion of the leased Tract, it shall not relieve the Lessee of the obligation to pay any bonus due thereon to the Louisiana State Mineral and Energy Board, nor shall the Louisiana State Mineral and Energy Board be obligated to refund any consideration paid by the Lessor prior to such modification, cancellation, or abrogation, including, but not limited to, bonuses, rentals and royalties.

Applicant: AUDUBON ENERGY, LLC

Bidder	Cash Payment	Price/Acre	Rental	Oil	Gas	Other



Office of Mineral Resources, Acres: 40 Tract Number: 45068

**TRACT 45069 - Iberia Parish, Louisiana**

All of the lands now or formerly constituting the beds and bottoms of all water bodies of every nature and description as to which title is vested in the State of Louisiana, together with all islands arising therein and other lands formed by accretion or by reliction, where allowed by law, excepting tax adjudicated lands, and not presently under mineral lease on January 9, 2019, situated in Iberia Parish, Louisiana, and more particularly described as follows: Beginning at a point having Coordinates of X = 1,856,949.21 and Y = 353,260.24; thence East 9,100.00 feet to a point having Coordinates of X = 1,866,049.21 and Y = 353,260.24; thence South 8,200.00 feet to a point having Coordinates of X = 1,866,049.21 and Y = 345,060.24; thence West 9,100.00 feet to a point having Coordinates of X = 1,856,949.21 and Y = 345,060.24; thence North 8,200.00 feet to the point of beginning, containing approximately **1,713.04 acres**, all as more particularly outlined on a plat on file in the Office of Mineral Resources, Department of Natural Resources. All bearings, distances and coordinates are based on Louisiana Coordinate System of 1927, (North or South Zone), where applicable.

NOTE: The above description of the Tract nominated for lease has been provided and corrected, where required, exclusively by the nomination party. Any mineral lease selected from this Tract and awarded by the Louisiana State Mineral and Energy Board shall be without warranty of any kind, either express, implied, or statutory, including, but not limited to, the implied warranties of merchantability and fitness for a particular purpose. Should the mineral lease awarded by the Louisiana State Mineral and Energy Board be subsequently modified, cancelled or abrogated due to the existence of conflicting leases, operating agreements, private claims or other future obligations or conditions which may affect all or any portion of the leased Tract, it shall not relieve the Lessee of the obligation to pay any bonus due thereon to the Louisiana State Mineral and Energy Board, nor shall the Louisiana State Mineral and Energy Board be obligated to refund any consideration paid by the Lessor prior to such modification, cancellation, or abrogation, including, but not limited to, bonuses, rentals and royalties.

NOTE: The acreage contained herein, being a portion of State Lease 335, 340 or 341, was subject to the litigation between Texaco, Inc. and the State of Louisiana which resulted in the Global Settlement Agreement compromise whereby this acreage was reassigned through various mesne conveyances to the successors of William T. Burton, the original lessee of said leases from the State, (hereinafter otherwise referred to as the "ORRO's) and approved by the State Mineral and Energy Board, becoming effective April 25, 1994. Under separate agreement by and between the State and the ORRO's, certain obligations were to be met within a specified time frame or the ORRO's became obligated to release the reassigned acreage back to the State. The obligations were not met within the specified time frame and the State began securing the releases for the acreage contained herein. Due to the extremely large number of ORRO's, their nationwide and worldwide dispersal, the unreliability of available contact information and/or a present inability to obtain full, requisite cooperation, the

State has, as yet, not secured releases from certain ORRO's representing approximately a .0258336 interest in this acreage. Accordingly, although the State is diligently pursuing the requisite releases affecting this acreage (the furnishing of which the ORRO's representing the stated decimal interest are obligated), nevertheless, a party obtaining a mineral lease from the State of Louisiana on the acreage contained herein shall do so with full knowledge that a complete release of all specific ORRO interest in this acreage has not as yet been secured and shall assume a business risk commensurate with the unsecured interest release.

NOTE: The State of Louisiana does hereby reserve, and this lease shall be subject to, the imprescriptible right of surface use in the nature of a servitude in favor of the Department of Natural Resources, including its Offices and Commissions, for the sole purpose of implementing, constructing, servicing and maintaining approved coastal zone management and/or restoration projects. Utilization of any and all rights derived under this lease by the mineral lessee, its agents, successors or assigns, shall not interfere with nor hinder the reasonable surface use by the Department of Natural Resources, its Offices or Commissions, as herein above reserved.

NOTE: This tract is located in an area designated by the Louisiana Legislature or the Wildlife and Fisheries Commission as a Public Oyster Seed Ground, Reservation, or area of Calcasieu or Sabine Lake. Proposed projects occurring in these areas will be evaluated on a case by case basis by Louisiana Department of Wildlife & Fisheries. Modifications to proposed project features including, but not limited to, access routes, well sites, flowlines, and appurtenant structures maybe required by the Louisiana Department of Wildlife and Fisheries. In addition, compensatory mitigation will be required to offset unavoidable habitat impacts.

Applicant: THEOPHILUS OIL, GAS & LAND SERVICES, LLC

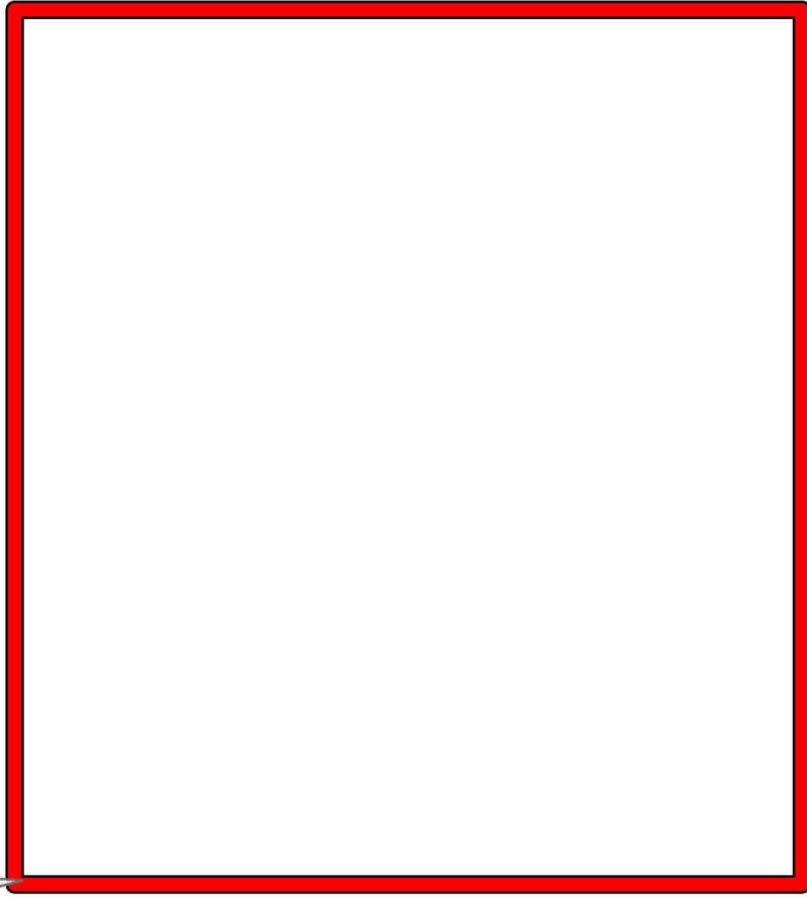
Bidder	Cash Payment	Price/Acre	Rental	Oil	Gas	Other



IBERIA

VERMILION BAY

P.O.B.



**TRACT 45070 - Iberia Parish, Louisiana**

All of the lands now or formerly constituting the beds and bottoms of all water bodies of every nature and description as to which title is vested in the State of Louisiana, together with all islands arising therein and other lands formed by accretion or by reliction, where allowed by law, excepting tax adjudicated lands, and not presently under mineral lease on January 9, 2019, situated in Iberia Parish, Louisiana, and more particularly described as follows: Beginning at a point having Coordinates of X = 1,866,049.21 and Y = 353,260.24; thence East 9,200.00 feet to a point having Coordinates of X = 1,875,249.21 and Y = 353,260.24; thence South 8,200.00 feet to a point having Coordinates of X = 1,875,249.21 and Y = 345,060.24; thence West 9,200.00 feet to a point having Coordinates of X = 1,866,049.21 and Y = 345,060.24; thence North 8,200.00 feet to the point of beginning, containing approximately **1,731.86 acres**, all as more particularly outlined on a plat on file in the Office of Mineral Resources, Department of Natural Resources. All bearings, distances and coordinates are based on Louisiana Coordinate System of 1927, (North or South Zone), where applicable.

NOTE: The above description of the Tract nominated for lease has been provided and corrected, where required, exclusively by the nomination party. Any mineral lease selected from this Tract and awarded by the Louisiana State Mineral and Energy Board shall be without warranty of any kind, either express, implied, or statutory, including, but not limited to, the implied warranties of merchantability and fitness for a particular purpose. Should the mineral lease awarded by the Louisiana State Mineral and Energy Board be subsequently modified, cancelled or abrogated due to the existence of conflicting leases, operating agreements, private claims or other future obligations or conditions which may affect all or any portion of the leased Tract, it shall not relieve the Lessee of the obligation to pay any bonus due thereon to the Louisiana State Mineral and Energy Board, nor shall the Louisiana State Mineral and Energy Board be obligated to refund any consideration paid by the Lessor prior to such modification, cancellation, or abrogation, including, but not limited to, bonuses, rentals and royalties.

NOTE: The acreage contained herein, being a portion of State Lease 335, 340 or 341, was subject to the litigation between Texaco, Inc. and the State of Louisiana which resulted in the Global Settlement Agreement compromise whereby this acreage was reassigned through various mesne conveyances to the successors of William T. Burton, the original lessee of said leases from the State, (hereinafter otherwise referred to as the "ORRO's) and approved by the State Mineral and Energy Board, becoming effective April 25, 1994. Under separate agreement by and between the State and the ORRO's, certain obligations were to be met within a specified time frame or the ORRO's became obligated to release the reassigned acreage back to the State. The obligations were not met within the specified time frame and the State began securing the releases for the acreage contained herein. Due to the extremely large number of ORRO's, their nationwide and worldwide dispersal, the unreliability of available contact information and/or a present inability to obtain full, requisite cooperation, the

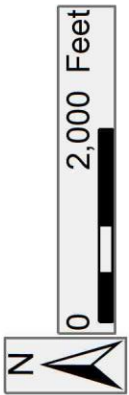
State has, as yet, not secured releases from certain ORRO's representing approximately a .0258336 interest in this acreage. Accordingly, although the State is diligently pursuing the requisite releases affecting this acreage (the furnishing of which the ORRO's representing the stated decimal interest are obligated), nevertheless, a party obtaining a mineral lease from the State of Louisiana on the acreage contained herein shall do so with full knowledge that a complete release of all specific ORRO interest in this acreage has not as yet been secured and shall assume a business risk commensurate with the unsecured interest release.

NOTE: The State of Louisiana does hereby reserve, and this lease shall be subject to, the imprescriptible right of surface use in the nature of a servitude in favor of the Department of Natural Resources, including its Offices and Commissions, for the sole purpose of implementing, constructing, servicing and maintaining approved coastal zone management and/or restoration projects. Utilization of any and all rights derived under this lease by the mineral lessee, its agents, successors or assigns, shall not interfere with nor hinder the reasonable surface use by the Department of Natural Resources, its Offices or Commissions, as herein above reserved.

NOTE: This tract is located in an area designated by the Louisiana Legislature or the Wildlife and Fisheries Commission as a Public Oyster Seed Ground, Reservation, or area of Calcasieu or Sabine Lake. Proposed projects occurring in these areas will be evaluated on a case by case basis by Louisiana Department of Wildlife & Fisheries. Modifications to proposed project features including, but not limited to, access routes, well sites, flowlines, and appurtenant structures maybe required by the Louisiana Department of Wildlife and Fisheries. In addition, compensatory mitigation will be required to offset unavoidable habitat impacts.

Applicant: THEOPHILUS OIL, GAS & LAND SERVICES, LLC

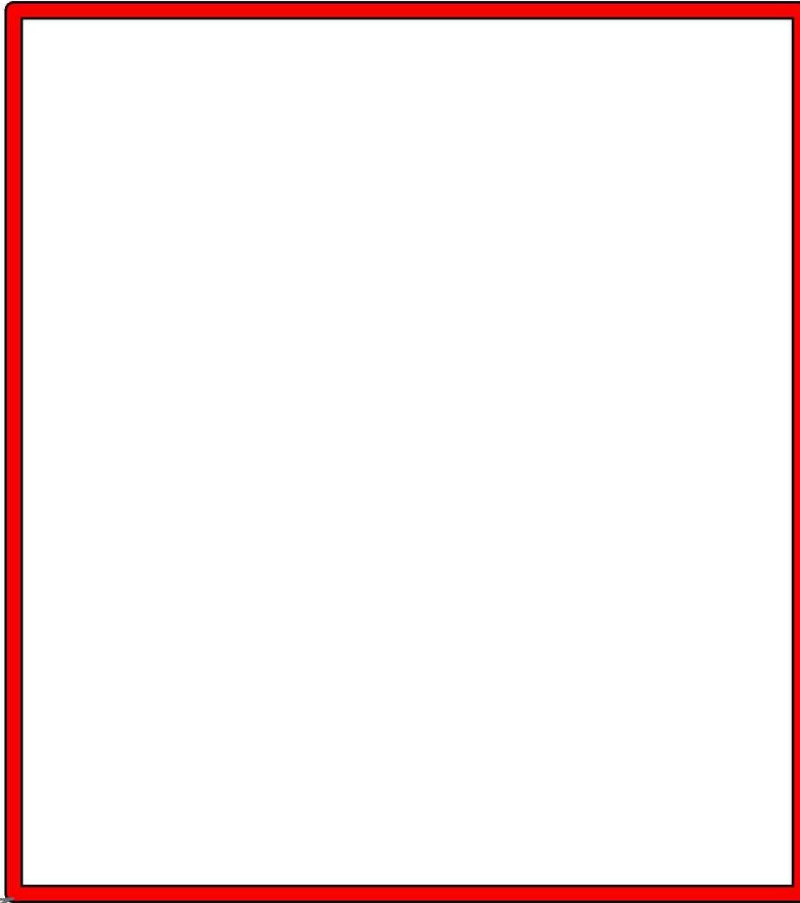
Bidder	Cash Payment	Price/Acre	Rental	Oil	Gas	Other



IBERIA

VERMILION BAY

P.O.B.





**TRACT 45071 - Iberia and St. Mary Parishes, Louisiana**

All of the lands now or formerly constituting the beds and bottoms of all water bodies of every nature and description as to which title is vested in the State of Louisiana, together with all islands arising therein and other lands formed by accretion or by reliction, where allowed by law, excepting tax adjudicated lands, and not presently under mineral lease on January 9, 2019, situated in Iberia and St. Mary Parishes, Louisiana, and more particularly described as follows: Beginning at a point having Coordinates of X = 1,875,249.21 and Y = 353,260.24; thence East 9,200.00 feet to a point having Coordinates of X = 1,884,449.21 and Y = 353,260.24; thence South 8,200.00 feet to a point having Coordinates of X = 1,884,449.21 and Y = 345,060.24; thence West 9,200.00 feet to a point having Coordinates of X = 1,875,249.21 and Y = 345,060.24; thence North 8,200.00 feet to the point of beginning, containing approximately **1,731.86 acres**, all as more particularly outlined on a plat on file in the Office of Mineral Resources, Department of Natural Resources. All bearings, distances and coordinates are based on Louisiana Coordinate System of 1927, (North or South Zone), where applicable.

NOTE: The above description of the Tract nominated for lease has been provided and corrected, where required, exclusively by the nomination party. Any mineral lease selected from this Tract and awarded by the Louisiana State Mineral and Energy Board shall be without warranty of any kind, either express, implied, or statutory, including, but not limited to, the implied warranties of merchantability and fitness for a particular purpose. Should the mineral lease awarded by the Louisiana State Mineral and Energy Board be subsequently modified, cancelled or abrogated due to the existence of conflicting leases, operating agreements, private claims or other future obligations or conditions which may affect all or any portion of the leased Tract, it shall not relieve the Lessee of the obligation to pay any bonus due thereon to the Louisiana State Mineral and Energy Board, nor shall the Louisiana State Mineral and Energy Board be obligated to refund any consideration paid by the Lessor prior to such modification, cancellation, or abrogation, including, but not limited to, bonuses, rentals and royalties.

NOTE: The State of Louisiana does hereby reserve, and this lease shall be subject to, the imprescriptible right of surface use in the nature of a servitude in favor of the Department of Natural Resources, including its Offices and Commissions, for the sole purpose of implementing, constructing, servicing and maintaining approved coastal zone management and/or restoration projects. Utilization of any and all rights derived under this lease by the mineral lessee, its agents, successors or assigns, shall not interfere with nor hinder the reasonable surface use by the Department of Natural Resources, its Offices or Commissions, as herein above reserved.

NOTE: This tract is located in an area designated by the Louisiana Legislature or the Wildlife and Fisheries Commission as a Public Oyster Seed Ground, Reservation, or area of Calcasieu or Sabine Lake. Proposed projects occurring in these areas will be evaluated on a case by case basis by Louisiana Department of Wildlife & Fisheries. Modifications to proposed

project features including, but not limited to, access routes, well sites, flowlines, and appurtenant structures maybe required by the Louisiana Department of Wildlife and Fisheries. In addition, compensatory mitigation will be required to offset unavoidable habitat impacts.

Applicant: THEOPHILUS OIL, GAS & LAND SERVICES, LLC

Bidder	Cash Payment	Price/Acre	Rental	Oil	Gas	Other

Legend  
190100  
County



ST MARY

IBERIA

VERMILION BAY

P.O.B.



Office of Mineral Resources, Acres: 1731.86 Tract Number: 45071

**TRACT 45072 - Iberia Parish, Louisiana**

All of the lands now or formerly constituting the beds and bottoms of all water bodies of every nature and description as to which title is vested in the State of Louisiana, together with all islands arising therein and other lands formed by accretion or by reliction, where allowed by law, excepting tax adjudicated lands, and not presently under mineral lease on January 9, 2019, situated in Iberia Parish, Louisiana, and more particularly described as follows: Beginning at a point having Coordinates of X = 1,856,949.21 and Y = 345,060.24; thence East 9,100.00 feet to a point having Coordinates of X = 1,866,049.21 and Y = 345,060.24; thence South 8,179.14 feet to a point having Coordinates of X = 1,866,049.21 and Y = 336,881.10; thence West 9,100.00 feet to a point having Coordinates of X = 1,856,949.21 and Y = 336,881.10; thence North 8,179.14 feet to the point of beginning, **LESS AND EXCEPT** all that portion, if any, of Marsh Island Wildlife Refuge, that may lie within the above described tract, containing approximately **1,708 acres**, all as more particularly outlined on a plat on file in the Office of Mineral Resources, Department of Natural Resources. All bearings, distances and coordinates are based on Louisiana Coordinate System of 1927, (North or South Zone), where applicable.

NOTE: The above description of the Tract nominated for lease has been provided and corrected, where required, exclusively by the nomination party. Any mineral lease selected from this Tract and awarded by the Louisiana State Mineral and Energy Board shall be without warranty of any kind, either express, implied, or statutory, including, but not limited to, the implied warranties of merchantability and fitness for a particular purpose. Should the mineral lease awarded by the Louisiana State Mineral and Energy Board be subsequently modified, cancelled or abrogated due to the existence of conflicting leases, operating agreements, private claims or other future obligations or conditions which may affect all or any portion of the leased Tract, it shall not relieve the Lessee of the obligation to pay any bonus due thereon to the Louisiana State Mineral and Energy Board, nor shall the Louisiana State Mineral and Energy Board be obligated to refund any consideration paid by the Lessor prior to such modification, cancellation, or abrogation, including, but not limited to, bonuses, rentals and royalties.

NOTE: The acreage contained herein, being a portion of State Lease 335, 340 or 341, was subject to the litigation between Texaco, Inc. and the State of Louisiana which resulted in the Global Settlement Agreement compromise whereby this acreage was reassigned through various mesne conveyances to the successors of William T. Burton, the original lessee of said leases from the State, (hereinafter otherwise referred to as the "ORRO's) and approved by the State Mineral and Energy Board, becoming effective April 25, 1994. Under separate agreement by and between the State and the ORRO's, certain obligations were to be met within a specified time frame or the ORRO's became obligated to release the reassigned acreage back to the State. The obligations were not met within the specified time frame and the State began securing the releases for the acreage contained herein. Due to the extremely large number of ORRO's, their nationwide and

worldwide dispersal, the unreliability of available contact information and/or a present inability to obtain full, requisite cooperation, the State has, as yet, not secured releases from certain ORRO's representing approximately a .0258336 interest in this acreage. Accordingly, although the State is diligently pursuing the requisite releases affecting this acreage (the furnishing of which the ORRO's representing the stated decimal interest are obligated), nevertheless, a party obtaining a mineral lease from the State of Louisiana on the acreage contained herein shall do so with full knowledge that a complete release of all specific ORRO interest in this acreage has not as yet been secured and shall assume a business risk commensurate with the unsecured interest release.

NOTE: The State of Louisiana does hereby reserve, and this lease shall be subject to, the imprescriptible right of surface use in the nature of a servitude in favor of the Department of Natural Resources, including its Offices and Commissions, for the sole purpose of implementing, constructing, servicing and maintaining approved coastal zone management and/or restoration projects. Utilization of any and all rights derived under this lease by the mineral lessee, its agents, successors or assigns, shall not interfere with nor hinder the reasonable surface use by the Department of Natural Resources, its Offices or Commissions, as herein above reserved.

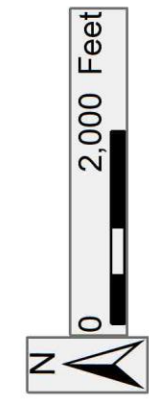
NOTE: This tract is located in an area designated by the Louisiana Legislature or the Wildlife and Fisheries Commission as a Public Oyster Seed Ground, Reservation, or area of Calcasieu or Sabine Lake. Proposed projects occurring in these areas will be evaluated on a case by case basis by Louisiana Department of Wildlife & Fisheries. Modifications to proposed project features including, but not limited to, access routes, well sites, flowlines, and appurtenant structures maybe required by the Louisiana Department of Wildlife and Fisheries. In addition, compensatory mitigation will be required to offset unavoidable habitat impacts.

NOTE: All or a portion of this Tract lies within one nautical mile of the boundary of the Russell Sage or Marsh Island Wildlife Refuge and Game Preserve. Any activities connected with this lease conducted within this Tract which may pose potential environmental impacts to the said Wildlife Refuge and Game Preserve should be coordinated with the Louisiana Department of Wildlife and Fisheries.

Applicant: THEOPHILUS OIL, GAS & LAND SERVICES, LLC

Bidder	Cash Payment	Price/Acre	Rental	Oil	Gas	Other

**Legend**  
190100  
Wildlife  
Blocks



IBERIA

VERMILION BAY

P.O.B.

MARSH ISLAND WILDLIFE REFUGE

Office of Mineral Resources, Acres: 1708 Tract Number: 45072

**TRACT 45073 - Iberia Parish, Louisiana**

All of the lands now or formerly constituting the beds and bottoms of all water bodies of every nature and description as to which title is vested in the State of Louisiana, together with all islands arising therein and other lands formed by accretion or by reliction, where allowed by law, excepting tax adjudicated lands, and not presently under mineral lease on January 9, 2019, situated in Iberia Parish, Louisiana, and more particularly described as follows: Beginning at a point having Coordinates of X = 1,866,049.21 and Y = 345,060.24; thence East 9,200.00 feet to a point having Coordinates of X = 1,875,249.21 and Y = 345,060.24; thence South 8,205.81 feet to a point on the Northern boundary of State Lease No. 1706, as amended, having Coordinates of X = 1,875,249.21 and Y = 336,854.43; thence North 89 degrees 45 minutes 51 seconds West 6,481.62 feet along said Northern boundary of said State Lease No. 1706 to its Northwest corner, having Coordinates of X = 1,868,767.65 and Y = 336,881.10; thence West 2,718.44 feet to a point having Coordinates of X = 1,866,049.21 and Y = 336,881.10; thence North 8,179.14 feet to the point of beginning, containing approximately **1,729.44 acres**, all as more particularly outlined on a plat on file in the Office of Mineral Resources, Department of Natural Resources. All bearings, distances and coordinates are based on Louisiana Coordinate System of 1927, (North or South Zone), where applicable.

NOTE: The above description of the Tract nominated for lease has been provided and corrected, where required, exclusively by the nomination party. Any mineral lease selected from this Tract and awarded by the Louisiana State Mineral and Energy Board shall be without warranty of any kind, either express, implied, or statutory, including, but not limited to, the implied warranties of merchantability and fitness for a particular purpose. Should the mineral lease awarded by the Louisiana State Mineral and Energy Board be subsequently modified, cancelled or abrogated due to the existence of conflicting leases, operating agreements, private claims or other future obligations or conditions which may affect all or any portion of the leased Tract, it shall not relieve the Lessee of the obligation to pay any bonus due thereon to the Louisiana State Mineral and Energy Board, nor shall the Louisiana State Mineral and Energy Board be obligated to refund any consideration paid by the Lessor prior to such modification, cancellation, or abrogation, including, but not limited to, bonuses, rentals and royalties.

NOTE: The acreage contained herein, being a portion of State Lease 335, 340 or 341, was subject to the litigation between Texaco, Inc. and the State of Louisiana which resulted in the Global Settlement Agreement compromise whereby this acreage was reassigned through various mesne conveyances to the successors of William T. Burton, the original lessee of said leases from the State, (hereinafter otherwise referred to as the "ORRO's) and approved by the State Mineral and Energy Board, becoming effective April 25, 1994. Under separate agreement by and between the State and the ORRO's, certain obligations were to be met within a specified time frame or the ORRO's became obligated to release the reassigned acreage back to the State. The obligations were not met within the specified time



frame and the State began securing the releases for the acreage contained herein. Due to the extremely large number of ORRO's, their nationwide and worldwide dispersal, the unreliability of available contact information and/or a present inability to obtain full, requisite cooperation, the State has, as yet, not secured releases from certain ORRO's representing approximately a .0258336 interest in this acreage. Accordingly, although the State is diligently pursuing the requisite releases affecting this acreage (the furnishing of which the ORRO's representing the stated decimal interest are obligated), nevertheless, a party obtaining a mineral lease from the State of Louisiana on the acreage contained herein shall do so with full knowledge that a complete release of all specific ORRO interest in this acreage has not as yet been secured and shall assume a business risk commensurate with the unsecured interest release.

NOTE: The State of Louisiana does hereby reserve, and this lease shall be subject to, the imprescriptible right of surface use in the nature of a servitude in favor of the Department of Natural Resources, including its Offices and Commissions, for the sole purpose of implementing, constructing, servicing and maintaining approved coastal zone management and/or restoration projects. Utilization of any and all rights derived under this lease by the mineral lessee, its agents, successors or assigns, shall not interfere with nor hinder the reasonable surface use by the Department of Natural Resources, its Offices or Commissions, as herein above reserved.

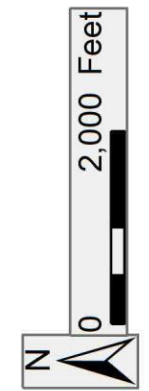
NOTE: This tract is located in an area designated by the Louisiana Legislature or the Wildlife and Fisheries Commission as a Public Oyster Seed Ground, Reservation, or area of Calcasieu or Sabine Lake. Proposed projects occurring in these areas will be evaluated on a case by case basis by Louisiana Department of Wildlife & Fisheries. Modifications to proposed project features including, but not limited to, access routes, well sites, flowlines, and appurtenant structures maybe required by the Louisiana Department of Wildlife and Fisheries. In addition, compensatory mitigation will be required to offset unavoidable habitat impacts.

NOTE: All or a portion of this Tract lies within one nautical mile of the boundary of the Russell Sage or Marsh Island Wildlife Refuge and Game Preserve. Any activities connected with this lease conducted within this Tract which may pose potential environmental impacts to the said Wildlife Refuge and Game Preserve should be coordinated with the Louisiana Department of Wildlife and Fisheries.

Applicant: THEOPHILUS OIL, GAS & LAND SERVICES, LLC

Bidder	Cash Payment	Price/Acre	Rental	Oil	Gas	Other

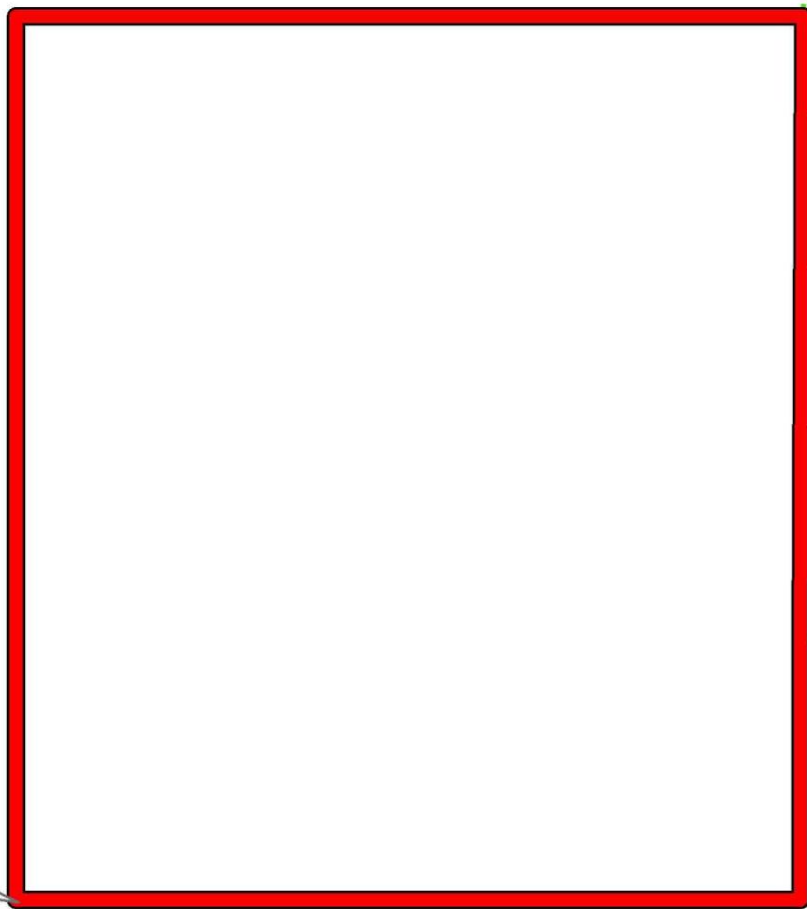
Legend  
19010008  
Active\_Leas



IBERIA

VERMILION BAY

P.O.B.



SL 1706



**TRACT 45074 - Iberia Parish, Louisiana**

All of the lands now or formerly constituting the beds and bottoms of all water bodies of every nature and description as to which title is vested in the State of Louisiana, together with all islands arising therein and other lands formed by accretion or by reliction, where allowed by law, excepting tax adjudicated lands, and not presently under mineral lease on January 9, 2019, situated in Iberia Parish, Louisiana, and more particularly described as follows: Beginning at a point having Coordinates of X = 1,875,249.21 and Y = 345,060.24; thence East 9,200.00 feet to a point having Coordinates of X = 1,884,449.21 and Y = 345,060.24; thence South 6,300.00 feet to the Northeast corner of State Lease No. 19139, having Coordinates of X = 1,884,449.21 and Y = 338,760.24; thence along the boundary of said State Lease No. 19139, the following courses and distances: West 2,037.23 feet to a point having Coordinates of X = 1,882,411.98 and Y = 338,760.24, North 89 degrees 45 minutes 52 seconds West 3,866.00 feet to a point having Coordinates of X = 1,878,546.01 and Y = 338,776.13, and South 00 degrees 13 minutes 52 seconds West 1,935.25 feet to the Northernmost Northeast corner of State Lease No. 1706, as amended, having Coordinates of X = 1,878,538.20 and Y = 336,840.90; thence North 89 degrees 45 minutes 52 seconds West 3,289.02 feet along the boundary of said State Lease No. 1706, to a point having Coordinates of X = 1,875,249.21 and Y = 336,854.43; thence North 8,205.81 feet to the point of beginning, containing approximately **1,474.45 acres**, all as more particularly outlined on a plat on file in the Office of Mineral Resources, Department of Natural Resources. All bearings, distances and coordinates are based on Louisiana Coordinate System of 1927, (North or South Zone), where applicable.

NOTE: The above description of the Tract nominated for lease has been provided and corrected, where required, exclusively by the nomination party. Any mineral lease selected from this Tract and awarded by the Louisiana State Mineral and Energy Board shall be without warranty of any kind, either express, implied, or statutory, including, but not limited to, the implied warranties of merchantability and fitness for a particular purpose. Should the mineral lease awarded by the Louisiana State Mineral and Energy Board be subsequently modified, cancelled or abrogated due to the existence of conflicting leases, operating agreements, private claims or other future obligations or conditions which may affect all or any portion of the leased Tract, it shall not relieve the Lessee of the obligation to pay any bonus due thereon to the Louisiana State Mineral and Energy Board, nor shall the Louisiana State Mineral and Energy Board be obligated to refund any consideration paid by the Lessor prior to such modification, cancellation, or abrogation, including, but not limited to, bonuses, rentals and royalties.

NOTE: The State of Louisiana does hereby reserve, and this lease shall be subject to, the imprescriptible right of surface use in the nature of a servitude in favor of the Department of Natural Resources, including its Offices and Commissions, for the sole purpose of implementing, constructing, servicing and maintaining approved coastal zone management and/or restoration projects. Utilization of any and all rights derived under this

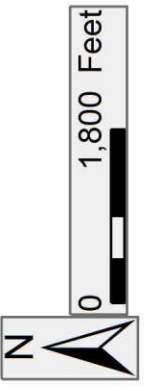
lease by the mineral lessee, its agents, successors or assigns, shall not interfere with nor hinder the reasonable surface use by the Department of Natural Resources, its Offices or Commissions, as herein above reserved.

NOTE: This tract is located in an area designated by the Louisiana Legislature or the Wildlife and Fisheries Commission as a Public Oyster Seed Ground, Reservation, or area of Calcasieu or Sabine Lake. Proposed projects occurring in these areas will be evaluated on a case by case basis by Louisiana Department of Wildlife & Fisheries. Modifications to proposed project features including, but not limited to, access routes, well sites, flowlines, and appurtenant structures maybe required by the Louisiana Department of Wildlife and Fisheries. In addition, compensatory mitigation will be required to offset unavoidable habitat impacts.

NOTE: All or a portion of this Tract lies within one nautical mile of the boundary of the Russell Sage or Marsh Island Wildlife Refuge and Game Preserve. Any activities connected with this lease conducted within this Tract which may pose potential environmental impacts to the said Wildlife Refuge and Game Preserve should be coordinated with the Louisiana Department of Wildlife and Fisheries.

Applicant: THEOPHILUS OIL, GAS & LAND SERVICES, LLC

Bidder	Cash Payment	Price/Acre	Rental	Oil	Gas	Other



IBERIA

VERMILION BAY

P.O.B.

SL 19139

SL 1706

**TRACT 45075 - Plaquemines Parish, Louisiana**

All of the lands now or formerly constituting the beds and bottoms of all water bodies of every nature and description as to which title is vested in the State of Louisiana, together with all islands arising therein and other lands formed by accretion or by reliction, where allowed by law, excepting tax adjudicated lands, and not presently under mineral lease on January 9, 2019, situated in Plaquemines Parish, Louisiana, and more particularly described as follows: Beginning at a point having Coordinates of X = 2,504,630.00 and Y = 265,950.00; thence South 7,240.00 feet to a point having Coordinates of X = 2,504,630.00 and Y = 258,710.00; thence West 1,862.97 feet to a point on the East line of Tract 3 of State Lease No. 1464, as amended, having Coordinates of X = 2,502,767.03 and Y = 258,710.00; thence on the boundary of said State Lease No. 1464 the following courses: North 366.38 feet having Coordinates of X = 2,502,767.03 and Y = 259,076.38, North 65 degrees 05 minutes 41 seconds West 1,497.63 feet having Coordinates of X = 2,501,408.67 and Y = 259,707.06, and North 88 degrees 48 minutes 27 seconds West 3,200.00 feet to its Northwest corner having Coordinates of X = 2,498,209.36 and Y = 259,773.66; thence West 233.17 feet to a point having Coordinates of X = 2,497,976.19 and Y = 259,773.66; thence North 00 degrees 56 minutes 02 seconds West 977.10 feet to a point on the boundary of State Lease No. 17266 and the CM 288 RE SUA Unit Order No. 149 PPP 2 having Coordinates of X = 2,497,960.26 and Y = 260,750.63; thence along the outer perimeter of said CM 288 RE SUA Unit Order No. 149 PPP 2 the following: North 47 degrees 08 minutes 11 seconds East 29.23 feet to a point having Coordinates of X = 2,497,981.69 and Y = 260,770.51, North 38 degrees 20 minutes 00 seconds East 27.41 feet to a point having Coordinates of X = 2,497,998.69 and Y = 260,792.01, North 29 degrees 54 minutes 54 seconds East 50.13 feet to a point having Coordinates of X = 2,498,023.69 and Y = 260,835.46, North 21 degrees 11 minutes 17 seconds East 45.10 feet to a point having Coordinates of X = 2,498,039.99 and Y = 260,877.51, North 11 degrees 29 minutes 12 seconds East 57.25 feet to a point having Coordinates of X = 2,498,051.39 and Y = 260,933.61, North 06 degrees 46 minutes 02 seconds East 40.73 feet to a point having Coordinates of X = 2,498,056.19 and Y = 260,974.06, North 02 degrees 39 minutes 58 seconds East 43.00 feet to a point having Coordinates of X = 2,498,058.19 and Y = 261,017.01, North 02 degrees 13 minutes 33 seconds West 28.32 feet to a point having Coordinates of X = 2,498,057.09 and Y = 261,045.31, North 08 degrees 07 minutes 48 seconds West 26.52 feet to a point having Coordinates of X = 2,498,053.34 and Y = 261,071.56, South 80 degrees 15 minutes 29 seconds West 79.19 feet to a point having Coordinates of X = 2,497,975.29 and Y = 261,058.16, South 77 degrees 15 minutes 43 seconds West 20.47 feet to a point having Coordinates of X = 2,497,955.33 and Y = 261,053.65; thence North 00 degrees 56 minutes 02 seconds West 2,820.39 feet to a point on the South line of Tract 2 of said State Lease No. 1464, as amended, having Coordinates of X = 2,497,909.36 and Y = 263,873.66; thence on the boundary of said Tract 2 of said State Lease No. 1464 the following courses: North 87 degrees 34 minutes 56 seconds East 3,746.82 feet to a point having Coordinates of X = 2,501,652.84 and Y = 264,031.72; North 00 degrees 54 minutes 20 seconds West 1,918.52 feet to a point having Coordinates of X = 2,501,622.52 and Y = 265,950.00; thence East

3,007.48 feet to the point of beginning, **LESS AND EXCEPT** any portion of the Agreement between Cockrell et al and the State of Louisiana, dated May 16, 1938, recorded in Book 88, Page 189, in Plaquemines Parish that may fall within the boundaries of above described tract. Tract contains approximately **181 acres**, all as more particularly outlined on a plat on file in the Office of Mineral Resources, Department of Natural Resources. All bearings, distances and coordinates are based on Louisiana Coordinate System of 1927, (North or South Zone), where applicable.

NOTE: The above description of the Tract nominated for lease has been provided and corrected, where required, exclusively by the nomination party. Any mineral lease selected from this Tract and awarded by the Louisiana State Mineral and Energy Board shall be without warranty of any kind, either express, implied, or statutory, including, but not limited to, the implied warranties of merchantability and fitness for a particular purpose. Should the mineral lease awarded by the Louisiana State Mineral and Energy Board be subsequently modified, cancelled or abrogated due to the existence of conflicting leases, operating agreements, private claims or other future obligations or conditions which may affect all or any portion of the leased Tract, it shall not relieve the Lessee of the obligation to pay any bonus due thereon to the Louisiana State Mineral and Energy Board, nor shall the Louisiana State Mineral and Energy Board be obligated to refund any consideration paid by the Lessor prior to such modification, cancellation, or abrogation, including, but not limited to, bonuses, rentals and royalties.

NOTE: The State of Louisiana does hereby reserve, and this lease shall be subject to, the imprescriptible right of surface use in the nature of a servitude in favor of the Department of Natural Resources, including its Offices and Commissions, for the sole purpose of implementing, constructing, servicing and maintaining approved coastal zone management and/or restoration projects. Utilization of any and all rights derived under this lease by the mineral lessee, its agents, successors or assigns, shall not interfere with nor hinder the reasonable surface use by the Department of Natural Resources, its Offices or Commissions, as herein above reserved.

Applicant: OIL LAND SERVICES, INC.

Bidder	Cash Payment	Price/Acre	Rental	Oil	Gas	Other



**Legend**

-  19010017
-  Claimable Waterbottom
-  Active\_Leases



LAKE WASHINGTON

PLAQUEMINES

RATTLESNAKE BAYOU

P.O.B.

SL 1464

SL 1464

SL 17266

BARATARIA BAY

