

**TRACT 45060 - Portion of Block 2, West Cameron Area, Revised, Cameron Parish, Louisiana**

The beds and bottoms of all water bodies belonging to the State of Louisiana located in Block 2, West Cameron Area, Revised, together with any present lands formed by accretion to the shoreline or islands formed therein, located in Cameron Parish, Louisiana, owned by and not presently under mineral lease as of January 9, 2019, from the State of Louisiana, the geographical area of which is more fully described as follows: Beginning at a point within Block 2, West Cameron Area, Revised having Coordinates of X = 1,405,900.00 and Y = 406,267.00; thence East 7,459.00 feet to a point having Coordinates of X = 1,413,359.00 and Y = 406,267.00; thence South 7,882.00 feet to a point having Coordinates of X = 1,413,359.00 and Y = 398,385.00; thence West 7,459.00 feet to a point having Coordinates of X = 1,405,900.00 and Y = 398,385.00; thence North 7,882.00 feet to the point of beginning, containing approximately **1,349.67 acres**, all as more particularly outlined on a plat on file in the Office of Mineral Resources, Department of Natural Resources. All bearings, distances and coordinates are based on Louisiana Coordinate System of 1927, (North or South Zone).

NOTE: The above description of the Tract nominated for lease has been provided and corrected, where required, exclusively by the nomination party. Any mineral lease selected from this Tract and awarded by the Louisiana State Mineral and Energy Board shall be without warranty of any kind, either express, implied, or statutory, including, but not limited to, the implied warranties of merchantability and fitness for a particular purpose. Should the mineral lease awarded by the Louisiana State Mineral and Energy Board be subsequently modified, cancelled or abrogated due to the existence of conflicting leases, operating agreements, private claims or other future obligations or conditions which may affect all or any portion of the leased Tract, it shall not relieve the Lessee of the obligation to pay any bonus due thereon to the Louisiana State Mineral and Energy Board, nor shall the Louisiana State Mineral and Energy Board be obligated to refund any consideration paid by the Lessor prior to such modification, cancellation, or abrogation, including, but not limited to, bonuses, rentals and royalties.

NOTE: This tract is subject to Resolution No. 18-11-003 approved by the State Mineral Board at the November 14, 2018 Mineral Lease Sale. For full document, refer to the **"Notice of Publication"** at:

**<http://www.dnr.louisiana.gov/index.cfm/page/1454>.**

NOTE: There will be a minimum acreage bid on not less than 250 acres.

NOTE: Should a bidder desire to obtain an orphan well or wells for the purpose to re-establish production or sidetracked out of, the bidder should bid sufficient acreage necessary to allow for the well to be produced at a legal location in accordance with the spacing requirements of Statewide Order 29-E.

NOTE: The State of Louisiana does hereby reserve, and this lease shall be subject to, the imprescriptible right of surface use in the nature of a servitude in favor of the Department of Natural Resources, including its Offices and Commissions, for the sole purpose of implementing, constructing, servicing and maintaining approved coastal zone management and/or restoration projects. Utilization of any and all rights derived under this lease by the mineral lessee, its agents, successors or assigns, shall not interfere with nor hinder the reasonable surface use by the Department of Natural Resources, its Offices or Commissions, as herein above reserved.

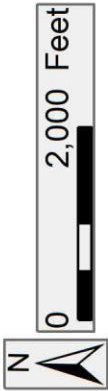
Applicant: STAFF OFFICE OF MINERAL RESOURCES

Bidder	Cash Payment	Price/ Acre	Rental	Oil	Gas	Other

Legend

19010018

Blocks



CAMERON

P.O.B.

WC0002

WC0003

WEST CAMERON AREA, REVISED

GULF OF MEXICO

**TRACT 45061 - Portion of Block 25, Grand Isle Area, Jefferson and Lafourche Parishes, Louisiana**

The beds and bottoms of all water bodies belonging to the State of Louisiana located in Block 25, Grand Isle Area, together with any present lands formed by accretion to the shoreline or islands formed therein, located in Jefferson and Lafourche Parishes, Louisiana, owned by and not presently under mineral lease as of January 9, 2019, from the State of Louisiana, the geographical area of which is more fully described as follows: Beginning at a point being the Northwest corner of Block 25, Grand Isle Area, at a Point having Coordinates of X = 2,385,227.73 and Y = 170,777.35; thence East 13,400.00 feet on the North line of said Block 25 to a point being the Northeast corner having Coordinates of X = 2,398,627.73 and Y = 170,777.35; thence South 5,877.35 feet along the East line of said Block 25 to a point having Coordinates of X = 2,398,627.73 and Y = 164,900.00; thence West 4,248.52 feet to a point being the Northeast corner of State Lease No. 1486, revised having coordinates of X = 2,394,379.21 and Y = 164,900.00; thence West 9,151.48 feet along the Northern boundary of said State Lease No. 1486 revised to a point being its Northwest corner, said point also being on the west line of said Block 25 having Coordinates of X = 2,385,227.73 and Y = 164,900.00; thence North 5,877.35 feet to the point of beginning, containing approximately **1,808.00 acres**, all as more particularly outlined on a plat on file in the Office of Mineral Resources, Department of Natural Resources. All bearings, distances and coordinates are based on Louisiana Coordinate System of 1927, (North or South Zone).

NOTE: The above description of the Tract nominated for lease has been provided and corrected, where required, exclusively by the nomination party. Any mineral lease selected from this Tract and awarded by the Louisiana State Mineral and Energy Board shall be without warranty of any kind, either express, implied, or statutory, including, but not limited to, the implied warranties of merchantability and fitness for a particular purpose. Should the mineral lease awarded by the Louisiana State Mineral and Energy Board be subsequently modified, cancelled or abrogated due to the existence of conflicting leases, operating agreements, private claims or other future obligations or conditions which may affect all or any portion of the leased Tract, it shall not relieve the Lessee of the obligation to pay any bonus due thereon to the Louisiana State Mineral and Energy Board, nor shall the Louisiana State Mineral and Energy Board be obligated to refund any consideration paid by the Lessor prior to such modification, cancellation, or abrogation, including, but not limited to, bonuses, rentals and royalties.

NOTE: In an effort to encourage deep well drilling in the Bay Marchand area, The State Mineral and Energy Board (Board) will consider bids on this tract with the following royalty minimums: 20% royalty or greater for production from wells drilled from the surface to 15,000 feet True Vertical Depth; 13.5% royalty or greater for production from wells completed with the top of the perforated interval 15,000' True Vertical Depth subsea or greater for two years beyond the completion of said wells or payout, whichever occurs first, then the royalty will increase to 1/6th.

NOTE: The State of Louisiana does hereby reserve, and this lease shall be subject to, the imprescriptible right of surface use in the nature of a servitude in favor of the Department of Natural Resources, including its Offices and Commissions, for the sole purpose of implementing, constructing, servicing and maintaining approved coastal zone management and/or restoration projects. Utilization of any and all rights derived under this lease by the mineral lessee, its agents, successors or assigns, shall not interfere with nor hinder the reasonable surface use by the Department of Natural Resources, its Offices or Commissions, as herein above reserved.

Applicant: CHIS & SID ASSOCIATES

Bidder	Cash Payment	Price/ Acre	Rental	Oil	Gas	Other

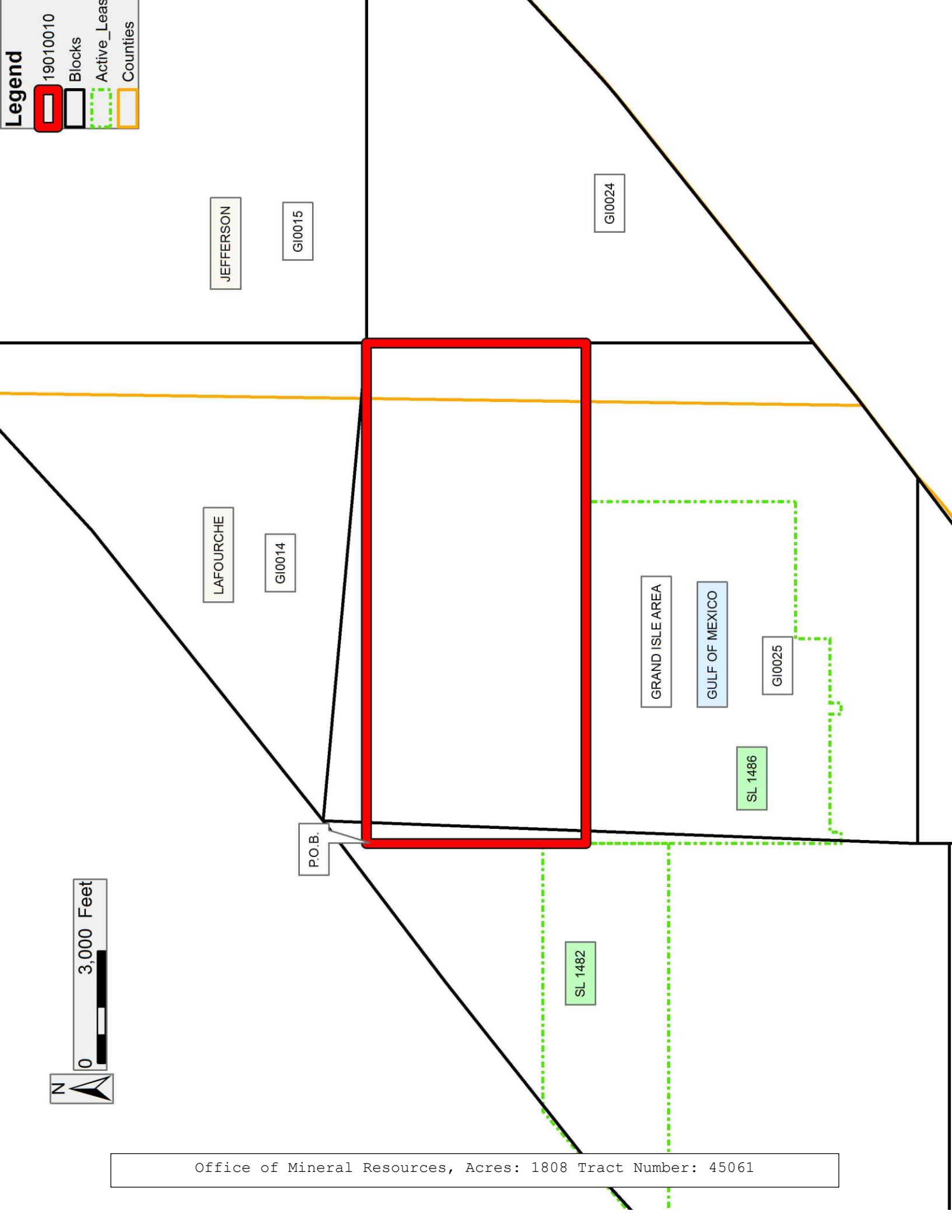
Legend

19010010

Blocks

Active\_Leas

Counties



**TRACT 45062 - Portion of Blocks 1, and 2, Bay Marchand Area, Blocks 25, and 26, Grand Isle Area, Jefferson and Lafourche Parishes, Louisiana**

The beds and bottoms of all water bodies belonging to the State of Louisiana located in Blocks 1, and 2, Bay Marchand Area, Blocks 25, and 26, Grand Isle Area, together with any present lands formed by accretion to the shoreline or islands formed therein, located in Jefferson and Lafourche Parishes, Louisiana, owned by and not presently under mineral lease as of January 9, 2019, from the State of Louisiana, the geographical area of which is more fully described as follows: Beginning at a point being the Northernmost Northeast corner of State Lease No. 1366 as amended, also being a point on the Southern boundary of State Lease NO. 1365 having Coordinates of X = 2,378,744.70 and Y = 155,172.00; thence along the boundary of said State Lease No. 1365 the following courses: East 6,483.03 feet to a point having Coordinates of X = 2,385,227.73 and Y = 155,172.00 and North 2,897.31 feet to the Southwest corner of State Lease No. 1486, as amended, having Coordinates of X = 2,385,227.73 and Y = 158,069.31; thence along the boundary of said State Lease No. 1486 the following courses: East 300.00 feet to a point having Coordinates of X = 2,385,527.73 and Y = 158,069.31, North 300.00 feet to a point having Coordinates of X = 2,385,527.73 and Y = 158,369.31, East 3,161.50 feet to a point having Coordinates of X = 2,388,689.23 and Y = 158,369.31, South 300.00 feet to a point having Coordinates of X = 2,388,689.23 and Y = 158,069.31, East 300.00 feet to a point having Coordinates of X = 2,388,989.23 and Y = 158,069.31, North 300.00 feet to a point having Coordinates of X = 2,388,989.23 and Y = 158,369.31, East 1,718.50 feet to a point having Coordinates of X = 2,390,707.73 and Y = 158,369.31, North 918.66 feet to a point having Coordinates of X = 2,390,707.73 and Y = 159,287.97, and East 3,671.48 feet to its Southeast corner to a point having Coordinates of X = 2,394,379.21 and Y = 159,287.97; thence North 5,612.03 feet to the Northeast corner of said State Lease No. 1486 having Coordinates of X = 2,394,379.21 and Y = 164,900.00; thence East 4,248.52 feet to a point being on the East line of Block 25 having Coordinates of X = 2,398,627.73 and Y = 164,900.00; thence South 6,091.27 feet on the East line of Block 25 to a point on the Three Mile Line, as decreed by the Supreme Court of the United States, as determined by a Special Master appointed therein, in litigation styled *United States v. State of Louisiana et al No. 9 Original*, in 1975, having Coordinates of X = 2,398,627.73 and Y = 158,808.73; thence along said Three Mile Line the following: Southwesterly along a straight line to a point having Coordinates of X = 2,397,195.00 and Y = 157,668.00, Southwesterly on an arc to the right having a radius of 18,240.60 feet and a center at X = 2,385,833 and Y = 171,938 to a point having Coordinates of X = 2,396,858 and Y = 157,406, Southwesterly along a straight line to a point having Coordinates of X = 2,392,712 and Y = 154,261, Southwesterly along a straight line to a point having Coordinates of X = 2,389,824 and Y = 151,968, Southwesterly on an arc to the right having a radius of 18,240.60 feet and a center at X = 2,376,485 and Y = 164,409 to a point being the Southeast corner of State Lease No. 19323 having Coordinates of X = 2,387,800.00 and Y = 150,102.06; thence along the boundary of State Lease No. 19323 the following courses: North 2,497.94 feet to a point having Coordinates of X = 2,387,800.00 and Y = 152,600.00 and West 2,572.27 feet to

its Northwest corner and a point on the boundary of said State Lease No. 1366 having Coordinates of X = 2,385,227.73 and Y = 152,600.00; thence along the boundary of State Lease No. 1366 the following courses: North 631.73 feet to a point having Coordinates of X = 2,385,227.73 and Y = 153,231.73, West 6,483.03 feet to a point having Coordinates of X = 2,378,744.70 and Y = 153,231.73, and North 1,940.27 feet to the point of beginning, containing approximately **2,283.18 acres, LESS AND EXCEPT** that portion thereof, if any, lying seaward of the line three nautical miles from the coast line of Louisiana, as said three mile line has been decreed by the Supreme Court of the United States, as determined by a Special Master appointed therein, in litigation styled **United States v. State of Louisiana et al No. 9 Original**, in 1975, all as more particularly outlined on a plat in the Office of Mineral Resources, Department of Natural Resources. All bearings, distances and coordinates are based on the Louisiana Coordinate System of 1927, (South Zone).

NOTE: The above description of the Tract nominated for lease has been provided and corrected, where required, exclusively by the nomination party. Any mineral lease selected from this Tract and awarded by the Louisiana State Mineral and Energy Board shall be without warranty of any kind, either express, implied, or statutory, including, but not limited to, the implied warranties of merchantability and fitness for a particular purpose. Should the mineral lease awarded by the Louisiana State Mineral and Energy Board be subsequently modified, cancelled or abrogated due to the existence of conflicting leases, operating agreements, private claims or other future obligations or conditions which may affect all or any portion of the leased Tract, it shall not relieve the Lessee of the obligation to pay any bonus due thereon to the Louisiana State Mineral and Energy Board, nor shall the Louisiana State Mineral and Energy Board be obligated to refund any consideration paid by the Lessor prior to such modification, cancellation, or abrogation, including, but not limited to, bonuses, rentals and royalties.

NOTE: In an effort to encourage deep well drilling in the Bay Marchand area, The State Mineral and Energy Board (Board) will consider bids on this tract with the following royalty minimums: 20% royalty or greater for production from wells drilled from the surface to 15,000 feet True Vertical Depth; 13.5% royalty or greater for production from wells completed with the top of the perforated interval 15,000' True Vertical Depth subsea or greater for two years beyond the completion of said wells or payout, whichever occurs first, then the royalty will increase to 1/6th.

NOTE: The State of Louisiana does hereby reserve, and this lease shall be subject to, the imprescriptible right of surface use in the nature of a servitude in favor of the Department of Natural Resources, including its Offices and Commissions, for the sole purpose of implementing, constructing, servicing and maintaining approved coastal zone management and/or restoration projects. Utilization of any and all rights derived under this lease by the mineral lessee, its agents, successors or assigns, shall not



interfere with nor hinder the reasonable surface use by the Department of Natural Resources, its Offices or Commissions, as herein above reserved.

Applicant: CHIS & SID ASSOCIATES

Bidder	Cash Payment	Price/ Acre	Rental	Oil	Gas	Other

**Legend**

19010011  
Blocks  
Active\_Leads  
Counties

JEFFERSON

GI0024

LAFOURCHE

G10025

SL 1486

GI0026

SL 19323

SL 1366

BAY MARCHAND AREA

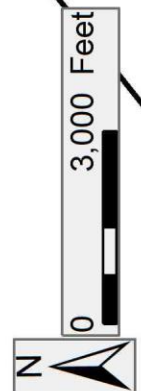
BM0002

GULF OF MEXICO

BM0001

SL 1365

P.O.B.



Office of Mineral Resources, Acres: 2283.18 Tract Number: 45062

**TRACT 45063 - Portion of Blocks 4, and 5, Bay Marchand Area, Lafourche Parish, Louisiana**

The beds and bottoms of all water bodies belonging to the State of Louisiana located in Blocks 4, and 5, Bay Marchand Area, together with any present lands formed by accretion to the shoreline or islands formed therein, located in Lafourche Parish, Louisiana, owned by and not presently under mineral lease as of January 9, 2019, from the State of Louisiana, the geographical area of which is more fully described as follows: Beginning at a point having Coordinates of X = 2,361,325.00 and Y = 144,000.00; thence West 6,647.27 feet to a point on the West line of Block 4 and the East line of Block 5 having Coordinates of X = 2,354,677.73 and Y = 144,000.00; thence West 1,216.74 feet to a point having Coordinates of X = 2,353,460.99 and Y = 146,438.53; thence North 1,738.83 feet to a point being the Southeast corner of State Lease No. 6430, as amended, having Coordinates of X = 2,353,460.99 and Y = 145,738.83; thence North 4,062.58 feet to the Southeast corner of State Lease No. 6430 having Coordinates of X = 2,353,460.99 and Y = 149,801.41; thence North 10 degrees 39 minutes 51 seconds East 2,871.09 feet to a point on the Louisiana Coastline, as decreed by the Supreme Court of the United States, as determined by a Special Master appointed therein, in litigation styled *United States v. State of Louisiana et al No. 9 Original*, in 1975, having Coordinates of X = 2,353,992.29 and Y = 152,622.91; thence along said Coastline the following courses: Southeasterly along a straight line to a point having Coordinates of X = 2,354,070 and Y = 152,599, Northeasterly along a straight line to a point having Coordinates of X = 2,356,733 and Y = 154,323, Northeasterly along a straight line to a point having Coordinates of X = 2,362,830 and Y = 157,339, and Northeasterly along a straight line to a point on the East line of Block 4 having Coordinates of X = 2,364,327.73 and Y = 157,348.59; thence South 3,688.59 feet to a point having Coordinates of X = 2,364,327.73 and Y = 153,660.00; thence West 3,002.73 feet to a point having Coordinates of X = 2,361,325.00 and Y = 153,660.00; thence South 9,660.00 feet to the point of beginning, containing approximately **2,130.58 acres**, all as more particularly outlined on a plat on file in the Office of Mineral Resources, Department of Natural Resources. All bearings, distances and coordinates are based on Louisiana Coordinate System of 1927, (North or South Zone).

NOTE: The above description of the Tract nominated for lease has been provided and corrected, where required, exclusively by the nomination party. Any mineral lease selected from this Tract and awarded by the Louisiana State Mineral and Energy Board shall be without warranty of any kind, either express, implied, or statutory, including, but not limited to, the implied warranties of merchantability and fitness for a particular purpose. Should the mineral lease awarded by the Louisiana State Mineral and Energy Board be subsequently modified, cancelled or abrogated due to the existence of conflicting leases, operating agreements, private claims or other future obligations or conditions which may affect all or any portion of the leased Tract, it shall not relieve the Lessee of the obligation to pay any bonus due thereon to the Louisiana State Mineral and Energy Board, nor shall the Louisiana State Mineral and Energy Board be obligated to refund any

consideration paid by the Lessor prior to such modification, cancellation, or abrogation, including, but not limited to, bonuses, rentals and royalties.

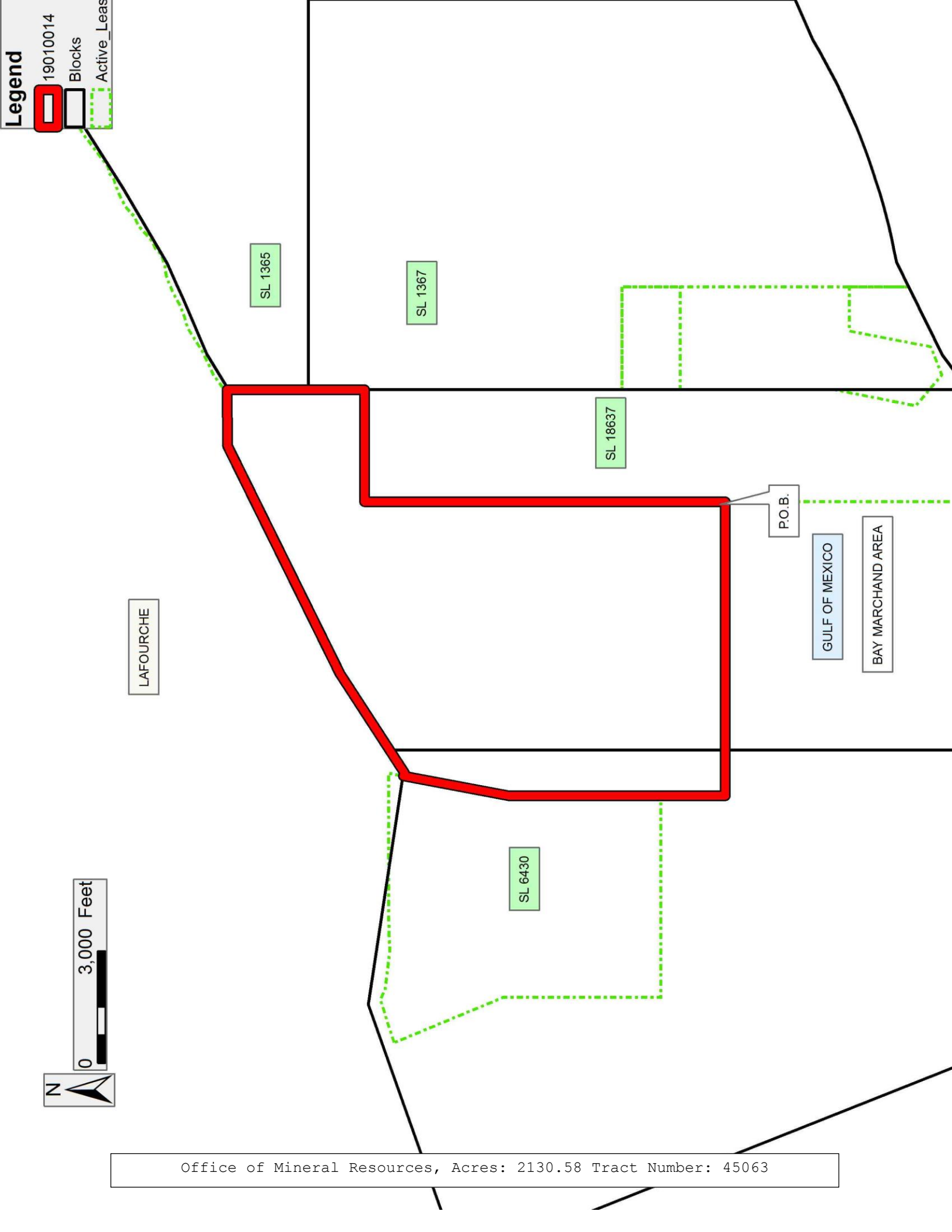
NOTE: In an effort to encourage deep well drilling in the Bay Marchand area, The State Mineral and Energy Board (Board) will consider bids on this tract with the following royalty minimums: 20% royalty or greater for production from wells drilled from the surface to 15,000 feet True Vertical Depth; 13.5% royalty or greater for production from wells completed with the top of the perforated interval 15,000' True Vertical Depth subsea or greater for two years beyond the completion of said wells or payout, whichever occurs first, then the royalty will increase to 1/6th.

NOTE: The State of Louisiana does hereby reserve, and this lease shall be subject to, the imprescriptible right of surface use in the nature of a servitude in favor of the Department of Natural Resources, including its Offices and Commissions, for the sole purpose of implementing, constructing, servicing and maintaining approved coastal zone management and/or restoration projects. Utilization of any and all rights derived under this lease by the mineral lessee, its agents, successors or assigns, shall not interfere with nor hinder the reasonable surface use by the Department of Natural Resources, its Offices or Commissions, as herein above reserved.

NOTE: It appears, according to our records, that a portion of this Tract is located within the restrictive safety fairway area as set out by the Corps of Engineers, U.S. Army and/or the restrictive anchorage area as set out by the U.S. Coast Guard.

Applicant: CHIS & SID ASSOCIATES

Bidder	Cash Payment	Price/ Acre	Rental	Oil	Gas	Other



**Legend**

19010014

Blocks

Active\_Leas

0 3,000 Feet

N

**TRACT 45064 - Portion of Block 2, Bay Marchand Area, Lafourche Parish, Louisiana**

The beds and bottoms of all water bodies belonging to the State of Louisiana located in Block 2, Bay Marchand Area, together with any present lands formed by accretion to the shoreline or islands formed therein, located in Lafourche Parish, Louisiana, owned by and not presently under mineral lease as of January 9, 2019, from the State of Louisiana, the geographical area of which is more fully described as follows: Beginning at a point being an interior corner of State Lease No. 1366, as amended, having Coordinates of X = 2,378,971.21 and Y = 147,070.14; thence along the boundary of said State Lease No. 1366 the following courses: North 58 degrees 46 minutes 40 seconds East 2,220.71 feet to a point having Coordinates of X = 2,380,870.28 and Y = 148,221.27 and South 33 degrees 01 minutes 29 seconds East 2,213.94 feet to a point on the Three Mile Line, as decreed by the Supreme Court of the United States, as determined by a Special Master appointed therein, in litigation styled *United States v. State of Louisiana et al No. 9 Original*, in 1975, having Coordinates of X = 2,382,076.88 and Y = 146,365.02; thence Southwesterly along a straight line to a corner of said State Lease No. 1366 having Coordinates of X = 2,380,202.56 and Y = 145,175.81; thence North 33 degrees 01 minutes 29 seconds West 2,259.36 feet to the point of beginning, containing approximately **113.97 acres, LESS AND EXCEPT** that portion thereof, if any, lying seaward of the line three nautical miles from the coast line of Louisiana, as said three mile line has been decreed by the Supreme Court of the United States, as determined by a Special Master appointed therein, in litigation styled **United States v. State of Louisiana et al No. 9 Original**, in 1975, all as more particularly outlined on a plat in the Office of Mineral Resources, Department of Natural Resources. All bearings, distances and coordinates are based on the Louisiana Coordinate System of 1927, (South Zone) .

NOTE: The above description of the Tract nominated for lease has been provided and corrected, where required, exclusively by the nomination party. Any mineral lease selected from this Tract and awarded by the Louisiana State Mineral and Energy Board shall be without warranty of any kind, either express, implied, or statutory, including, but not limited to, the implied warranties of merchantability and fitness for a particular purpose. Should the mineral lease awarded by the Louisiana State Mineral and Energy Board be subsequently modified, cancelled or abrogated due to the existence of conflicting leases, operating agreements, private claims or other future obligations or conditions which may affect all or any portion of the leased Tract, it shall not relieve the Lessee of the obligation to pay any bonus due thereon to the Louisiana State Mineral and Energy Board, nor shall the Louisiana State Mineral and Energy Board be obligated to refund any consideration paid by the Lessor prior to such modification, cancellation, or abrogation, including, but not limited to, bonuses, rentals and royalties.

NOTE: In an effort to encourage deep well drilling in the Bay Marchand area, The State Mineral and Energy Board (Board) will consider bids on this tract with the following royalty minimums: 20% royalty or greater for production


from wells drilled from the surface to 15,000 feet True Vertical Depth; 13.5% royalty or greater for production from wells completed with the top of the perforated interval 15,000' True Vertical Depth subsea or greater for two years beyond the completion of said wells or payout, whichever occurs first, then the royalty will increase to 1/6th.


NOTE: The State of Louisiana does hereby reserve, and this lease shall be subject to, the imprescriptible right of surface use in the nature of a servitude in favor of the Department of Natural Resources, including its Offices and Commissions, for the sole purpose of implementing, constructing, servicing and maintaining approved coastal zone management and/or restoration projects. Utilization of any and all rights derived under this lease by the mineral lessee, its agents, successors or assigns, shall not interfere with nor hinder the reasonable surface use by the Department of Natural Resources, its Offices or Commissions, as herein above reserved.


Applicant: CHIS & SID ASSOCIATES

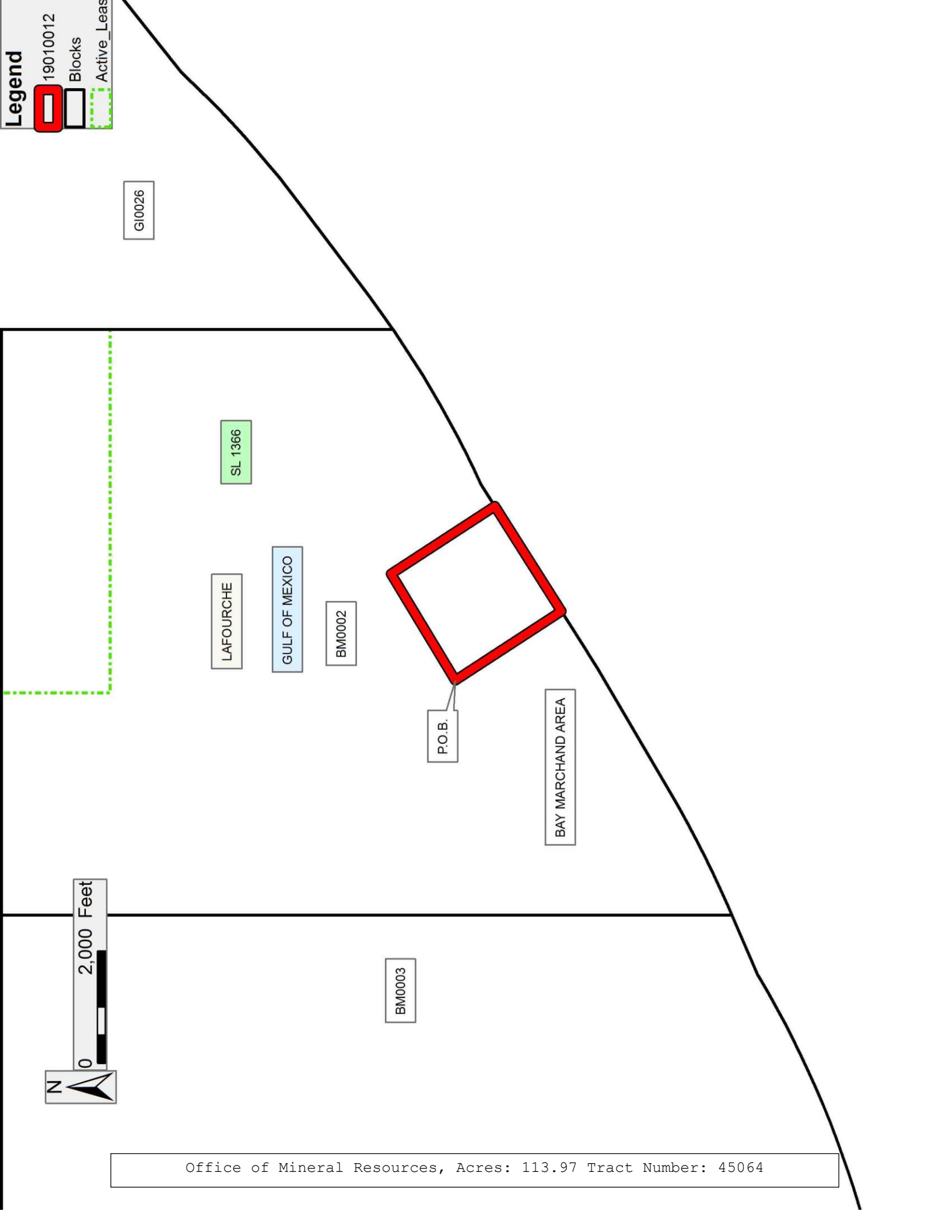
Bidder	Cash Payment	Price/ Acre	Rental	Oil	Gas	Other

**Legend**

 19010012

 Blocks

 Active\_Leas





**TRACT 45065 - Portion of Block 5, Bay Marchand Area, Lafourche Parish, Louisiana**

The beds and bottoms of all water bodies belonging to the State of Louisiana located in Block 5, Bay Marchand Area, together with any present lands formed by accretion to the shoreline or islands formed therein, located in Lafourche Parish, Louisiana, owned by and not presently under mineral lease as of January 9, 2019, from the State of Louisiana, the geographical area of which is more fully described as follows: Beginning at a point having Coordinates of X = 2,343,927.97 and Y = 143,586.00; thence East 4,128.21 feet to a point having Coordinates of X = 2,348,056.18 and Y = 143,586.00; thence North 2,152.23 feet to the Southwest corner of State Lease No. 6430, as amended having Coordinates of X = 2,348,056.18 and Y = 145,738.53; thence North 89 degrees 59 minutes 48 seconds East 5,404.81 feet along the southern line of said State Lease No. 6430 to a point being the Southeast corner of said State Lease No. 6430 having Coordinates of X = 2,353,460.99 and Y = 145,738.55; thence South 1,738.53 feet to a point having Coordinates of X = 2,353,460.99 and Y = 144,000.00; thence South 9,631.22 feet to a point on the Three Mile Line, as decreed by the Supreme Court of the United States, as determined by a Special Master appointed therein, in litigation styled *United States v. State of Louisiana et al No. 9 Original*, in 1975, having Coordinates of X = 2,353,460.99 and Y = 134,368.78; thence along said Three Mile Line the following: Northwesterly on an arc having a radius of 18,240.60 feet and a center at X = 2,354,070 and Y = 152,599 to a point having Coordinates of X = 2,349,744 and Y = 134,879, Southwesterly along a straight line to a point having Coordinates of X = 2,348,372 and Y = 134,394, and Southwesterly along a straight line to a point on the South line of Block 5 having Coordinates of X = 2,348,202.62 and Y = 134,330.00; thence West 10,457.00 feet along the South line of said Block 5 to a point having Coordinates of X = 2,337,745.62 and Y = 134,330.00; thence North 68 degrees 22 minutes 13 seconds East 9,158.81 feet along the boundary of said Block 5 to a point having Coordinates of X = 2,346,259.51 and Y = 137,706.01; thence North 21 degrees 37 minutes 46 seconds West 6,325.38 feet along the boundary of said Block 5 to the point of beginning, containing approximately **2,255.28 acres, LESS AND EXCEPT** that portion thereof, if any, lying seaward of the line three nautical miles from the coast line of Louisiana, as said three mile line has been decreed by the Supreme Court of the United States, as determined by a Special Master appointed therein, in litigation styled **United States v. State of Louisiana et al No. 9 Original**, in 1975, all as more particularly outlined on a plat in the Office of Mineral Resources, Department of Natural Resources. All bearings, distances and coordinates are based on the Louisiana Coordinate System of 1927, (South Zone).

NOTE: The above description of the Tract nominated for lease has been provided and corrected, where required, exclusively by the nomination party. Any mineral lease selected from this Tract and awarded by the Louisiana State Mineral and Energy Board shall be without warranty of any kind, either express, implied, or statutory, including, but not limited to, the implied warranties of merchantability and fitness for a particular purpose. Should the mineral lease awarded by the Louisiana State Mineral and Energy Board be

subsequently modified, cancelled or abrogated due to the existence of conflicting leases, operating agreements, private claims or other future obligations or conditions which may affect all or any portion of the leased Tract, it shall not relieve the Lessee of the obligation to pay any bonus due thereon to the Louisiana State Mineral and Energy Board, nor shall the Louisiana State Mineral and Energy Board be obligated to refund any consideration paid by the Lessor prior to such modification, cancellation, or abrogation, including, but not limited to, bonuses, rentals and royalties.

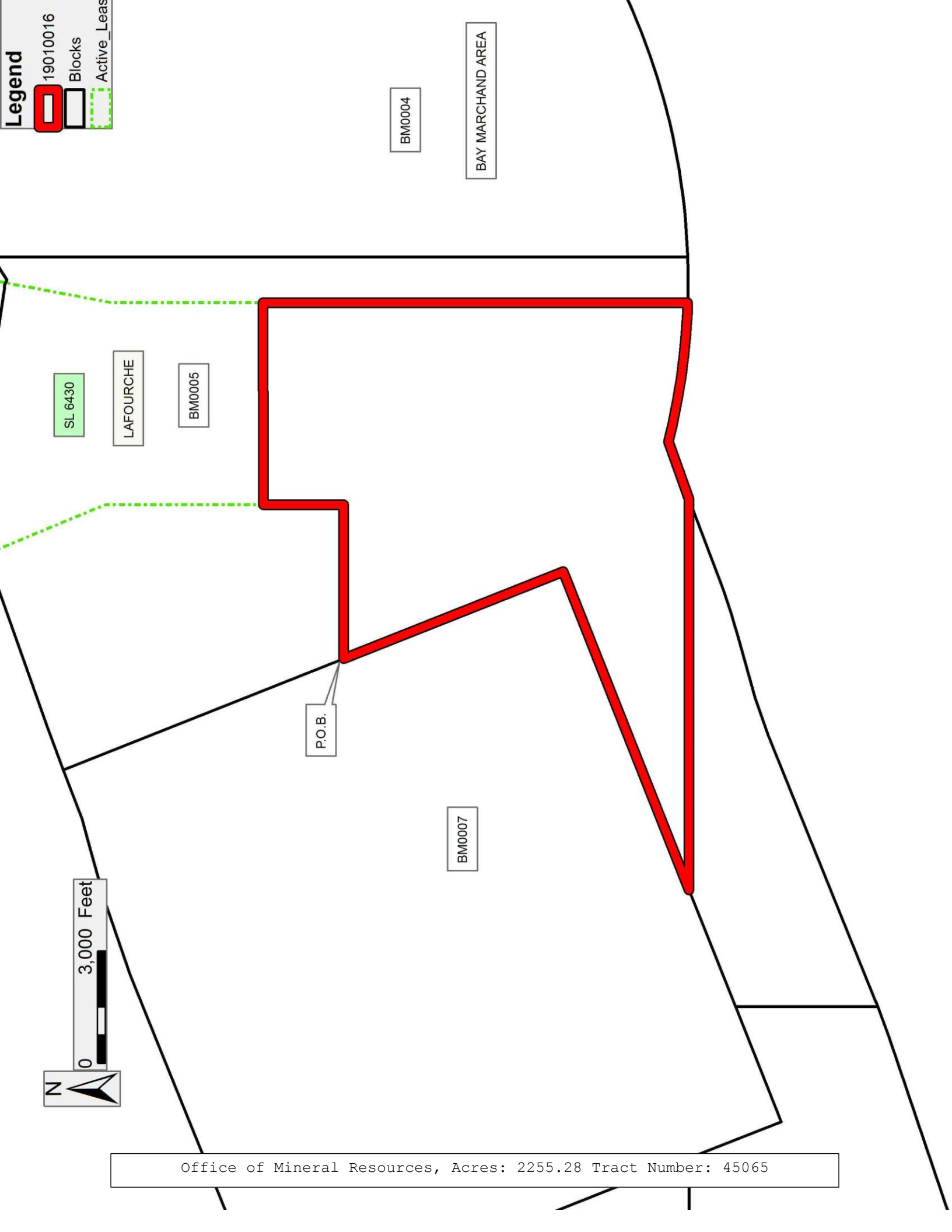
NOTE: In an effort to encourage deep well drilling in the Bay Marchand area, The State Mineral and Energy Board (Board) will consider bids on this tract with the following royalty minimums: 20% royalty or greater for production from wells drilled from the surface to 15,000 feet True Vertical Depth; 13.5% royalty or greater for production from wells completed with the top of the perforated interval 15,000' True Vertical Depth subsea or greater for two years beyond the completion of said wells or payout, whichever occurs first, then the royalty will increase to 1/6th.

NOTE: The State of Louisiana does hereby reserve, and this lease shall be subject to, the imprescriptible right of surface use in the nature of a servitude in favor of the Department of Natural Resources, including its Offices and Commissions, for the sole purpose of implementing, constructing, servicing and maintaining approved coastal zone management and/or restoration projects. Utilization of any and all rights derived under this lease by the mineral lessee, its agents, successors or assigns, shall not interfere with nor hinder the reasonable surface use by the Department of Natural Resources, its Offices or Commissions, as herein above reserved.

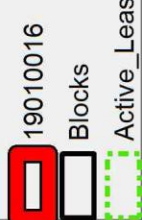
NOTE: It appears, according to our records, that a portion of this Tract is located within the restrictive safety fairway area as set out by the Corps of Engineers, U.S. Army and/or the restrictive anchorage area as set out by the U.S. Coast Guard.

Applicant: CHIS & SID ASSOCIATES

Bidder	Cash Payment	Price/ Acre	Rental	Oil	Gas	Other



Legend



SL 6430

LAFOURCHE

BM0005

BM0004

BAY MARCHAND AREA

P.O.B.

BM0007



Office of Mineral Resources, Acres: 2255.28 Tract Number: 45065

**TRACT 45066 - Portion of Blocks 3, and 4, Bay Marchand Area, Lafourche Parish, Louisiana**

The beds and bottoms of all water bodies belonging to the State of Louisiana located in Blocks 3, and 4, Bay Marchand Area, together with any present lands formed by accretion to the shoreline or islands formed therein, located in Lafourche Parish, Louisiana, owned by and not presently under mineral lease as of January 9, 2019, from the State of Louisiana, the geographical area of which is more fully described as follows: Beginning at a point on the boundary of State Lease No. 18637 having Coordinates of X = 2,364,327.73 and Y = 141,070.00; thence along the said boundary of State Lease No. 18637 the following courses: North 00 degrees 00 minutes 15 seconds East 4,143.87 feet to a point having Coordinates of X = 2,364,328.04 and Y = 145,213.87 and South 89 degrees 59 minutes 59 seconds East 2,754.06 feet to a corner of said State Lease having Coordinates of X = 2,367,082.10 and Y = 145,213.85; thence South 4,533.77 feet to a point to a corner of said State Lease having Coordinates of X = 2,367,082.10 and Y = 140,680.08; thence along the said boundary of State Lease No. 18637 the following courses: South 89 degrees 59 minutes 46 seconds West 1,182.10 feet to a point having Coordinates of X = 2,365,900.00 and Y = 140,680.00 and South 10 degrees 54 minutes 18 seconds West 2,220.09 feet to a point having Coordinates of X = 2,365,480.00 and Y = 138,500.00; thence South 68 degrees 11 minutes 55 seconds West 807.77 feet to a point having Coordinates of X = 2,364,730.00 and Y = 138,200.00; thence North 49 degrees 51 minutes 24 seconds West 1,085.77 feet to a point having Coordinates of X = 2,363,900.00 and Y = 138,900.00; thence North 11 degrees 09 minutes 02 seconds East 2,211.75 feet to the point of beginning, containing approximately **371.06 acres**, all as more particularly outlined on a plat on file in the Office of Mineral Resources, Department of Natural Resources. All bearings, distances and coordinates are based on Louisiana Coordinate System of 1927, (North or South Zone).

NOTE: The above description of the Tract nominated for lease has been provided and corrected, where required, exclusively by the nomination party. Any mineral lease selected from this Tract and awarded by the Louisiana State Mineral and Energy Board shall be without warranty of any kind, either express, implied, or statutory, including, but not limited to, the implied warranties of merchantability and fitness for a particular purpose. Should the mineral lease awarded by the Louisiana State Mineral and Energy Board be subsequently modified, cancelled or abrogated due to the existence of conflicting leases, operating agreements, private claims or other future obligations or conditions which may affect all or any portion of the leased Tract, it shall not relieve the Lessee of the obligation to pay any bonus due thereon to the Louisiana State Mineral and Energy Board, nor shall the Louisiana State Mineral and Energy Board be obligated to refund any consideration paid by the Lessor prior to such modification, cancellation, or abrogation, including, but not limited to, bonuses, rentals and royalties.

NOTE: In an effort to encourage deep well drilling in the Bay Marchand area, The State Mineral and Energy Board (Board) will consider bids on this tract with the following royalty minimums: 20% royalty or greater for production

from wells drilled from the surface to 15,000 feet True Vertical Depth; 13.5% royalty or greater for production from wells completed with the top of the perforated interval 15,000' True Vertical Depth subsea or greater for two years beyond the completion of said wells or payout, whichever occurs first, then the royalty will increase to 1/6th.


NOTE: The State of Louisiana does hereby reserve, and this lease shall be subject to, the imprescriptible right of surface use in the nature of a servitude in favor of the Department of Natural Resources, including its Offices and Commissions, for the sole purpose of implementing, constructing, servicing and maintaining approved coastal zone management and/or restoration projects. Utilization of any and all rights derived under this lease by the mineral lessee, its agents, successors or assigns, shall not interfere with nor hinder the reasonable surface use by the Department of Natural Resources, its Offices or Commissions, as herein above reserved.


NOTE: It appears, according to our records, that a portion of this Tract is located within the restrictive safety fairway area as set out by the Corps of Engineers, U.S. Army and/or the restrictive anchorage area as set out by the U.S. Coast Guard.


Applicant: CHIS & SID ASSOCIATES

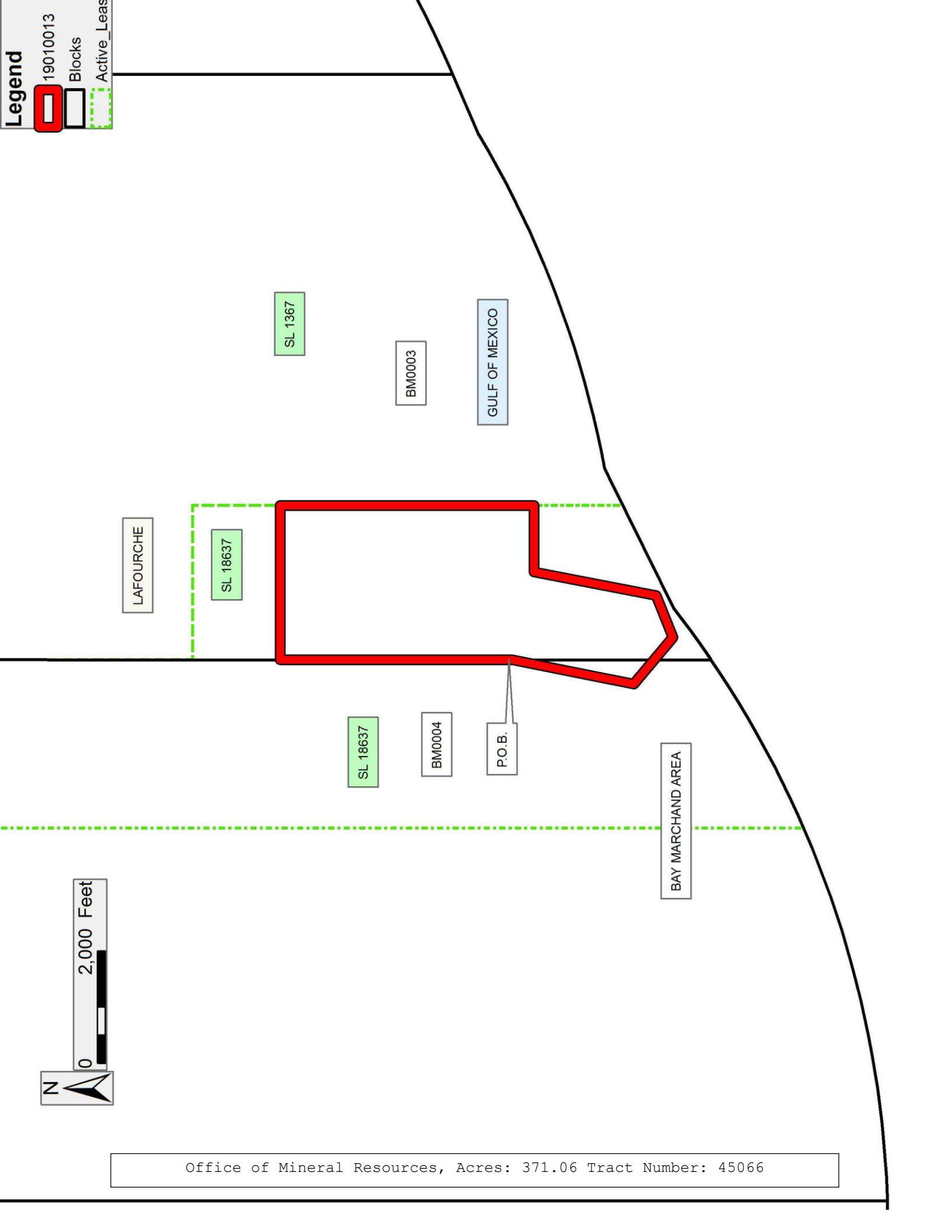
Bidder	Cash Payment	Price/ Acre	Rental	Oil	Gas	Other

**Legend**


19010013


Blocks


Active\_Leas



**TRACT 45067 - Portion of Blocks 4, and 5, Bay Marchand Area, Lafourche Parish, Louisiana**

The beds and bottoms of all water bodies belonging to the State of Louisiana located in Blocks 4, and 5, Bay Marchand Area, together with any present lands formed by accretion to the shoreline or islands formed therein, located in Lafourche Parish, Louisiana, owned by and not presently under mineral lease as of January 9, 2019, from the State of Louisiana, the geographical area of which is more fully described as follows: Beginning at a point on the boundary of State Lease No. 18637 having Coordinates of X = 2,361,325.00 and Y = 144,000.00; thence South 8,136.47 feet along the boundary of said State Lease No. 18637 to its Southwest corner and a point on the Three Mile Line, as decreed by the Supreme Court of the United States, as determined by a Special Master appointed therein, in litigation styled *United States v. State of Louisiana et al No. 9 Original*, in 1975, having Coordinates of X = 2,361,325.00 and Y = 135,863.53; thence Southwesterly on an arc to the right having a radius of 18,240.60 feet and a center located at X = 2,354,070 and Y = 152,599 to a point on the West line of Block 4, Bay Marchand Area having Coordinates of X = 2,353,460.99 and Y = 134,368.73; thence North 9,631.22 feet to a point having Coordinates of X = 2,353,460.99 and Y = 144,000.00; thence East 1,216.74 feet to a point on the East line of Block 5 and the West line of Block 4 having Coordinates of X = 2,354,677.73 and Y = 144,000.00; thence East 6,647.27 feet to the point of beginning, containing approximately **1,658.43 acres, LESS AND EXCEPT** that portion thereof, if any, lying seaward of the line three nautical miles from the coast line of Louisiana, as said three mile line has been decreed by the Supreme Court of the United States, as determined by a Special Master appointed therein, in litigation styled **United States v. State of Louisiana et al No. 9 Original**, in 1975, all as more particularly outlined on a plat in the Office of Mineral Resources, Department of Natural Resources. All bearings, distances and coordinates are based on the Louisiana Coordinate System of 1927, (South Zone).

NOTE: The above description of the Tract nominated for lease has been provided and corrected, where required, exclusively by the nomination party. Any mineral lease selected from this Tract and awarded by the Louisiana State Mineral and Energy Board shall be without warranty of any kind, either express, implied, or statutory, including, but not limited to, the implied warranties of merchantability and fitness for a particular purpose. Should the mineral lease awarded by the Louisiana State Mineral and Energy Board be subsequently modified, cancelled or abrogated due to the existence of conflicting leases, operating agreements, private claims or other future obligations or conditions which may affect all or any portion of the leased Tract, it shall not relieve the Lessee of the obligation to pay any bonus due thereon to the Louisiana State Mineral and Energy Board, nor shall the Louisiana State Mineral and Energy Board be obligated to refund any consideration paid by the Lessor prior to such modification, cancellation, or abrogation, including, but not limited to, bonuses, rentals and royalties.

NOTE: In an effort to encourage deep well drilling in the Bay Marchand area, The State Mineral and Energy Board (Board) will consider bids on this tract with the following royalty minimums: 20% royalty or greater for production from wells drilled from the surface to 15,000 feet True Vertical Depth; 13.5% royalty or greater for production from wells completed with the top of the perforated interval 15,000' True Vertical Depth subsea or greater for two years beyond the completion of said wells or payout, whichever occurs first, then the royalty will increase to 1/6th.

NOTE: The State of Louisiana does hereby reserve, and this lease shall be subject to, the imprescriptible right of surface use in the nature of a servitude in favor of the Department of Natural Resources, including its Offices and Commissions, for the sole purpose of implementing, constructing, servicing and maintaining approved coastal zone management and/or restoration projects. Utilization of any and all rights derived under this lease by the mineral lessee, its agents, successors or assigns, shall not interfere with nor hinder the reasonable surface use by the Department of Natural Resources, its Offices or Commissions, as herein above reserved.

NOTE: It appears, according to our records, that a portion of this Tract is located within the restrictive safety fairway area as set out by the Corps of Engineers, U.S. Army and/or the restrictive anchorage area as set out by the U.S. Coast Guard.

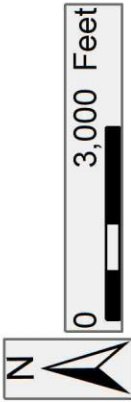
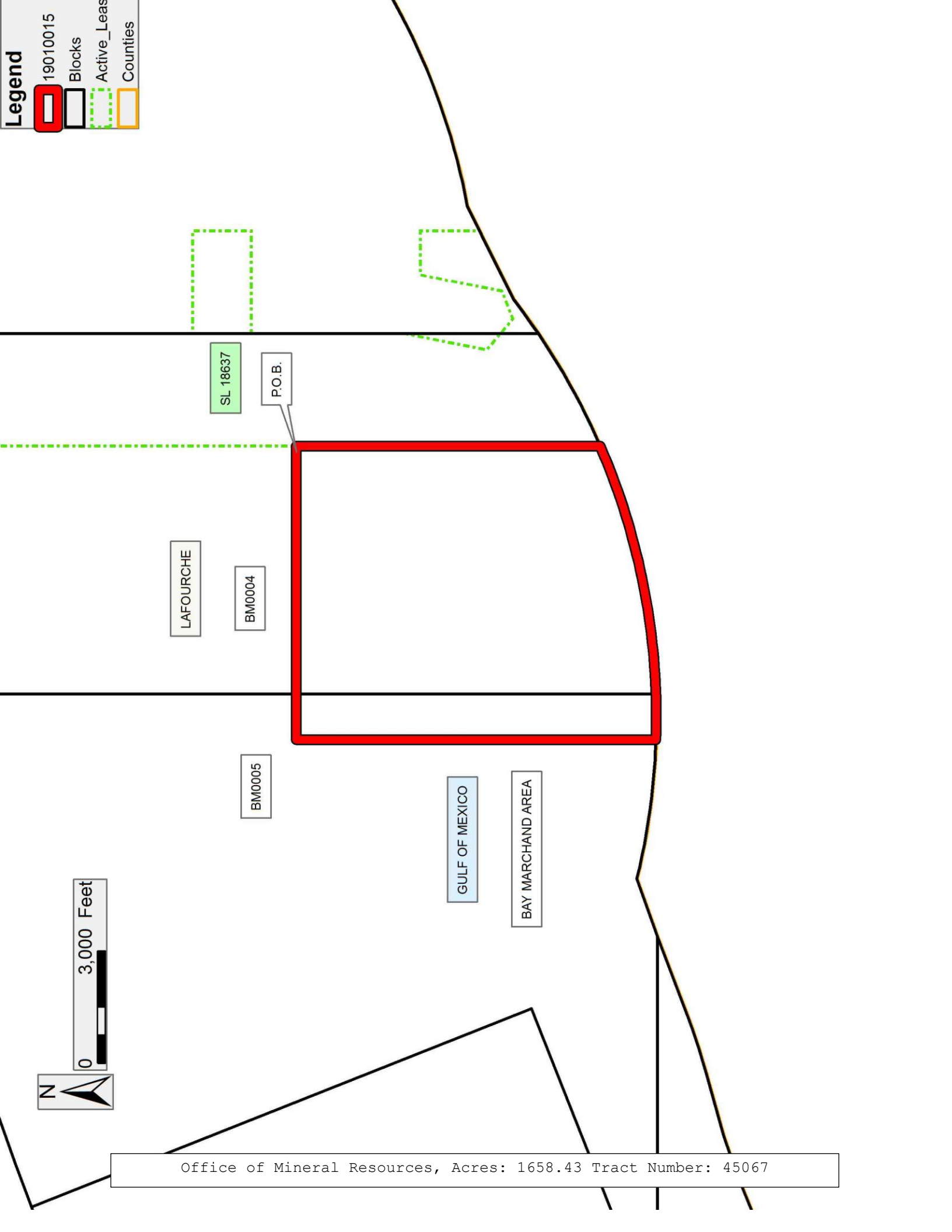
Applicant: CHIS & SID ASSOCIATES

Bidder	Cash Payment	Price/ Acre	Rental	Oil	Gas	Other



**Legend**

- 19010015
- Blocks
- Active\_Leas
- Counties



Office of Mineral Resources, Acres: 1658.43 Tract Number: 45067