

TRACT 44829 - St. Mary and Terrebonne Parishes, Louisiana

All of the lands now or formerly constituting the beds and bottoms of all water bodies of every nature and description as to which title is vested in the State of Louisiana, together with all islands arising therein and other lands formed by accretion or by reliction, where allowed by law, excepting tax adjudicated lands, and not presently under mineral lease on January 10, 2018, situated in St. Mary and Terrebonne Parishes, Louisiana, and more particularly described as follows: Beginning at a point having Coordinates of X = 2,014,848.29 and Y = 305,005.00; thence East 9,386.71 feet to a point having Coordinate of X = 2,024,235.00 and Y = 305,005.00; thence South 01 degrees 54 minutes 47 seconds West 7,130.86 feet to a point being the Northwest corner of State Lease No. 14108, as amended, having Coordinates of X = 2,023,996.96 and Y = 297,878.11, said point also being the Northeast corner State Lease No. 15470, as amended; thence along the boundary of said State Lease No. 15470, as amended, the following: North 67 degrees 51 minutes 00 seconds West 3,584.46 feet to a point having Coordinates of X = 2,020,677.03 and Y = 299,229.57 and South 12 degrees 24 minutes 31 seconds West 823.86 feet to the Northern point of State Lease No. 15855, as amended, having Coordinates of X = 2,020,500.00 and Y = 298,424.96; thence along the boundary of said State Lease No. 15855, as amended, the following: South 12 degrees 24 minutes 30 seconds West 1,865.30 feet to a point having Coordinates of X = 2,020,099.19 and Y = 296,603.23 and South 78 degrees 15 minutes 29 seconds East 409.38 feet to a point having Coordinates of X = 2,020,500.00 and Y = 296,519.92, said point being the Southwest corner of said State Lease 15470, as amended; thence South 78 degrees 15 minutes 27 seconds East 3,164.91 feet along the boundary of said State Lease No. 15470, as amended, to a point being its Southeast corner having Coordinates of X = 2,023,598.68 and Y = 295,875.82, said point also being a point on the boundary of State Lease 14108, as amended; thence South 11 degrees 15 minutes 00 seconds West 288.48 feet along the boundary of said State Lease No. 14108, as amended, to a point being its Southwest corner of having Coordinates of X = 2,023,542.40 and Y = 295,592.88; thence South 1,577.91 feet to a point having Coordinates of X = 2,023,542.40 and Y = 294,014.97; thence Westerly approximately 1,717 feet to a point of intersection with the Northern boundary of the Atchafalaya Delta Wildlife Management Area having a Coordinate of Y = 294,014.97; thence Northwesterly along the Northern boundary of said Atchafalaya Delta Wildlife Management Area to a point of intersection with a line having a Coordinate of Y = 297,838.03; thence Westerly approximately 1,750 feet to a point having Coordinates of X = 2,014,848.29 and Y = 297,838.03; thence North 7,166.97 feet to the point of beginning, **LESS AND EXCEPT** that portion, if any of the above described tract which may lie inside of the boundary of said Atchafalaya Delta Wildlife Management Area, containing approximately **940 acres**, all as more particularly outlined on a plat on file in the Office of Mineral Resources, Department of Natural Resources. All bearings, distances and coordinates are based on Louisiana Coordinate System of 1927, (North or South Zone), where applicable.

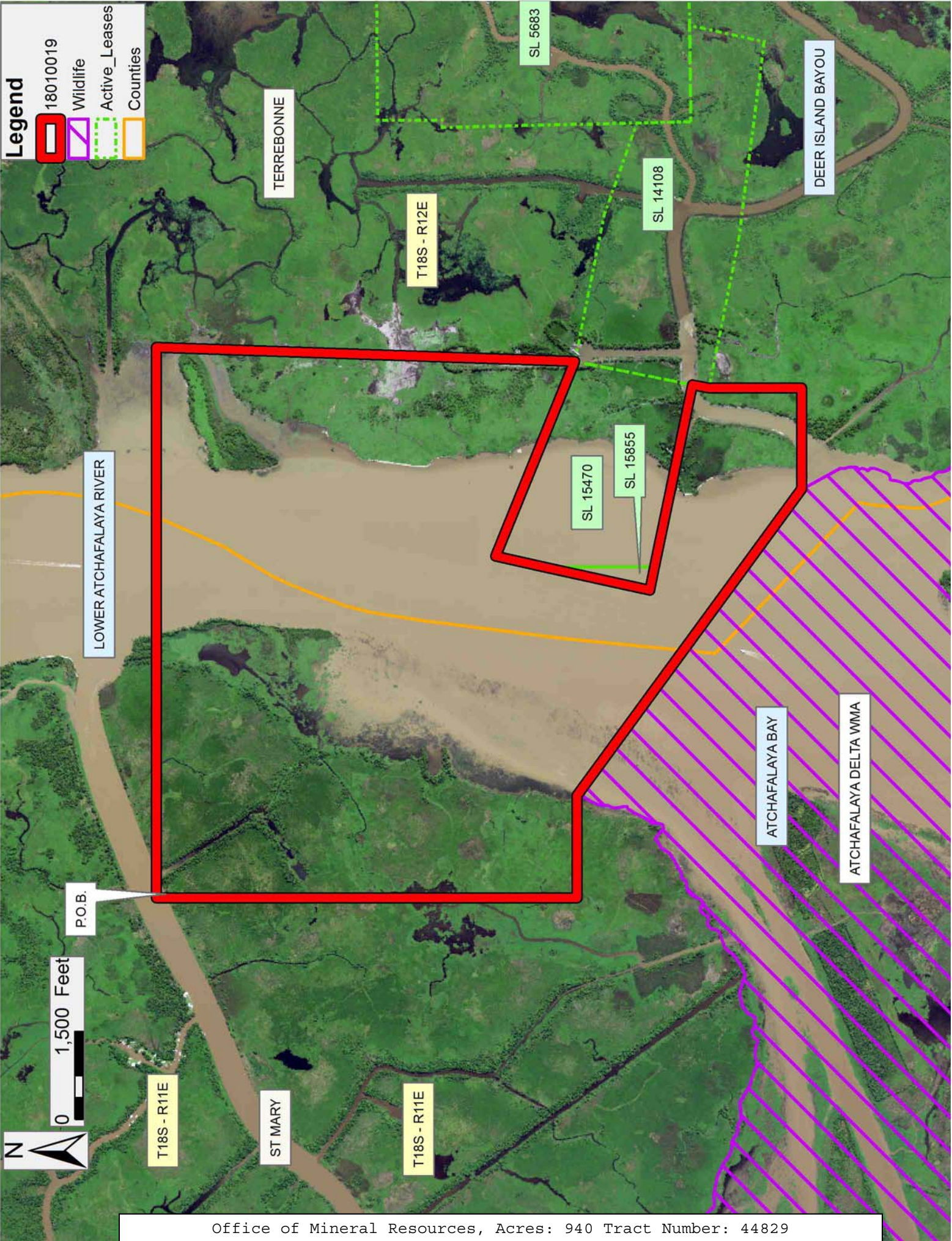
NOTE: The above description of the Tract nominated for the purpose of acquiring a mineral lease or a geophysical agreement has been provided and corrected, where required, exclusively by the nominating party. Any mineral lease or geophysical agreement selected from this Tract and awarded by the Louisiana State Mineral and Energy Board shall be without warranty of any kind, either express, implied or statutory including, but not limited to, title or the implied warranties of merchantability and fitness for a particular purpose.

An error or omission in the nominating party's Tract description may require that a State mineral lease or geophysical agreement be modified, canceled or abrogated due to the existence of conflicting leases, operating agreements, private claims or other future obligations or conditions within the Tract described. In such case, however, the Louisiana State Mineral and Energy Board shall not be obligated to refund any consideration paid by the Lessee prior to such modification, cancellation or abrogation including, but not limited to, bonuses, rentals and royalties.

NOTE: The State of Louisiana does hereby reserve, and this lease shall be subject to, the imprescriptible right of surface use in the nature of a servitude in favor of the Department of Natural Resources, including its Offices and Commissions, for the sole purpose of implementing, constructing, servicing and maintaining approved coastal zone management and/or restoration projects. Utilization of any and all rights derived under this lease by the mineral lessee, its agents, successors or assigns, shall not interfere with nor hinder the reasonable surface use by the Department of Natural Resources, its Offices or Commissions, as herein above reserved.

Applicant: ODELL CROSS

Bidder	Cash Payment	Price/Acre	Rental	Oil	Gas	Other



Legend

- 18010019
- Wildlife
- Active_Leases
- Countries

LOWER ATCHAFALAYA RIVER

P.O.B.

0 1,500 Feet



T18S - R11E

ST MARY

T18S - R11E

T18S - R12E

TERREBONNE

SL 14108

SL 5683

DEER ISLAND BAYOU

SL 15470

SL 15855

ATCHAFALAYA BAY

ATCHAFALAYA DELTA WMA

TRACT 44830 - Terrebonne Parish, Louisiana

All of the lands now or formerly constituting the beds and bottoms of all water bodies of every nature and description as to which title is vested in the State of Louisiana, together with all islands arising therein and other lands formed by accretion or by reliction, where allowed by law, excepting tax adjudicated lands, and not presently under mineral lease on January 10, 2018, situated in Terrebonne Parish, Louisiana, and more particularly described as follows: Beginning at a point having Coordinates of X = 2,083,544.14 and Y = 236,714.30; thence East 18,480.00 feet to a point having Coordinates of X = 2,102,024.14 and Y = 236,714.30; thence South 13,535.82 feet to point on the Northern boundary of State Lease No. 21677 having Coordinates of X = 2,102,024.14 and Y = 223,178.48, said point also being the Northernmost point on State Lease No. 21676; thence along the boundary of said State Lease No. 21676 the following courses: South 52 degrees 27 minutes 09 seconds West 1,851.73 feet to a point having Coordinates of X = 2,100,556.00 and Y = 222,050.00, South 53 degrees 39 minutes 46 seconds West 1,032.85 feet to a point having Coordinates of X = 2,099,724.00 and Y = 221,438.00, South 44 degrees 55 minutes 52 seconds East 1,178.04 feet to a point having Coordinates of X = 2,100,556.00 and Y = 220,604.00, South 58 degrees 24 minutes 37 seconds East 847.60 feet to a point having Coordinates of X = 2,101,278.00 and Y = 220,160.00, South 78 degrees 36 minutes 39 seconds East 283.58 feet to a point having Coordinates of X = 2,101,556.00 and Y = 220,104.00, North 44 degrees 21 minutes 56 seconds East 669.50 feet to a point having Coordinates of X = 2,102,024.14 and Y = 220,585.62; thence South 2,348.32 feet to a point having Coordinates of X = 2,102,024.14 and Y = 218,234.30; thence West 18,480.00 feet to a point having Coordinates of X = 2,083,544.14 and Y = 218,234.30; thence North 18,480.00 feet to the point of beginning, containing approximately **2,331 acres**, all as more particularly outlined on a plat on file in the Office of Mineral Resources, Department of Natural Resources. All bearings, distances and coordinates are based on Louisiana Coordinate System of 1927, (North or South Zone), where applicable.

NOTE: The above description of the Tract nominated for the purpose of acquiring a mineral lease or a geophysical agreement has been provided and corrected, where required, exclusively by the nominating party. Any mineral lease or geophysical agreement selected from this Tract and awarded by the Louisiana State Mineral and Energy Board shall be without warranty of any kind, either express, implied or statutory including, but not limited to, title or the implied warranties of merchantability and fitness for a particular purpose.

An error or omission in the nominating party's Tract description may require that a State mineral lease or geophysical agreement be modified, canceled or abrogated due to the existence of conflicting leases, operating agreements, private claims or other future obligations or conditions within the Tract described. In such case, however, the Louisiana State Mineral and Energy Board shall not be obligated to refund

any consideration paid by the Lessee prior to such modification, cancellation or abrogation including, but not limited to, bonuses, rentals and royalties.

NOTE: The State of Louisiana does hereby reserve, and this lease shall be subject to, the imprescriptible right of surface use in the nature of a servitude in favor of the Department of Natural Resources, including its Offices and Commissions, for the sole purpose of implementing, constructing, servicing and maintaining approved coastal zone management and/or restoration projects. Utilization of any and all rights derived under this lease by the mineral lessee, its agents, successors or assigns, shall not interfere with nor hinder the reasonable surface use by the Department of Natural Resources, its Offices or Commissions, as herein above reserved.

NOTE: This tract is located in an area designated by the Louisiana Legislature or the Wildlife and Fisheries Commission as a Public Oyster Seed Ground or Reservation. Surface activity within the boundaries of these designated Public Oyster Seed Grounds or Reservations is prohibited.

Applicant: ACADIAN LAND SERVICES, L.L.C.

Bidder	Cash Payment	Price/Acre	Rental	Oil	Gas	Other

Legend

18010028
Active_Leases



TRACT 44831 - Terrebonne Parish, Louisiana

All of the lands now or formerly constituting the beds and bottoms of all water bodies of every nature and description as to which title is vested in the State of Louisiana, together with all islands arising therein and other lands formed by accretion or by reliction, where allowed by law, excepting tax adjudicated lands, and not presently under mineral lease on January 10, 2018, situated in Terrebonne Parish, Louisiana, and more particularly described as follows: Beginning at a point having Coordinates of X = 2,102,024.14 and Y = 236,714.30; thence East 10,945.73 feet to a point having Coordinates of X = 2,112,969.86 and Y = 236,714.30; thence South 6,972.24 feet to the Northeast corner of State Lease No. 21658, also being the Northwest corner of State Lease No. 21629 having Coordinates of X = 2,112,969.86 and Y = 229,742.05; thence along the boundary of said State Lease No. 21628 the following courses: South 87 degrees 58 minutes 45 seconds West 199.99 feet to a point having Coordinates of X = 2,112,770.00 and Y = 229,735.00, South 84 degrees 28 minutes 55 seconds West 2,308.70 feet to a point having Coordinates of X = 2,110,472.00 and Y = 229,513.00, South 71 degrees 58 minutes 49 seconds West 3,533.31 feet to a point having Coordinates of X = 2,107,112.00 and Y = 228,420.00, South 47 degrees 43 minutes 13 seconds West 2,592.35 feet to a point having Coordinates of X = 2,105,194.00 and Y = 226,676.00, and South 43 degrees 33 minutes 37 seconds West 2,645.41 feet to a point on the Southwestern boundary of said State Lease No. 21628, also being the Northwest corner of State Lease No. 21677 having Coordinates of X = 2,103,371.00 and Y = 224,759.00; thence along the Western boundary of said State Lease No. 21677 the following courses: South 36 degrees 51 minutes 46 seconds West 1,608.60 feet to a point having Coordinates of X = 2,102,406.00 and Y = 223,472.00, and South 52 degrees 27 minutes 09 seconds West 481.64 feet to a point on the Northwest corner of said State Lease No. 21677, also being the Northeast corner of State Lease No. 21676 to a point having Coordinates of X = 2,102,024.14 and Y = 223,178.48; thence North 13,535.82 feet to the point of beginning, containing approximately **1,652 acres**, all as more particularly outlined on a plat on file in the Office of Mineral Resources, Department of Natural Resources. All bearings, distances and coordinates are based on Louisiana Coordinate System of 1927, (North or South Zone), where applicable.

NOTE: The above description of the Tract nominated for the purpose of acquiring a mineral lease or a geophysical agreement has been provided and corrected, where required, exclusively by the nominating party. Any mineral lease or geophysical agreement selected from this Tract and awarded by the Louisiana State Mineral and Energy Board shall be without warranty of any kind, either express, implied or statutory including, but not limited to, title or the implied warranties of merchantability and fitness for a particular purpose.

An error or omission in the nominating party's Tract description may require that a State mineral lease or geophysical agreement be modified, canceled or abrogated due to the existence of conflicting leases,

operating agreements, private claims or other future obligations or conditions within the Tract described. In such case, however, the Louisiana State Mineral and Energy Board shall not be obligated to refund any consideration paid by the Lessee prior to such modification, cancellation or abrogation including, but not limited to, bonuses, rentals and royalties.

NOTE: The State of Louisiana does hereby reserve, and this lease shall be subject to, the imprescriptible right of surface use in the nature of a servitude in favor of the Department of Natural Resources, including its Offices and Commissions, for the sole purpose of implementing, constructing, servicing and maintaining approved coastal zone management and/or restoration projects. Utilization of any and all rights derived under this lease by the mineral lessee, its agents, successors or assigns, shall not interfere with nor hinder the reasonable surface use by the Department of Natural Resources, its Offices or Commissions, as herein above reserved.

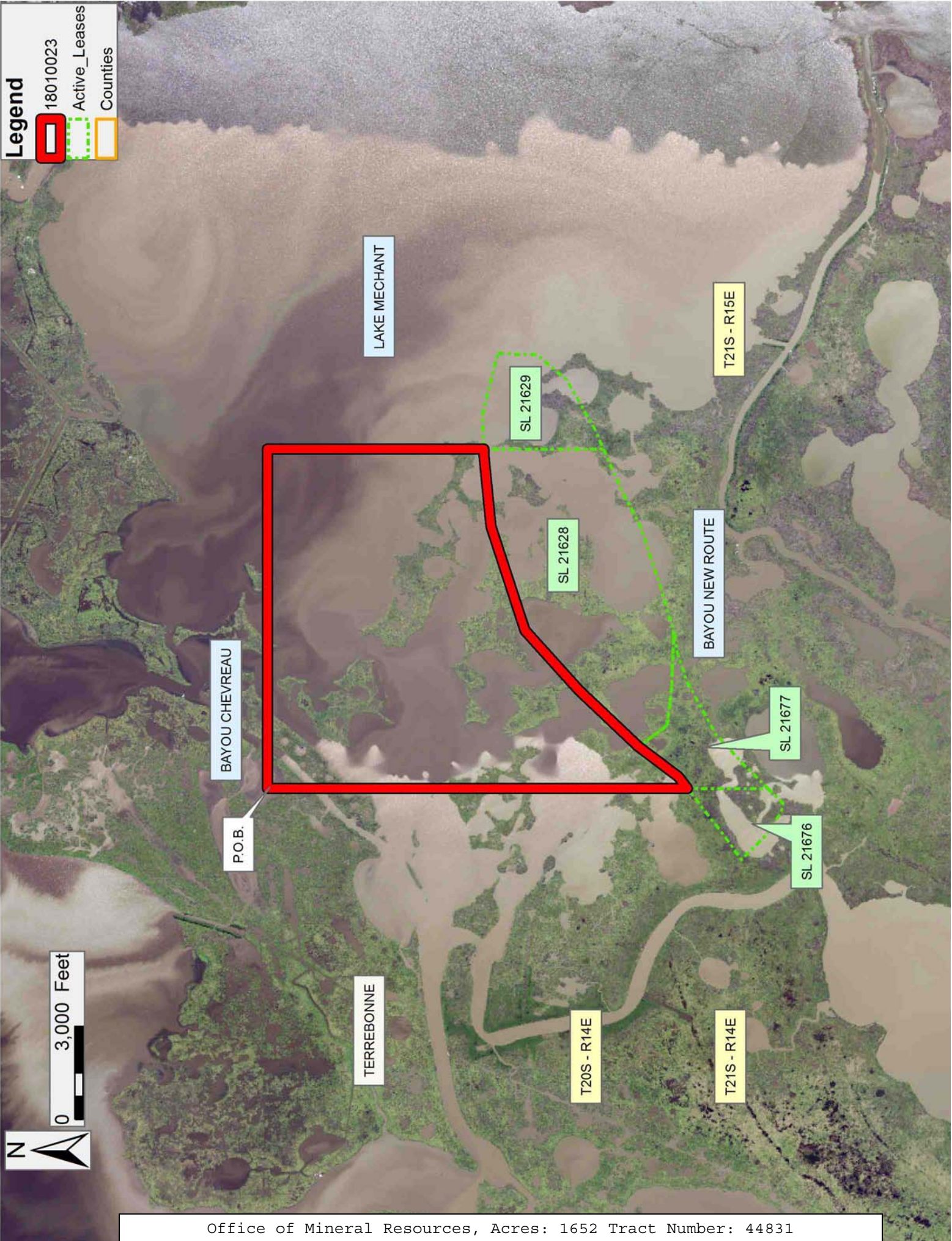
NOTE: This tract is located in an area designated by the Louisiana Legislature or the Wildlife and Fisheries Commission as a Public Oyster Seed Ground or Reservation. Surface activity within the boundaries of these designated Public Oyster Seed Grounds or Reservations is prohibited.

Applicant: ACADIAN LAND SERVICES, L.L.C.

Bidder	Cash Payment	Price/Acre	Rental	Oil	Gas	Other

Legend

- 18010023
- Active_Leases
- Counties



TRACT 44832 - Terrebonne Parish, Louisiana

All of the lands now or formerly constituting the beds and bottoms of all water bodies of every nature and description as to which title is vested in the State of Louisiana, together with all islands arising therein and other lands formed by accretion or by reliction, where allowed by law, excepting tax adjudicated lands, and not presently under mineral lease on January 10, 2018, situated in Terrebonne Parish, Louisiana, and more particularly described as follows: Beginning at a point having Coordinates of X = 2,112,969.86 and Y = 236,714.30; thence East 7,534.27 feet to a point having Coordinates of X = 2,120,504.14 and Y = 236,714.30; thence South 18,480.00 feet to a point having Coordinates of X = 2,120,504.14 and Y = 218,234.30; thence West 7,534.27 feet to a point having Coordinates of X = 2,112,969.86 and Y = 218,234.30; thence North 7,653.76 feet to a point on the Southeast corner of State Lease No. 21628 and Southwest corner of State Lease No. 21629 having Coordinates of X = 2,112,969.86 and Y = 225,888.05; thence along said State Lease No. 21629 the following courses: North 66 degrees 09 minutes 52 seconds East 734.81 feet to a point having Coordinates of X = 2,113,642.00 and Y = 226,185.00, thence North 60 degrees 16 minutes 01 second East 1,788.46 feet to a point having Coordinates of X = 2,115,195.00 and Y = 227,072.00, North 40 degrees 21 minutes 27 seconds East 1,249.31 feet to a point having Coordinates of X = 2,116,004.00 and Y = 228,024.00, North 02 degrees 07 minutes 22 seconds East 1,268.87 feet to a point having Coordinates of X = 2,116,051.00 and Y = 229,292.00, North 75 degrees 53 minutes 16 seconds West 2,009.65 feet to a point having Coordinates of X = 2,114,102.00 and Y = 229,782.00, South 87 degrees 58 minutes 45 seconds West 1,132.84 feet to a point on the Northwest corner of said State Lease No. 21629 and the Northeast corner of said State Lease No. 21629 having Coordinates of X = 2,112,969.86 and Y = 229,742.05; thence North 6,972.24 feet to the point of beginning, containing approximately **2,393 acres**, all as more particularly outlined on a plat on file in the Office of Mineral Resources, Department of Natural Resources. All bearings, distances and coordinates are based on Louisiana Coordinate System of 1927, (North or South Zone), where applicable.

NOTE: The above description of the Tract nominated for the purpose of acquiring a mineral lease or a geophysical agreement has been provided and corrected, where required, exclusively by the nominating party. Any mineral lease or geophysical agreement selected from this Tract and awarded by the Louisiana State Mineral and Energy Board shall be without warranty of any kind, either express, implied or statutory including, but not limited to, title or the implied warranties of merchantability and fitness for a particular purpose.

An error or omission in the nominating party's Tract description may require that a State mineral lease or geophysical agreement be modified, canceled or abrogated due to the existence of conflicting leases, operating agreements, private claims or other future obligations or conditions within the Tract described. In such case, however, the Louisiana State Mineral and Energy Board shall not be obligated to refund

any consideration paid by the Lessee prior to such modification, cancellation or abrogation including, but not limited to, bonuses, rentals and royalties.

NOTE: The State of Louisiana does hereby reserve, and this lease shall be subject to, the imprescriptible right of surface use in the nature of a servitude in favor of the Department of Natural Resources, including its Offices and Commissions, for the sole purpose of implementing, constructing, servicing and maintaining approved coastal zone management and/or restoration projects. Utilization of any and all rights derived under this lease by the mineral lessee, its agents, successors or assigns, shall not interfere with nor hinder the reasonable surface use by the Department of Natural Resources, its Offices or Commissions, as herein above reserved.

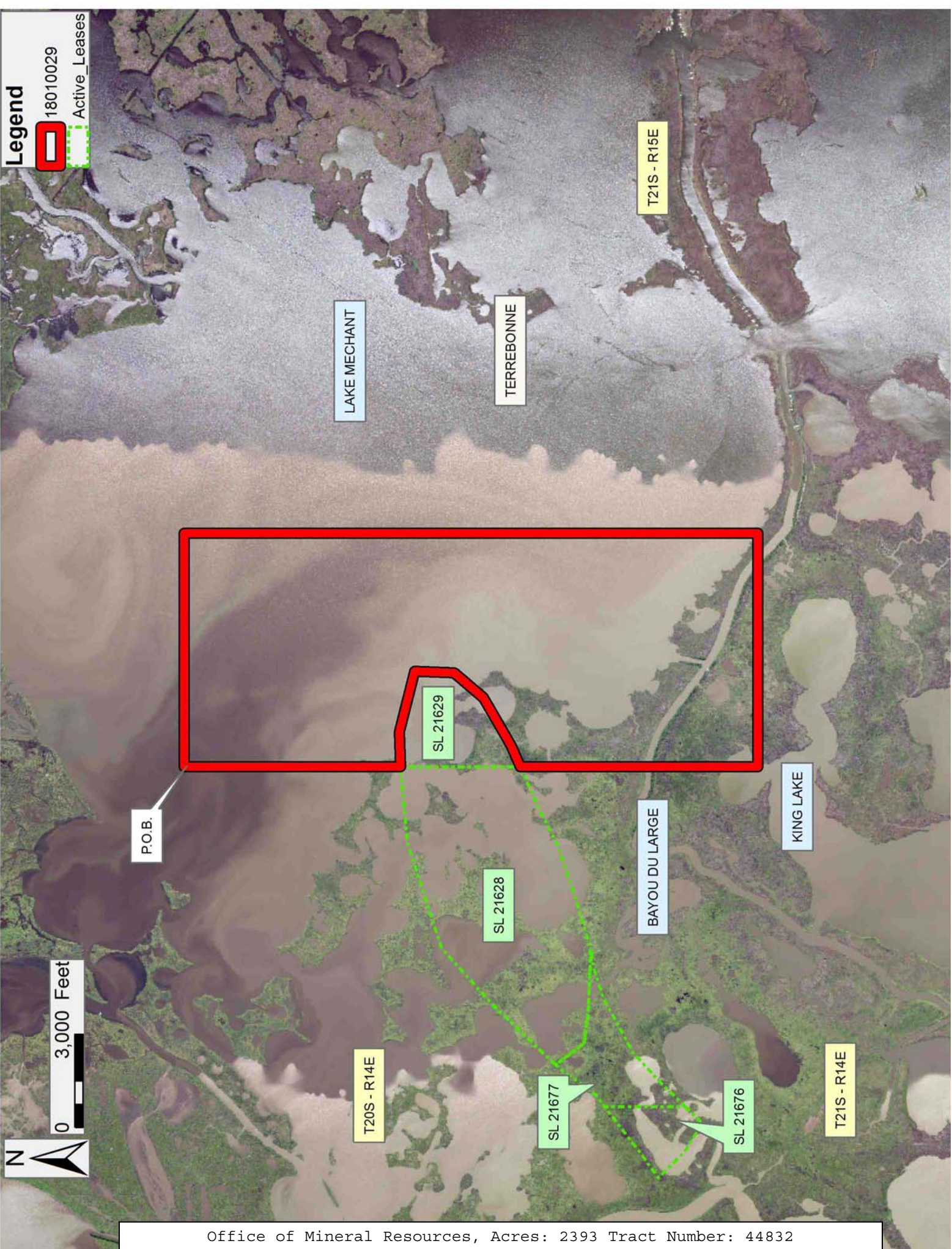
NOTE: This tract is located in an area designated by the Louisiana Legislature or the Wildlife and Fisheries Commission as a Public Oyster Seed Ground or Reservation. Surface activity within the boundaries of these designated Public Oyster Seed Grounds or Reservations is prohibited.

Applicant: ACADIAN LAND SERVICES, L.L.C.

Bidder	Cash Payment	Price/Acre	Rental	Oil	Gas	Other

Legend

- 18010029
- Active_Leases



TRACT 44833 - Terrebonne Parish, Louisiana

All of the lands now or formerly constituting the beds and bottoms of all water bodies of every nature and description as to which title is vested in the State of Louisiana, together with all islands arising therein and other lands formed by accretion or by reliction, where allowed by law, excepting tax adjudicated lands, and not presently under mineral lease on January 10, 2018, situated in Terrebonne Parish, Louisiana, and more particularly described as follows: Beginning at the Southern common point of State Lease No. 21628 and State Lease No. 21629 having Coordinates of X = 2,112,969.86 and Y = 225,888.05; thence South 7,653.76 feet to a point having Coordinates of X = 2,112,969.86 and Y = 218,234.30; thence East 7,534.27 feet to a point having Coordinates of X = 2,120,504.14 and Y = 218,234.30; thence South 9,158.40 feet to a point having Coordinates of X = 2,120,504.14 and Y = 209,075.90; thence West approximately 16,311 feet to a point on the Eastern boundary of State Lease No. 725, as amended; thence North approximately 2,281 feet along the Eastern boundary of said State Lease No. 725, as amended, to its Northeast corner; thence West approximately 2,169 feet along the Northern boundary of said State Lease No 725, as amended, to a point; thence North approximately 9,225 feet to a point on the Southeast corner of State Lease No. 21676 also being the Southwest corner of State Lease No. 21677 having Coordinates of X = 2,102,024.14 and Y = 220,582.62; thence along the Eastern boundary of said State Lease No. 21677 the following courses: North 44 degrees 21 minutes 55 seconds East 1,118.18 feet to a point having Coordinates of X = 2,102,806.00 and Y = 221,382.00, North 47 degrees 31 minutes 18 seconds East 1,317.91 to a point having Coordinates of X = 2,103,778.00 and Y = 222,272.00, North 61 degrees 16 minutes 06 seconds East 1,963.78 to a point having Coordinates of X = 2,105,500.00 and Y = 223,216.00, North 72 degrees 33 minutes 32 seconds East 1,020.94 to a point having Coordinates of X = 2,106,474.00 and Y = 223,522.00, and North 81 degrees 01 minutes 21 seconds East 621.62 to a point on the Northeasternmost corner of said State Lease No. 21677 also being a point on the Southeastern boundary of State Lease No. 21628 having Coordinates of X = 2,107,088.00 and Y = 223,619.00; thence along the boundary of said State Lease No. 21628 the following: North 73 degrees 15 minutes 34 seconds East 1,732.42 feet to a point having Coordinates of X = 2,108,747.00 and Y = 224,118.00, North 71 degrees 28 minutes 29 seconds East 1,806.61 feet to a point having Coordinates of X = 2,110,460.00 and Y = 224,692.00, North 62 degrees 34 minutes 07 seconds East 1,272.02 feet to a point having Coordinates of X = 2,111,589.00 and Y = 225,278.00, and North 66 degrees 09 minutes 52 seconds East 1,509.62 feet to the point of beginning, containing approximately **2,174 acres**, all as more particularly outlined on a plat on file in the Office of Mineral Resources, Department of Natural Resources. All bearings, distances and coordinates are based on Louisiana Coordinate System of 1927, (North or South Zone), where applicable.

NOTE: The above description of the Tract nominated for the purpose of acquiring a mineral lease or a geophysical agreement has been provided and corrected, where required, exclusively by the nominating party. Any

mineral lease or geophysical agreement selected from this Tract and awarded by the Louisiana State Mineral and Energy Board shall be without warranty of any kind, either express, implied or statutory including, but not limited to, title or the implied warranties of merchantability and fitness for a particular purpose.

An error or omission in the nominating party's Tract description may require that a State mineral lease or geophysical agreement be modified, canceled or abrogated due to the existence of conflicting leases, operating agreements, private claims or other future obligations or conditions within the Tract described. In such case, however, the Louisiana State Mineral and Energy Board shall not be obligated to refund any consideration paid by the Lessee prior to such modification, cancellation or abrogation including, but not limited to, bonuses, rentals and royalties.

NOTE: The State of Louisiana does hereby reserve, and this lease shall be subject to, the imprescriptible right of surface use in the nature of a servitude in favor of the Department of Natural Resources, including its Offices and Commissions, for the sole purpose of implementing, constructing, servicing and maintaining approved coastal zone management and/or restoration projects. Utilization of any and all rights derived under this lease by the mineral lessee, its agents, successors or assigns, shall not interfere with nor hinder the reasonable surface use by the Department of Natural Resources, its Offices or Commissions, as herein above reserved.

NOTE: This tract is located in an area designated by the Louisiana Legislature or the Wildlife and Fisheries Commission as a Public Oyster Seed Ground or Reservation. Surface activity within the boundaries of these designated Public Oyster Seed Grounds or Reservations is prohibited.

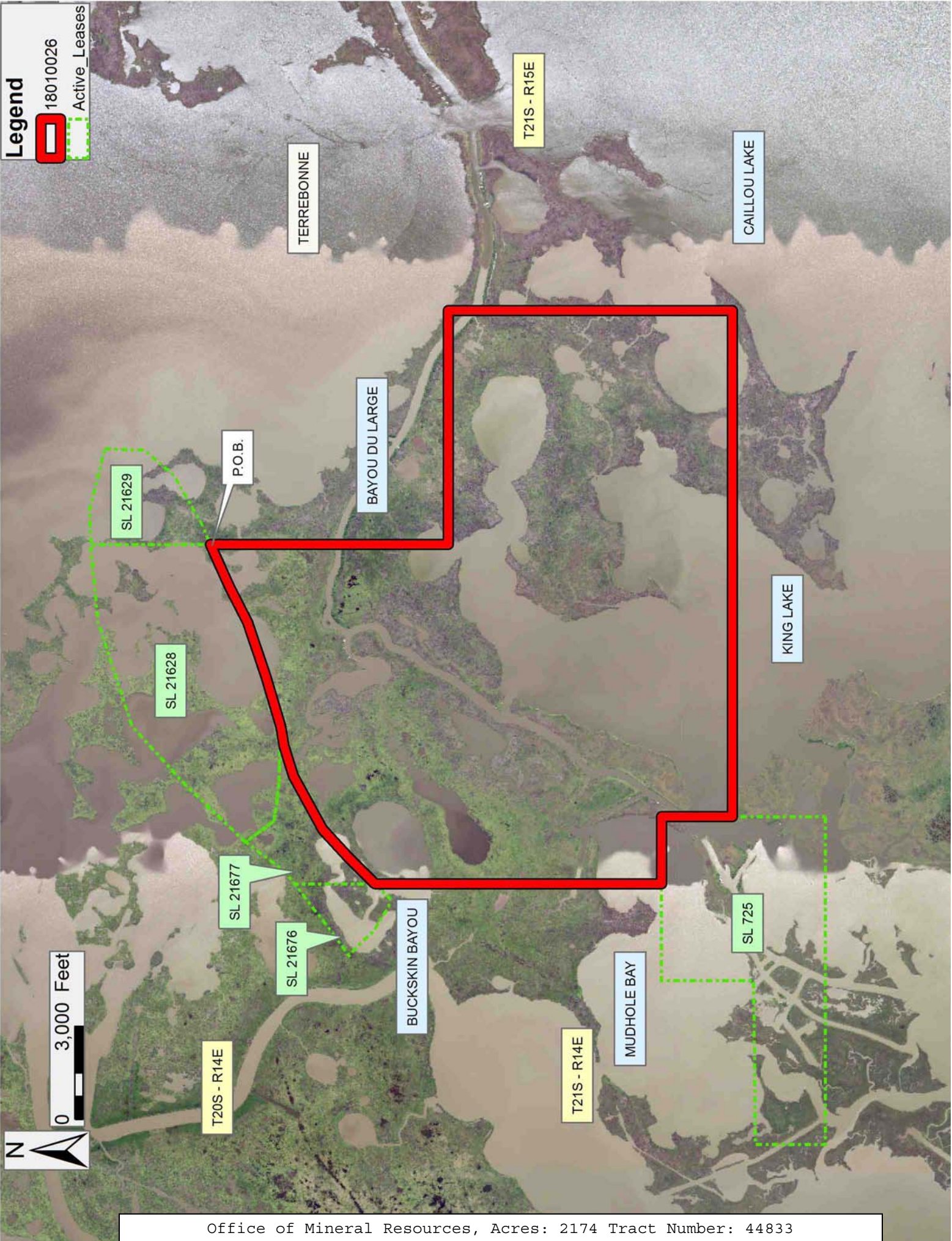
Applicant: ACADIAN LAND SERVICES, L.L.C.

Bidder	Cash Payment	Price/Acre	Rental	Oil	Gas	Other

Legend

18010026

Active_Leases



TRACT 44834 - Terrebonne Parish, Louisiana

All of the lands now or formerly constituting the beds and bottoms of all water bodies of every nature and description as to which title is vested in the State of Louisiana, together with all islands arising therein and other lands formed by accretion or by reliction, where allowed by law, excepting tax adjudicated lands, and not presently under mineral lease on January 10, 2018, situated in Terrebonne Parish, Louisiana, and more particularly described as follows: Beginning at a point having Coordinates of X = 2,083,544.14 and Y = 218,234.30; thence East 18,480.00 feet to a point having Coordinates of X = 2,102,024.14 and Y = 218,234.30; thence South approximately 6,877 feet to a point on the Northern boundary of State Lease No. 725, as amended; thence along the boundary of said State Lease No. 725, as amended, the following courses: West approximately 3,111 feet to a point, South 2,966.19 feet to a point, South 89 degrees 24 minutes 50 seconds West 5,280.28 feet to its Westernmost Northwest corner, and South approximately 229 feet along the most Western boundary of said State Lease No. 725, as amended, to a point; thence West approximately 10,089 feet to a point having Coordinates of X = 2,083,544.14 and Y = 208,107.84; thence North 10,126.45 feet to the point of beginning, **LESS AND EXCEPT** any right, title, and interest in lands owned by and not under lease from the State of Louisiana, on behalf of the Terrebonne Parish School Board, situated in Section 16, Township 21 South, Range 14 East, Terrebonne Parish, Louisiana, contained within the above described tract, containing approximately **2,076 acres**, all as more particularly outlined on a plat on file in the Office of Mineral Resources, Department of Natural Resources. All bearings, distances and coordinates are based on Louisiana Coordinate System of 1927, (North or South Zone), where applicable.

NOTE: The above description of the Tract nominated for the purpose of acquiring a mineral lease or a geophysical agreement has been provided and corrected, where required, exclusively by the nominating party. Any mineral lease or geophysical agreement selected from this Tract and awarded by the Louisiana State Mineral and Energy Board shall be without warranty of any kind, either express, implied or statutory including, but not limited to, title or the implied warranties of merchantability and fitness for a particular purpose.

An error or omission in the nominating party's Tract description may require that a State mineral lease or geophysical agreement be modified, canceled or abrogated due to the existence of conflicting leases, operating agreements, private claims or other future obligations or conditions within the Tract described. In such case, however, the Louisiana State Mineral and Energy Board shall not be obligated to refund any consideration paid by the Lessee prior to such modification, cancellation or abrogation including, but not limited to, bonuses, rentals and royalties.

NOTE: The State of Louisiana does hereby reserve, and this lease shall be subject to, the imprescriptible right of surface use in the nature of a

servitude in favor of the Department of Natural Resources, including its Offices and Commissions, for the sole purpose of implementing, constructing, servicing and maintaining approved coastal zone management and/or restoration projects. Utilization of any and all rights derived under this lease by the mineral lessee, its agents, successors or assigns, shall not interfere with nor hinder the reasonable surface use by the Department of Natural Resources, its Offices or Commissions, as herein above reserved.

NOTE: This tract is located in an area designated by the Louisiana Legislature or the Wildlife and Fisheries Commission as a Public Oyster Seed Ground or Reservation. Surface activity within the boundaries of these designated Public Oyster Seed Grounds or Reservations is prohibited.

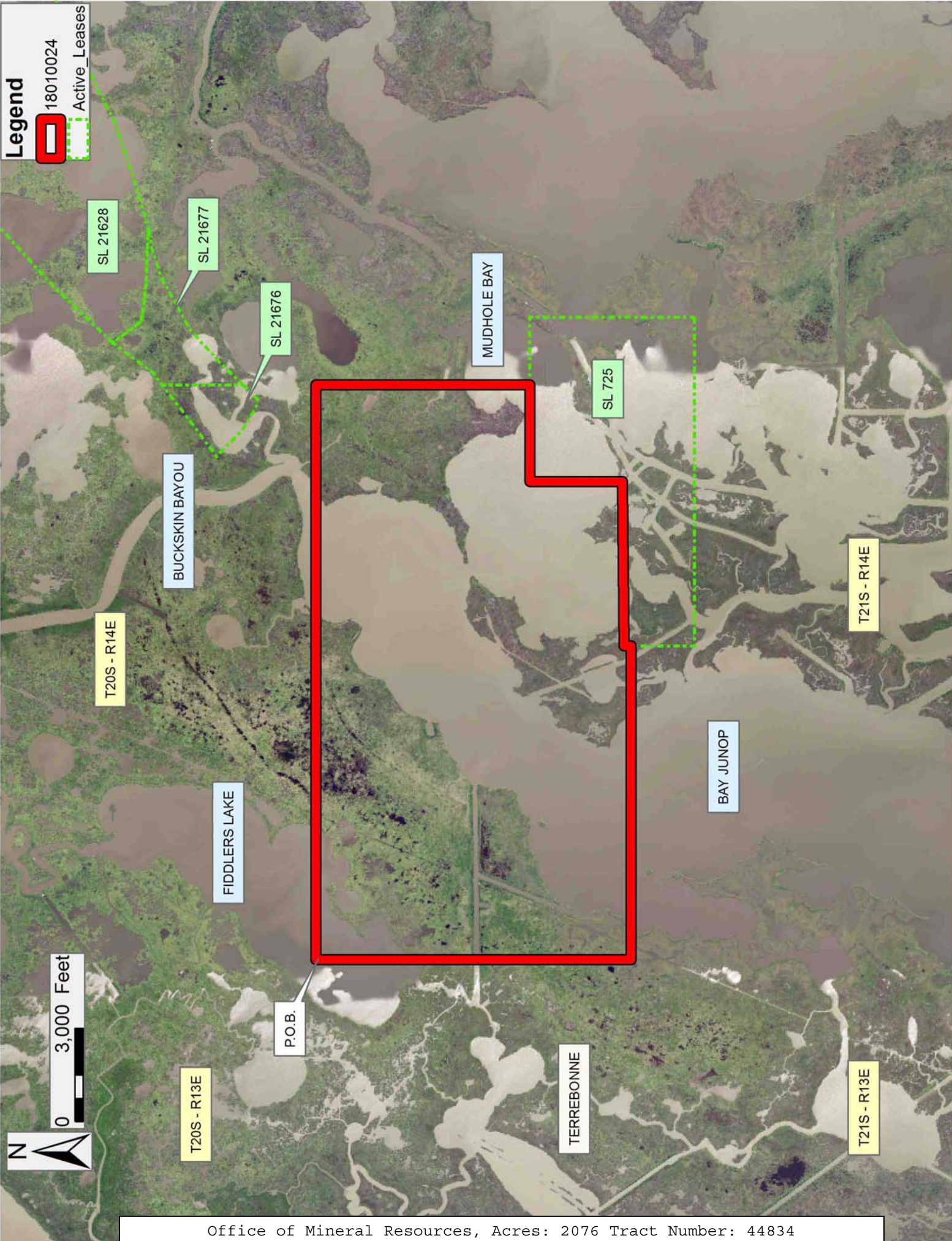
Applicant: ACADIAN LAND SERVICES, L.L.C.

Bidder	Cash Payment	Price/Acre	Rental	Oil	Gas	Other

Legend

18010024

Active_Leases



0 3,000 Feet

N

TRACT 44835 - Terrebonne Parish, Louisiana

All of the lands now or formerly constituting the beds and bottoms of all water bodies of every nature and description as to which title is vested in the State of Louisiana, together with all islands arising therein and other lands formed by accretion or by reliction, where allowed by law, excepting tax adjudicated lands, and not presently under mineral lease on January 10, 2018, situated in Terrebonne Parish, Louisiana, and more particularly described as follows: Beginning at a point having Coordinates of X = 2,083,544.14 and Y = 208,107.84; thence East approximately 10,089 feet to a point on the most Western boundary of State Lease No. 725, as amended; thence South approximately 2,030 feet along the boundary of said State Lease No. 725, as amended, to its Southwest corner; thence East approximately 8,391 feet along the Southern Boundary of said State Lease No. 725, as amended, to a point; thence South approximately 6,323 feet to a point having Coordinates of X = 2,102,024.14 and Y = 199,754.30; thence West 18,480.00 feet to a point having Coordinates of X = 2,083,544.14 and Y = 199,754.30; thence North 8,353.55 feet to the point of beginning, containing approximately **2,110 acres**, all as more particularly outlined on a plat on file in the Office of Mineral Resources, Department of Natural Resources. All bearings, distances and coordinates are based on Louisiana Coordinate System of 1927, (North or South Zone), where applicable.

NOTE: The above description of the Tract nominated for the purpose of acquiring a mineral lease or a geophysical agreement has been provided and corrected, where required, exclusively by the nominating party. Any mineral lease or geophysical agreement selected from this Tract and awarded by the Louisiana State Mineral and Energy Board shall be without warranty of any kind, either express, implied or statutory including, but not limited to, title or the implied warranties of merchantability and fitness for a particular purpose.

An error or omission in the nominating party's Tract description may require that a State mineral lease or geophysical agreement be modified, canceled or abrogated due to the existence of conflicting leases, operating agreements, private claims or other future obligations or conditions within the Tract described. In such case, however, the Louisiana State Mineral and Energy Board shall not be obligated to refund any consideration paid by the Lessee prior to such modification, cancellation or abrogation including, but not limited to, bonuses, rentals and royalties.

NOTE: The State of Louisiana does hereby reserve, and this lease shall be subject to, the imprescriptible right of surface use in the nature of a servitude in favor of the Department of Natural Resources, including its Offices and Commissions, for the sole purpose of implementing, constructing, servicing and maintaining approved coastal zone management and/or restoration projects. Utilization of any and all rights derived under this lease by the mineral lessee, its agents, successors or assigns, shall not interfere with nor hinder the reasonable surface use by the

Department of Natural Resources, its Offices or Commissions, as herein above reserved.

NOTE: This tract is located in an area designated by the Louisiana Legislature or the Wildlife and Fisheries Commission as a Public Oyster Seed Ground or Reservation. Surface activity within the boundaries of these designated Public Oyster Seed Grounds or Reservations is prohibited.

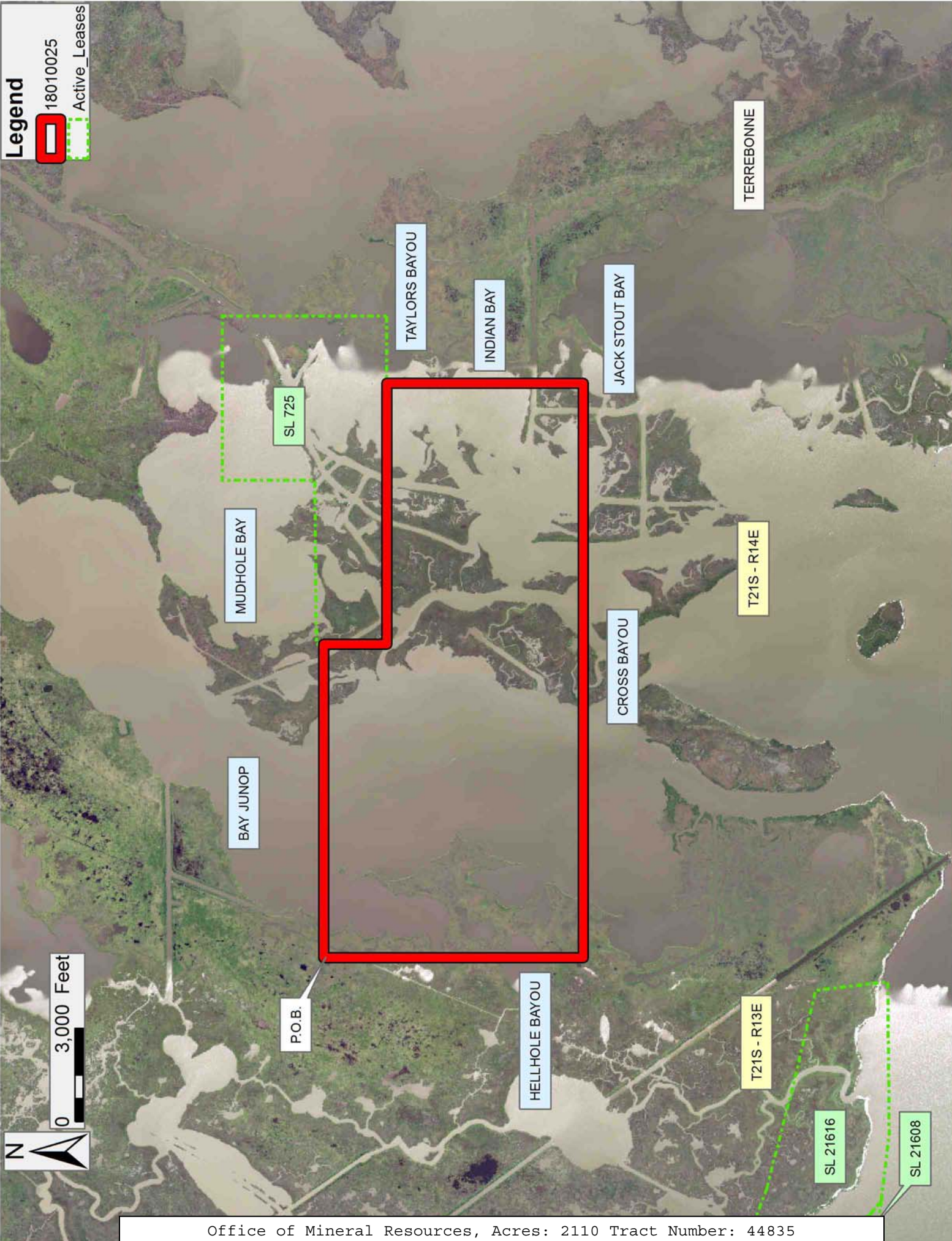
Applicant: ACADIAN LAND SERVICES, L.L.C.

Bidder	Cash Payment	Price/Acre	Rental	Oil	Gas	Other

Legend

18010025

Active_Leases



TRACT 44836 - Terrebonne Parish, Louisiana

All of the lands now or formerly constituting the beds and bottoms of all water bodies of every nature and description as to which title is vested in the State of Louisiana, together with all islands arising therein and other lands formed by accretion or by reliction, where allowed by law, excepting tax adjudicated lands, and not presently under mineral lease on January 10, 2018, situated in Terrebonne Parish, Louisiana, and more particularly described as follows: Beginning at a point having Coordinates of X = 2,120,504.14 and Y = 209,075.90; thence South 9,321.61 feet to a point having Coordinates of X = 2,120,504.14 and Y = 199,754.30; thence West 18,480.00 feet to a point having Coordinates of X = 2,102,024.14 and Y = 199,754.30; thence North approximately 6,323 feet to a point on the Southern boundary of State Lease No. 725, as amended; thence East approximately 2,169 feet along the Southern boundary of said State Lease No. 725, as amended, to its Southeast corner; thence North approximately 2,999 feet along the Eastern boundary of State Lease No. 725, as amended, to a point; thence East approximately 16,311 feet to the point of beginning, containing approximately **2,214 acres**, all as more particularly outlined on a plat on file in the Office of Mineral Resources, Department of Natural Resources. All bearings, distances and coordinates are based on Louisiana Coordinate System of 1927, (North or South Zone), where applicable.

NOTE: The above description of the Tract nominated for the purpose of acquiring a mineral lease or a geophysical agreement has been provided and corrected, where required, exclusively by the nominating party. Any mineral lease or geophysical agreement selected from this Tract and awarded by the Louisiana State Mineral and Energy Board shall be without warranty of any kind, either express, implied or statutory including, but not limited to, title or the implied warranties of merchantability and fitness for a particular purpose.

An error or omission in the nominating party's Tract description may require that a State mineral lease or geophysical agreement be modified, canceled or abrogated due to the existence of conflicting leases, operating agreements, private claims or other future obligations or conditions within the Tract described. In such case, however, the Louisiana State Mineral and Energy Board shall not be obligated to refund any consideration paid by the Lessee prior to such modification, cancellation or abrogation including, but not limited to, bonuses, rentals and royalties.

NOTE: The State of Louisiana does hereby reserve, and this lease shall be subject to, the imprescriptible right of surface use in the nature of a servitude in favor of the Department of Natural Resources, including its Offices and Commissions, for the sole purpose of implementing, constructing, servicing and maintaining approved coastal zone management and/or restoration projects. Utilization of any and all rights derived under this lease by the mineral lessee, its agents, successors or assigns,

shall not interfere with nor hinder the reasonable surface use by the Department of Natural Resources, its Offices or Commissions, as herein above reserved.

NOTE: This tract is located in an area designated by the Louisiana Legislature or the Wildlife and Fisheries Commission as a Public Oyster Seed Ground or Reservation. Surface activity within the boundaries of these designated Public Oyster Seed Grounds or Reservations is prohibited.

Applicant: ACADIAN LAND SERVICES, L.L.C.

Bidder	Cash Payment	Price/Acre	Rental	Oil	Gas	Other

Legend
18010027
Active_Leases

