

TRACT 44809 - Calcasieu Parish, Louisiana

All of the lands now or formerly constituting the beds and bottoms of all water bodies of every nature and description the title of which vests in the State of Louisiana, together with all islands arising therein and other lands formed by accretion or by reliction, where allowed by law, excepting tax adjudicated lands, and not presently under mineral lease on January 10, 2018, situated in Calcasieu Parish, Louisiana, and more particularly described as follows: Beginning at a point having Coordinates of X = 1,254,196.42 and Y = 607,116.86; thence along a curve to the right having a chord bearing and distance of South 38 degrees 41 minutes 13 seconds West 790.85 feet, a radius of 4,167.18 feet and arc length of 792.04 feet to a point having Coordinates of X = 1,253,702.09 and Y = 606,499.54; thence along a curve to the left having a chord bearing and distance of South 41 degrees 28 minutes 52 seconds West 1,460.30 feet, a radius of 8,901.68 feet and arc length of 1,461.94 feet to a point having Coordinates of X = 1,252,734.82 and Y = 605,405.52; thence South 36 degrees 21 minutes 07 seconds West 1,148.22 feet to a point having Coordinates of X = 1,252,054.22 and Y = 604,480.76; thence South 35 degrees 59 minutes 46 seconds West 1,595.41 feet to a point having Coordinates of X = 1,251,116.55 and Y = 603,189.98; thence along a curve to the right having a chord bearing and distance of South 59 degrees 37 minutes 43 seconds West 3,977.39 feet, a radius of 8,009.04 feet and arc length of 4,019.44 feet to a point having Coordinates of X = 1,247,685.00 and Y = 601,178.98; thence along a curve to the right having a chord bearing and distance of North 87 degrees 07 minutes 19 seconds West 2,748.47 feet, a radius of 22,750.88 feet and arc length of 2,750.14 feet to a point having Coordinates of X = 1,244,940.00 and Y = 601,316.98; thence along a curve to the left having a chord bearing and distance of North 83 degrees 59 minutes 38 seconds West 2,768.62 feet, a radius of 31,570.00 feet and arc length of 2,769.51 feet to a point having Coordinates of X = 1,242,186.57 and Y = 601,606.68; thence along a curve to the right having a chord bearing and distance of North 53 degrees 34 minutes 33 seconds East 4,613.02 feet, a radius of 29,314.25 feet and arc length of 4,617.79 feet to a point having Coordinates of X = 1,245,898.41 and Y = 604,345.70; thence along a curve to the left having a chord bearing and distance of North 45 degrees 07 minutes 48 seconds East 409.71 feet, a radius of 1,897.17 feet and arc length of 410.51 feet to a point having Coordinates of X = 1,246,188.78 and Y = 604,634.75; thence North 34 degrees 35 minutes 57 seconds East 945.35 feet to a point having Coordinates of X = 1,246,725.58 and Y = 605,412.91; thence along a curve to the right having a chord bearing and distance of North 63 degrees 48 minutes 59 seconds East 1,453.19 feet, a radius of 2,223.56 feet and arc length of 1,480.38 feet to a point having Coordinates of X = 1,248,029.65 and Y = 606,054.13; thence along a curve to the left having a chord bearing and distance of North 69 degrees 50 minutes 16 seconds East 1,597.41 feet, a radius of 8,248.00 feet and arc length of 1,599.91 feet to a point having Coordinates of X = 1,249,529.17 and Y = 606,604.72; thence along a curve to the right having a chord bearing and distance of South 87 degrees 11 minutes 07 seconds East 77.99 feet, a radius of 16,605.65 feet and arc length of 77.99 feet to a point having Coordinates

of X = 1,249,607.06 and Y = 606,600.89; thence South 89 degrees 59 minutes 21 seconds East 1,462.78 feet to a point having Coordinates of X = 1,251,069.84 and Y = 606,600.61; thence along a curve to the left having a chord bearing and distance of North 80 degrees 37 minutes 27 seconds East 3,168.91 feet, a radius of 10,758.27 feet and arc length of 3,180.48 feet to the point of beginning, More fully described as follows:

TRACT 1: That certain tract or parcel of land containing 2.834 acres, more or less, situated in Section 6, Township 9 South, Range 13 West, Calcasieu Parish, Louisiana, being depicted as Tract 9 on the Survey Plat of the Y-1 Sand Unit, as created by the State of Louisiana Commissioner of Conservation Order #1359-A-1, effective March 20, 1990, a copy of which is on file at the Louisiana Office of Conservation Office.

TRACT 2: That certain tract or parcel of land containing 0.988 acres, more or less, situated in Section 8, Township 9 South, Range 13 West, Calcasieu Parish, Louisiana, being depicted as Tract 9A on the Survey Plat of the Y-1 Sand Unit, as created by the State of Louisiana Commissioner of Conservation Order #1359-A-1, effective March 20, 1990, a copy of which is on file at the Louisiana Office of Conservation Office.

TRACT 3: That certain tract or parcel of land containing 0.081 acres, more or less, situated in Section 6, Township 9 South, Range 13 West, Calcasieu Parish, Louisiana, being depicted as Tract 9B on the Survey Plat of the Y-1 Sand Unit, as created by the State of Louisiana Commissioner of Conservation Order #1359-A-1, effective March 20, 1990, a copy of which is on file at the Louisiana Office of Conservation Office.

TRACT 4: That certain tract or parcel of land containing 3.074 acres, more or less, situated in Section 5, Township 9 South, Range 13 West, Calcasieu Parish, Louisiana, being depicted as Tract 9C on the Survey Plat of the Y-1 Sand Unit, as created by the State of Louisiana Commissioner of Conservation Order #1359-A-1, effective March 20, 1990, a copy of which is on file at the Louisiana Office of Conservation Office.

TRACT 5: That certain tract or parcel of land containing 4.19 acres, more or less, situated in Section 5, Township 9 South, Range 13 West, Calcasieu Parish, Louisiana, being depicted as Tract 12 on the Survey Plat of the Y-1 Sand Unit, as created by the State of Louisiana Commissioner of Conservation Order #1359-A-1, effective March 20, 1990, a copy of which is on file at the Louisiana Office of Conservation Office.

TRACT 6: That certain tract or parcel of land containing 0.374 acres, more or less, situated in Section 8, Township 9 South, Range 13 West, Calcasieu Parish, Louisiana, being depicted as Tract 12A on the Survey Plat of the Y-1 Sand Unit, as created by the State of Louisiana Commissioner of Conservation Order #1359-A-1, effective March 20, 1990, a copy of which is on file at the Louisiana Office of Conservation Office.

TRACT 7: That certain tract or parcel of land containing 0.451 acres, more or less, situated in Section 7, Township 9 South, Range 13 West, Calcasieu Parish, Louisiana, being depicted as Tract 26 on the Survey Plat of the Y-1 Sand Unit, as created by the State of Louisiana Commissioner of Conservation Order #1359-A-1, effective March 20, 1990, a copy of which is on file at the Louisiana Office of Conservation Office.

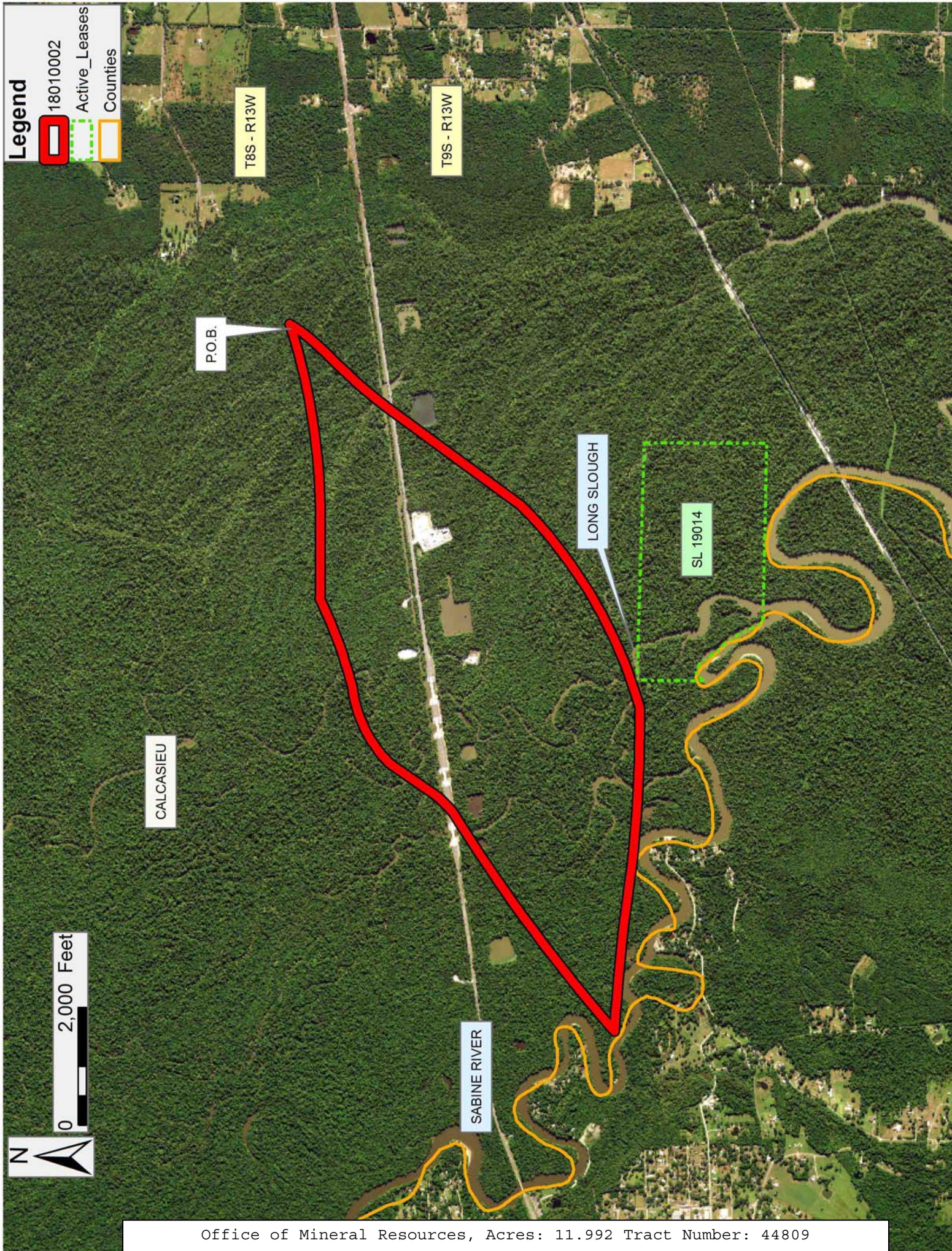
Tracts 1 through 7 above contain approximately **11.992 acres, LESS AND EXCEPT** that portion thereof, if any, located West of the boundary line between the States of Texas and Louisiana as determined by the report of the Special Master and adjudicated by the Supreme Court of the United States in litigation styled **Texas v. Louisiana, et al No. 36 Original**, or as otherwise approved by said court, all as more particularly outlined on a plat on file in the Office of Mineral Resources, Department of Natural Resources. All bearings, distances and coordinates are based on Louisiana Coordinate System of 1927, (North or South Zone), where applicable.

NOTE: The above description of the Tract nominated for the purpose of acquiring a mineral lease or a geophysical agreement has been provided and corrected, where required, exclusively by the nominating party. Any mineral lease or geophysical agreement selected from this Tract and awarded by the Louisiana State Mineral and Energy Board shall be without warranty of any kind, either express, implied or statutory including, but not limited to, title or the implied warranties of merchantability and fitness for a particular purpose.

An error or omission in the nominating party's Tract description may require that a State mineral lease or geophysical agreement be modified, canceled or abrogated due to the existence of conflicting leases, operating agreements, private claims or other future obligations or conditions within the Tract described. In such case, however, the Louisiana State Mineral and Energy Board shall not be obligated to refund any consideration paid by the Lessee prior to such modification, cancellation or abrogation including, but not limited to, bonuses, rentals and royalties.

Applicant: MIDNITE ENERGY, INC.

Bidder	Cash Payment	Price/Acre	Rental	Oil	Gas	Other



TRACT 44810 - Lafourche and St. Charles Parishes, Louisiana

All of the lands now or formerly constituting the beds and bottoms of all water bodies of every nature and description as to which title is vested in the State of Louisiana, together with all islands arising therein and other lands formed by accretion or by reliction, where allowed by law, excepting tax adjudicated lands, and not presently under mineral lease on January 10, 2018, situated in Lafourche and St. Charles Parishes, Louisiana, and more particularly described as follows: Beginning at a point having Coordinates of X = 2,251,868.82 and Y = 441,619.44; thence East 17,810.98 feet to a point having Coordinates of X = 2,269,679.80 and Y = 441,619.44; thence South 7,169.44 feet to a point having Coordinates of X = 2,269,679.80 and Y = 434,450.00; thence West 17,810.98 feet to a point having Coordinates of X = 2,251,868.82 and Y = 434,450.00; thence North 7,169.44 feet to the point of beginning, containing approximately **682 acres**, all as more particularly outlined on a plat on file in the Office of Mineral Resources, Department of Natural Resources. All bearings, distances and coordinates are based on Louisiana Coordinate System of 1927, (North or South Zone), where applicable.

NOTE: The above description of the Tract nominated for the purpose of acquiring a mineral lease or a geophysical agreement has been provided and corrected, where required, exclusively by the nominating party. Any mineral lease or geophysical agreement selected from this Tract and awarded by the Louisiana State Mineral and Energy Board shall be without warranty of any kind, either express, implied or statutory including, but not limited to, title or the implied warranties of merchantability and fitness for a particular purpose.

An error or omission in the nominating party's Tract description may require that a State mineral lease or geophysical agreement be modified, canceled or abrogated due to the existence of conflicting leases, operating agreements, private claims or other future obligations or conditions within the Tract described. In such case, however, the Louisiana State Mineral and Energy Board shall not be obligated to refund any consideration paid by the Lessee prior to such modification, cancellation or abrogation including, but not limited to, bonuses, rentals and royalties.

NOTE: The State of Louisiana does hereby reserve, and this lease shall be subject to, the imprescriptible right of surface use in the nature of a servitude in favor of the Department of Natural Resources, including its Offices and Commissions, for the sole purpose of implementing, constructing, servicing and maintaining approved coastal zone management and/or restoration projects. Utilization of any and all rights derived under this lease by the mineral lessee, its agents, successors or assigns, shall not interfere with nor hinder the reasonable surface use by the Department of Natural Resources, its Offices or Commissions, as herein above reserved.

NOTE: A portion of this tract is located on or adjacent to a Louisiana designated Natural and Scenic River. The applicant must obtain authorization from the Louisiana Department of Wildlife and Fisheries, Scenic Rivers Program prior to initiating any activities within or adjacent to the river, including, but not limited to, crossings by roads and pipelines, well sites, production facilities and water withdrawals.

Applicant: THEOPHILUS OIL, GAS & LAND SERVICES, LLC

Bidder	Cash Payment	Price/ Acre	Rental	Oil	Gas	Other



TRACT 44811 - Lafourche and St. Charles Parishes, Louisiana

All of the lands now or formerly constituting the beds and bottoms of all water bodies of every nature and description as to which title is vested in the State of Louisiana, together with all islands arising therein and other lands formed by accretion or by reliction, where allowed by law, excepting tax adjudicated lands, and not presently under mineral lease on January 10, 2018, situated in Lafourche and St. Charles Parishes, Louisiana, and more particularly described as follows: Beginning at a point having Coordinates of X = 2,265,660.00 and Y = 434,450.00; thence East 7,605.00 feet to a point having Coordinates of X = 2,273,265.00 and Y = 434,450.00; thence South 06 degrees 03 minutes 45 seconds East 14,581.55 feet to a point having Coordinates of X = 2,274,805.00 and Y = 419,950.00; thence West 5,500.00 feet to a point having Coordinates of X = 2,269,305.00 and Y = 419,950.00; thence North 14 degrees 06 minutes 38 seconds West 14,951.12 feet to the point of beginning, containing approximately **341 acres**, all as more particularly outlined on a plat on file in the Office of Mineral Resources, Department of Natural Resources. All bearings, distances and coordinates are based on Louisiana Coordinate System of 1927, (North or South Zone), where applicable.

NOTE: The above description of the Tract nominated for the purpose of acquiring a mineral lease or a geophysical agreement has been provided and corrected, where required, exclusively by the nominating party. Any mineral lease or geophysical agreement selected from this Tract and awarded by the Louisiana State Mineral and Energy Board shall be without warranty of any kind, either express, implied or statutory including, but not limited to, title or the implied warranties of merchantability and fitness for a particular purpose.

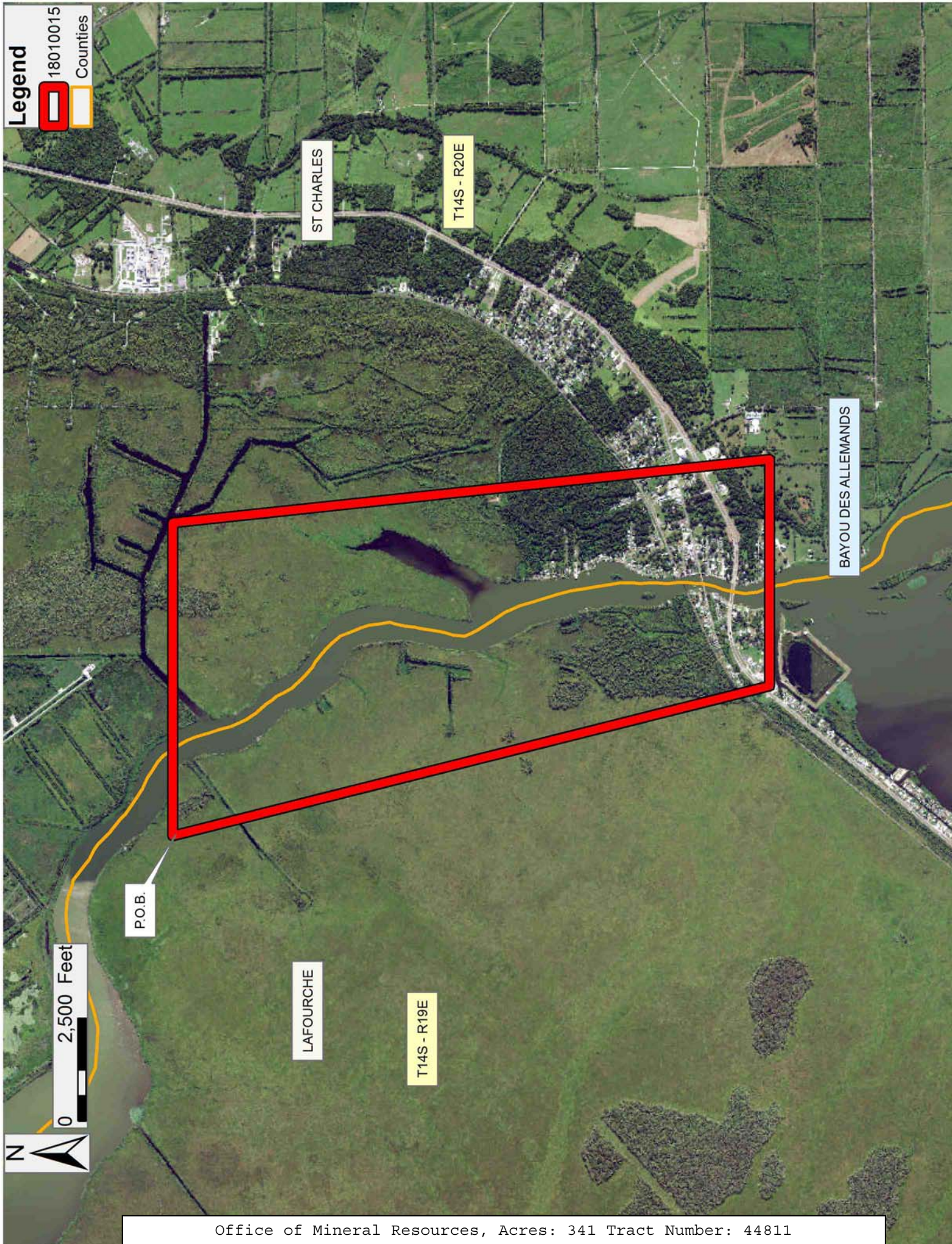
An error or omission in the nominating party's Tract description may require that a State mineral lease or geophysical agreement be modified, canceled or abrogated due to the existence of conflicting leases, operating agreements, private claims or other future obligations or conditions within the Tract described. In such case, however, the Louisiana State Mineral and Energy Board shall not be obligated to refund any consideration paid by the Lessee prior to such modification, cancellation or abrogation including, but not limited to, bonuses, rentals and royalties.

NOTE: The State of Louisiana does hereby reserve, and this lease shall be subject to, the imprescriptible right of surface use in the nature of a servitude in favor of the Department of Natural Resources, including its Offices and Commissions, for the sole purpose of implementing, constructing, servicing and maintaining approved coastal zone management and/or restoration projects. Utilization of any and all rights derived under this lease by the mineral lessee, its agents, successors or assigns, shall not interfere with nor hinder the reasonable surface use by the Department of Natural Resources, its Offices or Commissions, as herein above reserved.

NOTE: A portion of this tract is located on or adjacent to a Louisiana designated Natural and Scenic River. The applicant must obtain authorization from the Louisiana Department of Wildlife and Fisheries, Scenic Rivers Program prior to initiating any activities within or adjacent to the river, including, but not limited to, crossings by roads and pipelines, well sites, production facilities and water withdrawals.

Applicant: THEOPHILUS OIL, GAS & LAND SERVICES, LLC

Bidder	Cash Payment	Price/ Acre	Rental	Oil	Gas	Other



TRACT 44812 - Lafourche and St. Charles Parishes, Louisiana

All of the lands now or formerly constituting the beds and bottoms of all water bodies of every nature and description as to which title is vested in the State of Louisiana, together with all islands arising therein and other lands formed by accretion or by reliction, where allowed by law, excepting tax adjudicated lands, and not presently under mineral lease on January 10, 2018, situated in Lafourche and St. Charles Parishes, Louisiana, and more particularly described as follows: Beginning at a point having Coordinates of X = 2,269,305.00 and Y = 419,950.00; thence East 5,500.00 feet to a point having Coordinates of X = 2,274,805.00 and Y = 419,950.00; thence South 52 degrees 41 minutes 51 seconds East 14,570.42 feet to a point having Coordinates of X = 2,286,395.00 and Y = 411,120.00; thence South 49 degrees 53 minutes 29 seconds West 11,858.94 feet to a point having Coordinates of X = 2,277,325.00 and Y = 403,480.00; thence North 25 degrees 57 minutes 49 seconds West 18,318.88 feet to the point of beginning, (This tract includes only waterbottoms claimed and owned by the state and specifically excludes any land which the state may claim or own and to which the mineral rights are vested in the state), containing approximately **1,080 acres**, all as more particularly outlined on a plat on file in the Office of Mineral Resources, Department of Natural Resources. All bearings, distances and coordinates are based on Louisiana Coordinate System of 1927, (North or South Zone), where applicable.

NOTE: The above description of the Tract nominated for the purpose of acquiring a mineral lease or a geophysical agreement has been provided and corrected, where required, exclusively by the nominating party. Any mineral lease or geophysical agreement selected from this Tract and awarded by the Louisiana State Mineral and Energy Board shall be without warranty of any kind, either express, implied or statutory including, but not limited to, title or the implied warranties of merchantability and fitness for a particular purpose.

An error or omission in the nominating party's Tract description may require that a State mineral lease or geophysical agreement be modified, canceled or abrogated due to the existence of conflicting leases, operating agreements, private claims or other future obligations or conditions within the Tract described. In such case, however, the Louisiana State Mineral and Energy Board shall not be obligated to refund any consideration paid by the Lessee prior to such modification, cancellation or abrogation including, but not limited to, bonuses, rentals and royalties.

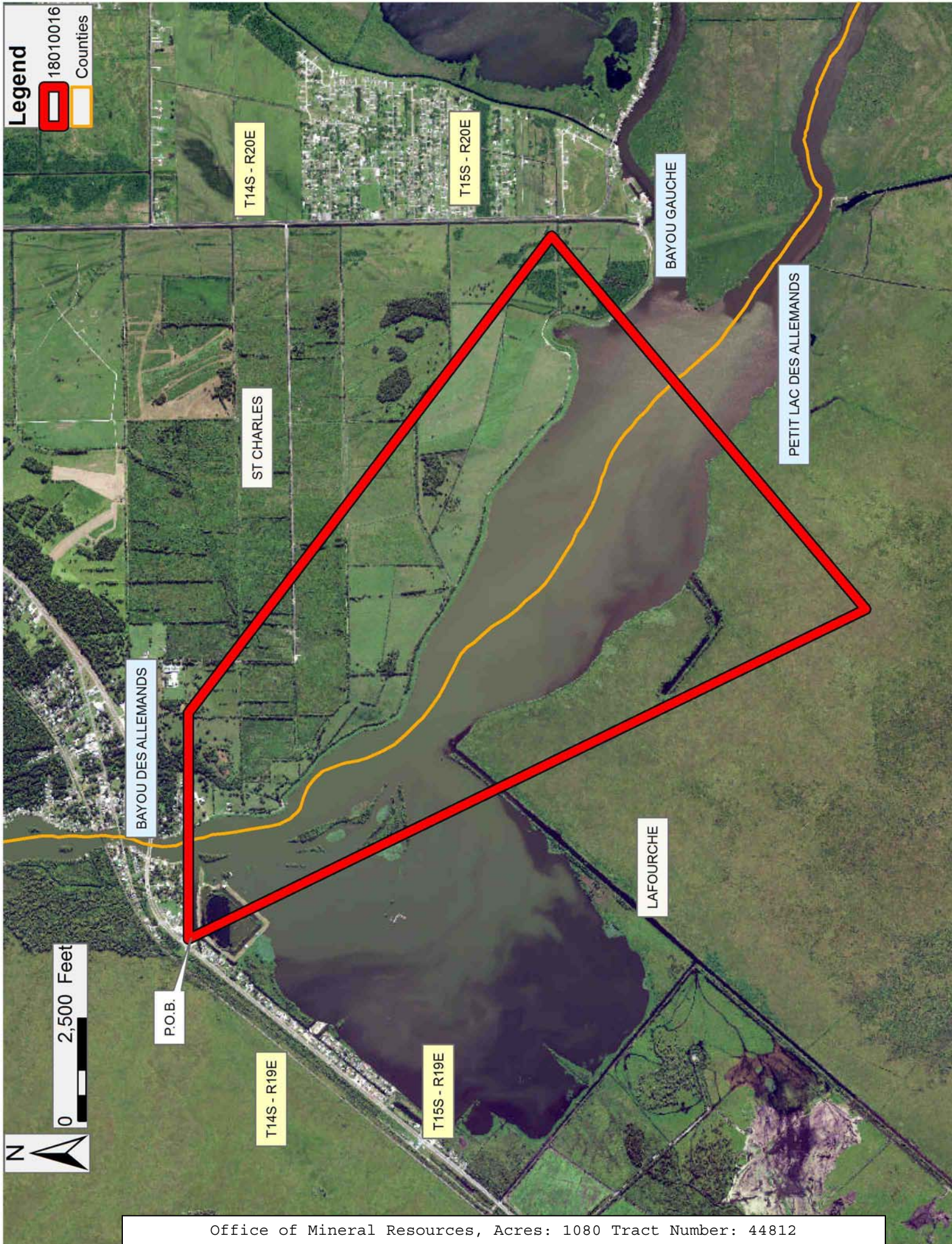
NOTE: The State of Louisiana does hereby reserve, and this lease shall be subject to, the imprescriptible right of surface use in the nature of a servitude in favor of the Department of Natural Resources, including its Offices and Commissions, for the sole purpose of implementing, constructing, servicing and maintaining approved coastal zone management and/or restoration projects. Utilization of any and all rights derived under this lease by the mineral lessee, its agents, successors or assigns,

shall not interfere with nor hinder the reasonable surface use by the Department of Natural Resources, its Offices or Commissions, as herein above reserved.

NOTE: A portion of this tract is located on or adjacent to a Louisiana designated Natural and Scenic River. The applicant must obtain authorization from the Louisiana Department of Wildlife and Fisheries, Scenic Rivers Program prior to initiating any activities within or adjacent to the river, including, but not limited to, crossings by roads and pipelines, well sites, production facilities and water withdrawals.

Applicant: THEOPHILUS OIL, GAS & LAND SERVICES, LLC

Bidder	Cash Payment	Price/ Acre	Rental	Oil	Gas	Other



TRACT 44813 - Lafourche and St. Charles Parishes, Louisiana

All of the lands now or formerly constituting the beds and bottoms of all water bodies of every nature and description as to which title is vested in the State of Louisiana, together with all islands arising therein and other lands formed by accretion or by reliction, where allowed by law, excepting tax adjudicated lands, and not presently under mineral lease on January 10, 2018, situated in Lafourche and St. Charles Parishes, Louisiana, and more particularly described as follows: Beginning at a point having Coordinates of X = 2,286,395.00 and Y = 411,120.00; thence South 71 degrees 30 minutes 43 seconds East 11,936.02 feet to a point having Coordinates of X = 2,297,715.00 and Y = 407,335.00; hence South 1,415.00 feet to a point having Coordinates of X = 2,297,715.00 and Y = 405,920.00; thence Westerly approximately 542 feet to a point on the boundary of State Lease No. 348, as amended; thence Westerly approximately 1,007 feet along said boundary of said State Lease No. 348, to a point; thence Westerly approximately 3,266 feet to a point; thence South approximately 920 feet to a point; thence East approximately 2,452 feet to a point; thence Southerly approximately 1,599 feet to a point on the boundary of said State Lease No. 348; thence Southerly approximately 786 feet along said boundary of said State Lease No. 348 to a point; thence South approximately 615 feet to a point having Coordinates of X = 2,295,352.86 and Y = 402,000.00; thence West 2,452.86 feet to a point having Coordinates of X = 2,292,900.00 and Y = 402,000.00; thence North 73 degrees 51 minutes 03 seconds West 13,427.98 feet to a point having Coordinates of X = 2,280,001.88 and Y = 405,734.84; thence North 49 degrees 53 minutes 29 seconds East 8,358.94 feet to the point of beginning, containing approximately **533 acres**, all as more particularly outlined on a plat on file in the Office of Mineral Resources, Department of Natural Resources. All bearings, distances and coordinates are based on Louisiana Coordinate System of 1927, (North or South Zone), where applicable.

NOTE: The above description of the Tract nominated for the purpose of acquiring a mineral lease or a geophysical agreement has been provided and corrected, where required, exclusively by the nominating party. Any mineral lease or geophysical agreement selected from this Tract and awarded by the Louisiana State Mineral and Energy Board shall be without warranty of any kind, either express, implied or statutory including, but not limited to, title or the implied warranties of merchantability and fitness for a particular purpose.

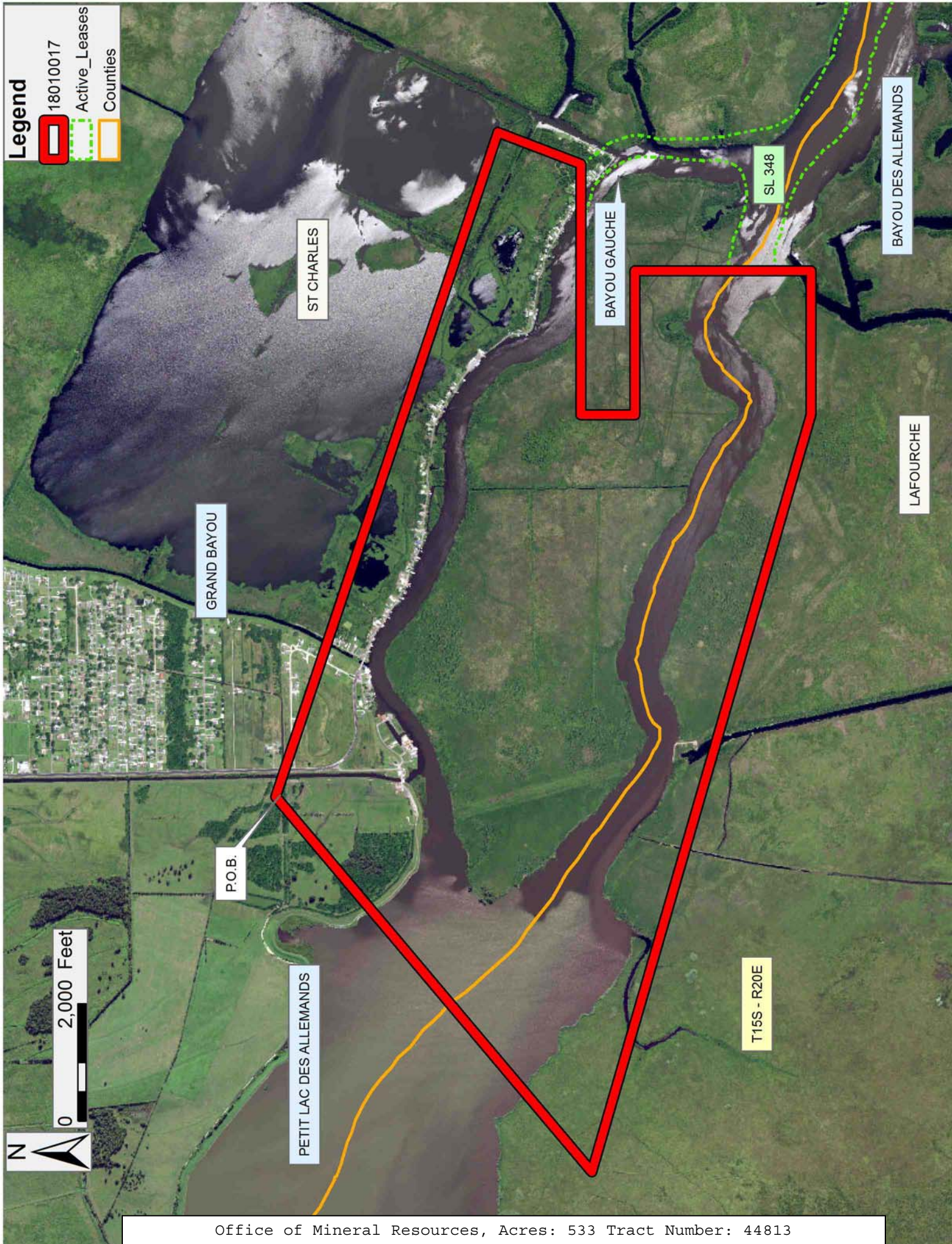
An error or omission in the nominating party's Tract description may require that a State mineral lease or geophysical agreement be modified, canceled or abrogated due to the existence of conflicting leases, operating agreements, private claims or other future obligations or conditions within the Tract described. In such case, however, the Louisiana State Mineral and Energy Board shall not be obligated to refund any consideration paid by the Lessee prior to such modification,

cancellation or abrogation including, but not limited to, bonuses, rentals and royalties.

NOTE: The State of Louisiana does hereby reserve, and this lease shall be subject to, the imprescriptible right of surface use in the nature of a servitude in favor of the Department of Natural Resources, including its Offices and Commissions, for the sole purpose of implementing, constructing, servicing and maintaining approved coastal zone management and/or restoration projects. Utilization of any and all rights derived under this lease by the mineral lessee, its agents, successors or assigns, shall not interfere with nor hinder the reasonable surface use by the Department of Natural Resources, its Offices or Commissions, as herein above reserved.

Applicant: THEOPHILUS OIL, GAS & LAND SERVICES, LLC

Bidder	Cash Payment	Price/ Acre	Rental	Oil	Gas	Other



TRACT 44814 - St. Mary Parish, Louisiana

All of the lands now or formerly constituting the beds and bottoms of all water bodies of every nature and description as to which title is vested in the State of Louisiana, together with all islands arising therein and other lands formed by accretion or by reliction, where allowed by law, excepting tax adjudicated lands, and not presently under mineral lease on January 10, 2018, situated in St. Mary Parish, Louisiana, and more particularly described as follows: Beginning at a point having Coordinates of X = 1,952,750.02 and Y = 361,240.34; thence East 13,022.28 feet to a point having Coordinates of X = 1,965,772.30 and Y = 361,240.34; thence South 15,840.00 feet to a point having Coordinates of X = 1,965,772.30 and Y = 345,400.34; thence Westerly approximately 13,023 feet to a point on the East boundary of Operating Agreement No. AO241; thence Northerly approximately 6,225 feet along said boundary of said Operating Agreement No. AO241 to its most Northern point; thence Northerly approximately 9,751 feet to the point of beginning, **LESS AND EXCEPT** any right, title, and interest in lands owned by and not under lease from the State of Louisiana, on behalf of the St. Mary Parish School Board, situated in Section 16, Township 16 South, Range 10 East, St. Mary Parish, Louisiana, contained within the above described tract, and **LESS AND EXCEPT** all that portion, if any, of Operating Agreement No. AO241, that may lie within the above tract, containing approximately **152 acres**, all as more particularly outlined on a plat on file in the Office of Mineral Resources, Department of Natural Resources. All bearings, distances and coordinates are based on Louisiana Coordinate System of 1927, (North or South Zone), where applicable.

NOTE: The above description of the Tract nominated for the purpose of acquiring a mineral lease or a geophysical agreement has been provided and corrected, where required, exclusively by the nominating party. Any mineral lease or geophysical agreement selected from this Tract and awarded by the Louisiana State Mineral and Energy Board shall be without warranty of any kind, either express, implied or statutory including, but not limited to, title or the implied warranties of merchantability and fitness for a particular purpose.

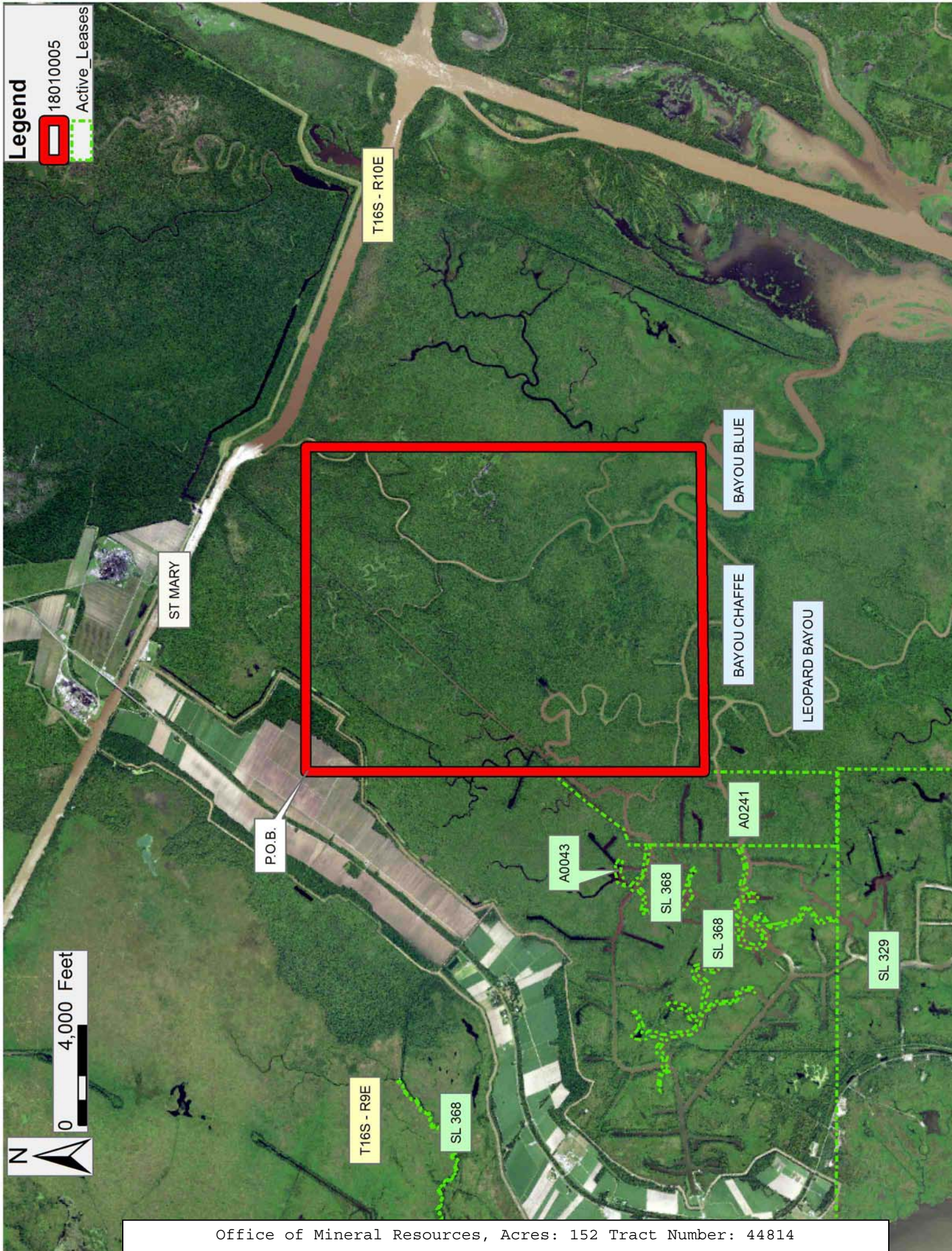
An error or omission in the nominating party's Tract description may require that a State mineral lease or geophysical agreement be modified, canceled or abrogated due to the existence of conflicting leases, operating agreements, private claims or other future obligations or conditions within the Tract described. In such case, however, the Louisiana State Mineral and Energy Board shall not be obligated to refund any consideration paid by the Lessee prior to such modification, cancellation or abrogation including, but not limited to, bonuses, rentals and royalties.

NOTE: The State of Louisiana does hereby reserve, and this lease shall be subject to, the imprescriptible right of surface use in the nature of a servitude in favor of the Department of Natural Resources, including its

Offices and Commissions, for the sole purpose of implementing, constructing, servicing and maintaining approved coastal zone management and/or restoration projects. Utilization of any and all rights derived under this lease by the mineral lessee, its agents, successors or assigns, shall not interfere with nor hinder the reasonable surface use by the Department of Natural Resources, its Offices or Commissions, as herein above reserved.

Applicant: THEOPHILUS OIL, GAS & LAND SERVICES, LLC

Bidder	Cash Payment	Price/ Acre	Rental	Oil	Gas	Other



TRACT 44815 - St. Mary Parish, Louisiana

All of the lands now or formerly constituting the beds and bottoms of all water bodies of every nature and description as to which title is vested in the State of Louisiana, together with all islands arising therein and other lands formed by accretion or by reliction, where allowed by law, excepting tax adjudicated lands, and not presently under mineral lease on January 10, 2018, situated in St. Mary Parish, Louisiana, and more particularly described as follows: Beginning at a point having Coordinates of X = 1,965,772.30 and Y = 361,240.34; thence East 15,840.00 feet to a point having Coordinates of X = 1,981,612.30 and Y = 361,240.34; thence South 10,560.00 feet to a point having Coordinates of X = 1,981,612.30 and Y = 350,680.34; thence West 15,840.00 feet to a point having Coordinates of X = 1,965,772.30 and Y = 350,680.34; thence North 10,560.00 feet to the point of beginning, containing approximately **226 acres**, all as more particularly outlined on a plat on file in the Office of Mineral Resources, Department of Natural Resources. All bearings, distances and coordinates are based on Louisiana Coordinate System of 1927, (North or South Zone), where applicable.

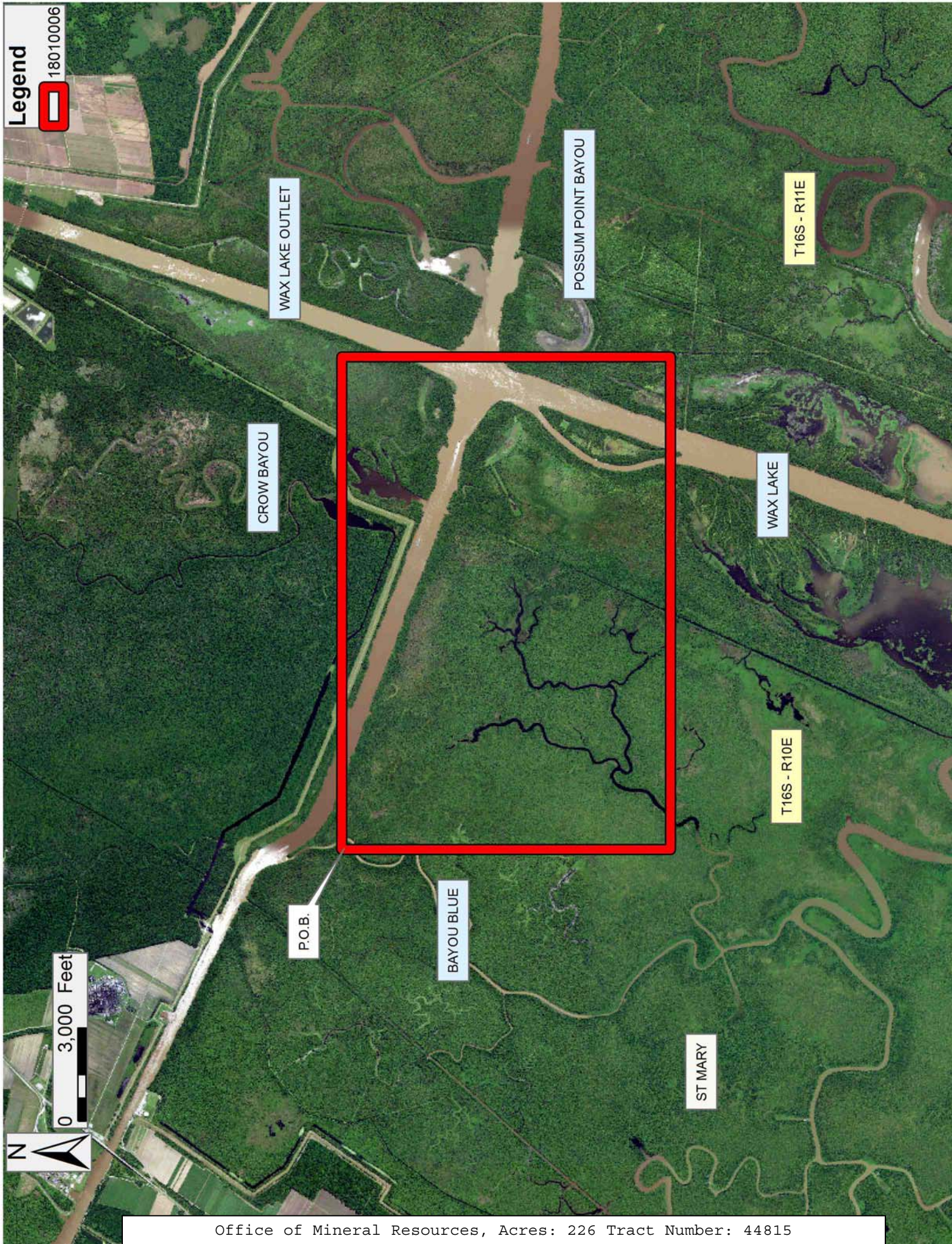
NOTE: The above description of the Tract nominated for the purpose of acquiring a mineral lease or a geophysical agreement has been provided and corrected, where required, exclusively by the nominating party. Any mineral lease or geophysical agreement selected from this Tract and awarded by the Louisiana State Mineral and Energy Board shall be without warranty of any kind, either express, implied or statutory including, but not limited to, title or the implied warranties of merchantability and fitness for a particular purpose.

An error or omission in the nominating party's Tract description may require that a State mineral lease or geophysical agreement be modified, canceled or abrogated due to the existence of conflicting leases, operating agreements, private claims or other future obligations or conditions within the Tract described. In such case, however, the Louisiana State Mineral and Energy Board shall not be obligated to refund any consideration paid by the Lessee prior to such modification, cancellation or abrogation including, but not limited to, bonuses, rentals and royalties.

NOTE: The State of Louisiana does hereby reserve, and this lease shall be subject to, the imprescriptible right of surface use in the nature of a servitude in favor of the Department of Natural Resources, including its Offices and Commissions, for the sole purpose of implementing, constructing, servicing and maintaining approved coastal zone management and/or restoration projects. Utilization of any and all rights derived under this lease by the mineral lessee, its agents, successors or assigns, shall not interfere with nor hinder the reasonable surface use by the Department of Natural Resources, its Offices or Commissions, as herein above reserved.

Applicant: THEOPHILUS OIL, GAS & LAND SERVICES, LLC

Bidder	Cash Payment	Price/ Acre	Rental	Oil	Gas	Other



TRACT 44816 - St. Mary Parish, Louisiana

All of the lands now or formerly constituting the beds and bottoms of all water bodies of every nature and description as to which title is vested in the State of Louisiana, together with all islands arising therein and other lands formed by accretion or by reliction, where allowed by law, excepting tax adjudicated lands, and not presently under mineral lease on January 10, 2018, situated in St. Mary Parish, Louisiana, and more particularly described as follows: Beginning at a point having Coordinates of X = 1,981,612.30 and Y = 361,240.34; thence East 15,800.00 feet to a point having Coordinates of X = 1,997,412.30 and Y = 361,240.34; thence South 10,560.00 feet to a point having Coordinates of X = 1,997,412.30 and Y = 350,680.34; thence West 15,800.00 feet to a point having Coordinates of X = 1,981,612.30 and Y = 350,680.34; thence North 10,560.00 feet to the point of beginning, **LESS AND EXCEPT** any right, title, and interest in lands owned by and not under lease from the State of Louisiana, on behalf of the St. Mary Parish School Board, situated in Section 16, Township 16 South, Range 11 East, St. Mary Parish, Louisiana, contained within the above described tract, containing approximately **283 acres**, all as more particularly outlined on a plat on file in the Office of Mineral Resources, Department of Natural Resources. All bearings, distances and coordinates are based on Louisiana Coordinate System of 1927, (North or South Zone), where applicable.

NOTE: The above description of the Tract nominated for the purpose of acquiring a mineral lease or a geophysical agreement has been provided and corrected, where required, exclusively by the nominating party. Any mineral lease or geophysical agreement selected from this Tract and awarded by the Louisiana State Mineral and Energy Board shall be without warranty of any kind, either express, implied or statutory including, but not limited to, title or the implied warranties of merchantability and fitness for a particular purpose.

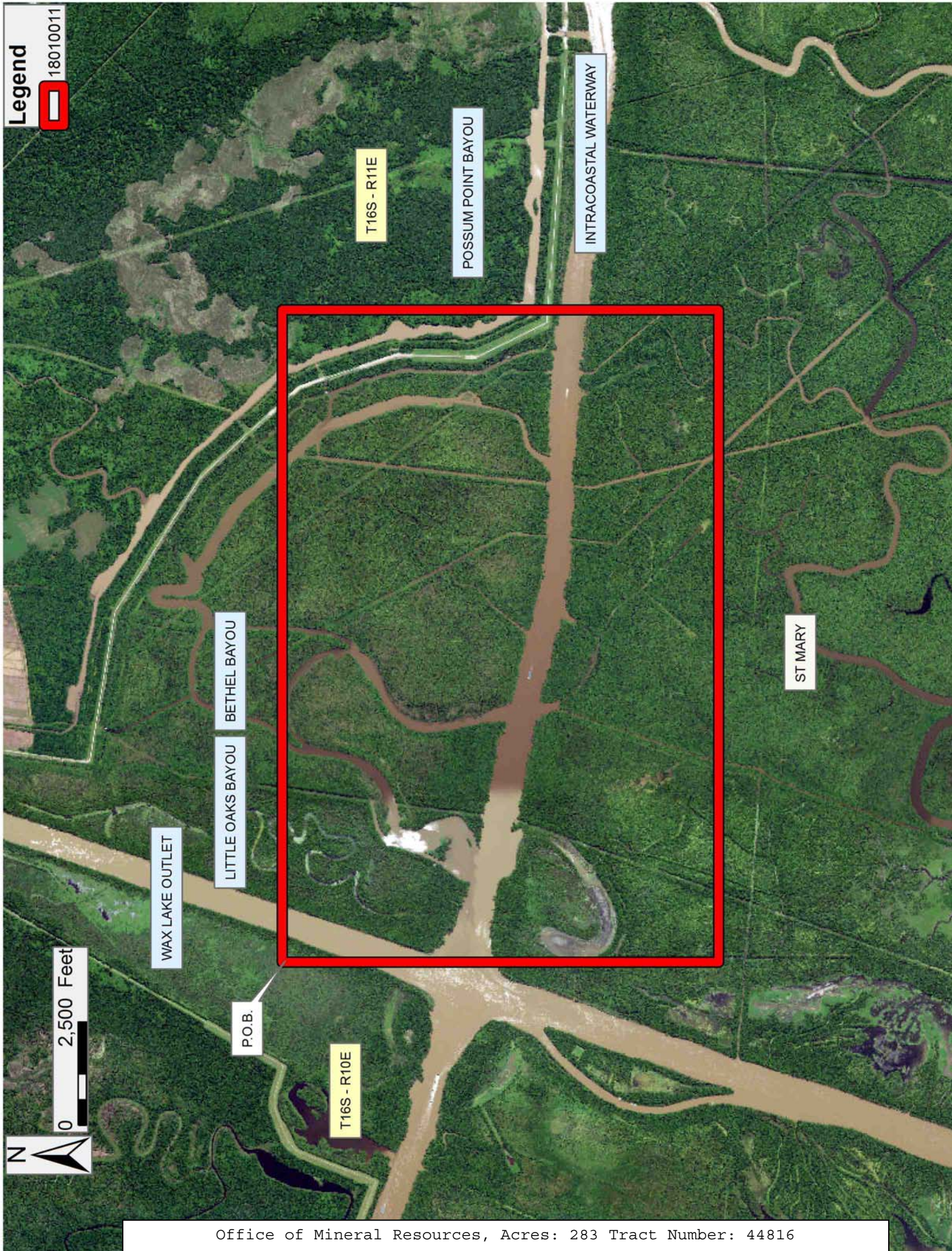
An error or omission in the nominating party's Tract description may require that a State mineral lease or geophysical agreement be modified, canceled or abrogated due to the existence of conflicting leases, operating agreements, private claims or other future obligations or conditions within the Tract described. In such case, however, the Louisiana State Mineral and Energy Board shall not be obligated to refund any consideration paid by the Lessee prior to such modification, cancellation or abrogation including, but not limited to, bonuses, rentals and royalties.

NOTE: The State of Louisiana does hereby reserve, and this lease shall be subject to, the imprescriptible right of surface use in the nature of a servitude in favor of the Department of Natural Resources, including its Offices and Commissions, for the sole purpose of implementing, constructing, servicing and maintaining approved coastal zone management and/or restoration projects. Utilization of any and all rights derived under this lease by the mineral lessee, its agents, successors or assigns,

shall not interfere with nor hinder the reasonable surface use by the Department of Natural Resources, its Offices or Commissions, as herein above reserved.

Applicant: THEOPHILUS OIL, GAS & LAND SERVICES, LLC

Bidder	Cash Payment	Price/ Acre	Rental	Oil	Gas	Other



TRACT 44817 - St. Mary Parish, Louisiana

All of the lands now or formerly constituting the beds and bottoms of all water bodies of every nature and description as to which title is vested in the State of Louisiana, together with all islands arising therein and other lands formed by accretion or by reliction, where allowed by law, excepting tax adjudicated lands, and not presently under mineral lease on January 10, 2018, situated in St. Mary Parish, Louisiana, and more particularly described as follows: Beginning at a point having Coordinates of X = 1,965,772.30 and Y = 350,680.34; thence East 15,840.00 feet to a point having Coordinates of X = 1,981,612.30 and Y = 350,680.34; thence Southerly approximately 10,451 feet to the Northeast corner of the 1965 Compromise Agreement, (Agreement No. 126269), between the State of Louisiana and the St. Mary Parish Land Company; thence Westerly approximately 15,970 feet along the Northern boundary of said Compromise Agreement to a point; thence Northerly approximately 10,605 feet to the point of beginning, **LESS AND EXCEPT** all that portion of the above described tract, if any, that may lie within the 1965 Compromise Agreement, (Agreement No. 126269), between the State of Louisiana and the St. Mary Parish Land Company, containing approximately **1,946 acres**, all as more particularly outlined on a plat on file in the Office of Mineral Resources, Department of Natural Resources. All bearings, distances and coordinates are based on Louisiana Coordinate System of 1927, (North or South Zone), where applicable.

NOTE: The above description of the Tract nominated for the purpose of acquiring a mineral lease or a geophysical agreement has been provided and corrected, where required, exclusively by the nominating party. Any mineral lease or geophysical agreement selected from this Tract and awarded by the Louisiana State Mineral and Energy Board shall be without warranty of any kind, either express, implied or statutory including, but not limited to, title or the implied warranties of merchantability and fitness for a particular purpose.

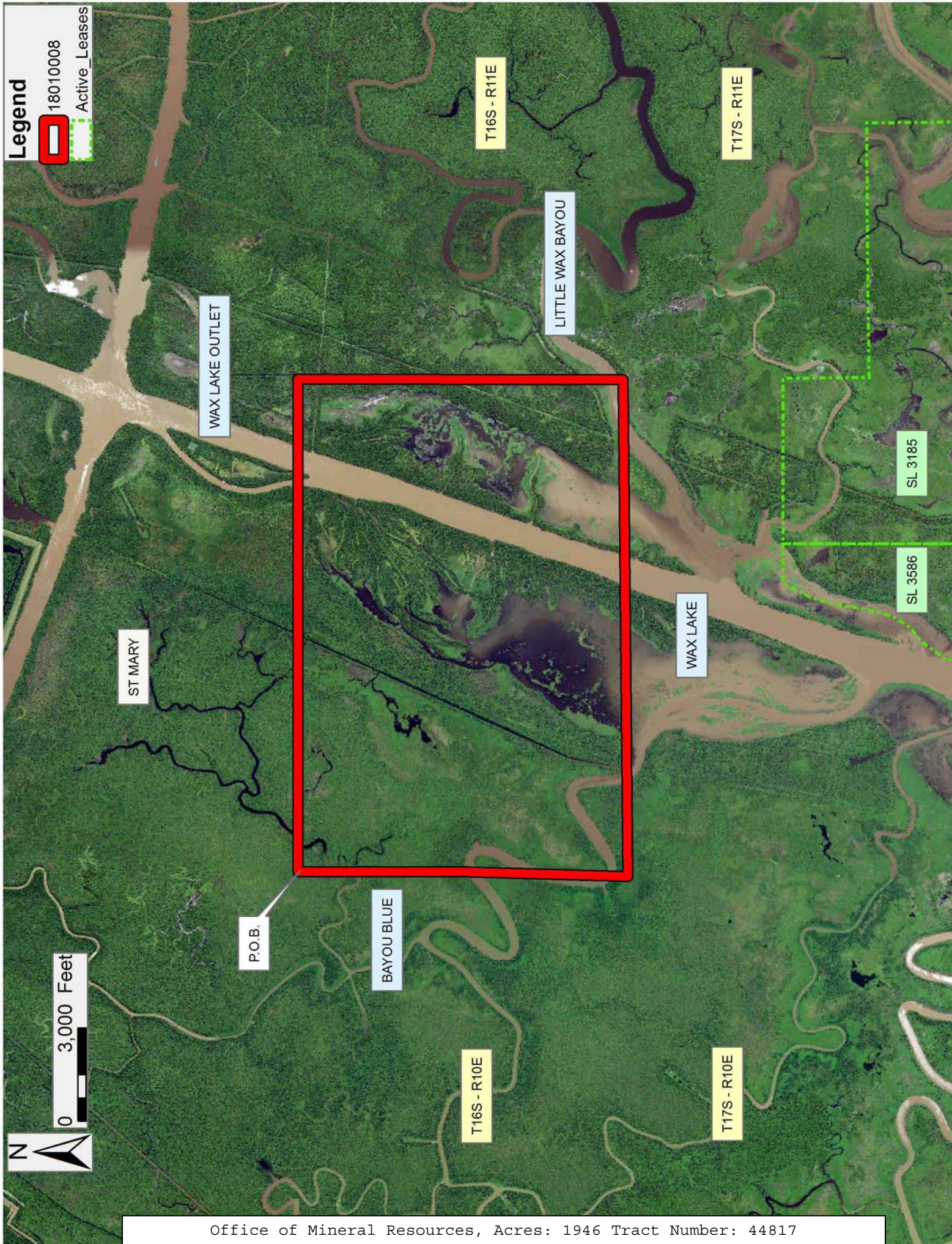
An error or omission in the nominating party's Tract description may require that a State mineral lease or geophysical agreement be modified, canceled or abrogated due to the existence of conflicting leases, operating agreements, private claims or other future obligations or conditions within the Tract described. In such case, however, the Louisiana State Mineral and Energy Board shall not be obligated to refund any consideration paid by the Lessee prior to such modification, cancellation or abrogation including, but not limited to, bonuses, rentals and royalties.

NOTE: The State of Louisiana does hereby reserve, and this lease shall be subject to, the imprescriptible right of surface use in the nature of a servitude in favor of the Department of Natural Resources, including its Offices and Commissions, for the sole purpose of implementing, constructing, servicing and maintaining approved coastal zone management and/or restoration projects. Utilization of any and all rights derived

under this lease by the mineral lessee, its agents, successors or assigns, shall not interfere with nor hinder the reasonable surface use by the Department of Natural Resources, its Offices or Commissions, as herein above reserved.

Applicant: THEOPHILUS OIL, GAS & LAND SERVICES, LLC

Bidder	Cash Payment	Price/ Acre	Rental	Oil	Gas	Other



TRACT 44818 - St. Mary Parish, Louisiana

All of the lands now or formerly constituting the beds and bottoms of all water bodies of every nature and description as to which title is vested in the State of Louisiana, together with all islands arising therein and other lands formed by accretion or by reliction, where allowed by law, excepting tax adjudicated lands, and not presently under mineral lease on January 10, 2018, situated in St. Mary Parish, Louisiana, and more particularly described as follows: Beginning at a point having Coordinates of X = 1,981,612.30 and Y = 350,680.34; thence East 15,800.00 feet to a point having Coordinates of X = 1,997,412.30 and Y = 350,680.34; thence South 10,560.00 feet to a point having Coordinates of X = 1,997,412.30 and Y = 340,120.34; thence Westerly approximately 15,818 feet to the Northeast corner of the 1965 Compromise Agreement, (Agreement No. 126269), between the State of Louisiana and the St. Mary Parish Land Company; thence Northerly approximately 10,451 feet to the point of beginning, **LESS AND EXCEPT** all that portion, if any, of the above described tract that may lie within the 1965 Compromise Agreement, (Agreement No. 126269), between the State of Louisiana and the St. Mary Parish Land Company, containing approximately **258 acres**, all as more particularly outlined on a plat on file in the Office of Mineral Resources, Department of Natural Resources. All bearings, distances and coordinates are based on Louisiana Coordinate System of 1927, (North or South Zone), where applicable.

NOTE: The above description of the Tract nominated for the purpose of acquiring a mineral lease or a geophysical agreement has been provided and corrected, where required, exclusively by the nominating party. Any mineral lease or geophysical agreement selected from this Tract and awarded by the Louisiana State Mineral and Energy Board shall be without warranty of any kind, either express, implied or statutory including, but not limited to, title or the implied warranties of merchantability and fitness for a particular purpose.

An error or omission in the nominating party's Tract description may require that a State mineral lease or geophysical agreement be modified, canceled or abrogated due to the existence of conflicting leases, operating agreements, private claims or other future obligations or conditions within the Tract described. In such case, however, the Louisiana State Mineral and Energy Board shall not be obligated to refund any consideration paid by the Lessee prior to such modification, cancellation or abrogation including, but not limited to, bonuses, rentals and royalties.

NOTE: The State of Louisiana does hereby reserve, and this lease shall be subject to, the imprescriptible right of surface use in the nature of a servitude in favor of the Department of Natural Resources, including its Offices and Commissions, for the sole purpose of implementing, constructing, servicing and maintaining approved coastal zone management and/or restoration projects. Utilization of any and all rights derived under this lease by the mineral lessee, its agents, successors or assigns,

shall not interfere with nor hinder the reasonable surface use by the Department of Natural Resources, its Offices or Commissions, as herein above reserved.

Applicant: THEOPHILUS OIL, GAS & LAND SERVICES, LLC

Bidder	Cash Payment	Price/ Acre	Rental	Oil	Gas	Other

