

TRACT 44650 - Plaquemines Parish, Louisiana

All of the lands now or formerly constituting the beds and bottoms of all water bodies of every nature and description as to which title is vested in the State of Louisiana, together with all islands arising therein and other lands formed by accretion or by reliction, where allowed by law, excepting tax adjudicated lands, and not presently under mineral lease on January 11, 2017, situated in Plaquemines Parish, Louisiana, and more particularly described as follows: Beginning at a point having Coordinates of X = 2,496,069.54 and Y = 286,600.00; thence East 15,033.33 feet to a point having Coordinates of X = 2,511,102.87 and Y = 286,600.00; thence South 9,696.74 feet to a point having Coordinates of X = 2,511,102.87 and Y = 276,903.26; thence West approximately 6,997.41 feet to the Northeast corner of State Lease No. 2376 having Coordinates of X = 2,504,105.46 and Y = 276,903.26; thence South 89 degrees 15 minutes 00 seconds West 7,952.84 feet to the Northwest corner of said State Lease No. 2376, also being a point on the Eastern boundary of State Lease No. 2104 having Coordinates of X = 2,496,153.31 and Y = 276,799.16; thence North 00 degrees 45 minutes 00 seconds West 6,399.91 feet along the Eastern boundary of said State Lease No. 2104 to its Northeast corner having Coordinates of X = 2,496,069.54 and Y = 283,198.52; thence North 3,401.48 feet to the point of beginning, containing approximately **255 acres**, all as more particularly outlined on a plat on file in the Office of Mineral Resources, Department of Natural Resources. All bearings, distances and coordinates are based on Louisiana Coordinate System of 1927, (North or South Zone), where applicable.

NOTE: The above description of the Tract nominated for the purpose of acquiring a mineral lease or a geophysical agreement has been provided and corrected, where required, exclusively by the nominating party. Any mineral lease or geophysical agreement selected from this Tract and awarded by the Louisiana State Mineral and Energy Board shall be without warranty of any kind, either express, implied or statutory including, but not limited to, title or the implied warranties of merchantability and fitness for a particular purpose.

An error or omission in the nominating party's Tract description may require that a State mineral lease or geophysical agreement be modified, canceled or abrogated due to the existence of conflicting leases, operating agreements, private claims or other future obligations or conditions within the Tract described. In such case, however, the Louisiana State Mineral and Energy Board shall not be obligated to refund any consideration paid by the Lessee prior to such modification, cancellation or abrogation including, but not limited to, bonuses, rentals and royalties.

NOTE: The State of Louisiana does hereby reserve, and this lease shall be subject to, the imprescriptible right of surface use in the nature of a servitude in favor of the Department of Natural Resources, including its Offices and Commissions, for the sole purpose of implementing,

constructing, servicing and maintaining approved coastal zone management and/or restoration projects. Utilization of any and all rights derived under this lease by the mineral lessee, its agents, successors or assigns, shall not interfere with nor hinder the reasonable surface use by the Department of Natural Resources, its Offices or Commissions, as herein above reserved.

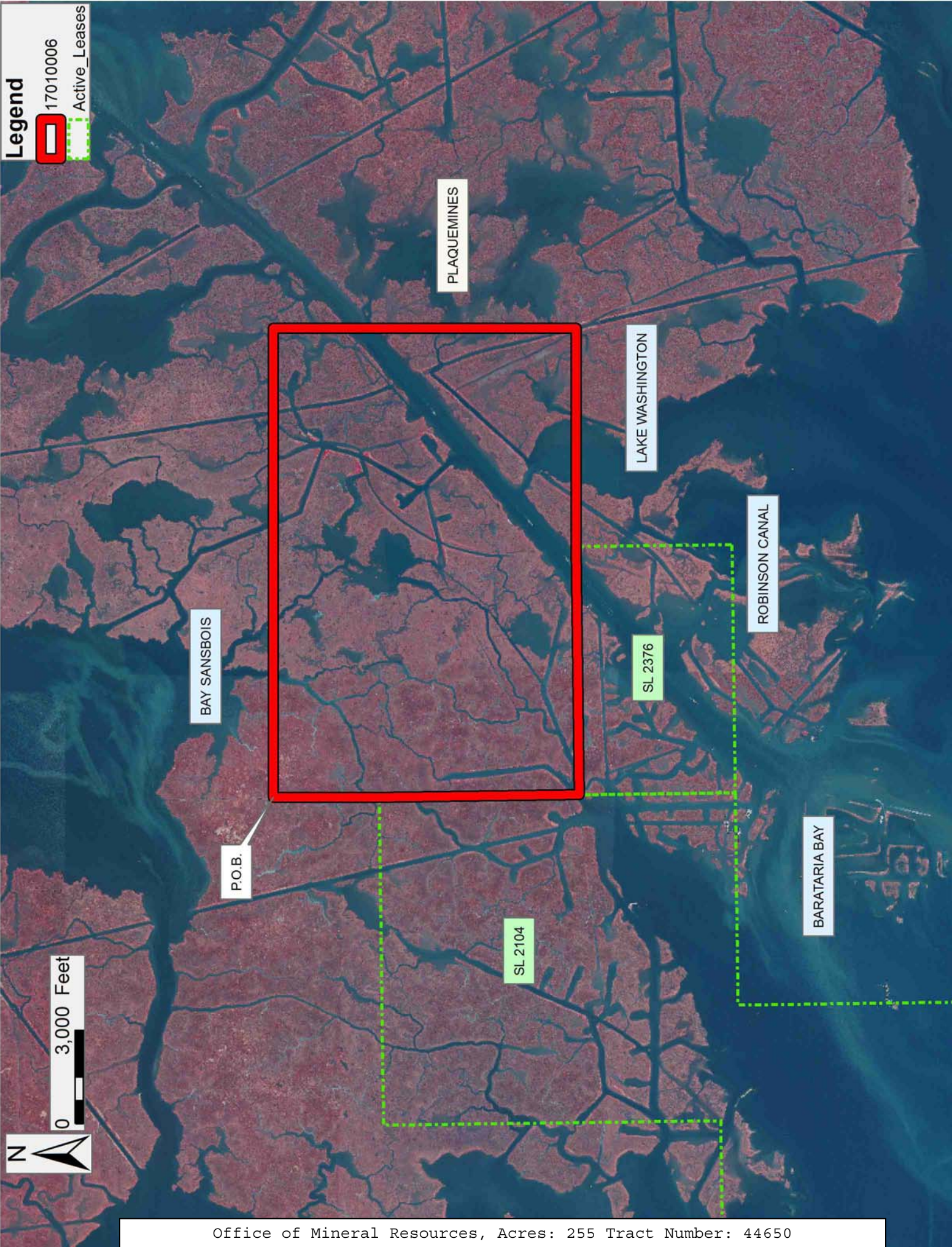
Applicant: OIL LAND SERVICES, INC.

Bidder	Cash Payment	Price/Acre	Rental	Oil	Gas	Other

Legend

17010006

Active_Leases



TRACT 44651 - Plaquemines Parish, Louisiana

All of the lands now or formerly constituting the beds and bottoms of all water bodies of every nature and description as to which title is vested in the State of Louisiana, together with all islands arising therein and other lands formed by accretion or by reliction, where allowed by law, excepting tax adjudicated lands, and not presently under mineral lease on January 11, 2017, situated in Plaquemines Parish, Louisiana, and more particularly described as follows: Beginning at a point having Coordinates of X = 2,511,102.87 and Y = 286,600.00; thence East 10,232.37 feet to a point having Coordinates of X = 2,521,335.24 and Y = 286,600.00; thence South 8,683.61 feet to the Northwest corner of State Lease No. 20456 having Coordinates of X = 2,521,335.24 and Y = 277,916.39; thence South 01 degrees 56 minutes 41 seconds East 1,293.91 feet along the Western boundary of said State Lease No. 20456 to the Southwest corner of State Lease No. 20456, also being the Westernmost Northwest corner of State Lease No. 20008 having Coordinates of X = 2,521,379.15 and Y = 276,623.22; thence West 10,276.28 feet to a point having Coordinates of X = 2,511,102.87 and Y = 276,623.22; thence North 9,976.78 feet to the point of beginning, containing approximately **186 acres**, all as more particularly outlined on a plat on file in the Office of Mineral Resources, Department of Natural Resources. All bearings, distances and coordinates are based on Louisiana Coordinate System of 1927, (North or South Zone), where applicable.

NOTE: The above description of the Tract nominated for the purpose of acquiring a mineral lease or a geophysical agreement has been provided and corrected, where required, exclusively by the nominating party. Any mineral lease or geophysical agreement selected from this Tract and awarded by the Louisiana State Mineral and Energy Board shall be without warranty of any kind, either express, implied or statutory including, but not limited to, title or the implied warranties of merchantability and fitness for a particular purpose.

An error or omission in the nominating party's Tract description may require that a State mineral lease or geophysical agreement be modified, canceled or abrogated due to the existence of conflicting leases, operating agreements, private claims or other future obligations or conditions within the Tract described. In such case, however, the Louisiana State Mineral and Energy Board shall not be obligated to refund any consideration paid by the Lessee prior to such modification, cancellation or abrogation including, but not limited to, bonuses, rentals and royalties.

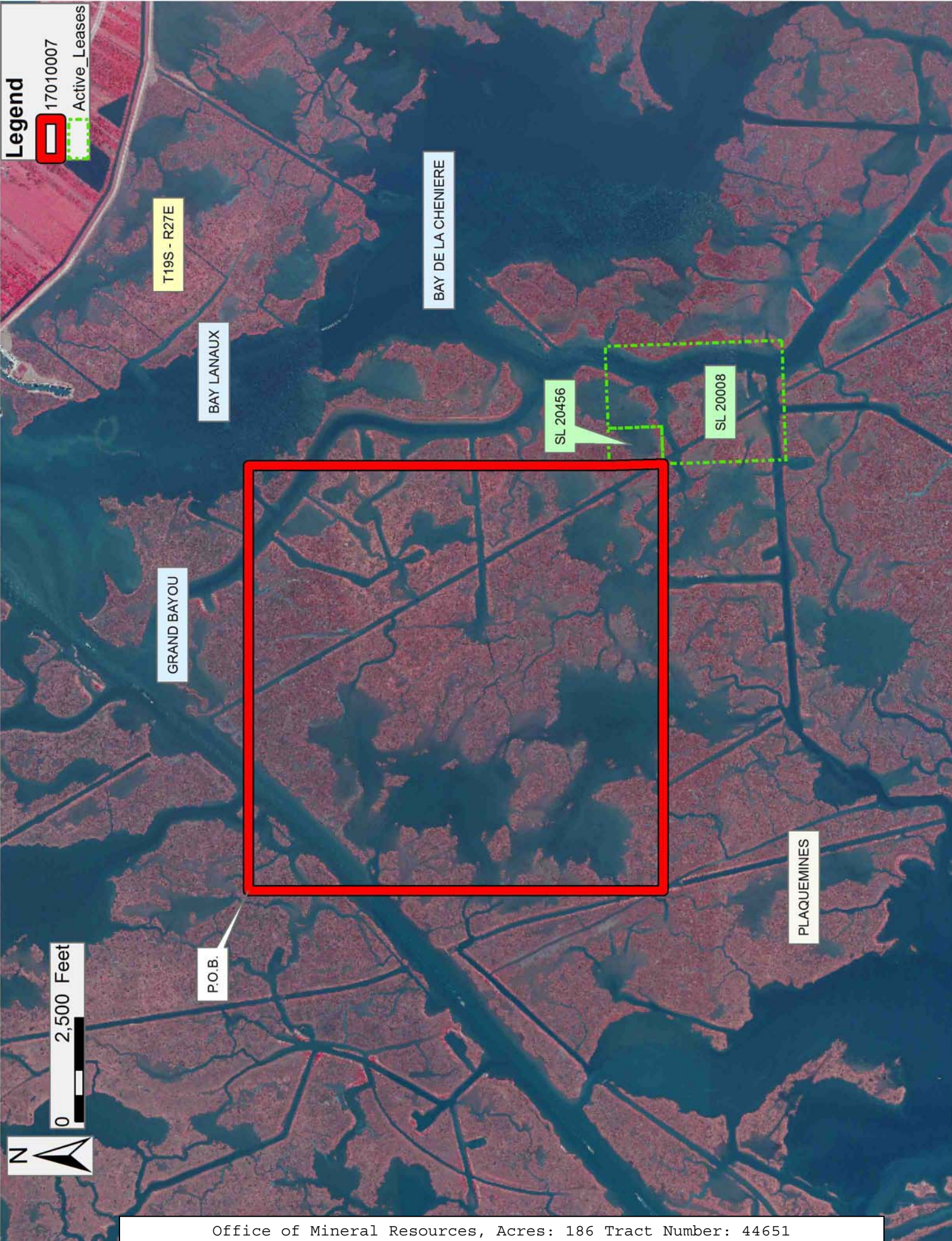
NOTE: The State of Louisiana does hereby reserve, and this lease shall be subject to, the imprescriptible right of surface use in the nature of a servitude in favor of the Department of Natural Resources, including its Offices and Commissions, for the sole purpose of implementing, constructing, servicing and maintaining approved coastal zone management and/or restoration projects. Utilization of any and all rights derived

under this lease by the mineral lessee, its agents, successors or assigns, shall not interfere with nor hinder the reasonable surface use by the Department of Natural Resources, its Offices or Commissions, as herein above reserved.

Applicant: OIL LAND SERVICES, INC.

Bidder	Cash Payment	Price/Acre	Rental	Oil	Gas	Other

Legend
17010007
Active_Leases



T19S - R27E

BAY LANAUX

BAY DE LA CHENIERE

SL 20456

SL 20008

GRAND BAYOU

PLAQUEMINES

P.O.B.

0 2,500 Feet



TRACT 44652 - Plaquemines Parish, Louisiana

All of the lands now or formerly constituting the beds and bottoms of all water bodies of every nature and description as to which title is vested in the State of Louisiana, together with all islands arising therein and other lands formed by accretion or by reliction, where allowed by law, excepting tax adjudicated lands, and not presently under mineral lease on January 11, 2017, situated in Plaquemines Parish, Louisiana, and more particularly described as follows: Beginning at the Northeast corner of State Lease No. 20008 having Coordinates of X = 2,524,208.59 and Y = 278,013.95; thence 20008 South 88 degrees 03 minutes 19 seconds West 1,976.62 feet along the Northern boundary of said State Lease No. to its Northernmost Northwest corner which is also the Northeast corner of State Lease No. 20456 having Coordinates of X = 2,522,233.11 and Y = 277,946.88; thence North 88 degrees 03 minutes 19 seconds West 898.38 feet along the Northern boundary of said State Lease No. 20456 to its Northwest corner having Coordinates of X = 2,521,335.24 and Y = 277,916.39; thence North 2,891.50 feet to a point having Coordinates of X = 2,521,335.24 and Y = 280,807.89; thence East 15,814.76 feet to a point having Coordinates of X = 2,537,150.00 and Y = 280,807.89; thence South 8,647.69 feet to a point having Coordinates of X = 2,537,150.00 and Y = 272,160.20; thence West 12,797.19 feet to a point having Coordinates of X = 2,524,352.81 and Y = 272,160.20; thence North 1,606.21 feet to the Southeast corner of State Lease No. 20008 having Coordinates of X = 2,524,352.81 and Y = 273,766.41; thence North 01 degrees 56 minutes 43 seconds West 4,249.99 feet along the Eastern boundary of said State Lease No. 20008 to the point of beginning, containing approximately **1,160 acres**, all as more particularly outlined on a plat on file in the Office of Mineral Resources, Department of Natural Resources. All bearings, distances and coordinates are based on Louisiana Coordinate System of 1927, (North or South Zone), where applicable.

NOTE: The above description of the Tract nominated for the purpose of acquiring a mineral lease or a geophysical agreement has been provided and corrected, where required, exclusively by the nominating party. Any mineral lease or geophysical agreement selected from this Tract and awarded by the Louisiana State Mineral and Energy Board shall be without warranty of any kind, either express, implied or statutory including, but not limited to, title or the implied warranties of merchantability and fitness for a particular purpose.

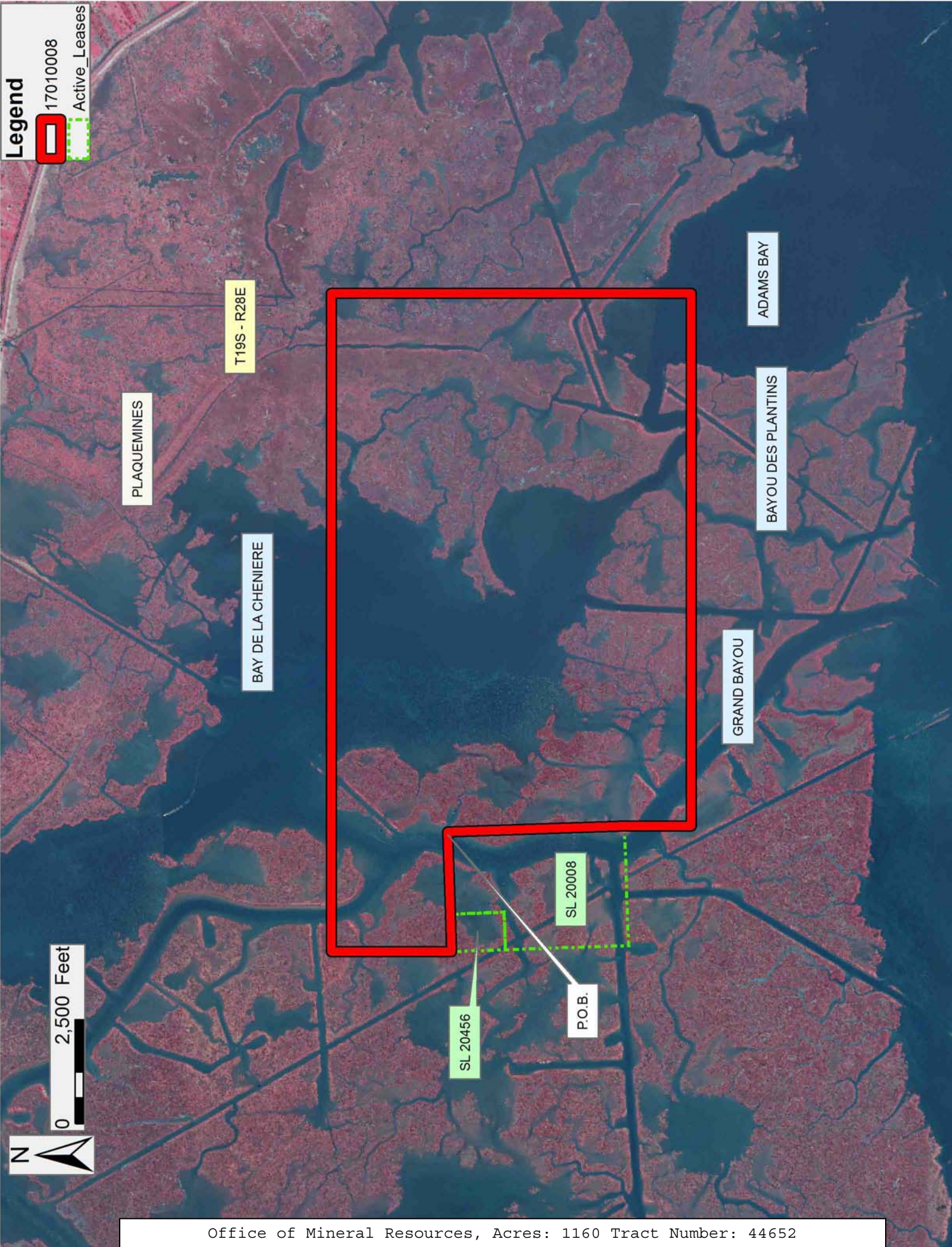
An error or omission in the nominating party's Tract description may require that a State mineral lease or geophysical agreement be modified, canceled or abrogated due to the existence of conflicting leases, operating agreements, private claims or other future obligations or conditions within the Tract described. In such case, however, the Louisiana State Mineral and Energy Board shall not be obligated to refund any consideration paid by the Lessee prior to such modification, cancellation or abrogation including, but not limited to, bonuses, rentals and royalties.

NOTE: The State of Louisiana does hereby reserve, and this lease shall be subject to, the imprescriptible right of surface use in the nature of a servitude in favor of the Department of Natural Resources, including its Offices and Commissions, for the sole purpose of implementing, constructing, servicing and maintaining approved coastal zone management and/or restoration projects. Utilization of any and all rights derived under this lease by the mineral lessee, its agents, successors or assigns, shall not interfere with nor hinder the reasonable surface use by the Department of Natural Resources, its Offices or Commissions, as herein above reserved.

Applicant: OIL LAND SERVICES, INC.

Bidder	Cash Payment	Price/Acre	Rental	Oil	Gas	Other

Legend
17010008
Active_Leases



PLAQUEMINES

T19S - R28E

BAY DE LA CHENIERE

ADAMS BAY

BAYOU DES PLANTINS

GRAND BAYOU

SL 20456

SL 20008

P.O.B.

0 2,500 Feet

TRACT 44653 - Plaquemines Parish, Louisiana

All of the lands now or formerly constituting the beds and bottoms of all water bodies of every nature and description as to which title is vested in the State of Louisiana, together with all islands arising therein and other lands formed by accretion or by reliction, where allowed by law, excepting tax adjudicated lands, and not presently under mineral lease on January 11, 2017, situated in Plaquemines Parish, Louisiana, and more particularly described as follows: Beginning at a point having Coordinates of X = 2,511,102.87 and Y = 276,623.22; thence East 10,276.28 feet to the Southwest corner of State Lease No. 20456, also being the Westernmost Northwest corner of State Lease No. 20008 having Coordinates of X = 2,521,379.15 and Y = 276,623.22; thence along the Westernmost Western boundary of State Lease No. 20008 South 01 degrees 56 minutes 42 seconds East 2,956.06 feet to Southwest corner of State Lease No. 20008 having Coordinates of X = 2,521,479.49 and Y = 273,668.86; thence along the Southern boundary of said State Lease No. 20008 North 88 degrees 03 minutes 20 seconds East 2,875.02 feet to the Southeast corner of said State Lease No. 20008 having Coordinates of X = 2,524,352.85 and Y = 273,766.41; thence South 00 degrees 00 minutes 06 seconds West 1,606.21 feet to a point having Coordinates of X = 2,524,352.81 and Y = 272,160.20; thence West 587.62 feet to the Northeast corner of State Lease No. 1753 having Coordinates of X = 2,523,765.19 and Y = 272,160.20; thence along the Northern boundary of said State Lease No. 1753 South 89 degrees 15 minutes 00 seconds West 4,796.88 feet to the Northwest corner of said State Lease No. 1753 having Coordinates of X = 2,518,968.73 and Y = 272,097.41; thence along the Western boundary of said State Lease No 1753 South 00 degrees 45 minutes 00 seconds East 4,580.32 feet to the Southwest corner of said State Lease No. 1753 having Coordinates of X = 2,519,028.68 and Y = 267,517.49; thence North 89 degrees 15 minutes 00 seconds East 2,175.02 feet along the Southern boundary of said State Lease No. 1753 to a point having Coordinates of X = 2,521,203.51 and Y = 267,545.96, said point also being the Southwest corner of State Lease No. 21655, and also the Westernmost Northwest corner of State Lease No. 21656; thence along the Northwestern boundary of said State Lease No. 21656 South 59 degrees 28 minutes 10 seconds West 1,987.44 feet to a point having Coordinates of X = 2,519,491.61 and Y = 266,536.34; thence South 01 degrees 42 minutes 01 second East 1,731.29 feet along the Western boundary of said State Lease No. 21656 to its Southwest corner having Coordinates of X = 2,519,542.98 and Y = 264,805.82; thence South 774.09 feet to a point having Coordinates of X = 2,519,542.98 and Y = 264,031.73; thence West 8,440.11 feet to a point having Coordinates of X = 2,511,102.87 and Y = 264,031.73; North 12,591.49 feet to the point of beginning; containing approximately **773 acres**, all as more particularly outlined on a plat on file in the Office of Mineral Resources, Department of Natural Resources. All bearings, distances and coordinates are based on Louisiana Coordinate System of 1927, (North or South Zone), where applicable.

NOTE: The above description of the Tract nominated for the purpose of acquiring a mineral lease or a geophysical agreement has been provided and

corrected, where required, exclusively by the nominating party. Any mineral lease or geophysical agreement selected from this Tract and awarded by the Louisiana State Mineral and Energy Board shall be without warranty of any kind, either express, implied or statutory including, but not limited to, title or the implied warranties of merchantability and fitness for a particular purpose.

An error or omission in the nominating party's Tract description may require that a State mineral lease or geophysical agreement be modified, canceled or abrogated due to the existence of conflicting leases, operating agreements, private claims or other future obligations or conditions within the Tract described. In such case, however, the Louisiana State Mineral and Energy Board shall not be obligated to refund any consideration paid by the Lessee prior to such modification, cancellation or abrogation including, but not limited to, bonuses, rentals and royalties.

NOTE: The State of Louisiana does hereby reserve, and this lease shall be subject to, the imprescriptible right of surface use in the nature of a servitude in favor of the Department of Natural Resources, including its Offices and Commissions, for the sole purpose of implementing, constructing, servicing and maintaining approved coastal zone management and/or restoration projects. Utilization of any and all rights derived under this lease by the mineral lessee, its agents, successors or assigns, shall not interfere with nor hinder the reasonable surface use by the Department of Natural Resources, its Offices or Commissions, as herein above reserved.

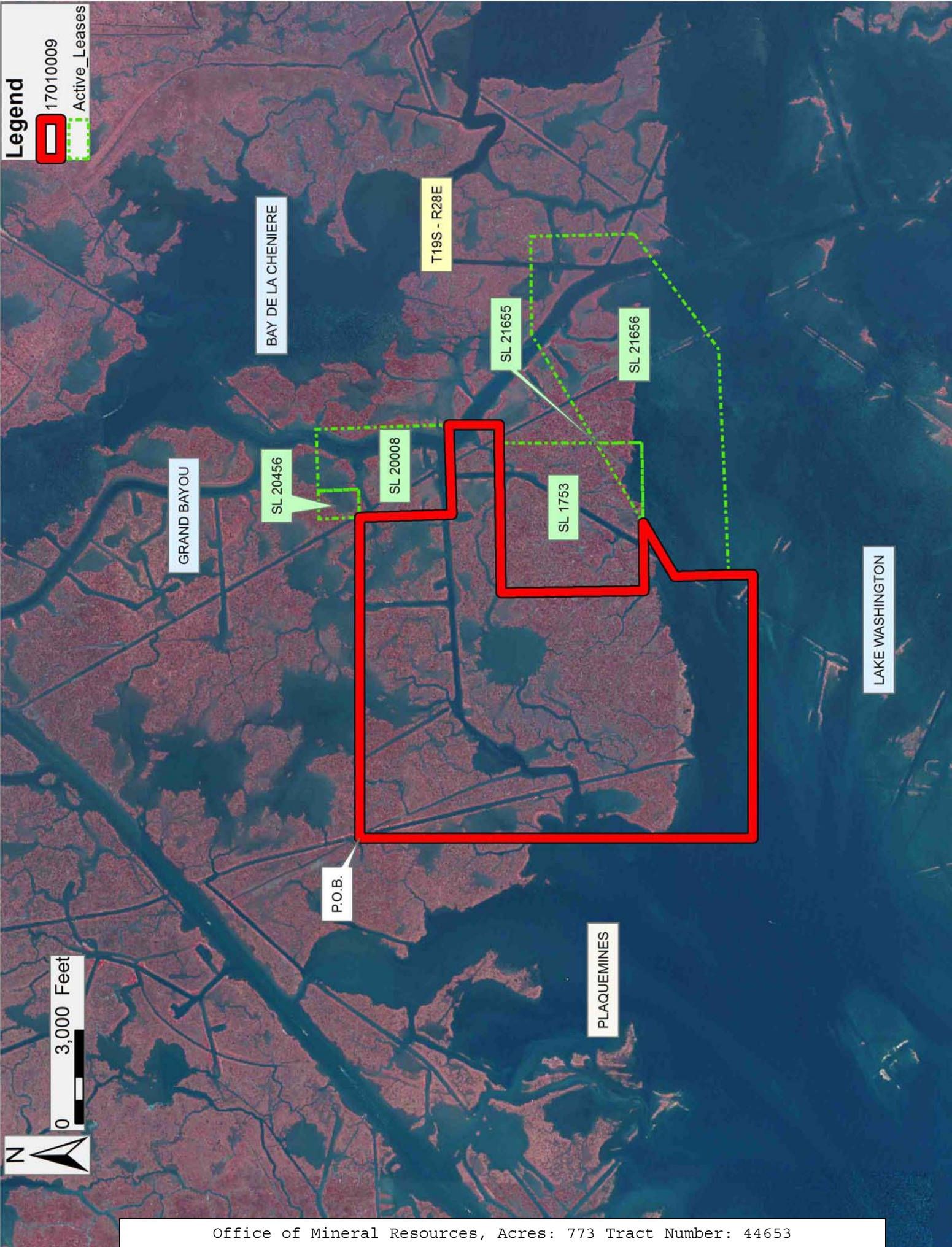
Applicant: OIL LAND SERVICES, INC.

Bidder	Cash Payment	Price/Acre	Rental	Oil	Gas	Other

Legend

17010009

Active_Leases



TRACT 44654 - Portion of Blocks 40, 41, 46, and 47, Ship Shoal Area, Terrebonne Parish, Louisiana

All of the lands now or formerly constituting the beds and bottoms of all water bodies of every nature and description as to which title is vested in the State of Louisiana, together with all islands arising therein and other lands formed by accretion or by reliction, where allowed by law, excepting tax adjudicated lands, and not presently under mineral lease on January 11, 2017, situated in Terrebonne Parish, Louisiana, and more particularly described as follows: Beginning at a point on the line common to Blocks 46 and 47, Ship Shoal Area, having Coordinates of X = 2,140,400.00 and Y = 136,276.00, said point being on the Louisiana Coastline, as decreed by the Supreme Court of the United States, as determined by a Special Master appointed therein, in litigation styled *United States v. State of Louisiana et al No. 9 Original*, in 1975; thence along said Louisiana Coastline the following: Westerly along a straight line to a point having Coordinates of X = 2,139,529 and Y = 136,276, Northwesterly along a straight line to a point having Coordinates of X = 2,138,231 and Y = 136,387, Northwesterly along a straight line to a point having Coordinates of X = 2,134,210 and Y = 136,726, thence North 8,603.00 feet to a point having Coordinates of X = 2,134,210.00 and Y = 145,329.00; thence East 12,161.00 feet to a point having Coordinates of X = 2,146,371.00 and Y = 145,329.00; thence South 8,837.10 feet to a point on said Coastline having a Coordinate of X = 2,146,371.00 and Y = 136,491.90; thence along said Louisiana Coastline the following: Southwesterly along a straight line to a point having Coordinates of X = 2,143,589 and Y = 136,276, and Westerly along a straight line to the point of beginning, **LESS AND EXCEPT** any portion of the Isles Dernieres Barrier Islands Refuge that lies within the above described tract, containing approximately **2,457 acres**, all as more particularly outlined on a plat on file in the Office of Mineral Resources, Department of Natural Resources. All bearings, distances and coordinates are based on Louisiana Coordinate System of 1927, (North or South Zone), where applicable.

NOTE: The above description of the Tract nominated for the purpose of acquiring a mineral lease or a geophysical agreement has been provided and corrected, where required, exclusively by the nominating party. Any mineral lease or geophysical agreement selected from this Tract and awarded by the Louisiana State Mineral and Energy Board shall be without warranty of any kind, either express, implied or statutory including, but not limited to, title or the implied warranties of merchantability and fitness for a particular purpose.

An error or omission in the nominating party's Tract description may require that a State mineral lease or geophysical agreement be modified, canceled or abrogated due to the existence of conflicting leases, operating agreements, private claims or other future obligations or conditions within the Tract described. In such case, however, the Louisiana State Mineral and Energy Board shall not be obligated to refund any consideration paid by the Lessee prior to such modification,

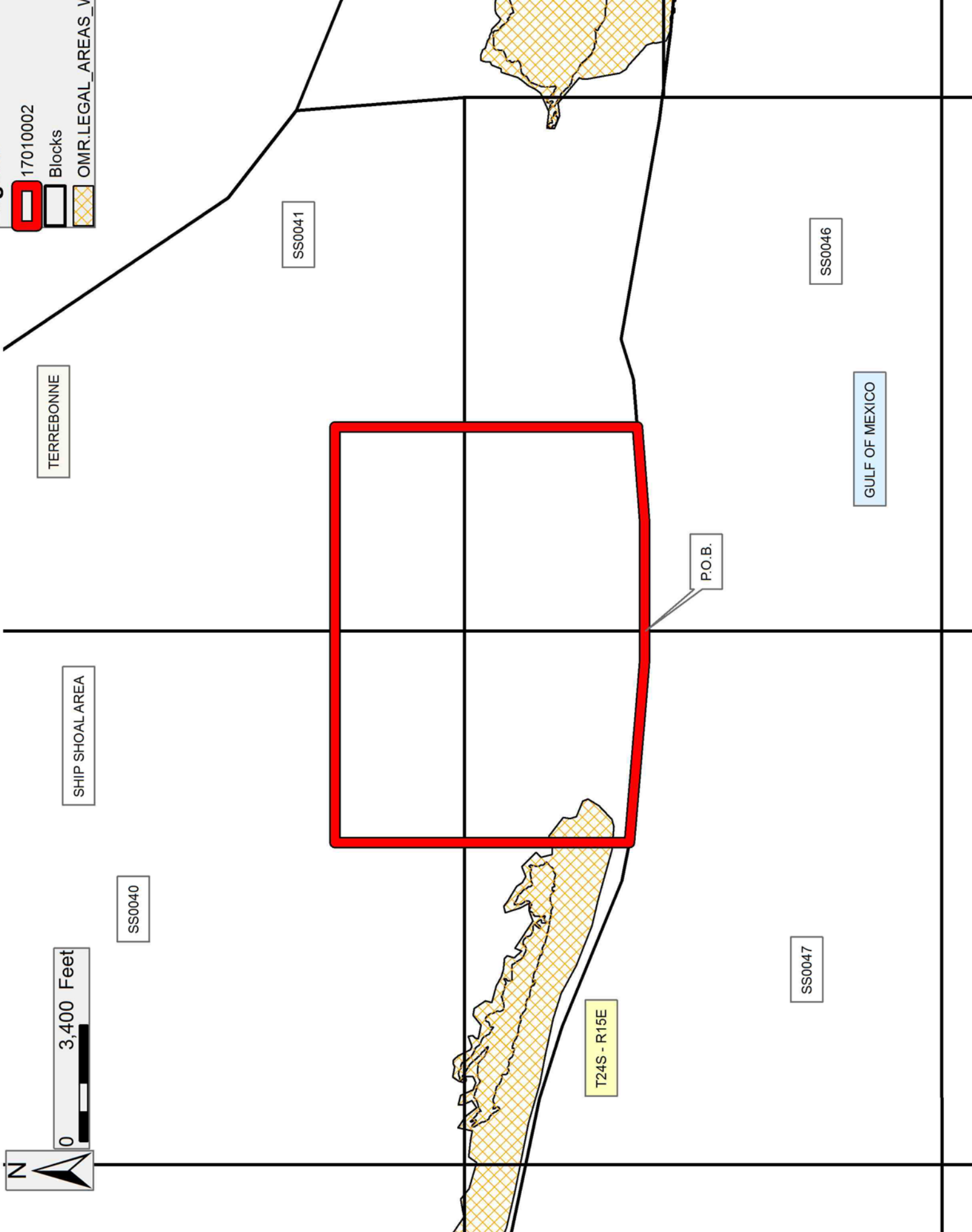
cancellation or abrogation including, but not limited to, bonuses, rentals and royalties.

NOTE: The State of Louisiana does hereby reserve, and this lease shall be subject to, the imprescriptible right of surface use in the nature of a servitude in favor of the Department of Natural Resources, including its Offices and Commissions, for the sole purpose of implementing, constructing, servicing and maintaining approved coastal zone management and/or restoration projects. Utilization of any and all rights derived under this lease by the mineral lessee, its agents, successors or assigns, shall not interfere with nor hinder the reasonable surface use by the Department of Natural Resources, its Offices or Commissions, as herein above reserved.

Applicant: ROBERT A. SCHROEDER, INC.

Bidder	Cash Payment	Price/Acre	Rental	Oil	Gas	Other

17010002
 Blocks
 OMR.LEGAL_AREAS_WI



0 3,400 Feet

TRACT 44655 - Portion of Blocks 41, 44, 45, and 46, Ship Shoal Area, Terrebonne Parish, Louisiana

All of the lands now or formerly constituting the beds and bottoms of all water bodies of every nature and description as to which title is vested in the State of Louisiana, together with all islands arising therein and other lands formed by accretion or by reliction, where allowed by law, excepting tax adjudicated lands, and not presently under mineral lease on January 11, 2017, situated in Terrebonne Parish, Louisiana, and more particularly described as follows: Beginning at the Southwest corner of Block 44, Ship Shoal Area, also being the Northwest corner of Block 45, Ship Shoal Area, having Coordinates of X = 2,156,000.00 and Y = 135,733.00, said point being on the Louisiana Coastline, as decreed by the Supreme Court of the United States, as determined by a Special Master appointed therein, in litigation styled *United States v. State of Louisiana et al No. 9 Original*, in 1975; thence along said Louisiana Coastline the following: Westerly along a straight line to a point having Coordinates of X = 2,155,349 and Y = 135,847, Westerly along a straight line to a point having Coordinates of X = 2,148,929 and Y = 136,962, Westerly along a straight line to a point having Coordinates of X = 2,147,751 and Y = 136,599, and Westerly along a straight line to a point having Coordinates of X = 2,146,371.00 and Y = 136,491.90; thence North 8,837.10 feet to a point having Coordinates of X = 2,146,371.00 and Y = 145,329.00; thence East 9,629.00 feet to a point having Coordinates of X = 2,156,000.00 and Y = 145,329.00; thence South 7,754.00 feet to a point having Coordinates of X = 2,156,000.00 and Y = 137,575.00, thence East 8,477.00 feet to a point having Coordinates of X = 2,164,477.00 and Y = 137,575.00; thence South 2,822.00 feet to a point on said Louisiana Coastline having Coordinates of X = 2,164,477.00 and Y = 134,753.00; thence along said Louisiana Coastline the following: Westerly along a straight line to a point having Coordinates of X = 2,162,430 and Y = 135,112, Westerly along a straight line to a point having Coordinates of X = 2,157,920 and Y = 135,521, and Westerly along a straight line to the point of beginning, **LESS AND EXCEPT** any portion of the Isles Dernieres Barrier Islands Refuge that lies within the above described tract, containing approximately **1,908 acres**, all as more particularly outlined on a plat on file in the Office of Mineral Resources, Department of Natural Resources. All bearings, distances and coordinates are based on Louisiana Coordinate System of 1927, (North or South Zone), where applicable.

NOTE: The above description of the Tract nominated for the purpose of acquiring a mineral lease or a geophysical agreement has been provided and corrected, where required, exclusively by the nominating party. Any mineral lease or geophysical agreement selected from this Tract and awarded by the Louisiana State Mineral and Energy Board shall be without warranty of any kind, either express, implied or statutory including, but not limited to, title or the implied warranties of merchantability and fitness for a particular purpose.

An error or omission in the nominating party's Tract description may require that a State mineral lease or geophysical agreement be modified, canceled or abrogated due to the existence of conflicting leases, operating agreements, private claims or other future obligations or conditions within the Tract described. In such case, however, the Louisiana State Mineral and Energy Board shall not be obligated to refund any consideration paid by the Lessee prior to such modification, cancellation or abrogation including, but not limited to, bonuses, rentals and royalties.

NOTE: The State of Louisiana does hereby reserve, and this lease shall be subject to, the imprescriptible right of surface use in the nature of a servitude in favor of the Department of Natural Resources, including its Offices and Commissions, for the sole purpose of implementing, constructing, servicing and maintaining approved coastal zone management and/or restoration projects. Utilization of any and all rights derived under this lease by the mineral lessee, its agents, successors or assigns, shall not interfere with nor hinder the reasonable surface use by the Department of Natural Resources, its Offices or Commissions, as herein above reserved.

Applicant: ROBERT A. SCHROEDER, INC.

Bidder	Cash Payment	Price/Acre	Rental	Oil	Gas	Other

17010003

OMR.LEGAL_AREAS_WI

Wildlife

Blocks

