

TRACT 44489 - Jefferson Davis Parish, Louisiana

All of the lands now or formerly constituting the beds and bottoms of all water bodies of every nature and description as to which title is vested in the State of Louisiana, together with all islands arising therein and other lands formed by accretion or by reliction, where allowed by law, excepting tax adjudicated lands, and not presently under mineral lease on January 13, 2016, situated in Jefferson Davis Parish, Louisiana, and more particularly described as follows: Beginning at a point having Coordinates of X = 1,462,086.00 and Y = 646,608.00; thence East 4,992.00 feet to a point having Coordinates of X = 1,467,078.00 and Y = 646,608.00; thence South 3,461.00 feet to the Northeast corner of State Lease No. 21340 having Coordinates of X = 1,467,078.00 and Y = 643,147.00; thence West 4,992.00 feet along the Northern boundary of said State Lease No. 21340 to its Northwest corner having Coordinates of X = 1,462,086.00 and Y = 643,147.00; thence North 3,461.00 feet to the point of beginning, containing approximately **29 acres**, all as more particularly outlined on a plat on file in the Office of Mineral Resources, Department of Natural Resources. All bearings, distances and coordinates are based on Louisiana Coordinate System of 1927, (North or South Zone), where applicable.

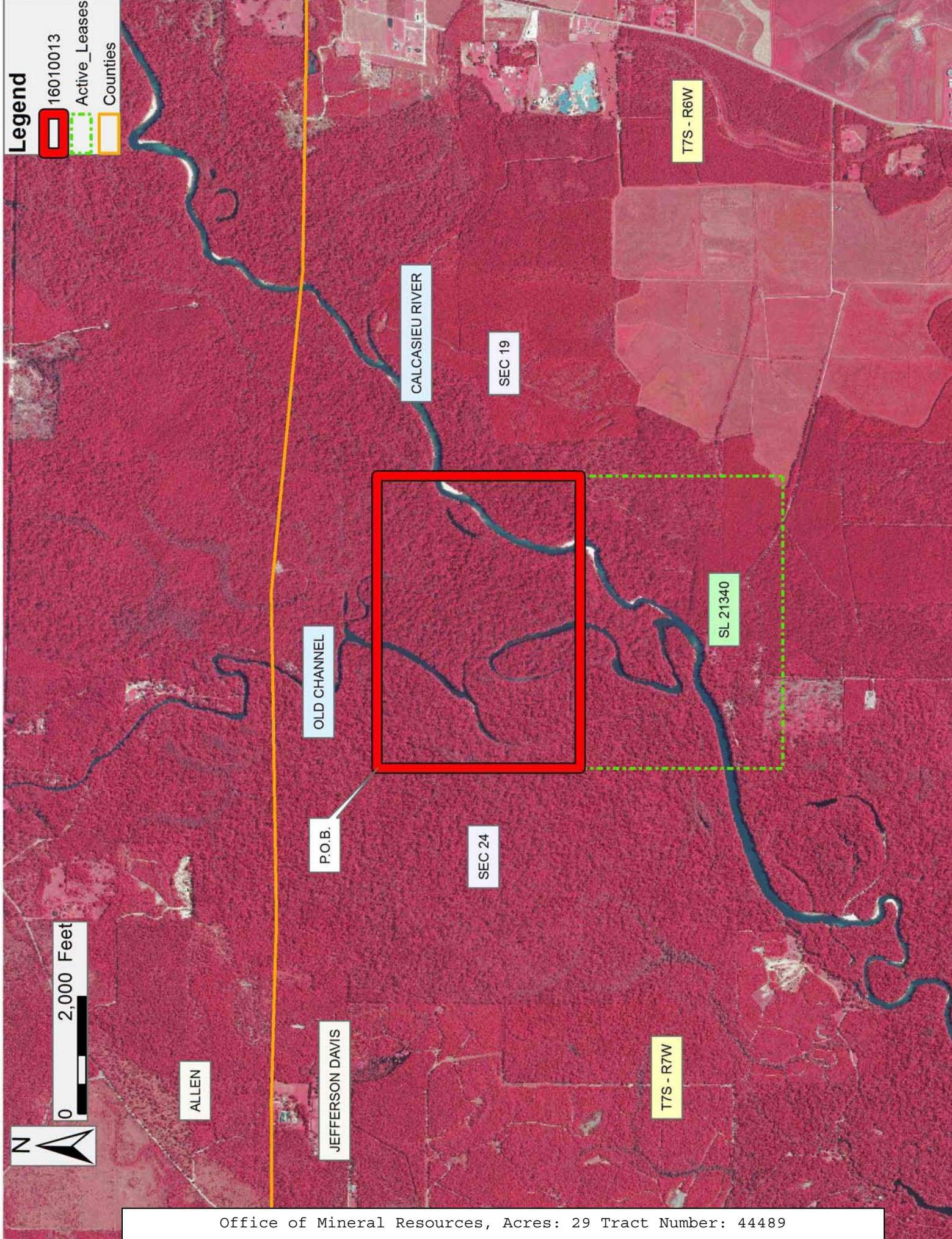
NOTE: The above description of the Tract nominated for the purpose of acquiring a mineral lease or a geophysical agreement has been provided and corrected, where required, exclusively by the nominating party. Any mineral lease or geophysical agreement selected from this Tract and awarded by the Louisiana State Mineral and Energy Board shall be without warranty of any kind, either express, implied or statutory including, but not limited to, title or the implied warranties of merchantability and fitness for a particular purpose.

An error or omission in the nominating party's Tract description may require that a State mineral lease or geophysical agreement be modified, canceled or abrogated due to the existence of conflicting leases, operating agreements, private claims or other future obligations or conditions within the Tract described. In such case, however, the Louisiana State Mineral and Energy Board shall not be obligated to refund any consideration paid by the Lessee prior to such modification, cancellation or abrogation including, but not limited to, bonuses, rentals and royalties.

NOTE: A portion of this tract is located on or adjacent to a Louisiana designated Natural and Scenic River. The applicant must obtain authorization from the Louisiana Department of Wildlife and Fisheries, Scenic Rivers Program prior to initiating any activities within or adjacent to the river, including, but not limited to, crossings by roads and pipelines, well sites, production facilities and water withdrawals.

Applicant: ACADIAN LAND SERVICES, L.L.C.

Bidder	Cash Payment	Price/Acre	Rental	Oil	Gas	Other



Legend

- 16010013
- Active_Leases
- Counties

0 2,000 Feet



ALLEN

JEFFERSON DAVIS

P.O.B.

OLD CHANNEL

CALCASIEU RIVER

SEC 24

SEC 19

T7S - R7W

T7S - R6W

SL 21340

TRACT 44490 - Terrebonne Parish, Louisiana

All of the lands now or formerly constituting the beds and bottoms of all water bodies of every nature and description as to which title is vested in the State of Louisiana, together with all islands arising therein and other lands formed by accretion or by reliction, where allowed by law, excepting tax adjudicated lands, and not presently under mineral lease on January 13, 2016, situated in Terrebonne Parish, Louisiana, and more particularly described as follows: Beginning at a point having Coordinates of X = 2,161,812.10 and Y = 336,506.71; thence East 3,644.28 feet to a point having Coordinates of X = 2,165,456.38 and Y = 336,506.71; thence South 4,249.48 feet to a point having Coordinates of X = 2,165,456.38 and Y = 332,257.22; thence West 3,644.28 feet to a point having Coordinates of X = 2,161,812.10 and Y = 332,257.22; thence North 4,249.48 feet to the point of beginning, **LESS AND EXCEPT** any right, title, and interest in lands owned by and not under lease from the State of Louisiana, on behalf of the Terrebonne Parish School Board, situated in Section 16, Township 17 South, Range 16 East, Terrebonne Parish, Louisiana, contained within the above described tract, containing **10 acres**, all as more particularly outlined on a plat on file in the Office of Mineral Resources, Department of Natural Resources. All bearings, distances and coordinates are based on Louisiana Coordinate System of 1927, (North or South Zone), where applicable.

NOTE: The above description of the Tract nominated for the purpose of acquiring a mineral lease or a geophysical agreement has been provided and corrected, where required, exclusively by the nominating party. Any mineral lease or geophysical agreement selected from this Tract and awarded by the Louisiana State Mineral and Energy Board shall be without warranty of any kind, either express, implied or statutory including, but not limited to, title or the implied warranties of merchantability and fitness for a particular purpose.

An error or omission in the nominating party's Tract description may require that a State mineral lease or geophysical agreement be modified, canceled or abrogated due to the existence of conflicting leases, operating agreements, private claims or other future obligations or conditions within the Tract described. In such case, however, the Louisiana State Mineral and Energy Board shall not be obligated to refund any consideration paid by the Lessee prior to such modification, cancellation or abrogation including, but not limited to, bonuses, rentals and royalties.

NOTE: The State of Louisiana does hereby reserve, and this lease shall be subject to, the imprescriptible right of surface use in the nature of a servitude in favor of the Department of Natural Resources, including its Offices and Commissions, for the sole purpose of implementing, constructing, servicing and maintaining approved coastal zone management and/or restoration projects. Utilization of any and all rights derived under this lease by the mineral lessee, its agents, successors or assigns,

shall not interfere with nor hinder the reasonable surface use by the Department of Natural Resources, its Offices or Commissions, as herein above reserved.

Applicant: RELIATERRE, L.L.C.

Bidder	Cash Payment	Price/Acre	Rental	Oil	Gas	Other

Legend



TERREBONNE



BAYOU BLACK

P.O.B.

T17S - R16E

0 1,500 Feet



TRACT 44491 - Jefferson Parish, Louisiana

All of the lands now or formerly constituting the beds and bottoms of all water bodies of every nature and description as to which title is vested in the State of Louisiana, together with all islands arising therein and other lands formed by accretion or by reliction, where allowed by law, excepting tax adjudicated lands, and not presently under mineral lease on January 13, 2016, situated in Jefferson Parish, Louisiana, and more particularly described as follows: Beginning at the most Southerly Southwest corner of State Lease No. 21343, having Coordinates of X = 2,415,963.34 and Y = 329,950.00; thence South 8,781.00 feet to a point having Coordinates of X = 2,415,963.34 and Y = 321,169.00; thence West 6,043.34 feet to the Northeast corner of State Lease No. 18441, having Coordinates of X = 2,409,920.00 and Y = 321,169.00; thence West 4,323.00 feet along the Northern boundary of said State Lease No. 18441 to its Northwest corner, having Coordinates of X = 2,405,597.00 and Y = 321,169.00; thence Northeasterly approximately 2,743 feet to the most Southern point of State Lease No. 21542, also being a point on a Western boundary of State Lease No. 356, as amended; thence Northeasterly approximately 854 feet along said boundary of said State Lease Nos. 21542 and 356 to the Southeast corner of State Lease No. 21541, having a Coordinate of Y = 324,689.79; thence Northerly along said boundary of said State Lease Nos. 21541, 21542 and 356 to the Northeast corner of said State Lease No. 21541; thence Northeasterly approximately 5,496 feet to a point on the East boundary of said State Lease No. 356 and 21542, having Coordinates of X = 2,410,883.30 and Y = 332,817.73; thence Northeasterly along said boundaries of said State Lease Nos. 356 and 21542 to the most Westerly point on the West boundary of said State Lease No. 21343, having a Coordinate of Y = 333,140.00; thence along the boundary of said State Lease No. 21343, the following courses and distances: Easterly to a point having Coordinates of X = 2,415,963.34 and Y = 333,140.00, and South 3,190.00 feet to the point of beginning, **LESS AND EXCEPT** all that portion, if any, of State Lease Nos. 21343 and 21541 that may fall within the above described tract; and **LESS AND EXCEPT** all those portions of State Lease No. 356, as amended, and State Lease No. 21542 that lie within the above described tract, and **LESS AND EXCEPT** in its entirety, the following lease that lies totally within the above described tract: State Lease No. 10439, as amended, being more fully described as follows: Beginning at a point having Coordinates of X = 2,408,341.08 and Y = 327,055.82; thence along the boundaries of said State Lease No.10439 the following courses: North 86 degrees 17 minutes 30 seconds East 59.70 feet to a point having Coordinates of X = 2,408,400.66 and Y = 327,059.68; South 00 degrees 00 minutes 02 seconds East 597.52 feet to a point having Coordinates of X = 2,408,400.66 and Y = 326,462.16; South 13 degrees 12 minutes 29 seconds West 243.60 feet to a point having Coordinates of X = 2,408,345.00 and Y = 326,225.01; South 14 degrees 44 minutes 37 seconds West 432.23 feet to a point having Coordinates of X = 2,408,235.00 and Y = 325,807.01; South 16 degrees 55 minutes 39 seconds West 240.42 feet to a point having Coordinates of X = 2,408,165.00 and Y = 325,577.00; South 18 degrees 55 minutes 29 seconds West 148.00 feet to a point having Coordinates of X =

2,408,117.00 and Y = 325,437.00; South 45 degrees 56 minutes 21 seconds West 86.28 feet to a point having Coordinates of X = 2,408,055.00 and Y = 325,377.00; South 54 degrees 46 minutes 57 seconds West 104.04 feet to a point having Coordinates of X = 2,407,970.00 and Y = 325,317.00; South 59 degrees 02 minutes 10 seconds West 110.79 feet to a point having Coordinates of X = 2,407,875.00 and Y = 325,260.00; South 68 degrees 55 minutes 52 seconds West 135.83 feet to a point having Coordinates of X = 2,407,748.25 and Y = 325,211.17; South 74 degrees 08 minutes 14 seconds West 315.26 feet to a point having Coordinates of X = 2,407,445.00 and Y = 325,125.00; South 78 degrees 07 minutes 51 seconds West 301.44 feet to a point having Coordinates of X = 2,407,150.00 and Y = 325,063.00; South 80 degrees 34 minutes 50 seconds West 219.97 feet to a point having Coordinates of X = 2,406,933.00 and Y = 325,027.00; South 82 degrees 57 minutes 43 seconds West 70.91 feet to a point having Coordinates of X = 2,406,862.62 and Y = 325,018.31; North 30 degrees 18 minutes 40 seconds East 500.05 feet to a point having Coordinates of X = 2,407,114.99 and Y = 325,450.01; North 28 degrees 29 minutes 44 seconds East 280.33 feet to a point having Coordinates of X = 2,407,248.74 and Y = 325,696.37; Northeasterly along an arc to the right having a radius of 1,223.25 feet and a long chord of North 47 degrees 17 minutes 24 seconds East 317.66 feet to a point having Coordinates of X = 2,407,482.15 and Y = 325,911.84; Northeasterly along an arc to the left having a radius of 1,768.42 feet and a long chord of North 36 degrees 03 minutes 17 seconds East 622.15 feet to a point having Coordinates of X = 2,407,848.32 and Y = 326,414.82; Northeasterly along an arc to the right having a radius of 964.84 feet and a long chord of North 32 degrees 42 minutes 17 seconds East 497.55 feet to a point having Coordinates of X = 2,408,117.15 and Y = 326,833.49 and North 45 degrees 12 minutes 19 seconds East 315.56 feet to the point of beginning. The above described tract containing approximately **159 acres**, all as more particularly outlined on a plat on file in the Office of Mineral Resources, Department of Natural Resources. All bearings, distances and coordinates are based on Louisiana Coordinate System of 1927, (North or South Zone), where applicable.

NOTE: The above description of the Tract nominated for the purpose of acquiring a mineral lease or a geophysical agreement has been provided and corrected, where required, exclusively by the nominating party. Any mineral lease or geophysical agreement selected from this Tract and awarded by the Louisiana State Mineral and Energy Board shall be without warranty of any kind, either express, implied or statutory including, but not limited to, title or the implied warranties of merchantability and fitness for a particular purpose.

An error or omission in the nominating party's Tract description may require that a State mineral lease or geophysical agreement be modified, canceled or abrogated due to the existence of conflicting leases, operating agreements, private claims or other future obligations or conditions within the Tract described. In such case, however, the Louisiana State Mineral and Energy Board shall not be obligated to refund

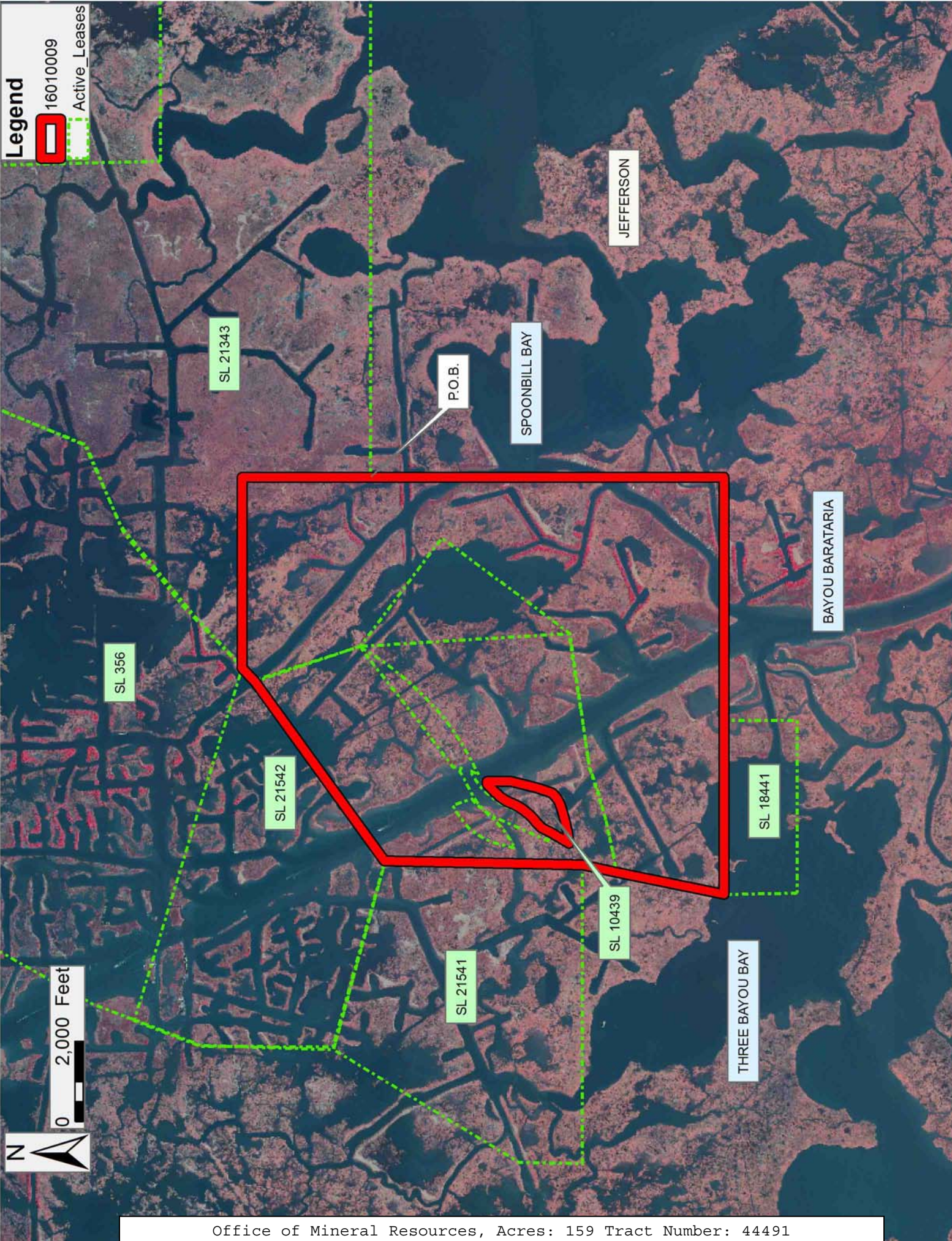
any consideration paid by the Lessee prior to such modification, cancellation or abrogation including, but not limited to, bonuses, rentals and royalties.

NOTE: The State of Louisiana does hereby reserve, and this lease shall be subject to, the imprescriptible right of surface use in the nature of a servitude in favor of the Department of Natural Resources, including its Offices and Commissions, for the sole purpose of implementing, constructing, servicing and maintaining approved coastal zone management and/or restoration projects. Utilization of any and all rights derived under this lease by the mineral lessee, its agents, successors or assigns, shall not interfere with nor hinder the reasonable surface use by the Department of Natural Resources, its Offices or Commissions, as herein above reserved.

Applicant: THEOPHILUS OIL, GAS & LAND SERVICES, LLC

Bidder	Cash Payment	Price/Acre	Rental	Oil	Gas	Other

Legend
16010009
Active_Leases



TRACT 44492 - Jefferson and Plaquemines Parishes, Louisiana

All of the lands now or formerly constituting the beds and bottoms of all water bodies of every nature and description as to which title is vested in the State of Louisiana, together with all islands arising therein and other lands formed by accretion or by reliction, where allowed by law, excepting tax adjudicated lands, and not presently under mineral lease on January 13, 2016, situated in Jefferson and Plaquemines Parishes, Louisiana, and more particularly described as follows: Beginning at the most Southerly Southwest corner of State Lease No. 21343, having Coordinates of X = 2,415,963.34 and Y = 329,950.00; thence East 13,000.45 feet along the Southern boundary of said State Lease No. 21343 to its most Southerly Southeast corner, having Coordinates of X = 2,428,963.79 and Y = 329,950.00; thence South 8,781.00 feet to a point having Coordinates of X = 2,428,963.79 and Y = 321,169.00; thence West 13,000.45 feet to a point having Coordinates of X = 2,415,963.34 and Y = 321,169.00; thence North 8,781.00 feet to the point of beginning, containing approximately **1,530 acres**, all as more particularly outlined on a plat on file in the Office of Mineral Resources, Department of Natural Resources. All bearings, distances and coordinates are based on Louisiana Coordinate System of 1927, (North or South Zone), where applicable.

NOTE: The above description of the Tract nominated for the purpose of acquiring a mineral lease or a geophysical agreement has been provided and corrected, where required, exclusively by the nominating party. Any mineral lease or geophysical agreement selected from this Tract and awarded by the Louisiana State Mineral and Energy Board shall be without warranty of any kind, either express, implied or statutory including, but not limited to, title or the implied warranties of merchantability and fitness for a particular purpose.

An error or omission in the nominating party's Tract description may require that a State mineral lease or geophysical agreement be modified, canceled or abrogated due to the existence of conflicting leases, operating agreements, private claims or other future obligations or conditions within the Tract described. In such case, however, the Louisiana State Mineral and Energy Board shall not be obligated to refund any consideration paid by the Lessee prior to such modification, cancellation or abrogation including, but not limited to, bonuses, rentals and royalties.

NOTE: The State of Louisiana does hereby reserve, and this lease shall be subject to, the imprescriptible right of surface use in the nature of a servitude in favor of the Department of Natural Resources, including its Offices and Commissions, for the sole purpose of implementing, constructing, servicing and maintaining approved coastal zone management and/or restoration projects. Utilization of any and all rights derived under this lease by the mineral lessee, its agents, successors or assigns, shall not interfere with nor hinder the reasonable surface use by the

Department of Natural Resources, its Offices or Commissions, as herein above reserved.

Applicant: THEOPHILUS OIL, GAS & LAND SERVICES, LLC

Bidder	Cash Payment	Price/Acre	Rental	Oil	Gas	Other

Legend

- 16010010
- Active_Leases
- Counties



TRACT 44493 - Jefferson Parish, Louisiana

All of the lands now or formerly constituting the beds and bottoms of all water bodies of every nature and description as to which title is vested in the State of Louisiana, together with all islands arising therein and other lands formed by accretion or by reliction, where allowed by law, excepting tax adjudicated lands, and not presently under mineral lease on January 13, 2016, situated in Jefferson Parish, Louisiana, and more particularly described as follows: Beginning at the Northeast corner of State Lease No. 18441, having Coordinates of X = 2,409,920.00 and Y = 321,169.00; thence East 12,543.34 feet to a point having Coordinates of X = 2,422,463.34 and Y = 321,169.00; thence South 3,639.00 feet to a point having Coordinates of X = 2,422,463.34 and Y = 317,530.00; thence West 12,543.34 feet to a point having Coordinates of X = 2,409,920.00 and Y = 317,530.00; thence North 1,820.00 feet to the Southeast corner of said State Lease No. 18441, having Coordinates of X = 2,409,920.00 and Y = 319,350.00; thence North 1,819.00 feet along the East boundary of said State Lease No. 18441 to the point of beginning, containing approximately **263 acres**, all as more particularly outlined on a plat on file in the Office of Mineral Resources, Department of Natural Resources. All bearings, distances and coordinates are based on Louisiana Coordinate System of 1927, (North or South Zone), where applicable.

NOTE: The above description of the Tract nominated for the purpose of acquiring a mineral lease or a geophysical agreement has been provided and corrected, where required, exclusively by the nominating party. Any mineral lease or geophysical agreement selected from this Tract and awarded by the Louisiana State Mineral and Energy Board shall be without warranty of any kind, either express, implied or statutory including, but not limited to, title or the implied warranties of merchantability and fitness for a particular purpose.

An error or omission in the nominating party's Tract description may require that a State mineral lease or geophysical agreement be modified, canceled or abrogated due to the existence of conflicting leases, operating agreements, private claims or other future obligations or conditions within the Tract described. In such case, however, the Louisiana State Mineral and Energy Board shall not be obligated to refund any consideration paid by the Lessee prior to such modification, cancellation or abrogation including, but not limited to, bonuses, rentals and royalties.

NOTE: The State of Louisiana does hereby reserve, and this lease shall be subject to, the imprescriptible right of surface use in the nature of a servitude in favor of the Department of Natural Resources, including its Offices and Commissions, for the sole purpose of implementing, constructing, servicing and maintaining approved coastal zone management and/or restoration projects. Utilization of any and all rights derived under this lease by the mineral lessee, its agents, successors or assigns, shall not interfere with nor hinder the reasonable surface use by the

Department of Natural Resources, its Offices or Commissions, as herein above reserved.

Applicant: THEOPHILUS OIL, GAS & LAND SERVICES, LLC

Bidder	Cash Payment	Price/Acre	Rental	Oil	Gas	Other

Legend
16010011
Active_Leases

