

TRACT 44210 - Lafayette Parish, Louisiana

A certain Tract of land, excluding the beds and bottoms of all navigable waters, belonging to and not presently under mineral lease from Lafayette City-Parish Consolidated Government on January 14, 2015, being more fully described as follows: Lacy Lane from its intersection with Whitmore Road to its terminus, situated in Section 11, Township 9 South, Range 3 East containing approximately **1.160 acres**, all as more particularly outlined on a plat on file in the Office of Mineral Resources, Department of Natural Resources. The description is based on information provided by the State Agency regarding location and ownership of surface and mineral rights. All bearings, distances and coordinates, if applicable, are based on Louisiana Coordinate System of 1927, (North or South Zone).

NOTE: The above description of the Tract nominated for lease has been provided and corrected, where required, exclusively by the nomination party. Any mineral lease selected from this Tract and awarded by the Louisiana State Mineral and Energy Board shall be without warranty of any kind, either express, implied, or statutory, including, but not limited to, the implied warranties of merchantability and fitness for a particular purpose. Should the mineral lease awarded by the Louisiana State Mineral and Energy Board be subsequently modified, cancelled or abrogated due to the existence of conflicting leases, operating agreements, private claims or other future obligations or conditions which may affect all or any portion of the leased Tract, it shall not relieve the Lessee of the obligation to pay any bonus due thereon to the Louisiana State Mineral and Energy Board, nor shall the Louisiana State Mineral and Energy Board be obligated to refund any consideration paid by the Lessor prior to such modification, cancellation, or abrogation, including, but not limited to, bonuses, rentals and royalties.

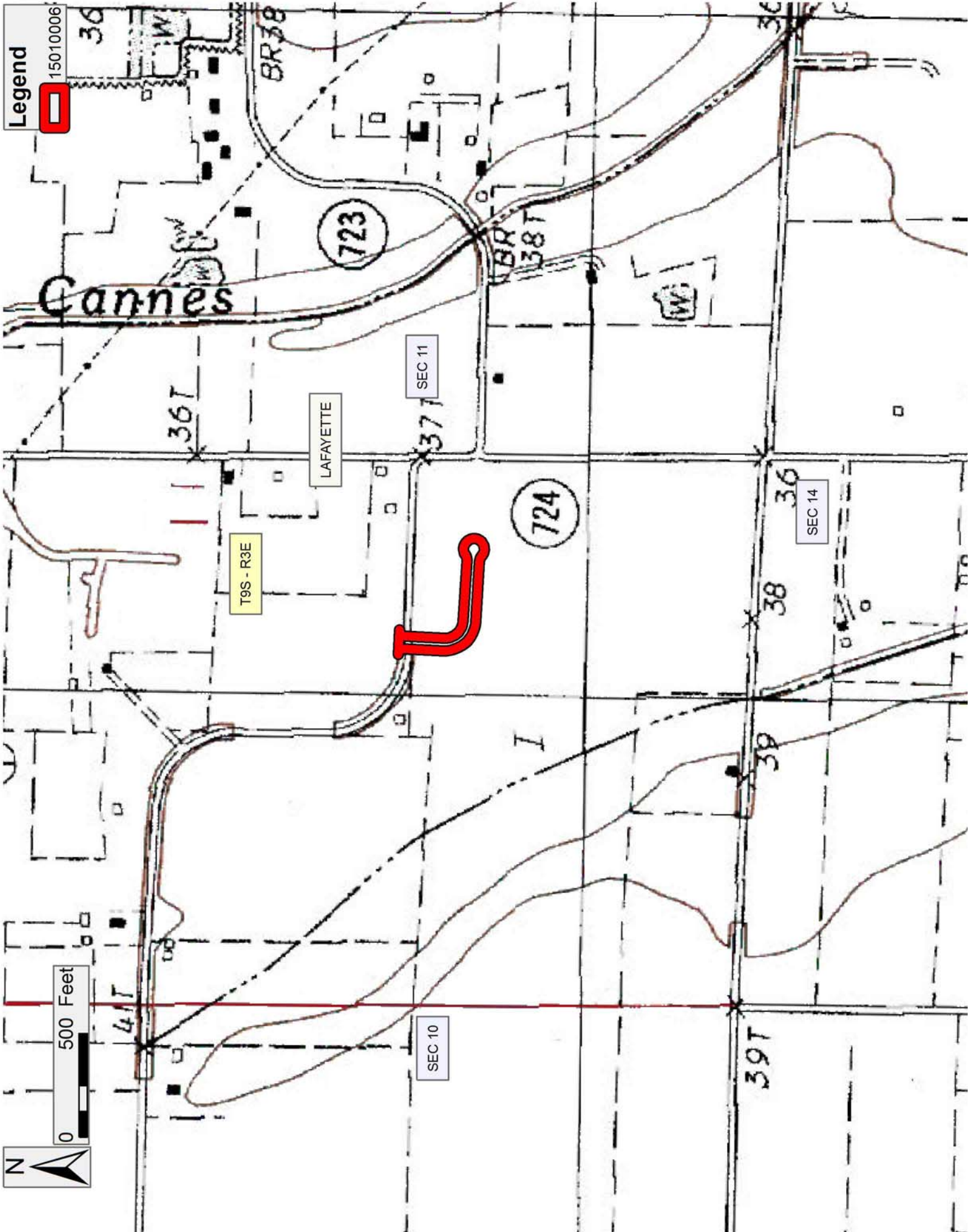
NOTE: There shall be no drilling or surface operations (including particularly geophysical operations) on the lands vested in the Lafayette City-Parish Government.

NOTE: Lessee, or Assignee, shall be required to obtain consent from the Lafayette City-Parish Government prior to the execution of any assignment, sublease or other transfer.

NOTE: Lessee shall at all times comply with all applicable environmental and wetlands laws and regulations promulgated by the federal government, the State of Louisiana, and/or any department, office, or agency thereof, and Lessee shall obtain all licenses and/or permits required under such laws and regulations.

Applicant: LUKE BOURQUE to Agency and by Resolution from the Lafayette City-Parish Consolidated Government authorizing the Mineral Board to act in its behalf

Bidder	Cash Payment	Price/ Acre	Rental	Oil	Gas	Other



TRACT 44211 - Lafayette Parish, Louisiana

A certain Tract of land, excluding the beds and bottoms of all navigable waters, belonging to and not presently under mineral lease from Lafayette City-Parish Consolidated Government on January 14, 2015, being more fully described as follows: A certain tract of land located in Section 14, Township 9 South, Range 3 East, as shown on plat of survey by Kermit L. Hebert, Land Surveyor, dated December 5, 1978, containing approximately 0.155 gross acres and **.052 net acres**, all as more particularly outlined on a plat on file in the Office of Mineral Resources, Department of Natural Resources. The description is based on information provided by the State Agency regarding location and ownership of surface and mineral rights. All bearings, distances and coordinates, if applicable, are based on Louisiana Coordinate System of 1927, (North or South Zone).

NOTE: The above description of the Tract nominated for lease has been provided and corrected, where required, exclusively by the nomination party. Any mineral lease selected from this Tract and awarded by the Louisiana State Mineral and Energy Board shall be without warranty of any kind, either express, implied, or statutory, including, but not limited to, the implied warranties of merchantability and fitness for a particular purpose. Should the mineral lease awarded by the Louisiana State Mineral and Energy Board be subsequently modified, cancelled or abrogated due to the existence of conflicting leases, operating agreements, private claims or other future obligations or conditions which may affect all or any portion of the leased Tract, it shall not relieve the Lessee of the obligation to pay any bonus due thereon to the Louisiana State Mineral and Energy Board, nor shall the Louisiana State Mineral and Energy Board be obligated to refund any consideration paid by the Lessor prior to such modification, cancellation, or abrogation, including, but not limited to, bonuses, rentals and royalties.

NOTE: There shall be no drilling or surface operations (including particularly geophysical operations) on the lands vested in the Lafayette City-Parish Government.

NOTE: Lessee, or Assignee, shall be required to obtain consent from the Lafayette City-Parish Government prior to the execution of any assignment, sublease or other transfer.

NOTE: Lessee shall at all times comply with all applicable environmental and wetlands laws and regulations promulgated by the federal government, the State of Louisiana, and/or any department, office, or agency thereof, and Lessee shall obtain all licenses and/or permits required under such laws and regulations.

Applicant: LUKE BOURQUE to Agency and by Resolution from the Lafayette City-Parish Consolidated Government authorizing the Mineral Board to act in its behalf

Bidder	Cash Payment	Price/ Acre	Rental	Oil	Gas	Other



Legend

15010005

SEC 12

SEC 13

T9S - R3E

LAFAYETTE

SEC 11

SEC 14



TRACT 44212 - Vermilion Parish, Louisiana

A certain Tract of land, excluding the beds and bottoms of all navigable waters, belonging to and not presently under mineral lease from Louisiana Department Of Transportation And Development on January 14, 2015, being more fully described as follows: Beginning at a point having Coordinates of X = 1,755,110.00 and Y = 479,970.00; thence East 13,360 feet to a point having Coordinates of X = 1,768,470.00 and Y = 479,970.00; thence South 10,575 feet to a point having Coordinates of X = 1,768,470.00 and Y = 469,395.00; thence West 13,360 feet to a point having Coordinates of X = 1,755,110.00 and Y = 469,395.00; thence North 10,575 feet to the point of beginning, containing approximately **32 acres**, all as more particularly outlined on a plat on file in the Office of Mineral Resources, Department of Natural Resources. The description is based on information provided by the State Agency regarding location and ownership of surface and mineral rights. All bearings, distances and coordinates, if applicable, are based on Louisiana Coordinate System of 1927, (North or South Zone).

NOTE: The above description of the Tract nominated for lease has been provided and corrected, where required, exclusively by the nomination party. Any mineral lease selected from this Tract and awarded by the Louisiana State Mineral and Energy Board shall be without warranty of any kind, either express, implied, or statutory, including, but not limited to, the implied warranties of merchantability and fitness for a particular purpose. Should the mineral lease awarded by the Louisiana State Mineral and Energy Board be subsequently modified, cancelled or abrogated due to the existence of conflicting leases, operating agreements, private claims or other future obligations or conditions which may affect all or any portion of the leased Tract, it shall not relieve the Lessee of the obligation to pay any bonus due thereon to the Louisiana State Mineral and Energy Board, nor shall the Louisiana State Mineral and Energy Board be obligated to refund any consideration paid by the Lessor prior to such modification, cancellation, or abrogation, including, but not limited to, bonuses, rentals and royalties.

NOTE: No surface operations will be performed on the property.

Applicant: SUNCOAST LAND SERVICES, INC. to Agency and by Resolution from

Bidder	Cash Payment	Price/ Acre	Rental	Oil	Gas	Other

the Louisiana Department Of Transportation And Development authorizing the Mineral Board to act in its behalf

