

TRACT 44205 - Terrebonne Parish, Louisiana

All of the lands now or formerly constituting the beds and bottoms of all water bodies of every nature and description as to which title is vested in the State of Louisiana, together with all islands arising therein and other lands formed by accretion or by reliction, where allowed by law, excepting tax adjudicated lands, and not presently under mineral lease on January 14, 2015, situated in Terrebonne Parish, Louisiana, and more particularly described as follows: Beginning at a point having Coordinates of X = 2,193,375.00 and Y = 163,282.00; thence East 11,513.00 feet to a point having Coordinates of X = 2,204,888.00 and Y = 163,282.00; thence South 3,381.78 feet to a point having Coordinates of X = 2,204,888.00 and Y = 159,900.22; thence East 3,853.53 feet to the Northwest corner of State Lease No. 19477 having Coordinates of X = 2,208,741.53 and Y = 159,900.22; thence South 00 degrees 20 minutes 05 seconds East 309.30 feet along the boundary of said State Lease No. 19477 to its Southwest corner, also being a corner of State Lease No. 188, as amended having Coordinates of X = 2,208,743.34 and Y = 159,590.93; thence South 00 degrees 20 minutes 05 seconds East 2,170.71 feet along the boundary of said State Lease No. 188 to the Northernmost corner of State Lease No. 21101 having Coordinates of X = 2,208,756.02 and Y = 157,420.26; thence along the boundary of said State Lease No. 21101 the following courses and distances: South 35 degrees 26 minutes 42 seconds West 1,019.13 feet to a point having Coordinates of X = 2,208,165.00 and Y = 156,590.00 and South 00 degrees 00 minutes 15 seconds East 1,973.24 feet to its Southwest corner, also being a point on the boundary of said State Lease No. 188 having Coordinates of X = 2,208,165.14 and Y = 154,616.76; thence along the boundary of said State Lease No. 199 the following courses and distances: South 89 degrees 39 minutes 55 seconds West 1,929.65 feet to a point having Coordinates of X = 2,206,235.52 and Y = 154,605.49 and South 89 degrees 39 minutes 55 seconds West 2,743.10 feet to its Southernmost Northwest corner having Coordinates of X = 2,203,492.47 and Y = 154,589.47; thence North 1,773.53 feet to a point having Coordinates of X = 2,203,492.47 and Y = 156,363.00; thence West 10,117.47 feet to a point having Coordinates of X = 2,193,375.00 and Y = 156,363.00; thence North 6,919.00 feet to the point of beginning, containing approximately **2,322.46 acres**, all as more particularly outlined on a plat on file in the Office of Mineral Resources, Department of Natural Resources. All bearings, distances and coordinates are based on Louisiana Coordinate System of 1927, (North or South Zone), where applicable.

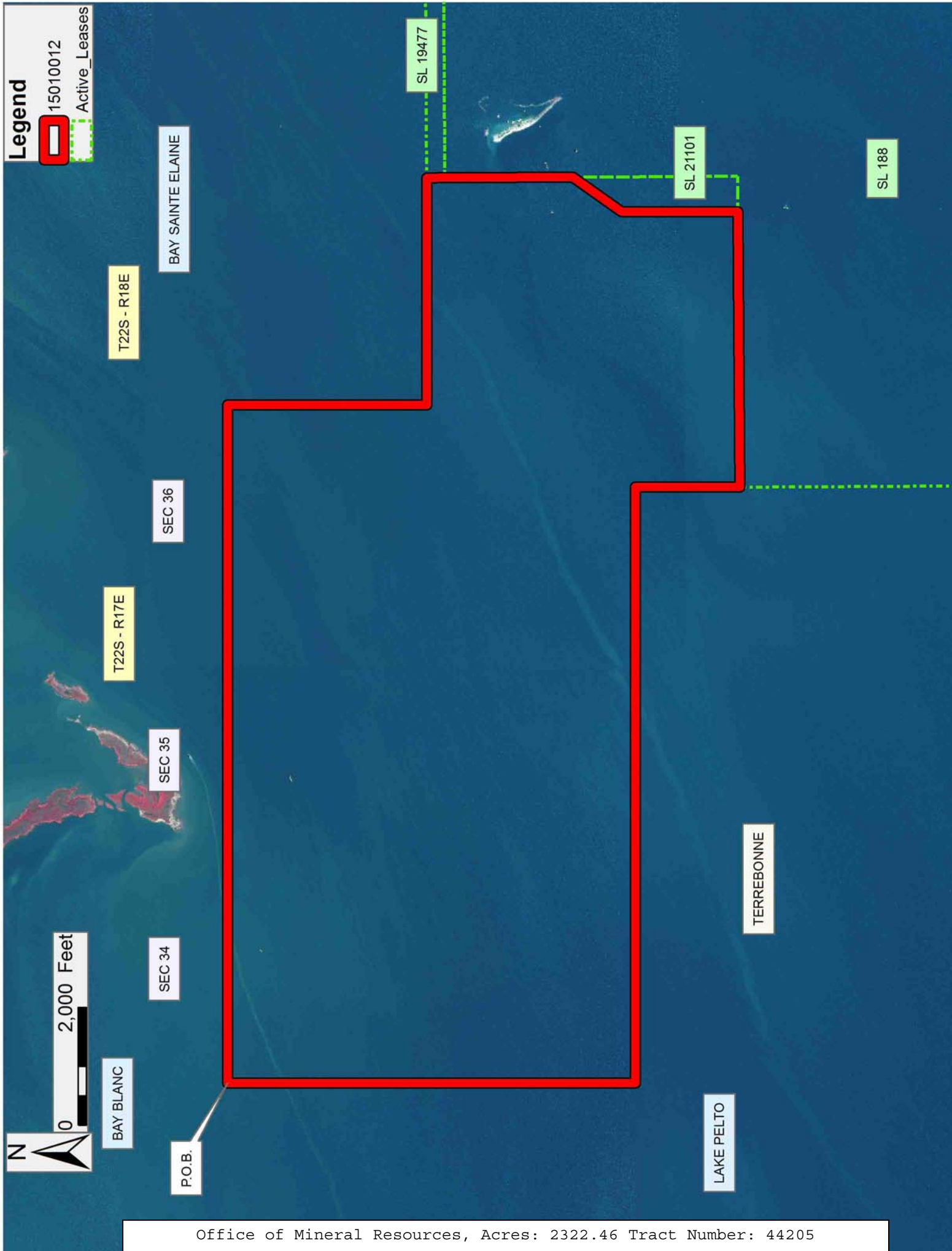
NOTE: The above description of the Tract nominated for lease has been provided and corrected, where required, exclusively by the nomination party. Any mineral lease selected from this Tract and awarded by the Louisiana State Mineral and Energy Board shall be without warranty of any kind, either express, implied, or statutory, including, but not limited to, the implied warranties of merchantability and fitness for a particular purpose. Should the mineral lease awarded by the Louisiana State Mineral and Energy Board be subsequently modified, cancelled or abrogated due to the existence of conflicting leases, operating agreements, private claims

or other future obligations or conditions which may affect all or any portion of the leased Tract, it shall not relieve the Lessee of the obligation to pay any bonus due thereon to the Louisiana State Mineral and Energy Board, nor shall the Louisiana State Mineral and Energy Board be obligated to refund any consideration paid by the Lessor prior to such modification, cancellation, or abrogation, including, but not limited to, bonuses, rentals and royalties.

NOTE: The State of Louisiana does hereby reserve, and this lease shall be subject to, the imprescriptible right of surface use in the nature of a servitude in favor of the Department of Natural Resources, including its Offices and Commissions, for the sole purpose of implementing, constructing, servicing and maintaining approved coastal zone management and/or restoration projects. Utilization of any and all rights derived under this lease by the mineral lessee, its agents, successors or assigns, shall not interfere with nor hinder the reasonable surface use by the Department of Natural Resources, its Offices or Commissions, as herein above reserved.

Applicant: ALLEN & KIRMSE, LTD.

Bidder	Cash Payment	Price/ Acre	Rental	Oil	Gas	Other



0 2,000 Feet

BAY BLANC

SEC 34

SEC 35

T22S - R17E

SEC 36

T22S - R18E

BAY SAINT ELAINE

P.O.B.

LAKE PELTO

TERREBONNE

SL 19477

SL 21101

SL 188

Legend



15010012

Active_Leases

TRACT 44206 - Portion of Blocks 121, and 122, South Timbalier Area, Revised, Terrebonne Parish, Louisiana

All of the lands now or formerly constituting the beds and bottoms of all water bodies of every nature and description as to which title is vested in the State of Louisiana, together with all islands arising therein and other lands formed by accretion or by reliction, where allowed by law, excepting tax adjudicated lands, and not presently under mineral lease on January 14, 2015, situated in Terrebonne Parish, Louisiana, and more particularly described as follows: Beginning at a point having Coordinates of X = 2,242,301.31 and Y = 160,462.80; thence East 11,506.73 feet to a point on the West boundary of State Lease No. 1249, as amended having Coordinates of X = 2,253,808.04 and Y = 160,462.80; thence along the boundaries of said State Lease No. 1249 the following courses: South 6,424.38 feet to a point having Coordinates of X = 2,253,808.04 and Y = 154,038.42, East 20.42 feet to a point having Coordinates of X = 2,253,828.46 and Y = 154,038.42 and South 09 degrees 41 minutes 15 seconds East 810.35 feet to a point on the Louisiana Coastline, as decreed by the Supreme Court of the United States, as determined by a Special Master appointed therein, in litigation styled *United States v. State of Louisiana et al No. 9 Original*, in 1975, having Coordinates of X = 2,253,964.83 and Y = 153,239.62; thence along the boundaries of said Coastline the following: Northwesterly on a straight line to a point having Coordinates of X = 2,253,306 and Y = 154,102 and Southwesterly on a straight line to a point having Coordinates of X = 2,242,301.31 and Y = 151,416.19; thence North 9,046.61 feet to the point of beginning, containing approximately **2,024.56 acres**, all as more particularly outlined on a plat on file in the Office of Mineral Resources, Department of Natural Resources. All bearings, distances and coordinates are based on Louisiana Coordinate System of 1927, (North or South Zone), where applicable.

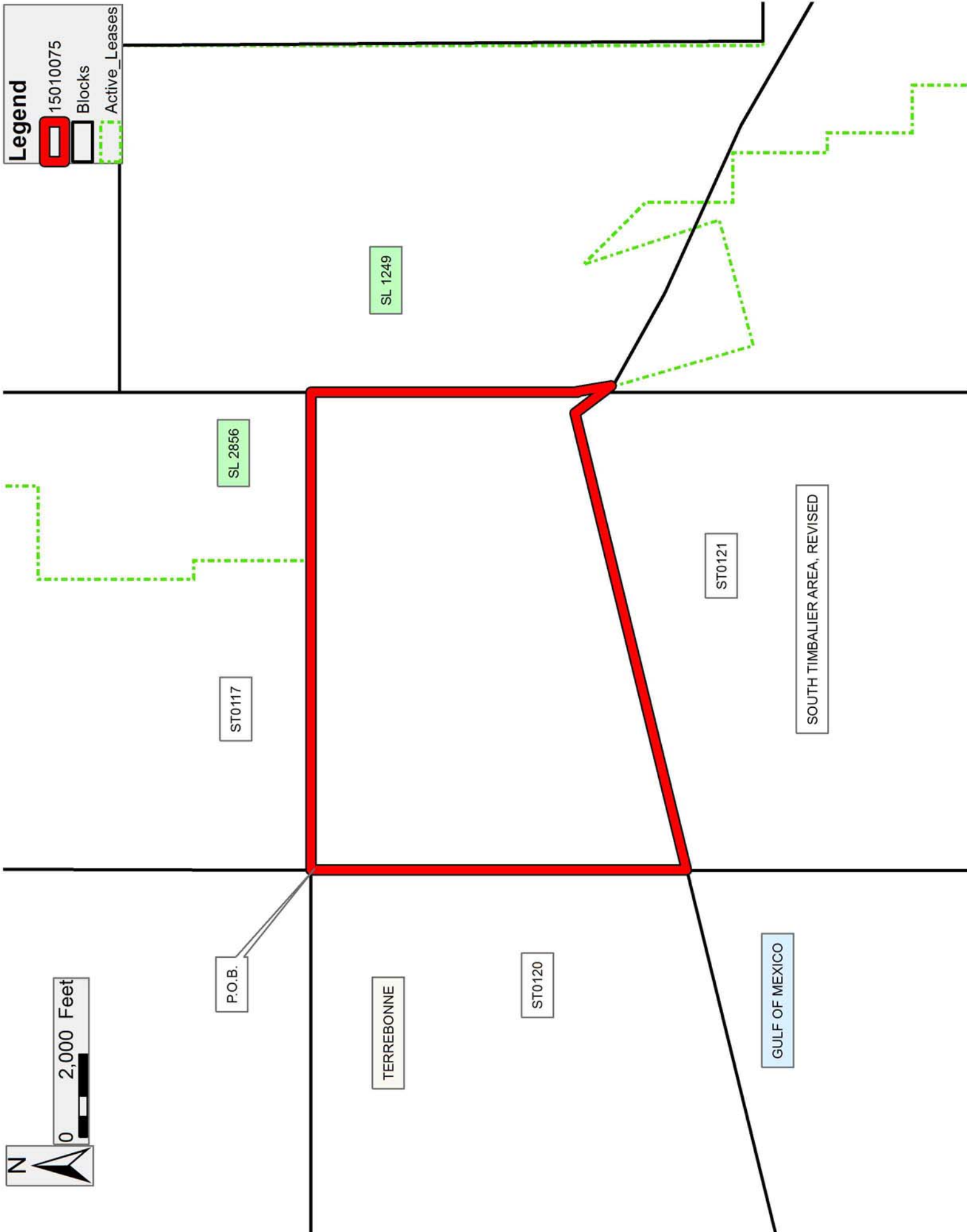
NOTE: The above description of the Tract nominated for lease has been provided and corrected, where required, exclusively by the nomination party. Any mineral lease selected from this Tract and awarded by the Louisiana State Mineral and Energy Board shall be without warranty of any kind, either express, implied, or statutory, including, but not limited to, the implied warranties of merchantability and fitness for a particular purpose. Should the mineral lease awarded by the Louisiana State Mineral and Energy Board be subsequently modified, cancelled or abrogated due to the existence of conflicting leases, operating agreements, private claims or other future obligations or conditions which may affect all or any portion of the leased Tract, it shall not relieve the Lessee of the obligation to pay any bonus due thereon to the Louisiana State Mineral and Energy Board, nor shall the Louisiana State Mineral and Energy Board be obligated to refund any consideration paid by the Lessor prior to such modification, cancellation, or abrogation, including, but not limited to, bonuses, rentals and royalties.

NOTE: The State of Louisiana does hereby reserve, and this lease shall be subject to, the imprescriptible right of surface use in the nature of a servitude in favor of the Department of Natural Resources, including its Offices and Commissions, for the sole purpose of implementing, constructing, servicing and maintaining approved coastal zone management and/or restoration projects. Utilization of any and all rights derived under this lease by the mineral lessee, its agents, successors or assigns, shall not interfere with nor hinder the reasonable surface use by the Department of Natural Resources, its Offices or Commissions, as herein above reserved.

NOTE: It appears, according to our records, that a portion of this Tract is located within the restrictive safety fairway area as set out by the Corps of Engineers, U.S. Army and/or the restrictive anchorage area as set out by the U.S. Coast Guard.

Applicant: CYPRESS ENERGY CORPORATION

Bidder	Cash Payment	Price/ Acre	Rental	Oil	Gas	Other



TRACT 44207 - Portion of Blocks 120, and 121, South Timbalier Area, Revised, Terrebonne Parish, Louisiana

All of the lands now or formerly constituting the beds and bottoms of all water bodies of every nature and description as to which title is vested in the State of Louisiana, together with all islands arising therein and other lands formed by accretion or by reliction, where allowed by law, excepting tax adjudicated lands, and not presently under mineral lease on January 14, 2015, situated in Terrebonne Parish, Louisiana, and more particularly described as follows: Beginning at a point having Coordinates of X = 2,230,771.72 and Y = 160,462.80; thence East 11,529.59 feet to a point having Coordinates of X = 2,242,301.31 and Y = 160,462.80; thence South 9,046.61 feet to a point of intersection with the Louisiana Coastline, as decreed by the Supreme Court of the United States, as determined by a Special Master appointed therein, in litigation styled *United States v. State of Louisiana et al No. 9 Original*, in 1975, having Coordinates of X = 2,242,301.31 and Y = 151,416.19; thence along the boundary of said Coastline Southwesterly on a straight line to a point having Coordinates of X = 2,230,771.72 and Y = 148,602.27; thence North 1,981.89 feet to the Southwest corner of State Lease No. 16943 having Coordinates of X = 2,230,771.72 and Y = 150,584.16; thence along the boundaries of said State Lease No. 16943 the following courses: East 2,568.34 feet to a point having Coordinates of X = 2,233,340.06 and Y = 150,584.16 and North 424.01 feet to its Northeast corner and the Southeast corner of State Lease No. 16942 having Coordinates of X = 2,233,340.06 and Y = 151,008.17; thence along the boundaries of said State Lease No. 16942 the following courses: North 5,936.12 feet to a point having Coordinates of X = 2,233,340.06 and Y = 156,944.29 and West 2,568.34 feet to its Northwest corner having Coordinates of X = 2,230,771.72 and Y = 156,944.29; thence North 3,518.51 feet to the point of beginning, containing approximately **2,391.88 acres**, all as more particularly outlined on a plat on file in the Office of Mineral Resources, Department of Natural Resources. All bearings, distances and coordinates are based on Louisiana Coordinate System of 1927, (North or South Zone), where applicable.

NOTE: The above description of the Tract nominated for lease has been provided and corrected, where required, exclusively by the nomination party. Any mineral lease selected from this Tract and awarded by the Louisiana State Mineral and Energy Board shall be without warranty of any kind, either express, implied, or statutory, including, but not limited to, the implied warranties of merchantability and fitness for a particular purpose. Should the mineral lease awarded by the Louisiana State Mineral and Energy Board be subsequently modified, cancelled or abrogated due to the existence of conflicting leases, operating agreements, private claims or other future obligations or conditions which may affect all or any portion of the leased Tract, it shall not relieve the Lessee of the obligation to pay any bonus due thereon to the Louisiana State Mineral and Energy Board, nor shall the Louisiana State Mineral and Energy Board be obligated to refund any consideration paid by the Lessor prior to such

modification, cancellation, or abrogation, including, but not limited to, bonuses, rentals and royalties.

NOTE: The State of Louisiana does hereby reserve, and this lease shall be subject to, the imprescriptible right of surface use in the nature of a servitude in favor of the Department of Natural Resources, including its Offices and Commissions, for the sole purpose of implementing, constructing, servicing and maintaining approved coastal zone management and/or restoration projects. Utilization of any and all rights derived under this lease by the mineral lessee, its agents, successors or assigns, shall not interfere with nor hinder the reasonable surface use by the Department of Natural Resources, its Offices or Commissions, as herein above reserved.

NOTE: It appears, according to our records, that a portion of this Tract is located within the restrictive safety fairway area as set out by the Corps of Engineers, U.S. Army and/or the restrictive anchorage area as set out by the U.S. Coast Guard.

Applicant: CYPRESS ENERGY CORPORATION

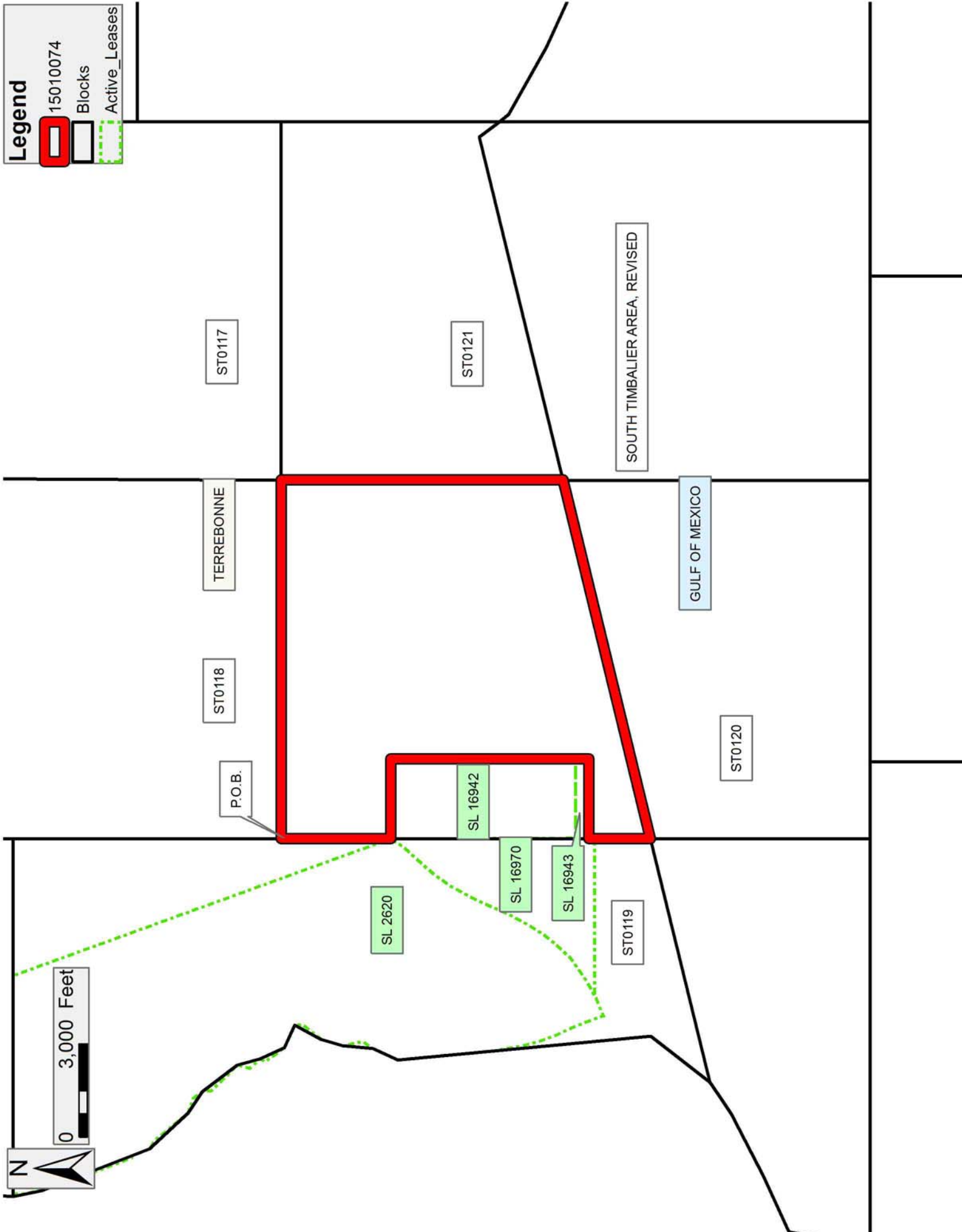
Bidder	Cash Payment	Price/ Acre	Rental	Oil	Gas	Other

Legend

15010074

Blocks

Active_Leases



TRACT 44208 - Terrebonne Parish, Louisiana

All of the lands now or formerly constituting the beds and bottoms of all water bodies of every nature and description as to which title is vested in the State of Louisiana, together with all islands arising therein and other lands formed by accretion or by reliction, where allowed by law, excepting tax adjudicated lands, and not presently under mineral lease on January 14, 2015, situated in Terrebonne Parish, Louisiana, and more particularly described as follows: Beginning at a point having Coordinates of X = 2,166,651.86 and Y = 161,394.09; thence South 01 degrees 57 minutes 17 seconds East 8,120.35 feet to a point having Coordinates of X = 2,166,928.85 and Y = 153,278.46; thence South 88 degrees 02 minutes 43 seconds West 13,345.22 feet to a point having Coordinates of X = 2,153,591.40 and Y = 152,823.25; thence North 723.22 feet to the Southeast corner of State Lease No. 16244, as amended having Coordinates of X = 2,153,591.40 and Y = 154,546.96; thence along the boundary of said State Lease No. 16244 the following courses: North 1,317.84 feet to a point having Coordinates of X = 2,153,591.40 and Y = 154,864.80 and North 49 degrees 15 minutes 28 seconds West 890.30 feet to its Northernmost corner and a point on the boundary of State Lease No. 3403, as amended having Coordinates of X = 2,152,916.85 and Y = 155,445.87; thence North 00 degrees 14 minutes 29 seconds West 1,020.40 feet along the boundary of said State Lease No. 3403 to its Northeast corner having Coordinates of X = 2,152,912.56 and Y = 156,466.26; thence along the boundary of said State Lease No. 16103 the following courses: East 699.09 feet to a point having Coordinates of X = 2,153,611.65 and Y = 156,466.26 and North 4,600.02 feet to a point having Coordinates of X = 2,153,611.65 and Y = 161,066.28; thence North 88 degrees 33 minutes 36 seconds East 13,044.33 feet to the point of beginning, **LESS AND EXCEPT** any right, title, and interest in lands owned by and not under lease from the State of Louisiana, on behalf of the Terrebonne Parish School Board, situated in Section 16, Township 16 South, Range 11 East, Terrebonne Parish, Louisiana, contained within the above described tract, containing approximately **2,222 acres**, all as more particularly outlined on a plat on file in the Office of Mineral Resources, Department of Natural Resources. All bearings, distances and coordinates are based on Louisiana Coordinate System of 1927, (North or South Zone), where applicable.

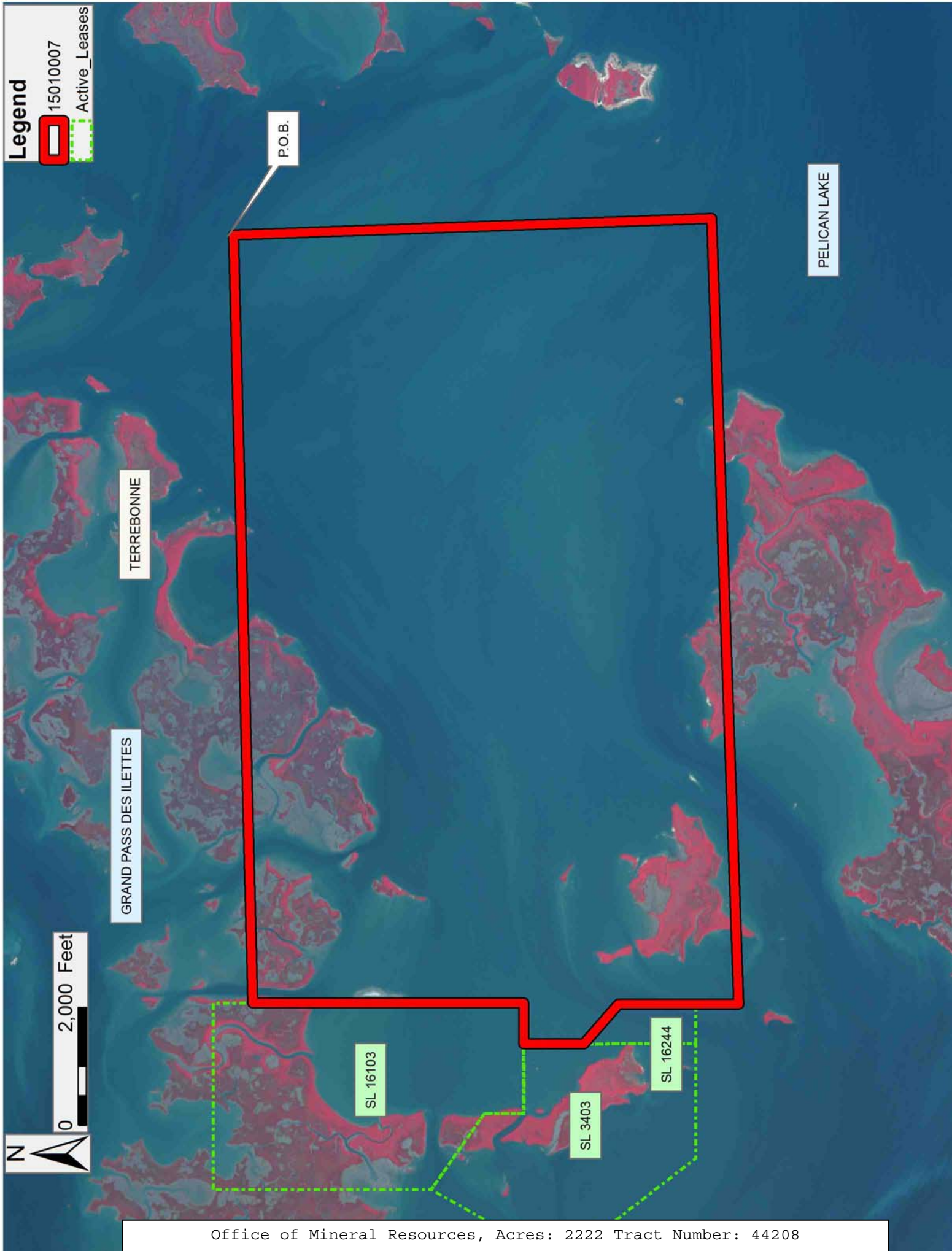
NOTE: The above description of the Tract nominated for lease has been provided and corrected, where required, exclusively by the nomination party. Any mineral lease selected from this Tract and awarded by the Louisiana State Mineral and Energy Board shall be without warranty of any kind, either express, implied, or statutory, including, but not limited to, the implied warranties of merchantability and fitness for a particular purpose. Should the mineral lease awarded by the Louisiana State Mineral and Energy Board be subsequently modified, cancelled or abrogated due to the existence of conflicting leases, operating agreements, private claims or other future obligations or conditions which may affect all or any portion of the leased Tract, it shall not relieve the Lessee of the obligation to pay any bonus due thereon to the Louisiana State Mineral and

Energy Board, nor shall the Louisiana State Mineral and Energy Board be obligated to refund any consideration paid by the Lessor prior to such modification, cancellation, or abrogation, including, but not limited to, bonuses, rentals and royalties.

NOTE: The State of Louisiana does hereby reserve, and this lease shall be subject to, the imprescriptible right of surface use in the nature of a servitude in favor of the Department of Natural Resources, including its Offices and Commissions, for the sole purpose of implementing, constructing, servicing and maintaining approved coastal zone management and/or restoration projects. Utilization of any and all rights derived under this lease by the mineral lessee, its agents, successors or assigns, shall not interfere with nor hinder the reasonable surface use by the Department of Natural Resources, its Offices or Commissions, as herein above reserved.

Applicant: ALLEN & KIRMSE, LTD.

Bidder	Cash Payment	Price/ Acre	Rental	Oil	Gas	Other



TRACT 44209 - Portion of Blocks 52, and 53, West Delta Area, Plaquemines Parish, Louisiana

All of the lands now or formerly constituting the beds and bottoms of all water bodies of every nature and description as to which title is vested in the State of Louisiana, together with all islands arising therein and other lands formed by accretion or by reliction, where allowed by law, excepting tax adjudicated lands, and not presently under mineral lease on January 14, 2015, situated in Plaquemines Parish, Louisiana, and more particularly described as follows: Beginning at a point having Coordinates of X = 2,630,737.00 and Y = 148,268.69, said point being the Southwest corner of Operating Agreement A0335; thence East 1,302.32 feet along the Southern boundary of said Operating Agreement A0335 to a point having Coordinates of X = 2,632,039.32 and Y = 148,268.69, said point being the Southeast corner of Operating Agreement A0335, said point also being on the West line of Operating Agreement A0334; thence along the Western and Southern boundaries of said Operating Agreement A0334 the following courses: South 977.39 feet to a point having Coordinates of X = 2,632,039.32 and Y = 147,291.30, said point being the Southwest corner of said Operating Agreement A0334; and East 1,177.62 feet to a point having Coordinates of X = 2,633,216.94 and Y = 147,291.30, said point being the Southeast corner of said Operating Agreement A0334, said point also being on the Western boundary of Operating Agreement A001; thence along the boundary of said Operating Agreement A001 the following courses: Southerly and Easterly to a point having a Coordinate of X = 2,634,429.51; thence South approximately 2,545 feet to a point having Coordinates of X = 2,634,429.51 and Y = 144,176.30; thence West 3,692.51 feet to a point having Coordinates of X = 2,630,737.00 and Y = 144,176.30; thence North 4,092.39 feet to the point of beginning, containing approximately **278 acres**, all as more particularly outlined on a plat on file in the Office of Mineral Resources, Department of Natural Resources. All bearings, distances and coordinates are based on Louisiana Coordinate System of 1927, (North or South Zone), where applicable.

NOTE: The above description of the Tract nominated for lease has been provided and corrected, where required, exclusively by the nomination party. Any mineral lease selected from this Tract and awarded by the Louisiana State Mineral and Energy Board shall be without warranty of any kind, either express, implied, or statutory, including, but not limited to, the implied warranties of merchantability and fitness for a particular purpose. Should the mineral lease awarded by the Louisiana State Mineral and Energy Board be subsequently modified, cancelled or abrogated due to the existence of conflicting leases, operating agreements, private claims or other future obligations or conditions which may affect all or any portion of the leased Tract, it shall not relieve the Lessee of the obligation to pay any bonus due thereon to the Louisiana State Mineral and Energy Board, nor shall the Louisiana State Mineral and Energy Board be obligated to refund any consideration paid by the Lessor prior to such modification, cancellation, or abrogation, including, but not limited to, bonuses, rentals and royalties.

NOTE: The State of Louisiana does hereby reserve, and this lease shall be subject to, the imprescriptible right of surface use in the nature of a servitude in favor of the Department of Natural Resources, including its Offices and Commissions, for the sole purpose of implementing, constructing, servicing and maintaining approved coastal zone management and/or restoration projects. Utilization of any and all rights derived under this lease by the mineral lessee, its agents, successors or assigns, shall not interfere with nor hinder the reasonable surface use by the Department of Natural Resources, its Offices or Commissions, as herein above reserved.

Applicant: ROBERT A. SCHROEDER, INC.

Bidder	Cash Payment	Price/ Acre	Rental	Oil	Gas	Other

