

TRACT 44195 - Portion of Blocks 53, 54, and 85, Main Pass Area, Revised, Plaquemines Parish, Louisiana

All of the lands now or formerly constituting the beds and bottoms of all water bodies of every nature and description as to which title is vested in the State of Louisiana, together with all islands arising therein and other lands formed by accretion or by reliction, where allowed by law, excepting tax adjudicated lands, and not presently under mineral lease on January 14, 2015, situated in Plaquemines Parish, Louisiana, and more particularly described as follows: Beginning at a point having Coordinates of X = 2,679,600.00 and Y = 263,330.00, said point being the northwest corner of Block 54, Main Pass Area, Revised; Thence East 1,719.18 feet on and along the North line of said Block 54, Main Pass Area, Revised, to point a having Coordinates of X = 2,681,319.18 and Y = 263,330.00, said point being on the Louisiana Coast Line, as decreed by the Supreme Court of the United States, as determined by a Special Master appointed therein, in litigation styled United States v. State of Louisiana et al No. 9 Original, in 1975; Thence on and along said Louisiana Coast Line the following courses and distances, to wit: South 06 degrees 06 minutes 01 seconds East 5,606.75 feet to a point having Coordinates of X = 2,681,915.00 and Y = 257,755.00; and South 48 degrees 45 minutes 46 seconds East 2,730.67 feet to a point having Coordinates of X = 2,683,968.43 and Y = 255,955.00; Thence Southwesterly 11,424 feet, more or less, to a point being the northeast corner of State of Louisiana State Lease No. 195, as amended; Thence Northerly 8,459 feet, more or less, to point a having Coordinates of X = 2,672,914.07 and Y = 261,530.32, said point being on the southern boundary of State of Louisiana State Lease No. 20034; Thence on and along the southern and eastern boundaries of said State of Louisiana State Lease No. 20034 the following courses and distances, to wit: North 74 degrees 56 minutes 32 seconds East 1,036.52 feet to point a having Coordinates of X = 2,673,915.00 and Y = 261,799.60, said point being the easternmost corner of said State of Louisiana State Lease No. 20034; and North 15 degrees 00 minutes 32 seconds West 1,584.45 feet to point a having Coordinates of X = 2,673,504.67 and Y = 263,330.00, said point being on the North line of said Block 53, Main Pass Area, Revised; Thence East 6,095.33 feet on and along said North line of said Block 53, Main Pass Area, Revised, to the Point of Beginning, containing approximately **1,863.02 acres**, all as more particularly outlined on a plat on file in the Office of Mineral Resources, Department of Natural Resources. All bearings, distances and coordinates are based on Louisiana Coordinate System of 1927, (North or South Zone), where applicable.

NOTE: The above description of the Tract nominated for lease has been provided and corrected, where required, exclusively by the nomination party. Any mineral lease selected from this Tract and awarded by the Louisiana State Mineral and Energy Board shall be without warranty of any kind, either express, implied, or statutory, including, but not limited to, the implied warranties of merchantability and fitness for a particular purpose. Should the mineral lease awarded by the Louisiana State Mineral and Energy Board be subsequently modified, cancelled or abrogated due to the existence of conflicting leases, operating agreements, private claims

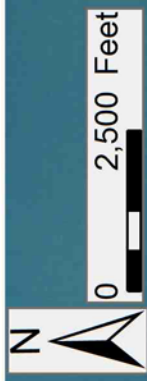
or other future obligations or conditions which may affect all or any portion of the leased Tract, it shall not relieve the Lessee of the obligation to pay any bonus due thereon to the Louisiana State Mineral and Energy Board, nor shall the Louisiana State Mineral and Energy Board be obligated to refund any consideration paid by the Lessor prior to such modification, cancellation, or abrogation, including, but not limited to, bonuses, rentals and royalties.

NOTE: The State of Louisiana does hereby reserve, and this lease shall be subject to, the imprescriptible right of surface use in the nature of a servitude in favor of the Department of Natural Resources, including its Offices and Commissions, for the sole purpose of implementing, constructing, servicing and maintaining approved coastal zone management and/or restoration projects. Utilization of any and all rights derived under this lease by the mineral lessee, its agents, successors or assigns, shall not interfere with nor hinder the reasonable surface use by the Department of Natural Resources, its Offices or Commissions, as herein above reserved.

NOTE: This tract is located in an area designated by the Louisiana Legislature or the Wildlife and Fisheries Commission as a Public Oyster Seed Ground, Reservation, or area of Calcasieu or Sabine Lake. Proposed projects occurring in these areas will be evaluated on a case by case basis by Louisiana Department of Wildlife & Fisheries. Modifications to proposed project features including, but not limited to, access routes, well sites, flowlines, and appurtenant structures maybe required by the Louisiana Department of Wildlife and Fisheries. In addition, compensatory mitigation will be required to offset unavoidable habitat impacts.

Applicant: ROBERT A. SCHROEDER, INC.

| Bidder | Cash Payment | Price/ Acre | Rental | Oil | Gas | Other |
|--------|-----------------|----------------|--------|-----|-----|-------|
| | | | | | | |
| | | | | | | |
| | | | | | | |
| | | | | | | |



PLAQUEMINES

MP0054

MAIN PASS AREA, REVISED

P.O.B.

MP0046

MP0085

SL 20034

GULF OF MEXICO

MP0053

SL 195

TRACT 44196 - Portion of Block 53, Main Pass Area, Revised, Plaquemines Parish, Louisiana

All of the lands now or formerly constituting the beds and bottoms of all water bodies of every nature and description as to which title is vested in the State of Louisiana, together with all islands arising therein and other lands formed by accretion or by reliction, where allowed by law, excepting tax adjudicated lands, and not presently under mineral lease on January 14, 2015, situated in Plaquemines Parish, Louisiana, and more particularly described as follows: Beginning at a point having Coordinates of X = 2,664,850.00 and Y = 263,330.00, said point being the northwest corner of Block 53, Main Pass Area, Revised; Thence East 3,993.28 feet on and along the North line of said Block 53, Main Pass Area, Revised, to a point having Coordinates of X = 2,668,843.28 and Y = 263,330.00, said point being on the western boundary of State of Louisiana State Lease No. 20034; Thence on and along the western and southern boundaries of said State of Louisiana State Lease No. 20034, the following courses and distances, to wit: South 15 degrees 03 minutes 28 seconds East 2,795.44 feet to a point having Coordinates of X = 2,669,569.52 and Y = 260,630.54, said point being the southernmost corner of said State of Louisiana State Lease No. 20034; and North 74 degrees 56 minutes 32 seconds East 3,463.47 feet to a point having Coordinates of X = 2,672,914.07 and Y = 261,530.32; Thence Southerly 8,459 feet, more or less, to the northeast corner of State of Louisiana State Lease No. 195, as amended; Thence Southwesterly 1,209 feet, more or less, on and along the northern boundary of said State of Louisiana State Lease No. 195, as amended, to a point being South 54 degrees 11 minutes 51 seconds East 2,709 feet, more or less, from the easternmost corner of State of Louisiana State Lease No. 11189, as amended; Thence North 54 degrees 11 minutes 51 seconds West 2,709 feet, more or less, to a point having Coordinates of X = 2,669,561.48 and Y = 254,301.65, said point being the easternmost corner of State of Louisiana State Lease No. 11189, as amended; Thence North 54 degrees 11 minutes 51 seconds West 5,809.20 feet on and along the northeastern boundary of said State of Louisiana State Lease No. 11189, as amended, to a point having Coordinates of X = 2,664,850.00 and Y = 257,700.00, said point being the northernmost corner of said State of Louisiana State Lease No. 11189, as amended, said point being on the West line of said Block 53, Main Pass area, Revised, said point also being the southernmost corner of State of Louisiana State Lease No. 16851; Thence North 37 degrees 37 minutes 23 seconds East 3,202.13 feet on and along the eastern boundary of said State of Louisiana State Lease No. 16851 to a point having Coordinates of X = 2,666,794.44 and Y = 260,244.16, said point being the northeast corner of said State of Louisiana State Lease No. 16851, said point also being a southeast corner of State of Louisiana State Lease No. 16667, as amended; Thence on and along the eastern and northern boundaries of said State of Louisiana State Lease No. 16667, as amended, the following courses and distances, to wit: North 38 degrees 10 minutes 43 seconds East 1,341.42 feet to a point having Coordinates of X = 2,667,623.59 and Y = 261,298.64, said point being the easternmost corner of said State of Louisiana State Lease No. 16667; North 57 degrees 56 minutes 23 seconds West 1,314.69 feet

to a point having Coordinates of X = 2,666,509.40 and Y = 261,996.49, said point being the northernmost corner of said State of Louisiana State Lease No. 16667; and South 67 degrees 39 minutes 40 seconds West 1,794.05 feet to a point having Coordinates of X = 2,664,850.00 and Y = 261,314.60, said point being the northwest corner of said State of Louisiana State Lease No. 16667, said point also being on the West line of said Block 53, Main Pass Area, Revised; Thence North 2,015.40 feet on and along said West line of said Block 53, Main Pass Area, Revised, to the Point of Beginning, containing approximately **1,233.26 acres**, all as more particularly outlined on a plat on file in the Office of Mineral Resources, Department of Natural Resources. All bearings, distances and coordinates are based on Louisiana Coordinate System of 1927, (North or South Zone), where applicable.

NOTE: The above description of the Tract nominated for lease has been provided and corrected, where required, exclusively by the nomination party. Any mineral lease selected from this Tract and awarded by the Louisiana State Mineral and Energy Board shall be without warranty of any kind, either express, implied, or statutory, including, but not limited to, the implied warranties of merchantability and fitness for a particular purpose. Should the mineral lease awarded by the Louisiana State Mineral and Energy Board be subsequently modified, cancelled or abrogated due to the existence of conflicting leases, operating agreements, private claims or other future obligations or conditions which may affect all or any portion of the leased Tract, it shall not relieve the Lessee of the obligation to pay any bonus due thereon to the Louisiana State Mineral and Energy Board, nor shall the Louisiana State Mineral and Energy Board be obligated to refund any consideration paid by the Lessor prior to such modification, cancellation, or abrogation, including, but not limited to, bonuses, rentals and royalties.

NOTE: The State of Louisiana does hereby reserve, and this lease shall be subject to, the imprescriptible right of surface use in the nature of a servitude in favor of the Department of Natural Resources, including its Offices and Commissions, for the sole purpose of implementing, constructing, servicing and maintaining approved coastal zone management and/or restoration projects. Utilization of any and all rights derived under this lease by the mineral lessee, its agents, successors or assigns, shall not interfere with nor hinder the reasonable surface use by the Department of Natural Resources, its Offices or Commissions, as herein above reserved.

NOTE: This tract is located in an area designated by the Louisiana Legislature or the Wildlife and Fisheries Commission as a Public Oyster Seed Ground, Reservation, or area of Calcasieu or Sabine Lake. Proposed projects occurring in these areas will be evaluated on a case by case basis by Louisiana Department of Wildlife & Fisheries. Modifications to proposed project features including, but not limited to, access routes, well sites, flowlines, and appurtenant structures maybe required by the

Louisiana Department of Wildlife and Fisheries. In addition, compensatory mitigation will be required to offset unavoidable habitat impacts.

Applicant: ROBERT A. SCHROEDER, INC.

| Bidder | Cash Payment | Price/ Acre | Rental | Oil | Gas | Other |
|--------|-----------------|----------------|--------|-----|-----|-------|
| | | | | | | |
| | | | | | | |
| | | | | | | |
| | | | | | | |

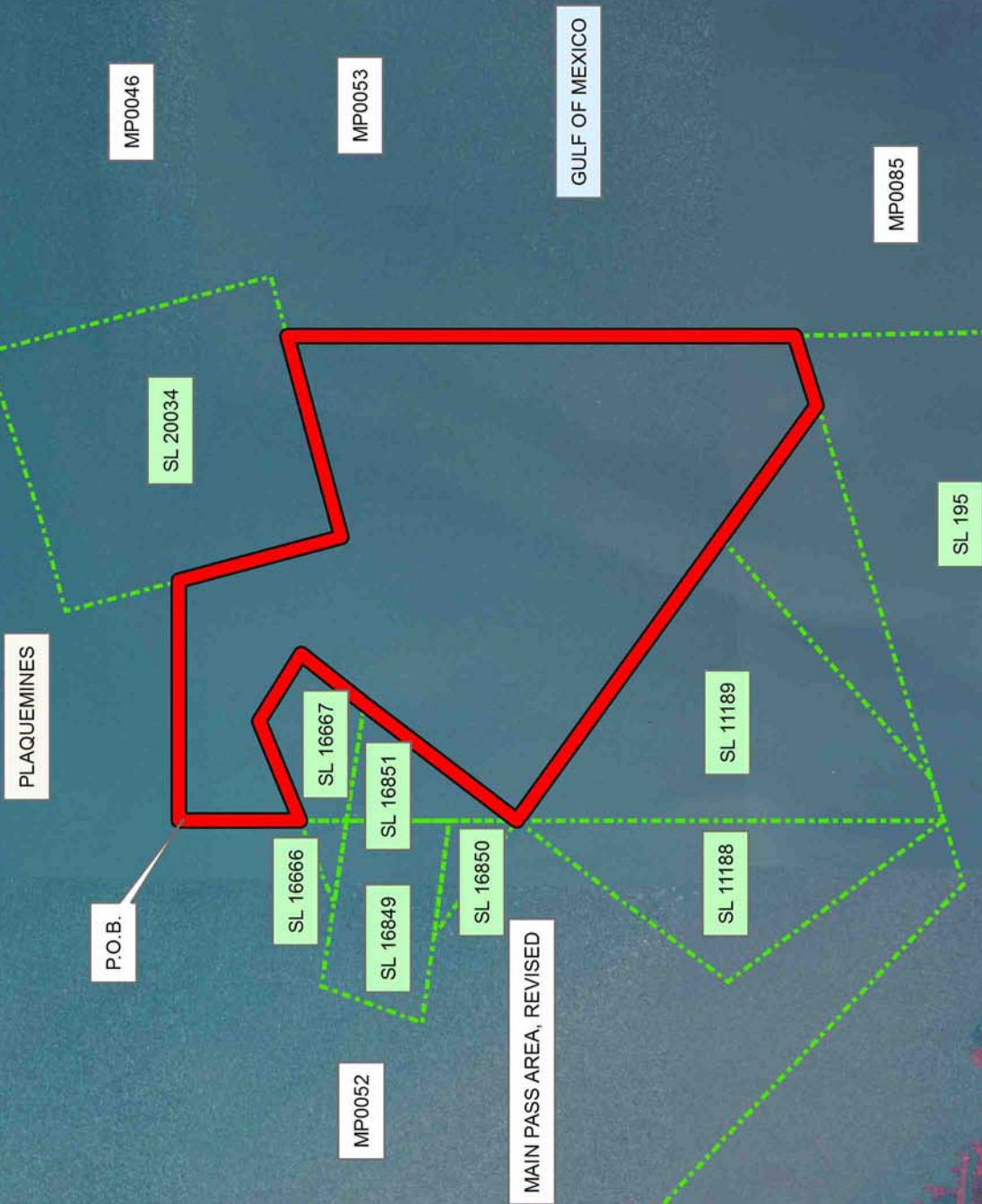
Legend

 15010059

 Active_Leases

 N

 0 2,000 Feet



TRACT 44197 - Portion of Blocks 54, 84, and 85, Main Pass Area, Revised, Plaquemines Parish, Louisiana

All of the lands now or formerly constituting the beds and bottoms of all water bodies of every nature and description as to which title is vested in the State of Louisiana, together with all islands arising therein and other lands formed by accretion or by reliction, where allowed by law, excepting tax adjudicated lands, and not presently under mineral lease on January 14, 2015, situated in Plaquemines Parish, Louisiana, and more particularly described as follows: Beginning at a point having Coordinates of X = 2,688,234.00 and Y = 252,215.00, said point being on the Louisiana Coast Line, as decreed by the Supreme Court of the United States, as determined by a Special Master appointed therein, in litigation styled United States v. State of Louisiana et al No. 9 Original, in 1975; Thence on and along said Louisiana Coast Line the following courses and distances, to wit: South 30 degrees 27 minutes 11 seconds East 2,112.01 feet to a point having Coordinates of X = 2,689,305.00 and Y = 250,395.00; and South 35 degrees 57 minutes 37 seconds East 2,242.33 feet to a point having Coordinates of X = 2,690,621.75 and Y = 248,580.00; Thence West approximately 17,624 feet, more or less, to point on the eastern boundary of State of Louisiana State Lease No. 195, as amended; Thence Northerly approximately, 4,492 feet, more or less, on and along said eastern boundary of said State of Louisiana State Lease No. 195, as amended, to a point being the northeast corner of said State of Louisiana State Lease No. 195, as amended; Thence Northeasterly approximately, 11,424 feet, more or less, to a point having Coordinates of X = 2,683,968.43 and Y = 255,955.00, said point being said Louisiana Coast Line; Thence South 48 degrees 45 minutes 53 seconds East 5,672.98 feet on and along said Louisiana Coast Line to the Point of Beginning, **LESS AND EXCEPT** any portion of State Lease No. 1610 that may lie within the above described tract, containing approximately **1,922.64 acres**, all as more particularly outlined on a plat on file in the Office of Mineral Resources, Department of Natural Resources. All bearings, distances and coordinates are based on Louisiana Coordinate System of 1927, (North or South Zone), where applicable.

NOTE: The above description of the Tract nominated for lease has been provided and corrected, where required, exclusively by the nomination party. Any mineral lease selected from this Tract and awarded by the Louisiana State Mineral and Energy Board shall be without warranty of any kind, either express, implied, or statutory, including, but not limited to, the implied warranties of merchantability and fitness for a particular purpose. Should the mineral lease awarded by the Louisiana State Mineral and Energy Board be subsequently modified, cancelled or abrogated due to the existence of conflicting leases, operating agreements, private claims or other future obligations or conditions which may affect all or any portion of the leased Tract, it shall not relieve the Lessee of the obligation to pay any bonus due thereon to the Louisiana State Mineral and Energy Board, nor shall the Louisiana State Mineral and Energy Board be obligated to refund any consideration paid by the Lessor prior to such

modification, cancellation, or abrogation, including, but not limited to, bonuses, rentals and royalties.

NOTE: The State of Louisiana does hereby reserve, and this lease shall be subject to, the imprescriptible right of surface use in the nature of a servitude in favor of the Department of Natural Resources, including its Offices and Commissions, for the sole purpose of implementing, constructing, servicing and maintaining approved coastal zone management and/or restoration projects. Utilization of any and all rights derived under this lease by the mineral lessee, its agents, successors or assigns, shall not interfere with nor hinder the reasonable surface use by the Department of Natural Resources, its Offices or Commissions, as herein above reserved.

NOTE: This tract is located in an area designated by the Louisiana Legislature or the Wildlife and Fisheries Commission as a Public Oyster Seed Ground, Reservation, or area of Calcasieu or Sabine Lake. Proposed projects occurring in these areas will be evaluated on a case by case basis by Louisiana Department of Wildlife & Fisheries. Modifications to proposed project features including, but not limited to, access routes, well sites, flowlines, and appurtenant structures maybe required by the Louisiana Department of Wildlife and Fisheries. In addition, compensatory mitigation will be required to offset unavoidable habitat impacts.

Applicant: ROBERT A. SCHROEDER, INC.

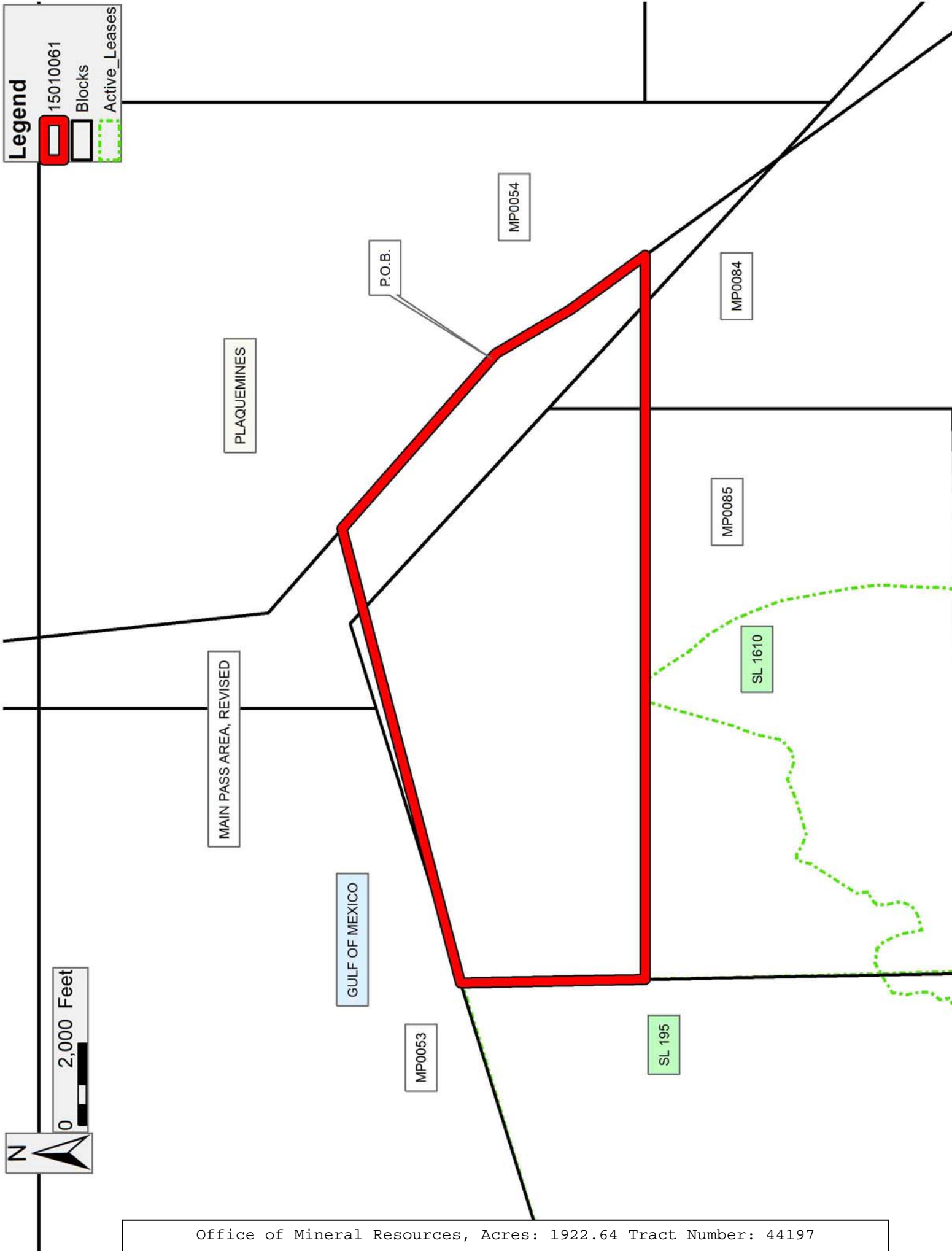
| Bidder | Cash Payment | Price/ Acre | Rental | Oil | Gas | Other |
|--------|-----------------|----------------|--------|-----|-----|-------|
| | | | | | | |
| | | | | | | |
| | | | | | | |
| | | | | | | |

Legend

15010061

Blocks

Active_Leases



0 2,000 Feet

N

TRACT 44198 - Plaquemines Parish, Louisiana

All of the lands now or formerly constituting the beds and bottoms of all water bodies of every nature and description as to which title is vested in the State of Louisiana, together with all islands arising therein and other lands formed by accretion or by reliction, where allowed by law, excepting tax adjudicated lands, and not presently under mineral lease on January 14, 2015, situated in Plaquemines Parish, Louisiana, and more particularly described as follows: Beginning at a point having Coordinates of X = 2,544,613.00 and Y = 244,729.00; thence East 9,872.00 feet to a point having Coordinates of X = 2,554,485.00 and Y = 244,729.00; thence South 17,325.00 feet to a point having Coordinates of X = 2,554,485.00 and Y = 227,404.00; thence West 9,872.00 feet to a point having Coordinates of X = 2,544,613.00 and Y = 227,404.00; thence North 17,325.00 feet to the point of beginning, containing approximately **2,480 acres**, all as more particularly outlined on a plat on file in the Office of Mineral Resources, Department of Natural Resources. All bearings, distances and coordinates are based on Louisiana Coordinate System of 1927, (North or South Zone), where applicable.

NOTE: The above description of the Tract nominated for lease has been provided and corrected, where required, exclusively by the nomination party. Any mineral lease selected from this Tract and awarded by the Louisiana State Mineral and Energy Board shall be without warranty of any kind, either express, implied, or statutory, including, but not limited to, the implied warranties of merchantability and fitness for a particular purpose. Should the mineral lease awarded by the Louisiana State Mineral and Energy Board be subsequently modified, cancelled or abrogated due to the existence of conflicting leases, operating agreements, private claims or other future obligations or conditions which may affect all or any portion of the leased Tract, it shall not relieve the Lessee of the obligation to pay any bonus due thereon to the Louisiana State Mineral and Energy Board, nor shall the Louisiana State Mineral and Energy Board be obligated to refund any consideration paid by the Lessor prior to such modification, cancellation, or abrogation, including, but not limited to, bonuses, rentals and royalties.

NOTE: The State of Louisiana does hereby reserve, and this lease shall be subject to, the imprescriptible right of surface use in the nature of a servitude in favor of the Department of Natural Resources, including its Offices and Commissions, for the sole purpose of implementing, constructing, servicing and maintaining approved coastal zone management and/or restoration projects. Utilization of any and all rights derived under this lease by the mineral lessee, its agents, successors or assigns, shall not interfere with nor hinder the reasonable surface use by the Department of Natural Resources, its Offices or Commissions, as herein above reserved.

Applicant: PETRO-LAND RESOURCES, INC.

| Bidder | Cash Payment | Price/ Acre | Rental | Oil | Gas | Other |
|--------|-----------------|----------------|--------|-----|-----|-------|
| | | | | | | |
| | | | | | | |
| | | | | | | |
| | | | | | | |

15010036

Freeze Statute

Claimable State Waterbottom

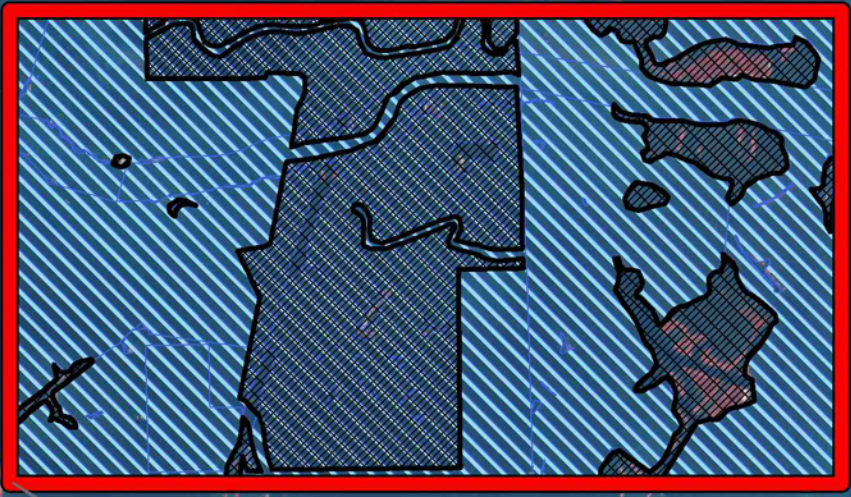
N

0 3,000 Feet

T20S - R28E

PLAQUEMINES

BAY POMME D'OR



P.O.B.

BASTIAN BAY

ENGLISH BAY

T20S - R29E

SHELL ISLAND BAY

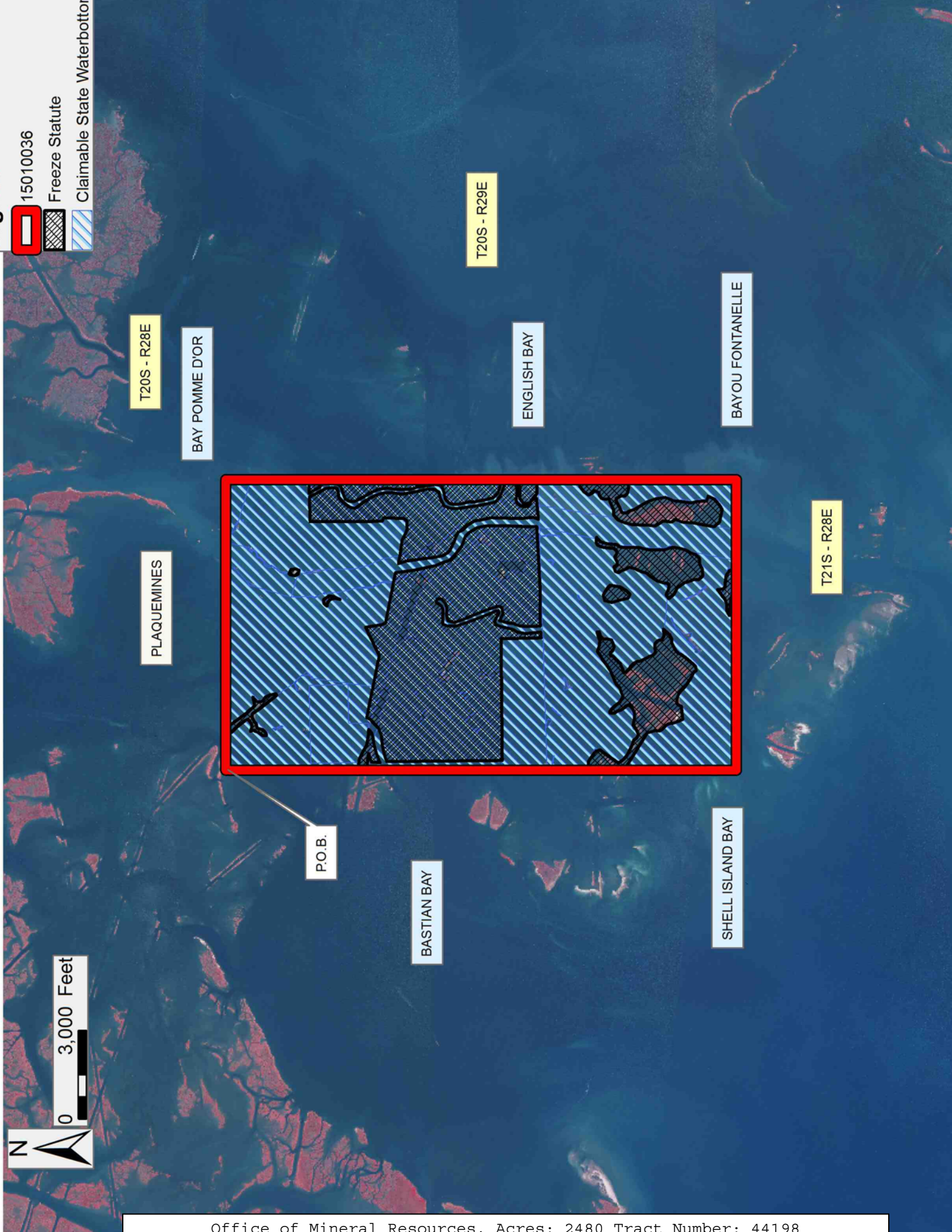
BAYOU FONTANELLE

T21S - R28E

15010036

Freeze Statute

Claimable State Waterbottom



TRACT 44199 - Plaquemines Parish, Louisiana

All of the lands now or formerly constituting the beds and bottoms of all water bodies of every nature and description as to which title is vested in the State of Louisiana, together with all islands arising therein and other lands formed by accretion or by reliction, where allowed by law, excepting tax adjudicated lands, and not presently under mineral lease on January 14, 2015, situated in Plaquemines Parish, Louisiana, and more particularly described as follows: Beginning at a point having Coordinates of X = 2,544,613.00 and Y = 244,729.00; thence South 17,325.00 feet to a point having Coordinates of X = 2,544,613.00 and Y = 227,404.00; thence West 4,936.00 feet to a point having Coordinates of X = 2,539,677.00 and Y = 227,404.00; thence North 17,325.00 feet to a point having Coordinates of X = 2,539,677.00 and Y = 244,729.00; thence East 4,936.00 feet to the point of beginning, **LESS AND EXCEPT** any right, title, and interest in lands owned by and not under lease from the State of Louisiana, on behalf of the Plaquemines Parish School Board, situated in Section 16, Township 21 South, Range 28 East, Plaquemines Parish, Louisiana, contained within the above described tract, containing approximately **1,718 acres**, all as more particularly outlined on a plat on file in the Office of Mineral Resources, Department of Natural Resources. All bearings, distances and coordinates are based on Louisiana Coordinate System of 1927, (North or South Zone), where applicable.

NOTE: The above description of the Tract nominated for lease has been provided and corrected, where required, exclusively by the nomination party. Any mineral lease selected from this Tract and awarded by the Louisiana State Mineral and Energy Board shall be without warranty of any kind, either express, implied, or statutory, including, but not limited to, the implied warranties of merchantability and fitness for a particular purpose. Should the mineral lease awarded by the Louisiana State Mineral and Energy Board be subsequently modified, cancelled or abrogated due to the existence of conflicting leases, operating agreements, private claims or other future obligations or conditions which may affect all or any portion of the leased Tract, it shall not relieve the Lessee of the obligation to pay any bonus due thereon to the Louisiana State Mineral and Energy Board, nor shall the Louisiana State Mineral and Energy Board be obligated to refund any consideration paid by the Lessor prior to such modification, cancellation, or abrogation, including, but not limited to, bonuses, rentals and royalties.

NOTE: The State of Louisiana does hereby reserve, and this lease shall be subject to, the imprescriptible right of surface use in the nature of a servitude in favor of the Department of Natural Resources, including its Offices and Commissions, for the sole purpose of implementing, constructing, servicing and maintaining approved coastal zone management and/or restoration projects. Utilization of any and all rights derived under this lease by the mineral lessee, its agents, successors or assigns, shall not interfere with nor hinder the reasonable surface use by the

Department of Natural Resources, its Offices or Commissions, as herein above reserved.

Applicant: PETRO-LAND RESOURCES, INC.

| Bidder | Cash Payment | Price/ Acre | Rental | Oil | Gas | Other |
|--------|-----------------|----------------|--------|-----|-----|-------|
| | | | | | | |
| | | | | | | |
| | | | | | | |
| | | | | | | |



TRACT 44200 - Terrebonne Parish, Louisiana

All of the lands now or formerly constituting the beds and bottoms of all water bodies of every nature and description as to which title is vested in the State of Louisiana, together with all islands arising therein and other lands formed by accretion or by reliction, where allowed by law, excepting tax adjudicated lands, and not presently under mineral lease on January 14, 2015, situated in Terrebonne Parish, Louisiana, and more particularly described as follows: Beginning at a point having Coordinates of X = 2,190,802.00 and Y = 212,451.00; thence East 18,480.00 feet to a point having Coordinates of X = 2,209,282.00 and Y = 212,451.00; thence Southerly approximately 14,796 feet to a Northwest corner of State Lease No. 199, as amended; thence along the boundary of said State Lease No. 199 the following courses: Southerly approximately 1,500 feet, Westerly approximately 4,050 feet, Southerly approximately 700 feet, Westerly approximately 701.90 feet and Southerly approximately 593 feet to the Northeast corner of State Lease No. 15785, as amended; thence along the boundary of said State Lease No. 15785 the following courses: South 74 degrees 23 minutes 20 seconds West 194.42 feet, South 68 degrees 10 minutes 28 seconds West 1,373.91 feet, South 71 degrees 59 minutes 41 seconds West 405.14 feet and South 72 degrees 58 minutes 11 seconds West approximately 709 feet to the point of intersection with a North South line having a Coordinate of X = 2,202,024.00; thence North approximately 32 feet to a point having Coordinates of X = 2,202,024.00 and Y = 193,971.00; thence West 11,222.00 feet to a point having Coordinates of X = 2,190,802.00 and Y = 193,971.00; thence North 611.35 feet to a point on the boundary of State Lease No. 21086 having Coordinates of X = 2,190,802.00 and Y = 194,582.35; thence along the boundary of said State Lease No. 21086 the following courses: East 7,410.61 feet to a point having Coordinates of X = 2,198,212.61 and Y = 194,582.35, North 4,550.00 feet to a point having Coordinates of X = 2,198,212.61 and Y = 199,132.35 and West 7,410.61 feet to a point having Coordinates of X = 2,190,802.00 and Y = 199,132.35; thence North 13,318.65 feet to the point of beginning, **LESS AND EXCEPT**, any portion of said State Lease No. 199 and said State Lease No. 15785 that may lie within the above described tract and **LESS AND EXCEPT** any right, title, and interest in lands owned by and not under lease from the State of Louisiana, on behalf of the Terrebonne Parish School Board, situated in Section 16, Township 21 South, Range 117 East, Terrebonne Parish, Louisiana, contained within the above described tract, containing approximately **899 acres**, all as more particularly outlined on a plat on file in the Office of Mineral Resources, Department of Natural Resources. All bearings, distances and coordinates are based on Louisiana Coordinate System of 1927, (North or South Zone), where applicable.

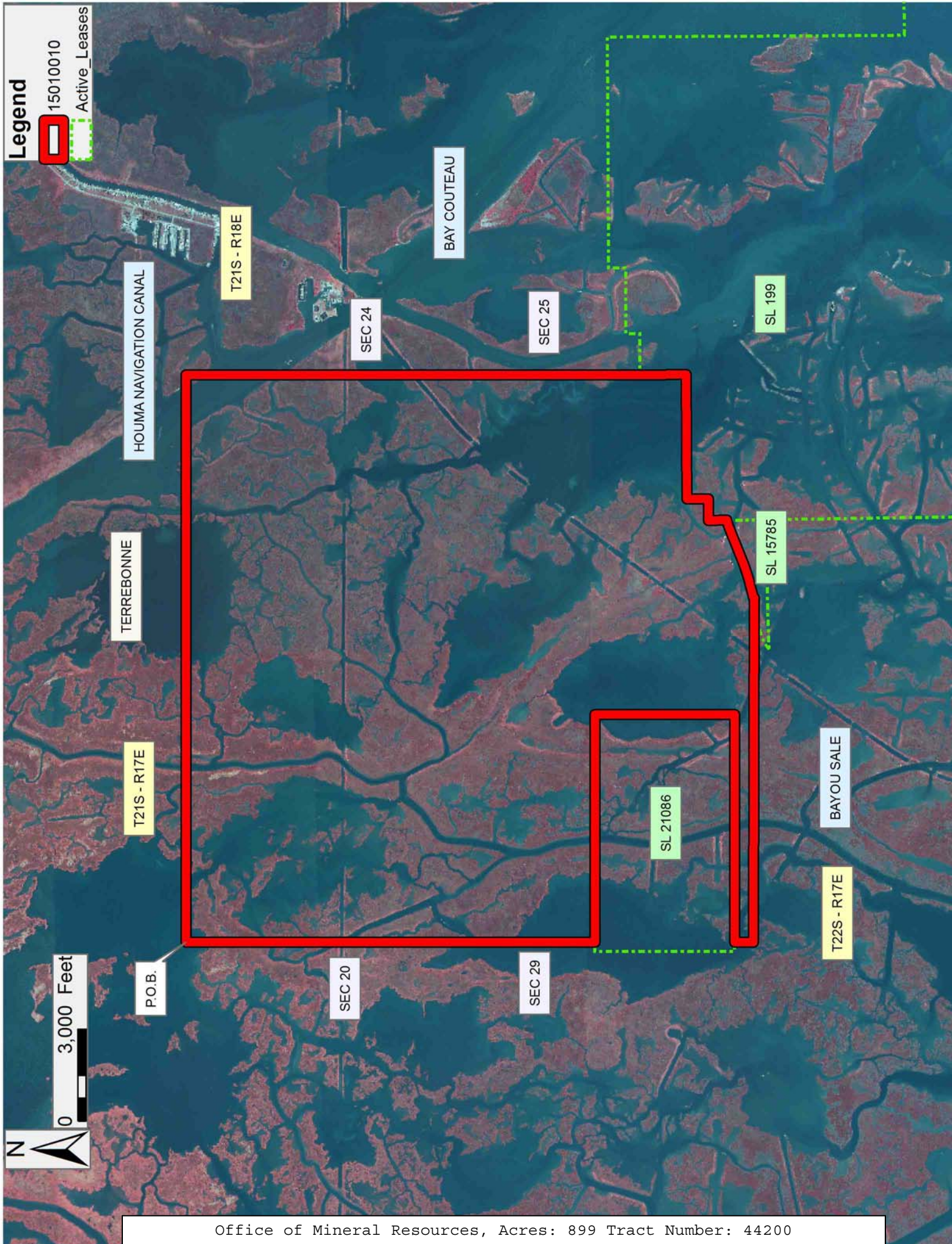
NOTE: The above description of the Tract nominated for lease has been provided and corrected, where required, exclusively by the nomination party. Any mineral lease selected from this Tract and awarded by the Louisiana State Mineral and Energy Board shall be without warranty of any kind, either express, implied, or statutory, including, but not limited to, the implied warranties of merchantability and fitness for a particular

purpose. Should the mineral lease awarded by the Louisiana State Mineral and Energy Board be subsequently modified, cancelled or abrogated due to the existence of conflicting leases, operating agreements, private claims or other future obligations or conditions which may affect all or any portion of the leased Tract, it shall not relieve the Lessee of the obligation to pay any bonus due thereon to the Louisiana State Mineral and Energy Board, nor shall the Louisiana State Mineral and Energy Board be obligated to refund any consideration paid by the Lessor prior to such modification, cancellation, or abrogation, including, but not limited to, bonuses, rentals and royalties.

NOTE: The State of Louisiana does hereby reserve, and this lease shall be subject to, the imprescriptible right of surface use in the nature of a servitude in favor of the Department of Natural Resources, including its Offices and Commissions, for the sole purpose of implementing, constructing, servicing and maintaining approved coastal zone management and/or restoration projects. Utilization of any and all rights derived under this lease by the mineral lessee, its agents, successors or assigns, shall not interfere with nor hinder the reasonable surface use by the Department of Natural Resources, its Offices or Commissions, as herein above reserved.

Applicant: ALLEN & KIRMSE, LTD.

| Bidder | Cash Payment | Price/ Acre | Rental | Oil | Gas | Other |
|--------|-----------------|----------------|--------|-----|-----|-------|
| | | | | | | |
| | | | | | | |
| | | | | | | |
| | | | | | | |



TRACT 44201 - Terrebonne Parish, Louisiana

All of the lands now or formerly constituting the beds and bottoms of all water bodies of every nature and description as to which title is vested in the State of Louisiana, together with all islands arising therein and other lands formed by accretion or by reliction, where allowed by law, excepting tax adjudicated lands, and not presently under mineral lease on January 14, 2015, situated in Terrebonne Parish, Louisiana, and more particularly described as follows: Beginning at a point having Coordinates of X = 2,193,375.00 and Y = 193,971.00; thence South 18,009.00 feet to a point having Coordinates of X = 2,193,375.00 and Y = 175,962.00; thence West 6,528.54 feet to a point having Coordinates of X = 2,186,846.46 and Y = 175,962.00; thence North 157.27 feet to a point being the Southwest corner of State Lease No. 21091 having Coordinates of X = 2,186,846.46 and Y = 176,119.27; thence along the boundary of said State Lease No. 21091 the following courses: East 3,800.00 feet to a point having Coordinates of X = 2,190,646.46 and Y = 176,119.27, North 4,000.00 feet to a point having Coordinates of X = 2,190,646.46 and Y = 180,119.27, and West 1,623.21 feet to a point having Coordinates of X = 2,189,023.25 and Y = 180,119.27; thence North 13,851.73 feet to a point having Coordinates of X = 2,189,023.25 and Y = 193,971.00; thence East 4,351.75 feet to the point of beginning, **LESS AND EXCEPT** any right, title, and interest in lands owned by and not under lease from the State of Louisiana, on behalf of the Terrebonne Parish School Board, situated in Section 16, Township 22 South, Range 17 East, Terrebonne Parish, Louisiana, contained within the above described tract, containing approximately **824 acres**, all as more particularly outlined on a plat on file in the Office of Mineral Resources, Department of Natural Resources. All bearings, distances and coordinates are based on Louisiana Coordinate System of 1927, (North or South Zone), where applicable.

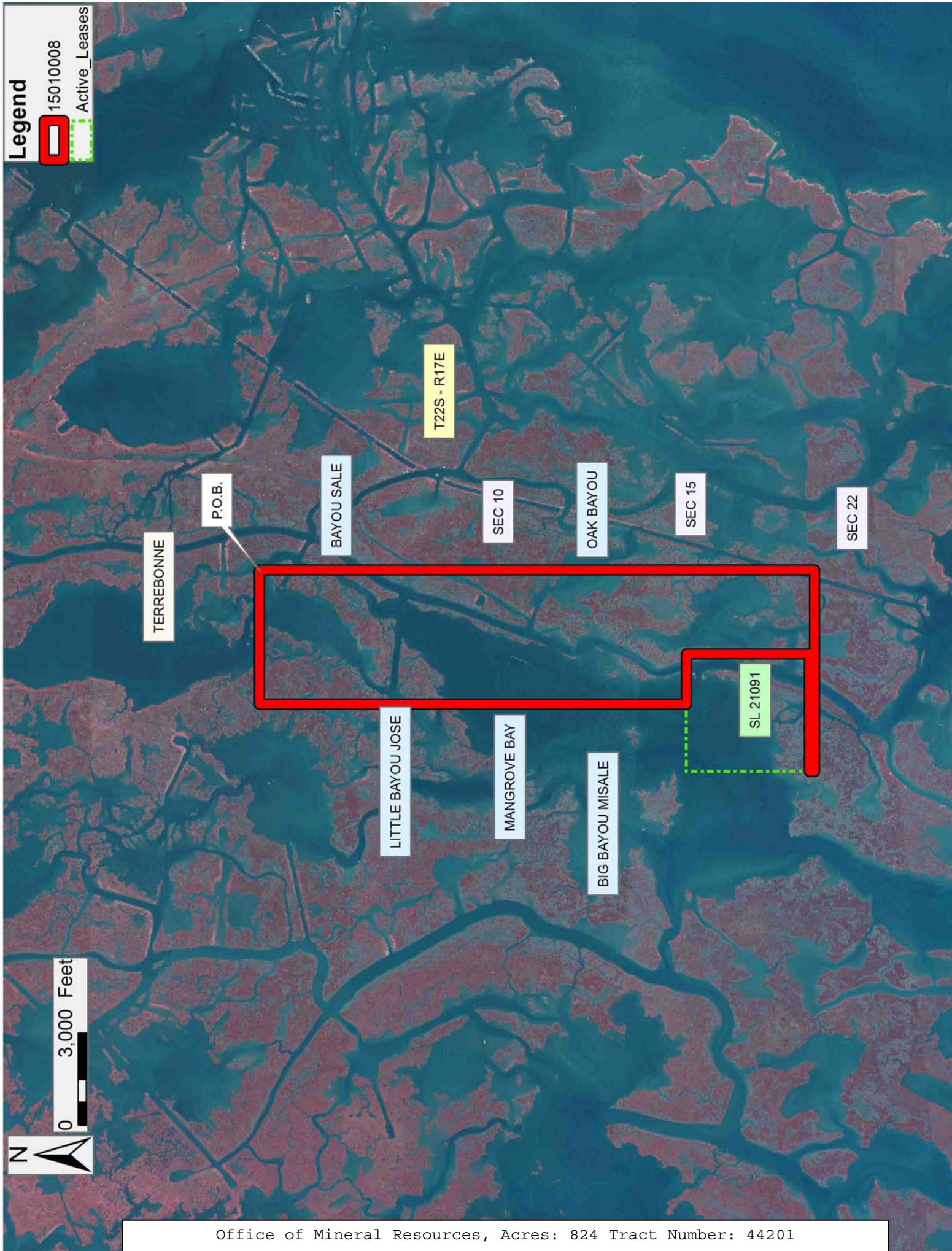
NOTE: The above description of the Tract nominated for lease has been provided and corrected, where required, exclusively by the nomination party. Any mineral lease selected from this Tract and awarded by the Louisiana State Mineral and Energy Board shall be without warranty of any kind, either express, implied, or statutory, including, but not limited to, the implied warranties of merchantability and fitness for a particular purpose. Should the mineral lease awarded by the Louisiana State Mineral and Energy Board be subsequently modified, cancelled or abrogated due to the existence of conflicting leases, operating agreements, private claims or other future obligations or conditions which may affect all or any portion of the leased Tract, it shall not relieve the Lessee of the obligation to pay any bonus due thereon to the Louisiana State Mineral and Energy Board, nor shall the Louisiana State Mineral and Energy Board be obligated to refund any consideration paid by the Lessor prior to such modification, cancellation, or abrogation, including, but not limited to, bonuses, rentals and royalties.

NOTE: The State of Louisiana does hereby reserve, and this lease shall be subject to, the imprescriptible right of surface use in the nature of a

servitude in favor of the Department of Natural Resources, including its Offices and Commissions, for the sole purpose of implementing, constructing, servicing and maintaining approved coastal zone management and/or restoration projects. Utilization of any and all rights derived under this lease by the mineral lessee, its agents, successors or assigns, shall not interfere with nor hinder the reasonable surface use by the Department of Natural Resources, its Offices or Commissions, as herein above reserved.

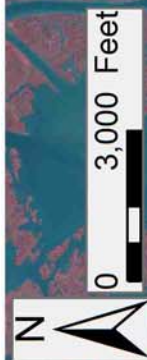
Applicant: ALLEN & KIRMSE, LTD.

| Bidder | Cash Payment | Price/ Acre | Rental | Oil | Gas | Other |
|--------|-----------------|----------------|--------|-----|-----|-------|
| | | | | | | |
| | | | | | | |
| | | | | | | |
| | | | | | | |



Legend

- 15010008
- Active_Leases



TERREBONNE

P.O.B.

BAYOU SALE

T22S - R17E

SEC 10

OAK BAYOU

SEC 15

SEC 22

LITTLE BAYOU JOSE

MANGROVE BAY

BIG BAYOU MISALE

SL 21091

TRACT 44202 - Terrebonne Parish, Louisiana

All of the lands now or formerly constituting the beds and bottoms of all water bodies of every nature and description as to which title is vested in the State of Louisiana, together with all islands arising therein and other lands formed by accretion or by reliction, where allowed by law, excepting tax adjudicated lands, and not presently under mineral lease on January 14, 2015, situated in Terrebonne Parish, Louisiana, and more particularly described as follows: Beginning at a point having Coordinates of X = 2,193,375.00 and Y = 193,971.00; thence East 8,649.00 feet to a point having Coordinates of X = 2,202,024.00 and Y = 193,971.00; thence South approximately 32 feet to a point on the boundary of State Lease No. 15785, as amended having a Coordinate of X = 2,202,024.00; thence along the boundary of said State Lease No. 15785 the following courses and distances: South 72 degrees 58 minutes 11 seconds West 497.23 feet, North 39 degrees 06 minutes 59 seconds West 92.50 feet, South 79 degrees 22 minutes 08 seconds West 564.44 feet, South 74 degrees 46 minutes 10 seconds West 214.23 feet, South 64 degrees 39 minutes 17 seconds West 233.40 feet and South 55 degrees 52 minutes 56 seconds West 257.46 feet to its Southwest corner and the Northwest corner of State Lease No. 16790, as amended; thence along the boundary of said State Lease No. 16790 the following courses and distances: South 55 degrees 52 minutes 54 seconds West approximately 16 feet to a point having Coordinates of X = 2,200,291.43 and Y = 193,451.06, South 43 degrees 06 minutes 45 seconds West 183.12 feet to a point having Coordinates of X = 2,200,166.28 and Y = 193,317.38, South 33 degrees 05 minutes 22 seconds West 1,040.26 feet to a point having Coordinates of X = 2,199,598.35 and Y = 192,445.83, South 27 degrees 28 minutes 38 seconds West 558.67 feet to a point having Coordinates of X = 2,199,340.59 and Y = 191,950.18, South 21 degrees 31 minutes 34 seconds West 172.46 feet to a point having Coordinates of X = 2,199,277.31 and Y = 191,789.75, South 14 degrees 09 minutes 53 seconds West 284.46 feet to a point having Coordinates of X = 2,199,207.69 and Y = 191,513.94, South 05 degrees 14 minutes 13 seconds West 273.45 feet to a point having Coordinates of X = 2,199,182.74 and Y = 191,241.63, South 00 degrees 29 minutes 36 seconds East 162.55 feet to a point having Coordinates of X = 2,199,184.14 and Y = 191,079.08, South 06 degrees 13 minutes 17 seconds East 350.36 feet to a point having Coordinates of X = 2,199,222.10 and Y = 190,730.79, South 09 degrees 28 minutes 14 seconds East 891.00 feet to a point having Coordinates of X = 2,199,368.71 and Y = 189,851.93, South 40 degrees 33 minutes 29 seconds East 1,842.76 feet to a point having Coordinates of X = 2,200,566.90 and Y = 188,451.90, South 44 degrees 58 minutes 36 seconds East 68.83 feet to a point having Coordinates of X = 2,200,615.55 and Y = 188,403.21, South 62 degrees 29 minutes 16 seconds East 74.17 feet to a point having Coordinates of X = 2,200,681.33 and Y = 188,368.94, South 83 degrees 56 minutes 51 seconds East 538.69 feet to a point having Coordinates of X = 2,201,217.02 and Y = 188,312.14, North 81 degrees 29 minutes 04 seconds East 209.89 feet to a point having Coordinates of X = 2,201,424.60 and Y = 188,343.22, North 66 degrees 34 minutes 57 seconds East 141.39 feet to a point having Coordinates of X = 2,201,554.34 and Y = 188,399.42, North 46 degrees 21

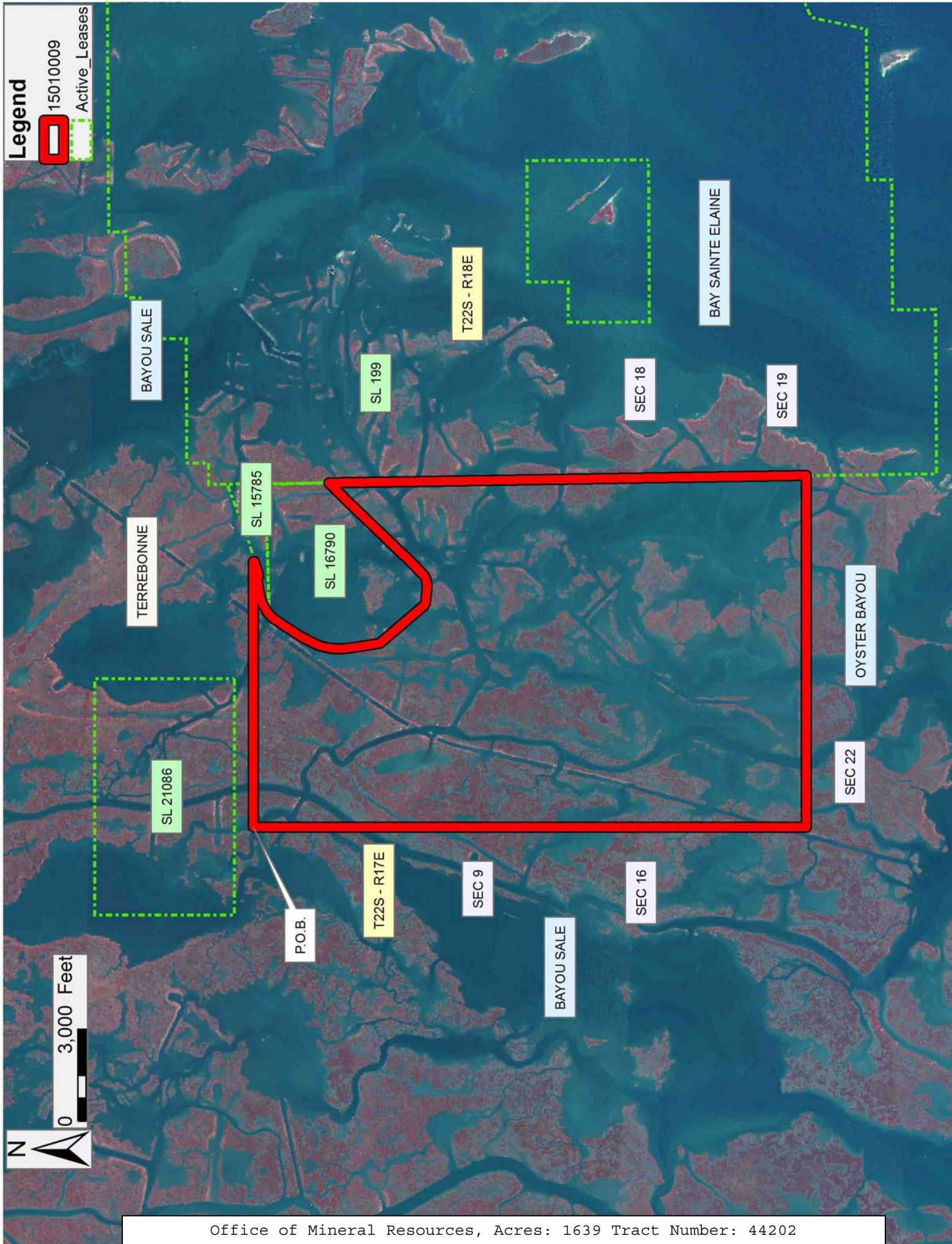
minutes 19 seconds East 724.56 feet to a point having Coordinates of X = 2,202,078.65 and Y = 188,899.50, North 41 degrees 59 minutes 18 seconds East 385.65 feet to a point having Coordinates of X = 2,202,336.65 and Y = 189,186.14, North 43 degrees 52 minutes 01 seconds East 2,699.32 feet to a point having Coordinates of X = 2,204,207.24 and Y = 191,132.22, North 46 degrees 59 minutes 56 seconds East 440.68 feet to a point having Coordinates of X = 2,204,529.52 and Y = 191,432.77 and North 38 degrees 14 minutes 44 seconds East approximately 99 feet to a point on the boundary of State Lease No. 199, as amended; thence Southerly approximately 15,551 feet along the boundary of said State Lease No. 199 to the point of intersection with an East West line having a Coordinate of Y = 175,962.00; thence West approximately 11,451 feet to a point having Coordinates of X = 2,193,375.00 and Y = 175,962.00; thence North 18,009.00 feet to the point of beginning, **LESS AND EXCEPT**, any portion of said State Lease No. 199, said State Lease No. 15785 and said State Lease No. 16790 that may lie within the above described tract, containing approximately **1,639 acres**, all as more particularly outlined on a plat on file in the Office of Mineral Resources, Department of Natural Resources. All bearings, distances and coordinates are based on Louisiana Coordinate System of 1927, (North or South Zone), where applicable.

NOTE: The above description of the Tract nominated for lease has been provided and corrected, where required, exclusively by the nomination party. Any mineral lease selected from this Tract and awarded by the Louisiana State Mineral and Energy Board shall be without warranty of any kind, either express, implied, or statutory, including, but not limited to, the implied warranties of merchantability and fitness for a particular purpose. Should the mineral lease awarded by the Louisiana State Mineral and Energy Board be subsequently modified, cancelled or abrogated due to the existence of conflicting leases, operating agreements, private claims or other future obligations or conditions which may affect all or any portion of the leased Tract, it shall not relieve the Lessee of the obligation to pay any bonus due thereon to the Louisiana State Mineral and Energy Board, nor shall the Louisiana State Mineral and Energy Board be obligated to refund any consideration paid by the Lessor prior to such modification, cancellation, or abrogation, including, but not limited to, bonuses, rentals and royalties.

NOTE: The State of Louisiana does hereby reserve, and this lease shall be subject to, the imprescriptible right of surface use in the nature of a servitude in favor of the Department of Natural Resources, including its Offices and Commissions, for the sole purpose of implementing, constructing, servicing and maintaining approved coastal zone management and/or restoration projects. Utilization of any and all rights derived under this lease by the mineral lessee, its agents, successors or assigns, shall not interfere with nor hinder the reasonable surface use by the Department of Natural Resources, its Offices or Commissions, as herein above reserved.

Applicant: ALLEN & KIRMSE, LTD.

| Bidder | Cash Payment | Price/ Acre | Rental | Oil | Gas | Other |
|--------|-----------------|----------------|--------|-----|-----|-------|
| | | | | | | |
| | | | | | | |
| | | | | | | |
| | | | | | | |



TRACT 44203 - Terrebonne Parish, Louisiana

All of the lands now or formerly constituting the beds and bottoms of all water bodies of every nature and description as to which title is vested in the State of Louisiana, together with all islands arising therein and other lands formed by accretion or by reliction, where allowed by law, excepting tax adjudicated lands, and not presently under mineral lease on January 14, 2015, situated in Terrebonne Parish, Louisiana, and more particularly described as follows: Beginning at a point having Coordinates of X = 2,193,375.00 and Y = 175,962.00; thence East approximately 11,451 feet to a point on the boundary of State Lease No. 199, as amended having a Coordinate of Y = 175,962.00; thence Southerly approximately 4,245 feet along the boundary of said State Lease No. 199 to its Southwest corner; thence Southerly approximately 8,435 feet to a point having Coordinates of X = 2,204,888.00 and Y = 163,282.00; thence West 11,513.00 feet to a point having Coordinates of X = 2,193,375.00 and Y = 163,282.00; thence North 12,680.00 feet to the point of beginning, **LESS AND EXCEPT**, any portion of said State Lease No. 199 that may lie within the above described tract, **ALSO LESS AND EXCEPT** all that portion of State Lease No. 21255 that lies within the boundary of the above described tract, and more particularly described as follows: Commencing at the point of beginning of the above described tract having Coordinates of X = 2,193,375.00 and Y = 175,962.00; thence South 86 degrees 11 minutes 28 seconds East 9,402.77 feet to the Northwest corner of said State Lease No. 21255 having Coordinates of X = 2,202,757.00 and Y = 175,337.37; thence along the boundary of said State Lease No. 21255 the following course: East 2,058.97 feet to a point having Coordinates of X = 2,204,815.97 and Y = 175,337.37, South 1,926.98 feet to a point having Coordinates of X = 2,204,815.97 and Y = 173,410.39, West 2,058.97 feet to a point having Coordinates of X = 2,202,757.00 and Y = 173,410.39 and North 1,926.98 feet to its Northwest corner, the above described tract containing approximately **2,468 acres**, all as more particularly outlined on a plat on file in the Office of Mineral Resources, Department of Natural Resources. All bearings, distances and coordinates are based on Louisiana Coordinate System of 1927, (North or South Zone), where applicable.

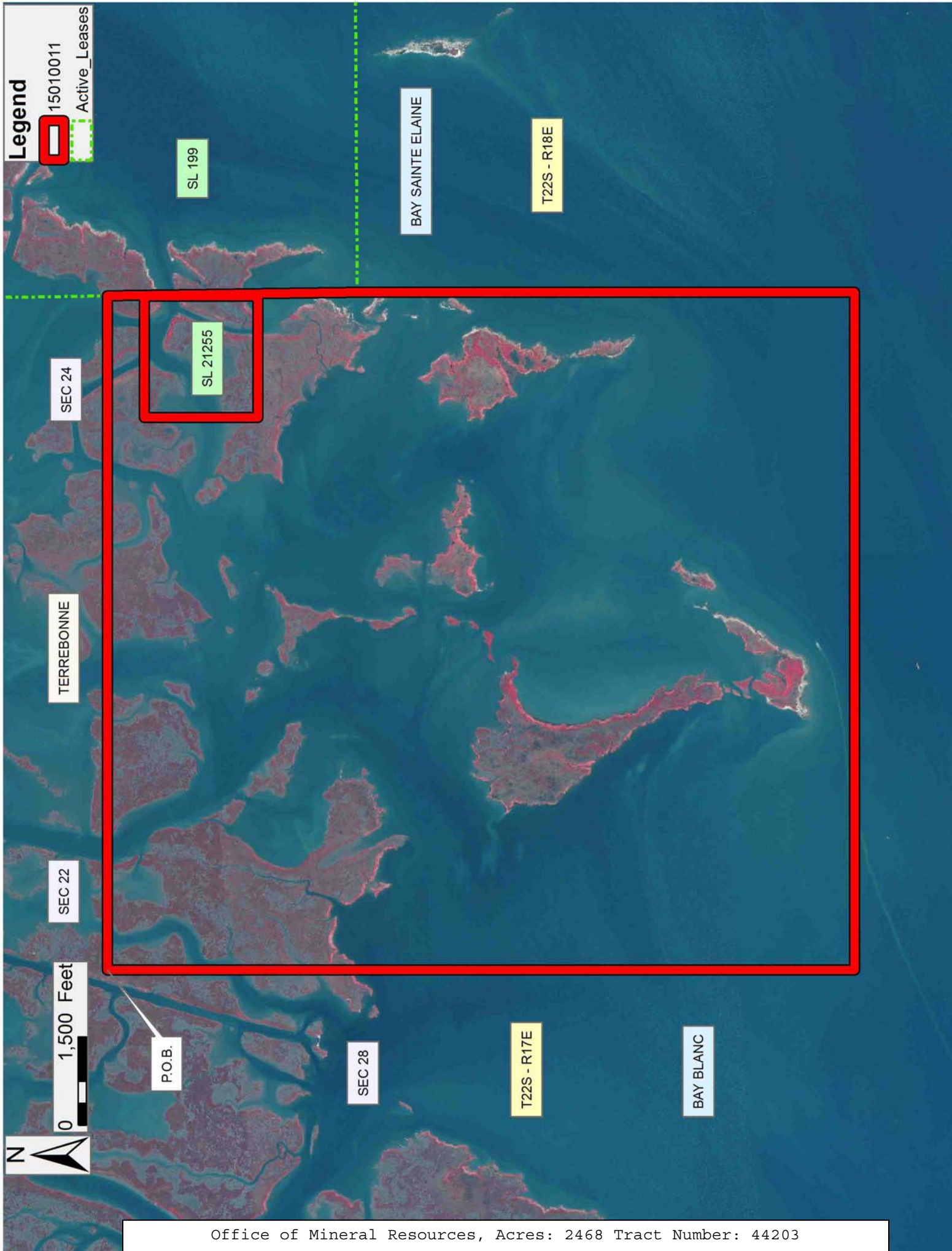
NOTE: The above description of the Tract nominated for lease has been provided and corrected, where required, exclusively by the nomination party. Any mineral lease selected from this Tract and awarded by the Louisiana State Mineral and Energy Board shall be without warranty of any kind, either express, implied, or statutory, including, but not limited to, the implied warranties of merchantability and fitness for a particular purpose. Should the mineral lease awarded by the Louisiana State Mineral and Energy Board be subsequently modified, cancelled or abrogated due to the existence of conflicting leases, operating agreements, private claims or other future obligations or conditions which may affect all or any portion of the leased Tract, it shall not relieve the Lessee of the obligation to pay any bonus due thereon to the Louisiana State Mineral and Energy Board, nor shall the Louisiana State Mineral and Energy Board be obligated to refund any consideration paid by the Lessor prior to such

modification, cancellation, or abrogation, including, but not limited to, bonuses, rentals and royalties.

NOTE: The State of Louisiana does hereby reserve, and this lease shall be subject to, the imprescriptible right of surface use in the nature of a servitude in favor of the Department of Natural Resources, including its Offices and Commissions, for the sole purpose of implementing, constructing, servicing and maintaining approved coastal zone management and/or restoration projects. Utilization of any and all rights derived under this lease by the mineral lessee, its agents, successors or assigns, shall not interfere with nor hinder the reasonable surface use by the Department of Natural Resources, its Offices or Commissions, as herein above reserved.

Applicant: ALLEN & KIRMSE, LTD.

| Bidder | Cash Payment | Price/ Acre | Rental | Oil | Gas | Other |
|--------|-----------------|----------------|--------|-----|-----|-------|
| | | | | | | |
| | | | | | | |
| | | | | | | |
| | | | | | | |



TRACT 44204 - Terrebonne Parish, Louisiana

All of the lands now or formerly constituting the beds and bottoms of all water bodies of every nature and description as to which title is vested in the State of Louisiana, together with all islands arising therein and other lands formed by accretion or by reliction, where allowed by law, excepting tax adjudicated lands, and not presently under mineral lease on January 14, 2015, situated in Terrebonne Parish, Louisiana, and more particularly described as follows: Beginning at a point having Coordinates of X = 2,204,888.00 and Y = 163,282.00; thence Northerly approximately 8,435 feet to the Southwest corner of State Lease No. 199, as amended; thence along the boundary of said State Lease No. 199 the following courses and distances: Easterly approximately 5,355 feet, Northerly approximately 1,400 feet and Easterly approximately 2,316 feet to the point of intersection with a North South line having a Coordinate of X = 2,212,550.00; thence South approximately 2,562 feet to the Northwest corner of State Lease No. 16510, as amended having Coordinates of X = 2,212,550.00 and Y = 170,600.00; thence South 2,710.00 feet along the boundary of said State Lease No. 16510 to its Southwest corner and the Northwest corner of State Lease No. 16511 having Coordinates of X = 2,212,550.00 and Y = 167,890.00; thence along the boundary of said State Lease No. 16511 the following courses and distances: South approximately 300 feet and Southeasterly approximately 585 feet to the Northwest corner of State Lease No. 16705, as amended having a Coordinate of X = 2,213,128.02; thence along the boundary of said State Lease No. 16705 the following courses and distances: South approximately 2,290 feet to a point having Coordinates of X = 2,213,128.02 and Y = 165,209.74 and East 4,089.98 feet to a point having Coordinates of X = 2,217,218.00 and Y = 165,209.74; thence South 2,885.74 feet to a point having Coordinates of X = 2,217,218.00 and Y = 162,324.00; thence West 4,304.04 feet to a point having Coordinates of X = 2,212,913.96 and Y = 162,324.00; thence South 2,399.40 feet to the Northeast corner of State Lease No. 19477 having Coordinates of X = 2,212,913.96 and Y = 159,924.60; thence South 89 degrees 39 minutes 55 seconds West 4,172.50 feet along the boundary of said State Lease No. 19477 to its Northwest corner having Coordinates of X = 2,208,741.53 and Y = 159,900.22; thence West 3,853.53 feet to a point having Coordinates of X = 2,204,888.00 and Y = 159,900.22; thence North 3,381.78 feet to the point of beginning, **LESS AND EXCEPT** any portion of said State Lease No. 199, said State Lease No. 16511 and said State Lease No. 16705 that may lie within the above described tract, containing approximately **2,500 acres**, all as more particularly outlined on a plat on file in the Office of Mineral Resources, Department of Natural Resources. All bearings, distances and coordinates are based on Louisiana Coordinate System of 1927, (North or South Zone), where applicable.

NOTE: The above description of the Tract nominated for lease has been provided and corrected, where required, exclusively by the nomination party. Any mineral lease selected from this Tract and awarded by the Louisiana State Mineral and Energy Board shall be without warranty of any kind, either express, implied, or statutory, including, but not limited

to, the implied warranties of merchantability and fitness for a particular purpose. Should the mineral lease awarded by the Louisiana State Mineral and Energy Board be subsequently modified, cancelled or abrogated due to the existence of conflicting leases, operating agreements, private claims or other future obligations or conditions which may affect all or any portion of the leased Tract, it shall not relieve the Lessee of the obligation to pay any bonus due thereon to the Louisiana State Mineral and Energy Board, nor shall the Louisiana State Mineral and Energy Board be obligated to refund any consideration paid by the Lessor prior to such modification, cancellation, or abrogation, including, but not limited to, bonuses, rentals and royalties.

NOTE: The State of Louisiana does hereby reserve, and this lease shall be subject to, the imprescriptible right of surface use in the nature of a servitude in favor of the Department of Natural Resources, including its Offices and Commissions, for the sole purpose of implementing, constructing, servicing and maintaining approved coastal zone management and/or restoration projects. Utilization of any and all rights derived under this lease by the mineral lessee, its agents, successors or assigns, shall not interfere with nor hinder the reasonable surface use by the Department of Natural Resources, its Offices or Commissions, as herein above reserved.

Applicant: ALLEN & KIRMSE, LTD.

| Bidder | Cash Payment | Price/ Acre | Rental | Oil | Gas | Other |
|--------|-----------------|----------------|--------|-----|-----|-------|
| | | | | | | |
| | | | | | | |
| | | | | | | |
| | | | | | | |

Legend

15010013

Active_Leases

