

TRACT 44175 - Portion of Blocks 19, and 30, Breton Sound Area, Plaquemines Parish, Louisiana

All of the lands now or formerly constituting the beds and bottoms of all water bodies of every nature and description as to which title is vested in the State of Louisiana, together with all islands arising therein and other lands formed by accretion or by reliction, where allowed by law, excepting tax adjudicated lands, and not presently under mineral lease on January 14, 2015, situated in Plaquemines Parish, Louisiana, and more particularly described as follows: Beginning at a point on the East line of Block 19, Breton Sound Area, also being a point on the West line of Block 20, Breton Sound Area, having Coordinates of X = 2,679,600.00 and Y = 338,085.98; thence South 10,435.22 feet to a point on the East line of Block 30, Breton Sound Area, also being a point on the West line of Block 29, Breton Sound Area, having Coordinates of X = 2,679,600.00 and Y = 327,650.76; thence West 10,435.22 feet to a point within said Block 30, having Coordinates of X = 2,669,164.78 and Y = 327,650.76; thence North 9,915.60 feet to a point on the boundary of the Southern portion of State Lease No. 16610, as amended, also being within said Block 19 having Coordinates of X = 2,669,164.78 and Y = 337,566.36; thence along the boundary of said State Lease No. 16610 the following courses and distances: South 79 degrees 19 minutes 28 seconds East 262.64 feet to a point having Coordinates of X = 2,669,422.87 and Y = 337,517.71, South 79 degrees 51 minutes 41 seconds East 56.41 feet to a point having Coordinates of X = 2,669,478.40 and Y = 337,507.78, North 11 degrees 59 minutes 40 seconds West 95.37 feet to a point having Coordinates of X = 2,669,458.58 and Y = 337,601.07, North 17 degrees 48 minutes 57 seconds West 116.75 feet to a point having Coordinates of X = 2,669,422.86 and Y = 337,712.22, North 21 degrees 04 minutes 52 seconds West 148.91 feet to a point having Coordinates of X = 2,669,369.30 and Y = 337,851.16, North 23 degrees 01 minutes 23 seconds West 187.63 feet to a point having Coordinates of X = 2,669,295.92 and Y = 338,023.84 and North 25 degrees 14 minutes 30 seconds West 68.70 feet to a point having Coordinates of X = 2,669,266.62 and Y = 338,085.98; thence East 10,333.38 feet to the point of beginning, containing approximately **2,497.14 acres**, all as more particularly outlined on a plat on file in the Office of Mineral Resources, Department of Natural Resources. All bearings, distances and coordinates are based on Louisiana Coordinate System of 1927, (North or South Zone), where applicable.

NOTE: The above description of the Tract nominated for lease has been provided and corrected, where required, exclusively by the nomination party. Any mineral lease selected from this Tract and awarded by the Louisiana State Mineral and Energy Board shall be without warranty of any kind, either express, implied, or statutory, including, but not limited to, the implied warranties of merchantability and fitness for a particular purpose. Should the mineral lease awarded by the Louisiana State Mineral and Energy Board be subsequently modified, cancelled or abrogated due to the existence of conflicting leases, operating agreements, private claims or other future obligations or conditions which may affect all or any portion of the leased Tract, it shall not relieve the Lessee of the

obligation to pay any bonus due thereon to the Louisiana State Mineral and Energy Board, nor shall the Louisiana State Mineral and Energy Board be obligated to refund any consideration paid by the Lessor prior to such modification, cancellation, or abrogation, including, but not limited to, bonuses, rentals and royalties.

NOTE: The State of Louisiana does hereby reserve, and this lease shall be subject to, the imprescriptible right of surface use in the nature of a servitude in favor of the Department of Natural Resources, including its Offices and Commissions, for the sole purpose of implementing, constructing, servicing and maintaining approved coastal zone management and/or restoration projects. Utilization of any and all rights derived under this lease by the mineral lessee, its agents, successors or assigns, shall not interfere with nor hinder the reasonable surface use by the Department of Natural Resources, its Offices or Commissions, as herein above reserved.

NOTE: It appears, according to our records, that a portion of this Tract is located within the restrictive safety fairway area as set out by the Corps of Engineers, U.S. Army and/or the restrictive anchorage area as set out by the U.S. Coast Guard.

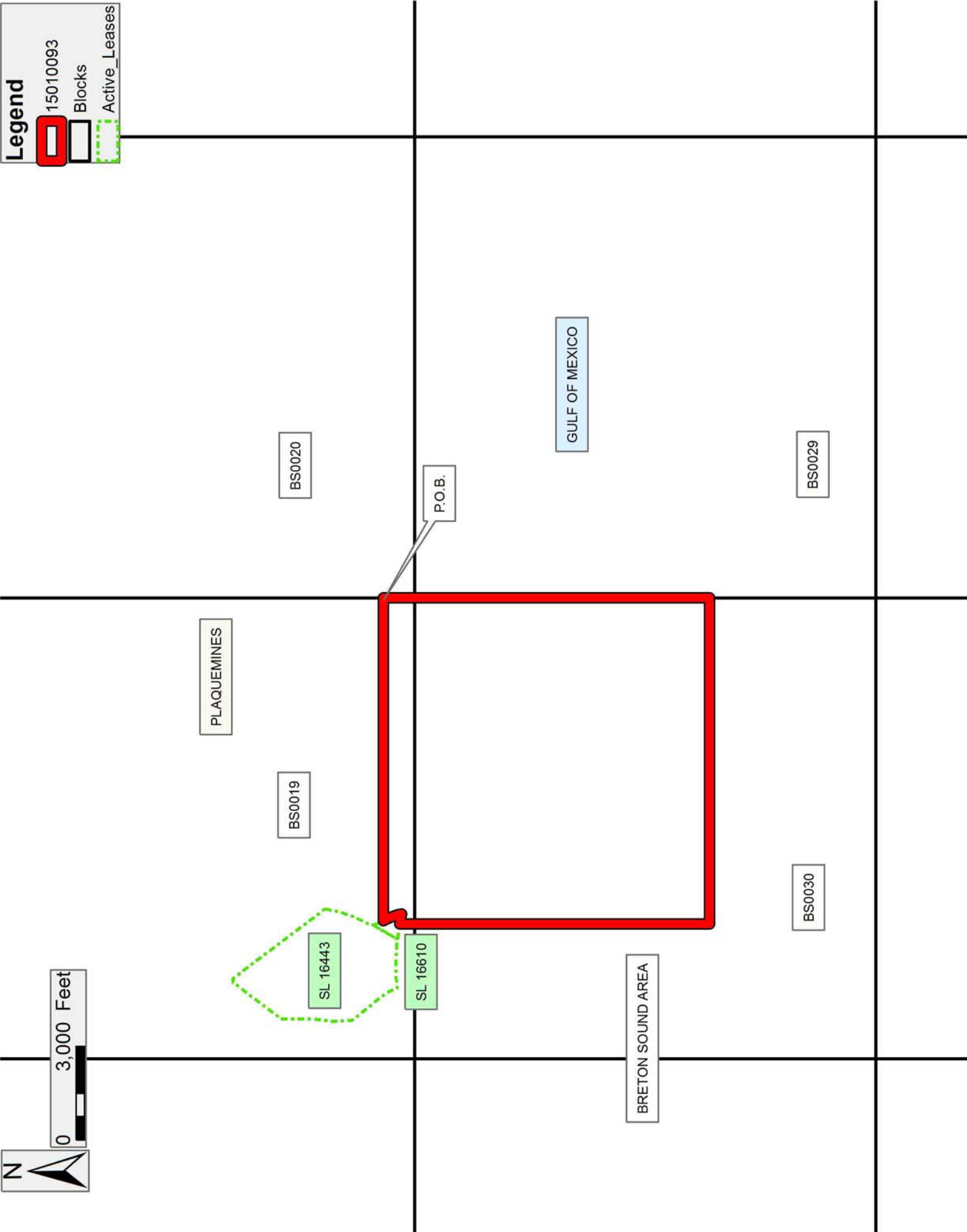
NOTE: This tract is located in an area designated by the Louisiana Legislature or the Wildlife and Fisheries Commission as a Public Oyster Seed Ground, Reservation, or area of Calcasieu or Sabine Lake. Proposed projects occurring in these areas will be evaluated on a case by case basis by Louisiana Department of Wildlife & Fisheries. Modifications to proposed project features including, but not limited to, access routes, well sites, flowlines, and appurtenant structures maybe required by the Louisiana Department of Wildlife and Fisheries. In addition, compensatory mitigation will be required to offset unavoidable habitat impacts.

Applicant: THEOPHILUS OIL, GAS & LAND SERVICES, LLC

Bidder	Cash Payment	Price/Acre	Rental	Oil	Gas	Other

Legend

- 15010093
- Blocks
- Active_Leases



TRACT 44176 - Portion of Blocks 18, 19, 30, and 31, Breton Sound Area, Plaquemines Parish, Louisiana

All of the lands now or formerly constituting the beds and bottoms of all water bodies of every nature and description as to which title is vested in the State of Louisiana, together with all islands arising therein and other lands formed by accretion or by reliction, where allowed by law, excepting tax adjudicated lands, and not presently under mineral lease on January 14, 2015, situated in Plaquemines Parish, Louisiana, and more particularly described as follows: Beginning at a point within Block 18, Breton Sound Area, having Coordinates of X = 2,658,729.56 and Y = 338,085.98; thence East 8,148.54 feet to a point within Block 19, Breton Sound Area, also being a point on the boundary of State Lease No. 16443, as amended, having Coordinates of X = 2,666,878.10 and Y = 338,085.98; thence along the boundary of said State Lease No. 16443, the following courses and distances: South 38 degrees 35 minutes 46 seconds East 63.13 feet to a point having Coordinates of X = 2,666,917.48 and Y = 338,036.64, South 31 degrees 45 minutes 38 seconds East 121.25 feet to a point having Coordinates of X = 2,666,981.30 and Y = 337,933.55, South 28 degrees 35 minutes 22 seconds East 49.76 feet to a point having Coordinates of X = 2,667,005.11 and Y = 337,889.86, South 22 degrees 36 minutes 27 seconds East 99.79 feet to a point having Coordinates of X = 2,667,043.47 and Y = 337,797.74, South 20 degrees 44 minutes 54 seconds East 115.48 feet to a point having Coordinates of X = 2,667,084.38 and Y = 337,689.75, South 21 degrees 15 minutes 32 seconds East 52.95 feet to a point having Coordinates of X = 2,667,103.58 and Y = 337,640.40, North 82 degrees 36 minutes 08 seconds East 154.01 feet to a point having Coordinates of X = 2,667,256.31 and Y = 337,660.23, North 84 degrees 17 minutes 19 seconds East 159.47 feet to a point having Coordinates of X = 2,667,414.99 and Y = 337,676.10, North 87 degrees 18 minutes 25 seconds East 168.78 feet to a point having Coordinates of X = 2,667,583.58 and Y = 337,684.03, North 89 degrees 37 minutes 10 seconds East 299.53 feet to a point having Coordinates of X = 2,667,883.10 and Y = 337,686.02, South 86 degrees 56 minutes 02 seconds East 222.47 feet to a point having Coordinates of X = 2,668,105.25 and Y = 337,674.12 and South 87 degrees 17 minutes 55 seconds East 210.47 feet to a point on the boundary of the Southern portion of State Lease No. 16610, as amended, having Coordinates of X = 2,668,315.49 and Y = 337,664.20; thence along said boundary of said Southern portion of said State Lease No. 16610 the following courses and distances: South 86 degrees 36 minutes 02 seconds East 200.68 feet to a point having Coordinates of X = 2,668,515.82 and Y = 337,652.30, South 82 degrees 37 minutes 47 seconds East 154.19 feet to a point having Coordinates of X = 2,668,668.74 and Y = 337,632.52, South 63 degrees 26 minutes 06 seconds East 0.02 feet to a point having Coordinates of X = 2,668,668.76 and Y = 337,632.51, South 82 degrees 37 minutes 36 seconds East 244.99 feet to a point having Coordinates of X = 2,668,911.72 and Y = 337,601.07, South 82 degrees 15 minutes 02 seconds East 250.22 feet to a point having Coordinates of X = 2,669,159.65 and Y = 337,567.33 and South 79 degrees 19 minutes 28 seconds East 5.22 feet to a point having Coordinates of X = 2,669,164.78 and Y = 337,566.36; thence South 9,915.60 feet to a point

located within Block 30, Breton Sound Area, having Coordinates of X = 2,669,164.78 and Y = 327,650.76; thence West 10,435.22 feet to a point within Block 31, Breton Sound Area, having Coordinates of X = 2,658,729.56 and Y = 327,650.76; thence North 10,435.22 feet to the point of beginning, containing approximately **2,478.35 acres**, all as more particularly outlined on a plat on file in the Office of Mineral Resources, Department of Natural Resources. All bearings, distances and coordinates are based on Louisiana Coordinate System of 1927, (North or South Zone), where applicable.

NOTE: The above description of the Tract nominated for lease has been provided and corrected, where required, exclusively by the nomination party. Any mineral lease selected from this Tract and awarded by the Louisiana State Mineral and Energy Board shall be without warranty of any kind, either express, implied, or statutory, including, but not limited to, the implied warranties of merchantability and fitness for a particular purpose. Should the mineral lease awarded by the Louisiana State Mineral and Energy Board be subsequently modified, cancelled or abrogated due to the existence of conflicting leases, operating agreements, private claims or other future obligations or conditions which may affect all or any portion of the leased Tract, it shall not relieve the Lessee of the obligation to pay any bonus due thereon to the Louisiana State Mineral and Energy Board, nor shall the Louisiana State Mineral and Energy Board be obligated to refund any consideration paid by the Lessor prior to such modification, cancellation, or abrogation, including, but not limited to, bonuses, rentals and royalties.

NOTE: The State of Louisiana does hereby reserve, and this lease shall be subject to, the imprescriptible right of surface use in the nature of a servitude in favor of the Department of Natural Resources, including its Offices and Commissions, for the sole purpose of implementing, constructing, servicing and maintaining approved coastal zone management and/or restoration projects. Utilization of any and all rights derived under this lease by the mineral lessee, its agents, successors or assigns, shall not interfere with nor hinder the reasonable surface use by the Department of Natural Resources, its Offices or Commissions, as herein above reserved.

NOTE: It appears, according to our records, that a portion of this Tract is located within the restrictive safety fairway area as set out by the Corps of Engineers, U.S. Army and/or the restrictive anchorage area as set out by the U.S. Coast Guard.




NOTE: This tract is located in an area designated by the Louisiana Legislature or the Wildlife and Fisheries Commission as a Public Oyster Seed Ground, Reservation, or area of Calcasieu or Sabine Lake. Proposed projects occurring in these areas will be evaluated on a case by case basis by Louisiana Department of Wildlife & Fisheries. Modifications to proposed project features including, but not limited to, access routes,

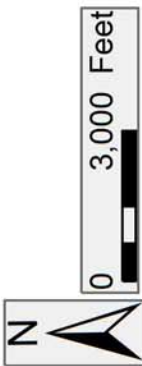
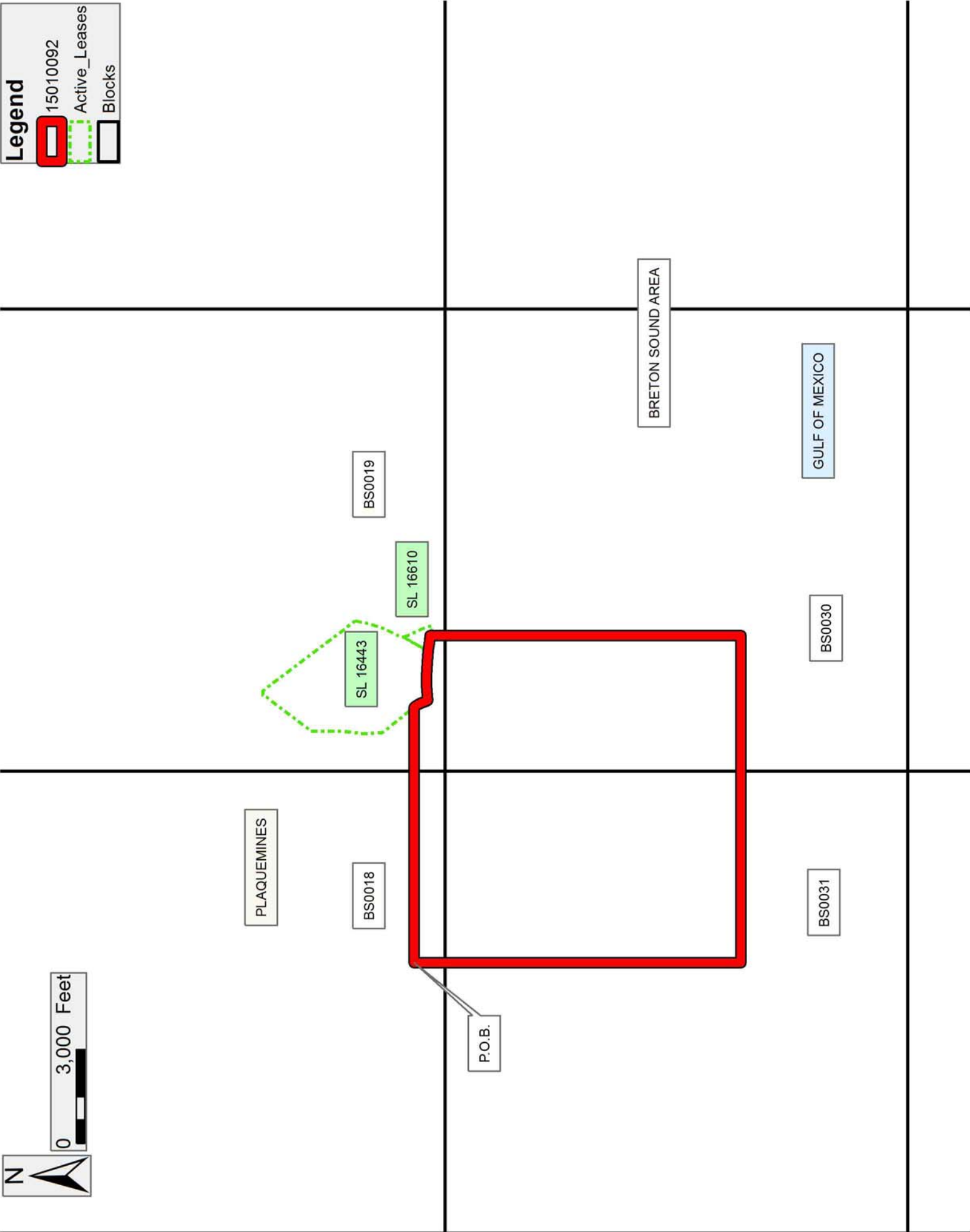
well sites, flowlines, and appurtenant structures maybe required by the Louisiana Department of Wildlife and Fisheries. In addition, compensatory mitigation will be required to offset unavoidable habitat impacts.

Applicant: THEOPHILUS OIL, GAS & LAND SERVICES, LLC

Bidder	Cash Payment	Price/Acre	Rental	Oil	Gas	Other

Legend

-  15010092
-  Active_Leases
-  Blocks



TRACT 44177 - Portion of Blocks 17, 18, 31, and 32, Breton Sound Area, Plaquemines Parish, Louisiana

All of the lands now or formerly constituting the beds and bottoms of all water bodies of every nature and description as to which title is vested in the State of Louisiana, together with all islands arising therein and other lands formed by accretion or by reliction, where allowed by law, excepting tax adjudicated lands, and not presently under mineral lease on January 14, 2015, situated in Plaquemines Parish, Louisiana, and more particularly described as follows: Beginning at a point within Block 17, Breton Sound Area, having Coordinates of X = 2,648,294.34 and Y = 338,085.98; thence East 10,435.22 feet to a point within Block 18, Breton Sound Area, having Coordinates of X = 2,658,729.56 and Y = 338,085.98; thence South 10,435.22 feet to a point within Block 31, Breton Sound Area, having Coordinates of X = 2,658,729.56 and Y = 327,650.76; thence West 10,435.22 feet to a point within Block 32, Breton Sound Area, having Coordinates of X = 2,648,294.34 and Y = 327,650.76; thence North 10,435.22 feet to the point of beginning, containing approximately **2,499.86 acres**, all as more particularly outlined on a plat on file in the Office of Mineral Resources, Department of Natural Resources. All bearings, distances and coordinates are based on Louisiana Coordinate System of 1927, (North or South Zone), where applicable.

NOTE: The above description of the Tract nominated for lease has been provided and corrected, where required, exclusively by the nomination party. Any mineral lease selected from this Tract and awarded by the Louisiana State Mineral and Energy Board shall be without warranty of any kind, either express, implied, or statutory, including, but not limited to, the implied warranties of merchantability and fitness for a particular purpose. Should the mineral lease awarded by the Louisiana State Mineral and Energy Board be subsequently modified, cancelled or abrogated due to the existence of conflicting leases, operating agreements, private claims or other future obligations or conditions which may affect all or any portion of the leased Tract, it shall not relieve the Lessee of the obligation to pay any bonus due thereon to the Louisiana State Mineral and Energy Board, nor shall the Louisiana State Mineral and Energy Board be obligated to refund any consideration paid by the Lessor prior to such modification, cancellation, or abrogation, including, but not limited to, bonuses, rentals and royalties.

NOTE: The State of Louisiana does hereby reserve, and this lease shall be subject to, the imprescriptible right of surface use in the nature of a servitude in favor of the Department of Natural Resources, including its Offices and Commissions, for the sole purpose of implementing, constructing, servicing and maintaining approved coastal zone management and/or restoration projects. Utilization of any and all rights derived under this lease by the mineral lessee, its agents, successors or assigns, shall not interfere with nor hinder the reasonable surface use by the Department of Natural Resources, its Offices or Commissions, as herein above reserved.

NOTE: It appears, according to our records, that a portion of this Tract is located within the restrictive safety fairway area as set out by the Corps of Engineers, U.S. Army and/or the restrictive anchorage area as set out by the U.S. Coast Guard.

NOTE: This tract is located in an area designated by the Louisiana Legislature or the Wildlife and Fisheries Commission as a Public Oyster Seed Ground, Reservation, or area of Calcasieu or Sabine Lake. Proposed projects occurring in these areas will be evaluated on a case by case basis by Louisiana Department of Wildlife & Fisheries. Modifications to proposed project features including, but not limited to, access routes, well sites, flowlines, and appurtenant structures maybe required by the Louisiana Department of Wildlife and Fisheries. In addition, compensatory mitigation will be required to offset unavoidable habitat impacts.

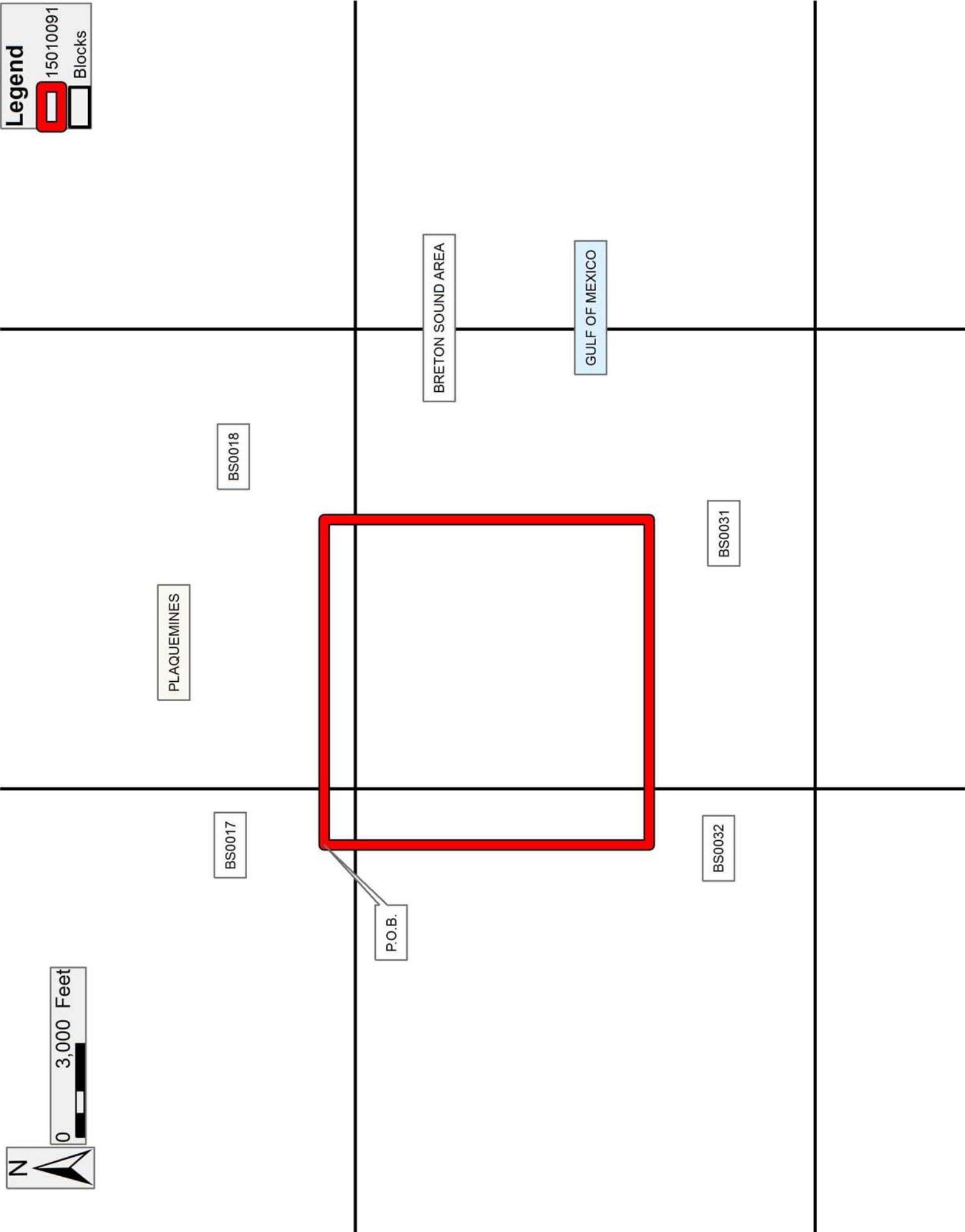
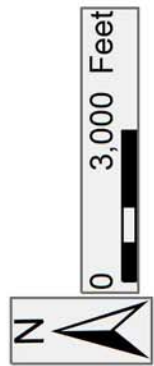
Applicant: THEOPHILUS OIL, GAS & LAND SERVICES, LLC

Bidder	Cash Payment	Price/Acre	Rental	Oil	Gas	Other

Legend

 15010091

 Blocks



TRACT 44178 - Portion of Blocks 17, and 32, Breton Sound Area, Plaquemines Parish, Louisiana

All of the lands now or formerly constituting the beds and bottoms of all water bodies of every nature and description as to which title is vested in the State of Louisiana, together with all islands arising therein and other lands formed by accretion or by reliction, where allowed by law, excepting tax adjudicated lands, and not presently under mineral lease on January 14, 2015, situated in Plaquemines Parish, Louisiana, and more particularly described as follows: Beginning at a point within Block 17, Breton Sound Area, having Coordinates of X = 2,637,859.12 and Y = 338,085.98; thence East 10,435.22 feet to a point having Coordinates of X = 2,648,294.34 and Y = 338,085.98; thence South 10,435.22 feet to a point within Block 32, Breton Sound Area, having Coordinates of X = 2,648,294.34 and Y = 327,650.76; thence West 1,694.34 feet to a point on the Eastern boundary of State Lease No. 1227, as amended, having Coordinates of X = 2,646,600.00 and Y = 327,650.76; thence along the boundary of said State Lease No. 1227, the following courses and distances: North 3,771.24 feet to a point having Coordinates of X = 2,646,600.00 and Y = 331,422.00 and Westerly on a curve to the left, having a radius of 33,940.00 feet and arc length of 3,651.61 feet to a point having Coordinates of X = 2,643,255.00 and Y = 332,882.26, also being a point on the boundary of State Lease No. 21247; thence along the boundary of said State Lease No. 21247 the following courses and distances: North 4,197.74 feet to a point on the North line of said Block 32, having Coordinates of X = 2,643,255.00 and Y = 337,080.00 and West 5,395.88 feet along said North line of said Block 32 to a point having Coordinates of X = 2,637,859.12 and Y = 337,080.00; thence North 1,005.98 feet to the point of beginning, containing approximately **983.43 acres**, all as more particularly outlined on a plat on file in the Office of Mineral Resources, Department of Natural Resources. All bearings, distances and coordinates are based on Louisiana Coordinate System of 1927, (North or South Zone), where applicable.

NOTE: The above description of the Tract nominated for lease has been provided and corrected, where required, exclusively by the nomination party. Any mineral lease selected from this Tract and awarded by the Louisiana State Mineral and Energy Board shall be without warranty of any kind, either express, implied, or statutory, including, but not limited to, the implied warranties of merchantability and fitness for a particular purpose. Should the mineral lease awarded by the Louisiana State Mineral and Energy Board be subsequently modified, cancelled or abrogated due to the existence of conflicting leases, operating agreements, private claims or other future obligations or conditions which may affect all or any portion of the leased Tract, it shall not relieve the Lessee of the obligation to pay any bonus due thereon to the Louisiana State Mineral and Energy Board, nor shall the Louisiana State Mineral and Energy Board be obligated to refund any consideration paid by the Lessor prior to such modification, cancellation, or abrogation, including, but not limited to, bonuses, rentals and royalties.




NOTE: The State of Louisiana does hereby reserve, and this lease shall be subject to, the imprescriptible right of surface use in the nature of a servitude in favor of the Department of Natural Resources, including its Offices and Commissions, for the sole purpose of implementing, constructing, servicing and maintaining approved coastal zone management and/or restoration projects. Utilization of any and all rights derived under this lease by the mineral lessee, its agents, successors or assigns, shall not interfere with nor hinder the reasonable surface use by the Department of Natural Resources, its Offices or Commissions, as herein above reserved.

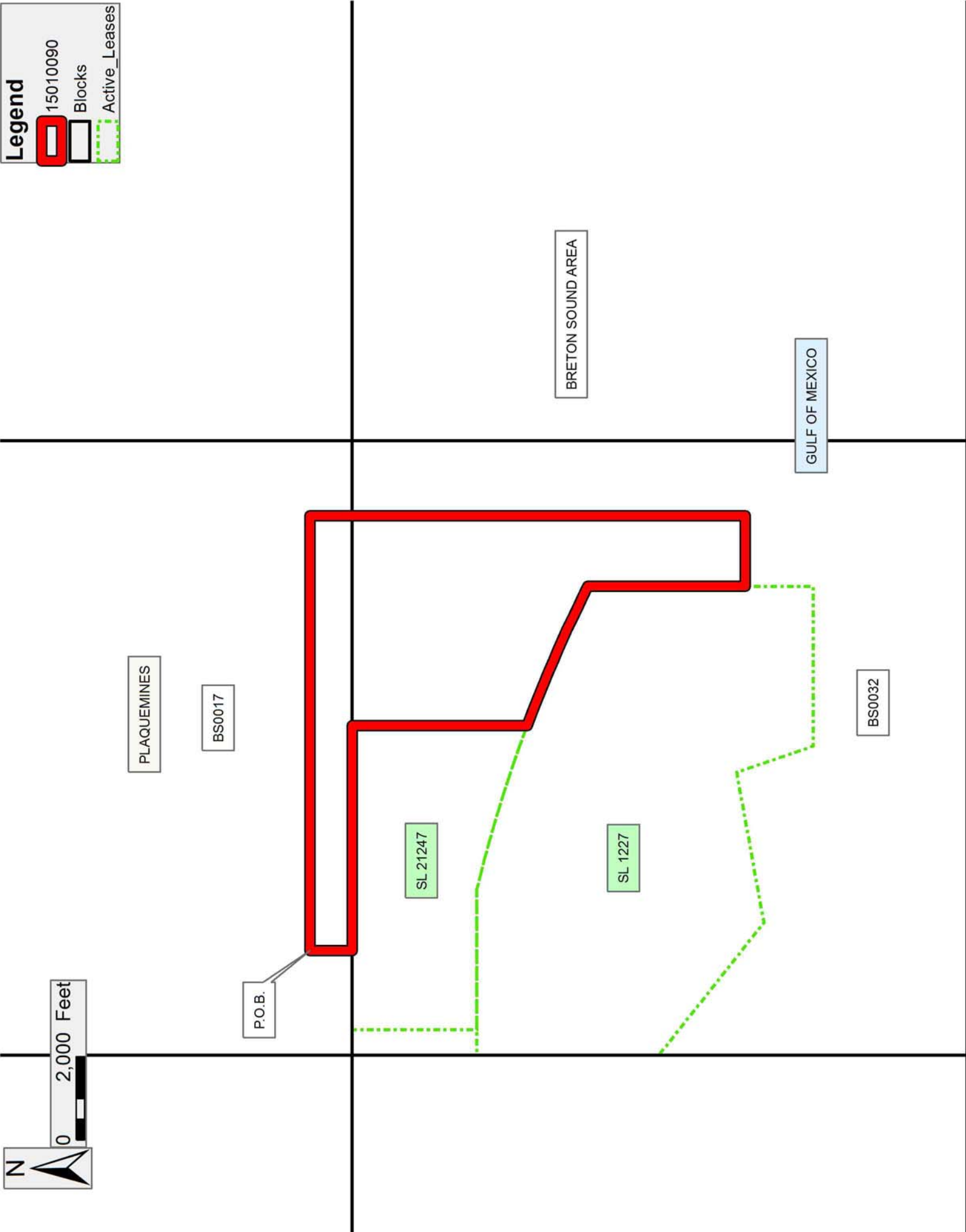
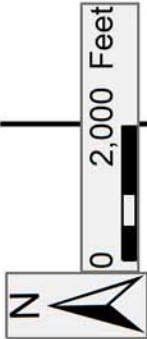
NOTE: This tract is located in an area designated by the Louisiana Legislature or the Wildlife and Fisheries Commission as a Public Oyster Seed Ground, Reservation, or area of Calcasieu or Sabine Lake. Proposed projects occurring in these areas will be evaluated on a case by case basis by Louisiana Department of Wildlife & Fisheries. Modifications to proposed project features including, but not limited to, access routes, well sites, flowlines, and appurtenant structures maybe required by the Louisiana Department of Wildlife and Fisheries. In addition, compensatory mitigation will be required to offset unavoidable habitat impacts.

Applicant: THEOPHILUS OIL, GAS & LAND SERVICES, LLC

Bidder	Cash Payment	Price/Acre	Rental	Oil	Gas	Other

Legend

-  15010090
-  Blocks
-  Active_Leases



TRACT 44179 - Jefferson Parish, Louisiana

All of the lands now or formerly constituting the beds and bottoms of all water bodies of every nature and description as to which title is vested in the State of Louisiana, together with all islands arising therein and other lands formed by accretion or by reliction, where allowed by law, excepting tax adjudicated lands, and not presently under mineral lease on January 14, 2015, situated in Jefferson Parish, Louisiana, and more particularly described as follows: Beginning at a point having Coordinates of X = 2,397,536.06 and Y = 335,228.68; thence Northeasterly approximately 4,958 feet to a point on the boundary of State Lease No. 356, as amended; thence along said boundary of said State Lease No. 356, the following courses: Southwesterly, Southerly, Southeasterly and Southerly to the most North Northeast corner of State Lease No. 21344, having a Coordinate of Y = 324,689.79; thence along the boundary of said State Lease No. 21344 the following courses and distances: West approximately 734 feet to a point having Coordinates of X = 2,405,597.00 and Y = 324,689.79 and South 3,520.79 feet to its Southwest corner, also being the Northeast corner of State Lease No. 18441 having Coordinates of X = 2,405,597.00 and Y = 321,169.00; thence West 8,060.94 feet to a point having Coordinates of X = 2,397,536.06 and Y = 321,169.00; thence North 14,059.68 feet to the point of beginning, **LESS AND EXCEPT** all that portion of State Lease No. 356, as amended, that may lie within the above described tract, containing approximately **354 acres**, all as more particularly outlined on a plat on file in the Office of Mineral Resources, Department of Natural Resources. All bearings, distances and coordinates are based on Louisiana Coordinate System of 1927, (North or South Zone), where applicable.

NOTE: The above description of the Tract nominated for lease has been provided and corrected, where required, exclusively by the nomination party. Any mineral lease selected from this Tract and awarded by the Louisiana State Mineral and Energy Board shall be without warranty of any kind, either express, implied, or statutory, including, but not limited to, the implied warranties of merchantability and fitness for a particular purpose. Should the mineral lease awarded by the Louisiana State Mineral and Energy Board be subsequently modified, cancelled or abrogated due to the existence of conflicting leases, operating agreements, private claims or other future obligations or conditions which may affect all or any portion of the leased Tract, it shall not relieve the Lessee of the obligation to pay any bonus due thereon to the Louisiana State Mineral and Energy Board, nor shall the Louisiana State Mineral and Energy Board be obligated to refund any consideration paid by the Lessor prior to such modification, cancellation, or abrogation, including, but not limited to, bonuses, rentals and royalties.

NOTE: The State of Louisiana does hereby reserve, and this lease shall be subject to, the imprescriptible right of surface use in the nature of a servitude in favor of the Department of Natural Resources, including its Offices and Commissions, for the sole purpose of implementing, constructing, servicing and maintaining approved coastal zone management

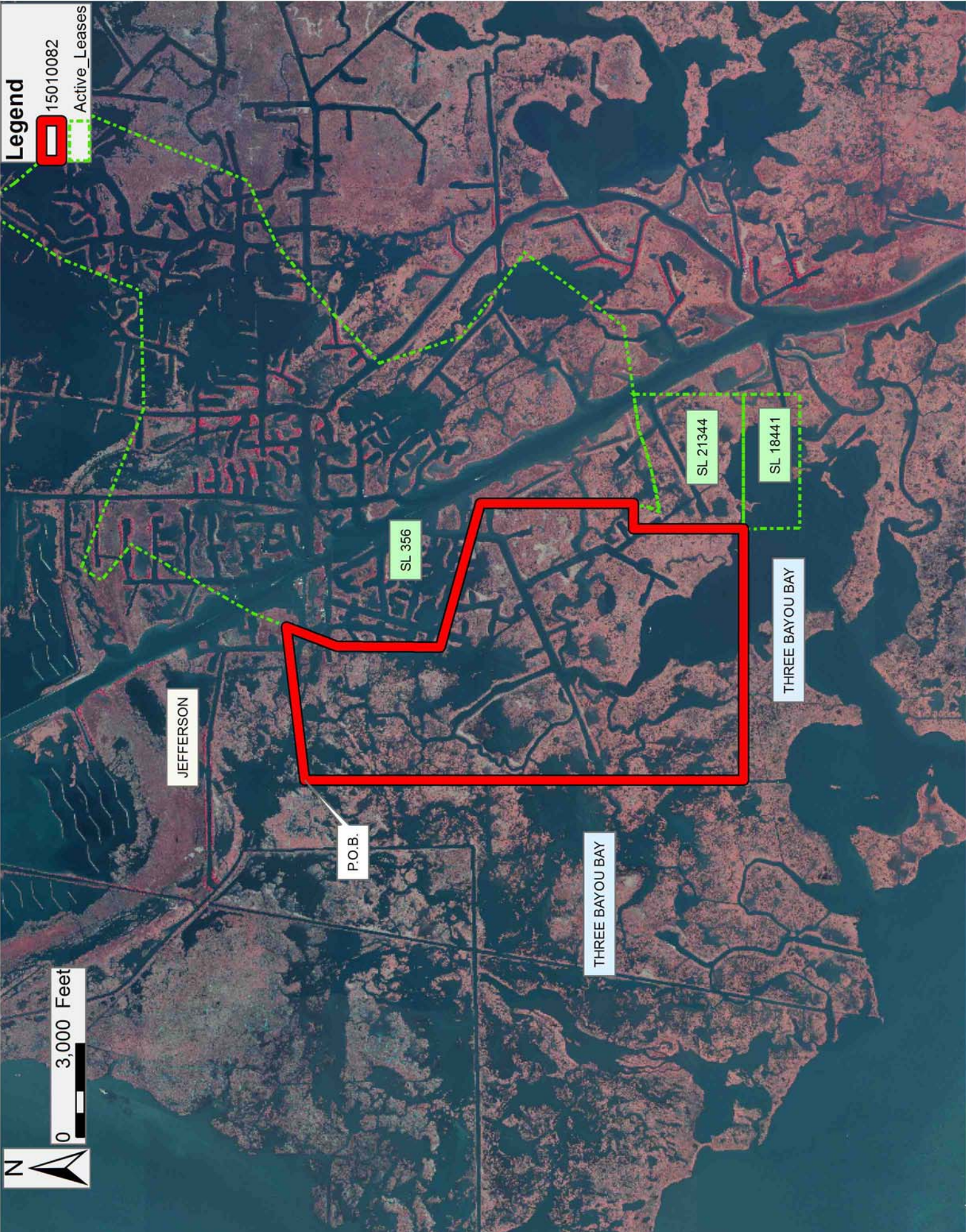
and/or restoration projects. Utilization of any and all rights derived under this lease by the mineral lessee, its agents, successors or assigns, shall not interfere with nor hinder the reasonable surface use by the Department of Natural Resources, its Offices or Commissions, as herein above reserved.

Applicant: THEOPHILUS OIL, GAS & LAND SERVICES, LLC

Bidder	Cash Payment	Price/Acre	Rental	Oil	Gas	Other

Legend

- 15010082
- Active_Leases



TRACT 44180 - Jefferson Parish, Louisiana

All of the lands now or formerly constituting the beds and bottoms of all water bodies of every nature and description as to which title is vested in the State of Louisiana, together with all islands arising therein and other lands formed by accretion or by reliction, where allowed by law, excepting tax adjudicated lands, and not presently under mineral lease on January 14, 2015, situated in Jefferson Parish, Louisiana, and more particularly described as follows: Beginning at a point having Coordinates of X = 2,402,458.56 and Y = 335,824.91; thence South 73 degrees, 00 minutes 03 seconds East 9,162.89 feet to a point having Coordinates of X = 2,411,221.11 and Y = 333,146.07; thence South 45 degrees 48 minutes 52 seconds West 471.09 feet to a point having Coordinates of X = 2,410,883.30 and Y = 332,817.73; thence South 18 degrees 43 minutes 19 seconds East 2,739.32 feet to a point having Coordinates of X = 2,411,762.55 and Y = 330,223.35; thence South 52 degrees 36 minutes 01 seconds East 3,353.36 feet to a point having Coordinates of X = 2,414,426.52 and Y = 328,186.62; thence South 36 degrees 38 minutes 01 seconds West 3,936.91 feet to a point having Coordinates of X = 2,412,077.38 and Y = 325,027.38; thence South 81 degrees 06 minutes 23 seconds West 2,183.63 feet to a point having Coordinates of X = 2,409,920.00 and Y = 324,689.79; thence South 81 degrees 43 minutes 43 seconds West 1,177.64 feet to a point having Coordinates of X = 2,408,754.61 and Y = 324,520.37; thence South 72 degrees 31 minutes 26 seconds West 1,304.69 feet to a point having Coordinates of X = 2,407,510.14 and Y = 324,128.56; thence South 77 degrees 49 minutes 56 seconds West 1,143.07 feet to a point having Coordinates of X = 2,406,392.75 and Y = 323,887.63; thence South 82 degrees 47 minutes 53 seconds West 248.79 feet to a point having Coordinates of X = 2,406,145.92 and Y = 323,856.44; thence North 22 degrees 14 minutes 54 seconds East 503.25 feet to a point having Coordinates of X = 2,406,336.46 and Y = 324,322.22; thence North 13 degrees 18 minutes 32 seconds East 377.71 feet to a point having Coordinates of X = 2,406,423.41 and Y = 324,689.79; thence North 4,915.44 feet to a point having Coordinates of X = 2,406,423.41 and Y = 329,605.23; thence North 74 degrees 25 minutes 29 seconds West 4794.10 feet to a point having Coordinates of X = 2,401,805.36 and Y = 330,892.46; thence North 00 degrees 20 minutes 01 seconds East 3,303.54 feet to a point having Coordinates of X = 2,401,824.60 and Y = 334,195.94; thence North 21 degrees 15 minutes 54 seconds East 1,747.98 feet to the point of beginning, **LESS AND EXCEPT** in their entirety the following State Leases from the above described tract: **State Lease No. 356, as amended, State Lease No. 21343, State Lease No. 21344, State Lease No. 10439, as amended,** being more fully described as follows: Beginning at a point having Coordinates of X = 2,408,341.08 and Y = 327,055.82; thence along the boundaries of said State Lease No.10439 the following courses: North 86 degrees 17 minutes 30 seconds East 59.70 feet to a point having Coordinates of X = 2,408,400.66 and Y = 327,059.68; South 00 degrees 00 minutes 02 seconds East 597.52 feet to a point having Coordinates of X = 2,408,400.66 and Y = 326,462.16; South 13 degrees 12 minutes 29 seconds West 243.60 feet to a point having Coordinates of X = 2,408,345.00 and Y =

326,225.01; South 14 degrees 44 minutes 37 seconds West 432.23 feet to a point having Coordinates of X = 2,408,235.00 and Y = 325,807.01; South 16 degrees 55 minutes 39 seconds West 240.42 feet to a point having Coordinates of X = 2,408,165.00 and Y = 325,577.00; South 18 degrees 55 minutes 29 seconds West 148.00 feet to a point having Coordinates of X = 2,408,117.00 and Y = 325,437.00; South 45 degrees 56 minutes 21 seconds West 86.28 feet to a point having Coordinates of X = 2,408,055.00 and Y = 325,377.00; South 54 degrees 46 minutes 57 seconds West 104.04 feet to a point having Coordinates of X = 2,407,970.00 and Y = 325,317.00; South 59 degrees 02 minutes 10 seconds West 110.79 feet to a point having Coordinates of X = 2,407,875.00 and Y = 325,260.00; South 68 degrees 55 minutes 52 seconds West 135.83 feet to a point having Coordinates of X = 2,407,748.25 and Y = 325,211.17; South 74 degrees 08 minutes 14 seconds West 315.26 feet to a point having Coordinates of X = 2,407,445.00 and Y = 325,125.00; South 78 degrees 07 minutes 51 seconds West 301.44 feet to a point having Coordinates of X = 2,407,150.00 and Y = 325,063.00; South 80 degrees 34 minutes 50 seconds West 219.97 feet to a point having Coordinates of X = 2,406,933.00 and Y = 325,027.00; South 82 degrees 57 minutes 43 seconds West 70.91 feet to a point having Coordinates of X = 2,406,862.62 and Y = 325,018.31; North 30 degrees 18 minutes 40 seconds East 500.05 feet to a point having Coordinates of X = 2,407,114.99 and Y = 325,450.01; North 28 degrees 29 minutes 44 seconds East 280.33 feet to a point having Coordinates of X = 2,407,248.74 and Y = 325,696.37; Northeasterly along an arc to the right having a radius of 1,223.25 feet and a long chord of North 47 degrees 17 minutes 24 seconds East 317.66 feet to a point having Coordinates of X = 2,407,482.15 and Y = 325,911.84; Northeasterly along an arc to the left having a radius of 1,768.42 feet and a long chord of North 36 degrees 03 minutes 17 seconds East 622.15 feet to a point having Coordinates of X = 2,407,848.32 and Y = 326,414.82; Northeasterly along an arc to the right having a radius of 964.84 feet and a long chord of North 32 degrees 42 minutes 17 seconds East 497.55 feet to a point having Coordinates of X = 2,408,117.15 and Y = 326,833.49 and North 45 degrees 12 minutes 19 seconds East 315.56 feet to the point of beginning.

State Lease No. 15092, as amended, being more fully described as follows: Beginning at a point having Coordinates of X = 2,408,767.58 and Y = 327,906.41; thence along the boundaries of said State Lease No. 15092, the following courses: North 52 degrees 48 minutes 02 seconds East 1,399.52 feet to a point having Coordinates of X = 2,409,882.35 and Y = 328,752.55; North 51 degrees 58 minutes 20 seconds East 814.46 feet to a point having Coordinates of X = 2,410,523.91 and Y = 329,254.29; North 49 degrees 55 minutes 00 seconds East 112.69 feet to a point having Coordinates of X = 2,410,610.13 and Y = 329,326.85; North 51 degrees 34 minutes 06 seconds East 756.42 feet to a point having Coordinates of X = 2,411,202.67 and Y = 329,797.03; North 52 degrees 12 minutes 04 seconds East 88.54 feet to a point having Coordinates of X = 2,411,272.63 and Y = 329,851.29; South 29 degrees 23 minutes 55 seconds West 117.65 feet to a point having Coordinates of X = 2,411,214.88 and Y = 329,748.79; South 34 degrees 16

minutes 20 seconds West 224.18 feet to a point having Coordinates of X = 2,411,088.64 and Y = 329,563.54; South 35 degrees 34 minutes 23 seconds West 188.31 feet to a point having Coordinates of X = 2,410,979.09 Y = 329,410.37; South 38 degrees 55 minutes 45 seconds West 240.32 feet to a point having Coordinates of X = 2,410,828.08 and Y = 329,223.42; South 42 degrees 06 minutes 21 seconds West 229.73 feet to a point having Coordinates of X = 2,410,674.05 and Y = 329,052.98; South 44 degrees 04 minutes 24 seconds West 321.71 feet to a point having Coordinates of X = 2,410,450.27 and Y = 328,821.85; South 46 degrees 44 minutes 51 seconds West 333.69 feet to a point having Coordinates of X = 2,410,207.23 and Y = 328,593.20; South 48 degrees 55 minutes 19 seconds West 524.57 feet to a point having Coordinates of X = 2,409,811.80 and Y = 328,248.51; South 52 degrees 28 minutes 12 seconds West 223.06 feet to a point having Coordinates of X = 2,409,634.91 and Y = 328,112.63; South 55 degrees 47 minutes 26 seconds West 468.63 feet to a point having Coordinates of X = 2,409,247.36 and Y = 327,849.16; South 58 degrees 24 minutes 58 seconds West 315.37 feet to a point having Coordinates of X = 2,408,978.70 and Y = 327,683.98; South 63 degrees 21 minutes 10 seconds West 321.17 feet to a point having Coordinates of X = 2,408,691.65 and Y = 327,539.94; North 19 degrees 48 minutes 01 seconds East 29.21 feet to a point having Coordinates of X = 2,408,701.54 and Y = 327,567.42; North 13 degrees 55 minutes 56 seconds East 188.86 feet to a point having Coordinates of X = 2,408,747.01 and Y = 327,750.73 and North 07 degrees 31 minutes 36 seconds East 157.04 feet to the point of beginning.

State Lease No. 16681, as amended; Northern Portion, Area "A", being more fully described as follows: Beginning at a point having Coordinates of X = 2,408,564.55 and Y = 327,270.69; thence North 28 degrees 31 minutes 50 seconds East 186.93 feet to a point having Coordinates of X = 2,408,653.83 and Y = 327,434.92; thence North 19 degrees 48 minutes 06 seconds East 111.62 feet to a point having Coordinates of X = 2,408,691.65 and Y = 327,539.94; thence North 63 degrees 21 minutes 10 seconds East 321.17 feet to a point having Coordinates of X = 2,408,978.70 and Y = 327,683.98; thence North 58 degrees 24 minutes 58 seconds East 315.37 feet to a point having Coordinates of X = 2,409,247.36 and Y = 327,849.16; thence North 55 degrees 47 minutes 26 seconds East 468.63 feet to a point having Coordinates of X = 2,409,634.91 and Y = 328,112.63; thence North 52 degrees 28 minutes 12 seconds East 223.06 feet to a point having Coordinates of X = 2,409,811.80 and Y = 328,248.51; thence North 48 degrees 55 minutes 19 seconds East 524.57 feet to a point having Coordinates of X = 2,410,207.23 and Y = 328,593.20; thence North 46 degrees 44 minutes 51 seconds East 333.69 feet to a point having Coordinates of X = 2,410,450.27 and Y = 328,821.85; thence North 44 degrees 04 minutes 24 seconds East 321.71 feet to a point having Coordinates of X = 2,410,674.05 and Y = 329,052.98; thence North 42 degrees 06 minutes 21 seconds East 229.73 feet to a point having Coordinates of X = 2,410,828.08 and Y = 329,223.42; thence North 38 degrees 55 minutes 44 seconds East 240.32 feet to a point having Coordinates of X = 2,410,979.09 and Y = 329,410.37; thence North 35

degrees 34 minutes 23 seconds East 188.31 feet to a point having
Coordinates of X = 2,411,088.64 and Y = 329,563.54; thence North 34
degrees 16 minutes 20 seconds East 224.18 feet to a point having
Coordinates of X = 2,411,214.88 and Y = 329,748.79; thence North 29
degrees 23 minutes 56 seconds East 117.65 feet to a point having
Coordinates of X = 2,411,272.63 and Y = 329,851.29; thence North 52
degrees 12 minutes 04 seconds East 248.04 feet to a point having
Coordinates of X = 2,411,468.62 and Y = 330,003.32; thence North 52
degrees 56 minutes 21 seconds East 356.93 feet to a point having
Coordinates of X = 2,411,753.45 and Y = 330,218.42; thence South 31
degrees 40 minutes 24 seconds West 491.54 feet to a point having
Coordinates of X = 2,411,495.36 and Y = 329,800.10; thence South 35
degrees 17 minutes 02 seconds West 240.56 feet to a point having
Coordinates of X = 2,411,356.40 and Y = 329,603.73; thence South 37
degrees 44 minutes 54 seconds West 466.82 feet to a point having
Coordinates of X = 2,411,070.62 and Y = 329,234.61; thence South 40
degrees 28 minutes 04 seconds West 321.99 feet to a point having
Coordinates of X = 2,410,861.64 and Y = 328,989.65; thence South 43
degrees 10 minutes 38 seconds West 355.33 feet to a point having
Coordinates of X = 2,410,618.50 and Y = 328,730.53; thence South 45
degrees 17 minutes 40 seconds West 391.88 feet to a point having
Coordinates of X = 2,410,339.98 and Y = 328,454.85; thence South 45
degrees 42 minutes 32 seconds West 165.40 feet to a point having
Coordinates of X = 2,410,221.59 and Y = 328,339.35; thence South 49
degrees 45 minutes 04 seconds West 217.25 feet to a point having
Coordinates of X = 2,410,055.77 and Y = 328,198.99; thence South 51
degrees 29 minutes 56 seconds West 222.50 feet to a point having
Coordinates of X = 2,409,881.64 and Y = 328,060.47; thence South 54
degrees 06 minutes 24 seconds West 300.92 feet to a point having
Coordinates of X = 2,409,637.87 and Y = 327,884.05; thence South 55
degrees 54 minutes 43 seconds West 228.79 feet to a point having
Coordinates of X = 2,409,448.39 and Y = 327,755.82; thence South 58
degrees 53 minutes 14 seconds West 314.43 feet to a point having
Coordinates of X = 2,409,179.19 and Y = 327,593.35; thence South 60
degrees 54 minutes 41 seconds West 338.78 feet to a point having
Coordinates of X = 2,408,883.14 and Y = 327,428.65, and South 63 degrees
37 minutes 38 seconds West 355.60 feet to the point of beginning.

State Lease No. 16681, as amended; Southern Portion, Area "B", being more fully described as follows: Beginning at a point on the Southeast line of said 7800 RC SUA, having Coordinates of X = 2,407,966.69 and Y = 327,441.11; thence along the boundaries of said 7800 RC SUA the following courses: Southwesterly 413.06 feet along a curve to the left having a radius of 2,880.00 feet whose chord bears South 43 degrees 30 minutes 36 seconds West 412.70 feet to a point having Coordinates of X = 2,407,682.55 and Y = 327,141.80; Southwesterly 1,234.28 feet along a curve to the right having a radius of 2,785.00 feet whose chord bears South 50 degrees 26 minutes 13 seconds West 1,224.20 feet to a point having Coordinates of X = 2,406,738.79 and Y = 326,362.07; Northeasterly 280.75 feet along a curve

to the right having a radius of 2,595.00 feet whose chord bears North 16 degrees 31 minutes 12 seconds East 280.61 feet to a point having Coordinates of X = 2,406,818.58 and Y = 326,631.10; Northeasterly 1,016.72 feet along a curve to the right having a radius of 1,860.00 feet whose chord bears North 26 degrees 18 minutes 39 seconds East 1,004.11 feet to a point having Coordinates of X = 2,407,263.65 and Y = 327,531.19 and Northeasterly 673.21 feet along a curve to the right having a radius of 2,795.00 feet whose chord bears North 54 degrees 51 minutes 00 seconds East 671.58 feet to a point on the Northwest line of said 7800 RC SUA having Coordinates of X = 2,407,812.76 and Y = 327,917.84; thence Southeasterly 500.96 feet along a curve to the left having a radius of 33,100.00 feet whose chord bears South 17 degrees 53 minutes 41 seconds East 500.96 feet to the point of beginning.

State Lease No. 20679, being more fully described as follows: Beginning at a point having Coordinates of X = 2,407,728.23 and Y = 326,810.24; thence North 48 degrees 06 minutes 16 seconds East 269.72 feet to a point having Coordinates of X = 2,407,929.00 and Y = 326,990.35; thence South 43 degrees 07 minutes 21 seconds West 25.94 feet to a point having Coordinates of X = 2,407,911.27 and Y = 326,971.42; thence South 23 degrees 42 minutes 39 seconds West 148.79 feet to a point having Coordinates of X = 2,407,851.44 and Y = 326,835.19; thence South 04 degrees 26 minutes 17 seconds West 58.40 feet to a point having Coordinates of X = 2,407,846.92 and Y = 326,776.96; thence South 39 degrees 34 minutes 14 seconds West 129.87 feet to a point having Coordinates of X = 2,407,764.19 and Y = 326,676.85; thence North 36 degrees 17 minutes 31 seconds West 41.52 feet to a point having Coordinates of X = 2,407,739.61 and Y = 326,710.32; thence North 06 degrees 29 minutes 56 seconds West 100.56 feet to the point of beginning.

State Lease No. 20680, being more fully described as follows: Beginning at a point having Coordinates of X = 2,407,528.72 and Y = 326,520.95; thence North 34 degrees 35 minutes 31 seconds East 117.14 feet to a point having Coordinates of X = 2,407,595.22 and Y = 326,617.38; thence South 46 degrees 58 minutes 40 seconds East 82.26 feet to a point having Coordinates of X = 2,407,655.36 and Y = 326,561.26; thence South 61 degrees 58 minutes 28 seconds East 15.69 feet to a point having Coordinates of X = 2,407,669.21 and Y = 326,553.88; thence South 37 degrees 08 minutes 41 seconds West 119.97 feet to a point having Coordinates of X = 2,407,596.77 and Y = 326,458.26; thence North 43 degrees 50 minutes 43 seconds West 13.09 feet to a point having Coordinates of X = 2,407,587.70 and Y = 326,467.70; thence North 47 degrees 55 minutes 35 seconds West 79.46 feet to the point of beginning.

State Lease No. 20942, as amended, being more fully described as follows: All that portion of said State Lease No. 20942, lying inside the boundary of the 7100 RE SUA Unit, Office of Conservation Order No. 76-CC-4, beginning at a point having Coordinates of X = 2,408,650.13 and Y = 327,733.77; thence South 69 degrees 51 minutes 02 seconds East 56.89 feet

to a point having Coordinates of X = 2,408,703.54 and Y = 327,714.17; thence South 18 degrees 01 minutes 20 seconds East 174.82 feet to a point having Coordinates of X = 2,408,757.63 and Y = 327,547.93; thence South 57 degrees 12 minutes 42 seconds West 411.76 feet to a point having Coordinates of X = 2,408,411.47 and Y = 327,324.95; thence Southwesterly 1,497.55 feet along an arc to the left having a chord bearing and distance of South 33 degrees 05 minutes 42 seconds West 1,465.87 feet and a radius of 2,095.00 feet to a point having Coordinates of X = 2,407,611.06 and Y = 326,096.89; thence Southwesterly 493.18 feet along an arc to the right having a chord bearing and distance of South 40 degrees 08 minutes 03 seconds West 484.34 feet and a radius of 750.00 feet to a point having Coordinates of X = 2,407,298.86 and Y = 325,726.59; thence South 58 degrees 48 minutes 31 seconds West 462.22 feet to a point having Coordinates of X = 2,406,903.46 and Y = 325,487.21; ; thence North 23 degrees 43 minutes 40 seconds East 1,388.27 feet to a point having Coordinates of X = 2,407,462.09 and Y = 326,758.13; thence Northeasterly 949.12 feet along an arc to the right having a chord bearing and distance of North 43 degrees 10 minutes 13 seconds East 927.19 feet and a radius of 1,270.00 feet to a point having Coordinates of X = 2,408,096.45 and Y = 327,434.35; thence North 61 degrees 35 minutes 47 seconds East 629.46 feet to the point of beginning, nominated tract containing approximately **45 acres**, all as more particularly outlined on a plat on file in the Office of Mineral Resources, Department of Natural Resources. All bearings, distances and coordinates are based on Louisiana Coordinate System of 1927, (North or South Zone), where applicable.

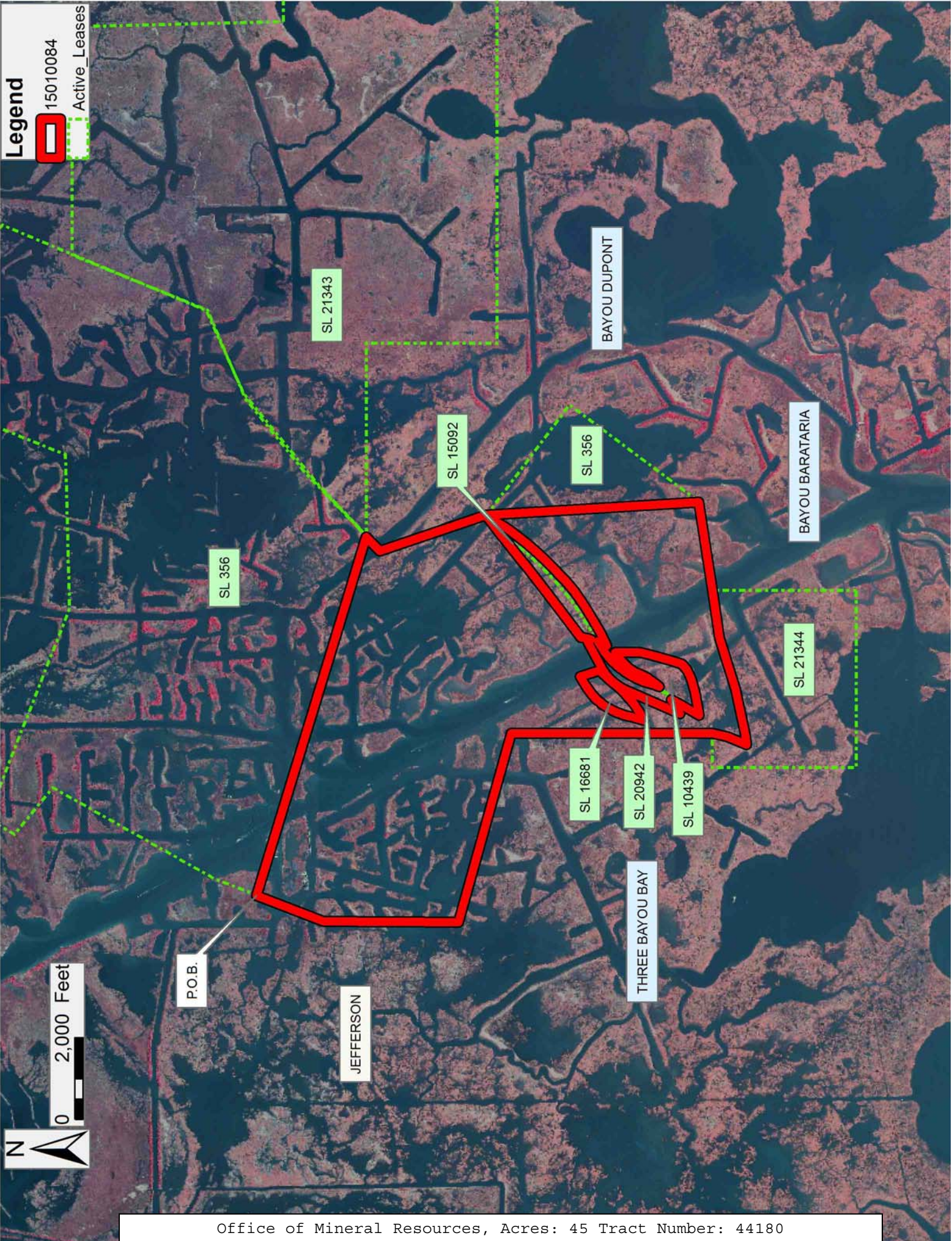
NOTE: The above description of the Tract nominated for lease has been provided and corrected, where required, exclusively by the nomination party. Any mineral lease selected from this Tract and awarded by the Louisiana State Mineral and Energy Board shall be without warranty of any kind, either express, implied, or statutory, including, but not limited to, the implied warranties of merchantability and fitness for a particular purpose. Should the mineral lease awarded by the Louisiana State Mineral and Energy Board be subsequently modified, cancelled or abrogated due to the existence of conflicting leases, operating agreements, private claims or other future obligations or conditions which may affect all or any portion of the leased Tract, it shall not relieve the Lessee of the obligation to pay any bonus due thereon to the Louisiana State Mineral and Energy Board, nor shall the Louisiana State Mineral and Energy Board be obligated to refund any consideration paid by the Lessor prior to such modification, cancellation, or abrogation, including, but not limited to, bonuses, rentals and royalties.

NOTE: The State of Louisiana does hereby reserve, and this lease shall be subject to, the imprescriptible right of surface use in the nature of a servitude in favor of the Department of Natural Resources, including its Offices and Commissions, for the sole purpose of implementing, constructing, servicing and maintaining approved coastal zone management and/or restoration projects. Utilization of any and all rights derived

under this lease by the mineral lessee, its agents, successors or assigns, shall not interfere with nor hinder the reasonable surface use by the Department of Natural Resources, its Offices or Commissions, as herein above reserved.

Applicant: THEOPHILUS OIL, GAS & LAND SERVICES, LLC

Bidder	Cash Payment	Price/Acre	Rental	Oil	Gas	Other



TRACT 44181 - Jefferson Parish, Louisiana

All of the lands now or formerly constituting the beds and bottoms of all water bodies of every nature and description as to which title is vested in the State of Louisiana, together with all islands arising therein and other lands formed by accretion or by reliction, where allowed by law, excepting tax adjudicated lands, and not presently under mineral lease on January 14, 2015, situated in Jefferson Parish, Louisiana, and more particularly described as follows: Beginning at a point on the boundary of State Lease No. 21343, having Coordinates of X = 2,415,963.34 and Y = 329,950.00; thence East 2,997.57 feet along said boundary of said State Lease No. 21343 to a point having Coordinates of X = 2,418,960.91 and Y = 329,950.00; thence South 6,562.63 feet to a point on the boundary of State Lease No. 21017, having Coordinates of X = 2,418,960.91 and Y = 323,387.37; thence South 43 degrees 15 minutes 20 seconds West 3,045.94 feet along the boundary of said State Lease No. 21017 to a point having Coordinates of X = 2,416,873.67 and Y = 321,169.00; thence West 6,953.67 feet to the Northeast corner of State Lease No. 18441, also being the Southeast corner of State Lease No. 21344, having Coordinates of X = 2,409,920.00 and Y = 321,169.00; thence North 3,520.79 feet along the West boundary of said State Lease No. 21344 to its Northeast corner, also being a point on the boundary of State Lease No. 356, as amended, having Coordinates of X = 2,409,920.00 and Y = 324,689.79; thence along the boundary of said State Lease No. 356, the following courses: Northeasterly, Northwesterly and Northeasterly to a point on the boundary of said State Lease No. 21343; thence along the boundary of said State Lease No. 21343, the following courses and distances: Southeasterly approximately 4,742 feet to a point having Coordinates of X = 2,415,963.34 and Y = 333,140.00; and South 3,190.00 feet to the point of beginning, **LESS AND EXCEPT** all that portion of State Lease No. 356, as amended, that may lie within the above described tract, containing approximately **387 acres**, all as more particularly outlined on a plat on file in the Office of Mineral Resources, Department of Natural Resources. All bearings, distances and coordinates are based on Louisiana Coordinate System of 1927, (North or South Zone), where applicable.

NOTE: The above description of the Tract nominated for lease has been provided and corrected, where required, exclusively by the nomination party. Any mineral lease selected from this Tract and awarded by the Louisiana State Mineral and Energy Board shall be without warranty of any kind, either express, implied, or statutory, including, but not limited to, the implied warranties of merchantability and fitness for a particular purpose. Should the mineral lease awarded by the Louisiana State Mineral and Energy Board be subsequently modified, cancelled or abrogated due to the existence of conflicting leases, operating agreements, private claims or other future obligations or conditions which may affect all or any portion of the leased Tract, it shall not relieve the Lessee of the obligation to pay any bonus due thereon to the Louisiana State Mineral and Energy Board, nor shall the Louisiana State Mineral and Energy Board be obligated to refund any consideration paid by the Lessor prior to such

modification, cancellation, or abrogation, including, but not limited to, bonuses, rentals and royalties.

NOTE: The State of Louisiana does hereby reserve, and this lease shall be subject to, the imprescriptible right of surface use in the nature of a servitude in favor of the Department of Natural Resources, including its Offices and Commissions, for the sole purpose of implementing, constructing, servicing and maintaining approved coastal zone management and/or restoration projects. Utilization of any and all rights derived under this lease by the mineral lessee, its agents, successors or assigns, shall not interfere with nor hinder the reasonable surface use by the Department of Natural Resources, its Offices or Commissions, as herein above reserved.

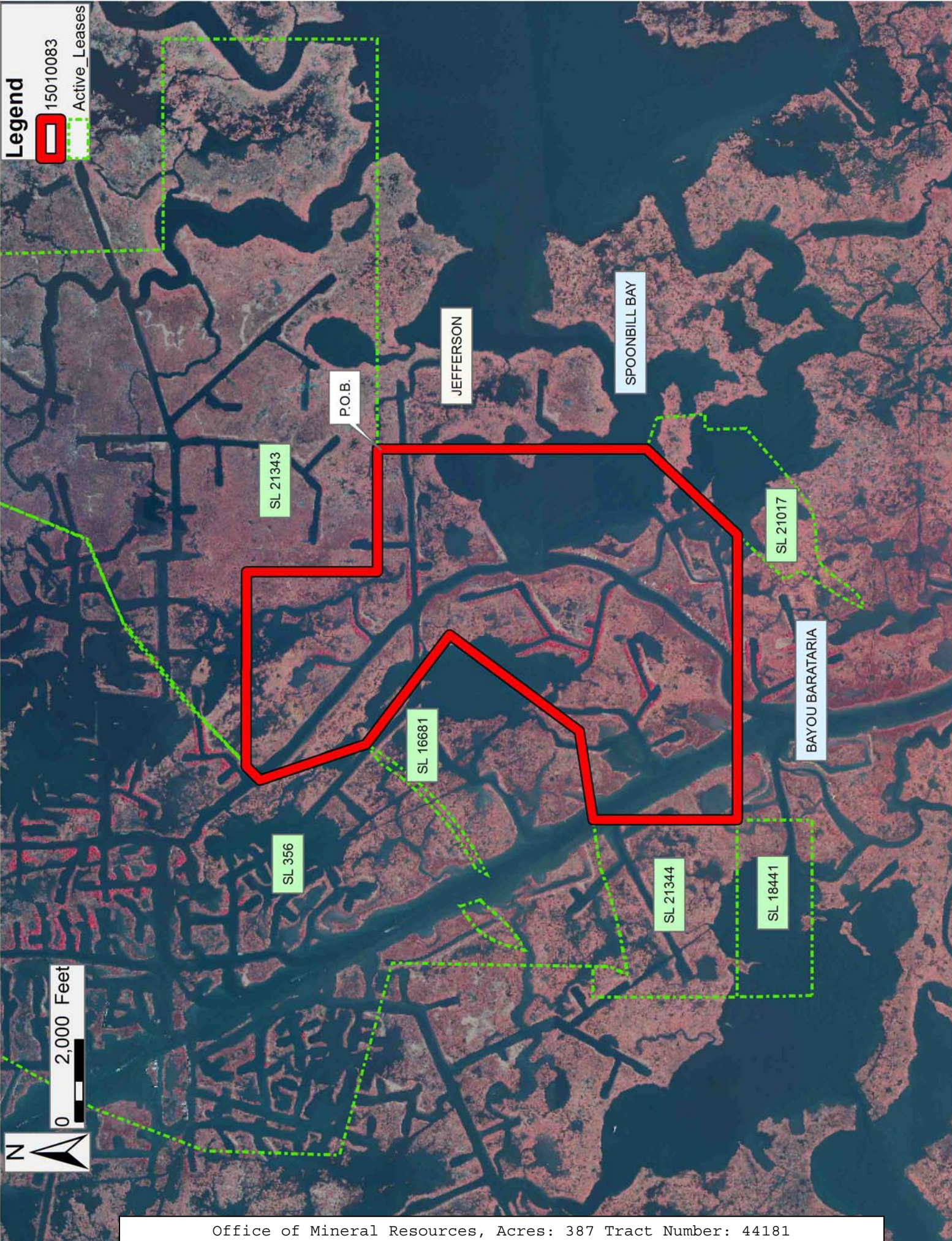
Applicant: THEOPHILUS OIL, GAS & LAND SERVICES, LLC

Bidder	Cash Payment	Price/Acre	Rental	Oil	Gas	Other

Legend

15010083

Active_Leases



TRACT 44182 - Portion of Blocks 30, and 35, Breton Sound Area, Plaquemines Parish, Louisiana

All of the lands now or formerly constituting the beds and bottoms of all water bodies of every nature and description as to which title is vested in the State of Louisiana, together with all islands arising therein and other lands formed by accretion or by reliction, where allowed by law, excepting tax adjudicated lands, and not presently under mineral lease on January 14, 2015, situated in Plaquemines Parish, Louisiana, and more particularly described as follows: Beginning at a point within Block 30, Breton Sound Area, having Coordinates of X = 2,669,164.78 and Y = 327,650.76; thence East 10,435.22 feet to a point on the East boundary of said Block 30, having Coordinates of X = 2,679,600.00 and Y = 327,650.76; thence South 945.76 feet along said East boundary to the most Westerly Northwest corner of State Lease No. 2000, as amended, having Coordinates of X = 2,679,600.00 and Y = 326,705.00; thence South 4,375.00 feet along the boundary of said State Lease No. 2000 to its Southwest corner, also being the Northwest corner of State Lease No. 1230, as amended, also being the Southeast corner of said Block 30 and the Northeast corner of Block 35, Breton Sound Area, having Coordinates of X = 2,679,600.00 and Y = 322,330.00; thence South 5,050.00 feet along the East boundary of said Block 35, also being the West boundary of said State Lease No. 1230 to its Southwest corner, having Coordinates of X = 2,679,600.00 and Y = 317,280.00; thence South 89 degrees 38 minutes 46 seconds West 10,435.42 feet to a point having Coordinates of X = 2,669,164.78 and Y = 317,215.54; thence North 10,435.22 feet to the point of beginning, containing approximately **2,492.14 acres**, all as more particularly outlined on a plat on file in the Office of Mineral Resources, Department of Natural Resources. All bearings, distances and coordinates are based on Louisiana Coordinate System of 1927, (North or South Zone), where applicable.

NOTE: The above description of the Tract nominated for lease has been provided and corrected, where required, exclusively by the nomination party. Any mineral lease selected from this Tract and awarded by the Louisiana State Mineral and Energy Board shall be without warranty of any kind, either express, implied, or statutory, including, but not limited to, the implied warranties of merchantability and fitness for a particular purpose. Should the mineral lease awarded by the Louisiana State Mineral and Energy Board be subsequently modified, cancelled or abrogated due to the existence of conflicting leases, operating agreements, private claims or other future obligations or conditions which may affect all or any portion of the leased Tract, it shall not relieve the Lessee of the obligation to pay any bonus due thereon to the Louisiana State Mineral and Energy Board, nor shall the Louisiana State Mineral and Energy Board be obligated to refund any consideration paid by the Lessor prior to such modification, cancellation, or abrogation, including, but not limited to, bonuses, rentals and royalties.

NOTE: The State of Louisiana does hereby reserve, and this lease shall be subject to, the imprescriptible right of surface use in the nature of a

servitude in favor of the Department of Natural Resources, including its Offices and Commissions, for the sole purpose of implementing, constructing, servicing and maintaining approved coastal zone management and/or restoration projects. Utilization of any and all rights derived under this lease by the mineral lessee, its agents, successors or assigns, shall not interfere with nor hinder the reasonable surface use by the Department of Natural Resources, its Offices or Commissions, as herein above reserved.

NOTE: It appears, according to our records, that a portion of this Tract is located within the restrictive safety fairway area as set out by the Corps of Engineers, U.S. Army and/or the restrictive anchorage area as set out by the U.S. Coast Guard.

NOTE: This tract is located in an area designated by the Louisiana Legislature or the Wildlife and Fisheries Commission as a Public Oyster Seed Ground, Reservation, or area of Calcasieu or Sabine Lake. Proposed projects occurring in these areas will be evaluated on a case by case basis by Louisiana Department of Wildlife & Fisheries. Modifications to proposed project features including, but not limited to, access routes, well sites, flowlines, and appurtenant structures maybe required by the Louisiana Department of Wildlife and Fisheries. In addition, compensatory mitigation will be required to offset unavoidable habitat impacts.

Applicant: THEOPHILUS OIL, GAS & LAND SERVICES, LLC

Bidder	Cash Payment	Price/Acre	Rental	Oil	Gas	Other



0 3,000 Feet

Legend

15010098
Active_Leases

PLAQUEMINES

BRETON SOUND AREA

GULF OF MEXICO

P.O.B.

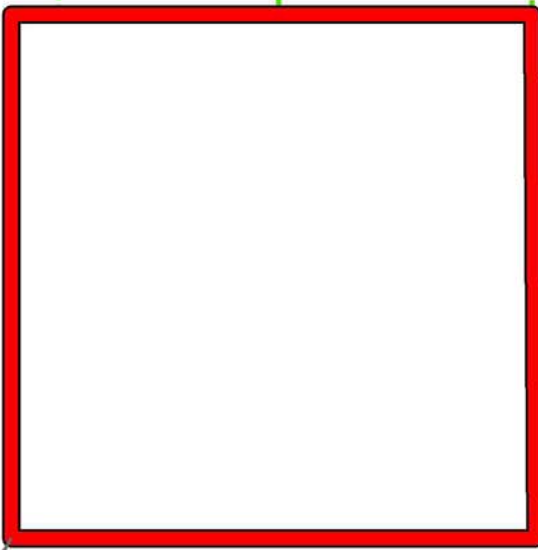
BS0030

BS0035

SL 2000

SL 1230

BS0036



TRACT 44183 - Portion of Blocks 30, 31, 34, and 35, Breton Sound Area, Plaquemines Parish, Louisiana

All of the lands now or formerly constituting the beds and bottoms of all water bodies of every nature and description as to which title is vested in the State of Louisiana, together with all islands arising therein and other lands formed by accretion or by reliction, where allowed by law, excepting tax adjudicated lands, and not presently under mineral lease on January 14, 2015, situated in Plaquemines Parish, Louisiana, and more particularly described as follows: Beginning at a point within Block 31, Breton Sound Area, having Coordinates of X = 2,658,729.56 and Y = 327,650.76; thence East 10,435.22 feet to a point within Block 30, Breton Sound Area, having Coordinates of X = 2,669,164.78 and Y = 327,650.76; thence South 10,435.22 feet to a point within Block 35, Breton Sound Area, having Coordinates of X = 2,669,164.78 and Y = 317,215.54; thence West 8,931.23 feet to a point within Block 34, Breton Sound Area, also being the Northeast corner of State Lease No. 17767, as amended, having Coordinates of X = 2,660,233.55 and Y = 317,215.54; thence West 1,483.55 feet along the Northern boundary of said State Lease No. 17767 to its Northwest corner, also being the Northeast corner of State Lease No. 14217, to a point having Coordinates of X = 2,658,750.00 and Y = 317,215.54; thence West 20.44 feet to a point having Coordinates of X = 2,658,729.56 and Y = 317,215.54; thence North 10,435.22 feet to the point of beginning, containing approximately **2,499.86 acres**, all as more particularly outlined on a plat on file in the Office of Mineral Resources, Department of Natural Resources. All bearings, distances and coordinates are based on Louisiana Coordinate System of 1927, (North or South Zone), where applicable.

NOTE: The above description of the Tract nominated for lease has been provided and corrected, where required, exclusively by the nomination party. Any mineral lease selected from this Tract and awarded by the Louisiana State Mineral and Energy Board shall be without warranty of any kind, either express, implied, or statutory, including, but not limited to, the implied warranties of merchantability and fitness for a particular purpose. Should the mineral lease awarded by the Louisiana State Mineral and Energy Board be subsequently modified, cancelled or abrogated due to the existence of conflicting leases, operating agreements, private claims or other future obligations or conditions which may affect all or any portion of the leased Tract, it shall not relieve the Lessee of the obligation to pay any bonus due thereon to the Louisiana State Mineral and Energy Board, nor shall the Louisiana State Mineral and Energy Board be obligated to refund any consideration paid by the Lessor prior to such modification, cancellation, or abrogation, including, but not limited to, bonuses, rentals and royalties.

NOTE: The State of Louisiana does hereby reserve, and this lease shall be subject to, the imprescriptible right of surface use in the nature of a servitude in favor of the Department of Natural Resources, including its Offices and Commissions, for the sole purpose of implementing,

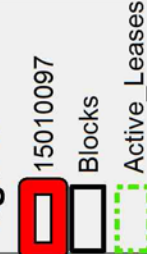
constructing, servicing and maintaining approved coastal zone management and/or restoration projects. Utilization of any and all rights derived under this lease by the mineral lessee, its agents, successors or assigns, shall not interfere with nor hinder the reasonable surface use by the Department of Natural Resources, its Offices or Commissions, as herein above reserved.

NOTE: It appears, according to our records, that a portion of this Tract is located within the restrictive safety fairway area as set out by the Corps of Engineers, U.S. Army and/or the restrictive anchorage area as set out by the U.S. Coast Guard.

NOTE: This tract is located in an area designated by the Louisiana Legislature or the Wildlife and Fisheries Commission as a Public Oyster Seed Ground, Reservation, or area of Calcasieu or Sabine Lake. Proposed projects occurring in these areas will be evaluated on a case by case basis by Louisiana Department of Wildlife & Fisheries. Modifications to proposed project features including, but not limited to, access routes, well sites, flowlines, and appurtenant structures maybe required by the Louisiana Department of Wildlife and Fisheries. In addition, compensatory mitigation will be required to offset unavoidable habitat impacts.

Applicant: THEOPHILUS OIL, GAS & LAND SERVICES, LLC

Bidder	Cash Payment	Price/Acre	Rental	Oil	Gas	Other



PLAQUEMINES

BRETON SOUND AREA

BS0030

BS0035

GULF OF MEXICO

P.O.B.

BS0031

BS0034

SL 17767

SL 14217

TRACT 44184 - Portion of Blocks 32, and 33, Breton Sound Area, Plaquemines Parish, Louisiana

All of the lands now or formerly constituting the beds and bottoms of all water bodies of every nature and description as to which title is vested in the State of Louisiana, together with all islands arising therein and other lands formed by accretion or by reliction, where allowed by law, excepting tax adjudicated lands, and not presently under mineral lease on January 14, 2015, situated in Plaquemines Parish, Louisiana, and more particularly described as follows: Beginning at a point within Block 32, Breton Sound Area, also being a point on the Southern boundary of State Lease No. 1227, as amended, having Coordinates of X = 2,637,859.12 and Y = 327,733.38; thence along the boundary of said State Lease No. 1227 the following courses and distances: South 51 degrees 38 minutes 28 seconds East 853.33 feet to a point having Coordinates of X = 2,638,528.25 and Y = 327,203.82, North 79 degrees 45 minutes 24 seconds East 3,665.48 feet to a point having Coordinates of X = 2,642,135.31 and Y = 327,855.65, South 18 degrees 56 minutes 08 seconds East 1,943.31 feet to a point having Coordinates of X = 2,642,765.92 and Y = 326,017.50, East 3,834.08 feet to a point having Coordinates of X = 2,646,600.00 and Y = 326,017.50 and North 1,633.26 feet to a point having Coordinates of X = 2,646,600.00 and Y = 327,650.76; thence East 1,694.34 feet to a point having Coordinates of X = 2,648,294.34 and Y = 327,650.76; thence South 10,435.22 feet to a point having Coordinates of X = 2,648,294.34 and Y = 317,215.54; thence West 9,178.34 feet to a point on the boundary of State Lease No. 18078, having Coordinates of X = 2,639,116.00 and Y = 317,215.54; thence along the boundary of said State Lease No 18078, the following courses and distances: North 902.46 feet to a point having Coordinates of X = 2,639,116.00 and Y = 318,118.00, North 39 degrees 52 minutes 03 seconds West 844.35 feet to a point having Coordinates of X = 2,638,574.76 and Y = 318,766.06 and South 50 degrees 07 minutes 57 seconds West 932.40 feet to a point having Coordinates of X = 2,637,859.12 and Y = 318,168.38; thence North 9,565.00 feet to the point of beginning, containing approximately **2,297.14 acres**, all as more particularly outlined on a plat on file in the Office of Mineral Resources, Department of Natural Resources. All bearings, distances and coordinates are based on Louisiana Coordinate System of 1927, (North or South Zone), where applicable.

NOTE: The above description of the Tract nominated for lease has been provided and corrected, where required, exclusively by the nomination party. Any mineral lease selected from this Tract and awarded by the Louisiana State Mineral and Energy Board shall be without warranty of any kind, either express, implied, or statutory, including, but not limited to, the implied warranties of merchantability and fitness for a particular purpose. Should the mineral lease awarded by the Louisiana State Mineral and Energy Board be subsequently modified, cancelled or abrogated due to the existence of conflicting leases, operating agreements, private claims or other future obligations or conditions which may affect all or any portion of the leased Tract, it shall not relieve the Lessee of the obligation to pay any bonus due thereon to the Louisiana State Mineral and

Energy Board, nor shall the Louisiana State Mineral and Energy Board be obligated to refund any consideration paid by the Lessor prior to such modification, cancellation, or abrogation, including, but not limited to, bonuses, rentals and royalties.

NOTE: The State of Louisiana does hereby reserve, and this lease shall be subject to, the imprescriptible right of surface use in the nature of a servitude in favor of the Department of Natural Resources, including its Offices and Commissions, for the sole purpose of implementing, constructing, servicing and maintaining approved coastal zone management and/or restoration projects. Utilization of any and all rights derived under this lease by the mineral lessee, its agents, successors or assigns, shall not interfere with nor hinder the reasonable surface use by the Department of Natural Resources, its Offices or Commissions, as herein above reserved.

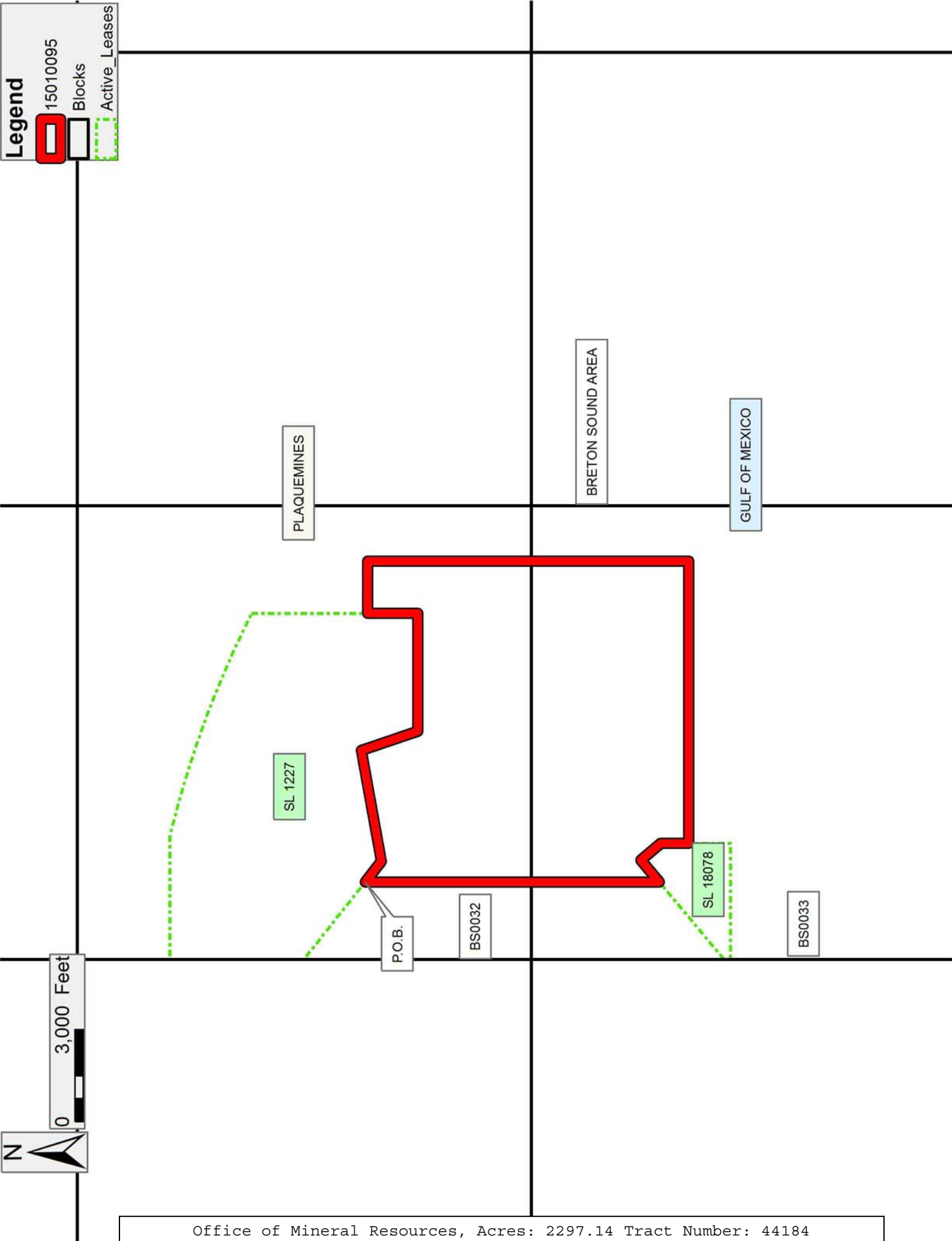
NOTE: This tract is located in an area designated by the Louisiana Legislature or the Wildlife and Fisheries Commission as a Public Oyster Seed Ground, Reservation, or area of Calcasieu or Sabine Lake. Proposed projects occurring in these areas will be evaluated on a case by case basis by Louisiana Department of Wildlife & Fisheries. Modifications to proposed project features including, but not limited to, access routes, well sites, flowlines, and appurtenant structures maybe required by the Louisiana Department of Wildlife and Fisheries. In addition, compensatory mitigation will be required to offset unavoidable habitat impacts.

Applicant: THEOPHILUS OIL, GAS & LAND SERVICES, LLC

Bidder	Cash Payment	Price/Acre	Rental	Oil	Gas	Other

Legend

- 15010095 (Red outline)
- Blocks (Black outline)
- Active_Leases (Green dashed outline)



0 3,000 Feet