

TRACT 44165 - Portion of Block 22, Breton Sound Area, Plaquemines Parish, Louisiana

All of the lands now or formerly constituting the beds and bottoms of all water bodies of every nature and description as to which title is vested in the State of Louisiana, together with all islands arising therein and other lands formed by accretion or by reliction, where allowed by law, excepting tax adjudicated lands, and not presently under mineral lease on January 14, 2015, situated in Plaquemines Parish, Louisiana, and more particularly described as follows: Beginning at a point within Block 22, Breton Sound Area, also being the most Northerly Northeast corner of State Lease No. 2326, as amended, also being a point on the Southern boundary of State Lease No. 8191, as amended, having Coordinates of X = 2,718,933.33 and Y = 351,830.00; thence East 4,916.67 feet along the North line of said Block 22 to its Northeast corner, also being the Southeast corner of said State Lease No. 8191, having Coordinates of X = 2,723,850.00 and Y = 351,830.00; thence South 7,375.00 feet along said East boundary of said Block 22 to a point on the boundary of said State Lease No. 2326, having Coordinates of X = 2,723,850.00 and Y = 344,455.00; thence along the boundary of said State Lease No. 2321 the following courses and distances: West 4,916.67 feet to a point having Coordinates of X = 2,718,933.33 and Y = 344,455.00, and North 7,375.00 feet to the point of beginning, containing approximately **832.43 acres**, all as more particularly outlined on a plat on file in the Office of Mineral Resources, Department of Natural Resources. All bearings, distances and coordinates are based on Louisiana Coordinate System of 1927, (North or South Zone), where applicable.

NOTE: The above description of the Tract nominated for lease has been provided and corrected, where required, exclusively by the nomination party. Any mineral lease selected from this Tract and awarded by the Louisiana State Mineral and Energy Board shall be without warranty of any kind, either express, implied, or statutory, including, but not limited to, the implied warranties of merchantability and fitness for a particular purpose. Should the mineral lease awarded by the Louisiana State Mineral and Energy Board be subsequently modified, cancelled or abrogated due to the existence of conflicting leases, operating agreements, private claims or other future obligations or conditions which may affect all or any portion of the leased Tract, it shall not relieve the Lessee of the obligation to pay any bonus due thereon to the Louisiana State Mineral and Energy Board, nor shall the Louisiana State Mineral and Energy Board be obligated to refund any consideration paid by the Lessor prior to such modification, cancellation, or abrogation, including, but not limited to, bonuses, rentals and royalties.

NOTE: The State of Louisiana does hereby reserve, and this lease shall be subject to, the imprescriptible right of surface use in the nature of a servitude in favor of the Department of Natural Resources, including its Offices and Commissions, for the sole purpose of implementing, constructing, servicing and maintaining approved coastal zone management and/or restoration projects. Utilization of any and all rights derived

under this lease by the mineral lessee, its agents, successors or assigns, shall not interfere with nor hinder the reasonable surface use by the Department of Natural Resources, its Offices or Commissions, as herein above reserved.

Applicant: THEOPHILUS OIL, GAS & LAND SERVICES, LLC

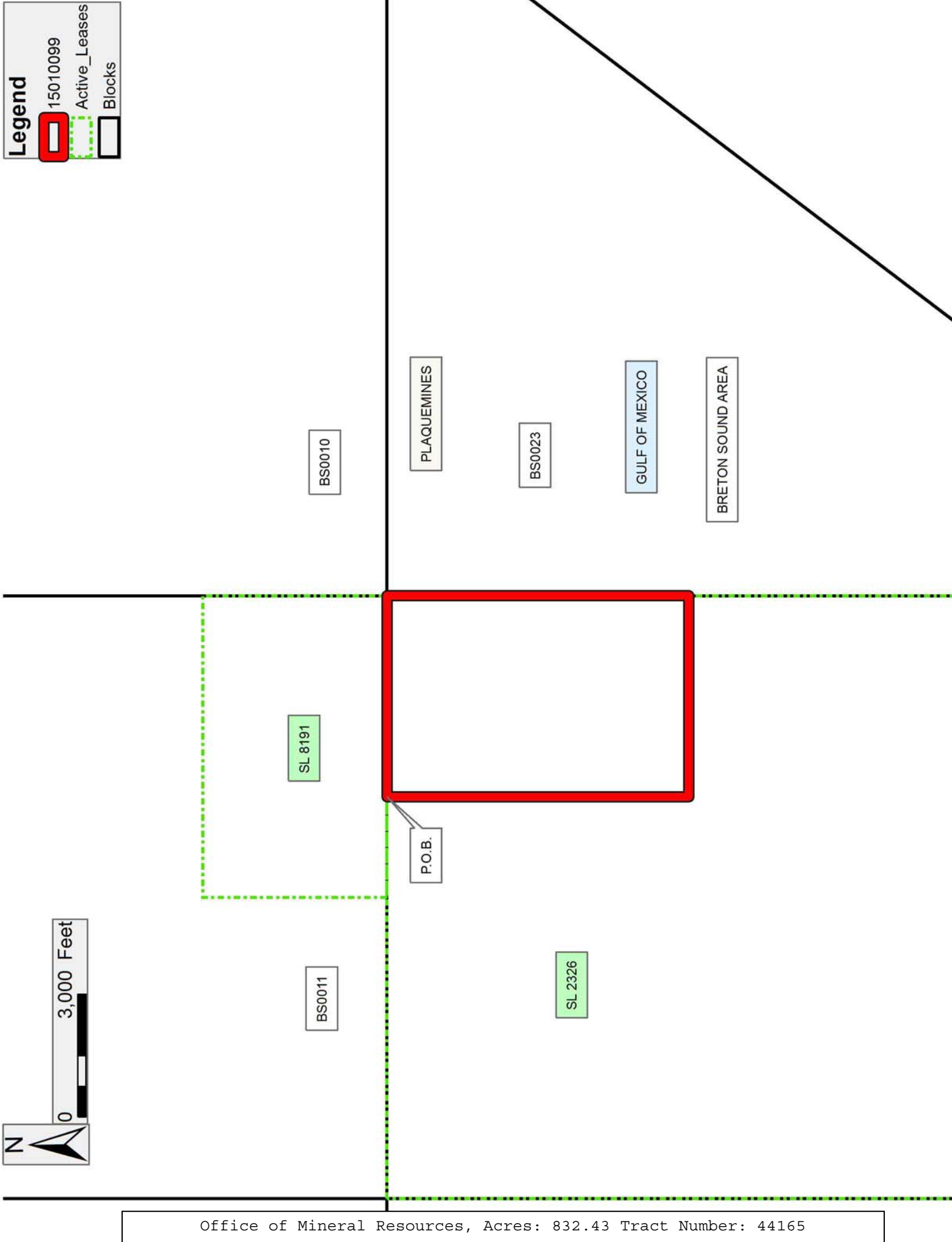
Bidder	Cash Payment	Price/ Acre	Rental	Oil	Gas	Other

Legend

15010099

Active_Leases

Blocks



TRACT 44166 - Assumption and St. Mary Parishes, Louisiana

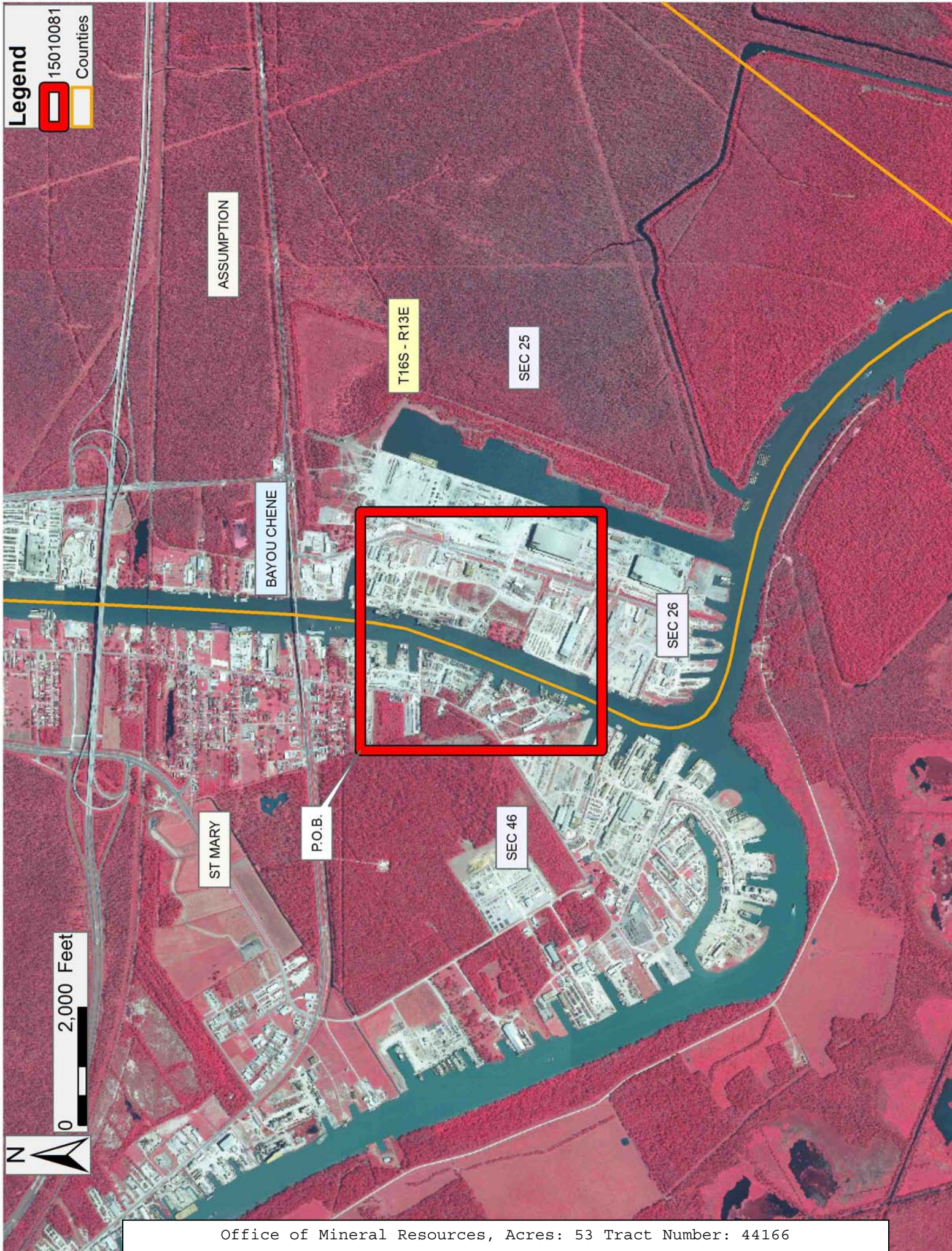
All of the lands now or formerly constituting the beds and bottoms of all water bodies of every nature and description as to which title is vested in the State of Louisiana, together with all islands arising therein and other lands formed by accretion or by reliction, where allowed by law, excepting tax adjudicated lands, and not presently under mineral lease on January 14, 2015, situated in Assumption and St. Mary Parishes, Louisiana, and more particularly described as follows: Beginning at a point having Coordinates of X = 2,072,003.34 and Y = 360,700.00; thence East 4,054.69 feet to a point having Coordinates of X = 2,076,058.03 and Y = 360,700.00; thence South 4,100.00 feet to a point having Coordinates of X = 2,076,058.03 and Y = 356,600.00; thence West 4,054.69 feet to a point having Coordinates of X = 2,072,003.34 and Y = 356,600.00; thence North 4,100.00 feet to the point of beginning, containing approximately **53 acres**, all as more particularly outlined on a plat on file in the Office of Mineral Resources, Department of Natural Resources. All bearings, distances and coordinates are based on Louisiana Coordinate System of 1927, (North or South Zone), where applicable.

NOTE: The above description of the Tract nominated for lease has been provided and corrected, where required, exclusively by the nomination party. Any mineral lease selected from this Tract and awarded by the Louisiana State Mineral and Energy Board shall be without warranty of any kind, either express, implied, or statutory, including, but not limited to, the implied warranties of merchantability and fitness for a particular purpose. Should the mineral lease awarded by the Louisiana State Mineral and Energy Board be subsequently modified, cancelled or abrogated due to the existence of conflicting leases, operating agreements, private claims or other future obligations or conditions which may affect all or any portion of the leased Tract, it shall not relieve the Lessee of the obligation to pay any bonus due thereon to the Louisiana State Mineral and Energy Board, nor shall the Louisiana State Mineral and Energy Board be obligated to refund any consideration paid by the Lessor prior to such modification, cancellation, or abrogation, including, but not limited to, bonuses, rentals and royalties.

NOTE: The State of Louisiana does hereby reserve, and this lease shall be subject to, the imprescriptible right of surface use in the nature of a servitude in favor of the Department of Natural Resources, including its Offices and Commissions, for the sole purpose of implementing, constructing, servicing and maintaining approved coastal zone management and/or restoration projects. Utilization of any and all rights derived under this lease by the mineral lessee, its agents, successors or assigns, shall not interfere with nor hinder the reasonable surface use by the Department of Natural Resources, its Offices or Commissions, as herein above reserved.

Applicant: THEOPHILUS OIL, GAS & LAND SERVICES, LLC

Bidder	Cash Payment	Price/ Acre	Rental	Oil	Gas	Other



TRACT 44167 - Portion of Blocks 18, and 19, Breton Sound Area, Plaquemines Parish, Louisiana

All of the lands now or formerly constituting the beds and bottoms of all water bodies of every nature and description as to which title is vested in the State of Louisiana, together with all islands arising therein and other lands formed by accretion or by reliction, where allowed by law, excepting tax adjudicated lands, and not presently under mineral lease on January 14, 2015, situated in Plaquemines Parish, Louisiana, and more particularly described as follows: Beginning at a point on the Northern boundary of Block 18, Breton Sound Area, having Coordinates of X = 2,657,475.00 and Y = 351,830.00; thence East 7,375.00 feet along said Northern boundary to its Northeast corner, having Coordinates of X = 2,664,850.00 and Y = 351,830.00; thence South 2,568.00 feet, along the East boundary of said Block 18 to a point on the Northern boundary of State Lease No. 21246, having Coordinates of X = 2,664,850.00 and Y = 349,262.00; thence along the boundary of said State Lease No. 21246 the following courses and distances: West 2,198.00 feet to a point having Coordinates of X = 2,662,652.00 and Y = 349,262.00, South 4,807.00 feet to a point having Coordinates of X = 2,662,652.00 and Y = 344,455.00, and East 2,198.00 feet to its Southeast corner, also being the Southwest corner of State Lease No. 20433, also being the Northwest corner of the Northern portion of State Lease No. 16610, as amended, having Coordinates of X = 2,664,850.00 and Y = 344,455.00; thence along the boundary of said State Lease No. 16610 the following courses and distances: South 2,345.00 feet to a point having Coordinates of X = 2,664,850.00 and Y = 342,110.00, East 1,278.88 feet to a point having Coordinates of X = 2,666,128.88 and Y = 342,110.00, also being a point within Block 19, Breton Sound Area, and South 741.88 feet to a point on the Western boundary of State Lease No. 16443, as amended, having Coordinates of X = 2,666,128.88 and Y = 341,368.12; thence along the boundary of said State Lease No. 16443 the following courses and distances: South 915.43 feet to a point having Coordinates of X = 2,666,128.88 and Y = 340,452.69, South 06 degrees 53 minutes 21 seconds West 704.12 feet to a point having Coordinates of X = 2,666,044.42 and Y = 339,753.65, South 02 degrees 27 minutes 12 seconds East 659.24 feet to a point having Coordinates of X = 2,666,072.64 and Y = 339,095.02 and South 38 degrees 35 minutes 55 seconds East 1,291.09 feet to a point having Coordinates of X = 2,666,878.10 and Y = 338,085.98; thence West 9,403.10 feet to a point having Coordinates of X = 2,657,475.00 and Y = 338,085.98, thence North 13,744.02 feet to the point of beginning, **LESS AND EXCEPT** all that portion of State Lease No. 16442, as amended that lies within the above described tract, being more fully described as follows: Beginning at a point having Coordinates of X = 2,659,779.55 and Y = 346,739.14; thence South 88 degrees 16 minutes 45 seconds East 1,136.96 feet to a point having Coordinates of X = 2,660,916.00 and Y = 346,705.00; thence South 26 degrees 26 minutes 51 seconds East 217.79 feet to a point having Coordinates of X = 2,661,013.00 and Y = 346,510.00; thence South 14 degrees 29 minutes 23 seconds East 643.47 feet to a point having Coordinates of X = 2,661,174.00 and Y = 345,887.00; thence South 04 degrees 18 minutes 00 seconds East 400.13 feet

to a point having Coordinates of X = 2,661,204.00 and Y = 345,488.00; thence South 03 degrees 43 minutes 08 seconds West 200.42 feet to a point having Coordinates of X = 2,661,191.00 and Y = 345,288.00; thence South 13 degrees 04 minutes 51 seconds West 349.06 feet to a point having Coordinates of X = 2,661,112.00 and Y = 344,948.00; thence South 25 degrees 05 minutes 47 seconds West 174.47 feet to a point having Coordinates of X = 2,661,038.00 and Y = 344,790.00; thence South 38 degrees 08 minutes 49 seconds West 314.08 feet to a point having Coordinates of X = 2,660,844.00 and Y = 344,543.00; thence South 52 degrees 32 minutes 36 seconds West 144.70 feet to a point having Coordinates of X = 2,660,729.14 and Y = 344,455.00; thence West 2,553.59 feet to a point having Coordinates of X = 2,658,175.55 and Y = 344,455.00; thence North 07 degrees 45 minutes 26 seconds East 40.37 feet to a point having Coordinates of X = 2,658,181.00 and Y = 344,495.00; thence North 20 degrees 25 minutes 34 seconds East 309.46 feet to a point having Coordinates of X = 2,658,289.00 and Y = 344,785.00; thence North 16 degrees 34 minutes 26 seconds East 175.28 feet to a point having Coordinates of X = 2,658,339.00 and Y = 344,953.00; thence North 13 degrees 50 minutes 27 seconds East 71.06 feet to a point having Coordinates of X = 2,658,356.00 and Y = 345,022.00; thence North 19 degrees 54 minutes 59 seconds East 73.39 feet to a point having Coordinates of X = 2,658,381.00 and Y = 345,091.00; thence North 03 degrees 18 minutes 07 seconds West 52.09 feet to a point having Coordinates of X = 2,658,378.00 and Y = 345,143.00; thence North 12 degrees 31 minutes 44 seconds West 36.88 feet to a point having Coordinates of X = 2,658,370.00 and Y = 345,179.00; thence North 34 degrees 05 minutes 42 seconds West 78.49 feet to a point having Coordinates of X = 2,658,326.00 and Y = 345,244.00; thence North 25 degrees 12 minutes 04 seconds West 18,079 feet to a point having Coordinates of X = 2,658,318.00 and Y = 345,261.00; thence North 27 degrees 53 minutes 50 seconds West 38.47 feet to a point having Coordinates of X = 2,658,300.00 and Y = 345,295.00; thence North 30 degrees 34 minutes 45 seconds West 25.55 feet to a point having Coordinates of X = 2,658,287.00 and Y = 345,317.00; thence North 32 degrees 44 minutes 07 seconds West 49.93 feet to a point having Coordinates of X = 2,658,260.00 and Y = 345,359.00; thence North 39 degrees 12 minutes 03 seconds West 727.80 feet to a point having Coordinates of X = 2,657,800.00 and Y = 345,923.00; thence North 32 degrees 21 minutes 48 seconds West 121.78 feet to a point having Coordinates of X = 2,657,734.81 and Y = 346,025.86; and North 70 degrees 46 minutes 10 seconds East 2,165.57 feet to its point of beginning, and **LESS AND EXCEPT** all that portion of State Lease No. 16543, as amended, that lies within the above described tract, being more fully described as follows: Beginning at a point having Coordinates of X = 2,658,175.55 and Y = 344,455.00; thence South 07 degrees 45 minutes 26 seconds West 285.61 feet to a point having Coordinates of X = 2,658,137.00 and Y = 344,172.00; thence South 18 degrees 20 minutes 59 seconds East 212.82 feet to a point having Coordinates of X = 2,658,204.00 and Y = 343,970.00; thence South 55 degrees 35 minutes 50 seconds East 111.50 feet to a point having

Coordinates of X = 2,658,296.00 and Y = 343,907.00; thence South 84
degrees 07 minutes 57 seconds East 254.33 feet to a point having
Coordinates of X = 2,658,549.00 and Y = 343,881.00; thence North 80
degrees 08 minutes 03 seconds East 560.29 feet to a point having
Coordinates of X = 2,659,101.00 and Y = 343,977.00; thence North 70
degrees 40 minutes 12 seconds East 404.82 feet to a point having
Coordinates of X = 2,659,483.00 and Y = 344,111.00; thence North 74
degrees 52 minutes 07 seconds East 406.08 feet to a point having
Coordinates of X = 2,659,875.00 and Y = 344,217.00; thence North 79
degrees 45 minutes 05 seconds East 455.26 feet to a point having
Coordinates of X = 2,660,323.00 and Y = 344,298.00; thence North 72
degrees 50 minutes 17 seconds East 284.68 feet to a point having
Coordinates of X = 2,660,595.00 and Y = 344,382.00; thence North 62
degrees 09 minutes 57 seconds East 141.35 feet to a point having
Coordinates of X = 2,660,720.00 and Y = 344,448.00; thence North 52
degrees 32 minutes 36 seconds East 11.51 feet to a point having
Coordinates of X = 2,660,729.14 and Y = 344,455.00; and West 2,553.59 feet
to its point of beginning, and **LESS AND EXCEPT** all that portion of State
Lease No. 16594, as amended that lies within the above described tract,
being more fully described as follows: Beginning at a point having
Coordinates of X = 2,659,779.55 and Y = 346,739.14; thence North 85
degrees 10 minutes 31 seconds West 604.69 feet to a point having
Coordinates of X = 2,659,177.00 and Y = 346,790.00; thence South 89
degrees 06 minutes 36 seconds West 708.09 feet to a point having
Coordinates of X = 2,658,469.00 and Y = 346,779.00; thence South 82
degrees 09 minutes 17 seconds West 739.93 feet to a point having
Coordinates of X = 2,657,736.00 and Y = 346,678.00; thence South 31
degrees 17 minutes 35 seconds West 119.36 feet to a point having
Coordinates of X = 2,657,674.00 and Y = 346,576.00; thence South 18
degrees 26 minutes 06 seconds West 63.25 feet to a point having
Coordinates of X = 2,657,654.00 and Y = 346,516.00; thence South 07
degrees 41 minutes 02 seconds West 127.14 feet to a point having
Coordinates of X = 2,657,637.00 and Y = 346,390.00; thence South 02
degrees 34 minutes 59 seconds East 133.14 feet to a point having
Coordinates of X = 2,657,643.00 and Y = 346,257.00; thence South 11
degrees 18 minutes 36 seconds East 66.29 feet to a point having
Coordinates of X = 2,657,656.00 and Y = 346,192.00; thence South 19
degrees 50 minutes 27 seconds East 103.12 feet to a point having
Coordinates of X = 2,657,691.00 and Y = 346,095.00; thence South 32
degrees 21 minutes 48 seconds East 81.85 feet to a point having
Coordinates of X = 2,657,734.81 and Y = 346,025.86, said point also being
on the Southern boundary of said State Lease No. 16594; and North 70
degrees 46 minutes 10 seconds East 2,165.57 feet to the point of
beginning; the nominated tract containing approximately **2,026.66 acres**,
all as more particularly outlined on a plat on file in the Office of
Mineral Resources, Department of Natural Resources. All bearings,
distances and coordinates are based on Louisiana Coordinate System of
1927, (North or South Zone), where applicable.

NOTE: The above description of the Tract nominated for lease has been provided and corrected, where required, exclusively by the nomination party. Any mineral lease selected from this Tract and awarded by the Louisiana State Mineral and Energy Board shall be without warranty of any kind, either express, implied, or statutory, including, but not limited to, the implied warranties of merchantability and fitness for a particular purpose. Should the mineral lease awarded by the Louisiana State Mineral and Energy Board be subsequently modified, cancelled or abrogated due to the existence of conflicting leases, operating agreements, private claims or other future obligations or conditions which may affect all or any portion of the leased Tract, it shall not relieve the Lessee of the obligation to pay any bonus due thereon to the Louisiana State Mineral and Energy Board, nor shall the Louisiana State Mineral and Energy Board be obligated to refund any consideration paid by the Lessor prior to such modification, cancellation, or abrogation, including, but not limited to, bonuses, rentals and royalties.

NOTE: The State of Louisiana does hereby reserve, and this lease shall be subject to, the imprescriptible right of surface use in the nature of a servitude in favor of the Department of Natural Resources, including its Offices and Commissions, for the sole purpose of implementing, constructing, servicing and maintaining approved coastal zone management and/or restoration projects. Utilization of any and all rights derived under this lease by the mineral lessee, its agents, successors or assigns, shall not interfere with nor hinder the reasonable surface use by the Department of Natural Resources, its Offices or Commissions, as herein above reserved.

NOTE: It appears, according to our records, that a portion of this Tract is located within the restrictive safety fairway area as set out by the Corps of Engineers, U.S. Army and/or the restrictive anchorage area as set out by the U.S. Coast Guard.

NOTE: This tract is located in an area designated by the Louisiana Legislature or the Wildlife and Fisheries Commission as a Public Oyster Seed Ground, Reservation, or area of Calcasieu or Sabine Lake. Proposed projects occurring in these areas will be evaluated on a case by case basis by Louisiana Department of Wildlife & Fisheries. Modifications to proposed project features including, but not limited to, access routes, well sites, flowlines, and appurtenant structures maybe required by the Louisiana Department of Wildlife and Fisheries. In addition, compensatory mitigation will be required to offset unavoidable habitat impacts.


Applicant: THEOPHILUS OIL, GAS & LAND SERVICES, LLC


Bidder	Cash Payment	Price/ Acre	Rental	Oil	Gas	Other




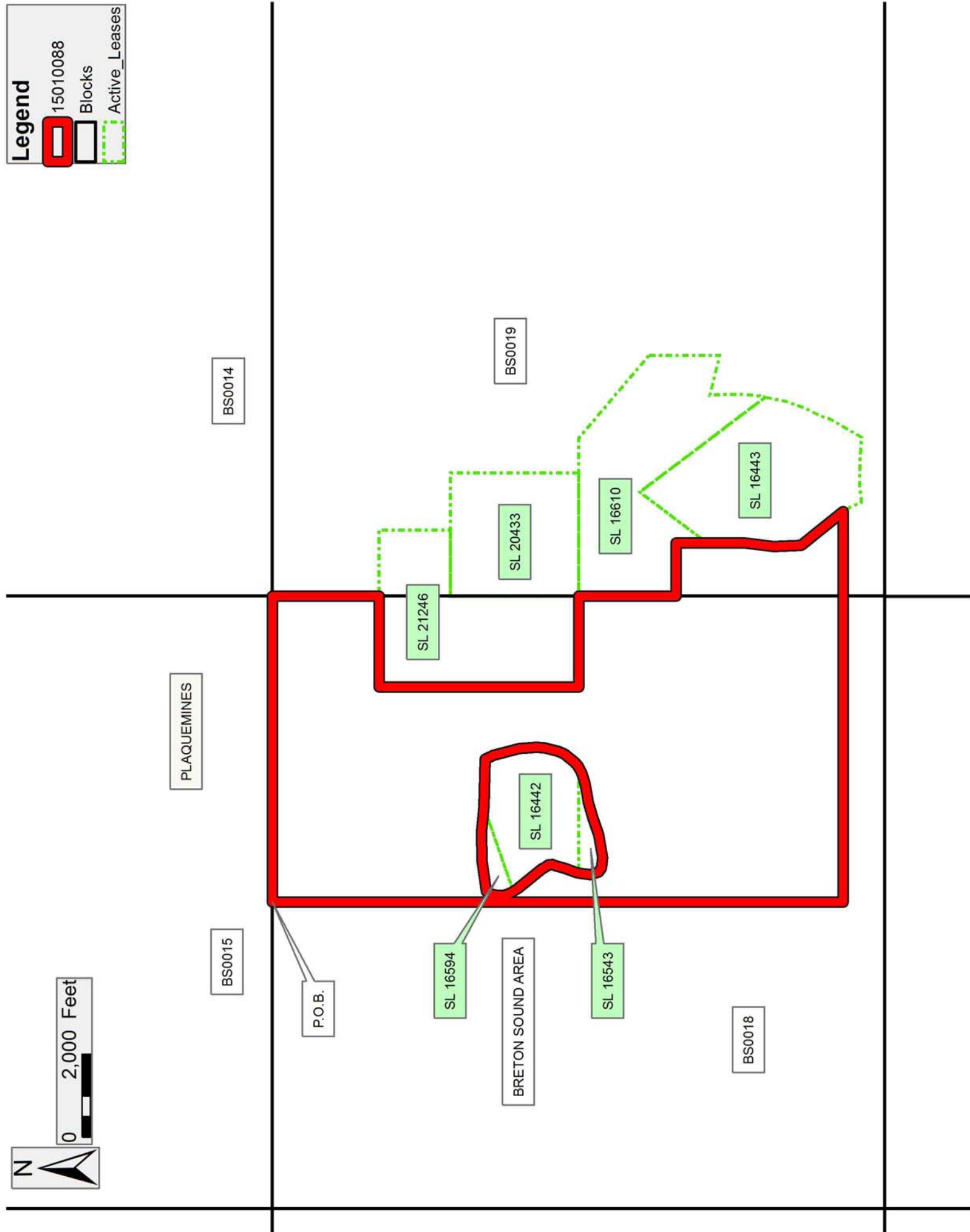
0 2,000 Feet

Legend

 15010088

 Blocks

 Active_Leases



TRACT 44168 - Portion of Block 19, Breton Sound Area, Plaquemines Parish, Louisiana

All of the lands now or formerly constituting the beds and bottoms of all water bodies of every nature and description as to which title is vested in the State of Louisiana, together with all islands arising therein and other lands formed by accretion or by reliction, where allowed by law, excepting tax adjudicated lands, and not presently under mineral lease on January 14, 2015, situated in Plaquemines Parish, Louisiana, and more particularly described as follows: Beginning at the Northwest corner of Block 19, Breton Sound Area, having Coordinates of X = 2,664,850.00 and Y = 351,830.00; thence East 7,375.00 feet along the North line of said Block 19 to a point having Coordinates of X = 2,672,225.00 and Y = 351,830.00; thence South 13,744.02 feet to a point having Coordinates of X = 2,672,225.00 and Y = 338,085.98; thence West 2,958.38 feet to a point on the Eastern boundary of the Southern portion of State Lease No. 16610, as amended, having Coordinates of X = 2,669,266.62 and Y = 338,085.98; thence along the boundary of said State Lease No. 16610, the following courses and distances: North 25 degrees 14 minutes 30 seconds West 191.76 feet to a point having Coordinates of X = 2,669,184.85 and Y = 338,259.43, North 23 degrees 57 minutes 00 seconds West 97.72 feet to a point having Coordinates of X = 2,669,145.18 and Y = 338,348.74, North 13 degrees 39 minutes 34 seconds West 75.59 feet to a point having Coordinates of X = 2,669,127.33 and Y = 338,422.19, North 02 degrees 27 minutes 15 seconds East 5.61 feet to a point having Coordinates of X = 2,669,127.57 and Y = 338,427.79 and North 02 degrees 30 minutes 07 seconds East 40.09 feet to a point on the boundary of State Lease No. 16443, as amended, having Coordinates of X = 2,669,129.32 and Y = 338,467.84; thence along the boundary of said State Lease No. 16443 the following courses and distances: North 11 degrees 53 minutes 25 seconds East 38.54 feet to a point having Coordinates of X = 2,669,137.26 and Y = 338,505.55, North 23 degrees 22 minutes 02 seconds East 235.29 feet to a point having Coordinates of X = 2,669,230.58 and Y = 338,721.54, North 27 degrees 32 minutes 15 seconds East 310.93 feet to a point having Coordinates of X = 2,669,374.33 and Y = 338,997.24, North 18 degrees 46 minutes 53 seconds East 503.86 feet to a point having Coordinates of X = 2,669,536.55 and Y = 339,474.27, and North 11 degrees 54 minutes 01 seconds East 495.33 feet to a point on the boundary of the Northern portion of said State Lease No. 16610 having Coordinates of X = 2,669,638.69 and Y = 339,958.95; thence along said boundary of said State Lease No. 16610 the following courses and distances: North 11 degrees 53 minutes 49 seconds East 140.67 feet to a point having Coordinates of X = 2,669,667.69 and Y = 340,096.60, North 06 degrees 34 minutes 02 seconds East 354.64 feet to a point having Coordinates of X = 2,669,708.25 and Y = 340,448.91, North 00 degrees 44 minutes 11 seconds East 487.86 feet to a point having Coordinates of X = 2,669,714.52 and Y = 340,936.73, North 05 degrees 42 minutes 57 seconds West 357.95 feet to a point having Coordinates of X = 2,669,678.87 and Y = 341,292.90, South 76 degrees 14 minutes 07 seconds East 999.85 feet to a point having Coordinates of X = 2,670,650.00 and Y = 341,055.00, North 1,700.00 feet to a point having Coordinates of X = 2,670,650.00 and Y =

342,755.00, North 49 degrees 38 minutes 08 seconds West 2,624.88 feet to a point having Coordinates of X = 2,668,650.00 and Y = 344,455.00, and West 832.00 feet to a point on the boundary of State Lease No. 20433, having Coordinates of X = 2,667,818.00 and Y = 344,455.00; thence along the boundary of said State Lease No. 20433, the following courses and distances: North 3,079.00 feet to a point having Coordinates of X = 2,667,818.00 and Y = 347,534.00, and West 1,376.00 feet to a point on the boundary of State Lease No. 21246 having Coordinates of X = 2,666,442.00 and Y = 347,534.00; thence along the boundary of said State Lease No. 21246, the following courses and distances: North 1,728.00 feet to a point having Coordinates of X = 2,666,442.00 and Y = 349,262.00, and West 1,592.00 feet to a point on the West boundary of said Block 19, having Coordinates of X = 2,664,850.00 and Y = 349,262.00; thence North 2,568.00 feet along said West boundary of said Block 19 to the point of beginning, containing approximately **1,326.47 acres**, all as more particularly outlined on a plat on file in the Office of Mineral Resources, Department of Natural Resources. All bearings, distances and coordinates are based on Louisiana Coordinate System of 1927, (North or South Zone), where applicable.

NOTE: The above description of the Tract nominated for lease has been provided and corrected, where required, exclusively by the nomination party. Any mineral lease selected from this Tract and awarded by the Louisiana State Mineral and Energy Board shall be without warranty of any kind, either express, implied, or statutory, including, but not limited to, the implied warranties of merchantability and fitness for a particular purpose. Should the mineral lease awarded by the Louisiana State Mineral and Energy Board be subsequently modified, cancelled or abrogated due to the existence of conflicting leases, operating agreements, private claims or other future obligations or conditions which may affect all or any portion of the leased Tract, it shall not relieve the Lessee of the obligation to pay any bonus due thereon to the Louisiana State Mineral and Energy Board, nor shall the Louisiana State Mineral and Energy Board be obligated to refund any consideration paid by the Lessor prior to such modification, cancellation, or abrogation, including, but not limited to, bonuses, rentals and royalties.

NOTE: The State of Louisiana does hereby reserve, and this lease shall be subject to, the imprescriptible right of surface use in the nature of a servitude in favor of the Department of Natural Resources, including its Offices and Commissions, for the sole purpose of implementing, constructing, servicing and maintaining approved coastal zone management and/or restoration projects. Utilization of any and all rights derived under this lease by the mineral lessee, its agents, successors or assigns, shall not interfere with nor hinder the reasonable surface use by the Department of Natural Resources, its Offices or Commissions, as herein above reserved.

NOTE: It appears, according to our records, that a portion of this Tract is located within the restrictive safety fairway area as set out by the Corps of Engineers, U.S. Army and/or the restrictive anchorage area as set out by the U.S. Coast Guard.

NOTE: This tract is located in an area designated by the Louisiana Legislature or the Wildlife and Fisheries Commission as a Public Oyster Seed Ground, Reservation, or area of Calcasieu or Sabine Lake. Proposed projects occurring in these areas will be evaluated on a case by case basis by Louisiana Department of Wildlife & Fisheries. Modifications to proposed project features including, but not limited to, access routes, well sites, flowlines, and appurtenant structures maybe required by the Louisiana Department of Wildlife and Fisheries. In addition, compensatory mitigation will be required to offset unavoidable habitat impacts.

Applicant: THEOPHILUS OIL, GAS & LAND SERVICES, LLC

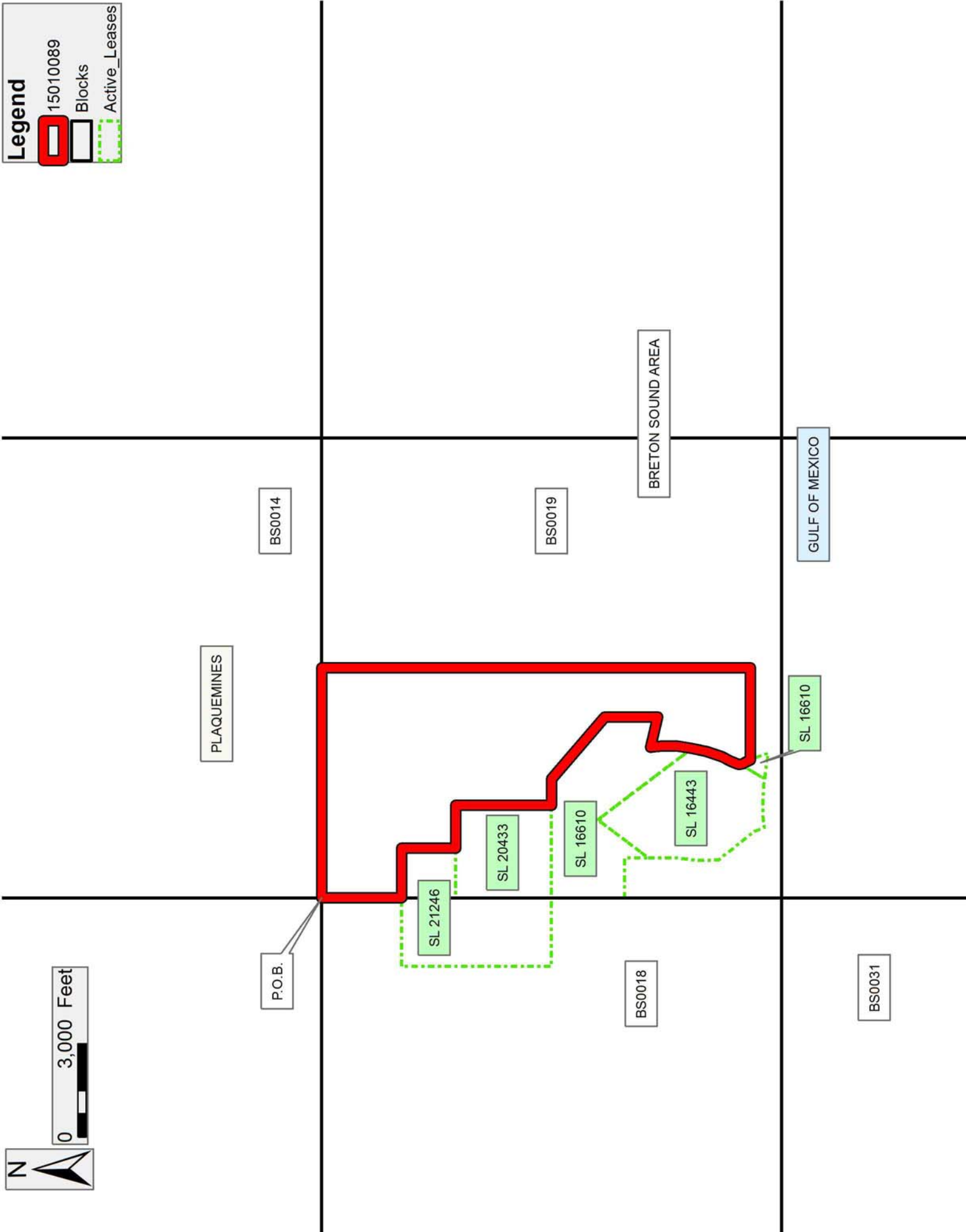
Bidder	Cash Payment	Price/Acre	Rental	Oil	Gas	Other

Legend

15010089

Blocks

Active_Leases



TRACT 44169 - Lafourche Parish, Louisiana

All of the lands now or formerly constituting the beds and bottoms of all water bodies of every nature and description as to which title is vested in the State of Louisiana, together with all islands arising therein and other lands formed by accretion or by reliction, where allowed by law, excepting tax adjudicated lands, and not presently under mineral lease on January 14, 2015, situated in Lafourche Parish, Louisiana, and more particularly described as follows: Beginning at a point having Coordinates of X = 2,228,760.92 and Y = 352,821.79; thence North 87 degrees 46 minutes 13 seconds East 15,673.06 feet to a point having Coordinates of X = 2,244,422.12 and Y = 353,431.58; thence South 00 degrees 20 minutes 21 seconds East 6,024.19 feet to a point having Coordinates of X = 2,244,457.79 and Y = 347,407.50; thence South 89 degrees 00 minutes 40 seconds West 15,713.90 feet to a point having Coordinates of X = 2,228,746.23 and Y = 347,136.26; thence North 00 degrees 08 minutes 53 seconds East 5,685.55 feet to the point of beginning, (This tract includes only waterbottoms claimed and owned by the state and specifically excludes any land which the state may claim or own and to which the mineral rights are vested in the state), containing approximately **677 acres**, all as more particularly outlined on a plat on file in the Office of Mineral Resources, Department of Natural Resources. All bearings, distances and coordinates are based on Louisiana Coordinate System of 1927, (North or South Zone), where applicable.

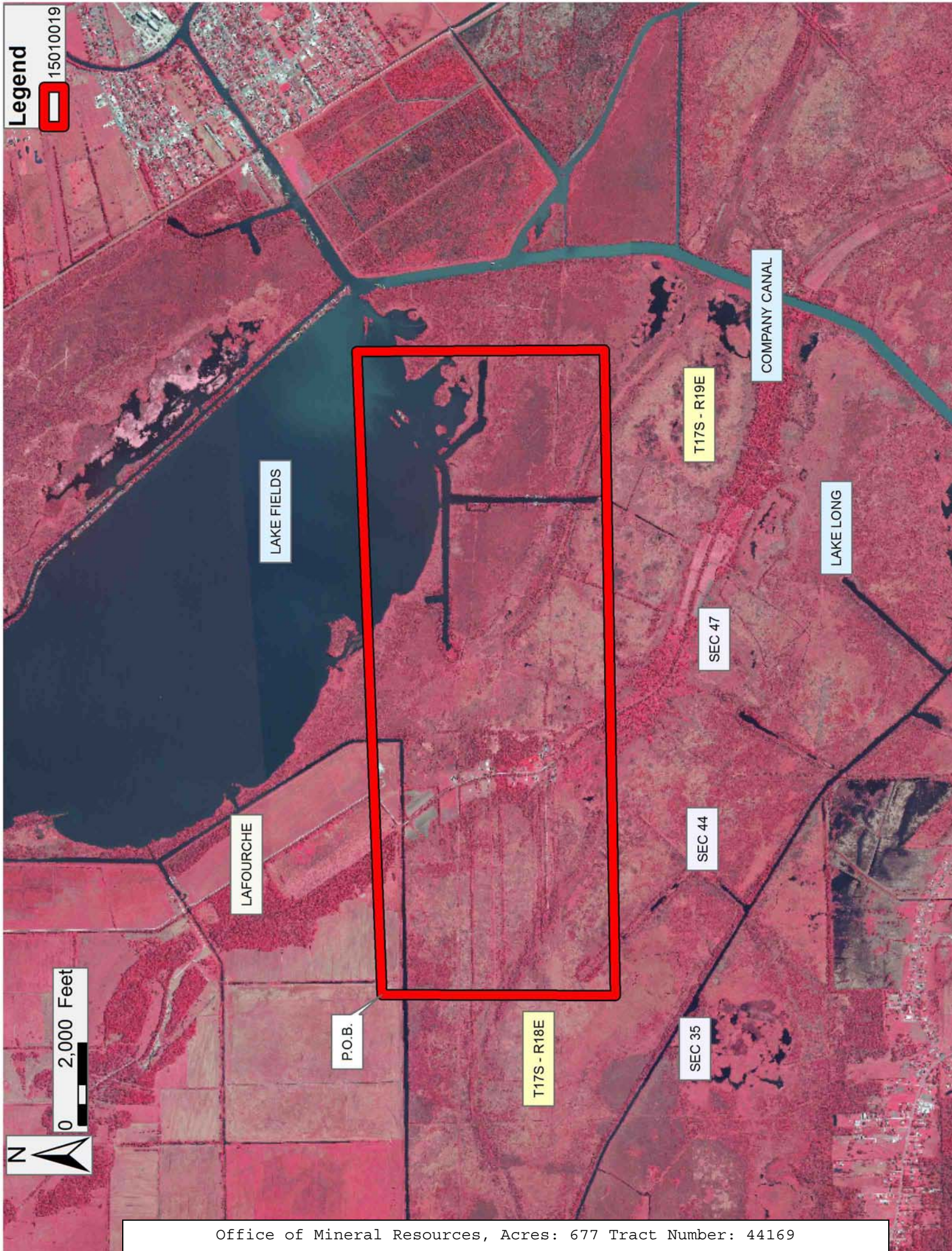
NOTE: The above description of the Tract nominated for lease has been provided and corrected, where required, exclusively by the nomination party. Any mineral lease selected from this Tract and awarded by the Louisiana State Mineral and Energy Board shall be without warranty of any kind, either express, implied, or statutory, including, but not limited to, the implied warranties of merchantability and fitness for a particular purpose. Should the mineral lease awarded by the Louisiana State Mineral and Energy Board be subsequently modified, cancelled or abrogated due to the existence of conflicting leases, operating agreements, private claims or other future obligations or conditions which may affect all or any portion of the leased Tract, it shall not relieve the Lessee of the obligation to pay any bonus due thereon to the Louisiana State Mineral and Energy Board, nor shall the Louisiana State Mineral and Energy Board be obligated to refund any consideration paid by the Lessor prior to such modification, cancellation, or abrogation, including, but not limited to, bonuses, rentals and royalties.

NOTE: The State of Louisiana does hereby reserve, and this lease shall be subject to, the imprescriptible right of surface use in the nature of a servitude in favor of the Department of Natural Resources, including its Offices and Commissions, for the sole purpose of implementing, constructing, servicing and maintaining approved coastal zone management and/or restoration projects. Utilization of any and all rights derived under this lease by the mineral lessee, its agents, successors or assigns, shall not interfere with nor hinder the reasonable surface use by the

Department of Natural Resources, its Offices or Commissions, as herein above reserved.

Applicant: BARKER ENERGY

Bidder	Cash Payment	Price/ Acre	Rental	Oil	Gas	Other



TRACT 44170 - Lafourche and Terrebonne Parishes, Louisiana

All of the lands now or formerly constituting the beds and bottoms of all water bodies of every nature and description as to which title is vested in the State of Louisiana, together with all islands arising therein and other lands formed by accretion or by reliction, where allowed by law, excepting tax adjudicated lands, and not presently under mineral lease on January 14, 2015, situated in Lafourche and Terrebonne Parishes, Louisiana, and more particularly described as follows: Beginning at a point having Coordinates of X = 2,228,746.23 and Y = 347,136.26; thence North 89 degrees 00 minutes 40 seconds East 15,713.90 feet to a point having Coordinates of X = 2,224,457.79 and Y = 347,407.50; thence South 00 degrees 11 minutes 02 second East 6,713.26 feet to a point on the North boundary of State Lease No. 9637, as amended having Coordinates of X = 2,244,479.33 and Y = 340,694.27; thence along the boundaries of said State Lease No. 9637 the following courses: North 69 degrees 55 minutes 14 seconds West 380.55 feet to a point having Coordinates of X = 2,244,121.91 and Y = 340,824.92, North 79 degrees 38 minutes 37 seconds West 457.92 feet to a point having Coordinates of X = 2,243,671.45 and Y = 340,907.24, North 89 degrees 22 minutes 55 seconds West 421.74 feet to a point having Coordinates of X = 2,243,249.73 and Y = 340,911.79, South 80 degrees 55 minutes 21 seconds West 454.71 feet to a point having Coordinates of X = 2,242,800.72 and Y = 340,840.05, South 70 degrees 03 minutes 29 seconds West 420.00 feet to a point having Coordinates of X = 2,242,405.90 and Y = 340,696.80, South 60 degrees 10 minutes 42 seconds West 471.40 feet to a point having Coordinates of X = 2,241,996.92 and Y = 340,462.37 and South 48 degrees 22 minutes 44 seconds West 711.78 feet to a point of intersection with State Lease No. 20941 having Coordinates of X = 2,241,464.83 and Y = 339,989.61; thence along the boundaries of said State Lease No. 20941 the following courses: North 53 degrees 54 minutes 40 seconds West 2,397.04 feet to a point having Coordinates of X = 2,239,527.77 and Y = 341,401.56, South 01 degrees 20 minutes 56 seconds West 4,590.28 feet to a point having Coordinates of X = 2,239,419.72 and Y = 336,812.55, South 89 degrees 03 minutes 19 seconds West 3,228.22 feet to a point having Coordinates of X = 2,236,191.93 and Y = 336,759.32, South 36 degrees 35 minutes 18 seconds East 234.30 feet to a point having Coordinates of X = 2,236,331.59 and Y = 336,571.19, South 84 degrees 35 minutes 19 seconds East 1,749.00 feet to a point having Coordinates of X = 2,238,072.80 and Y = 336,406.25, South 59 degrees 35 minutes 19 seconds East 1,278.20 feet to a point having Coordinates of X = 2,239,175.13 and Y = 335,759.22, South 59 degrees 31 minutes 12 seconds East 338.80 feet to a point having Coordinates of X = 2,239,467.11 and Y = 335,587.37, South 06 degrees 37 minutes 11 seconds East 336.60 feet to a point having Coordinates of X = 2,239,505.92 and Y = 335,253.01, South 42 degrees 30 minutes 43 seconds East 1,187.28 feet to a point having Coordinates of X = 2,240,308.21 and Y = 334,377.83, South 31 degrees 25 minutes 33 seconds East 2,000.39 feet to a point having Coordinates of X = 2,241,351.20 and Y = 332,670.86, South 17 degrees 02 minutes 51 seconds East 988.17 feet to a point having Coordinates of X = 2,241,640.90 and Y = 331,726.11 and South 70 degrees 15 minutes 28 seconds East 361.13 feet to a point having

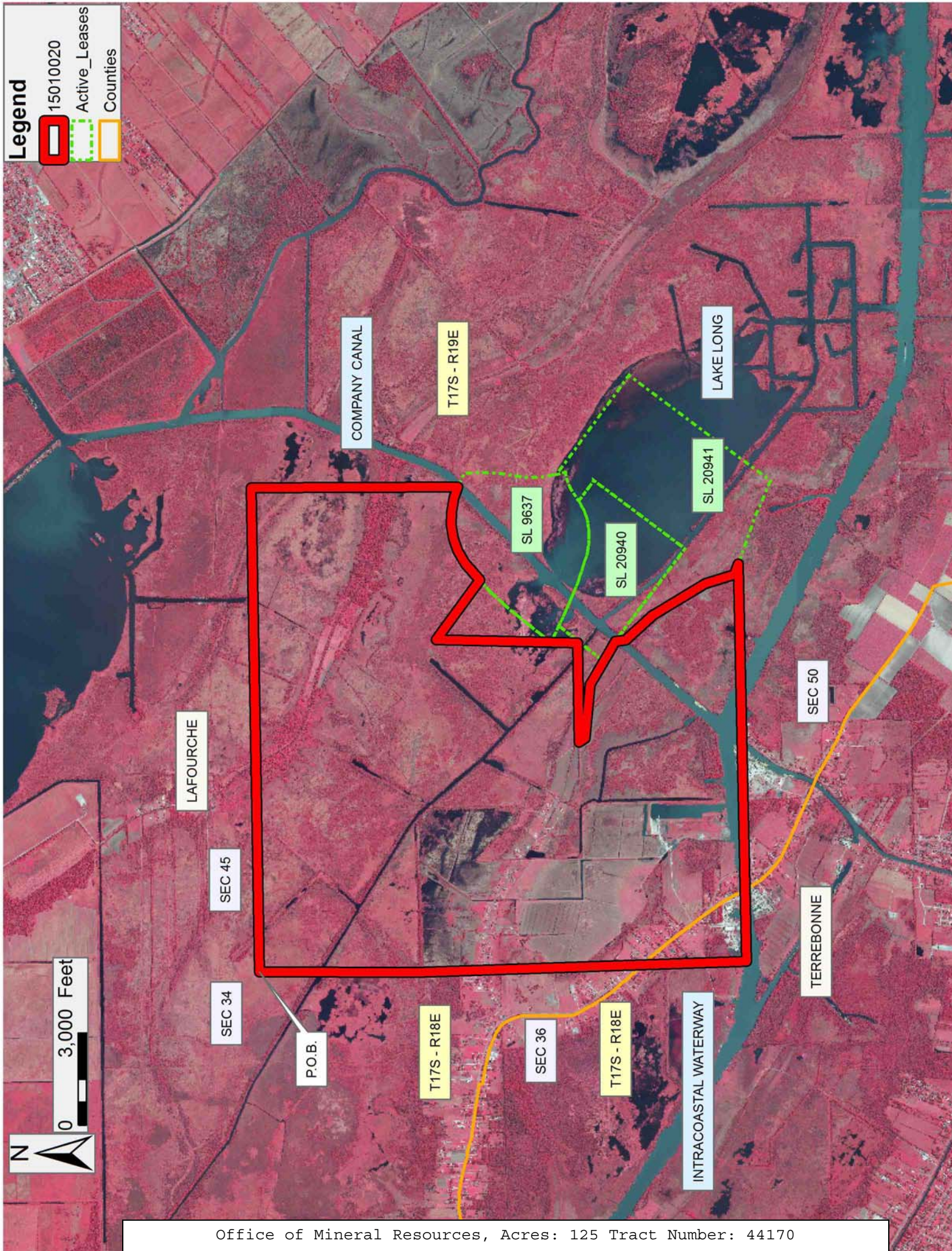
Coordinates of X = 2,241,980.81 and Y = 331,604.12; thence South 88 degrees 46 minutes 03 seconds West 12,903.07 feet to a point having Coordinates of X = 2,229,080.72 and Y = 331,326.58; thence North 01 degrees 52 minutes 07 seconds West 10,664.93 feet to a point having Coordinates of X = 2,228,732.96 and Y = 341,985.85; thence North 00 degrees 08 minutes 51 seconds East 5,150.42 feet to the point of beginning, containing approximately **125 acres**, all as more particularly outlined on a plat on file in the Office of Mineral Resources, Department of Natural Resources. All bearings, distances and coordinates are based on Louisiana Coordinate System of 1927, (North or South Zone), where applicable.

NOTE: The above description of the Tract nominated for lease has been provided and corrected, where required, exclusively by the nomination party. Any mineral lease selected from this Tract and awarded by the Louisiana State Mineral and Energy Board shall be without warranty of any kind, either express, implied, or statutory, including, but not limited to, the implied warranties of merchantability and fitness for a particular purpose. Should the mineral lease awarded by the Louisiana State Mineral and Energy Board be subsequently modified, cancelled or abrogated due to the existence of conflicting leases, operating agreements, private claims or other future obligations or conditions which may affect all or any portion of the leased Tract, it shall not relieve the Lessee of the obligation to pay any bonus due thereon to the Louisiana State Mineral and Energy Board, nor shall the Louisiana State Mineral and Energy Board be obligated to refund any consideration paid by the Lessor prior to such modification, cancellation, or abrogation, including, but not limited to, bonuses, rentals and royalties.

NOTE: The State of Louisiana does hereby reserve, and this lease shall be subject to, the imprescriptible right of surface use in the nature of a servitude in favor of the Department of Natural Resources, including its Offices and Commissions, for the sole purpose of implementing, constructing, servicing and maintaining approved coastal zone management and/or restoration projects. Utilization of any and all rights derived under this lease by the mineral lessee, its agents, successors or assigns, shall not interfere with nor hinder the reasonable surface use by the Department of Natural Resources, its Offices or Commissions, as herein above reserved.

Applicant: BARKER ENERGY

Bidder	Cash Payment	Price/ Acre	Rental	Oil	Gas	Other



Legend

- 15010020
- Active_Leases
- Counties

0 3,000 Feet

N

TRACT 44171 - Lafourche and Terrebonne Parishes, Louisiana

All of the lands now or formerly constituting the beds and bottoms of all water bodies of every nature and description as to which title is vested in the State of Louisiana, together with all islands arising therein and other lands formed by accretion or by reliction, where allowed by law, excepting tax adjudicated lands, and not presently under mineral lease on January 14, 2015, situated in Lafourche and Terrebonne Parishes, Louisiana, and more particularly described as follows: Beginning at a point having Coordinates of X = 2,212,801.54 and Y = 346,944.43; thence North 89 degrees 18 minutes 38 seconds East 15,945.84 feet to a point having Coordinates of X = 2,228,746.23 and Y = 347,136.26; thence South 00 degrees 08 minutes 51 seconds West 5,150.43 feet to a point having Coordinates of X = 2,228,732.96 and Y = 341,985.85; thence South 01 degrees 48 minutes 59 seconds East 10,635.57 feet to a point having Coordinates of X = 2,229,070.06 and Y = 331,355.62; thence South 89 degrees 21 minutes 26 seconds West 16,085.05 feet to a point having Coordinates of X = 2,212,986.02 and Y = 331,175.16; thence North 00 degrees 40 minutes 13 seconds West 15,770.34 feet to the point of beginning, containing approximately **24 acres**, all as more particularly outlined on a plat on file in the Office of Mineral Resources, Department of Natural Resources. All bearings, distances and coordinates are based on Louisiana Coordinate System of 1927, (North or South Zone), where applicable.

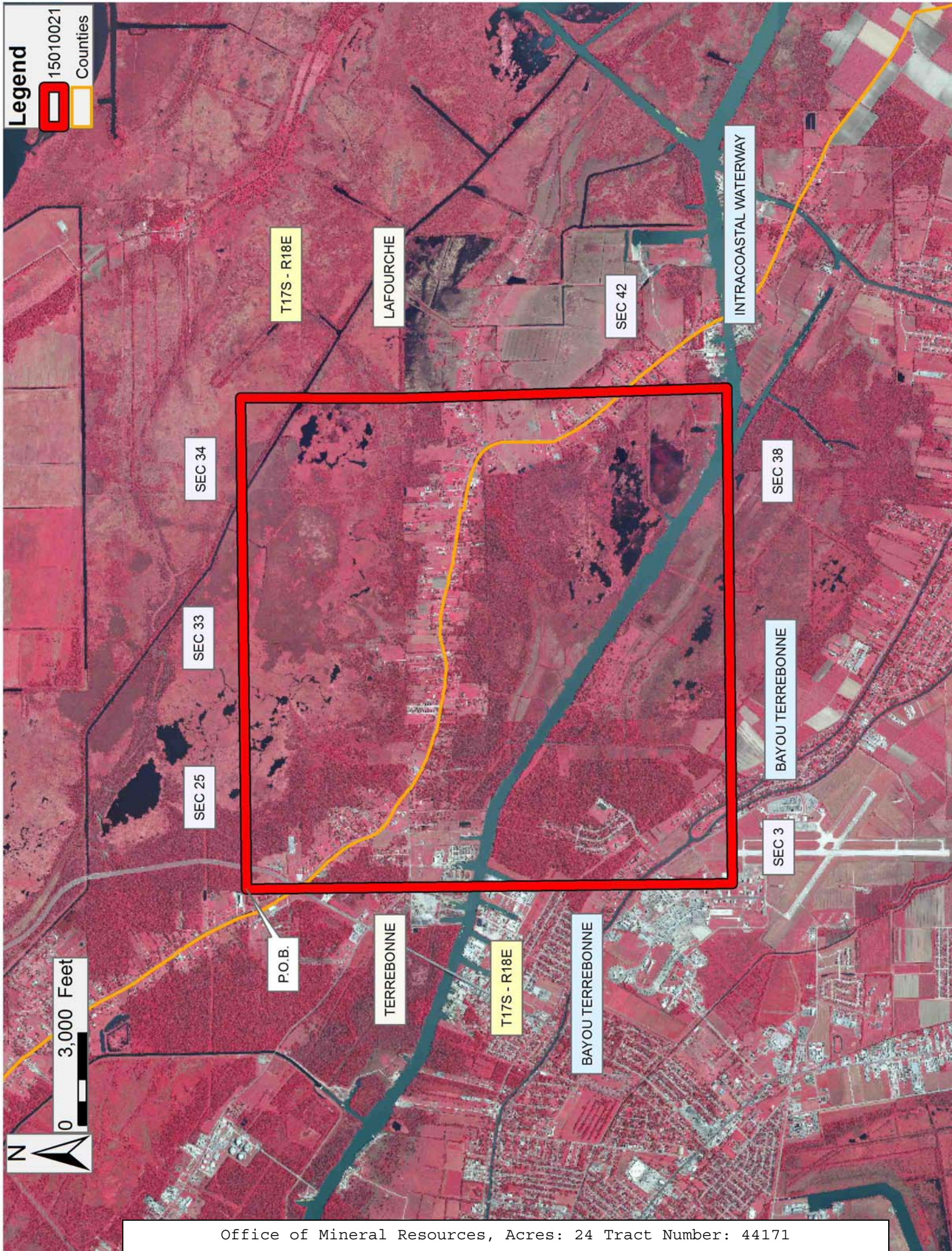
NOTE: The above description of the Tract nominated for lease has been provided and corrected, where required, exclusively by the nomination party. Any mineral lease selected from this Tract and awarded by the Louisiana State Mineral and Energy Board shall be without warranty of any kind, either express, implied, or statutory, including, but not limited to, the implied warranties of merchantability and fitness for a particular purpose. Should the mineral lease awarded by the Louisiana State Mineral and Energy Board be subsequently modified, cancelled or abrogated due to the existence of conflicting leases, operating agreements, private claims or other future obligations or conditions which may affect all or any portion of the leased Tract, it shall not relieve the Lessee of the obligation to pay any bonus due thereon to the Louisiana State Mineral and Energy Board, nor shall the Louisiana State Mineral and Energy Board be obligated to refund any consideration paid by the Lessor prior to such modification, cancellation, or abrogation, including, but not limited to, bonuses, rentals and royalties.

NOTE: The State of Louisiana does hereby reserve, and this lease shall be subject to, the imprescriptible right of surface use in the nature of a servitude in favor of the Department of Natural Resources, including its Offices and Commissions, for the sole purpose of implementing, constructing, servicing and maintaining approved coastal zone management and/or restoration projects. Utilization of any and all rights derived under this lease by the mineral lessee, its agents, successors or assigns, shall not interfere with nor hinder the reasonable surface use by the

Department of Natural Resources, its Offices or Commissions, as herein above reserved.

Applicant: BARKER ENERGY

Bidder	Cash Payment	Price/ Acre	Rental	Oil	Gas	Other



TRACT 44172 - St. Mary Parish, Louisiana

All of the lands now or formerly constituting the beds and bottoms of all water bodies of every nature and description as to which title is vested in the State of Louisiana, together with all islands arising therein and other lands formed by accretion or by reliction, where allowed by law, excepting tax adjudicated lands, and not presently under mineral lease on January 14, 2015, situated in St. Mary Parish, Louisiana, and more particularly described as follows: Beginning at a point having Coordinates of X = 1,968,405.00 and Y = 350,504.00; thence East 13,244.00 feet to a point having Coordinates of X = 1,981,649.00 and Y = 350,504.00; thence South 10,289.00 feet to a point having Coordinates of X = 1,981,649.00 and Y = 340,215.00; thence West 13,244.00 feet to a point having Coordinates of X = 1,968,405.00 and Y = 340,215.00; thence North 10,289.00 feet to the point of beginning, containing approximately **1,866 acres**, all as more particularly outlined on a plat on file in the Office of Mineral Resources, Department of Natural Resources. All bearings, distances and coordinates are based on Louisiana Coordinate System of 1927, (North or South Zone), where applicable.

NOTE: The above description of the Tract nominated for lease has been provided and corrected, where required, exclusively by the nomination party. Any mineral lease selected from this Tract and awarded by the Louisiana State Mineral and Energy Board shall be without warranty of any kind, either express, implied, or statutory, including, but not limited to, the implied warranties of merchantability and fitness for a particular purpose. Should the mineral lease awarded by the Louisiana State Mineral and Energy Board be subsequently modified, cancelled or abrogated due to the existence of conflicting leases, operating agreements, private claims or other future obligations or conditions which may affect all or any portion of the leased Tract, it shall not relieve the Lessee of the obligation to pay any bonus due thereon to the Louisiana State Mineral and Energy Board, nor shall the Louisiana State Mineral and Energy Board be obligated to refund any consideration paid by the Lessor prior to such modification, cancellation, or abrogation, including, but not limited to, bonuses, rentals and royalties.

NOTE: The State of Louisiana does hereby reserve, and this lease shall be subject to, the imprescriptible right of surface use in the nature of a servitude in favor of the Department of Natural Resources, including its Offices and Commissions, for the sole purpose of implementing, constructing, servicing and maintaining approved coastal zone management and/or restoration projects. Utilization of any and all rights derived under this lease by the mineral lessee, its agents, successors or assigns, shall not interfere with nor hinder the reasonable surface use by the Department of Natural Resources, its Offices or Commissions, as herein above reserved.

Applicant: HAROLD J. ANDERSON, INC.

Bidder	Cash Payment	Price/ Acre	Rental	Oil	Gas	Other



TRACT 44173 - St. Mary Parish, Louisiana

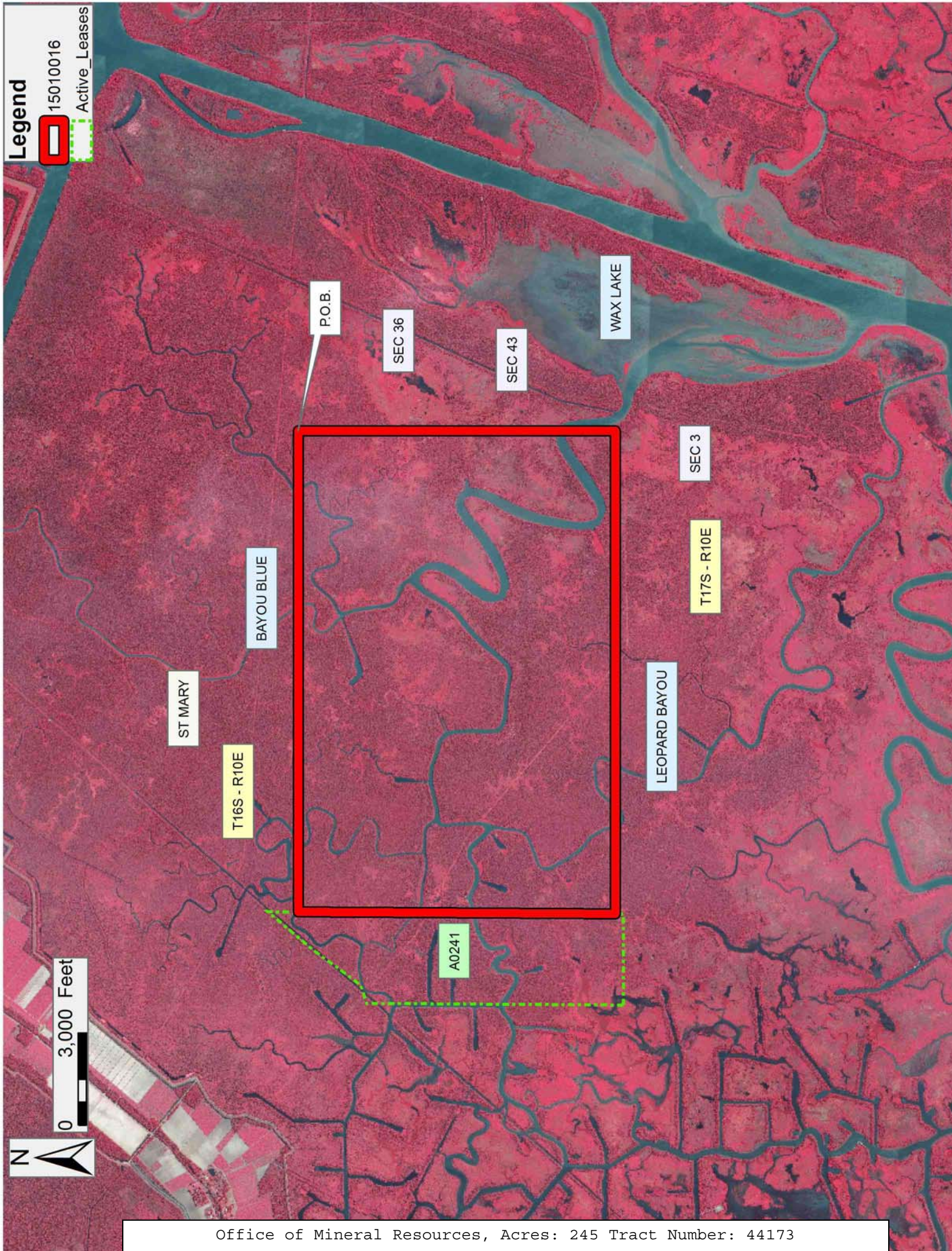
All of the lands now or formerly constituting the beds and bottoms of all water bodies of every nature and description as to which title is vested in the State of Louisiana, together with all islands arising therein and other lands formed by accretion or by reliction, where allowed by law, excepting tax adjudicated lands, and not presently under mineral lease on January 14, 2015, situated in St. Mary Parish, Louisiana, and more particularly described as follows: Beginning at a point having Coordinates of X = 1,968,405.00 and Y = 350,504.00; thence South 10,289.00 feet to a point having Coordinates of X = 1,968,405.00 and Y = 340,215.00; thence West approximately 15,679 feet to a point on the boundary of Operating Agreement A0241 having a Coordinate of Y = 340,215.00; thence Northerly along the boundary of said Operating Agreement A0241 to the point of intersection with an East-West line having a Coordinate of Y = 350,504.00; thence East approximately 15,612 feet to the point of beginning, containing approximately **245 acres**, all as more particularly outlined on a plat on file in the Office of Mineral Resources, Department of Natural Resources. All bearings, distances and coordinates are based on Louisiana Coordinate System of 1927, (North or South Zone), where applicable.

NOTE: The above description of the Tract nominated for lease has been provided and corrected, where required, exclusively by the nomination party. Any mineral lease selected from this Tract and awarded by the Louisiana State Mineral and Energy Board shall be without warranty of any kind, either express, implied, or statutory, including, but not limited to, the implied warranties of merchantability and fitness for a particular purpose. Should the mineral lease awarded by the Louisiana State Mineral and Energy Board be subsequently modified, cancelled or abrogated due to the existence of conflicting leases, operating agreements, private claims or other future obligations or conditions which may affect all or any portion of the leased Tract, it shall not relieve the Lessee of the obligation to pay any bonus due thereon to the Louisiana State Mineral and Energy Board, nor shall the Louisiana State Mineral and Energy Board be obligated to refund any consideration paid by the Lessor prior to such modification, cancellation, or abrogation, including, but not limited to, bonuses, rentals and royalties.

NOTE: The State of Louisiana does hereby reserve, and this lease shall be subject to, the imprescriptible right of surface use in the nature of a servitude in favor of the Department of Natural Resources, including its Offices and Commissions, for the sole purpose of implementing, constructing, servicing and maintaining approved coastal zone management and/or restoration projects. Utilization of any and all rights derived under this lease by the mineral lessee, its agents, successors or assigns, shall not interfere with nor hinder the reasonable surface use by the Department of Natural Resources, its Offices or Commissions, as herein above reserved.

Applicant: HAROLD J. ANDERSON, INC.

Bidder	Cash Payment	Price/ Acre	Rental	Oil	Gas	Other



TRACT 44174 - Portion of Blocks 20, and 29, Breton Sound Area, Plaquemines Parish, Louisiana

All of the lands now or formerly constituting the beds and bottoms of all water bodies of every nature and description as to which title is vested in the State of Louisiana, together with all islands arising therein and other lands formed by accretion or by reliction, where allowed by law, excepting tax adjudicated lands, and not presently under mineral lease on January 14, 2015, situated in Plaquemines Parish, Louisiana, and more particularly described as follows: Beginning at a point on the West line of Block 20, Breton Sound Area, having Coordinates of X = 2,679,600.00 and Y = 338,085.98; thence East 7,350.00 feet to a point on the West boundary of State Lease No. 1997, as amended, having Coordinates of X = 2,686,950.00 and Y = 338,085.98; thence along the boundary of said State Lease No. 1997, the following courses and distances: South 1,005.98 feet to a point on the Southern boundary of said Block 19, also being a point on the Northern boundary of Block 29, Breton Sound Area, having Coordinates of X = 2,686,950.00 and Y = 337,080.00 and West 25.00 feet to a point on the Western boundary of State Lease No. 2000, as amended, to a point having Coordinates of X = 2,686,975.00 and Y = 337,080.00; thence along the boundary of said State Lease No. 2000 the following courses and distances: South 7,375.00 feet to a point having Coordinates of X = 2,686,975.00 and Y = 329,705.00, West 4,375.00 feet to a point having Coordinates of X = 2,682,600.00 and Y = 329,705.00, South 3,000.00 feet to a point having Coordinates of X = 2,682,600.00 and Y = 326,705.00, and West 3,000.00 feet to a point on the Western boundary of said Block 29, having Coordinates of X = 2,679,600.00 and Y = 326,705.00; thence North 11,380.98 feet to the point of beginning, containing approximately **1,624.99 acres**, all as more particularly outlined on a plat on file in the Office of Mineral Resources, Department of Natural Resources. All bearings, distances and coordinates are based on Louisiana Coordinate System of 1927, (North or South Zone), where applicable.

NOTE: The above description of the Tract nominated for lease has been provided and corrected, where required, exclusively by the nomination party. Any mineral lease selected from this Tract and awarded by the Louisiana State Mineral and Energy Board shall be without warranty of any kind, either express, implied, or statutory, including, but not limited to, the implied warranties of merchantability and fitness for a particular purpose. Should the mineral lease awarded by the Louisiana State Mineral and Energy Board be subsequently modified, cancelled or abrogated due to the existence of conflicting leases, operating agreements, private claims or other future obligations or conditions which may affect all or any portion of the leased Tract, it shall not relieve the Lessee of the obligation to pay any bonus due thereon to the Louisiana State Mineral and Energy Board, nor shall the Louisiana State Mineral and Energy Board be obligated to refund any consideration paid by the Lessor prior to such modification, cancellation, or abrogation, including, but not limited to, bonuses, rentals and royalties.

NOTE: The State of Louisiana does hereby reserve, and this lease shall be subject to, the imprescriptible right of surface use in the nature of a servitude in favor of the Department of Natural Resources, including its Offices and Commissions, for the sole purpose of implementing, constructing, servicing and maintaining approved coastal zone management and/or restoration projects. Utilization of any and all rights derived under this lease by the mineral lessee, its agents, successors or assigns, shall not interfere with nor hinder the reasonable surface use by the Department of Natural Resources, its Offices or Commissions, as herein above reserved.

NOTE: It appears, according to our records, that a portion of this Tract is located within the restrictive safety fairway area as set out by the Corps of Engineers, U.S. Army and/or the restrictive anchorage area as set out by the U.S. Coast Guard.

NOTE: This tract is located in an area designated by the Louisiana Legislature or the Wildlife and Fisheries Commission as a Public Oyster Seed Ground, Reservation, or area of Calcasieu or Sabine Lake. Proposed projects occurring in these areas will be evaluated on a case by case basis by Louisiana Department of Wildlife & Fisheries. Modifications to proposed project features including, but not limited to, access routes, well sites, flowlines, and appurtenant structures maybe required by the Louisiana Department of Wildlife and Fisheries. In addition, compensatory mitigation will be required to offset unavoidable habitat impacts.

Applicant: THEOPHILUS OIL, GAS & LAND SERVICES, LLC

Bidder	Cash Payment	Price/ Acre	Rental	Oil	Gas	Other

Legend

15010094

Active_Leases

Blocks

