

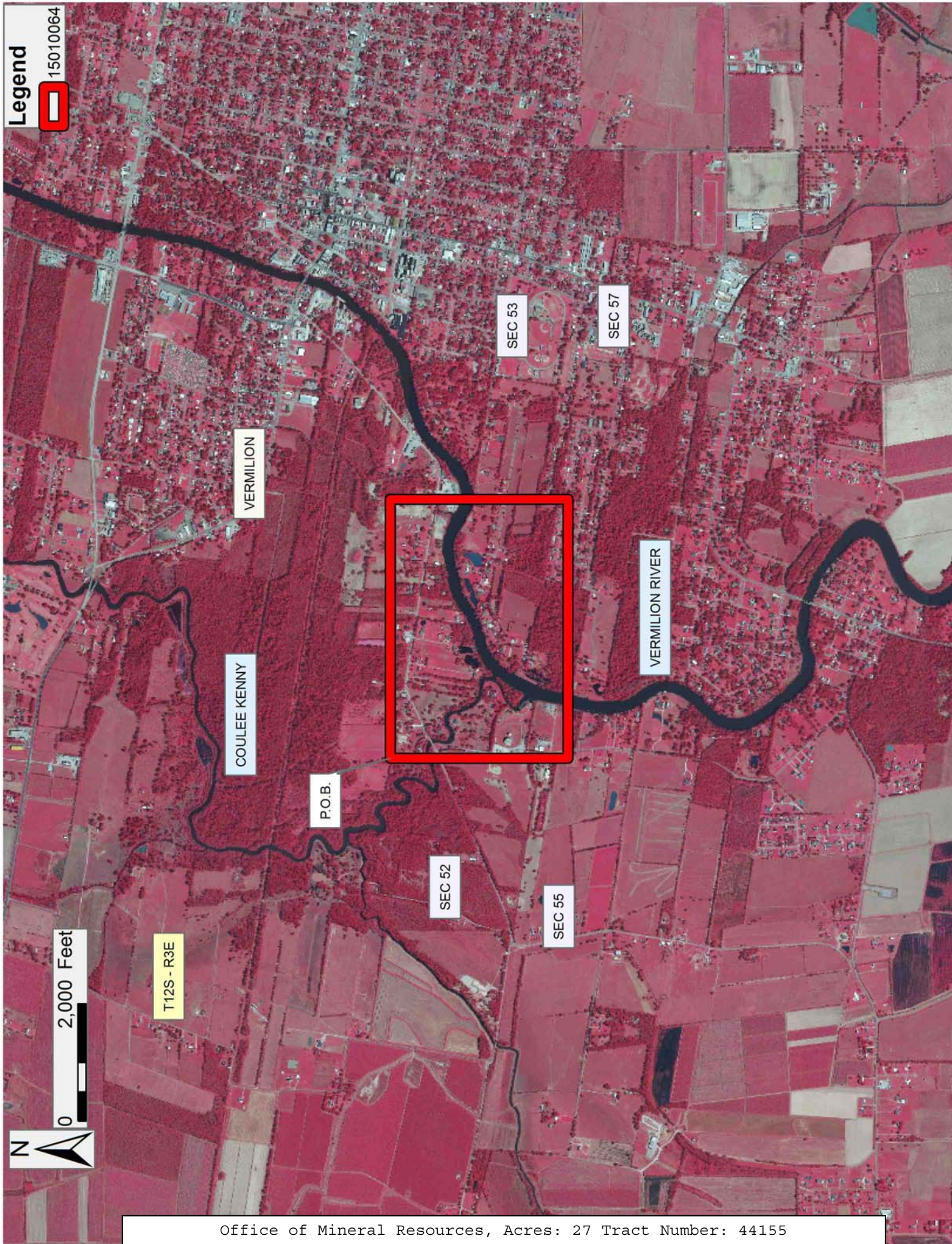
TRACT 44155 - Vermilion Parish, Louisiana

All of the lands now or formerly constituting the beds and bottoms of all water bodies of every nature and description as to which title is vested in the State of Louisiana, together with all islands arising therein and other lands formed by accretion or by reliction, where allowed by law, excepting tax adjudicated lands, and not presently under mineral lease on January 14, 2015, situated in Vermilion Parish, Louisiana, and more particularly described as follows: Beginning at a point having Coordinates of X = 1,736,721.09 and Y = 475,144.57; thence East 4,413.55 feet to a point having Coordinates of X = 1,741,134.63 and Y = 475,144.57; thence South 3,024.20 feet to a point having Coordinates of X = 1,741,134.63 and Y = 472,120.37; thence West 4,413.55 feet to a point having Coordinates of X = 1,736,721.09 and Y = 472,120.37; thence North 3,024.20 feet to the point of beginning, containing approximately **27 acres**, all as more particularly outlined on a plat on file in the Office of Mineral Resources, Department of Natural Resources. All bearings, distances and coordinates are based on Louisiana Coordinate System of 1927, (North or South Zone), where applicable.

NOTE: The above description of the Tract nominated for lease has been provided and corrected, where required, exclusively by the nomination party. Any mineral lease selected from this Tract and awarded by the Louisiana State Mineral and Energy Board shall be without warranty of any kind, either express, implied, or statutory, including, but not limited to, the implied warranties of merchantability and fitness for a particular purpose. Should the mineral lease awarded by the Louisiana State Mineral and Energy Board be subsequently modified, cancelled or abrogated due to the existence of conflicting leases, operating agreements, private claims or other future obligations or conditions which may affect all or any portion of the leased Tract, it shall not relieve the Lessee of the obligation to pay any bonus due thereon to the Louisiana State Mineral and Energy Board, nor shall the Louisiana State Mineral and Energy Board be obligated to refund any consideration paid by the Lessor prior to such modification, cancellation, or abrogation, including, but not limited to, bonuses, rentals and royalties.

Applicant: ACADIAN LAND SERVICES, L.L.C.

Bidder	Cash Payment	Price/ Acre	Rental	Oil	Gas	Other



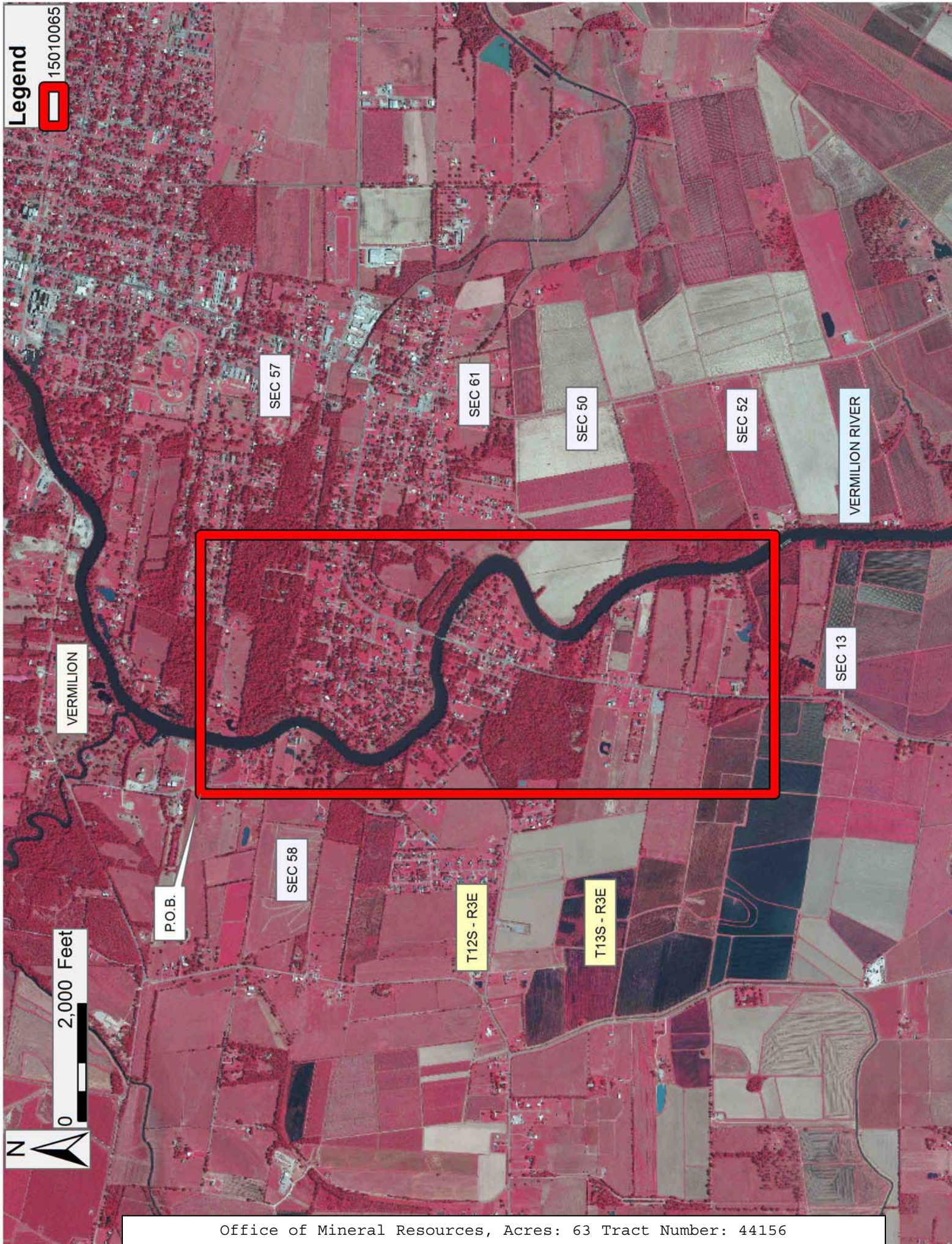
TRACT 44156 - Vermilion Parish, Louisiana

All of the lands now or formerly constituting the beds and bottoms of all water bodies of every nature and description as to which title is vested in the State of Louisiana, together with all islands arising therein and other lands formed by accretion or by reliction, where allowed by law, excepting tax adjudicated lands, and not presently under mineral lease on January 14, 2015, situated in Vermilion Parish, Louisiana, and more particularly described as follows: Beginning at a point having Coordinates of X = 1,736,721.09 and Y = 472,120.37; thence East 4,413.55 to a point having Coordinates of X = 1,741,134.63 and Y = 472,120.37; thence South 9,778.59 feet to a point having Coordinates of X = 1,741,134.63 and Y = 462,341.79; thence West 4,413.55 feet to a point having Coordinates of X = 1,736,721.09 and Y = 462,341.79; thence North 9,778.59 feet to the point of beginning, containing approximately **63 acres**, all as more particularly outlined on a plat on file in the Office of Mineral Resources, Department of Natural Resources. All bearings, distances and coordinates are based on Louisiana Coordinate System of 1927, (North or South Zone), where applicable.

NOTE: The above description of the Tract nominated for lease has been provided and corrected, where required, exclusively by the nomination party. Any mineral lease selected from this Tract and awarded by the Louisiana State Mineral and Energy Board shall be without warranty of any kind, either express, implied, or statutory, including, but not limited to, the implied warranties of merchantability and fitness for a particular purpose. Should the mineral lease awarded by the Louisiana State Mineral and Energy Board be subsequently modified, cancelled or abrogated due to the existence of conflicting leases, operating agreements, private claims or other future obligations or conditions which may affect all or any portion of the leased Tract, it shall not relieve the Lessee of the obligation to pay any bonus due thereon to the Louisiana State Mineral and Energy Board, nor shall the Louisiana State Mineral and Energy Board be obligated to refund any consideration paid by the Lessor prior to such modification, cancellation, or abrogation, including, but not limited to, bonuses, rentals and royalties.

Applicant: ACADIAN LAND SERVICES, L.L.C.

Bidder	Cash Payment	Price/ Acre	Rental	Oil	Gas	Other



TRACT 44157 - St. Charles Parish, Louisiana

All of the lands now or formerly constituting the beds and bottoms of all water bodies of every nature and description as to which title is vested in the State of Louisiana, together with all islands arising therein and other lands formed by accretion or by reliction, where allowed by law, excepting tax adjudicated lands, and not presently under mineral lease on January 14, 2015, situated in St. Charles Parish, Louisiana, and more particularly described as follows: Beginning at a point having Coordinates of X = 2,331,855.00 and Y = 400,943.00; thence North 76 degrees 09 minutes 01 seconds East 9,295.05 feet to a point having Coordinates of X = 2,340,879.82 and Y = 403,168.00; thence South 11,049.00 feet to a point having Coordinates of X = 2,340,879.82 and Y = 392,119.00; thence West 9,024.82 feet to a point having Coordinates of X = 2,331,855.00 and Y = 392,119.00; thence North 2,125.47 feet to a point on the boundary of State Lease No. 21409 having Coordinates of X = 2,331,855.00 and Y = 394,244.47; thence North 89 degrees 33 minutes 24 seconds East 1,775.42 feet along the boundary of said State Lease No. 21409 to its Southeast corner and the Southwest corner of State Lease No. 21410 having Coordinates of X = 2,333,630.37 and Y = 394,258.21; thence along the boundary of said State Lease No. 21410 the following courses: North 89 degrees 33 minutes 13 seconds East 627.74 feet to a point having Coordinates of X = 2,334,258.09 and Y = 394,263.10, North 66 degrees 52 minutes 01 seconds East 2,884.07 feet to a point having Coordinates of X = 2,336,910.27 and Y = 395,396.16, North 30 degrees 02 minutes 51 seconds East 1,864.39 feet to a point having Coordinates of X = 2,337,843.80 and Y = 397,010.00 and West 4,326.13 feet to its Northwest corner and a point on the boundary of State Lease No. 21300 having Coordinates of X = 2,333,517.67 and Y = 397,010.00; thence along the boundary of said State Lease No. 21300 the following courses: North 01 degrees 35 minutes 04 seconds West 1,046.20 feet to a point having Coordinates of X = 2,333,488.74 and Y = 398,055.80 and South 89 degrees 41 minutes 37 seconds West 1,633.76 feet to a point having Coordinates of X = 2,331,855.00 and Y = 398,047.07; thence North 2,895.93 feet to the point of beginning, **LESS AND EXCEPT** that portion, if any, of the above described tract that may lie inside of the boundary of the Salvador Wildlife Management Area, containing approximately **1,329 acres**, all as more particularly outlined on a plat on file in the Office of Mineral Resources, Department of Natural Resources. All bearings, distances and coordinates are based on Louisiana Coordinate System of 1927, (North or South Zone), where applicable.

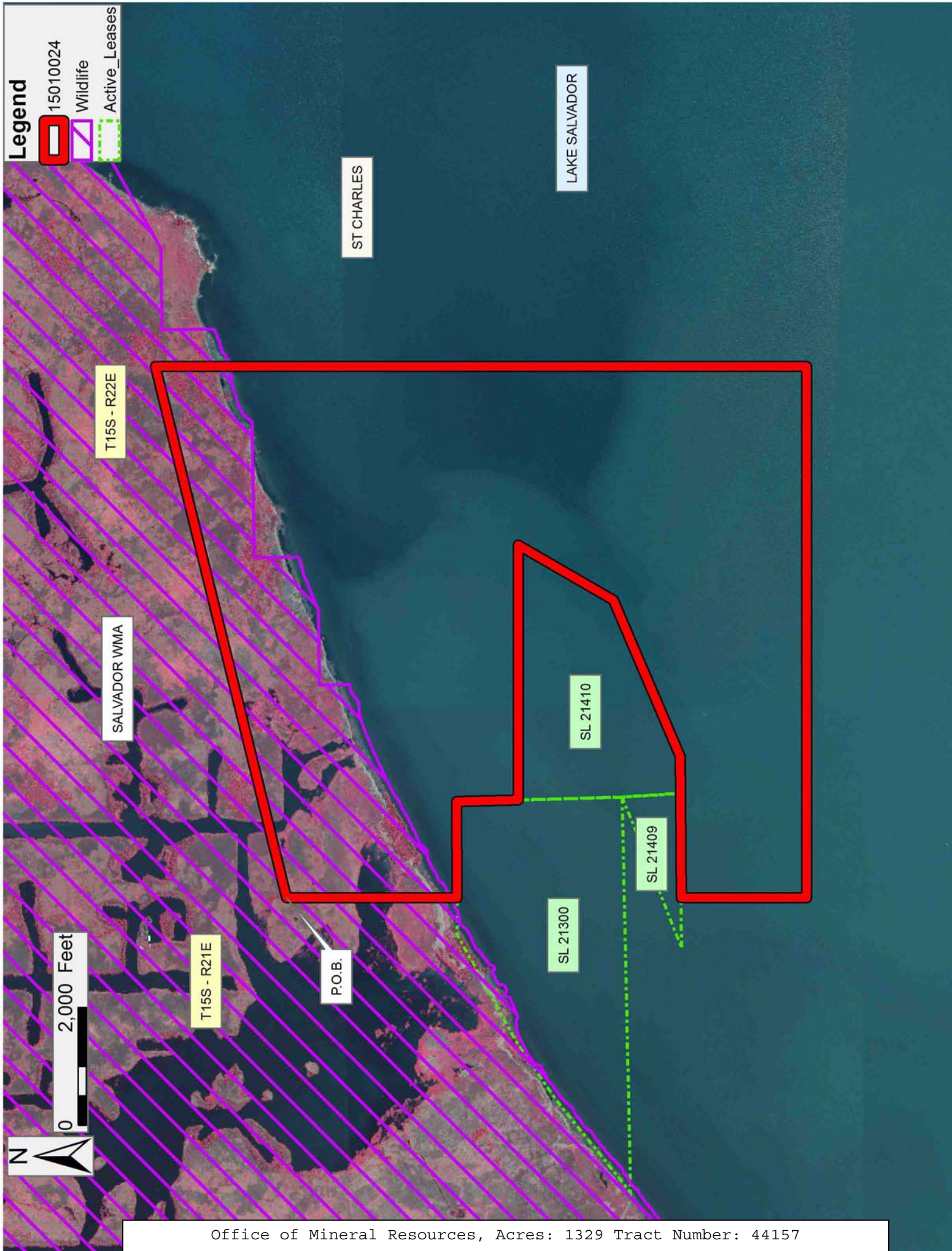
NOTE: The above description of the Tract nominated for lease has been provided and corrected, where required, exclusively by the nomination party. Any mineral lease selected from this Tract and awarded by the Louisiana State Mineral and Energy Board shall be without warranty of any kind, either express, implied, or statutory, including, but not limited to, the implied warranties of merchantability and fitness for a particular purpose. Should the mineral lease awarded by the Louisiana State Mineral and Energy Board be subsequently modified, cancelled or abrogated due to the existence of conflicting leases, operating agreements, private claims

or other future obligations or conditions which may affect all or any portion of the leased Tract, it shall not relieve the Lessee of the obligation to pay any bonus due thereon to the Louisiana State Mineral and Energy Board, nor shall the Louisiana State Mineral and Energy Board be obligated to refund any consideration paid by the Lessor prior to such modification, cancellation, or abrogation, including, but not limited to, bonuses, rentals and royalties.

NOTE: The State of Louisiana does hereby reserve, and this lease shall be subject to, the imprescriptible right of surface use in the nature of a servitude in favor of the Department of Natural Resources, including its Offices and Commissions, for the sole purpose of implementing, constructing, servicing and maintaining approved coastal zone management and/or restoration projects. Utilization of any and all rights derived under this lease by the mineral lessee, its agents, successors or assigns, shall not interfere with nor hinder the reasonable surface use by the Department of Natural Resources, its Offices or Commissions, as herein above reserved.

Applicant: LARRY S. MINTER, INC.

Bidder	Cash Payment	Price/ Acre	Rental	Oil	Gas	Other



TRACT 44158 - St. Charles Parish, Louisiana

All of the lands now or formerly constituting the beds and bottoms of all water bodies of every nature and description as to which title is vested in the State of Louisiana, together with all islands arising therein and other lands formed by accretion or by reliction, where allowed by law, excepting tax adjudicated lands, and not presently under mineral lease on January 14, 2015, situated in St. Charles Parish, Louisiana, and more particularly described as follows: Beginning at a point having Coordinates of X = 2,316,343.70 and Y = 397,120.00; thence North 76 degrees 09 minutes 16 seconds East 15,975.47 feet to a point having Coordinates of X = 2,331,855.00 and Y = 400,943.00; thence South 2,895.93 feet to a point on the boundary of State Lease No. 21300 having Coordinates of X = 2,331,855.00 and Y = 398,047.07; thence along the boundary of said State Lease No. 21300 the following courses: South 89 degrees 41 minutes 37 seconds West 629.86 feet to a point having Coordinates of X = 2,331,225.15 and Y = 398,043.70, South 61 degrees 03 minutes 58 seconds West 2,117.04 feet to a point having Coordinates of X = 2,329,372.36 and Y = 397,019.48, South 55 degrees 36 minutes 59 seconds West 1,132.71 feet to a point having Coordinates of X = 2,328,437.56 and Y = 396,379.80 and South 51 degrees 09 minutes 17 seconds West 2,037.12 feet to its Southwest corner and the Northwest corner of State Lease No. 21299 having Coordinates of X = 2,326,850.97 and Y = 395,102.08; thence along the boundary of said State Lease No. 21299 the following courses: South 51 degrees 54 minutes 14 seconds West 986.74 feet to a point having Coordinates of X = 2,326,074.43 and Y = 394,493.28, South 49 degrees 22 minutes 50 seconds West 1,270.15 feet to a point having Coordinates of X = 2,325,110.33 and Y = 393,666.36, East 4,440.09 feet to a point having Coordinates of X = 2,329,550.42 and Y = 393,666.36 and North 68 degrees 31 minutes 50 seconds East 1,561.50 feet to the Westernmost corner of State Lease No. 21409 having Coordinates of X = 2,331,003.57 and Y = 394,237.88; thence North 89 degrees 33 minutes 24 seconds East 851.46 feet along the boundary of said State Lease No. 21409 to a point having Coordinates of X = 2,331,855.00 and Y = 394,244.47; thence South 8,878.47 feet to the Northeast corner of State Lease No. 20853 having Coordinates of X = 2,331,855.00 and Y = 385,366.00; thence along the boundary of said State Lease No. 20853 the following courses: West 2,213.00 feet to a point having Coordinates of X = 2,329,642.00 and Y = 385,366.00 and South 2,268.51 feet to its Southwest corner and a point on the boundary of State Lease No. 20626 having Coordinates of X = 2,329,642.00 and Y = 383,097.49; thence South 80 degrees 42 minutes 32 seconds West 2,400.46 feet along the boundary of said State Lease No. 20626 to the Southeast corner of State Lease No. 21281 having Coordinates of X = 2,327,273.03 and Y = 382,709.93; thence North 1,072.07 feet along the boundary of said State Lease No. 21281 to its Northeast corner and the Southeast corner of State Lease No. 21280 having Coordinates of X = 2,327,273.03 and Y = 383,782.00; thence along the boundary of said State Lease No. 21280 the following courses: North 2,710.34 feet to a point having Coordinates of X = 2,327,273.03 and Y = 386,492.34 and West 4,500.62 feet to its Northwest corner and the Northeast corner of State Lease No. 21408 having Coordinates of X = 2,322,772.41 and Y = 386,492.34;

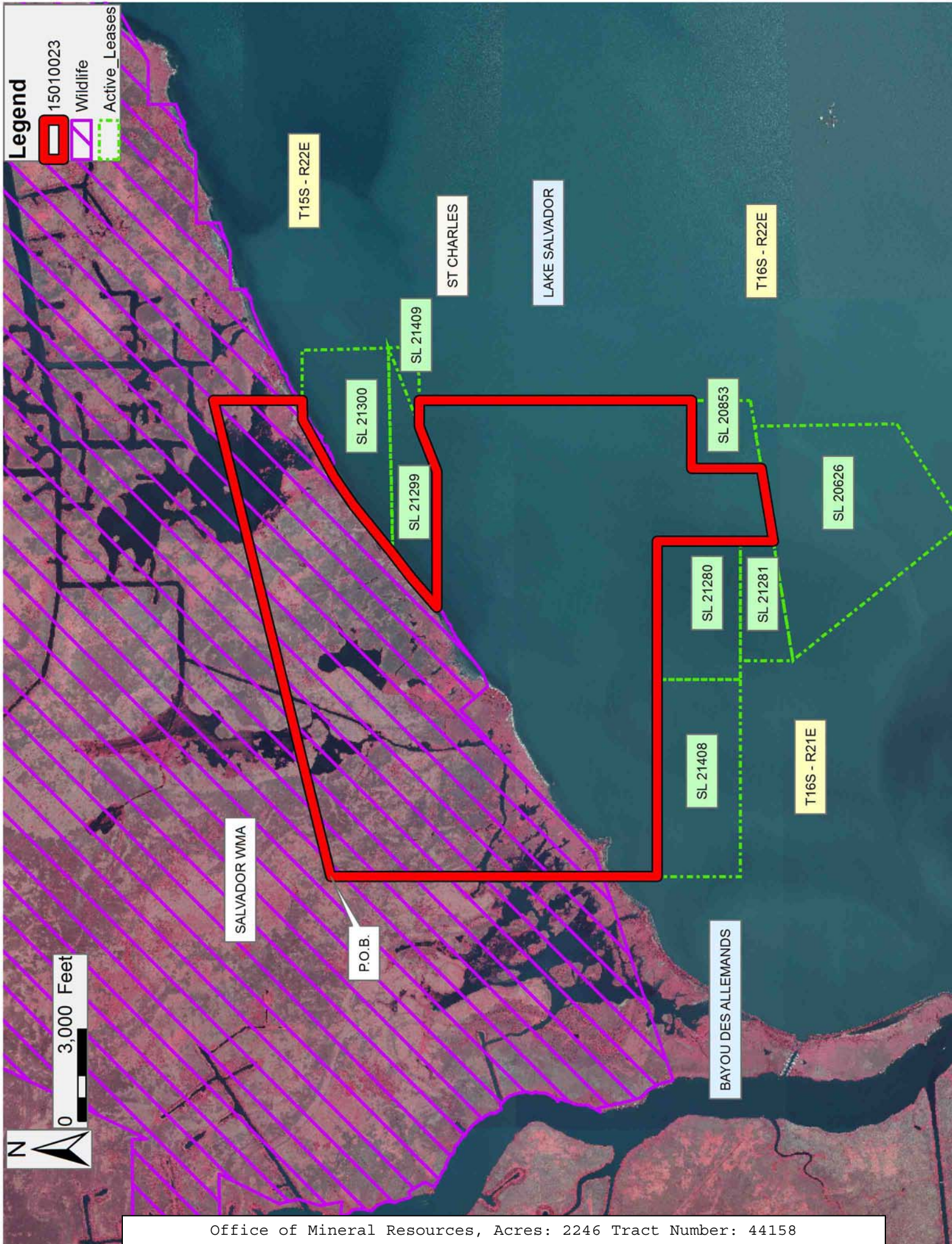
thence West 6,428.71 feet along the boundary of said State Lease No. 21408 to its Northwest corner having Coordinates of X = 2,316,343.70 and Y = 386,492.34; thence North 10,627.66 feet to the point of beginning, **LESS AND EXCEPT** that portion, if any, of the above described tract that may lie inside of the boundary of the Salvador Wildlife Management Area, containing approximately **2,246 acres**, all as more particularly outlined on a plat on file in the Office of Mineral Resources, Department of Natural Resources. All bearings, distances and coordinates are based on Louisiana Coordinate System of 1927, (North or South Zone), where applicable.

NOTE: The above description of the Tract nominated for lease has been provided and corrected, where required, exclusively by the nomination party. Any mineral lease selected from this Tract and awarded by the Louisiana State Mineral and Energy Board shall be without warranty of any kind, either express, implied, or statutory, including, but not limited to, the implied warranties of merchantability and fitness for a particular purpose. Should the mineral lease awarded by the Louisiana State Mineral and Energy Board be subsequently modified, cancelled or abrogated due to the existence of conflicting leases, operating agreements, private claims or other future obligations or conditions which may affect all or any portion of the leased Tract, it shall not relieve the Lessee of the obligation to pay any bonus due thereon to the Louisiana State Mineral and Energy Board, nor shall the Louisiana State Mineral and Energy Board be obligated to refund any consideration paid by the Lessor prior to such modification, cancellation, or abrogation, including, but not limited to, bonuses, rentals and royalties.

NOTE: The State of Louisiana does hereby reserve, and this lease shall be subject to, the imprescriptible right of surface use in the nature of a servitude in favor of the Department of Natural Resources, including its Offices and Commissions, for the sole purpose of implementing, constructing, servicing and maintaining approved coastal zone management and/or restoration projects. Utilization of any and all rights derived under this lease by the mineral lessee, its agents, successors or assigns, shall not interfere with nor hinder the reasonable surface use by the Department of Natural Resources, its Offices or Commissions, as herein above reserved.

Bidder	Cash Payment	Price/ Acre	Rental	Oil	Gas	Other

Applicant: LARRY S. MINTER, INC.



TRACT 44159 - Lafourche and St. Charles Parishes, Louisiana

All of the lands now or formerly constituting the beds and bottoms of all water bodies of every nature and description as to which title is vested in the State of Louisiana, together with all islands arising therein and other lands formed by accretion or by reliction, where allowed by law, excepting tax adjudicated lands, and not presently under mineral lease on January 14, 2015, situated in Lafourche and St. Charles Parishes, Louisiana, and more particularly described as follows: Beginning at a point having Coordinates of X = 2,300,697.00 and Y = 397,120.00; thence East 15,646.70 feet to a point having Coordinates of X = 2,316,343.70 and Y = 397,120.00; thence South 10,627.66 feet to the Northwest corner of State Lease No. 21408 having Coordinates of X = 2,316,343.70 and Y = 386,492.34; thence South 2,710.34 feet to along the boundary of said State Lease No. 21408 to its Southwest corner and a point on the boundary of State Lease No. 21282 having Coordinates of X = 2,316,343.70 and Y = 383,782.00; thence West 3,386.07 feet along the boundary of said State Lease No. 21282 to its Northwest corner and a point on the boundary of State Lease No. 21302 having Coordinates of X = 2,312,957.63 and Y = 383,782.00; thence North 316.54 feet along the boundary of said State Lease No. 21302 to its Northeast corner and the Southeast corner of State Lease No. 21301 having Coordinates of X = 2,312,957.63 and Y = 384,098.54; thence along the boundary of said State Lease No. 21301 the following courses: North 1,371.46 feet to a point having Coordinates of X = 2,312,957.63 and Y = 385,470.00, West 3,081.63 feet to a point having Coordinates of X = 2,309,876.00 and Y = 385,470.00 and South 1,371.46 feet to its Southwest corner and the Northwest corner of said State Lease No. 21302 having Coordinates of X = 2,309,876.00 and Y = 384,098.54; thence South 2,532.79 feet along the boundary of said State Lease No. 21302 to its Southwest corner and a point on the boundary of State Lease No. 21303 having Coordinates of X = 2,309,876.00 and Y = 381,565.75; thence along the boundary of said State Lease No. 21303 the following courses: West 183.00 feet to a point having Coordinates of X = 2,309,693.00 and Y = 381,565.75 and South 735.75 feet to a point having Coordinates of X = 2,309,693.00 and Y = 380,830.00; thence West 5,349.30 feet to a point having Coordinates of X = 2,304,343.70 and Y = 380,830.00; thence North 10,012.00 feet to a point having Coordinates of X = 2,304,343.70 and Y = 390,842.00; thence West 3,646.70 feet to a point having Coordinates of X = 2,300,697.00 and Y = 390,842.00; thence North 6,278.00 feet to the point of beginning, **LESS AND EXCEPT** that portion, if any, of the above described tract that may lie inside of the boundary of the Salvador Wildlife Management Area, containing approximately **796 acres**, all as more particularly outlined on a plat on file in the Office of Mineral Resources, Department of Natural Resources. All bearings, distances and coordinates are based on Louisiana Coordinate System of 1927, (North or South Zone), where applicable.

NOTE: The above description of the Tract nominated for lease has been provided and corrected, where required, exclusively by the nomination party. Any mineral lease selected from this Tract and awarded by the

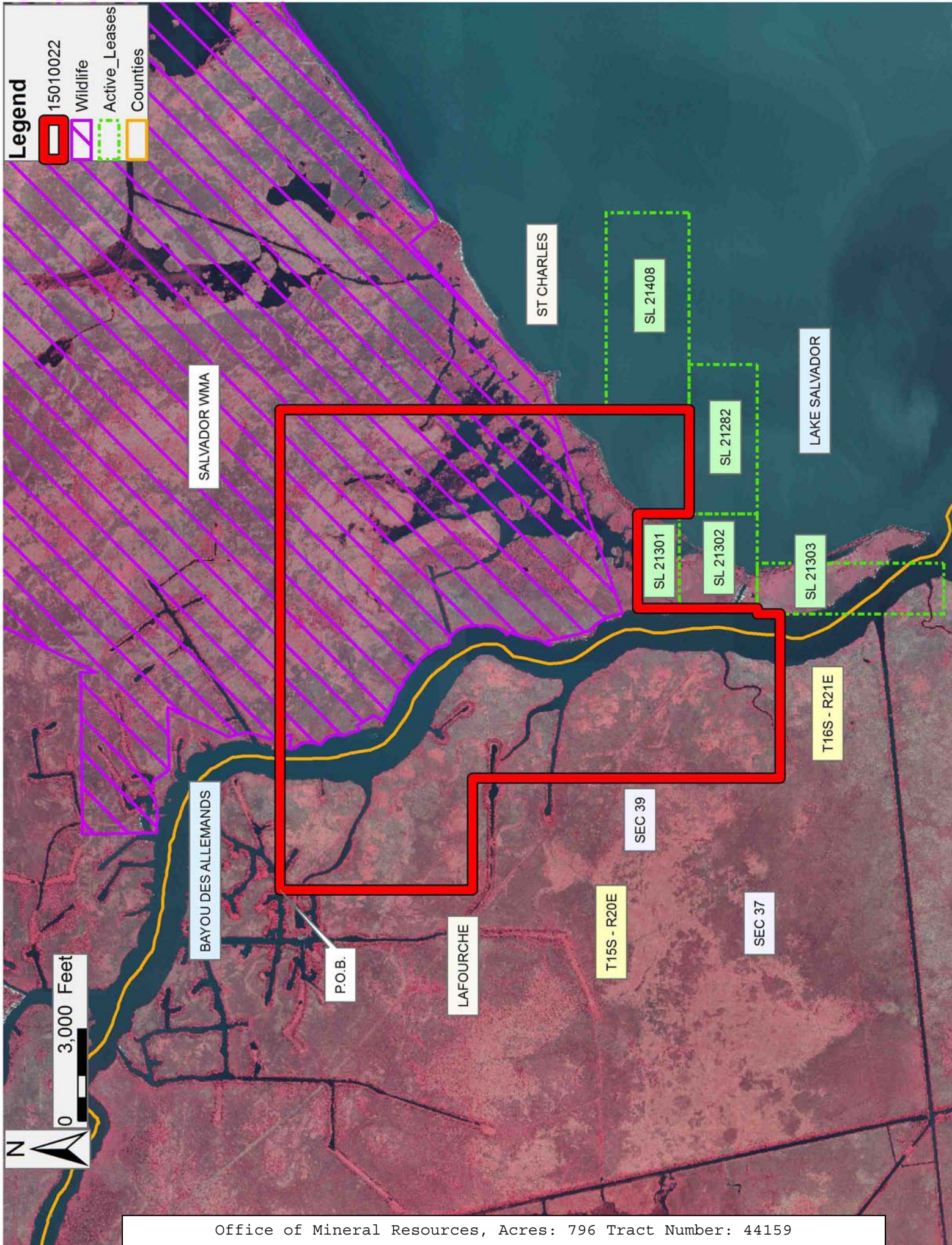
Louisiana State Mineral and Energy Board shall be without warranty of any kind, either express, implied, or statutory, including, but not limited to, the implied warranties of merchantability and fitness for a particular purpose. Should the mineral lease awarded by the Louisiana State Mineral and Energy Board be subsequently modified, cancelled or abrogated due to the existence of conflicting leases, operating agreements, private claims or other future obligations or conditions which may affect all or any portion of the leased Tract, it shall not relieve the Lessee of the obligation to pay any bonus due thereon to the Louisiana State Mineral and Energy Board, nor shall the Louisiana State Mineral and Energy Board be obligated to refund any consideration paid by the Lessor prior to such modification, cancellation, or abrogation, including, but not limited to, bonuses, rentals and royalties.

NOTE: The State of Louisiana does hereby reserve, and this lease shall be subject to, the imprescriptible right of surface use in the nature of a servitude in favor of the Department of Natural Resources, including its Offices and Commissions, for the sole purpose of implementing, constructing, servicing and maintaining approved coastal zone management and/or restoration projects. Utilization of any and all rights derived under this lease by the mineral lessee, its agents, successors or assigns, shall not interfere with nor hinder the reasonable surface use by the Department of Natural Resources, its Offices or Commissions, as herein above reserved.

NOTE: A portion of this tract is located on or adjacent to a Louisiana designated Natural and Scenic River. The applicant must obtain authorization from the Louisiana Department of Wildlife and Fisheries, Scenic Rivers Program prior to initiating any activities within or adjacent to the river, including, but not limited to, crossings by roads and pipelines, well sites, production facilities and water withdrawals.

Applicant: LARRY S. MINTER, INC.

Bidder	Cash Payment	Price/ Acre	Rental	Oil	Gas	Other



TRACT 44160 - St. Charles Parish, Louisiana

All of the lands now or formerly constituting the beds and bottoms of all water bodies of every nature and description as to which title is vested in the State of Louisiana, together with all islands arising therein and other lands formed by accretion or by reliction, where allowed by law, excepting tax adjudicated lands, and not presently under mineral lease on January 14, 2015, situated in St. Charles Parish, Louisiana, and more particularly described as follows: Beginning at a point having Coordinates of X = 2,331,855.00 and Y = 392,119.00; thence East 9,024.82 feet to a point having Coordinates of X = 2,340,879.82 and Y = 392,119.00; thence South 7,935.58 feet to the Northernmost Northwest corner of State Lease No. 19232 having Coordinates of X = 2,340,879.82 and Y = 384,183.42; thence along the boundary of said State Lease No. 19232 the following courses: South 1,676.60 feet to a point having Coordinates of X = 2,340,879.82 and Y = 382,506.82, West 2,744.82 feet to a point having Coordinates of X = 2,338,135.00 and Y = 382,506.82 and South 2,841.59 feet to its Southwest corner and the Northwest corner of State Lease No. 19206 having Coordinates of X = 2,338,135.00 and Y = 379,665.23; thence South 1,115.23 feet along the boundary of said State Lease No. 19206 to the Northeast corner of State Lease No. 21341 having Coordinates of X = 2,338,135.00 and Y = 378,550.00; thence West 313.56 feet along the boundary of said State Lease No. 21341 to its Northwest corner and the Northeast corner of State Lease No. 20851 having Coordinates of X = 2,337,821.44 and Y = 378,550.00; thence West 2,623.62 feet along the boundary of said State Lease No. 20851 to its Northwest corner and a point on the boundary of State Lease No. 19201 having Coordinates of X = 2,335,197.82 and Y = 378,550.00; thence along the boundary of said State Lease No. 19201 the following courses: North 20 degrees 42 minutes 16 seconds West 1,880.44 feet to a point having Coordinates of X = 2,334,533.00 and Y = 380,309.00 and South 71 degrees 21 minutes 39 seconds West 1,720.23 feet to the Northernmost Southeast corner of State Lease No. 20852 having Coordinates of X = 2,332,903.00 and Y = 379,759.20; thence along the boundary of said State Lease No. 20852 the following courses: North 743.80 feet to a point having Coordinates of X = 2,332,903.00 and Y = 380,503.00 and West 1,838.95 feet to its Northwest corner and a point on the boundary of State Lease No. 20626 having Coordinates of X = 2,331,064.05 and Y = 380,503.00; thence North 00 degrees 52 minutes 42 seconds West 2,820.39 feet along the boundary of said State Lease No. 20626 to its Northeast corner and a point on the boundary of State Lease No. 20853 having Coordinates of X = 2,331,020.82 and Y = 383,323.06; thence along the boundary of said State Lease No. 20853 the following courses: North 80 degrees 42 minutes 32 seconds East 845.27 feet to a point having Coordinates of X = 2,331,855.00 and Y = 383,459.53 and North 1,906.47 feet to its Northeast corner having Coordinates of X = 2,331,855.00 and Y = 385,366.00; thence North 6,753.00 feet to the point of beginning, containing approximately **2,499.88 acres**, all as more particularly outlined on a plat on file in the Office of Mineral Resources, Department of Natural Resources. All bearings, distances and

coordinates are based on Louisiana Coordinate System of 1927, (North or South Zone), where applicable.

NOTE: The above description of the Tract nominated for lease has been provided and corrected, where required, exclusively by the nomination party. Any mineral lease selected from this Tract and awarded by the Louisiana State Mineral and Energy Board shall be without warranty of any kind, either express, implied, or statutory, including, but not limited to, the implied warranties of merchantability and fitness for a particular purpose. Should the mineral lease awarded by the Louisiana State Mineral and Energy Board be subsequently modified, cancelled or abrogated due to the existence of conflicting leases, operating agreements, private claims or other future obligations or conditions which may affect all or any portion of the leased Tract, it shall not relieve the Lessee of the obligation to pay any bonus due thereon to the Louisiana State Mineral and Energy Board, nor shall the Louisiana State Mineral and Energy Board be obligated to refund any consideration paid by the Lessor prior to such modification, cancellation, or abrogation, including, but not limited to, bonuses, rentals and royalties.

NOTE: The State of Louisiana does hereby reserve, and this lease shall be subject to, the imprescriptible right of surface use in the nature of a servitude in favor of the Department of Natural Resources, including its Offices and Commissions, for the sole purpose of implementing, constructing, servicing and maintaining approved coastal zone management and/or restoration projects. Utilization of any and all rights derived under this lease by the mineral lessee, its agents, successors or assigns, shall not interfere with nor hinder the reasonable surface use by the Department of Natural Resources, its Offices or Commissions, as herein above reserved.

Applicant: LARRY S. MINTER, INC.

Bidder	Cash Payment	Price/ Acre	Rental	Oil	Gas	Other

Legend

15010025

Active_Leases

0

2,000 Feet

N

ST CHARLES

P.O.B.

LAKE SALVADOR

T15S - R21E

T15S - R22E

T16S - R21E

T16S - R22E

SL 20853

SL 20626

SL 20852

SL 19201

SL 20851

SL 21341

SL 19206

SL 19232

Office of Mineral Resources, Acres: 2499.88 Tract Number: 44160

TRACT 44161 - Assumption and St. Mary Parishes, Louisiana

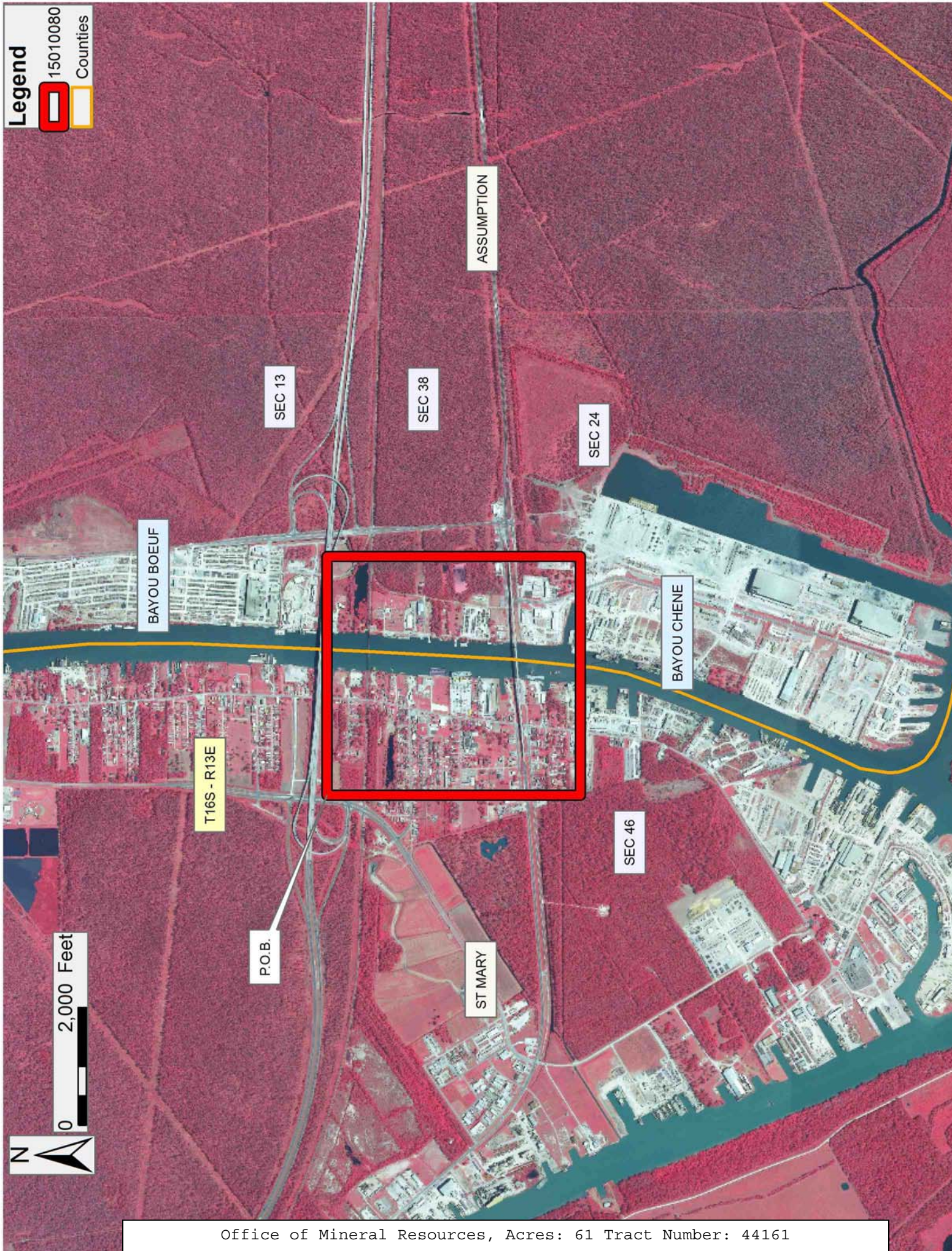
All of the lands now or formerly constituting the beds and bottoms of all water bodies of every nature and description as to which title is vested in the State of Louisiana, together with all islands arising therein and other lands formed by accretion or by reliction, where allowed by law, excepting tax adjudicated lands, and not presently under mineral lease on January 14, 2015, situated in Assumption and St. Mary Parishes, Louisiana, and more particularly described as follows: Beginning at a point having Coordinates of X = 2,072,003.34 and Y = 365,000.00; thence East 4,054.69 feet to a point having Coordinates of X = 2,076,058.03 and Y = 365,000.00; thence South 4,300.00 feet to a point having Coordinates of X = 2,076,058.03 and Y = 360,700.00; thence West 4,054.69 feet to a point having Coordinates of X = 2,072,003.34 and Y = 360,700.00; thence North 4,300.00 feet to the point of beginning, containing approximately **61 acres**, all as more particularly outlined on a plat on file in the Office of Mineral Resources, Department of Natural Resources. All bearings, distances and coordinates are based on Louisiana Coordinate System of 1927, (North or South Zone), where applicable.

NOTE: The above description of the Tract nominated for lease has been provided and corrected, where required, exclusively by the nomination party. Any mineral lease selected from this Tract and awarded by the Louisiana State Mineral and Energy Board shall be without warranty of any kind, either express, implied, or statutory, including, but not limited to, the implied warranties of merchantability and fitness for a particular purpose. Should the mineral lease awarded by the Louisiana State Mineral and Energy Board be subsequently modified, cancelled or abrogated due to the existence of conflicting leases, operating agreements, private claims or other future obligations or conditions which may affect all or any portion of the leased Tract, it shall not relieve the Lessee of the obligation to pay any bonus due thereon to the Louisiana State Mineral and Energy Board, nor shall the Louisiana State Mineral and Energy Board be obligated to refund any consideration paid by the Lessor prior to such modification, cancellation, or abrogation, including, but not limited to, bonuses, rentals and royalties.

NOTE: The State of Louisiana does hereby reserve, and this lease shall be subject to, the imprescriptible right of surface use in the nature of a servitude in favor of the Department of Natural Resources, including its Offices and Commissions, for the sole purpose of implementing, constructing, servicing and maintaining approved coastal zone management and/or restoration projects. Utilization of any and all rights derived under this lease by the mineral lessee, its agents, successors or assigns, shall not interfere with nor hinder the reasonable surface use by the Department of Natural Resources, its Offices or Commissions, as herein above reserved.

Applicant: THEOPHILUS OIL, GAS & LAND SERVICES, LLC

Bidder	Cash Payment	Price/ Acre	Rental	Oil	Gas	Other



TRACT 44162 - St. Mary Parish, Louisiana

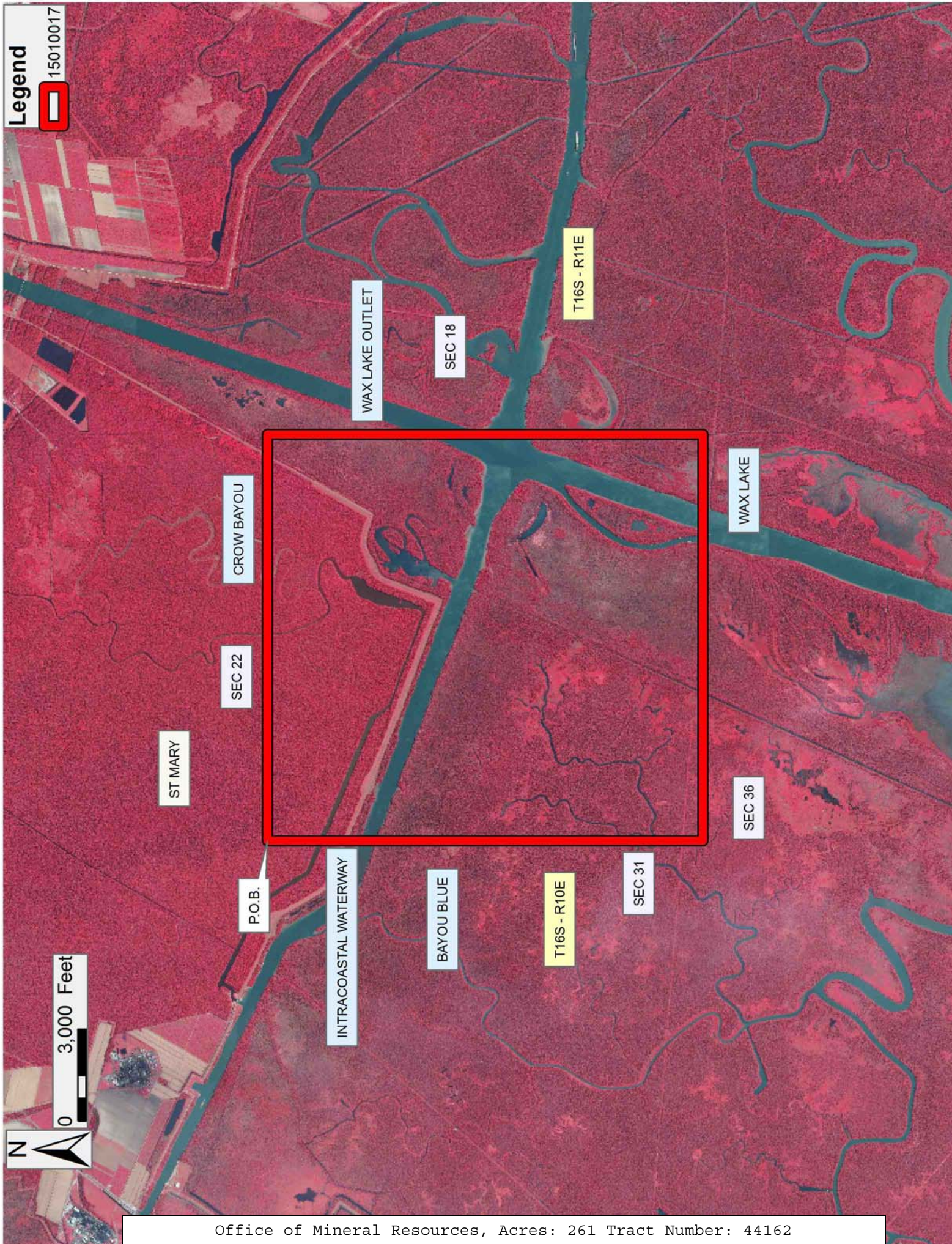
All of the lands now or formerly constituting the beds and bottoms of all water bodies of every nature and description as to which title is vested in the State of Louisiana, together with all islands arising therein and other lands formed by accretion or by reliction, where allowed by law, excepting tax adjudicated lands, and not presently under mineral lease on January 14, 2015, situated in St. Mary Parish, Louisiana, and more particularly described as follows: Beginning a point having Coordinates of X = 1,968,405.00 and Y = 364,688.00; thence East 13,244.00 feet to a point having Coordinates of X = 1,981,649.00 and Y = 364,688.00; thence South 14,184.00 feet to a point having Coordinates of X = 1,981,649.00 and Y = 350,504.00; thence West 13,244.00 feet to a point having Coordinates of X = 1,968,405.00 and Y = 350,504.00; thence North 14,184.00 feet to the point of beginning, containing approximately **261 acres**, all as more particularly outlined on a plat on file in the Office of Mineral Resources, Department of Natural Resources. All bearings, distances and coordinates are based on Louisiana Coordinate System of 1927, (North or South Zone), where applicable.

NOTE: The above description of the Tract nominated for lease has been provided and corrected, where required, exclusively by the nomination party. Any mineral lease selected from this Tract and awarded by the Louisiana State Mineral and Energy Board shall be without warranty of any kind, either express, implied, or statutory, including, but not limited to, the implied warranties of merchantability and fitness for a particular purpose. Should the mineral lease awarded by the Louisiana State Mineral and Energy Board be subsequently modified, cancelled or abrogated due to the existence of conflicting leases, operating agreements, private claims or other future obligations or conditions which may affect all or any portion of the leased Tract, it shall not relieve the Lessee of the obligation to pay any bonus due thereon to the Louisiana State Mineral and Energy Board, nor shall the Louisiana State Mineral and Energy Board be obligated to refund any consideration paid by the Lessor prior to such modification, cancellation, or abrogation, including, but not limited to, bonuses, rentals and royalties.

NOTE: The State of Louisiana does hereby reserve, and this lease shall be subject to, the imprescriptible right of surface use in the nature of a servitude in favor of the Department of Natural Resources, including its Offices and Commissions, for the sole purpose of implementing, constructing, servicing and maintaining approved coastal zone management and/or restoration projects. Utilization of any and all rights derived under this lease by the mineral lessee, its agents, successors or assigns, shall not interfere with nor hinder the reasonable surface use by the Department of Natural Resources, its Offices or Commissions, as herein above reserved.

Applicant: HAROLD J. ANDERSON, INC.

Bidder	Cash Payment	Price/ Acre	Rental	Oil	Gas	Other



TRACT 44163 - St. Mary Parish, Louisiana

All of the lands now or formerly constituting the beds and bottoms of all water bodies of every nature and description as to which title is vested in the State of Louisiana, together with all islands arising therein and other lands formed by accretion or by reliction, where allowed by law, excepting tax adjudicated lands, and not presently under mineral lease on January 14, 2015, situated in St. Mary Parish, Louisiana, and more particularly described as follows: Beginning at a point having Coordinates of X = 1,956,667.00 and Y = 364,688.00; thence East 11,738.00 feet to a point having Coordinates of X = 1,968,405.00 and Y = 364,688.00; thence South 14,184.00 feet to a point having Coordinates of X = 1,968,405.00 and Y = 350,504.00; thence West 11,738.00 feet to a point having Coordinates of X = 1,956,667.00 and Y = 350,504.00; thence North 14,184.00 feet to the point of beginning, **LESS AND EXCEPT** any right, title, and interest in lands owned by and not under lease from the State of Louisiana, on behalf of the St. Mary Parish School Board, situated in Section 16, Township 16 South, Range 10 East, St. Mary Parish, Louisiana, contained within the above described tract, containing approximately **63 acres**, all as more particularly outlined on a plat on file in the Office of Mineral Resources, Department of Natural Resources. All bearings, distances and coordinates are based on Louisiana Coordinate System of 1927, (North or South Zone), where applicable.

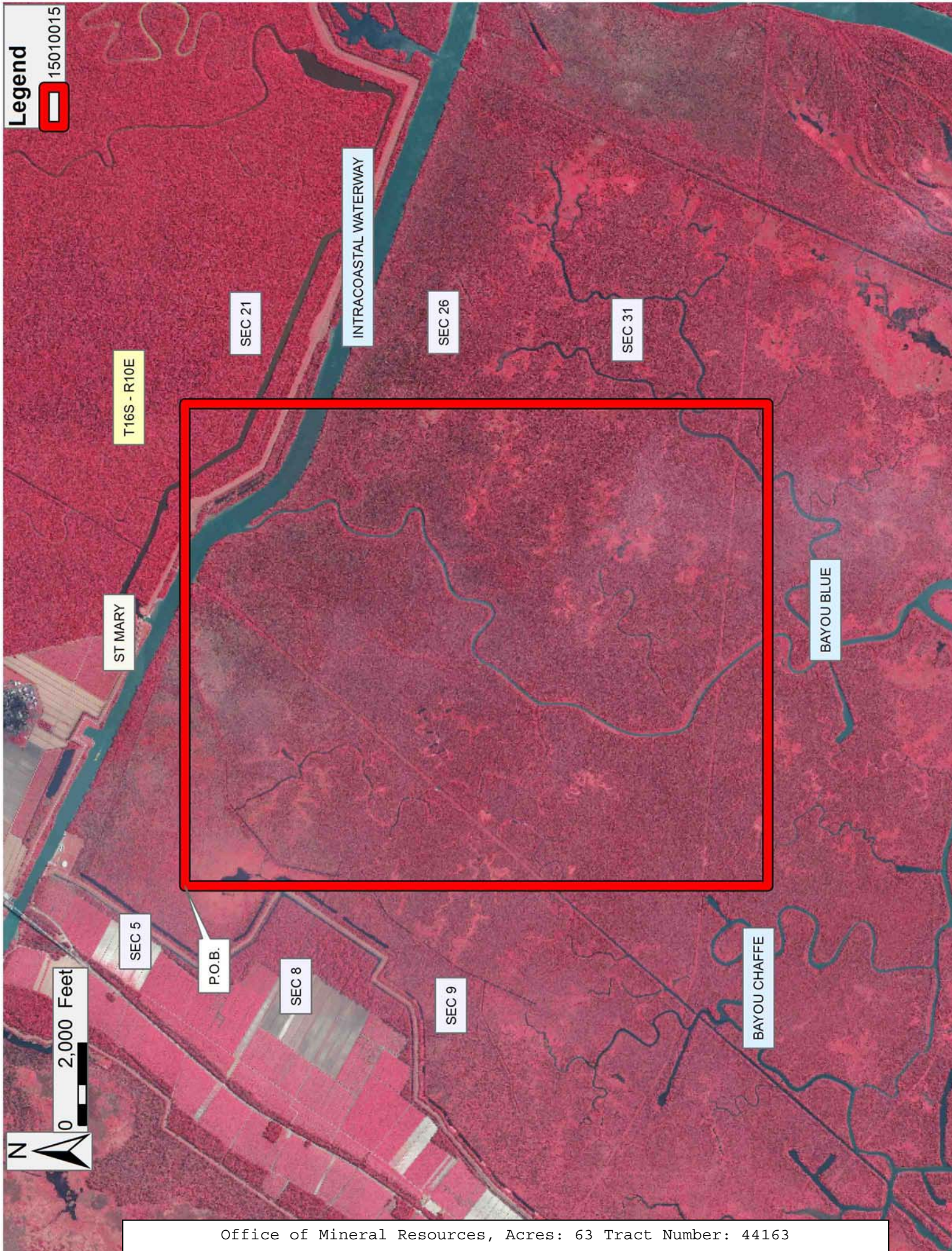
NOTE: The above description of the Tract nominated for lease has been provided and corrected, where required, exclusively by the nomination party. Any mineral lease selected from this Tract and awarded by the Louisiana State Mineral and Energy Board shall be without warranty of any kind, either express, implied, or statutory, including, but not limited to, the implied warranties of merchantability and fitness for a particular purpose. Should the mineral lease awarded by the Louisiana State Mineral and Energy Board be subsequently modified, cancelled or abrogated due to the existence of conflicting leases, operating agreements, private claims or other future obligations or conditions which may affect all or any portion of the leased Tract, it shall not relieve the Lessee of the obligation to pay any bonus due thereon to the Louisiana State Mineral and Energy Board, nor shall the Louisiana State Mineral and Energy Board be obligated to refund any consideration paid by the Lessor prior to such modification, cancellation, or abrogation, including, but not limited to, bonuses, rentals and royalties.

NOTE: The State of Louisiana does hereby reserve, and this lease shall be subject to, the imprescriptible right of surface use in the nature of a servitude in favor of the Department of Natural Resources, including its Offices and Commissions, for the sole purpose of implementing, constructing, servicing and maintaining approved coastal zone management and/or restoration projects. Utilization of any and all rights derived under this lease by the mineral lessee, its agents, successors or assigns, shall not interfere with nor hinder the reasonable surface use by the

Department of Natural Resources, its Offices or Commissions, as herein above reserved.

Applicant: HAROLD J. ANDERSON, INC.

Bidder	Cash Payment	Price/ Acre	Rental	Oil	Gas	Other



TRACT 44164 - St. Mary Parish, Louisiana

All of the lands now or formerly constituting the beds and bottoms of all water bodies of every nature and description as to which title is vested in the State of Louisiana, together with all islands arising therein and other lands formed by accretion or by reliction, where allowed by law, excepting tax adjudicated lands, and not presently under mineral lease on January 14, 2015, situated in St. Mary Parish, Louisiana, and more particularly described as follows: Beginning at a point having Coordinates of X = 1,944,929.00 and Y = 364,688.00; thence East 11,738.00 feet to a point having Coordinates of X = 1,956,667.00 and Y = 364,688.00; thence South 14,184.00 feet to a point having Coordinates of X = 1,956,667.00 and Y = 350,504.00; thence West approximately 3,874 feet to a point on the boundary of Operating Agreement A0241 having a Coordinate of Y = 350,504.00; thence Northerly and Southwesterly along the boundary of said Operating Agreement A0241 to the point of intersection with a line having a bearing of South 50 degrees 03 minutes 44 seconds East, commencing at a point having Coordinates of X = 1,949,667.86 and Y = 349,000.00; thence North 50 degrees 03 minutes 44 seconds West approximately 852 feet to a point having Coordinates of X = 1,949,667.86 and Y = 349,000.00; thence West 4,738.86 feet to a point having Coordinates of X = 1,944,929.00 and Y = 349,000.00; thence North 15,688.00 feet to the point of beginning, containing approximately **29 acres**, all as more particularly outlined on a plat on file in the Office of Mineral Resources, Department of Natural Resources. All bearings, distances and coordinates are based on Louisiana Coordinate System of 1927, (North or South Zone), where applicable.

NOTE: The above description of the Tract nominated for lease has been provided and corrected, where required, exclusively by the nomination party. Any mineral lease selected from this Tract and awarded by the Louisiana State Mineral and Energy Board shall be without warranty of any kind, either express, implied, or statutory, including, but not limited to, the implied warranties of merchantability and fitness for a particular purpose. Should the mineral lease awarded by the Louisiana State Mineral and Energy Board be subsequently modified, cancelled or abrogated due to the existence of conflicting leases, operating agreements, private claims or other future obligations or conditions which may affect all or any portion of the leased Tract, it shall not relieve the Lessee of the obligation to pay any bonus due thereon to the Louisiana State Mineral and Energy Board, nor shall the Louisiana State Mineral and Energy Board be obligated to refund any consideration paid by the Lessor prior to such modification, cancellation, or abrogation, including, but not limited to, bonuses, rentals and royalties.

NOTE: The State of Louisiana does hereby reserve, and this lease shall be subject to, the imprescriptible right of surface use in the nature of a servitude in favor of the Department of Natural Resources, including its Offices and Commissions, for the sole purpose of implementing, constructing, servicing and maintaining approved coastal zone management and/or restoration projects. Utilization of any and all rights derived

under this lease by the mineral lessee, its agents, successors or assigns, shall not interfere with nor hinder the reasonable surface use by the Department of Natural Resources, its Offices or Commissions, as herein above reserved.

Applicant: HAROLD J. ANDERSON, INC.

Bidder	Cash Payment	Price/ Acre	Rental	Oil	Gas	Other

