

TRACT 44145 - Livingston Parish, Louisiana

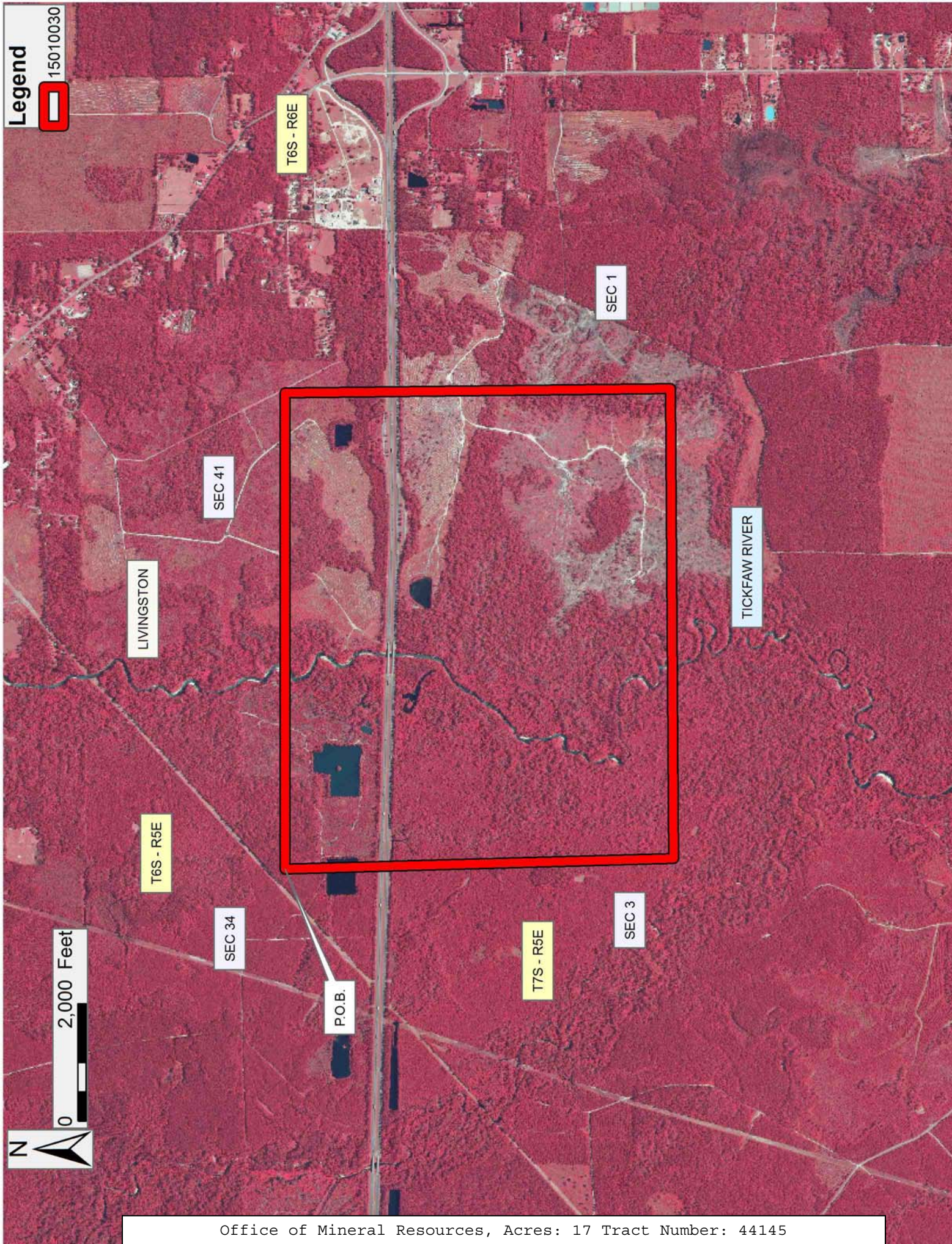
All of the lands now or formerly constituting the beds and bottoms of all water bodies of every nature and description as to which title is vested in the State of Louisiana, together with all islands arising therein and other lands formed by accretion or by reliction, where allowed by law, excepting tax adjudicated lands, and not presently under mineral lease on January 14, 2015, situated in Livingston Parish, Louisiana, and more particularly described as follows: Beginning at a point having Coordinates of X = 2,203,999.00 and Y = 659,874.58; thence East 8,110.53 feet to a point having Coordinates of X = 2,212,109.53 and Y = 659,874.58; thence South 00 degrees 39 minutes 25 seconds East 6,573.17 feet to a point having Coordinates of X = 2,212,184.91 and Y = 653,301.84; thence South 89 degrees 39 minutes 22 seconds West 8,008.42 feet to a point having Coordinates of X = 2,204,176.63 and Y = 653,253.78; thence North 01 degrees 32 minutes 13 seconds West 6,623.18 feet to the point of beginning, (This tract includes only waterbottoms claimed and owned by the state and specifically excludes any land which the state may claim or own and to which the mineral rights are vested in the state), containing approximately **17 acres**, all as more particularly outlined on a plat on file in the Office of Mineral Resources, Department of Natural Resources. All bearings, distances and coordinates are based on Louisiana Coordinate System of 1927, (North or South Zone), where applicable.

NOTE: The above description of the Tract nominated for lease has been provided and corrected, where required, exclusively by the nomination party. Any mineral lease selected from this Tract and awarded by the Louisiana State Mineral and Energy Board shall be without warranty of any kind, either express, implied, or statutory, including, but not limited to, the implied warranties of merchantability and fitness for a particular purpose. Should the mineral lease awarded by the Louisiana State Mineral and Energy Board be subsequently modified, cancelled or abrogated due to the existence of conflicting leases, operating agreements, private claims or other future obligations or conditions which may affect all or any portion of the leased Tract, it shall not relieve the Lessee of the obligation to pay any bonus due thereon to the Louisiana State Mineral and Energy Board, nor shall the Louisiana State Mineral and Energy Board be obligated to refund any consideration paid by the Lessor prior to such modification, cancellation, or abrogation, including, but not limited to, bonuses, rentals and royalties.

NOTE: A portion of this tract is located on or adjacent to a Louisiana designated Natural and Scenic River. The applicant must obtain authorization from the Louisiana Department of Wildlife and Fisheries, Scenic Rivers Program prior to initiating any activities within or adjacent to the river, including, but not limited to, crossings by roads and pipelines, well sites, production facilities and water withdrawals.

Bidder	Cash Payment	Price/ Acre	Rental	Oil	Gas	Other
--------	-----------------	----------------	--------	-----	-----	-------

Applicant: CULLUM LAND SERVICES



TRACT 44146 - Livingston Parish, Louisiana

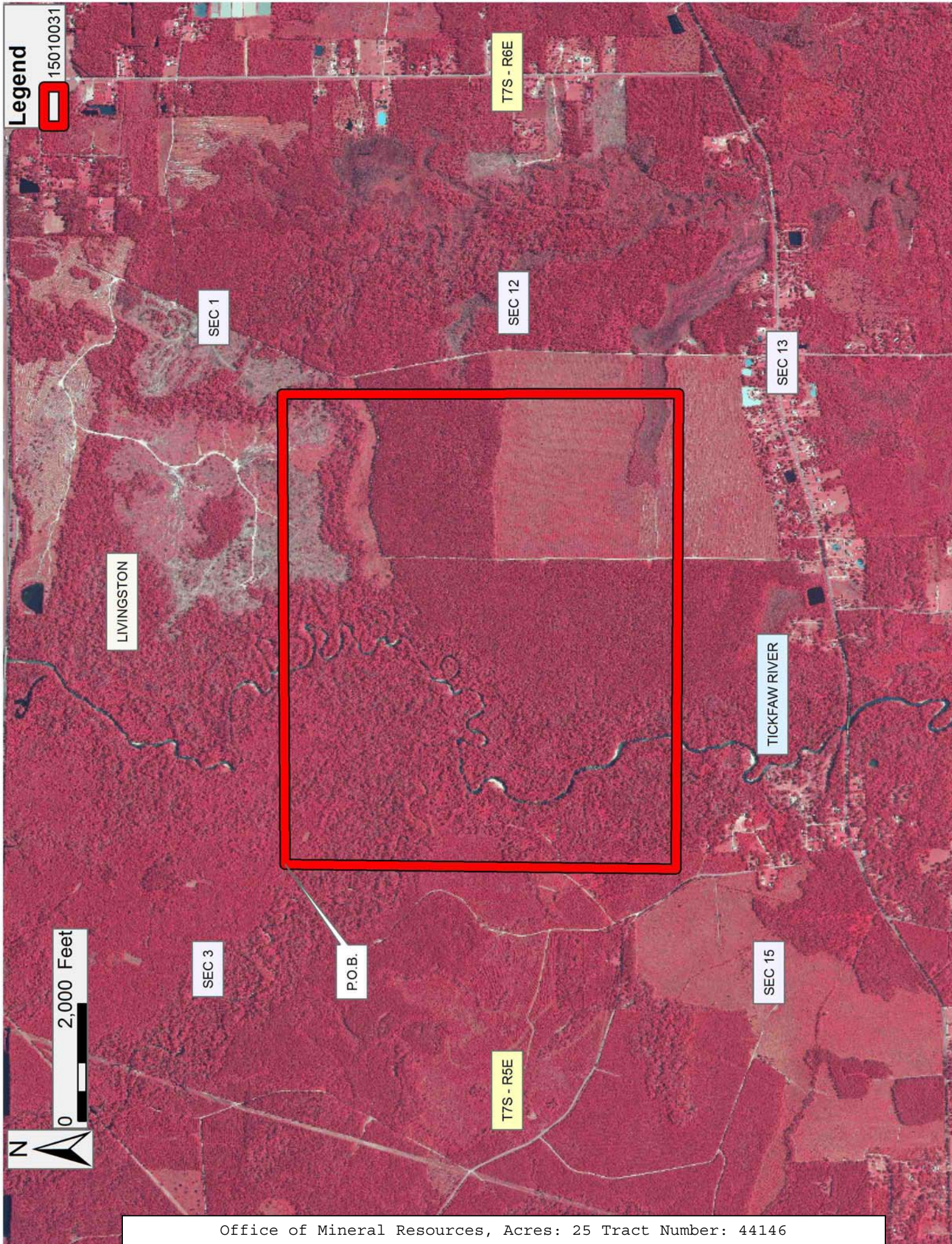
All of the lands now or formerly constituting the beds and bottoms of all water bodies of every nature and description as to which title is vested in the State of Louisiana, together with all islands arising therein and other lands formed by accretion or by reliction, where allowed by law, excepting tax adjudicated lands, and not presently under mineral lease on January 14, 2015, situated in Livingston Parish, Louisiana, and more particularly described as follows: Beginning at a point having Coordinates of X = 2,204,176.63 and Y = 653,253.78; thence North 89 degrees 39 minutes 22 seconds East 8,008.42 feet to a point having Coordinates of X = 2,212,184.91 and Y = 653,301.84; thence South 00 degrees 05 minutes 30 seconds East 6,753.07 feet to a point having Coordinates of X = 2,212,195.71 and Y = 646,548.78; thence North 89 degrees 39 minutes 02 seconds West 8,100.52 feet to a point having Coordinates of X = 2,204,095.34 and Y = 646,598.18; thence North 00 degrees 41 minutes 59 seconds East 6,656.09 feet to the point of beginning, containing approximately **25 acres**, all as more particularly outlined on a plat on file in the Office of Mineral Resources, Department of Natural Resources. All bearings, distances and coordinates are based on Louisiana Coordinate System of 1927, (North or South Zone), where applicable.

NOTE: The above description of the Tract nominated for lease has been provided and corrected, where required, exclusively by the nomination party. Any mineral lease selected from this Tract and awarded by the Louisiana State Mineral and Energy Board shall be without warranty of any kind, either express, implied, or statutory, including, but not limited to, the implied warranties of merchantability and fitness for a particular purpose. Should the mineral lease awarded by the Louisiana State Mineral and Energy Board be subsequently modified, cancelled or abrogated due to the existence of conflicting leases, operating agreements, private claims or other future obligations or conditions which may affect all or any portion of the leased Tract, it shall not relieve the Lessee of the obligation to pay any bonus due thereon to the Louisiana State Mineral and Energy Board, nor shall the Louisiana State Mineral and Energy Board be obligated to refund any consideration paid by the Lessor prior to such modification, cancellation, or abrogation, including, but not limited to, bonuses, rentals and royalties.

NOTE: A portion of this tract is located on or adjacent to a Louisiana designated Natural and Scenic River. The applicant must obtain authorization from the Louisiana Department of Wildlife and Fisheries, Scenic Rivers Program prior to initiating any activities within or adjacent to the river, including, but not limited to, crossings by roads and pipelines, well sites, production facilities and water withdrawals.

Applicant: CULLUM LAND SERVICES

Bidder	Cash Payment	Price/ Acre	Rental	Oil	Gas	Other



TRACT 44147 - Livingston Parish, Louisiana

All of the lands now or formerly constituting the beds and bottoms of all water bodies of every nature and description as to which title is vested in the State of Louisiana, together with all islands arising therein and other lands formed by accretion or by reliction, where allowed by law, excepting tax adjudicated lands, and not presently under mineral lease on January 14, 2015, situated in Livingston Parish, Louisiana, and more particularly described as follows: Beginning at a point having Coordinates of X = 2,204,095.34 and Y = 646,598.18; thence South 89 degrees 39 minutes 02 Seconds East 8,100.52 feet to a point having Coordinates of X = 2,212,195.71 and Y = 646,548.78; thence South 00 degrees 07 minutes 05 seconds West 6,407.51 feet to a point having Coordinates of X = 2,212,182.49 and Y = 640,141.28; thence South 89 degrees 39 minutes 11 seconds West 8,003.96 feet to a point having Coordinates of X = 2,204,178.68 and Y = 640,092.81; thence North 00 degrees 44 minutes 02 seconds West 6,505.91 feet to the point of beginning, containing approximately **21 acres**, all as more particularly outlined on a plat on file in the Office of Mineral Resources, Department of Natural Resources. All bearings, distances and coordinates are based on Louisiana Coordinate System of 1927, (North or South Zone), where applicable.

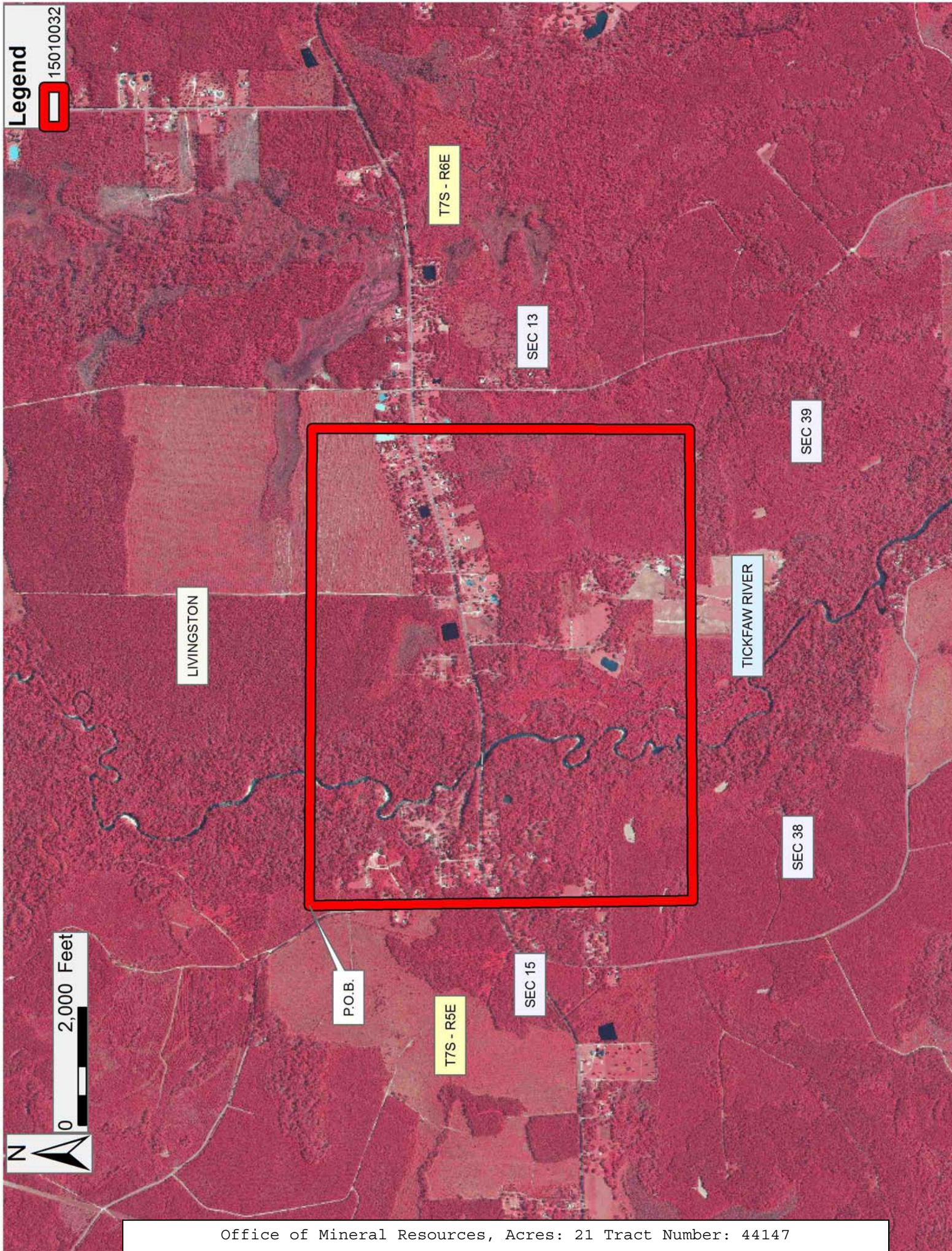
NOTE: The above description of the Tract nominated for lease has been provided and corrected, where required, exclusively by the nomination party. Any mineral lease selected from this Tract and awarded by the Louisiana State Mineral and Energy Board shall be without warranty of any kind, either express, implied, or statutory, including, but not limited to, the implied warranties of merchantability and fitness for a particular purpose. Should the mineral lease awarded by the Louisiana State Mineral and Energy Board be subsequently modified, cancelled or abrogated due to the existence of conflicting leases, operating agreements, private claims or other future obligations or conditions which may affect all or any portion of the leased Tract, it shall not relieve the Lessee of the obligation to pay any bonus due thereon to the Louisiana State Mineral and Energy Board, nor shall the Louisiana State Mineral and Energy Board be obligated to refund any consideration paid by the Lessor prior to such modification, cancellation, or abrogation, including, but not limited to, bonuses, rentals and royalties.

NOTE: The State of Louisiana does hereby reserve, and this lease shall be subject to, the imprescriptible right of surface use in the nature of a servitude in favor of the Department of Natural Resources, including its Offices and Commissions, for the sole purpose of implementing, constructing, servicing and maintaining approved coastal zone management and/or restoration projects. Utilization of any and all rights derived under this lease by the mineral lessee, its agents, successors or assigns, shall not interfere with nor hinder the reasonable surface use by the Department of Natural Resources, its Offices or Commissions, as herein above reserved.

NOTE: A portion of this tract is located on or adjacent to a Louisiana designated Natural and Scenic River. The applicant must obtain authorization from the Louisiana Department of Wildlife and Fisheries, Scenic Rivers Program prior to initiating any activities within or adjacent to the river, including, but not limited to, crossings by roads and pipelines, well sites, production facilities and water withdrawals.

Applicant: CULLUM LAND SERVICES

Bidder	Cash Payment	Price/ Acre	Rental	Oil	Gas	Other



TRACT 44148 - St. Bernard Parish, Louisiana

All of the lands now or formerly constituting the beds and bottoms of all water bodies of every nature and description as to which title is vested in the State of Louisiana, together with all islands arising therein and other lands formed by accretion or by reliction, where allowed by law, excepting tax adjudicated lands, and not presently under mineral lease on January 14, 2015, situated in St. Bernard Parish, Louisiana, and more particularly described as follows: Beginning at a point having Coordinates of X = 2,547,562.84 and Y = 504,358.87; Thence South 11,088.00 feet to a point having Coordinates of X = 2,547,562.84 and Y = 493,270.87; Thence West 9,821.00 feet to a point having Coordinates of X = 2,537,741.84 and Y = 493,270.87; Thence North 11,088.00 feet to a point having Coordinates of X = 2,537,741.84 and Y = 504,358.87; Thence East 9,821.00 feet to the Point of Beginning, containing approximately **2,499.89 acres**, all as more particularly outlined on a plat on file in the Office of Mineral Resources, Department of Natural Resources. All bearings, distances and coordinates are based on Louisiana Coordinate System of 1927, (North or South Zone), where applicable.

NOTE: The above description of the Tract nominated for lease has been provided and corrected, where required, exclusively by the nomination party. Any mineral lease selected from this Tract and awarded by the Louisiana State Mineral and Energy Board shall be without warranty of any kind, either express, implied, or statutory, including, but not limited to, the implied warranties of merchantability and fitness for a particular purpose. Should the mineral lease awarded by the Louisiana State Mineral and Energy Board be subsequently modified, cancelled or abrogated due to the existence of conflicting leases, operating agreements, private claims or other future obligations or conditions which may affect all or any portion of the leased Tract, it shall not relieve the Lessee of the obligation to pay any bonus due thereon to the Louisiana State Mineral and Energy Board, nor shall the Louisiana State Mineral and Energy Board be obligated to refund any consideration paid by the Lessor prior to such modification, cancellation, or abrogation, including, but not limited to, bonuses, rentals and royalties.

NOTE: The State of Louisiana does hereby reserve, and this lease shall be subject to, the imprescriptible right of surface use in the nature of a servitude in favor of the Department of Natural Resources, including its Offices and Commissions, for the sole purpose of implementing, constructing, servicing and maintaining approved coastal zone management and/or restoration projects. Utilization of any and all rights derived under this lease by the mineral lessee, its agents, successors or assigns, shall not interfere with nor hinder the reasonable surface use by the Department of Natural Resources, its Offices or Commissions, as herein above reserved.

NOTE: This tract is located in an area designated by the Louisiana Legislature or the Wildlife and Fisheries Commission as a Public Oyster

Seed Ground, Reservation, or area of Calcasieu or Sabine Lake. Proposed projects occurring in these areas will be evaluated on a case by case basis by Louisiana Department of Wildlife & Fisheries. Modifications to proposed project features including, but not limited to, access routes, well sites, flowlines, and appurtenant structures maybe required by the Louisiana Department of Wildlife and Fisheries. In addition, compensatory mitigation will be required to offset unavoidable habitat impacts.

Applicant: ROBERT A. SCHROEDER, INC.

Bidder	Cash Payment	Price/ Acre	Rental	Oil	Gas	Other

Legend

 15010002

P.O.B.



N

0 2,000 Feet



ST BERNARD

LAKE BORGNE

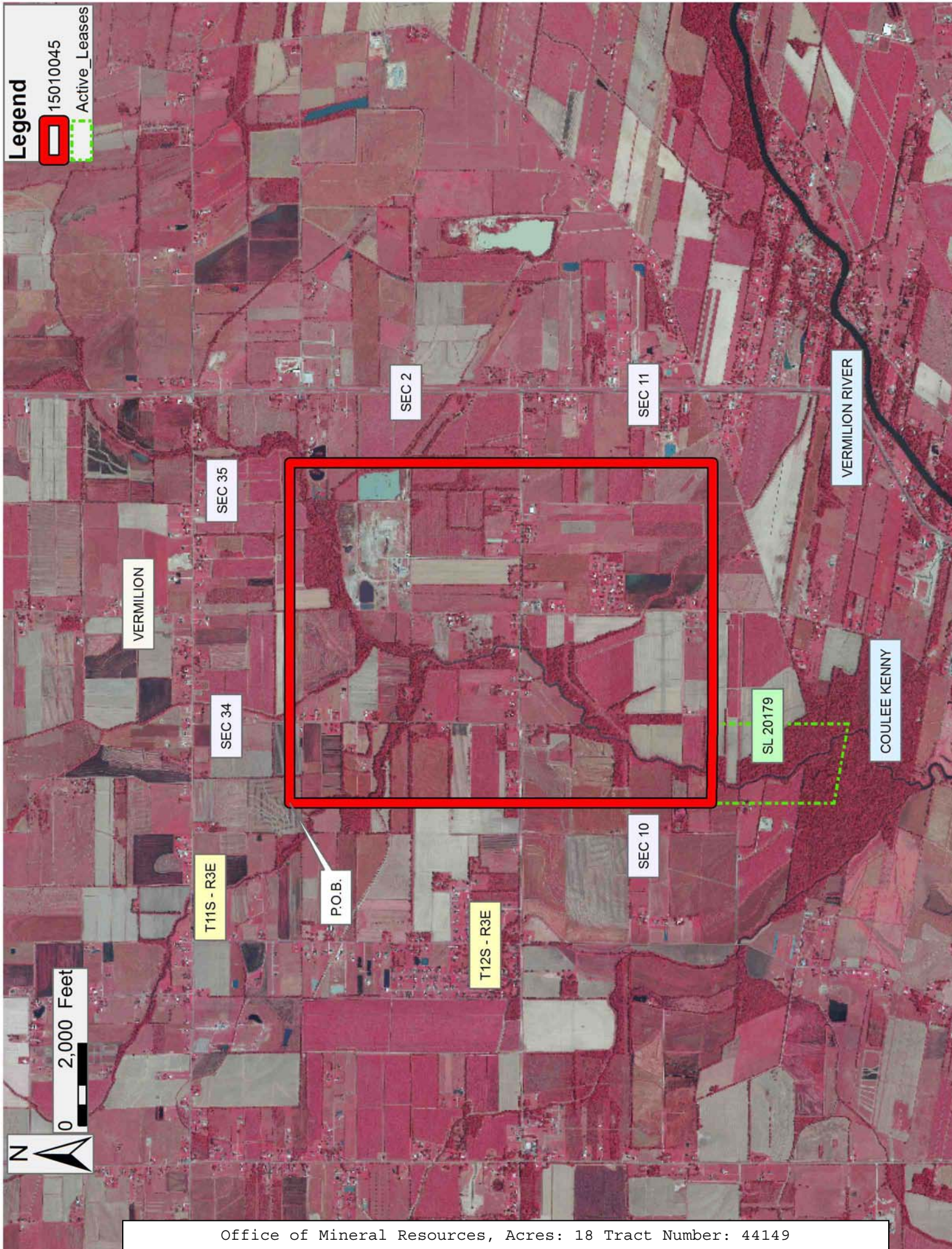
TRACT 44149 - Vermilion Parish, Louisiana

All of the lands now or formerly constituting the beds and bottoms of all water bodies of every nature and description as to which title is vested in the State of Louisiana, together with all islands arising therein and other lands formed by accretion or by reliction, where allowed by law, excepting tax adjudicated lands, and not presently under mineral lease on January 14, 2015, situated in Vermilion Parish, Louisiana, and more particularly described as follows: Beginning at a point having Coordinates of X = 1,739,881.87 and Y = 498,919.83; thence East 8,277.11 feet to a point having Coordinates of X = 1,748,158.98 and Y = 498,919.83; thence South 10,293.20 feet to a point having Coordinates of X = 1,748,158.98 and Y = 488,626.63; thence West 6,351.59 feet to a point on the Northeast corner of State Lease No. 20179 having Coordinates of X = 1,741,807.39 and Y = 488,626.63; thence North 89 degrees 06 minutes 57 seconds West 1,925.75 feet along Northern boundary of said State Lease No. 20179 to its Northwest corner having Coordinates of X = 1,739,881.87 and Y = 488,656.35; thence North 10,263.48 feet to the point of beginning, containing approximately **18 acres**, all as more particularly outlined on a plat on file in the Office of Mineral Resources, Department of Natural Resources. All bearings, distances and coordinates are based on Louisiana Coordinate System of 1927, (North or South Zone), where applicable.

NOTE: The above description of the Tract nominated for lease has been provided and corrected, where required, exclusively by the nomination party. Any mineral lease selected from this Tract and awarded by the Louisiana State Mineral and Energy Board shall be without warranty of any kind, either express, implied, or statutory, including, but not limited to, the implied warranties of merchantability and fitness for a particular purpose. Should the mineral lease awarded by the Louisiana State Mineral and Energy Board be subsequently modified, cancelled or abrogated due to the existence of conflicting leases, operating agreements, private claims or other future obligations or conditions which may affect all or any portion of the leased Tract, it shall not relieve the Lessee of the obligation to pay any bonus due thereon to the Louisiana State Mineral and Energy Board, nor shall the Louisiana State Mineral and Energy Board be obligated to refund any consideration paid by the Lessor prior to such modification, cancellation, or abrogation, including, but not limited to, bonuses, rentals and royalties.

Applicant: ACADIAN LAND SERVICES, L.L.C.

Bidder	Cash Payment	Price/ Acre	Rental	Oil	Gas	Other



Legend



15010045

Active_Leases

VERMILION

SEC 35

SEC 34

T11S - R3E

P.O.B.

T12S - R3E

SEC 2

SEC 11

SEC 10

VERMILION RIVER

COULEE KENNY

SL 20179



0 2,000 Feet

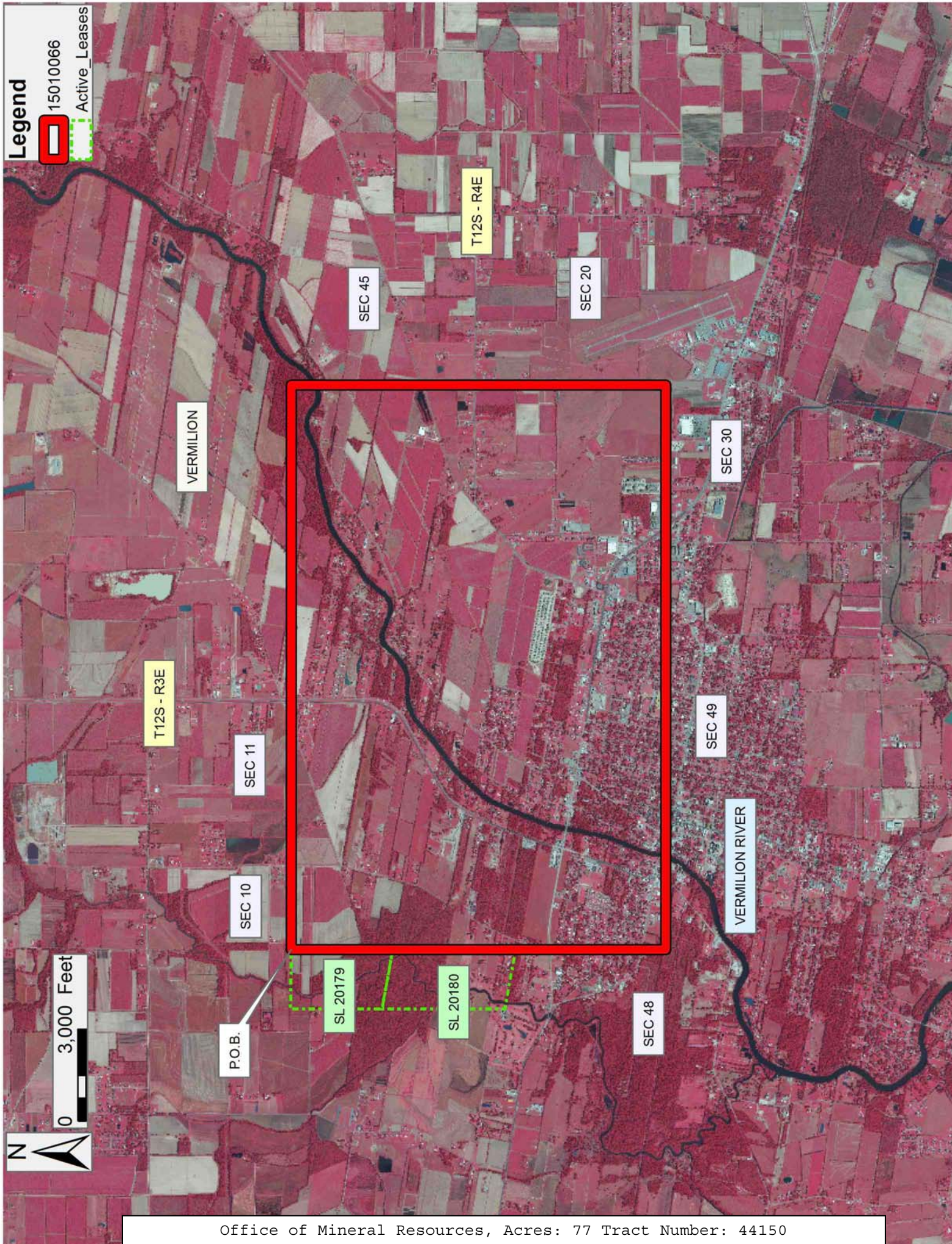
TRACT 44150 - Vermilion Parish, Louisiana

All of the lands now or formerly constituting the beds and bottoms of all water bodies of every nature and description as to which title is vested in the State of Louisiana, together with all islands arising therein and other lands formed by accretion or by reliction, where allowed by law, excepting tax adjudicated lands, and not presently under mineral lease on January 14, 2015, situated in Vermilion Parish, Louisiana, and more particularly described as follows: Beginning at a point on the Northeast corner of State Lease No. 20179 having Coordinates of X = 1,741,807.39 Y = 488,626.63; thence East 18,400.00 feet to a point having Coordinates of X = 1,760,207.39 and Y = 488,626.63; thence South 12,191.98 feet to a point having Coordinates of X = 1,760,207.39 and Y = 476,434.65; thence West 18,400.00 feet to a point having Coordinates of 1,741,807.39 and Y = 476,434.65; thence North 4,893.83 feet to a point on the Southeast corner of State Lease No. 20180 having Coordinates of X = 1,741,807.39 and Y = 481,328.48; thence North 3,999.61 feet along the Eastern boundary of said State Lease No. 20180 to its Northeast corner and the Southeast corner of State Lease No. 20179 having Coordinates of X = 1,741,807.39 and Y = 485,328.09; thence North 3,298.54 feet along the Eastern boundary of said State Lease No. 20179 to its Northeast corner and the point of beginning, (This tract includes only waterbottoms claimed and owned by the state and specifically excludes any land which the state may claim or own and to which the mineral rights are vested in the state), containing approximately **77 acres**, all as more particularly outlined on a plat on file in the Office of Mineral Resources, Department of Natural Resources. All bearings, distances and coordinates are based on Louisiana Coordinate System of 1927, (North or South Zone), where applicable.

NOTE: The above description of the Tract nominated for lease has been provided and corrected, where required, exclusively by the nomination party. Any mineral lease selected from this Tract and awarded by the Louisiana State Mineral and Energy Board shall be without warranty of any kind, either express, implied, or statutory, including, but not limited to, the implied warranties of merchantability and fitness for a particular purpose. Should the mineral lease awarded by the Louisiana State Mineral and Energy Board be subsequently modified, cancelled or abrogated due to the existence of conflicting leases, operating agreements, private claims or other future obligations or conditions which may affect all or any portion of the leased Tract, it shall not relieve the Lessee of the obligation to pay any bonus due thereon to the Louisiana State Mineral and Energy Board, nor shall the Louisiana State Mineral and Energy Board be obligated to refund any consideration paid by the Lessor prior to such modification, cancellation, or abrogation, including, but not limited to, bonuses, rentals and royalties.

Applicant: ACADIAN LAND SERVICES, L.L.C.

Bidder	Cash Payment	Price/ Acre	Rental	Oil	Gas	Other



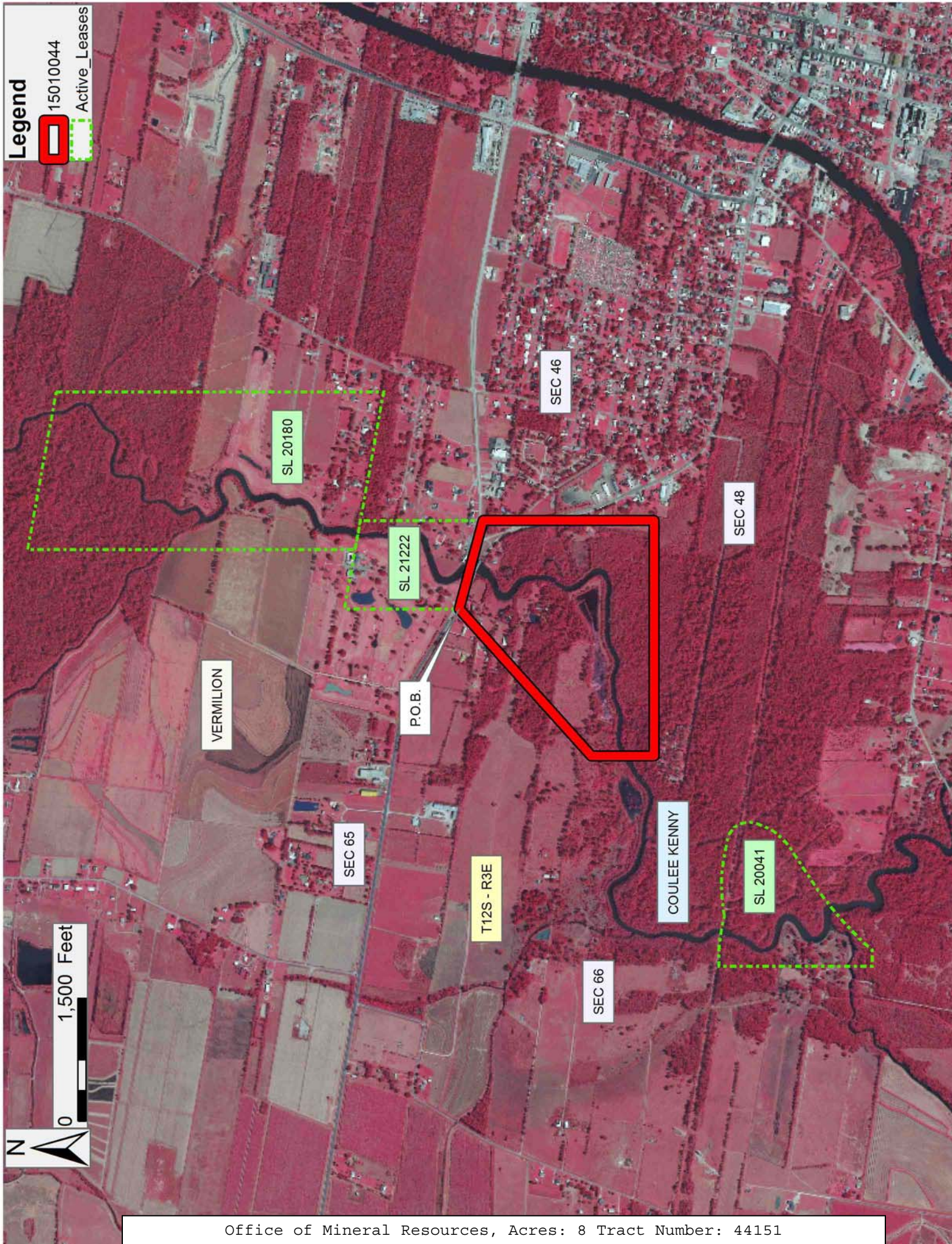
TRACT 44151 - Vermilion Parish, Louisiana

All of the lands now or formerly constituting the beds and bottoms of all water bodies of every nature and description as to which title is vested in the State of Louisiana, together with all islands arising therein and other lands formed by accretion or by reliction, where allowed by law, excepting tax adjudicated lands, and not presently under mineral lease on January 14, 2015, situated in Vermilion Parish, Louisiana, and more particularly described as follows: Beginning at a point on the Southwest corner of State Lease No. 21222 having Coordinates of X = 1,739,156.95 and Y = 480,406.58; thence South 74 degrees 54 minutes and 42 seconds East 1,115.87 feet along the South boundary of said State Lease No. 21222 to its Southeast corner having Coordinates of X = 1,740,234.35 and Y = 480,116.11; thence South 2,088.71 feet to a point having Coordinates of X = 1,740,234.35 and Y = 478,027.40; thence West 2,876.37 feet to a point having Coordinates of X = 1,737,357.98 and Y = 478,027.40; thence North 763.89 feet to a point having Coordinates of X = 1,737,357.98 and Y = 478,791.29; thence North 48 degrees 04 minutes 46 seconds East 2,417.74 feet to the point of beginning, containing approximately **8 acres**, all as more particularly outlined on a plat on file in the Office of Mineral Resources, Department of Natural Resources. All bearings, distances and coordinates are based on Louisiana Coordinate System of 1927, (North or South Zone), where applicable.

NOTE: The above description of the Tract nominated for lease has been provided and corrected, where required, exclusively by the nomination party. Any mineral lease selected from this Tract and awarded by the Louisiana State Mineral and Energy Board shall be without warranty of any kind, either express, implied, or statutory, including, but not limited to, the implied warranties of merchantability and fitness for a particular purpose. Should the mineral lease awarded by the Louisiana State Mineral and Energy Board be subsequently modified, cancelled or abrogated due to the existence of conflicting leases, operating agreements, private claims or other future obligations or conditions which may affect all or any portion of the leased Tract, it shall not relieve the Lessee of the obligation to pay any bonus due thereon to the Louisiana State Mineral and Energy Board, nor shall the Louisiana State Mineral and Energy Board be obligated to refund any consideration paid by the Lessor prior to such modification, cancellation, or abrogation, including, but not limited to, bonuses, rentals and royalties.

Applicant: ACADIAN LAND SERVICES, L.L.C.

Bidder	Cash Payment	Price/ Acre	Rental	Oil	Gas	Other



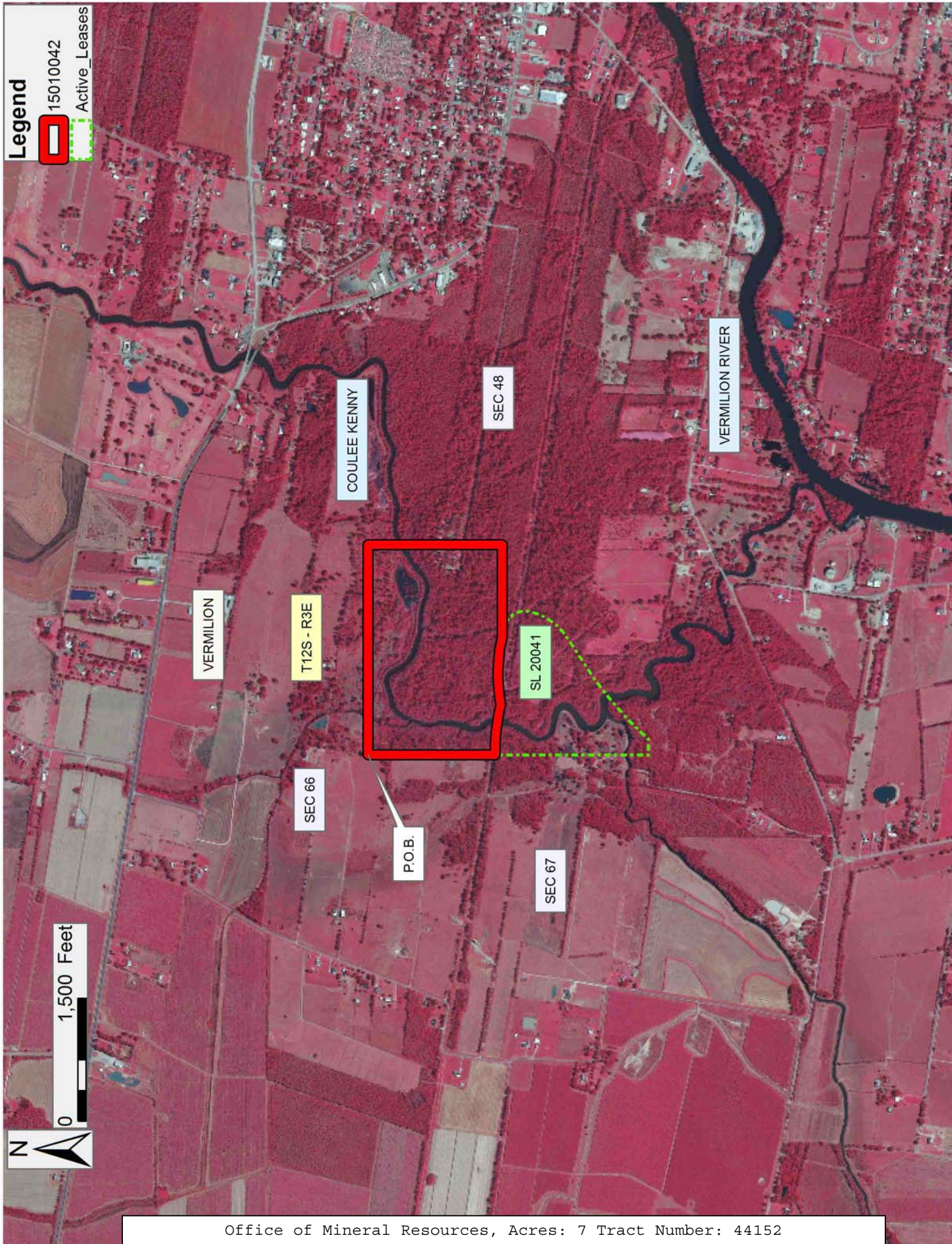
TRACT 44152 - Vermilion Parish, Louisiana

All of the lands now or formerly constituting the beds and bottoms of all water bodies of every nature and description as to which title is vested in the State of Louisiana, together with all islands arising therein and other lands formed by accretion or by reliction, where allowed by law, excepting tax adjudicated lands, and not presently under mineral lease on January 14, 2015, situated in Vermilion Parish, Louisiana, and more particularly described as follows: Beginning at a point having Coordinates of X = 1,734,792.28 and Y = 478,791.29; thence East a distance of 2,565.70 feet to a point having Coordinates of X = 1,737,357.98 and Y = 478,791.29; thence South a distance of 1,640.63 feet to a point having Coordinates of X = 1,737,357.98 and Y = 477,150.67; thence West a distance of 1,125.70 feet to a point on the Northern boundary of State Lease No. 20041 as amended having Coordinates of X = 1,736,232.28 and Y = 477,150.67; thence along the boundary said State Lease No. 20041 along a curve to the left having a radius of 2,007.41 feet and a chord bearing of North 88 degrees 52 minutes 48 seconds West a chord distance of 826.92 feet to a point having Coordinates of X = 1,735,405.51 and Y = 477,166.83, thence continuing along the Northern boundary of said State Lease No. 20041, as amended, along a curve to the left having a radius of 2,199.69 feet and a chord bearing of North 83 degrees 37 minutes 26 seconds West a chord distance of 617.05 feet to a point having Coordinates of X = 1,734,792.28 and Y = 477,235.35; thence North 1,555.94 feet to the point of beginning, containing approximately **7 acres**, all as more particularly outlined on a plat on file in the Office of Mineral Resources, Department of Natural Resources. All bearings, distances and coordinates are based on Louisiana Coordinate System of 1927, (North or South Zone), where applicable.

NOTE: The above description of the Tract nominated for lease has been provided and corrected, where required, exclusively by the nomination party. Any mineral lease selected from this Tract and awarded by the Louisiana State Mineral and Energy Board shall be without warranty of any kind, either express, implied, or statutory, including, but not limited to, the implied warranties of merchantability and fitness for a particular purpose. Should the mineral lease awarded by the Louisiana State Mineral and Energy Board be subsequently modified, cancelled or abrogated due to the existence of conflicting leases, operating agreements, private claims or other future obligations or conditions which may affect all or any portion of the leased Tract, it shall not relieve the Lessee of the obligation to pay any bonus due thereon to the Louisiana State Mineral and Energy Board, nor shall the Louisiana State Mineral and Energy Board be obligated to refund any consideration paid by the Lessor prior to such modification, cancellation, or abrogation, including, but not limited to, bonuses, rentals and royalties.

Applicant: ACADIAN LAND SERVICES, L.L.C.

Bidder	Cash Payment	Price/ Acre	Rental	Oil	Gas	Other



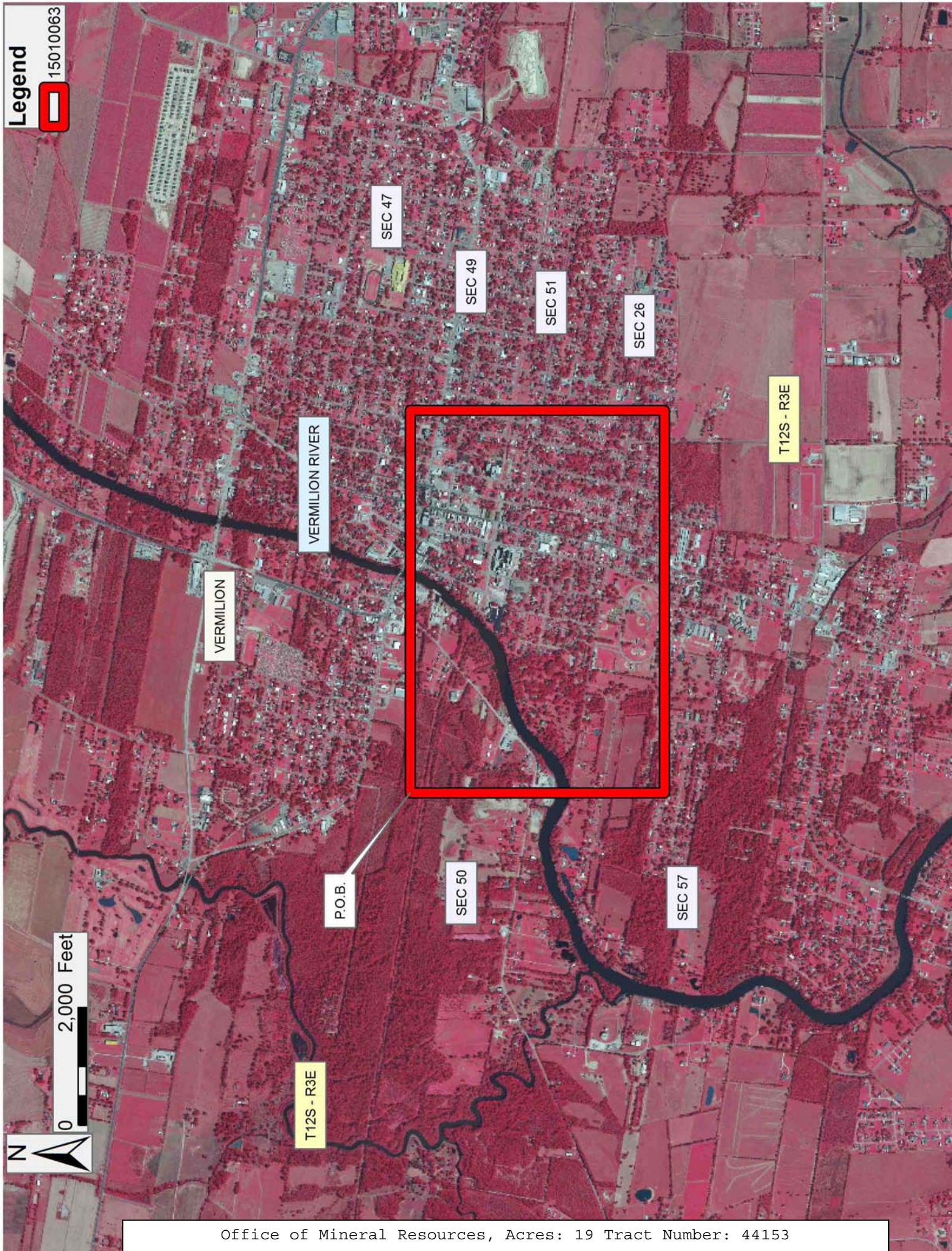
TRACT 44153 - Vermilion Parish, Louisiana

All of the lands now or formerly constituting the beds and bottoms of all water bodies of every nature and description as to which title is vested in the State of Louisiana, together with all islands arising therein and other lands formed by accretion or by reliction, where allowed by law, excepting tax adjudicated lands, and not presently under mineral lease on January 14, 2015, situated in Vermilion Parish, Louisiana, and more particularly described as follows: Beginning at a point having Coordinates of X = 1,741,134.63 and Y = 476,434.65; thence East 6,500 feet to a point having Coordinates of X = 1,747,634.63 and Y = 476,434.65; thence South 4,314.28 feet to a point having Coordinates of X = 1,747,634.63 and Y = 472,120.37; thence West 6,500 feet to a point having Coordinates of X = 1,741,134.63 and Y = 472,120.37; thence North 4,314.28 feet to the point of beginning, (This tract includes only waterbottoms claimed and owned by the state and specifically excludes any land which the state may claim or own and to which the mineral rights are vested in the state), containing approximately **19 acres**, all as more particularly outlined on a plat on file in the Office of Mineral Resources, Department of Natural Resources. All bearings, distances and coordinates are based on Louisiana Coordinate System of 1927, (North or South Zone), where applicable.

NOTE: The above description of the Tract nominated for lease has been provided and corrected, where required, exclusively by the nomination party. Any mineral lease selected from this Tract and awarded by the Louisiana State Mineral and Energy Board shall be without warranty of any kind, either express, implied, or statutory, including, but not limited to, the implied warranties of merchantability and fitness for a particular purpose. Should the mineral lease awarded by the Louisiana State Mineral and Energy Board be subsequently modified, cancelled or abrogated due to the existence of conflicting leases, operating agreements, private claims or other future obligations or conditions which may affect all or any portion of the leased Tract, it shall not relieve the Lessee of the obligation to pay any bonus due thereon to the Louisiana State Mineral and Energy Board, nor shall the Louisiana State Mineral and Energy Board be obligated to refund any consideration paid by the Lessor prior to such modification, cancellation, or abrogation, including, but not limited to, bonuses, rentals and royalties.

Bidder	Cash Payment	Price/ Acre	Rental	Oil	Gas	Other

Applicant: ACADIAN LAND SERVICES, L.L.C.



TRACT 44154 - Vermilion Parish, Louisiana

All of the lands now or formerly constituting the beds and bottoms of all water bodies of every nature and description as to which title is vested in the State of Louisiana, together with all islands arising therein and other lands formed by accretion or by reliction, where allowed by law, excepting tax adjudicated lands, and not presently under mineral lease on January 14, 2015, situated in Vermilion Parish, Louisiana, and more particularly described as follows: Beginning at a point having Coordinates of X = 1,736,721.09 and Y = 476,151.08; thence South 2,042.02 feet to a point having Coordinates of X = 1,736,721.09 and Y = 474,109.06; thence West 1,638.46 feet to a point having Coordinates of X = 1,735,082.63 and Y = 474,109.06; thence North 1,359.93 to a point on the boundary of State Lease No. 20041, as amended, having Coordinates of X = 1,735,082.63 and Y = 475,469.00; thence along said State Lease No. 20041 following a curve to the right having a radius of 4,971.94 feet and a chord bearing of North 48 degrees 50 minutes 26 seconds East and a chord length of 841.37 feet to a point having Coordinates of X = 1,735,716.08 and Y = 476,022.75, thence continuing along boundary of said State Lease No. 20041, as amended, North 56 degrees 34 minutes 01 seconds East a distance of 232.91 feet to a point having Coordinates of X = 1,735,910.46 and Y = 476,151.08; thence East 810.63 feet to the point of beginning, containing approximately **7 acres**, all as more particularly outlined on a plat on file in the Office of Mineral Resources, Department of Natural Resources. All bearings, distances and coordinates are based on Louisiana Coordinate System of 1927, (North or South Zone), where applicable.

NOTE: The above description of the Tract nominated for lease has been provided and corrected, where required, exclusively by the nomination party. Any mineral lease selected from this Tract and awarded by the Louisiana State Mineral and Energy Board shall be without warranty of any kind, either express, implied, or statutory, including, but not limited to, the implied warranties of merchantability and fitness for a particular purpose. Should the mineral lease awarded by the Louisiana State Mineral and Energy Board be subsequently modified, cancelled or abrogated due to the existence of conflicting leases, operating agreements, private claims or other future obligations or conditions which may affect all or any portion of the leased Tract, it shall not relieve the Lessee of the obligation to pay any bonus due thereon to the Louisiana State Mineral and Energy Board, nor shall the Louisiana State Mineral and Energy Board be obligated to refund any consideration paid by the Lessor prior to such modification, cancellation, or abrogation, including, but not limited to, bonuses, rentals and royalties.

Applicant: ACADIAN LAND SERVICES, L.L.C.

Bidder	Cash Payment	Price/ Acre	Rental	Oil	Gas	Other

