

TRACT 44129 - Portion of Blocks 119, and 120, South Timbalier Area, Revised, Terrebonne Parish, Louisiana

The beds and bottoms of all water bodies belonging to the State of Louisiana located in Blocks 119, and 120, South Timbalier Area, Revised, together with any present lands formed by accretion to the shoreline or islands formed therein, located in Terrebonne Parish, Louisiana, owned by and not presently under mineral lease as of January 14, 2015, from the State of Louisiana, the geographical area of which is more fully described as follows: Beginning at a point having Coordinates of X = 2,218,192.88 and Y = 143,367.87; thence North 68 degrees 22 minutes 25 seconds East 4,051.31 feet to the Southwest corner of State Lease No. 21239 having Coordinates of X = 2,221,959.00 and Y = 144,861.00; thence along the boundaries of said State Lease No. 21239 the following courses: South 58 degrees 33 minutes 40 seconds East 5,274.28 feet to a point having Coordinates of X = 2,226,459.00 and Y = 142,110.00 and North 54 degrees 22 minutes 08 seconds East 390.24 feet to its Southeast corner and the southern tip of State Lease No. 21238 having Coordinates of X = 2,226,776.18 and Y = 142,337.34; thence along the boundaries of said State Lease No. 21238 the following courses: North 54 degrees 22 minutes 08 seconds East 1,968.31 feet to a point having Coordinates of X = 2,228,376.00 and Y = 143,484.00 and North 62 degrees 15 minutes 59 seconds West 1,807.46 feet to its northern tip and the Northeast corner of said State Lease No. 21239 having Coordinates of X = 2,226,776.18 and Y = 144,325.12; thence North 62 degrees 15 minutes 59 seconds West 3,652.81 feet along the northern boundary of said State Lease No. 21239 to its Northwest corner having Coordinates of X = 2,223,543.00 and Y = 146,025.00; thence North 27 degrees 32 minutes 59 seconds West 813.43 feet to a point of intersection with the Louisiana Coastline, as decreed by the Supreme Court of the United States, as determined by a Special Master appointed therein, in litigation styled *United States v. State of Louisiana et al No. 9 Original*, in 1975, having Coordinates of X = 2,223,166.77 and Y = 146,746.20; thence along the said Coastline Northeasterly on a straight line to a point having Coordinates of X = 2,231,206.73 and Y = 148,708.44; thence South 7,146.10 feet to a point having Coordinates of X = 2,231,206.73 and Y = 141,562.34; thence West 13,013.85 feet to a point having Coordinates of X = 2,218,192.88 and Y = 141,562.34; thence North 1,805.53 feet to the point of beginning, containing approximately **1,215.71 acres**, all as more particularly outlined on a plat on file in the Office of Mineral Resources, Department of Natural Resources. All bearings, distances and coordinates are based on Louisiana Coordinate System of 1927, (North or South Zone).

NOTE: The above description of the Tract nominated for lease has been provided and corrected, where required, exclusively by the nomination party. Any mineral lease selected from this Tract and awarded by the Louisiana State Mineral and Energy Board shall be without warranty of any kind, either express, implied, or statutory, including, but not limited to, the implied warranties of merchantability and fitness for a particular purpose. Should the mineral lease awarded by the Louisiana State Mineral




and Energy Board be subsequently modified, cancelled or abrogated due to the existence of conflicting leases, operating agreements, private claims or other future obligations or conditions which may affect all or any portion of the leased Tract, it shall not relieve the Lessee of the obligation to pay any bonus due thereon to the Louisiana State Mineral and Energy Board, nor shall the Louisiana State Mineral and Energy Board be obligated to refund any consideration paid by the Lessor prior to such modification, cancellation, or abrogation, including, but not limited to, bonuses, rentals and royalties.

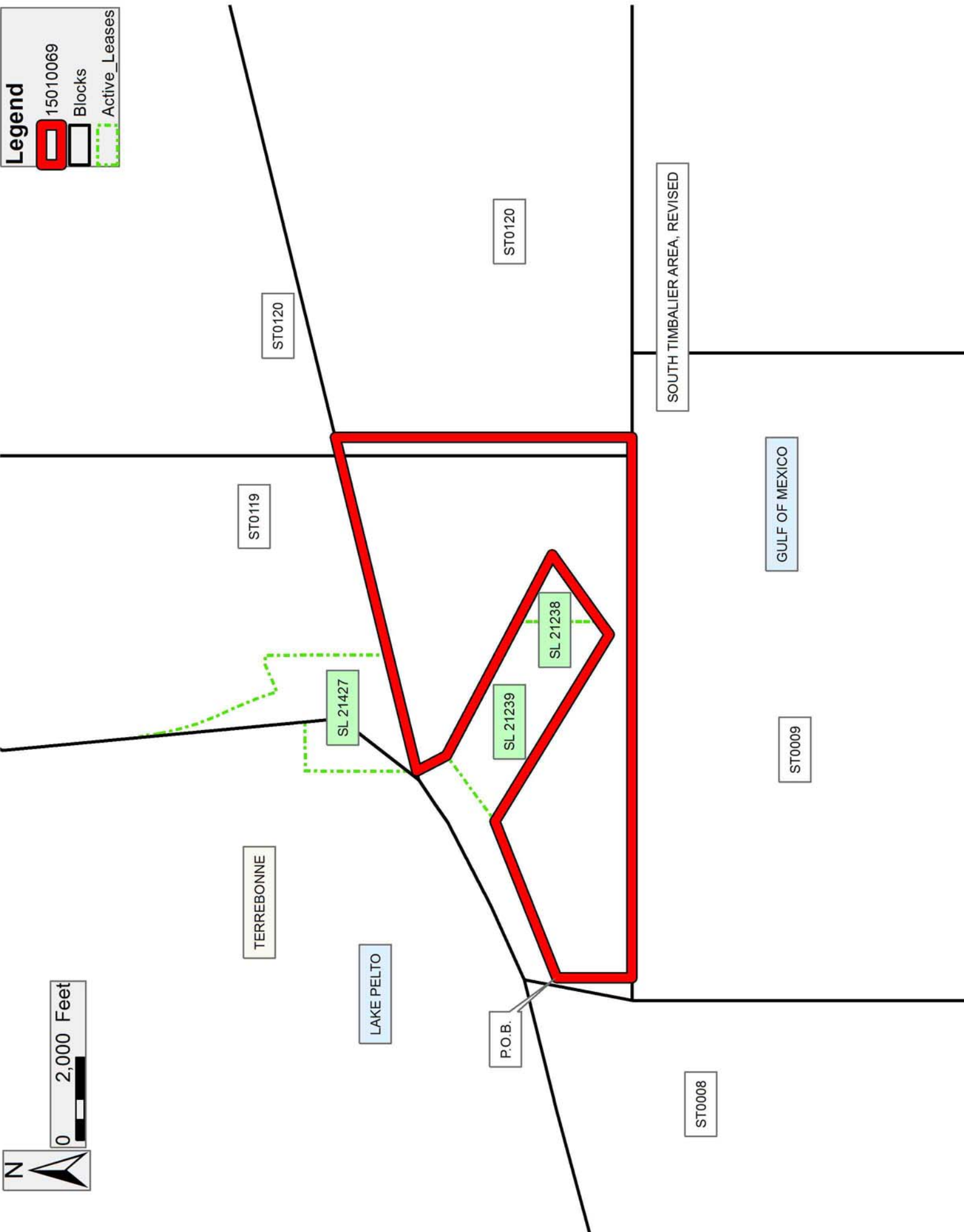
NOTE: The State of Louisiana does hereby reserve, and this lease shall be subject to, the imprescriptible right of surface use in the nature of a servitude in favor of the Department of Natural Resources, including its Offices and Commissions, for the sole purpose of implementing, constructing, servicing and maintaining approved coastal zone management and/or restoration projects. Utilization of any and all rights derived under this lease by the mineral lessee, its agents, successors or assigns, shall not interfere with nor hinder the reasonable surface use by the Department of Natural Resources, its Offices or Commissions, as herein above reserved.

Applicant: CYPRESS ENERGY CORPORATION

Bidder	Cash Payment	Price/Acre	Rental	Oil	Gas	Other

Legend

-  15010069
-  Blocks
-  Active_Leases



TRACT 44130 - Portion of Blocks 12, and 16, South Timbalier Area, Revised, Terrebonne Parish, Louisiana

The beds and bottoms of all water bodies belonging to the State of Louisiana located in Blocks 12, and 16, South Timbalier Area, Revised, together with any present lands formed by accretion to the shoreline or islands formed therein, located in Terrebonne Parish, Louisiana, owned by and not presently under mineral lease as of January 14, 2015, from the State of Louisiana, the geographical area of which is more fully described as follows: Beginning at a point on the Louisiana Coastline, as decreed by the Supreme Court of the United States, as determined by a Special Master appointed therein, in litigation styled *United States v. State of Louisiana et al No. 9 Original*, in 1975, having Coordinates of X = 2,264,446.02 and Y = 147,675.79; thence along the said Coastline the following: Southeasterly on a straight line to a point having Coordinates of X = 2,264,450 and Y = 147,674, Southeasterly on a straight line to a point having Coordinates of X = 2,270,205 and Y = 145,091 and Southeasterly on a straight line to a point having Coordinates of X = 2,270,719.19 and Y = 144,872.61; thence South 14,440.22 feet to a point having Coordinates of X = 2,270,719.19 and Y = 130,432.39; thence West 3,923.82 feet to a point on the east boundary of State Lease No. 16121 having Coordinates of X = 2,266,795.37 and Y = 130,432.39; thence North 49 degrees 05 minutes 33 seconds West 1,737.66 feet along the eastern boundary of said State Lease No. 16121 to a point of intersection with the east boundary of State Lease No. 17435 having Coordinates of 2,265,482.10 and Y = 131,570.28; thence along the boundaries of said State Lease No. 17435 the following courses: North 37 degrees 40 minutes 00 seconds West 1,427.17 feet to a point having Coordinates of X = 2,264,610.00 and Y = 132,700.00 and West 163.98 feet to its Northwest corner and the Northeast corner of State Lease No. 16945 having Coordinates of X = 2,264,446.02 and Y = 132,700.00; thence North 8,410.92 feet to the southern tip of State Lease No. 15110 having Coordinates of X = 2,264,446.02 and Y = 141,110.92; thence along the boundaries of said State Lease No. 15110 the following courses: North 47 degrees 15 minutes 48 seconds East 1,061.94 feet to a point having Coordinates of X = 2,265,226.00 and Y = 141,831.58, North 73 degrees 59 minutes 53 seconds West 393.90 feet to a point having Coordinates of X = 2,264,847.36 and Y = 141,940.17 and North 69 degrees 57 minutes 29 seconds West 427.21 feet to its Northern tip having Coordinates of X = 2,264,446.02 and Y = 142,086.58; thence North 5,589.72 feet to the point of beginning, containing approximately **2,212.22 acres**, all as more particularly outlined on a plat on file in the Office of Mineral Resources, Department of Natural Resources. All bearings, distances and coordinates are based on Louisiana Coordinate System of 1927, (North or South Zone).

NOTE: The above description of the Tract nominated for lease has been provided and corrected, where required, exclusively by the nomination party. Any mineral lease selected from this Tract and awarded by the Louisiana State Mineral and Energy Board shall be without warranty of any kind, either express, implied, or statutory, including, but not limited

to, the implied warranties of merchantability and fitness for a particular purpose. Should the mineral lease awarded by the Louisiana State Mineral and Energy Board be subsequently modified, cancelled or abrogated due to the existence of conflicting leases, operating agreements, private claims or other future obligations or conditions which may affect all or any portion of the leased Tract, it shall not relieve the Lessee of the obligation to pay any bonus due thereon to the Louisiana State Mineral and Energy Board, nor shall the Louisiana State Mineral and Energy Board be obligated to refund any consideration paid by the Lessor prior to such modification, cancellation, or abrogation, including, but not limited to, bonuses, rentals and royalties.




NOTE: The State of Louisiana does hereby reserve, and this lease shall be subject to, the imprescriptible right of surface use in the nature of a servitude in favor of the Department of Natural Resources, including its Offices and Commissions, for the sole purpose of implementing, constructing, servicing and maintaining approved coastal zone management and/or restoration projects. Utilization of any and all rights derived under this lease by the mineral lessee, its agents, successors or assigns, shall not interfere with nor hinder the reasonable surface use by the Department of Natural Resources, its Offices or Commissions, as herein above reserved.

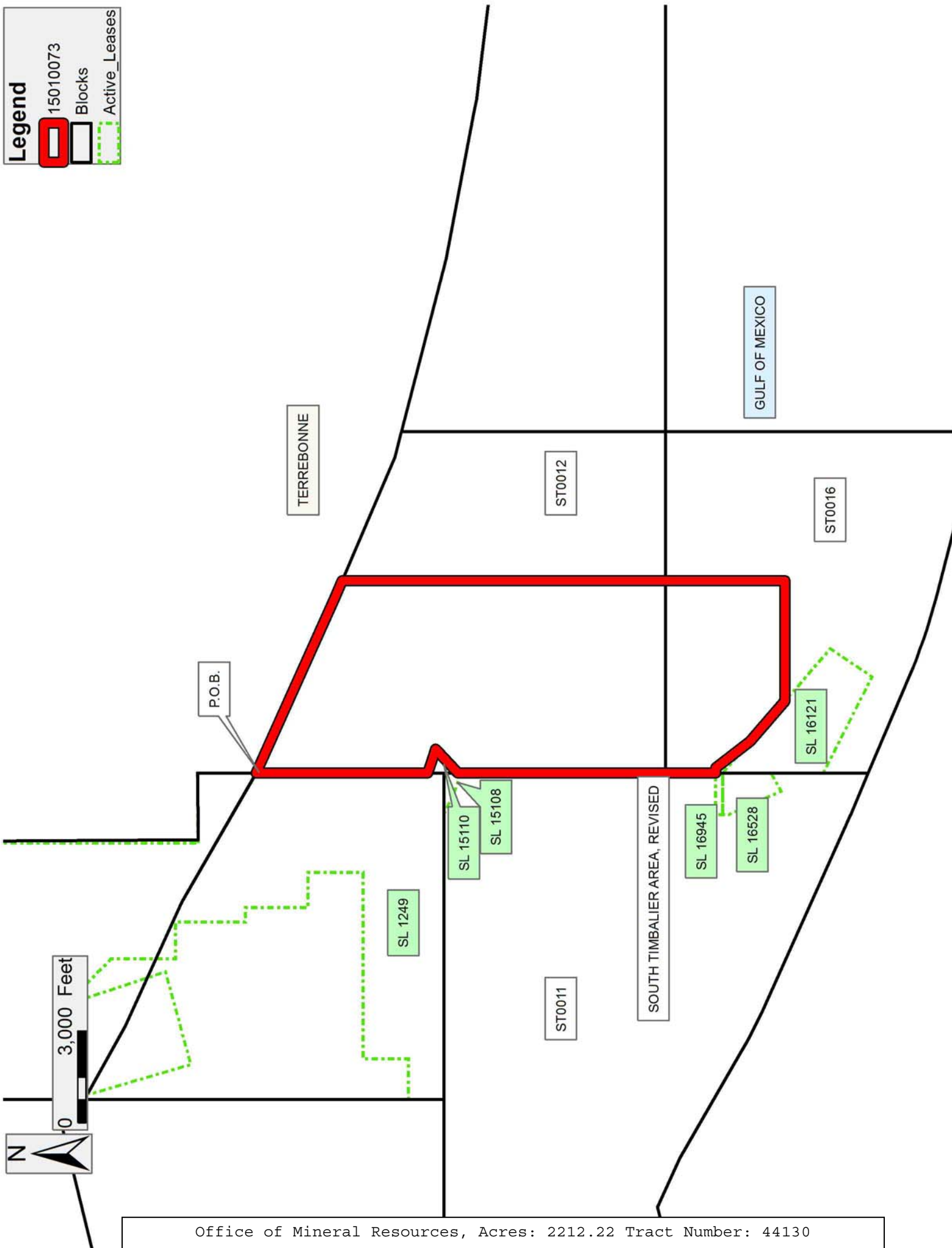
NOTE: It appears, according to our records, that a portion of this Tract is located within the restrictive safety fairway area as set out by the Corps of Engineers, U.S. Army and/or the restrictive anchorage area as set out by the U.S. Coast Guard.

Applicant: CYPRESS ENERGY CORPORATION

Bidder	Cash Payment	Price/Acre	Rental	Oil	Gas	Other

Legend

-  15010073
-  Blocks
-  Active_Leases



TRACT 44131 - Portion of Block 11, South Timbalier Area, Revised, Terrebonne Parish, Louisiana

The beds and bottoms of all water bodies belonging to the State of Louisiana located in Block 11, South Timbalier Area, Revised, together with any present lands formed by accretion to the shoreline or islands formed therein, located in Terrebonne Parish, Louisiana, owned by and not presently under mineral lease as of January 14, 2015, from the State of Louisiana, the geographical area of which is more fully described as follows: Beginning at the Southwest corner of State Lease No. 21457 having Coordinates of X = 2,257,071.69 and Y = 140,296.54; thence along the boundaries of said State Lease No. 21457 the following courses: East 3,326.30 feet to a point having Coordinates of X = 2,260,397.99 and Y = 140,296.54 and North 1,256.99 feet to its Northeast corner and a point on the southern boundary of State Lease No. 1249, as amended having Coordinates of X = 2,260,397.99 and Y = 141,553.53; thence East 2,726.64 feet along the southern boundary of said State Lease No. 1249 to the most western tip of State Lease No. 15108 having Coordinates of X = 2,263,124.63 and Y = 141,553.53; thence along the boundaries of said State Lease No. 15108 the following courses: South 64 degrees 12 minutes 06 seconds East 500.00 feet to a point having Coordinates of X = 2,263,574.79 and Y = 141,335.93, South 66 degrees 02 minutes 24 seconds East 301.90 feet to a point having Coordinates of X = 2,263,850.68 and Y = 141,213.33, South 69 degrees 40 minutes 04 seconds East 537.53 feet to a point having Coordinates of X = 2,264,354.72 and Y = 141,026.56 and North 47 degrees 15 minutes 46 seconds East 124.31 feet to its Southeast corner having Coordinates of X = 2,264,446.02 and Y = 141,110.92; thence South 6,294.21 feet to a point having Coordinates of X = 2,264,446.02 and Y = 134,816.71; thence West 7,374.33 feet to a point having Coordinates of X = 2,257,071.69 and Y = 134,816.71; thence North 5,479.83 feet to the point of beginning, containing approximately **1,035.58 acres**, all as more particularly outlined on a plat on file in the Office of Mineral Resources, Department of Natural Resources. All bearings, distances and coordinates are based on Louisiana Coordinate System of 1927, (North or South Zone).

NOTE: The above description of the Tract nominated for lease has been provided and corrected, where required, exclusively by the nomination party. Any mineral lease selected from this Tract and awarded by the Louisiana State Mineral and Energy Board shall be without warranty of any kind, either express, implied, or statutory, including, but not limited to, the implied warranties of merchantability and fitness for a particular purpose. Should the mineral lease awarded by the Louisiana State Mineral and Energy Board be subsequently modified, cancelled or abrogated due to the existence of conflicting leases, operating agreements, private claims or other future obligations or conditions which may affect all or any portion of the leased Tract, it shall not relieve the Lessee of the obligation to pay any bonus due thereon to the Louisiana State Mineral and Energy Board, nor shall the Louisiana State Mineral and Energy Board be obligated to refund any consideration paid by the Lessor prior to such

modification, cancellation, or abrogation, including, but not limited to, bonuses, rentals and royalties.




NOTE: The State of Louisiana does hereby reserve, and this lease shall be subject to, the imprescriptible right of surface use in the nature of a servitude in favor of the Department of Natural Resources, including its Offices and Commissions, for the sole purpose of implementing, constructing, servicing and maintaining approved coastal zone management and/or restoration projects. Utilization of any and all rights derived under this lease by the mineral lessee, its agents, successors or assigns, shall not interfere with nor hinder the reasonable surface use by the Department of Natural Resources, its Offices or Commissions, as herein above reserved.

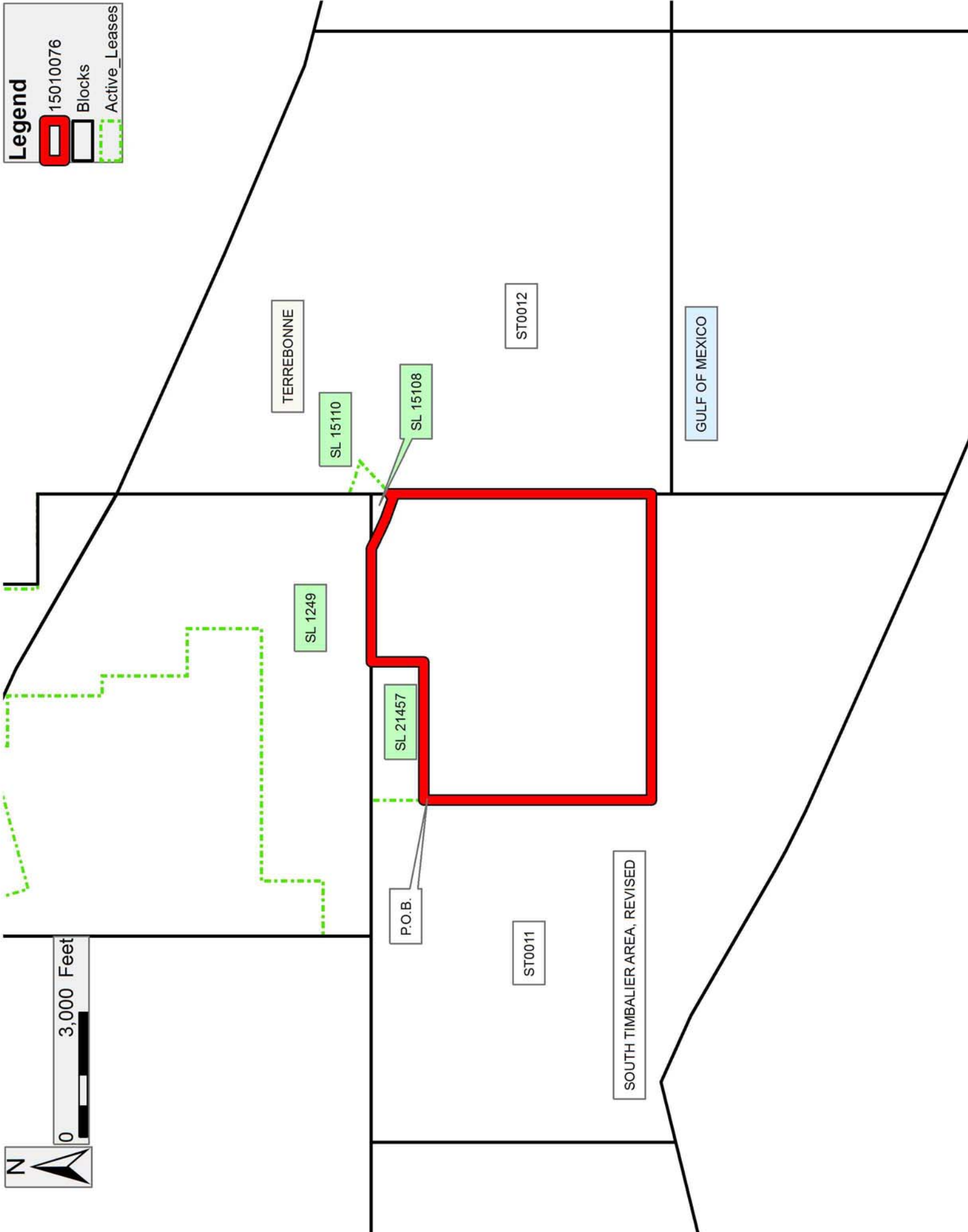
NOTE: It appears, according to our records, that a portion of this Tract is located within the restrictive safety fairway area as set out by the Corps of Engineers, U.S. Army and/or the restrictive anchorage area as set out by the U.S. Coast Guard.

Applicant: CYPRESS ENERGY CORPORATION

Bidder	Cash Payment	Price/Acre	Rental	Oil	Gas	Other

Legend

-  15010076
-  Blocks
-  Active_Leases



TRACT 44132 - Portion of Blocks 10, 11, and 121, South Timbalier Area, Revised, Terrebonne Parish, Louisiana

The beds and bottoms of all water bodies belonging to the State of Louisiana located in Blocks 10, 11, and 121, South Timbalier Area, Revised, together with any present lands formed by accretion to the shoreline or islands formed therein, located in Terrebonne Parish, Louisiana, owned by and not presently under mineral lease as of January 14, 2015, from the State of Louisiana, the geographical area of which is more fully described as follows: Beginning at the Southwest corner of State Lease No. 21137 having Coordinates of X = 2,250,971.50 and Y = 141,562.34; thence along the boundaries of said State Lease No. 21137 the following courses: South 89 degrees 42 minutes 05 seconds East 1,690.05 feet to a point having Coordinates of X = 2,252,661.53 and Y = 141,553.53 and East 1,146.51 feet to its Southeast corner and a point on the southern boundary of State Lease No. 1249, as amended having Coordinates of X = 2,253,808.04 and Y = 141,553.53; thence continue East 3,263.65 feet along the southern boundary of said State Lease No. 1249 to the Northwest corner of Stat Lease No 21457 having Coordinates of X = 2,257,071.69 and Y = 141,553.53; thence South 1,256.99 feet along the boundaries of said State Lease No. 21457 to Southwest corner having Coordinates of X = 2,257,071.69 and Y = 140,296.54; thence continue South 5,479.83 feet to a point having Coordinates of X = 2,257,071.69 and Y = 134,816.71; thence West 14,770.38 feet to a point having Coordinates of X = 2,242,301.31 and Y = 134,816.71; thence North 3,323.22 feet to a point on the southern boundary of State Lease No. 21240 having Coordinates of X = 2,242,301.31 and Y = 138,139.92; thence along the boundaries of said State Lease No. 21240 the following courses: North 66 degrees 17 minutes 10 seconds East 597.00 feet to a point having Coordinates of X = 2,242,847.90 and Y = 138,380.02 and North 54 degrees 00 minutes 18 seconds West 675.58 feet to a point having Coordinates of X = 2,242,301.31 and Y = 138,777.07; thence North 2,782.87 feet to a point having Coordinates of X = 2,242,301.31 and Y = 141,559.94; thence North 89 degrees 59 minutes 03 seconds East 8,670.19 feet to the point of beginning, containing approximately **2,282.02 acres**, all as more particularly outlined on a plat on file in the Office of Mineral Resources, Department of Natural Resources. All bearings, distances and coordinates are based on Louisiana Coordinate System of 1927, (North or South Zone).

NOTE: The above description of the Tract nominated for lease has been provided and corrected, where required, exclusively by the nomination party. Any mineral lease selected from this Tract and awarded by the Louisiana State Mineral and Energy Board shall be without warranty of any kind, either express, implied, or statutory, including, but not limited to, the implied warranties of merchantability and fitness for a particular purpose. Should the mineral lease awarded by the Louisiana State Mineral and Energy Board be subsequently modified, cancelled or abrogated due to the existence of conflicting leases, operating agreements, private claims or other future obligations or conditions which may affect all or any portion of the leased Tract, it shall not relieve the Lessee of the

obligation to pay any bonus due thereon to the Louisiana State Mineral and Energy Board, nor shall the Louisiana State Mineral and Energy Board be obligated to refund any consideration paid by the Lessor prior to such modification, cancellation, or abrogation, including, but not limited to, bonuses, rentals and royalties.




NOTE: The State of Louisiana does hereby reserve, and this lease shall be subject to, the imprescriptible right of surface use in the nature of a servitude in favor of the Department of Natural Resources, including its Offices and Commissions, for the sole purpose of implementing, constructing, servicing and maintaining approved coastal zone management and/or restoration projects. Utilization of any and all rights derived under this lease by the mineral lessee, its agents, successors or assigns, shall not interfere with nor hinder the reasonable surface use by the Department of Natural Resources, its Offices or Commissions, as herein above reserved.

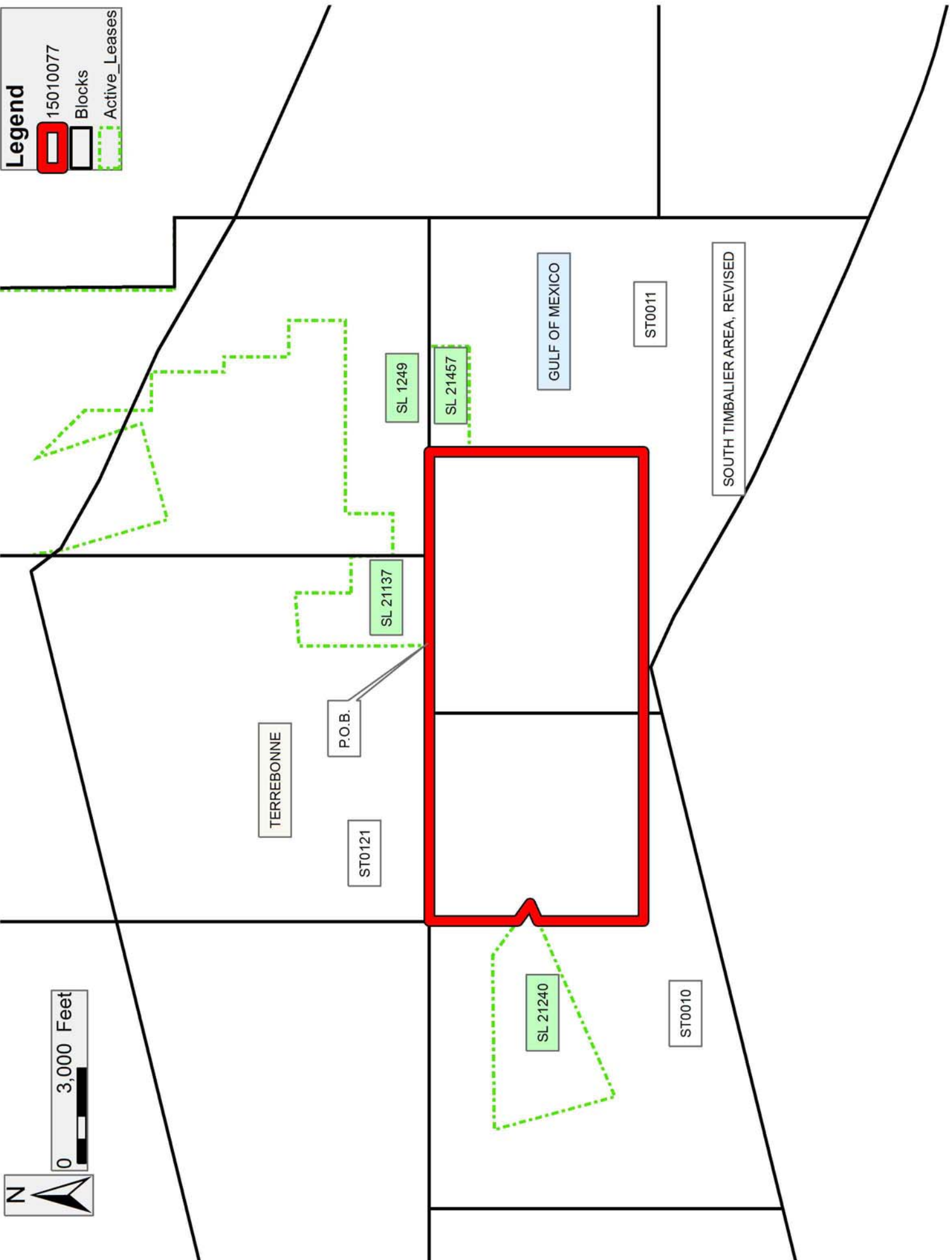
NOTE: It appears, according to our records, that a portion of this Tract is located within the restrictive safety fairway area as set out by the Corps of Engineers, U.S. Army and/or the restrictive anchorage area as set out by the U.S. Coast Guard.

Applicant: CYPRESS ENERGY CORPORATION

Bidder	Cash Payment	Price/Acre	Rental	Oil	Gas	Other

Legend

-  15010077
-  Blocks
-  Active_Leases



TRACT 44133 - Portion of Blocks 10, 119, 120, and 9, South Timbalier Area, Revised, Terrebonne Parish, Louisiana

The beds and bottoms of all water bodies belonging to the State of Louisiana located in Blocks 10, 119, 120, and 9, South Timbalier Area, Revised, together with any present lands formed by accretion to the shoreline or islands formed therein, located in Terrebonne Parish, Louisiana, owned by and not presently under mineral lease as of January 14, 2015, from the State of Louisiana, the geographical area of which is more fully described as follows: Beginning at a point having Coordinates of X = 2,227,524.25 and Y = 141,562.34; thence East 14,777.05 feet to a point having Coordinates of X = 2,242,301.31 and Y = 141,562.34; thence South 2,785.27 feet to a point on the North boundary of State Lease No. 21240 having Coordinates of X = 2,242,301.31 and Y = 138,777.07; thence along the boundaries of said State Lease No. 21240 the following courses: North 54 degrees 00 minutes 18 seconds West 1,332.37 feet to a point having Coordinates of X = 2,241,223.33 and Y = 139,560.12, South 89 degrees 29 minutes 44 seconds West 5,491.25 feet to a point having Coordinates of X = 2,235,732.29 and Y = 139,511.77, South 15 degrees 13 minutes 35 seconds East 3,941.03 feet to a point having Coordinates of X = 2,236,767.33 and Y = 135,709.09 and North 66 degrees 17 minutes 10 seconds East 6,044.32 feet to a point having Coordinates of X = 2,242,301.31 and Y = 138,139.92; thence South 3,323.22 feet to a point having Coordinates of X = 2,242,301.31 and Y = 134,816.71; thence West 14,777.05 feet to a point having Coordinates of X = 2,227,524.25 and Y = 134,816.71; thence North 6,745.63 feet to the point of beginning, containing approximately **1,919.92 acres**, all as more particularly outlined on a plat on file in the Office of Mineral Resources, Department of Natural Resources. All bearings, distances and coordinates are based on Louisiana Coordinate System of 1927, (North or South Zone).

NOTE: The above description of the Tract nominated for lease has been provided and corrected, where required, exclusively by the nomination party. Any mineral lease selected from this Tract and awarded by the Louisiana State Mineral and Energy Board shall be without warranty of any kind, either express, implied, or statutory, including, but not limited to, the implied warranties of merchantability and fitness for a particular purpose. Should the mineral lease awarded by the Louisiana State Mineral and Energy Board be subsequently modified, cancelled or abrogated due to the existence of conflicting leases, operating agreements, private claims or other future obligations or conditions which may affect all or any portion of the leased Tract, it shall not relieve the Lessee of the obligation to pay any bonus due thereon to the Louisiana State Mineral and Energy Board, nor shall the Louisiana State Mineral and Energy Board be obligated to refund any consideration paid by the Lessor prior to such modification, cancellation, or abrogation, including, but not limited to, bonuses, rentals and royalties.

NOTE: The State of Louisiana does hereby reserve, and this lease shall be subject to, the imprescriptible right of surface use in the nature of a

servitude in favor of the Department of Natural Resources, including its Offices and Commissions, for the sole purpose of implementing, constructing, servicing and maintaining approved coastal zone management and/or restoration projects. Utilization of any and all rights derived under this lease by the mineral lessee, its agents, successors or assigns, shall not interfere with nor hinder the reasonable surface use by the Department of Natural Resources, its Offices or Commissions, as herein above reserved.

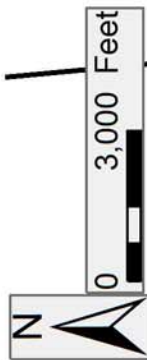
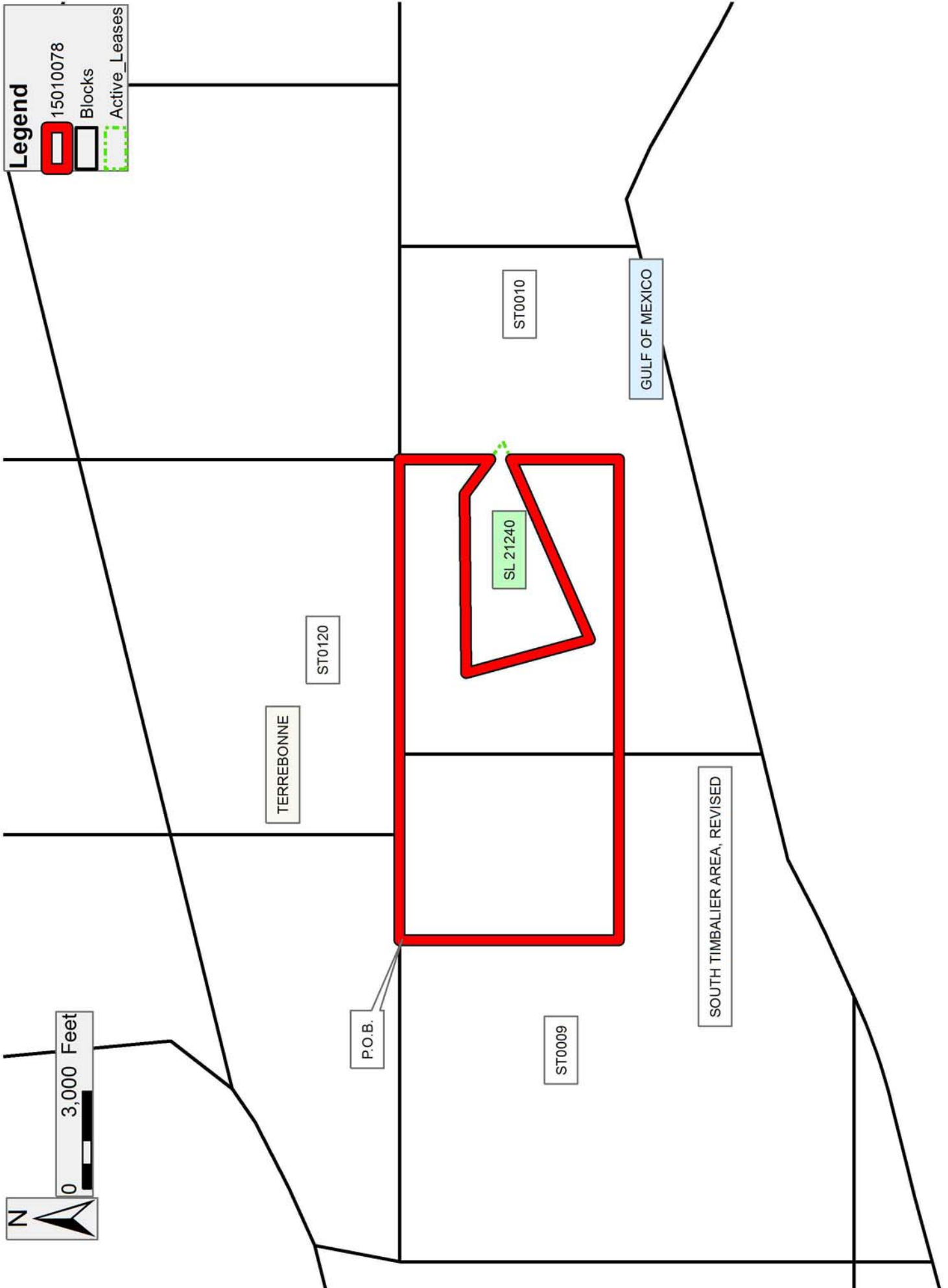
NOTE: It appears, according to our records, that a portion of this Tract is located within the restrictive safety fairway area as set out by the Corps of Engineers, U.S. Army and/or the restrictive anchorage area as set out by the U.S. Coast Guard.

Applicant: CYPRESS ENERGY CORPORATION

Bidder	Cash Payment	Price/Acre	Rental	Oil	Gas	Other

Legend

- 15010078
- Blocks
- Active_Leases



TRACT 44134 - Portion of Blocks 119, and 9, South Timbalier Area, Revised, Terrebonne Parish, Louisiana

The beds and bottoms of all water bodies belonging to the State of Louisiana located in Blocks 119, and 9, South Timbalier Area, Revised, together with any present lands formed by accretion to the shoreline or islands formed therein, located in Terrebonne Parish, Louisiana, owned by and not presently under mineral lease as of January 14, 2015, from the State of Louisiana, the geographical area of which is more fully described as follows: Beginning at a point having Coordinates of X = 2,218,192.88 and Y = 141,562.34; thence East 9,331.37 feet to a point having Coordinates of X = 2,227,524.25 and Y = 141,562.34; thence South 6,745.63 feet to a point having Coordinates of X = 2,227,524.25 and Y = 134,816.71; thence West 9,331.37 feet to a point having Coordinates of X = 2,218,192.88 and Y = 134,816.71; thence North 6,745.63 feet to the point of beginning, containing approximately **1,445.04 acres**, all as more particularly outlined on a plat on file in the Office of Mineral Resources, Department of Natural Resources. All bearings, distances and coordinates are based on Louisiana Coordinate System of 1927, (North or South Zone).

NOTE: The above description of the Tract nominated for lease has been provided and corrected, where required, exclusively by the nomination party. Any mineral lease selected from this Tract and awarded by the Louisiana State Mineral and Energy Board shall be without warranty of any kind, either express, implied, or statutory, including, but not limited to, the implied warranties of merchantability and fitness for a particular purpose. Should the mineral lease awarded by the Louisiana State Mineral and Energy Board be subsequently modified, cancelled or abrogated due to the existence of conflicting leases, operating agreements, private claims or other future obligations or conditions which may affect all or any portion of the leased Tract, it shall not relieve the Lessee of the obligation to pay any bonus due thereon to the Louisiana State Mineral and Energy Board, nor shall the Louisiana State Mineral and Energy Board be obligated to refund any consideration paid by the Lessor prior to such modification, cancellation, or abrogation, including, but not limited to, bonuses, rentals and royalties.

NOTE: The State of Louisiana does hereby reserve, and this lease shall be subject to, the imprescriptible right of surface use in the nature of a servitude in favor of the Department of Natural Resources, including its Offices and Commissions, for the sole purpose of implementing, constructing, servicing and maintaining approved coastal zone management and/or restoration projects. Utilization of any and all rights derived under this lease by the mineral lessee, its agents, successors or assigns, shall not interfere with nor hinder the reasonable surface use by the Department of Natural Resources, its Offices or Commissions, as herein above reserved.

Applicant: CYPRESS ENERGY CORPORATION

Bidder	Cash Payment	Price/Acre	Rental	Oil	Gas	Other

Legend
15010079
Blocks

0 2,000 Feet
N

