

TRACT 44119 - Portion of Block 52, Breton Sound Area, and Block 45, Main Pass Area, Revised, Plaquemines Parish, Louisiana

The beds and bottoms of all water bodies belonging to the State of Louisiana located in Block 52, Breton Sound Area, and Block 45, Main Pass Area, Revised, together with any present lands formed by accretion to the shoreline or islands formed therein, located in Plaquemines Parish, Louisiana, owned by and not presently under mineral lease as of January 14, 2015, from the State of Louisiana, the geographical area of which is more fully described as follows: Beginning at a point having Coordinates of X = 2,686,049.00 and Y = 278,080.00, said point being on the North line of Block 45, Main Pass Area, Revised, said point also being the northernmost north west corner of State of Louisiana State Lease No. 18550; Thence on and along the western and southern boundaries of said State of Louisiana State Lease No. 18550 the following courses and distances, to wit: South 39 degrees 19 minutes 30 seconds West 3,847.13 feet to point a having Coordinates of X = 2,683,611.00 and Y = 275,104.00, said point being the westernmost corner of said State of Louisiana State Lease No. 18550; South 53 degrees 48 minutes 59 seconds East 3,021.82 feet to point a having Coordinates of X = 2,686,050.00 and Y = 273,320.00, said point being a southwest corner of said State of Louisiana State Lease No. 18550; and East 925.00 feet to point a having Coordinates of X = 2,686,975.00 and Y = 273,320.00; Thence South 9,990.00 feet to point a having Coordinates of X = 2,686,975.00 and Y = 263,330.00, said point being on the on South line of said Block 45, Main Pass Area, Revised; Thence West 5,655.82 feet on and along said South line of said Block 45, Main Pass Area, Revised, to point a having Coordinates of X = 2,681,319.18 and Y = 263,330.00, said point being on the Louisiana Coast Line, as decreed by the Supreme Court of the United States, as determined by a Special Master appointed therein, in litigation styled United States v. State of Louisiana et al No. 9 Original, in 1975; Thence North 06 degrees 06 minutes 01 seconds West 14,834.00 feet on and along said Louisiana Coast Line to a point having Coordinates of X = 2,679,742.80 and Y = 278,080.00, said point being on the line common to said Block 45, Main Pass Area, Revised, and Block 52, Breton Sound Area; Thence continue North 06 degrees 06 minutes 01 seconds West 1,334.74 feet on and along said Louisiana Coast Line to a point having Coordinates of X = 2,679,600.97 and Y = 279,407.18, said point being the southwest corner of State of Louisiana State Lease No. 20820; Thence South 67 degrees 14 minutes 45 seconds East 1,000.18 feet on and along the southern boundary of said State of Louisiana State Lease No. 20820 to point a having Coordinates of X = 2,680,523.30 and Y = 279,020.34, said point being the southeast corner of said State of Louisiana State Lease No. 20820, said point also being on the western boundary of State of Louisiana State Lease No. 19054; Thence South 15 degrees 16 minutes 08 seconds East 974.75 feet on and along said western boundary of said State of Louisiana State Lease No. 19054 to point a having Coordinates of X = 2,680,780.00 and Y = 278,080.00, said point being the southwest corner of said State of Louisiana State Lease No. 19054, said point also being on said line common to said Block 45, Main Pass Area, Revised, and Block 52, Breton Sound Area; Thence East 5,269.00 feet on and along said line common to said Block 45, Main Pass Area,

Revised, and Block 52, Breton Sound Area, to the Point of Beginning, containing approximately **1,972.27 acres**, all as more particularly outlined on a plat on file in the Office of Mineral Resources, Department of Natural Resources. All bearings, distances and coordinates are based on Louisiana Coordinate System of 1927, (North or South Zone).

NOTE: The above description of the Tract nominated for lease has been provided and corrected, where required, exclusively by the nomination party. Any mineral lease selected from this Tract and awarded by the Louisiana State Mineral and Energy Board shall be without warranty of any kind, either express, implied, or statutory, including, but not limited to, the implied warranties of merchantability and fitness for a particular purpose. Should the mineral lease awarded by the Louisiana State Mineral and Energy Board be subsequently modified, cancelled or abrogated due to the existence of conflicting leases, operating agreements, private claims or other future obligations or conditions which may affect all or any portion of the leased Tract, it shall not relieve the Lessee of the obligation to pay any bonus due thereon to the Louisiana State Mineral and Energy Board, nor shall the Louisiana State Mineral and Energy Board be obligated to refund any consideration paid by the Lessor prior to such modification, cancellation, or abrogation, including, but not limited to, bonuses, rentals and royalties.

NOTE: The State of Louisiana does hereby reserve, and this lease shall be subject to, the imprescriptible right of surface use in the nature of a servitude in favor of the Department of Natural Resources, including its Offices and Commissions, for the sole purpose of implementing, constructing, servicing and maintaining approved coastal zone management and/or restoration projects. Utilization of any and all rights derived under this lease by the mineral lessee, its agents, successors or assigns, shall not interfere with nor hinder the reasonable surface use by the Department of Natural Resources, its Offices or Commissions, as herein above reserved.

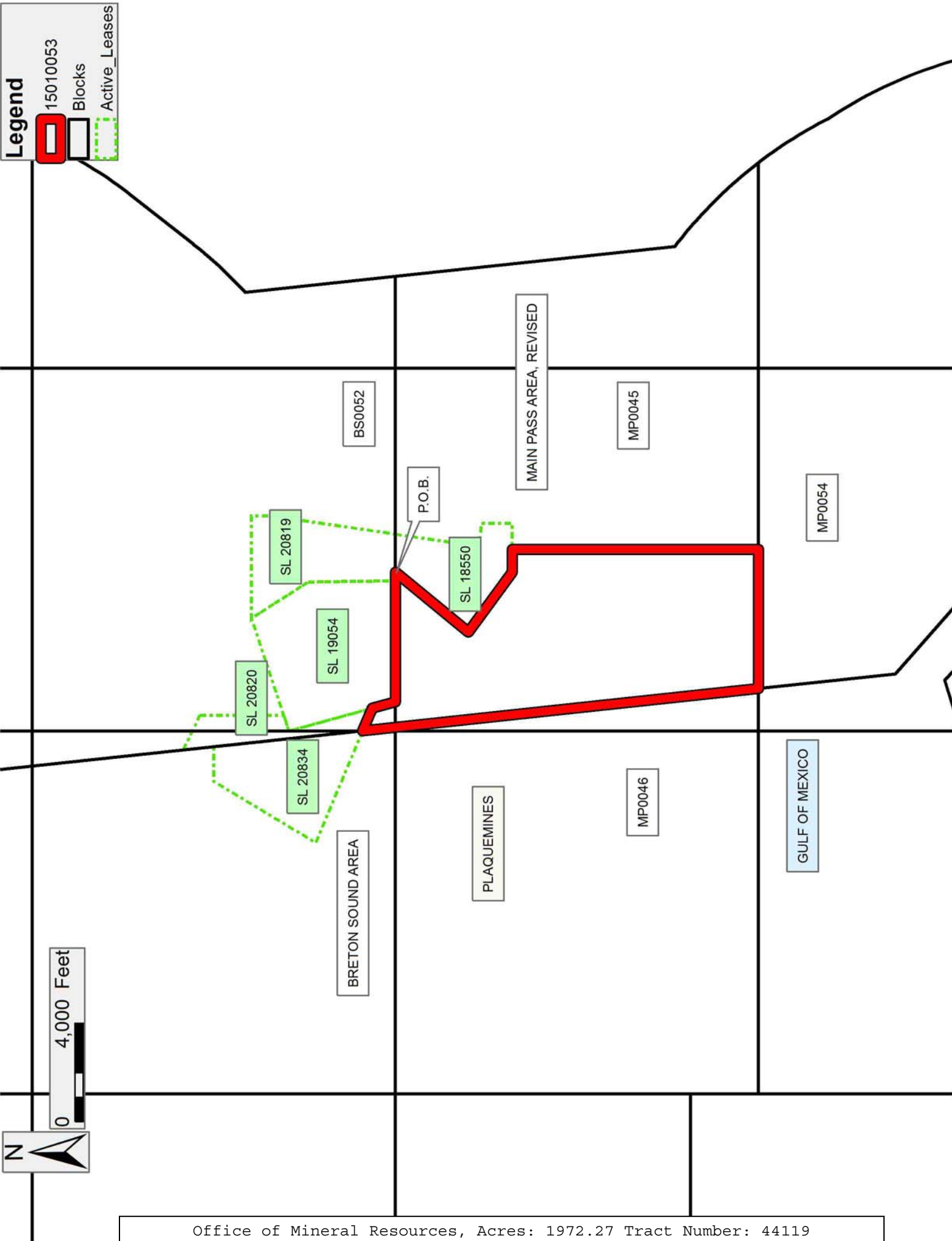
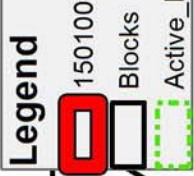
NOTE: This tract is located in an area designated by the Louisiana Legislature or the Wildlife and Fisheries Commission as a Public Oyster Seed Ground, Reservation, or area of Calcasieu or Sabine Lake. Proposed projects occurring in these areas will be evaluated on a case by case basis by Louisiana Department of Wildlife & Fisheries. Modifications to proposed project features including, but not limited to, access routes, well sites, flowlines, and appurtenant structures maybe required by the Louisiana Department of Wildlife and Fisheries. In addition, compensatory mitigation will be required to offset unavoidable habitat impacts.

Applicant: ROBERT A. SCHROEDER, INC.

Bidder	Cash Payment	Price/Acre	Rental	Oil	Gas	Other

Legend

- 15010053
- Blocks
- Active_Leases



TRACT 44120 - Portion of Block 44, Main Pass Area, Revised, Plaquemines Parish, Louisiana

The beds and bottoms of all water bodies belonging to the State of Louisiana located in Block 44, Main Pass Area, Revised, together with any present lands formed by accretion to the shoreline or islands formed therein, located in Plaquemines Parish, Louisiana, owned by and not presently under mineral lease as of January 14, 2015, from the State of Louisiana, the geographical area of which is more fully described as follows: Beginning at a point having Coordinates of X = 2,694,350.00 and Y = 263,330.00, said point being the southwest corner of Block 44, Main Pass Area, Revised; Thence North 14,750.00 feet on and along the West line of said Block 44, Main Pass Area, Revised, to a point having Coordinates of X = 2,694,350.00 and Y = 278,080.00, said point being the northwest corner of said Block 44, Main Pass Area, Revised; Thence East 3,737 feet, more or less, on and along the North line of said Block 44, Main Pass Area, Revised, to a point having a coordinate X = 2,698,087.40 and Y = 278,080.00, said point being on the Three Mile Line; Thence on and along said Three Mile Line the following courses and distances, to wit: Southeasterly 11,430 feet, more or less, to a point having Coordinates of X = 2,699,302.00 and Y = 266,715.00; and Southeasterly 4,809 feet, more or less, along an arc having a radius of 18,240.60 feet and a center located at X = 2,688,234.00 and Y = 252,215.00 to a point having a coordinate of X = 2,702,698.00 and Y = 263,330.00, said point being on the South line of said Block 44, Main Pass Area, Revised; Thence West 8,348 feet, more or less, on and along said South line of said Block 44, Main Pass Area, Revised, to the Point of Beginning, containing approximately **1,661.92 acres, LESS AND EXCEPT** that portion thereof, if any, lying seaward of the line three nautical miles from the coast line of Louisiana, as said three mile line has been decreed by the Supreme Court of the United States, as determined by a Special Master appointed therein, in litigation styled **United States v. State of Louisiana et al No. 9 Original**, in 1975, all as more particularly outlined on a plat in the Office of Mineral Resources, Department of Natural Resources. All bearings, distances and coordinates are based on the Louisiana Coordinate System of 1927, (South Zone).

NOTE: The above description of the Tract nominated for lease has been provided and corrected, where required, exclusively by the nomination party. Any mineral lease selected from this Tract and awarded by the Louisiana State Mineral and Energy Board shall be without warranty of any kind, either express, implied, or statutory, including, but not limited to, the implied warranties of merchantability and fitness for a particular purpose. Should the mineral lease awarded by the Louisiana State Mineral and Energy Board be subsequently modified, cancelled or abrogated due to the existence of conflicting leases, operating agreements, private claims or other future obligations or conditions which may affect all or any portion of the leased Tract, it shall not relieve the Lessee of the obligation to pay any bonus due thereon to the Louisiana State Mineral and Energy Board, nor shall the Louisiana State Mineral and Energy Board be obligated to refund any consideration paid by the Lessor prior to such

modification, cancellation, or abrogation, including, but not limited to, bonuses, rentals and royalties.

NOTE: The State of Louisiana does hereby reserve, and this lease shall be subject to, the imprescriptible right of surface use in the nature of a servitude in favor of the Department of Natural Resources, including its Offices and Commissions, for the sole purpose of implementing, constructing, servicing and maintaining approved coastal zone management and/or restoration projects. Utilization of any and all rights derived under this lease by the mineral lessee, its agents, successors or assigns, shall not interfere with nor hinder the reasonable surface use by the Department of Natural Resources, its Offices or Commissions, as herein above reserved.

NOTE: This tract is located in an area designated by the Louisiana Legislature or the Wildlife and Fisheries Commission as a Public Oyster Seed Ground, Reservation, or area of Calcasieu or Sabine Lake. Proposed projects occurring in these areas will be evaluated on a case by case basis by Louisiana Department of Wildlife & Fisheries. Modifications to proposed project features including, but not limited to, access routes, well sites, flowlines, and appurtenant structures maybe required by the Louisiana Department of Wildlife and Fisheries. In addition, compensatory mitigation will be required to offset unavoidable habitat impacts.

Applicant: ROBERT A. SCHROEDER, INC.

Bidder	Cash Payment	Price/Acre	Rental	Oil	Gas	Other

Legend

 15010055

 Blocks



TRACT 44121 - Portion of Block 45, Main Pass Area, Revised, Plaquemines Parish, Louisiana

The beds and bottoms of all water bodies belonging to the State of Louisiana located in Block 45, Main Pass Area, Revised, together with any present lands formed by accretion to the shoreline or islands formed therein, located in Plaquemines Parish, Louisiana, owned by and not presently under mineral lease as of January 14, 2015, from the State of Louisiana, the geographical area of which is more fully described as follows: Beginning at a point having Coordinates of X = 2,694,350.00 and Y = 263,330.00, said point being the southeast corner of Block 45, Main Pass Area, Revised; Thence West 7,375.00 feet on and along the South line of said Block 45, Main Pass Area, Revised, to a point having Coordinates of X = 2,686,975.00 and Y = 263,330.00; Thence North 9,990.00 feet to a point having Coordinates of X = 2,686,975.00 and Y = 273,320.00, said point being on the southern boundary of State of Louisiana State Lease No. 18550; Thence on and along the southern and eastern boundaries of said State of Louisiana State Lease No. 18550, the following courses and distances, to wit: East 1,075.00 feet to a point having Coordinates of X = 2,688,050.00 and Y = 273,320.00, said point being the southernmost southeast corner of said State of Louisiana State Lease No. 18550; and North 1,247.43 feet to a point having Coordinates of X = 2,688,050.00 and Y = 274,567.43, said point being the southernmost northeast corner of said State of Louisiana State Lease No. 18550, said point also being on the southern boundary of State of Louisiana State Lease No. 17863; Thence on and along the southern and eastern boundaries of said State of Louisiana State Lease No. 17863, the following courses and distances, to wit: South 82 degrees 03 minutes 26 seconds East 1,211.62 feet to a point having Coordinates of X = 2,689,250.00 and Y = 274,400.00, said point being a southeast corner of said State of Louisiana State Lease No. 17863; and North 35 degrees 14 minutes 31 seconds East 4,505.82 feet to a point having Coordinates of X = 2,691,850.00 and Y = 278,080.00, said point being the northeast corner of said State of Louisiana State Lease No. 17863, said point also being on the North line of said Block 45, Main Pass Area, Revised; Thence East 2,500.00 feet on and along said North line of said Block 45, Main Pass Area, Revised, to a point having Coordinates of X = 2,694,350.00 and Y = 278,080.00, said point being the northeast corner of said Block 45, Main Pass Area, Revised; Thence South 14,750.00 feet on and along the East line of said Block 45, Main Pass Area, Revised, to the Point of Beginning, containing approximately **2,170.91 acres**, all as more particularly outlined on a plat on file in the Office of Mineral Resources, Department of Natural Resources. All bearings, distances and coordinates are based on Louisiana Coordinate System of 1927, (North or South Zone).

NOTE: The above description of the Tract nominated for lease has been provided and corrected, where required, exclusively by the nomination party. Any mineral lease selected from this Tract and awarded by the Louisiana State Mineral and Energy Board shall be without warranty of any kind, either express, implied, or statutory, including, but not limited

to, the implied warranties of merchantability and fitness for a particular purpose. Should the mineral lease awarded by the Louisiana State Mineral and Energy Board be subsequently modified, cancelled or abrogated due to the existence of conflicting leases, operating agreements, private claims or other future obligations or conditions which may affect all or any portion of the leased Tract, it shall not relieve the Lessee of the obligation to pay any bonus due thereon to the Louisiana State Mineral and Energy Board, nor shall the Louisiana State Mineral and Energy Board be obligated to refund any consideration paid by the Lessor prior to such modification, cancellation, or abrogation, including, but not limited to, bonuses, rentals and royalties.

NOTE: The State of Louisiana does hereby reserve, and this lease shall be subject to, the imprescriptible right of surface use in the nature of a servitude in favor of the Department of Natural Resources, including its Offices and Commissions, for the sole purpose of implementing, constructing, servicing and maintaining approved coastal zone management and/or restoration projects. Utilization of any and all rights derived under this lease by the mineral lessee, its agents, successors or assigns, shall not interfere with nor hinder the reasonable surface use by the Department of Natural Resources, its Offices or Commissions, as herein above reserved.

NOTE: This tract is located in an area designated by the Louisiana Legislature or the Wildlife and Fisheries Commission as a Public Oyster Seed Ground, Reservation, or area of Calcasieu or Sabine Lake. Proposed projects occurring in these areas will be evaluated on a case by case basis by Louisiana Department of Wildlife & Fisheries. Modifications to proposed project features including, but not limited to, access routes, well sites, flowlines, and appurtenant structures maybe required by the Louisiana Department of Wildlife and Fisheries. In addition, compensatory mitigation will be required to offset unavoidable habitat impacts.

Applicant: ROBERT A. SCHROEDER, INC.

Bidder	Cash Payment	Price/Acre	Rental	Oil	Gas	Other

Legend

-  15010054
-  Blocks
-  Active_Leases



TRACT 44122 - Portion of Block 55, Main Pass Area, Revised, Plaquemines Parish, Louisiana

The beds and bottoms of all water bodies belonging to the State of Louisiana located in Block 55, Main Pass Area, Revised, together with any present lands formed by accretion to the shoreline or islands formed therein, located in Plaquemines Parish, Louisiana, owned by and not presently under mineral lease as of January 14, 2015, from the State of Louisiana, the geographical area of which is more fully described as follows: Beginning at a point having Coordinates of X = 2,694,350.00 and Y = 263,330.00, said point being the northwest corner of Block 55, Main Pass Area, Revised; Thence East 8,348 feet, more or less, on and along the North line of said Block 55, Main Pass Area, Revised, to a point having a coordinate of X = 2,702,698.00 and Y = 263,330.00, said point being on the Three Mile Line; Thence on and along said Three Mile Line the following courses and distances, to wit: Southeasterly 3,314 feet, more or less, on and along an arc having a radius of 18,240.60 feet and a center located at a coordinate of X = 2,688,235.00 and Y = 252,215.00; to a point having a coordinate of X = 2,704,468.00 and Y = 260.534.00, continuing Southeasterly 5,101 feet, more or less, along an the arc having a radius of 18,240.60 feet and a center located at a coordinate of X = 2,689,305.00 and Y = 250,395.00; to a point having a coordinate of X = 2,706,677.00 and Y = 255,955.00, Thence West 12,327 feet, more or less, to a point having Coordinates of X = 2,694,350.00 and Y = 255,955.00, said point being on the West line of said Block 55, Main Pass Area, Revised; Thence North 7,375.00 feet on and along said West line of said Block 55, Main Pass Area, Revised, to the Point of Beginning, containing approximately **1,790.04 acres, LESS AND EXCEPT** that portion thereof, if any, lying seaward of the line three nautical miles from the coast line of Louisiana, as said three mile line has been decreed by the Supreme Court of the United States, as determined by a Special Master appointed therein, in litigation styled **United States v. State of Louisiana et al No. 9 Original**, in 1975, all as more particularly outlined on a plat in the Office of Mineral Resources, Department of Natural Resources. All bearings, distances and coordinates are based on the Louisiana Coordinate System of 1927, (South Zone).

NOTE: The above description of the Tract nominated for lease has been provided and corrected, where required, exclusively by the nomination party. Any mineral lease selected from this Tract and awarded by the Louisiana State Mineral and Energy Board shall be without warranty of any kind, either express, implied, or statutory, including, but not limited to, the implied warranties of merchantability and fitness for a particular purpose. Should the mineral lease awarded by the Louisiana State Mineral and Energy Board be subsequently modified, cancelled or abrogated due to the existence of conflicting leases, operating agreements, private claims or other future obligations or conditions which may affect all or any portion of the leased Tract, it shall not relieve the Lessee of the obligation to pay any bonus due thereon to the Louisiana State Mineral and Energy Board, nor shall the Louisiana State Mineral and Energy Board be

obligated to refund any consideration paid by the Lessor prior to such modification, cancellation, or abrogation, including, but not limited to, bonuses, rentals and royalties.

NOTE: The State of Louisiana does hereby reserve, and this lease shall be subject to, the imprescriptible right of surface use in the nature of a servitude in favor of the Department of Natural Resources, including its Offices and Commissions, for the sole purpose of implementing, constructing, servicing and maintaining approved coastal zone management and/or restoration projects. Utilization of any and all rights derived under this lease by the mineral lessee, its agents, successors or assigns, shall not interfere with nor hinder the reasonable surface use by the Department of Natural Resources, its Offices or Commissions, as herein above reserved.

NOTE: This tract is located in an area designated by the Louisiana Legislature or the Wildlife and Fisheries Commission as a Public Oyster Seed Ground, Reservation, or area of Calcasieu or Sabine Lake. Proposed projects occurring in these areas will be evaluated on a case by case basis by Louisiana Department of Wildlife & Fisheries. Modifications to proposed project features including, but not limited to, access routes, well sites, flowlines, and appurtenant structures maybe required by the Louisiana Department of Wildlife and Fisheries. In addition, compensatory mitigation will be required to offset unavoidable habitat impacts.

Applicant: ROBERT A. SCHROEDER, INC.

Bidder	Cash Payment	Price/Acre	Rental	Oil	Gas	Other

Legend

 15010056

 Blocks



TRACT 44123 - Portion of Block 54, Main Pass Area, Revised, Plaquemines Parish, Louisiana

The beds and bottoms of all water bodies belonging to the State of Louisiana located in Block 54, Main Pass Area, Revised, together with any present lands formed by accretion to the shoreline or islands formed therein, located in Plaquemines Parish, Louisiana, owned by and not presently under mineral lease as of January 14, 2015, from the State of Louisiana, the geographical area of which is more fully described as follows: Beginning at a point having Coordinates of X = 2,694,350.00 and Y = 263,330.00, said point being the northeast corner Block 54, Main Pass Area, Revised; Thence South 7,375.00 feet on and along the East line of said Block 54, Main Pass Area, Revised, to point a having Coordinates of X = 2,694,350.00 and Y = 255,955.00; Thence West 10,381.57 feet to point a having Coordinates of X = 2,683,968.43 and Y = 255,955.00, said point being on the Louisiana Coast Line, as decreed by the Supreme Court of the United States, as determined by a Special Master appointed therein, in litigation styled United States v. State of Louisiana et al No. 9 Original, in 1975; Thence on and along said Louisiana Coast Line the following courses and distances, to wit: North 48 degrees 45 minutes 46 seconds West 2,730.67.00 feet to a point having Coordinates of X = 2,681,915.00 and Y = 257,750.00; and North 06 degrees 06 minutes 01 seconds West 5,606.75 feet to a point having Coordinates of X = 2,681,319.18 and Y = 263,330.00, said point being on the North line of said Block 54, Main Pass Area, Revised; Thence East 13,030.82 feet on and along said the North line of said Block 54, Main Pass Area, Revised, to the Point of Beginning, containing approximately **2,101.03 acres**, all as more particularly outlined on a plat on file in the Office of Mineral Resources, Department of Natural Resources. All bearings, distances and coordinates are based on Louisiana Coordinate System of 1927, (North or South Zone).

NOTE: The above description of the Tract nominated for lease has been provided and corrected, where required, exclusively by the nomination party. Any mineral lease selected from this Tract and awarded by the Louisiana State Mineral and Energy Board shall be without warranty of any kind, either express, implied, or statutory, including, but not limited to, the implied warranties of merchantability and fitness for a particular purpose. Should the mineral lease awarded by the Louisiana State Mineral and Energy Board be subsequently modified, cancelled or abrogated due to the existence of conflicting leases, operating agreements, private claims or other future obligations or conditions which may affect all or any portion of the leased Tract, it shall not relieve the Lessee of the obligation to pay any bonus due thereon to the Louisiana State Mineral and Energy Board, nor shall the Louisiana State Mineral and Energy Board be obligated to refund any consideration paid by the Lessor prior to such modification, cancellation, or abrogation, including, but not limited to, bonuses, rentals and royalties.

NOTE: The State of Louisiana does hereby reserve, and this lease shall be subject to, the imprescriptible right of surface use in the nature of a servitude in favor of the Department of Natural Resources, including its Offices and Commissions, for the sole purpose of implementing, constructing, servicing and maintaining approved coastal zone management and/or restoration projects. Utilization of any and all rights derived under this lease by the mineral lessee, its agents, successors or assigns, shall not interfere with nor hinder the reasonable surface use by the Department of Natural Resources, its Offices or Commissions, as herein above reserved.

NOTE: This tract is located in an area designated by the Louisiana Legislature or the Wildlife and Fisheries Commission as a Public Oyster Seed Ground, Reservation, or area of Calcasieu or Sabine Lake. Proposed projects occurring in these areas will be evaluated on a case by case basis by Louisiana Department of Wildlife & Fisheries. Modifications to proposed project features including, but not limited to, access routes, well sites, flowlines, and appurtenant structures maybe required by the Louisiana Department of Wildlife and Fisheries. In addition, compensatory mitigation will be required to offset unavoidable habitat impacts.

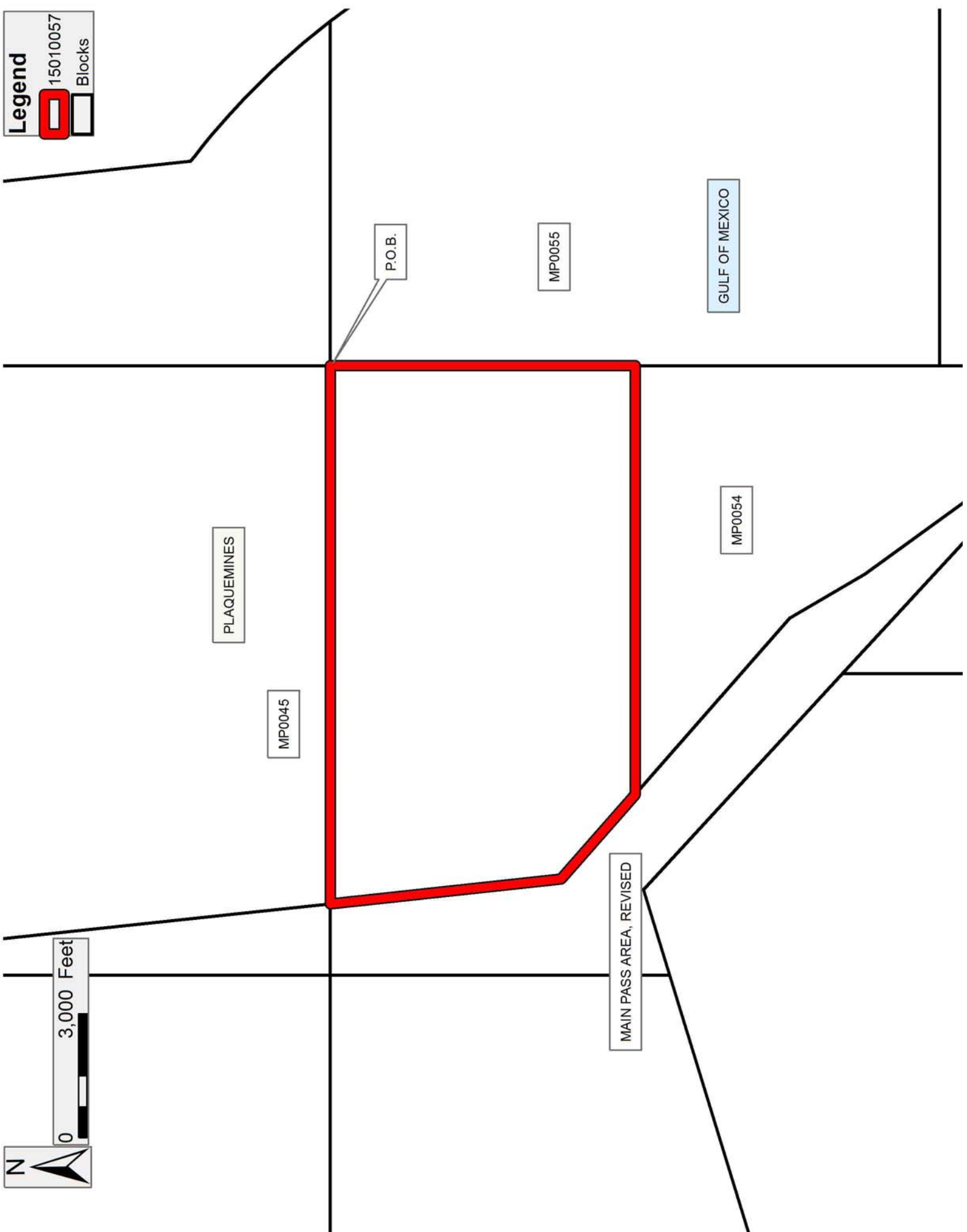
Applicant: ROBERT A. SCHROEDER, INC.

Bidder	Cash Payment	Price/Acre	Rental	Oil	Gas	Other

Legend

15010057

Blocks



0 3,000 Feet

N

TRACT 44124 - Portion of Blocks 54, and 55, Main Pass Area, Revised, Plaquemines Parish, Louisiana

The beds and bottoms of all water bodies belonging to the State of Louisiana located in Blocks 54, and 55, Main Pass Area, Revised, together with any present lands formed by accretion to the shoreline or islands formed therein, located in Plaquemines Parish, Louisiana, owned by and not presently under mineral lease as of January 14, 2015, from the State of Louisiana, the geographical area of which is more fully described as follows: Beginning at a point having Coordinates of X = 2,694,350.00 and Y = 248,580.00, said point being the southwest corner of Block 55, Main Pass Area, Revised, said point also being on the West line of Block 54, Main Pass Area, Revised; Thence West 3,728.25 feet to point a having Coordinates of X = 269,062,175.00 and Y = 248,580.00 said point being on the Louisiana Coast Line, as decreed by the Supreme Court of the United States, as determined by a Special Master appointed therein, in litigation styled United States v. State of Louisiana et al No. 9 Original, in 1975; Thence on and along said Louisiana Coast Line the following courses and distances, to wit: North 35 degrees 57 minutes 37 seconds West 2,242.33 feet to a point having Coordinates of X = 2,689,305.00 and Y = 250,395.00; North 30 degrees 27 minutes 11 seconds West 2,112.01 feet to a point having Coordinates of X = 2,688,234.00 and Y = 252,215.00; and North 48 degrees 45 minutes 53 seconds West 5,672.98 feet to a point having Coordinates of X = 2,683,968.01 and Y = 255,955.00; Thence East 10,381.57 feet to point a having Coordinates of X = 2,694,350.00 and Y = 255,955.00, said point being on the line common to said Blocks 54 and 55, Main Pass Area, Revised; Thence East 6,163.73 feet to point a having Coordinates of X = 2,700,513.73 and Y = 255,955.00; Thence South 7,375.00 feet to point a having Coordinates of X = 2,700,513.73 and Y = 248,580.00, said point being on the South line of said Block 55, Main Pass Area, Revised; Thence West 6,163.73 feet on and along said South line of said Block 55, Main Pass Area, Revised, to the Point of Beginning, containing approximately **2,167.65 acres**, all as more particularly outlined on a plat on file in the Office of Mineral Resources, Department of Natural Resources. All bearings, distances and coordinates are based on Louisiana Coordinate System of 1927, (North or South Zone).

NOTE: The above description of the Tract nominated for lease has been provided and corrected, where required, exclusively by the nomination party. Any mineral lease selected from this Tract and awarded by the Louisiana State Mineral and Energy Board shall be without warranty of any kind, either express, implied, or statutory, including, but not limited to, the implied warranties of merchantability and fitness for a particular purpose. Should the mineral lease awarded by the Louisiana State Mineral and Energy Board be subsequently modified, cancelled or abrogated due to the existence of conflicting leases, operating agreements, private claims or other future obligations or conditions which may affect all or any portion of the leased Tract, it shall not relieve the Lessee of the obligation to pay any bonus due thereon to the Louisiana State Mineral and Energy Board, nor shall the Louisiana State Mineral and Energy Board be

obligated to refund any consideration paid by the Lessor prior to such modification, cancellation, or abrogation, including, but not limited to, bonuses, rentals and royalties.

NOTE: The State of Louisiana does hereby reserve, and this lease shall be subject to, the imprescriptible right of surface use in the nature of a servitude in favor of the Department of Natural Resources, including its Offices and Commissions, for the sole purpose of implementing, constructing, servicing and maintaining approved coastal zone management and/or restoration projects. Utilization of any and all rights derived under this lease by the mineral lessee, its agents, successors or assigns, shall not interfere with nor hinder the reasonable surface use by the Department of Natural Resources, its Offices or Commissions, as herein above reserved.

NOTE: This tract is located in an area designated by the Louisiana Legislature or the Wildlife and Fisheries Commission as a Public Oyster Seed Ground, Reservation, or area of Calcasieu or Sabine Lake. Proposed projects occurring in these areas will be evaluated on a case by case basis by Louisiana Department of Wildlife & Fisheries. Modifications to proposed project features including, but not limited to, access routes, well sites, flowlines, and appurtenant structures maybe required by the Louisiana Department of Wildlife and Fisheries. In addition, compensatory mitigation will be required to offset unavoidable habitat impacts.

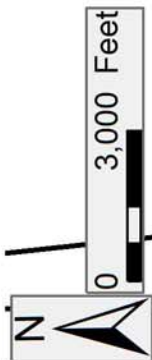
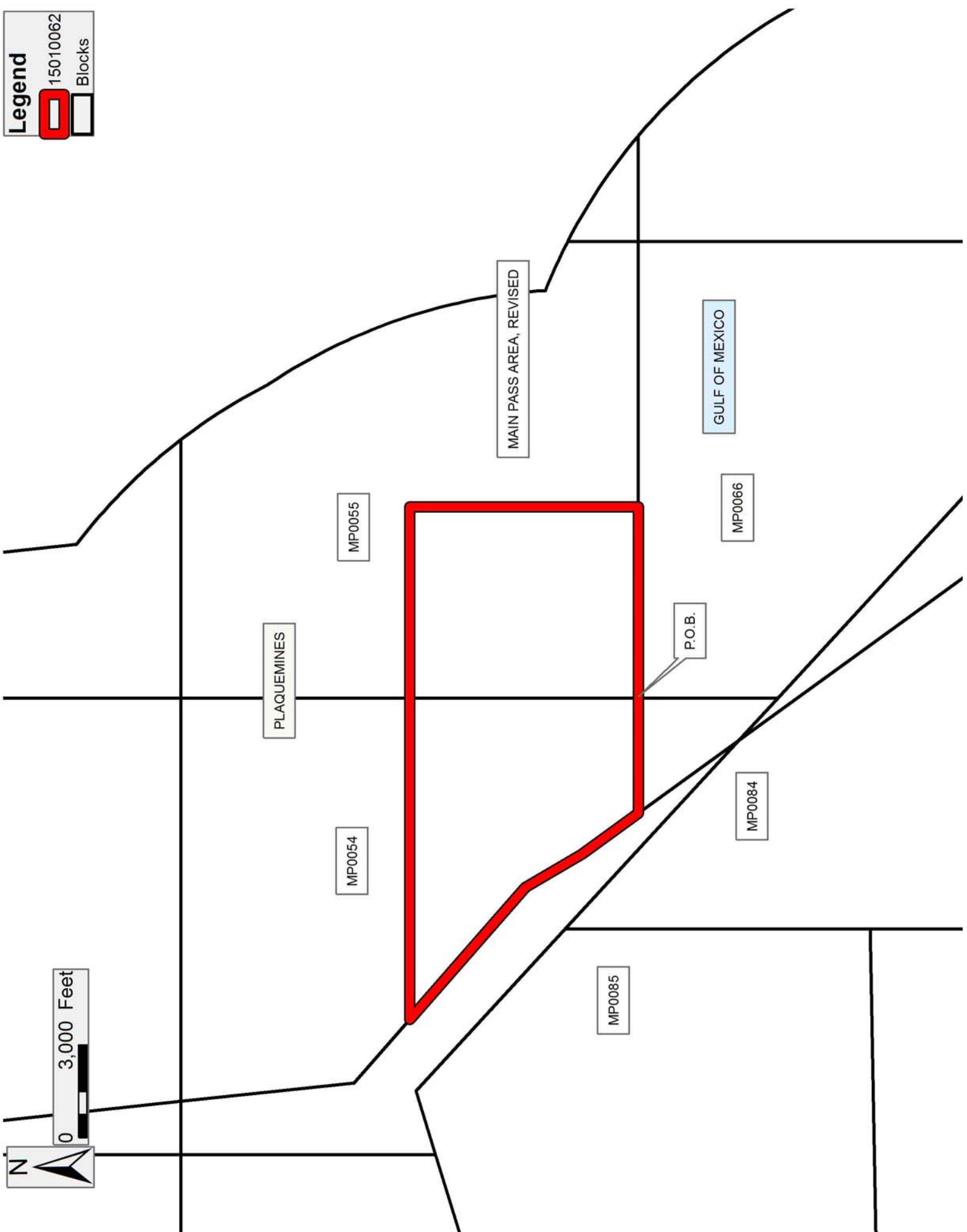
Applicant: ROBERT A. SCHROEDER, INC.

Bidder	Cash Payment	Price/Acre	Rental	Oil	Gas	Other

Legend

15010062

Blocks



TRACT 44125 - Portion of Block 121, South Timbalier Area, Revised, Terrebonne Parish, Louisiana

The beds and bottoms of all water bodies belonging to the State of Louisiana located in Block 121, South Timbalier Area, Revised, together with any present lands formed by accretion to the shoreline or islands formed therein, located in Terrebonne Parish, Louisiana, owned by and not presently under mineral lease as of January 14, 2015, from the State of Louisiana, the geographical area of which is more fully described as follows: Beginning at a point on the Louisiana Coastline, as decreed by the Supreme Court of the United States, as determined by a Special Master appointed therein, in litigation styled *United States v. State of Louisiana et al No. 9 Original*, in 1975, having Coordinates of X = 2,242,301.31 and Y = 151,416.19; thence along the said Coastline the following: Northeasterly on a straight line to a point having Coordinates of X = 2,253,306 and Y = 154,102 and Southeasterly on a straight line to a point having Coordinates of X = 2,253,796.92 and Y = 153,459.40; thence South 00 degrees 08 minutes 59 seconds West 9,437.07 feet to the Northwest corner of State Lease No. 21206 and the Northeast corner of State Lease No. 21137 having Coordinates of X = 2,253,772.25 and Y = 144,022.36; thence along the boundaries of said State Lease No. 21137 the following courses: West 1,133.75 feet to a point having Coordinates of X = 2,252,638.50 and Y = 144,022.36, North 00 degrees 02 minutes 47 seconds East 1,761.04 feet to a point having Coordinates of X = 2,252,639.93 and Y = 145,783.40 and South 85 degrees 48 minutes 49 seconds West 641.64 feet to a point on its North boundary and the Southeast corner of State Lease No. 21138 having Coordinates of X = 2,252,000.00 and Y = 145,736.56; thence along the boundaries of said State Lease No. 21138 the following courses: North 640.16 feet to a point having Coordinates of X = 2,252,000.00 and Y = 146,376.72, South 89 degrees 38 minutes 43 seconds West 2,728.55 feet to a point having Coordinates of X = 2,249,271.50 and Y = 146,359.83 and South 1,875.19 feet to its Southwest corner and the Northwest corner of State Lease No. 21207 having Coordinates of X = 2,249,271.50 and Y = 144,484.64; thence South 51 degrees 39 minutes 20 seconds East 2,164.20 feet along the southern boundary of said State Lease No. 21207 to its southern tip and a point on the west boundary of said State Lease No. 21137 having Coordinates of X = 2,250,968.88 and Y = 143,142.00; thence South 00 degrees 05 minutes 42 seconds East 1,579.66 feet along the west boundary of said State Lease No. 21137 to its Southwest corner having Coordinates of X = 2,250,971.50 and Y = 141,562.34; thence West 8,670.19 feet to a point having Coordinates of X = 2,242,301.31 and Y = 141,562.34; thence North 1,665.84 feet to a point on the south boundary of State Lease No. 21420 having Coordinates of X = 2,242,301.31 and Y = 143,228.18; thence along the boundaries of said State Lease No. 21420 the following courses: South 89 degrees 52 minutes 44 seconds East 3,395.70 feet to a point having Coordinates of X = 2,245,697.00 and Y = 143,221.00, North 00 degrees 24 minutes 32 seconds East 2,802.07 feet to a point having Coordinates of X = 2,245,717.00 and Y = 146,023.00 and South 89 degrees 37 minutes 46 seconds West 3,415.77 feet to a point having Coordinates of X = 2,242,301.31 and Y = 146,000.90;

thence North 5,415.28 feet to the point of beginning, containing approximately **2,405.52 acres**, all as more particularly outlined on a plat on file in the Office of Mineral Resources, Department of Natural Resources. All bearings, distances and coordinates are based on Louisiana Coordinate System of 1927, (North or South Zone).

NOTE: The above description of the Tract nominated for lease has been provided and corrected, where required, exclusively by the nomination party. Any mineral lease selected from this Tract and awarded by the Louisiana State Mineral and Energy Board shall be without warranty of any kind, either express, implied, or statutory, including, but not limited to, the implied warranties of merchantability and fitness for a particular purpose. Should the mineral lease awarded by the Louisiana State Mineral and Energy Board be subsequently modified, cancelled or abrogated due to the existence of conflicting leases, operating agreements, private claims or other future obligations or conditions which may affect all or any portion of the leased Tract, it shall not relieve the Lessee of the obligation to pay any bonus due thereon to the Louisiana State Mineral and Energy Board, nor shall the Louisiana State Mineral and Energy Board be obligated to refund any consideration paid by the Lessor prior to such modification, cancellation, or abrogation, including, but not limited to, bonuses, rentals and royalties.




NOTE: The State of Louisiana does hereby reserve, and this lease shall be subject to, the imprescriptible right of surface use in the nature of a servitude in favor of the Department of Natural Resources, including its Offices and Commissions, for the sole purpose of implementing, constructing, servicing and maintaining approved coastal zone management and/or restoration projects. Utilization of any and all rights derived under this lease by the mineral lessee, its agents, successors or assigns, shall not interfere with nor hinder the reasonable surface use by the Department of Natural Resources, its Offices or Commissions, as herein above reserved.

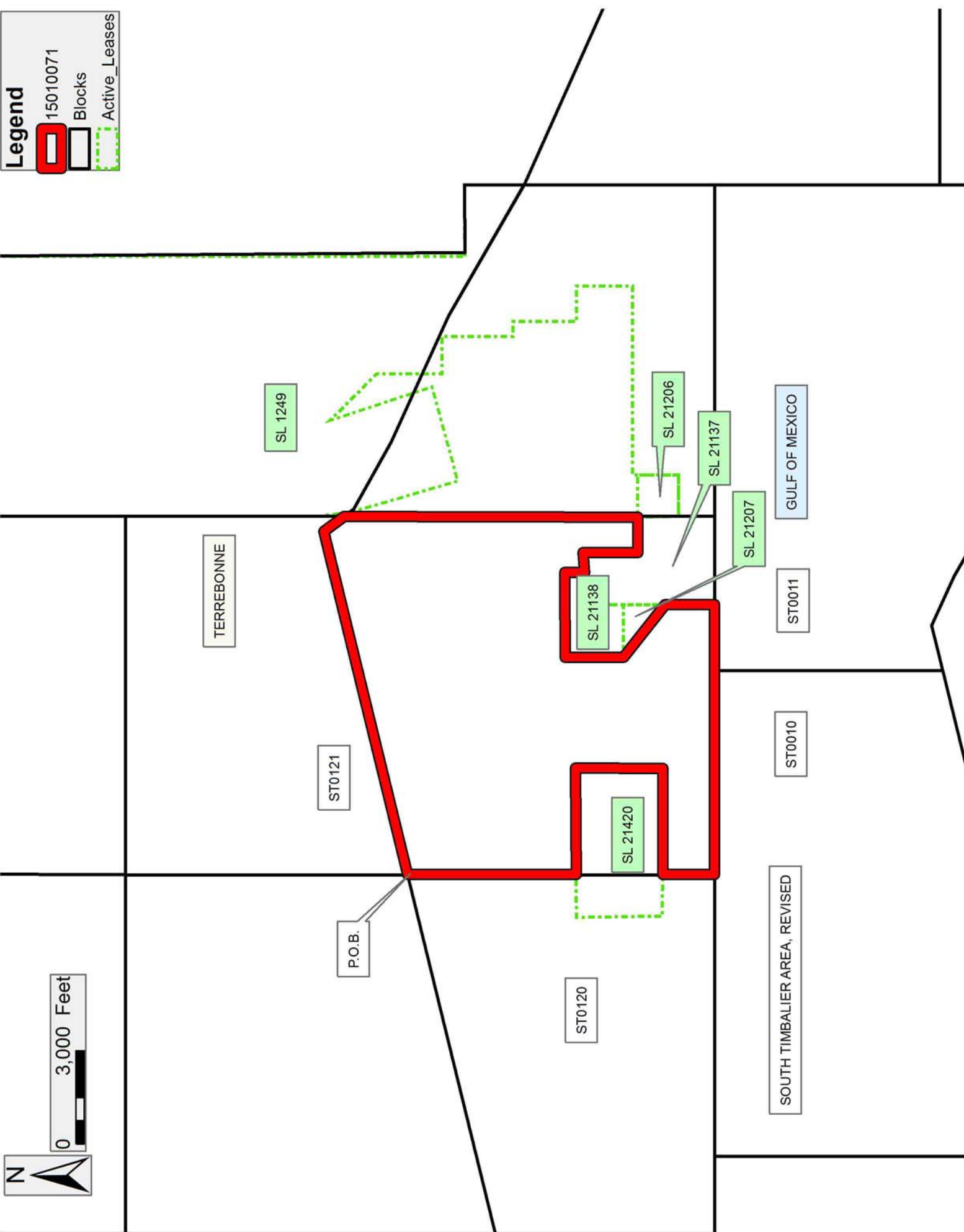
NOTE: It appears, according to our records, that a portion of this Tract is located within the restrictive safety fairway area as set out by the Corps of Engineers, U.S. Army and/or the restrictive anchorage area as set out by the U.S. Coast Guard.

Applicant: CYPRESS ENERGY CORPORATION

Bidder	Cash Payment	Price/Acre	Rental	Oil	Gas	Other

Legend

-  15010071
-  Blocks
-  Active_Leases



TRACT 44126 - Portion of Blocks 121, and 122, South Timbalier Area, Revised, Terrebonne Parish, Louisiana

The beds and bottoms of all water bodies belonging to the State of Louisiana located in Blocks 121, and 122, South Timbalier Area, Revised, together with any present lands formed by accretion to the shoreline or islands formed therein, located in Terrebonne Parish, Louisiana, owned by and not presently under mineral lease as of January 14, 2015, from the State of Louisiana, the geographical area of which is more fully described as follows: Beginning at the Northeast corner of State Lease No. 21206 having Coordinates of X = 2,255,128.04 and Y = 144,022.36; thence West 1,355.79 feet along the North boundary of said State Lease No. 21206 to its Northwest corner and the Northeast corner of State Lease No. 21137 having Coordinates of X = 2,253,772.25 and Y = 144,022.36; thence North 00 degrees 08 minutes 59 seconds East 9,437.07 feet to a point on the Louisiana Coastline, as decreed by the Supreme Court of the United States, as determined by a Special Master appointed therein, in litigation styled *United States v. State of Louisiana et al No. 9 Original*, in 1975, having Coordinates of X = 2,253,796.92 and Y = 153,459.40; thence Southeasterly on a straight line to point having Coordinates of X = 2,253,964.83 and Y = 153,239.62, also being a point on the West boundary of said State Lease No. 1249; thence along the boundaries of said State Lease No. 1249 the following courses: South 09 degrees 41 minutes 15 seconds East 268.45 feet to a point having Coordinates of X = 2,254,010.00 and Y = 152,975.00, South 16 degrees 17 minutes 29 seconds East 3,297.96 feet to a point having Coordinates of X = 2,254,935.16 and Y = 149,809.46 and North 74 degrees 44 minutes 41 seconds East 999.81 feet to a point having Coordinates of X = 2,255,899.74 and Y = 150,072.53, North 74 degrees 44 minutes 41 seconds East 2,135.69 feet to a point having Coordinates of X = 2,257,960.18 and Y = 150,634.47 and North 18 degrees 14 minutes 36 seconds West 627.22 feet to a point on the Louisiana Coastline, as decreed by the Supreme Court of the United States, as determined by a Special Master appointed therein, in litigation styled *United States v. State of Louisiana et al No. 9 Original*, in 1975, having Coordinates of X = 2,257,763.82 and Y = 151,230.16; thence Southeasterly on a straight line to point having Coordinates of X = 2,258,386.02 and Y = 150,946.98, also being a point on the West boundary of said State Lease No. 1249; thence along the boundaries of said State Lease No. 1249 the following courses: South 641.98 feet to a point having Coordinates of X = 2,258,386.02 and Y = 150,305.00, East 1,200.00 feet to a point having Coordinates of X = 2,259,586.02 and Y = 150,305.00, South 2,280.00 feet to a point having Coordinates of X = 2,259,586.02 and Y = 148,025.00, East 480.00 feet to a point having Coordinates of X = 2,260,066.02 and Y = 145,025.00, South 2,040.00 feet to a point having Coordinates of X = 2,260,066.02 and Y = 145,985.00, East 1,140.00 feet to a point having Coordinates of X = 2,261,206.02 and Y = 145,985.00, South 1,791.47 feet to a point having Coordinates of X = 2,261,206.02 and Y = 144,193.53, West 6,077.98 feet to a point having Coordinates of X = 2,255,128.04 and Y = 144,193.53 and South 171.17 feet to the point of beginning, containing approximately **949.55 acres**, all as more particularly outlined on a plat on file in the

Office of Mineral Resources, Department of Natural Resources. All bearings, distances and coordinates are based on Louisiana Coordinate System of 1927, (North or South Zone).

NOTE: The above description of the Tract nominated for lease has been provided and corrected, where required, exclusively by the nomination party. Any mineral lease selected from this Tract and awarded by the Louisiana State Mineral and Energy Board shall be without warranty of any kind, either express, implied, or statutory, including, but not limited to, the implied warranties of merchantability and fitness for a particular purpose. Should the mineral lease awarded by the Louisiana State Mineral and Energy Board be subsequently modified, cancelled or abrogated due to the existence of conflicting leases, operating agreements, private claims or other future obligations or conditions which may affect all or any portion of the leased Tract, it shall not relieve the Lessee of the obligation to pay any bonus due thereon to the Louisiana State Mineral and Energy Board, nor shall the Louisiana State Mineral and Energy Board be obligated to refund any consideration paid by the Lessor prior to such modification, cancellation, or abrogation, including, but not limited to, bonuses, rentals and royalties.

NOTE: The State of Louisiana does hereby reserve, and this lease shall be subject to, the imprescriptible right of surface use in the nature of a servitude in favor of the Department of Natural Resources, including its Offices and Commissions, for the sole purpose of implementing, constructing, servicing and maintaining approved coastal zone management and/or restoration projects. Utilization of any and all rights derived under this lease by the mineral lessee, its agents, successors or assigns, shall not interfere with nor hinder the reasonable surface use by the Department of Natural Resources, its Offices or Commissions, as herein above reserved.

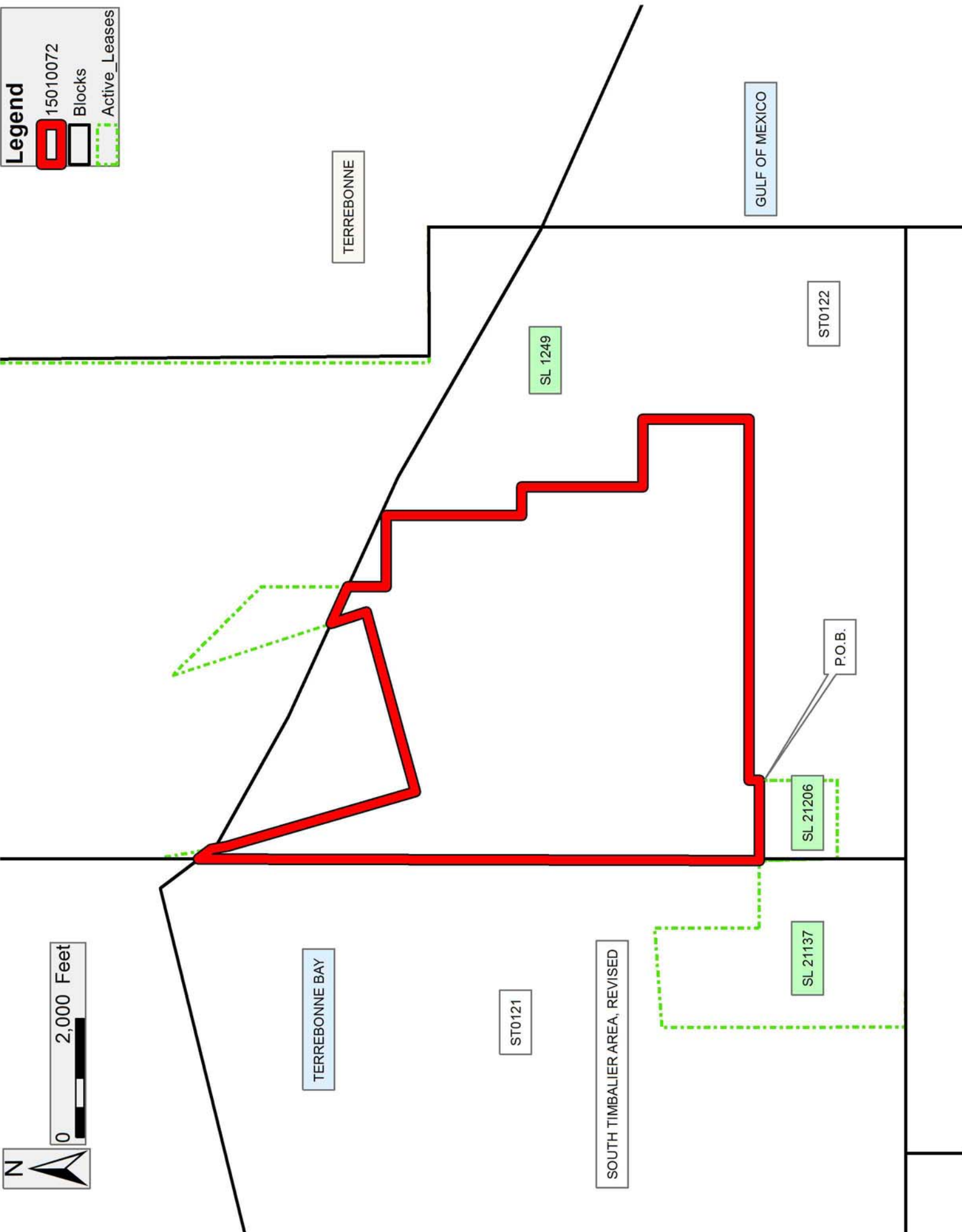
NOTE: It appears, according to our records, that a portion of this Tract is located within the restrictive safety fairway area as set out by the Corps of Engineers, U.S. Army and/or the restrictive anchorage area as set out by the U.S. Coast Guard.

Bidder	Cash Payment	Price/Acre	Rental	Oil	Gas	Other

Applicant: CYPRESS ENERGY CORPORATION

Legend

- 15010072
- Blocks
- Active_Leases



TRACT 44127 - Portion of Blocks 120, and 121, South Timbalier Area, Revised, Terrebonne Parish, Louisiana

The beds and bottoms of all water bodies belonging to the State of Louisiana located in Blocks 120, and 121, South Timbalier Area, Revised, together with any present lands formed by accretion to the shoreline or islands formed therein, located in Terrebonne Parish, Louisiana, owned by and not presently under mineral lease as of January 14, 2015, from the State of Louisiana, the geographical area of which is more fully described as follows: Beginning at a point on the Louisiana Coastline, as decreed by the Supreme Court of the United States, as determined by a Special Master appointed therein, in litigation styled *United States v. State of Louisiana et al No. 9 Original*, in 1975, having Coordinates of X = 2,231,206.73 and Y = 148,708.44; thence along the said Coastline Northeasterly on a straight line to a point having Coordinates of X = 2,242,301.31 and Y = 151,416.19; thence South 5,415.28 feet to a point on north boundary of State Lease No. 21420 having Coordinates of X = 2,242,301.31 and Y = 146,000.90; thence along the boundaries of said State Lease No. 21420 the following courses: South 89 degrees 37 minutes 46 seconds West 1,376.33 feet to a point having Coordinates of X = 2,240,925.00 and Y = 145,992.00; South 00 degrees 52 minutes 17 seconds East 2,761.32 feet to a point having Coordinates of X = 2,240,967.00 and Y = 143,231.00 and South 89 degrees 52 minutes 44 seconds East 1,334.31 feet to a point having Coordinates of X = 2,242,301.31 and Y = 143,228.18; thence South 1,665.84 feet to a point having Coordinates of X = 2,242,301.31 and Y = 141,562.34; thence West 11,094.57 feet to a point having Coordinates of X = 2,231,206.73 and Y = 141,562.34; thence North 7,146.10 feet to the point of beginning, containing approximately **2,078.82 acres**, all as more particularly outlined on a plat on file in the Office of Mineral Resources, Department of Natural Resources. All bearings, distances and coordinates are based on Louisiana Coordinate System of 1927, (North or South Zone).

NOTE: The above description of the Tract nominated for lease has been provided and corrected, where required, exclusively by the nomination party. Any mineral lease selected from this Tract and awarded by the Louisiana State Mineral and Energy Board shall be without warranty of any kind, either express, implied, or statutory, including, but not limited to, the implied warranties of merchantability and fitness for a particular purpose. Should the mineral lease awarded by the Louisiana State Mineral and Energy Board be subsequently modified, cancelled or abrogated due to the existence of conflicting leases, operating agreements, private claims or other future obligations or conditions which may affect all or any portion of the leased Tract, it shall not relieve the Lessee of the obligation to pay any bonus due thereon to the Louisiana State Mineral and Energy Board, nor shall the Louisiana State Mineral and Energy Board be obligated to refund any consideration paid by the Lessor prior to such modification, cancellation, or abrogation, including, but not limited to, bonuses, rentals and royalties.

NOTE: The State of Louisiana does hereby reserve, and this lease shall be subject to, the imprescriptible right of surface use in the nature of a servitude in favor of the Department of Natural Resources, including its Offices and Commissions, for the sole purpose of implementing, constructing, servicing and maintaining approved coastal zone management and/or restoration projects. Utilization of any and all rights derived under this lease by the mineral lessee, its agents, successors or assigns, shall not interfere with nor hinder the reasonable surface use by the Department of Natural Resources, its Offices or Commissions, as herein above reserved.

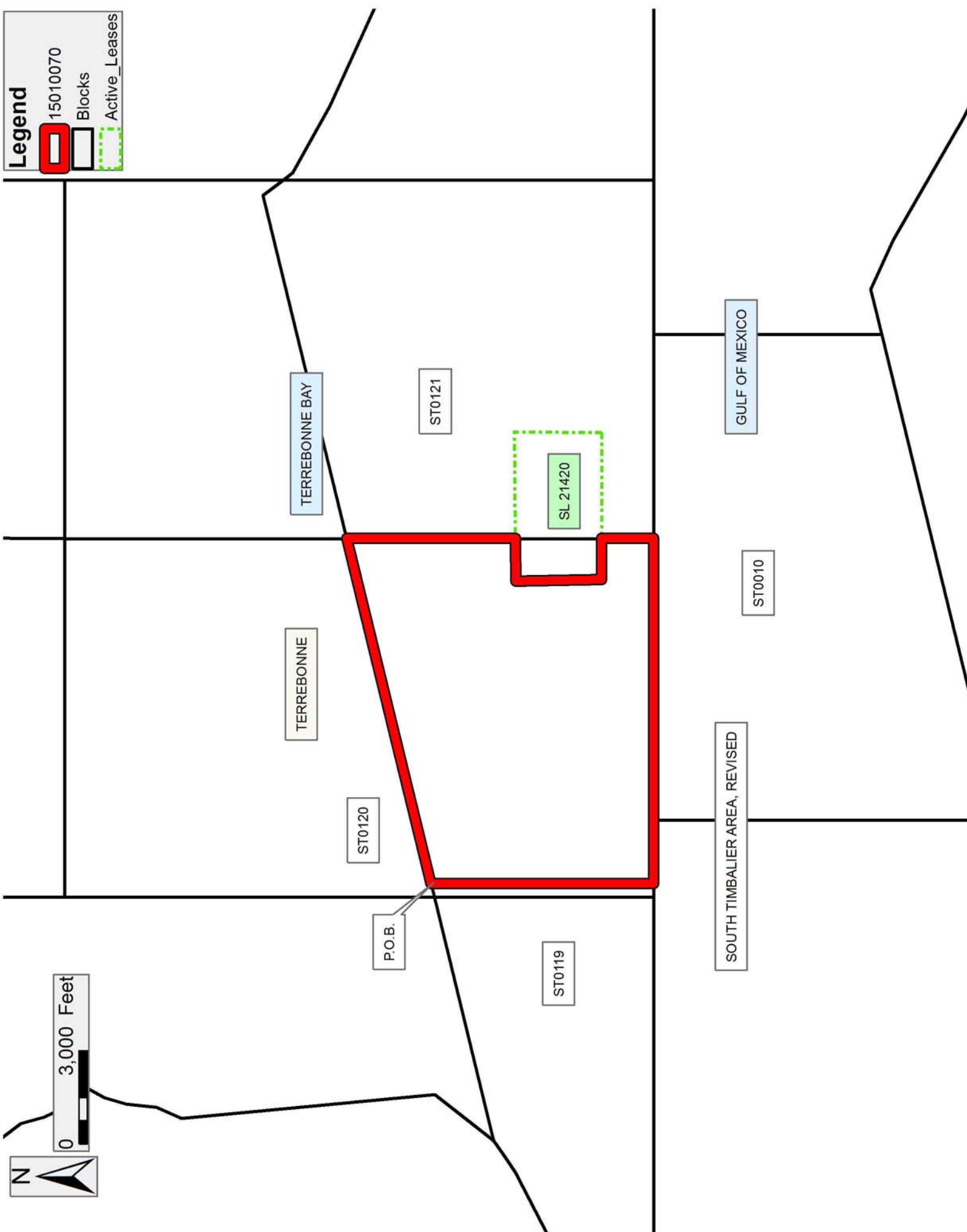
NOTE: It appears, according to our records, that a portion of this Tract is located within the restrictive safety fairway area as set out by the Corps of Engineers, U.S. Army and/or the restrictive anchorage area as set out by the U.S. Coast Guard.

Applicant: CYPRESS ENERGY CORPORATION

Bidder	Cash Payment	Price/Acre	Rental	Oil	Gas	Other

Legend

- 15010070
- Blocks
- Active_Leases



TRACT 44128 - Portion of Blocks 50, 51, and 56, West Delta Area, Plaquemines Parish, Louisiana

The beds and bottoms of all water bodies belonging to the State of Louisiana located in Blocks 50, 51, and 56, West Delta Area, together with any present lands formed by accretion to the shoreline or islands formed therein, located in Plaquemines Parish, Louisiana, owned by and not presently under mineral lease as of January 14, 2015, from the State of Louisiana, the geographical area of which is more fully described as follows: Beginning at a point having Coordinates of X = 2,605,478.00 and Y = 144,676.00, said point being the Northeast corner of Block 56, West Delta Area; thence South 2,676.00 feet on and along the East line of said Block 56, West Delta Area, to a point having Coordinates of X = 2,605,478.00 and Y = 142,000.00; thence West 6,853.05 feet to a point having Coordinates of X = 2,598,624.95 and Y = 142,000.00; thence North 2,676.00 feet to a point having Coordinates of X = 2,598,624.95 and Y = 144,676.00, said point being on the line common to Blocks 50 and 56, West Delta Area; thence North 1,371.71 feet to a point having Coordinates of X = 2,598,624.95 and Y = 146,047.71; thence East 2,947.05 feet to a point having Coordinates of X = 2,601,572.00 and Y = 146,047.71, said point being on the line common to Blocks 50 and 51, West Delta Area; thence East 3,906.00 feet to a point having Coordinates of X = 2,605,478.00 and Y = 146,047.71; thence South 1,371.71 feet to the point of beginning, containing approximately **636.80 acres**, all as more particularly outlined on a plat on file in the Office of Mineral Resources, Department of Natural Resources. All bearings, distances and coordinates are based on Louisiana Coordinate System of 1927, (North or South Zone).

NOTE: The above description of the Tract nominated for lease has been provided and corrected, where required, exclusively by the nomination party. Any mineral lease selected from this Tract and awarded by the Louisiana State Mineral and Energy Board shall be without warranty of any kind, either express, implied, or statutory, including, but not limited to, the implied warranties of merchantability and fitness for a particular purpose. Should the mineral lease awarded by the Louisiana State Mineral and Energy Board be subsequently modified, cancelled or abrogated due to the existence of conflicting leases, operating agreements, private claims or other future obligations or conditions which may affect all or any portion of the leased Tract, it shall not relieve the Lessee of the obligation to pay any bonus due thereon to the Louisiana State Mineral and Energy Board, nor shall the Louisiana State Mineral and Energy Board be obligated to refund any consideration paid by the Lessor prior to such modification, cancellation, or abrogation, including, but not limited to, bonuses, rentals and royalties.

NOTE: The State of Louisiana does hereby reserve, and this lease shall be subject to, the imprescriptible right of surface use in the nature of a servitude in favor of the Department of Natural Resources, including its Offices and Commissions, for the sole purpose of implementing, constructing, servicing and maintaining approved coastal zone management

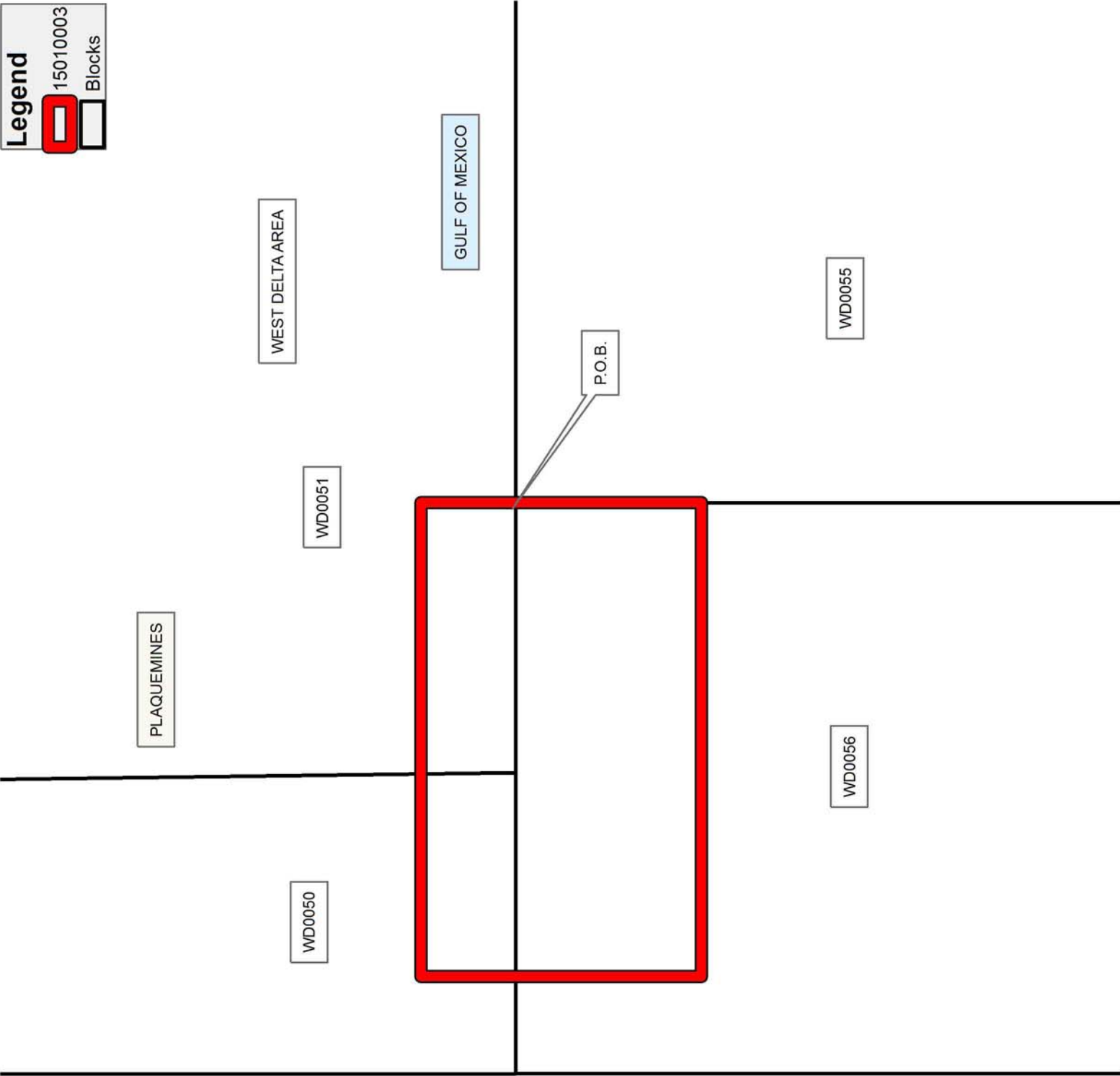
and/or restoration projects. Utilization of any and all rights derived under this lease by the mineral lessee, its agents, successors or assigns, shall not interfere with nor hinder the reasonable surface use by the Department of Natural Resources, its Offices or Commissions, as herein above reserved.

Applicant: ROBERT A. SCHROEDER, INC.

Bidder	Cash Payment	Price/Acre	Rental	Oil	Gas	Other

Legend

15010003
Blocks



0 2,000 Feet

N