

TRACT 41811 - St. Mary Parish, Louisiana

A portion of all lands located above the mean high water mark, together with lands now or formerly constituting the beds and bottoms of any water body of whatever description or nature belonging to the State of Louisiana which is now located within the boundaries of the Atchafalaya Delta Wildlife Management Area and not presently under mineral lease by the State of Louisiana on January 12, 2011, and more particularly located as follows: Beginning at a point having Coordinates of X = 1,966,762.00 and Y = 287,298.11; thence North approximately 10,748 feet to a point on the South boundary of State Lease No. 340, as amended, having a Coordinate of X = 1,966,762.00; thence Easterly approximately 10,000 feet along the South boundary of said State Lease No. 340 to a point having a Coordinate of X = 1,976,762.00; thence South approximately 10,819 feet to a point having Coordinates of X = 1,976,762.00 and Y = 287,298.11; thence West 10,000.00 feet to the point of beginning, containing approximately **2,476 acres**, all as more particularly outlined on a plat on file in the Office of Mineral Resources, Department of Natural Resources. All bearings, distances and coordinates are based on Louisiana Coordinate System of 1927, (South Zone).

NOTE: The above description of the Tract nominated for lease has been provided and corrected, where required, exclusively by the nomination party. Any mineral lease selected from this Tract and awarded by the Louisiana State Mineral and Energy Board shall be without warranty of any kind, either express, implied, or statutory, including, but not limited to, the implied warranties of merchantability and fitness for a particular purpose. Should the mineral lease awarded by the Louisiana State Mineral and Energy Board be subsequently modified, cancelled or abrogated due to the existence of conflicting leases, operating agreements, private claims or other future obligations or conditions which may affect all or any portion of the leased Tract, it shall not relieve the Lessee of the obligation to pay any bonus due thereon to the Louisiana State Mineral and Energy Board, nor shall the Louisiana State Mineral and Energy Board be obligated to refund any consideration paid by the Lessor prior to such modification, cancellation, or abrogation, including, but not limited to, bonuses, rentals and royalties.

NOTE: The mineral lease is located in the Atchafalaya Delta WMA under the jurisdiction of the Louisiana Department of Wildlife and Fisheries which has promulgated rules and regulations for the protection of game and wildlife on the aforesaid Tract and, therefore, shall be subject to said rules and regulations, a copy of which shall be attached to the mineral leases. In addition to the specific rules and regulations applicable, the following shall apply regarding operations under this mineral lease:

- No activities will be allowed without written authorization of the Louisiana Department of Wildlife and Fisheries.
- Proposed projects will be evaluated on a case by case basis. Modifications to proposed project features including but not limited to access routes, spoil placement, well sites, flowlines and

appurtenant structures may be required by the Department of Wildlife and Fisheries.

- Compliance with the Atchafalaya Delta WMA regulations will be required unless otherwise specified by the Department of Wildlife and Fisheries.
- Compensatory mitigation will be required to offset unavoidable wetland impacts.
- Removal of all structures, facilities and equipment will be required within 120 days of abandonment unless otherwise agreed to in writing by the Louisiana Department of Wildlife and Fisheries.
- No activities will be allowed during the hunting season unless approved by the Department.
- This tract is located within the emerging Atchafalaya Delta. No activities will be allowed on emergent islands or vegetated wetlands. The Louisiana Department of Wildlife and Fisheries (LDWF) shall have discretion to determine access routes. In the event that LDWF approves of dredging for access, LDWF shall have discretion to require hydraulic or spray dredging to reduce environmental impacts.
- Prior to submitting application for wetland permits to Federal and State permitting agencies the leaseholder shall coordinate project details with the Department of Wildlife and Fisheries. Contact person for the Department will be Mike Windham at (504)284-5268.

Additionally, the Department will require a minimum bonus of \$350.00 per acre and a minimum royalty of 25%.

NOTE: The State of Louisiana does hereby reserve, and this lease shall be subject to, the imprescriptible right of surface use in the nature of a servitude in favor of the Department of Natural Resources, including its Offices and Commissions, for the sole purpose of implementing, constructing, servicing and maintaining approved coastal zone management and/or restoration projects. Utilization of any and all rights derived under this lease by the mineral lessee, its agents, successors or assigns, shall not interfere with nor hinder the reasonable surface use by the Department of Natural Resources, its Offices or Commissions, as herein above reserved.

NOTE: This tract is located in an area designated by the Louisiana Legislature or the Wildlife and Fisheries Commission as a Public Oyster Seed Ground, Reservation, or area of Calcasieu or Sabine Lake. Proposed projects occurring in these areas will be evaluated on a case by case basis by Louisiana Department of Wildlife & Fisheries. Modifications to proposed project features including, but not limited to, access routes, well sites, flowlines, and appurtenant structures maybe required by the Louisiana Department of Wildlife and Fisheries. In addition, compensatory mitigation will be required to offset unavoidable habitat impacts.

Applicant: THEOPHILUS OIL, GAS & LAND SERVICES, LLC

Bidder	Cash Payment	Price/ Acre	Rental	Oil	Gas	Other

Legend

11010029

Wildlife

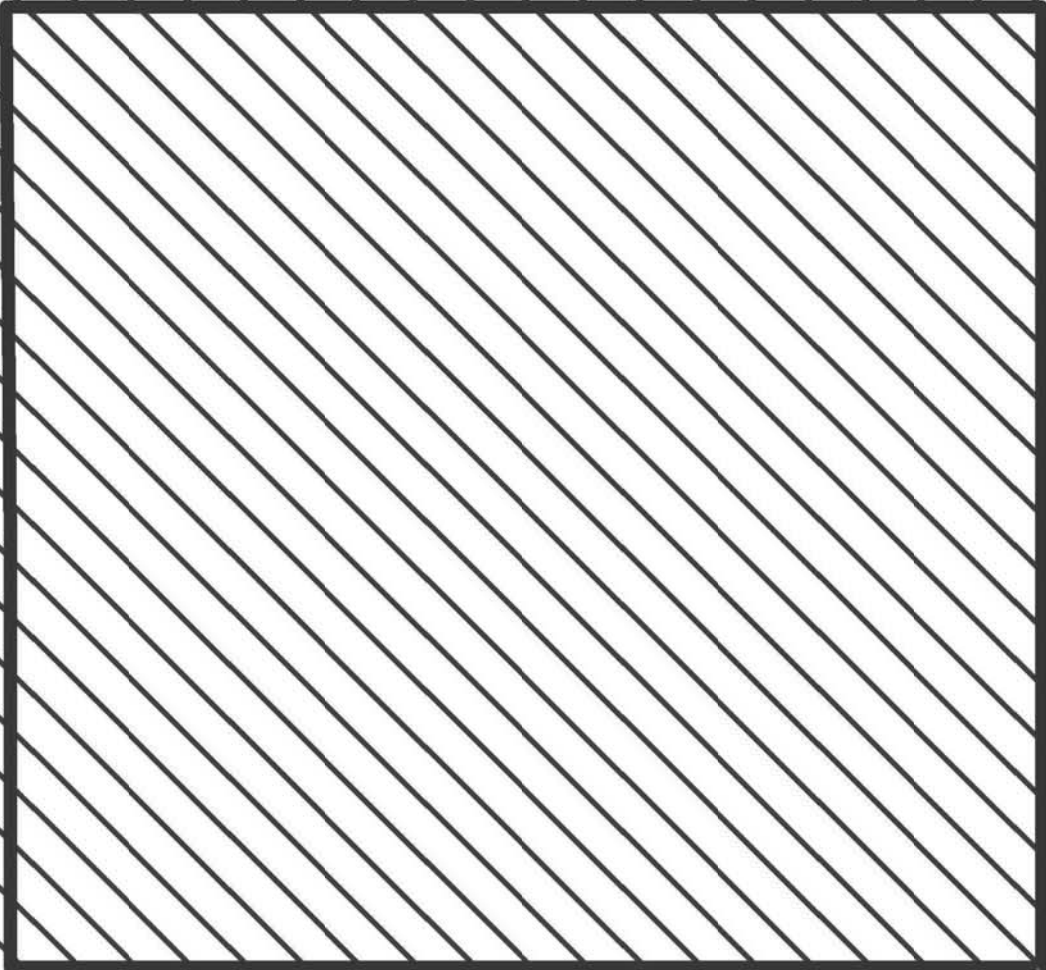
Active_Leases

Counties

ST MARY PARISH

ATCHAFALAYA DELTA WMA

SL 340



P.O.B.

ATCHAFALAYA BAY



TRACT 41812 - St. Mary Parish, Louisiana

A portion of all lands located above the mean high water mark, together with lands now or formerly constituting the beds and bottoms of any water body of whatever description or nature belonging to the State of Louisiana which is now located within the boundaries of the Atchafalaya Delta Wildlife Management Area and not presently under mineral lease by the State of Louisiana on January 12, 2011, and more particularly located as follows: Beginning at a point having Coordinates of X = 1,976,762.00 and Y = 287,298.11; thence North approximately 10,819 feet to a point on the South boundary of State Lease No. 340, as amended having a Coordinate of X = 1,976,762.00; thence Easterly approximately 10,000 feet along the South boundary of said State Lease No. 340 to a point having a Coordinate of X = 1,986,762.00; thence South approximately 10,890.00 to a point having Coordinates of X = 1,986,762.00 and Y = 287,298.11; thence West 10,000.00 feet to the point of beginning, containing approximately **2,492 acres**, all as more particularly outlined on a plat on file in the Office of Mineral Resources, Department of Natural Resources. All bearings, distances and coordinates are based on Louisiana Coordinate System of 1927, (South Zone).

NOTE: The above description of the Tract nominated for lease has been provided and corrected, where required, exclusively by the nomination party. Any mineral lease selected from this Tract and awarded by the Louisiana State Mineral and Energy Board shall be without warranty of any kind, either express, implied, or statutory, including, but not limited to, the implied warranties of merchantability and fitness for a particular purpose. Should the mineral lease awarded by the Louisiana State Mineral and Energy Board be subsequently modified, cancelled or abrogated due to the existence of conflicting leases, operating agreements, private claims or other future obligations or conditions which may affect all or any portion of the leased Tract, it shall not relieve the Lessee of the obligation to pay any bonus due thereon to the Louisiana State Mineral and Energy Board, nor shall the Louisiana State Mineral and Energy Board be obligated to refund any consideration paid by the Lessor prior to such modification, cancellation, or abrogation, including, but not limited to, bonuses, rentals and royalties.

NOTE: The mineral lease is located in the Atchafalaya Delta WMA under the jurisdiction of the Louisiana Department of Wildlife and Fisheries which has promulgated rules and regulations for the protection of game and wildlife on the aforesaid Tract and, therefore, shall be subject to said rules and regulations, a copy of which shall be attached to the mineral leases. In addition to the specific rules and regulations applicable, the following shall apply regarding operations under this mineral lease:

- No activities will be allowed without written authorization of the Louisiana Department of Wildlife and Fisheries.
- Proposed projects will be evaluated on a case by case basis. Modifications to proposed project features including but not limited

to access routes, spoil placement, well sites, flowlines and appurtenant structures may be required by the Department of Wildlife and Fisheries.

- Compliance with the Atchafalaya Delta WMA regulations will be required unless otherwise specified by the Department of Wildlife and Fisheries.
- Compensatory mitigation will be required to offset unavoidable wetland impacts.
- Removal of all structures, facilities and equipment will be required within 120 days of abandonment unless otherwise agreed to in writing by the Louisiana Department of Wildlife and Fisheries.
- No activities will be allowed during the hunting season unless approved by the Department.
- This tract is located within the emerging Atchafalaya Delta. No activities will be allowed on emergent islands or vegetated wetlands. The Louisiana Department of Wildlife and Fisheries (LDWF) shall have discretion to determine access routes. In the event that LDWF approves of dredging for access, LDWF shall have discretion to require hydraulic or spray dredging to reduce environmental impacts.
- Prior to submitting application for wetland permits to Federal and State permitting agencies the leaseholder shall coordinate project details with the Department of Wildlife and Fisheries. Contact person for the Department will be Mike Windham at (504)284-5268.

Additionally, the Department will require a minimum bonus of \$350.00 per acre and a minimum royalty of 25%.

NOTE: The State of Louisiana does hereby reserve, and this lease shall be subject to, the imprescriptible right of surface use in the nature of a servitude in favor of the Department of Natural Resources, including its Offices and Commissions, for the sole purpose of implementing, constructing, servicing and maintaining approved coastal zone management and/or restoration projects. Utilization of any and all rights derived under this lease by the mineral lessee, its agents, successors or assigns, shall not interfere with nor hinder the reasonable surface use by the Department of Natural Resources, its Offices or Commissions, as herein above reserved.

NOTE: This tract is located in an area designated by the Louisiana Legislature or the Wildlife and Fisheries Commission as a Public Oyster Seed Ground, Reservation, or area of Calcasieu or Sabine Lake. Proposed projects occurring in these areas will be evaluated on a case by case basis by Louisiana Department of Wildlife & Fisheries. Modifications to proposed project features including, but not limited to, access routes, well sites, flowlines, and appurtenant structures maybe required by the Louisiana Department of Wildlife and Fisheries. In addition, compensatory mitigation will be required to offset unavoidable habitat impacts.

Applicant: THEOPHILUS OIL, GAS & LAND SERVICES, LLC

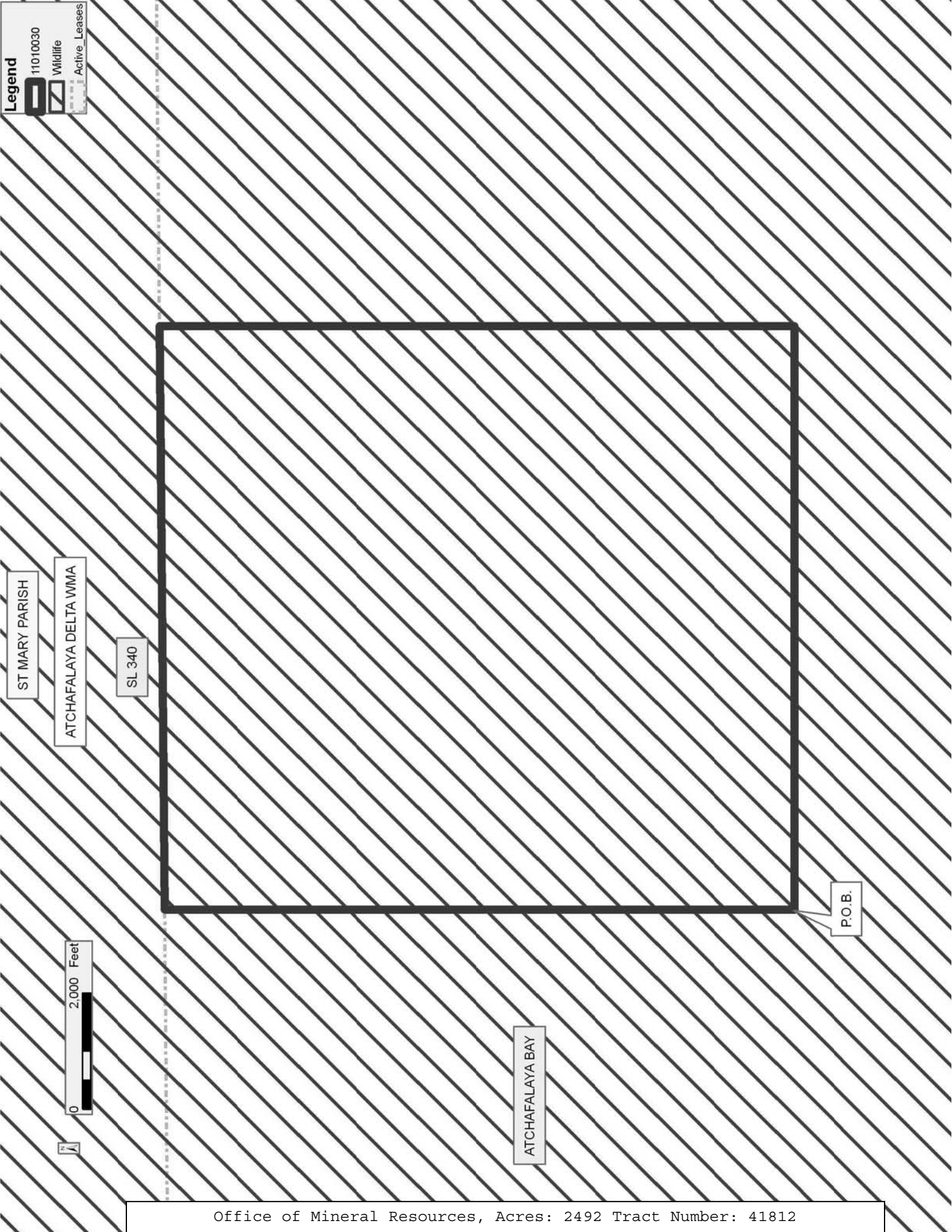
Bidder	Cash Payment	Price/ Acre	Rental	Oil	Gas	Other

Legend

11010030

Wildlife

Active Leases



TRACT 41813 - St. Mary Parish, Louisiana

A portion of all lands located above the mean high water mark, together with lands now or formerly constituting the beds and bottoms of any water body of whatever description or nature belonging to the State of Louisiana which is now located within the boundaries of the Atchafalaya Delta Wildlife Management Area and not presently under mineral lease by the State of Louisiana on January 12, 2011, and more particularly located as follows: Beginning at a point having Coordinates of X = 1,956,762.00 and Y = 297,503.25; thence Easterly approximately 8,965 feet to the Southwest corner of State Lease No. 340, as amended; thence Easterly approximately 1,051 feet along the South boundary of said State Lease No. 340 to a point having a Coordinate of X = 1,966,762.00; thence South approximately 10,748 feet to a point having Coordinates of X = 1,966,762.00 and Y = 287,298.11; thence West 10,000.00 feet to a point having Coordinates of X = 1,956,762.00 and Y = 287,298.11; thence North 10,205.14 feet to the point of beginning, containing approximately **2,411 acres**, all as more particularly outlined on a plat on file in the Office of Mineral Resources, Department of Natural Resources. All bearings, distances and coordinates are based on Louisiana Coordinate System of 1927, (South Zone).

NOTE: The above description of the Tract nominated for lease has been provided and corrected, where required, exclusively by the nomination party. Any mineral lease selected from this Tract and awarded by the Louisiana State Mineral and Energy Board shall be without warranty of any kind, either express, implied, or statutory, including, but not limited to, the implied warranties of merchantability and fitness for a particular purpose. Should the mineral lease awarded by the Louisiana State Mineral and Energy Board be subsequently modified, cancelled or abrogated due to the existence of conflicting leases, operating agreements, private claims or other future obligations or conditions which may affect all or any portion of the leased Tract, it shall not relieve the Lessee of the obligation to pay any bonus due thereon to the Louisiana State Mineral and Energy Board, nor shall the Louisiana State Mineral and Energy Board be obligated to refund any consideration paid by the Lessor prior to such modification, cancellation, or abrogation, including, but not limited to, bonuses, rentals and royalties.

NOTE: The mineral lease is located in the Atchafalaya Delta WMA under the jurisdiction of the Louisiana Department of Wildlife and Fisheries which has promulgated rules and regulations for the protection of game and wildlife on the aforesaid Tract and, therefore, shall be subject to said rules and regulations, a copy of which shall be attached to the mineral leases. In addition to the specific rules and regulations applicable, the following shall apply regarding operations under this mineral lease:

- No activities will be allowed without written authorization of the Louisiana Department of Wildlife and Fisheries.

- Proposed projects will be evaluated on a case by case basis. Modifications to proposed project features including but not limited to access routes, spoil placement, well sites, flowlines and appurtenant structures may be required by the Department of Wildlife and Fisheries.
- Compliance with the Atchafalaya Delta WMA regulations will be required unless otherwise specified by the Department of Wildlife and Fisheries.
- Compensatory mitigation will be required to offset unavoidable wetland impacts.
- Removal of all structures, facilities and equipment will be required within 120 days of abandonment unless otherwise agreed to in writing by the Louisiana Department of Wildlife and Fisheries.
- No activities will be allowed during the hunting season unless approved by the Department.
- This tract is located within the emerging Atchafalaya Delta. No activities will be allowed on emergent islands or vegetated wetlands. The Louisiana Department of Wildlife and Fisheries (LDWF) shall have discretion to determine access routes. In the event that LDWF approves of dredging for access, LDWF shall have discretion to require hydraulic or spray dredging to reduce environmental impacts.
- Prior to submitting application for wetland permits to Federal and State permitting agencies the leaseholder shall coordinate project details with the Department of Wildlife and Fisheries. Contact person for the Department will be Mike Windham at (504)284-5268.

Additionally, the Department will require a minimum bonus of \$350.00 per acre and a minimum royalty of 25%.

NOTE: The above described tract may be in the vicinity of existing shell reefs where drilling and dredging operations must be conducted in strict conformity with the regulations adopted by the Louisiana Department of Wildlife and Fisheries and/or the U.S. Corps of Engineers, U.S. Army.

NOTE: The State of Louisiana does hereby reserve, and this lease shall be subject to, the imprescriptible right of surface use in the nature of a servitude in favor of the Department of Natural Resources, including its Offices and Commissions, for the sole purpose of implementing, constructing, servicing and maintaining approved coastal zone management and/or restoration projects. Utilization of any and all rights derived under this lease by the mineral lessee, its agents, successors or assigns, shall not interfere with nor hinder the reasonable surface use by the Department of Natural Resources, its Offices or Commissions, as herein above reserved.

NOTE: This tract is located in an area designated by the Louisiana Legislature or the Wildlife and Fisheries Commission as a Public Oyster

Seed Ground, Reservation, or area of Calcasieu or Sabine Lake. Proposed projects occurring in these areas will be evaluated on a case by case basis by Louisiana Department of Wildlife & Fisheries. Modifications to proposed project features including, but not limited to, access routes, well sites, flowlines, and appurtenant structures maybe required by the Louisiana Department of Wildlife and Fisheries. In addition, compensatory mitigation will be required to offset unavoidable habitat impacts.

Applicant: THEOPHILUS OIL, GAS & LAND SERVICES, LLC

Bidder	Cash Payment	Price/ Acre	Rental	Oil	Gas	Other

Legend

11010028

Wildlife

Active Leases

SL 340

ST MARY PARISH

ATCHAFALAYA DELTA WMA

P.O.B.

ATCHAFALAYA BAY



TRACT 41814 - St. Mary Parish, Louisiana

A portion of all lands located above the mean high water mark, together with lands now or formerly constituting the beds and bottoms of any water body of whatever description or nature belonging to the State of Louisiana which is now located within the boundaries of the Atchafalaya Delta Wildlife Management Area and not presently under mineral lease by the State of Louisiana on January 12, 2011, and more particularly located as follows: Beginning at a point on the South boundary of State Lease No. 18350, as amended having Coordinates of X = 1,946,762.00 and Y = 297,503.25; thence East 4,238.00 feet along the South boundary of said State Lease No. 18350 to its Southeast corner having Coordinates of X = 1,951,000.00 and Y = 297,503.25; thence East 5,762.00 feet to a point having Coordinates of X = 1,956,762.00 and Y = 297,503.25; thence South 10,205.14 feet to a point having Coordinates of X = 1,956,762.00 and Y = 287,298.11; thence West 10,000.00 feet to a point having Coordinates of X = 1,946,762.00 and Y = 287,298.11; thence North 10,205.14 feet to the point of beginning, containing approximately **2,342.78 acres**, all as more particularly outlined on a plat on file in the Office of Mineral Resources, Department of Natural Resources. All bearings, distances and coordinates are based on Louisiana Coordinate System of 1927, (South Zone).

NOTE: The above description of the Tract nominated for lease has been provided and corrected, where required, exclusively by the nomination party. Any mineral lease selected from this Tract and awarded by the Louisiana State Mineral and Energy Board shall be without warranty of any kind, either express, implied, or statutory, including, but not limited to, the implied warranties of merchantability and fitness for a particular purpose. Should the mineral lease awarded by the Louisiana State Mineral and Energy Board be subsequently modified, cancelled or abrogated due to the existence of conflicting leases, operating agreements, private claims or other future obligations or conditions which may affect all or any portion of the leased Tract, it shall not relieve the Lessee of the obligation to pay any bonus due thereon to the Louisiana State Mineral and Energy Board, nor shall the Louisiana State Mineral and Energy Board be obligated to refund any consideration paid by the Lessor prior to such modification, cancellation, or abrogation, including, but not limited to, bonuses, rentals and royalties.

NOTE: The mineral lease is located in the Atchafalaya Delta WMA under the jurisdiction of the Louisiana Department of Wildlife and Fisheries which has promulgated rules and regulations for the protection of game and wildlife on the aforesaid Tract and, therefore, shall be subject to said rules and regulations, a copy of which shall be attached to the mineral leases. In addition to the specific rules and regulations applicable, the following shall apply regarding operations under this mineral lease:

- No activities will be allowed without written authorization of the Louisiana Department of Wildlife and Fisheries.

- Proposed projects will be evaluated on a case by case basis. Modifications to proposed project features including but not limited to access routes, spoil placement, well sites, flowlines and appurtenant structures may be required by the Department of Wildlife and Fisheries.
- Compliance with the Atchafalaya Delta WMA regulations will be required unless otherwise specified by the Department of Wildlife and Fisheries.
- Compensatory mitigation will be required to offset unavoidable wetland impacts.
- Removal of all structures, facilities and equipment will be required within 120 days of abandonment unless otherwise agreed to in writing by the Louisiana Department of Wildlife and Fisheries.
- No activities will be allowed during the hunting season unless approved by the Department.
- This tract is located within the emerging Atchafalaya Delta. No activities will be allowed on emergent islands or vegetated wetlands. The Louisiana Department of Wildlife and Fisheries (LDWF) shall have discretion to determine access routes. In the event that LDWF approves of dredging for access, LDWF shall have discretion to require hydraulic or spray dredging to reduce environmental impacts.
- Prior to submitting application for wetland permits to Federal and State permitting agencies the leaseholder shall coordinate project details with the Department of Wildlife and Fisheries. Contact person for the Department will be Mike Windham at (504)284-5268.

Additionally, the Department will require a minimum bonus of \$350.00 per acre and a minimum royalty of 25%.

NOTE: The above described tract may be in the vicinity of existing shell reefs where drilling and dredging operations must be conducted in strict conformity with the regulations adopted by the Louisiana Department of Wildlife and Fisheries and/or the U.S. Corps of Engineers, U.S. Army.

NOTE: The State of Louisiana does hereby reserve, and this lease shall be subject to, the imprescriptible right of surface use in the nature of a servitude in favor of the Department of Natural Resources, including its Offices and Commissions, for the sole purpose of implementing, constructing, servicing and maintaining approved coastal zone management and/or restoration projects. Utilization of any and all rights derived under this lease by the mineral lessee, its agents, successors or assigns, shall not interfere with nor hinder the reasonable surface use by the Department of Natural Resources, its Offices or Commissions, as herein above reserved.

NOTE: This tract is located in an area designated by the Louisiana Legislature or the Wildlife and Fisheries Commission as a Public Oyster

Seed Ground, Reservation, or area of Calcasieu or Sabine Lake. Proposed projects occurring in these areas will be evaluated on a case by case basis by Louisiana Department of Wildlife & Fisheries. Modifications to proposed project features including, but not limited to, access routes, well sites, flowlines, and appurtenant structures maybe required by the Louisiana Department of Wildlife and Fisheries. In addition, compensatory mitigation will be required to offset unavoidable habitat impacts.

Applicant: THEOPHILUS OIL, GAS & LAND SERVICES, LLC

Bidder	Cash Payment	Price/ Acre	Rental	Oil	Gas	Other

Legend

 11010027

 Wildlife

 Active Leases

ST MARY PARISH

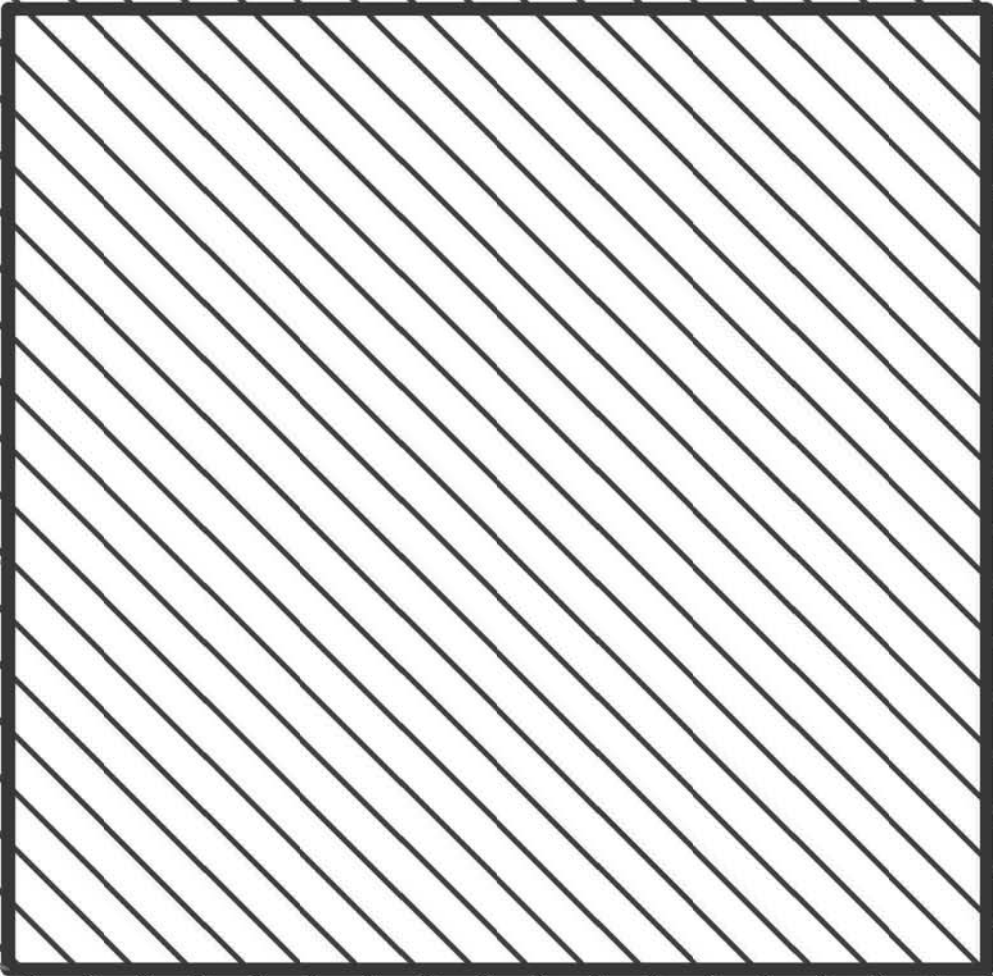
ATCHAFALAYA BAY

SL 18350

P.O.B.



ATCHAFALAYA DELTA WMA



TRACT 41815 - St. Mary Parish, Louisiana

A portion of all lands located above the mean high water mark, together with lands now or formerly constituting the beds and bottoms of any water body of whatever description or nature belonging to the State of Louisiana which is now located within the boundaries of the Atchafalaya Delta Wildlife Management Area and not presently under mineral lease by the State of Louisiana on January 12, 2011, and more particularly located as follows: Beginning at a point on the South boundary of State Lease No. 18350, as amended, having Coordinates of X = 1,946,762.00 and Y = 297,503.25; thence South 10,205.14 feet to a point having Coordinates of X = 1,946,762.00 and Y = 287,298.11; thence West 9,464.27 feet to a point on the East boundary of State Lease No. 340, as amended, having a Coordinate of X = 1,937,297.73 and Y = 287,298.11; thence North 00 degrees 08 minutes 00 seconds East 10,283.79 feet along the East boundary of said State Lease No. 340 to its Northeast corner having Coordinates of X = 1,937,321.66 and Y = 297,581.88; thence South 87 degrees 59 minutes 24 seconds East 2,241.72 feet to the Southwest corner of said State Lease No. 18350, said point also being the Northwest corner of State Lease No. 18352, as amended, and the North corner of State Lease No. 19006, as amended having Coordinates of X = 1,939,562.00 and Y = 297,503.25; thence along the West and South boundary of said State Lease No. 19006 the following courses and distances: South 24 degrees 36 minutes 48 seconds East 240.16 feet to a corner having Coordinates of X = 1,939,461.98 and Y = 297,284.91 and East 100.02 feet to the Southwest corner of said State Lease No. 18352 having Coordinates of X = 1,939,562.00 and Y = 297,284.91; thence along the South and East boundary of said State Lease No. 18352 the following courses and distances: East 363.41 feet to a corner having Coordinates of X = 1,939,925.41 and Y = 297,284.91 and North 75 degrees 48 minutes 36 seconds East 890.69 feet to its Northeast corner located on the South boundary of said State Lease No. 18350 having Coordinates of X = 1,940,788.92 and Y = 297,503.25; thence East 5,973.08 feet along the South boundary of said State Lease No. 18350 to the point of beginning, containing approximately **2,212.27 acres**, all as more particularly outlined on a plat on file in the Office of Mineral Resources, Department of Natural Resources. All bearings, distances and coordinates are based on Louisiana Coordinate System of 1927, (South Zone).

NOTE: The above description of the Tract nominated for lease has been provided and corrected, where required, exclusively by the nomination party. Any mineral lease selected from this Tract and awarded by the Louisiana State Mineral and Energy Board shall be without warranty of any kind, either express, implied, or statutory, including, but not limited to, the implied warranties of merchantability and fitness for a particular purpose. Should the mineral lease awarded by the Louisiana State Mineral and Energy Board be subsequently modified, cancelled or abrogated due to the existence of conflicting leases, operating agreements, private claims or other future obligations or conditions which may affect all or any portion of the leased Tract, it shall not relieve the Lessee of the obligation to pay any bonus due thereon to the Louisiana State Mineral and

Energy Board, nor shall the Louisiana State Mineral and Energy Board be obligated to refund any consideration paid by the Lessor prior to such modification, cancellation, or abrogation, including, but not limited to, bonuses, rentals and royalties.

NOTE: The mineral lease is located in the Atchafalaya Delta WMA under the jurisdiction of the Louisiana Department of Wildlife and Fisheries which has promulgated rules and regulations for the protection of game and wildlife on the aforesaid Tract and, therefore, shall be subject to said rules and regulations, a copy of which shall be attached to the mineral leases. In addition to the specific rules and regulations applicable, the following shall apply regarding operations under this mineral lease:

- No activities will be allowed without written authorization of the Louisiana Department of Wildlife and Fisheries.
- Proposed projects will be evaluated on a case by case basis. Modifications to proposed project features including but not limited to access routes, spoil placement, well sites, flowlines and appurtenant structures may be required by the Department of Wildlife and Fisheries.
- Compliance with the Atchafalaya Delta WMA regulations will be required unless otherwise specified by the Department of Wildlife and Fisheries.
- Compensatory mitigation will be required to offset unavoidable wetland impacts.
- Removal of all structures, facilities and equipment will be required within 120 days of abandonment unless otherwise agreed to in writing by the Louisiana Department of Wildlife and Fisheries.
- No activities will be allowed during the hunting season unless approved by the Department.
- This tract is located within the emerging Atchafalaya Delta. No activities will be allowed on emergent islands or vegetated wetlands. The Louisiana Department of Wildlife and Fisheries (LDWF) shall have discretion to determine access routes. In the event that LDWF approves of dredging for access, LDWF shall have discretion to require hydraulic or spray dredging to reduce environmental impacts.
- Prior to submitting application for wetland permits to Federal and State permitting agencies the leaseholder shall coordinate project details with the Department of Wildlife and Fisheries. Contact person for the Department will be Mike Windham at (504)284-5268.

Additionally, the Department will require a minimum bonus of \$350.00 per acre and a minimum royalty of 25%.

NOTE: The above described tract may be in the vicinity of existing shell reefs where drilling and dredging operations must be conducted in strict

conformity with the regulations adopted by the Louisiana Department of Wildlife and Fisheries and/or the U.S. Corps of Engineers, U.S. Army.

NOTE: The State of Louisiana does hereby reserve, and this lease shall be subject to, the imprescriptible right of surface use in the nature of a servitude in favor of the Department of Natural Resources, including its Offices and Commissions, for the sole purpose of implementing, constructing, servicing and maintaining approved coastal zone management and/or restoration projects. Utilization of any and all rights derived under this lease by the mineral lessee, its agents, successors or assigns, shall not interfere with nor hinder the reasonable surface use by the Department of Natural Resources, its Offices or Commissions, as herein above reserved.

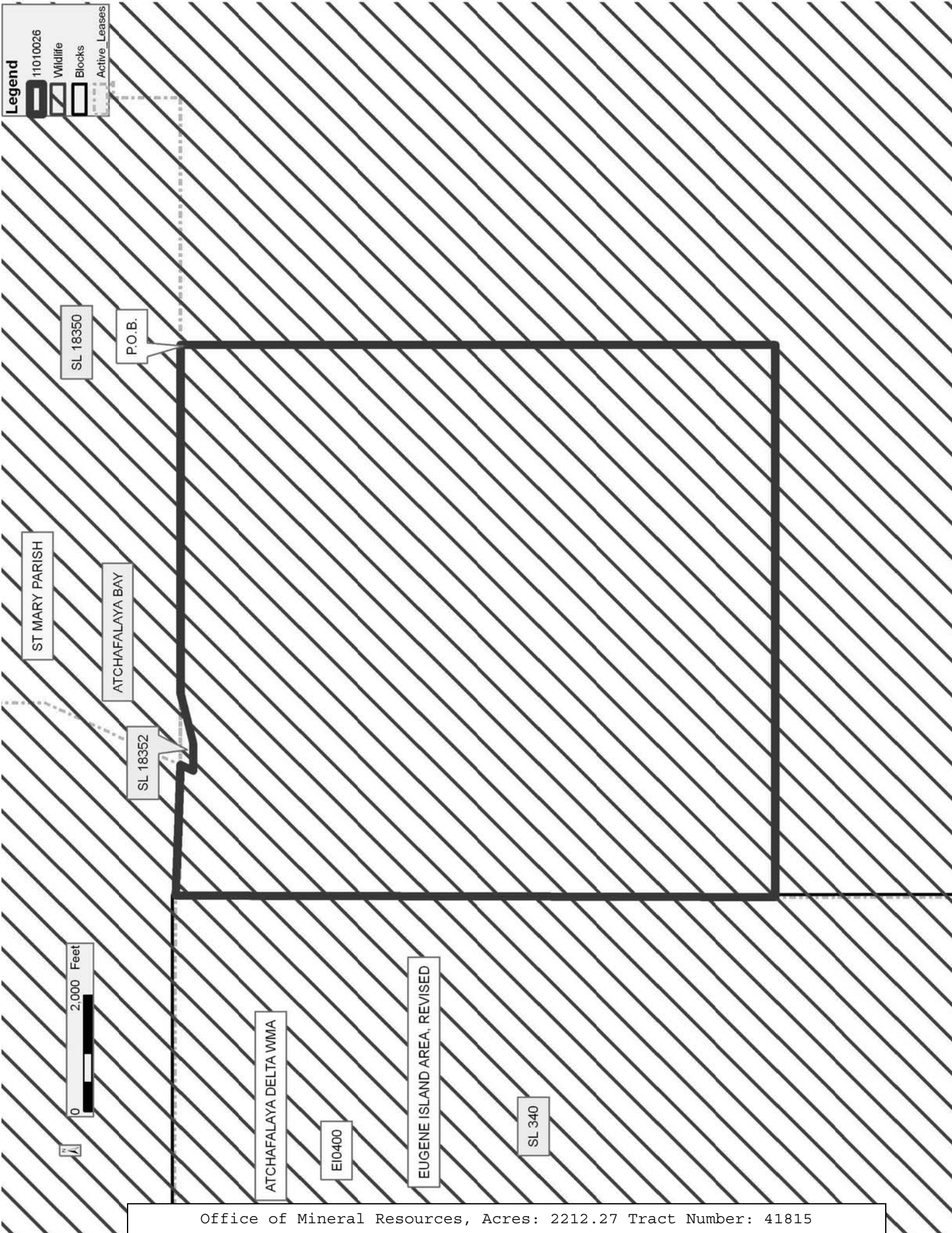
NOTE: This tract is located in an area designated by the Louisiana Legislature or the Wildlife and Fisheries Commission as a Public Oyster Seed Ground, Reservation, or area of Calcasieu or Sabine Lake. Proposed projects occurring in these areas will be evaluated on a case by case basis by Louisiana Department of Wildlife & Fisheries. Modifications to proposed project features including, but not limited to, access routes, well sites, flowlines, and appurtenant structures maybe required by the Louisiana Department of Wildlife and Fisheries. In addition, compensatory mitigation will be required to offset unavoidable habitat impacts.

Applicant: THEOPHILUS OIL, GAS & LAND SERVICES, LLC

Bidder	Cash Payment	Price/ Acre	Rental	Oil	Gas	Other

Legend

- 11010026
- Wildlife
- Blocks
- Active Leases



TRACT 41816 - St. Mary Parish, Louisiana

A portion of all lands located above the mean high water mark, together with lands now or formerly constituting the beds and bottoms of any water body of whatever description or nature belonging to the State of Louisiana which is now located within the boundaries of the Atchafalaya Delta Wildlife Management Area and not presently under mineral lease by the State of Louisiana on January 12, 2011, and more particularly located as follows: Beginning at a point having Coordinates of X = 1,976,762.00 and Y = 287,298.11; thence East 10,000.00 feet to a point having Coordinates of X = 1,986,762.00 and Y = 287,298.11; thence South 10,890.00 feet to a point having Coordinates of X = 1,986,762.00 and Y = 276,408.11; thence West 10,000.00 feet to a point having Coordinates of X = 1,976,762.00 and Y = 276,408.11; thence North 10,890.00 feet to the point of beginning, containing approximately **2,500.00 acres**, all as more particularly outlined on a plat on file in the Office of Mineral Resources, Department of Natural Resources. All bearings, distances and coordinates are based on Louisiana Coordinate System of 1927, (South Zone).

NOTE: The above description of the Tract nominated for lease has been provided and corrected, where required, exclusively by the nomination party. Any mineral lease selected from this Tract and awarded by the Louisiana State Mineral and Energy Board shall be without warranty of any kind, either express, implied, or statutory, including, but not limited to, the implied warranties of merchantability and fitness for a particular purpose. Should the mineral lease awarded by the Louisiana State Mineral and Energy Board be subsequently modified, cancelled or abrogated due to the existence of conflicting leases, operating agreements, private claims or other future obligations or conditions which may affect all or any portion of the leased Tract, it shall not relieve the Lessee of the obligation to pay any bonus due thereon to the Louisiana State Mineral and Energy Board, nor shall the Louisiana State Mineral and Energy Board be obligated to refund any consideration paid by the Lessor prior to such modification, cancellation, or abrogation, including, but not limited to, bonuses, rentals and royalties.

NOTE: The mineral lease is located in the Atchafalaya Delta WMA under the jurisdiction of the Louisiana Department of Wildlife and Fisheries which has promulgated rules and regulations for the protection of game and wildlife on the aforesaid Tract and, therefore, shall be subject to said rules and regulations, a copy of which shall be attached to the mineral leases. In addition to the specific rules and regulations applicable, the following shall apply regarding operations under this mineral lease:

- No activities will be allowed without written authorization of the Louisiana Department of Wildlife and Fisheries.
- Proposed projects will be evaluated on a case by case basis. Modifications to proposed project features including but not limited to access routes, spoil placement, well sites, flowlines and

appurtenant structures may be required by the Department of Wildlife and Fisheries.

- Compliance with the Atchafalaya Delta WMA regulations will be required unless otherwise specified by the Department of Wildlife and Fisheries.
- Compensatory mitigation will be required to offset unavoidable wetland impacts.
- Removal of all structures, facilities and equipment will be required within 120 days of abandonment unless otherwise agreed to in writing by the Louisiana Department of Wildlife and Fisheries.
- No activities will be allowed during the hunting season unless approved by the Department.
- This tract is located within the emerging Atchafalaya Delta. No activities will be allowed on emergent islands or vegetated wetlands. The Louisiana Department of Wildlife and Fisheries (LDWF) shall have discretion to determine access routes. In the event that LDWF approves of dredging for access, LDWF shall have discretion to require hydraulic or spray dredging to reduce environmental impacts.
- Prior to submitting application for wetland permits to Federal and State permitting agencies the leaseholder shall coordinate project details with the Department of Wildlife and Fisheries. Contact person for the Department will be Mike Windham at (504)284-5268.

Additionally, the Department will require a minimum bonus of \$350.00 per acre and a minimum royalty of 25%.

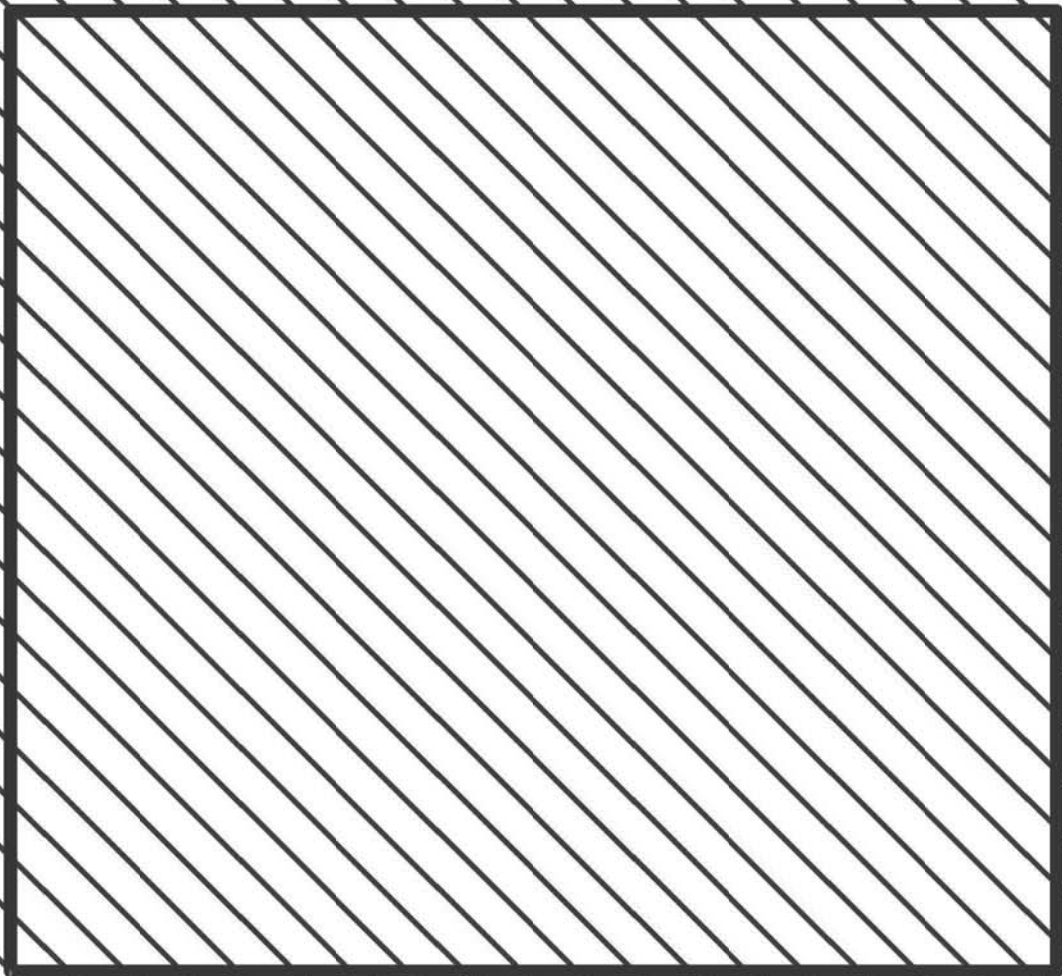
NOTE: The State of Louisiana does hereby reserve, and this lease shall be subject to, the imprescriptible right of surface use in the nature of a servitude in favor of the Department of Natural Resources, including its Offices and Commissions, for the sole purpose of implementing, constructing, servicing and maintaining approved coastal zone management and/or restoration projects. Utilization of any and all rights derived under this lease by the mineral lessee, its agents, successors or assigns, shall not interfere with nor hinder the reasonable surface use by the Department of Natural Resources, its Offices or Commissions, as herein above reserved.

NOTE: This tract is located in an area designated by the Louisiana Legislature or the Wildlife and Fisheries Commission as a Public Oyster Seed Ground, Reservation, or area of Calcasieu or Sabine Lake. Proposed projects occurring in these areas will be evaluated on a case by case basis by Louisiana Department of Wildlife & Fisheries. Modifications to proposed project features including, but not limited to, access routes, well sites, flowlines, and appurtenant structures maybe required by the Louisiana Department of Wildlife and Fisheries. In addition, compensatory mitigation will be required to offset unavoidable habitat impacts.

Applicant: THEOPHILUS OIL, GAS & LAND SERVICES, LLC

Bidder	Cash Payment	Price/ Acre	Rental	Oil	Gas	Other

ST MARY PARISH
ATCHAFALAYA DELTA WMA



P.O.B.

ATCHAFALAYA BAY



TRACT 41817 - St. Mary Parish, Louisiana

A portion of all lands located above the mean high water mark, together with lands now or formerly constituting the beds and bottoms of any water body of whatever description or nature belonging to the State of Louisiana which is now located within the boundaries of the Atchafalaya Delta Wildlife Management Area and not presently under mineral lease by the State of Louisiana on January 12, 2011, and more particularly located as follows: Beginning at a point having Coordinates of X = 1,946,762.00 and Y = 287,298.11; thence East 10,000.00 feet to a point having Coordinates of X = 1,956,762.00 and Y = 287,298.11; thence South 9,162.49 feet to a point on the Northwest boundary of State Lease No. 20367 having Coordinates of X = 1,956,762.00 and Y = 278,135.62; thence South 59 degrees 51 minutes 40 seconds West 3,440.59 feet along the Northwest boundary of said State Lease No. 20367 to a point having Coordinates of X = 1,953,786.54 and Y = 276,408.11; thence West 7,024.54 feet to a point having Coordinates of X = 1,946,762.00 and Y = 276,408.11; thence North 10,890.00 feet to the point of beginning, containing approximately **2,441.00 acres**, all as more particularly outlined on a plat on file in the Office of Mineral Resources, Department of Natural Resources. All bearings, distances and coordinates are based on Louisiana Coordinate System of 1927, (South Zone).

NOTE: The above description of the Tract nominated for lease has been provided and corrected, where required, exclusively by the nomination party. Any mineral lease selected from this Tract and awarded by the Louisiana State Mineral and Energy Board shall be without warranty of any kind, either express, implied, or statutory, including, but not limited to, the implied warranties of merchantability and fitness for a particular purpose. Should the mineral lease awarded by the Louisiana State Mineral and Energy Board be subsequently modified, cancelled or abrogated due to the existence of conflicting leases, operating agreements, private claims or other future obligations or conditions which may affect all or any portion of the leased Tract, it shall not relieve the Lessee of the obligation to pay any bonus due thereon to the Louisiana State Mineral and Energy Board, nor shall the Louisiana State Mineral and Energy Board be obligated to refund any consideration paid by the Lessor prior to such modification, cancellation, or abrogation, including, but not limited to, bonuses, rentals and royalties.

NOTE: The mineral lease is located in the Atchafalaya Delta WMA under the jurisdiction of the Louisiana Department of Wildlife and Fisheries which has promulgated rules and regulations for the protection of game and wildlife on the aforesaid Tract and, therefore, shall be subject to said rules and regulations, a copy of which shall be attached to the mineral leases. In addition to the specific rules and regulations applicable, the following shall apply regarding operations under this mineral lease:

- No activities will be allowed without written authorization of the Louisiana Department of Wildlife and Fisheries.

- Proposed projects will be evaluated on a case by case basis. Modifications to proposed project features including but not limited to access routes, spoil placement, well sites, flowlines and appurtenant structures may be required by the Department of Wildlife and Fisheries.
- Compliance with the Atchafalaya Delta WMA regulations will be required unless otherwise specified by the Department of Wildlife and Fisheries.
- Compensatory mitigation will be required to offset unavoidable wetland impacts.
- Removal of all structures, facilities and equipment will be required within 120 days of abandonment unless otherwise agreed to in writing by the Louisiana Department of Wildlife and Fisheries.
- No activities will be allowed during the hunting season unless approved by the Department.
- This tract is located within the emerging Atchafalaya Delta. No activities will be allowed on emergent islands or vegetated wetlands. The Louisiana Department of Wildlife and Fisheries (LDWF) shall have discretion to determine access routes. In the event that LDWF approves of dredging for access, LDWF shall have discretion to require hydraulic or spray dredging to reduce environmental impacts.
- Prior to submitting application for wetland permits to Federal and State permitting agencies the leaseholder shall coordinate project details with the Department of Wildlife and Fisheries. Contact person for the Department will be Mike Windham at (504)284-5268.

Additionally, the Department will require a minimum bonus of \$350.00 per acre and a minimum royalty of 25%.

NOTE: The above described tract may be in the vicinity of existing shell reefs where drilling and dredging operations must be conducted in strict conformity with the regulations adopted by the Louisiana Department of Wildlife and Fisheries and/or the U.S. Corps of Engineers, U.S. Army.

NOTE: The State of Louisiana does hereby reserve, and this lease shall be subject to, the imprescriptible right of surface use in the nature of a servitude in favor of the Department of Natural Resources, including its Offices and Commissions, for the sole purpose of implementing, constructing, servicing and maintaining approved coastal zone management and/or restoration projects. Utilization of any and all rights derived under this lease by the mineral lessee, its agents, successors or assigns, shall not interfere with nor hinder the reasonable surface use by the Department of Natural Resources, its Offices or Commissions, as herein above reserved.

NOTE: This tract is located in an area designated by the Louisiana Legislature or the Wildlife and Fisheries Commission as a Public Oyster

Seed Ground, Reservation, or area of Calcasieu or Sabine Lake. Proposed projects occurring in these areas will be evaluated on a case by case basis by Louisiana Department of Wildlife & Fisheries. Modifications to proposed project features including, but not limited to, access routes, well sites, flowlines, and appurtenant structures maybe required by the Louisiana Department of Wildlife and Fisheries. In addition, compensatory mitigation will be required to offset unavoidable habitat impacts.

Applicant: THEOPHILUS OIL, GAS & LAND SERVICES, LLC

Bidder	Cash Payment	Price/ Acre	Rental	Oil	Gas	Other

Legend

11010032

Wildlife

Active_Leases

ST MARY PARISH

0 2,000 Feet

P.O.B.

ATCHAFALAYA DELTA WMA

ATCHAFALAYA BAY

SL 20367

TRACT 41818 - St. Mary Parish, Louisiana

A portion of all lands located above the mean high water mark, together with lands now or formerly constituting the beds and bottoms of any water body of whatever description or nature belonging to the State of Louisiana which is now located within the boundaries of the Atchafalaya Delta Wildlife Management Area and not presently under mineral lease by the State of Louisiana on January 12, 2011, and more particularly located as follows: Beginning at a point having Coordinates of X = 1,956,762.00 and Y = 287,298.11; thence East 10,000.00 feet to a point having Coordinates of X = 1,966,762.00 and Y = 287,298.11; thence South 2,978.11 feet to a point on the North boundary of State Lease No. 20219 having Coordinates of X = 1,966,762.00 and Y = 284,320.00; thence along the North and West boundary of said State Lease No. 20219 the following courses and distances: West 2,762.00 feet to a corner having Coordinates of X = 1,964,000.00 and Y = 284,320.00 and South 52 degrees 56 minutes 24 seconds West 5,389.57 feet to the Northeast corner of State Lease No. 20220 having Coordinates of X = 1,959,699.10 and Y = 281,071.96; thence along the Northwest and West boundary of said State Lease No. 20220 the following courses and distances: South 52 degrees 56 minutes 24 seconds West 2,442.47 feet to a corner having Coordinates of X = 1,957,750.00 and Y = 279,600.00 and South 08 degrees 23 minutes 13 seconds West 384.68 feet to the Northwest corner of State Lease No. 20222 having Coordinates of X = 1,957,693.89 and Y = 279,219.44; thence South 08 degrees 23 minutes 13 seconds West 600.00 feet along the West boundary of said State Lease No. 20222 to the Northeast corner of State Lease No. 20367 having Coordinates of X = 1,957,606.38 and Y = 278,625.86; thence South 59 degrees 51 minutes 40 seconds West 976.37 feet along the Northwest boundary of said State Lease No. 20367 to a point having Coordinates of X = 1,956,762.00 and Y = 278,135.62; thence North 9,162.49 feet to the point of beginning, containing approximately **1,154.59 acres**, all as more particularly outlined on a plat on file in the Office of Mineral Resources, Department of Natural Resources. All bearings, distances and coordinates are based on Louisiana Coordinate System of 1927, (South Zone).

NOTE: The above description of the Tract nominated for lease has been provided and corrected, where required, exclusively by the nomination party. Any mineral lease selected from this Tract and awarded by the Louisiana State Mineral and Energy Board shall be without warranty of any kind, either express, implied, or statutory, including, but not limited to, the implied warranties of merchantability and fitness for a particular purpose. Should the mineral lease awarded by the Louisiana State Mineral and Energy Board be subsequently modified, cancelled or abrogated due to the existence of conflicting leases, operating agreements, private claims or other future obligations or conditions which may affect all or any portion of the leased Tract, it shall not relieve the Lessee of the obligation to pay any bonus due thereon to the Louisiana State Mineral and Energy Board, nor shall the Louisiana State Mineral and Energy Board be obligated to refund any consideration paid by the Lessor prior to such

modification, cancellation, or abrogation, including, but not limited to, bonuses, rentals and royalties.

NOTE: The mineral lease is located in the Atchafalaya Delta WMA under the jurisdiction of the Louisiana Department of Wildlife and Fisheries which has promulgated rules and regulations for the protection of game and wildlife on the aforesaid Tract and, therefore, shall be subject to said rules and regulations, a copy of which shall be attached to the mineral leases. In addition to the specific rules and regulations applicable, the following shall apply regarding operations under this mineral lease:

- No activities will be allowed without written authorization of the Louisiana Department of Wildlife and Fisheries.
- Proposed projects will be evaluated on a case by case basis. Modifications to proposed project features including but not limited to access routes, spoil placement, well sites, flowlines and appurtenant structures may be required by the Department of Wildlife and Fisheries.
- Compliance with the Atchafalaya Delta WMA regulations will be required unless otherwise specified by the Department of Wildlife and Fisheries.
- Compensatory mitigation will be required to offset unavoidable wetland impacts.
- Removal of all structures, facilities and equipment will be required within 120 days of abandonment unless otherwise agreed to in writing by the Louisiana Department of Wildlife and Fisheries.
- No activities will be allowed during the hunting season unless approved by the Department.
- This tract is located within the emerging Atchafalaya Delta. No activities will be allowed on emergent islands or vegetated wetlands. The Louisiana Department of Wildlife and Fisheries (LDWF) shall have discretion to determine access routes. In the event that LDWF approves of dredging for access, LDWF shall have discretion to require hydraulic or spray dredging to reduce environmental impacts.
- Prior to submitting application for wetland permits to Federal and State permitting agencies the leaseholder shall coordinate project details with the Department of Wildlife and Fisheries. Contact person for the Department will be Mike Windham at (504)284-5268.

Additionally, the Department will require a minimum bonus of \$350.00 per acre and a minimum royalty of 25%.

NOTE: The above described tract may be in the vicinity of existing shell reefs where drilling and dredging operations must be conducted in strict conformity with the regulations adopted by the Louisiana Department of Wildlife and Fisheries and/or the U.S. Corps of Engineers, U.S. Army.

NOTE: The State of Louisiana does hereby reserve, and this lease shall be subject to, the imprescriptible right of surface use in the nature of a servitude in favor of the Department of Natural Resources, including its Offices and Commissions, for the sole purpose of implementing, constructing, servicing and maintaining approved coastal zone management and/or restoration projects. Utilization of any and all rights derived under this lease by the mineral lessee, its agents, successors or assigns, shall not interfere with nor hinder the reasonable surface use by the Department of Natural Resources, its Offices or Commissions, as herein above reserved.

NOTE: This tract is located in an area designated by the Louisiana Legislature or the Wildlife and Fisheries Commission as a Public Oyster Seed Ground, Reservation, or area of Calcasieu or Sabine Lake. Proposed projects occurring in these areas will be evaluated on a case by case basis by Louisiana Department of Wildlife & Fisheries. Modifications to proposed project features including, but not limited to, access routes, well sites, flowlines, and appurtenant structures maybe required by the Louisiana Department of Wildlife and Fisheries. In addition, compensatory mitigation will be required to offset unavoidable habitat impacts.

Applicant: THEOPHILUS OIL, GAS & LAND SERVICES, LLC

Bidder	Cash Payment	Price/ Acre	Rental	Oil	Gas	Other

Legend

11010033

Wildlife

Active Leases

ST MARY PARISH

ATCHAFALAYA DELTA WMA

SL 20219

SL 20220

SL 20222

SL 20367

P.O.B.

ATCHAFALAYA BAY



TRACT 41819 - St. Mary Parish, Louisiana

A portion of all lands located above the mean high water mark, together with lands now or formerly constituting the beds and bottoms of any water body of whatever description or nature belonging to the State of Louisiana which is now located within the boundaries of the Atchafalaya Delta Wildlife Management Area and not presently under mineral lease by the State of Louisiana on January 12, 2011, and more particularly located as follows: Beginning at a point having Coordinates of X = 1,966,762.00 and Y = 287,298.11; thence East 10,000.00 feet to a point having Coordinates of X = 1,976,762.00 and Y = 287,298.11; thence South 10,890.00 feet to a point having Coordinates of X = 1,976,762.00 and Y = 276,408.11; thence West 10,000.00 feet to a point having Coordinates of X = 1,966,762.00 and Y = 276,408.11; thence North 3,930.83 feet to a point on the Southeast boundary of State Lease No. 20035 having Coordinates of X = 1,966,762.00 and Y = 280,338.94; thence North 46 degrees 02 minutes 49 seconds East 1,439.10 feet along the Southeast boundary of said State Lease No. 20035 to the Southwest corner of State Lease No. 20219 having Coordinates of X = 1,967,798.02 and Y = 281,337.78; thence along the boundary of said State Lease No. 20219 the following courses and distances: North 58 degrees 01 minutes 28 seconds East 2,477.95 feet to a corner having Coordinates of X = 1,969,900.00 and Y = 282,650.00, North 26 degrees 33 minutes 54 seconds West 1,341.64 feet to a corner having Coordinates of X = 1,969,300.00 and Y = 283,850.00, North 72 degrees 36 minutes 09 seconds West 1,571.91 feet to a corner having Coordinates of X = 1,967,800.00 and Y = 284,320.00 and West 1,038.00 feet to a point having Coordinates of X = 1,966,762.00 and Y = 284,320.00; thence North 2,978.11 feet to the point of beginning, containing approximately **2,327.78 acres**, all as more particularly outlined on a plat on file in the Office of Mineral Resources, Department of Natural Resources. All bearings, distances and coordinates are based on Louisiana Coordinate System of 1927, (South Zone).

NOTE: The above description of the Tract nominated for lease has been provided and corrected, where required, exclusively by the nomination party. Any mineral lease selected from this Tract and awarded by the Louisiana State Mineral and Energy Board shall be without warranty of any kind, either express, implied, or statutory, including, but not limited to, the implied warranties of merchantability and fitness for a particular purpose. Should the mineral lease awarded by the Louisiana State Mineral and Energy Board be subsequently modified, cancelled or abrogated due to the existence of conflicting leases, operating agreements, private claims or other future obligations or conditions which may affect all or any portion of the leased Tract, it shall not relieve the Lessee of the obligation to pay any bonus due thereon to the Louisiana State Mineral and Energy Board, nor shall the Louisiana State Mineral and Energy Board be obligated to refund any consideration paid by the Lessor prior to such modification, cancellation, or abrogation, including, but not limited to, bonuses, rentals and royalties.

NOTE: The mineral lease is located in the Atchafalaya Delta WMA under the jurisdiction of the Louisiana Department of Wildlife and Fisheries which has promulgated rules and regulations for the protection of game and wildlife on the aforesaid Tract and, therefore, shall be subject to said rules and regulations, a copy of which shall be attached to the mineral leases. In addition to the specific rules and regulations applicable, the following shall apply regarding operations under this mineral lease:

- No activities will be allowed without written authorization of the Louisiana Department of Wildlife and Fisheries.
- Proposed projects will be evaluated on a case by case basis. Modifications to proposed project features including but not limited to access routes, spoil placement, well sites, flowlines and appurtenant structures may be required by the Department of Wildlife and Fisheries.
- Compliance with the Atchafalaya Delta WMA regulations will be required unless otherwise specified by the Department of Wildlife and Fisheries.
- Compensatory mitigation will be required to offset unavoidable wetland impacts.
- Removal of all structures, facilities and equipment will be required within 120 days of abandonment unless otherwise agreed to in writing by the Louisiana Department of Wildlife and Fisheries.
- No activities will be allowed during the hunting season unless approved by the Department.
- This tract is located within the emerging Atchafalaya Delta. No activities will be allowed on emergent islands or vegetated wetlands. The Louisiana Department of Wildlife and Fisheries (LDWF) shall have discretion to determine access routes. In the event that LDWF approves of dredging for access, LDWF shall have discretion to require hydraulic or spray dredging to reduce environmental impacts.
- Prior to submitting application for wetland permits to Federal and State permitting agencies the leaseholder shall coordinate project details with the Department of Wildlife and Fisheries. Contact person for the Department will be Mike Windham at (504)284-5268.

Additionally, the Department will require a minimum bonus of \$350.00 per acre and a minimum royalty of 25%.

NOTE: The above described tract may be in the vicinity of existing shell reefs where drilling and dredging operations must be conducted in strict conformity with the regulations adopted by the Louisiana Department of Wildlife and Fisheries and/or the U.S. Corps of Engineers, U.S. Army.

NOTE: The State of Louisiana does hereby reserve, and this lease shall be subject to, the imprescriptible right of surface use in the nature of a servitude in favor of the Department of Natural Resources, including its

Offices and Commissions, for the sole purpose of implementing, constructing, servicing and maintaining approved coastal zone management and/or restoration projects. Utilization of any and all rights derived under this lease by the mineral lessee, its agents, successors or assigns, shall not interfere with nor hinder the reasonable surface use by the Department of Natural Resources, its Offices or Commissions, as herein above reserved.

NOTE: This tract is located in an area designated by the Louisiana Legislature or the Wildlife and Fisheries Commission as a Public Oyster Seed Ground, Reservation, or area of Calcasieu or Sabine Lake. Proposed projects occurring in these areas will be evaluated on a case by case basis by Louisiana Department of Wildlife & Fisheries. Modifications to proposed project features including, but not limited to, access routes, well sites, flowlines, and appurtenant structures maybe required by the Louisiana Department of Wildlife and Fisheries. In addition, compensatory mitigation will be required to offset unavoidable habitat impacts.

Applicant: THEOPHILUS OIL, GAS & LAND SERVICES, LLC

Bidder	Cash Payment	Price/ Acre	Rental	Oil	Gas	Other

Legend

11010034

Wildlife

Active Leases

ST MARY PARISH

ATCHAFALAYA DELTA WMA

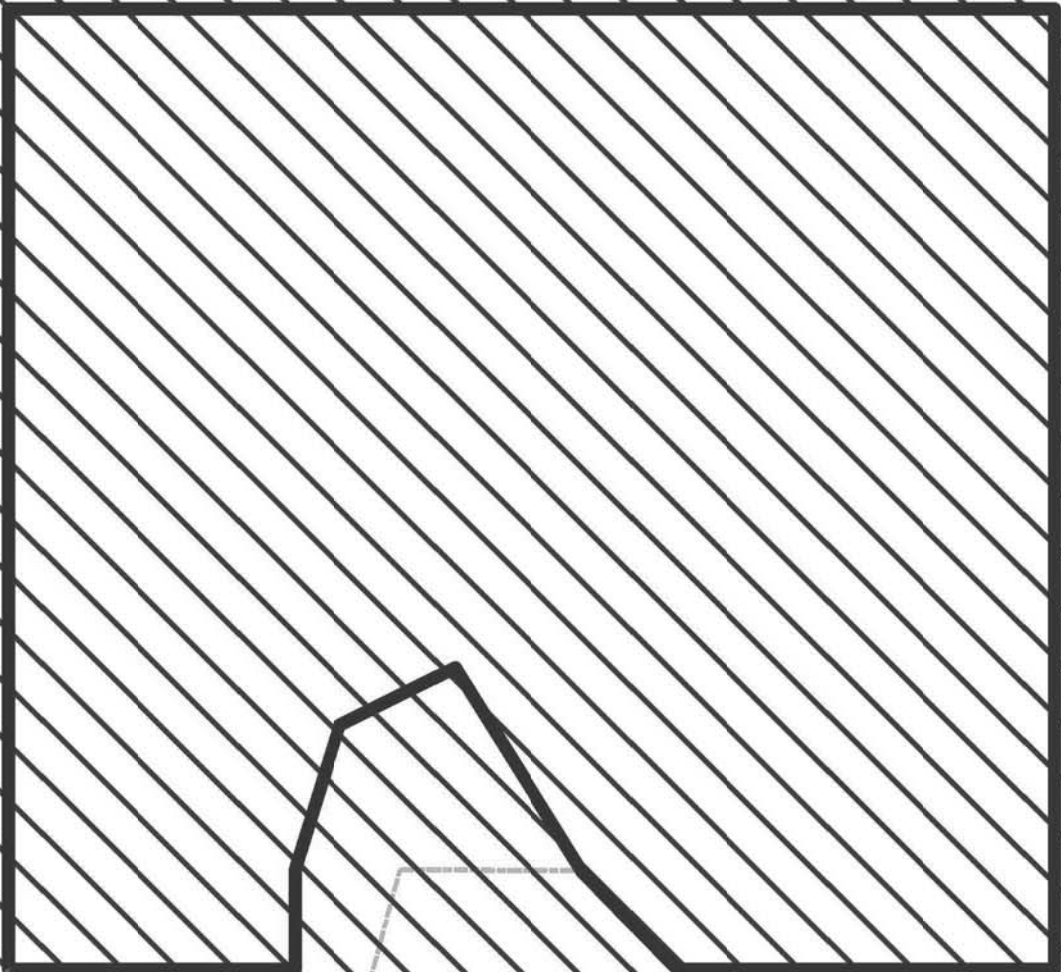
0 2,000 Feet

P.O.B.

ATCHAFALAYA BAY

SL 20219

SL 20035



TRACT 41820 - St. Mary Parish, Louisiana

A portion of all lands located above the mean high water mark, together with lands now or formerly constituting the beds and bottoms of any water body of whatever description or nature belonging to the State of Louisiana which is now located within the boundaries of the Atchafalaya Delta Wildlife Management Area and not presently under mineral lease by the State of Louisiana on January 12, 2011, and more particularly located as follows: Beginning at a point having Coordinates of X = 1,946,762.00 and Y = 287,298.11; thence South 10,890.00 feet to a point having Coordinates of X = 1,946,762.00 and Y = 276,408.11; thence West 9,489.62 feet to a point on the East boundary of State Lease No. 340, as amended, having Coordinates of X = 1,937,272.38 and Y = 276,408.11; thence North 00 degrees 08 minutes 00 seconds East 10,890.03 feet along the East boundary of said State Lease No. 340 to a point having a Coordinate of X = 1,937,297.73 and Y = 287,298.11; thence East 9,464.27 feet to the point of beginning, containing approximately **2,369.24 acres**, all as more particularly outlined on a plat on file in the Office of Mineral Resources, Department of Natural Resources. All bearings, distances and coordinates are based on Louisiana Coordinate System of 1927, (South Zone).

NOTE: The above description of the Tract nominated for lease has been provided and corrected, where required, exclusively by the nomination party. Any mineral lease selected from this Tract and awarded by the Louisiana State Mineral and Energy Board shall be without warranty of any kind, either express, implied, or statutory, including, but not limited to, the implied warranties of merchantability and fitness for a particular purpose. Should the mineral lease awarded by the Louisiana State Mineral and Energy Board be subsequently modified, cancelled or abrogated due to the existence of conflicting leases, operating agreements, private claims or other future obligations or conditions which may affect all or any portion of the leased Tract, it shall not relieve the Lessee of the obligation to pay any bonus due thereon to the Louisiana State Mineral and Energy Board, nor shall the Louisiana State Mineral and Energy Board be obligated to refund any consideration paid by the Lessor prior to such modification, cancellation, or abrogation, including, but not limited to, bonuses, rentals and royalties.

NOTE: The mineral lease is located in the Atchafalaya Delta WMA under the jurisdiction of the Louisiana Department of Wildlife and Fisheries which has promulgated rules and regulations for the protection of game and wildlife on the aforesaid Tract and, therefore, shall be subject to said rules and regulations, a copy of which shall be attached to the mineral leases. In addition to the specific rules and regulations applicable, the following shall apply regarding operations under this mineral lease:

- No activities will be allowed without written authorization of the Louisiana Department of Wildlife and Fisheries.

- Proposed projects will be evaluated on a case by case basis. Modifications to proposed project features including but not limited to access routes, spoil placement, well sites, flowlines and appurtenant structures may be required by the Department of Wildlife and Fisheries.
- Compliance with the Atchafalaya Delta WMA regulations will be required unless otherwise specified by the Department of Wildlife and Fisheries.
- Compensatory mitigation will be required to offset unavoidable wetland impacts.
- Removal of all structures, facilities and equipment will be required within 120 days of abandonment unless otherwise agreed to in writing by the Louisiana Department of Wildlife and Fisheries.
- No activities will be allowed during the hunting season unless approved by the Department.
- This tract is located within the emerging Atchafalaya Delta. No activities will be allowed on emergent islands or vegetated wetlands. The Louisiana Department of Wildlife and Fisheries (LDWF) shall have discretion to determine access routes. In the event that LDWF approves of dredging for access, LDWF shall have discretion to require hydraulic or spray dredging to reduce environmental impacts.
- Prior to submitting application for wetland permits to Federal and State permitting agencies the leaseholder shall coordinate project details with the Department of Wildlife and Fisheries. Contact person for the Department will be Mike Windham at (504)284-5268.

Additionally, the Department will require a minimum bonus of \$350.00 per acre and a minimum royalty of 25%.

NOTE: The above described tract may be in the vicinity of existing shell reefs where drilling and dredging operations must be conducted in strict conformity with the regulations adopted by the Louisiana Department of Wildlife and Fisheries and/or the U.S. Corps of Engineers, U.S. Army.

NOTE: The State of Louisiana does hereby reserve, and this lease shall be subject to, the imprescriptible right of surface use in the nature of a servitude in favor of the Department of Natural Resources, including its Offices and Commissions, for the sole purpose of implementing, constructing, servicing and maintaining approved coastal zone management and/or restoration projects. Utilization of any and all rights derived under this lease by the mineral lessee, its agents, successors or assigns, shall not interfere with nor hinder the reasonable surface use by the Department of Natural Resources, its Offices or Commissions, as herein above reserved.

NOTE: This tract is located in an area designated by the Louisiana Legislature or the Wildlife and Fisheries Commission as a Public Oyster

Seed Ground, Reservation, or area of Calcasieu or Sabine Lake. Proposed projects occurring in these areas will be evaluated on a case by case basis by Louisiana Department of Wildlife & Fisheries. Modifications to proposed project features including, but not limited to, access routes, well sites, flowlines, and appurtenant structures maybe required by the Louisiana Department of Wildlife and Fisheries. In addition, compensatory mitigation will be required to offset unavoidable habitat impacts.

Applicant: THEOPHILUS OIL, GAS & LAND SERVICES, LLC

Bidder	Cash Payment	Price/ Acre	Rental	Oil	Gas	Other

Legend

- 11010031
- Wildlife
- Blocks
- Active Leases

