

TRACT 40777 - Portion of Block 48, Breton Sound Area, Plaquemines Parish, Louisiana

All of the lands now or formerly constituting the beds and bottoms of all water bodies of every nature and description as to which title is vested in the State of Louisiana, together with all islands arising therein and other lands formed by accretion or by reliction, where allowed by law, excepting tax adjudicated lands, and not presently under mineral lease on January 14, 2009, situated in Plaquemines Parish, Louisiana, and more particularly described as follows: Beginning at a point having Coordinates of X = 2,635,350.00 and Y = 292,830.00, said point being the Southwest corner of Block 48, Breton Sound Area; thence North 238.00 feet on and along the West line of said Block 48, Breton Sound Area, to a point having Coordinates of X = 2,635,350.00 and Y = 293,068.00; thence continue North 3,851.76 feet on and along said West line of said Block 48, Breton Sound Area, to a point having Coordinates of X = 2,635,350.00 and Y = 296,919.76; thence continue North 3,285.24 feet on and along said West line of said Block 48, Breton Sound Area, to a point having Coordinates of X = 2,635,350.00 and Y = 300,205.00; thence East 14,750.00 feet to a point having Coordinates of X = 2,650,100.00 and Y = 300,205.00, said point being on the East line of said Block 48, Breton Sound Area; thence South 7,375.00 feet on and along said East line of said Block 48, Breton Sound Area, to a point having Coordinates of X = 2,650,100.00 and Y = 292,830.00, said point being the Southeast corner of said Block 48, Breton Sound Area; thence West 14,750.00 feet on and along the South line of said Block 48, Breton Sound Area, to the point of beginning, containing **2,497.27 acres**, all as more particularly outlined on a plat on file in the Office of Mineral Resources, Department of Natural Resources. All bearings, distances and coordinates are based on Louisiana Coordinate System of 1927, (North or South Zone), where applicable.

NOTE: The above description of the Tract nominated for lease has been provided and corrected, where required, exclusively by the nomination party. Any mineral lease selected from this Tract and awarded by the Louisiana State Mineral Board shall be without warranty of any kind, either express, implied, or statutory, including, but not limited to, the implied warranties of merchantability and fitness for a particular purpose. Should the mineral lease awarded by the Louisiana State Mineral Board be subsequently modified, cancelled or abrogated due to the existence of conflicting leases, operating agreements, private claims or other future obligations or conditions which may affect all or any portion of the leased Tract, it shall not relieve the Lessee of the obligation to pay any bonus due thereon to the Louisiana State Mineral Board, nor shall the Louisiana State Mineral Board be obligated to refund any consideration paid by the Lessor prior to such modification, cancellation, or abrogation, including, but not limited to, bonuses, rentals and royalties.

NOTE: The State of Louisiana does hereby reserve, and this lease shall be subject to, the imprescriptible right of surface use in the nature of a servitude in favor of the Department of Natural Resources, including its Offices and Commissions, for the sole purpose of implementing,




constructing, servicing and maintaining approved coastal zone management and/or restoration projects. Utilization of any and all rights derived under this lease by the mineral lessee, its agents, successors or assigns, shall not interfere with nor hinder the reasonable surface use by the Department of Natural Resources, its Offices or Commissions, as herein above reserved.

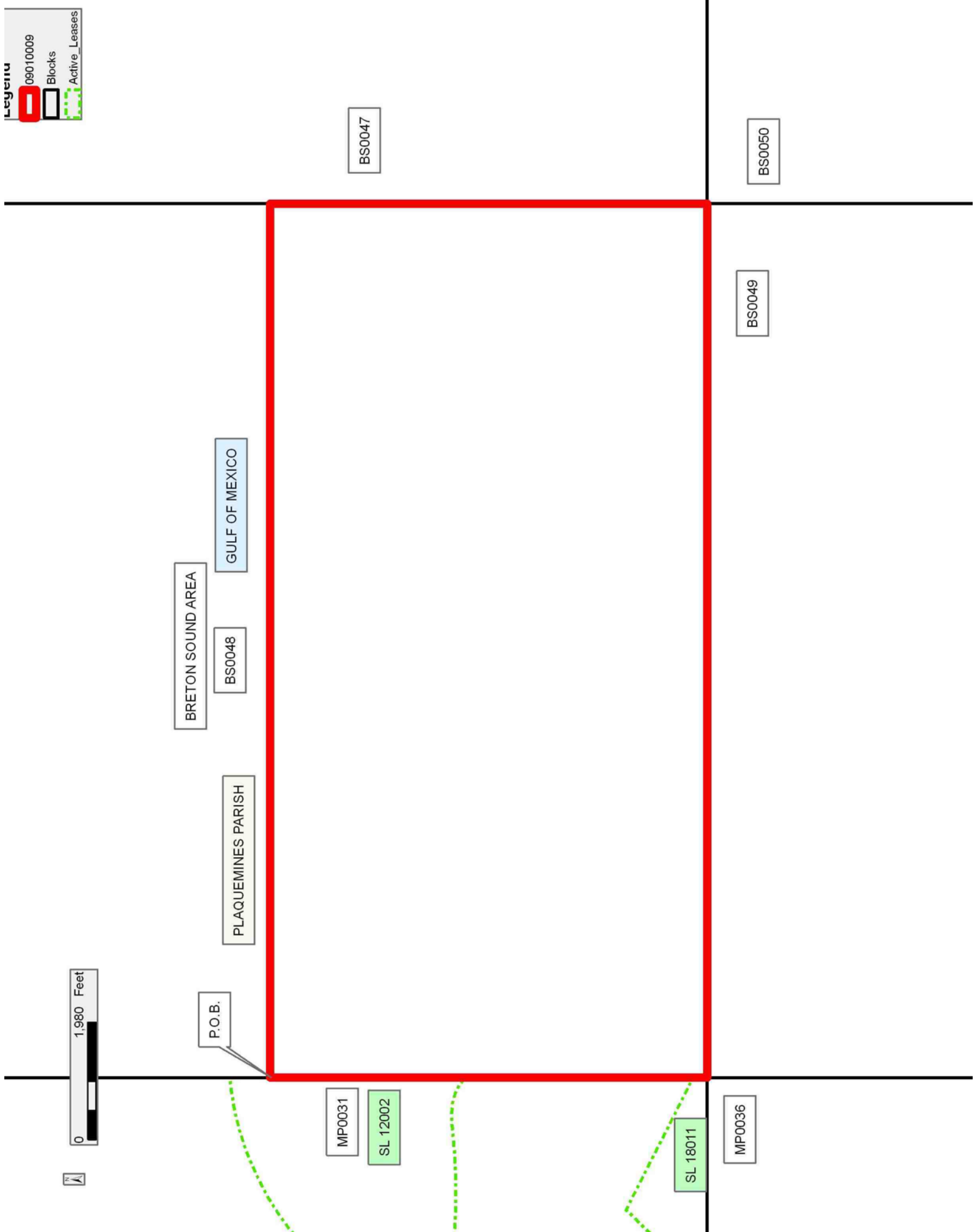
NOTE: The Department of Wildlife and Fisheries has designated certain areas in the coastal waters of the State of Louisiana as Oyster Seed Bed Areas. The exact location of those Seed Bed Areas must be obtained from the Department of Wildlife and Fisheries and any work done under a mineral lease from the State of Louisiana may necessarily be conducted in conformity with the rules and regulations promulgated by the said Department of Wildlife and Fisheries for Oyster Seed Bed Areas.

Applicant: ROBERT A. SCHROEDER, INC.

Bidder	Cash Payment	Price/Acre	Rental	Oil	Gas	Other

Legend

-  09010009
-  Blocks
-  Active_Leases



TRACT 40778 - Portion of Block 47, Breton Sound Area, Plaquemines Parish, Louisiana

All of the lands now or formerly constituting the beds and bottoms of all water bodies of every nature and description as to which title is vested in the State of Louisiana, together with all islands arising therein and other lands formed by accretion or by reliction, where allowed by law, excepting tax adjudicated lands, and not presently under mineral lease on January 14, 2009, situated in Plaquemines Parish, Louisiana, and more particularly described as follows: Beginning at a point having Coordinates of X = 2,650,100.00 and Y = 292,830.00, said point being the southwest corner of Block 47, Breton Sound Area; thence North 7,375.00 feet on and along the west line of said Block 47, Breton Sound Area, to a point having Coordinates of X = 2,650,100.00 and Y = 300,205.00; thence East 8,664.74 feet to a point having Coordinates of X = 2,658,764.74 and Y = 300,205.00, said point being on a northern boundary of State of Louisiana State Lease No. 16569, as amended (western segment); thence on and along the northern, western, southern and eastern boundaries of said State of Louisiana State Lease No. 16569, as amended (western segment), the following courses and distances, to wit: South 56 degrees 27 minutes 32 seconds West 1,547.40 feet to a point having Coordinates of X = 2,657,475.00 and Y = 299,350.01; South 1,270.01 feet to a point having Coordinates of X = 2,657,475.00 and Y = 298,080.00; South 63 degrees 19 minutes 34 seconds East 1,204.00 feet to a point having Coordinates of X = 2,658,550.87 and Y = 297,539.51; North 59 degrees 36 minutes 34 seconds East 3,532.92 feet to a point having Coordinates of X = 2,661,598.36 and Y = 299,326.78; North 800.00 feet to a point having Coordinates of X = 2,661,598.36 and Y = 300,126.78; and North 75 degrees 24 minutes 12 seconds West 310.38 feet to a point having Coordinates of X = 2,661,298.00 and Y = 300,205.00; thence East 1,192.00 feet to a point having Coordinates of X = 2,662,490.00 and Y = 300,205.00, said point being the southwest corner of State of Louisiana State Lease No. 19168; thence East 2,360.00 feet on and along the south line of said State of Louisiana State Lease No. 19168 to a point having Coordinates of X = 2,664,850.00 and Y = 300,205.00, said point being the southeast corner of said State of Louisiana State Lease No. 19168, said point being on the east line of said Block 47, Breton Sound Area; thence South 925.00 feet on and along said east line of said Block 47, Breton Sound Area, to a point having Coordinates of X = 2,664,850.00 and Y = 299,280.00, said point being the northeast corner of State of Louisiana State Lease No. 16569, as amended (eastern segment); thence on and along the northern, western, southern and eastern boundaries of said State of Louisiana State Lease No. 16569, as amended (eastern segment), the following courses and distances, to wit: North 75 degrees 24 minutes 12 seconds West 1,560.09 feet to a point having Coordinates of X = 2,663,340.26 and Y = 299,673.16; South 50 degrees 54 minutes 23 seconds West 4,448.55 feet to a point having Coordinates of X = 2,659,887.66 and Y = 296,867.95; South 63 degrees 19 minutes 35 seconds East 3,203.23 feet to a point having Coordinates of X = 2,662,750.00 and Y = 295,430.00; East 1,040.01 feet to a point having Coordinates of X = 2,663,790.01 and Y = 295,430.00; and North 23 degrees 40 minutes 37 seconds East 2,639.56 feet

to a point having Coordinates of X = 2,664,850.00 and Y = 297,847.38, said point being on said east line of said Block 47, Breton Sound Area; thence South 5,017.38 feet on and along said east line of said Block 47, Breton Sound Area, to a point having Coordinates of X = 2,664,850.00 and Y = 292,830.00, said point being the southeast corner of said Block 47, Breton Sound Area; thence West 14,750.00 feet on and along the south line of said Block 47, Breton Sound Area, to the point of beginning, containing **2,038.34 acres**, all as more particularly outlined on a plat on file in the Office of Mineral Resources, Department of Natural Resources. All bearings, distances and coordinates are based on Louisiana Coordinate System of 1927, (North or South Zone), where applicable.

NOTE: The above description of the Tract nominated for lease has been provided and corrected, where required, exclusively by the nomination party. Any mineral lease selected from this Tract and awarded by the Louisiana State Mineral Board shall be without warranty of any kind, either express, implied, or statutory, including, but not limited to, the implied warranties of merchantability and fitness for a particular purpose. Should the mineral lease awarded by the Louisiana State Mineral Board be subsequently modified, cancelled or abrogated due to the existence of conflicting leases, operating agreements, private claims or other future obligations or conditions which may affect all or any portion of the leased Tract, it shall not relieve the Lessee of the obligation to pay any bonus due thereon to the Louisiana State Mineral Board, nor shall the Louisiana State Mineral Board be obligated to refund any consideration paid by the Lessor prior to such modification, cancellation, or abrogation, including, but not limited to, bonuses, rentals and royalties.

NOTE: The State of Louisiana does hereby reserve, and this lease shall be subject to, the imprescriptible right of surface use in the nature of a servitude in favor of the Department of Natural Resources, including its Offices and Commissions, for the sole purpose of implementing, constructing, servicing and maintaining approved coastal zone management and/or restoration projects. Utilization of any and all rights derived under this lease by the mineral lessee, its agents, successors or assigns, shall not interfere with nor hinder the reasonable surface use by the Department of Natural Resources, its Offices or Commissions, as herein above reserved.

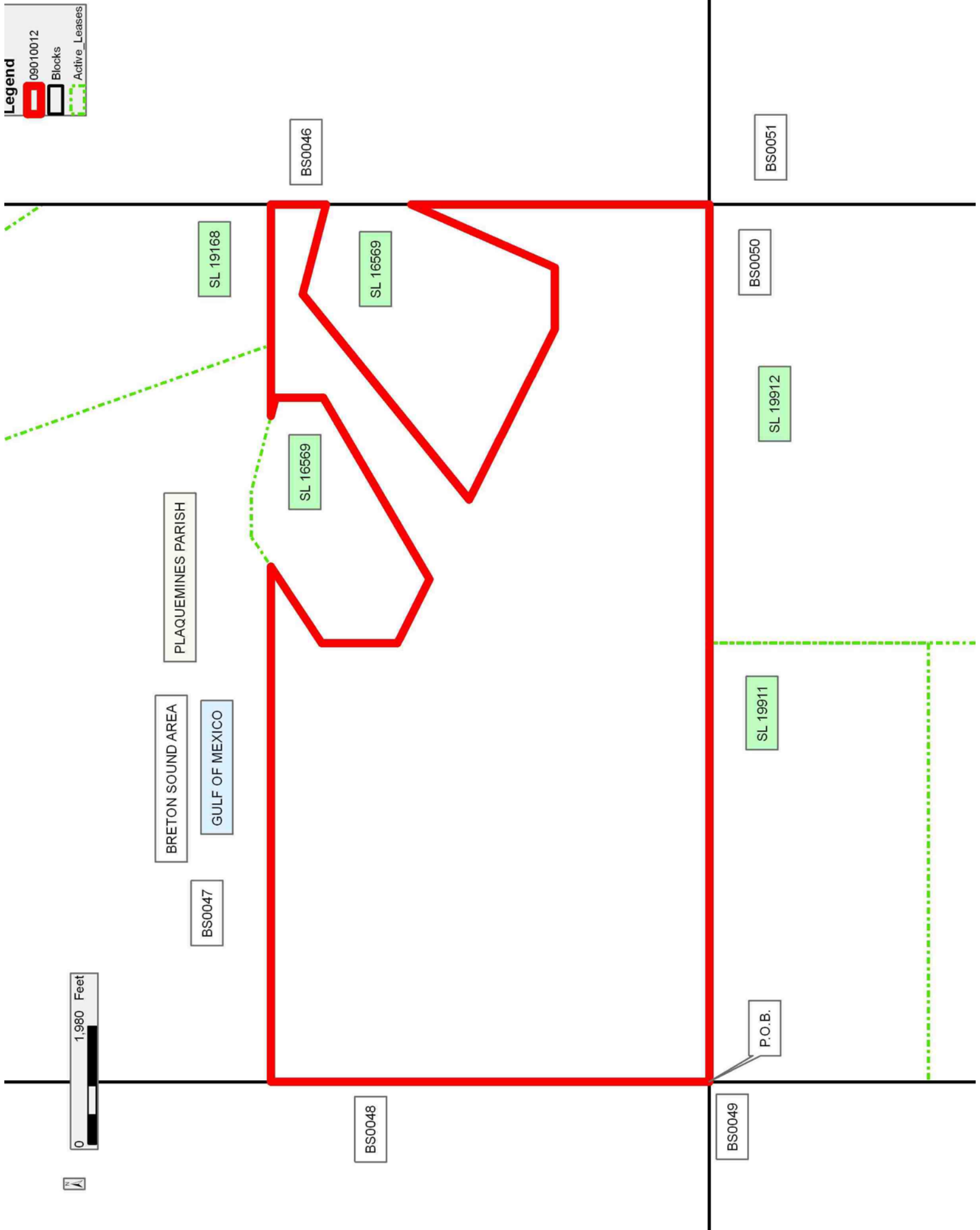
NOTE: The Department of Wildlife and Fisheries has designated certain areas in the coastal waters of the State of Louisiana as Oyster Seed Bed Areas. The exact location of those Seed Bed Areas must be obtained from the Department of Wildlife and Fisheries and any work done under a mineral lease from the State of Louisiana may necessarily be conducted in conformity with the rules and regulations promulgated by the said Department of Wildlife and Fisheries for Oyster Seed Bed Areas.

Applicant: ROBERT A. SCHROEDER, INC.

Bidder	Cash Payment	Price/Acre	Rental	Oil	Gas	Other

Legend

- 09010012
- Blocks
- Active_Leases



TRACT 40779 - Portion of Block 36, Main Pass Area, Revised, Plaquemines Parish, Louisiana

All of the lands now or formerly constituting the beds and bottoms of all water bodies of every nature and description as to which title is vested in the State of Louisiana, together with all islands arising therein and other lands formed by accretion or by reliction, where allowed by law, excepting tax adjudicated lands, and not presently under mineral lease on January 14, 2009, situated in Plaquemines Parish, Louisiana, and more particularly described as follows:

Beginning at the Northeast corner of Block 36, Main Pass Area, Revised, having Coordinates of X = 2,635,350.00 and Y = 292,830.00; thence South 7,375.00 feet on and along the East line of said Block 36, Main Pass Area, Revised, to a point having Coordinates of X = 2,635,350.00 and Y = 285,455.00; thence West 14,750.00 feet to a point having Coordinates of X = 2,620,600.00 and Y = 285,455.00, said point being on the West line of said Block 36, Main Pass Area, Revised; thence North 7,375.00 feet on and along said West line of said Block 36, Main Pass Area, Revised, to a point having Coordinates of X = 2,620,600.00 and Y = 292,830.00, said point being the Northwest corner of said Block 36, Main Pass Area, Revised; thence East 3,650.00 feet on and along the North line of said Block 36, Main Pass Area, Revised, to a point having Coordinates of X = 2,624,250.00 and Y = 292,830.00; thence continue East 7,878.78 feet on and along said North line of said Block 36, Main Pass Area, Revised, to a point having Coordinates of X = 2,632,128.78 and Y = 292,830.00; thence continue East 3,221.22 feet on and along said North line of said Block 36, Main Pass Area, Revised, to the point of beginning, containing **2,497.27 acres**

, all as more particularly outlined on a plat on file in the Office of Mineral Resources, Department of Natural Resources. All bearings, distances and coordinates are based on Louisiana Coordinate System of 1927, (North or South Zone), where applicable.

NOTE: The above description of the Tract nominated for lease has been provided and corrected, where required, exclusively by the nomination party. Any mineral lease selected from this Tract and awarded by the Louisiana State Mineral Board shall be without warranty of any kind, either express, implied, or statutory, including, but not limited to, the implied warranties of merchantability and fitness for a particular purpose. Should the mineral lease awarded by the Louisiana State Mineral Board be subsequently modified, cancelled or abrogated due to the existence of conflicting leases, operating agreements, private claims or other future obligations or conditions which may affect all or any portion of the leased Tract, it shall not relieve the Lessee of the obligation to pay any bonus due thereon to the Louisiana State Mineral Board, nor shall the Louisiana State Mineral Board be obligated to refund any consideration paid by the Lessor prior to such modification, cancellation, or abrogation, including, but not limited to, bonuses, rentals and royalties.

NOTE: The State of Louisiana does hereby reserve, and this lease shall be subject to, the imprescriptible right of surface use in the nature of a

servitude in favor of the Department of Natural Resources, including its Offices and Commissions, for the sole purpose of implementing, constructing, servicing and maintaining approved coastal zone management and/or restoration projects. Utilization of any and all rights derived under this lease by the mineral lessee, its agents, successors or assigns, shall not interfere with nor hinder the reasonable surface use by the Department of Natural Resources, its Offices or Commissions, as herein above reserved.

NOTE: The Department of Wildlife and Fisheries has designated certain areas in the coastal waters of the State of Louisiana as Oyster Seed Bed Areas. The exact location of those Seed Bed Areas must be obtained from the Department of Wildlife and Fisheries and any work done under a mineral lease from the State of Louisiana may necessarily be conducted in conformity with the rules and regulations promulgated by the said Department of Wildlife and Fisheries for Oyster Seed Bed Areas.

Applicant: ROBERT A. SCHROEDER, INC.

Bidder	Cash Payment	Price/Acre	Rental	Oil	Gas	Other

Legend

- 09010015
- Blocks
- Active_Leases

GULF OF MEXICO

MAIN PASS AREA, REVISED

PLAQUEMINES PARISH

BS0048

P.O.B.

BS0049

SL 18011

MP0031

SL 2125

MP0036



MP0032

SL 1958

SL 1961

MP0035

TRACT 40780 - Portion of Block 36, Main Pass Area, Revised, Plaquemines Parish, Louisiana

All of the lands now or formerly constituting the beds and bottoms of all water bodies of every nature and description as to which title is vested in the State of Louisiana, together with all islands arising therein and other lands formed by accretion or by reliction, where allowed by law, excepting tax adjudicated lands, and not presently under mineral lease on January 14, 2009, situated in Plaquemines Parish, Louisiana, and more particularly described as follows:

Beginning at the Southeast corner of Block 36, Main Pass Area, Revised, having Coordinates of X = 2,635,350.00 and Y = 278,080.00; thence West 10,222.91 feet on and along the South line of said Block 36, Main Pass Area, Revised, to a point having Coordinates of X = 2,625,127.09 and Y = 278,080.00; thence West 4,527.09 feet on and along said South line of said Block 36, Main Pass Area, Revised, to a point having Coordinates of X = 2,620,600.00 and Y = 278,080.00, said point being the Southwest corner of said Block 36, Main Pass Area, Revised; thence North 7,375.00 feet on and along the West line of said Block 36, Main Pass Area, Revised, to a point having Coordinates of X = 2,620,600.00 and Y = 285,455.00; thence East 14,750.00 feet to a point having Coordinates of X = 2,635,350.00 and Y = 285,455.00, said point being on the East line of said Block 36, Main Pass Area, Revised; thence South 868.00 feet on and along said East line of said Block 36, Main Pass Area, Revised, to a point having Coordinates of X = 2,635,350.00 and Y = 284,587.00, said point being the Northeast corner of State Lease No. 18014, as amended; thence on and along the Northern, Western and Southern boundaries of said State Lease No. 18014, as amended, the following courses and distances, to wit: West 4,941.00 feet to a point having Coordinates of X = 2,630,409.00 and Y = 284,587.00, said point being the Northwest corner of said State Lease No. 18014, as amended; South 3,818.26 feet to a point having Coordinates of X = 2,630,409.00 and Y = 280,768.74, said point being the Southwest corner of said State Lease No. 18014, as amended; South 76 degrees 49 minutes 26 seconds East 3,328.63 feet to a point having Coordinates of X = 2,633,650.00 and Y = 280,010.00; North 1,180.00 feet to a point having Coordinates of X = 2,633,650.00 and Y = 281,190.00; and North 64 degrees 31 minutes 25 seconds East 1,883.11 feet to a point having Coordinates of X = 2,635,350.00 and Y = 282,000.00, said point being the Easternmost Southeast corner of said State Lease No. 18014, as amended, said point also being on said East line of said Block 36, Main Pass Area, Revised; thence South 3,920.00 feet on and along said East line of said Block 36, Main Pass Area, Revised, to the point of beginning, containing **2,068.19 acres**, all as more particularly outlined on a plat on file in the Office of Mineral Resources, Department of Natural Resources. All bearings, distances and coordinates are based on Louisiana Coordinate System of 1927, (North or South Zone), where applicable.

NOTE: The above description of the Tract nominated for lease has been provided and corrected, where required, exclusively by the nomination party. Any mineral lease selected from this Tract and awarded by the

Louisiana State Mineral Board shall be without warranty of any kind, either express, implied, or statutory, including, but not limited to, the implied warranties of merchantability and fitness for a particular purpose. Should the mineral lease awarded by the Louisiana State Mineral Board be subsequently modified, cancelled or abrogated due to the existence of conflicting leases, operating agreements, private claims or other future obligations or conditions which may affect all or any portion of the leased Tract, it shall not relieve the Lessee of the obligation to pay any bonus due thereon to the Louisiana State Mineral Board, nor shall the Louisiana State Mineral Board be obligated to refund any consideration paid by the Lessor prior to such modification, cancellation, or abrogation, including, but not limited to, bonuses, rentals and royalties.

NOTE: The State of Louisiana does hereby reserve, and this lease shall be subject to, the imprescriptible right of surface use in the nature of a servitude in favor of the Department of Natural Resources, including its Offices and Commissions, for the sole purpose of implementing, constructing, servicing and maintaining approved coastal zone management and/or restoration projects. Utilization of any and all rights derived under this lease by the mineral lessee, its agents, successors or assigns, shall not interfere with nor hinder the reasonable surface use by the Department of Natural Resources, its Offices or Commissions, as herein above reserved.

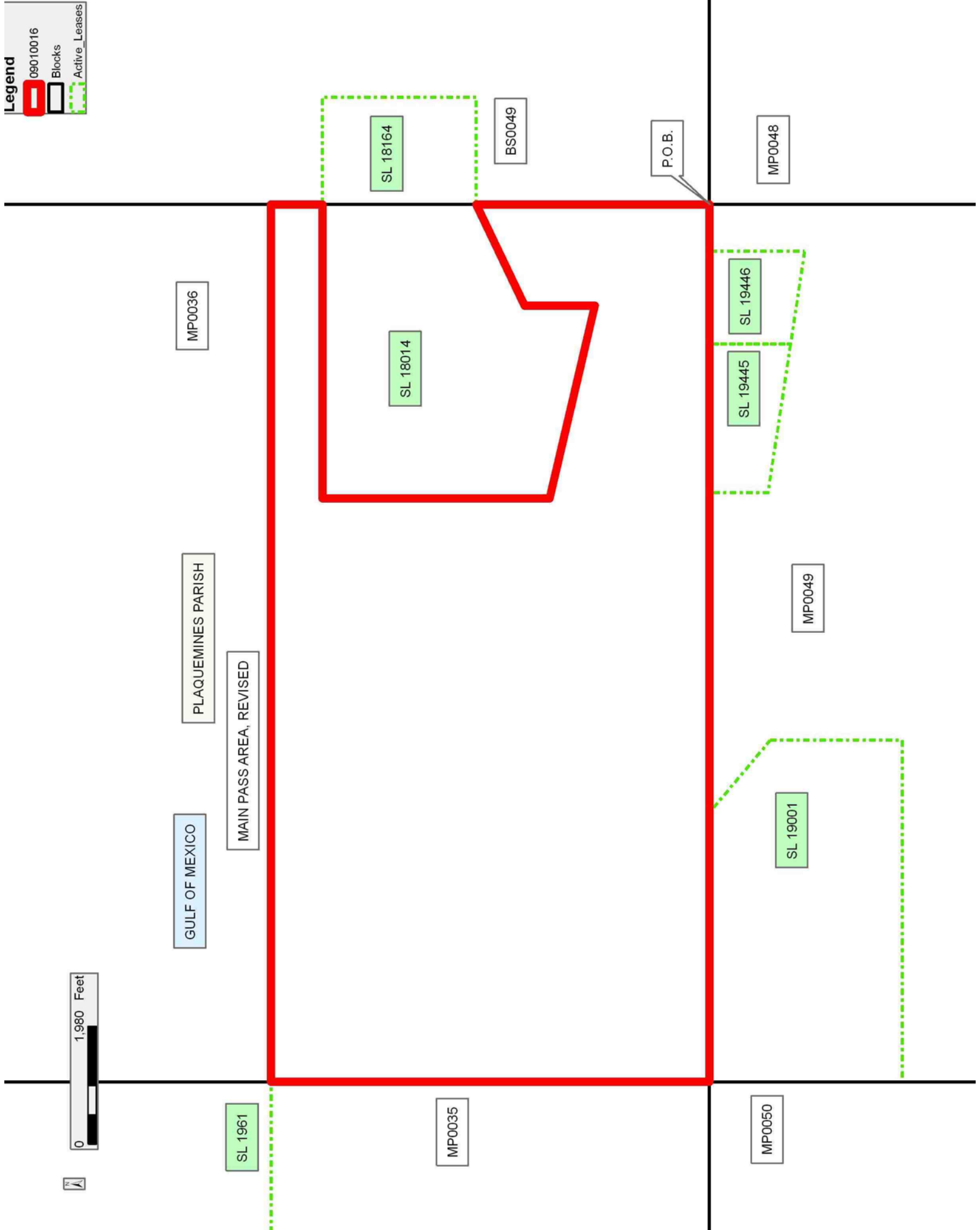
NOTE: The Department of Wildlife and Fisheries has designated certain areas in the coastal waters of the State of Louisiana as Oyster Seed Bed Areas. The exact location of those Seed Bed Areas must be obtained from the Department of Wildlife and Fisheries and any work done under a mineral lease from the State of Louisiana may necessarily be conducted in conformity with the rules and regulations promulgated by the said Department of Wildlife and Fisheries for Oyster Seed Bed Areas.

Applicant: ROBERT A. SCHROEDER, INC.

Bidder	Cash Payment	Price/Acre	Rental	Oil	Gas	Other

Legend

- 09010016
- Blocks
- Active_Leases



MP0036

PLAQUEMINES PARISH

GULF OF MEXICO

MAIN PASS AREA, REVISED

SL 1961

SL 18164

BS0049

P.O.B.

MP0048

SL 18014

SL 19446

SL 19445

MP0049

SL 19001

MP0035

MP0050

TRACT 40781 - Plaquemines Parish, Louisiana

All of the lands now or formerly constituting the beds and bottoms of all water bodies of every nature and description as to which title is vested in the State of Louisiana, together with all islands arising therein and other lands formed by accretion or by reliction, where allowed by law, excepting tax adjudicated lands, and not presently under mineral lease on January 14, 2009, situated in Plaquemines Parish, Louisiana, and more particularly described as follows: Beginning at a point having Coordinates of X = 2,511,960.99 and Y = 280,208.23, said point of beginning being on the East Boundary of State Lease No. 19346; thence North 87 Degrees 58 Minutes 12 Seconds East a distance of 16,928.70 feet to a point having Coordinates of X = 2,528,879.07 and Y = 280,807.89; thence South 01 Degrees 23 Minutes 55 Seconds East a distance of 15,614.99 feet to a point having Coordinates of X = 2,529,260.15 and Y = 265,197.55; thence South 87 Degrees 34 Minutes 55 Seconds West a distance of 17,090.32 feet to a point having Coordinates of X = 2,512,185.04 and Y = 264,476.51, said point being on the East Boundary of State Lease No. 19339; thence North 00 Degrees 19 Minutes 12 Seconds West along the East Boundary of said State Lease No. 19339 a distance of 2,169.44 feet to a point having Coordinates of X = 2,512,172.93 feet and Y = 266,645.92 feet, said point being the Northeast Corner of State Lease 19339 and the Southeast Corner of State Lease No. 19345; thence North 00 Degrees 53 Minutes 43 Seconds West along the East Boundary of said State Lease No. 19345 a distance of 7,920.02 feet to a point having Coordinates of X = 2,512,049.18 and Y = 274,564.97, said point being the Northeast Corner of State Lease No. 19345 and the Southeast Corner of State Lease No. 19346; thence North 00 Degrees 53 Minutes 43 Seconds West along the East Boundary of said State Lease No. 19346 a distance of 5,643.94 feet to the point of beginning, **LESS AND EXCEPT** that portion thereof situated within the boundaries of State of Louisiana State Lease No. 1753, as amended, and more particularly described as follows, to wit: Beginning at a point on the above tract having Coordinates of X = 2,511,960.99 and Y = 280,208.23; thence South 55 degrees 42 minutes 51 seconds East 14,286.70 feet to a point having Coordinates of X = 2,523,765.19 and Y = 272,160.20, said point of beginning being the Northeast Corner of State Lease No. 1753; thence South 00 Degrees 08 Minutes 10 Seconds East, a distance of 4,580.58 feet to a point having Coordinates of X = 2,523,776.08 and Y = 267,579.64; thence South 89 Degrees 15 Minutes 00 Seconds West, a distance of 4,747.81 feet to a point having Coordinates of X = 2,519,028.68 and Y = 267,517.49; thence North 00 Degrees 45 Minutes 00 Seconds West, a distance of 4,580.32 feet to a point having Coordinates of X = 2,518,968.73 and Y = 272,097.41; thence North 89 Degrees 15 Minutes 00 Seconds East, a distance of 4,796.88 feet to point of beginning, containing approximately **1,887 acres**, all as more particularly outlined on a plat on file in the Office of Mineral Resources, Department of Natural Resources. All bearings, distances and coordinates are based on Louisiana Coordinate System of 1927, (North or South Zone), where applicable.

NOTE: The above description of the Tract nominated for lease has been provided and corrected, where required, exclusively by the nomination party. Any mineral lease selected from this Tract and awarded by the Louisiana State Mineral Board shall be without warranty of any kind, either express, implied, or statutory, including, but not limited to, the implied warranties of merchantability and fitness for a particular purpose. Should the mineral lease awarded by the Louisiana State Mineral Board be subsequently modified, cancelled or abrogated due to the existence of conflicting leases, operating agreements, private claims or other future obligations or conditions which may affect all or any portion of the leased Tract, it shall not relieve the Lessee of the obligation to pay any bonus due thereon to the Louisiana State Mineral Board, nor shall the Louisiana State Mineral Board be obligated to refund any consideration paid by the Lessor prior to such modification, cancellation, or abrogation, including, but not limited to, bonuses, rentals and royalties.

NOTE: The State of Louisiana does hereby reserve, and this lease shall be subject to, the imprescriptible right of surface use in the nature of a servitude in favor of the Department of Natural Resources, including its Offices and Commissions, for the sole purpose of implementing, constructing, servicing and maintaining approved coastal zone management and/or restoration projects. Utilization of any and all rights derived under this lease by the mineral lessee, its agents, successors or assigns, shall not interfere with nor hinder the reasonable surface use by the Department of Natural Resources, its Offices or Commissions, as herein above reserved.

Applicant: OIL LAND SERVICES, INC.

Bidder	Cash Payment	Price/Acre	Rental	Oil	Gas	Other

09010054
Active_Lease
DOQQ2004

BAY DE LA CHENIERE

BAY CHICOT

BAYOU DES PLANTINS

GRAND BAYOU

PLAQUEMINES PARISH

SHORTWAY BAYOU

SL 1753

0 3,000 Feet

P.O.B.

SL 19346

SL 19345

LAKE WASHINGTON

TRACT 40782 - Plaquemines Parish, Louisiana

All of the lands now or formerly constituting the beds and bottoms of all water bodies of every nature and description as to which title is vested in the State of Louisiana, together with all islands arising therein and other lands formed by accretion or by reliction, where allowed by law, excepting tax adjudicated lands, and not presently under mineral lease on January 14, 2009, situated in Plaquemines Parish, Louisiana, and more particularly described as follows: Beginning at a point having Coordinates of X = 2,523,765.19 and Y = 272,160.20, said point of beginning being the Northeast Corner of State Lease No. 1753; thence South 00 Degrees 08 Minutes 10 Seconds East, a distance of 4,580.58 feet to a point having Coordinates of X = 2,523,776.08 and Y = 267,579.64; thence South 89 Degrees 15 Minutes 00 Seconds West, a distance of 4,747.81 feet to a point having Coordinates of X = 2,519,028.68 and Y = 267,517.49; thence North 00 Degrees 45 Minutes 00 Seconds West, a distance of 4,580.32 feet to a point having Coordinates of X = 2,518,968.73 and Y = 272,097.41; thence North 89 Degrees 15 Minutes 00 Seconds East, a distance of 4,796.88 feet to point of beginning containing approximately **70 acres**, all as more particularly outlined on a plat on file in the Office of Mineral Resources, Department of Natural Resources. All bearings, distances and coordinates are based on Louisiana Coordinate System of 1927, (North or South Zone), where applicable.

NOTE: The above description of the Tract nominated for lease has been provided and corrected, where required, exclusively by the nomination party. Any mineral lease selected from this Tract and awarded by the Louisiana State Mineral Board shall be without warranty of any kind, either express, implied, or statutory, including, but not limited to, the implied warranties of merchantability and fitness for a particular purpose. Should the mineral lease awarded by the Louisiana State Mineral Board be subsequently modified, cancelled or abrogated due to the existence of conflicting leases, operating agreements, private claims or other future obligations or conditions which may affect all or any portion of the leased Tract, it shall not relieve the Lessee of the obligation to pay any bonus due thereon to the Louisiana State Mineral Board, nor shall the Louisiana State Mineral Board be obligated to refund any consideration paid by the Lessor prior to such modification, cancellation, or abrogation, including, but not limited to, bonuses, rentals and royalties.

NOTE: The State of Louisiana does hereby reserve, and this lease shall be subject to, the imprescriptible right of surface use in the nature of a servitude in favor of the Department of Natural Resources, including its Offices and Commissions, for the sole purpose of implementing, constructing, servicing and maintaining approved coastal zone management and/or restoration projects. Utilization of any and all rights derived under this lease by the mineral lessee, its agents, successors or assigns, shall not interfere with nor hinder the reasonable surface use by the

Department of Natural Resources, its Offices or Commissions, as herein above reserved.

Applicant: OIL LAND SERVICES, INC.

Bidder	Cash Payment	Price/Acre	Rental	Oil	Gas	Other

T19S - R28E

GRAND BAYOU

P.O.B.

PLAQUEMINES PARISH

SL 1753

SHORTWAY BAYOU

LAKE WASHINGTON

0 1,980 Feet



TRACT 40783 - Plaquemines Parish, Louisiana

All of the lands now or formerly constituting the beds and bottoms of all water bodies of every nature and description as to which title is vested in the State of Louisiana, together with all islands arising therein and other lands formed by accretion or by reliction, where allowed by law, excepting tax adjudicated lands, and not presently under mineral lease on January 14, 2009, situated in Plaquemines Parish, Louisiana, and more particularly described as follows: Beginning at a point having Coordinates of X = 2,520,722.43 and Y = 264,837.02; thence South 11,670.89 feet to a point having Coordinates of X = 2,520,722.43 and Y = 253,166.13; thence South 87 degrees 48 minutes 48 seconds West 7,820.24 feet to a point being the Northeast corner of State Lease No. 19341, having Coordinates of X = 2,512,907.89 and Y = 252,867.76; thence South 87 degrees 48 minutes 48 seconds West 657.81 feet along the Northern boundary of said State Lease No. 19341 to a point being the Southeast corner of State Lease No. 19339, having Coordinates of X = 2,512,250.56 and Y = 252,842.66; thence North 00 degrees 19 minutes 22 seconds West 11,634.03 feet along the Eastern boundary of said State Lease No. 19339 to a point having Coordinates of X = 2,512,185.04 and Y = 264,476.51; thence North 87 degrees 34 minutes 55 seconds East 8,545.00 feet to the point of beginning containing approximately **1,468 acres**, all as more particularly outlined on a plat on file in the Office of Mineral Resources, Department of Natural Resources. All bearings, distances and coordinates are based on Louisiana Coordinate System of 1927, (North or South Zone), where applicable.

NOTE: The above description of the Tract nominated for lease has been provided and corrected, where required, exclusively by the nomination party. Any mineral lease selected from this Tract and awarded by the Louisiana State Mineral Board shall be without warranty of any kind, either express, implied, or statutory, including, but not limited to, the implied warranties of merchantability and fitness for a particular purpose. Should the mineral lease awarded by the Louisiana State Mineral Board be subsequently modified, cancelled or abrogated due to the existence of conflicting leases, operating agreements, private claims or other future obligations or conditions which may affect all or any portion of the leased Tract, it shall not relieve the Lessee of the obligation to pay any bonus due thereon to the Louisiana State Mineral Board, nor shall the Louisiana State Mineral Board be obligated to refund any consideration paid by the Lessor prior to such modification, cancellation, or abrogation, including, but not limited to, bonuses, rentals and royalties.

NOTE: The State of Louisiana does hereby reserve, and this lease shall be subject to, the imprescriptible right of surface use in the nature of a servitude in favor of the Department of Natural Resources, including its Offices and Commissions, for the sole purpose of implementing, constructing, servicing and maintaining approved coastal zone management and/or restoration projects. Utilization of any and all rights derived under this lease by the mineral lessee, its agents, successors or assigns, shall not interfere with nor hinder the reasonable surface use by the

Department of Natural Resources, its Offices or Commissions, as herein above reserved.

Applicant: OIL LAND SERVICES, INC.

Bidder	Cash Payment	Price/Acre	Rental	Oil	Gas	Other

09010079

Active_Lease

DOQQ2004

P.O.B.

PLAQUEMINES PARISH

BAY AUX FERRE

BAY DE SUITE

LAKE WASHINGTON

SL 19339

SL 19341

GARDEN BAY

0 3,000 Feet



TRACT 40784 - Plaquemines Parish, Louisiana

All of the lands now or formerly constituting the beds and bottoms of all water bodies of every nature and description as to which title is vested in the State of Louisiana, together with all islands arising therein and other lands formed by accretion or by reliction, where allowed by law, excepting tax adjudicated lands, and not presently under mineral lease on January 14, 2009, situated in Plaquemines Parish, Louisiana, and more particularly described as follows: Beginning at a point having Coordinates of X = 2,529,260.15 and Y = 265,197.55; thence South 00 degrees 19 minutes 22 seconds East 11,703.10 feet to a point having Coordinates of X = 2,529,326.06 and Y = 253,494.63; thence South 87 degrees 48 minutes 48 seconds West 8,609.89 feet to a point having Coordinates of X = 2,520,722.43 and Y = 253,166.13; thence North 11,670.89 feet to a point having Coordinates of X = 2,520,722.43 and Y = 264,837.02; thence North 87 degrees 34 minutes 55 seconds East 8,545.32 feet to the point of beginning containing approximately **1,827 acres**

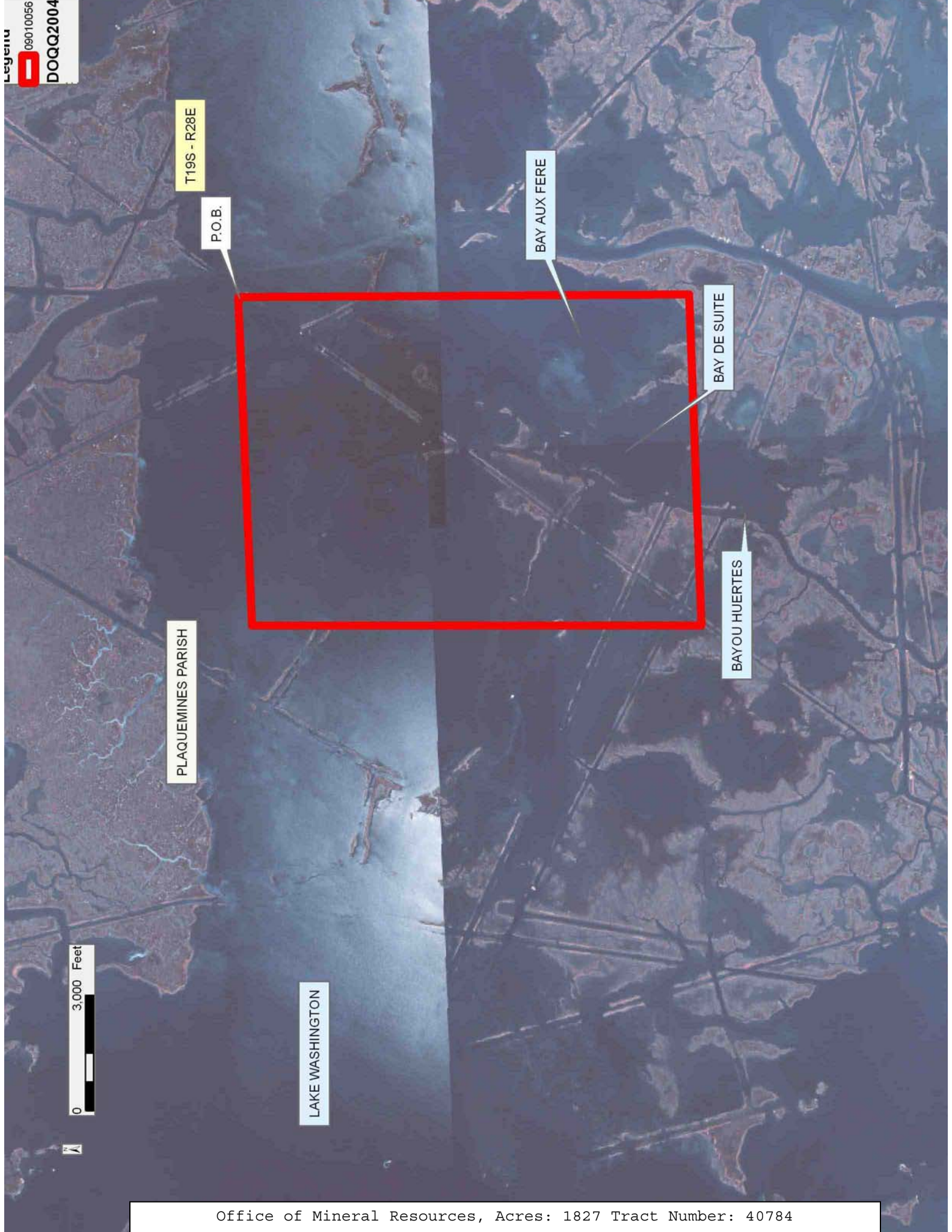
, all as more particularly outlined on a plat on file in the Office of Mineral Resources, Department of Natural Resources. All bearings, distances and coordinates are based on Louisiana Coordinate System of 1927, (North or South Zone), where applicable.

NOTE: The above description of the Tract nominated for lease has been provided and corrected, where required, exclusively by the nomination party. Any mineral lease selected from this Tract and awarded by the Louisiana State Mineral Board shall be without warranty of any kind, either express, implied, or statutory, including, but not limited to, the implied warranties of merchantability and fitness for a particular purpose. Should the mineral lease awarded by the Louisiana State Mineral Board be subsequently modified, cancelled or abrogated due to the existence of conflicting leases, operating agreements, private claims or other future obligations or conditions which may affect all or any portion of the leased Tract, it shall not relieve the Lessee of the obligation to pay any bonus due thereon to the Louisiana State Mineral Board, nor shall the Louisiana State Mineral Board be obligated to refund any consideration paid by the Lessor prior to such modification, cancellation, or abrogation, including, but not limited to, bonuses, rentals and royalties.

NOTE: The State of Louisiana does hereby reserve, and this lease shall be subject to, the imprescriptible right of surface use in the nature of a servitude in favor of the Department of Natural Resources, including its Offices and Commissions, for the sole purpose of implementing, constructing, servicing and maintaining approved coastal zone management and/or restoration projects. Utilization of any and all rights derived under this lease by the mineral lessee, its agents, successors or assigns, shall not interfere with nor hinder the reasonable surface use by the Department of Natural Resources, its Offices or Commissions, as herein above reserved.

Applicant: OIL LAND SERVICES, INC.

Bidder	Cash Payment	Price/Acre	Rental	Oil	Gas	Other



T19S - R28E

P.O.B.

BAY AUX FERES

BAY DE SUITE

BAYOU HUERTES

PLAQUEMINES PARISH

0 3,000 Feet

LAKE WASHINGTON

TRACT 40785 - Plaquemines Parish, Louisiana

All of the lands now or formerly constituting the beds and bottoms of all water bodies of every nature and description as to which title is vested in the State of Louisiana, together with all islands arising therein and other lands formed by accretion or by reliction, where allowed by law, excepting tax adjudicated lands, and not presently under mineral lease on January 14, 2009, situated in Plaquemines Parish, Louisiana, and more particularly described as follows: Beginning at a point having Coordinates of X = 2,529,326.06 and Y = 253,494.63; thence South 00 Degrees 23 Minutes 24 Seconds East, a distance of 14,957.75 feet to a point having Coordinates of X = 2,529,427.84 and Y = 238,537.23; thence South 87 Degrees 48 Minutes 48 Seconds West, a distance of 16,430.13 feet to the Southeast Corner of State Lease No. 19341 having Coordinates of X = 2,513,009.67 and Y = 237,910.36; thence North 00 Degrees 23 Minutes 24 Seconds West, along the East Boundary of said State Lease No. 19341 a distance of 14,957.75 feet to its Northeast Corner having Coordinates of X = 2,512,907.89 and Y = 252,867.76; thence North 87 Degrees 48 Minutes 48 Seconds East, a distance of 16,430.13 feet to point of beginning, containing approximately **1,837 acres**, all as more particularly outlined on a plat on file in the Office of Mineral Resources, Department of Natural Resources. All bearings, distances and coordinates are based on Louisiana Coordinate System of 1927, (North or South Zone), where applicable.

NOTE: The above description of the Tract nominated for lease has been provided and corrected, where required, exclusively by the nomination party. Any mineral lease selected from this Tract and awarded by the Louisiana State Mineral Board shall be without warranty of any kind, either express, implied, or statutory, including, but not limited to, the implied warranties of merchantability and fitness for a particular purpose. Should the mineral lease awarded by the Louisiana State Mineral Board be subsequently modified, cancelled or abrogated due to the existence of conflicting leases, operating agreements, private claims or other future obligations or conditions which may affect all or any portion of the leased Tract, it shall not relieve the Lessee of the obligation to pay any bonus due thereon to the Louisiana State Mineral Board, nor shall the Louisiana State Mineral Board be obligated to refund any consideration paid by the Lessor prior to such modification, cancellation, or abrogation, including, but not limited to, bonuses, rentals and royalties.

NOTE: The State of Louisiana does hereby reserve, and this lease shall be subject to, the imprescriptible right of surface use in the nature of a servitude in favor of the Department of Natural Resources, including its Offices and Commissions, for the sole purpose of implementing, constructing, servicing and maintaining approved coastal zone management and/or restoration projects. Utilization of any and all rights derived under this lease by the mineral lessee, its agents, successors or assigns, shall not interfere with nor hinder the reasonable surface use by the Department of Natural Resources, its Offices or Commissions, as herein above reserved.

Applicant: OIL LAND SERVICES, INC.

Bidder	Cash Payment	Price/Acre	Rental	Oil	Gas	Other



TRACT 40786 - Lafourche Parish, Louisiana

All of the lands now or formerly constituting the beds and bottoms of all water bodies of every nature and description as to which title is vested in the State of Louisiana, together with all islands arising therein and other lands formed by accretion or by reliction, where allowed by law, excepting tax adjudicated lands, and not presently under mineral lease on January 14, 2009, situated in Lafourche Parish, Louisiana, and more particularly described as follows: Beginning at a point having Coordinates of X = 2,313,642.78 and Y = 154,329.11; thence North 89 degrees 30 minutes 40 seconds East 7,839.61 feet to the most Easterly Northwest corner of State Lease No. 1772, as revised, having Coordinates of X = 2,321,482.10 and Y = 154,396.00; thence South 00 degrees 09 minutes 44 seconds East 1,184.08 along the boundary of said State Lease No. 1772, as revised, to a point having Coordinates of X = 2,321,485.45 and Y = 153,211.93; thence South 89 degrees 50 minutes 16 seconds West 7,870.08 to a point having Coordinates of X = 2,313,615.40 and Y = 153,189.66; thence North 1,139.78 feet to the point of beginning, containing **209.47 acres**, all as more particularly outlined on a plat on file in the Office of Mineral Resources, Department of Natural Resources. All bearings, distances and coordinates are based on Louisiana Coordinate System of 1927, (North or South Zone), where applicable.

NOTE: The above description of the Tract nominated for lease has been provided and corrected, where required, exclusively by the nomination party. Any mineral lease selected from this Tract and awarded by the Louisiana State Mineral Board shall be without warranty of any kind, either express, implied, or statutory, including, but not limited to, the implied warranties of merchantability and fitness for a particular purpose. Should the mineral lease awarded by the Louisiana State Mineral Board be subsequently modified, cancelled or abrogated due to the existence of conflicting leases, operating agreements, private claims or other future obligations or conditions which may affect all or any portion of the leased Tract, it shall not relieve the Lessee of the obligation to pay any bonus due thereon to the Louisiana State Mineral Board, nor shall the Louisiana State Mineral Board be obligated to refund any consideration paid by the Lessor prior to such modification, cancellation, or abrogation, including, but not limited to, bonuses, rentals and royalties.

NOTE: The State of Louisiana does hereby reserve, and this lease shall be subject to, the imprescriptible right of surface use in the nature of a servitude in favor of the Department of Natural Resources, including its Offices and Commissions, for the sole purpose of implementing, constructing, servicing and maintaining approved coastal zone management and/or restoration projects. Utilization of any and all rights derived under this lease by the mineral lessee, its agents, successors or assigns, shall not interfere with nor hinder the reasonable surface use by the Department of Natural Resources, its Offices or Commissions, as herein above reserved.

Applicant: AUDUBON OIL AND GAS CORPORATION

Bidder	Cash Payment	Price/Acre	Rental	Oil	Gas	Other

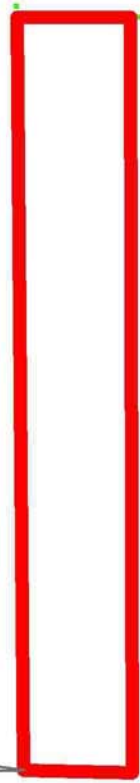
Legend
09010003
Active_Leases



LAFOURCHE PARISH

GULF OF MEXICO

P.O.B.



SL 1772

