

**TRACT 40757 - St. Mary Parish, Louisiana**

All of the lands now or formerly constituting the beds and bottoms of all water bodies of every nature and description as to which title is vested in the State of Louisiana, together with all islands arising therein and other lands formed by accretion or by reliction, where allowed by law, excepting tax adjudicated lands, and not presently under mineral lease on January 14, 2009, situated in St. Mary Parish, Louisiana, and more particularly described as follows: Beginning at a point having Coordinates of X = 1,912,127.00 and Y = 371,154.00; thence East 8,083.00 feet to a point having Coordinates of X = 1,920,210.00 and Y = 371,154.00; thence South 16,098.00 feet to a point having Coordinates of X = 1,920,210.00 and Y = 355,056.00; thence West 9,429.00 feet to a point having Coordinates of X = 1,910,781.00 and Y = 355,056.00; thence North 5,370.00 feet to a point having Coordinates of X = 1,910,781.00 and Y = 360,426.00; thence East 1,346.00 feet to a point having Coordinates of X = 1,912,127.00 and Y = 360,426.00; thence North 10,728.00 feet to the point of beginning, containing approximately **250 acres**, all as more particularly outlined on a plat on file in the Office of Mineral Resources, Department of Natural Resources. All bearings, distances and coordinates are based on Louisiana Coordinate System of 1927, (North or South Zone), where applicable.

NOTE: The above description of the Tract nominated for lease has been provided and corrected, where required, exclusively by the nomination party. Any mineral lease selected from this Tract and awarded by the Louisiana State Mineral Board shall be without warranty of any kind, either express, implied, or statutory, including, but not limited to, the implied warranties of merchantability and fitness for a particular purpose. Should the mineral lease awarded by the Louisiana State Mineral Board be subsequently modified, cancelled or abrogated due to the existence of conflicting leases, operating agreements, private claims or other future obligations or conditions which may affect all or any portion of the leased Tract, it shall not relieve the Lessee of the obligation to pay any bonus due thereon to the Louisiana State Mineral Board, nor shall the Louisiana State Mineral Board be obligated to refund any consideration paid by the Lessor prior to such modification, cancellation, or abrogation, including, but not limited to, bonuses, rentals and royalties.

NOTE: The State of Louisiana does hereby reserve, and this lease shall be subject to, the imprescriptible right of surface use in the nature of a servitude in favor of the Department of Natural Resources, including its Offices and Commissions, for the sole purpose of implementing, constructing, servicing and maintaining approved coastal zone management and/or restoration projects. Utilization of any and all rights derived under this lease by the mineral lessee, its agents, successors or assigns, shall not interfere with nor hinder the reasonable surface use by the Department of Natural Resources, its Offices or Commissions, as herein above reserved.

Applicant: PATRICK L. DONOHUE PETROLEUM PROPERTIES, INC.

Bidder	Cash Payment	Price/Acre	Rental	Oil	Gas	Other

09010068  
Sections  
Township  
DOQQ200

SEC 33

SEC 32

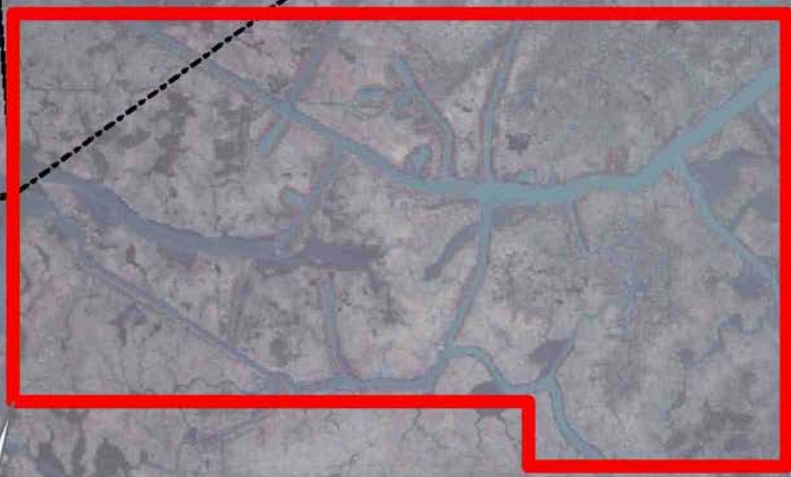
SEC 31

T15S - R9E

T16S - R9E

ST MARY PARISH

P.O.B.



**TRACT 40758 - Vermilion Parish, Louisiana**

A portion of the bed and bottom of White Lake created by shoreline erosion since November of 1942, and therefore not in existence at the time Special Act No. 92 of the 1942 Regular Session of the Louisiana Legislature was enacted, claimed as one hundred percent (100%) owned by the State of Louisiana, not presently under mineral lease by the State of Louisiana on January 14, 2009 and being more particularly described as follows: Beginning at a point having Coordinates of X = 1,622,800.00 and Y = 363,628.09; thence North approximately 10,519 feet to a point of intersection with the 1942 Shoreline of White Lake having a Coordinate of X = 1,622,800.00; thence along the meanders of said 1942 Shoreline of White Lake the following: Southeasterly, Southwesterly and Southeasterly to a point of intersection with a North-South line having a Coordinate of X = 1,641,280.00; thence South approximately 3,409 feet along said line to a point having Coordinates of X = 1,641,280.00 and Y = 363,628.09; thence West 18,480.00 feet to the point of beginning, containing approximately **295 acres**, all as more particularly outlined on a plat on file in the Office of Mineral Resources, Department of Natural Resources. All bearings, distances and coordinates are based on Louisiana Coordinate System of 1927, (South Zone).

NOTE: Any lease on this Tract shall contain the following language, to wit: "Should a title dispute arise regarding this leased acreage and litigation ensue, lessee herein agrees to pay the State as billed by the State, any and all legal costs incurred by the State of Louisiana in defending its title to said leased acreage up to a maximum aggregate amount of one hundred fifty thousand and no/100 dollars (\$150,000.00) for all leases in the same area by the same lessee."

NOTE: The above description of the Tract nominated for lease has been provided and corrected, where required, exclusively by the nomination party. Any mineral lease selected from this Tract and awarded by the Louisiana State Mineral Board shall be without warranty of any kind, either express, implied, or statutory, including, but not limited to, the implied warranties of merchantability and fitness for a particular purpose. Should the mineral lease awarded by the Louisiana State Mineral Board be subsequently modified, cancelled or abrogated due to the existence of conflicting leases, operating agreements, private claims or other future obligations or conditions which may affect all or any portion of the leased Tract, it shall not relieve the Lessee of the obligation to pay any bonus due thereon to the Louisiana State Mineral Board, nor shall the Louisiana State Mineral Board be obligated to refund any consideration paid by the Lessor prior to such modification, cancellation, or abrogation, including, but not limited to, bonuses, rentals and royalties.

NOTE: The Office of Mineral Resources will require a minimum bonus of \$300 per acre and a minimum royalty of 25%.

NOTE: The State of Louisiana does hereby reserve, and this lease shall be subject to, the imprescriptible right of surface use in the nature of a servitude in favor of the Department of Natural Resources, including its Offices and Commissions, for the sole purpose of implementing, constructing, servicing and maintaining approved coastal zone management and/or restoration projects. Utilization of any and all rights derived under this lease by the mineral lessee, its agents, successors or assigns, shall not interfere with nor hinder the reasonable surface use by the Department of Natural Resources, its Offices or Commissions, as herein above reserved.

Applicant: JOSEPH M. BENOIT

Bidder	Cash Payment	Price/Acre	Rental	Oil	Gas	Other



VERMILION PARISH

WHITE LAKE



T15S - R1W

T15S - R2W

P.O.B.

**TRACT 40759 - St. Mary Parish, Louisiana**

All of the lands now or formerly constituting the beds and bottoms of all water bodies of every nature and description as to which title is vested in the State of Louisiana, together with all islands arising therein and other lands formed by accretion or by reliction, where allowed by law, excepting tax adjudicated lands, and not presently under mineral lease on January 14, 2009, situated in St. Mary Parish, Louisiana, and more particularly described as follows: Beginning at a point having Coordinates of X = 1,889,661.00 and Y = 367,123.50; thence East 9,230.00 feet to a point having Coordinates of X = 1,898,891.00 and Y = 367,123.50; thence South 12,067.50 feet to a point having Coordinates of X = 1,898,891.00 and Y = 355,056.00; thence West 5,230.00 feet to a point having Coordinates of X = 1,893,661.00 and Y = 355,056.00; thence North 5,370.00 feet to a point having Coordinates of X = 1,893,661.00 and Y = 360,426.00; thence West 4,000.00 feet to a point having Coordinates of X = 1,889,661.00 and Y = 360,426.00; thence North 6,697.50 feet to the point of beginning, containing approximately **2,063.89 acres**, all as more particularly outlined on a plat on file in the Office of Mineral Resources, Department of Natural Resources. All bearings, distances and coordinates are based on Louisiana Coordinate System of 1927, (North or South Zone), where applicable.

NOTE: The above description of the Tract nominated for lease has been provided and corrected, where required, exclusively by the nomination party. Any mineral lease selected from this Tract and awarded by the Louisiana State Mineral Board shall be without warranty of any kind, either express, implied, or statutory, including, but not limited to, the implied warranties of merchantability and fitness for a particular purpose. Should the mineral lease awarded by the Louisiana State Mineral Board be subsequently modified, cancelled or abrogated due to the existence of conflicting leases, operating agreements, private claims or other future obligations or conditions which may affect all or any portion of the leased Tract, it shall not relieve the Lessee of the obligation to pay any bonus due thereon to the Louisiana State Mineral Board, nor shall the Louisiana State Mineral Board be obligated to refund any consideration paid by the Lessor prior to such modification, cancellation, or abrogation, including, but not limited to, bonuses, rentals and royalties.

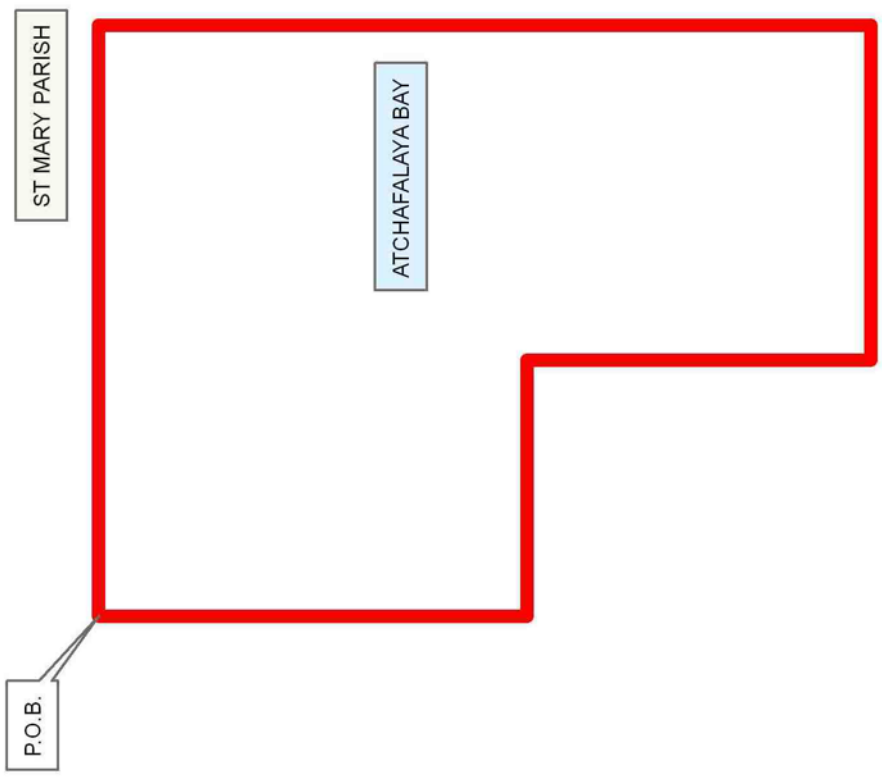
NOTE: The State of Louisiana does hereby reserve, and this lease shall be subject to, the imprescriptible right of surface use in the nature of a servitude in favor of the Department of Natural Resources, including its Offices and Commissions, for the sole purpose of implementing, constructing, servicing and maintaining approved coastal zone management and/or restoration projects. Utilization of any and all rights derived under this lease by the mineral lessee, its agents, successors or assigns, shall not interfere with nor hinder the reasonable surface use by the Department of Natural Resources, its Offices or Commissions, as herein above reserved.

NOTE: The Department of Wildlife and Fisheries has designated certain areas in the coastal waters of the State of Louisiana as Oyster Seed Bed Areas. The exact location of those Seed Bed Areas must be obtained from the Department of Wildlife and Fisheries and any work done under a mineral lease from the State of Louisiana may necessarily be conducted in conformity with the rules and regulations promulgated by the said Department of Wildlife and Fisheries for Oyster Seed Bed Areas.

Applicant: PATRICK L. DONOHUE PETROLEUM PROPERTIES, INC.

Bidder	Cash Payment	Price/Acre	Rental	Oil	Gas	Other





**TRACT 40760 - St. Mary Parish, Louisiana**

All of the lands now or formerly constituting the beds and bottoms of all water bodies of every nature and description as to which title is vested in the State of Louisiana, together with all islands arising therein and other lands formed by accretion or by reliction, where allowed by law, excepting tax adjudicated lands, and not presently under mineral lease on January 14, 2009, situated in St. Mary Parish, Louisiana, and more particularly described as follows: Beginning at a point having Coordinates of X = 1,898,891.00 and Y = 367,123.50; thence East 3,473.48 feet to a point on the West boundary of State Lease No. 9410, as amended, having Coordinates of X = 1,902,364.48 and Y = 367,123.50; thence along the boundary of said State Lease No. 9410 the following courses: South 08 degrees 31 minutes 46 seconds East 1,475.26 feet and South 87 degrees 05 minutes 15 seconds East 2,929.49 feet to a point on its South boundary having Coordinates of X = 1,905,509.00 and Y = 365,515.71; thence South 10,459.71 feet to a point having Coordinates of X = 1,905,509.00 and Y = 355,056.00; thence West 6,618.00 feet to a point having Coordinates of X = 1,898,891.00 and Y = 355,056.00; thence North 12,067.50 feet to the point of beginning, containing approximately **1,646 acres**, all as more particularly outlined on a plat on file in the Office of Mineral Resources, Department of Natural Resources. All bearings, distances and coordinates are based on Louisiana Coordinate System of 1927, (North or South Zone), where applicable.

NOTE: The above description of the Tract nominated for lease has been provided and corrected, where required, exclusively by the nomination party. Any mineral lease selected from this Tract and awarded by the Louisiana State Mineral Board shall be without warranty of any kind, either express, implied, or statutory, including, but not limited to, the implied warranties of merchantability and fitness for a particular purpose. Should the mineral lease awarded by the Louisiana State Mineral Board be subsequently modified, cancelled or abrogated due to the existence of conflicting leases, operating agreements, private claims or other future obligations or conditions which may affect all or any portion of the leased Tract, it shall not relieve the Lessee of the obligation to pay any bonus due thereon to the Louisiana State Mineral Board, nor shall the Louisiana State Mineral Board be obligated to refund any consideration paid by the Lessor prior to such modification, cancellation, or abrogation, including, but not limited to, bonuses, rentals and royalties.

NOTE: The State of Louisiana does hereby reserve, and this lease shall be subject to, the imprescriptible right of surface use in the nature of a servitude in favor of the Department of Natural Resources, including its Offices and Commissions, for the sole purpose of implementing, constructing, servicing and maintaining approved coastal zone management and/or restoration projects. Utilization of any and all rights derived under this lease by the mineral lessee, its agents, successors or assigns, shall not interfere with nor hinder the reasonable surface use by the

Department of Natural Resources, its Offices or Commissions, as herein above reserved.

NOTE: The Department of Wildlife and Fisheries has designated certain areas in the coastal waters of the State of Louisiana as Oyster Seed Bed Areas. The exact location of those Seed Bed Areas must be obtained from the Department of Wildlife and Fisheries and any work done under a mineral lease from the State of Louisiana may necessarily be conducted in conformity with the rules and regulations promulgated by the said Department of Wildlife and Fisheries for Oyster Seed Bed Areas.

Applicant: PATRICK L. DONOHUE PETROLEUM PROPERTIES, INC.

Bidder	Cash Payment	Price/Acre	Rental	Oil	Gas	Other

09010067

Active\_Lease

DOQQ2004



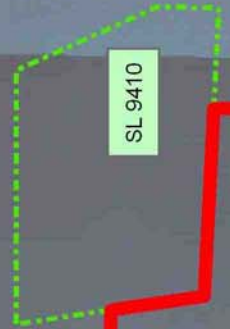
0 3,000 Feet



ST MARY PARISH

P.O.B.

SL 9410



**TRACT 40761 - St. Mary Parish, Louisiana**

All of the lands now or formerly constituting the beds and bottoms of all water bodies of every nature and description as to which title is vested in the State of Louisiana, together with all islands arising therein and other lands formed by accretion or by reliction, where allowed by law, excepting tax adjudicated lands, and not presently under mineral lease on January 14, 2009, situated in St. Mary Parish, Louisiana, and more particularly described as follows: Beginning at a point on the East boundary of State Lease No. 13470 having Coordinates of X = 1,908,298.00 and Y = 367,123.50; thence East 3,829.00 feet to a point having Coordinates of X = 1,912,127.00 and Y = 367,123.50; thence South 6,697.50 feet to a point having Coordinates of X = 1,912,127.00 and Y = 360,426.00; thence West 1,346.00 feet to a point having Coordinates of X = 1,910,781.00 and Y = 360,426.00; thence South 5,370.00 feet to a point having Coordinates of X = 1,910,781.00 and Y = 355,056.00; thence West 5,272.00 feet to a point having Coordinates of X = 1,905,509.00 and Y = 355,056.00; thence North 10,459.71 feet to a point on the South boundary of State Lease No. 9410, as amended, having Coordinates of X = 1,905,509.00 and Y = 365,515.71; thence South 87 degrees 05 minutes 15 seconds East 1,576.39 feet along the South boundary of said State Lease No. 9410 to a point on the West boundary of State Lease No. 17290 having Coordinates of X = 1,907,083.35 and Y = 365,435.61; thence along the boundary of said State Lease No. 17290 the following courses: South 00 degrees 12 minutes 34 seconds West 3,235.63 feet; East 1,528.48 feet; North 4,045.00 feet and West 302.00 feet to a point on its North boundary, also being the Southeast corner of said State Lease No. 13470 having Coordinates of X = 1,908,298.00 and Y = 366,245.00; thence North 878.50 feet along the East boundary of said State Lease No. 13470 to the point of beginning, containing approximately **289 acres**, all as more particularly outlined on a plat on file in the Office of Mineral Resources, Department of Natural Resources. All bearings, distances and coordinates are based on Louisiana Coordinate System of 1927, (North or South Zone), where applicable.

NOTE: The above description of the Tract nominated for lease has been provided and corrected, where required, exclusively by the nomination party. Any mineral lease selected from this Tract and awarded by the Louisiana State Mineral Board shall be without warranty of any kind, either express, implied, or statutory, including, but not limited to, the implied warranties of merchantability and fitness for a particular purpose. Should the mineral lease awarded by the Louisiana State Mineral Board be subsequently modified, cancelled or abrogated due to the existence of conflicting leases, operating agreements, private claims or other future obligations or conditions which may affect all or any portion of the leased Tract, it shall not relieve the Lessee of the obligation to pay any bonus due thereon to the Louisiana State Mineral Board, nor shall the Louisiana State Mineral Board be obligated to refund any consideration paid by the Lessor prior to such modification, cancellation, or abrogation, including, but not limited to, bonuses, rentals and royalties.

NOTE: The State of Louisiana does hereby reserve, and this lease shall be subject to, the imprescriptible right of surface use in the nature of a servitude in favor of the Department of Natural Resources, including its Offices and Commissions, for the sole purpose of implementing, constructing, servicing and maintaining approved coastal zone management and/or restoration projects. Utilization of any and all rights derived under this lease by the mineral lessee, its agents, successors or assigns, shall not interfere with nor hinder the reasonable surface use by the Department of Natural Resources, its Offices or Commissions, as herein above reserved.

NOTE: The Department of Wildlife and Fisheries has designated certain areas in the coastal waters of the State of Louisiana as Oyster Seed Bed Areas. The exact location of those Seed Bed Areas must be obtained from the Department of Wildlife and Fisheries and any work done under a mineral lease from the State of Louisiana may necessarily be conducted in conformity with the rules and regulations promulgated by the said Department of Wildlife and Fisheries for Oyster Seed Bed Areas.

Applicant: PATRICK L. DONOHUE PETROLEUM PROPERTIES, INC.

Bidder	Cash Payment	Price/Acre	Rental	Oil	Gas	Other

**Legend**

- 09010068
- Active\_Leases
- Sections
- Townships

**DOQQ2004**

T16S - R9E

ST MARY PARISH

P.O.B.

SL 13470

SL 17290

SL 9410

0 3,000 Feet



**TRACT 40762 - Portion of Block 30, Breton Sound Area, Plaquemines Parish, Louisiana**

All of the lands now or formerly constituting the beds and bottoms of all water bodies of every nature and description as to which title is vested in the State of Louisiana, together with all islands arising therein and other lands formed by accretion or by reliction, where allowed by law, excepting tax adjudicated lands, and not presently under mineral lease on January 14, 2009, situated in Plaquemines Parish, Louisiana, and more particularly described as follows: Beginning at a point having Coordinates of X = 2,664,850.00 and Y = 337,080.00, said point being the Northwest corner of Block 30, Breton Sound Area; thence East 14,750.00 feet on and along the North line of said Block 30, Breton Sound Area, to a point having Coordinates of X = 2,679,600.00 and Y = 337,080.00, said point being the Northeast corner of said Block 30, Breton Sound Area; thence South 7,375.00 feet on and along the East line of said Block 30, Breton Sound Area, to a point having Coordinates of X = 2,679,600.00 and Y = 329,705.00; thence West 9,660.00 feet to a point having Coordinates of X = 2,669,940.00 and Y = 329,705.00; thence continue West 5,090.00 feet to a point having Coordinates of X = 2,664,850.00 and Y = 329,705.00, said point being on the West line of said Block 30, Breton Sound Area; thence North 7,375.00 feet on and along the West line of said Block 30, Breton Sound Area, to the point of beginning, containing **2,497.27 acres**, all as more particularly outlined on a plat on file in the Office of Mineral Resources, Department of Natural Resources. All bearings, distances and coordinates are based on Louisiana Coordinate System of 1927, (North or South Zone), where applicable.

NOTE: The above description of the Tract nominated for lease has been provided and corrected, where required, exclusively by the nomination party. Any mineral lease selected from this Tract and awarded by the Louisiana State Mineral Board shall be without warranty of any kind, either express, implied, or statutory, including, but not limited to, the implied warranties of merchantability and fitness for a particular purpose. Should the mineral lease awarded by the Louisiana State Mineral Board be subsequently modified, cancelled or abrogated due to the existence of conflicting leases, operating agreements, private claims or other future obligations or conditions which may affect all or any portion of the leased Tract, it shall not relieve the Lessee of the obligation to pay any bonus due thereon to the Louisiana State Mineral Board, nor shall the Louisiana State Mineral Board be obligated to refund any consideration paid by the Lessor prior to such modification, cancellation, or abrogation, including, but not limited to, bonuses, rentals and royalties.

NOTE: The State of Louisiana does hereby reserve, and this lease shall be subject to, the imprescriptible right of surface use in the nature of a servitude in favor of the Department of Natural Resources, including its Offices and Commissions, for the sole purpose of implementing, constructing, servicing and maintaining approved coastal zone management and/or restoration projects. Utilization of any and all rights derived



under this lease by the mineral lessee, its agents, successors or assigns, shall not interfere with nor hinder the reasonable surface use by the Department of Natural Resources, its Offices or Commissions, as herein above reserved.

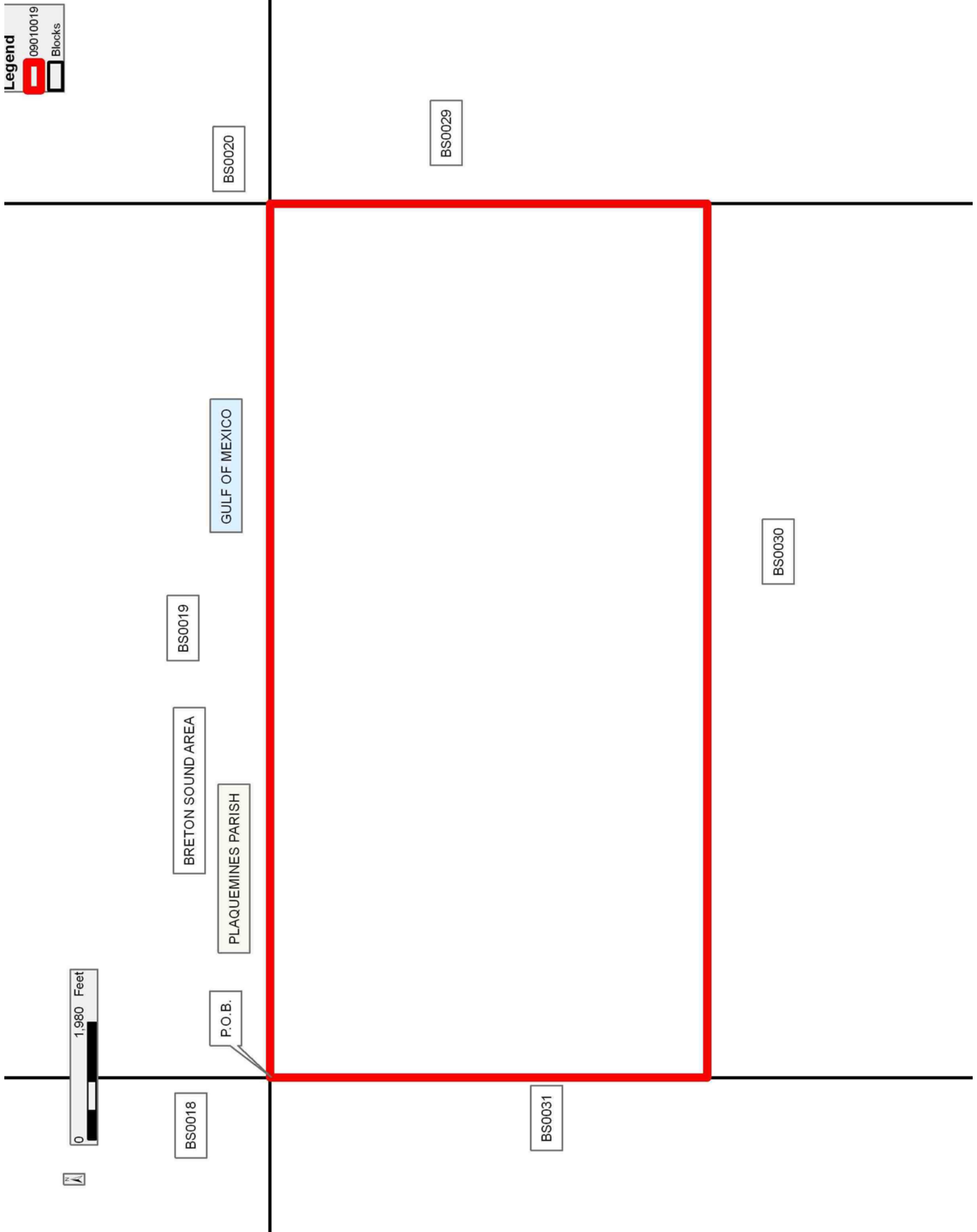
NOTE: It appears, according to our records, that a portion of this Tract is located within the restrictive safety fairway area as set out by the Corps of Engineers, U.S. Army and/or the restrictive anchorage area as set out by the U.S. Coast Guard.

NOTE: The Department of Wildlife and Fisheries has designated certain areas in the coastal waters of the State of Louisiana as Oyster Seed Bed Areas. The exact location of those Seed Bed Areas must be obtained from the Department of Wildlife and Fisheries and any work done under a mineral lease from the State of Louisiana may necessarily be conducted in conformity with the rules and regulations promulgated by the said Department of Wildlife and Fisheries for Oyster Seed Bed Areas.

Applicant: ROBERT A. SCHROEDER, INC.

Bidder	Cash Payment	Price/Acre	Rental	Oil	Gas	Other

Legend  
09010019  
Blocks



**TRACT 40763 - Portion of Block 31, Breton Sound Area, Plaquemines Parish, Louisiana**

All of the lands now or formerly constituting the beds and bottoms of all water bodies of every nature and description as to which title is vested in the State of Louisiana, together with all islands arising therein and other lands formed by accretion or by reliction, where allowed by law, excepting tax adjudicated lands, and not presently under mineral lease on January 14, 2009, situated in Plaquemines Parish, Louisiana, and more particularly described as follows: Beginning at a point having Coordinates of X = 2,664,850.00 and Y = 337,080.00, said point being the northeast corner of Block 31, Breton Sound Area; thence South 7,375.00 feet on and along the east line of said Block 31, Breton Sound Area, to a point having Coordinates of X = 2,664,850.00 and Y = 329,705.00; thence West 14,750.00 feet to a point having Coordinates of X = 2,650,100.00 and Y = 329,705.00, said point being on the west line of said Block 31, Breton Sound Area; thence North 7,375.00 feet on and along said west line of said Block 31, Breton Sound Area, to a point having Coordinates of X = 2,650,100.00 and Y = 337,080.00, said point being the northwest corner of said Block 31, Breton Sound Area; thence East 14,750.00 feet on and along the north line of said Block 31, Breton Sound Area, to the point of beginning, containing **2,497.27 acres**, all as more particularly outlined on a plat on file in the Office of Mineral Resources, Department of Natural Resources. All bearings, distances and coordinates are based on Louisiana Coordinate System of 1927, (North or South Zone), where applicable.

NOTE: The above description of the Tract nominated for lease has been provided and corrected, where required, exclusively by the nomination party. Any mineral lease selected from this Tract and awarded by the Louisiana State Mineral Board shall be without warranty of any kind, either express, implied, or statutory, including, but not limited to, the implied warranties of merchantability and fitness for a particular purpose. Should the mineral lease awarded by the Louisiana State Mineral Board be subsequently modified, cancelled or abrogated due to the existence of conflicting leases, operating agreements, private claims or other future obligations or conditions which may affect all or any portion of the leased Tract, it shall not relieve the Lessee of the obligation to pay any bonus due thereon to the Louisiana State Mineral Board, nor shall the Louisiana State Mineral Board be obligated to refund any consideration paid by the Lessor prior to such modification, cancellation, or abrogation, including, but not limited to, bonuses, rentals and royalties.

NOTE: The State of Louisiana does hereby reserve, and this lease shall be subject to, the imprescriptible right of surface use in the nature of a servitude in favor of the Department of Natural Resources, including its Offices and Commissions, for the sole purpose of implementing, constructing, servicing and maintaining approved coastal zone management and/or restoration projects. Utilization of any and all rights derived under this lease by the mineral lessee, its agents, successors or assigns, shall not interfere with nor hinder the reasonable surface use by the

Department of Natural Resources, its Offices or Commissions, as herein above reserved.

NOTE: It appears, according to our records, that a portion of this Tract is located within the restrictive safety fairway area as set out by the Corps of Engineers, U.S. Army and/or the restrictive anchorage area as set out by the U.S. Coast Guard.

NOTE: The Department of Wildlife and Fisheries has designated certain areas in the coastal waters of the State of Louisiana as Oyster Seed Bed Areas. The exact location of those Seed Bed Areas must be obtained from the Department of Wildlife and Fisheries and any work done under a mineral lease from the State of Louisiana may necessarily be conducted in conformity with the rules and regulations promulgated by the said Department of Wildlife and Fisheries for Oyster Seed Bed Areas.

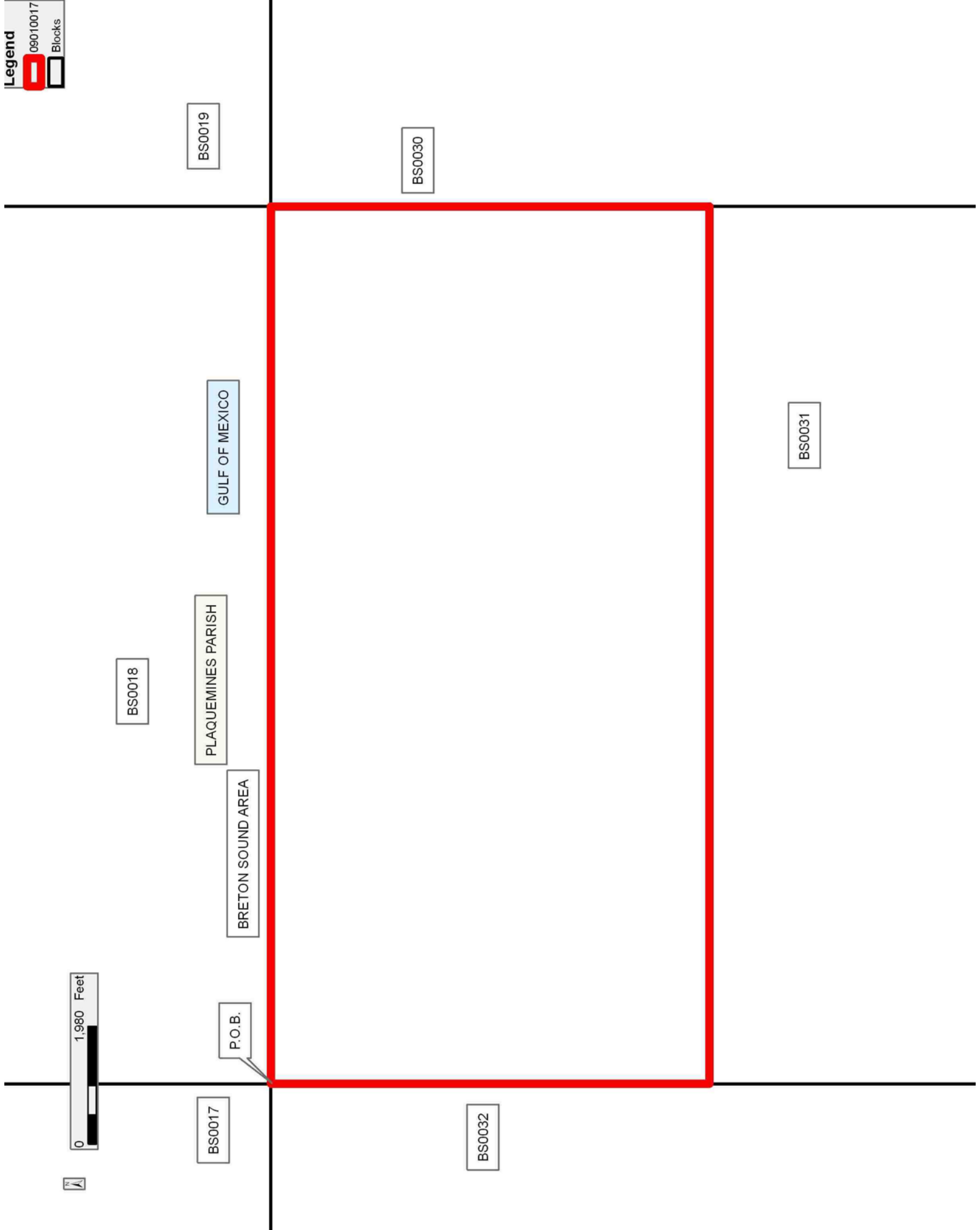
Applicant: ROBERT A. SCHROEDER, INC.

Bidder	Cash Payment	Price/Acre	Rental	Oil	Gas	Other

**Legend**

09010017

Blocks



**TRACT 40764 - Portion of Block 31, Breton Sound Area, Plaquemines Parish, Louisiana**

All of the lands now or formerly constituting the beds and bottoms of all water bodies of every nature and description as to which title is vested in the State of Louisiana, together with all islands arising therein and other lands formed by accretion or by reliction, where allowed by law, excepting tax adjudicated lands, and not presently under mineral lease on January 14, 2009, situated in Plaquemines Parish, Louisiana, and more particularly described as follows: Beginning at the Southeast corner of Block 31, Breton Sound Area having Coordinates of X = 2,664,850.00 and Y = 322,330.00; thence West 3,375.00 feet along the South line of said Block 31 to the Southeast corner of State Lease No. 4865 to a point having Coordinates of X = 2,661,475.00 and Y = 322,330.00; thence along the boundary of said State Lease No. 4865 the following courses: North 4,000.00 feet to its Northeast corner having Coordinates of X = 2,661,475.00 and Y = 326,330.00 and West 4,000.00 feet to its Northwest corner, also being the Northeast corner of State Lease No. 4407, as amended, having Coordinates of X = 2,657,475.00 and Y = 326,330.00; thence West 7,375.00 feet along the Northern boundary of said State Lease No. 4407 to its Northwest corner, also being a point on the West line of said Block 31 having Coordinates of X = 2,650,100.00 and Y = 326,330.00; thence North 3,375.00 feet along the West line of said Block 31 to a point having Coordinates of X = 2,650,100.00 and Y = 329,705.00; thence East 14,750.00 feet to a point on the East line of said Block 31 having Coordinates of X = 2,664,850.00 and Y = 329,705.00; thence South 7,375.00 feet along the East line of said Block 31 to the point of beginning, containing **1,452.74 acres**, all as more particularly outlined on a plat on file in the Office of Mineral Resources, Department of Natural Resources. All bearings, distances and coordinates are based on Louisiana Coordinate System of 1927, (North or South Zone), where applicable.

NOTE: The above description of the Tract nominated for lease has been provided and corrected, where required, exclusively by the nomination party. Any mineral lease selected from this Tract and awarded by the Louisiana State Mineral Board shall be without warranty of any kind, either express, implied, or statutory, including, but not limited to, the implied warranties of merchantability and fitness for a particular purpose. Should the mineral lease awarded by the Louisiana State Mineral Board be subsequently modified, cancelled or abrogated due to the existence of conflicting leases, operating agreements, private claims or other future obligations or conditions which may affect all or any portion of the leased Tract, it shall not relieve the Lessee of the obligation to pay any bonus due thereon to the Louisiana State Mineral Board, nor shall the Louisiana State Mineral Board be obligated to refund any consideration paid by the Lessor prior to such modification, cancellation, or abrogation, including, but not limited to, bonuses, rentals and royalties.

NOTE: The State of Louisiana does hereby reserve, and this lease shall be subject to, the imprescriptible right of surface use in the nature of a

servitude in favor of the Department of Natural Resources, including its Offices and Commissions, for the sole purpose of implementing, constructing, servicing and maintaining approved coastal zone management and/or restoration projects. Utilization of any and all rights derived under this lease by the mineral lessee, its agents, successors or assigns, shall not interfere with nor hinder the reasonable surface use by the Department of Natural Resources, its Offices or Commissions, as herein above reserved.

NOTE: It appears, according to our records, that a portion of this Tract is located within the restrictive safety fairway area as set out by the Corps of Engineers, U.S. Army and/or the restrictive anchorage area as set out by the U.S. Coast Guard.

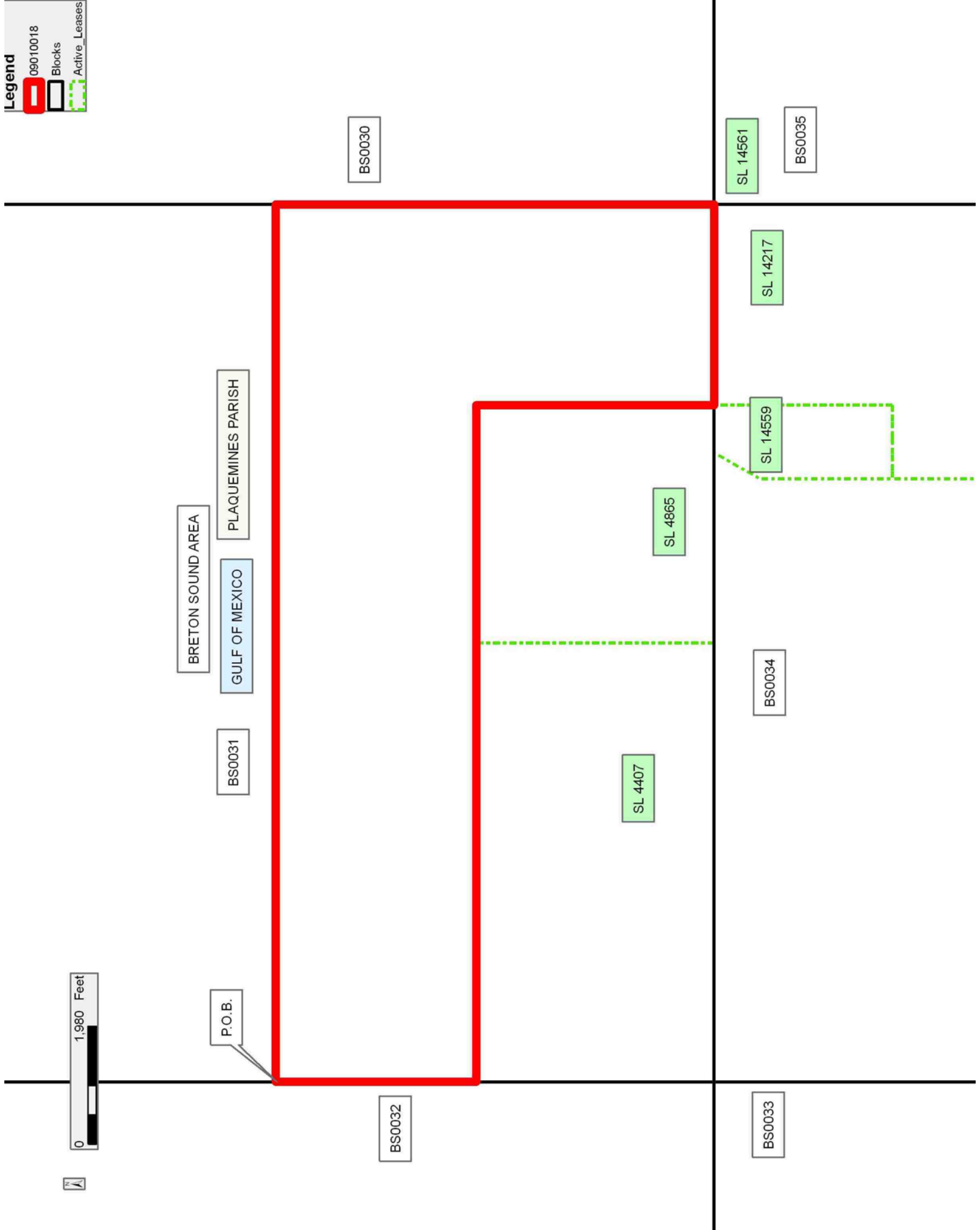
NOTE: The Department of Wildlife and Fisheries has designated certain areas in the coastal waters of the State of Louisiana as Oyster Seed Bed Areas. The exact location of those Seed Bed Areas must be obtained from the Department of Wildlife and Fisheries and any work done under a mineral lease from the State of Louisiana may necessarily be conducted in conformity with the rules and regulations promulgated by the said Department of Wildlife and Fisheries for Oyster Seed Bed Areas.

Applicant: ROBERT A. SCHROEDER, INC.

Bidder	Cash Payment	Price/Acre	Rental	Oil	Gas	Other

**Legend**

- 09010018
- Blocks
- Active\_Leases





**TRACT 40765 - Portion of Block 30, Breton Sound Area, Plaquemines Parish, Louisiana**

All of the lands now or formerly constituting the beds and bottoms of all water bodies of every nature and description as to which title is vested in the State of Louisiana, together with all islands arising therein and other lands formed by accretion or by reliction, where allowed by law, excepting tax adjudicated lands, and not presently under mineral lease on January 14, 2009, situated in Plaquemines Parish, Louisiana, and more particularly described as follows: Beginning at a point having Coordinates of X = 2,664,850.00 and Y = 322,330.00, said point being the Southwest corner of Block 30, Breton Sound Area; thence North 7,375.00 feet on and along the West line of said Block 30, Breton Sound Area, to a point having Coordinates of X = 2,664,850.00 and Y = 329,705.00; thence East 5,090.00 feet to a point having Coordinates of X = 2,669,940.00 and Y = 329,705.00; thence South 7,375.00 feet to a point having Coordinates of X = 2,669,940.00 and Y = 322,330.00, said point being on the South line of said Block 30, Breton Sound Area; thence West 5,090.00 feet on and along the South line of said Block 30, Breton Sound Area, to the point of beginning, containing **861.77 acres**, all as more particularly outlined on a plat on file in the Office of Mineral Resources, Department of Natural Resources. All bearings, distances and coordinates are based on Louisiana Coordinate System of 1927, (North or South Zone), where applicable.

NOTE: The above description of the Tract nominated for lease has been provided and corrected, where required, exclusively by the nomination party. Any mineral lease selected from this Tract and awarded by the Louisiana State Mineral Board shall be without warranty of any kind, either express, implied, or statutory, including, but not limited to, the implied warranties of merchantability and fitness for a particular purpose. Should the mineral lease awarded by the Louisiana State Mineral Board be subsequently modified, cancelled or abrogated due to the existence of conflicting leases, operating agreements, private claims or other future obligations or conditions which may affect all or any portion of the leased Tract, it shall not relieve the Lessee of the obligation to pay any bonus due thereon to the Louisiana State Mineral Board, nor shall the Louisiana State Mineral Board be obligated to refund any consideration paid by the Lessor prior to such modification, cancellation, or abrogation, including, but not limited to, bonuses, rentals and royalties.

NOTE: The State of Louisiana does hereby reserve, and this lease shall be subject to, the imprescriptible right of surface use in the nature of a servitude in favor of the Department of Natural Resources, including its Offices and Commissions, for the sole purpose of implementing, constructing, servicing and maintaining approved coastal zone management and/or restoration projects. Utilization of any and all rights derived under this lease by the mineral lessee, its agents, successors or assigns, shall not interfere with nor hinder the reasonable surface use by the Department of Natural Resources, its Offices or Commissions, as herein above reserved.




NOTE: It appears, according to our records, that a portion of this Tract is located within the restrictive safety fairway area as set out by the Corps of Engineers, U.S. Army and/or the restrictive anchorage area as set out by the U.S. Coast Guard.

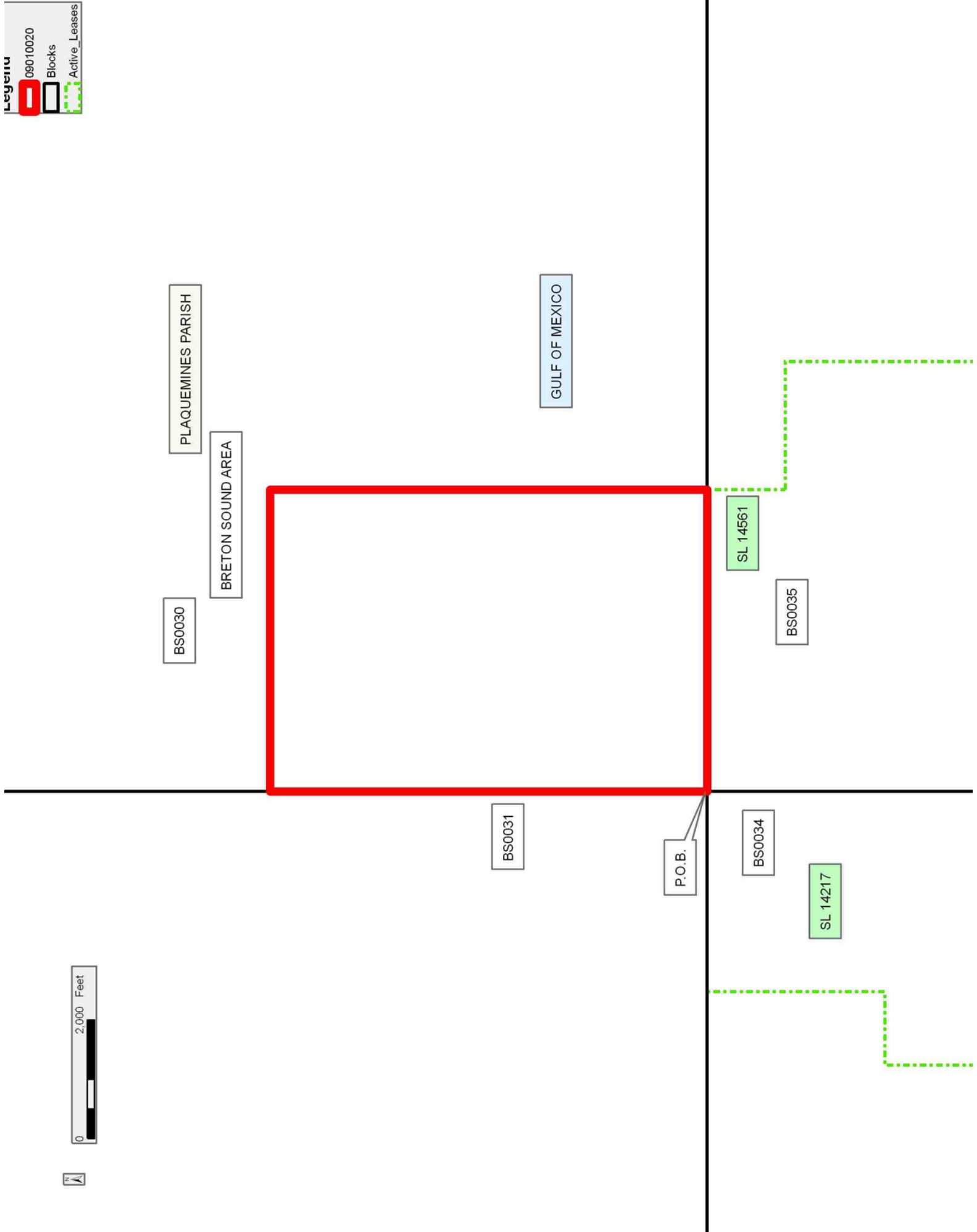
NOTE: The Department of Wildlife and Fisheries has designated certain areas in the coastal waters of the State of Louisiana as Oyster Seed Bed Areas. The exact location of those Seed Bed Areas must be obtained from the Department of Wildlife and Fisheries and any work done under a mineral lease from the State of Louisiana may necessarily be conducted in conformity with the rules and regulations promulgated by the said Department of Wildlife and Fisheries for Oyster Seed Bed Areas.

Applicant: ROBERT A. SCHROEDER, INC.

Bidder	Cash Payment	Price/Acre	Rental	Oil	Gas	Other

**Legend**

-  09010020
-  Blocks
-  Active\_Leases



**TRACT 40766 - Portion of Block 26, Main Pass Area, Revised, Plaquemines Parish, Louisiana**

All of the lands now or formerly constituting the beds and bottoms of all water bodies of every nature and description as to which title is vested in the State of Louisiana, together with all islands arising therein and other lands formed by accretion or by reliction, where allowed by law, excepting tax adjudicated lands, and not presently under mineral lease on January 14, 2009, situated in Plaquemines Parish, Louisiana, and more particularly described as follows: Beginning at a point having Coordinates of X = 2,635,350.00 and Y = 322,330.00, said point being the northeast corner of Block 26, Main Pass Area, Revised; thence South 3,100.00 feet on and along the east line of said Block 26, Main Pass Area, Revised, to a point having Coordinates of X = 2,635,350.00 and Y = 319,230.00, said point being on the northern boundary of State of Louisiana State Lease No. 18663; thence on and along the northern, western, southern and eastern boundaries of said State of Louisiana State Lease No. 18663 the following courses and distances, to wit: South 35 degrees 40 minutes 35 seconds West 2,400.52 feet to a point having Coordinates of X = 2,633,950.00 and Y = 317,280.01; South 15 degrees 56 minutes 43 seconds West 1,092.02 feet to a point having Coordinates of X = 2,633,650.00 and Y = 316,230.00; South 56 degrees 18 minutes 36 seconds East 1,261.94 feet to a point having Coordinates of X = 2,634,700.00 and Y = 315,530.00; and North 50 degrees 07 minutes 57 seconds East 846.87 feet to a point having Coordinates of X = 2,635,350.00 and Y = 316,072.86, said point being on said east line of said Block 26, Main Pass Area, Revised; thence South 225.86 feet on and along said east line of said Block 26, Main Pass Area, Revised, to a point having Coordinates of X = 2,635,350.00 and Y = 315,847.00; thence continue South 892.00 feet on and along said east line of said Block 26, Main Pass Area, Revised, to a point having Coordinates of X = 2,635,350.00 and Y = 314,955.00; thence West 14,750.00 feet to a point having Coordinates of X = 2,620,600.00 and Y = 314,955.00, said point being on the west line of said Block 26, Main Pass Area, Revised; thence North 7,375.00 feet on and along said west line of said Block 26, Main Pass Area, Revised, to a point having Coordinates of X = 2,620,600.00 and Y = 322,330.00 said point being the northwest corner of said Block 26, Main Pass Area, Revised; thence West 1,758.78 feet on and along the north line of said Block 26, Main Pass Area, Revised, to a point having Coordinates of X = 2,622,358.78 and Y = 322,330.00 said point being the northwest corner of State of Louisiana State Lease No. 19249; thence on and along the western, southern and eastern boundaries of said State of Louisiana State Lease No. 19249 the following courses and distances, to wit: South 07 degrees 02 minutes 43 seconds West 3,544.76 feet to a point having Coordinates of X = 2,621,924.00 and Y = 318,812.00; South 83 degrees 35 minutes 30 seconds East 4,264.65 feet to a point having Coordinates of X = 2,626,162.00 and Y = 318,336.00; and North 16 degrees 01 minutes 53 seconds West 4,155.61 feet to a point having Coordinates of X = 2,625,014.36 and Y = 322,330.00, said point being the northeast corner of said State of Louisiana State Lease No. 19249, said point also being on said north line of said Block 26, Main Pass Area, Revised; thence East 10,335.64 feet on and along said

north line of said Block 26, Main Pass Area, Revised, to the point of beginning, **LESS AND EXCEPT** that portion thereof situated within the boundaries of State of Louisiana State Lease No. 16935 and more particularly described as follows, to wit: Beginning at a point on the above tract having Coordinates of X = 2,635,350.00 and Y = 322,330.00, said point being the northeast corner of Block 26, Main Pass Area, Revised; thence South 40 degrees 37 minutes 21 seconds West 3,501.91 feet to a point within Block 26, Main Pass Area, Revised, having Coordinates of X = 2,633,070.00 and Y = 319,672.00, said point being the point of beginning for State Lease No. 16935; thence West 2,187.00 feet a point having Coordinates of X = 2,630,883.00 and Y = 319,672.00; thence North 2,148.00 feet a point having Coordinates of X = 2,630,883.00 and Y = 321,820.00; thence East 2,187.00 feet a point having Coordinates of X = 2,633,070.00 and Y = 321,820.00; thence South 2,148.00 feet to the point of beginning. The above described tract contains **2,010.64 acres**

, all as more particularly outlined on a plat on file in the Office of Mineral Resources, Department of Natural Resources. All bearings, distances and coordinates are based on Louisiana Coordinate System of 1927, (North or South Zone), where applicable.

NOTE: The above description of the Tract nominated for lease has been provided and corrected, where required, exclusively by the nomination party. Any mineral lease selected from this Tract and awarded by the Louisiana State Mineral Board shall be without warranty of any kind, either express, implied, or statutory, including, but not limited to, the implied warranties of merchantability and fitness for a particular purpose. Should the mineral lease awarded by the Louisiana State Mineral Board be subsequently modified, cancelled or abrogated due to the existence of conflicting leases, operating agreements, private claims or other future obligations or conditions which may affect all or any portion of the leased Tract, it shall not relieve the Lessee of the obligation to pay any bonus due thereon to the Louisiana State Mineral Board, nor shall the Louisiana State Mineral Board be obligated to refund any consideration paid by the Lessor prior to such modification, cancellation, or abrogation, including, but not limited to, bonuses, rentals and royalties.




NOTE: The State of Louisiana does hereby reserve, and this lease shall be subject to, the imprescriptible right of surface use in the nature of a servitude in favor of the Department of Natural Resources, including its Offices and Commissions, for the sole purpose of implementing, constructing, servicing and maintaining approved coastal zone management and/or restoration projects. Utilization of any and all rights derived under this lease by the mineral lessee, its agents, successors or assigns, shall not interfere with nor hinder the reasonable surface use by the Department of Natural Resources, its Offices or Commissions, as herein above reserved.

NOTE: The Department of Wildlife and Fisheries has designated certain areas in the coastal waters of the State of Louisiana as Oyster Seed Bed Areas. The exact location of those Seed Bed Areas must be obtained from the Department of Wildlife and Fisheries and any work done under a mineral lease from the State of Louisiana may necessarily be conducted in conformity with the rules and regulations promulgated by the said Department of Wildlife and Fisheries for Oyster Seed Bed Areas.

Applicant: ROBERT A. SCHROEDER, INC.

Bidder	Cash Payment	Price/Acre	Rental	Oil	Gas	Other

**Legend**

-  09010013
-  Blocks
-  Active\_Leases

