

TRACT 40747 - Cameron Parish, Louisiana

All of the lands now or formerly constituting the beds and bottoms of all water bodies of every nature and description as to which title is vested in the State of Louisiana, together with all islands arising therein and other lands formed by accretion or by reliction, where allowed by law, excepting tax adjudicated lands, and not presently under mineral lease on January 14, 2009, situated in Cameron Parish, Louisiana, and more particularly described as follows: Beginning at a point having Coordinates of X = 1,464,132.96 and Y = 400,696.00; thence East 17,734.65 feet to a point having Coordinates of X = 1,481,867.60 and Y = 400,696.00; thence South approximately 17,615.46 feet to a point on the Louisiana Coastline, as decreed by the Supreme Court of the United States, as determined by a Special Master appointed therein, in litigation styled *United States v. State of Louisiana et al No. 9 Original*, in 1975, also being a point having Coordinates of X = 1,481,867.60 and Y = 383,080.55; thence along said coastline the following courses: Northwesterly on a straight line to a point having Coordinates of X = 1,479,730 and Y = 384,090, Northwesterly on a straight line to a point having Coordinates of X = 1,471,240 and Y = 387,390, Northwesterly on a straight line to a point having Coordinates of X = 1,467,685.00 and Y = 388,820.00, and Northwesterly on a straight line to a point having Coordinates of X = 1,463,387.60 and Y = 390,266.29; thence North 7,710.77 feet to a point having Coordinates of X = 1,463,387.60 and Y = 397,977.07; thence East 745.36 feet to a point having Coordinates of X = 1,464,132.96 and Y = 397,977.07; thence North 2,718.94 to the point of beginning, **LESS AND EXCEPT** that portion, if any, of State Lease No. 1170, as amended, which may lie within the above described tract, containing approximately **1,256 acres**, all as more particularly outlined on a plat on file in the Office of Mineral Resources, Department of Natural Resources. All bearings, distances and coordinates are based on Louisiana Coordinate System of 1927, (North or South Zone), where applicable.

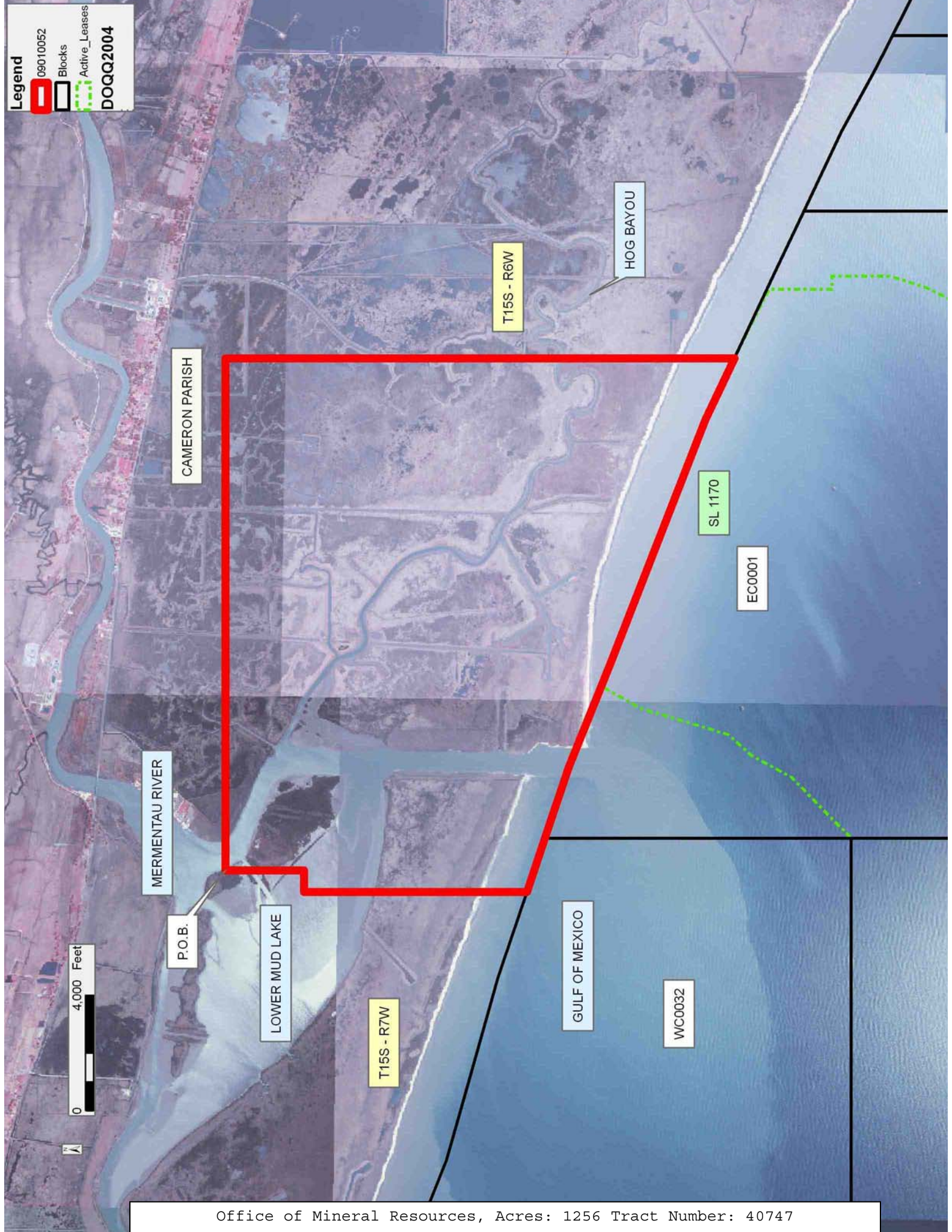
NOTE: The above description of the Tract nominated for lease has been provided and corrected, where required, exclusively by the nomination party. Any mineral lease selected from this Tract and awarded by the Louisiana State Mineral Board shall be without warranty of any kind, either express, implied, or statutory, including, but not limited to, the implied warranties of merchantability and fitness for a particular purpose. Should the mineral lease awarded by the Louisiana State Mineral Board be subsequently modified, cancelled or abrogated due to the existence of conflicting leases, operating agreements, private claims or other future obligations or conditions which may affect all or any portion of the leased Tract, it shall not relieve the Lessee of the obligation to pay any bonus due thereon to the Louisiana State Mineral Board, nor shall the Louisiana State Mineral Board be obligated to refund any consideration paid by the Lessor prior to such modification, cancellation, or abrogation, including, but not limited to, bonuses, rentals and royalties.

NOTE: The State of Louisiana does hereby reserve, and this lease shall be subject to, the imprescriptible right of surface use in the nature of a

servitude in favor of the Department of Natural Resources, including its Offices and Commissions, for the sole purpose of implementing, constructing, servicing and maintaining approved coastal zone management and/or restoration projects. Utilization of any and all rights derived under this lease by the mineral lessee, its agents, successors or assigns, shall not interfere with nor hinder the reasonable surface use by the Department of Natural Resources, its Offices or Commissions, as herein above reserved.

Applicant: CYPRESS ENERGY CORPORATION

Bidder	Cash Payment	Price/ Acre	Rental	Oil	Gas	Other



Legend

09010052

Blocks

Active_Leases

DOQQ2004

CAMERON PARISH

MERMENTAU RIVER

P.O.B.

LOWER MUD LAKE

T15S - R7W

T15S - R6W

HOG BAYOU

GULF OF MEXICO

SL 1170

EC0001

WC0032

TRACT 40748 - Vermilion Parish, Louisiana

All of the lands now or formerly constituting the beds and bottoms of all water bodies of every nature and description as to which title is vested in the State of Louisiana, together with all islands arising therein and other lands formed by accretion or by reliction, where allowed by law, excepting tax adjudicated lands, and a portion of the bed and bottom of White Lake created by shoreline erosion since November of 1942, and therefore not in existence at the time Special Act No. 92 of the 1942 Regular Session of the Louisiana Legislature was enacted, claimed as one hundred percent (100%) owned by the State of Louisiana, not presently under mineral lease by the State of Louisiana on January 14, 2009 and being more particularly described as follows: Beginning at a point having Coordinates of X = 1,608,199.20 and Y = 377,864.00; thence West 14,533.74 feet to a point having Coordinates of X = 1,593,665.46 and Y = 377,864.00; thence North 17,723.12 feet to a point having Coordinates of X = 1,593,665.46 and Y = 395,587.12; thence East approximately 2,430 feet to a point of intersection with the 1942 Shoreline of White Lake having a Coordinate of Y = 395,587.12; thence Southerly and Southeasterly along the meanders of said 1942 Shoreline of White Lake to a point of intersection with a North-South line having a Coordinate X = 1,608,199.20; thence South approximately 5,491 feet along said line to the point of beginning, containing approximately **473 acres**, all as more particularly outlined on a plat on file in the Office of Mineral Resources, Department of Natural Resources. All bearings, distances and coordinates are based on Louisiana Coordinate System of 1927, (South Zone).

NOTE: Any lease on this Tract shall contain the following language, to wit: "Should a title dispute arise regarding this leased acreage and litigation ensue, lessee herein agrees to pay the State as billed by the State, any and all legal costs incurred by the State of Louisiana in defending its title to said leased acreage up to a maximum aggregate amount of one hundred fifty thousand and no/100 dollars (\$150,000.00) for all leases in the same area by the same lessee."

NOTE: The above description of the Tract nominated for lease has been provided and corrected, where required, exclusively by the nomination party. Any mineral lease selected from this Tract and awarded by the Louisiana State Mineral Board shall be without warranty of any kind, either express, implied, or statutory, including, but not limited to, the implied warranties of merchantability and fitness for a particular purpose. Should the mineral lease awarded by the Louisiana State Mineral Board be subsequently modified, cancelled or abrogated due to the existence of conflicting leases, operating agreements, private claims or other future obligations or conditions which may affect all or any portion of the leased Tract, it shall not relieve the Lessee of the obligation to pay any bonus due thereon to the Louisiana State Mineral Board, nor shall the Louisiana State Mineral Board be obligated to refund any consideration paid by the Lessor prior to such modification, cancellation, or abrogation, including, but not limited to, bonuses, rentals and royalties.

NOTE: The State of Louisiana does hereby reserve, and this lease shall be subject to, the imprescriptible right of surface use in the nature of a servitude in favor of the Department of Natural Resources, including its Offices and Commissions, for the sole purpose of implementing, constructing, servicing and maintaining approved coastal zone management and/or restoration projects. Utilization of any and all rights derived under this lease by the mineral lessee, its agents, successors or assigns, shall not interfere with nor hinder the reasonable surface use by the Department of Natural Resources, its Offices or Commissions, as herein above reserved.

Applicant: JOSEPH M. BENOIT

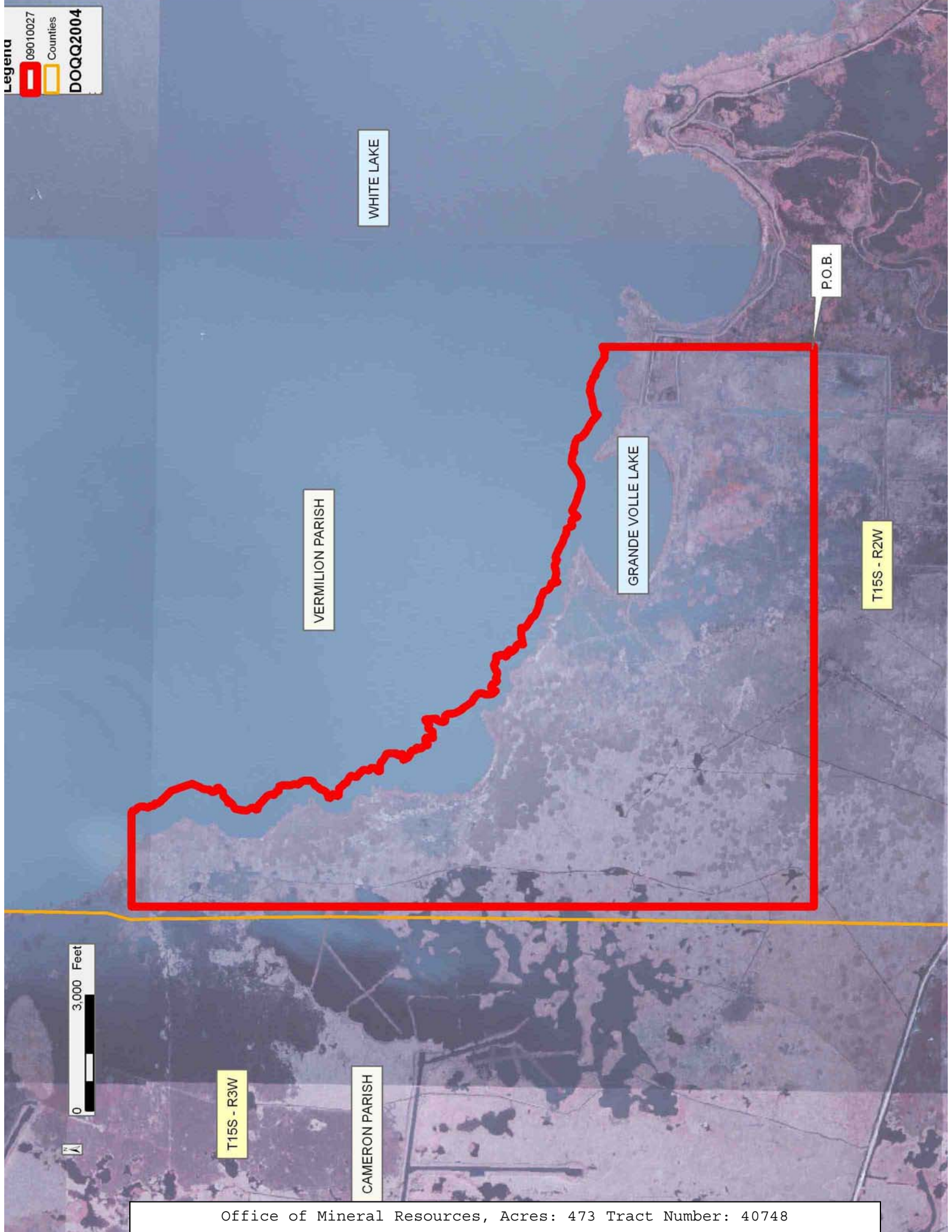
Bidder	Cash Payment	Price/ Acre	Rental	Oil	Gas	Other

Legend

09010027

Counties

DOQQ2004



TRACT 40749 - St. Mary Parish, Louisiana

All of the lands now or formerly constituting the beds and bottoms of all water bodies of every nature and description as to which title is vested in the State of Louisiana, together with all islands arising therein and other lands formed by accretion or by reliction, where allowed by law, excepting tax adjudicated lands, and not presently under mineral lease on January 14, 2009, situated in St. Mary Parish, Louisiana, and more particularly described as follows: Beginning at a point having Coordinates of X = 1,897,585.00 and Y = 391,191.00; thence East 7,924.00 feet to a point having Coordinates of X = 1,905,509.00 and Y = 391,191.00; thence South 12,000.00 feet to a point having Coordinates of X = 1,905,509.00 and Y = 379,191.00; thence West 7,924.00 feet to a point having Coordinates of X = 1,897,585.00 and Y = 379,191.00; thence North 12,000.00 feet to the point of beginning, containing approximately **2,182.92 acres**, all as more particularly outlined on a plat on file in the Office of Mineral Resources, Department of Natural Resources. All bearings, distances and coordinates are based on Louisiana Coordinate System of 1927, (North or South Zone), where applicable.

NOTE: The above description of the Tract nominated for lease has been provided and corrected, where required, exclusively by the nomination party. Any mineral lease selected from this Tract and awarded by the Louisiana State Mineral Board shall be without warranty of any kind, either express, implied, or statutory, including, but not limited to, the implied warranties of merchantability and fitness for a particular purpose. Should the mineral lease awarded by the Louisiana State Mineral Board be subsequently modified, cancelled or abrogated due to the existence of conflicting leases, operating agreements, private claims or other future obligations or conditions which may affect all or any portion of the leased Tract, it shall not relieve the Lessee of the obligation to pay any bonus due thereon to the Louisiana State Mineral Board, nor shall the Louisiana State Mineral Board be obligated to refund any consideration paid by the Lessor prior to such modification, cancellation, or abrogation, including, but not limited to, bonuses, rentals and royalties.

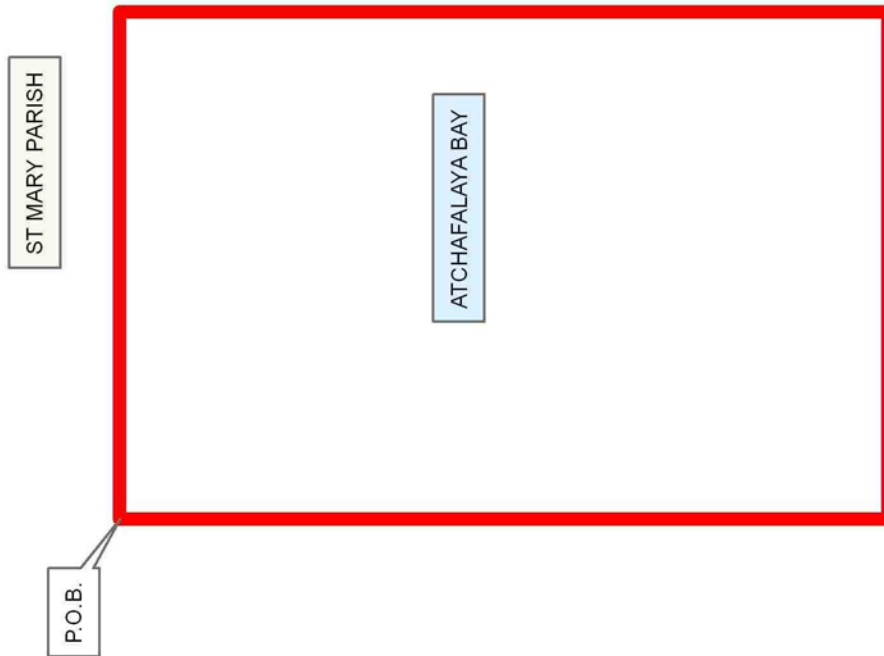
NOTE: The State of Louisiana does hereby reserve, and this lease shall be subject to, the imprescriptible right of surface use in the nature of a servitude in favor of the Department of Natural Resources, including its Offices and Commissions, for the sole purpose of implementing, constructing, servicing and maintaining approved coastal zone management and/or restoration projects. Utilization of any and all rights derived under this lease by the mineral lessee, its agents, successors or assigns, shall not interfere with nor hinder the reasonable surface use by the Department of Natural Resources, its Offices or Commissions, as herein above reserved.

NOTE: The Department of Wildlife and Fisheries has designated certain areas in the coastal waters of the State of Louisiana as Oyster Seed Bed Areas. The exact location of those Seed Bed Areas must be obtained from

the Department of Wildlife and Fisheries and any work done under a mineral lease from the State of Louisiana may necessarily be conducted in conformity with the rules and regulations promulgated by the said Department of Wildlife and Fisheries for Oyster Seed Bed Areas.

Applicant: PATRICK L. DONOHUE PETROLEUM PROPERTIES, INC.

Bidder	Cash Payment	Price/ Acre	Rental	Oil	Gas	Other



TRACT 40750 - St. Mary Parish, Louisiana

All of the lands now or formerly constituting the beds and bottoms of all water bodies of every nature and description as to which title is vested in the State of Louisiana, together with all islands arising therein and other lands formed by accretion or by reliction, where allowed by law, excepting tax adjudicated lands, and not presently under mineral lease on January 14, 2009, situated in St. Mary Parish, Louisiana, and more particularly described as follows: Beginning at a point having Coordinates of X = 1,905,509.00 and Y = 391,191.00; thence East 7,924.00 feet to a point having Coordinates of X = 1,913,433.00 and Y = 391,191.00; thence South 12,000.00 feet to a point having Coordinates of X = 1,913,433.00 and Y = 379,191.00; thence West 7,924.00 feet to a point having Coordinates of X = 1,905,509.00 and Y = 379,191.00; thence North 12,000.00 feet to the point of beginning, containing approximately **1,173 acres**, all as more particularly outlined on a plat on file in the Office of Mineral Resources, Department of Natural Resources. All bearings, distances and coordinates are based on Louisiana Coordinate System of 1927, (North or South Zone), where applicable.

NOTE: The above description of the Tract nominated for lease has been provided and corrected, where required, exclusively by the nomination party. Any mineral lease selected from this Tract and awarded by the Louisiana State Mineral Board shall be without warranty of any kind, either express, implied, or statutory, including, but not limited to, the implied warranties of merchantability and fitness for a particular purpose. Should the mineral lease awarded by the Louisiana State Mineral Board be subsequently modified, cancelled or abrogated due to the existence of conflicting leases, operating agreements, private claims or other future obligations or conditions which may affect all or any portion of the leased Tract, it shall not relieve the Lessee of the obligation to pay any bonus due thereon to the Louisiana State Mineral Board, nor shall the Louisiana State Mineral Board be obligated to refund any consideration paid by the Lessor prior to such modification, cancellation, or abrogation, including, but not limited to, bonuses, rentals and royalties.

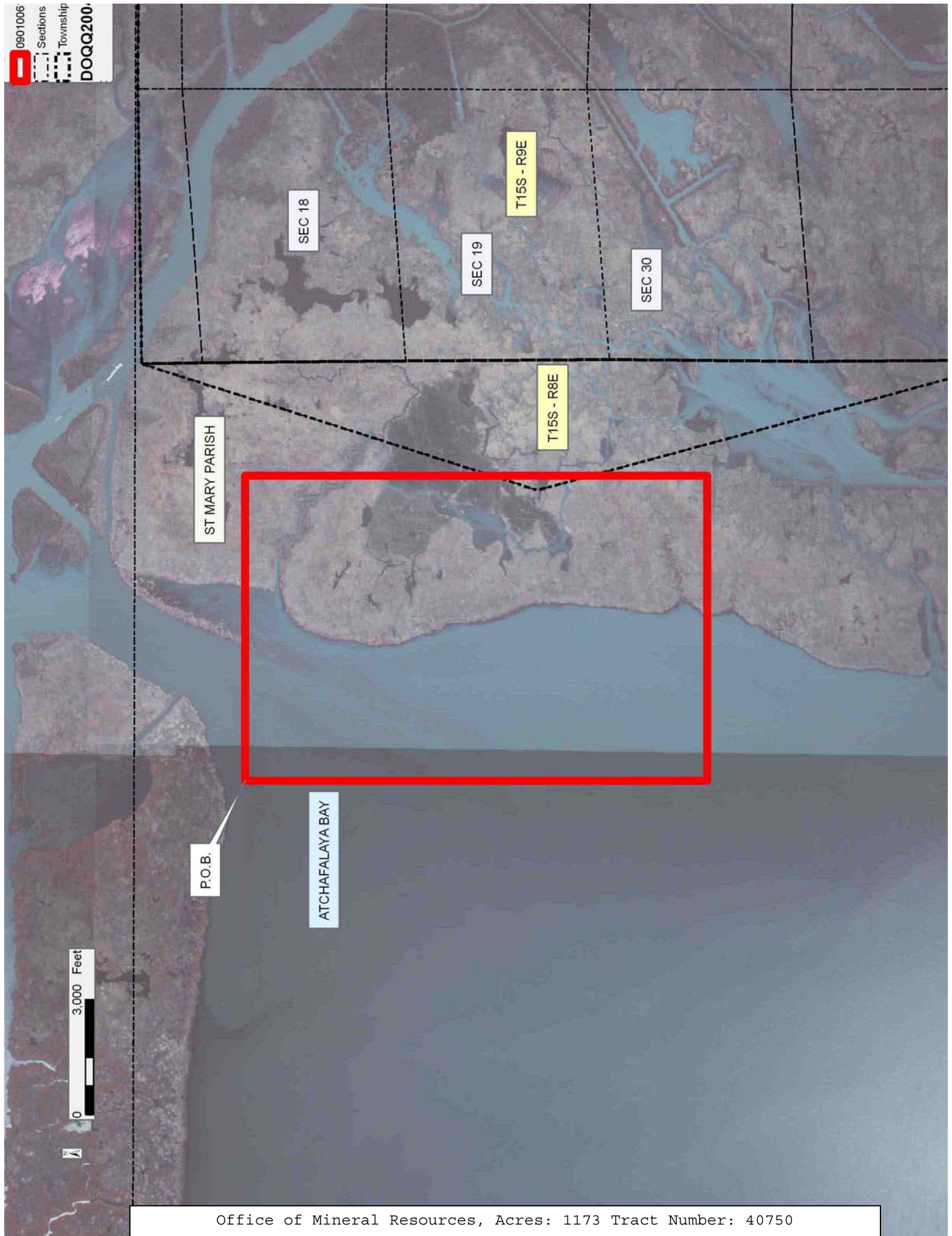
NOTE: The State of Louisiana does hereby reserve, and this lease shall be subject to, the imprescriptible right of surface use in the nature of a servitude in favor of the Department of Natural Resources, including its Offices and Commissions, for the sole purpose of implementing, constructing, servicing and maintaining approved coastal zone management and/or restoration projects. Utilization of any and all rights derived under this lease by the mineral lessee, its agents, successors or assigns, shall not interfere with nor hinder the reasonable surface use by the Department of Natural Resources, its Offices or Commissions, as herein above reserved.

NOTE: The Department of Wildlife and Fisheries has designated certain areas in the coastal waters of the State of Louisiana as Oyster Seed Bed Areas. The exact location of those Seed Bed Areas must be obtained from

the Department of Wildlife and Fisheries and any work done under a mineral lease from the State of Louisiana may necessarily be conducted in conformity with the rules and regulations promulgated by the said Department of Wildlife and Fisheries for Oyster Seed Bed Areas.

Applicant: PATRICK L. DONOHUE PETROLEUM PROPERTIES, INC.

Bidder	Cash Payment	Price/ Acre	Rental	Oil	Gas	Other



TRACT 40751 - St. Mary Parish, Louisiana

All of the lands now or formerly constituting the beds and bottoms of all water bodies of every nature and description as to which title is vested in the State of Louisiana, together with all islands arising therein and other lands formed by accretion or by reliction, where allowed by law, excepting tax adjudicated lands, and not presently under mineral lease on January 14, 2009, situated in St. Mary Parish, Louisiana, and more particularly described as follows: Beginning at a point having Coordinates of X = 1,889,661.00 and Y = 371,154.00; thence North approximately 5,240 feet to a point on the South boundary of State Lease No. 340, as amended, having a Coordinate of X = 1,889,661.00; thence along the boundary of said State Lease No. 340 the following courses: Easterly approximately 2,454 feet and Northerly approximately 13,240 feet to a point of intersection with an East-West line having a Coordinate of Y = 389,634.00; thence East approximately 5,470 feet along said line to a point having Coordinates of X = 1,897,585.00 and Y = 389,634.00; thence South 10,443.00 feet to a point having Coordinates of X = 1,897,585.00 and Y = 379,191.00; thence West 4,000.00 feet to a point having Coordinates of X = 1,893,585.00 and Y = 379,191.00; thence South 8,037.00 feet to a point having Coordinates of X = 1,893,585.00 and Y = 371,154.00; thence West 3,924.00 feet to the point of beginning, **LESS AND EXCEPT**, that portion, if any of State Lease No. 340, as amended, which may lie within the above described tract, containing approximately **1,877.93 acres**, all as more particularly outlined on a plat on file in the Office of Mineral Resources, Department of Natural Resources. All bearings, distances and coordinates are based on Louisiana Coordinate System of 1927, (North or South Zone), where applicable.

NOTE: The above description of the Tract nominated for lease has been provided and corrected, where required, exclusively by the nomination party. Any mineral lease selected from this Tract and awarded by the Louisiana State Mineral Board shall be without warranty of any kind, either express, implied, or statutory, including, but not limited to, the implied warranties of merchantability and fitness for a particular purpose. Should the mineral lease awarded by the Louisiana State Mineral Board be subsequently modified, cancelled or abrogated due to the existence of conflicting leases, operating agreements, private claims or other future obligations or conditions which may affect all or any portion of the leased Tract, it shall not relieve the Lessee of the obligation to pay any bonus due thereon to the Louisiana State Mineral Board, nor shall the Louisiana State Mineral Board be obligated to refund any consideration paid by the Lessor prior to such modification, cancellation, or abrogation, including, but not limited to, bonuses, rentals and royalties.

NOTE: The State of Louisiana does hereby reserve, and this lease shall be subject to, the imprescriptible right of surface use in the nature of a servitude in favor of the Department of Natural Resources, including its Offices and Commissions, for the sole purpose of implementing, constructing, servicing and maintaining approved coastal zone management

and/or restoration projects. Utilization of any and all rights derived under this lease by the mineral lessee, its agents, successors or assigns, shall not interfere with nor hinder the reasonable surface use by the Department of Natural Resources, its Offices or Commissions, as herein above reserved.

NOTE: The Department of Wildlife and Fisheries has designated certain areas in the coastal waters of the State of Louisiana as Oyster Seed Bed Areas. The exact location of those Seed Bed Areas must be obtained from the Department of Wildlife and Fisheries and any work done under a mineral lease from the State of Louisiana may necessarily be conducted in conformity with the rules and regulations promulgated by the said Department of Wildlife and Fisheries for Oyster Seed Bed Areas.

Applicant: PATRICK L. DONOHUE PETROLEUM PROPERTIES, INC.

Bidder	Cash Payment	Price/ Acre	Rental	Oil	Gas	Other

09010063

Active_Lease

DOQQ2004

ST MARY PARISH

ATCHAFALAYA BAY

SL 340

P.O.B.

0 4,000 Feet

TRACT 40752 - Vermilion Parish, Louisiana

All of the lands now or formerly constituting the beds and bottoms of all water bodies of every nature and description as to which title is vested in the State of Louisiana, together with all islands arising therein and other lands formed by accretion or by reliction, where allowed by law, excepting tax adjudicated lands, and a portion of the bed and bottom of White Lake created by shoreline erosion since November of 1942, and therefore not in existence at the time Special Act No. 92 of the 1942 Regular Session of the Louisiana Legislature was enacted, claimed as one hundred percent (100%) owned by the State of Louisiana, not presently under mineral lease by the State of Louisiana on January 14, 2009 and being more particularly described as follows: Beginning at a point having Coordinates of X = 1,608,199.20 and Y = 377,864.00; thence North approximately 5,491 feet to a point of intersection with the 1942 Shoreline of White Lake having a Coordinate of X = 1,608,199.20; thence along the meanders of said 1942 Shoreline of White Lake the following: Easterly and Southeasterly to a point of intersection with a North-South line having a Coordinate of X = 1,622,800.00; thence South approximately 8,925 feet along said line to a point having Coordinates of X = 1,622,800.00 and Y = 365,223.00; thence West 4,324.00 feet to a point having Coordinates of X = 1,618,476.00 and Y = 365,223.00; thence North 8,713.00 feet to a point having Coordinates of X = 1,618,476.00 and Y = 373,936.00; thence North 37 degrees 15 minutes 36 seconds West 4,935.31 feet to a point having Coordinates of X = 1,615,488.00 and Y = 377,864.00; thence West 7,288.80 feet to the point of beginning, containing approximately **614 acres**, all as more particularly outlined on a plat on file in the Office of Mineral Resources, Department of Natural Resources. All bearings, distances and coordinates are based on Louisiana Coordinate System of 1927, (South Zone).

NOTE: Any lease on this Tract shall contain the following language, to wit: "Should a title dispute arise regarding this leased acreage and litigation ensue, lessee herein agrees to pay the State as billed by the State, any and all legal costs incurred by the State of Louisiana in defending its title to said leased acreage up to a maximum aggregate amount of one hundred fifty thousand and no/100 dollars (\$150,000.00) for all leases in the same area by the same lessee."

NOTE: The above description of the Tract nominated for lease has been provided and corrected, where required, exclusively by the nomination party. Any mineral lease selected from this Tract and awarded by the Louisiana State Mineral Board shall be without warranty of any kind, either express, implied, or statutory, including, but not limited to, the implied warranties of merchantability and fitness for a particular purpose. Should the mineral lease awarded by the Louisiana State Mineral Board be subsequently modified, cancelled or abrogated due to the existence of conflicting leases, operating agreements, private claims or other future obligations or conditions which may affect all or any portion of the leased Tract, it shall not relieve the Lessee of the obligation to

pay any bonus due thereon to the Louisiana State Mineral Board, nor shall the Louisiana State Mineral Board be obligated to refund any consideration paid by the Lessor prior to such modification, cancellation, or abrogation, including, but not limited to, bonuses, rentals and royalties.

NOTE: The Office of Mineral Resources will require a minimum bonus of \$300 per acre and a minimum royalty of 25%.

NOTE: The State of Louisiana does hereby reserve, and this lease shall be subject to, the imprescriptible right of surface use in the nature of a servitude in favor of the Department of Natural Resources, including its Offices and Commissions, for the sole purpose of implementing, constructing, servicing and maintaining approved coastal zone management and/or restoration projects. Utilization of any and all rights derived under this lease by the mineral lessee, its agents, successors or assigns, shall not interfere with nor hinder the reasonable surface use by the Department of Natural Resources, its Offices or Commissions, as herein above reserved.

Applicant: JOSEPH M. BENOIT

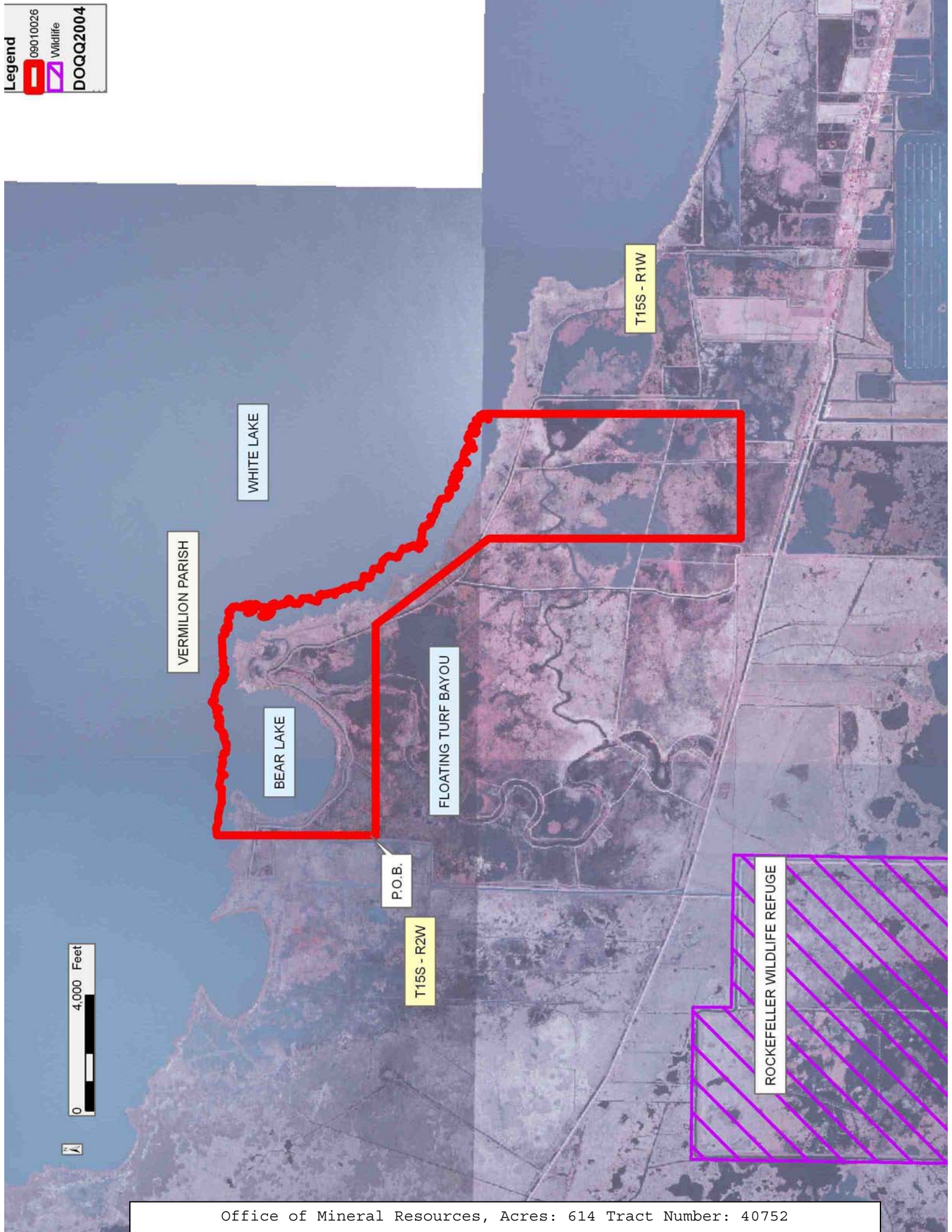
Bidder	Cash Payment	Price/ Acre	Rental	Oil	Gas	Other

Legend

09010026

Wildlife

DOQQ2004



VERMILION PARISH

WHITE LAKE

BEAR LAKE

FLOATING TURF BAYOU

P.O.B.

T15S - R2W

T15S - R1W

ROCKEFELLER WILDLIFE REFUGE



TRACT 40753 - St. Mary Parish, Louisiana

All of the lands now or formerly constituting the beds and bottoms of all water bodies of every nature and description as to which title is vested in the State of Louisiana, together with all islands arising therein and other lands formed by accretion or by reliction, where allowed by law, excepting tax adjudicated lands, and not presently under mineral lease on January 14, 2009, situated in St. Mary Parish, Louisiana, and more particularly described as follows: Beginning at a point having Coordinates of X = 1,893,585.00 and Y = 379,191.00; thence East 4,000.00 feet to a point having Coordinates of X = 1,897,585.00 and Y = 379,191.00; thence South 8,037.00 feet to a point having Coordinates of X = 1,897,585.00 and Y = 371,154.00; thence East 1,306.00 feet to a point having Coordinates of X = 1,898,891.00 and Y = 371,154.00; thence South 4,030.50 feet to a point having Coordinates of X = 1,898,891.00 and Y = 367,123.50; thence West 9,230.00 feet to a point having Coordinates of X = 1,889,661.00 and Y = 367,123.50; thence North 4,030.50 feet to a point having Coordinates of X = 1,889,661.00 and Y = 371,154.00; thence East 3,924.00 feet to a point having Coordinates of X = 1,893,585.00 and Y = 371,154.00; thence North 8,037.00 feet to the point of beginning, containing approximately **1,592.05 acres**, all as more particularly outlined on a plat on file in the Office of Mineral Resources, Department of Natural Resources. All bearings, distances and coordinates are based on Louisiana Coordinate System of 1927, (North or South Zone), where applicable.

NOTE: The above description of the Tract nominated for lease has been provided and corrected, where required, exclusively by the nomination party. Any mineral lease selected from this Tract and awarded by the Louisiana State Mineral Board shall be without warranty of any kind, either express, implied, or statutory, including, but not limited to, the implied warranties of merchantability and fitness for a particular purpose. Should the mineral lease awarded by the Louisiana State Mineral Board be subsequently modified, cancelled or abrogated due to the existence of conflicting leases, operating agreements, private claims or other future obligations or conditions which may affect all or any portion of the leased Tract, it shall not relieve the Lessee of the obligation to pay any bonus due thereon to the Louisiana State Mineral Board, nor shall the Louisiana State Mineral Board be obligated to refund any consideration paid by the Lessor prior to such modification, cancellation, or abrogation, including, but not limited to, bonuses, rentals and royalties.

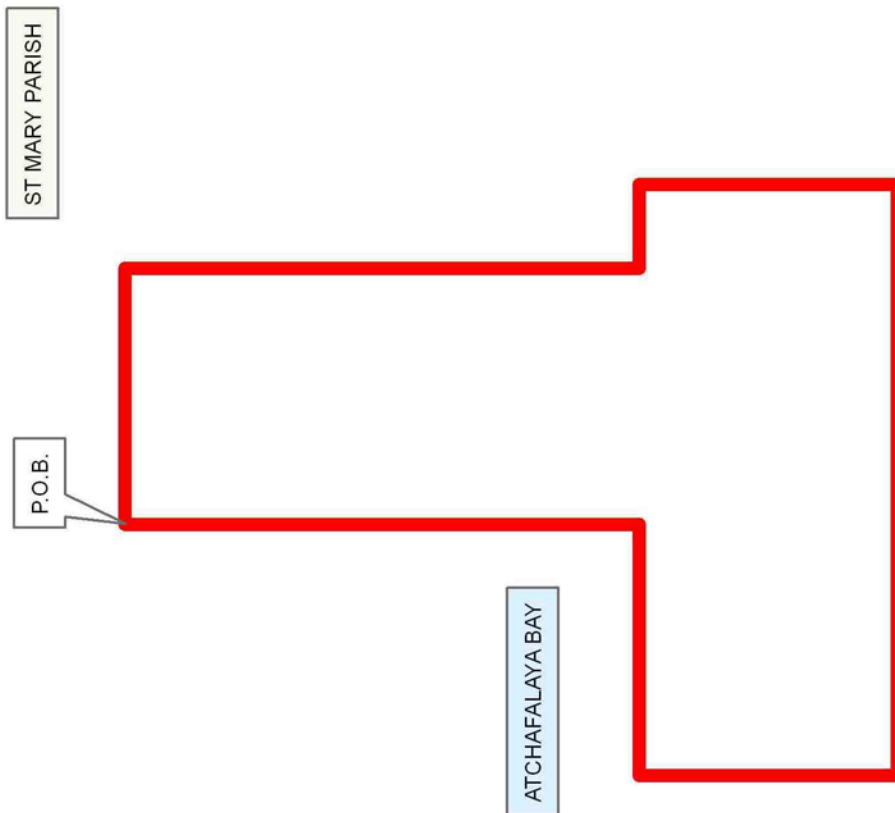
NOTE: The State of Louisiana does hereby reserve, and this lease shall be subject to, the imprescriptible right of surface use in the nature of a servitude in favor of the Department of Natural Resources, including its Offices and Commissions, for the sole purpose of implementing, constructing, servicing and maintaining approved coastal zone management and/or restoration projects. Utilization of any and all rights derived under this lease by the mineral lessee, its agents, successors or assigns, shall not interfere with nor hinder the reasonable surface use by the

Department of Natural Resources, its Offices or Commissions, as herein above reserved.

NOTE: The Department of Wildlife and Fisheries has designated certain areas in the coastal waters of the State of Louisiana as Oyster Seed Bed Areas. The exact location of those Seed Bed Areas must be obtained from the Department of Wildlife and Fisheries and any work done under a mineral lease from the State of Louisiana may necessarily be conducted in conformity with the rules and regulations promulgated by the said Department of Wildlife and Fisheries for Oyster Seed Bed Areas.

Applicant: PATRICK L. DONOHUE PETROLEUM PROPERTIES, INC.

Bidder	Cash Payment	Price/ Acre	Rental	Oil	Gas	Other



TRACT 40754 - St. Mary Parish, Louisiana

All of the lands now or formerly constituting the beds and bottoms of all water bodies of every nature and description as to which title is vested in the State of Louisiana, together with all islands arising therein and other lands formed by accretion or by reliction, where allowed by law, excepting tax adjudicated lands, and not presently under mineral lease on January 14, 2009, situated in St. Mary Parish, Louisiana, and more particularly described as follows: Beginning at a point having Coordinates of X = 1,897,585.00 and Y = 379,191.00; thence East 7,924.00 feet to a point having Coordinates of X = 1,905,509.00 and Y = 379,191.00; thence South 4,858.37 feet to a point on the North boundary of State Lease No. 5176, as amended, having Coordinates of X = 1,905,509.00 and Y = 374,332.63; thence along the boundary of said State Lease No. 5176 the following courses: West 2,005.00 feet and South 3,231.84 feet to its Southwest corner also being a point on the North boundary of State Lease No. 8091, as amended, having Coordinates of X = 1,903,504.00 and Y = 371,100.79; thence along the boundary of said State Lease No. 8091 the following courses: West 1,736.02 feet and South 08 degrees 31 minutes 46 seconds East 2,528.76 feet to its Southwest corner also being the Northwest corner of State Lease No. 9410, as amended, having Coordinates of X = 1,902,143.04 and Y = 368,600.00; thence South 08 degrees 31 minutes 46 seconds East 1,493.01 feet along the West boundary of said State Lease No. 9410 to a point having Coordinates of X = 1,902,364.48 and Y = 367,123.50; thence West 3,473.48 feet to a point having Coordinates of X = 1,898,891.00 and Y = 367,123.50; thence North 4,030.50 feet to a point having Coordinates of X = 1,898,891.00 and Y = 371,154.00; thence West 1,306.00 feet to a point having Coordinates of X = 1,897,585.00 and Y = 371,154.00; thence North 8,037.00 feet to the point of beginning, containing approximately **1,611.26 acres**, all as more particularly outlined on a plat on file in the Office of Mineral Resources, Department of Natural Resources. All bearings, distances and coordinates are based on Louisiana Coordinate System of 1927, (North or South Zone), where applicable.

NOTE: The above description of the Tract nominated for lease has been provided and corrected, where required, exclusively by the nomination party. Any mineral lease selected from this Tract and awarded by the Louisiana State Mineral Board shall be without warranty of any kind, either express, implied, or statutory, including, but not limited to, the implied warranties of merchantability and fitness for a particular purpose. Should the mineral lease awarded by the Louisiana State Mineral Board be subsequently modified, cancelled or abrogated due to the existence of conflicting leases, operating agreements, private claims or other future obligations or conditions which may affect all or any portion of the leased Tract, it shall not relieve the Lessee of the obligation to pay any bonus due thereon to the Louisiana State Mineral Board, nor shall the Louisiana State Mineral Board be obligated to refund any consideration paid by the Lessor prior to such modification, cancellation, or abrogation, including, but not limited to, bonuses, rentals and royalties.

NOTE: The State of Louisiana does hereby reserve, and this lease shall be subject to, the imprescriptible right of surface use in the nature of a servitude in favor of the Department of Natural Resources, including its Offices and Commissions, for the sole purpose of implementing, constructing, servicing and maintaining approved coastal zone management and/or restoration projects. Utilization of any and all rights derived under this lease by the mineral lessee, its agents, successors or assigns, shall not interfere with nor hinder the reasonable surface use by the Department of Natural Resources, its Offices or Commissions, as herein above reserved.

NOTE: The Department of Wildlife and Fisheries has designated certain areas in the coastal waters of the State of Louisiana as Oyster Seed Bed Areas. The exact location of those Seed Bed Areas must be obtained from the Department of Wildlife and Fisheries and any work done under a mineral lease from the State of Louisiana may necessarily be conducted in conformity with the rules and regulations promulgated by the said Department of Wildlife and Fisheries for Oyster Seed Bed Areas.

Applicant: PATRICK L. DONOHUE PETROLEUM PROPERTIES, INC.

Bidder	Cash Payment	Price/ Acre	Rental	Oil	Gas	Other

T15S - R8E

ST MARY PARISH

P.O.B.

ATCHAFALAYA BAY

SL 5176

SL 8091

SL 9410



TRACT 40755 - St. Mary Parish, Louisiana

All of the lands now or formerly constituting the beds and bottoms of all water bodies of every nature and description as to which title is vested in the State of Louisiana, together with all islands arising therein and other lands formed by accretion or by reliction, where allowed by law, excepting tax adjudicated lands, and not presently under mineral lease on January 14, 2009, situated in St. Mary Parish, Louisiana, and more particularly described as follows: Beginning at a point having Coordinates of X = 1,905,509.00 and Y = 379,191.00; thence East 7,924.00 feet to a point having Coordinates of X = 1,913,433.00 and Y = 379,191.00; thence South 8,037.00 feet to a point having Coordinates of X = 1,913,433.00 and Y = 371,154.00; thence West 1,306.00 feet to a point having Coordinates of X = 1,912,127.00 and Y = 371,154.00; thence South 4,030.50 feet to a point having Coordinates of X = 1,912,127.00 and Y = 367,123.50; thence West 3,829.00 feet to a point on the East boundary of State Lease No. 13470 having Coordinates of X = 1,908,298.00 and Y = 367,123.50; thence North 3,449.99 feet along the East boundary of said State Lease No. 13470 to a point on the Southern boundary of State Lease No. 5176, as amended, having Coordinates of X = 1,908,298.00 and Y = 370,573.49; thence along the boundary of said State Lease No. 5176 the following courses: South 73 degrees 52 minutes 35 seconds East 1,255.38 feet; North 4,107.77 feet and West 3,995.00 feet to a point on its North boundary having Coordinates of X = 1,905,509.00 and Y = 374,332.63; thence North 4,858.37 feet to the point of beginning, containing approximately **401 acres**, all as more particularly outlined on a plat on file in the Office of Mineral Resources, Department of Natural Resources. All bearings, distances and coordinates are based on Louisiana Coordinate System of 1927, (North or South Zone), where applicable.

NOTE: The above description of the Tract nominated for lease has been provided and corrected, where required, exclusively by the nomination party. Any mineral lease selected from this Tract and awarded by the Louisiana State Mineral Board shall be without warranty of any kind, either express, implied, or statutory, including, but not limited to, the implied warranties of merchantability and fitness for a particular purpose. Should the mineral lease awarded by the Louisiana State Mineral Board be subsequently modified, cancelled or abrogated due to the existence of conflicting leases, operating agreements, private claims or other future obligations or conditions which may affect all or any portion of the leased Tract, it shall not relieve the Lessee of the obligation to pay any bonus due thereon to the Louisiana State Mineral Board, nor shall the Louisiana State Mineral Board be obligated to refund any consideration paid by the Lessor prior to such modification, cancellation, or abrogation, including, but not limited to, bonuses, rentals and royalties.

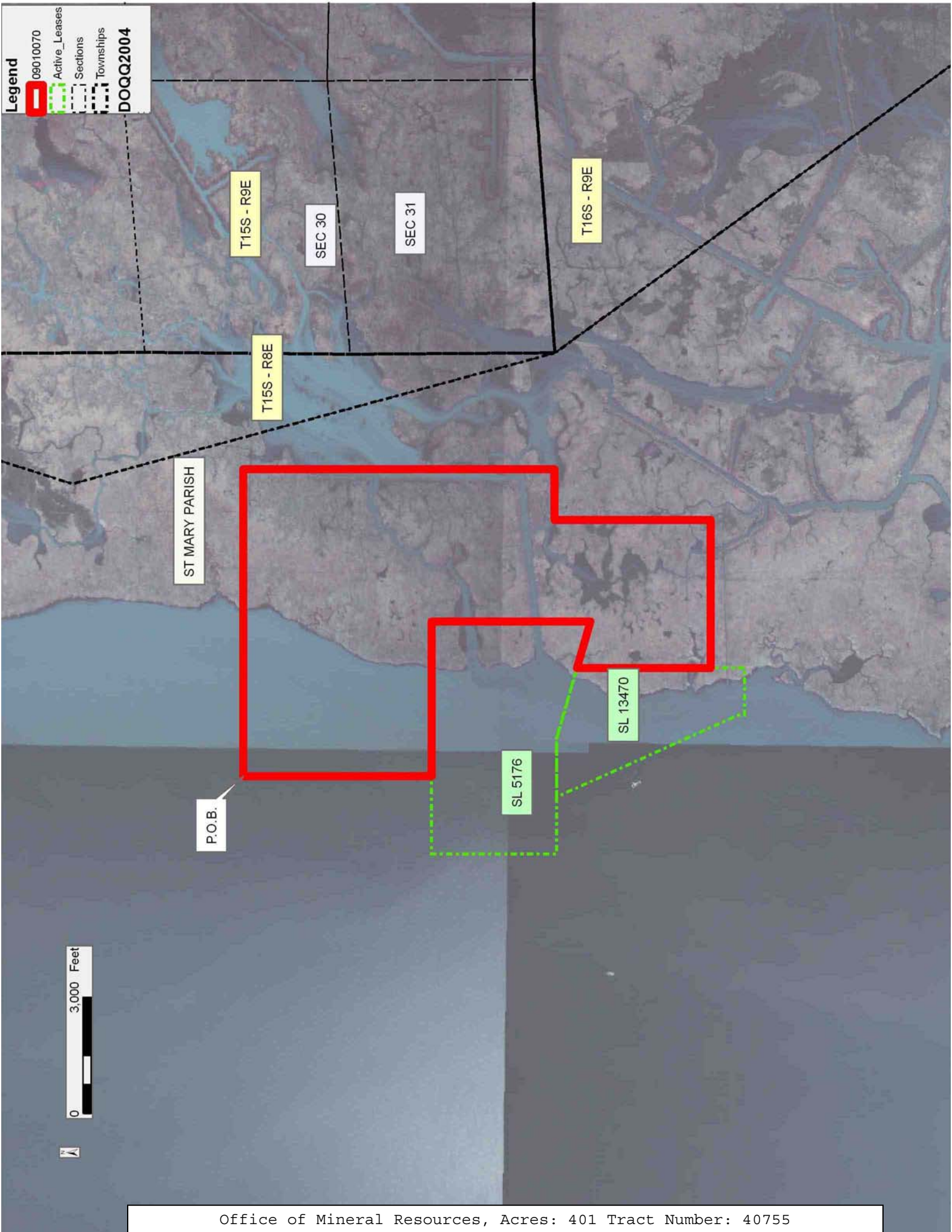
NOTE: The State of Louisiana does hereby reserve, and this lease shall be subject to, the imprescriptible right of surface use in the nature of a servitude in favor of the Department of Natural Resources, including its Offices and Commissions, for the sole purpose of implementing,

constructing, servicing and maintaining approved coastal zone management and/or restoration projects. Utilization of any and all rights derived under this lease by the mineral lessee, its agents, successors or assigns, shall not interfere with nor hinder the reasonable surface use by the Department of Natural Resources, its Offices or Commissions, as herein above reserved.

NOTE: The Department of Wildlife and Fisheries has designated certain areas in the coastal waters of the State of Louisiana as Oyster Seed Bed Areas. The exact location of those Seed Bed Areas must be obtained from the Department of Wildlife and Fisheries and any work done under a mineral lease from the State of Louisiana may necessarily be conducted in conformity with the rules and regulations promulgated by the said Department of Wildlife and Fisheries for Oyster Seed Bed Areas.

Applicant: PATRICK L. DONOHUE PETROLEUM PROPERTIES, INC.

Bidder	Cash Payment	Price/ Acre	Rental	Oil	Gas	Other



TRACT 40756 - Vermilion Parish, Louisiana

A portion of the bed and bottom of White Lake created by shoreline erosion since November of 1942, and therefore not in existence at the time Special Act No. 92 of the 1942 Regular Session of the Louisiana Legislature was enacted, claimed as one hundred percent (100%) owned by the State of Louisiana, not presently under mineral lease by the State of Louisiana on January 14, 2009 and being more particularly described as follows: Beginning at a point having Coordinates of X = 1,641,280.00 and Y = 363,628.09; thence North approximately 3,409 feet to a point of intersection with the 1942 Shoreline of White Lake having a Coordinate of X = 1,641,280.00; thence Northeasterly along the meanders of said 1942 Shoreline to the Southwest corner of State Lease No. 3052, as amended; thence Northeasterly and Easterly along the meanders of the common boundary of said 1942 Shoreline and said State Lease No. 3052 to its Southeast corner; thence Northeasterly along the meanders of said 1942 Shoreline to the Southwest corner of Operating Agreement No. 217; thence Northeasterly along the meanders of the common boundary of said 1942 Shoreline and said Operating Agreement No. 217 to its Southeast corner; thence Southerly approximately 11,524 feet to a point having Coordinates of X = 1,657,520.47 and Y = 363,628.09; thence West 16,240.47 feet to the point of beginning, **LESS AND EXCEPT** that portion, if any, of State Lease No. 3052, as amended, and Operating Agreement No. 217 which may lie within the above described tract, containing approximately **270 acres**, all as more particularly outlined on a plat on file in the Office of Mineral Resources, Department of Natural Resources. All bearings, distances and coordinates are based on Louisiana Coordinate System of 1927, (South Zone).

NOTE: Any lease on this Tract shall contain the following language, to wit: "Should a title dispute arise regarding this leased acreage and litigation ensue, lessee herein agrees to pay the State as billed by the State, any and all legal costs incurred by the State of Louisiana in defending its title to said leased acreage up to a maximum aggregate amount of one hundred fifty thousand and no/100 dollars (\$150,000.00) for all leases in the same area by the same lessee."

NOTE: The above description of the Tract nominated for lease has been provided and corrected, where required, exclusively by the nomination party. Any mineral lease selected from this Tract and awarded by the Louisiana State Mineral Board shall be without warranty of any kind, either express, implied, or statutory, including, but not limited to, the implied warranties of merchantability and fitness for a particular purpose. Should the mineral lease awarded by the Louisiana State Mineral Board be subsequently modified, cancelled or abrogated due to the existence of conflicting leases, operating agreements, private claims or other future obligations or conditions which may affect all or any portion of the leased Tract, it shall not relieve the Lessee of the obligation to pay any bonus due thereon to the Louisiana State Mineral Board, nor shall the Louisiana State Mineral Board be obligated to refund any consideration

paid by the Lessor prior to such modification, cancellation, or abrogation, including, but not limited to, bonuses, rentals and royalties.

NOTE: The Office of Mineral Resources will require a minimum bonus of \$300 per acre and a minimum royalty of 25%.

NOTE: The State of Louisiana does hereby reserve, and this lease shall be subject to, the imprescriptible right of surface use in the nature of a servitude in favor of the Department of Natural Resources, including its Offices and Commissions, for the sole purpose of implementing, constructing, servicing and maintaining approved coastal zone management and/or restoration projects. Utilization of any and all rights derived under this lease by the mineral lessee, its agents, successors or assigns, shall not interfere with nor hinder the reasonable surface use by the Department of Natural Resources, its Offices or Commissions, as herein above reserved.

Applicant: JOSEPH M. BENOIT

Bidder	Cash Payment	Price/ Acre	Rental	Oil	Gas	Other

Legend

09010024

Active_Leases

DOQQ2004

