

**TRACT 40737 - Red River Parish, Louisiana**

All of the lands now or formerly constituting the beds and bottoms of all water bodies of every nature and description as to which title is vested in the State of Louisiana, together with all islands arising therein and other lands formed by accretion or by reliction, where allowed by law, excepting tax adjudicated lands, and not presently under mineral lease on January 14, 2009, situated in Red River Parish, Louisiana, and more particularly described as follows: Beginning at the Southernmost Southeast corner of State Lease No. 18503 having Coordinates of X = 1,712,346.69 and Y = 513,454.43; thence North approximately 950 feet along the Eastern boundary of said State Lease No. 18503 to the Southwest corner of State Lease No. 18863, as amended, having a Coordinate of X = 1,712,346.69; thence along the boundary of said State Lease No. 18863 the following courses: Easterly approximately 1,323 feet; Northerly approximately 1,680 feet; Easterly approximately 1,785 feet and Northerly approximately 2,649 feet to its Northeast corner, also being a point on the boundary of said State Lease No. 18503; thence Easterly approximately 667 feet along the boundary of said State Lease No. 18503 to its Easternmost Southeast corner, also being the Southernmost Southwest corner of State Lease No. 18606 having Coordinates of X = 1,716,096.35 and Y = 518,755.14; thence North 89 degrees 41 minutes 00 seconds East 2,905.85 feet along the Southern boundary of said State Lease No. 18606 to a point having Coordinates of X = 1,719,002.16 and Y = 518,771.20; thence South 00 degrees 35 minutes 52 seconds West 5,317.06 feet to a point having Coordinates of X = 1,718,946.69 and Y = 513,454.43; thence West 6,600.00 feet to the point of beginning, **LESS AND EXCEPT** that portion, if any of State Lease No. 18503 and State Lease No. 18863, as amended, which may lie within the above described, containing approximately **101 acres**, all as more particularly outlined on a plat on file in the Office of Mineral Resources, Department of Natural Resources. All bearings, distances and coordinates are based on Louisiana Coordinate System of 1927, (North or South Zone), where applicable.

NOTE: The above description of the Tract nominated for lease has been provided and corrected, where required, exclusively by the nomination party. Any mineral lease selected from this Tract and awarded by the Louisiana State Mineral Board shall be without warranty of any kind, either express, implied, or statutory, including, but not limited to, the implied warranties of merchantability and fitness for a particular purpose. Should the mineral lease awarded by the Louisiana State Mineral Board be subsequently modified, cancelled or abrogated due to the existence of conflicting leases, operating agreements, private claims or other future obligations or conditions which may affect all or any portion of the leased Tract, it shall not relieve the Lessee of the obligation to pay any bonus due thereon to the Louisiana State Mineral Board, nor shall the Louisiana State Mineral Board be obligated to refund any consideration paid by the Lessor prior to such modification, cancellation, or abrogation, including, but not limited to, bonuses, rentals and royalties.

NOTE: The Office of Mineral Resources will require a minimum bonus of \$575 per acre and a minimum royalty of 25%.

Applicant: STAFF OFFICE OF MINERAL RESOURCES

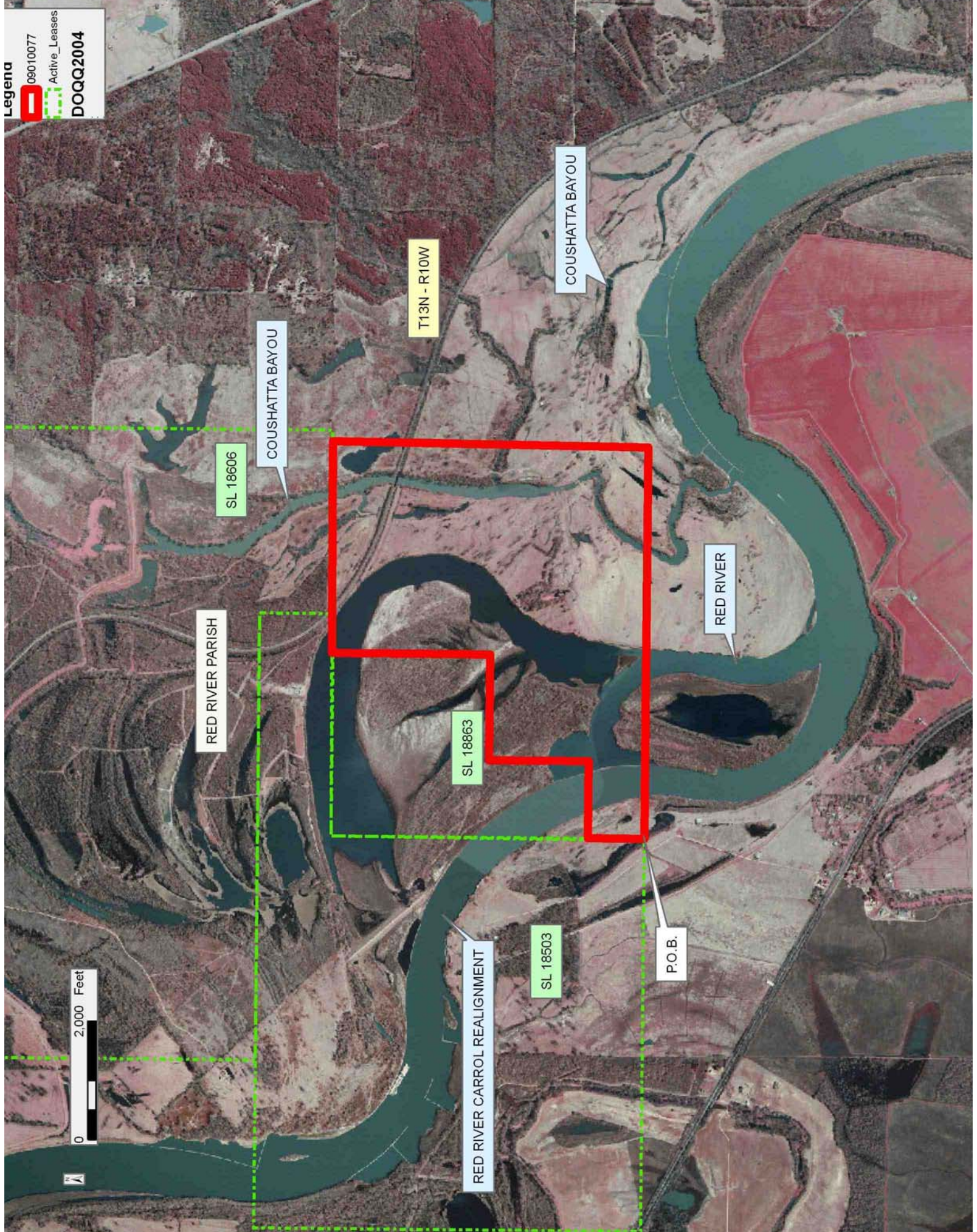
Bidder	Cash Payment	Price/Acre	Rental	Oil	Gas	Other



**Legenda**

- 09010077
- Active\_Leases

**DOQQ2004**





**TRACT 40738 - Concordia Parish, Louisiana**

All of the lands now or formerly constituting the beds and bottoms of all water bodies of every nature and description as to which title is vested in the State of Louisiana, together with all islands arising therein and other lands formed by accretion or by reliction, where allowed by law, excepting tax adjudicated lands, and not presently under mineral lease on January 14, 2009, situated in Concordia Parish, Louisiana, and more particularly described as follows: Beginning at a point having Coordinates of X = 2,281,888.58 and Y = 139,185.74; thence South 50 degrees 00 minutes 00 seconds East 16,000.00 feet to a point having Coordinates of X = 2,294,145.29 and Y = 128,901.14; thence South 39 degrees 00 minutes 07 seconds West 8,453.30 feet to a point having Coordinates of X = 2,288,825.23 and Y = 122,331.87; thence North 47 degrees 00 minutes 00 seconds West 15,500.00 feet to a point having Coordinates of X = 2,277,489.25 and Y = 132,902.84; thence North 35 degrees 00 minutes 00 seconds East 7,670.00 feet to the point of beginning, (This lease includes only waterbottoms claimed and owned by the state and specifically excludes any land which the state may claim or own and to which the mineral rights are vested in the state), containing approximately **230 acres**, all as more particularly outlined on a plat on file in the Office of Mineral Resources, Department of Natural Resources. All bearings, distances and coordinates are based on Louisiana Coordinate System of 1927, (North or South Zone), where applicable.

NOTE: The above description of the Tract nominated for lease has been provided and corrected, where required, exclusively by the nomination party. Any mineral lease selected from this Tract and awarded by the Louisiana State Mineral Board shall be without warranty of any kind, either express, implied, or statutory, including, but not limited to, the implied warranties of merchantability and fitness for a particular purpose. Should the mineral lease awarded by the Louisiana State Mineral Board be subsequently modified, cancelled or abrogated due to the existence of conflicting leases, operating agreements, private claims or other future obligations or conditions which may affect all or any portion of the leased Tract, it shall not relieve the Lessee of the obligation to pay any bonus due thereon to the Louisiana State Mineral Board, nor shall the Louisiana State Mineral Board be obligated to refund any consideration paid by the Lessor prior to such modification, cancellation, or abrogation, including, but not limited to, bonuses, rentals and royalties.

Applicant: THEOPHILUS OIL, GAS & LAND SERVICES, LLC

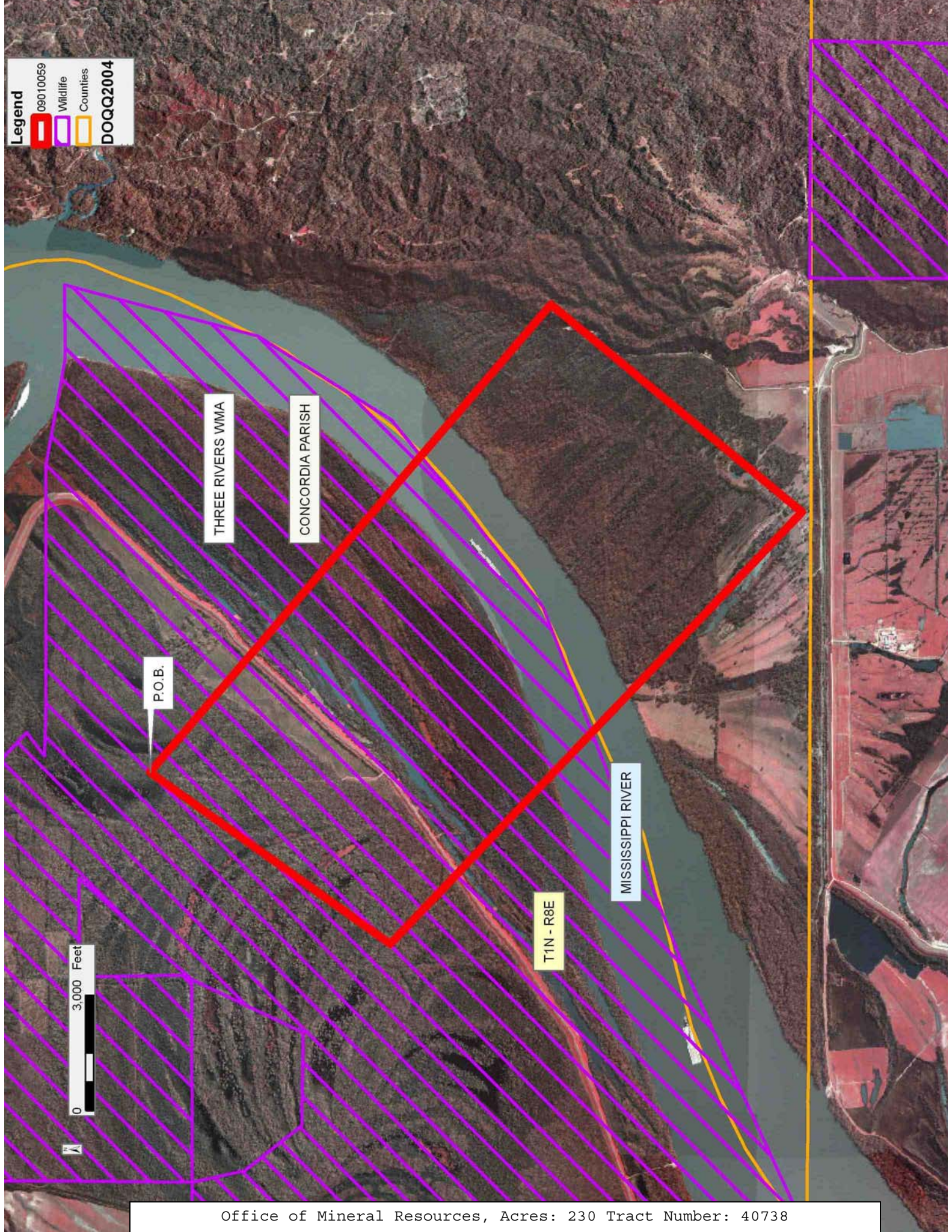
Bidder	Cash Payment	Price/Acre	Rental	Oil	Gas	Other



**Legend**

- 09010059
- Wildlife
- Counties

**DOQQ2004**



THREE RIVERS WMA

CONCORDIA PARISH

P.O.B.

MISSISSIPPI RIVER

T1N - R8E

0 3,000 Feet





**TRACT 40739 - St. Landry Parish, Louisiana**

All of the lands now or formerly constituting the beds and bottoms of all water bodies of every nature and description as to which title is vested in the State of Louisiana, together with all islands arising therein and other lands formed by accretion or by reliction, where allowed by law, excepting tax adjudicated lands, and not presently under mineral lease on January 14, 2009, situated in St. Landry Parish, Louisiana, and more particularly described as follows: Beginning at a point having Coordinates of X = 1,834,068.00 and Y = 765,735.00; thence East 18,480.00 feet to a point having Coordinates of X = 1,852,548.00 and Y = 765,735.00; thence South approximately 2,434 feet to a point on the North boundary of State Lease No. 7715, as amended having a Coordinate of X = 1,852,548.00; thence along the boundary of said State Lease No. 7715 the following courses: North 89 degrees 37 minutes 02 seconds West approximately 2,630 feet, South 00 degrees 42 minutes 56 seconds West 2,557.88 feet, and North 89 degrees 58 minutes 29 seconds East approximately 1,629 feet to the Northwest corner of State Lease No. 19772; thence along the boundary of said State Lease No. 19772 the following courses: Southerly approximately 2,626 feet, Westerly approximately 399 feet, Southerly approximately 5,296 feet to its Southwest corner having Coordinates of X = 1,850,961.51 and Y = 752,840.90, and East 1,586.49 feet to a point having Coordinates of X = 1,852,548.00 and Y = 752,840.90; thence South 5,585.90 feet to a point having Coordinates of X = 1,852,548.00 and Y = 747,255.00; thence West 18,480.00 feet to a point having Coordinates of X = 1,834,068.00 and Y = 747,255.00; thence North 18,480.00 feet to the point of beginning, containing approximately **84 acres**, all as more particularly outlined on a plat on file in the Office of Mineral Resources, Department of Natural Resources. All bearings, distances and coordinates are based on Louisiana Coordinate System of 1927, (North or South Zone), where applicable.

NOTE: The above description of the Tract nominated for lease has been provided and corrected, where required, exclusively by the nomination party. Any mineral lease selected from this Tract and awarded by the Louisiana State Mineral Board shall be without warranty of any kind, either express, implied, or statutory, including, but not limited to, the implied warranties of merchantability and fitness for a particular purpose. Should the mineral lease awarded by the Louisiana State Mineral Board be subsequently modified, cancelled or abrogated due to the existence of conflicting leases, operating agreements, private claims or other future obligations or conditions which may affect all or any portion of the leased Tract, it shall not relieve the Lessee of the obligation to pay any bonus due thereon to the Louisiana State Mineral Board, nor shall the Louisiana State Mineral Board be obligated to refund any consideration paid by the Lessor prior to such modification, cancellation, or abrogation, including, but not limited to, bonuses, rentals and royalties.

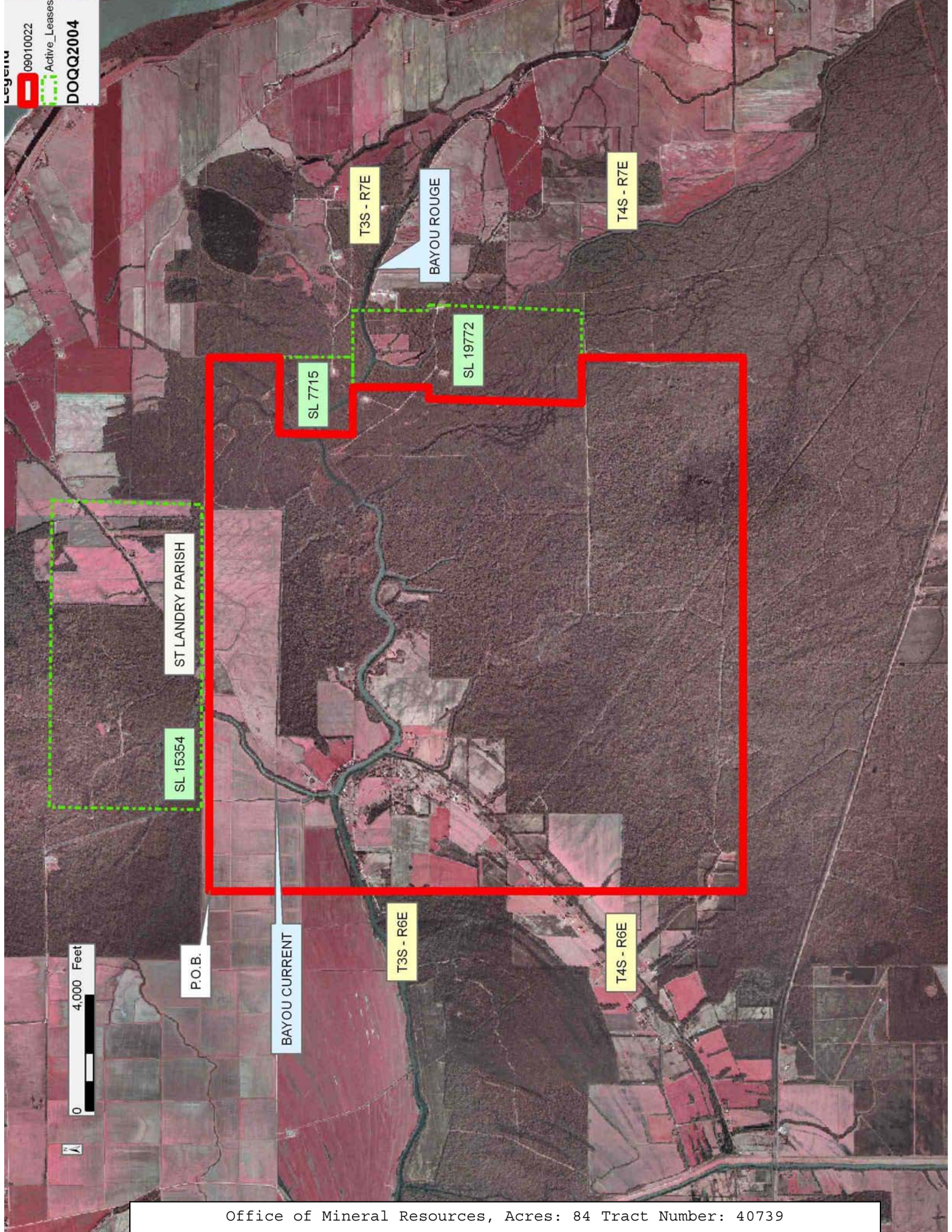
Applicant: WOODLAND PETROLEUM CORPORATION

Bidder	Cash Payment	Price/Acre	Rental	Oil	Gas	Other



Legend

- 09010022
- Active\_Leases
- DOQQ2004





**TRACT 40740 - Pointe Coupee and St. Landry Parishes, Louisiana**

All of the lands now or formerly constituting the beds and bottoms of all water bodies of every nature and description as to which title is vested in the State of Louisiana, together with all islands arising therein and other lands formed by accretion or by reliction, where allowed by law, excepting tax adjudicated lands, and not presently under mineral lease on January 14, 2009, situated in Pointe Coupee and St. Landry Parishes, Louisiana, and more particularly described as follows: Beginning at a point having Coordinates of X = 1,852,548.00 and Y = 765,735.00; thence East 18,480.00 feet to a point having Coordinates of X = 1,871,028.00 and Y = 765,735.00; thence South 18,480.00 feet to a point having Coordinates of X = 1,871,028.00 and Y = 747,255.00; thence West 18,480.00 feet to a point having Coordinates of X = 1,852,548.00 and Y = 747,255.00; thence North 5,585.90 feet to a point on the South line of State Lease No. 19772 having Coordinates of X = 1,852,548.00 and Y = 752,840.90; thence along the boundary of said State Lease No. 19772 the following courses: East 1,619.86 feet to its Southeast corner having Coordinates of X = 1,854,167.86 and Y = 752,840.90, and Northerly approximately 5,295 feet to a point on the South boundary of State Lease No. 7716, as amended; thence along the boundary of said State Lease No. 7716 the following courses: South 89 degrees 54 minutes 36 seconds East approximately 2,459 feet, North 00 degrees 06 minutes 37 seconds West 2,626.38 feet and North 89 degrees 54 minutes 36 seconds West 2,649.88 feet to its Northwest corner, also being the Northeast corner of said State Lease No. 19772; thence Westerly approximately 1,615 feet along the North line of said State Lease No. 19772 to its Northwest corner, also being the Southeast corner of State Lease No. 7715, as amended; thence along the boundary of said State Lease No. 7715 the following courses: North 00 degrees 04 minutes 38 seconds West 2,538.89 feet and North 89 degrees 37 minutes 02 seconds West approximately 6 feet to the point of intersection with a North South line having a Coordinate of X = 1,852,548.00; thence North approximately 2,434 feet to the point of beginning, containing approximately **734 acres**, all as more particularly outlined on a plat on file in the Office of Mineral Resources, Department of Natural Resources. All bearings, distances and coordinates are based on Louisiana Coordinate System of 1927, (North or South Zone), where applicable.

NOTE: The above description of the Tract nominated for lease has been provided and corrected, where required, exclusively by the nomination party. Any mineral lease selected from this Tract and awarded by the Louisiana State Mineral Board shall be without warranty of any kind, either express, implied, or statutory, including, but not limited to, the implied warranties of merchantability and fitness for a particular purpose. Should the mineral lease awarded by the Louisiana State Mineral Board be subsequently modified, cancelled or abrogated due to the existence of conflicting leases, operating agreements, private claims or other future obligations or conditions which may affect all or any portion of the leased Tract, it shall not relieve the Lessee of the obligation to pay any bonus due thereon to the Louisiana State Mineral Board, nor shall

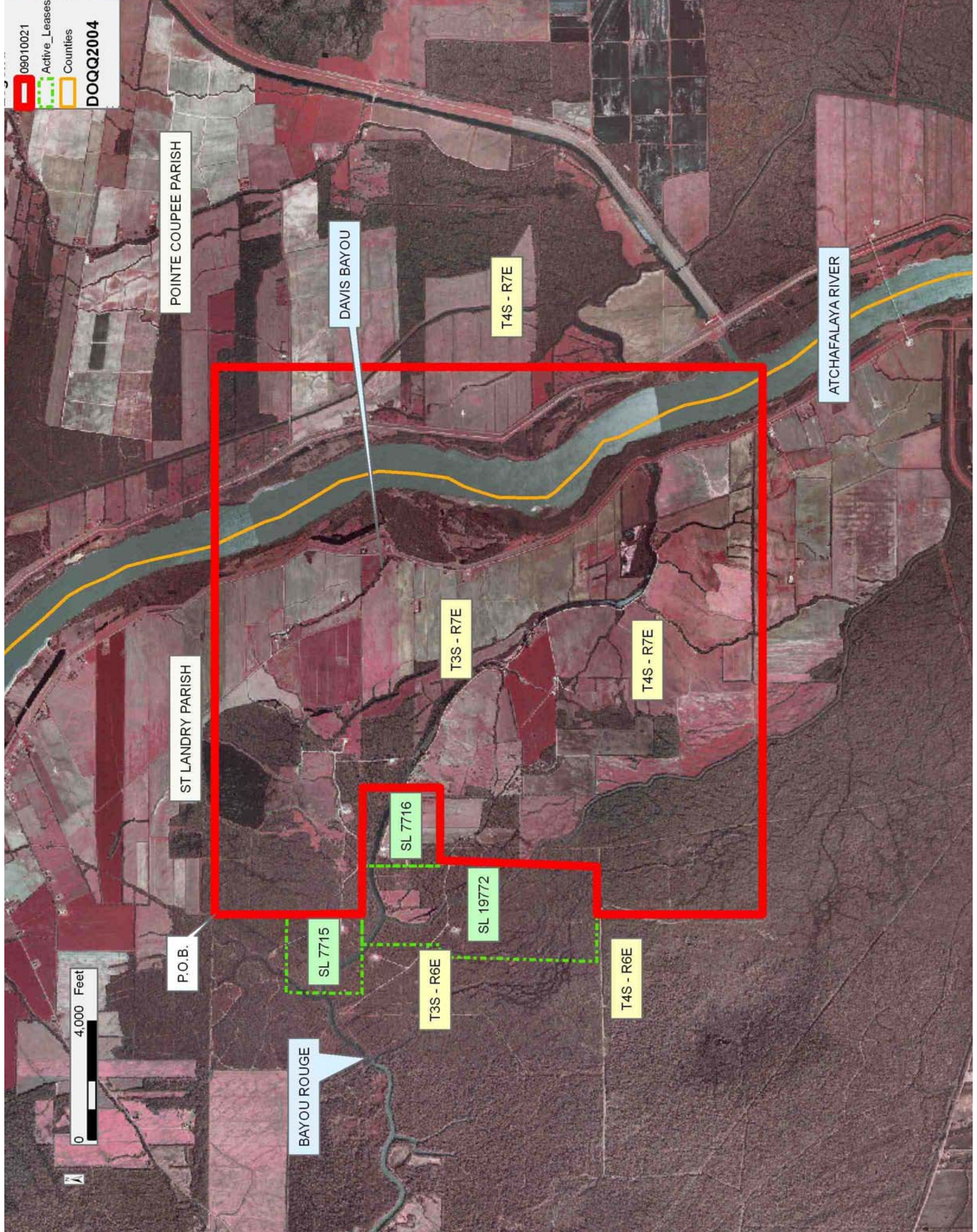
the Louisiana State Mineral Board be obligated to refund any consideration paid by the Lessor prior to such modification, cancellation, or abrogation, including, but not limited to, bonuses, rentals and royalties.

Applicant: WOODLAND PETROLEUM CORPORATION

Bidder	Cash Payment	Price/Acre	Rental	Oil	Gas	Other



09010021  
 Active\_Leases  
 Counties  
 DOQQ2004





**TRACT 40741 - Vermilion Parish, Louisiana**

A portion of the bed and bottom of White Lake created by shoreline erosion since November of 1942, and therefore not in existence at the time Special Act No. 92 of the 1942 Regular Session of the Louisiana Legislature was enacted, claimed as one hundred percent (100%) owned by the State of Louisiana, not presently under mineral lease by the State of Louisiana on January 14, 2009 and being more particularly described as follows: Beginning at a point having Coordinates of X = 1,602,621.60 and Y = 425,204.00; thence East 13,202.56 feet to a point having Coordinates of X = 1,615,824.16 and Y = 425,204.00; thence South approximately 5,986 feet to a point of intersection with the 1942 Shoreline of White Lake having a Coordinate of X = 1,615,824.16; thence Westerly, Northwesterly and Southwesterly along the meanders of said 1942 Shoreline of White Lake to a point of intersection with an East-West line having a Coordinate of Y = 416,252.50; thence West approximately 2,273 feet along said line to a point having Coordinates of X = 1,602,621.60 and Y = 416,252.50; thence North 8,951.50 feet to the point of beginning, containing approximately **61 acres**, all as more particularly outlined on a plat on file in the Office of Mineral Resources, Department of Natural Resources. All bearings, distances and coordinates are based on Louisiana Coordinate System of 1927, (South Zone).

NOTE: Any lease on this Tract shall contain the following language, to wit: "Should a title dispute arise regarding this leased acreage and litigation ensue, lessee herein agrees to pay the State as billed by the State, any and all legal costs incurred by the State of Louisiana in defending its title to said leased acreage up to a maximum aggregate amount of one hundred fifty thousand and no/100 dollars (\$150,000.00) for all leases in the same area by the same lessee."

NOTE: The above description of the Tract nominated for lease has been provided and corrected, where required, exclusively by the nomination party. Any mineral lease selected from this Tract and awarded by the Louisiana State Mineral Board shall be without warranty of any kind, either express, implied, or statutory, including, but not limited to, the implied warranties of merchantability and fitness for a particular purpose. Should the mineral lease awarded by the Louisiana State Mineral Board be subsequently modified, cancelled or abrogated due to the existence of conflicting leases, operating agreements, private claims or other future obligations or conditions which may affect all or any portion of the leased Tract, it shall not relieve the Lessee of the obligation to pay any bonus due thereon to the Louisiana State Mineral Board, nor shall the Louisiana State Mineral Board be obligated to refund any consideration paid by the Lessor prior to such modification, cancellation, or abrogation, including, but not limited to, bonuses, rentals and royalties.

NOTE: The State of Louisiana does hereby reserve, and this lease shall be subject to, the imprescriptible right of surface use in the nature of a servitude in favor of the Department of Natural Resources, including its

Offices and Commissions, for the sole purpose of implementing, constructing, servicing and maintaining approved coastal zone management and/or restoration projects. Utilization of any and all rights derived under this lease by the mineral lessee, its agents, successors or assigns, shall not interfere with nor hinder the reasonable surface use by the Department of Natural Resources, its Offices or Commissions, as herein above reserved.

Applicant: JOSEPH M. BENOIT

Bidder	Cash Payment	Price/Acre	Rental	Oil	Gas	Other



09010029  
Wildlife  
Active\_Lease  
Sections  
Townships  
DOQQ2004

VERMILION PARISH

WHITE LAKE WETLANDS CONSERVATION AREA

WHITE LAKE

SEC 16

T14S - R2W

SL 11151

P.O.B.

0 2,000 Feet

**TRACT 40742 - Vermilion Parish, Louisiana**

A portion of the bed and bottom of White Lake created by shoreline erosion since November of 1942, and therefore not in existence at the time Special Act No. 92 of the 1942 Regular Session of the Louisiana Legislature was enacted, claimed as one hundred percent (100%) owned by the State of Louisiana, not presently under mineral lease by the State of Louisiana on January 14, 2009 and being more particularly described as follows: Beginning at a point having Coordinates of X = 1,615,824.16 and Y = 425,204.00; thence East 13,751.40 feet to a point having Coordinates of X = 1,629,575.56 and Y = 425,204.00; thence South 13,465.98 feet to a point on the North boundary of State Lease No. 18648 having Coordinates of X = 1,629,575.56 and Y = 411,738.02; thence West approximately 2,051 feet along the North boundary of said State Lease No. 18648 to a point of intersection with the 1942 Shoreline of White Lake having a Coordinate of Y = 411,738.02; thence Northwesterly along the meanders of said 1942 Shoreline of White Lake to a point of intersection with a North-South line having a Coordinate of X = 1,615,824.16; thence North approximately 5,986 feet along said line to the point of beginning, containing approximately **152 acres**, all as more particularly outlined on a plat on file in the Office of Mineral Resources, Department of Natural Resources. All bearings, distances and coordinates are based on Louisiana Coordinate System of 1927, (South Zone).

NOTE: Any lease on this Tract shall contain the following language, to wit: "Should a title dispute arise regarding this leased acreage and litigation ensue, lessee herein agrees to pay the State as billed by the State, any and all legal costs incurred by the State of Louisiana in defending its title to said leased acreage up to a maximum aggregate amount of one hundred fifty thousand and no/100 dollars (\$150,000.00) for all leases in the same area by the same lessee."

NOTE: The above description of the Tract nominated for lease has been provided and corrected, where required, exclusively by the nomination party. Any mineral lease selected from this Tract and awarded by the Louisiana State Mineral Board shall be without warranty of any kind, either express, implied, or statutory, including, but not limited to, the implied warranties of merchantability and fitness for a particular purpose. Should the mineral lease awarded by the Louisiana State Mineral Board be subsequently modified, cancelled or abrogated due to the existence of conflicting leases, operating agreements, private claims or other future obligations or conditions which may affect all or any portion of the leased Tract, it shall not relieve the Lessee of the obligation to pay any bonus due thereon to the Louisiana State Mineral Board, nor shall the Louisiana State Mineral Board be obligated to refund any consideration paid by the Lessor prior to such modification, cancellation, or abrogation, including, but not limited to, bonuses, rentals and royalties.

NOTE: The State of Louisiana does hereby reserve, and this lease shall be subject to, the imprescriptible right of surface use in the nature of a

servitude in favor of the Department of Natural Resources, including its Offices and Commissions, for the sole purpose of implementing, constructing, servicing and maintaining approved coastal zone management and/or restoration projects. Utilization of any and all rights derived under this lease by the mineral lessee, its agents, successors or assigns, shall not interfere with nor hinder the reasonable surface use by the Department of Natural Resources, its Offices or Commissions, as herein above reserved.

Applicant: JOSEPH M. BENOIT

Bidder	Cash Payment	Price/Acre	Rental	Oil	Gas	Other



09010030  
 Wildlife  
 Active\_Lease  
 Sections  
 Townships  
**DOQQ2004**

WHITE LAKE WETLANDS CONSERVATION AREA

T14S - R1W

SL 18648

VERMILION PARISH

WHITE LAKE

P.O.B.

0 3,000 Feet

**TRACT 40743 - Portion of Block 47, Chandeleur Sound Area, St. Bernard Parish, Louisiana**

All of the lands now or formerly constituting the beds and bottoms of all water bodies of every nature and description as to which title is vested in the State of Louisiana, together with all islands arising therein and other lands formed by accretion or by reliction, where allowed by law, excepting tax adjudicated lands, and not presently under mineral lease on January 14, 2009, situated in St. Bernard Parish, Louisiana, and more particularly described as follows: Beginning at a point on the West line of Block 47, Chandeleur Sound Area, having Coordinates of X = 2,591,100.00 and Y = 403,455.00; thence East 14,750.00 feet to a point on the East line of said Block 47 having Coordinates of X = 2,605,850.00 and Y = 403,455.00; thence South 1,455.00 feet along the East line of said Block 47 to the Northeast corner of State Lease No. 4039, as amended having Coordinates of X = 2,605,850.00 and Y = 402,000.00; thence along the boundary of said State Lease No. 4039 the following courses: West 7,375.00 feet and South 5,920.00 feet to its Southwest corner, also being a point on the South line of said Block 47 having Coordinates of X = 2,598,475.00 and Y = 396,080.00; thence West 7,375.00 feet along the South line of said Block 47 to its Southwest corner having Coordinates of X = 2,591,100.00 and Y = 396,080.00; thence North 2,862.98 feet along the West line of said Block 47 to the Southwest corner of State Lease No. 19946 having Coordinates of X = 2,591,100.00 and Y = 398,942.98; thence North 53 degrees 37 minutes 01 seconds East 3,105.32 feet along the boundary of said State Lease No. 19946 to its Northeast corner also being the Southeast corner of State Lease No. 19563 having Coordinates of X = 2,593,600.00 and Y = 400,785.00; thence along the boundary of said State Lease No. 19563 the following courses: North 1,805.00 feet and West 2,500.00 feet to its Northwest corner, also being a point on the West Line of said Block 47 having Coordinates of X = 2,591,100.00 and Y = 402,590.00; thence North 865.00 feet along the West Line of said Block 47 to the point of beginning, containing approximately **1,061 acres**, all as more particularly outlined on a plat on file in the Office of Mineral Resources, Department of Natural Resources. All bearings, distances and coordinates are based on Louisiana Coordinate System of 1927, (North or South Zone), where applicable.

NOTE: The above description of the Tract nominated for lease has been provided and corrected, where required, exclusively by the nomination party. Any mineral lease selected from this Tract and awarded by the Louisiana State Mineral Board shall be without warranty of any kind, either express, implied, or statutory, including, but not limited to, the implied warranties of merchantability and fitness for a particular purpose. Should the mineral lease awarded by the Louisiana State Mineral Board be subsequently modified, cancelled or abrogated due to the existence of conflicting leases, operating agreements, private claims or other future obligations or conditions which may affect all or any portion of the leased Tract, it shall not relieve the Lessee of the obligation to pay any bonus due thereon to the Louisiana State Mineral Board, nor shall



the Louisiana State Mineral Board be obligated to refund any consideration paid by the Lessor prior to such modification, cancellation, or abrogation, including, but not limited to, bonuses, rentals and royalties.

NOTE: NOTE: The Office of Mineral Resources will require a minimum bonus of \$250 per acre and a minimum royalty of 21.5%.

NOTE: The State of Louisiana does hereby reserve, and this lease shall be subject to, the imprescriptible right of surface use in the nature of a servitude in favor of the Department of Natural Resources, including its Offices and Commissions, for the sole purpose of implementing, constructing, servicing and maintaining approved coastal zone management and/or restoration projects. Utilization of any and all rights derived under this lease by the mineral lessee, its agents, successors or assigns, shall not interfere with nor hinder the reasonable surface use by the Department of Natural Resources, its Offices or Commissions, as herein above reserved.

Applicant: STAFF OFFICE OF MINERAL RESOURCES

Bidder	Cash Payment	Price/Acre	Rental	Oil	Gas	Other

**Legend**

- 09010078
- Blocks
- Active\_Leases

SL 2220

CS0048

CS0071

CHANDELEUR SOUND AREA

LAKE ELOI

ST BERNARD PARISH

SL 4039

CS0047

T15S - R17E

CS0072

LAKE ATHANASIO

P.O.B.

SL 19563



SL 19277

SL 19946

CS0073



**TRACT 40744 - Cameron Parish, Louisiana**

All of the lands now or formerly constituting the beds and bottoms of all water bodies of every nature and description as to which title is vested in the State of Louisiana, together with all islands arising therein and other lands formed by accretion or by reliction, where allowed by law, excepting tax adjudicated lands, and not presently under mineral lease on January 14, 2009, situated in Cameron Parish, Louisiana, and more particularly described as follows: Beginning at a point having Coordinates of X = 1,459,500.00 and Y = 414,654.70; thence East 17,630.13 feet to a point having Coordinates of X = 1,477,130.13 and Y = 414,654.70; thence South 6,585.81 feet to the Northwest corner of State Lease No. 16874, as amended, having Coordinates of X = 1,477,130.13 and Y = 408,068.89; thence South 01 degrees 16 minutes 40 seconds West 2,750.00 feet along the west boundary of said State Lease No. 16874 to its Southwest corner having Coordinates of X = 1,477,068.80 and Y = 405,319.57; thence South 4,623.57 feet to a point having Coordinates of X = 1,477,068.80 and Y = 400,696.00; thence West 12,935.84 feet to a point having Coordinates of X = 1,464,132.96 and Y = 400.696.00; thence North 3,772.37 feet to a point having Coordinate of X = 1,464,132.96 and Y = 404,468.37; thence West 4,632.96 feet to a point having Coordinates of X = 1,459,500.00 and Y = 404,468.38; thence continue North 10,186.32 feet to the point of beginning, containing approximately **279 acres**, all as more particularly outlined on a plat on file in the Office of Mineral Resources, Department of Natural Resources. All bearings, distances and coordinates are based on Louisiana Coordinate System of 1927, (North or South Zone), where applicable.

NOTE: The above description of the Tract nominated for lease has been provided and corrected, where required, exclusively by the nomination party. Any mineral lease selected from this Tract and awarded by the Louisiana State Mineral Board shall be without warranty of any kind, either express, implied, or statutory, including, but not limited to, the implied warranties of merchantability and fitness for a particular purpose. Should the mineral lease awarded by the Louisiana State Mineral Board be subsequently modified, cancelled or abrogated due to the existence of conflicting leases, operating agreements, private claims or other future obligations or conditions which may affect all or any portion of the leased Tract, it shall not relieve the Lessee of the obligation to pay any bonus due thereon to the Louisiana State Mineral Board, nor shall the Louisiana State Mineral Board be obligated to refund any consideration paid by the Lessor prior to such modification, cancellation, or abrogation, including, but not limited to, bonuses, rentals and royalties.

NOTE: The State of Louisiana does hereby reserve, and this lease shall be subject to, the imprescriptible right of surface use in the nature of a servitude in favor of the Department of Natural Resources, including its Offices and Commissions, for the sole purpose of implementing, constructing, servicing and maintaining approved coastal zone management and/or restoration projects. Utilization of any and all rights derived

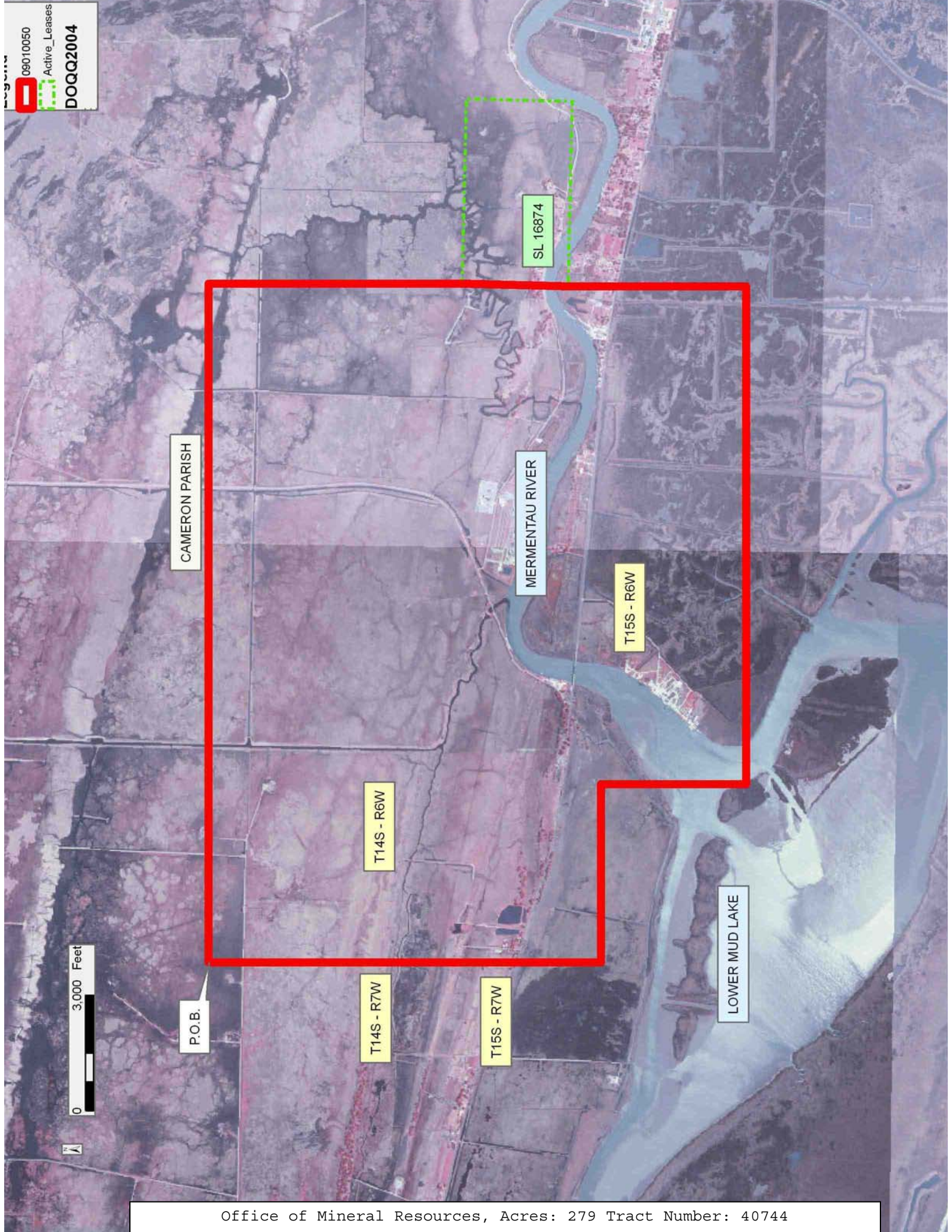
under this lease by the mineral lessee, its agents, successors or assigns, shall not interfere with nor hinder the reasonable surface use by the Department of Natural Resources, its Offices or Commissions, as herein above reserved.

Applicant: CYPRESS ENERGY CORPORATION

Bidder	Cash Payment	Price/Acre	Rental	Oil	Gas	Other



09010050  
Active\_Leases  
DOQQ2004



CAMERON PARISH

MERMENTAU RIVER

LOWER MUD LAKE

SL 16874

T15S - R6W

T14S - R6W

T14S - R7W

T15S - R7W

P.O.B.

0 3,000 Feet

**TRACT 40745 - Cameron and Vermilion Parishes, Louisiana**

A portion of the bed and bottom of White Lake created by shoreline erosion since November of 1942, and therefore not in existence at the time Special Act No. 92 of the 1942 Regular Session of the Louisiana Legislature was enacted, claimed as one hundred percent (100%) owned by the State of Louisiana, not presently under mineral lease by the State of Louisiana on January 14, 2009 and being more particularly described as follows: Beginning at a point having Coordinates of X = 1,592,736.66 and Y = 411,781.46; thence East approximately 6,374 feet to a point of intersection with the 1942 Shoreline of White Lake having a Coordinate Y = 411,781.46; thence Southwesterly and Southerly along the meanders of said 1942 Shoreline of White Lake to a point of intersection with an East-West line having a Coordinate of Y = 395,587.12; thence West approximately 3,359 feet along said line to a point having Coordinates of X = 1,592,736.66 and Y = 395,587.12; thence North 16,194.34 feet to the point of beginning, containing approximately **270 acres**, all as more particularly outlined on a plat on file in the Office of Mineral Resources, Department of Natural Resources. All bearings, distances and coordinates are based on Louisiana Coordinate System of 1927, (South Zone).

NOTE: Any lease on this Tract shall contain the following language, to wit: "Should a title dispute arise regarding this leased acreage and litigation ensue, lessee herein agrees to pay the State as billed by the State, any and all legal costs incurred by the State of Louisiana in defending its title to said leased acreage up to a maximum aggregate amount of one hundred fifty thousand and no/100 dollars (\$150,000.00) for all leases in the same area by the same lessee."

NOTE: The above description of the Tract nominated for lease has been provided and corrected, where required, exclusively by the nomination party. Any mineral lease selected from this Tract and awarded by the Louisiana State Mineral Board shall be without warranty of any kind, either express, implied, or statutory, including, but not limited to, the implied warranties of merchantability and fitness for a particular purpose. Should the mineral lease awarded by the Louisiana State Mineral Board be subsequently modified, cancelled or abrogated due to the existence of conflicting leases, operating agreements, private claims or other future obligations or conditions which may affect all or any portion of the leased Tract, it shall not relieve the Lessee of the obligation to pay any bonus due thereon to the Louisiana State Mineral Board, nor shall the Louisiana State Mineral Board be obligated to refund any consideration paid by the Lessor prior to such modification, cancellation, or abrogation, including, but not limited to, bonuses, rentals and royalties.

NOTE: The State of Louisiana does hereby reserve, and this lease shall be subject to, the imprescriptible right of surface use in the nature of a servitude in favor of the Department of Natural Resources, including its Offices and Commissions, for the sole purpose of implementing, constructing, servicing and maintaining approved coastal zone management



and/or restoration projects. Utilization of any and all rights derived under this lease by the mineral lessee, its agents, successors or assigns, shall not interfere with nor hinder the reasonable surface use by the Department of Natural Resources, its Offices or Commissions, as herein above reserved.

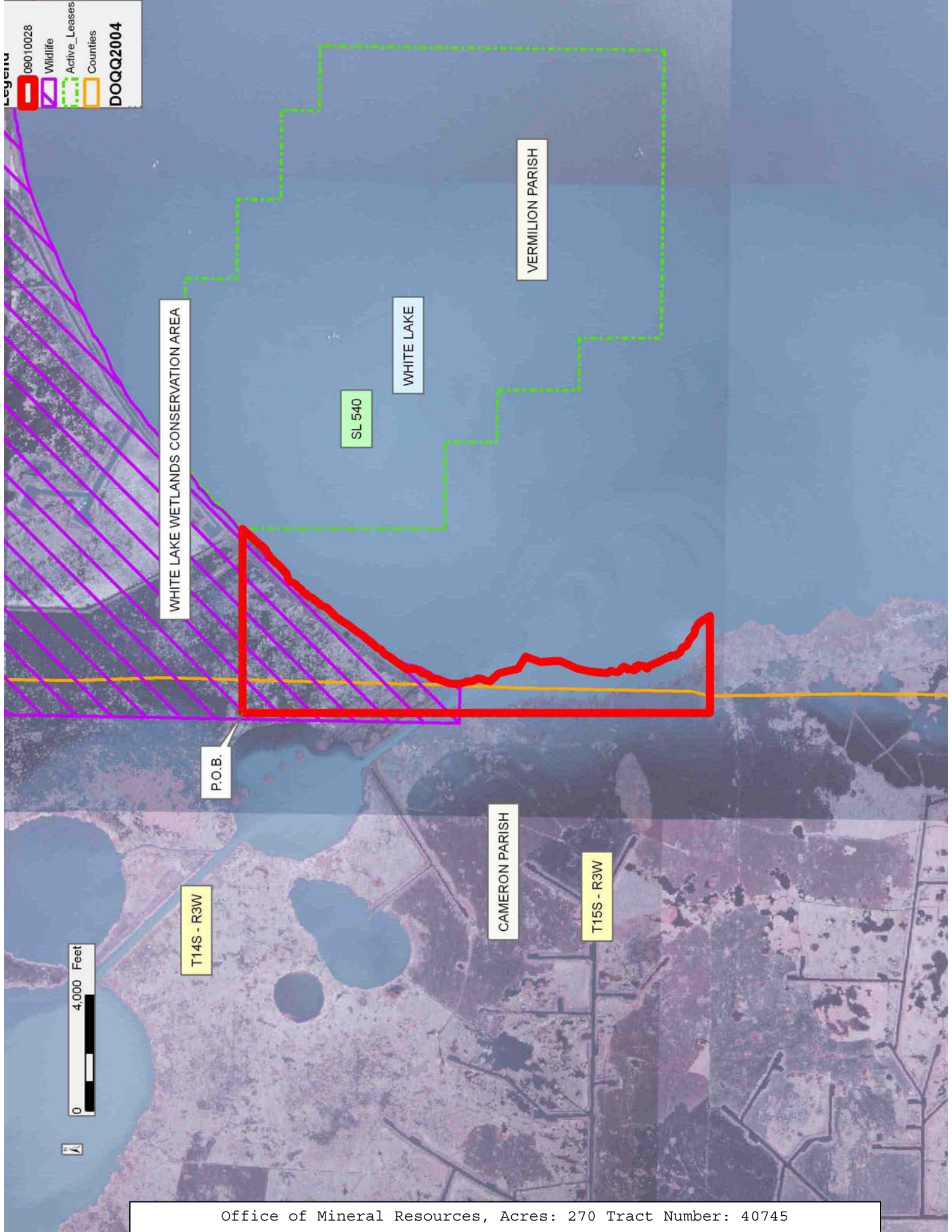
Applicant: JOSEPH M. BENOIT

Bidder	Cash Payment	Price/Acre	Rental	Oil	Gas	Other

**Legend**

-  09010028
-  Wildlife
-  Active\_Leases
-  Counties

**DOQQ2004**



**TRACT 40746 - Cameron Parish, Louisiana**

All of the lands now or formerly constituting the beds and bottoms of all water bodies of every nature and description as to which title is vested in the State of Louisiana, together with all islands arising therein and other lands formed by accretion or by reliction, where allowed by law, excepting tax adjudicated lands, and not presently under mineral lease on January 14, 2009, situated in Cameron Parish, Louisiana, and more particularly described as follows: Beginning at a point having Coordinates of X = 1,453,538.99 and Y = 408,994.63; thence East 5,961.01 feet to a point having Coordinates of X = 1,459,500.00 and Y = 408,994.63; thence South 4,526.26 feet a point having Coordinates of X = 1,459,500.00 and Y = 404,468.37; thence West 5,521.90 feet to a point having Coordinates of X = 1,453,978.10 and Y = 404,468.37; thence South 6,491.31 feet to a point having Coordinates of X = 1,453,978.10 and Y = 397,977.07; thence East 9,409.50 feet to a point having Coordinates of X = 1,463,387.60 and Y = 397,977.07; thence South 7,710.77 feet to a point on the Louisiana Coastline, as decreed by the Supreme Court of the United States, as determined by a Special Master appointed therein, in litigation styled *United States v. State of Louisiana et al No. 9 Original*, in 1975, having Coordinates of X = 1,463,387.60 and Y = 390,266.30; thence Northwesterly on a straight line to a point having Coordinates of X = 1,460,435 and Y = 391,260; thence Northwesterly on a straight line to a point having Coordinates of X = 1,454,105 and Y = 393,050; thence Northwesterly on a straight line to a point having Coordinates of X = 1,453,538.99 and Y = 393,273.96; thence North 15,720.67 feet to the point of beginning, containing approximately **590 acres**, all as more particularly outlined on a plat on file in the Office of Mineral Resources, Department of Natural Resources. All bearings, distances and coordinates are based on Louisiana Coordinate System of 1927, (North or South Zone), where applicable.

NOTE: The above description of the Tract nominated for lease has been provided and corrected, where required, exclusively by the nomination party. Any mineral lease selected from this Tract and awarded by the Louisiana State Mineral Board shall be without warranty of any kind, either express, implied, or statutory, including, but not limited to, the implied warranties of merchantability and fitness for a particular purpose. Should the mineral lease awarded by the Louisiana State Mineral Board be subsequently modified, cancelled or abrogated due to the existence of conflicting leases, operating agreements, private claims or other future obligations or conditions which may affect all or any portion of the leased Tract, it shall not relieve the Lessee of the obligation to pay any bonus due thereon to the Louisiana State Mineral Board, nor shall the Louisiana State Mineral Board be obligated to refund any consideration paid by the Lessor prior to such modification, cancellation, or abrogation, including, but not limited to, bonuses, rentals and royalties.

NOTE: The State of Louisiana does hereby reserve, and this lease shall be subject to, the imprescriptible right of surface use in the nature of a servitude in favor of the Department of Natural Resources, including its



Offices and Commissions, for the sole purpose of implementing, constructing, servicing and maintaining approved coastal zone management and/or restoration projects. Utilization of any and all rights derived under this lease by the mineral lessee, its agents, successors or assigns, shall not interfere with nor hinder the reasonable surface use by the Department of Natural Resources, its Offices or Commissions, as herein above reserved.

Applicant: CYPRESS ENERGY CORPORATION

Bidder	Cash Payment	Price/Acre	Rental	Oil	Gas	Other

