

TRACT 40732 - Portion of Block 27, Chandeleur Area, St. Bernard Parish, Louisiana

The beds and bottoms of all water bodies belonging to the State of Louisiana located in Block 27, Chandeleur Area, together with any present lands formed by accretion to the shoreline or islands formed therein, located in St. Bernard Parish, Louisiana, owned by and not presently under mineral lease as of January 14, 2009, from the State of Louisiana, the geographical area of which is more fully described as follows: Beginning at the Northwest corner of Block 27, Chandeleur Area, having Coordinates of X = 2,797,608.05 and Y = 410,846.10; thence East 8,578.32 feet along the North line of said Block 27 to a point on the Three Mile Line, as decreed by the Supreme Court of the United States, as determined by a Special Master appointed therein, in litigation styled *United States v. State of Louisiana et al No. 9 Original*, in 1975, having Coordinates of X = 2,806,186.37 and Y = 410,846.10; thence along the said Three Mile Line the following courses and distances: Southwesterly on a straight line to a point having Coordinates of X = 2,805,322 and Y = 408,452, Southwesterly on an arc having a Radius of 18,240.60 feet and a center having Coordinates of X = 2,788,165 and Y = 414,646 to a point having Coordinates of X = 2,805,227 and Y = 408,196, Southwesterly on a straight line to a point having Coordinates of X = 2,803,786 and Y = 404,384, Southwesterly on an arc having a Radius of 18,240.60 feet and a center having Coordinates of X = 2,786,724 and Y = 410,834 to a point having Coordinates of X = 2,803,319 and Y = 403,263 and Southwesterly on a straight line to a point on the South line of said Block 27 having Coordinates of X = 2,800,045.75 and Y = 396,088.05; thence West 2,437.70 feet along the South line of said Block 27 to its Southwest corner having Coordinates of X = 2,797,608.05 and Y = 396,088.05; thence North 14,758.05 feet along the West line of said Block 27 to the point of beginning, containing approximately **1,920.74 acres, LESS AND EXCEPT** that portion thereof, if any, lying seaward of the line three nautical miles from the coast line of Louisiana, as said three mile line has been decreed by the Supreme Court of the United States, as determined by a Special Master appointed therein, in litigation styled **United States v. State of Louisiana et al No. 9 Original**, in 1975, all as more particularly outlined on a plat in the Office of Mineral Resources, Department of Natural Resources. All bearings, distances and coordinates are based on the Louisiana Coordinate System of 1927, (South Zone).

NOTE: The above description of the Tract nominated for lease has been provided and corrected, where required, exclusively by the nomination party. Any mineral lease selected from this Tract and awarded by the Louisiana State Mineral Board shall be without warranty of any kind, either express, implied, or statutory, including, but not limited to, the implied warranties of merchantability and fitness for a particular purpose. Should the mineral lease awarded by the Louisiana State Mineral Board be subsequently modified, cancelled or abrogated due to the existence of conflicting leases, operating agreements, private claims or other future obligations or conditions which may affect all or any portion

of the leased Tract, it shall not relieve the Lessee of the obligation to pay any bonus due thereon to the Louisiana State Mineral Board, nor shall the Louisiana State Mineral Board be obligated to refund any consideration paid by the Lessor prior to such modification, cancellation, or abrogation, including, but not limited to, bonuses, rentals and royalties.

NOTE: The Office of Mineral Resources will require a minimum bonus of \$230 per acre and a minimum royalty of 23%.

NOTE: The State of Louisiana does hereby reserve, and this lease shall be subject to, the imprescriptible right of surface use in the nature of a servitude in favor of the Department of Natural Resources, including its Offices and Commissions, for the sole purpose of implementing, constructing, servicing and maintaining approved coastal zone management and/or restoration projects. Utilization of any and all rights derived under this lease by the mineral lessee, its agents, successors or assigns, shall not interfere with nor hinder the reasonable surface use by the Department of Natural Resources, its Offices or Commissions, as herein above reserved.

Applicant: THEOPHILUS OIL, GAS & LAND SERVICES, LLC

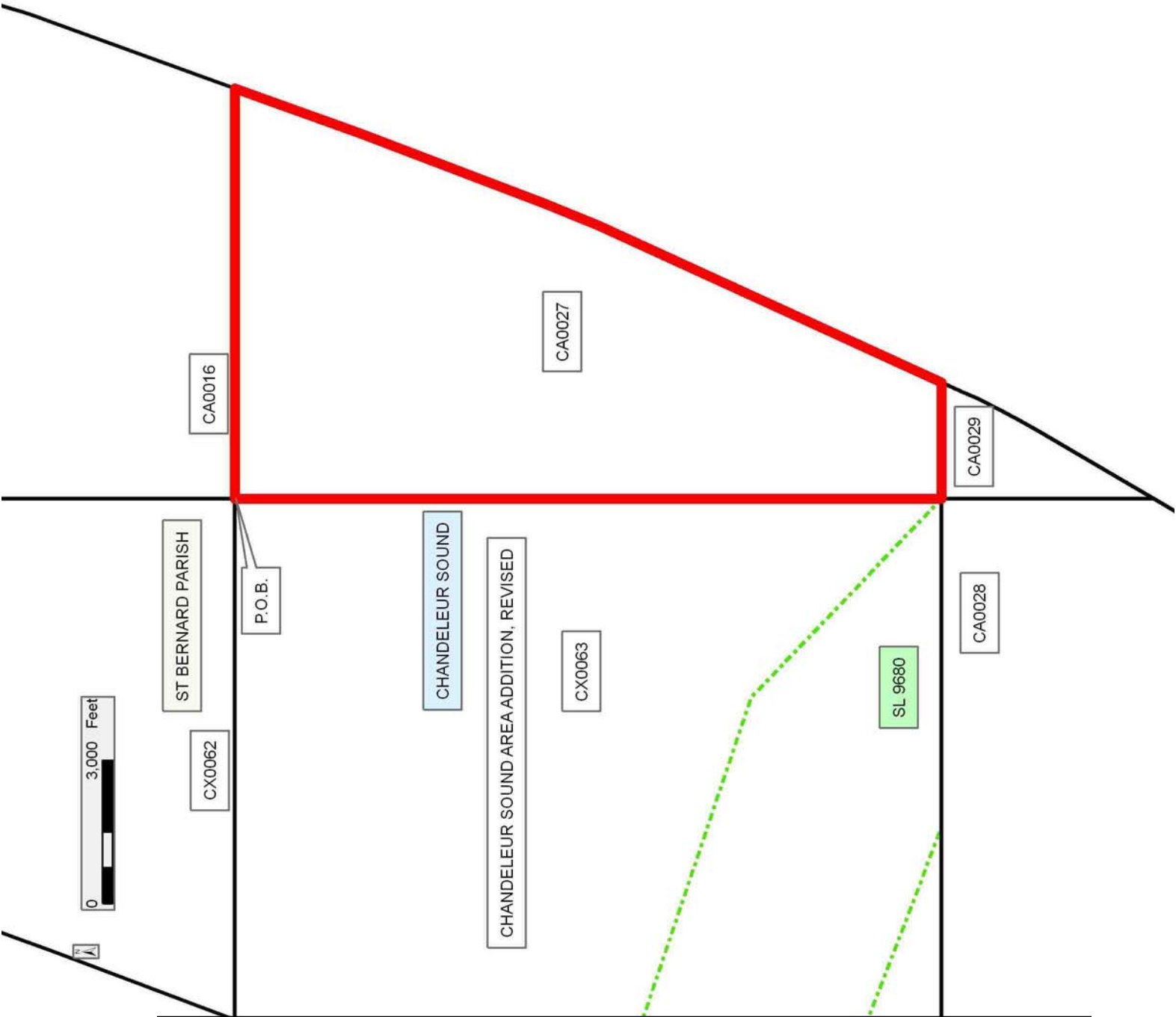
Bidder	Cash Payment	Price/ Acre	Rental	Oil	Gas	Other

Legend

09010058

Blocks

Active_Leases



TRACT 40733 - Portion of Block 1, East Cameron Area, Revised, and Block 32, West Cameron Area, Revised, Cameron Parish, Louisiana

The beds and bottoms of all water bodies belonging to the State of Louisiana located in Block 1, East Cameron Area, Revised, and Block 32, West Cameron Area, Revised, together with any present lands formed by accretion to the shoreline or islands formed therein, located in Cameron Parish, Louisiana, owned by and not presently under mineral lease as of January 14, 2009, from the State of Louisiana, the geographical area of which is more fully described as follows: Beginning at a point having Coordinates of X = 1,461,841.96 and Y = 379,032.18; thence North 25 degrees 54 minutes 06 seconds West 15,244.44 feet to a point of intersection with the Louisiana Coastline, as decreed by the Supreme Court of the United States, as determined by a Special Master appointed therein, in litigation styled *United States v. State of Louisiana et al No. 9 Original*, in 1975, having Coordinates of X = 1,455,182.74 and Y = 392,745.23; thence Southeasterly on a straight line to a point having Coordinates of X = 1,460,435 and Y = 391,260; thence Southeasterly on a straight line to a point having Coordinates of X = 1,467,685 and Y = 388,820; thence Southeasterly on a straight line to a point having Coordinates of X = 1,470,467.28 and Y = 387,700.83; thence South approximately 82 feet to the Northwest corner of State Lease No. 1170, as amended having Coordinates of X = 1,470,467.28 and Y = 387,618.78; thence along the boundary of said State Lease No. 1170 the following courses: Southwesterly to a point having Coordinates of X = 1,469,733.15 and Y = 386,316.86, Southwesterly to a point having Coordinates of X = 1,468,833.61 and Y = 383,296.02, Southwesterly to a point having Coordinates of X = 1,468,108.14 and Y = 382,484.84, Southwesterly to a point having Coordinates of X = 1,467,349.89 and Y = 381,100.49 and Southwesterly to a point being the Northeast corner of Block 33, West Cameron Area, Revised, having Coordinates of X = 1,465,241.95 and Y = 379,032.19; thence West 3,399.99 feet along said Block 33 to the point of beginning, **LESS AND EXCEPT** that portion, if any, of State Lease No. 1170, as amended, which may lie within the above described tract, containing approximately **2,494 acres**, all as more particularly outlined on a plat on file in the Office of Mineral Resources, Department of Natural Resources. All bearings, distances and coordinates are based on Louisiana Coordinate System of 1927, (North or South Zone).

NOTE: The above description of the Tract nominated for lease has been provided and corrected, where required, exclusively by the nomination party. Any mineral lease selected from this Tract and awarded by the Louisiana State Mineral Board shall be without warranty of any kind, either express, implied, or statutory, including, but not limited to, the implied warranties of merchantability and fitness for a particular purpose. Should the mineral lease awarded by the Louisiana State Mineral Board be subsequently modified, cancelled or abrogated due to the existence of conflicting leases, operating agreements, private claims or other future obligations or conditions which may affect all or any portion of the leased Tract, it shall not relieve the Lessee of the obligation to

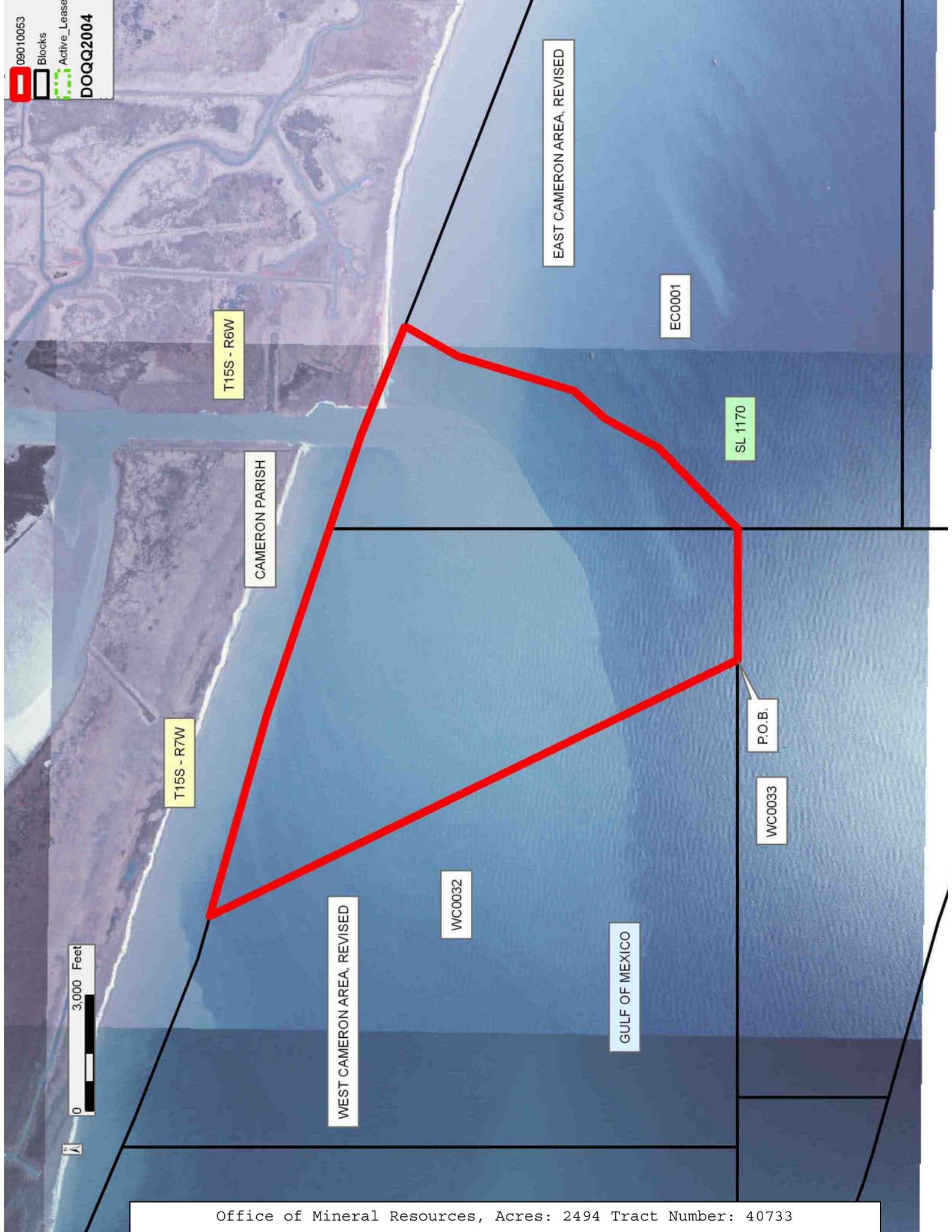
pay any bonus due thereon to the Louisiana State Mineral Board, nor shall the Louisiana State Mineral Board be obligated to refund any consideration paid by the Lessor prior to such modification, cancellation, or abrogation, including, but not limited to, bonuses, rentals and royalties.

NOTE: The State of Louisiana does hereby reserve, and this lease shall be subject to, the imprescriptible right of surface use in the nature of a servitude in favor of the Department of Natural Resources, including its Offices and Commissions, for the sole purpose of implementing, constructing, servicing and maintaining approved coastal zone management and/or restoration projects. Utilization of any and all rights derived under this lease by the mineral lessee, its agents, successors or assigns, shall not interfere with nor hinder the reasonable surface use by the Department of Natural Resources, its Offices or Commissions, as herein above reserved.

Applicant: CYPRESS ENERGY CORPORATION

Bidder	Cash Payment	Price/ Acre	Rental	Oil	Gas	Other

09010053
Blocks
Active_Lease
DOQQ2004



TRACT 40734 - Portion of Blocks 10, 11, 12, and 9, Vermilion Area, Revised, Vermilion Parish, Louisiana

The beds and bottoms of all water bodies belonging to the State of Louisiana located in Blocks 10, 11, 12, and 9, Vermilion Area, Revised, together with any present lands formed by accretion to the shoreline or islands formed therein, located in Vermilion Parish, Louisiana, owned by and not presently under mineral lease as of January 14, 2009, from the State of Louisiana, the geographical area of which is more fully described as follows: Beginning at a point having Coordinates of X = 1,723,707.00 and Y = 312,743.00; thence West 7,302.00 feet a point having Coordinates of X = 1,716,405.00 and Y = 312,743.00; thence North 6,837.00 feet to the Southeast corner of State Lease No. 18179 having Coordinates of X = 1,716,405.00 and Y = 319,580.00; thence North 4,288.35 feet along the East boundary of said State Lease No. 18179, also being point on the Louisiana Coastline, as decreed by the Supreme Court of the United States, as determined by a Special Master appointed therein, in litigation styled *United States v. State of Louisiana et al No. 9 Original*, in 1975, having Coordinates of X = 1,716,405.00 and Y = 323,868.35; thence along the said Coastline the following courses: Northeasterly on a straight line to a point having Coordinates of X = 1,717,114 and Y = 324,303, Northeasterly on a straight line to a point having Coordinates of X = 1,720,140 and Y = 326,402, Northeasterly on a straight line to a point having Coordinates of X = 1,721,682 and Y = 327,214, Northeasterly on a straight line to a point having Coordinates of X = 1,722,884 and Y = 327,774, Northeasterly on a straight line to a point having Coordinates of X = 1,723,707.00 and Y = 328,022.38; thence South 15,279.38 feet to the point of beginning, containing approximately **2,251.84 acres**, all as more particularly outlined on a plat on file in the Office of Mineral Resources, Department of Natural Resources. All bearings, distances and coordinates are based on Louisiana Coordinate System of 1927, (North or South Zone).

NOTE: The above description of the Tract nominated for lease has been provided and corrected, where required, exclusively by the nomination party. Any mineral lease selected from this Tract and awarded by the Louisiana State Mineral Board shall be without warranty of any kind, either express, implied, or statutory, including, but not limited to, the implied warranties of merchantability and fitness for a particular purpose. Should the mineral lease awarded by the Louisiana State Mineral Board be subsequently modified, cancelled or abrogated due to the existence of conflicting leases, operating agreements, private claims or other future obligations or conditions which may affect all or any portion of the leased Tract, it shall not relieve the Lessee of the obligation to pay any bonus due thereon to the Louisiana State Mineral Board, nor shall the Louisiana State Mineral Board be obligated to refund any consideration paid by the Lessor prior to such modification, cancellation, or abrogation, including, but not limited to, bonuses, rentals and royalties.

NOTE: The State of Louisiana does hereby reserve, and this lease shall be subject to, the imprescriptible right of surface use in the nature of a

servitude in favor of the Department of Natural Resources, including its Offices and Commissions, for the sole purpose of implementing, constructing, servicing and maintaining approved coastal zone management and/or restoration projects. Utilization of any and all rights derived under this lease by the mineral lessee, its agents, successors or assigns, shall not interfere with nor hinder the reasonable surface use by the Department of Natural Resources, its Offices or Commissions, as herein above reserved.

Applicant: CHAMPION ENERGY, L.L.C.

Bidder	Cash Payment	Price/ Acre	Rental	Oil	Gas	Other

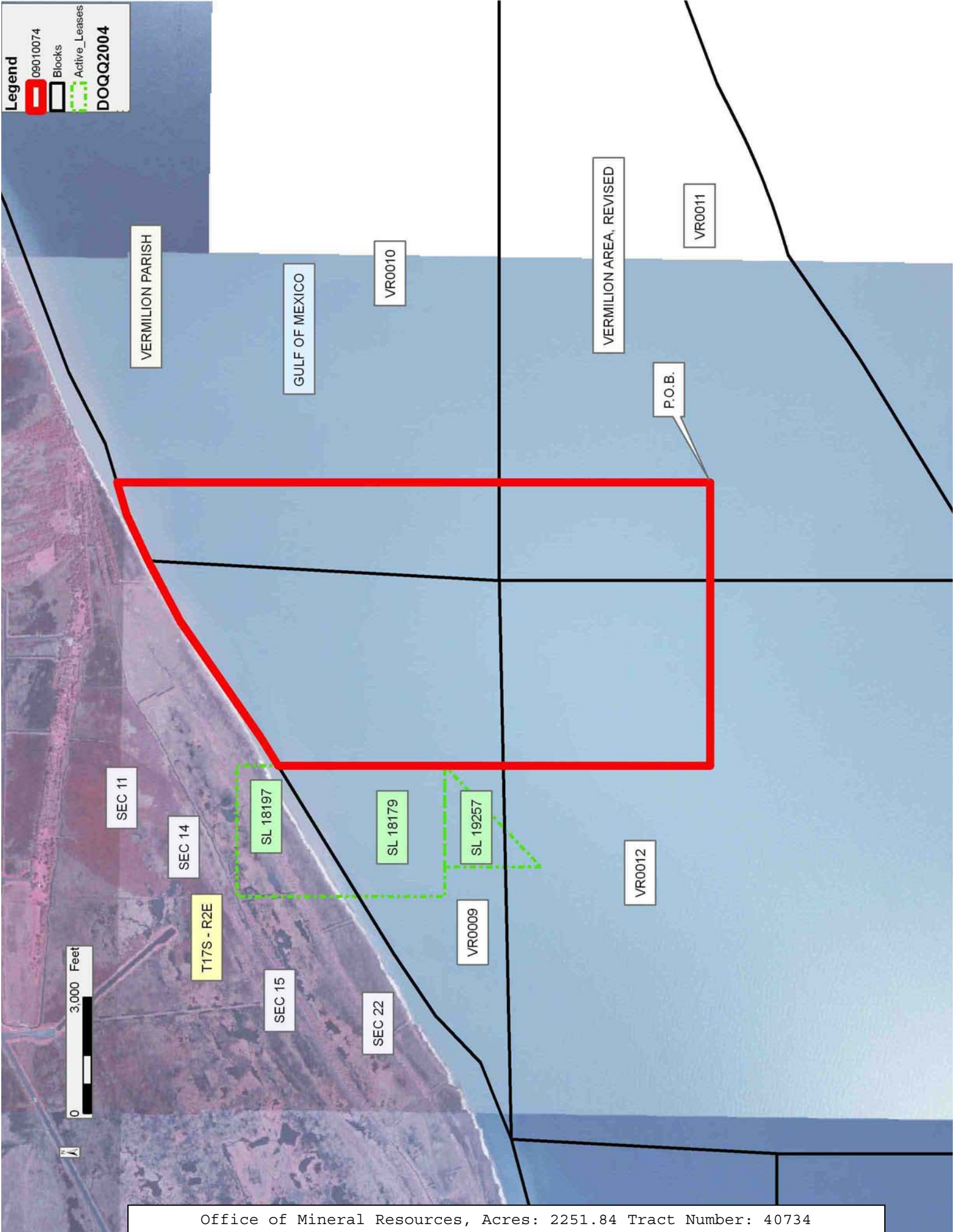
Legend

09010074

Blocks

Active_Leases

DOQQ2004



TRACT 40735 - Portion of Blocks 12, 8, and 9, Vermilion Area, Revised, Vermilion Parish, Louisiana

The beds and bottoms of all water bodies belonging to the State of Louisiana located in Blocks 12, 8, and 9, Vermilion Area, Revised, together with any present lands formed by accretion to the shoreline or islands formed therein, located in Vermilion Parish, Louisiana, owned by and not presently under mineral lease as of January 14, 2009, from the State of Louisiana, the geographical area of which is more fully described as follows: Beginning at a point within Block 9, Vermilion Area Revised also being the Easternmost point of State Lease No. 19257 having Coordinates of X = 1,716,405.00 and Y = 319,580.00; thence South 6,837.00 feet to a point within Block 12, Vermilion Area Revised having Coordinates of X = 1,716,405.00 and Y = 312,743.00; thence West 14,452.00 feet to a point within Block 8, Vermilion Area Revised having Coordinates of X = 1,701,953.00 and Y = 312,743.00; thence North 3,909.56 feet to a point on the Louisiana Coastline, as decreed by the Supreme Court of the United States, as determined by a Special Master appointed therein, in litigation styled *United States v. State of Louisiana et al No. 9 Original*, in 1975, having Coordinates of X = 1,701,953.00 and Y = 316,652.56; thence along the said Coastline the following courses: Northeasterly on a straight line to a point having Coordinates of X = 1,703,080 and Y = 316,885; Northeasterly on a straight line to a point having Coordinates of X = 1,706,790 and Y = 317,870 and Northeasterly on a straight line to the Northwest corner of State Lease No. 19258 having Coordinates of X = 1,708,035.00 and Y = 318,370.91; thence along the boundary of said State Lease No. 19258 the following courses: South 1,990.91 feet, East 5,000.00 feet and North 46 degrees 28 minutes 56 seconds East 1,045.82 feet to its Southeast corner and the Southernmost corner of State Lease No. 19257 having Coordinates of X = 1,713,793.39 and Y = 317,100.13; thence North 46 degrees 28 minutes 56 seconds East 3,601.42 feet along the boundary of said State Lease No. 19257 to the point of beginning, containing approximately **1,475.20 acres**, all as more particularly outlined on a plat on file in the Office of Mineral Resources, Department of Natural Resources. All bearings, distances and coordinates are based on Louisiana Coordinate System of 1927, (North or South Zone).

NOTE: The above description of the Tract nominated for lease has been provided and corrected, where required, exclusively by the nomination party. Any mineral lease selected from this Tract and awarded by the Louisiana State Mineral Board shall be without warranty of any kind, either express, implied, or statutory, including, but not limited to, the implied warranties of merchantability and fitness for a particular purpose. Should the mineral lease awarded by the Louisiana State Mineral Board be subsequently modified, cancelled or abrogated due to the existence of conflicting leases, operating agreements, private claims or other future obligations or conditions which may affect all or any portion of the leased Tract, it shall not relieve the Lessee of the obligation to pay any bonus due thereon to the Louisiana State Mineral Board, nor shall the Louisiana State Mineral Board be obligated to refund any consideration

paid by the Lessor prior to such modification, cancellation, or abrogation, including, but not limited to, bonuses, rentals and royalties.

NOTE: The State of Louisiana does hereby reserve, and this lease shall be subject to, the imprescriptible right of surface use in the nature of a servitude in favor of the Department of Natural Resources, including its Offices and Commissions, for the sole purpose of implementing, constructing, servicing and maintaining approved coastal zone management and/or restoration projects. Utilization of any and all rights derived under this lease by the mineral lessee, its agents, successors or assigns, shall not interfere with nor hinder the reasonable surface use by the Department of Natural Resources, its Offices or Commissions, as herein above reserved.

Applicant: CHAMPION ENERGY, L.L.C.

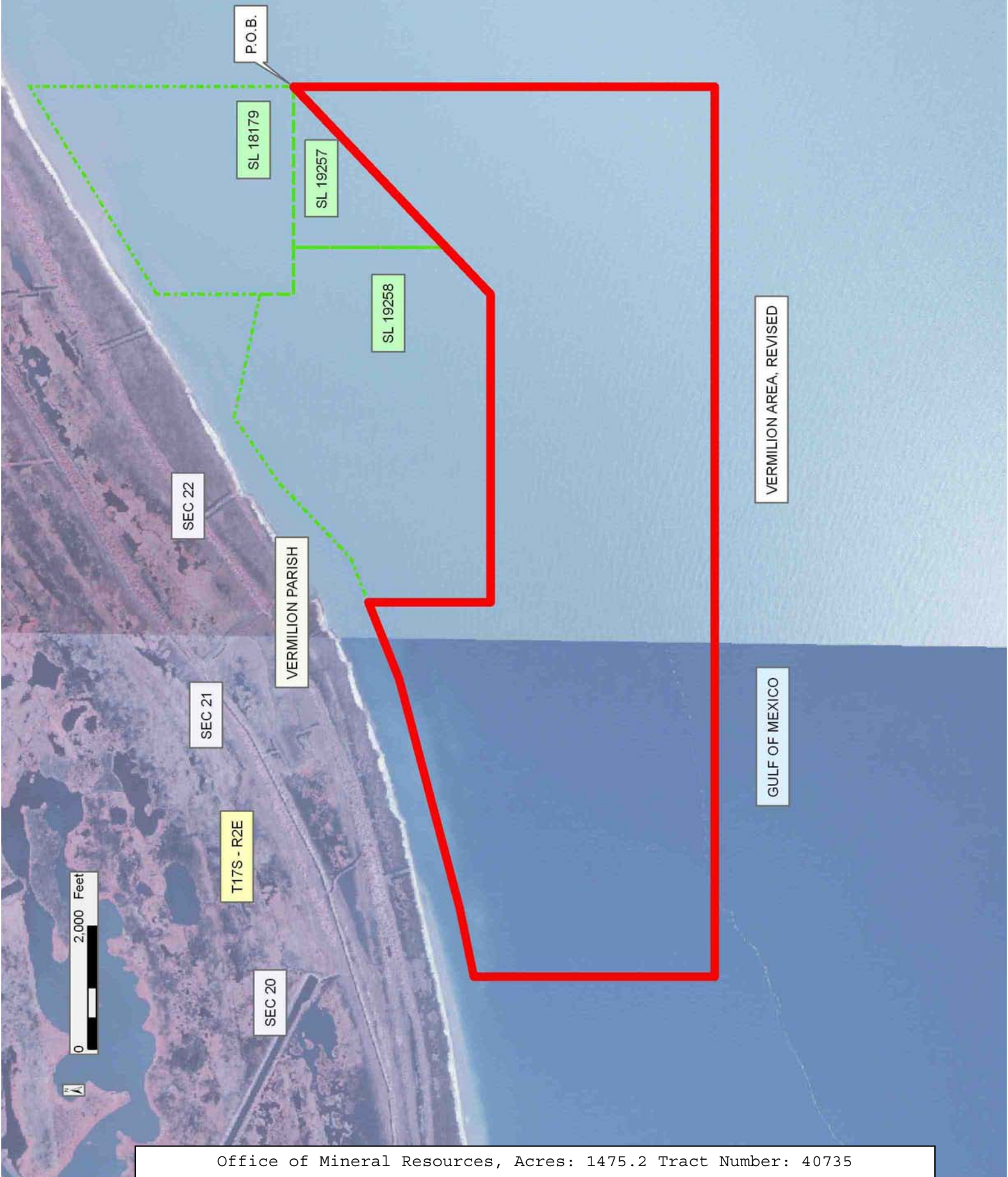
Bidder	Cash Payment	Price/ Acre	Rental	Oil	Gas	Other

Legend

09010072

Active_Leases

DOQQ2004



TRACT 40736 - Portion of Block 8, Vermilion Area, Revised, Vermilion Parish, Louisiana

The beds and bottoms of all water bodies belonging to the State of Louisiana located in Block 8, Vermilion Area, Revised, together with any present lands formed by accretion to the shoreline or islands formed therein, located in Vermilion Parish, Louisiana, owned by and not presently under mineral lease as of January 14, 2009, from the State of Louisiana, the geographical area of which is more fully described as follows: Beginning at a point within Block 8, Vermilion Area Revised also being a point on the Three Mile line as been decreed by the Supreme Court of the United States, as determined by a Special Master appointed therein, in litigation styled United States v. State of Louisiana et al No. 9 Original, in 1975, having Coordinates of X = 1,696,359 and Y = 315,965; thence along said Coastline the following courses: Northeasterly on a straight line to a point having Coordinates of X = 1,700,680 and Y = 316,390 and Northeasterly on a straight line to a point having Coordinates of X = 1,701,953.00 and Y = 316,652.56; thence South 3,909.56 feet to a point having Coordinates of X = 1,701,953.00 and Y = 312,743.00; thence West 5,594.00 feet to a point having Coordinates of X = 1,696,359.00 and Y = 312,743.00; thence North 3,222.00 feet to the point of beginning, containing approximately **451.11 acres**, all as more particularly outlined on a plat on file in the Office of Mineral Resources, Department of Natural Resources. All bearings, distances and coordinates are based on Louisiana Coordinate System of 1927, (North or South Zone).

NOTE: The above description of the Tract nominated for lease has been provided and corrected, where required, exclusively by the nomination party. Any mineral lease selected from this Tract and awarded by the Louisiana State Mineral Board shall be without warranty of any kind, either express, implied, or statutory, including, but not limited to, the implied warranties of merchantability and fitness for a particular purpose. Should the mineral lease awarded by the Louisiana State Mineral Board be subsequently modified, cancelled or abrogated due to the existence of conflicting leases, operating agreements, private claims or other future obligations or conditions which may affect all or any portion of the leased Tract, it shall not relieve the Lessee of the obligation to pay any bonus due thereon to the Louisiana State Mineral Board, nor shall the Louisiana State Mineral Board be obligated to refund any consideration paid by the Lessor prior to such modification, cancellation, or abrogation, including, but not limited to, bonuses, rentals and royalties.

NOTE: The State of Louisiana does hereby reserve, and this lease shall be subject to, the imprescriptible right of surface use in the nature of a servitude in favor of the Department of Natural Resources, including its Offices and Commissions, for the sole purpose of implementing, constructing, servicing and maintaining approved coastal zone management and/or restoration projects. Utilization of any and all rights derived under this lease by the mineral lessee, its agents, successors or assigns, shall not interfere with nor hinder the reasonable surface use by the

Department of Natural Resources, its Offices or Commissions, as herein above reserved.

Applicant: CHAMPION ENERGY, L.L.C.

Bidder	Cash Payment	Price/ Acre	Rental	Oil	Gas	Other

Legend

09010071

Blocks

Tracts

DOQQ2004

