

TRACT 39598 - Sabine Parish, Louisiana

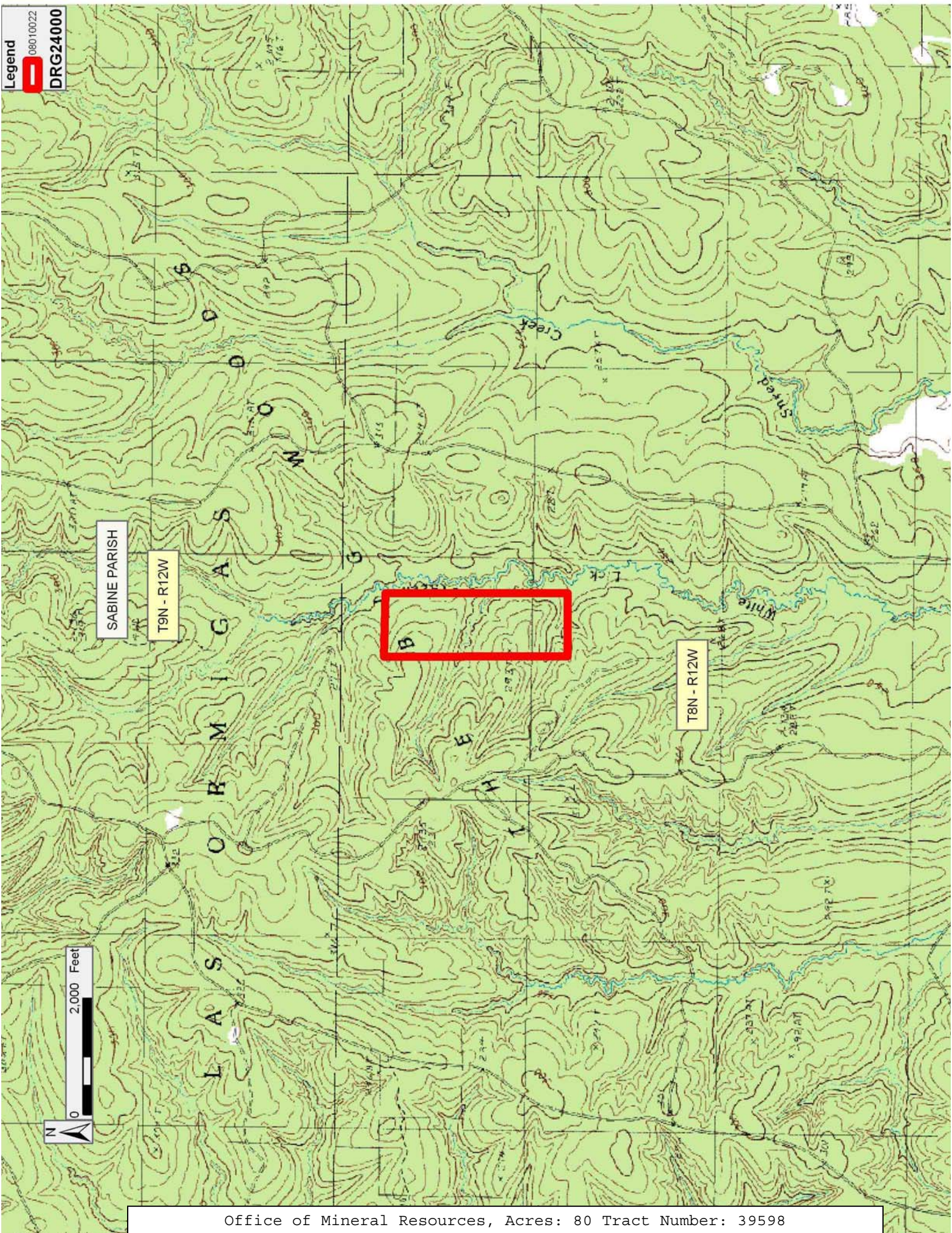
All of the mineral rights only under land adjudicated to and acquired by the State of Louisiana in and through a proper tax sale, and subsequently alienated by the State which retained the mineral rights thereto, and which is not under valid mineral lease from the State of Louisiana on January 9, 2008, situated in Sabine Parish, Louisiana, and being more fully described as follows: The West One Half of the Northwest Quarter (West 1/2 of NW/4) of Section 2, Township 8 North, Range 12 West, Sabine Parish, Louisiana, being the same lands adjudicated to the State in the name of Neil Porter for the nonpayment of taxes for the year 1932, and subsequently sold to P.T. Tatum, under File No. 101439, containing approximately **80 acres**, as shown outlined in red on the attached plat, all as more particularly outlined on a plat on file in the Office of Mineral Resources, Department of Natural Resources. All bearings, distances and coordinates are based on Louisiana Coordinate System of 1927, (North or South Zone), where applicable.

NOTE: The above description of the Tract nominated for lease has been provided and corrected, where required, exclusively by the nomination party. Any mineral lease selected from this Tract and awarded by the Louisiana State Mineral Board shall be without warranty of any kind, either express, implied, or statutory, including, but not limited to, the implied warranties of merchantability and fitness for a particular purpose. Should the mineral lease awarded by the Louisiana State Mineral Board be subsequently modified, cancelled or abrogated due to the existence of conflicting leases, operating agreements, private claims or other future obligations or conditions which may affect all or any portion of the leased Tract, it shall not relieve the Lessee of the obligation to pay any bonus due thereon to the Louisiana State Mineral Board, nor shall the Louisiana State Mineral Board be obligated to refund any consideration paid by the Lessor prior to such modification, cancellation, or abrogation, including, but not limited to, bonuses, rentals and royalties.

NOTE: The State of Louisiana owns only the mineral rights on this tract; the surface and other rights of ownership have been sold or patented out by the State. Because the surface is not owned by the State, no surface activity on this tract undertaken in conjunction with any operations under any mineral lease given on this tract will be allowed without prior approval of the surface owner and further, no such right of surface use shall be deemed to have been given as part of any mineral lease by the State of Louisiana on this tract.

Bidder	Cash Payment	Price/Acre	Rental	Oil	Gas	Other

Applicant: AUDUBON OIL AND GAS CORPORATION



TRACT 39599 - Sabine Parish, Louisiana

All of the mineral rights only under land adjudicated to and acquired by the State of Louisiana in and through a proper tax sale, and subsequently alienated by the State which retained the mineral rights thereto, and which is not under valid mineral lease from the State of Louisiana on January 9, 2008, situated in Sabine Parish, Louisiana, and being more fully described as follows: The Northwest Quarter (NW/4) of Section 6, Township 8 North, Range 11 West, Sabine Parish, Louisiana, being the same lands adjudicated to the State in the names of J.L. Smith and Loran Prevo for the nonpayment of taxes for the year 1931, and subsequently sold to Sabine Lumber Company, under File No. 123277, containing approximately **177 acres**, as shown outlined in red on the attached plat, all as more particularly outlined on a plat on file in the Office of Mineral Resources, Department of Natural Resources. All bearings, distances and coordinates are based on Louisiana Coordinate System of 1927, (North or South Zone), where applicable.

NOTE: The above description of the Tract nominated for lease has been provided and corrected, where required, exclusively by the nomination party. Any mineral lease selected from this Tract and awarded by the Louisiana State Mineral Board shall be without warranty of any kind, either express, implied, or statutory, including, but not limited to, the implied warranties of merchantability and fitness for a particular purpose. Should the mineral lease awarded by the Louisiana State Mineral Board be subsequently modified, cancelled or abrogated due to the existence of conflicting leases, operating agreements, private claims or other future obligations or conditions which may affect all or any portion of the leased Tract, it shall not relieve the Lessee of the obligation to pay any bonus due thereon to the Louisiana State Mineral Board, nor shall the Louisiana State Mineral Board be obligated to refund any consideration paid by the Lessor prior to such modification, cancellation, or abrogation, including, but not limited to, bonuses, rentals and royalties.

NOTE: The State of Louisiana owns only the mineral rights on this tract; the surface and other rights of ownership have been sold or patented out by the State. Because the surface is not owned by the State, no surface activity on this tract undertaken in conjunction with any operations under any mineral lease given on this tract will be allowed without prior approval of the surface owner and further, no such right of surface use shall be deemed to have been given as part of any mineral lease by the State of Louisiana on this tract.

Applicant: AUDUBON OIL AND GAS CORPORATION

Bidder	Cash Payment	Price/Acre	Rental	Oil	Gas	Other

