

TRACT 39564 - Portion of Blocks 48, and 52, Main Pass Area, Revised, Plaquemines Parish, Louisiana

All of the lands now or formerly constituting the beds and bottoms of all water bodies of every nature and description as to which title is vested in the State of Louisiana, together with all islands arising therein and other lands formed by accretion or by reliction, where allowed by law, excepting tax adjudicated lands, and not presently under mineral lease on January 9, 2008, situated in Plaquemines Parish, Louisiana, and more particularly described as follows: Beginning at a point on the Eastern boundary of the Price Case (Tract C-2) having Coordinates of X = 2,642,132.91 and Y = 262,986.85; thence North 89 degrees 59 seconds 56 seconds East 7,146.12 feet to a point having Coordinates of X = 2,649,279.03 and Y = 262,986.98; thence South 38 degrees 22 minutes 09 seconds East 703.86 feet to a point having Coordinates of X = 2,649,715.93 and Y = 262,435.14; thence North 88 degrees 25 minutes 24 seconds East 309.19 feet to a point having Coordinates of X = 2,650,025.00 and Y = 262,443.65; thence South 1,620.17 feet to a point on the East boundary of State Lease No. 18579 having Coordinates of X = 2,650,025.00 and Y = 260,823.48; thence along the boundary of said State Lease No. 18579 the following courses: North 21 degrees 11 minutes 44 seconds West 1,468.68 feet; South 89 degrees 36 minutes 31 seconds West 3,148.07 feet and South 03 degrees 27 minutes 48 seconds East 1,870.52 feet to its Southwest corner having Coordinates of X = 2,646,459.00 and Y = 260,304.20; thence South 88 degrees 35 minutes 36 seconds West 2,602.68 feet to a point on the Eastern boundary of said Price Case (Tract C-2) having Coordinates of X = 2,643,857.10 and Y = 260,240.31; thence along the boundary of said Price Case (Tract C-2) the following courses: North 15 degrees 30 minutes 00 seconds West 1,219.72 feet and North 41 degrees 40 minutes 00 seconds West 2,103.25 feet to the point of beginning, containing approximately **268.53 acres**, all as more particularly outlined on a plat on file in the Office of Mineral Resources, Department of Natural Resources. All bearings, distances and coordinates are based on Louisiana Coordinate System of 1927, (North or South Zone), where applicable.

NOTE: The above description of the Tract nominated for lease has been provided and corrected, where required, exclusively by the nomination party. Any mineral lease selected from this Tract and awarded by the Louisiana State Mineral Board shall be without warranty of any kind, either express, implied, or statutory, including, but not limited to, the implied warranties of merchantability and fitness for a particular purpose. Should the mineral lease awarded by the Louisiana State Mineral Board be subsequently modified, cancelled or abrogated due to the existence of conflicting leases, operating agreements, private claims or other future obligations or conditions which may affect all or any portion of the leased Tract, it shall not relieve the Lessee of the obligation to pay any bonus due thereon to the Louisiana State Mineral Board, nor shall the Louisiana State Mineral Board be obligated to refund any consideration paid by the Lessor prior to such modification, cancellation, or abrogation, including, but not limited to, bonuses, rentals and royalties.

NOTE: The State of Louisiana does hereby reserve, and this lease shall be subject to, the imprescriptible right of surface use in the nature of a servitude in favor of the Department of Natural Resources, including its Offices and Commissions, for the sole purpose of implementing, constructing, servicing and maintaining approved coastal zone management and/or restoration projects. Utilization of any and all rights derived under this lease by the mineral lessee, its agents, successors or assigns, shall not interfere with nor hinder the reasonable surface use by the Department of Natural Resources, its Offices or Commissions, as herein above reserved.

NOTE: The Department of Wildlife and Fisheries has designated certain areas in the coastal waters of the State of Louisiana as Oyster Seed Bed Areas. The exact location of those Seed Bed Areas must be obtained from the Department of Wildlife and Fisheries and any work done under a mineral lease from the State of Louisiana may necessarily be conducted in conformity with the rules and regulations promulgated by the said Department of Wildlife and Fisheries for Oyster Seed Bed Areas.

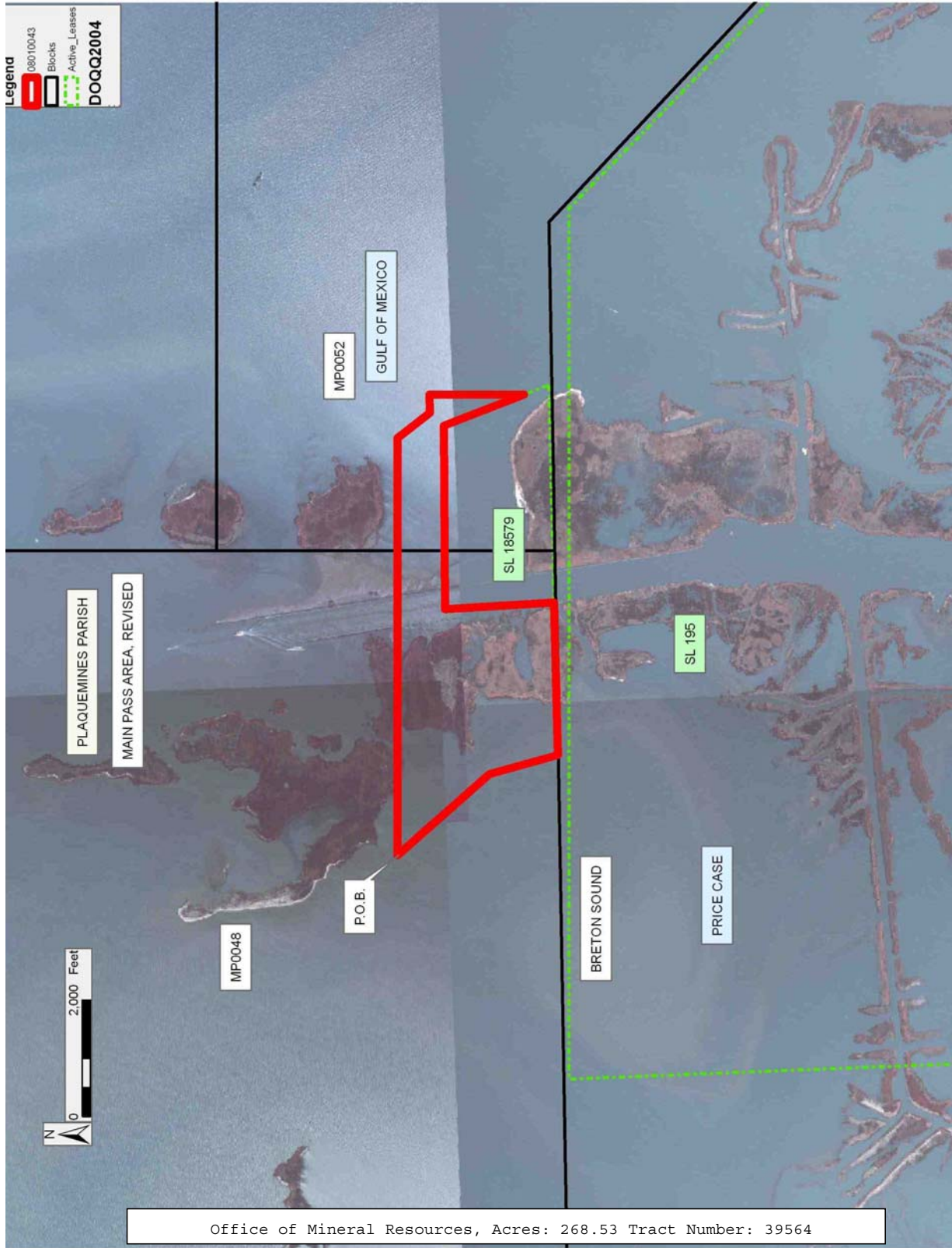
Applicant: HAROLD J. ANDERSON, INC.

Bidder	Cash Payment	Price/Acre	Rental	Oil	Gas	Other

Legend

- 08010043 Blocks
- Active_Leases

DOQQ2004



Office of Mineral Resources, Acres: 268.53 Tract Number: 39564

TRACT 39565 - Plaquemines Parish, Louisiana

All of the lands now or formerly constituting the beds and bottoms of all water bodies of every nature and description as to which title is vested in the State of Louisiana, together with all islands arising therein and other lands formed by accretion or by reliction, where allowed by law, excepting tax adjudicated lands, and not presently under mineral lease on January 9, 2008, situated in Plaquemines Parish, Louisiana, and more particularly described as follows: Beginning at a point having Coordinates of X = 2,616,813.00 and Y = 259,366.00; thence East approximately 1,279 feet to a point on the 40 arpent line in the rear of River lot or Section 2, Township 19 South, Range 18 East, South Eastern Land District, said point also being on the boundary of the Price Case (Tract A-1) having a Coordinate of Y = 259,366.00; thence Southeasterly along the boundary of said Price Case (Tract A-1) and along said arpent line along the River lots or Sections 2, 3, 4 to the Northwest corner of Section 5, also being the Northwest corner of the Price Case (Tract B-3); thence along the boundary of said Price Case (Tract B-3) the following: Southwesterly, Southeasterly and Northeasterly to its Northeast corner, also being the Northwest corner of Section 6 being a point on the boundary of said Price Case (Tract A-1); thence Southeasterly along the boundary of said Price Case (Tract A-1) and along said arpent line along the River lots or Sections 6, and 7, to the Northwest corner of Section 8, also being the Northwest corner of the Price Case (Tract B-2); thence along the boundary of said Price Case (Tract B-2) the following: Southwesterly approximately 820 feet along the West line of said Section 8 to a point; South 52 degrees 00 minutes 00 seconds East to a point on the East line of said Section 8; and Northeasterly approximately 670 feet along the East line of said Section 8 to its Northeast corner, also being the Northwest corner of Section 9 being a point on the boundary of said Price Case (Tract A-1); thence Southeasterly along the boundary of said Price Case (Tract A-1) and along said arpent line along the River lots or Sections 9, 10, 11, 12, 13, 14, 15, 16 and 17 to the Southernmost point of said Price Case (Tract A-1); thence along the Eastern boundary of said Price Case (Tract A-1) the following courses: North 02 degrees 08 minutes 27 seconds West approximately 553 feet; North 87 degrees 51 minutes 33 seconds East 1,320.00 feet; North 02 degrees 08 minutes 27 seconds West 1,320.00 feet and North 87 degrees 51 minutes 33 seconds East approximately 1,258 feet to a point on the boundary of State Lease No. 195, as amended; thence Southerly along the meanders of the boundary of said State Lease No. 195 to the point of intersection with an East-West line having a Coordinate of Y = 247,307.00; thence West approximately 13,506 feet along said East-West line to a point having Coordinates of X = 2,616,813.00 and Y = 247,307.00; thence North 12,059.00 feet to the point of beginning, **LESS AND EXCEPT** that portion, if any, of the Price Case that may lie within the above described tract, **ALSO LESS AND EXCEPT** that portion, if any, of State Lease No. 195, as amended, that may lie within the above described tract, containing approximately **866 acres**, all as more particularly outlined on a plat on file in the Office of Mineral Resources, Department of Natural

Deleted: , 5,
Deleted: ,
Deleted: ,

Deleted: 8,

Resources. All bearings, distances and coordinates are based on Louisiana Coordinate System of 1927, (North or South Zone), where applicable.

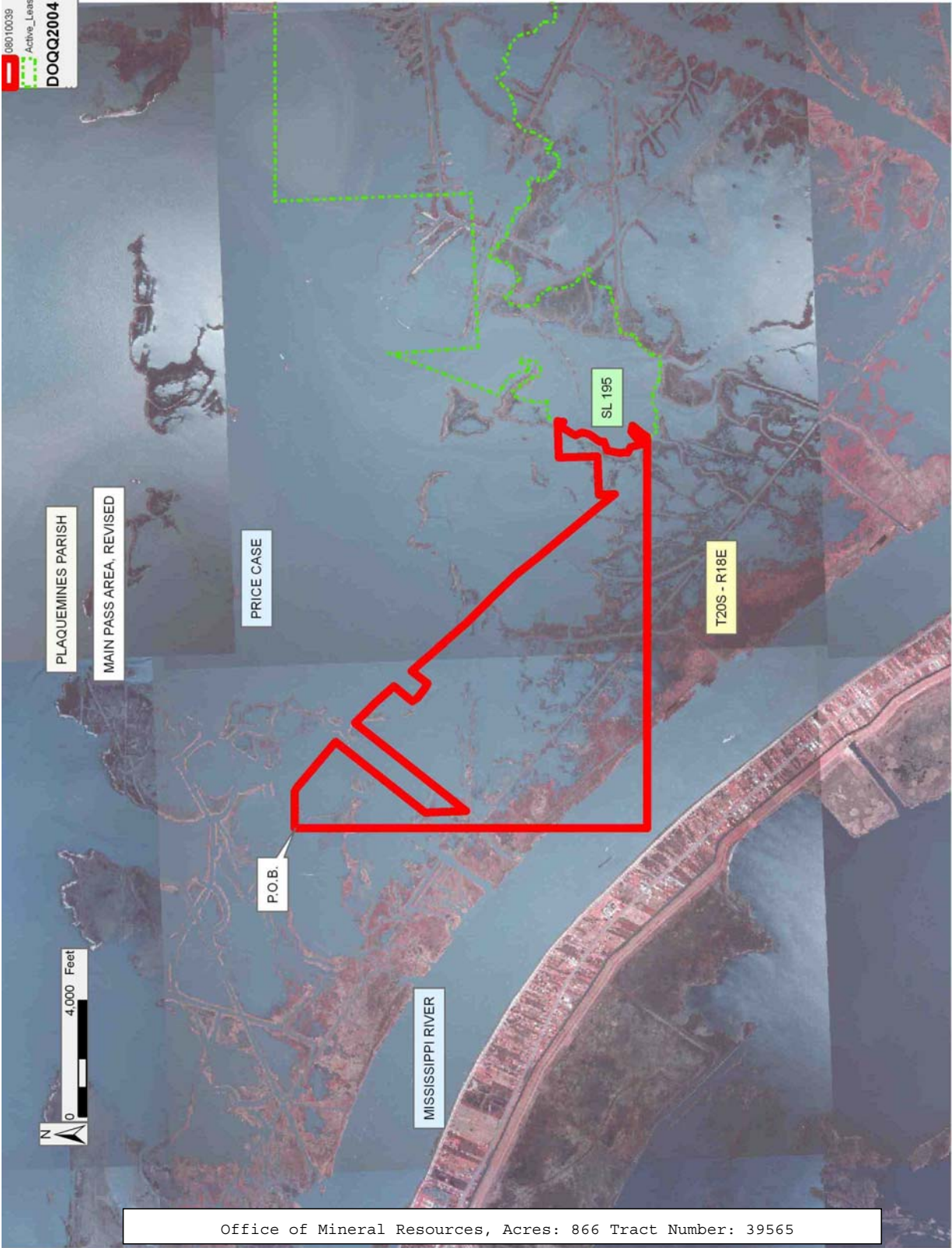
NOTE: The above description of the Tract nominated for lease has been provided and corrected, where required, exclusively by the nomination party. Any mineral lease selected from this Tract and awarded by the Louisiana State Mineral Board shall be without warranty of any kind, either express, implied, or statutory, including, but not limited to, the implied warranties of merchantability and fitness for a particular purpose. Should the mineral lease awarded by the Louisiana State Mineral Board be subsequently modified, cancelled or abrogated due to the existence of conflicting leases, operating agreements, private claims or other future obligations or conditions which may affect all or any portion of the leased Tract, it shall not relieve the Lessee of the obligation to pay any bonus due thereon to the Louisiana State Mineral Board, nor shall the Louisiana State Mineral Board be obligated to refund any consideration paid by the Lessor prior to such modification, cancellation, or abrogation, including, but not limited to, bonuses, rentals and royalties.

NOTE: The State of Louisiana does hereby reserve, and this lease shall be subject to, the imprescriptible right of surface use in the nature of a servitude in favor of the Department of Natural Resources, including its Offices and Commissions, for the sole purpose of implementing, constructing, servicing and maintaining approved coastal zone management and/or restoration projects. Utilization of any and all rights derived under this lease by the mineral lessee, its agents, successors or assigns, shall not interfere with nor hinder the reasonable surface use by the Department of Natural Resources, its Offices or Commissions, as herein above reserved.

NOTE: The Department of Wildlife and Fisheries has designated certain areas in the coastal waters of the State of Louisiana as Oyster Seed Bed Areas. The exact location of those Seed Bed Areas must be obtained from the Department of Wildlife and Fisheries and any work done under a mineral lease from the State of Louisiana may necessarily be conducted in conformity with the rules and regulations promulgated by the said Department of Wildlife and Fisheries for Oyster Seed Bed Areas.

Bidder	Cash Payment	Price/Acre	Rental	Oil	Gas	Other

Applicant: HAROLD J. ANDERSON, INC.



Office of Mineral Resources, Acres: 866 Tract Number: 39565

TRACT 39566 - Plaquemines Parish, Louisiana

All of the lands now or formerly constituting the beds and bottoms of all water bodies of every nature and description as to which title is vested in the State of Louisiana, together with all islands arising therein and other lands formed by accretion or by reliction, where allowed by law, excepting tax adjudicated lands, and not presently under mineral lease on January 9, 2008, situated in Plaquemines Parish, Louisiana, and more particularly described as follows: Beginning at the Southeast corner of State Lease No. 18581, as amended, having Coordinates of X = 2,638,370.13 and Y = 258,136.26; thence South 02 degrees 08 minutes 26 seconds East 255.68 feet to the Northeast corner of State Lease No. 19175 having Coordinates of X = 2,638,379.68 and Y = 257,880.76; thence South 87 degrees 51 minutes 33 seconds West 1,320.01 feet along the Northern boundary of said State Lease No. 19175 to a point having Coordinates of X = 2,637,060.59 and Y = 257,831.45; thence North 02 degrees 08 minutes 27 seconds West 206.65 feet to the Southwest corner of said State Lease No. 18581 having Coordinates of X = 2,637,052.87 and Y = 258,037.96; thence along the boundary of said State Lease No. 18581 the following courses: North 72 degrees 33 minutes 15 seconds East 36.82 feet to a point having Coordinates of X = 2,637,088.00 and Y = 258,049.00; North 73 degrees 09 minutes 22 seconds East 113.89 feet to a point having Coordinates of X = 2,637,197.00 and Y = 258,082.00; North 73 degrees 09 minutes 22 seconds East 113.89 feet to a point having Coordinates of X = 2,637,306.00 and Y = 258,115.00; North 75 degrees 21 minutes 29 seconds East 114.73 feet to a point having Coordinates of X = 2,637,417.00 and Y = 258,144.00; North 78 degrees 02 minutes 36 seconds East 86.88 feet to a point having Coordinates of X = 2,637,502.00 and Y = 258,162.00; North 82 degrees 05 minutes 34 seconds East 72.69 feet to a point having Coordinates of X = 2,637,574.00 and Y = 258,172.00; North 84 degrees 17 minutes 22 seconds East 70.35 feet to a point having Coordinates of X = 2,637,644.00 and Y = 258,179.00; North 88 degrees 36 minutes 10 seconds East 82.02 feet to a point having Coordinates of X = 2,637,726.00 and Y = 258,181.00; South 89 degrees 08 minutes 42 seconds East 67.01 feet to a point having Coordinates of X = 2,637,793.00 and Y = 258,180.00; South 86 degrees 19 minutes 32 seconds East 109.22 feet to a point having Coordinates of X = 2,637,902.00 and Y = 258,173.00; South 83 degrees 27 minutes 48 seconds East 96.63 feet to a point having Coordinates of X = 2,637,998.00 and Y = 258,162.00; South 80 degrees 56 minutes 57 seconds East 114.42 feet to a point having Coordinates of X = 2,638,111.00 and Y = 258,144.00; South 78 degrees 53 minutes 30 seconds East 45.73 feet to a point having Coordinates of X = 2,638,155.87 and Y = 258,135.19; North 89 degrees 42 minutes 54 seconds East 92.45 feet to a point having Coordinates of X = 2,638,248.32 and Y = 258,135.65 and North 89 degrees 42 minutes 47 seconds East 121.81 feet to a point of beginning, containing approximately **8.64 acres**, all as more particularly outlined on a plat on file in the Office of Mineral Resources, Department of Natural Resources. All bearings, distances and coordinates are based on Louisiana Coordinate System of 1927, (North or South Zone), where applicable.

NOTE: The above description of the Tract nominated for lease has been provided and corrected, where required, exclusively by the nomination party. Any mineral lease selected from this Tract and awarded by the Louisiana State Mineral Board shall be without warranty of any kind, either express, implied, or statutory, including, but not limited to, the implied warranties of merchantability and fitness for a particular purpose. Should the mineral lease awarded by the Louisiana State Mineral Board be subsequently modified, cancelled or abrogated due to the existence of conflicting leases, operating agreements, private claims or other future obligations or conditions which may affect all or any portion of the leased Tract, it shall not relieve the Lessee of the obligation to pay any bonus due thereon to the Louisiana State Mineral Board, nor shall the Louisiana State Mineral Board be obligated to refund any consideration paid by the Lessor prior to such modification, cancellation, or abrogation, including, but not limited to, bonuses, rentals and royalties.

NOTE: The State of Louisiana does hereby reserve, and this lease shall be subject to, the imprescriptible right of surface use in the nature of a servitude in favor of the Department of Natural Resources, including its Offices and Commissions, for the sole purpose of implementing, constructing, servicing and maintaining approved coastal zone management and/or restoration projects. Utilization of any and all rights derived under this lease by the mineral lessee, its agents, successors or assigns, shall not interfere with nor hinder the reasonable surface use by the Department of Natural Resources, its Offices or Commissions, as herein above reserved.

NOTE: The Department of Wildlife and Fisheries has designated certain areas in the coastal waters of the State of Louisiana as Oyster Seed Bed Areas. The exact location of those Seed Bed Areas must be obtained from the Department of Wildlife and Fisheries and any work done under a mineral lease from the State of Louisiana may necessarily be conducted in conformity with the rules and regulations promulgated by the said Department of Wildlife and Fisheries for Oyster Seed Bed Areas.

Applicant: HAROLD J. ANDERSON, INC.

Bidder	Cash Payment	Price/Acre	Rental	Oil	Gas	Other

Legend
08010050
Active_Leases
DOQQ2004



PLAQUEMINES PARISH

MAIN PASS AREA, REVISED

PRICE CASE

SL 18581

P.O.B.

SL 17236

SL 19175

BRETON SOUND

Office of Mineral Resources, Acres: 8.64 Tract Number: 39566

TRACT 39567 - Plaquemines Parish, Louisiana

All of the lands now or formerly constituting the beds and bottoms of all water bodies of every nature and description as to which title is vested in the State of Louisiana, together with all islands arising therein and other lands formed by accretion or by reliction, where allowed by law, excepting tax adjudicated lands, and not presently under mineral lease on January 9, 2008, situated in Plaquemines Parish, Louisiana, and more particularly described as follows: All lands below ordinary high water mark within the bounds of River Lot or Section 5, Township 19 South, Range 18 East of the Price Case (Tract B-3) containing approximately 92 gross acres and approximately **36.8 net acres**, all as more particularly outlined on a plat on file in the Office of Mineral Resources, Department of Natural Resources. All bearings, distances and coordinates are based on Louisiana Coordinate System of 1927, (North or South Zone), where applicable.

NOTE: The above description of the Tract nominated for lease has been provided and corrected, where required, exclusively by the nomination party. Any mineral lease selected from this Tract and awarded by the Louisiana State Mineral Board shall be without warranty of any kind, either express, implied, or statutory, including, but not limited to, the implied warranties of merchantability and fitness for a particular purpose. Should the mineral lease awarded by the Louisiana State Mineral Board be subsequently modified, cancelled or abrogated due to the existence of conflicting leases, operating agreements, private claims or other future obligations or conditions which may affect all or any portion of the leased Tract, it shall not relieve the Lessee of the obligation to pay any bonus due thereon to the Louisiana State Mineral Board, nor shall the Louisiana State Mineral Board be obligated to refund any consideration paid by the Lessor prior to such modification, cancellation, or abrogation, including, but not limited to, bonuses, rentals and royalties.

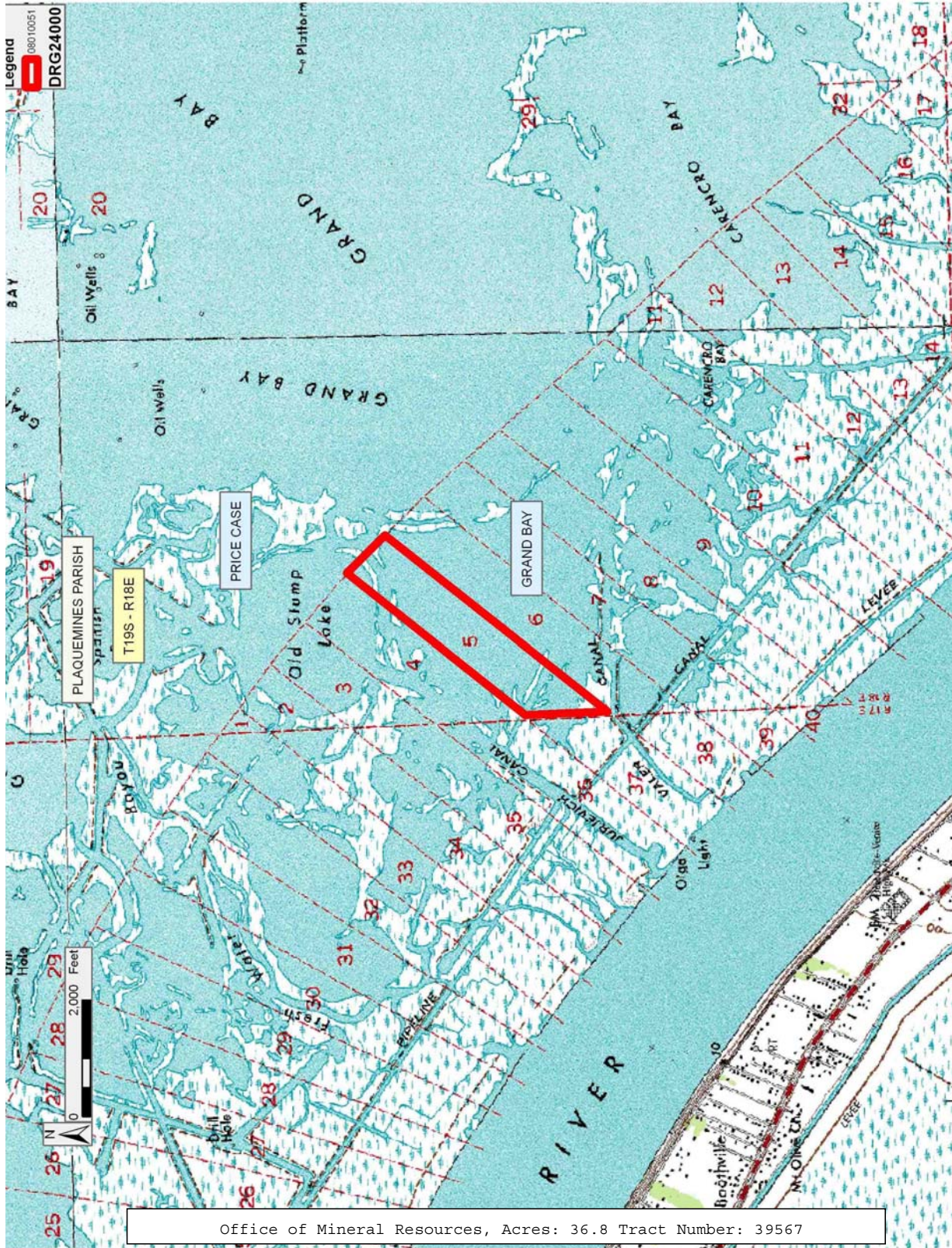
NOTE: The State of Louisiana does hereby reserve, and this lease shall be subject to, the imprescriptible right of surface use in the nature of a servitude in favor of the Department of Natural Resources, including its Offices and Commissions, for the sole purpose of implementing, constructing, servicing and maintaining approved coastal zone management and/or restoration projects. Utilization of any and all rights derived under this lease by the mineral lessee, its agents, successors or assigns, shall not interfere with nor hinder the reasonable surface use by the Department of Natural Resources, its Offices or Commissions, as herein above reserved.

NOTE: The Department of Wildlife and Fisheries has designated certain areas in the coastal waters of the State of Louisiana as Oyster Seed Bed Areas. The exact location of those Seed Bed Areas must be obtained from the Department of Wildlife and Fisheries and any work done under a mineral lease from the State of Louisiana may necessarily be conducted in

conformity with the rules and regulations promulgated by the said Department of Wildlife and Fisheries for Oyster Seed Bed Areas.

Applicant: HAROLD J. ANDERSON, INC.

Bidder	Cash Payment	Price/Acre	Rental	Oil	Gas	Other



Office of Mineral Resources, Acres: 36.8 Tract Number: 39567

TRACT 39568 - Plaquemines Parish, Louisiana

All of the lands now or formerly constituting the beds and bottoms of all water bodies of every nature and description as to which title is vested in the State of Louisiana, together with all islands arising therein and other lands formed by accretion or by reliction, where allowed by law, excepting tax adjudicated lands, and not presently under mineral lease on January 9, 2008, situated in Plaquemines Parish, Louisiana, and more particularly described as follows: Beginning at a point on the Eastern boundary of the Price Case (Tract A-1), also being the Westernmost Southwest corner of State Lease No. 17236 having Coordinates of X = 2,633,512.29 and Y = 257,698.81; thence along the boundary of said State Lease No. 17236 the following courses: North 87 degrees 51 minutes 33 seconds East 910.79 feet; South 02 degrees 08 minutes 27 seconds East 320.00 feet; North 87 degrees 51 minutes 33 seconds East 1,320.00 feet; North 02 degrees 08 minutes 27 seconds West 320.00 feet and North 87 degrees 51 minutes 33 seconds East 1,319.99 feet to its Southeast corner, also being a point on the Eastern boundary of the Price Case (Tract B-1) having Coordinates of X = 2,637,060.59 and Y = 257,831.45; thence along the boundary of said Price Case (Tract B-1) the following courses: South 02 degrees 08 minutes 27 seconds East 619.99 feet; South 87 degrees 51 minutes 33 seconds West 1,320.00 feet and South 02 degrees 08 minutes 26 seconds East 303.08 feet to a point on the North boundary of Operating Agreement No. 0261 having Coordinates of X = 2,635,775.99 and Y = 256,859.71; thence South 87 degrees 51 minutes 33 seconds West 2,603.07 feet along the North boundary of said Operating Agreement No. 0261 to a point on the Eastern boundary of said Price Case (Tract A-1) having Coordinates of X = 2,633,174.74 and Y = 256,762.47; thence North 19 degrees 49 minutes 27 seconds East 995.33 feet to the point of beginning, containing approximately 60 gross acres and approximately **24 net acres**, all as more particularly outlined on a plat on file in the Office of Mineral Resources, Department of Natural Resources. All bearings, distances and coordinates are based on Louisiana Coordinate System of 1927, (North or South Zone), where applicable.

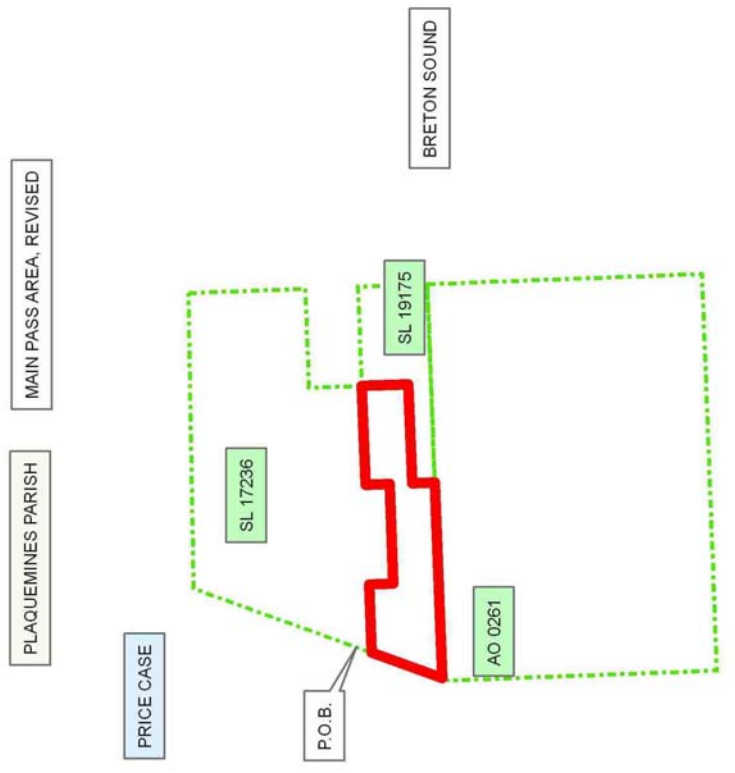
NOTE: The above description of the Tract nominated for lease has been provided and corrected, where required, exclusively by the nomination party. Any mineral lease selected from this Tract and awarded by the Louisiana State Mineral Board shall be without warranty of any kind, either express, implied, or statutory, including, but not limited to, the implied warranties of merchantability and fitness for a particular purpose. Should the mineral lease awarded by the Louisiana State Mineral Board be subsequently modified, cancelled or abrogated due to the existence of conflicting leases, operating agreements, private claims or other future obligations or conditions which may affect all or any portion of the leased Tract, it shall not relieve the Lessee of the obligation to pay any bonus due thereon to the Louisiana State Mineral Board, nor shall the Louisiana State Mineral Board be obligated to refund any consideration paid by the Lessor prior to such modification, cancellation, or abrogation, including, but not limited to, bonuses, rentals and royalties.

NOTE: The State of Louisiana does hereby reserve, and this lease shall be subject to, the imprescriptible right of surface use in the nature of a servitude in favor of the Department of Natural Resources, including its Offices and Commissions, for the sole purpose of implementing, constructing, servicing and maintaining approved coastal zone management and/or restoration projects. Utilization of any and all rights derived under this lease by the mineral lessee, its agents, successors or assigns, shall not interfere with nor hinder the reasonable surface use by the Department of Natural Resources, its Offices or Commissions, as herein above reserved.

NOTE: The Department of Wildlife and Fisheries has designated certain areas in the coastal waters of the State of Louisiana as Oyster Seed Bed Areas. The exact location of those Seed Bed Areas must be obtained from the Department of Wildlife and Fisheries and any work done under a mineral lease from the State of Louisiana may necessarily be conducted in conformity with the rules and regulations promulgated by the said Department of Wildlife and Fisheries for Oyster Seed Bed Areas.

Applicant: HAROLD J. ANDERSON, INC.

Bidder	Cash Payment	Price/Acre	Rental	Oil	Gas	Other



Office of Mineral Resources, Acres: 24 Tract Number: 39568

TRACT 39569 - Plaquemines Parish, Louisiana

All of the lands now or formerly constituting the beds and bottoms of all water bodies of every nature and description as to which title is vested in the State of Louisiana, together with all islands arising therein and other lands formed by accretion or by reliction, where allowed by law, excepting tax adjudicated lands, and not presently under mineral lease on January 9, 2008, situated in Plaquemines Parish, Louisiana, and more particularly described as follows: Beginning at the Northernmost point of the Price Case (Tract C-4), also being a point on the Western boundary Operating Agreement No. 0261 having Coordinates of X = 2,633,141.36 and Y = 256,669.32; thence South 02 degrees 08 minutes 27 seconds East approximately 3,356 feet along the West line of said Operating Agreement No. 0261 to a point of intersection with the boundary of State Lease No. 195, as amended; thence Northerly, Southwesterly and Southeasterly along the boundary of said State Lease No. 195 to a point of intersection with the Eastern boundary of said Price Case (Tract C-4); thence Southerly, Northwesterly, Northerly and Northeasterly along the meanders of the boundary of said Price Case (Tract C-4) to the point of beginning **LESS AND EXCEPT** that portion, if any, of Operating Agreement No. 0261, which is limited to all sands from the surface to 100 feet below the stratigraphic equivalent of the 11,000' sand as seen on electric log for State Lease No. 2792 Well No. 9 at 10,982-11,010 feet, which may lie within the above described tract, **ALSO LESS AND EXCEPT** that portion, if any, of State Lease No. 195, as amended, that may lie within the above described tract, containing approximately 31 gross acres and approximately **18.6 net acres**, all as more particularly outlined on a plat on file in the Office of Mineral Resources, Department of Natural Resources. All bearings, distances and coordinates are based on Louisiana Coordinate System of 1927, (North or South Zone), where applicable.

NOTE: The above description of the Tract nominated for lease has been provided and corrected, where required, exclusively by the nomination party. Any mineral lease selected from this Tract and awarded by the Louisiana State Mineral Board shall be without warranty of any kind, either express, implied, or statutory, including, but not limited to, the implied warranties of merchantability and fitness for a particular purpose. Should the mineral lease awarded by the Louisiana State Mineral Board be subsequently modified, cancelled or abrogated due to the existence of conflicting leases, operating agreements, private claims or other future obligations or conditions which may affect all or any portion of the leased Tract, it shall not relieve the Lessee of the obligation to pay any bonus due thereon to the Louisiana State Mineral Board, nor shall the Louisiana State Mineral Board be obligated to refund any consideration paid by the Lessor prior to such modification, cancellation, or abrogation, including, but not limited to, bonuses, rentals and royalties.

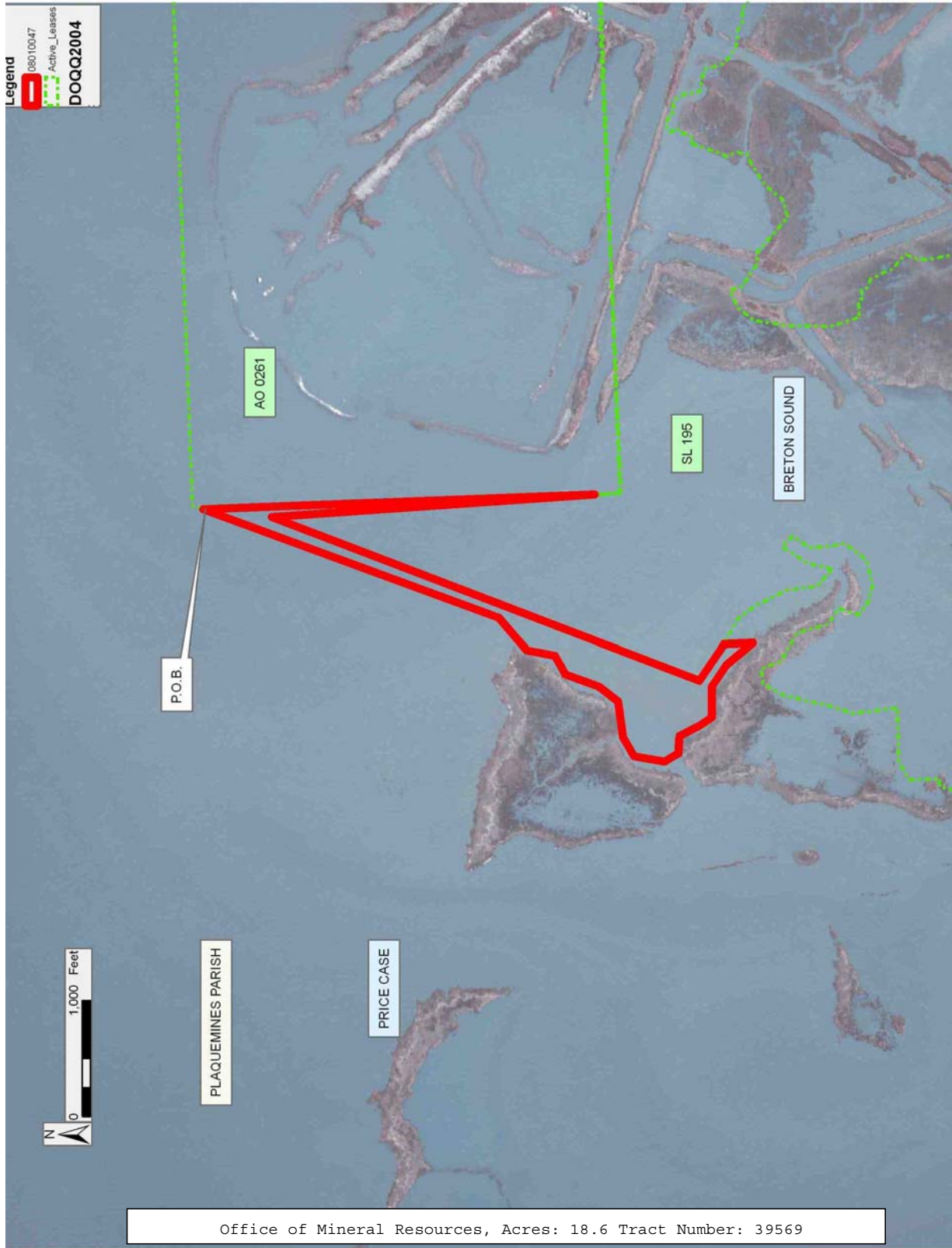
NOTE: The State of Louisiana does hereby reserve, and this lease shall be subject to, the imprescriptible right of surface use in the nature of a servitude in favor of the Department of Natural Resources, including its

Offices and Commissions, for the sole purpose of implementing, constructing, servicing and maintaining approved coastal zone management and/or restoration projects. Utilization of any and all rights derived under this lease by the mineral lessee, its agents, successors or assigns, shall not interfere with nor hinder the reasonable surface use by the Department of Natural Resources, its Offices or Commissions, as herein above reserved.

NOTE: The Department of Wildlife and Fisheries has designated certain areas in the coastal waters of the State of Louisiana as Oyster Seed Bed Areas. The exact location of those Seed Bed Areas must be obtained from the Department of Wildlife and Fisheries and any work done under a mineral lease from the State of Louisiana may necessarily be conducted in conformity with the rules and regulations promulgated by the said Department of Wildlife and Fisheries for Oyster Seed Bed Areas.

Applicant: HAROLD J. ANDERSON, INC.

Bidder	Cash Payment	Price/Acre	Rental	Oil	Gas	Other



Office of Mineral Resources, Acres: 18.6 Tract Number: 39569

TRACT 39570 - Plaquemines Parish, Louisiana

All of the lands now or formerly constituting the beds and bottoms of all water bodies of every nature and description as to which title is vested in the State of Louisiana, together with all islands arising therein and other lands formed by accretion or by reliction, where allowed by law, excepting tax adjudicated lands, and not presently under mineral lease on January 9, 2008, situated in Plaquemines Parish, Louisiana, and more particularly described as follows: Beginning at a point where the line common to River Lots or Sections 8 and 9, intersects the 40 arpent line, which is also the Southwest line of Section 30; thence Southwesterly along the line common to Sections 8 and 9 a distance of 670 feet; thence North 52 degrees 00 minutes 00 seconds West to the line common to River Lots or Sections 7 and 8; thence Northeasterly along said line to its intersection with the 40 arpent line; thence Southeasterly along said 40 arpent line, which is also the line common to River Lot or Section 8 and Section 30, to the place of beginning; all in Township 19 South, Range 18 East; tract containing approximately 15 gross acres and approximately **6 net acres**, all as more particularly outlined on a plat on file in the Office of Mineral Resources, Department of Natural Resources. All bearings, distances and coordinates are based on Louisiana Coordinate System of 1927, (North or South Zone), where applicable.

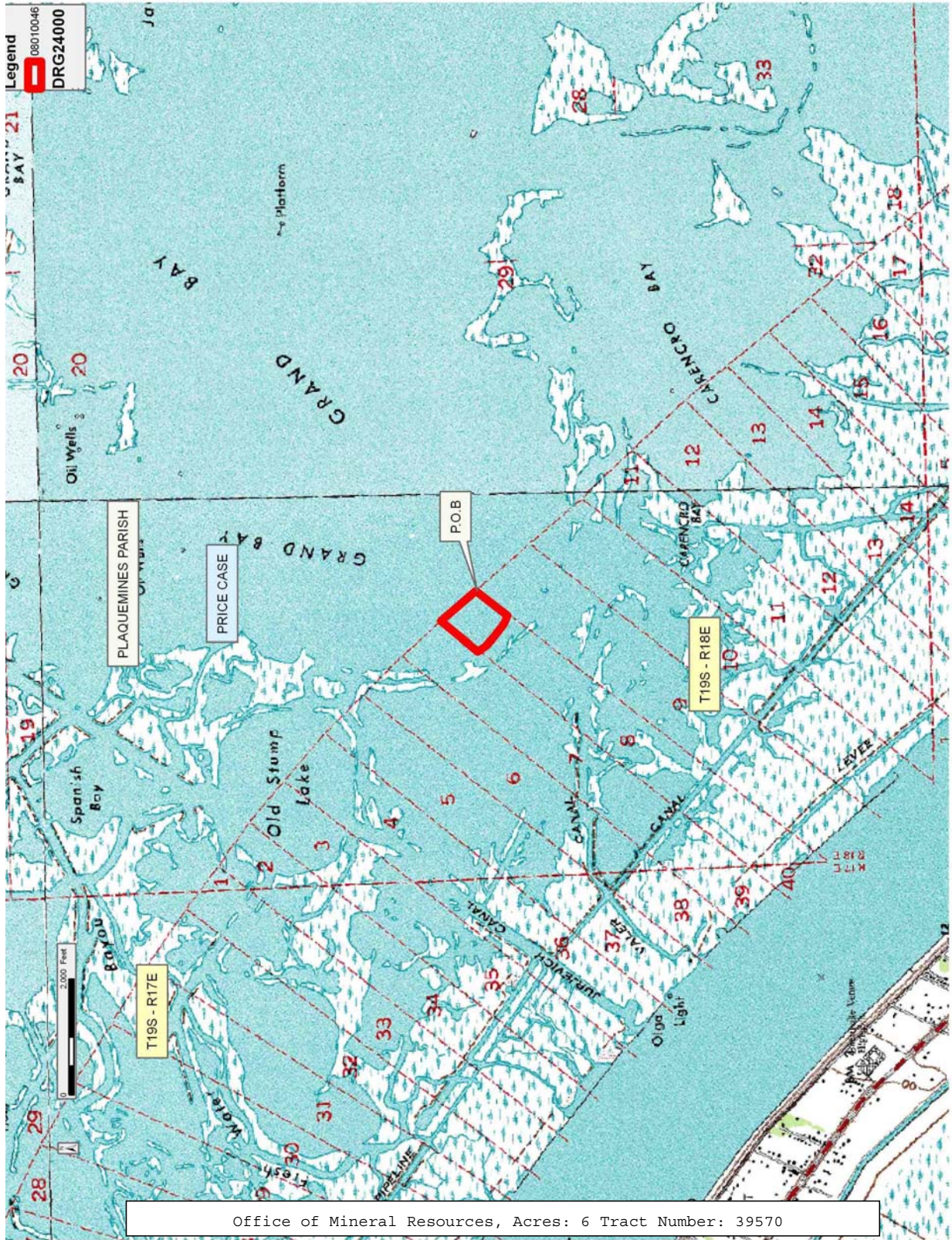
NOTE: The above description of the Tract nominated for lease has been provided and corrected, where required, exclusively by the nomination party. Any mineral lease selected from this Tract and awarded by the Louisiana State Mineral Board shall be without warranty of any kind, either express, implied, or statutory, including, but not limited to, the implied warranties of merchantability and fitness for a particular purpose. Should the mineral lease awarded by the Louisiana State Mineral Board be subsequently modified, cancelled or abrogated due to the existence of conflicting leases, operating agreements, private claims or other future obligations or conditions which may affect all or any portion of the leased Tract, it shall not relieve the Lessee of the obligation to pay any bonus due thereon to the Louisiana State Mineral Board, nor shall the Louisiana State Mineral Board be obligated to refund any consideration paid by the Lessor prior to such modification, cancellation, or abrogation, including, but not limited to, bonuses, rentals and royalties.

NOTE: The State of Louisiana does hereby reserve, and this lease shall be subject to, the imprescriptible right of surface use in the nature of a servitude in favor of the Department of Natural Resources, including its Offices and Commissions, for the sole purpose of implementing, constructing, servicing and maintaining approved coastal zone management and/or restoration projects. Utilization of any and all rights derived under this lease by the mineral lessee, its agents, successors or assigns, shall not interfere with nor hinder the reasonable surface use by the Department of Natural Resources, its Offices or Commissions, as herein above reserved.

NOTE: The Department of Wildlife and Fisheries has designated certain areas in the coastal waters of the State of Louisiana as Oyster Seed Bed Areas. The exact location of those Seed Bed Areas must be obtained from the Department of Wildlife and Fisheries and any work done under a mineral lease from the State of Louisiana may necessarily be conducted in conformity with the rules and regulations promulgated by the said Department of Wildlife and Fisheries for Oyster Seed Bed Areas.

Applicant: HAROLD J. ANDERSON, INC.

Bidder	Cash Payment	Price/Acre	Rental	Oil	Gas	Other



Office of Mineral Resources, Acres: 6 Tract Number: 39570

TRACT 39571 - Plaquemines Parish, Louisiana

All of the lands now or formerly constituting the beds and bottoms of all water bodies of every nature and description as to which title is vested in the State of Louisiana, together with all islands arising therein and other lands formed by accretion or by reliction, where allowed by law, excepting tax adjudicated lands, and not presently under mineral lease on January 9, 2008, situated in Plaquemines Parish, Louisiana, and more particularly described as follows: Beginning at a point on the boundary of the Price Case (Tract A-1) having Coordinates of X = 2,632,004.69 and Y = 251,738.33; thence North 02 degrees 08 minutes 27 seconds West approximately 476 feet along the boundary of said Price Case (Tract A-1) to a point on the boundary of State Lease No. 195, as amended; thence Southeasterly, Northeasterly, Southerly, Westerly and Northwesterly along the meanders of the boundary of said State Lease No. 195 to a point of intersection with the boundary of said Price Case (Tract A-1); thence North 87 degrees 51 minutes 33 seconds East approximately 169 feet along the boundary of said Price Case (Tract A-1) to the point of beginning, **LESS AND EXCEPT** that portion, if any, of the Price Case that may lie within the above described tract, **ALSO LESS AND EXCEPT** that portion, if any, of State Lease No. 195, as amended, that may lie within the above described tract, containing approximately **6 acres**, all as more particularly outlined on a plat on file in the Office of Mineral Resources, Department of Natural Resources. All bearings, distances and coordinates are based on Louisiana Coordinate System of 1927, (North or South Zone), where applicable.

NOTE: The above description of the Tract nominated for lease has been provided and corrected, where required, exclusively by the nomination party. Any mineral lease selected from this Tract and awarded by the Louisiana State Mineral Board shall be without warranty of any kind, either express, implied, or statutory, including, but not limited to, the implied warranties of merchantability and fitness for a particular purpose. Should the mineral lease awarded by the Louisiana State Mineral Board be subsequently modified, cancelled or abrogated due to the existence of conflicting leases, operating agreements, private claims or other future obligations or conditions which may affect all or any portion of the leased Tract, it shall not relieve the Lessee of the obligation to pay any bonus due thereon to the Louisiana State Mineral Board, nor shall the Louisiana State Mineral Board be obligated to refund any consideration paid by the Lessor prior to such modification, cancellation, or abrogation, including, but not limited to, bonuses, rentals and royalties.

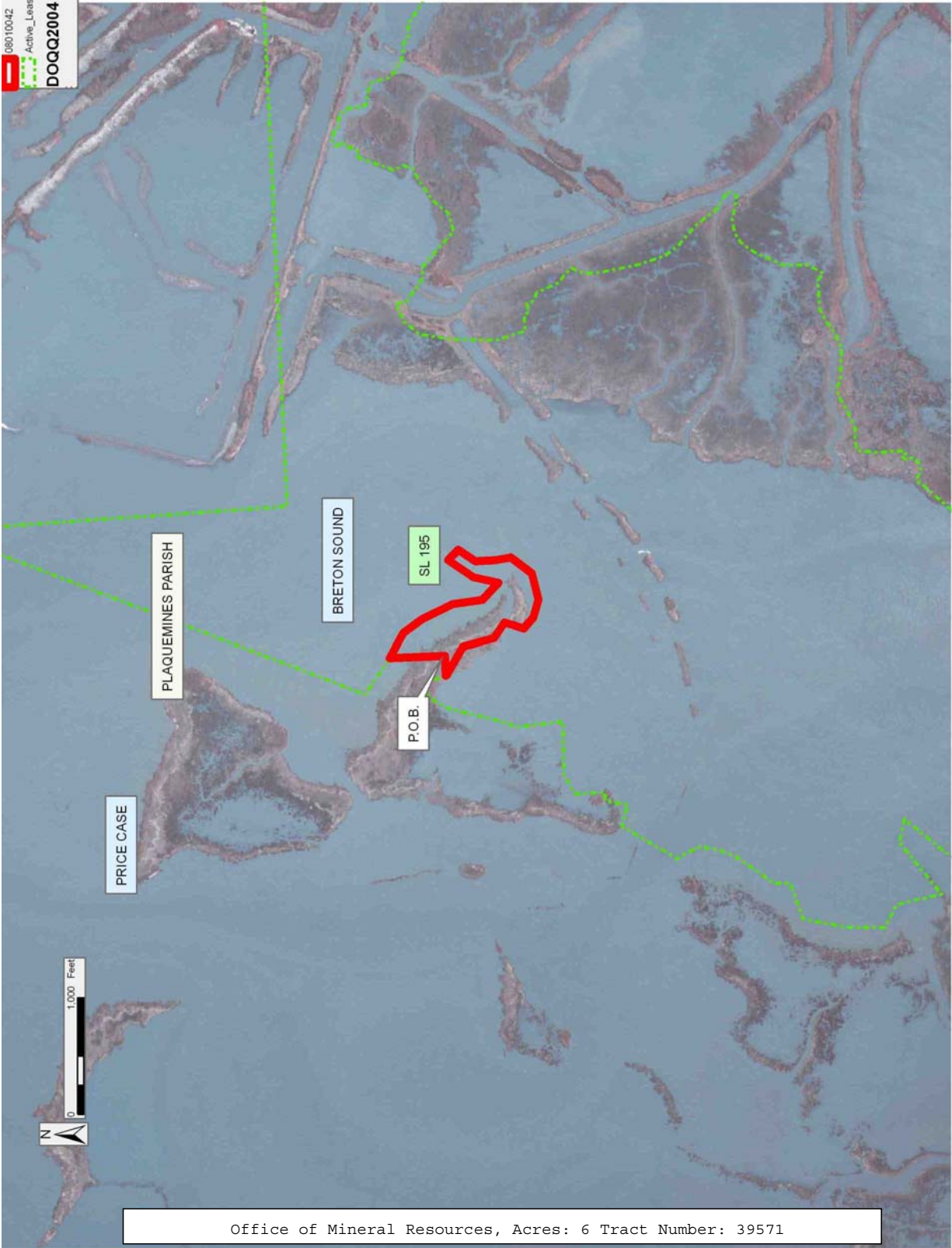
NOTE: The State of Louisiana does hereby reserve, and this lease shall be subject to, the imprescriptible right of surface use in the nature of a servitude in favor of the Department of Natural Resources, including its Offices and Commissions, for the sole purpose of implementing, constructing, servicing and maintaining approved coastal zone management and/or restoration projects. Utilization of any and all rights derived under this lease by the mineral lessee, its agents, successors or assigns,

shall not interfere with nor hinder the reasonable surface use by the Department of Natural Resources, its Offices or Commissions, as herein above reserved.

NOTE: The Department of Wildlife and Fisheries has designated certain areas in the coastal waters of the State of Louisiana as Oyster Seed Bed Areas. The exact location of those Seed Bed Areas must be obtained from the Department of Wildlife and Fisheries and any work done under a mineral lease from the State of Louisiana may necessarily be conducted in conformity with the rules and regulations promulgated by the said Department of Wildlife and Fisheries for Oyster Seed Bed Areas.

Applicant: HAROLD J. ANDERSON, INC.

Bidder	Cash Payment	Price/Acre	Rental	Oil	Gas	Other



Office of Mineral Resources, Acres: 6 Tract Number: 39571

TRACT 39572 - Plaquemines Parish, Louisiana

All of the lands now or formerly constituting the beds and bottoms of all water bodies of every nature and description as to which title is vested in the State of Louisiana, together with all islands arising therein and other lands formed by accretion or by reliction, where allowed by law, excepting tax adjudicated lands, and not presently under mineral lease on January 9, 2008, situated in Plaquemines Parish, Louisiana, and more particularly described as follows: Beginning at a point on the Price Case (Tract A-1) having Coordinates of X = 2,630,775.55 and Y = 251,692.39; thence North 87 degrees 51 minutes 33 seconds East approximately 784 feet to a point on the boundary of State Lease No. 195, as amended; thence Southerly, Westerly and Southwesterly along the meanders of the boundary of said State Lease No. 195 to a point of intersection with the boundary of said Price Case (Tract A-1); thence North 02 degrees 08 minutes 27 seconds West approximately 1,071 feet along the boundary of said Price Case (Tract A-1) to the point of beginning, **LESS AND EXCEPT** that portion, if any, of the Price Case that may lie within the above described tract, **ALSO LESS AND EXCEPT** that portion, if any, of State Lease No. 195, as amended, that may lie within the above described tract, containing approximately **13 acres**, all as more particularly outlined on a plat on file in the Office of Mineral Resources, Department of Natural Resources. All bearings, distances and coordinates are based on Louisiana Coordinate System of 1927, (North or South Zone), where applicable.

NOTE: The above description of the Tract nominated for lease has been provided and corrected, where required, exclusively by the nomination party. Any mineral lease selected from this Tract and awarded by the Louisiana State Mineral Board shall be without warranty of any kind, either express, implied, or statutory, including, but not limited to, the implied warranties of merchantability and fitness for a particular purpose. Should the mineral lease awarded by the Louisiana State Mineral Board be subsequently modified, cancelled or abrogated due to the existence of conflicting leases, operating agreements, private claims or other future obligations or conditions which may affect all or any portion of the leased Tract, it shall not relieve the Lessee of the obligation to pay any bonus due thereon to the Louisiana State Mineral Board, nor shall the Louisiana State Mineral Board be obligated to refund any consideration paid by the Lessor prior to such modification, cancellation, or abrogation, including, but not limited to, bonuses, rentals and royalties.

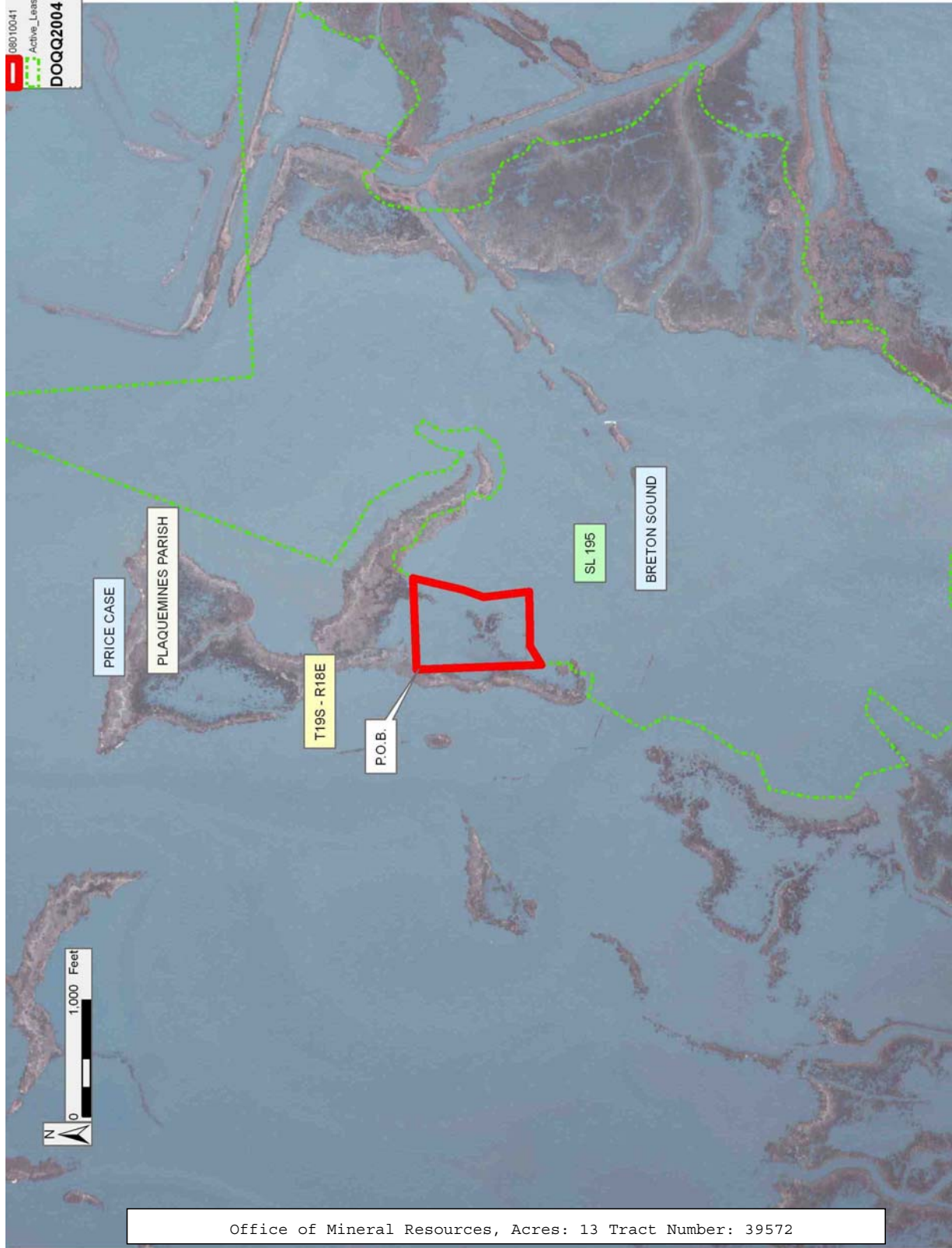
NOTE: The State of Louisiana does hereby reserve, and this lease shall be subject to, the imprescriptible right of surface use in the nature of a servitude in favor of the Department of Natural Resources, including its Offices and Commissions, for the sole purpose of implementing, constructing, servicing and maintaining approved coastal zone management and/or restoration projects. Utilization of any and all rights derived under this lease by the mineral lessee, its agents, successors or assigns, shall not interfere with nor hinder the reasonable surface use by the

Department of Natural Resources, its Offices or Commissions, as herein above reserved.

NOTE: The Department of Wildlife and Fisheries has designated certain areas in the coastal waters of the State of Louisiana as Oyster Seed Bed Areas. The exact location of those Seed Bed Areas must be obtained from the Department of Wildlife and Fisheries and any work done under a mineral lease from the State of Louisiana may necessarily be conducted in conformity with the rules and regulations promulgated by the said Department of Wildlife and Fisheries for Oyster Seed Bed Areas.

Applicant: HAROLD J. ANDERSON, INC.

Bidder	Cash Payment	Price/Acre	Rental	Oil	Gas	Other



Office of Mineral Resources, Acres: 13 Tract Number: 39572

TRACT 39573 - Terrebonne Parish, Louisiana

All of the lands now or formerly constituting the beds and bottoms of all water bodies of every nature and description as to which title is vested in the State of Louisiana, together with all islands arising therein and other lands formed by accretion or by reliction, where allowed by law, excepting tax adjudicated lands, and not presently under mineral lease on January 9, 2008, situated in Terrebonne Parish, Louisiana, and more particularly described as follows: Beginning at the Westernmost Northwest corner of State Lease No. 19024 having Coordinates of X = 2,221,878.97 and Y = 248,847.02; thence North 600.00 feet to a point having Coordinates of X = 2,221,878.97 and Y = 249,447.02; thence East approximately 3,754 feet to a point of intersection with the boundary of State Lease No. 19024 having a Coordinate of Y = 249,447.02; thence Southwesterly, Westerly, Southeasterly, and Westerly along the boundary of said State Lease No. 19024 to the point of beginning, **LESS AND EXCEPT** that portion, if any, of State Lease No. 19024 which may lie within the above described tract, containing approximately **3 acres**, all as more particularly outlined on a plat on file in the Office of Mineral Resources, Department of Natural Resources. All bearings, distances and coordinates are based on Louisiana Coordinate System of 1927, (North or South Zone), where applicable.

NOTE: The above description of the Tract nominated for lease has been provided and corrected, where required, exclusively by the nomination party. Any mineral lease selected from this Tract and awarded by the Louisiana State Mineral Board shall be without warranty of any kind, either express, implied, or statutory, including, but not limited to, the implied warranties of merchantability and fitness for a particular purpose. Should the mineral lease awarded by the Louisiana State Mineral Board be subsequently modified, cancelled or abrogated due to the existence of conflicting leases, operating agreements, private claims or other future obligations or conditions which may affect all or any portion of the leased Tract, it shall not relieve the Lessee of the obligation to pay any bonus due thereon to the Louisiana State Mineral Board, nor shall the Louisiana State Mineral Board be obligated to refund any consideration paid by the Lessor prior to such modification, cancellation, or abrogation, including, but not limited to, bonuses, rentals and royalties.

NOTE: The State of Louisiana does hereby reserve, and this lease shall be subject to, the imprescriptible right of surface use in the nature of a servitude in favor of the Department of Natural Resources, including its Offices and Commissions, for the sole purpose of implementing, constructing, servicing and maintaining approved coastal zone management and/or restoration projects. Utilization of any and all rights derived under this lease by the mineral lessee, its agents, successors or assigns, shall not interfere with nor hinder the reasonable surface use by the Department of Natural Resources, its Offices or Commissions, as herein above reserved.

NOTE: The Department of Wildlife and Fisheries has designated certain areas in the coastal waters of the State of Louisiana as Oyster Seed Bed Areas. The exact location of those Seed Bed Areas must be obtained from the Department of Wildlife and Fisheries and any work done under a mineral lease from the State of Louisiana may necessarily be conducted in conformity with the rules and regulations promulgated by the said Department of Wildlife and Fisheries for Oyster Seed Bed Areas.

Applicant: BATTLE ISLAND ENERGY, L.L.C.

Bidder	Cash Payment	Price/Acre	Rental	Oil	Gas	Other

Legend
08010001
Active Leases
DOQQ2004



Office of Mineral Resources, Acres: 3 Tract Number: 39573