

TRACT 39554 - Portion of Block 72, Chandeleur Sound Area, St. Bernard Parish, Louisiana

All of the lands now or formerly constituting the beds and bottoms of all water bodies of every nature and description as to which title is vested in the State of Louisiana, together with all islands arising therein and other lands formed by accretion or by reliction, where allowed by law, excepting tax adjudicated lands, and not presently under mineral lease on January 9, 2008, situated in St. Bernard Parish, Louisiana, and more particularly described as follows: Beginning at a Point having Coordinates of X = 2,598,475.00 and Y = 388,705.00; thence North 7,375.00 feet to a point on the North line of Block 72, Chandeleur Sound Area, said point being the Southwest corner of State Lease No. 4039 having Coordinates of X = 2,598,475.00 and Y = 396,080.00; thence East 7,375.00 feet to along said North line of Block 72, Chandeleur Sound Area, to its Northeast corner, said point also being the Southeast corner of said State Lease No. 4039 a point having Coordinates of X = 2,605,850.00 and Y = 396,080.00; thence South 7,375.00 feet to a point having Coordinates of X = 2,605,850.00 and Y = 388,705.00; thence West 7,375.00 feet to the point of beginning; **LESS AND EXCEPT** in its entirety State Lease No. 16158 and more particularly described as follows: Beginning at a point having coordinates of X = 2,598,475.00 and Y = 388,705.00; thence North 24 degrees 56 minutes 11 seconds East 4423.04 feet to a point on the boundary of State Lease No. 16158, also being the Point of Beginning having coordinates of X=2,600,339.81 and Y=392,715.71; thence along said State Lease No. 16158 the following courses: Northwesterly on an arc having a radius of 23,516.29 feet and a center at X=2,583,243.81 and Y=376,568.18 to a point having coordinates of X=2,599,274.94 and Y=393,773.38; Northwesterly on an arc having a radius of 1,993.54 feet and a center at X=2,600,702.76 and Y=395,164.61 to a point having coordinates of X=2,598,852.49 and Y=394,422.52; Northeasterly on an arc having a radius of 895.64 feet and a center at X=2,599,655.35 and Y=394,819.49 to a point having coordinates of X=2,598,913.67 and Y=395,321.57; Northeasterly on an arc having a radius of 1,308.22 feet and a center at X=2,599,986.74 and Y=394,573.26 to a point having coordinates of X=2,599,665.86 and Y=395,841.52; Northeasterly on an arc having a radius of 2,054.50 feet and a center at X=2,600,252.04 and Y=393,872.42 to a point having coordinates of X=2,600,365.32 and Y=395,923.79; Southeasterly on an arc having a radius of 39,526.22 feet and a center at X=2,601,719.78 and Y=435,426.80 to a point having coordinates of X=2,601,353.29 and Y=395,902.28; Southeasterly on an arc having a radius of 2,851.87 feet and a center at X=2,601,340.13 and Y=393,050.44 to a point having coordinates of X=2,602,475.44 and Y=395,666.59; Southeasterly on an arc having a radius of 4,498.37 feet and a center at X=2,600,588.26 and Y=391,583.22 to a point having coordinates of X=2,603,208.95 and Y=395,239.35; Southeasterly on an arc having a radius of 1,440.34 feet and a center at X=2,602,356.07 and Y=394,078.68 to a point having coordinates of X=2,603,784.94 and Y=393,897.29; Southwesterly on an arc having a radius of 2,739.28 feet and a center at X=2,601,064.22 and Y=394,215.63 to a point having coordinates of X=2,603,389.67 and Y=392,767.90; Southwesterly on an arc having a radius of 2,578.27 feet and a center at X=2,601,253.81 and Y=394,212.04 to a

point having coordinates of X=2,602,181.82 and Y=391,806.58; Northwesterly on an arc having a radius of 1,253.85 feet and a center at X=2,601,813.56 and Y=393,005.13 to a point having coordinates of X=2,601,120.42 and Y=391,960.29; Northwesterly on an arc having a radius of 3,793.67 feet and a center at X=2,603,341.12 and Y=395,036.07 to the Point of Beginning, tract containing approximately **719 acres**, all as more particularly outlined on a plat on file in the Office of Mineral Resources, Department of Natural Resources. All bearings, distances and coordinates are based on Louisiana Coordinate System of 1927, (North or South Zone), where applicable.

NOTE: The above description of the Tract nominated for lease has been provided and corrected, where required, exclusively by the nomination party. Any mineral lease selected from this Tract and awarded by the Louisiana State Mineral Board shall be without warranty of any kind, either express, implied, or statutory, including, but not limited to, the implied warranties of merchantability and fitness for a particular purpose. Should the mineral lease awarded by the Louisiana State Mineral Board be subsequently modified, cancelled or abrogated due to the existence of conflicting leases, operating agreements, private claims or other future obligations or conditions which may affect all or any portion of the leased Tract, it shall not relieve the Lessee of the obligation to pay any bonus due thereon to the Louisiana State Mineral Board, nor shall the Louisiana State Mineral Board be obligated to refund any consideration paid by the Lessor prior to such modification, cancellation, or abrogation, including, but not limited to, bonuses, rentals and royalties.




NOTE: The State of Louisiana does hereby reserve, and this lease shall be subject to, the imprescriptible right of surface use in the nature of a servitude in favor of the Department of Natural Resources, including its Offices and Commissions, for the sole purpose of implementing, constructing, servicing and maintaining approved coastal zone management and/or restoration projects. Utilization of any and all rights derived under this lease by the mineral lessee, its agents, successors or assigns, shall not interfere with nor hinder the reasonable surface use by the Department of Natural Resources, its Offices or Commissions, as herein above reserved.

NOTE: The Department of Wildlife and Fisheries has designated certain areas in the coastal waters of the State of Louisiana as Oyster Seed Bed Areas. The exact location of those Seed Bed Areas must be obtained from the Department of Wildlife and Fisheries and any work done under a mineral lease from the State of Louisiana may necessarily be conducted in conformity with the rules and regulations promulgated by the said Department of Wildlife and Fisheries for Oyster Seed Bed Areas.

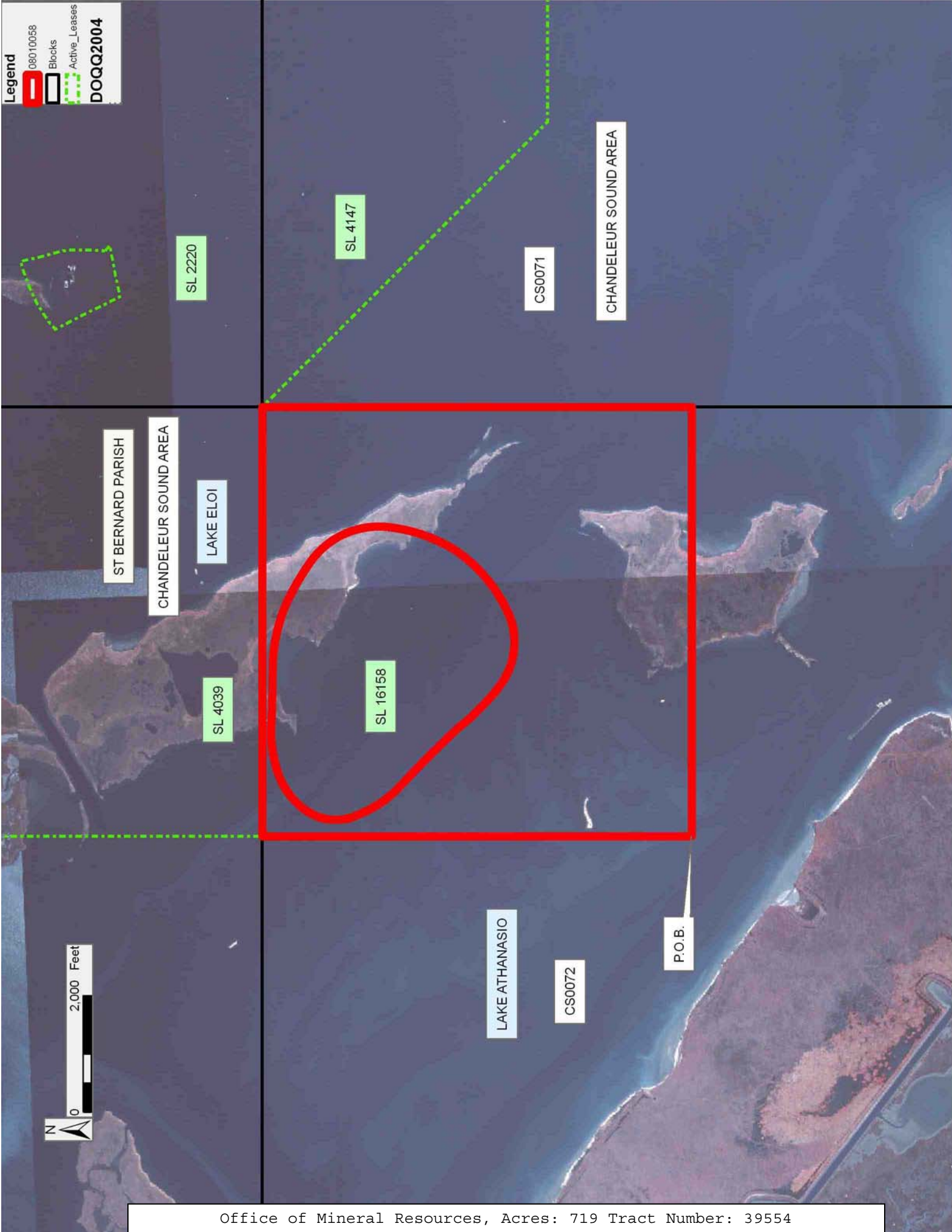
Applicant: MINERAL SERVICES, INC.

Bidder	Cash Payment	Price/Acre	Rental	Oil	Gas	Other

Legend

-  08010058
-  Blocks
-  Active_Leases

DOQQ2004



TRACT 39555 - Portion of Block 72, Chandeleur Sound Area, St. Bernard Parish, Louisiana

All of the lands now or formerly constituting the beds and bottoms of all water bodies of every nature and description as to which title is vested in the State of Louisiana, together with all islands arising therein and other lands formed by accretion or by reliction, where allowed by law, excepting tax adjudicated lands, and not presently under mineral lease on January 9, 2008, situated in St. Bernard Parish, Louisiana, and more particularly described as follows: Beginning at a Point having Coordinates of X = 2,598,475.00 and Y = 388,705.00; thence South 7,375.00 feet to a point on the South line of Block 72, Chandeleur Sound Area having Coordinates of X = 2,598,475.00 and Y = 381,330.00; thence West 7,375.00 feet along the South line of said Block 72, Chandeleur Sound Area to its Southwest corner having Coordinates of X = 2,591,100.00 and Y = 381,330.00; thence North 7,375.00 feet along the said West line of Block 72, Chandeleur Sound Area to a point having Coordinates of X = 2,591,100.00 and Y = 388,705.00; thence East 7,375.00 feet to the point of beginning, containing approximately **222 acres**, all as more particularly outlined on a plat on file in the Office of Mineral Resources, Department of Natural Resources. All bearings, distances and coordinates are based on Louisiana Coordinate System of 1927, (North or South Zone), where applicable.

NOTE: The above description of the Tract nominated for lease has been provided and corrected, where required, exclusively by the nomination party. Any mineral lease selected from this Tract and awarded by the Louisiana State Mineral Board shall be without warranty of any kind, either express, implied, or statutory, including, but not limited to, the implied warranties of merchantability and fitness for a particular purpose. Should the mineral lease awarded by the Louisiana State Mineral Board be subsequently modified, cancelled or abrogated due to the existence of conflicting leases, operating agreements, private claims or other future obligations or conditions which may affect all or any portion of the leased Tract, it shall not relieve the Lessee of the obligation to pay any bonus due thereon to the Louisiana State Mineral Board, nor shall the Louisiana State Mineral Board be obligated to refund any consideration paid by the Lessor prior to such modification, cancellation, or abrogation, including, but not limited to, bonuses, rentals and royalties.

NOTE: The State of Louisiana does hereby reserve, and this lease shall be subject to, the imprescriptible right of surface use in the nature of a servitude in favor of the Department of Natural Resources, including its Offices and Commissions, for the sole purpose of implementing, constructing, servicing and maintaining approved coastal zone management and/or restoration projects. Utilization of any and all rights derived under this lease by the mineral lessee, its agents, successors or assigns, shall not interfere with nor hinder the reasonable surface use by the Department of Natural Resources, its Offices or Commissions, as herein above reserved.

NOTE: It appears, according to our records, that a portion of this Tract is located within the restrictive safety fairway area as set out by the Corps of Engineers, U.S. Army and/or the restrictive anchorage area as set out by the U.S. Coast Guard.

NOTE: The Department of Wildlife and Fisheries has designated certain areas in the coastal waters of the State of Louisiana as Oyster Seed Bed Areas. The exact location of those Seed Bed Areas must be obtained from the Department of Wildlife and Fisheries and any work done under a mineral lease from the State of Louisiana may necessarily be conducted in conformity with the rules and regulations promulgated by the said Department of Wildlife and Fisheries for Oyster Seed Bed Areas.

Applicant: MINERAL SERVICES, INC.

Bidder	Cash Payment	Price/Acre	Rental	Oil	Gas	Other



ST BERNARD PARISH

LAKE ATHANASIO

CHANDELEUR SOUND AREA

P.O.B.

T16S - R17E

LAKE MACHIAS



TRACT 39556 - Portion of Block 72, Chandeleur Sound Area, St. Bernard Parish, Louisiana

All of the lands now or formerly constituting the beds and bottoms of all water bodies of every nature and description as to which title is vested in the State of Louisiana, together with all islands arising therein and other lands formed by accretion or by reliction, where allowed by law, excepting tax adjudicated lands, and not presently under mineral lease on January 9, 2008, situated in St. Bernard Parish, Louisiana, and more particularly described as follows: Beginning at a Point having Coordinates of X = 2,598,475.00 and Y = 388,705.00; thence East 7,375.00 feet to a point on the East line of Block 72, Chandeleur Sound Area having Coordinates of X = 2,605,850.00 and Y = 388,705.00; thence South 7,375.00 feet along the said East line of Block 72, Chandeleur Sound Area to its Southeast corner having Coordinates of X = 2,605,850.00 and Y = 381,330.00; thence West 7,375.00 feet along the South line of said Block 72, Chandeleur Sound Area to a point having Coordinates of X = 2,598,475.00 and Y = 381,330.00; thence North 7,375.00 feet to the point of beginning, containing approximately **601 acres**, all as more particularly outlined on a plat on file in the Office of Mineral Resources, Department of Natural Resources. All bearings, distances and coordinates are based on Louisiana Coordinate System of 1927, (North or South Zone), where applicable.

NOTE: The above description of the Tract nominated for lease has been provided and corrected, where required, exclusively by the nomination party. Any mineral lease selected from this Tract and awarded by the Louisiana State Mineral Board shall be without warranty of any kind, either express, implied, or statutory, including, but not limited to, the implied warranties of merchantability and fitness for a particular purpose. Should the mineral lease awarded by the Louisiana State Mineral Board be subsequently modified, cancelled or abrogated due to the existence of conflicting leases, operating agreements, private claims or other future obligations or conditions which may affect all or any portion of the leased Tract, it shall not relieve the Lessee of the obligation to pay any bonus due thereon to the Louisiana State Mineral Board, nor shall the Louisiana State Mineral Board be obligated to refund any consideration paid by the Lessor prior to such modification, cancellation, or abrogation, including, but not limited to, bonuses, rentals and royalties.

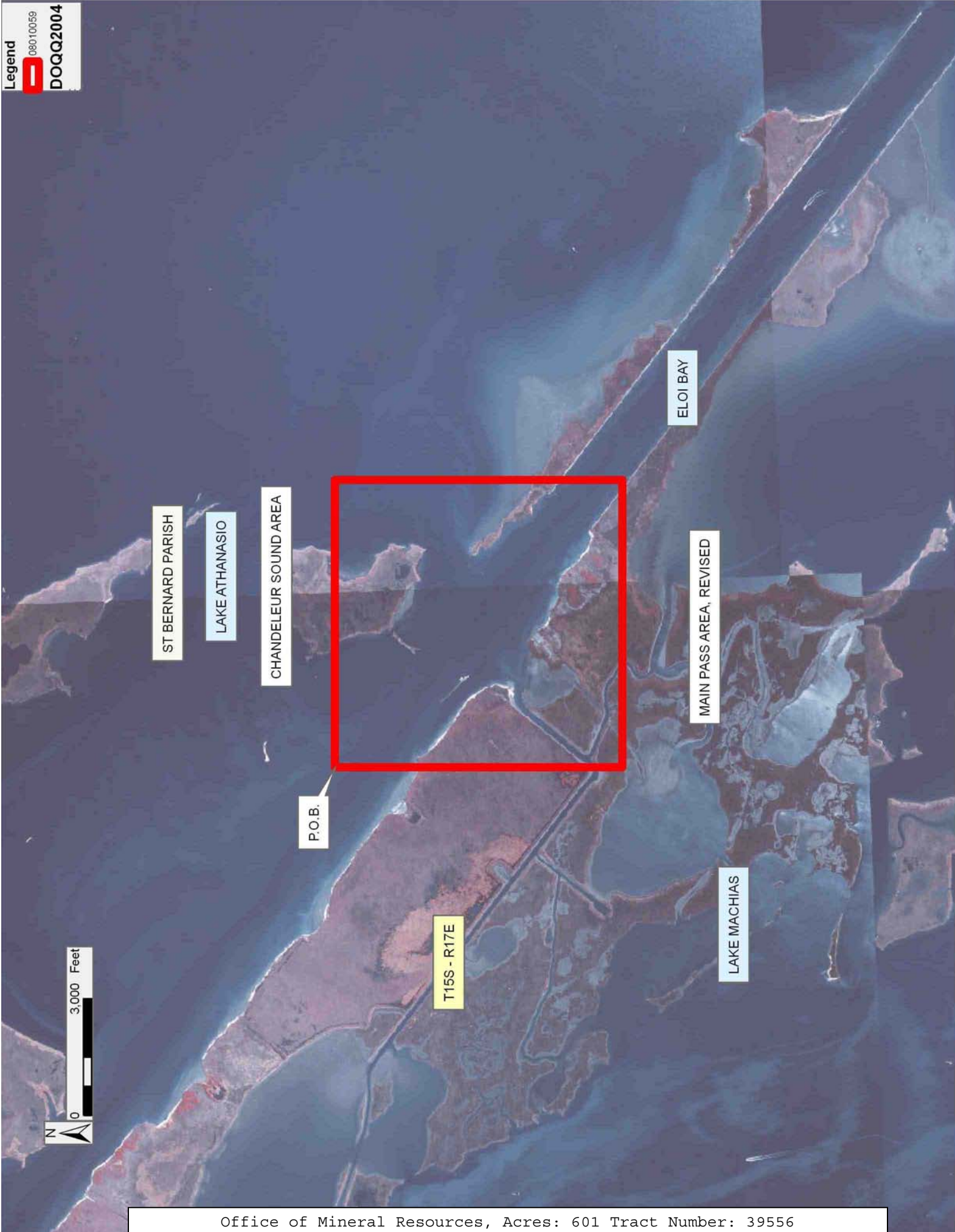
NOTE: The State of Louisiana does hereby reserve, and this lease shall be subject to, the imprescriptible right of surface use in the nature of a servitude in favor of the Department of Natural Resources, including its Offices and Commissions, for the sole purpose of implementing, constructing, servicing and maintaining approved coastal zone management and/or restoration projects. Utilization of any and all rights derived under this lease by the mineral lessee, its agents, successors or assigns, shall not interfere with nor hinder the reasonable surface use by the Department of Natural Resources, its Offices or Commissions, as herein above reserved.

NOTE: It appears, according to our records, that a portion of this Tract is located within the restrictive safety fairway area as set out by the Corps of Engineers, U.S. Army and/or the restrictive anchorage area as set out by the U.S. Coast Guard.

NOTE: The Department of Wildlife and Fisheries has designated certain areas in the coastal waters of the State of Louisiana as Oyster Seed Bed Areas. The exact location of those Seed Bed Areas must be obtained from the Department of Wildlife and Fisheries and any work done under a mineral lease from the State of Louisiana may necessarily be conducted in conformity with the rules and regulations promulgated by the said Department of Wildlife and Fisheries for Oyster Seed Bed Areas.

Applicant: MINERAL SERVICES, INC.

Bidder	Cash Payment	Price/Acre	Rental	Oil	Gas	Other



TRACT 39557 - Lafourche and Terrebonne Parishes, Louisiana

All of the lands now or formerly constituting the beds and bottoms of all water bodies of every nature and description as to which title is vested in the State of Louisiana, together with all islands arising therein and other lands formed by accretion or by reliction, where allowed by law, excepting tax adjudicated lands, and not presently under mineral lease on January 9, 2008, situated in Lafourche and Terrebonne Parishes, Louisiana, and more particularly described as follows: Beginning at a point having Coordinates of X = 2,226,032.05 and Y = 335,025.65; thence North 02 degrees 50 minutes 29 seconds West 454.91 feet to an interior corner of State Lease No. 17889 having Coordinates of X = 2,226,009.50 and Y = 335,480.00; thence North 02 degrees 50 minutes 29 seconds West 1,129.12 feet along an interior boundary of said State Lease No. 17889 to the Southwest corner of the Northern portion of State Lease No. 17534, as amended, having Coordinates of X = 2,225,953.53 and Y = 336,607.73; thence along the boundary of the Northern portion of said State Lease No. 17534 the following courses: North 88 degrees 54 minutes 18 seconds East 1,430.99 feet to its Southeast corner having Coordinates of X = 2,227,384.25 and Y = 336,635.08; North 01 degrees 11 minutes 48 seconds West 3,387.00 feet to its Northeast corner having Coordinates of X = 2,227,313.52 and Y = 340,021.34 and South 88 degrees 55 minutes 10 seconds West 1,528.25 feet to its Northwest corner, also being a point on said interior boundary of State Lease No. 17889 having Coordinates of X = 2,225,785.54 and Y = 339,992.52; thence along said interior boundary of State Lease No. 17889 the following courses: North 02 degrees 50 minutes 29 seconds West 307.02 feet to a point having Coordinates of X = 2,225,770.32 and Y = 340,299.16; North 88 degrees 00 minutes 00 seconds East 2,640.00 feet to a point having Coordinates of X = 2,228,408.71 and Y = 340,391.29 and South 02 degrees 50 minutes 29 seconds East 4,917.34 feet to a point having Coordinates of X = 2,228,652.47 and Y = 335,480.00; thence South 02 degrees 50 minutes 30 seconds East 362.66 feet to a point having Coordinates of X = 2,228,670.45 and Y = 335,117.79; thence South 88 degrees 00 minutes 00 seconds West 63.42 feet to the Southeast corner of the Southern portion of said State Lease No. 17534 having Coordinates of X = 2,228,607.07 and Y = 335,115.58; thence along the boundary of the Southern portion of said State Lease No. 17534 the following courses: North 01 degrees 06 minutes 33 seconds West 1,537.68 feet to its Northeast corner having Coordinates of X = 2,228,577.30 and Y = 336,652.97; South 89 degrees 00 minutes 14 seconds West 970.07 feet to a point having Coordinates of X = 2,227,607.38 and Y = 336,636.11; South 88 degrees 53 minutes 23 seconds West 1,320.75 feet to its Northwest corner having Coordinates of X = 2,226,286.88 and Y = 336,610.52; South 01 degrees 15 minutes 51 seconds East 1,315.60 feet to a point having Coordinates of X = 2,226,315.90 and Y = 335,295.24 and South 01 degrees 06 minutes 33 seconds East 259.55 feet to its Southwest corner having Coordinates of X = 2,226,320.93 and Y = 335,035.74; thence South 88 degrees 00 minutes 00 seconds West 289.05 feet to the point of beginning, containing approximately **1.966 acres**, all as more particularly outlined on a plat on file in the Office of Mineral Resources, Department of Natural Resources.

All bearings, distances and coordinates are based on Louisiana Coordinate System of 1927, (North or South Zone), where applicable.

NOTE: The above description of the Tract nominated for lease has been provided and corrected, where required, exclusively by the nomination party. Any mineral lease selected from this Tract and awarded by the Louisiana State Mineral Board shall be without warranty of any kind, either express, implied, or statutory, including, but not limited to, the implied warranties of merchantability and fitness for a particular purpose. Should the mineral lease awarded by the Louisiana State Mineral Board be subsequently modified, cancelled or abrogated due to the existence of conflicting leases, operating agreements, private claims or other future obligations or conditions which may affect all or any portion of the leased Tract, it shall not relieve the Lessee of the obligation to pay any bonus due thereon to the Louisiana State Mineral Board, nor shall the Louisiana State Mineral Board be obligated to refund any consideration paid by the Lessor prior to such modification, cancellation, or abrogation, including, but not limited to, bonuses, rentals and royalties.

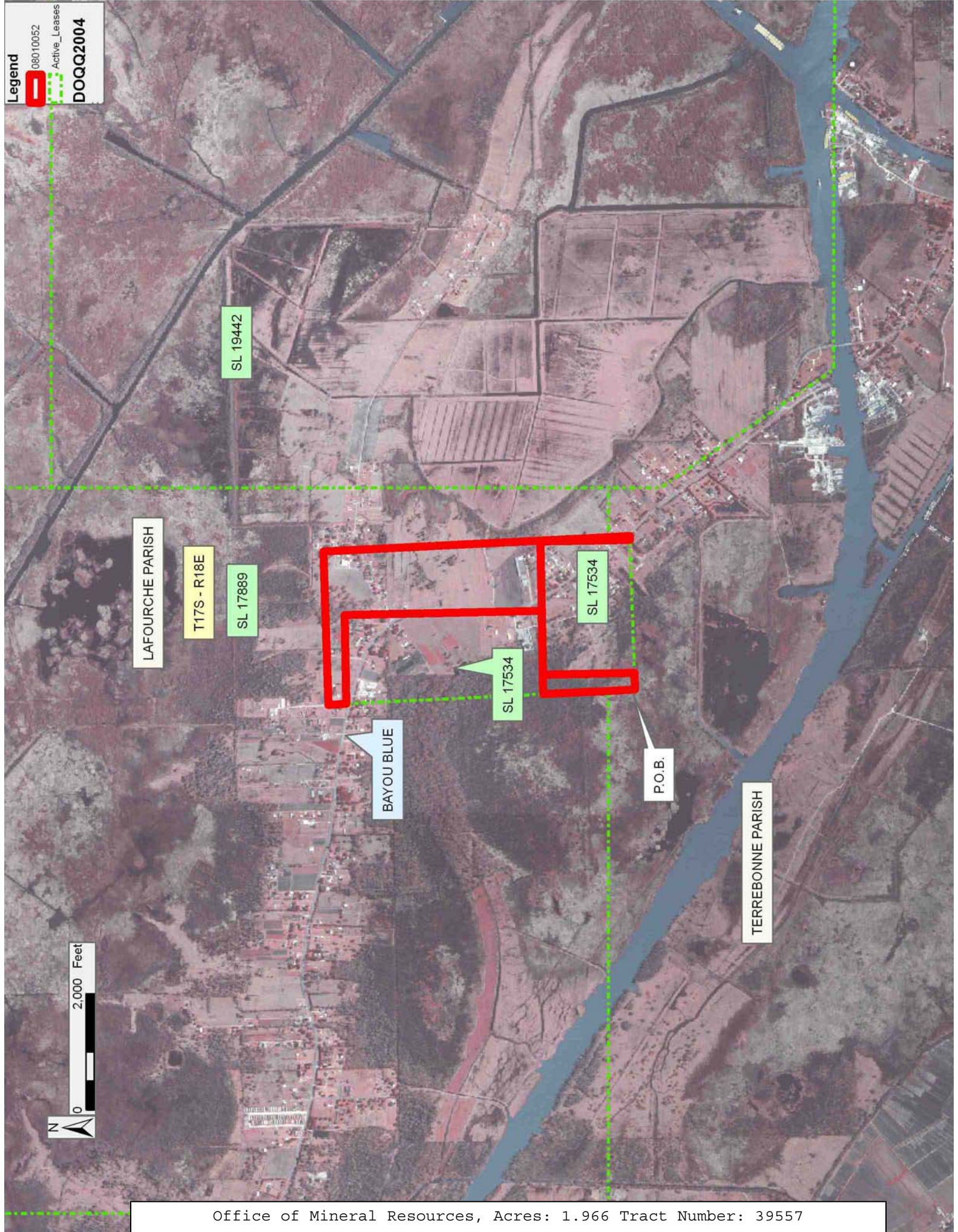
NOTE: The State of Louisiana does hereby reserve, and this lease shall be subject to, the imprescriptible right of surface use in the nature of a servitude in favor of the Department of Natural Resources, including its Offices and Commissions, for the sole purpose of implementing, constructing, servicing and maintaining approved coastal zone management and/or restoration projects. Utilization of any and all rights derived under this lease by the mineral lessee, its agents, successors or assigns, shall not interfere with nor hinder the reasonable surface use by the Department of Natural Resources, its Offices or Commissions, as herein above reserved.

Applicant: ROBERT A. SCHROEDER, INC.

Bidder	Cash Payment	Price/Acre	Rental	Oil	Gas	Other

Legend

08010052
Active_Leases
DOQQ2004



TRACT 39558 - Lafourche and Terrebonne Parishes, Louisiana

All of the lands now or formerly constituting the beds and bottoms of all water bodies of every nature and description as to which title is vested in the State of Louisiana, together with all islands arising therein and other lands formed by accretion or by reliction, where allowed by law, excepting tax adjudicated lands, and not presently under mineral lease on January 9, 2008, situated in Lafourche and Terrebonne Parishes, Louisiana, and more particularly described as follows: Beginning at an interior corner of State Lease No. 17889 having Coordinates of X = 2,226,009.50 and Y = 335,480.00; thence South 02 degrees 50 minutes 29 seconds East 454.91 feet to a point having Coordinates of X = 2,226,032.05 and Y = 335,025.65; thence North 88 degrees 00 minutes 00 seconds East 289.05 feet to the Southwest corner of the Southern portion of State Lease No. 17534, as amended, having Coordinates of X = 2,226,320.93 and Y = 335,035.74; thence North 88 degrees 00 minutes 00 seconds East 2,287.53 feet along the Southern boundary of the Southern portion of said State Lease No. 17534 to its Southeast corner having Coordinates of X = 2,228,607.07 and Y = 335,115.58; thence North 88 degrees 00 minutes 11 seconds East 63.42 feet to a point having Coordinates of X = 2,228,670.45 and Y = 335,117.79; thence North 02 degrees 50 minutes 30 seconds West 362.66 feet to a point on the Southern boundary of said State Lease No. 17889 having Coordinates of X = 2,228,652.47 and Y = 335,480.00; thence East 847.53 feet along the Southern boundary of said State Lease No. 17889 to a point on the Western boundary of State Lease No. 19442 having Coordinates of X = 2,229,500.00 and Y = 335,480.00; thence along the boundary of said State Lease No. 19442 the following courses: South 887.15 feet to a point having Coordinates of X = 2,229,500.00 and Y = 334,592.85 and South 34 degrees 20 minutes 53 seconds East 3,611.04 feet to its Southernmost Southwest corner having Coordinates of X = 2,231,537.41 and Y = 331,611.48; thence South 34 degrees 20 minutes 53 seconds East 731.26 feet to a point having Coordinates of X = 2,231,950.00 and Y = 331,007.73; thence South 4,796.25 feet to a point having Coordinates of X = 2,231,950.00 and Y = 326,211.48; thence West 14,930.00 feet to a point having Coordinates of X = 2,217,020.00 and Y = 326,211.48; thence North 9,268.52 feet to the Southwest corner of said State Lease No. 17889 having Coordinates of X = 2,217,020.00 and Y = 335,480.00; thence East 8,989.50 feet along the Southern boundary of said State Lease No. 17889 to the point of beginning, containing approximately **20 acres**, all as more particularly outlined on a plat on file in the Office of Mineral Resources, Department of Natural Resources. All bearings, distances and coordinates are based on Louisiana Coordinate System of 1927, (North or South Zone), where applicable.

NOTE: The above description of the Tract nominated for lease has been provided and corrected, where required, exclusively by the nomination party. Any mineral lease selected from this Tract and awarded by the Louisiana State Mineral Board shall be without warranty of any kind, either express, implied, or statutory, including, but not limited to, the implied warranties of merchantability and fitness for a particular purpose. Should the mineral lease awarded by the Louisiana State Mineral

Board be subsequently modified, cancelled or abrogated due to the existence of conflicting leases, operating agreements, private claims or other future obligations or conditions which may affect all or any portion of the leased Tract, it shall not relieve the Lessee of the obligation to pay any bonus due thereon to the Louisiana State Mineral Board, nor shall the Louisiana State Mineral Board be obligated to refund any consideration paid by the Lessor prior to such modification, cancellation, or abrogation, including, but not limited to, bonuses, rentals and royalties.

NOTE: The State of Louisiana does hereby reserve, and this lease shall be subject to, the imprescriptible right of surface use in the nature of a servitude in favor of the Department of Natural Resources, including its Offices and Commissions, for the sole purpose of implementing, constructing, servicing and maintaining approved coastal zone management and/or restoration projects. Utilization of any and all rights derived under this lease by the mineral lessee, its agents, successors or assigns, shall not interfere with nor hinder the reasonable surface use by the Department of Natural Resources, its Offices or Commissions, as herein above reserved.

Applicant: ROBERT A. SCHROEDER, INC.

Bidder	Cash Payment	Price/Acre	Rental	Oil	Gas	Other

Legend

- 08010053
- Active_Leases
- Counties
- DOQQ2004



TRACT 39559 - Portion of Blocks 49, and 50, Main Pass Area, Revised, Plaquemines Parish, Louisiana

All of the lands now or formerly constituting the beds and bottoms of all water bodies of every nature and description as to which title is vested in the State of Louisiana, together with all islands arising therein and other lands formed by accretion or by reliction, where allowed by law, excepting tax adjudicated lands, and not presently under mineral lease on January 9, 2008, situated in Plaquemines Parish, Louisiana, and more particularly described as follows: Beginning at a point on the Eastern boundary of State Lease No. 18869 having Coordinates of X = 2,617,458.12 and Y = 271,480.00; thence East 10,414.88 feet to a point having Coordinates of X = 2,627,873.00 and Y = 271,480.00; thence South 8,024.40 feet to a point on the Northern boundary of the Price Case (Tract A-1) having Coordinates of X = 2,627,873.00 and Y = 263,455.60; thence along the boundary of said Price Case (Tract A-1) the following courses: South 87 degrees 51 minutes 33 seconds West 217.00 feet; North 02 degrees 08 minutes 27 seconds West 660.00 feet; North 49 degrees 30 minutes 00 seconds West 1,370.00 feet; North 73 degrees 00 minutes 00 seconds West 500.00 feet; West 515.00 feet; South 72 degrees 00 minutes 00 seconds West 950.00 feet; North 42 degrees 30 minutes 00 seconds West 1,500.00 feet; South 87 degrees 51 minutes 33 seconds West 6,680.00 feet; South 02 degrees 08 minutes 27 seconds East 5,728.05 feet; South 52 degrees 15 minutes 30 seconds East 295.29 feet and South 55 degrees 47 minutes 36 seconds East 773.74 feet to a point having Coordinates of X = 2,618,091.74 and Y = 259,366.00; thence West 1,278.74 feet to a point having Coordinates of X = 2,616,813.00 and Y = 259,366.00; thence North 10,210.38 feet to a point on the Eastern boundary of said State Lease No. 18869 having Coordinates of X = 2,616,813.00 and Y = 269,576.38; thence North 18 degrees 43 minutes 16 seconds East 2,009.96 feet along the Eastern boundary of said State Lease No. 18869 to the point of beginning, **LESS AND EXCEPT** that portion, if any, of the Price Case that may lie within the above described tract, containing approximately **1,384 acres**, all as more particularly outlined on a plat on file in the Office of Mineral Resources, Department of Natural Resources. All bearings, distances and coordinates are based on Louisiana Coordinate System of 1927, (North or South Zone), where applicable.

NOTE: The above description of the Tract nominated for lease has been provided and corrected, where required, exclusively by the nomination party. Any mineral lease selected from this Tract and awarded by the Louisiana State Mineral Board shall be without warranty of any kind, either express, implied, or statutory, including, but not limited to, the implied warranties of merchantability and fitness for a particular purpose. Should the mineral lease awarded by the Louisiana State Mineral Board be subsequently modified, cancelled or abrogated due to the existence of conflicting leases, operating agreements, private claims or other future obligations or conditions which may affect all or any portion of the leased Tract, it shall not relieve the Lessee of the obligation to pay any bonus due thereon to the Louisiana State Mineral Board, nor shall

the Louisiana State Mineral Board be obligated to refund any consideration paid by the Lessor prior to such modification, cancellation, or abrogation, including, but not limited to, bonuses, rentals and royalties.

NOTE: The State of Louisiana does hereby reserve, and this lease shall be subject to, the imprescriptible right of surface use in the nature of a servitude in favor of the Department of Natural Resources, including its Offices and Commissions, for the sole purpose of implementing, constructing, servicing and maintaining approved coastal zone management and/or restoration projects. Utilization of any and all rights derived under this lease by the mineral lessee, its agents, successors or assigns, shall not interfere with nor hinder the reasonable surface use by the Department of Natural Resources, its Offices or Commissions, as herein above reserved.

NOTE: The Department of Wildlife and Fisheries has designated certain areas in the coastal waters of the State of Louisiana as Oyster Seed Bed Areas. The exact location of those Seed Bed Areas must be obtained from the Department of Wildlife and Fisheries and any work done under a mineral lease from the State of Louisiana may necessarily be conducted in conformity with the rules and regulations promulgated by the said Department of Wildlife and Fisheries for Oyster Seed Bed Areas.

Applicant: HAROLD J. ANDERSON, INC.

Bidder	Cash Payment	Price/Acre	Rental	Oil	Gas	Other

080100.40

Blocks

Active_Leases

DOQQ2004

PLAQUEMINES PARISH

GULF OF MEXICO

MAIN PASS AREA, REVISED

PRICE CASE

MP0049

P.O.B.

T19S - R18E

SL 18869

MP0050

4,000 Feet



TRACT 39560 - Portion of Blocks 48, and 49, Main Pass Area, Revised, Plaquemines Parish, Louisiana

All of the lands now or formerly constituting the beds and bottoms of all water bodies of every nature and description as to which title is vested in the State of Louisiana, together with all islands arising therein and other lands formed by accretion or by reliction, where allowed by law, excepting tax adjudicated lands, and not presently under mineral lease on January 9, 2008, situated in Plaquemines Parish, Louisiana, and more particularly described as follows: Beginning at a point having Coordinates of X = 2,627,873.00 and Y = 271,480.00; thence East 10,307.00 feet to a point having Coordinates of X = 2,638,180.00 and Y = 271,480.00; thence South 4,342.14 feet to a point on the boundary of the Price Case (Tract C-2) having Coordinates of X = 2,638,180.00 and Y = 267,137.86; thence along the boundary of said Price Case (Tract C-2) the following courses: North 52 degrees 45 minutes 00 seconds West 189.20 feet; North 46 degrees 15 minutes 00 seconds West 1,381.76 feet and North 62 degrees 34 minutes 59 seconds West 1,894.00 feet to a point on the boundary of Price Case (Tract A-2) having Coordinates of X = 2,635,350.00 and Y = 269,080.00; thence along the boundary of said Price Case (Tract A-2) the following courses: North 65 degrees 30 minutes 00 seconds West 700.00 feet; South 60 degrees 00 minutes 00 seconds West 900.00 feet; South 35 degrees 00 minutes 00 seconds West 600.00 feet; North 58 degrees 00 minutes 00 seconds East 1,000.00 feet; North 79 degrees 00 minutes 00 seconds East 600.00 feet and South 51 degrees 00 minutes 00 seconds East 416.29 feet to a point on the boundary of the Price Case (Tract C-2) having Coordinates of X = 2,635,350.00 and Y = 268,811.22; thence along the boundary of said Price Case (Tract C-2) the following courses: South 31.22 feet; South 56 degrees 00 minutes 00 seconds East 1,575.00 feet; South 24 degrees 35 minutes 00 seconds East 1,567.00 feet and South 87 degrees 32 minutes 05 seconds West 169.87 feet to a point having Coordinates of X = 2,637,137.92 and Y = 266,467.00; thence South 87 degrees 32 minutes 05 seconds West 1,039.46 feet to a point on the boundary of the Price Case (Tract C-1) having Coordinates of X = 2,636,099.43 and Y = 266,422.29; thence South 87 degrees 32 minutes 05 seconds West 608.44 feet along the North boundary of said Price Case (Tract C-1) to a point on the Price Case (Tract A-1) having Coordinates of X = 2,635,491.55 and Y = 266,396.12; thence along the boundary of said Price Case (Tract A-1) the following courses: South 63 degrees 35 minutes 56 seconds West 724.66 feet; North 80 degrees 00 minutes 00 seconds West 700.00 feet; South 40 degrees 00 minutes 00 seconds West 1,960.00 feet; South 02 degrees 08 minutes 27 seconds East 1,050.00 feet and South 87 degrees 51 minutes 33 seconds West 5,063.00 feet to a point having Coordinates of X = 2,627,873.00 and Y = 263,455.60; thence North 8,024.40 feet to the point of beginning, **LESS AND EXCEPT** that portion, if any, of the Price Case, that may lie within the above described tract, containing approximately **1,429 acres**, all as more particularly outlined on a plat on file in the Office of Mineral Resources, Department of Natural Resources. All bearings, distances and coordinates are based on Louisiana Coordinate System of 1927, (North or South Zone), where applicable.

NOTE: The above description of the Tract nominated for lease has been provided and corrected, where required, exclusively by the nomination party. Any mineral lease selected from this Tract and awarded by the Louisiana State Mineral Board shall be without warranty of any kind, either express, implied, or statutory, including, but not limited to, the implied warranties of merchantability and fitness for a particular purpose. Should the mineral lease awarded by the Louisiana State Mineral Board be subsequently modified, cancelled or abrogated due to the existence of conflicting leases, operating agreements, private claims or other future obligations or conditions which may affect all or any portion of the leased Tract, it shall not relieve the Lessee of the obligation to pay any bonus due thereon to the Louisiana State Mineral Board, nor shall the Louisiana State Mineral Board be obligated to refund any consideration paid by the Lessor prior to such modification, cancellation, or abrogation, including, but not limited to, bonuses, rentals and royalties.

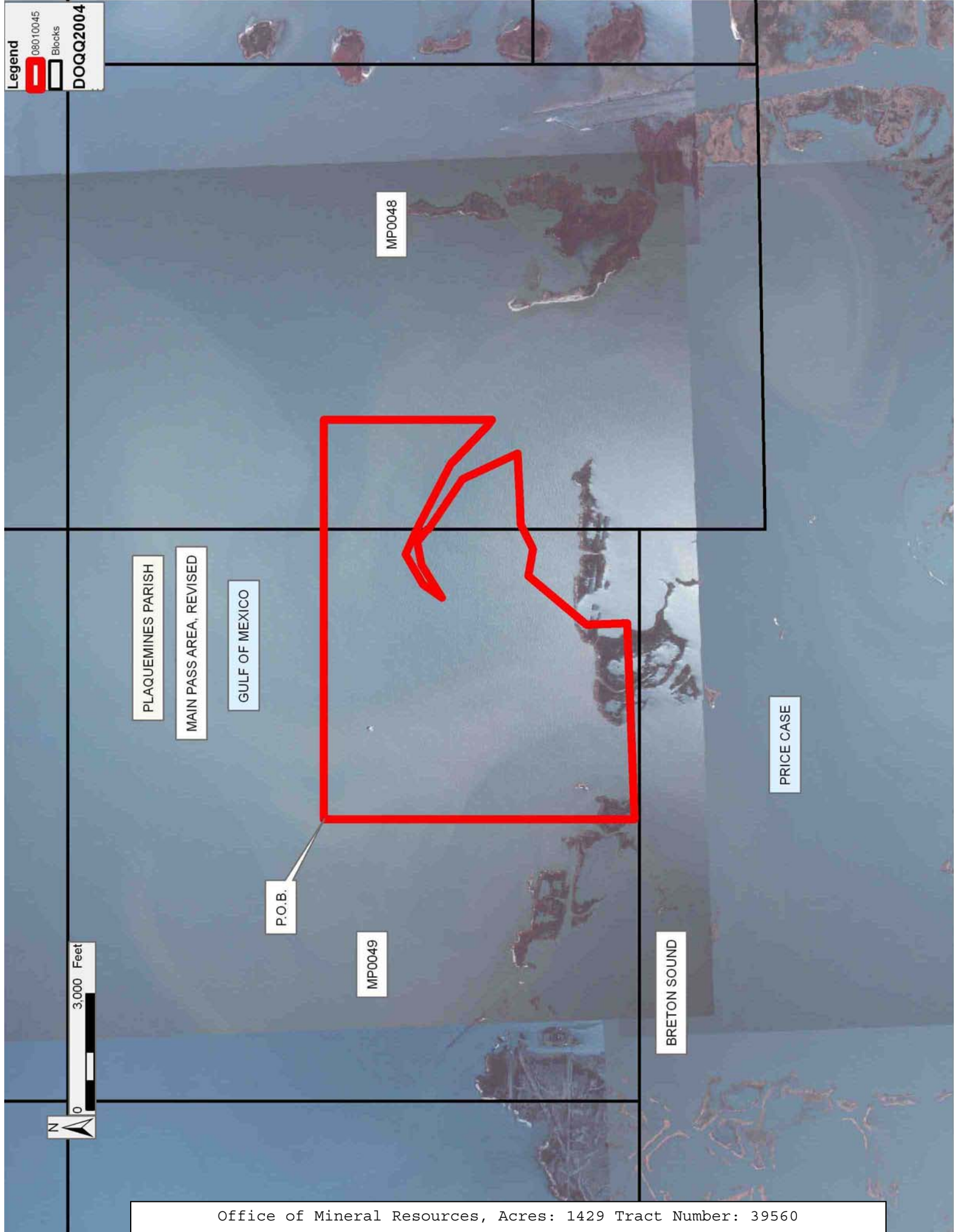
NOTE: The State of Louisiana does hereby reserve, and this lease shall be subject to, the imprescriptible right of surface use in the nature of a servitude in favor of the Department of Natural Resources, including its Offices and Commissions, for the sole purpose of implementing, constructing, servicing and maintaining approved coastal zone management and/or restoration projects. Utilization of any and all rights derived under this lease by the mineral lessee, its agents, successors or assigns, shall not interfere with nor hinder the reasonable surface use by the Department of Natural Resources, its Offices or Commissions, as herein above reserved.

NOTE: The Department of Wildlife and Fisheries has designated certain areas in the coastal waters of the State of Louisiana as Oyster Seed Bed Areas. The exact location of those Seed Bed Areas must be obtained from the Department of Wildlife and Fisheries and any work done under a mineral lease from the State of Louisiana may necessarily be conducted in conformity with the rules and regulations promulgated by the said Department of Wildlife and Fisheries for Oyster Seed Bed Areas.

Applicant: HAROLD J. ANDERSON, INC.

Bidder	Cash Payment	Price/Acre	Rental	Oil	Gas	Other

Legend
08010045
Blocks
DOQQ2004



TRACT 39561 - Portion of Blocks 47, 48, and 52, Main Pass Area, Revised, Plaquemines Parish, Louisiana

All of the lands now or formerly constituting the beds and bottoms of all water bodies of every nature and description as to which title is vested in the State of Louisiana, together with all islands arising therein and other lands formed by accretion or by reliction, where allowed by law, excepting tax adjudicated lands, and not presently under mineral lease on January 9, 2008, situated in Plaquemines Parish, Louisiana, and more particularly described as follows: Beginning at a point having Coordinates of X = 2,638,180.00 and Y = 271,480.00; thence East 11,845.00 feet to the Northwest corner of State Lease No. 1268, as amended, having Coordinates of X = 2,650,025.00 and Y = 271,480.00; thence South 5,400.00 feet along the West boundary of said State Lease No. 1268 to its Southwest corner having Coordinates of X = 2,650,025.00 and Y = 266,080.00; thence South 50.00 feet to a point on the North boundary of State Lease No. 19489 having Coordinates of X = 2,650,025.00 and Y = 266,030.00; thence along the boundary of said State Lease No. 19489 the following courses: West 4,674.00 feet; South 2,680.00 feet and East 4,674.00 feet to a point on its South boundary having Coordinates of X = 2,650,025.00 and Y = 263,350.00; thence South 906.35 feet to a point having Coordinates of X = 2,650,025.00 and Y = 262,443.65; thence South 88 degrees 25 minutes 24 seconds West 309.19 feet to a point having Coordinates of X = 2,649,715.93 and Y = 262,435.14; thence North 38 degrees 22 minutes 09 seconds West 703.86 feet to a point having Coordinates of X = 2,649,279.03 and Y = 262,986.98; thence South 89 degrees 59 minutes 56 seconds West 7,146.12 feet to a point on the Eastern boundary of the Price Case (Tract C-2) having Coordinates of X = 2,642,132.91 and Y = 262,986.85; thence along the boundary of said Price Case (Tract C-2) the following courses: North 41 degrees 40 minutes 00 seconds West 4,741.75 feet to a point having Coordinates of X = 2,638,980.62 and Y = 266,529.06 and North 52 degrees 45 minutes 00 seconds West 1,005.80 feet to a point having Coordinates of X = 2,638,180.00 and Y = 267,137.86; thence North 4,342.14 feet to the point of beginning, containing approximately **1,829.70 acres**, all as more particularly outlined on a plat on file in the Office of Mineral Resources, Department of Natural Resources. All bearings, distances and coordinates are based on Louisiana Coordinate System of 1927, (North or South Zone), where applicable.

NOTE: The above description of the Tract nominated for lease has been provided and corrected, where required, exclusively by the nomination party. Any mineral lease selected from this Tract and awarded by the Louisiana State Mineral Board shall be without warranty of any kind, either express, implied, or statutory, including, but not limited to, the implied warranties of merchantability and fitness for a particular purpose. Should the mineral lease awarded by the Louisiana State Mineral Board be subsequently modified, cancelled or abrogated due to the existence of conflicting leases, operating agreements, private claims or other future obligations or conditions which may affect all or any portion of the leased Tract, it shall not relieve the Lessee of the obligation to

pay any bonus due thereon to the Louisiana State Mineral Board, nor shall the Louisiana State Mineral Board be obligated to refund any consideration paid by the Lessor prior to such modification, cancellation, or abrogation, including, but not limited to, bonuses, rentals and royalties.

NOTE: The State of Louisiana does hereby reserve, and this lease shall be subject to, the imprescriptible right of surface use in the nature of a servitude in favor of the Department of Natural Resources, including its Offices and Commissions, for the sole purpose of implementing, constructing, servicing and maintaining approved coastal zone management and/or restoration projects. Utilization of any and all rights derived under this lease by the mineral lessee, its agents, successors or assigns, shall not interfere with nor hinder the reasonable surface use by the Department of Natural Resources, its Offices or Commissions, as herein above reserved.

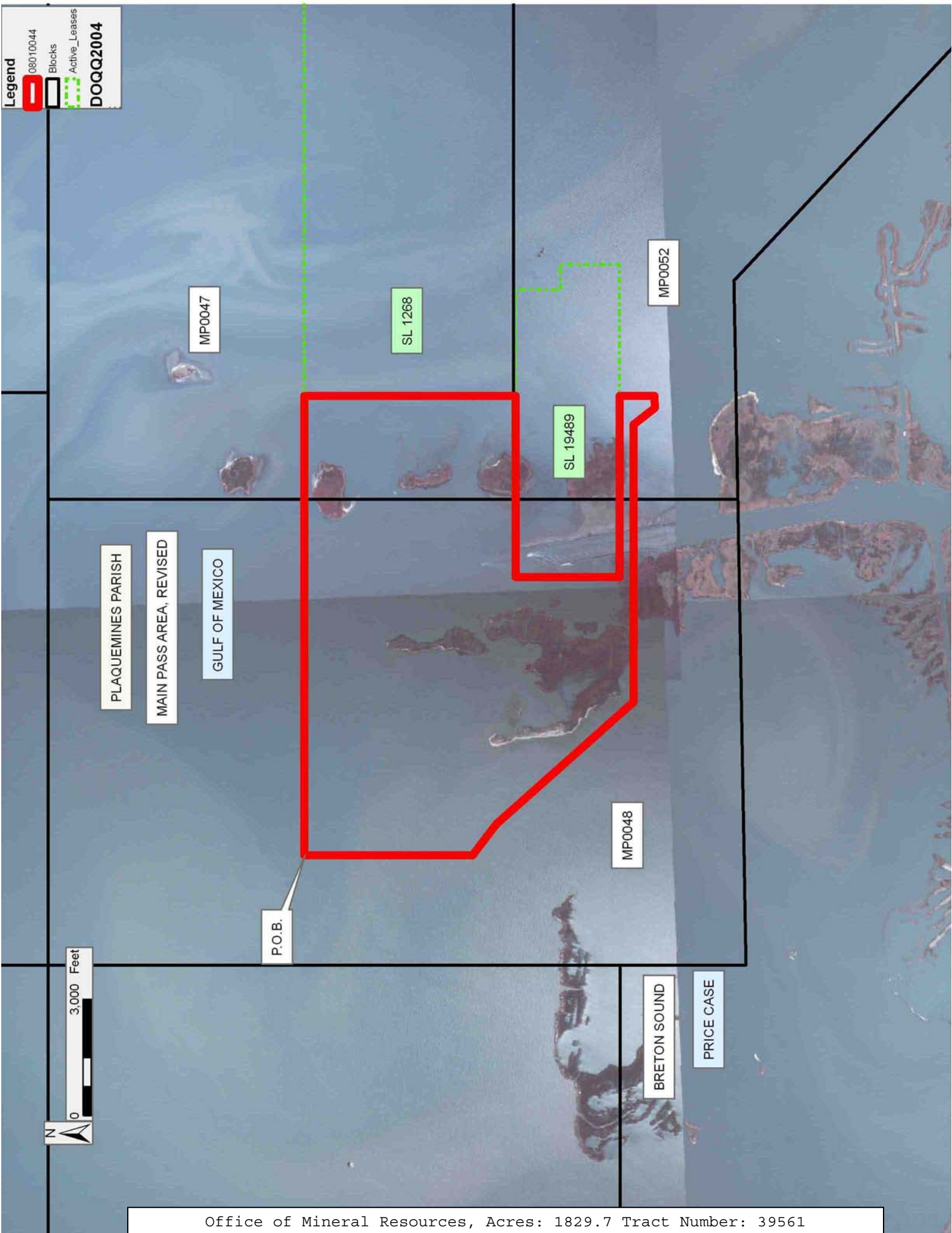
NOTE: The Department of Wildlife and Fisheries has designated certain areas in the coastal waters of the State of Louisiana as Oyster Seed Bed Areas. The exact location of those Seed Bed Areas must be obtained from the Department of Wildlife and Fisheries and any work done under a mineral lease from the State of Louisiana may necessarily be conducted in conformity with the rules and regulations promulgated by the said Department of Wildlife and Fisheries for Oyster Seed Bed Areas.

Applicant: HAROLD J. ANDERSON, INC.

Bidder	Cash Payment	Price/Acre	Rental	Oil	Gas	Other

Legend

- 08010044
- Blocks
- Active_Leases
- DOQQ2004**



TRACT 39562 - Portion of Block 48, Main Pass Area, Revised, Plaquemines Parish, Louisiana

All of the lands now or formerly constituting the beds and bottoms of all water bodies of every nature and description as to which title is vested in the State of Louisiana, together with all islands arising therein and other lands formed by accretion or by reliction, where allowed by law, excepting tax adjudicated lands, and not presently under mineral lease on January 9, 2008, situated in Plaquemines Parish, Louisiana, and more particularly described as follows: Beginning at the Northernmost point of the Price Case (Tract C-2) having Coordinates of X = 2,635,350.00 and Y = 269,080.00; thence along the boundary of said Price Case (Tract C-2) the following courses: South 62 degrees 34 minutes 59 seconds East 1,894.00 feet to a point having Coordinates of X = 2,637,031.26 and Y = 268,207.88; South 46 degrees 15 minutes 00 seconds East 1,381.76 feet to a point having Coordinates of X = 2,638,029.40 and Y = 267,252.38; South 52 degrees 45 minutes 00 seconds East 1,195.00 feet to a point having Coordinates of X = 2,638,980.62 and Y = 266,529.06; South 41 degrees 40 minutes 00 seconds East 6,845.00 feet to a point having Coordinates of X = 2,643,531.15 and Y = 261,415.67 and South 15 degrees 30 minutes 00 seconds East 1,219.72 feet to a point having Coordinates of X = 2,643,857.10 and Y = 260,240.31; thence South 88 degrees 35 minutes 36 seconds West 587.18 feet to the Southeast corner of State Lease No. 18580 having Coordinates of X = 2,643,270.10 and Y = 260,225.89; thence along the boundary of said State Lease No. 18580 the following courses: North 34 degrees 11 minutes 41 seconds West 3,719.00 feet and South 66 degrees 48 minutes 21 seconds West 1,773.33 feet to its Northwest corner, also being a point on the Western boundary of said Price Case (Tract C-2) having Coordinates of X = 2,639,550.00 and Y = 262,603.58; thence along the boundary of said Price Case (Tract C-2) the following courses: North 1,976.42 feet to a point having Coordinates of X = 2,639,550.00 and Y = 264,580.00; West 1,600.00 feet to a point on the shore of an island having a Coordinate of Y = 264,580.00; thence Northeasterly, Northwesterly and Northerly along said shoreline to a point; thence North 87 degrees 32 minutes 05 seconds East 169.87 feet to a point having Coordinates of X = 2,637,307.63 and Y = 266,474.31; North 24 degrees 35 minutes 00 seconds West 1,567.00 feet to a point having Coordinates of X = 2,636,655.73 and Y = 267,899.27; North 56 degrees 00 minutes 00 seconds West 1,575.00 feet to a point having Coordinates of X = 2,635,350.00 and Y = 268,780.00; North 31.22 feet to the point having Coordinates of X = 2,635,350.00 and Y = 268,811.22 and North 268.78 feet to the point of beginning, containing approximately 282 gross acres and approximately **169.2 net acres**, all as more particularly outlined on a plat on file in the Office of Mineral Resources, Department of Natural Resources. All bearings, distances and coordinates are based on Louisiana Coordinate System of 1927, (North or South Zone), where applicable.

NOTE: The above description of the Tract nominated for lease has been provided and corrected, where required, exclusively by the nomination party. Any mineral lease selected from this Tract and awarded by the

Louisiana State Mineral Board shall be without warranty of any kind, either express, implied, or statutory, including, but not limited to, the implied warranties of merchantability and fitness for a particular purpose. Should the mineral lease awarded by the Louisiana State Mineral Board be subsequently modified, cancelled or abrogated due to the existence of conflicting leases, operating agreements, private claims or other future obligations or conditions which may affect all or any portion of the leased Tract, it shall not relieve the Lessee of the obligation to pay any bonus due thereon to the Louisiana State Mineral Board, nor shall the Louisiana State Mineral Board be obligated to refund any consideration paid by the Lessor prior to such modification, cancellation, or abrogation, including, but not limited to, bonuses, rentals and royalties.

NOTE: The State of Louisiana does hereby reserve, and this lease shall be subject to, the imprescriptible right of surface use in the nature of a servitude in favor of the Department of Natural Resources, including its Offices and Commissions, for the sole purpose of implementing, constructing, servicing and maintaining approved coastal zone management and/or restoration projects. Utilization of any and all rights derived under this lease by the mineral lessee, its agents, successors or assigns, shall not interfere with nor hinder the reasonable surface use by the Department of Natural Resources, its Offices or Commissions, as herein above reserved.

NOTE: The Department of Wildlife and Fisheries has designated certain areas in the coastal waters of the State of Louisiana as Oyster Seed Bed Areas. The exact location of those Seed Bed Areas must be obtained from the Department of Wildlife and Fisheries and any work done under a mineral lease from the State of Louisiana may necessarily be conducted in conformity with the rules and regulations promulgated by the said Department of Wildlife and Fisheries for Oyster Seed Bed Areas.

Applicant: HAROLD J. ANDERSON, INC.

Bidder	Cash Payment	Price/Acre	Rental	Oil	Gas	Other

Legend
08010049
Active_Leases
DOQQ2004

PLAQUEMINES PARISH

MAIN PASS AREA, REVISED

GULF OF MEXICO

SL 18580

BRETON SOUND

PRICE CASE

P.O.B.



TRACT 39563 - Portion of Block 48, Main Pass Area, Revised, Plaquemines Parish, Louisiana

All of the lands now or formerly constituting the beds and bottoms of all water bodies of every nature and description as to which title is vested in the State of Louisiana, together with all islands arising therein and other lands formed by accretion or by reliction, where allowed by law, excepting tax adjudicated lands, and not presently under mineral lease on January 9, 2008, situated in Plaquemines Parish, Louisiana, and more particularly described as follows: Beginning at the Northwest corner of the Price Case (Tract C-1), also being a point within Section 15, Township 19 South, Range 18 East, having Coordinates of X = 2,635,491.55 and Y = 266,396.12; thence South 02 degrees 08 minutes 27 seconds East 750 feet, more or less to the shoreline of a small island; thence Northeasterly along said shoreline to its intersection with the East-West middle line of said Section 15; thence Southwesterly approximately 608 feet along said line to the point of beginning, containing approximately 6 gross acres and approximately **3.6 net acres**, all as more particularly outlined on a plat on file in the Office of Mineral Resources, Department of Natural Resources. All bearings, distances and coordinates are based on Louisiana Coordinate System of 1927, (North or South Zone), where applicable.

NOTE: The above description of the Tract nominated for lease has been provided and corrected, where required, exclusively by the nomination party. Any mineral lease selected from this Tract and awarded by the Louisiana State Mineral Board shall be without warranty of any kind, either express, implied, or statutory, including, but not limited to, the implied warranties of merchantability and fitness for a particular purpose. Should the mineral lease awarded by the Louisiana State Mineral Board be subsequently modified, cancelled or abrogated due to the existence of conflicting leases, operating agreements, private claims or other future obligations or conditions which may affect all or any portion of the leased Tract, it shall not relieve the Lessee of the obligation to pay any bonus due thereon to the Louisiana State Mineral Board, nor shall the Louisiana State Mineral Board be obligated to refund any consideration paid by the Lessor prior to such modification, cancellation, or abrogation, including, but not limited to, bonuses, rentals and royalties.

NOTE: The State of Louisiana does hereby reserve, and this lease shall be subject to, the imprescriptible right of surface use in the nature of a servitude in favor of the Department of Natural Resources, including its Offices and Commissions, for the sole purpose of implementing, constructing, servicing and maintaining approved coastal zone management and/or restoration projects. Utilization of any and all rights derived under this lease by the mineral lessee, its agents, successors or assigns, shall not interfere with nor hinder the reasonable surface use by the Department of Natural Resources, its Offices or Commissions, as herein above reserved.

NOTE: The Department of Wildlife and Fisheries has designated certain areas in the coastal waters of the State of Louisiana as Oyster Seed Bed Areas. The exact location of those Seed Bed Areas must be obtained from the Department of Wildlife and Fisheries and any work done under a mineral lease from the State of Louisiana may necessarily be conducted in conformity with the rules and regulations promulgated by the said Department of Wildlife and Fisheries for Oyster Seed Bed Areas.

Applicant: HAROLD J. ANDERSON, INC.

Bidder	Cash Payment	Price/Acre	Rental	Oil	Gas	Other

