

**TRACT 39544 - Ouachita Parish, Louisiana**

All of the lands now or formerly constituting the beds and bottoms of all water bodies of every nature and description as to which title is vested in the State of Louisiana, together with all islands arising therein and other lands formed by accretion or by reliction, where allowed by law, excepting tax adjudicated lands, and not presently under mineral lease on January 9, 2008, situated in Ouachita Parish, Louisiana, and more particularly described as follows: Beginning at a point having Coordinates of X = 2,116,117.18 and Y = 602,313.37; thence East 10,910.21 feet to a point having Coordinates of X = 2,127,027.39 and Y = 602,313.37; thence South 16,419.50 feet to a point having Coordinates of X = 2,127,027.39 and Y = 585,893.87; thence West 10,910.21 feet a point having Coordinates of X = 2,116,117.18 and Y = 585,893.87; thence North 16,419.50 feet to the point of beginning, containing approximately **522 acres**, all as more particularly outlined on a plat on file in the Office of Mineral Resources, Department of Natural Resources. All bearings, distances and coordinates are based on Louisiana Coordinate System of 1927, (North or South Zone), where applicable.

NOTE: The above description of the Tract nominated for lease has been provided and corrected, where required, exclusively by the nomination party. Any mineral lease selected from this Tract and awarded by the Louisiana State Mineral Board shall be without warranty of any kind, either express, implied, or statutory, including, but not limited to, the implied warranties of merchantability and fitness for a particular purpose. Should the mineral lease awarded by the Louisiana State Mineral Board be subsequently modified, cancelled or abrogated due to the existence of conflicting leases, operating agreements, private claims or other future obligations or conditions which may affect all or any portion of the leased Tract, it shall not relieve the Lessee of the obligation to pay any bonus due thereon to the Louisiana State Mineral Board, nor shall the Louisiana State Mineral Board be obligated to refund any consideration paid by the Lessor prior to such modification, cancellation, or abrogation, including, but not limited to, bonuses, rentals and royalties.

Applicant: TAGCO

Bidder	Cash Payment	Price/Acre	Rental	Oil	Gas	Other



OUACHITA PARISH

T16N - R4E



P.O.B.

OUACHITA RIVER

T15N - R3E





**TRACT 39545 - Ouachita and Richland Parishes, Louisiana**

All of the lands now or formerly constituting the beds and bottoms of all water bodies of every nature and description as to which title is vested in the State of Louisiana, together with all islands arising therein and other lands formed by accretion or by reliction, where allowed by law, excepting tax adjudicated lands, and not presently under mineral lease on January 9, 2008, situated in Ouachita and Richland Parishes, Louisiana, and more particularly described as follows: Beginning at a point having Coordinates of X = 2,148,709.53 and Y = 602,368.66; thence East 2,369.42 feet to a point having Coordinates of X = 2,151,078.95 and Y = 602,368.66; thence South 11 degrees 26 minutes 55 seconds West 16,549.95 feet to a point having Coordinates of X = 2,147,794.00 and Y = 586,148.00; thence West 6,663.50 feet to a point having Coordinates of X = 2,141,130.50 and Y = 586,148.00; thence North 25 degrees 02 minutes 39 seconds East 17,903.95 feet to the point of beginning, containing approximately **116 acres**, all as more particularly outlined on a plat on file in the Office of Mineral Resources, Department of Natural Resources. All bearings, distances and coordinates are based on Louisiana Coordinate System of 1927, (North or South Zone), where applicable.

NOTE: The above description of the Tract nominated for lease has been provided and corrected, where required, exclusively by the nomination party. Any mineral lease selected from this Tract and awarded by the Louisiana State Mineral Board shall be without warranty of any kind, either express, implied, or statutory, including, but not limited to, the implied warranties of merchantability and fitness for a particular purpose. Should the mineral lease awarded by the Louisiana State Mineral Board be subsequently modified, cancelled or abrogated due to the existence of conflicting leases, operating agreements, private claims or other future obligations or conditions which may affect all or any portion of the leased Tract, it shall not relieve the Lessee of the obligation to pay any bonus due thereon to the Louisiana State Mineral Board, nor shall the Louisiana State Mineral Board be obligated to refund any consideration paid by the Lessor prior to such modification, cancellation, or abrogation, including, but not limited to, bonuses, rentals and royalties.

Applicant: TAGCO

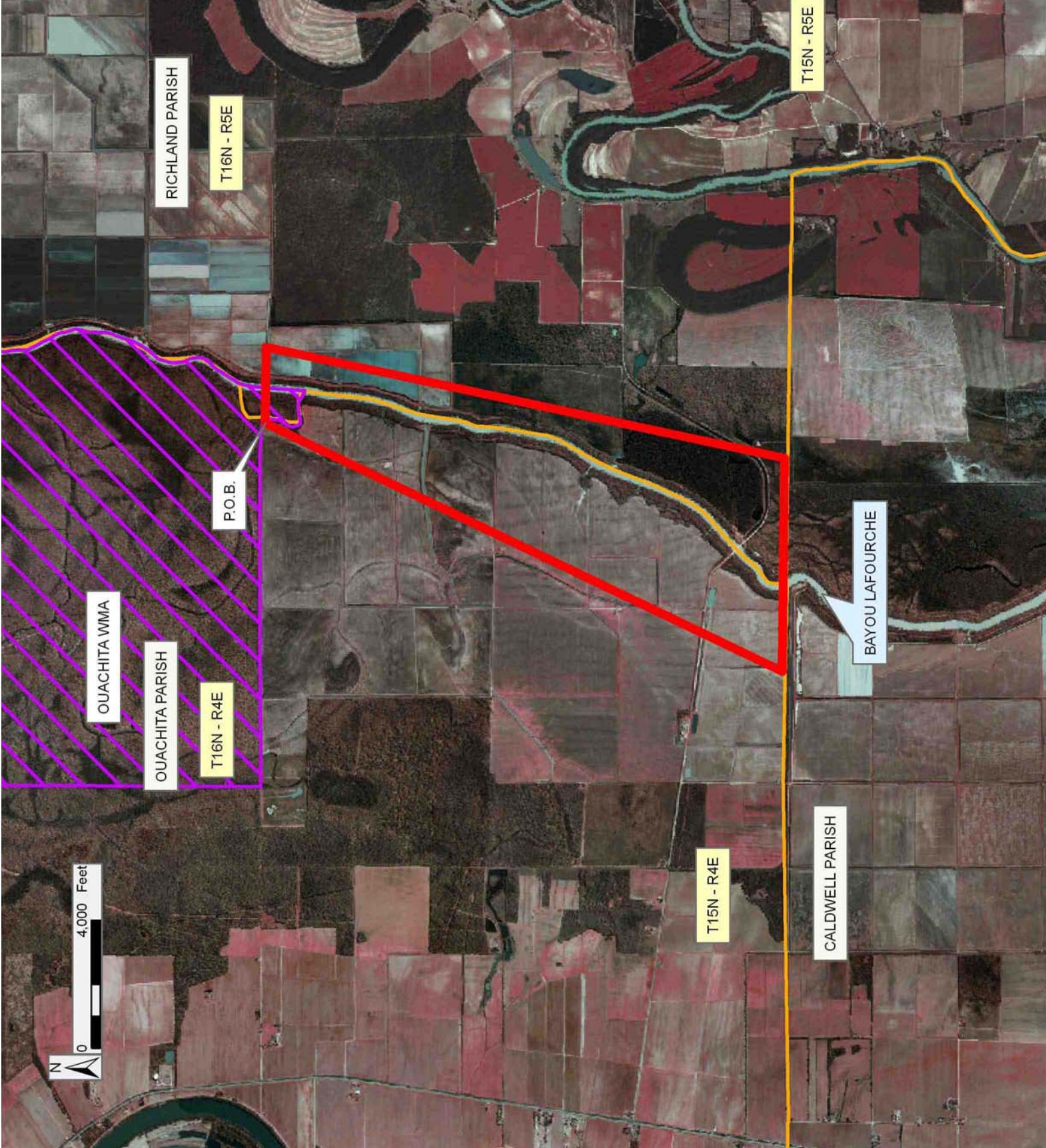
Bidder	Cash Payment	Price/Acre	Rental	Oil	Gas	Other



**Legend**

- 08010004
- Wildlife
- Counties

**DOQQ2004**



Office of Mineral Resources, Acres: 116 Tract Number: 39545



**TRACT 39546 - Caldwell Ouachita and Richland Parishes, Louisiana**

All of the lands now or formerly constituting the beds and bottoms of all water bodies of every nature and description as to which title is vested in the State of Louisiana, together with all islands arising therein and other lands formed by accretion or by reliction, where allowed by law, excepting tax adjudicated lands, and not presently under mineral lease on January 9, 2008, situated in Caldwell Ouachita and Richland Parishes, Louisiana, and more particularly described as follows: Beginning at a point having Coordinates of X = 2,141,130.50 and Y = 586,148.00; thence East 6,663.50 feet to a point having Coordinates of X = 2,147,794.00 and Y = 586,148.00; thence South 10,364.00 feet to a point on the North boundary of State Lease No. 18789 having Coordinates of X = 2,147,794.00 and Y = 575,784.00; thence West 6,663.50 feet along the North boundary of said State Lease No. 18789 to a point having Coordinates of X = 2,141,130.50 and Y = 575,784.00; thence North 10,364.00 feet to the point of beginning, containing approximately **78 acres**, all as more particularly outlined on a plat on file in the Office of Mineral Resources, Department of Natural Resources. All bearings, distances and coordinates are based on Louisiana Coordinate System of 1927, (North or South Zone), where applicable.

NOTE: The above description of the Tract nominated for lease has been provided and corrected, where required, exclusively by the nomination party. Any mineral lease selected from this Tract and awarded by the Louisiana State Mineral Board shall be without warranty of any kind, either express, implied, or statutory, including, but not limited to, the implied warranties of merchantability and fitness for a particular purpose. Should the mineral lease awarded by the Louisiana State Mineral Board be subsequently modified, cancelled or abrogated due to the existence of conflicting leases, operating agreements, private claims or other future obligations or conditions which may affect all or any portion of the leased Tract, it shall not relieve the Lessee of the obligation to pay any bonus due thereon to the Louisiana State Mineral Board, nor shall the Louisiana State Mineral Board be obligated to refund any consideration paid by the Lessor prior to such modification, cancellation, or abrogation, including, but not limited to, bonuses, rentals and royalties.

Applicant: TAGCO

Bidder	Cash Payment	Price/Acre	Rental	Oil	Gas	Other

Legend  
08010003  
Active\_Leases  
DOQQ2004

RICHLAND PARISH

T15N - R5E

OUACHITA PARISH

BAYOU LAFOURCHE

P.O.B.

SL 18789

CALDWELL PARISH

T15N - R4E





**TRACT 39547 - Lasalle and Rapides Parishes, Louisiana**

All of the lands now or formerly constituting the beds and bottoms of all water bodies of every nature and description as to which title is vested in the State of Louisiana, together with all islands arising therein and other lands formed by accretion or by reliction, where allowed by law, excepting tax adjudicated lands, and not presently under mineral lease on January 9, 2008, situated in Lasalle and Rapides Parishes, Louisiana, and more particularly described as follows: Beginning at a point having Coordinates of X = 2,099,800.00 and Y = 292,560.00; thence East 18,480.00 feet to a point having Coordinates of X = 2,118,280.00 and Y = 292,560.00; thence South 8,820.00 feet to a point having Coordinates of X = 2,118,280.00 and Y = 283,740.00; thence West 18,480.00 feet to a point having Coordinates of X = 2,099,800.00 and Y = 283,740.00; thence North 8,820.00 feet to the point of beginning, **LESS AND EXCEPT** all that portion of State Lease No. 19234 which lies entirely within the above described tract, being more fully described as follows: Commencing at a point being the point of beginning of the above described nominated tract having coordinates of X = 2,099,800.00 and Y = 292,560.00; thence South 50 degrees 24 minutes 28 seconds East 6014.90 feet to the Westernmost Northwest corner of SL 19234 having Coordinates of X = 2,104,435.07 and Y = 288,726.58; thence East 1,350.00 feet to a point having Coordinates of X = 2,105,785.07 and Y = 288,726.58; thence North 400.00 feet to a point having Coordinates of X = 2,105,785.07 and Y = 289,126.58; thence East 2,700.00 feet to a point having Coordinates of X = 2,108,485.07 and Y = 289,126.58; thence South 400.00 feet to a point having Coordinates of X = 2,108,485.07 and Y = 288,726.58; thence East 4,600.00 feet to a point having Coordinates of X = 2,113,085.07 and Y = 288,726.58; thence South 2,600.00 feet to a point having Coordinates of X = 2,113,085.07 and Y = 286,126.58; thence West 2,000.00 feet to a point having Coordinates of X = 2,111,085.07 and Y = 286,126.58; thence South approximately 1,137 feet on a line, or extension thereof, to a point said to be on the shoreline of Catahoula Lake having a Coordinate of X = 2,111,085.07; thence meander along said shoreline the following: Northwesterly, Westerly, Southwesterly and Southerly to a point of intersection with an East West line having a Coordinate of Y = 287,284.20; thence West approximately 277 feet to a point having Coordinates of X = 2,104,435.07 and Y = 287,284.20; thence North 1,442.38 feet to its point of beginning, **LESS AND EXCEPT** any portion of the above described tract that may be located within the Dewey W. Willis Wildlife Management Area, (This nomination includes only waterbottoms claimed and owned by the state and specifically excludes any land which the state may claim or own and to which the mineral rights are vested in the state), the nominated tract containing approximately **2,105 acres**, all as more particularly outlined on a plat on file in the Office of Mineral Resources, Department of Natural Resources. All bearings, distances and coordinates are based on Louisiana Coordinate System of 1927, (North or South Zone), where applicable.

NOTE: The above description of the Tract nominated for lease has been provided and corrected, where required, exclusively by the nomination

party. Any mineral lease selected from this Tract and awarded by the Louisiana State Mineral Board shall be without warranty of any kind, either express, implied, or statutory, including, but not limited to, the implied warranties of merchantability and fitness for a particular purpose. Should the mineral lease awarded by the Louisiana State Mineral Board be subsequently modified, cancelled or abrogated due to the existence of conflicting leases, operating agreements, private claims or other future obligations or conditions which may affect all or any portion of the leased Tract, it shall not relieve the Lessee of the obligation to pay any bonus due thereon to the Louisiana State Mineral Board, nor shall the Louisiana State Mineral Board be obligated to refund any consideration paid by the Lessor prior to such modification, cancellation, or abrogation, including, but not limited to, bonuses, rentals and royalties.

NOTE: The above Tract is located upon a restricted scenic river and all operations in this area must be conducted in strict conformity with the regulations of the Corps of Engineers, U.S. Army.

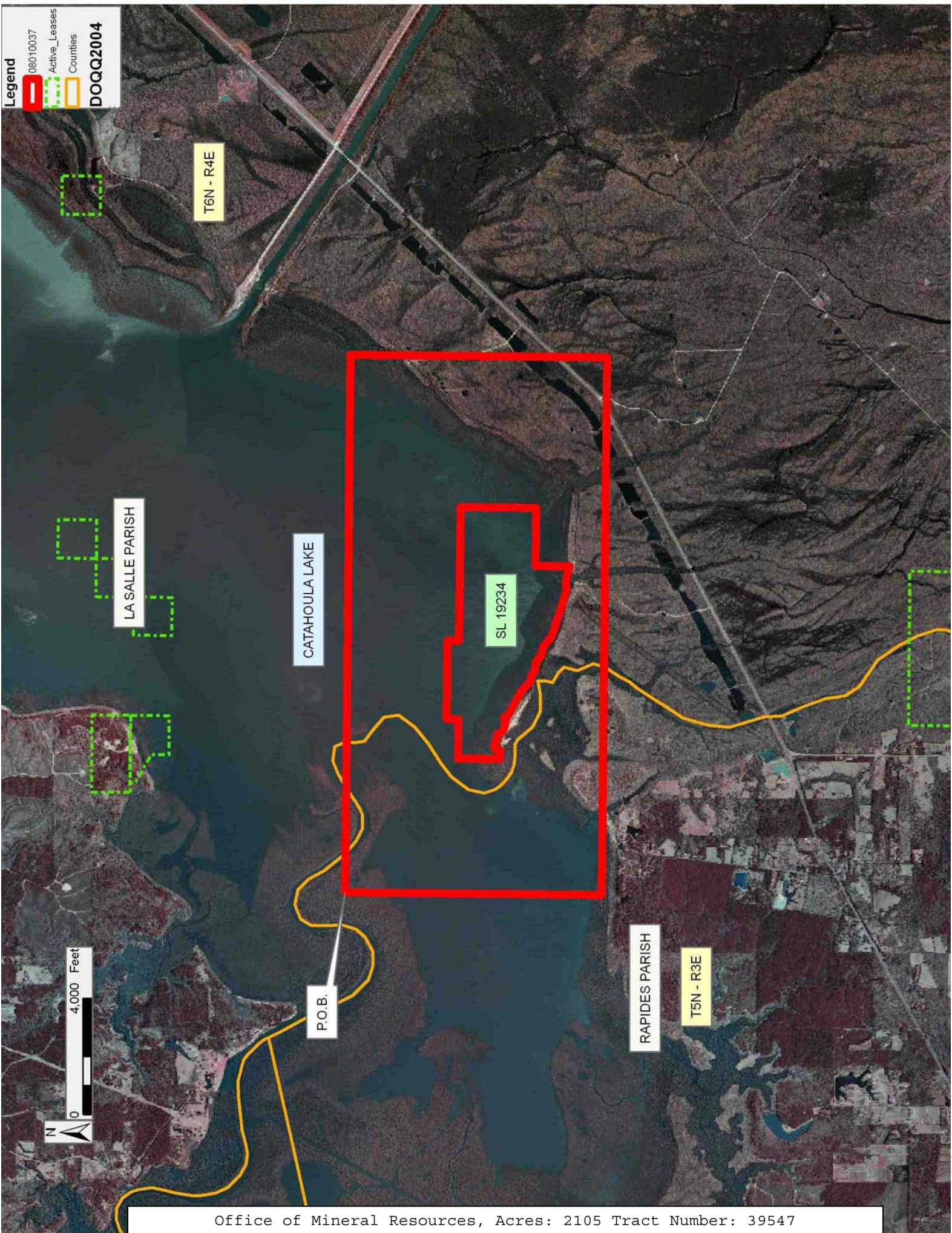
Applicant: THEOPHILUS OIL, GAS & LAND SERVICES, LLC

Bidder	Cash Payment	Price/Acre	Rental	Oil	Gas	Other



**Legend**

- 08010037
- Active\_Leases
- Counties
- DOQQ2004



**TRACT 39548 - East Feliciana and St. Helena Parishes, Louisiana**

All of the lands now or formerly constituting the beds and bottoms of all water bodies of every nature and description as to which title is vested in the State of Louisiana, together with all islands arising therein and other lands formed by accretion or by reliction, where allowed by law, excepting tax adjudicated lands, and not presently under mineral lease on January 9, 2008, situated in East Feliciana and St. Helena Parishes, Louisiana, and more particularly described as follows: Beginning at a point having Coordinates of X = 2,143,115.00 and Y = 849,372.90; thence East 18,480.00 feet to a point having Coordinates of X = 2,161,595.00 and Y = 849,372.90; thence South 11,337.90 feet to a point having Coordinates of X = 2,161,595.00 and Y = 838,035.00; thence West 18,480.00 feet a point having Coordinates of X = 2,143,115.00 and Y = 838,035.00; thence North 11,337.90 feet to the point of beginning, containing approximately **71 acres**, all as more particularly outlined on a plat on file in the Office of Mineral Resources, Department of Natural Resources. All bearings, distances and coordinates are based on Louisiana Coordinate System of 1927, (North or South Zone), where applicable.

NOTE: The above description of the Tract nominated for lease has been provided and corrected, where required, exclusively by the nomination party. Any mineral lease selected from this Tract and awarded by the Louisiana State Mineral Board shall be without warranty of any kind, either express, implied, or statutory, including, but not limited to, the implied warranties of merchantability and fitness for a particular purpose. Should the mineral lease awarded by the Louisiana State Mineral Board be subsequently modified, cancelled or abrogated due to the existence of conflicting leases, operating agreements, private claims or other future obligations or conditions which may affect all or any portion of the leased Tract, it shall not relieve the Lessee of the obligation to pay any bonus due thereon to the Louisiana State Mineral Board, nor shall the Louisiana State Mineral Board be obligated to refund any consideration paid by the Lessor prior to such modification, cancellation, or abrogation, including, but not limited to, bonuses, rentals and royalties.

NOTE: The above Tract is located upon a restricted scenic river and all operations in this area must be conducted in strict conformity with the regulations of the Corps of Engineers, U.S. Army.

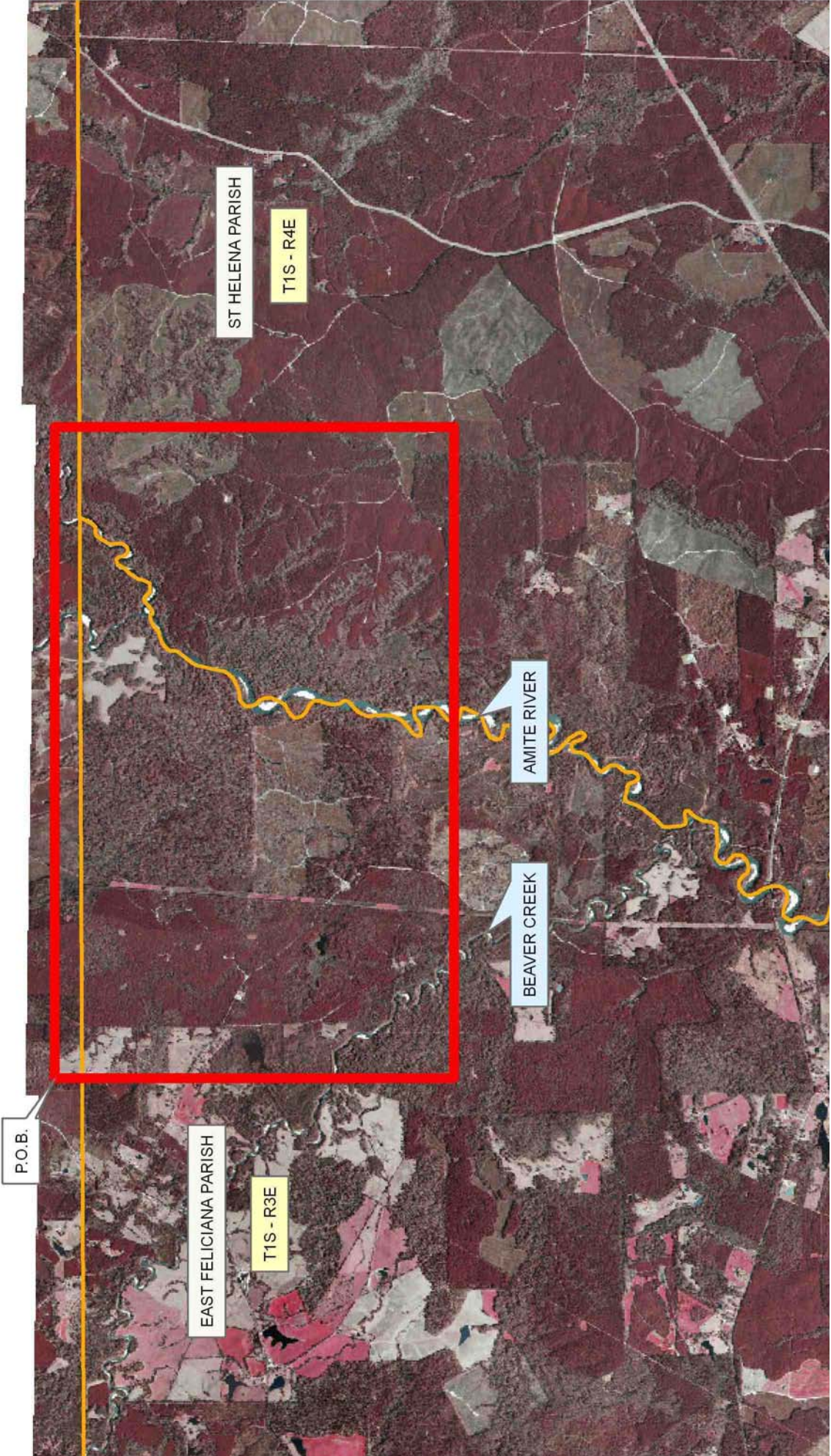


Applicant: MARK A. O'NEAL & ASSOCIATES, INC.

Bidder	Cash Payment	Price/Acre	Rental	Oil	Gas	Other

**Legend**

- 08010006
- Counties
- DOQQ2004





**TRACT 39549 - Calcasieu Parish, Louisiana**

All of the lands now or formerly constituting the beds and bottoms of all water bodies of every nature and description as to which title is vested in the State of Louisiana, together with all islands arising therein and other lands formed by accretion or by reliction, where allowed by law, excepting tax adjudicated lands, and not presently under mineral lease on January 9, 2008, situated in Calcasieu Parish, Louisiana, and more particularly described as follows: Beginning at a point having Coordinates of X = 1,428,522.94 and Y = 596,976.37; thence North 1,722.89 feet to a point having Coordinates of X = 1,428,522.94 and Y = 598,699.26; thence East 89 degrees 09 minutes 34 seconds South 4,300 feet to a point having Coordinates of X = 1,432,822.48 and Y = 598,636.18; thence North 00 degrees 37 minutes 17 seconds East 1,931.86 feet to a point having Coordinates of X = 1,432,843.43 and Y = 600,567.93; thence East 1336.12 feet X = 1,434,179.55 and Y = 600,567.93; thence South 00 degrees 38 minutes 32 seconds West 3,006.97 feet to X = 1,434,145.85 and Y = 597,561.15; thence North 89 degrees 11 minutes 43 seconds West 578.1 feet to X = 1,433,567.81 and Y = 597,569.27; thence south 1,295.19 feet to X = 1,433,567.81 and Y = 596,274.08; thence West 3017.61 feet to X = 1,430,550.20 and Y = 596,274.08 ; thence North 702.29 feet to X = 1,430,550.20 and Y = 596,976.37; thence West 2027.26 to the point of beginning, containing approximately **42 acres**, all as more particularly outlined on a plat on file in the Office of Mineral Resources, Department of Natural Resources. All bearings, distances and coordinates are based on Louisiana Coordinate System of 1927, (North or South Zone), where applicable.

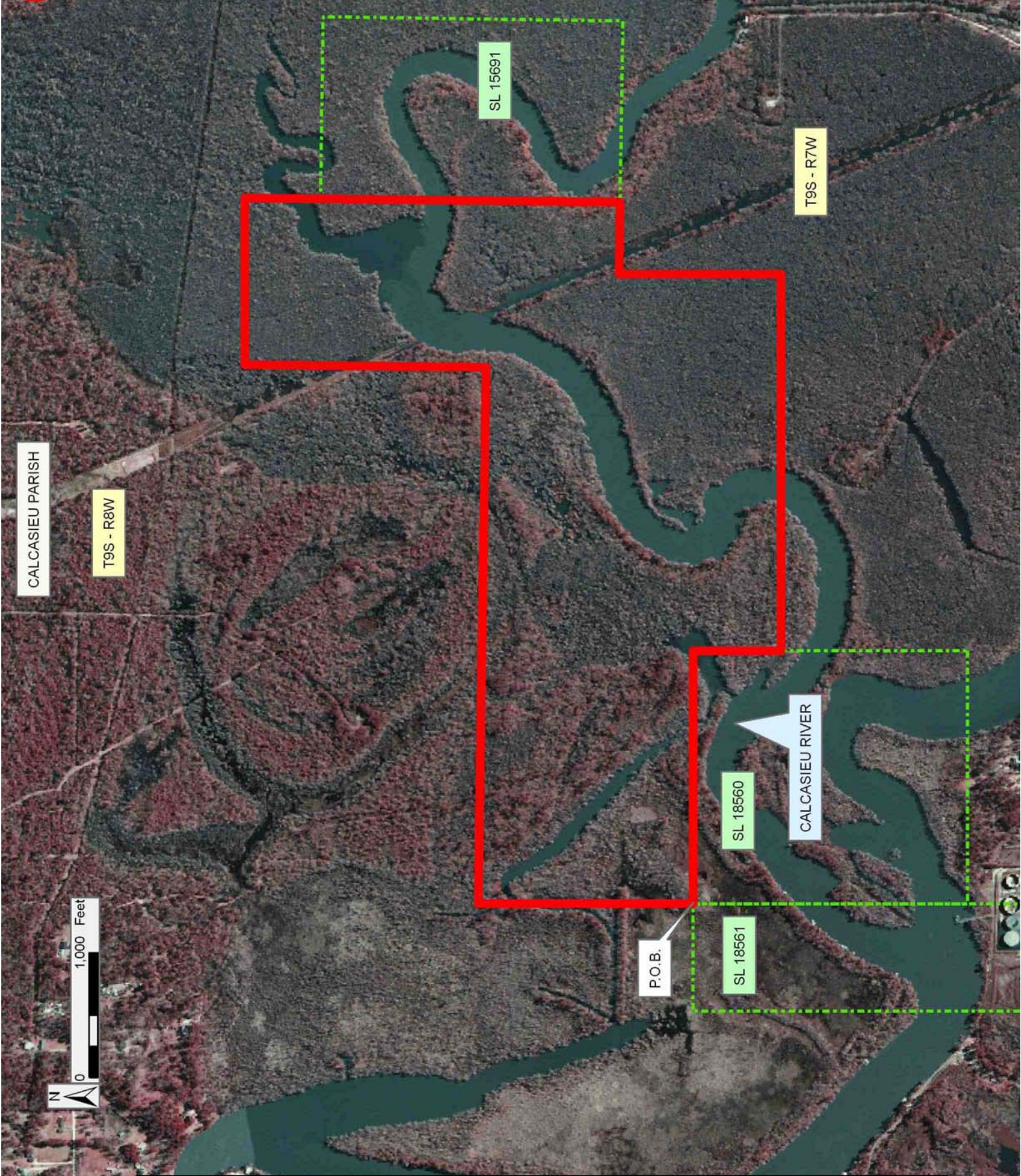
NOTE: The above description of the Tract nominated for lease has been provided and corrected, where required, exclusively by the nomination party. Any mineral lease selected from this Tract and awarded by the Louisiana State Mineral Board shall be without warranty of any kind, either express, implied, or statutory, including, but not limited to, the implied warranties of merchantability and fitness for a particular purpose. Should the mineral lease awarded by the Louisiana State Mineral Board be subsequently modified, cancelled or abrogated due to the existence of conflicting leases, operating agreements, private claims or other future obligations or conditions which may affect all or any portion of the leased Tract, it shall not relieve the Lessee of the obligation to pay any bonus due thereon to the Louisiana State Mineral Board, nor shall the Louisiana State Mineral Board be obligated to refund any consideration paid by the Lessor prior to such modification, cancellation, or abrogation, including, but not limited to, bonuses, rentals and royalties.

Applicant: STAFF OFFICE OF MINERAL RESOURCES

Bidder	Cash Payment	Price/Acre	Rental	Oil	Gas	Other



**Legend**  
08010002  
Active\_Leases  
DOQQ2004





**TRACT 39550 - Cameron Parish, Louisiana**

All of the lands now or formerly constituting the beds and bottoms of all water bodies of every nature and description as to which title is vested in the State of Louisiana, together with all islands arising therein and other lands formed by accretion or by reliction, where allowed by law, excepting tax adjudicated lands, and not presently under mineral lease on January 9, 2008, situated in Cameron Parish, Louisiana, and more particularly described as follows: Beginning at a point having Coordinates of X = 1,567,383.00 and Y = 463,884.00; thence East 18,240.00 feet to a point having Coordinates of X = 1,585,623.00 and Y = 463,884.00; thence South 12,000.00 feet to the Easternmost Northeast corner of State Lease No. 19354 having Coordinates of X = 1,585,623.00 and Y = 451,884.00; thence along the boundary of said State Lease No. 19354 the following courses: West 3,666.00 feet to a point having Coordinates of X = 1,581,957.00 and Y = 451,884.00; North 1,596.00 feet to a point having Coordinates of X = 1,581,957.00 and Y = 453,480.00 and West 1,126.00 feet to the Southeast corner of State Lease No. 18506 having Coordinates of X = 1,580,831.00 and Y = 453,480.00; thence along the boundary of said State Lease No. 18506 the following courses: North 3,920.00 feet to a point having Coordinates of X = 1,580,831.00 and Y = 457,400.00; West 3,000.00 feet to a point having Coordinates of X = 1,577,831.00 and Y = 457,400.00 and South 1,800.39 feet to a point having Coordinates of X = 1,577,831.00 and Y = 455,599.61; thence West 1,705.55 feet to the Southeast corner of State Lease No. 18507 having Coordinates of X = 1,576,125.45 and Y = 455,599.61; thence along the boundary of said State Lease No. 18507 the following courses: North 01 degree 22 minutes 52 seconds East 4,932.68 feet to a point having Coordinates of X = 1,576,244.35 and Y = 460,530.86 and West 3,577.64 feet to its Northwest corner, also being the Northeast corner of State Lease No. 18505 having Coordinates of X = 1,572,666.71 and Y = 460,530.86; thence West 5,283.71 feet along the North boundary of said State Lease No. 18505 to a point having Coordinates of X = 1,567,383.00 and Y = 460,530.86; thence North 3,353.14 feet to the point of beginning, containing approximately **1,403 acres**, all as more particularly outlined on a plat on file in the Office of Mineral Resources, Department of Natural Resources. All bearings, distances and coordinates are based on Louisiana Coordinate System of 1927, (North or South Zone), where applicable.

NOTE: The above description of the Tract nominated for lease has been provided and corrected, where required, exclusively by the nomination party. Any mineral lease selected from this Tract and awarded by the Louisiana State Mineral Board shall be without warranty of any kind, either express, implied, or statutory, including, but not limited to, the implied warranties of merchantability and fitness for a particular purpose. Should the mineral lease awarded by the Louisiana State Mineral Board be subsequently modified, cancelled or abrogated due to the existence of conflicting leases, operating agreements, private claims or other future obligations or conditions which may affect all or any portion of the leased Tract, it shall not relieve the Lessee of the obligation to pay any bonus due thereon to the Louisiana State Mineral Board, nor shall

the Louisiana State Mineral Board be obligated to refund any consideration paid by the Lessor prior to such modification, cancellation, or abrogation, including, but not limited to, bonuses, rentals and royalties.

NOTE: The State of Louisiana does hereby reserve, and this lease shall be subject to, the imprescriptible right of surface use in the nature of a servitude in favor of the Department of Natural Resources, including its Offices and Commissions, for the sole purpose of implementing, constructing, servicing and maintaining approved coastal zone management and/or restoration projects. Utilization of any and all rights derived under this lease by the mineral lessee, its agents, successors or assigns, shall not interfere with nor hinder the reasonable surface use by the Department of Natural Resources, its Offices or Commissions, as herein above reserved.

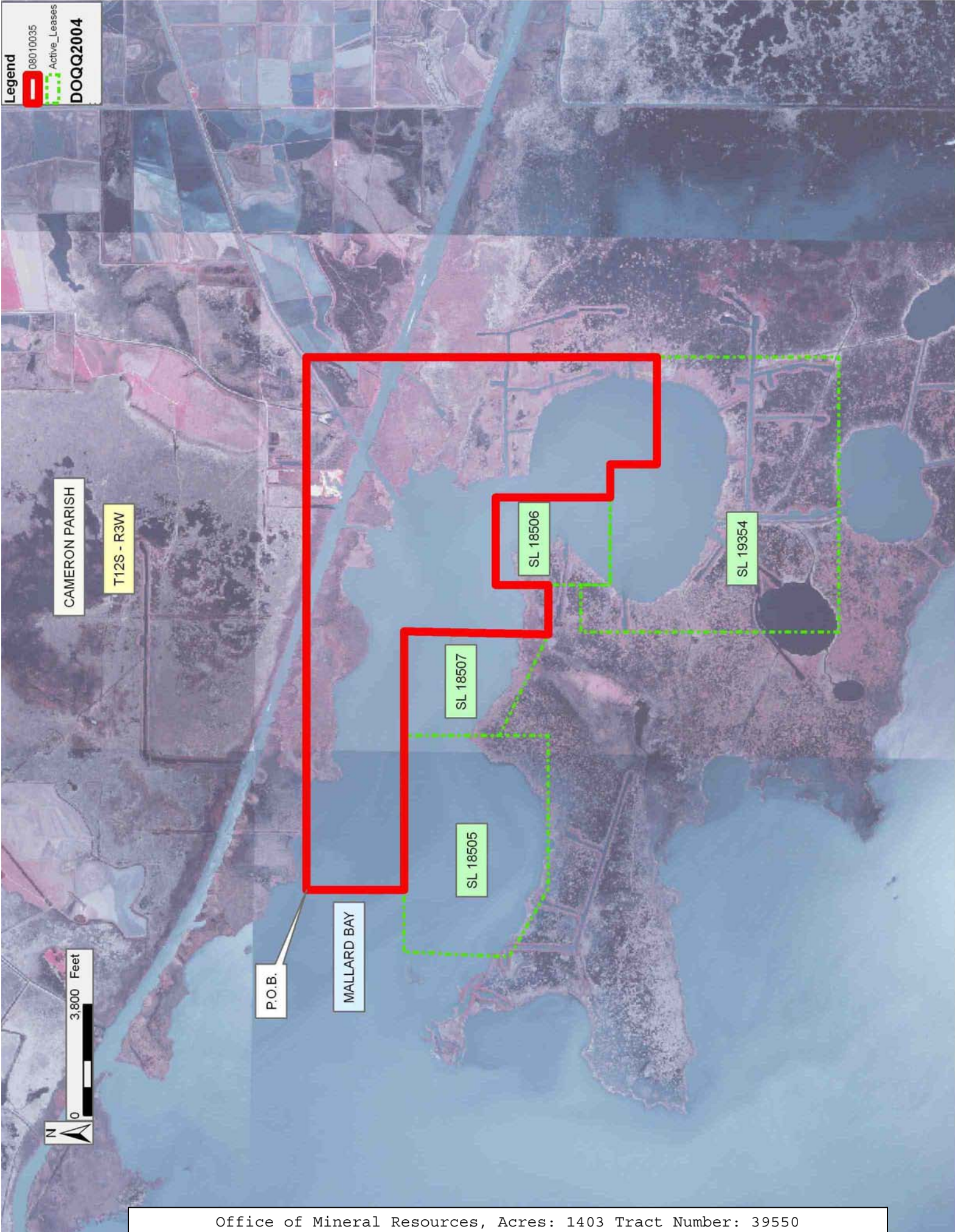
Applicant: REAGAN ENERGY SERVICES, L.L.C.

Bidder	Cash Payment	Price/Acre	Rental	Oil	Gas	Other



**Legend**

08010035  
Active\_Leases  
DOQQ2004



**TRACT 39551 - Portion of Block 47, Chandeleur Sound Area, St. Bernard Parish, Louisiana**

All of the lands now or formerly constituting the beds and bottoms of all water bodies of every nature and description as to which title is vested in the State of Louisiana, together with all islands arising therein and other lands formed by accretion or by reliction, where allowed by law, excepting tax adjudicated lands, and not presently under mineral lease on January 9, 2008, situated in St. Bernard Parish, Louisiana, and more particularly described as follows: Beginning at a Point having Coordinates of X = 2,598,475.00 and Y = 403,455.00; thence West 7,375.00 feet to a point on the West line of Block 47, Chandeleur Sound Area having Coordinates of X = 2,591,100.00 and Y = 403,455.00; thence North 7,375.00 feet along the said West line of Block 47, Chandeleur Sound Area to its Northwest corner having Coordinates of X = 2,591,100.00 and Y = 410,830.00; thence East 7,375.00 feet along the North line of said Block 47, Chandeleur Sound Area to a point having Coordinates of X = 2,598,475.00 and Y = 410,830.00; thence South 7,375.00 feet to the point of beginning, containing approximately **337 acres**, all as more particularly outlined on a plat on file in the Office of Mineral Resources, Department of Natural Resources. All bearings, distances and coordinates are based on Louisiana Coordinate System of 1927, (North or South Zone), where applicable.

NOTE: The above description of the Tract nominated for lease has been provided and corrected, where required, exclusively by the nomination party. Any mineral lease selected from this Tract and awarded by the Louisiana State Mineral Board shall be without warranty of any kind, either express, implied, or statutory, including, but not limited to, the implied warranties of merchantability and fitness for a particular purpose. Should the mineral lease awarded by the Louisiana State Mineral Board be subsequently modified, cancelled or abrogated due to the existence of conflicting leases, operating agreements, private claims or other future obligations or conditions which may affect all or any portion of the leased Tract, it shall not relieve the Lessee of the obligation to pay any bonus due thereon to the Louisiana State Mineral Board, nor shall the Louisiana State Mineral Board be obligated to refund any consideration paid by the Lessor prior to such modification, cancellation, or abrogation, including, but not limited to, bonuses, rentals and royalties.

NOTE: The Office of Mineral Resources will require a minimum bonus of \$230 per acre and a minimum royalty of 23%.

NOTE: The State of Louisiana does hereby reserve, and this lease shall be subject to, the imprescriptible right of surface use in the nature of a servitude in favor of the Department of Natural Resources, including its Offices and Commissions, for the sole purpose of implementing, constructing, servicing and maintaining approved coastal zone management and/or restoration projects. Utilization of any and all rights derived under this lease by the mineral lessee, its agents, successors or assigns,



shall not interfere with nor hinder the reasonable surface use by the Department of Natural Resources, its Offices or Commissions, as herein above reserved.

NOTE: The Department of Wildlife and Fisheries has designated certain areas in the coastal waters of the State of Louisiana as Oyster Seed Bed Areas. The exact location of those Seed Bed Areas must be obtained from the Department of Wildlife and Fisheries and any work done under a mineral lease from the State of Louisiana may necessarily be conducted in conformity with the rules and regulations promulgated by the said Department of Wildlife and Fisheries for Oyster Seed Bed Areas.

Applicant: MINERAL SERVICES, INC.

Bidder	Cash Payment	Price/Acre	Rental	Oil	Gas	Other

Legend  
08010055  
Blocks  
DOQQ2004

ST BERNARD PARISH

LAKE ELOI

CS0046

CS0047

P.O.B.

LAKE ATHANASIO  
CHANDELEUR SOUND AREA

T15S - R17E





**TRACT 39552 - Portion of Block 47, Chandeleur Sound Area, St. Bernard Parish, Louisiana**

All of the lands now or formerly constituting the beds and bottoms of all water bodies of every nature and description as to which title is vested in the State of Louisiana, together with all islands arising therein and other lands formed by accretion or by reliction, where allowed by law, excepting tax adjudicated lands, and not presently under mineral lease on January 9, 2008, situated in St. Bernard Parish, Louisiana, and more particularly described as follows: Beginning at a Point having Coordinates of X = 2,598,475.00 and Y = 403,455.00; thence South 1,455.00 feet to a point being the Northwest corner of State Lease No. 4039 having Coordinates of X = 2,598,475.00 and Y = 402,000.00; thence South 5,920.00 feet along the West line of said State Lease No. 4039 to a its Southwest corner located on the South line of Block 47, Chandeleur Sound Area having Coordinates of X = 2,598,475.00 and Y = 396,080.00; thence West 7,375.00 feet along the said South line of said Block 47, Chandeleur Sound Area to its Southwest corner having Coordinates of X = 2,591,100.00 and Y = 396,080.00; thence North 2,875.00 feet along the West line of said Block 47, Chandeleur Sound Area to the Southeast corner of State Lease No. 19277 having Coordinates of X = 2,591,100.00 and Y = 398,955.00; thence North 3,500.00 feet along the said West line of said Block 47, Chandeleur Sound Area, also being the East line of said State Lease No. 19277 to its Northeast corner having Coordinates of X = 2,591,100.00 and Y = 402,455.00; thence North 1,000.00 feet along the said West line of said Block 47, Chandeleur Sound Area to a point having Coordinates of X = 2,591,100.00 and Y = 403,455.00; thence East 7,375.00 feet to the point of beginning, containing approximately **1,029 acres**, all as more particularly outlined on a plat on file in the Office of Mineral Resources, Department of Natural Resources. All bearings, distances and coordinates are based on Louisiana Coordinate System of 1927, (North or South Zone), where applicable.

NOTE: The above description of the Tract nominated for lease has been provided and corrected, where required, exclusively by the nomination party. Any mineral lease selected from this Tract and awarded by the Louisiana State Mineral Board shall be without warranty of any kind, either express, implied, or statutory, including, but not limited to, the implied warranties of merchantability and fitness for a particular purpose. Should the mineral lease awarded by the Louisiana State Mineral Board be subsequently modified, cancelled or abrogated due to the existence of conflicting leases, operating agreements, private claims or other future obligations or conditions which may affect all or any portion of the leased Tract, it shall not relieve the Lessee of the obligation to pay any bonus due thereon to the Louisiana State Mineral Board, nor shall the Louisiana State Mineral Board be obligated to refund any consideration paid by the Lessor prior to such modification, cancellation, or abrogation, including, but not limited to, bonuses, rentals and royalties.

NOTE: The State of Louisiana does hereby reserve, and this lease shall be subject to, the imprescriptible right of surface use in the nature of a servitude in favor of the Department of Natural Resources, including its Offices and Commissions, for the sole purpose of implementing, constructing, servicing and maintaining approved coastal zone management and/or restoration projects. Utilization of any and all rights derived under this lease by the mineral lessee, its agents, successors or assigns, shall not interfere with nor hinder the reasonable surface use by the Department of Natural Resources, its Offices or Commissions, as herein above reserved.

NOTE: The Department of Wildlife and Fisheries has designated certain areas in the coastal waters of the State of Louisiana as Oyster Seed Bed Areas. The exact location of those Seed Bed Areas must be obtained from the Department of Wildlife and Fisheries and any work done under a mineral lease from the State of Louisiana may necessarily be conducted in conformity with the rules and regulations promulgated by the said Department of Wildlife and Fisheries for Oyster Seed Bed Areas.

Applicant: MINERAL SERVICES, INC.

Bidder	Cash Payment	Price/Acre	Rental	Oil	Gas	Other



**Legend**  
08010054  
Active\_Leases  
DOQQ2004

ST BERNARD PARISH

LAKE ELOI

CHANDELEUR SOUND AREA

P.O.B.

SL 4039

T15S - R17E

LAKE ATHANASIO

SL 19277



**TRACT 39553 - Portion of Block 72, Chandeleur Sound Area, St. Bernard Parish, Louisiana**

All of the lands now or formerly constituting the beds and bottoms of all water bodies of every nature and description as to which title is vested in the State of Louisiana, together with all islands arising therein and other lands formed by accretion or by reliction, where allowed by law, excepting tax adjudicated lands, and not presently under mineral lease on January 9, 2008, situated in St. Bernard Parish, Louisiana, and more particularly described as follows: Beginning at a Point having Coordinates of X = 2,598,475.00 and Y = 388,705.00; thence West 7,375.00 feet to a point on the West line of Block 72, Chandeleur Sound Area having Coordinates of X = 2,591,100.00 and Y = 388,705.00; thence North 7,375.00 feet along the said West line of Block 72, Chandeleur Sound Area to its Northwest corner having Coordinates of X = 2,591,100.00 and Y = 396,080.00; thence East 7,375.00 feet along the North line of said Block 72, Chandeleur Sound Area to a point being the Southwest corner of State Lease No. 4039 having Coordinates of X = 2,598,475.00 and Y = 396,080.00; thence South 7,375.00 feet to the point of beginning, containing approximately **1,244 acres**, all as more particularly outlined on a plat on file in the Office of Mineral Resources, Department of Natural Resources. All bearings, distances and coordinates are based on Louisiana Coordinate System of 1927, (North or South Zone), where applicable.

NOTE: The above description of the Tract nominated for lease has been provided and corrected, where required, exclusively by the nomination party. Any mineral lease selected from this Tract and awarded by the Louisiana State Mineral Board shall be without warranty of any kind, either express, implied, or statutory, including, but not limited to, the implied warranties of merchantability and fitness for a particular purpose. Should the mineral lease awarded by the Louisiana State Mineral Board be subsequently modified, cancelled or abrogated due to the existence of conflicting leases, operating agreements, private claims or other future obligations or conditions which may affect all or any portion of the leased Tract, it shall not relieve the Lessee of the obligation to pay any bonus due thereon to the Louisiana State Mineral Board, nor shall the Louisiana State Mineral Board be obligated to refund any consideration paid by the Lessor prior to such modification, cancellation, or abrogation, including, but not limited to, bonuses, rentals and royalties.

NOTE: The State of Louisiana does hereby reserve, and this lease shall be subject to, the imprescriptible right of surface use in the nature of a servitude in favor of the Department of Natural Resources, including its Offices and Commissions, for the sole purpose of implementing, constructing, servicing and maintaining approved coastal zone management and/or restoration projects. Utilization of any and all rights derived under this lease by the mineral lessee, its agents, successors or assigns, shall not interfere with nor hinder the reasonable surface use by the Department of Natural Resources, its Offices or Commissions, as herein above reserved.



NOTE: The Department of Wildlife and Fisheries has designated certain areas in the coastal waters of the State of Louisiana as Oyster Seed Bed Areas. The exact location of those Seed Bed Areas must be obtained from the Department of Wildlife and Fisheries and any work done under a mineral lease from the State of Louisiana may necessarily be conducted in conformity with the rules and regulations promulgated by the said Department of Wildlife and Fisheries for Oyster Seed Bed Areas.

Applicant: MINERAL SERVICES, INC.

Bidder	Cash Payment	Price/Acre	Rental	Oil	Gas	Other

**Legend**  
08010056  
Active\_Leases  
DOQQ2004

SL 4039

T15S - R17E

CHANDELEUR SOUND AREA

P.O.B.

ST BERNARD PARISH

LAKE ATHANASIO

T15S - R17E

