

**TRACT 38842 - Caddo Parish, Louisiana**

A certain Tract of land, excluding the beds and bottoms of all navigable waters, belonging to and not presently under mineral lease from Caddo Parish School Board on January 10, 2007, being more fully described as follows: Beginning at the Northwest corner of Section 21, Township 16 North, Range 13 West; thence South 00 degrees 51 minutes 15 seconds West along the West line of said Section 21 a distance of 3,624.34 feet; thence South 89 degrees 10 minutes 47 seconds East a distance of 40.00 feet to the East right of way line of Norris Ferry Road, as dedicated in Book 1056, Pages 233 and 234, of the Conveyance records of Caddo Parish, Louisiana, also being the point of beginning of the tract herein described; thence South 89 degrees 10 minutes 47 seconds East a distance of 544.26 feet to a point on the Southwesterly right of way line of the Kansas City Southern Railroad, as dedicated; thence South 25 degrees 35 minutes 00 seconds East a distance of 1,198.91 feet along said Southwesterly right of way line of the Kansas City Railroad; thence North 89 degrees 10 minutes 47 seconds West a distance of 1,078.04 feet to a point on the East right of way line of Norris Ferry Road, as dedicated; thence North 00 degrees 51 minutes 15 seconds East a distance of 1,073.85 feet along a portion of said East right of way line of Norris Ferry Road, as dedicated, to the Point of Beginning, containing approximately **20 acres**, all as more particularly outlined on a plat on file in the Office of Mineral Resources, Department of Natural Resources. The description is based on information provided by the State Agency regarding location and ownership of surface and mineral rights. All bearings, distances and coordinates, if applicable, are based on Louisiana Coordinate System of 1927, (North or South Zone).

NOTE: The above description of the Tract nominated for lease has been provided and corrected, where required, exclusively by the nomination party. Any mineral lease selected from this Tract and awarded by the Louisiana State Mineral Board shall be without warranty of any kind, either express, implied, or statutory, including, but not limited to, the implied warranties of merchantability and fitness for a particular purpose. Should the mineral lease awarded by the Louisiana State Mineral Board be subsequently modified, cancelled or abrogated due to the existence of conflicting leases, operating agreements, private claims or other future obligations or conditions which may affect all or any portion of the leased Tract, it shall not relieve the Lessee of the obligation to pay any bonus due thereon to the Louisiana State Mineral Board, nor shall the Louisiana State Mineral Board be obligated to refund any consideration paid by the Lessor prior to such modification, cancellation, or abrogation, including, but not limited to, bonuses, rentals and royalties.

NOTE: No actual wells or excavations will be located on, or drilled on, or mined on, or drilling or mining operations conducted and development on the property.

NOTE: No pipelines, tank batteries or other facilities and equipment associated with oil, mineral or gas exploration and development will be placed on the property.

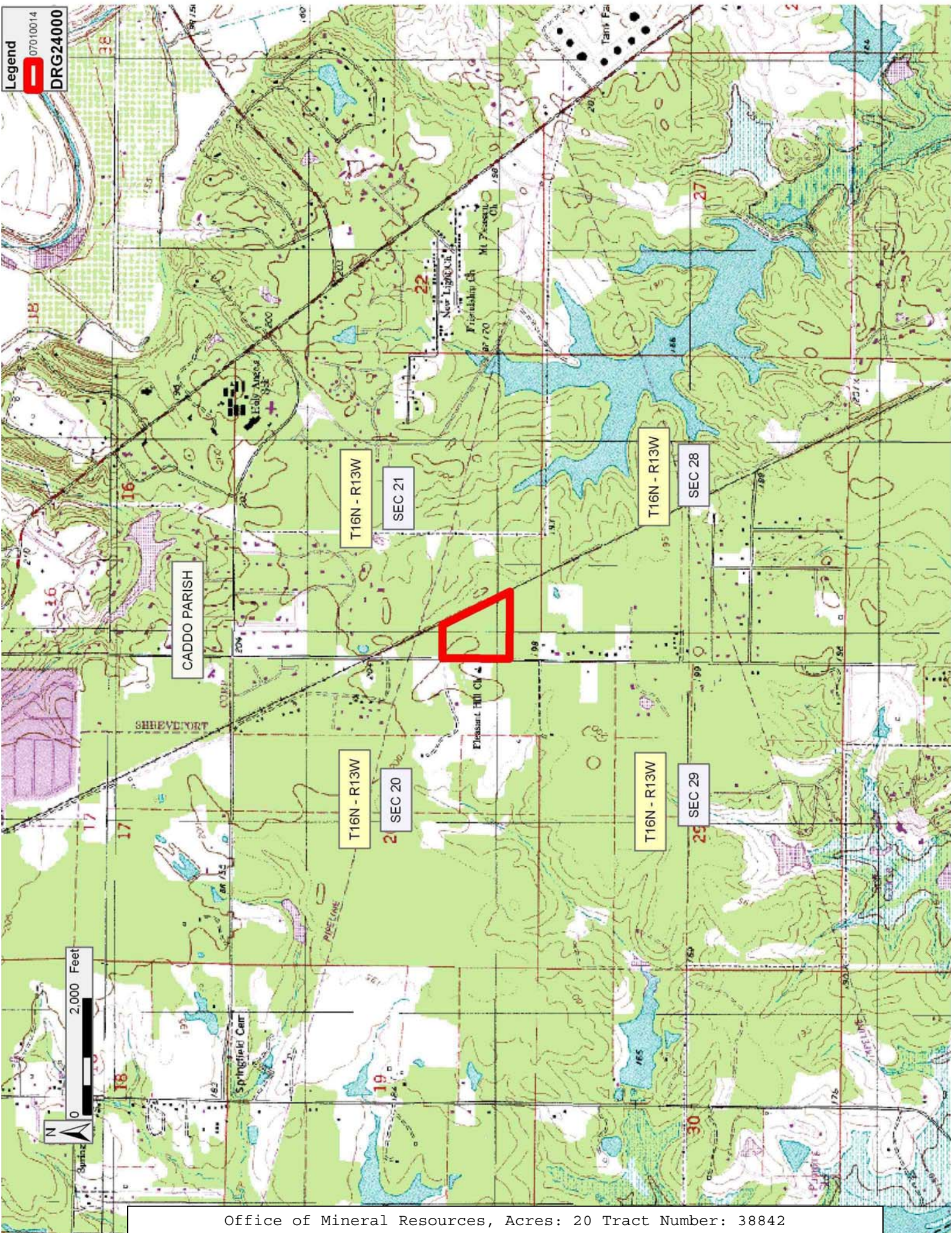
NOTE: Caddo Parish School Board shall receive fair market value for merchantable timber removed or destroyed in conducting operations on any tract leased.

NOTE: Any oil, mineral or gas development and/or exploration under the provisions of the lease shall not interfere, hinder or disrupt the educational program or activities under the direction of Caddo Parish School Board.

Applicant: TODD M. BERGERON to Agency and by Resolution from the Caddo Parish School Board authorizing the Mineral Board to act in its behalf

Bidder	Cash Payment	Price/Acre	Rental	Oil	Gas	Other







**TRACT 38843 - Red River Parish School Board and Desoto Parish School Board and Natchitoches Parish School Board - De Soto Parish, Louisiana**

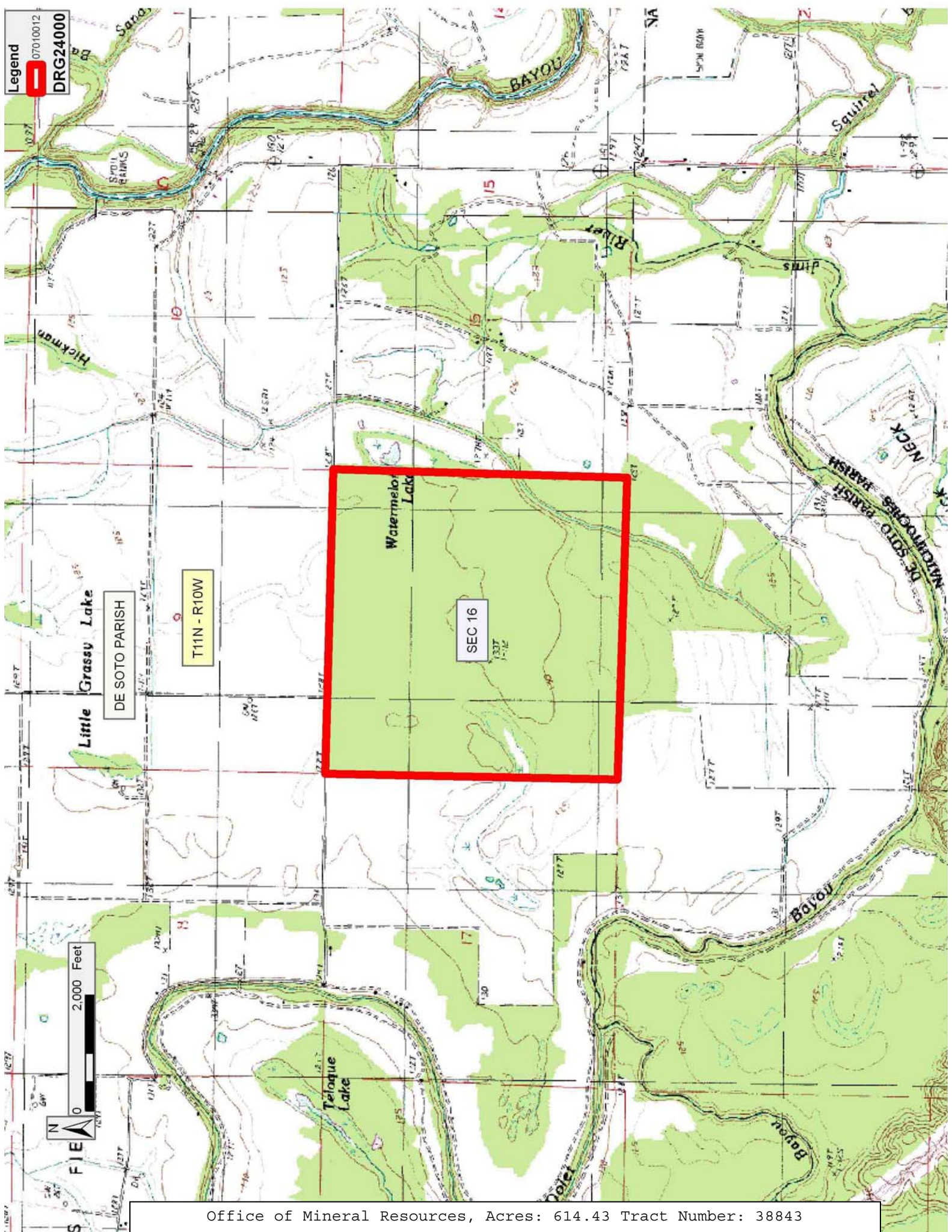
The State Mineral Board acting on behalf of the Red River Parish School Board and Desoto Parish School Board and Natchitoches Parish School Board, pursuant to Resolution(s) adopted by that (those) body(ies) and in accordance with Louisiana Revised Statutes 30:121-136 and 151-156, as amended, and Article XIV, Section 16(A)(9) and (B) of the Louisiana Constitution of 1974, as same may be continued and promulgated in proper statutory form and, further, amended from time to time, advertises the lands not under mineral lease on January 10, 2007, excluding the beds and bottoms of all navigable water bodies located within the following: All or a portion of Section 16, Township 11 South, Range 10 West in De Soto Parish, Louisiana, excluding beds and bottoms of all navigable waters located in said section, containing approximately **614.43 acres**, all as more particularly outlined on a plat on file in the Office of Mineral Resources, Department of Natural Resources. All bearings, distances and coordinates are based on Louisiana Coordinate System of 1927, (North or South Zone).

NOTE: The above description of the Tract nominated for lease has been provided and corrected, where required, exclusively by the nomination party. Any mineral lease selected from this Tract and awarded by the Louisiana State Mineral Board shall be without warranty of any kind, either express, implied, or statutory, including, but not limited to, the implied warranties of merchantability and fitness for a particular purpose. Should the mineral lease awarded by the Louisiana State Mineral Board be subsequently modified, cancelled or abrogated due to the existence of conflicting leases, operating agreements, private claims or other future obligations or conditions which may affect all or any portion of the leased Tract, it shall not relieve the Lessee of the obligation to pay any bonus due thereon to the Louisiana State Mineral Board, nor shall the Louisiana State Mineral Board be obligated to refund any consideration paid by the Lessor prior to such modification, cancellation, or abrogation, including, but not limited to, bonuses, rentals and royalties.

NOTE: Lessors acknowledge that said Township 11 North, Range 10 West, is located 39.19% in Desoto Parish, 24.12% in Red River Parish and 36.69% in Natchitoches Parish; and Lessee is authorized and directed to pay any and all rentals and royalties which may accrue under the terms of this lease to Lessor in the following proportions; DeSoto Parish School Board - 39.19%, Red River Parish School Board - 24.12% and Natchitoches Parish School Board - 36.69% and prospective bidders are hereby placed on notice that execution by the State Mineral Board of oil, gas and mineral lease on behalf of the DeSoto, Red River and Natchitoches Parish School Boards on the above described portion of section shall not be construed as a waiver by the State Mineral Board of any rights that it may have to lease for and on behalf of the State of Louisiana any navigable water bottoms that might be included within said portion of said section.

Applicant: DMB ENERGY to Agency and by Resolution from the Red River Parish School Board and Desoto Parish School Board and Natchitoches Parish School Board authorizing the Mineral Board to act in its behalf

Bidder	Cash Payment	Price/Acre	Rental	Oil	Gas	Other



Legend  
07010012  
DRG24000

Little Grassy Lake  
DE SOTO PARISH

T11N - R10W

SEC 16

2,000 Feet

**TRACT 38844 - Acadia Parish, Louisiana**

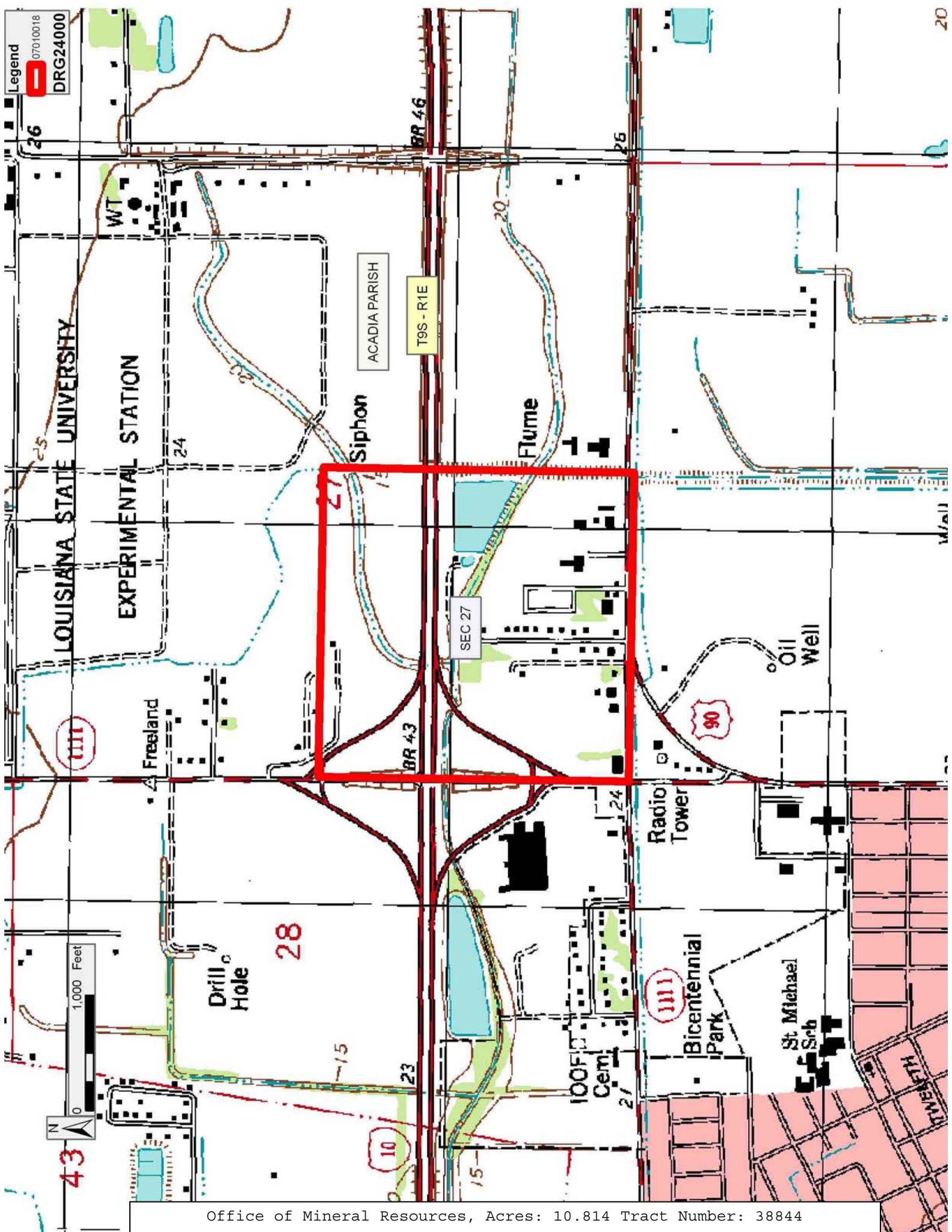
A certain Tract of land, excluding the beds and bottoms of all navigable waters, belonging to and not presently under mineral lease from Louisiana Department Of Transportation And Development on January 10, 2007, being more fully described as follows: That certain piece or parcel of ground together with all the buildings and improvements thereon, lying and situated in the SW 1/4 of Section 27, Township 9 South, Range 1 East, Parish of Acadia, Louisiana, containing 10.814 acres, and more fully described by plan of survey of Proposed Barn Site, Crowley, Louisiana, by J.R. Clark, Jr., Project Engineer, dated July 13, 1953, copy of which is paraphed Ne Varietur and annexed hereto for reference, as follows, to-wit; Commencing at the intersection of Sections 28, 27, 33, and 34, Township 9 South, Range 1 East, thence, in a northerly direction along the section line, which is also the centerline of State Route 1024, a distance of 851.0 feet to a point and corner, thence in an easterly direction, a distance of 25.0 feet to the point of beginning, which is in the eastern right of way line of said State Route 1024; thence in a northerly direction, along the said eastern right of way line 390.0 feet to a point and corner, thence in an easterly direction 504.0 feet to a point and corner, thence in a northerly direction 397.0 feet to a point which is in the center of a 20 feet bottom drainage ditch and corner, thence in an easterly direction 348.8 feet to a point and corner, thence in a southerly direction 787.0 feet to a point and corner, thence in a westerly direction 852.8 feet to the point of beginning, containing **10.814 acres**, being part of a larger tract of land containing 28.66 acres, more or less, acquired by Arcadia Livestock Commission Co., Inc. from Lazor John, by Act dated February 20, 1943, of record in Conveyance Book J 7, Folio 335, Parish of Acadia, Louisiana, all as more particularly outlined on a plat on file in the Office of Mineral Resources, Department of Natural Resources. The description is based on information provided by the State Agency regarding location and ownership of surface and mineral rights. All bearings, distances and coordinates, if applicable, are based on Louisiana Coordinate System of 1927, (North or South Zone).

NOTE: The above description of the Tract nominated for lease has been provided and corrected, where required, exclusively by the nomination party. Any mineral lease selected from this Tract and awarded by the Louisiana State Mineral Board shall be without warranty of any kind, either express, implied, or statutory, including, but not limited to, the implied warranties of merchantability and fitness for a particular purpose. Should the mineral lease awarded by the Louisiana State Mineral Board be subsequently modified, cancelled or abrogated due to the existence of conflicting leases, operating agreements, private claims or other future obligations or conditions which may affect all or any portion of the leased Tract, it shall not relieve the Lessee of the obligation to pay any bonus due thereon to the Louisiana State Mineral Board, nor shall the Louisiana State Mineral Board be obligated to refund any consideration paid by the Lessor prior to such modification, cancellation, or abrogation, including, but not limited to, bonuses, rentals and royalties.

Applicant: LAND RESOURCES, INC. to Agency and by Resolution from the Louisiana Department Of Transportation And Development authorizing the Mineral Board to act in its behalf

Bidder	Cash Payment	Price/Acre	Rental	Oil	Gas	Other





**TRACT 38845 - Orleans Parish School Board - Orleans Parish, Louisiana**

The State Mineral Board acting on behalf of the Orleans Parish School Board, pursuant to Resolution(s) adopted by that (those) body(ies) and in accordance with Louisiana Revised Statutes 30:121-136 and 151-156, as amended, and Article XIV, Section 16(A)(9) and (B) of the Louisiana Constitution of 1974, as same may be continued and promulgated in proper statutory form and, further, amended from time to time, advertises the lands not under mineral lease on January 10, 2007, excluding the beds and bottoms of all navigable water bodies located within the following: All or a portion of Section 10 and 16 and 17 and 9 and 8 and 20 and 22 and 21 and 15, Township 11 South, Range 15 East in Orleans Parish, Louisiana, Township 11 South, Range 15 East, Section 16, containing approximately **640 acres**, all as more particularly outlined on a plat on file in the Office of Mineral Resources, Department of Natural Resources. All bearings, distances and coordinates are based on Louisiana Coordinate System of 1927, (North or South Zone).

NOTE: The above description of the Tract nominated for lease has been provided and corrected, where required, exclusively by the nomination party. Any mineral lease selected from this Tract and awarded by the Louisiana State Mineral Board shall be without warranty of any kind, either express, implied, or statutory, including, but not limited to, the implied warranties of merchantability and fitness for a particular purpose. Should the mineral lease awarded by the Louisiana State Mineral Board be subsequently modified, cancelled or abrogated due to the existence of conflicting leases, operating agreements, private claims or other future obligations or conditions which may affect all or any portion of the leased Tract, it shall not relieve the Lessee of the obligation to pay any bonus due thereon to the Louisiana State Mineral Board, nor shall the Louisiana State Mineral Board be obligated to refund any consideration paid by the Lessor prior to such modification, cancellation, or abrogation, including, but not limited to, bonuses, rentals and royalties.

NOTE: The State of Louisiana does hereby reserve, and this lease shall be subject to, the imprescriptible right of surface use in the nature of a servitude in favor of the Department of Natural Resources, including its Offices and Commissions, for the sole purpose of implementing, constructing, servicing and maintaining approved coastal zone management and/or restoration projects. Utilization of any and all rights derived under this lease by the mineral lessee, its agents, successors or assigns, shall not interfere with nor hinder the reasonable surface use by the Department of Natural Resources, its Offices or Commissions, as herein above reserved.

Applicant: ORLEANS PARISH SCHOOL BOARD to Agency and by Resolution from the Orleans Parish School Board authorizing the Mineral Board to act in its behalf

Bidder	Cash Payment	Price/Acre	Rental	Oil	Gas	Other



**Legend**

- 07010040
- Active\_Leases
- DOQQ2004



ORLEANS PARISH

NORTH LAKE BORGNE AREA

T11S - R15E

LB0027

SEC 10

SEC 9

LB0030

SEC 8

INTRACOASTAL WATERWAY

UNKNOWN PASS

LB0028

SEC 15

SEC 16



SL 5450

SEC 17

SL 5449

SEC 22

SEC 21

SEC 20

LAKE BORGNE

**TRACT 38846 - St. Bernard Parish, Louisiana**

A certain Tract of land, excluding the beds and bottoms of all navigable waters, belonging to and not presently under mineral lease from Lake Borgne Basin Levee District on January 10, 2007, being more fully described as follows: All lands situated in the South half (S/2) of Section 34, Township 11 South, Range 19 East, Southeastern Land District, St. Bernard Parish, Louisiana, containing approximately **34 acres**, all as more particularly outlined on a plat on file in the Office of Mineral Resources, Department of Natural Resources. The description is based on information provided by the State Agency regarding location and ownership of surface and mineral rights. All bearings, distances and coordinates, if applicable, are based on Louisiana Coordinate System of 1927, (North or South Zone).

NOTE: The above description of the Tract nominated for lease has been provided and corrected, where required, exclusively by the nomination party. Any mineral lease selected from this Tract and awarded by the Louisiana State Mineral Board shall be without warranty of any kind, either express, implied, or statutory, including, but not limited to, the implied warranties of merchantability and fitness for a particular purpose. Should the mineral lease awarded by the Louisiana State Mineral Board be subsequently modified, cancelled or abrogated due to the existence of conflicting leases, operating agreements, private claims or other future obligations or conditions which may affect all or any portion of the leased Tract, it shall not relieve the Lessee of the obligation to pay any bonus due thereon to the Louisiana State Mineral Board, nor shall the Louisiana State Mineral Board be obligated to refund any consideration paid by the Lessor prior to such modification, cancellation, or abrogation, including, but not limited to, bonuses, rentals and royalties.




NOTE: A minimum bonus of \$150.00 per acre and a minimum royalty of 25% is required.

Applicant: TRINITY ENERGY SERVICES, LLC to Agency and by Resolution from the Lake Borgne Basin Levee District authorizing the Mineral Board to act in its behalf

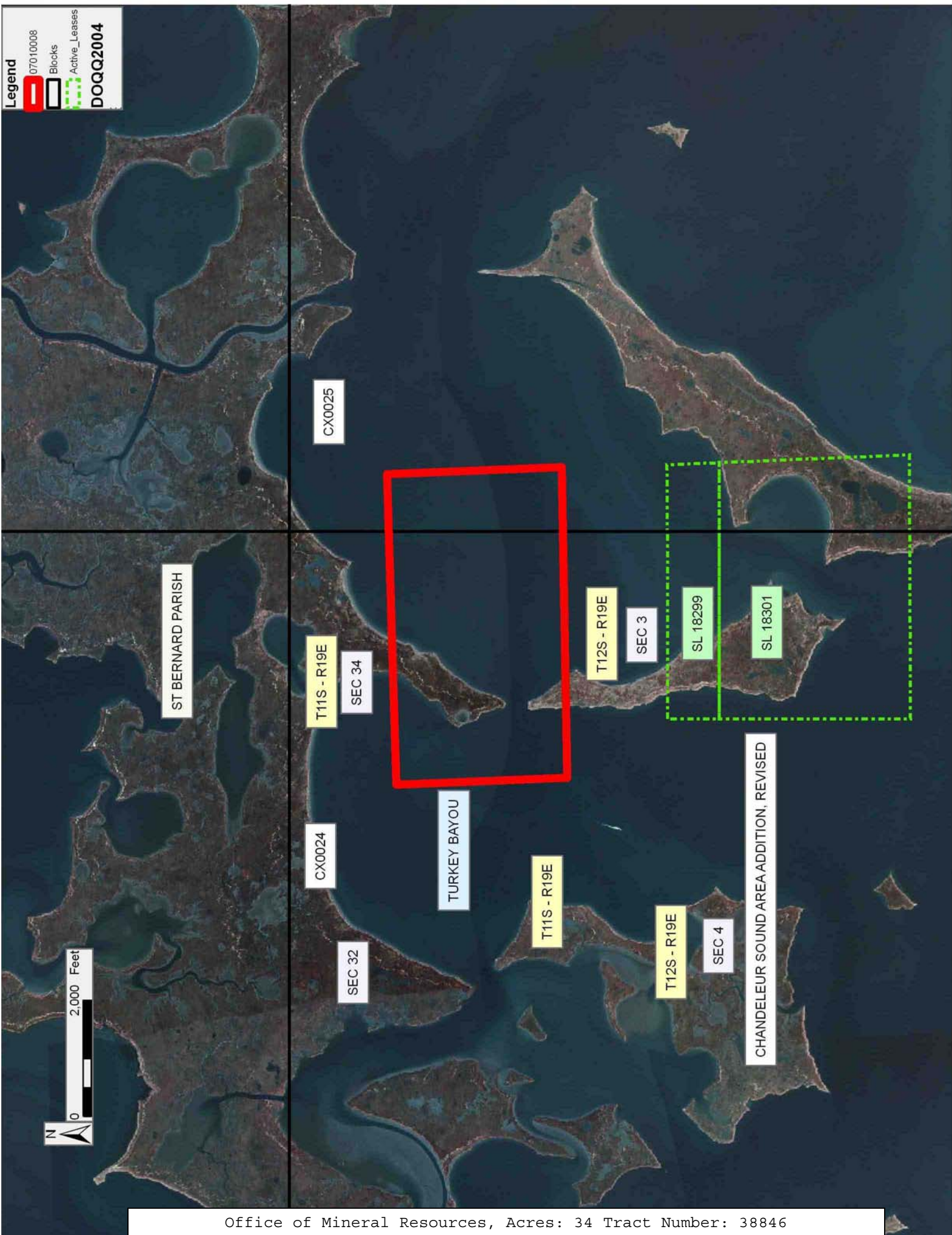
Bidder	Cash Payment	Price/Acre	Rental	Oil	Gas	Other



**Legend**

-  07010008
-  Blocks
-  Active\_Leases

**DOQQ2004**





**TRACT 38847 - St. Bernard Parish, Louisiana**

A certain Tract of land, excluding the beds and bottoms of all navigable waters, belonging to and not presently under mineral lease from Lake Borgne Basin Levee District on January 10, 2007, being more fully described as follows: All lands situated in the South half (S/2) of Section 32, Township 11 South, Range 19 East, Southeastern Land District, St. Bernard Parish, Louisiana, containing approximately **106 acres**, all as more particularly outlined on a plat on file in the Office of Mineral Resources, Department of Natural Resources. The description is based on information provided by the State Agency regarding location and ownership of surface and mineral rights. All bearings, distances and coordinates, if applicable, are based on Louisiana Coordinate System of 1927, (North or South Zone).

NOTE: The above description of the Tract nominated for lease has been provided and corrected, where required, exclusively by the nomination party. Any mineral lease selected from this Tract and awarded by the Louisiana State Mineral Board shall be without warranty of any kind, either express, implied, or statutory, including, but not limited to, the implied warranties of merchantability and fitness for a particular purpose. Should the mineral lease awarded by the Louisiana State Mineral Board be subsequently modified, cancelled or abrogated due to the existence of conflicting leases, operating agreements, private claims or other future obligations or conditions which may affect all or any portion of the leased Tract, it shall not relieve the Lessee of the obligation to pay any bonus due thereon to the Louisiana State Mineral Board, nor shall the Louisiana State Mineral Board be obligated to refund any consideration paid by the Lessor prior to such modification, cancellation, or abrogation, including, but not limited to, bonuses, rentals and royalties.

NOTE: A minimum bonus of \$150.00 per acre and a minimum royalty of 25% is required.

Applicant: TRINITY ENERGY SERVICES, LLC to Agency and by Resolution from the Lake Borgne Basin Levee District authorizing the Mineral Board to act in its behalf

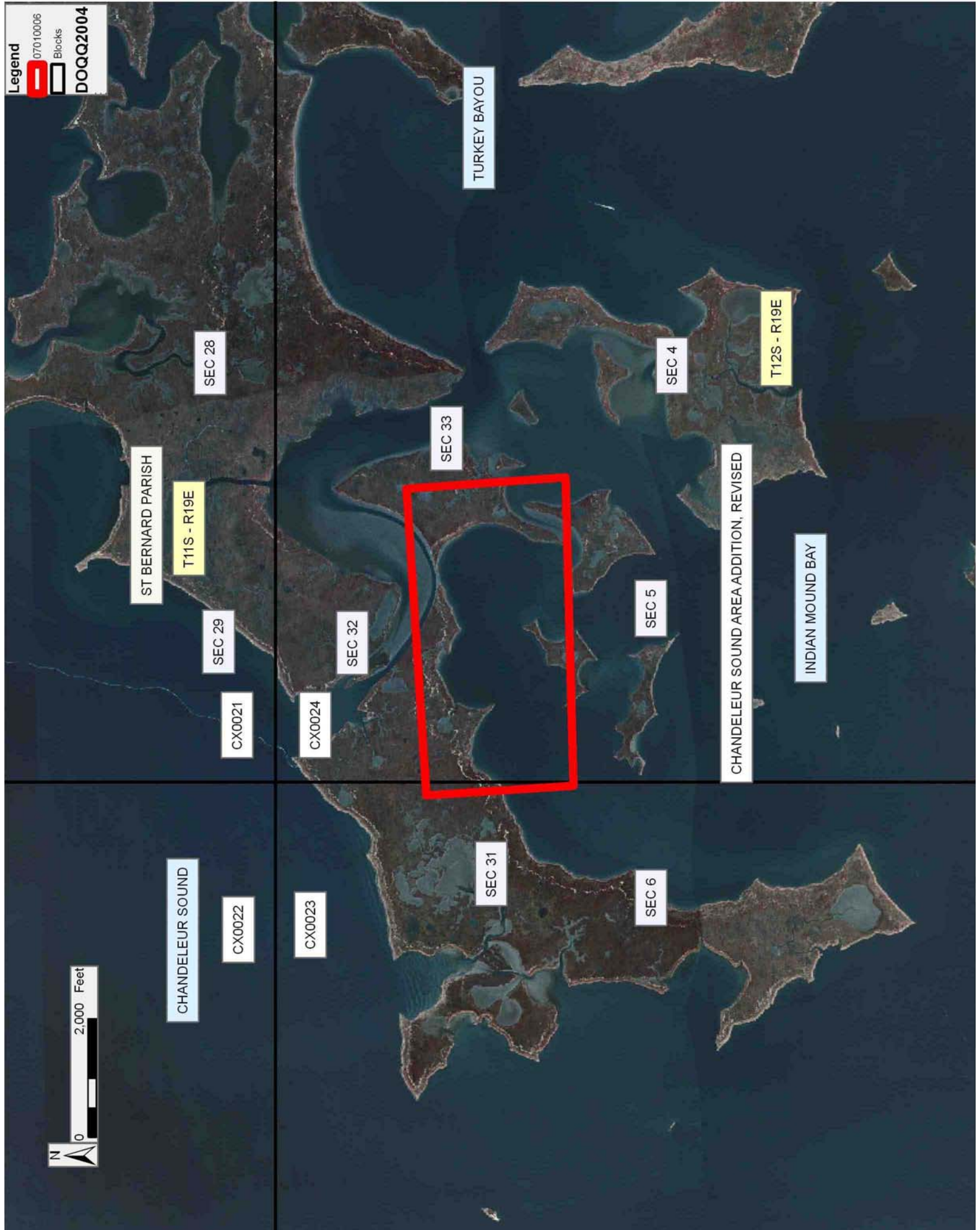
Bidder	Cash Payment	Price/Acre	Rental	Oil	Gas	Other

**Legend**

07010006

Blocks

DOQQ2004



**TRACT 38848 - St. Bernard Parish, Louisiana**

A certain Tract of land, excluding the beds and bottoms of all navigable waters, belonging to and not presently under mineral lease from Lake Borgne Basin Levee District on January 10, 2007, being more fully described as follows: All lands situated in the South half (S/2) of Section 33, Township 11 South, Range 19 East, Southeastern Land District, St. Bernard Parish, Louisiana, containing approximately **67 acres**, all as more particularly outlined on a plat on file in the Office of Mineral Resources, Department of Natural Resources. The description is based on information provided by the State Agency regarding location and ownership of surface and mineral rights. All bearings, distances and coordinates, if applicable, are based on Louisiana Coordinate System of 1927, (North or South Zone).

NOTE: The above description of the Tract nominated for lease has been provided and corrected, where required, exclusively by the nomination party. Any mineral lease selected from this Tract and awarded by the Louisiana State Mineral Board shall be without warranty of any kind, either express, implied, or statutory, including, but not limited to, the implied warranties of merchantability and fitness for a particular purpose. Should the mineral lease awarded by the Louisiana State Mineral Board be subsequently modified, cancelled or abrogated due to the existence of conflicting leases, operating agreements, private claims or other future obligations or conditions which may affect all or any portion of the leased Tract, it shall not relieve the Lessee of the obligation to pay any bonus due thereon to the Louisiana State Mineral Board, nor shall the Louisiana State Mineral Board be obligated to refund any consideration paid by the Lessor prior to such modification, cancellation, or abrogation, including, but not limited to, bonuses, rentals and royalties.

NOTE: A minimum bonus of \$150.00 per acre and a minimum royalty of 25% is required.

Applicant: TRINITY ENERGY SERVICES, LLC to Agency and by Resolution from the Lake Borgne Basin Levee District authorizing the Mineral Board to act in its behalf

Bidder	Cash Payment	Price/Acre	Rental	Oil	Gas	Other



Legend  
07010007  
Blocks  
DOQQ2004



ST BERNARD PARISH

TURKEY BAYOU

CX0021

CX0024

T11S - R19E

SEC 33

T11S - R19E

SEC 34

T11S - R19E

SEC 32

T12S - R19E

SEC 5

T12S - R19E

SEC 4

INDIAN MOUND BAY

CHANDELEUR SOUND AREA ADDITION, REVISED



**TRACT 38849 - St. Bernard Parish, Louisiana**

A certain Tract of land, excluding the beds and bottoms of all navigable waters, belonging to and not presently under mineral lease from Lake Borgne Basin Levee District on January 10, 2007, being more fully described as follows: All lands situated in the West half (W/2) of Section 3, Township 12 South, Range 18 East, Southeastern Land District, St. Bernard Parish, Louisiana, containing approximately **225 acres**, all as more particularly outlined on a plat on file in the Office of Mineral Resources, Department of Natural Resources. The description is based on information provided by the State Agency regarding location and ownership of surface and mineral rights. All bearings, distances and coordinates, if applicable, are based on Louisiana Coordinate System of 1927, (North or South Zone).

NOTE: The above description of the Tract nominated for lease has been provided and corrected, where required, exclusively by the nomination party. Any mineral lease selected from this Tract and awarded by the Louisiana State Mineral Board shall be without warranty of any kind, either express, implied, or statutory, including, but not limited to, the implied warranties of merchantability and fitness for a particular purpose. Should the mineral lease awarded by the Louisiana State Mineral Board be subsequently modified, cancelled or abrogated due to the existence of conflicting leases, operating agreements, private claims or other future obligations or conditions which may affect all or any portion of the leased Tract, it shall not relieve the Lessee of the obligation to pay any bonus due thereon to the Louisiana State Mineral Board, nor shall the Louisiana State Mineral Board be obligated to refund any consideration paid by the Lessor prior to such modification, cancellation, or abrogation, including, but not limited to, bonuses, rentals and royalties.

NOTE: A minimum bonus of \$150.00 per acre and a minimum royalty of 25% is required.

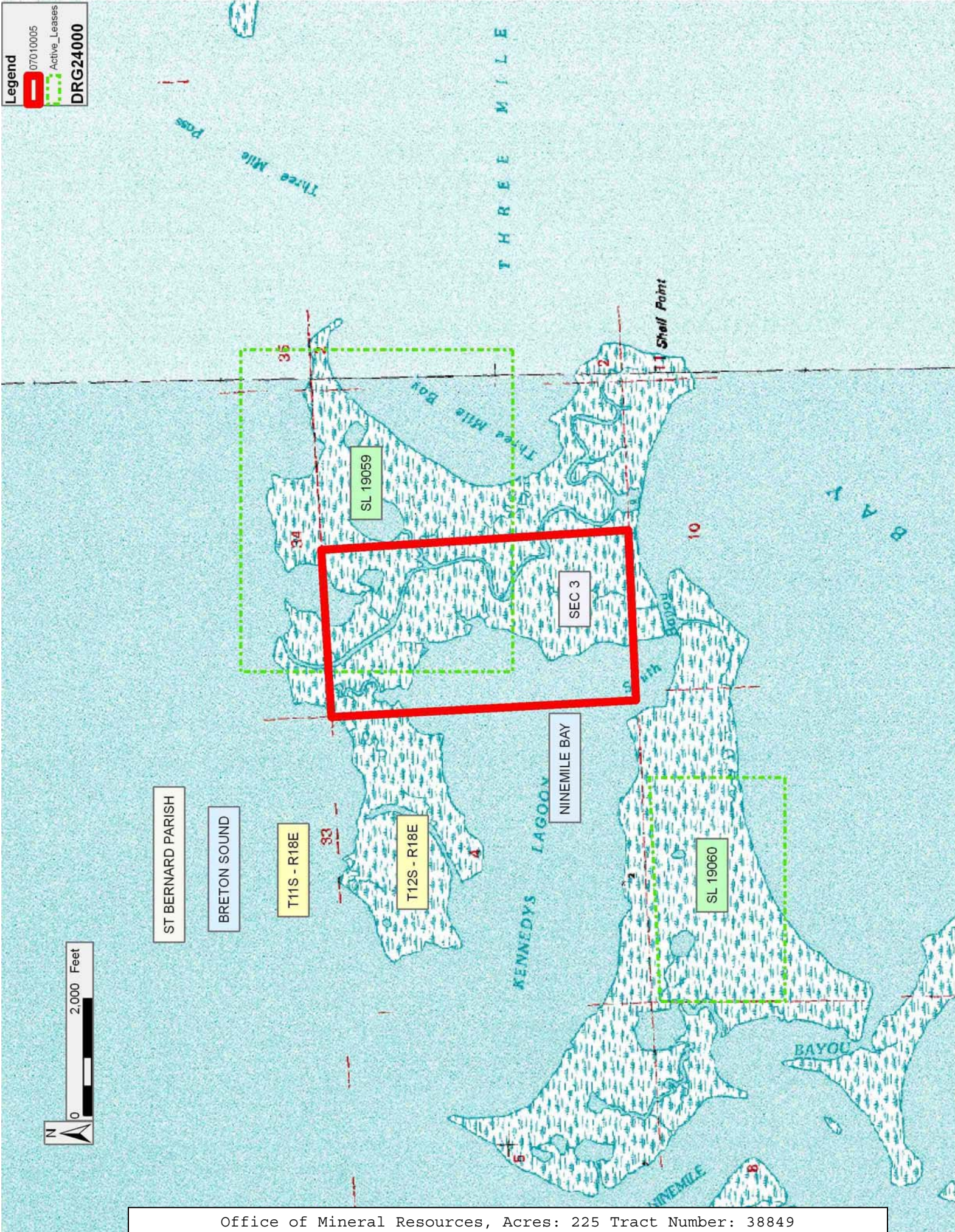
Applicant: TRINITY ENERGY SERVICES, LLC to Agency and by Resolution from the Lake Borgne Basin Levee District authorizing the Mineral Board to act in its behalf

Bidder	Cash Payment	Price/Acre	Rental	Oil	Gas	Other



**Legend**

- 07010005
- Active\_Leases
- DRG24000



ST BERNARD PARISH

BRETON SOUND

T11S - R18E

T12S - R18E

KENNEDY'S LAGOON

NINEMILE BAY

SL 19060

SL 19059

SEC 3