

TRACT 38830 - Plaquemines Parish, Louisiana

All of the lands now or formerly constituting the beds and bottoms of all water bodies of every nature and description the title of which vests in the State of Louisiana, together with all islands arising therein and other lands formed by accretion or by reliction, where allowed by law, excepting tax adjudicated lands, and not presently under mineral lease and cross hatched on January 10, 2007, situated in Plaquemines Parish, Louisiana, and more particularly described as follows: Begin at a point (Point of Beginning) on the most Southerly line of State Lease No. 18514 and having Coordinates of X = 2,504,818.66 and Y = 353,692.69; thence East 2071.87 feet to the Southeast corner of said State Lease No. 18514 and being a point on the West line of State Lease No. 18077 and having Coordinates of X = 2,506,890.53 and Y = 353,692.69; thence South 4 degrees 59 minutes 17 seconds West 926.20 feet along said West line to the Southwest corner of said State Lease No. 18077 and having Coordinates of X = 2,506,810.00 and Y = 352,770.00; thence South 82 degrees 46 minutes 44 seconds East 1,543.93 feet along the South line of said State Lease to a point having Coordinates of X = 2,508,341.69 and Y = 352,575.93; thence South 0 degrees 34 minutes 23 seconds West 3,318.61 feet and leaving State Lease No. 18077 to a point having Coordinates of X = 2,508,308.49 and Y = 349,257.49; thence South 86 degrees 31 minutes 49 seconds West 3,503.19 feet to a point having Coordinates of X = 2,504,811.73 and Y = 349,045.47; thence North 0 degrees 5 minutes 08 seconds East 4,647.22 feet to the Point of Beginning, containing approximately **245 acres**, all as more particularly outlined on a plat on file in the Office of Mineral Resources, Department of Natural Resources. All bearings, distances and coordinates are based on Louisiana Coordinate System of 1927, (North or South Zone), where applicable.

NOTE: The above description of the Tract nominated for lease has been provided and corrected, where required, exclusively by the nomination party. Any mineral lease selected from this Tract and awarded by the Louisiana State Mineral Board shall be without warranty of any kind, either express, implied, or statutory, including, but not limited to, the implied warranties of merchantability and fitness for a particular purpose. Should the mineral lease awarded by the Louisiana State Mineral Board be subsequently modified, cancelled or abrogated due to the existence of conflicting leases, operating agreements, private claims or other future obligations or conditions which may affect all or any portion of the leased Tract, it shall not relieve the Lessee of the obligation to pay any bonus due thereon to the Louisiana State Mineral Board, nor shall the Louisiana State Mineral Board be obligated to refund any consideration paid by the Lessor prior to such modification, cancellation, or abrogation, including, but not limited to, bonuses, rentals and royalties.

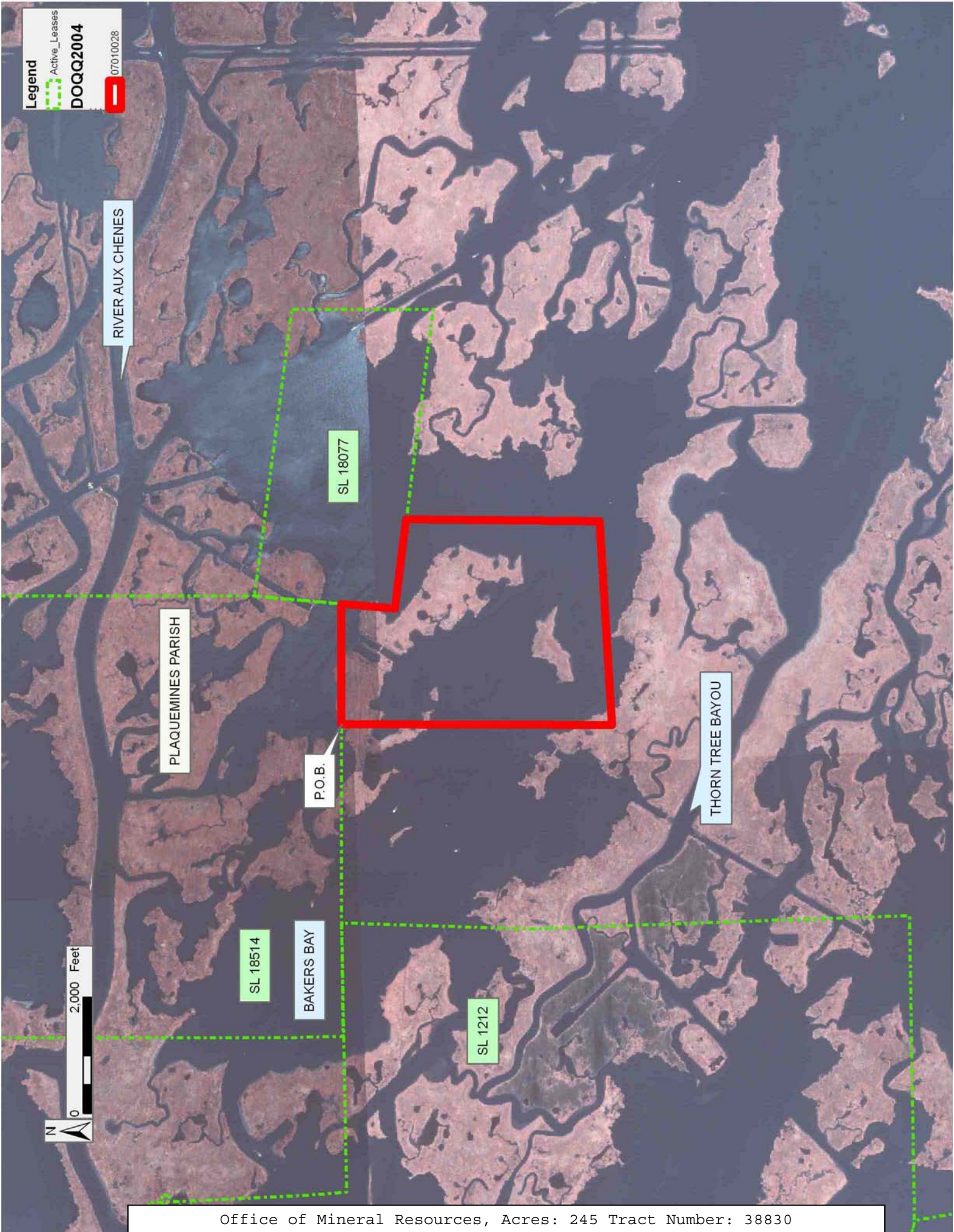
NOTE: The State of Louisiana does hereby reserve, and this lease shall be subject to, the imprescriptible right of surface use in the nature of a servitude in favor of the Department of Natural Resources, including its Offices and Commissions, for the sole purpose of implementing,

constructing, servicing and maintaining approved coastal zone management and/or restoration projects. Utilization of any and all rights derived under this lease by the mineral lessee, its agents, successors or assigns, shall not interfere with nor hinder the reasonable surface use by the Department of Natural Resources, its Offices or Commissions, as herein above reserved.

NOTE: The Department of Wildlife and Fisheries has designated certain areas in the coastal waters of the State of Louisiana as Oyster Seed Bed Areas. The exact location of those Seed Bed Areas must be obtained from the Department of Wildlife and Fisheries and any work done under a mineral lease from the State of Louisiana may necessarily be conducted in conformity with the rules and regulations promulgated by the said Department of Wildlife and Fisheries for Oyster Seed Bed Areas.

Applicant: MCGINTY-DURHAM, INC.

Bidder	Cash Payment	Price/ Acre	Rental	Oil	Gas	Other



TRACT 38831 - Plaquemines Parish, Louisiana

All of the lands now or formerly constituting the beds and bottoms of all water bodies of every nature and description the title of which vests in the State of Louisiana, together with all islands arising therein and other lands formed by accretion or by reliction, where allowed by law, excepting tax adjudicated lands, and not presently under mineral lease and cross hatched on January 10, 2007, situated in Plaquemines Parish, Louisiana, and more particularly described as follows: Begin at a point (Point of Beginning) on the South line of State Lease No. 18077 having coordinate of X = 2,508,341.69 and Y = 352,575.93; thence South 82 degrees 46 minutes 44 seconds East passing the Southeast corner of said State Lease No. 18077 at 3,627.08 feet and continuing to a total distance of 4,208.95 feet to a point having Coordinates of X = 2,512,517.25 and Y = 352,046.86; thence South 1 degree 22 minutes 35 seconds East 6,035.44 feet to a point having Coordinates of X = 2,512,662.24 and Y = 346,013.16; thence South 87 degrees 47 minutes 49 seconds West 4,391.13 feet to a point having Coordinates of X = 2,508,274.35 and Y = 345,844.36; thence North 0 degrees 34 minutes 23 seconds East 6,731.91 feet to the Point of Beginning, containing approximately **355 acres**, all as more particularly outlined on a plat on file in the Office of Mineral Resources, Department of Natural Resources. All bearings, distances and coordinates are based on Louisiana Coordinate System of 1927, (North or South Zone), where applicable.

NOTE: The above description of the Tract nominated for lease has been provided and corrected, where required, exclusively by the nomination party. Any mineral lease selected from this Tract and awarded by the Louisiana State Mineral Board shall be without warranty of any kind, either express, implied, or statutory, including, but not limited to, the implied warranties of merchantability and fitness for a particular purpose. Should the mineral lease awarded by the Louisiana State Mineral Board be subsequently modified, cancelled or abrogated due to the existence of conflicting leases, operating agreements, private claims or other future obligations or conditions which may affect all or any portion of the leased Tract, it shall not relieve the Lessee of the obligation to pay any bonus due thereon to the Louisiana State Mineral Board, nor shall the Louisiana State Mineral Board be obligated to refund any consideration paid by the Lessor prior to such modification, cancellation, or abrogation, including, but not limited to, bonuses, rentals and royalties.

NOTE: The State of Louisiana does hereby reserve, and this lease shall be subject to, the imprescriptible right of surface use in the nature of a servitude in favor of the Department of Natural Resources, including its Offices and Commissions, for the sole purpose of implementing, constructing, servicing and maintaining approved coastal zone management and/or restoration projects. Utilization of any and all rights derived under this lease by the mineral lessee, its agents, successors or assigns, shall not interfere with nor hinder the reasonable surface use by the

Department of Natural Resources, its Offices or Commissions, as herein above reserved.

NOTE: The Department of Wildlife and Fisheries has designated certain areas in the coastal waters of the State of Louisiana as Oyster Seed Bed Areas. The exact location of those Seed Bed Areas must be obtained from the Department of Wildlife and Fisheries and any work done under a mineral lease from the State of Louisiana may necessarily be conducted in conformity with the rules and regulations promulgated by the said Department of Wildlife and Fisheries for Oyster Seed Bed Areas.

Applicant: MCGINTY-DURHAM, INC.

Bidder	Cash Payment	Price/ Acre	Rental	Oil	Gas	Other

Legend

07010029

Active_Leases

DOQQ2004



TRACT 38832 - Plaquemines Parish, Louisiana

All of the lands now or formerly constituting the beds and bottoms of all water bodies of every nature and description the title of which vests in the State of Louisiana, together with all islands arising therein and other lands formed by accretion or by reliction, where allowed by law, excepting tax adjudicated lands, and not presently under mineral lease and cross hatched on January 10, 2007, situated in Plaquemines Parish, Louisiana, and more particularly described as follows: Begin at a point (Point of Beginning) having Coordinates of X = 2,504,811.73 and Y = 349,045.47; thence North 86 degrees 31 minutes 49 seconds East 3,503.19 feet to a point having Coordinates of X = 2,508,308.49 and Y = 349,257.49; thence South 0 degrees 34 minutes 23 seconds West 3,413.30 feet to a point having Coordinates of X = 2,508,274.35 and Y = 345,844.36; thence South 87 degrees 47 minutes 49 seconds West 3,470.17 feet to a point having Coordinates of X = 2,504,806.75 and Y = 345,710.96; thence North 0 degrees 5 minutes 08 seconds East 3,334.52 feet to the Point of Beginning, containing approximately **94 acres**, all as more particularly outlined on a plat on file in the Office of Mineral Resources, Department of Natural Resources. All bearings, distances and coordinates are based on Louisiana Coordinate System of 1927, (North or South Zone), where applicable.

NOTE: The above description of the Tract nominated for lease has been provided and corrected, where required, exclusively by the nomination party. Any mineral lease selected from this Tract and awarded by the Louisiana State Mineral Board shall be without warranty of any kind, either express, implied, or statutory, including, but not limited to, the implied warranties of merchantability and fitness for a particular purpose. Should the mineral lease awarded by the Louisiana State Mineral Board be subsequently modified, cancelled or abrogated due to the existence of conflicting leases, operating agreements, private claims or other future obligations or conditions which may affect all or any portion of the leased Tract, it shall not relieve the Lessee of the obligation to pay any bonus due thereon to the Louisiana State Mineral Board, nor shall the Louisiana State Mineral Board be obligated to refund any consideration paid by the Lessor prior to such modification, cancellation, or abrogation, including, but not limited to, bonuses, rentals and royalties.

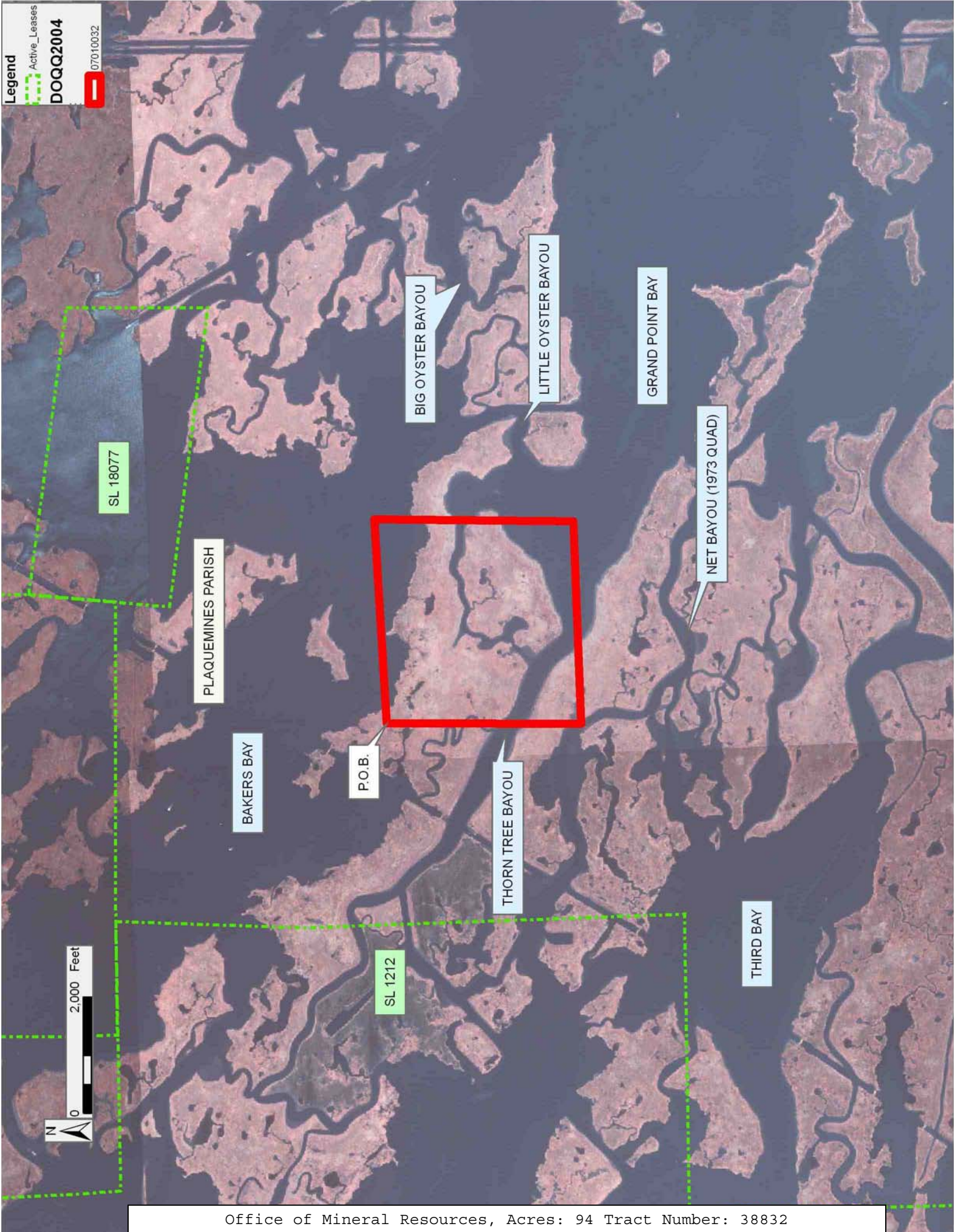
NOTE: The State of Louisiana does hereby reserve, and this lease shall be subject to, the imprescriptible right of surface use in the nature of a servitude in favor of the Department of Natural Resources, including its Offices and Commissions, for the sole purpose of implementing, constructing, servicing and maintaining approved coastal zone management and/or restoration projects. Utilization of any and all rights derived under this lease by the mineral lessee, its agents, successors or assigns, shall not interfere with nor hinder the reasonable surface use by the Department of Natural Resources, its Offices or Commissions, as herein above reserved.

NOTE: The Department of Wildlife and Fisheries has designated certain areas in the coastal waters of the State of Louisiana as Oyster Seed Bed Areas. The exact location of those Seed Bed Areas must be obtained from the Department of Wildlife and Fisheries and any work done under a mineral lease from the State of Louisiana may necessarily be conducted in conformity with the rules and regulations promulgated by the said Department of Wildlife and Fisheries for Oyster Seed Bed Areas.

Applicant: MCGINTY-DURHAM, INC.

Bidder	Cash Payment	Price/ Acre	Rental	Oil	Gas	Other

Legend
Active_Leases
DOQQ2004
07010032



TRACT 38833 - Plaquemines Parish, Louisiana

All of the lands now or formerly constituting the beds and bottoms of all water bodies of every nature and description the title of which vests in the State of Louisiana, together with all islands arising therein and other lands formed by accretion or by reliction, where allowed by law, excepting tax adjudicated lands, and not presently under mineral lease and cross hatched on January 10, 2007, situated in Plaquemines Parish, Louisiana, and more particularly described as follows: Begin at a point (Point of Beginning) having Coordinates of X = 2,506,799.97 and Y = 345,787.64; thence South 01 degree 20 minutes 18 seconds West 1,692.07 feet to a point having Coordinates of X = 2,506,760.45 and Y = 344,096.03; thence South 00 degrees 32 minutes 14 seconds East 2,101.83 feet to a point having Coordinates of X = 2,506,780.16 and Y = 341,994.29; thence South 00 degrees 31 minutes 14 seconds East 2,704.88 feet to a point having Coordinates of X = 2,506,804.74 and Y = 339,289.52; thence South 87 degrees 46 minutes 59 seconds West 5,092.02 feet to a point having Coordinates of X = 2,501,716.53 and Y = 339,092.55; thence Northerly approximately 6,495 feet to a point on the most Easterly East boundary line of State Lease No. 1212, as amended; thence North 87 degrees 47 minutes 49 seconds East approximately 5,320 feet to the Point of Beginning, containing approximately **332 acres**, all as more particularly outlined on a plat on file in the Office of Mineral Resources, Department of Natural Resources. All bearings, distances and coordinates are based on Louisiana Coordinate System of 1927, (North or South Zone), where applicable.

NOTE: The above description of the Tract nominated for lease has been provided and corrected, where required, exclusively by the nomination party. Any mineral lease selected from this Tract and awarded by the Louisiana State Mineral Board shall be without warranty of any kind, either express, implied, or statutory, including, but not limited to, the implied warranties of merchantability and fitness for a particular purpose. Should the mineral lease awarded by the Louisiana State Mineral Board be subsequently modified, cancelled or abrogated due to the existence of conflicting leases, operating agreements, private claims or other future obligations or conditions which may affect all or any portion of the leased Tract, it shall not relieve the Lessee of the obligation to pay any bonus due thereon to the Louisiana State Mineral Board, nor shall the Louisiana State Mineral Board be obligated to refund any consideration paid by the Lessor prior to such modification, cancellation, or abrogation, including, but not limited to, bonuses, rentals and royalties.

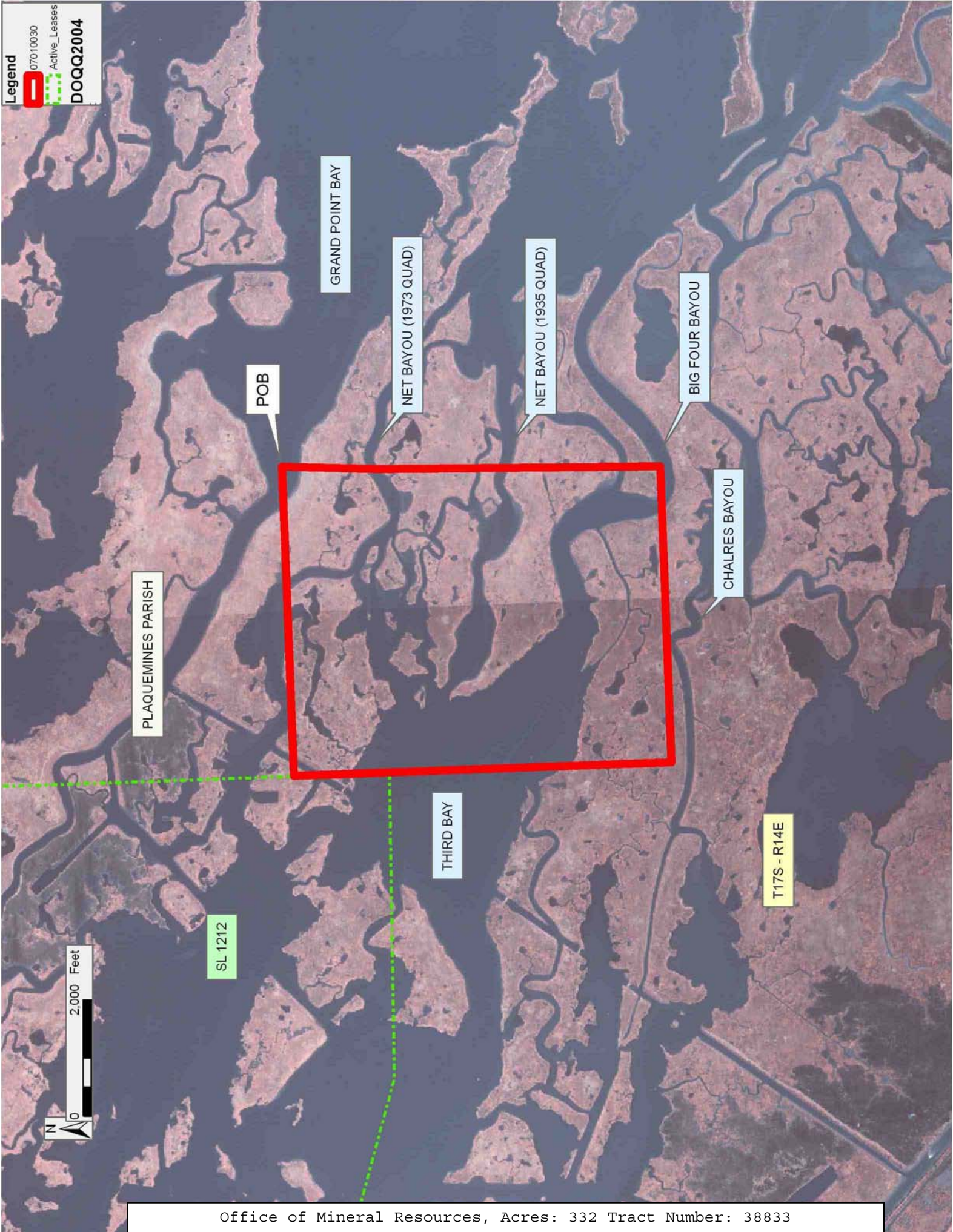
NOTE: The State of Louisiana does hereby reserve, and this lease shall be subject to, the imprescriptible right of surface use in the nature of a servitude in favor of the Department of Natural Resources, including its Offices and Commissions, for the sole purpose of implementing, constructing, servicing and maintaining approved coastal zone management and/or restoration projects. Utilization of any and all rights derived under this lease by the mineral lessee, its agents, successors or assigns,

shall not interfere with nor hinder the reasonable surface use by the Department of Natural Resources, its Offices or Commissions, as herein above reserved.

NOTE: The Department of Wildlife and Fisheries has designated certain areas in the coastal waters of the State of Louisiana as Oyster Seed Bed Areas. The exact location of those Seed Bed Areas must be obtained from the Department of Wildlife and Fisheries and any work done under a mineral lease from the State of Louisiana may necessarily be conducted in conformity with the rules and regulations promulgated by the said Department of Wildlife and Fisheries for Oyster Seed Bed Areas.

Applicant: MCGINTY-DURHAM, INC.

Bidder	Cash Payment	Price/ Acre	Rental	Oil	Gas	Other



TRACT 38834 - Plaquemines Parish, Louisiana

All of the lands now or formerly constituting the beds and bottoms of all water bodies of every nature and description the title of which vests in the State of Louisiana, together with all islands arising therein and other lands formed by accretion or by reliction, where allowed by law, excepting tax adjudicated lands, and not presently under mineral lease and cross hatched on January 10, 2007, situated in Plaquemines Parish, Louisiana, and more particularly described as follows: Begin at a point (Point of Beginning) having Coordinates of X = 2,506,799.97 and Y = 345,787.64; thence North 87 degrees 47 minutes 49 seconds East 5,866.60 feet to a point having Coordinates of X = 2,512,662.24 and Y = 346,013.16; thence South 0 degrees 21 minutes 12 seconds East 3,776.26 feet to a point having Coordinates of X = 2,512,685.53 and Y = 342,236.97; thence South 87 degrees 38 minutes 48 seconds West 5,910.35 feet to a point having Coordinates of X = 2,506,780.16 and Y = 341,994.29; thence North 0 degrees 32 minutes 14 seconds West 2,101.83 feet to a point having Coordinates of X = 2,506,760.45 and Y = 344,096.03; thence North 1 degree 20 minutes 18 seconds East 1,692.07 feet to the Point of Beginning, containing approximately **325 acres**, all as more particularly outlined on a plat on file in the Office of Mineral Resources, Department of Natural Resources. All bearings, distances and coordinates are based on Louisiana Coordinate System of 1927, (North or South Zone), where applicable.

NOTE: The above description of the Tract nominated for lease has been provided and corrected, where required, exclusively by the nomination party. Any mineral lease selected from this Tract and awarded by the Louisiana State Mineral Board shall be without warranty of any kind, either express, implied, or statutory, including, but not limited to, the implied warranties of merchantability and fitness for a particular purpose. Should the mineral lease awarded by the Louisiana State Mineral Board be subsequently modified, cancelled or abrogated due to the existence of conflicting leases, operating agreements, private claims or other future obligations or conditions which may affect all or any portion of the leased Tract, it shall not relieve the Lessee of the obligation to pay any bonus due thereon to the Louisiana State Mineral Board, nor shall the Louisiana State Mineral Board be obligated to refund any consideration paid by the Lessor prior to such modification, cancellation, or abrogation, including, but not limited to, bonuses, rentals and royalties.

NOTE: The State of Louisiana does hereby reserve, and this lease shall be subject to, the imprescriptible right of surface use in the nature of a servitude in favor of the Department of Natural Resources, including its Offices and Commissions, for the sole purpose of implementing, constructing, servicing and maintaining approved coastal zone management and/or restoration projects. Utilization of any and all rights derived under this lease by the mineral lessee, its agents, successors or assigns, shall not interfere with nor hinder the reasonable surface use by the Department of Natural Resources, its Offices or Commissions, as herein above reserved.

NOTE: The Department of Wildlife and Fisheries has designated certain areas in the coastal waters of the State of Louisiana as Oyster Seed Bed Areas. The exact location of those Seed Bed Areas must be obtained from the Department of Wildlife and Fisheries and any work done under a mineral lease from the State of Louisiana may necessarily be conducted in conformity with the rules and regulations promulgated by the said Department of Wildlife and Fisheries for Oyster Seed Bed Areas.

Applicant: MCGINTY-DURHAM, INC.

Bidder	Cash Payment	Price/ Acre	Rental	Oil	Gas	Other



TRACT 38835 - Plaquemines Parish, Louisiana

All of the lands now or formerly constituting the beds and bottoms of all water bodies of every nature and description the title of which vests in the State of Louisiana, together with all islands arising therein and other lands formed by accretion or by reliction, where allowed by law, excepting tax adjudicated lands, and not presently under mineral lease and cross hatched on January 10, 2007, situated in Plaquemines Parish, Louisiana, and more particularly described as follows: Begin at a point (Point of Beginning) having Coordinates of X = 2,506,780.16 and Y = 341,994.29; thence North 87 degrees 38 minutes 48 seconds East 5,910.35 feet to a point having Coordinates of X = 2,512,685.53 and Y = 342,236.97; thence South 0 degrees 21 minutes 52 seconds East 5,003.01 feet to a point having Coordinates of X = 2,512,717.35 and Y = 337,234.06; thence South 87 degrees 38 minutes 48 seconds West 5,896.71 feet to a point having Coordinates of X = 2,506,825.62 and Y = 336,991.94; thence North 0 degrees 31 minutes 14 seconds West 5,002.56 feet to the Point of Beginning, containing approximately **363 acres**, all as more particularly outlined on a plat on file in the Office of Mineral Resources, Department of Natural Resources. All bearings, distances and coordinates are based on Louisiana Coordinate System of 1927, (North or South Zone), where applicable.

NOTE: The above description of the Tract nominated for lease has been provided and corrected, where required, exclusively by the nomination party. Any mineral lease selected from this Tract and awarded by the Louisiana State Mineral Board shall be without warranty of any kind, either express, implied, or statutory, including, but not limited to, the implied warranties of merchantability and fitness for a particular purpose. Should the mineral lease awarded by the Louisiana State Mineral Board be subsequently modified, cancelled or abrogated due to the existence of conflicting leases, operating agreements, private claims or other future obligations or conditions which may affect all or any portion of the leased Tract, it shall not relieve the Lessee of the obligation to pay any bonus due thereon to the Louisiana State Mineral Board, nor shall the Louisiana State Mineral Board be obligated to refund any consideration paid by the Lessor prior to such modification, cancellation, or abrogation, including, but not limited to, bonuses, rentals and royalties.

NOTE: The State of Louisiana does hereby reserve, and this lease shall be subject to, the imprescriptible right of surface use in the nature of a servitude in favor of the Department of Natural Resources, including its Offices and Commissions, for the sole purpose of implementing, constructing, servicing and maintaining approved coastal zone management and/or restoration projects. Utilization of any and all rights derived under this lease by the mineral lessee, its agents, successors or assigns, shall not interfere with nor hinder the reasonable surface use by the Department of Natural Resources, its Offices or Commissions, as herein above reserved.

NOTE: The Department of Wildlife and Fisheries has designated certain areas in the coastal waters of the State of Louisiana as Oyster Seed Bed Areas. The exact location of those Seed Bed Areas must be obtained from the Department of Wildlife and Fisheries and any work done under a mineral lease from the State of Louisiana may necessarily be conducted in conformity with the rules and regulations promulgated by the said Department of Wildlife and Fisheries for Oyster Seed Bed Areas.

Applicant: MCGINTY-DURHAM, INC.

Bidder	Cash Payment	Price/ Acre	Rental	Oil	Gas	Other



TRACT 38836 - Portion of Block 26, Main Pass Area, Revised, Plaquemines Parish, Louisiana

All of the lands now or formerly constituting the beds and bottoms of all water bodies of every nature and description the title of which vests in the State of Louisiana, together with all islands arising therein and other lands formed by accretion or by reliction, where allowed by law, excepting tax adjudicated lands, and not presently under mineral lease and cross hatched on January 10, 2007, situated in Plaquemines Parish, Louisiana, and more particularly described as follows: Beginning at the Northwest corner of Block 26, Main Pass Area, Revised, having Coordinates of X = 2,620,600.00 and Y = 322,330.00; thence East 7,375.00 feet along the North line of said Block 26 to a point having Coordinates of X = 2,627,975.00 and Y = 322,330.00; thence South 7,375.00 feet to a point having Coordinates of X = 2,627,975.00 and Y = 314,955.00; thence West 7,375.00 feet to a point on the West line of said Block 26, having Coordinates of X = 2,620,600.00 and Y = 314,955.00; thence North 7,375.00 feet along the West line of said Block 26 to the point of beginning, containing approximately **1,248.64 acres**, all as more particularly outlined on a plat on file in the Office of Mineral Resources, Department of Natural Resources. All bearings, distances and coordinates are based on Louisiana Coordinate System of 1927, (North or South Zone), where applicable.

NOTE: The above description of the Tract nominated for lease has been provided and corrected, where required, exclusively by the nomination party. Any mineral lease selected from this Tract and awarded by the Louisiana State Mineral Board shall be without warranty of any kind, either express, implied, or statutory, including, but not limited to, the implied warranties of merchantability and fitness for a particular purpose. Should the mineral lease awarded by the Louisiana State Mineral Board be subsequently modified, cancelled or abrogated due to the existence of conflicting leases, operating agreements, private claims or other future obligations or conditions which may affect all or any portion of the leased Tract, it shall not relieve the Lessee of the obligation to pay any bonus due thereon to the Louisiana State Mineral Board, nor shall the Louisiana State Mineral Board be obligated to refund any consideration paid by the Lessor prior to such modification, cancellation, or abrogation, including, but not limited to, bonuses, rentals and royalties.

NOTE: The State of Louisiana does hereby reserve, and this lease shall be subject to, the imprescriptible right of surface use in the nature of a servitude in favor of the Department of Natural Resources, including its Offices and Commissions, for the sole purpose of implementing, constructing, servicing and maintaining approved coastal zone management and/or restoration projects. Utilization of any and all rights derived under this lease by the mineral lessee, its agents, successors or assigns, shall not interfere with nor hinder the reasonable surface use by the Department of Natural Resources, its Offices or Commissions, as herein above reserved.

Applicant: LOUISIANA MINERALS MANAGEMENT

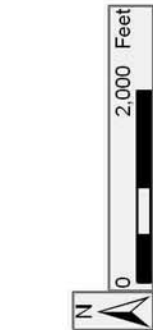
Bidder	Cash Payment	Price/ Acre	Rental	Oil	Gas	Other

Legend

07010020

Blocks

Active_Leases

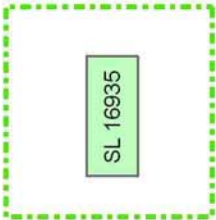


PLAQUEMINES PARISH

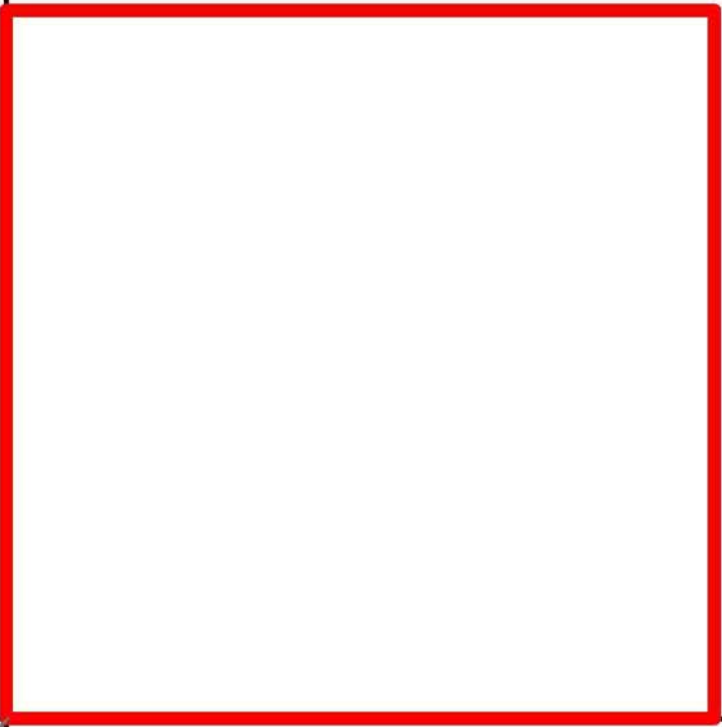
MAIN PASS AREA, REVISED

GULF OF MEXICO

MP0021



MP0026



P.O.B.

MP0022

MP0025



TRACT 38837 - Portion of Block 26, Main Pass Area, Revised, Plaquemines Parish, Louisiana

All of the lands now or formerly constituting the beds and bottoms of all water bodies of every nature and description the title of which vests in the State of Louisiana, together with all islands arising therein and other lands formed by accretion or by reliction, where allowed by law, excepting tax adjudicated lands, and not presently under mineral lease and cross hatched on January 10, 2007, situated in Plaquemines Parish, Louisiana, and more particularly described as follows: Beginning at a point on the West line of Block 26, Main Pass Area, Revised, having Coordinates of X = 2,620,600.00 and Y = 314,955.00; thence East 7,375.00 feet to a point having Coordinates of X = 2,627,975.00 and Y = 314,955.00; thence South 7,375.00 feet to a point on the South line of said Block 26 having Coordinates of X = 2,627,975.00 and Y = 307,580.00; thence West 7,375.00 feet along the South line of said Block 26 to its Southwest corner having Coordinates of X = 2,620,600.00 and Y = 307,580.00; thence North 7,375.00 feet along the West line of said Block 26 to the point of beginning, containing approximately **1,248.64 acres**, all as more particularly outlined on a plat on file in the Office of Mineral Resources, Department of Natural Resources. All bearings, distances and coordinates are based on Louisiana Coordinate System of 1927, (North or South Zone), where applicable.

NOTE: The above description of the Tract nominated for lease has been provided and corrected, where required, exclusively by the nomination party. Any mineral lease selected from this Tract and awarded by the Louisiana State Mineral Board shall be without warranty of any kind, either express, implied, or statutory, including, but not limited to, the implied warranties of merchantability and fitness for a particular purpose. Should the mineral lease awarded by the Louisiana State Mineral Board be subsequently modified, cancelled or abrogated due to the existence of conflicting leases, operating agreements, private claims or other future obligations or conditions which may affect all or any portion of the leased Tract, it shall not relieve the Lessee of the obligation to pay any bonus due thereon to the Louisiana State Mineral Board, nor shall the Louisiana State Mineral Board be obligated to refund any consideration paid by the Lessor prior to such modification, cancellation, or abrogation, including, but not limited to, bonuses, rentals and royalties.

NOTE: The State of Louisiana does hereby reserve, and this lease shall be subject to, the imprescriptible right of surface use in the nature of a servitude in favor of the Department of Natural Resources, including its Offices and Commissions, for the sole purpose of implementing, constructing, servicing and maintaining approved coastal zone management and/or restoration projects. Utilization of any and all rights derived under this lease by the mineral lessee, its agents, successors or assigns, shall not interfere with nor hinder the reasonable surface use by the Department of Natural Resources, its Offices or Commissions, as herein above reserved.

Applicant: LOUISIANA MINERALS MANAGEMENT

Bidder	Cash Payment	Price/ Acre	Rental	Oil	Gas	Other

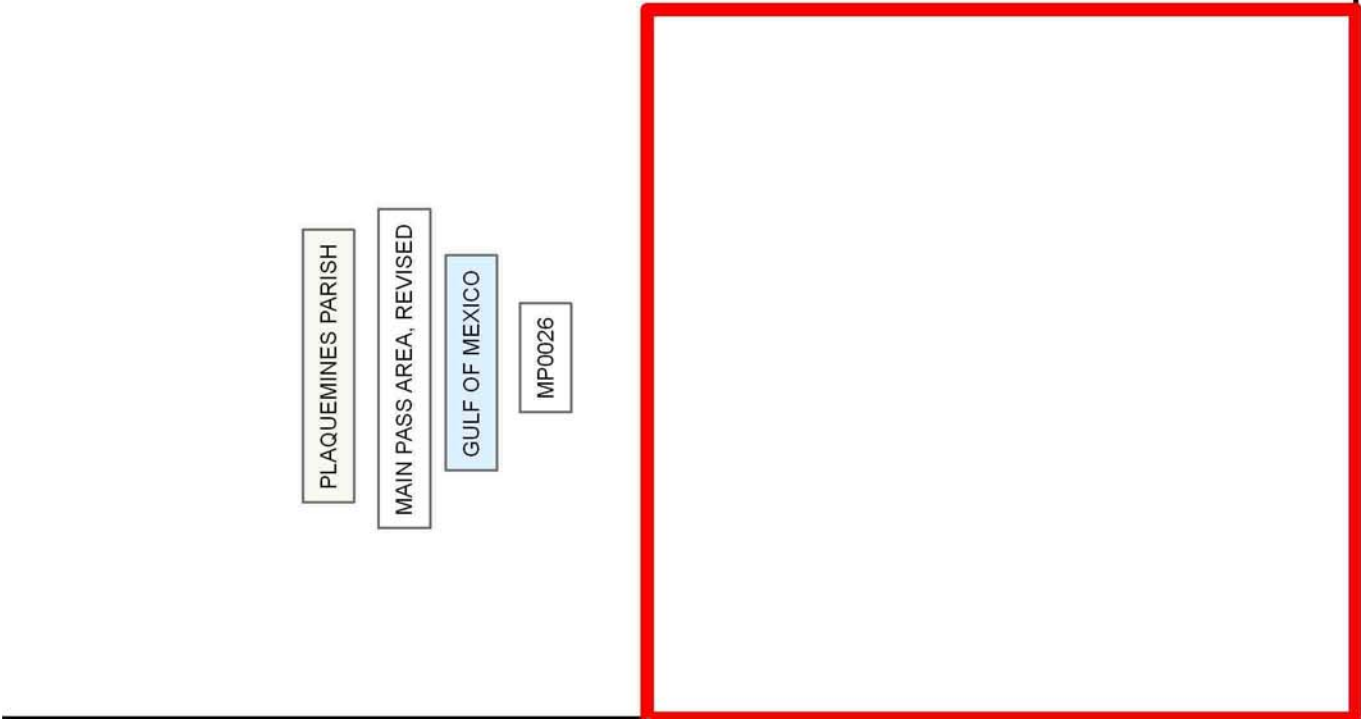
Legend

07010021

Blocks

Active_Leases

SL 16935



PLAQUEMINES PARISH

MAIN PASS AREA, REVISED

GULF OF MEXICO

MP0026

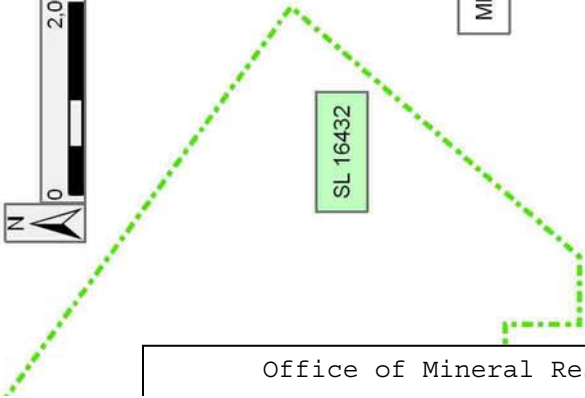
MP0031



P.O.B.

MP0025

SL 16432



MP0032

SL 14441



TRACT 38838 - Plaquemines Parish, Louisiana

All of the lands now or formerly constituting the beds and bottoms of all water bodies of every nature and description the title of which vests in the State of Louisiana, together with all islands arising therein and other lands formed by accretion or by reliction, where allowed by law, excepting tax adjudicated lands, and not presently under mineral lease and cross hatched on January 10, 2007, situated in Plaquemines Parish, Louisiana, and more particularly described as follows: Beginning at the Northeast corner of State Lease No. 18672 having Coordinates of X = 2,564,330.00 and Y = 258,600.00; thence East 15,965.50 feet to a point having Coordinates of X = 2,580,295.50 and Y = 258,600.00; thence South 14,235.87 feet to a point having Coordinates of X = 2,580,295.50 and Y = 244,364.13; thence West approximately 10,882 feet to a point of intersection with the East boundary of State Lease No. 192, Bay Pomme D'or Area, as amended; thence along the boundary of said State Lease No. 192 the following: Northwesterly, Easterly, Southeasterly, Northeasterly and Northwesterly to a point of intersection with State Lease No. 13566, as amended; thence along the boundary of said State Lease No. 13566 North 84 degrees 58 minutes 27 seconds East approximately 277 feet to a point having Coordinates of X = 2,571,037.97 and Y = 246,777.77; thence continuing along the boundary of said State Lease No. 13566 the following: North 73 degrees 06 minutes 02 seconds East 526.78 feet, North 69 degrees 19 minutes 59 seconds East 596.48 feet, North 70 degrees 14 minutes 17 seconds East 568.89 feet, North 88 degrees 18 minutes 36 seconds East 199.04 feet, South 79 degrees 45 minutes 38 seconds East 236.72 feet, South 71 degrees 29 minutes 39 seconds East 600.91 feet, South 65 degrees 47 minutes 56 seconds East 504.79 feet, and North 2,111.45 feet to its Northeast corner and the Southeast corner of AO 0220 (Tract 4) having Coordinates of X = 2,574,097.65 and Y = 249,011.35; thence along the boundary of said AO 0220 (Tract 4) the following: North 314.62 feet, South 87 degrees 59 minutes 55 seconds West 27.67 feet, South 87 degrees 29 minutes 18 seconds West 256.13 feet, South 85 degrees 56 minutes 40 seconds West 574.84 feet, South 82 degrees 09 minutes 43 seconds West 388.93 feet, South 75 degrees 14 minutes 26 seconds West 433.31 feet, and South 65 degrees 46 minutes 16 seconds West 113.27 feet to its Northwest corner and a point of intersection with said State Lease No. 13566 having Coordinates of X = 2,572,333.11 and Y = 249,063.21; thence along the boundary of said State Lease No. 13566 the following: South 65 degrees 46 minutes 12 seconds West 300.35 feet, South 59 degrees 53 minutes 35 seconds West 433.10 feet, and South 55 degrees 33 minutes 45 seconds West 444.88 feet to its point of intersection with said AO 0220 (Tract 3) having Coordinates of X = 2,571,317.63 and Y = 248,471.11; thence along said AO 0220 (Tract 3) the following: South 60 degrees 34 minutes 57 seconds West 158.25 feet, South 72 degrees 26 minutes 15 seconds West 134.15 feet, and North 70 degrees 34 minutes 43 seconds West approximately 166 feet to its Northwest corner and a point of intersection with said State Lease No. 192; thence along the boundary of said State Lease No. 192 the following: Northerly, Westerly and Southwesterly to a point of intersection with a line having a Coordinate of Y = 244,417.00; thence

West approximately 2,608 feet to a point having Coordinates of X = 2,561,515.00 and Y = 244,417.00; thence North 316.60 feet to a point having Coordinates of X = 2,561,515.00 and Y = 244,733.60; thence North 62 degrees 30 minutes 39 seconds East 3,173.27 feet to a point having Coordinates of X = 2,564,330.00 and Y = 246,198.32; thence North 9,181.68 feet to the Southeast corner of said State Lease No. 18672 having Coordinates of X = 2,564,330.00 and Y = 255,380.00; thence continue North 3,220.00 feet along the east line of said State Lease No. 18672 to the Point of Beginning, **LESS AND EXCEPT** Operating Agreement 0220 in its entirety, comprised of Tracts 1, 2, 3 and 4 and being more particularly described as follows:

Tract 1: Beginning at a point having Coordinates of X = 2,569,100.99 and Y = 249,475.53; thence North 88 degrees 03 minutes 17 seconds East 215.87 feet to a point having Coordinates of X = 2,569,316.73 and Y = 249,482.86; thence South 59 degrees 25 minutes 10 seconds East 153.02 feet to a point having Coordinates of X = 2,569,448.47 and Y = 249,405.01; thence South 20 degrees 42 minutes 04 seconds West 120.30 feet to a point having Coordinates of X = 2,569,405.95 and Y = 249,292.48; thence North 59 degrees 01 minutes 32 seconds West 355.68 feet to the Point of Beginning, containing 0.687 acres,

Tract 2 (Area A): Beginning at a point having Coordinates of X = 2,569,448.47 and Y = 249,405.01; thence South 59 degrees 24 minutes 59 seconds East 271.80 feet to a point having Coordinates of X = 2,569,682.46 and Y = 249,266.72; thence South 18 degrees 13 minutes 19 seconds West 46.70 feet to a point having Coordinates of X = 2,569,667.85 and Y = 249,222.36; thence South 36 degrees 30 minutes 45 seconds West 88.35 feet to a point having Coordinates of X = 2,569,615.29 and Y = 249,151.35; thence North 56 degrees 00 minutes 50 seconds West 252.47 feet to a point having Coordinates of X = 2,569,405.95 and Y = 249,292.48; thence North 20 degrees 42 minutes 04 seconds East 120.30 feet to the Point of Beginning, containing 0.771 acres,

Tract 2 (Area B): Beginning at a point on the Northern boundary of East RB SUA established under Office of Conservation Order No. 1039 East 1 having Coordinates of X = 2,570,027.80 and Y = 249,037.83; thence along the Northern boundary of East RB SUA South 55 degrees 34 minutes 47 seconds East 78.14 feet to a point having Coordinates of X = 2,570,092.26 and Y = 248,993.66; thence South 36 degrees 31 minutes 45 seconds West 105.39 feet to a point having Coordinates of X = 2,570,029.53 and Y = 248,908.97; thence South 25 degrees 25 minutes 41 seconds West 40.93 feet to a point on the Northern boundary of G RB SUA established by Office of Conservation Order No. 1039 C 3 having Coordinates of X = 2,570,011.95 and Y = 248,872.01; thence along the Northern boundary of G RB SUA North 53 degrees 49 minutes 07 seconds West 84.71 feet to a point having Coordinates of X = 2,569,943.58 and Y = 248,922.02; thence North 35 degrees 04 minutes 21 seconds East 114.30 feet to a point having Coordinates of X = 2,570,009.26 and Y = 249,015.56; thence North 39 degrees 47 minutes 00 seconds East 28.98 feet to the Point of Beginning, containing 0.264 acres,

Tract 3: Beginning at a point having Coordinates of X = 2,571,317.63 and Y = 248,471.11; thence South 50 degrees 17 minutes 16 seconds West 199.03 feet to a point having Coordinates of X = 2,571,164.53 and Y = 248,343.95; thence South 43 degrees 59 minutes 39 seconds West 175.82 feet to a point having Coordinates of X = 2,571,042.41 and Y = 248,217.46; thence South 75 degrees 34 minutes 36 seconds West 77.20 feet to a point having Coordinates of X = 2,570,967.64 and Y = 248,198.23; thence South 68 degrees 09 minutes 55 seconds West 9.54 feet to a point having Coordinates of X = 2,570,958.78 and Y = 248,194.68; thence South 67 degrees 56 minutes 31 seconds West 1.75 feet to a point having Coordinates of X = 2,570,957.16 and Y = 248,194.03; thence South 73 degrees 37 minutes 27 seconds West 1.33 feet to a point having Coordinates of X = 2,570,955.89 and Y = 248,193.65; thence North 64 degrees 38 minutes 48 seconds West 98.34 feet to a point having Coordinates of X = 2,570,867.02 and Y = 248,235.76; thence North 14 degrees 02 minutes 18 seconds East 106.39 feet to a point having Coordinates of X = 2,570,892.83 and Y = 248,338.97; thence North 02 degrees 32 minutes 27 seconds West 73.73 feet to a point having Coordinates of X = 2,570,889.56 and Y = 248,412.63; thence South 51 degrees 21 minutes 44 seconds East 7.13 feet to a point having Coordinates of X = 2,570,895.13 and Y = 248,408.18; thence South 70 degrees 34 minutes 43 seconds East 166.22 feet to a point having Coordinates of X = 2,571,051.89 and Y = 248,352.91; thence North 72 degrees 26 minutes 15 seconds East 134.15 feet to a point having Coordinates of X = 2,571,179.79 and Y = 248,393.39; thence North 60 degrees 34 minutes 57 seconds East 158.25 feet to the point of beginning, containing 0.96 acres,

Tract 4: beginning at a point having Coordinates of X = 2,572,333.11 and Y = 249,063.21; thence North 65 degrees 46 minutes 16 seconds East 113.27 feet to a point having Coordinates of X = 2,572,436.40 and Y = 249,109.69; thence North 75 degrees 14 minutes 26 seconds East 433.31 feet to a point having Coordinates of X = 2,572,855.41 and Y = 249,220.08; thence North 82 degrees 09 minutes 43 seconds East 388.93 feet to a point having Coordinates of X = 2,573,240.71 and Y = 249,273.12; thence North 85 degrees 56 minutes 40 seconds East 574.84 feet to a point having Coordinates of X = 2,573,814.11 and Y = 249,313.78; thence North 87 degrees 29 minutes 18 seconds East 256.13 feet to a point having Coordinates of X = 2,574,070.00 and Y = 249,325.00; thence North 87 degrees 59 minutes 55 seconds East 27.67 feet to a point having Coordinates of X = 2,574,097.65 and Y = 249,325.97; thence South 314.62 feet to the Northeast corner of State Lease No. 13566 having Coordinates of X = 2,574,097.65 and Y = 249,011.35; thence along the boundary of said State Lease No. 13566 the following: South 85 degrees 31 minutes 07 seconds West 353.87 feet to a point having Coordinates of X = 2,573,744.86 and Y = 248,983.70, South 78 degrees 26 minutes 25 seconds West 361.35 feet to a point having Coordinates of X = 2,573,390.84 and Y = 248,911.29, South 80 degrees 04 minutes 14 seconds West 556.50 feet to a point having Coordinates of X = 2,572,842.68 and Y = 248,815.33, South 78 degrees 27 minutes 14 seconds West 57.35 feet to a point having Coordinates of X = 2,572,786.49 and Y = 248,803.85, and North 60 degrees 13 minutes 40

seconds West 522.32 feet to the point of beginning, containing approximately 13.02 acres,

ALSO LESS AND EXCEPT any portion of State Lease No. 192 that may fall within the above described tract, containing approximately **2,446 acres**, all as more particularly outlined on a plat on file in the Office of Mineral Resources, Department of Natural Resources. All bearings, distances and coordinates are based on Louisiana Coordinate System of 1927, (North or South Zone), where applicable.

NOTE: The above description of the Tract nominated for lease has been provided and corrected, where required, exclusively by the nomination party. Any mineral lease selected from this Tract and awarded by the Louisiana State Mineral Board shall be without warranty of any kind, either express, implied, or statutory, including, but not limited to, the implied warranties of merchantability and fitness for a particular purpose. Should the mineral lease awarded by the Louisiana State Mineral Board be subsequently modified, cancelled or abrogated due to the existence of conflicting leases, operating agreements, private claims or other future obligations or conditions which may affect all or any portion of the leased Tract, it shall not relieve the Lessee of the obligation to pay any bonus due thereon to the Louisiana State Mineral Board, nor shall the Louisiana State Mineral Board be obligated to refund any consideration paid by the Lessor prior to such modification, cancellation, or abrogation, including, but not limited to, bonuses, rentals and royalties.

NOTE: The State of Louisiana does hereby reserve, and this lease shall be subject to, the imprescriptible right of surface use in the nature of a servitude in favor of the Department of Natural Resources, including its Offices and Commissions, for the sole purpose of implementing, constructing, servicing and maintaining approved coastal zone management and/or restoration projects. Utilization of any and all rights derived under this lease by the mineral lessee, its agents, successors or assigns, shall not interfere with nor hinder the reasonable surface use by the Department of Natural Resources, its Offices or Commissions, as herein above reserved.

NOTE: The Department of Wildlife and Fisheries has designated certain areas in the coastal waters of the State of Louisiana as Oyster Seed Bed Areas. The exact location of those Seed Bed Areas must be obtained from the Department of Wildlife and Fisheries and any work done under a mineral lease from the State of Louisiana may necessarily be conducted in conformity with the rules and regulations promulgated by the said Department of Wildlife and Fisheries for Oyster Seed Bed Areas.

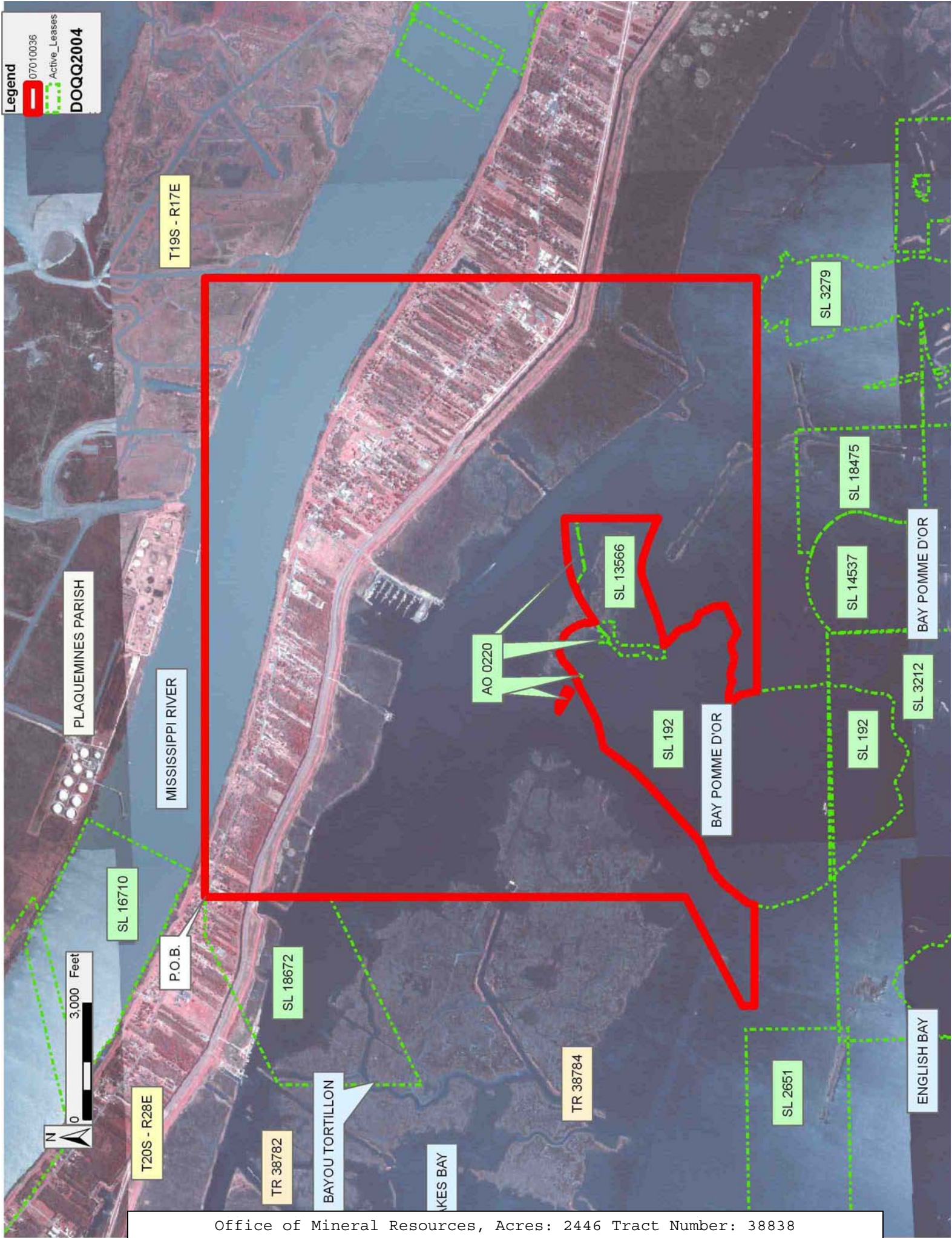
Applicant: CYPRESS ENERGY CORPORATION

Bidder	Cash Payment	Price/ Acre	Rental	Oil	Gas	Other

Legend

 07010036
Active_Leases

DOQQ2004



TRACT 38839 - Plaquemines Parish, Louisiana

All of the lands now or formerly constituting the beds and bottoms of all water bodies of every nature and description the title of which vests in the State of Louisiana, together with all islands arising therein and other lands formed by accretion or by reliction, where allowed by law, excepting tax adjudicated lands, and not presently under mineral lease and cross hatched on January 10, 2007, situated in Plaquemines Parish, Louisiana, and more particularly described as follows: Beginning at a point having Coordinates of X = 2,580,295.50 and Y = 258,600.00; thence East 4,141.60 feet to a point having Coordinates of X = 2,584,437.10 and Y = 258,600.00; thence South 9,820.74 feet to a point having Coordinates of X = 2,584,437.10 and Y = 248,779.26; thence South 75 degrees 39 minutes 56 seconds East 6,024.82 feet to a point having Coordinates of X = 2,590,274.35 and Y = 247,287.62; thence South 7,167.62 feet to a point having Coordinates of X = 2,590,274.35 and Y = 240,120.00; thence West 4,986.22 feet to a point having Coordinates of X = 2,585,288.13 and Y = 240,120.00; thence North 62 degrees 06 minutes 18 seconds West 1,034.18 feet to a point on the East boundary of State Lease No. 17447 having Coordinates of X = 2,584,374.11 and Y = 240,603.85; thence along the East boundary of said State Lease No. 17447 North 01 degrees 40 minutes 39 seconds West 139.03 feet to the Northeast corner of said State Lease No. 17447 having Coordinates of X = 2,584,370.04 and Y = 240,742.82; thence along the north boundary of said State Lease No. 17447 North 89 degrees 33 minutes 41 seconds West 262.26 feet to a point having Coordinates of X = 2,584,107.79 and Y = 240,744.83; thence leaving said State Lease No. 17447 North 62 degrees 06 minutes 18 seconds West 1,878.98 feet to a point having Coordinates of X = 2,582,447.14 and Y = 241,623.92; thence North 2,740.21 feet to a point having Coordinates of X = 2,582,447.14 and Y = 244,364.13; thence West 2,151.64 feet to a point having Coordinates of X = 2,580,295.50 and Y = 244,364.13; thence North 14,235.87 feet to the point of beginning, containing approximately **780 acres**, all as more particularly outlined on a plat on file in the Office of Mineral Resources, Department of Natural Resources. All bearings, distances and coordinates are based on Louisiana Coordinate System of 1927, (North or South Zone), where applicable.

NOTE: The above description of the Tract nominated for lease has been provided and corrected, where required, exclusively by the nomination party. Any mineral lease selected from this Tract and awarded by the Louisiana State Mineral Board shall be without warranty of any kind, either express, implied, or statutory, including, but not limited to, the implied warranties of merchantability and fitness for a particular purpose. Should the mineral lease awarded by the Louisiana State Mineral Board be subsequently modified, cancelled or abrogated due to the existence of conflicting leases, operating agreements, private claims or other future obligations or conditions which may affect all or any portion of the leased Tract, it shall not relieve the Lessee of the obligation to pay any bonus due thereon to the Louisiana State Mineral Board, nor shall the Louisiana State Mineral Board be obligated to refund any consideration

paid by the Lessor prior to such modification, cancellation, or abrogation, including, but not limited to, bonuses, rentals and royalties.

NOTE: The State of Louisiana does hereby reserve, and this lease shall be subject to, the imprescriptible right of surface use in the nature of a servitude in favor of the Department of Natural Resources, including its Offices and Commissions, for the sole purpose of implementing, constructing, servicing and maintaining approved coastal zone management and/or restoration projects. Utilization of any and all rights derived under this lease by the mineral lessee, its agents, successors or assigns, shall not interfere with nor hinder the reasonable surface use by the Department of Natural Resources, its Offices or Commissions, as herein above reserved.

NOTE: The Department of Wildlife and Fisheries has designated certain areas in the coastal waters of the State of Louisiana as Oyster Seed Bed Areas. The exact location of those Seed Bed Areas must be obtained from the Department of Wildlife and Fisheries and any work done under a mineral lease from the State of Louisiana may necessarily be conducted in conformity with the rules and regulations promulgated by the said Department of Wildlife and Fisheries for Oyster Seed Bed Areas.

Applicant: CYPRESS ENERGY CORPORATION

Bidder	Cash Payment	Price/ Acre	Rental	Oil	Gas	Other

Legend

07010038

Active_Leases

DOQQ2004

