

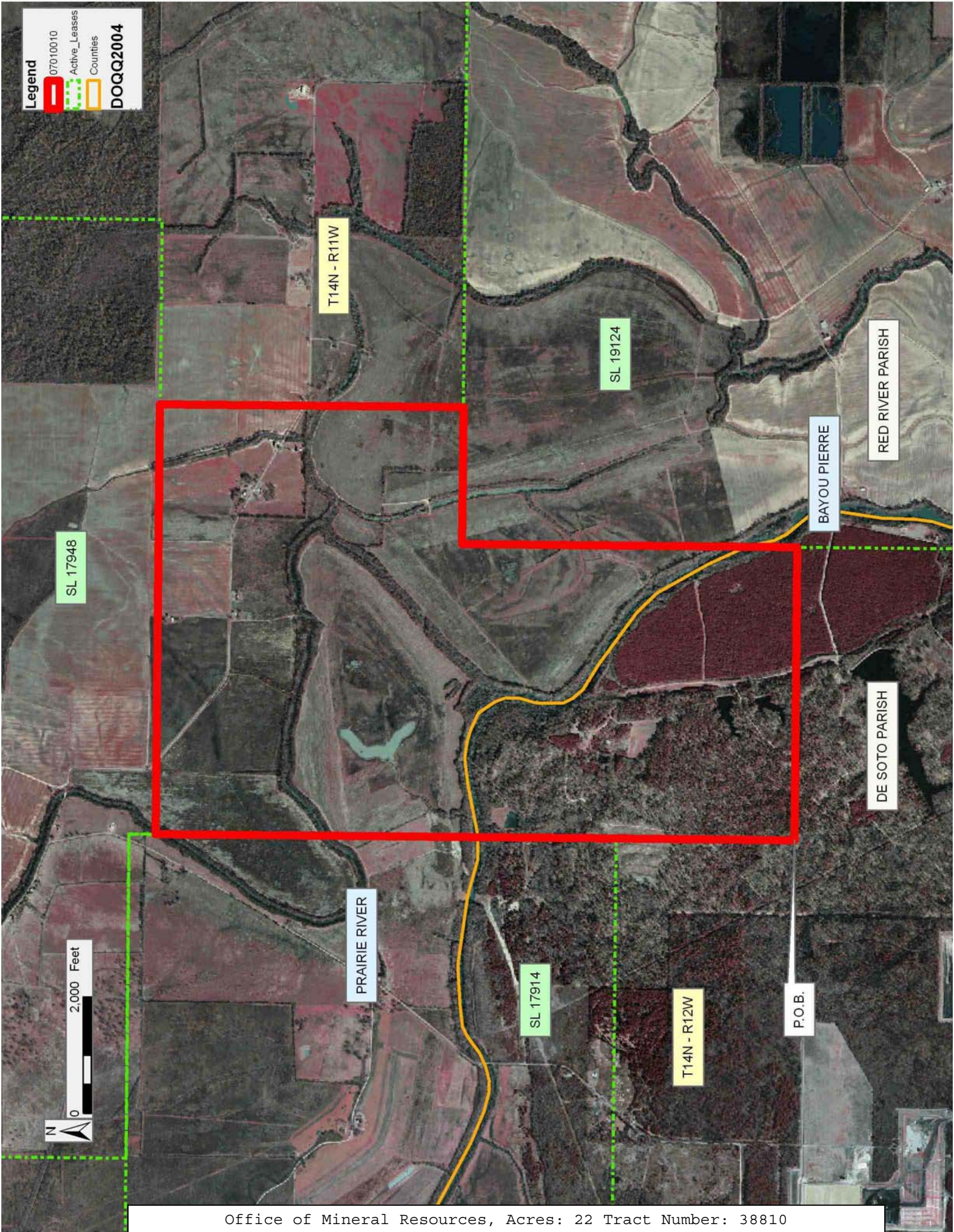
TRACT 38810 - De Soto and Red River Parishes, Louisiana

All of the lands now or formerly constituting the beds and bottoms of all water bodies of every nature and description the title of which vests in the State of Louisiana, together with all islands arising therein and other lands formed by accretion or by reliction, where allowed by law, excepting tax adjudicated lands, and not presently under mineral lease and cross hatched on January 10, 2007, situated in De Soto and Red River Parishes, Louisiana, and more particularly described as follows: Beginning at a point having Coordinates of X = 1,677,660.00 and Y = 551,244.00; thence North 3,066.00 feet to the Southeast corner of State Lease No. 17914 having Coordinates of X = 1,677,660.00 and Y = 554,310.00; thence North 7,890.00 feet along the East boundary of said State Lease No. 17914 to a point on the South boundary of State Lease No. 17948 having Coordinates of X = 1,677,660.00 and Y = 562,200.00; thence East 7,376.00 feet along the South boundary of said State Lease No. 17948 to a point having Coordinates of X = 1,685,036.00 and Y = 562,200.00; thence South 5,206.00 feet to a point on the North boundary of State Lease No. 19124 having Coordinates of X = 1,685,036.00 and Y = 556,994.00; thence along the boundary of said State Lease No. 19124 the following courses: West 2,350.00 feet to its Northwest corner having Coordinates of X = 1,682,686.00 and Y = 556,994.00 and South 5,750.00 feet to a point on its West boundary having Coordinates of X = 1,682,686.00 and Y = 551,244.00; thence West 5,026.00 feet to the point of beginning, containing approximately **22 acres**, all as more particularly outlined on a plat on file in the Office of Mineral Resources, Department of Natural Resources. All bearings, distances and coordinates are based on Louisiana Coordinate System of 1927, (North or South Zone), where applicable.

NOTE: The above description of the Tract nominated for lease has been provided and corrected, where required, exclusively by the nomination party. Any mineral lease selected from this Tract and awarded by the Louisiana State Mineral Board shall be without warranty of any kind, either express, implied, or statutory, including, but not limited to, the implied warranties of merchantability and fitness for a particular purpose. Should the mineral lease awarded by the Louisiana State Mineral Board be subsequently modified, cancelled or abrogated due to the existence of conflicting leases, operating agreements, private claims or other future obligations or conditions which may affect all or any portion of the leased Tract, it shall not relieve the Lessee of the obligation to pay any bonus due thereon to the Louisiana State Mineral Board, nor shall the Louisiana State Mineral Board be obligated to refund any consideration paid by the Lessor prior to such modification, cancellation, or abrogation, including, but not limited to, bonuses, rentals and royalties.

Applicant: STAFF OFFICE OF MINERAL RESOURCES

Bidder	Cash Payment	Price/ Acre	Rental	Oil	Gas	Other



TRACT 38811 - Lasalle and Rapides Parishes, Louisiana

All of the lands now or formerly constituting the beds and bottoms of all water bodies of every nature and description the title of which vests in the State of Louisiana, together with all islands arising therein and other lands formed by accretion or by reliction, where allowed by law, excepting tax adjudicated lands, and not presently under mineral lease and cross hatched on January 10, 2007, situated in Lasalle and Rapides Parishes, Louisiana, and more particularly described as follows: Beginning at a point having Coordinates of X = 2,103,200.00 and Y = 293,845.00; thence East approximately 15,531 feet on a line, or extension thereof, to a point said to be on the shoreline of Catahoula Lake having a Coordinate of Y = 293,845.00; thence meander along said shoreline the following: Southerly, Westerly, Northwesterly and Southeasterly to a point where said shoreline intersects the Northern bank of Big Saline Bayou; thence meander along said bank the following: Southeasterly and Southerly to a point having a Coordinate of Y = 283,845.00; thence West approximately 4,616 feet to a point having Coordinates of X = 2,103,200.00 and Y = 283,845.00; thence North 10,000.00 feet to the point of beginning, **LESS AND EXCEPT** any portion of the above described tract that may be located within the Dewey W. Willis Wildlife Management Area, containing approximately **2,500 acres**, all as more particularly outlined on a plat on file in the Office of Mineral Resources, Department of Natural Resources. All bearings, distances and coordinates are based on Louisiana Coordinate System of 1927, (North or South Zone), where applicable.

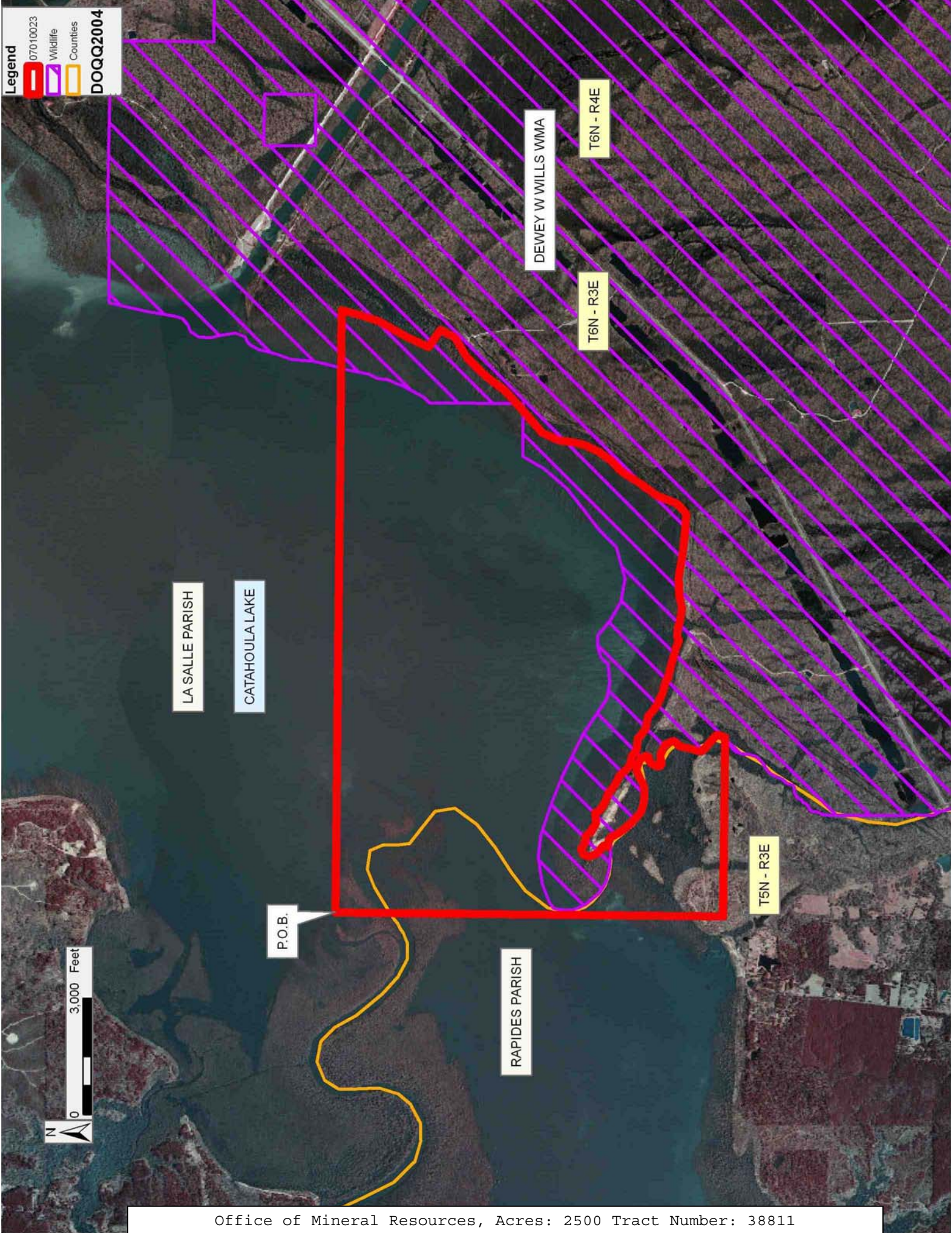
NOTE: The above description of the Tract nominated for lease has been provided and corrected, where required, exclusively by the nomination party. Any mineral lease selected from this Tract and awarded by the Louisiana State Mineral Board shall be without warranty of any kind, either express, implied, or statutory, including, but not limited to, the implied warranties of merchantability and fitness for a particular purpose. Should the mineral lease awarded by the Louisiana State Mineral Board be subsequently modified, cancelled or abrogated due to the existence of conflicting leases, operating agreements, private claims or other future obligations or conditions which may affect all or any portion of the leased Tract, it shall not relieve the Lessee of the obligation to pay any bonus due thereon to the Louisiana State Mineral Board, nor shall the Louisiana State Mineral Board be obligated to refund any consideration paid by the Lessor prior to such modification, cancellation, or abrogation, including, but not limited to, bonuses, rentals and royalties.

Applicant: THEOPHILUS OIL, GAS & LAND SERVICES, LLC

Bidder	Cash Payment	Price/ Acre	Rental	Oil	Gas	Other

Legend

- 07010023
- Wildlife
- Counties
- DOQQ2004



TRACT 38812 - Pointe Coupee Parish, Louisiana

All of the lands now or formerly constituting the beds and bottoms of all water bodies of every nature and description the title of which vests in the State of Louisiana, together with all islands arising therein and other lands formed by accretion or by reliction, where allowed by law, excepting tax adjudicated lands, and not presently under mineral lease and cross hatched on January 10, 2007, situated in Pointe Coupee Parish, Louisiana, and more particularly described as follows: A certain lot or parcel of ground, situated in the Parish of Pointe Coupee, Louisiana, and being designated as TRACT D 3 on a map by Charles L. Costner, C.E., dated September, 1974, titled MAP SHOWING THE SURVEY AND REMOVAL OF TRACT D 3, FROM THE SOUTHERN END OF ORIGINAL TRACT D OF THE P.V. ROUGON ESTATE LYING IN SECTIONS 49 AND 50, T.4.S, R.10.E, POINTE COUPEE PARISH, LOUISIANA; Said Tract D 3 measuring three hundred feet front on Louisiana Highway 3131, by a depth of eight hundred seventeen and 37/100 feet on its northern side and eight hundred two and 61/100 feet on its southern side, and measuring three hundred and 36/100 feet across the rear, being the same property acquired by the State of Louisiana as per act of record COB 119, No. 61 in the office of the Clerk, Parish of Pointe Coupee, Louisiana, containing **5.57 acres**, all as more particularly outlined on a plat on file in the Office of Mineral Resources, Department of Natural Resources. All bearings, distances and coordinates are based on Louisiana Coordinate System of 1927, (North or South Zone), where applicable.

NOTE: The above description of the Tract nominated for lease has been provided and corrected, where required, exclusively by the nomination party. Any mineral lease selected from this Tract and awarded by the Louisiana State Mineral Board shall be without warranty of any kind, either express, implied, or statutory, including, but not limited to, the implied warranties of merchantability and fitness for a particular purpose. Should the mineral lease awarded by the Louisiana State Mineral Board be subsequently modified, cancelled or abrogated due to the existence of conflicting leases, operating agreements, private claims or other future obligations or conditions which may affect all or any portion of the leased Tract, it shall not relieve the Lessee of the obligation to pay any bonus due thereon to the Louisiana State Mineral Board, nor shall the Louisiana State Mineral Board be obligated to refund any consideration paid by the Lessor prior to such modification, cancellation, or abrogation, including, but not limited to, bonuses, rentals and royalties.

NOTE: There shall be no surface operations on the property leased.

Applicant: LESTER MCCANN

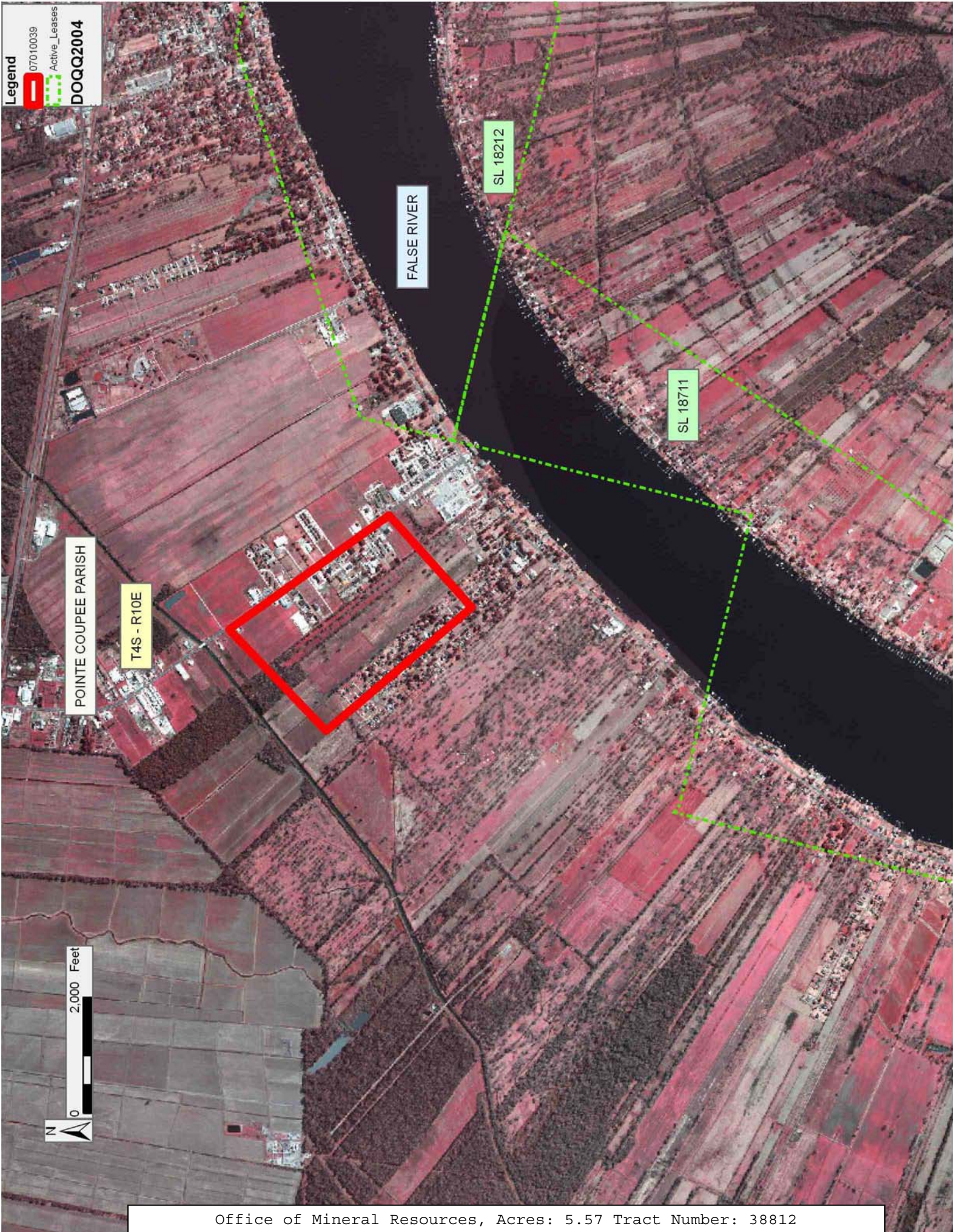
Bidder	Cash Payment	Price/ Acre	Rental	Oil	Gas	Other

Legend

07010039

Active_Leases

DOQQ2004



TRACT 38813 - Beauregard and Calcasieu Parishes, Louisiana

All of the lands now or formerly constituting the beds and bottoms of all water bodies of every nature and description the title of which vests in the State of Louisiana, together with all islands arising therein and other lands formed by accretion or by reliction, where allowed by law, excepting tax adjudicated lands, and not presently under mineral lease and cross hatched on January 10, 2007, situated in Beauregard and Calcasieu Parishes, Louisiana, and more particularly described as follows: Beginning at the Northeast corner of State Lease No. 19128 having Coordinates of X = 1,370,575.06 and Y = 632,654.34; thence North 89 degrees 47 minutes 55 seconds West 1,317.66 feet along the North boundary of said State Lease No. 19128 to its Northwest corner having Coordinates of X = 1,369,257.41 and Y = 632,658.97; thence West 1,682.35 feet to a point having Coordinates of X = 1,367,575.06 and Y = 632,658.97; thence North 4,995.37 feet to a point having Coordinates of X = 1,367,575.06 and Y = 637,654.34; thence East 3,000.00 feet to a point having Coordinates of X = 1,370,575.06 and Y = 637,654.34; thence South 5,000.00 feet to the point of beginning, containing approximately **10 acres**, all as more particularly outlined on a plat on file in the Office of Mineral Resources, Department of Natural Resources. All bearings, distances and coordinates are based on Louisiana Coordinate System of 1927, (North or South Zone), where applicable.

NOTE: The above description of the Tract nominated for lease has been provided and corrected, where required, exclusively by the nomination party. Any mineral lease selected from this Tract and awarded by the Louisiana State Mineral Board shall be without warranty of any kind, either express, implied, or statutory, including, but not limited to, the implied warranties of merchantability and fitness for a particular purpose. Should the mineral lease awarded by the Louisiana State Mineral Board be subsequently modified, cancelled or abrogated due to the existence of conflicting leases, operating agreements, private claims or other future obligations or conditions which may affect all or any portion of the leased Tract, it shall not relieve the Lessee of the obligation to pay any bonus due thereon to the Louisiana State Mineral Board, nor shall the Louisiana State Mineral Board be obligated to refund any consideration paid by the Lessor prior to such modification, cancellation, or abrogation, including, but not limited to, bonuses, rentals and royalties.

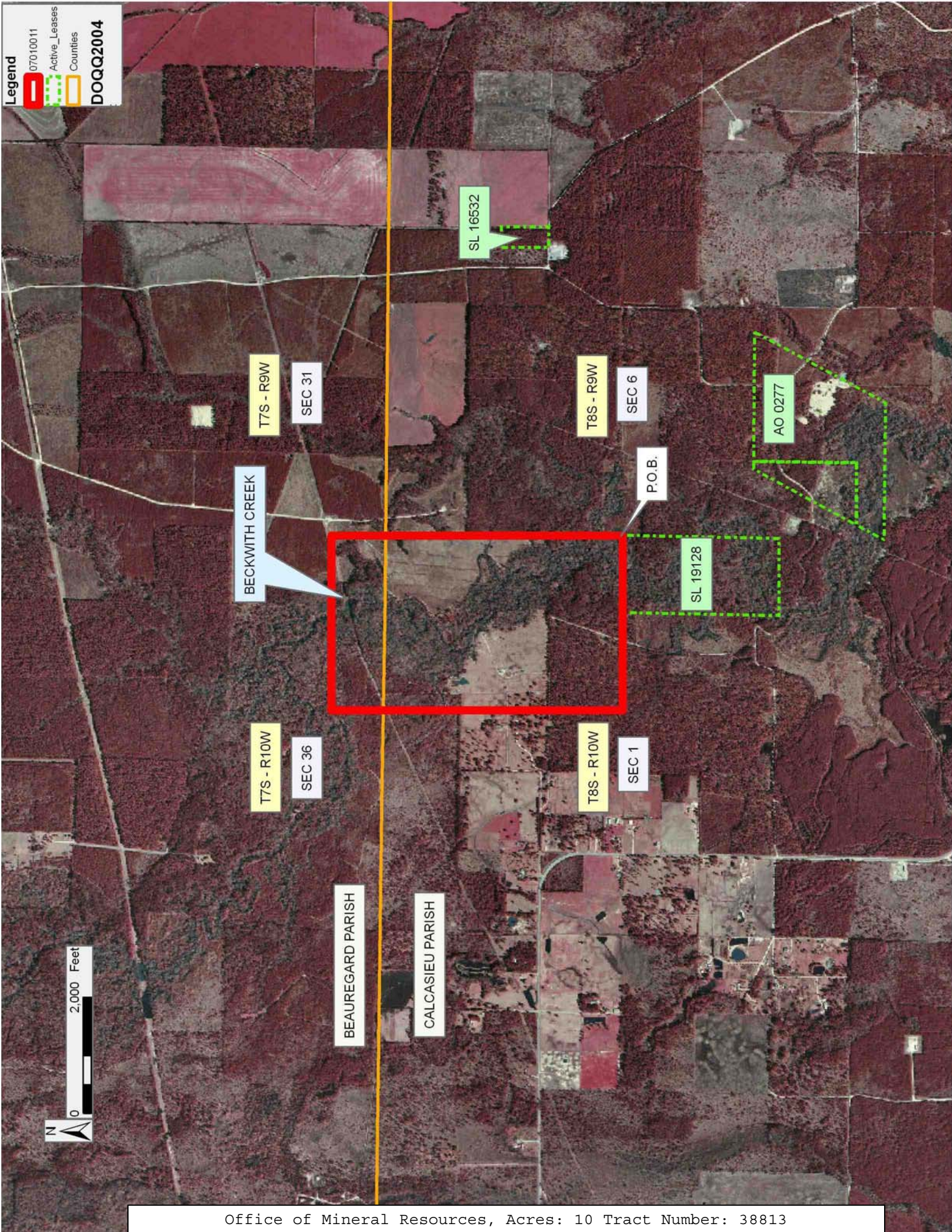
NOTE: The Office of Mineral Resources will require a minimum bonus of \$225 per acre and a minimum royalty of 23%.

Applicant: STAFF OFFICE OF MINERAL RESOURCES

Bidder	Cash Payment	Price/ Acre	Rental	Oil	Gas	Other

Legend

- 07010011
- Active_Leases
- Counties
- DOQQ2004



TRACT 38814 - Ascension and Iberville Parishes, Louisiana

All of the lands now or formerly constituting the beds and bottoms of all water bodies of every nature and description the title of which vests in the State of Louisiana, together with all islands arising therein and other lands formed by accretion or by reliction, where allowed by law, excepting tax adjudicated lands, and not presently under mineral lease and cross hatched on January 10, 2007, situated in Ascension and Iberville Parishes, Louisiana, and more particularly described as follows: Beginning at a point having Coordinates of X = 2,081,955.00 and Y = 564,252.00; thence East 6,833.00 feet to a point having Coordinates of X = 2,088,788.00 and Y = 564,252.00; thence South 5,058.00 feet to a point having Coordinates of X = 2,088,788.00 and Y = 559,194.00; thence West 6,833.00 feet to a point having Coordinates of X = 2,081,955.00 and Y = 559,194.00; thence North 5,058.00 feet to the point of beginning, containing approximately **497 acres**, all as more particularly outlined on a plat on file in the Office of Mineral Resources, Department of Natural Resources. All bearings, distances and coordinates are based on Louisiana Coordinate System of 1927, (North or South Zone), where applicable.

NOTE: The above description of the Tract nominated for lease has been provided and corrected, where required, exclusively by the nomination party. Any mineral lease selected from this Tract and awarded by the Louisiana State Mineral Board shall be without warranty of any kind, either express, implied, or statutory, including, but not limited to, the implied warranties of merchantability and fitness for a particular purpose. Should the mineral lease awarded by the Louisiana State Mineral Board be subsequently modified, cancelled or abrogated due to the existence of conflicting leases, operating agreements, private claims or other future obligations or conditions which may affect all or any portion of the leased Tract, it shall not relieve the Lessee of the obligation to pay any bonus due thereon to the Louisiana State Mineral Board, nor shall the Louisiana State Mineral Board be obligated to refund any consideration paid by the Lessor prior to such modification, cancellation, or abrogation, including, but not limited to, bonuses, rentals and royalties.

Applicant: LAND RESOURCES, INC.

Bidder	Cash Payment	Price/ Acre	Rental	Oil	Gas	Other

Legend

07010026

Counties

DOQQ2004

0

2,000 Feet

N

ASCENSION PARISH

IBERVILLE PARISH

P.O.B.

MISSISSIPPI RIVER

TRACT 38815 - Iberville Parish, Louisiana

All of the lands now or formerly constituting the beds and bottoms of all water bodies of every nature and description the title of which vests in the State of Louisiana, together with all islands arising therein and other lands formed by accretion or by reliction, where allowed by law, excepting tax adjudicated lands, and not presently under mineral lease and cross hatched on January 10, 2007, situated in Iberville Parish, Louisiana, and more particularly described as follows: Beginning at a point having Coordinates of X = 2,064,580.00 and Y = 555,260.00; thence North 51 degrees 06 minutes 35 seconds East 8,350.99 feet to a point having Coordinates of X = 2,071,080.00 and Y = 560,503.00; thence South 5,485.00 feet to a point having Coordinates of X = 2,071,080.00 and Y = 555,018.00; thence South 52 degrees 26 minutes 33 seconds West 8,199.39 feet to a point having Coordinates of X = 2,064,580.00 and Y = 550,020.00; thence North 5,240.00 feet to the point of beginning, **LESS AND EXCEPT** any state agency tracts that may lie within the above described tract, the nominated tract containing approximately **544 acres**, all as more particularly outlined on a plat on file in the Office of Mineral Resources, Department of Natural Resources. All bearings, distances and coordinates are based on Louisiana Coordinate System of 1927, (North or South Zone), where applicable.

NOTE: The above description of the Tract nominated for lease has been provided and corrected, where required, exclusively by the nomination party. Any mineral lease selected from this Tract and awarded by the Louisiana State Mineral Board shall be without warranty of any kind, either express, implied, or statutory, including, but not limited to, the implied warranties of merchantability and fitness for a particular purpose. Should the mineral lease awarded by the Louisiana State Mineral Board be subsequently modified, cancelled or abrogated due to the existence of conflicting leases, operating agreements, private claims or other future obligations or conditions which may affect all or any portion of the leased Tract, it shall not relieve the Lessee of the obligation to pay any bonus due thereon to the Louisiana State Mineral Board, nor shall the Louisiana State Mineral Board be obligated to refund any consideration paid by the Lessor prior to such modification, cancellation, or abrogation, including, but not limited to, bonuses, rentals and royalties.

Bidder	Cash Payment	Price/ Acre	Rental	Oil	Gas	Other

Applicant: LAND RESOURCES, INC.

Legend

07010024

Active_Leases

DOQQ2004

MISSISSIPPI RIVER

IBERVILLE PARISH

P.O.B.



TRACT 38816 - Acadia and Jefferson Davis Parishes, Louisiana

All of the lands now or formerly constituting the beds and bottoms of all water bodies of every nature and description the title of which vests in the State of Louisiana, together with all islands arising therein and other lands formed by accretion or by reliction, where allowed by law, excepting tax adjudicated lands, and not presently under mineral lease and cross hatched on January 10, 2007, situated in Acadia and Jefferson Davis Parishes, Louisiana, and more particularly described as follows: Beginning at a point having Coordinates of X = 1,591,850.89 and Y = 549,024.78; thence East 6,149.11 feet to a point having Coordinates X = 1,598,000.00 and Y = 549,024.78; thence South 14,569.78 feet to a point being the Northeast corner of State Lease No. 18792 having Coordinates X = 1,598,000.00 and Y = 534,455.00; thence West 8,000.00 feet along the North line of said State Lease No. 18792 to its Northwest corner to a point having Coordinates X = 1,590,000.00 and Y = 534,455.00; thence North 4,545.00 feet to a point having Coordinates X = 1,590,000.00 and Y = 539,000.00; thence North 10 degrees 27 minutes 39 seconds East 10,194.21 feet to the point of beginning, containing approximately **270 acres**, all as more particularly outlined on a plat on file in the Office of Mineral Resources, Department of Natural Resources. All bearings, distances and coordinates are based on Louisiana Coordinate System of 1927, (North or South Zone), where applicable.

NOTE: The above description of the Tract nominated for lease has been provided and corrected, where required, exclusively by the nomination party. Any mineral lease selected from this Tract and awarded by the Louisiana State Mineral Board shall be without warranty of any kind, either express, implied, or statutory, including, but not limited to, the implied warranties of merchantability and fitness for a particular purpose. Should the mineral lease awarded by the Louisiana State Mineral Board be subsequently modified, cancelled or abrogated due to the existence of conflicting leases, operating agreements, private claims or other future obligations or conditions which may affect all or any portion of the leased Tract, it shall not relieve the Lessee of the obligation to pay any bonus due thereon to the Louisiana State Mineral Board, nor shall the Louisiana State Mineral Board be obligated to refund any consideration paid by the Lessor prior to such modification, cancellation, or abrogation, including, but not limited to, bonuses, rentals and royalties.

Applicant: DELTA LANDS EXPLORATION, INC.

Bidder	Cash Payment	Price/ Acre	Rental	Oil	Gas	Other

Legend

07010048

Active_Leases

Counties

DOQQ2004

0

3,000 Feet

N

ACADIA PARISH

JEFFERSON DAVIS PARISH

MERMENTAU RIVER

SL 18060

TR 38755

T10S - R2W

SEC 29

SEC 32

SEC 19

SEC 30

SEC 31

SEC 36

SL 18792

P.O.B.

SEC 24

SEC 25

T10S - R3W

Office of Mineral Resources, Acres: 270 Tract Number: 38816

TRACT 38817 - Portion of Blocks 4, 5, and 6, North Lake Borgne Area, St. Bernard Parish, Louisiana

All of the lands now or formerly constituting the beds and bottoms of all water bodies of every nature and description the title of which vests in the State of Louisiana, together with all islands arising therein and other lands formed by accretion or by reliction, where allowed by law, excepting tax adjudicated lands, and not presently under mineral lease and cross hatched on January 10, 2007, situated in St. Bernard Parish, Louisiana, and more particularly described as follows: Beginning at a point having Coordinates of X = 2,557,390.00 and Y = 521,754.23; thence East 5,280.00 feet to a point having Coordinates of X = 2,562,670.00 and Y = 521,754.23; thence South 15,859.66 feet to a point having Coordinates of X = 2,562,670.00 and Y = 505,894.57; thence West 5,280.00 to a point having Coordinates of X = 2,557,390.00 and Y = 505,894.59; thence North 15,859.64 feet to the point of beginning, containing approximately **1,922.38 acres**, all as more particularly outlined on a plat on file in the Office of Mineral Resources, Department of Natural Resources. All bearings, distances and coordinates are based on Louisiana Coordinate System of 1927, (North or South Zone), where applicable.

NOTE: The above description of the Tract nominated for lease has been provided and corrected, where required, exclusively by the nomination party. Any mineral lease selected from this Tract and awarded by the Louisiana State Mineral Board shall be without warranty of any kind, either express, implied, or statutory, including, but not limited to, the implied warranties of merchantability and fitness for a particular purpose. Should the mineral lease awarded by the Louisiana State Mineral Board be subsequently modified, cancelled or abrogated due to the existence of conflicting leases, operating agreements, private claims or other future obligations or conditions which may affect all or any portion of the leased Tract, it shall not relieve the Lessee of the obligation to pay any bonus due thereon to the Louisiana State Mineral Board, nor shall the Louisiana State Mineral Board be obligated to refund any consideration paid by the Lessor prior to such modification, cancellation, or abrogation, including, but not limited to, bonuses, rentals and royalties.

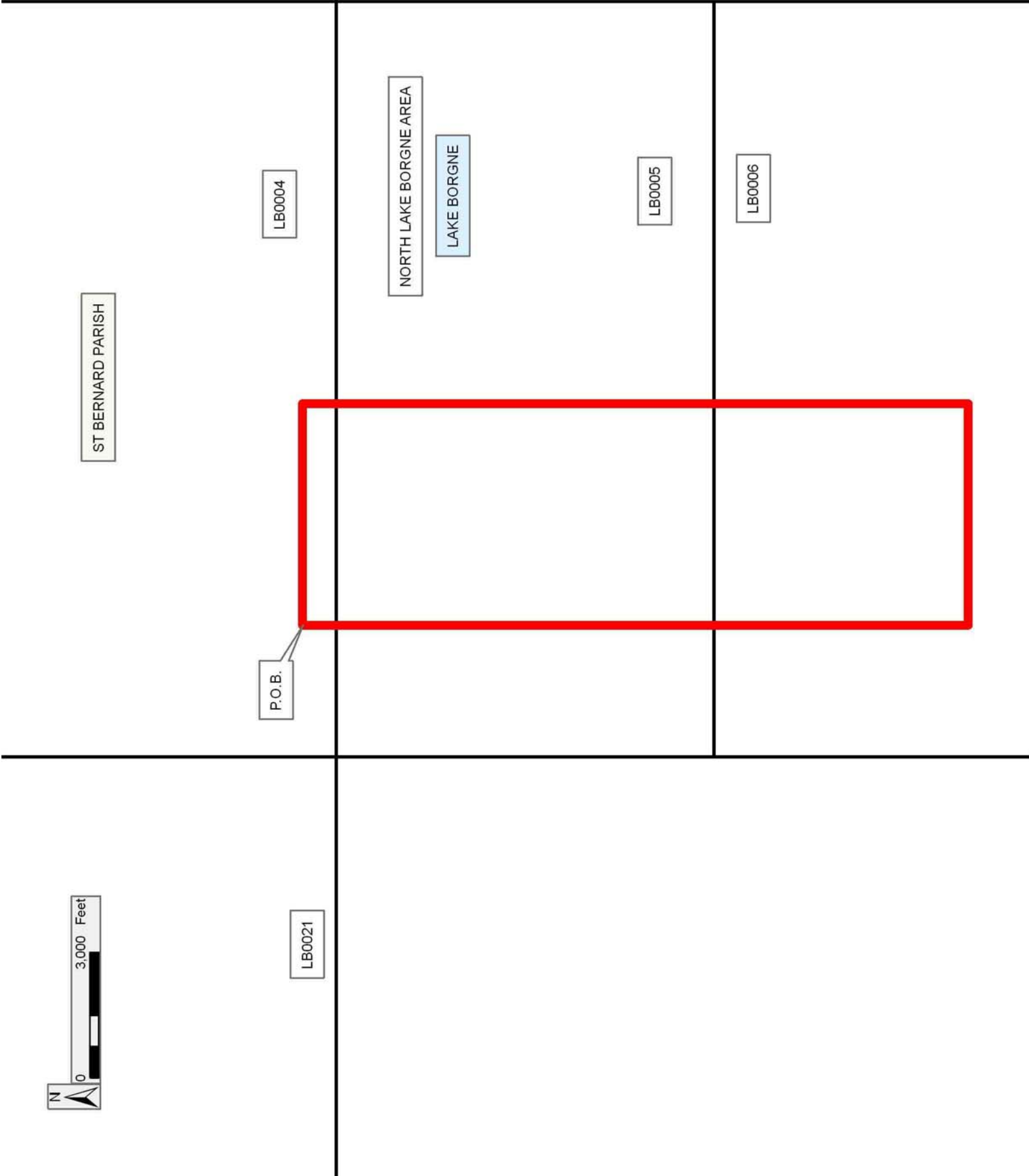
NOTE: The Office of Mineral Resources will require a minimum bonus of \$230 per acre and a minimum royalty of 23%.

NOTE: The State of Louisiana does hereby reserve, and this lease shall be subject to, the imprescriptible right of surface use in the nature of a servitude in favor of the Department of Natural Resources, including its Offices and Commissions, for the sole purpose of implementing, constructing, servicing and maintaining approved coastal zone management and/or restoration projects. Utilization of any and all rights derived under this lease by the mineral lessee, its agents, successors or assigns, shall not interfere with nor hinder the reasonable surface use by the Department of Natural Resources, its Offices or Commissions, as herein above reserved.

NOTE: The Department of Wildlife and Fisheries has designated certain areas in the coastal waters of the State of Louisiana as Oyster Seed Bed Areas. The exact location of those Seed Bed Areas must be obtained from the Department of Wildlife and Fisheries and any work done under a mineral lease from the State of Louisiana may necessarily be conducted in conformity with the rules and regulations promulgated by the said Department of Wildlife and Fisheries for Oyster Seed Bed Areas.

Applicant: MERLIN OIL & GAS, INC.

Bidder	Cash Payment	Price/ Acre	Rental	Oil	Gas	Other



TRACT 38818 - Portion of Blocks 4, 5, and 7, North Lake Borgne Area, St. Bernard Parish, Louisiana

All of the lands now or formerly constituting the beds and bottoms of all water bodies of every nature and description the title of which vests in the State of Louisiana, together with all islands arising therein and other lands formed by accretion or by reliction, where allowed by law, excepting tax adjudicated lands, and not presently under mineral lease and cross hatched on January 10, 2007, situated in St. Bernard Parish, Louisiana, and more particularly described as follows: Beginning at a point having Coordinates of X = 2,562,670.00 and Y = 521,754.23 within the boundaries of Block LB0004; thence East 9,709.81 feet to a point within the boundaries of Block LB0007 having Coordinates of X = 2,572,379.81 and Y = 521,754.23; thence South 7,929.82 feet to a point having Coordinates of X = 2,572,379.81 and Y = 513,824.41 ; thence West 9,709.81 to a point within the boundaries of Block LB0005 having Coordinates of X = 2,562,670.00 and Y = 513,824.41; thence North 7,929.82 feet to the point of beginning, containing approximately **1,767.61 acres**, all as more particularly outlined on a plat on file in the Office of Mineral Resources, Department of Natural Resources. All bearings, distances and coordinates are based on Louisiana Coordinate System of 1927, (North or South Zone), where applicable.

NOTE: The above description of the Tract nominated for lease has been provided and corrected, where required, exclusively by the nomination party. Any mineral lease selected from this Tract and awarded by the Louisiana State Mineral Board shall be without warranty of any kind, either express, implied, or statutory, including, but not limited to, the implied warranties of merchantability and fitness for a particular purpose. Should the mineral lease awarded by the Louisiana State Mineral Board be subsequently modified, cancelled or abrogated due to the existence of conflicting leases, operating agreements, private claims or other future obligations or conditions which may affect all or any portion of the leased Tract, it shall not relieve the Lessee of the obligation to pay any bonus due thereon to the Louisiana State Mineral Board, nor shall the Louisiana State Mineral Board be obligated to refund any consideration paid by the Lessor prior to such modification, cancellation, or abrogation, including, but not limited to, bonuses, rentals and royalties.

NOTE: The Office of Mineral Resources will require a minimum bonus of \$230 per acre and a minimum royalty of 23%.

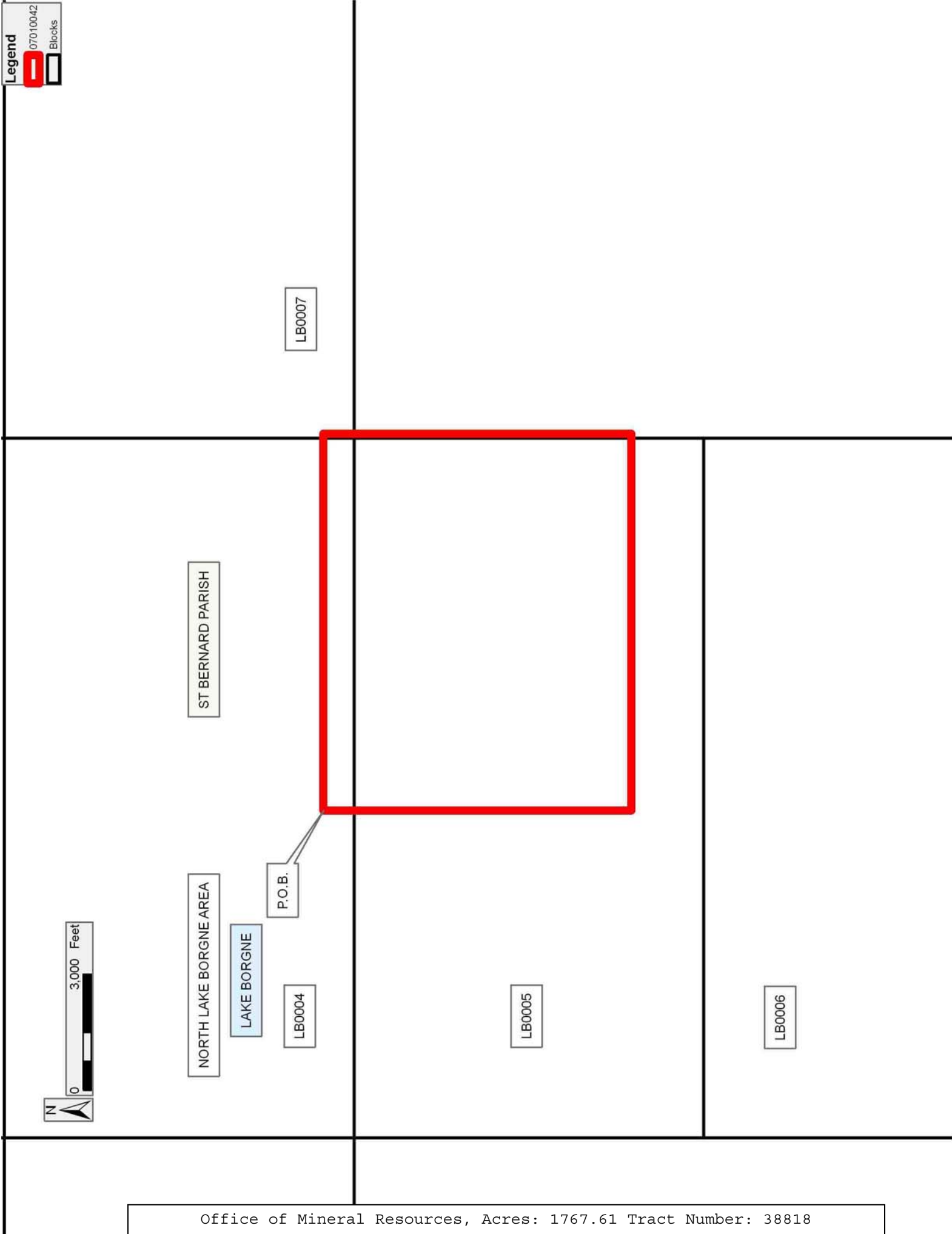
NOTE: The State of Louisiana does hereby reserve, and this lease shall be subject to, the imprescriptible right of surface use in the nature of a servitude in favor of the Department of Natural Resources, including its Offices and Commissions, for the sole purpose of implementing, constructing, servicing and maintaining approved coastal zone management and/or restoration projects. Utilization of any and all rights derived under this lease by the mineral lessee, its agents, successors or assigns, shall not interfere with nor hinder the reasonable surface use by the

Department of Natural Resources, its Offices or Commissions, as herein above reserved.

NOTE: The Department of Wildlife and Fisheries has designated certain areas in the coastal waters of the State of Louisiana as Oyster Seed Bed Areas. The exact location of those Seed Bed Areas must be obtained from the Department of Wildlife and Fisheries and any work done under a mineral lease from the State of Louisiana may necessarily be conducted in conformity with the rules and regulations promulgated by the said Department of Wildlife and Fisheries for Oyster Seed Bed Areas.

Applicant: MERLIN OIL & GAS, INC.

Bidder	Cash Payment	Price/ Acre	Rental	Oil	Gas	Other



TRACT 38819 - Portion of Blocks 5, and 6, North Lake Borgne Area, St. Bernard Parish, Louisiana

All of the lands now or formerly constituting the beds and bottoms of all water bodies of every nature and description the title of which vests in the State of Louisiana, together with all islands arising therein and other lands formed by accretion or by reliction, where allowed by law, excepting tax adjudicated lands, and not presently under mineral lease and cross hatched on January 10, 2007, situated in St. Bernard Parish, Louisiana, and more particularly described as follows: Beginning at a point having Coordinates of X = 2,562,670.00 and Y = 513,824.41 within the boundaries of Block LB0005; thence East 9,580.01 feet to a point on the East boundary of Block LB0005 having Coordinates of X = 2,572,250.01 and Y = 513,824.41; thence South 9,665.72 to a point on the Southeast corner of Block LB0006 having Coordinates of X = 2,572,250.00 and Y = 504,158.69; thence West 9,580.00 feet to a point on the South boundary of Block LB0006 having Coordinates of X = 2,562,670.00 and Y = 504,158.69; thence North 9,665.72 feet to the point of beginning, containing approximately **2,125.75 acres**, all as more particularly outlined on a plat on file in the Office of Mineral Resources, Department of Natural Resources. All bearings, distances and coordinates are based on Louisiana Coordinate System of 1927, (North or South Zone), where applicable.

NOTE: The above description of the Tract nominated for lease has been provided and corrected, where required, exclusively by the nomination party. Any mineral lease selected from this Tract and awarded by the Louisiana State Mineral Board shall be without warranty of any kind, either express, implied, or statutory, including, but not limited to, the implied warranties of merchantability and fitness for a particular purpose. Should the mineral lease awarded by the Louisiana State Mineral Board be subsequently modified, cancelled or abrogated due to the existence of conflicting leases, operating agreements, private claims or other future obligations or conditions which may affect all or any portion of the leased Tract, it shall not relieve the Lessee of the obligation to pay any bonus due thereon to the Louisiana State Mineral Board, nor shall the Louisiana State Mineral Board be obligated to refund any consideration paid by the Lessor prior to such modification, cancellation, or abrogation, including, but not limited to, bonuses, rentals and royalties.

NOTE: The Office of Mineral Resources will require a minimum bonus of \$230 per acre and a minimum royalty of 23%.

NOTE: The State of Louisiana does hereby reserve, and this lease shall be subject to, the imprescriptible right of surface use in the nature of a servitude in favor of the Department of Natural Resources, including its Offices and Commissions, for the sole purpose of implementing, constructing, servicing and maintaining approved coastal zone management and/or restoration projects. Utilization of any and all rights derived under this lease by the mineral lessee, its agents, successors or assigns, shall not interfere with nor hinder the reasonable surface use by the

Department of Natural Resources, its Offices or Commissions, as herein above reserved.

NOTE: The Department of Wildlife and Fisheries has designated certain areas in the coastal waters of the State of Louisiana as Oyster Seed Bed Areas. The exact location of those Seed Bed Areas must be obtained from the Department of Wildlife and Fisheries and any work done under a mineral lease from the State of Louisiana may necessarily be conducted in conformity with the rules and regulations promulgated by the said Department of Wildlife and Fisheries for Oyster Seed Bed Areas.

Applicant: MERLIN OIL & GAS, INC.

Bidder	Cash Payment	Price/ Acre	Rental	Oil	Gas	Other

