

TRACT 38059 - Portion of Blocks 80, and 81, Main Pass Area, Revised, Plaquemines Parish, Louisiana

All of the lands now or formerly constituting the beds and bottoms of all water bodies of every nature and description the title of which vests in the State of Louisiana, together with all islands arising therein and other lands formed by accretion or by reliction, where allowed by law, excepting tax adjudicated lands, and not presently under mineral lease on January 11, 2006, situated in Plaquemines Parish, Louisiana, and more particularly described as follows: Beginning at a point within Block 81, Main Pass Area, Revised, also being a point on the Southern boundary of State Lease No. 1357, as amended, having Coordinates of X = 2,719,640.00 and Y = 212,580.00; thence along the boundaries of said State Lease No. 1357 and State Lease No. 1355, as amended, the following: South 79 degrees 47 minutes 40 seconds East 7,224.30 feet and North 77 degrees 14 minutes 33 seconds East 2,526.47 feet to a point located within Block 80, having Coordinates of X = 2,729,214.10 and Y = 211,857.90; thence South 65 degrees 34 minutes 10 seconds West 361.78 feet to a point on the North boundary of Pass A Loutre Wildlife Management Area, having Coordinates of X = 2,729,543.48 and Y = 211,708.28; thence Southwesterly along an arc having a radius of 19,550.00 feet and a center at X = 2,731,935.94 and Y = 192,305.22 to a point on the East boundary of State Lease No. 18479, having Coordinates of X = 2,720,094.49 and Y = 207,861.01; thence along the East and North boundary of said State Lease No. 18479 the following; North 1,772.26 feet and West 5,286.38 feet to its Northwest corner having Coordinates of X = 2,714,808.11 and Y = 209,633.26; thence North 1.59 feet to a point on the Southern boundary of said State Lease No. 1357, having Coordinates of X = 2,714,808.11 and Y = 209,634.85; thence North 58 degrees 38 minutes 12 seconds East 5,658.72 feet along the Southern boundary of said State Lease No. 1357 to the point of beginning, containing approximately **527.40 acres**, all as more particularly outlined on a plat on file in the Office of Mineral Resources, Department of Natural Resources. All bearings, distances and coordinates are based on Louisiana Coordinate System of 1927, (North or South Zone), where applicable.

NOTE: The above description of the Tract nominated for lease has been provided and corrected, where required, exclusively by the nomination party. Any mineral lease selected from this Tract and awarded by the Louisiana State Mineral Board shall be without warranty of any kind, either express, implied, or statutory, including, but not limited to, the implied warranties of merchantability and fitness for a particular purpose. Should the mineral lease awarded by the Louisiana State Mineral Board be subsequently modified, cancelled or abrogated due to the existence of conflicting leases, operating agreements, private claims or other future obligations or conditions which may affect all or any portion of the leased Tract, it shall not relieve the Lessee of the obligation to pay any bonus due thereon to the Louisiana State Mineral Board, nor shall the Louisiana State Mineral Board be obligated to refund any consideration

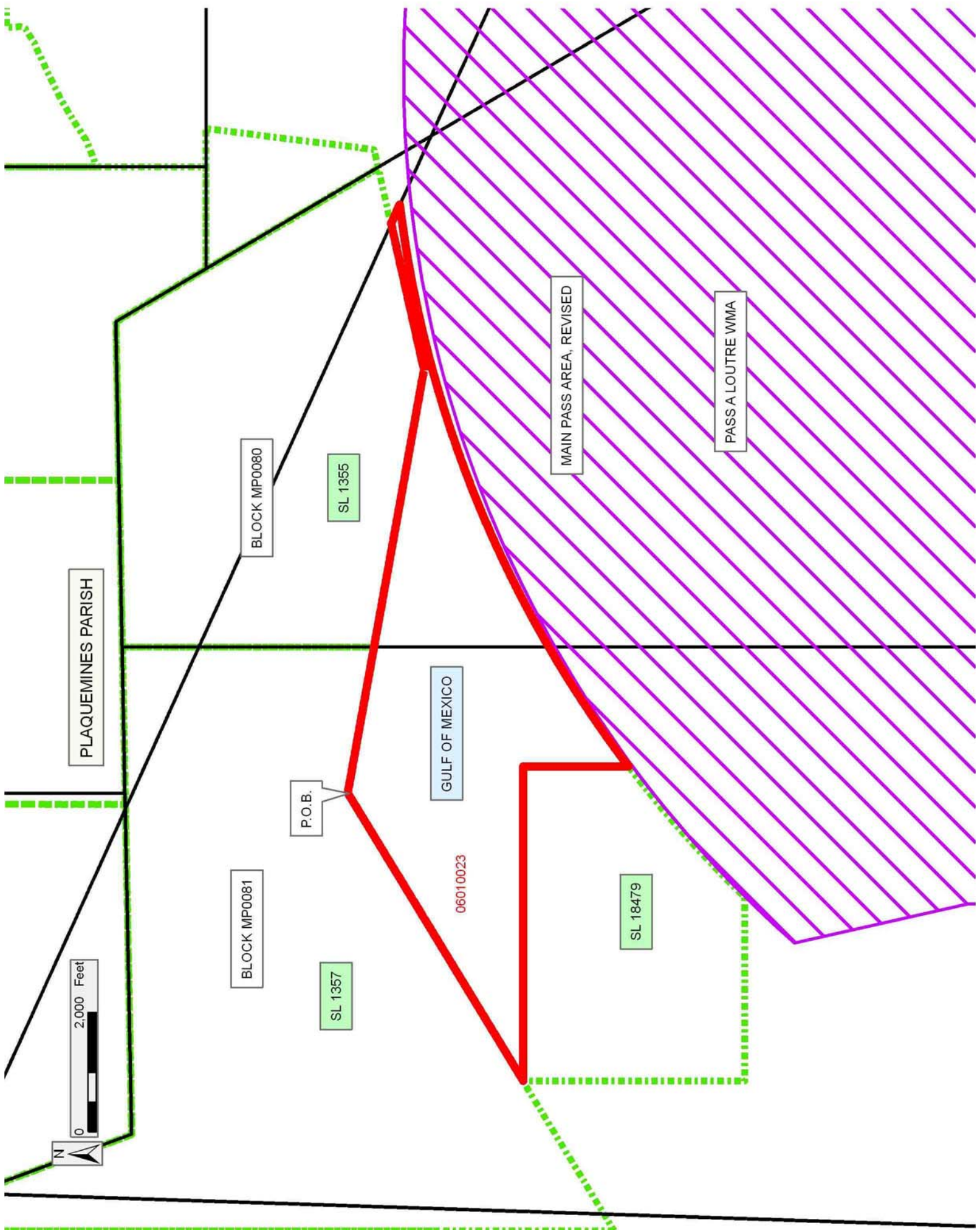
paid by the Lessor prior to such modification, cancellation, or abrogation, including, but not limited to, bonuses, rentals and royalties.

NOTE: The State of Louisiana does hereby reserve, and this lease shall be subject to, the imprescriptible right of surface use in the nature of a servitude in favor of the Department of Natural Resources, including its Offices and Commissions, for the sole purpose of implementing, constructing, servicing and maintaining approved coastal zone management and/or restoration projects. Utilization of any and all rights derived under this lease by the mineral lessee, its agents, successors or assigns, shall not interfere with nor hinder the reasonable surface use by the Department of Natural Resources, its Offices or Commissions, as herein above reserved.

NOTE: The Department of Wildlife and Fisheries has designated certain areas in the coastal waters of the State of Louisiana as Oyster Seed Bed Areas. The exact location of those Seed Bed Areas must be obtained from the Department of Wildlife and Fisheries and any work done under a mineral lease from the State of Louisiana may necessarily be conducted in conformity with the rules and regulations promulgated by the said Department of Wildlife and Fisheries for Oyster Seed Bed Areas.

Applicant: THEOPHILUS OIL GAS & LAND SERVICES LLC

Bidder	Cash Payment	Price/ Acre	Rental	Oil	Gas	Other



TRACT 38060 - Portion of Blocks 81, and 82, Main Pass Area, Revised, Plaquemines Parish, Louisiana

All of the lands now or formerly constituting the beds and bottoms of all water bodies of every nature and description the title of which vests in the State of Louisiana, together with all islands arising therein and other lands formed by accretion or by reliction, where allowed by law, excepting tax adjudicated lands, and not presently under mineral lease on January 11, 2006, situated in Plaquemines Parish, Louisiana, and more particularly described as follows: Beginning at a point within Block 82, Main Pass Area, Revised, having Coordinates of X = 2,705,236.94 and Y = 208,100.00; thence East 7,053.06 feet to the Southwest corner of State Lease No. 1357, as amended, having Coordinates of X = 2,712,290.00 and Y = 208,100.00; thence North 58 degrees 38 minutes 12 seconds East 2,949.01 feet along the Southern boundary of said State Lease No. 1357 to a point having Coordinates X = 2,714,808.11 and Y = 209,634.85; thence South 1.59 feet to the Northwest corner of State Lease No. 18479, having Coordinates of X = 2,714,808.11 and Y = 209,633.26; thence along the West and South boundary of said State Lease No. 18479 the following: South 3,724.42 feet and East 3,087.03 feet to a corner located on the Northerly boundary of the Pass A Loutre Wildlife Management Area, having Coordinates of X = 2,717,895.14 and Y = 205,908.84; thence along the boundary of said Pass A Loutre Wildlife Management Area the following: Southwesterly on an arc having a radius of 19,550.00 feet and a center at X = 2,731,935.94 and Y = 192,305.22 to a point having Coordinates of X = 2,717,128.07 and Y = 205,069.60, South 12 degrees 41 minutes 24 seconds East 2,972.05 feet, South 02 degrees 28 minutes 20 seconds East 3,054.14 feet and South 88 degrees 44 minutes 11 seconds West 11,630.90 feet to a point on the East boundary of State Lease No. 4977, as amended, having Coordinates of X = 2,706,284.63 and Y = 198,862.36; thence along the boundary of said State Lease No. 4977 the following: North 5,528.20 feet, West 998.54 feet and North 01 degrees 02 minutes 48 seconds West 2,690.18 feet to its most North Northeast corner having Coordinates of X = 2,705,236.94 and Y = 207,080.28; thence North 1,019.72 feet to the point of beginning, **LESS AND EXCEPT** all those portions of State Lease No. 335, as amended that may lie within the above described tract, containing approximately **2,215 acres**, all as more particularly outlined on a plat on file in the Office of Mineral Resources, Department of Natural Resources. All bearings, distances and coordinates are based on Louisiana Coordinate System of 1927, (North or South Zone), where applicable.

NOTE: The above description of the Tract nominated for lease has been provided and corrected, where required, exclusively by the nomination party. Any mineral lease selected from this Tract and awarded by the Louisiana State Mineral Board shall be without warranty of any kind, either express, implied, or statutory, including, but not limited to, the implied warranties of merchantability and fitness for a particular purpose. Should the mineral lease awarded by the Louisiana State Mineral Board be subsequently modified, cancelled or abrogated due to the existence of conflicting leases, operating agreements, private claims or

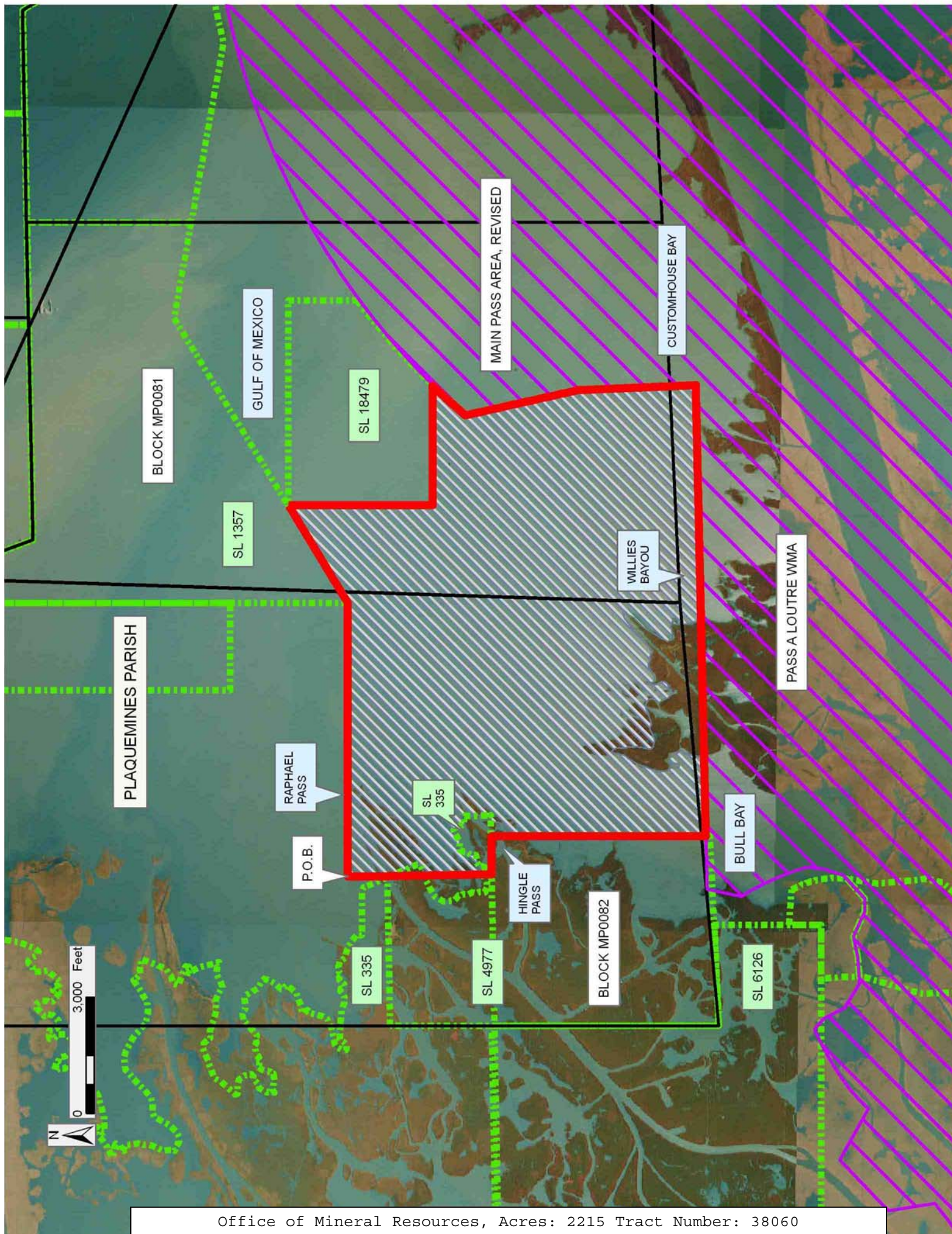
other future obligations or conditions which may affect all or any portion of the leased Tract, it shall not relieve the Lessee of the obligation to pay any bonus due thereon to the Louisiana State Mineral Board, nor shall the Louisiana State Mineral Board be obligated to refund any consideration paid by the Lessor prior to such modification, cancellation, or abrogation, including, but not limited to, bonuses, rentals and royalties.

NOTE: The State of Louisiana does hereby reserve, and this lease shall be subject to, the imprescriptible right of surface use in the nature of a servitude in favor of the Department of Natural Resources, including its Offices and Commissions, for the sole purpose of implementing, constructing, servicing and maintaining approved coastal zone management and/or restoration projects. Utilization of any and all rights derived under this lease by the mineral lessee, its agents, successors or assigns, shall not interfere with nor hinder the reasonable surface use by the Department of Natural Resources, its Offices or Commissions, as herein above reserved.

NOTE: The Department of Wildlife and Fisheries has designated certain areas in the coastal waters of the State of Louisiana as Oyster Seed Bed Areas. The exact location of those Seed Bed Areas must be obtained from the Department of Wildlife and Fisheries and any work done under a mineral lease from the State of Louisiana may necessarily be conducted in conformity with the rules and regulations promulgated by the said Department of Wildlife and Fisheries for Oyster Seed Bed Areas.

Applicant: THEOPHILUS OIL GAS & LAND SERVICES LLC

Bidder	Cash Payment	Price/ Acre	Rental	Oil	Gas	Other



TRACT 38061 - Plaquemines Parish, Louisiana

All of the lands now or formerly constituting the beds and bottoms of all water bodies of every nature and description the title of which vests in the State of Louisiana, together with all islands arising therein and other lands formed by accretion or by reliction, where allowed by law, excepting tax adjudicated lands, and not presently under mineral lease on January 11, 2006, situated in Plaquemines Parish, Louisiana, and more particularly described as follows: Beginning at a point having Coordinates of X = 2,636,305.90 and Y = 210,002.10; thence East 10,560.00 feet to a point having Coordinates of X = 2,646,865.90 and Y = 210,002.10; thence South 10,560.00 feet to a point having Coordinates of X = 2,646,865.90 and Y = 199,442.10; thence West 8,460.00 feet to a point having Coordinates of X = 2,638,405.90 and Y = 199,442.10; thence North 5,280.00 feet to a point having Coordinates of X = 2,638,405.90 and Y = 204,722.10; thence West 2,100.00 feet to a point having Coordinates of X = 2,636,305.90 and Y = 204,722.10; thence North 5,280.00 feet to the point of beginning, containing approximately **1,500 acres**, all as more particularly outlined on a plat on file in the Office of Mineral Resources, Department of Natural Resources. All bearings, distances and coordinates are based on Louisiana Coordinate System of 1927, (North or South Zone), where applicable.

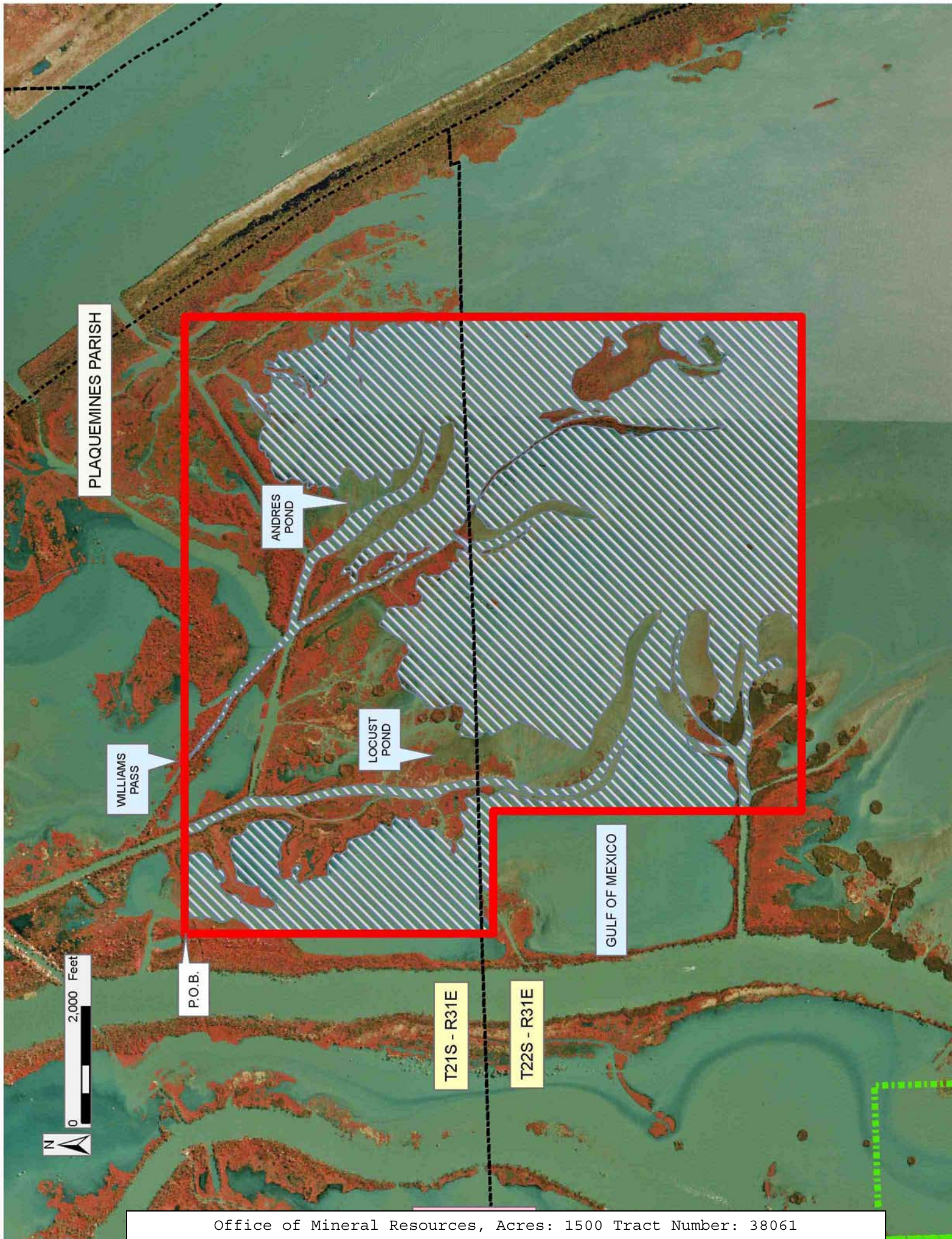
NOTE: The above description of the Tract nominated for lease has been provided and corrected, where required, exclusively by the nomination party. Any mineral lease selected from this Tract and awarded by the Louisiana State Mineral Board shall be without warranty of any kind, either express, implied, or statutory, including, but not limited to, the implied warranties of merchantability and fitness for a particular purpose. Should the mineral lease awarded by the Louisiana State Mineral Board be subsequently modified, cancelled or abrogated due to the existence of conflicting leases, operating agreements, private claims or other future obligations or conditions which may affect all or any portion of the leased Tract, it shall not relieve the Lessee of the obligation to pay any bonus due thereon to the Louisiana State Mineral Board, nor shall the Louisiana State Mineral Board be obligated to refund any consideration paid by the Lessor prior to such modification, cancellation, or abrogation, including, but not limited to, bonuses, rentals and royalties.

NOTE: The State of Louisiana does hereby reserve, and this lease shall be subject to, the imprescriptible right of surface use in the nature of a servitude in favor of the Department of Natural Resources, including its Offices and Commissions, for the sole purpose of implementing, constructing, servicing and maintaining approved coastal zone management and/or restoration projects. Utilization of any and all rights derived under this lease by the mineral lessee, its agents, successors or assigns, shall not interfere with nor hinder the reasonable surface use by the Department of Natural Resources, its Offices or Commissions, as herein above reserved.

NOTE: The Department of Wildlife and Fisheries has designated certain areas in the coastal waters of the State of Louisiana as Oyster Seed Bed Areas. The exact location of those Seed Bed Areas must be obtained from the Department of Wildlife and Fisheries and any work done under a mineral lease from the State of Louisiana may necessarily be conducted in conformity with the rules and regulations promulgated by the said Department of Wildlife and Fisheries for Oyster Seed Bed Areas.

Applicant: THEOPHILUS OIL GAS & LAND SERVICES LLC

Bidder	Cash Payment	Price/ Acre	Rental	Oil	Gas	Other



TRACT 38062 - Plaquemines Parish, Louisiana

All of the lands now or formerly constituting the beds and bottoms of all water bodies of every nature and description the title of which vests in the State of Louisiana, together with all islands arising therein and other lands formed by accretion or by reliction, where allowed by law, excepting tax adjudicated lands, and not presently under mineral lease on January 11, 2006, situated in Plaquemines Parish, Louisiana, and more particularly described as follows: Beginning at a point having Coordinates of X = 2,646,865.90 and Y = 210,002.10; thence East 400.00 feet to a point having Coordinates of X = 2,647,265.90 and Y = 210,002.10; thence South 26 degrees 27 minutes 23 seconds East 11,795.28 feet to a point having Coordinates of X = 2,652,520.90 and Y = 199,442.10; thence West 5,655.00 feet to a point having Coordinates of X = 2,646,865.90 and Y = 199,442.10; thence North 10,560.00 feet to the point of beginning, containing approximately **595 acres**, all as more particularly outlined on a plat on file in the Office of Mineral Resources, Department of Natural Resources. All bearings, distances and coordinates are based on Louisiana Coordinate System of 1927, (North or South Zone), where applicable.

NOTE: The above description of the Tract nominated for lease has been provided and corrected, where required, exclusively by the nomination party. Any mineral lease selected from this Tract and awarded by the Louisiana State Mineral Board shall be without warranty of any kind, either express, implied, or statutory, including, but not limited to, the implied warranties of merchantability and fitness for a particular purpose. Should the mineral lease awarded by the Louisiana State Mineral Board be subsequently modified, cancelled or abrogated due to the existence of conflicting leases, operating agreements, private claims or other future obligations or conditions which may affect all or any portion of the leased Tract, it shall not relieve the Lessee of the obligation to pay any bonus due thereon to the Louisiana State Mineral Board, nor shall the Louisiana State Mineral Board be obligated to refund any consideration paid by the Lessor prior to such modification, cancellation, or abrogation, including, but not limited to, bonuses, rentals and royalties.

NOTE: The State of Louisiana does hereby reserve, and this lease shall be subject to, the imprescriptible right of surface use in the nature of a servitude in favor of the Department of Natural Resources, including its Offices and Commissions, for the sole purpose of implementing, constructing, servicing and maintaining approved coastal zone management and/or restoration projects. Utilization of any and all rights derived under this lease by the mineral lessee, its agents, successors or assigns, shall not interfere with nor hinder the reasonable surface use by the Department of Natural Resources, its Offices or Commissions, as herein above reserved.

NOTE: The Department of Wildlife and Fisheries has designated certain areas in the coastal waters of the State of Louisiana as Oyster Seed Bed Areas. The exact location of those Seed Bed Areas must be obtained from

the Department of Wildlife and Fisheries and any work done under a mineral lease from the State of Louisiana may necessarily be conducted in conformity with the rules and regulations promulgated by the said Department of Wildlife and Fisheries for Oyster Seed Bed Areas.

Applicant: THEOPHILUS OIL GAS & LAND SERVICES LLC

Bidder	Cash Payment	Price/ Acre	Rental	Oil	Gas	Other



PLAQUEMINES PARISH

P.O.B.

GULF OF MEXICO

T21S - R31E

T22S - R31E



TRACT 38063 - Plaquemines Parish, Louisiana

All of the lands now or formerly constituting the beds and bottoms of all water bodies of every nature and description the title of which vests in the State of Louisiana, together with all islands arising therein and other lands formed by accretion or by reliction, where allowed by law, excepting tax adjudicated lands, and not presently under mineral lease on January 11, 2006, situated in Plaquemines Parish, Louisiana, and more particularly described as follows: Beginning at a point having Coordinates of X = 2,631,025.90 and Y = 204,722.10; thence East 7,380.00 feet to a point having Coordinates of X = 2,638,405.90 and Y = 204,722.10; thence South 7,920.00 feet to a point having Coordinates of X = 2,638,405.90 and Y = 196,802.10; thence West 4,659.78 feet to a point on the East boundary of State Lease No. 17382, having Coordinates of X = 2,633,746.12 and Y = 196,802.10; thence along the East and North boundary of said State Lease No. 17382 the following: North 01 degrees 42 minutes 53 seconds West 1,400.22 feet and South 88 degrees 17 minutes 07 seconds West 2,640.00 feet to its Northwest corner located on the East boundary of State Lease No. 15918, as amended, having Coordinates of X = 2,631,065.40 and Y = 198,122.69; thence North 01 degrees 42 minutes 53 seconds West 1,320.00 feet along the East boundary of said State Lease No. 15918 to its Northeast corner, having Coordinates of X = 2,631,025.90 and Y = 199,442.10, thence North 5,280.00 feet to the point of beginning, containing approximately **965 acres**, all as more particularly outlined on a plat on file in the Office of Mineral Resources, Department of Natural Resources. All bearings, distances and coordinates are based on Louisiana Coordinate System of 1927, (North or South Zone), where applicable.

NOTE: The above description of the Tract nominated for lease has been provided and corrected, where required, exclusively by the nomination party. Any mineral lease selected from this Tract and awarded by the Louisiana State Mineral Board shall be without warranty of any kind, either express, implied, or statutory, including, but not limited to, the implied warranties of merchantability and fitness for a particular purpose. Should the mineral lease awarded by the Louisiana State Mineral Board be subsequently modified, cancelled or abrogated due to the existence of conflicting leases, operating agreements, private claims or other future obligations or conditions which may affect all or any portion of the leased Tract, it shall not relieve the Lessee of the obligation to pay any bonus due thereon to the Louisiana State Mineral Board, nor shall the Louisiana State Mineral Board be obligated to refund any consideration paid by the Lessor prior to such modification, cancellation, or abrogation, including, but not limited to, bonuses, rentals and royalties.

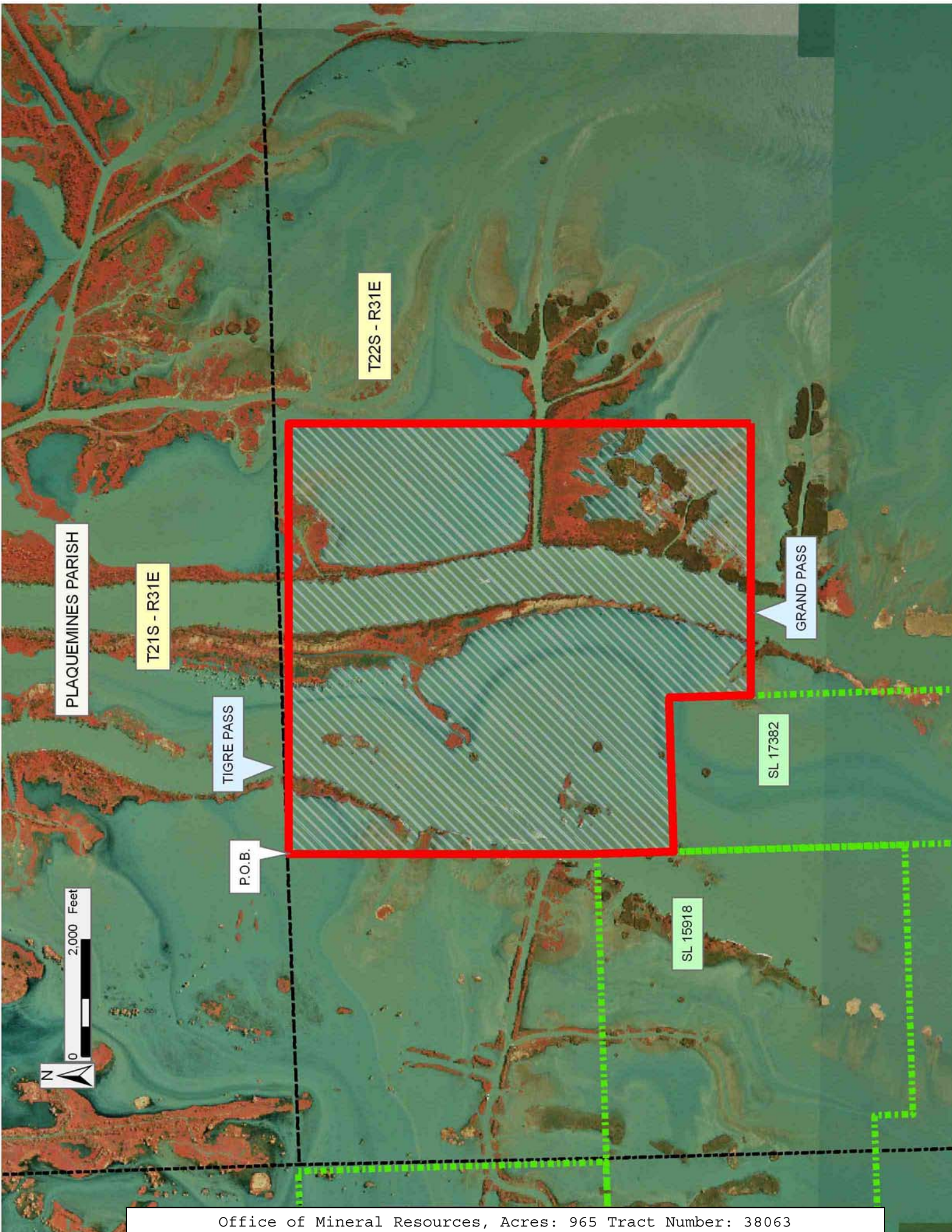
NOTE: The State of Louisiana does hereby reserve, and this lease shall be subject to, the imprescriptible right of surface use in the nature of a servitude in favor of the Department of Natural Resources, including its Offices and Commissions, for the sole purpose of implementing, constructing, servicing and maintaining approved coastal zone management and/or restoration projects. Utilization of any and all rights derived

under this lease by the mineral lessee, its agents, successors or assigns, shall not interfere with nor hinder the reasonable surface use by the Department of Natural Resources, its Offices or Commissions, as herein above reserved.

NOTE: The Department of Wildlife and Fisheries has designated certain areas in the coastal waters of the State of Louisiana as Oyster Seed Bed Areas. The exact location of those Seed Bed Areas must be obtained from the Department of Wildlife and Fisheries and any work done under a mineral lease from the State of Louisiana may necessarily be conducted in conformity with the rules and regulations promulgated by the said Department of Wildlife and Fisheries for Oyster Seed Bed Areas.

Applicant: THEOPHILUS OIL GAS & LAND SERVICES LLC

Bidder	Cash Payment	Price/ Acre	Rental	Oil	Gas	Other



T22S - R31E

PLAQUEMINES PARISH

T21S - R31E

TIGRE PASS

P.O.B.

GRAND PASS

SL 17382

SL 15918

2,000 Feet

TRACT 38064 - Plaquemines Parish, Louisiana

All of the lands now or formerly constituting the beds and bottoms of all water bodies of every nature and description the title of which vests in the State of Louisiana, together with all islands arising therein and other lands formed by accretion or by reliction, where allowed by law, excepting tax adjudicated lands, and not presently under mineral lease on January 11, 2006, situated in Plaquemines Parish, Louisiana, and more particularly described as follows: Beginning at a point having Coordinates of X = 2,646,865.90 and Y = 199,442.10; thence East 5,655.00 feet to a point having Coordinates of X = 2,652,520.90 and Y = 199,442.10; thence South 26 degrees 27 minutes 23 seconds East 11,795.28 feet to a point having Coordinates of X = 2,657,775.90 and Y = 188,882.10; thence West 10,910.00 feet to a point having Coordinates of X = 2,646,865.90 and Y = 188,882.10; thence North 10,560.00 feet to the point of beginning, containing approximately **1,945 acres**, all as more particularly outlined on a plat on file in the Office of Mineral Resources, Department of Natural Resources. All bearings, distances and coordinates are based on Louisiana Coordinate System of 1927, (North or South Zone), where applicable.

NOTE: The above description of the Tract nominated for lease has been provided and corrected, where required, exclusively by the nomination party. Any mineral lease selected from this Tract and awarded by the Louisiana State Mineral Board shall be without warranty of any kind, either express, implied, or statutory, including, but not limited to, the implied warranties of merchantability and fitness for a particular purpose. Should the mineral lease awarded by the Louisiana State Mineral Board be subsequently modified, cancelled or abrogated due to the existence of conflicting leases, operating agreements, private claims or other future obligations or conditions which may affect all or any portion of the leased Tract, it shall not relieve the Lessee of the obligation to pay any bonus due thereon to the Louisiana State Mineral Board, nor shall the Louisiana State Mineral Board be obligated to refund any consideration paid by the Lessor prior to such modification, cancellation, or abrogation, including, but not limited to, bonuses, rentals and royalties.

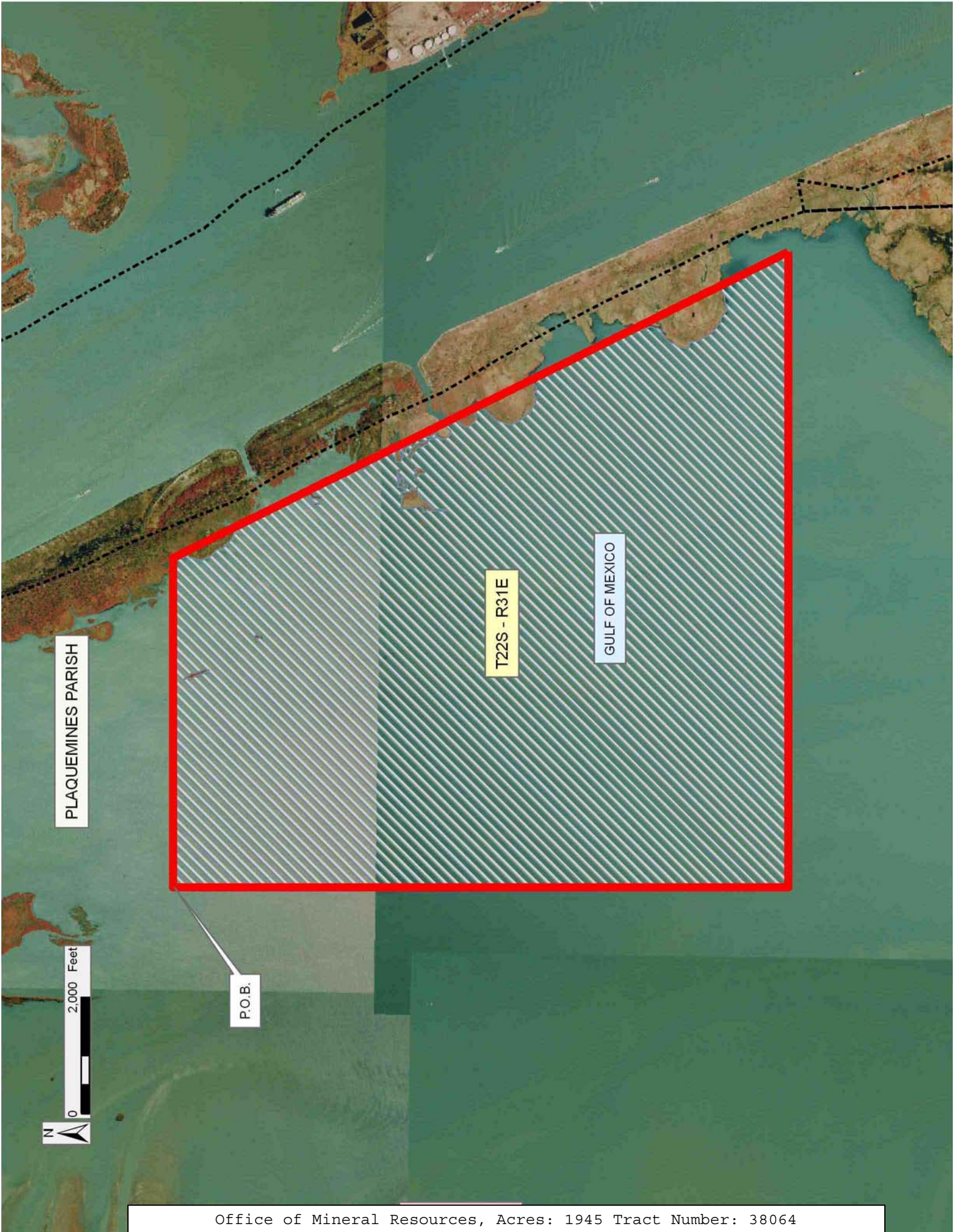
NOTE: The State of Louisiana does hereby reserve, and this lease shall be subject to, the imprescriptible right of surface use in the nature of a servitude in favor of the Department of Natural Resources, including its Offices and Commissions, for the sole purpose of implementing, constructing, servicing and maintaining approved coastal zone management and/or restoration projects. Utilization of any and all rights derived under this lease by the mineral lessee, its agents, successors or assigns, shall not interfere with nor hinder the reasonable surface use by the Department of Natural Resources, its Offices or Commissions, as herein above reserved.

NOTE: The Department of Wildlife and Fisheries has designated certain areas in the coastal waters of the State of Louisiana as Oyster Seed Bed Areas. The exact location of those Seed Bed Areas must be obtained from

the Department of Wildlife and Fisheries and any work done under a mineral lease from the State of Louisiana may necessarily be conducted in conformity with the rules and regulations promulgated by the said Department of Wildlife and Fisheries for Oyster Seed Bed Areas.

Applicant: THEOPHILUS OIL GAS & LAND SERVICES LLC

Bidder	Cash Payment	Price/ Acre	Rental	Oil	Gas	Other



TRACT 38065 - Plaquemines Parish, Louisiana

All of the lands now or formerly constituting the beds and bottoms of all water bodies of every nature and description the title of which vests in the State of Louisiana, together with all islands arising therein and other lands formed by accretion or by reliction, where allowed by law, excepting tax adjudicated lands, and not presently under mineral lease on January 11, 2006, situated in Plaquemines Parish, Louisiana, and more particularly described as follows: Beginning at a point having Coordinates of X = 2,638,405.90 and Y = 199,442.10; thence East 8,460.00 feet to a point having Coordinates of X = 2,646,865.90 and Y = 199,442.10; thence South 10,560.00 feet to a point having Coordinates of X = 2,646,865.90 and Y = 188,882.10; thence West 8,460.00 feet to a point having Coordinates of X = 2,638,405.90 and Y = 188,882.10; thence North 10,560.00 feet to the point of beginning, containing approximately **2,047 acres**, all as more particularly outlined on a plat on file in the Office of Mineral Resources, Department of Natural Resources. All bearings, distances and coordinates are based on Louisiana Coordinate System of 1927, (North or South Zone), where applicable.

NOTE: The above description of the Tract nominated for lease has been provided and corrected, where required, exclusively by the nomination party. Any mineral lease selected from this Tract and awarded by the Louisiana State Mineral Board shall be without warranty of any kind, either express, implied, or statutory, including, but not limited to, the implied warranties of merchantability and fitness for a particular purpose. Should the mineral lease awarded by the Louisiana State Mineral Board be subsequently modified, cancelled or abrogated due to the existence of conflicting leases, operating agreements, private claims or other future obligations or conditions which may affect all or any portion of the leased Tract, it shall not relieve the Lessee of the obligation to pay any bonus due thereon to the Louisiana State Mineral Board, nor shall the Louisiana State Mineral Board be obligated to refund any consideration paid by the Lessor prior to such modification, cancellation, or abrogation, including, but not limited to, bonuses, rentals and royalties.

NOTE: The State of Louisiana does hereby reserve, and this lease shall be subject to, the imprescriptible right of surface use in the nature of a servitude in favor of the Department of Natural Resources, including its Offices and Commissions, for the sole purpose of implementing, constructing, servicing and maintaining approved coastal zone management and/or restoration projects. Utilization of any and all rights derived under this lease by the mineral lessee, its agents, successors or assigns, shall not interfere with nor hinder the reasonable surface use by the Department of Natural Resources, its Offices or Commissions, as herein above reserved.

NOTE: The Department of Wildlife and Fisheries has designated certain areas in the coastal waters of the State of Louisiana as Oyster Seed Bed Areas. The exact location of those Seed Bed Areas must be obtained from

the Department of Wildlife and Fisheries and any work done under a mineral lease from the State of Louisiana may necessarily be conducted in conformity with the rules and regulations promulgated by the said Department of Wildlife and Fisheries for Oyster Seed Bed Areas.

Applicant: THEOPHILUS OIL GAS & LAND SERVICES LLC

Bidder	Cash Payment	Price/ Acre	Rental	Oil	Gas	Other

PLAQUEMINES PARISH

GULF OF MEXICO

T22S - R31E

P.O.B.

0 2,000 Feet



TRACT 38066 - Plaquemines Parish, Louisiana

All of the lands now or formerly constituting the beds and bottoms of all water bodies of every nature and description the title of which vests in the State of Louisiana, together with all islands arising therein and other lands formed by accretion or by reliction, where allowed by law, excepting tax adjudicated lands, and not presently under mineral lease on January 11, 2006, situated in Plaquemines Parish, Louisiana, and more particularly described as follows: Beginning at a point on the East boundary of State Lease No. 17382, having Coordinates of X = 2,633,746.12 and Y = 196,802.10; thence East 4,659.78 feet to a point having Coordinates of X = 2,638,405.90 and Y = 196,802.10; thence South 7,920.00 feet to a point having Coordinates of X = 2,638,405.90 and Y = 188,882.10; thence West 9,863.18 feet to a point having Coordinates of X = 2,628,542.72 and Y = 188,882.10; thence North 5,201.97 feet to a point on the South boundary of State Lease No. 15918, as amended, having Coordinates of X = 2,628,542.72 and Y = 194,084.07; thence North 88 degrees 16 minutes 10 seconds East 2,642.40 feet along the South boundary of said State Lease No. 15918 to its Southeast corner located on the West boundary of said State Lease No. 17382, having Coordinates of X = 2,631,183.91 and Y = 194,163.87; thence along the West, South and East boundary of said State Lease No. 17382 the following: South 01 degrees 42 minutes 53 seconds East 1,319.40 feet, North 88 degrees 17 minutes 08 seconds East 2,640.00 feet and North 01 degrees 42 minutes 53 seconds West 3,879.79 feet to the point of beginning, containing approximately **1,240 acres**, all as more particularly outlined on a plat on file in the Office of Mineral Resources, Department of Natural Resources. All bearings, distances and coordinates are based on Louisiana Coordinate System of 1927, (North or South Zone), where applicable.

NOTE: The above description of the Tract nominated for lease has been provided and corrected, where required, exclusively by the nomination party. Any mineral lease selected from this Tract and awarded by the Louisiana State Mineral Board shall be without warranty of any kind, either express, implied, or statutory, including, but not limited to, the implied warranties of merchantability and fitness for a particular purpose. Should the mineral lease awarded by the Louisiana State Mineral Board be subsequently modified, cancelled or abrogated due to the existence of conflicting leases, operating agreements, private claims or other future obligations or conditions which may affect all or any portion of the leased Tract, it shall not relieve the Lessee of the obligation to pay any bonus due thereon to the Louisiana State Mineral Board, nor shall the Louisiana State Mineral Board be obligated to refund any consideration paid by the Lessor prior to such modification, cancellation, or abrogation, including, but not limited to, bonuses, rentals and royalties.

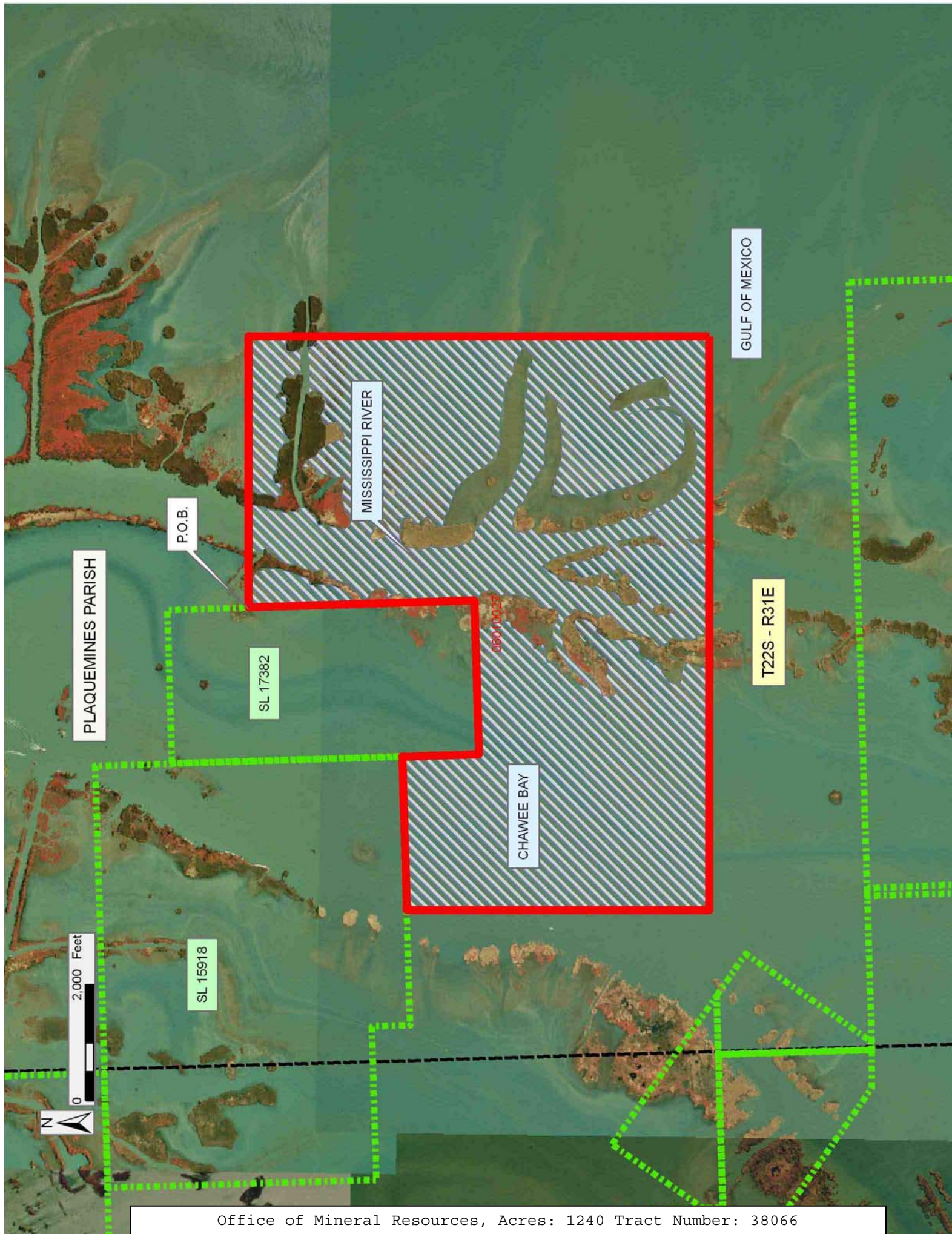
NOTE: The State of Louisiana does hereby reserve, and this lease shall be subject to, the imprescriptible right of surface use in the nature of a servitude in favor of the Department of Natural Resources, including its Offices and Commissions, for the sole purpose of implementing,

constructing, servicing and maintaining approved coastal zone management and/or restoration projects. Utilization of any and all rights derived under this lease by the mineral lessee, its agents, successors or assigns, shall not interfere with nor hinder the reasonable surface use by the Department of Natural Resources, its Offices or Commissions, as herein above reserved.

NOTE: The Department of Wildlife and Fisheries has designated certain areas in the coastal waters of the State of Louisiana as Oyster Seed Bed Areas. The exact location of those Seed Bed Areas must be obtained from the Department of Wildlife and Fisheries and any work done under a mineral lease from the State of Louisiana may necessarily be conducted in conformity with the rules and regulations promulgated by the said Department of Wildlife and Fisheries for Oyster Seed Bed Areas.

Applicant: THEOPHILUS OIL GAS & LAND SERVICES LLC

Bidder	Cash Payment	Price/ Acre	Rental	Oil	Gas	Other



TRACT 38067 - Lafourche Parish, Louisiana

All of the lands now or formerly constituting the beds and bottoms of all water bodies of every nature and description the title of which vests in the State of Louisiana, together with all islands arising therein and other lands formed by accretion or by reliction, where allowed by law, excepting tax adjudicated lands, and not presently under mineral lease on January 11, 2006, situated in Lafourche Parish, Louisiana, and more particularly described as follows: Beginning at a point located on the West boundary line of State Lease No. 1772, as amended, having Coordinates of X = 2,313,615.39 and Y = 147,467.19; thence along the boundary of said State Lease No. 1772 the following courses: South 3,401.19 feet to a point having Coordinates of X = 2,313,615.39 and Y = 144,066.00, East 2,205.00 feet to a point having Coordinates of X = 2,315,820.39 and Y = 144,066.00, South 00 degrees 04 minutes 08 seconds East 1,364.00 feet to point having Coordinates of X = 2,315,822.03 and Y = 142,702.00 and South 89 degrees 58 minutes 33 seconds East 1,213.47 feet to a point on the South boundary of said State Lease No. 1772 having Coordinates of X = 2,317,035.50 and Y = 142,701.49, said point also being a point on the Coastline derived from the June 16, 1975 Decree in the United States vs. Louisiana No. 9 Original; thence along the said coast line for the following: Southwesterly on a straight line to a point having Coordinates of X = 2,313,902 and Y = 141,865, Southwesterly on a straight line to a point having Coordinates of X = 2,312,204 and Y = 141,813, Northwesterly on a straight line to a point having Coordinates of X = 2,310,546 and Y = 141,903, Northwesterly on a straight line to a point having Coordinates of X = 2,308,552 and Y = 142,401, Northwesterly on a straight line to a point having Coordinates of X = 2,307,414 and Y = 143,059, Northwesterly on a straight line to a point having Coordinates X = 2,306,697 and Y = 143,789, Southwesterly on a straight line to a point having Coordinates X = 2,300,326 and Y = 139,954, Southwesterly on a straight line to a point having Coordinates of X = 2,298,538 and Y = 139,073, Southwesterly on a straight line to a point having Coordinates of X = 2,296,041 and Y = 138,519, and Northwesterly on a straight line to a point having Coordinates of X = 2,295,243.02 and Y = 138,546.58; thence North 00 degrees 27 minutes 09 seconds West 6,200.71 feet to a point on the Southern boundary of State Lease No. 2826 having Coordinates of X = 2,295,194.06 and Y = 144,747.10; thence along the Southern and Eastern boundary of said State Lease No. 2826 the following: North 89 degrees 30 minutes 40 seconds East 3,952.06 feet to a point having Coordinates of X = 2,299,145.97 and Y = 144,780.82, North 00 degrees 29 minutes 20 seconds West 2,650.00 feet to a point having Coordinates of X = 2,299,123.36 and Y = 147,430.72 and North 89 degrees 30 minutes 40 seconds East 4,100.00 feet to a point having Coordinates of X = 2,303,223.21 and Y = 147,465.70; thence North 89 degrees 59 minutes 30 seconds 10,392.19 East to the point of beginning, **LESS AND EXCEPT** those portion of State Lease No. 1772 and State Lease No. 2826 that may lie within the above described tract, containing approximately **2,500.00 acres**, all as more particularly outlined on a plat on file in the Office of Mineral Resources, Department of Natural Resources. All bearings, distances and coordinates are based on

Louisiana Coordinate System of 1927, (North or South Zone), where applicable.

NOTE: The above description of the Tract nominated for lease has been provided and corrected, where required, exclusively by the nomination party. Any mineral lease selected from this Tract and awarded by the Louisiana State Mineral Board shall be without warranty of any kind, either express, implied, or statutory, including, but not limited to, the implied warranties of merchantability and fitness for a particular purpose. Should the mineral lease awarded by the Louisiana State Mineral Board be subsequently modified, cancelled or abrogated due to the existence of conflicting leases, operating agreements, private claims or other future obligations or conditions which may affect all or any portion of the leased Tract, it shall not relieve the Lessee of the obligation to pay any bonus due thereon to the Louisiana State Mineral Board, nor shall the Louisiana State Mineral Board be obligated to refund any consideration paid by the Lessor prior to such modification, cancellation, or abrogation, including, but not limited to, bonuses, rentals and royalties.

NOTE: The State of Louisiana does hereby reserve, and this lease shall be subject to, the imprescriptible right of surface use in the nature of a servitude in favor of the Department of Natural Resources, including its Offices and Commissions, for the sole purpose of implementing, constructing, servicing and maintaining approved coastal zone management and/or restoration projects. Utilization of any and all rights derived under this lease by the mineral lessee, its agents, successors or assigns, shall not interfere with nor hinder the reasonable surface use by the Department of Natural Resources, its Offices or Commissions, as herein above reserved.

NOTE: The Department of Wildlife and Fisheries has designated certain areas in the coastal waters of the State of Louisiana as Oyster Seed Bed Areas. The exact location of those Seed Bed Areas must be obtained from the Department of Wildlife and Fisheries and any work done under a mineral lease from the State of Louisiana may necessarily be conducted in conformity with the rules and regulations promulgated by the said Department of Wildlife and Fisheries for Oyster Seed Bed Areas.

Bidder	Cash Payment	Price/ Acre	Rental	Oil	Gas	Other

Applicant: ACADIAN LAND SERVICES, L.L.C.

