

**TRACT 38029 - Bossier and Webster Parishes, Louisiana**

All of the lands now or formerly constituting the beds and bottoms of all water bodies of every nature and description the title of which vests in the State of Louisiana, together with all islands arising therein and other lands formed by accretion or by reliction, where allowed by law, excepting tax adjudicated lands, and not presently under mineral lease on January 11, 2006, situated in Bossier and Webster Parishes, Louisiana, and more particularly described as follows: Beginning at a point having Coordinates of X = 1,704,647.10 and Y = 805,716.19; thence North 89 degrees 52 minutes 20 seconds East 5,330.76 feet to a point having Coordinates of X = 1,709,977.85 and Y = 805,728.08; thence South 00 degrees 07 minutes 21 seconds East 10,689.12 feet to a point having Coordinates of X = 1,710,000.71 and Y = 795,038.98; thence North 89 degrees 10 minutes 05 seconds West 5,303.71 feet to a point having Coordinates of X = 1,704,697.56 and Y = 795,115.98; thence North 00 degrees 16 minutes 22 seconds West 10,600.33 feet to the point of beginning, containing approximately **41 acres**, all as more particularly outlined on a plat on file in the Office of Mineral Resources, Department of Natural Resources. All bearings, distances and coordinates are based on Louisiana Coordinate System of 1927, (North or South Zone), where applicable.

NOTE: The above description of the Tract nominated for lease has been provided and corrected, where required, exclusively by the nomination party. Any mineral lease selected from this Tract and awarded by the Louisiana State Mineral Board shall be without warranty of any kind, either express, implied, or statutory, including, but not limited to, the implied warranties of merchantability and fitness for a particular purpose. Should the mineral lease awarded by the Louisiana State Mineral Board be subsequently modified, cancelled or abrogated due to the existence of conflicting leases, operating agreements, private claims or other future obligations or conditions which may affect all or any portion of the leased Tract, it shall not relieve the Lessee of the obligation to pay any bonus due thereon to the Louisiana State Mineral Board, nor shall the Louisiana State Mineral Board be obligated to refund any consideration paid by the Lessor prior to such modification, cancellation, or abrogation, including, but not limited to, bonuses, rentals and royalties.

NOTE: This tract is located within the boundaries of a wildlife management area or refuge and any operations conducted thereon in conjunction with this mineral lease may be subject to rules and regulations promulgated by the Department of Wildlife and Fisheries for the protection of fish, birds and other wildlife including, but not necessarily limited to, the following:

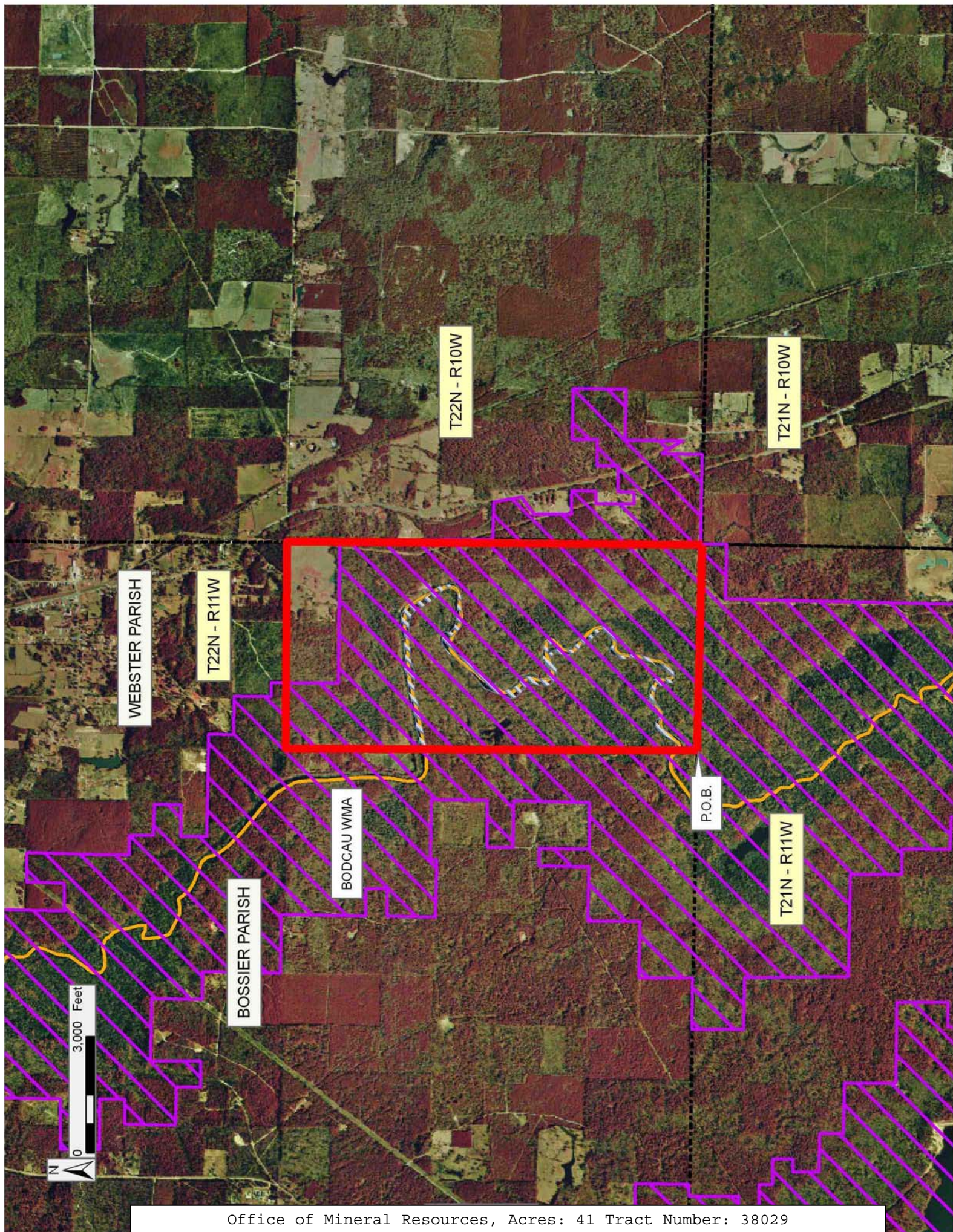
1. No activities will be allowed without written authorization from the Louisiana Department of Wildlife and Fisheries. All projects will be coordinated and approved by the appropriate WMA Supervisor prior to any activities on the wildlife management area.

2. Proposed projects will be evaluated on a case by case basis. Modifications to proposed projects may be required including, but not limited to, access routes, spoil placement, well sites, flow lines and other appurtenant structures required by the Louisiana Department of Wildlife and Fisheries.
3. Compensatory mitigation will be required to offset unavoidable wetland impacts.
4. Removal of all structures, facilities, and equipment will be required within 120 days of abandonment unless otherwise agreed to by the Department of Wildlife and Fisheries.
5. No activities will be allowed during the hunting season unless approved by the Department.
6. Compliance with the said WMA regulations will be required unless otherwise specified by the Department.
7. Prior to submitting applications for wetland permits to Federal and State permitting agencies the lease holder shall coordinate project details with the Louisiana Department of Wildlife and Fisheries, Fur and Refuge Division. Contact person for the Department will be Mike Windham at (504) 568-5886.

Applicant: THEOPHILUS OIL GAS & LAND SERVICES LLC

Bidder	Cash Payment	Price/Acre	Rental	Oil	Gas	Other





WEBSTER PARISH

T22N - R11W

T22N - R10W

T21N - R10W

BODCAU WMA

BOSSIER PARISH

P.O.B.

T21N - R11W





**TRACT 38030 - Red River Parish, Louisiana**

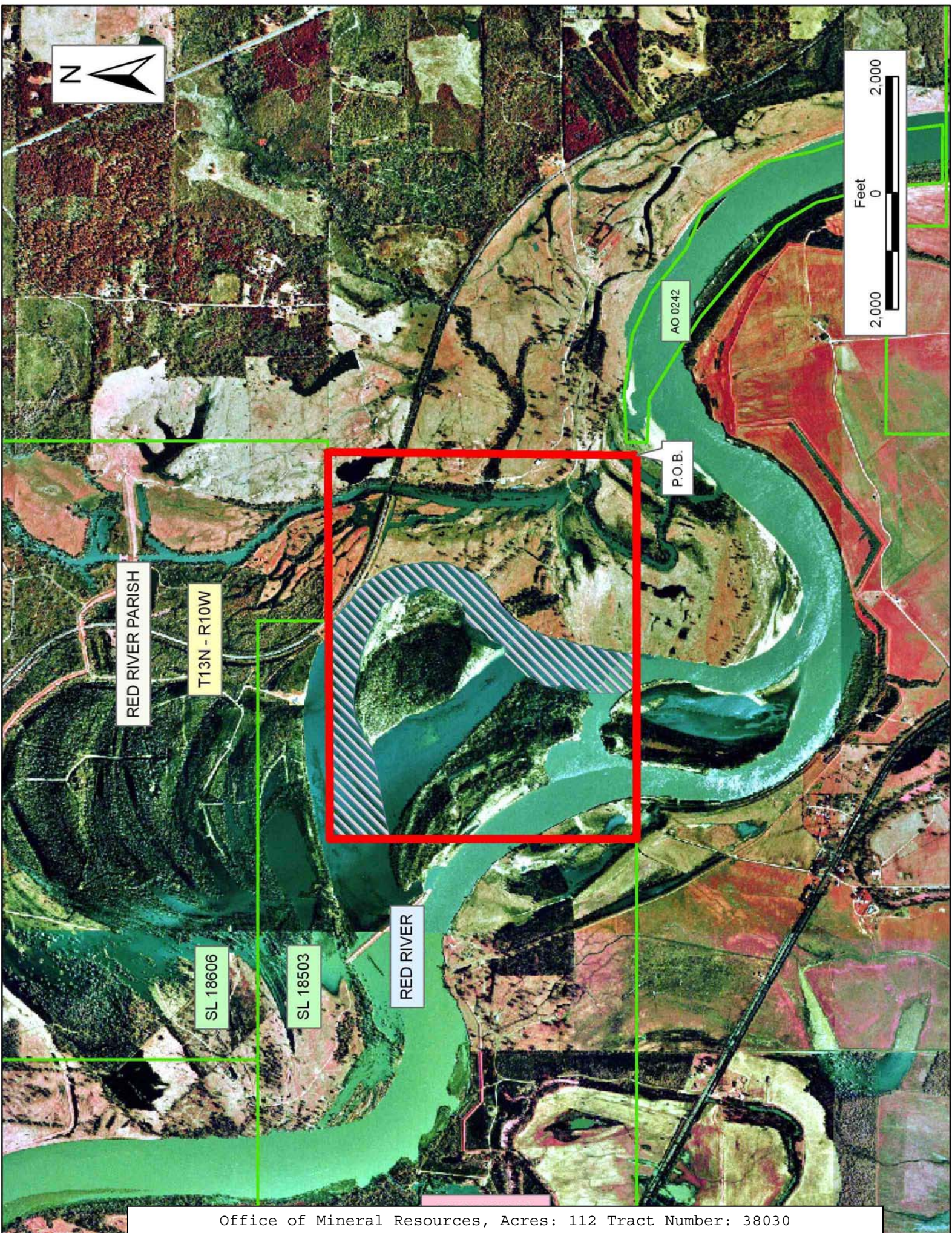
All of the lands now or formerly constituting the beds and bottoms of all water bodies of every nature and description the title of which vests in the State of Louisiana, together with all islands arising therein and other lands formed by accretion or by reliction, where allowed by law, excepting tax adjudicated lands, and not presently under mineral lease on January 11, 2006, situated in Red River Parish, Louisiana, and more particularly described as follows: Beginning at a point having Coordinates of X = 1,718,946.69 and Y = 513,454.43; thence West 6,600.00 feet to a point on the boundary of State Lease No. 18503 having Coordinates of X = 1,712,346.69 and Y = 513,454.43; thence North 5,280.00 feet to a point having Coordinates of X = 1,712,346.69 and Y = 518,734.43; thence North 89 degrees 41 minutes 01 second East 3,749.71 feet to a point having Coordinates of X = 1,716,096.35 and Y = 518,755.14 which is a corner common to State Lease No. 18503 and State Lease No. 18606; thence North 89 degrees 41 minutes 01 second East 2,905.86 feet to a point on the most southern boundary of State Lease No. 18606 having Coordinates of X = 1,719,002.16 and Y = 518,771.20; thence South 00 degrees 35 minutes 52 seconds West 5,317.06 feet to the point of beginning, containing approximately **112 acres**, all as more particularly outlined on a plat on file in the Office of Mineral Resources, Department of Natural Resources. All bearings, distances and coordinates are based on Louisiana Coordinate System of 1927, (North or South Zone), where applicable.

NOTE: The above description of the Tract nominated for lease has been provided and corrected, where required, exclusively by the nomination party. Any mineral lease selected from this Tract and awarded by the Louisiana State Mineral Board shall be without warranty of any kind, either express, implied, or statutory, including, but not limited to, the implied warranties of merchantability and fitness for a particular purpose. Should the mineral lease awarded by the Louisiana State Mineral Board be subsequently modified, cancelled or abrogated due to the existence of conflicting leases, operating agreements, private claims or other future obligations or conditions which may affect all or any portion of the leased Tract, it shall not relieve the Lessee of the obligation to pay any bonus due thereon to the Louisiana State Mineral Board, nor shall the Louisiana State Mineral Board be obligated to refund any consideration paid by the Lessor prior to such modification, cancellation, or abrogation, including, but not limited to, bonuses, rentals and royalties.

Applicant: KEVIN J. SEVERSON

Bidder	Cash Payment	Price/Acre	Rental	Oil	Gas	Other







**TRACT 38031 - Evangeline Parish, Louisiana**

All of the lands now or formerly constituting the beds and bottoms of all water bodies of every nature and description the title of which vests in the State of Louisiana, together with all islands arising therein and other lands formed by accretion or by reliction, where allowed by law, excepting tax adjudicated lands, and not presently under mineral lease on January 11, 2006, situated in Evangeline Parish, Louisiana, and more particularly described as follows: Beginning at a point having Coordinates of X = 1,700,380.00 and Y = 836,725.00; thence South 18,480.00 feet to a point having Coordinates of X = 1,700,380.00 and Y = 818,245.00; thence West 18,480.00 feet to a point having Coordinates of X = 1,681,900.00 and Y = 818,245.00; thence North 15,855.00 feet to the Southwest corner of State Lease No. 16878 having Coordinates of X = 1,681,900.00 and Y = 834,100.00; thence along the boundary of said State Lease No. 16878 the following courses: East 10,700.00 feet and North 2,625.00 feet to a point having Coordinates of X = 1,692,600.00 and Y = 836,725.00; thence East 7,780.00 feet to the point of beginning, **LESS AND EXCEPT** any portion of the Acadiana Conservation Corridor Wildlife Management Area that may lie within the above described tract, containing approximately **69 acres**, all as more particularly outlined on a plat on file in the Office of Mineral Resources, Department of Natural Resources. All bearings, distances and coordinates are based on Louisiana Coordinate System of 1927, (North or South Zone), where applicable.

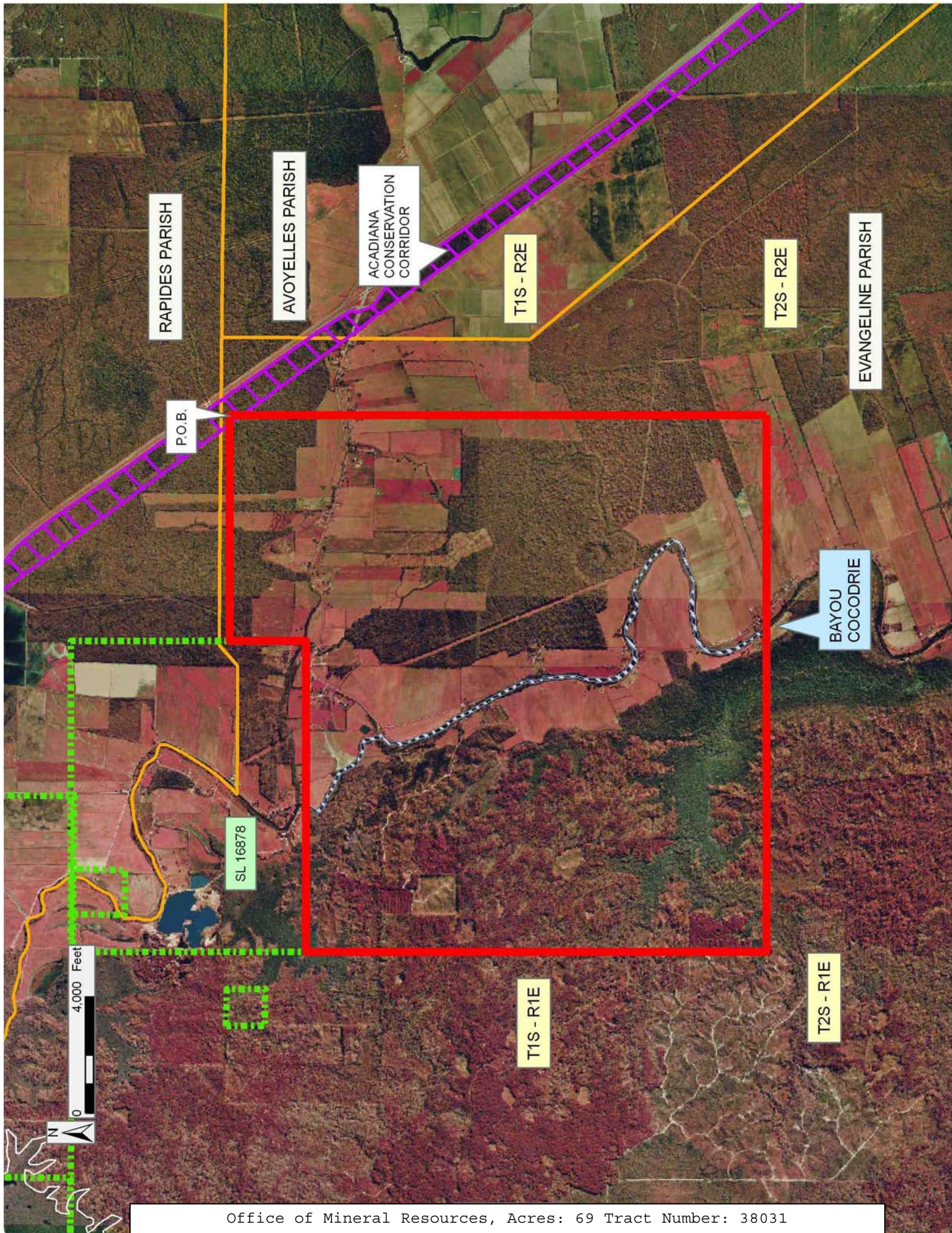
NOTE: The above description of the Tract nominated for lease has been provided and corrected, where required, exclusively by the nomination party. Any mineral lease selected from this Tract and awarded by the Louisiana State Mineral Board shall be without warranty of any kind, either express, implied, or statutory, including, but not limited to, the implied warranties of merchantability and fitness for a particular purpose. Should the mineral lease awarded by the Louisiana State Mineral Board be subsequently modified, cancelled or abrogated due to the existence of conflicting leases, operating agreements, private claims or other future obligations or conditions which may affect all or any portion of the leased Tract, it shall not relieve the Lessee of the obligation to pay any bonus due thereon to the Louisiana State Mineral Board, nor shall the Louisiana State Mineral Board be obligated to refund any consideration paid by the Lessor prior to such modification, cancellation, or abrogation, including, but not limited to, bonuses, rentals and royalties.

NOTE: The above Tract is located upon a restricted scenic river and all operations in this area must be conducted in strict conformity with the regulations of the Corps of Engineers, U.S. Army.

Applicant: CLASSIC PETROLEUM, INC.

Bidder	Cash Payment	Price/Acre	Rental	Oil	Gas	Other





RAPIDES PARISH

AVOUELLES PARISH

ACADIANA  
CONSERVATION  
CORRIDOR

T1S - R2E

T2S - R2E

EVANGELINE PARISH

P.O.B.

BAYOU  
COCODRIE

SL 16878

T1S - R1E

T2S - R1E



**TRACT 38032 - East Feliciana and West Feliciana Parishes, Louisiana**

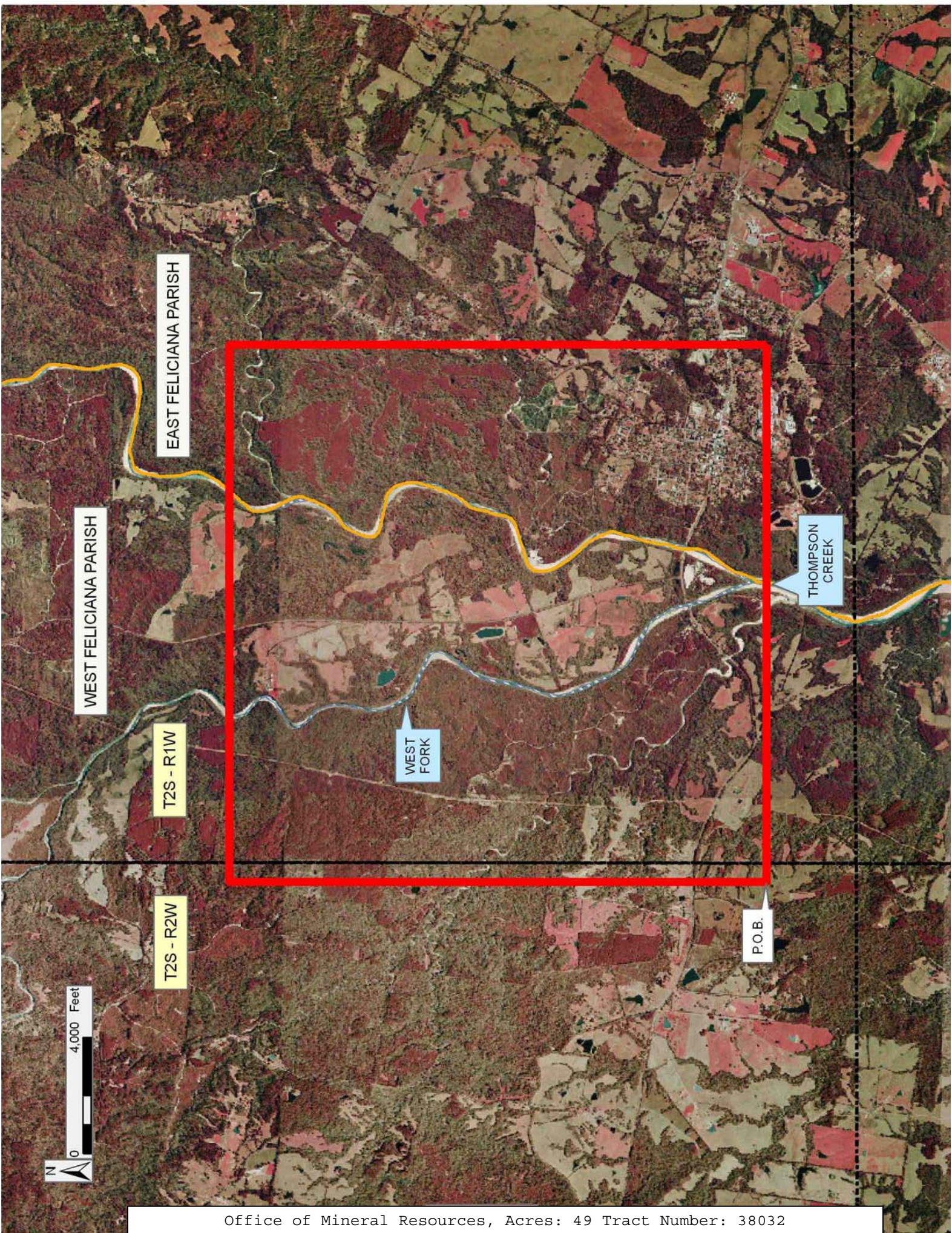
All of the lands now or formerly constituting the beds and bottoms of all water bodies of every nature and description the title of which vests in the State of Louisiana, together with all islands arising therein and other lands formed by accretion or by reliction, where allowed by law, excepting tax adjudicated lands, and not presently under mineral lease on January 11, 2006, situated in East Feliciana and West Feliciana Parishes, Louisiana, and more particularly described as follows: Beginning at a point having Coordinates of X = 2,022,057.97 and Y = 787,523.68; thence North 18,480.00 feet to a point having Coordinates of X = 2,022,057.97 and Y = 806,003.68; thence East 18,480.00 feet to a point having Coordinates of X = 2,040,537.97 and Y = 806,003.68; thence South 18,480.00 feet to a point having Coordinates of X = 2,040,537.97 and Y = 787,523.68; thence West 18,480.00 feet to the point of beginning, containing approximately **49 acres**, all as more particularly outlined on a plat on file in the Office of Mineral Resources, Department of Natural Resources. All bearings, distances and coordinates are based on Louisiana Coordinate System of 1927, (North or South Zone), where applicable.

NOTE: The above description of the Tract nominated for lease has been provided and corrected, where required, exclusively by the nomination party. Any mineral lease selected from this Tract and awarded by the Louisiana State Mineral Board shall be without warranty of any kind, either express, implied, or statutory, including, but not limited to, the implied warranties of merchantability and fitness for a particular purpose. Should the mineral lease awarded by the Louisiana State Mineral Board be subsequently modified, cancelled or abrogated due to the existence of conflicting leases, operating agreements, private claims or other future obligations or conditions which may affect all or any portion of the leased Tract, it shall not relieve the Lessee of the obligation to pay any bonus due thereon to the Louisiana State Mineral Board, nor shall the Louisiana State Mineral Board be obligated to refund any consideration paid by the Lessor prior to such modification, cancellation, or abrogation, including, but not limited to, bonuses, rentals and royalties.

Applicant: CYPRESS ENERGY CORPORATION

Bidder	Cash Payment	Price/Acre	Rental	Oil	Gas	Other





WEST FELICIANA PARISH

EAST FELICIANA PARISH

T2S - R1W

T2S - R2W

WEST FORK

THOMPSON CREEK

P.O.B.





**TRACT 38033 - East Feliciana and West Feliciana Parishes, Louisiana**

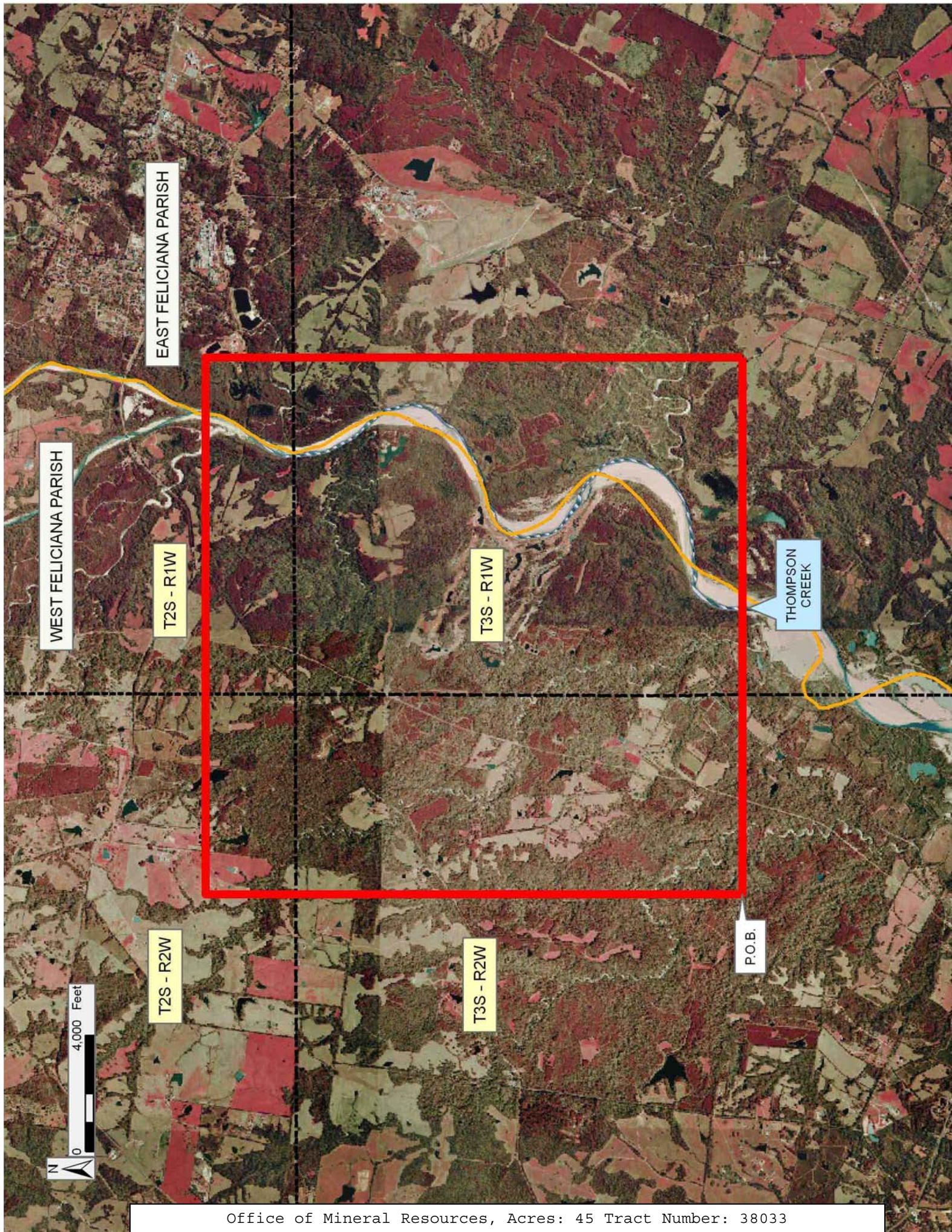
All of the lands now or formerly constituting the beds and bottoms of all water bodies of every nature and description the title of which vests in the State of Louisiana, together with all islands arising therein and other lands formed by accretion or by reliction, where allowed by law, excepting tax adjudicated lands, and not presently under mineral lease on January 11, 2006, situated in East Feliciana and West Feliciana Parishes, Louisiana, and more particularly described as follows: Beginning at a point having Coordinates of X = 2,015,814.13 and Y = 769,043.68; thence North 18,480.00 feet to a point having Coordinates of X = 2,015,814.13 and Y = 787,523.68; thence East 18,480.00 feet to a point having Coordinates of X = 2,034,294.13 and Y = 787,523.68; thence South 18,480.00 feet to a point having Coordinates of X = 2,034,294.13 and Y = 769,043.68; thence West 18,480.00 feet to the point of beginning, containing approximately **45 acres**, all as more particularly outlined on a plat on file in the Office of Mineral Resources, Department of Natural Resources. All bearings, distances and coordinates are based on Louisiana Coordinate System of 1927, (North or South Zone), where applicable.

NOTE: The above description of the Tract nominated for lease has been provided and corrected, where required, exclusively by the nomination party. Any mineral lease selected from this Tract and awarded by the Louisiana State Mineral Board shall be without warranty of any kind, either express, implied, or statutory, including, but not limited to, the implied warranties of merchantability and fitness for a particular purpose. Should the mineral lease awarded by the Louisiana State Mineral Board be subsequently modified, cancelled or abrogated due to the existence of conflicting leases, operating agreements, private claims or other future obligations or conditions which may affect all or any portion of the leased Tract, it shall not relieve the Lessee of the obligation to pay any bonus due thereon to the Louisiana State Mineral Board, nor shall the Louisiana State Mineral Board be obligated to refund any consideration paid by the Lessor prior to such modification, cancellation, or abrogation, including, but not limited to, bonuses, rentals and royalties.

Applicant: CYPRESS ENERGY CORPORATION

Bidder	Cash Payment	Price/Acre	Rental	Oil	Gas	Other







**TRACT 38034 - East Feliciana and West Feliciana Parishes, Louisiana**

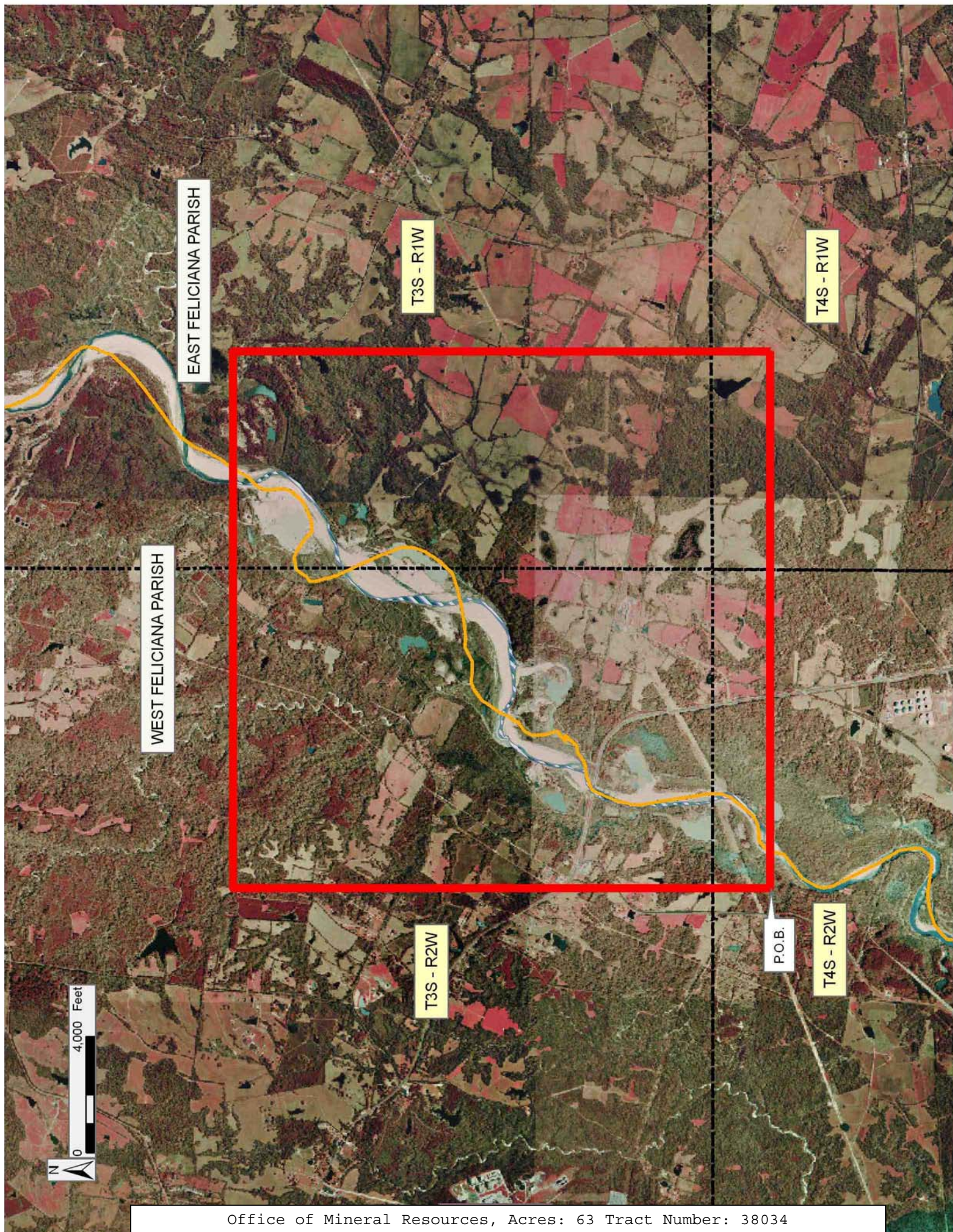
All of the lands now or formerly constituting the beds and bottoms of all water bodies of every nature and description the title of which vests in the State of Louisiana, together with all islands arising therein and other lands formed by accretion or by reliction, where allowed by law, excepting tax adjudicated lands, and not presently under mineral lease on January 11, 2006, situated in East Feliciana and West Feliciana Parishes, Louisiana, and more particularly described as follows: Beginning at a point having Coordinates of X = 2,011,670.57 and Y = 750,563.68; thence North 18,480.00 feet to a point having Coordinates of X = 2,011,670.57 and Y = 769,043.68; thence East 18,480.00 feet to a point having Coordinates of X = 2,030,150.57 and Y = 769,043.68; thence South 18,480.00 feet to a point having Coordinates of X = 2,030,150.57 and Y = 750,563.68; thence West 18,480.00 feet to the point of beginning, containing approximately **63 acres**, all as more particularly outlined on a plat on file in the Office of Mineral Resources, Department of Natural Resources. All bearings, distances and coordinates are based on Louisiana Coordinate System of 1927, (North or South Zone), where applicable.

NOTE: The above description of the Tract nominated for lease has been provided and corrected, where required, exclusively by the nomination party. Any mineral lease selected from this Tract and awarded by the Louisiana State Mineral Board shall be without warranty of any kind, either express, implied, or statutory, including, but not limited to, the implied warranties of merchantability and fitness for a particular purpose. Should the mineral lease awarded by the Louisiana State Mineral Board be subsequently modified, cancelled or abrogated due to the existence of conflicting leases, operating agreements, private claims or other future obligations or conditions which may affect all or any portion of the leased Tract, it shall not relieve the Lessee of the obligation to pay any bonus due thereon to the Louisiana State Mineral Board, nor shall the Louisiana State Mineral Board be obligated to refund any consideration paid by the Lessor prior to such modification, cancellation, or abrogation, including, but not limited to, bonuses, rentals and royalties.

Applicant: CYPRESS ENERGY CORPORATION

Bidder	Cash Payment	Price/Acre	Rental	Oil	Gas	Other





EAST FELICIANA PARISH

WEST FELICIANA PARISH

T3S - R1W

T4S - R1W

T3S - R2W

T4S - R2W

P.O.B.





**TRACT 38035 - East Baton Rouge East Feliciana and West Feliciana Parishes, Louisiana**

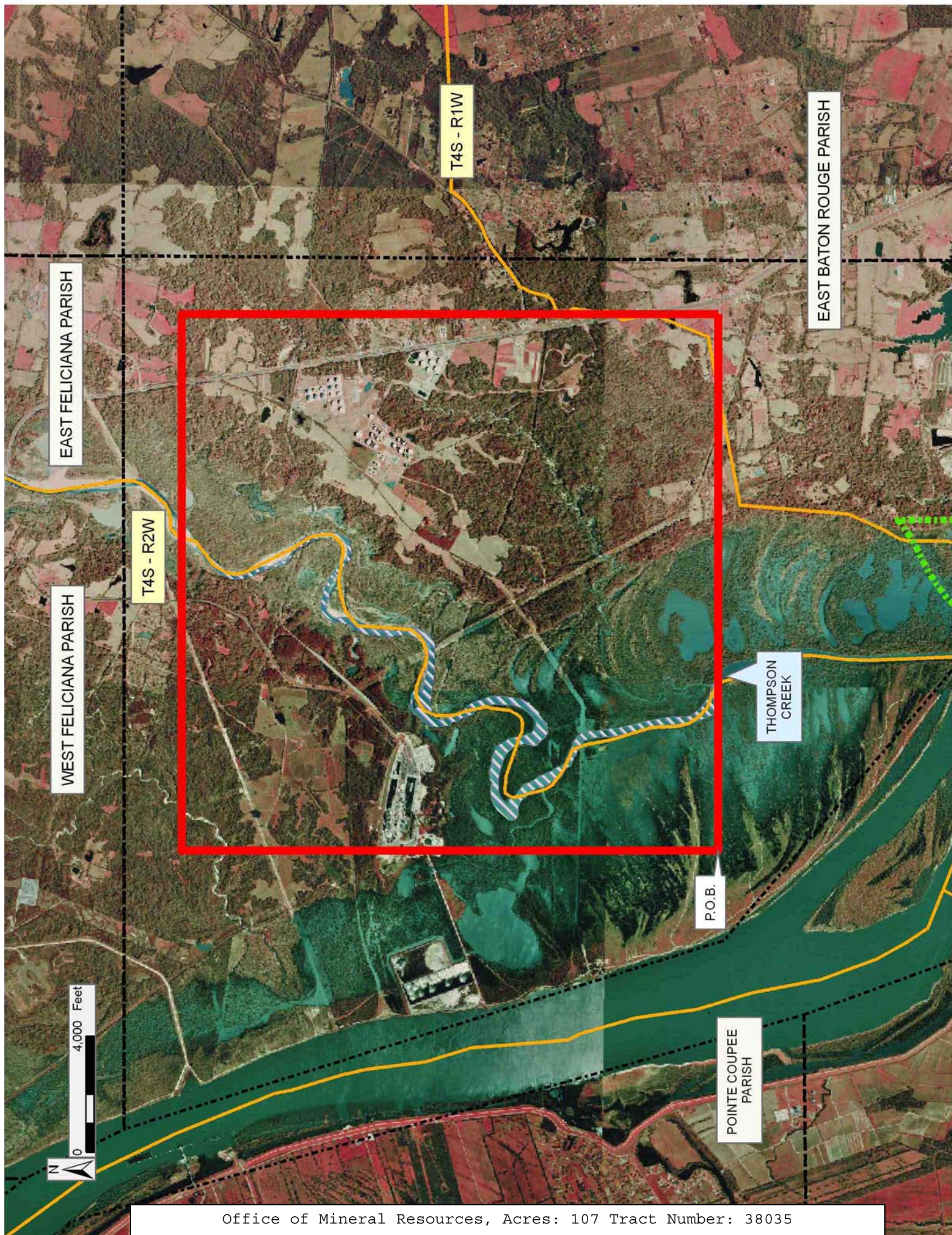
All of the lands now or formerly constituting the beds and bottoms of all water bodies of every nature and description the title of which vests in the State of Louisiana, together with all islands arising therein and other lands formed by accretion or by reliction, where allowed by law, excepting tax adjudicated lands, and not presently under mineral lease on January 11, 2006, situated in East Baton Rouge East Feliciana and West Feliciana Parishes, Louisiana, and more particularly described as follows: Beginning at a point having Coordinates of X = 2,002,178.46 and Y = 732,083.68; thence North 18,480.00 feet to a point having Coordinates of X = 2,002,178.46 and Y = 750,563.68; thence East 18,480.00 feet to a point having Coordinates of X = 2,020,658.46 and Y = 750,563.68; thence South 18,480.00 feet to a point having Coordinates of X = 2,020,658.46 and Y = 732,083.68; thence West 18,480.00 feet to the point of beginning, containing approximately **107 acres**, all as more particularly outlined on a plat on file in the Office of Mineral Resources, Department of Natural Resources. All bearings, distances and coordinates are based on Louisiana Coordinate System of 1927, (North or South Zone), where applicable.

NOTE: The above description of the Tract nominated for lease has been provided and corrected, where required, exclusively by the nomination party. Any mineral lease selected from this Tract and awarded by the Louisiana State Mineral Board shall be without warranty of any kind, either express, implied, or statutory, including, but not limited to, the implied warranties of merchantability and fitness for a particular purpose. Should the mineral lease awarded by the Louisiana State Mineral Board be subsequently modified, cancelled or abrogated due to the existence of conflicting leases, operating agreements, private claims or other future obligations or conditions which may affect all or any portion of the leased Tract, it shall not relieve the Lessee of the obligation to pay any bonus due thereon to the Louisiana State Mineral Board, nor shall the Louisiana State Mineral Board be obligated to refund any consideration paid by the Lessor prior to such modification, cancellation, or abrogation, including, but not limited to, bonuses, rentals and royalties.

Applicant: CYPRESS ENERGY CORPORATION

Bidder	Cash Payment	Price/Acre	Rental	Oil	Gas	Other





EAST FELICIANA PARISH

WEST FELICIANA PARISH

T4S - R1W

T4S - R2W

EAST BATON ROUGE PARISH

THOMPSON CREEK

P.O.B.

POINTE COUPEE PARISH

4,000 Feet





**TRACT 38036 - St. James and St. John The Baptist Parishes, Louisiana**

All of the lands now or formerly constituting the beds and bottoms of all water bodies of every nature and description the title of which vests in the State of Louisiana, together with all islands arising therein and other lands formed by accretion or by reliction, where allowed by law, excepting tax adjudicated lands, and not presently under mineral lease on January 11, 2006, situated in St. James and St. John The Baptist Parishes, Louisiana, and more particularly described as follows: Beginning at the a point having Coordinates of X = 2,195,308.00 and Y = 503,432.00; thence North 69 degrees 11 minutes 16 seconds East 18,479.81 feet to a point having Coordinates of X = 2,212,582.00 and Y = 509,998.00; thence South 20 degrees 48 minutes 39 seconds East 16,102.56 feet to a point having Coordinates of X = 2,218,303.00 and Y = 494,946.00; thence South 69 degrees 11 minutes 16 seconds West 18,479.81 feet to a point having Coordinates of X = 2,201,029.00 and Y = 488,380.00; thence North 20 degrees 48 minutes 39 seconds West 16,102.56 feet to the point of beginning, containing approximately **1,162 acres**, all as more particularly outlined on a plat on file in the Office of Mineral Resources, Department of Natural Resources. All bearings, distances and coordinates are based on Louisiana Coordinate System of 1927, (North or South Zone), where applicable.

NOTE: The above description of the Tract nominated for lease has been provided and corrected, where required, exclusively by the nomination party. Any mineral lease selected from this Tract and awarded by the Louisiana State Mineral Board shall be without warranty of any kind, either express, implied, or statutory, including, but not limited to, the implied warranties of merchantability and fitness for a particular purpose. Should the mineral lease awarded by the Louisiana State Mineral Board be subsequently modified, cancelled or abrogated due to the existence of conflicting leases, operating agreements, private claims or other future obligations or conditions which may affect all or any portion of the leased Tract, it shall not relieve the Lessee of the obligation to pay any bonus due thereon to the Louisiana State Mineral Board, nor shall the Louisiana State Mineral Board be obligated to refund any consideration paid by the Lessor prior to such modification, cancellation, or abrogation, including, but not limited to, bonuses, rentals and royalties.

NOTE: The State of Louisiana does hereby reserve, and this lease shall be subject to, the imprescriptible right of surface use in the nature of a servitude in favor of the Department of Natural Resources, including its Offices and Commissions, for the sole purpose of implementing, constructing, servicing and maintaining approved coastal zone management and/or restoration projects. Utilization of any and all rights derived under this lease by the mineral lessee, its agents, successors or assigns, shall not interfere with nor hinder the reasonable surface use by the Department of Natural Resources, its Offices or Commissions, as herein above reserved.



Applicant: PATRICK L. DONOHUE PETROLEUM PROPERTIES, INC.

Bidder	Cash Payment	Price/Acre	Rental	Oil	Gas	Other



ST JOHN THE BAPTIST PARISH

MISSISSIPPI RIVER

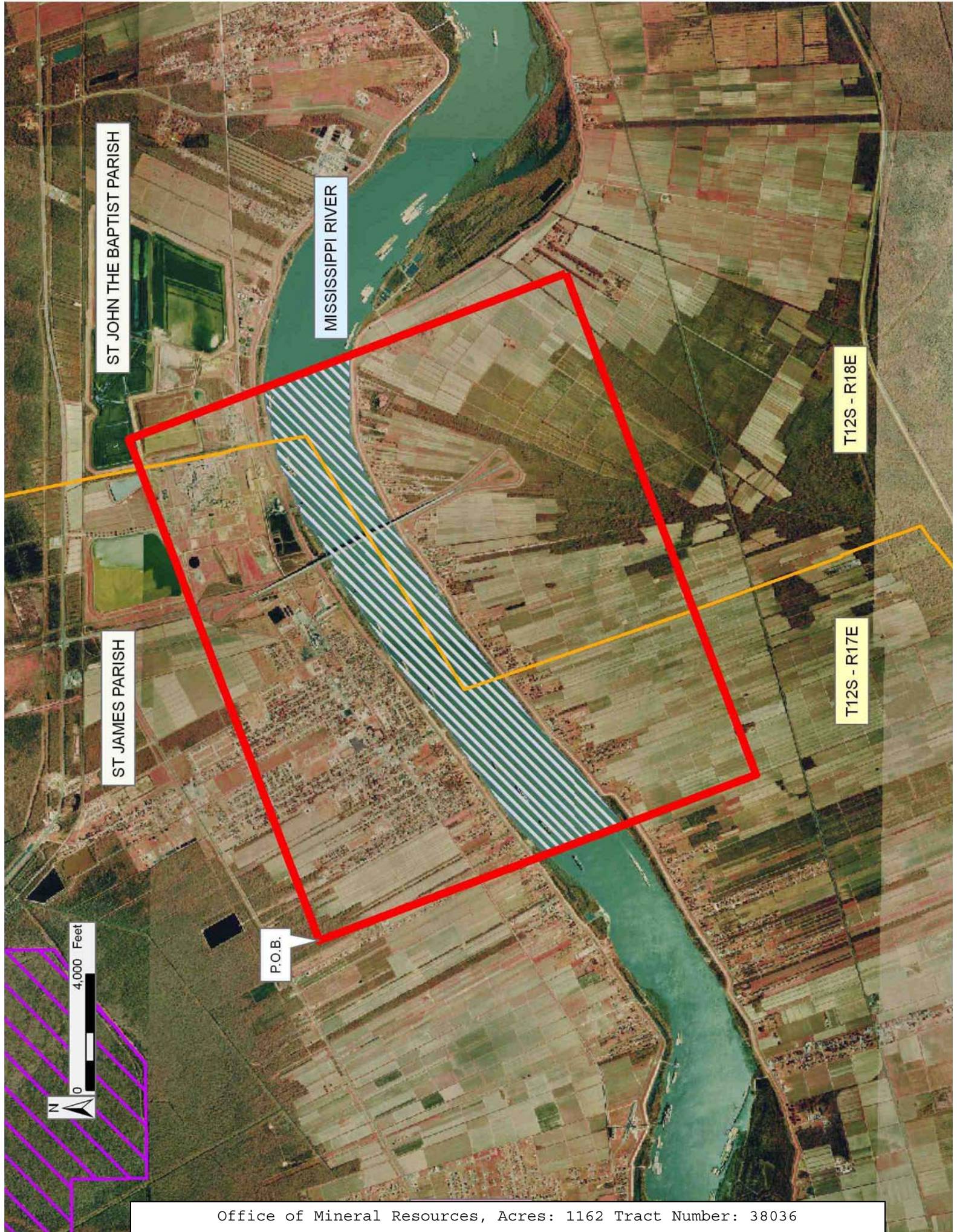
T12S - R18E

T12S - R17E

ST JAMES PARISH

P.O.B.

4,000 Feet





**TRACT 38037 - St. James Parish, Louisiana**

All of the lands now or formerly constituting the beds and bottoms of all water bodies of every nature and description the title of which vests in the State of Louisiana, together with all islands arising therein and other lands formed by accretion or by reliction, where allowed by law, excepting tax adjudicated lands, and not presently under mineral lease on January 11, 2006, situated in St. James Parish, Louisiana, and more particularly described as follows: Beginning at the a point having Coordinates of X = 2,195,308.00 and Y = 503,432.00; thence South 20 degrees 48 minutes 39 seconds East 16,102.56 feet to a point having Coordinates of X = 2,201,029.00 and Y = 488,380.00; thence South 69 degrees 11 minutes 16 seconds West 18,479.81 feet to a point having Coordinates of X = 2,183,755.00 and Y = 481,814.00; thence North 20 degrees 48 minutes 39 seconds West 16,102.56 feet to a point having Coordinates of X = 2,178,034.00 and Y = 496,866.00; thence North 69 degrees 11 minutes 16 seconds East 18,479.81 feet to the point of beginning, containing approximately **1,116 acres**, all as more particularly outlined on a plat on file in the Office of Mineral Resources, Department of Natural Resources. All bearings, distances and coordinates are based on Louisiana Coordinate System of 1927, (North or South Zone), where applicable.

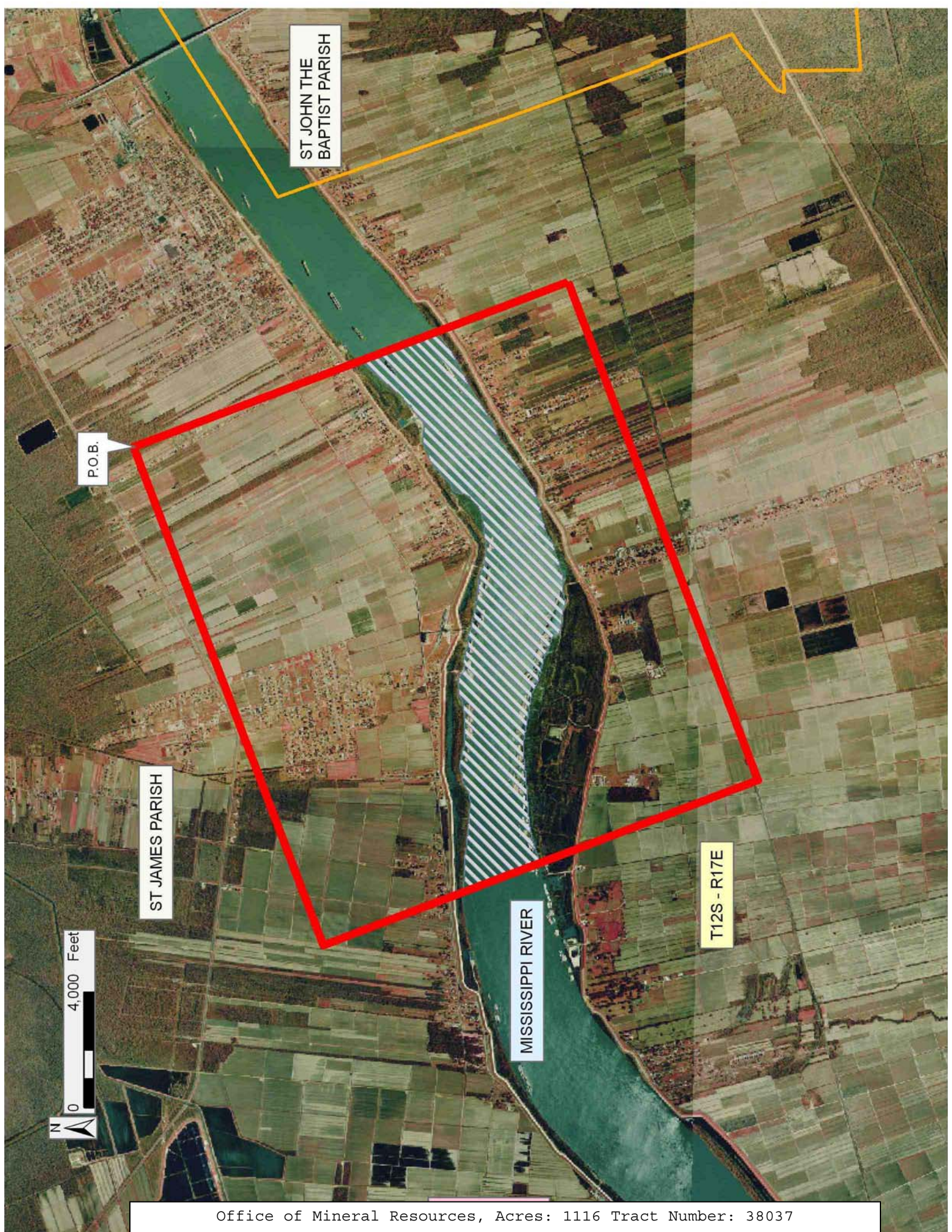
NOTE: The above description of the Tract nominated for lease has been provided and corrected, where required, exclusively by the nomination party. Any mineral lease selected from this Tract and awarded by the Louisiana State Mineral Board shall be without warranty of any kind, either express, implied, or statutory, including, but not limited to, the implied warranties of merchantability and fitness for a particular purpose. Should the mineral lease awarded by the Louisiana State Mineral Board be subsequently modified, cancelled or abrogated due to the existence of conflicting leases, operating agreements, private claims or other future obligations or conditions which may affect all or any portion of the leased Tract, it shall not relieve the Lessee of the obligation to pay any bonus due thereon to the Louisiana State Mineral Board, nor shall the Louisiana State Mineral Board be obligated to refund any consideration paid by the Lessor prior to such modification, cancellation, or abrogation, including, but not limited to, bonuses, rentals and royalties.

NOTE: The State of Louisiana does hereby reserve, and this lease shall be subject to, the imprescriptible right of surface use in the nature of a servitude in favor of the Department of Natural Resources, including its Offices and Commissions, for the sole purpose of implementing, constructing, servicing and maintaining approved coastal zone management and/or restoration projects. Utilization of any and all rights derived under this lease by the mineral lessee, its agents, successors or assigns, shall not interfere with nor hinder the reasonable surface use by the Department of Natural Resources, its Offices or Commissions, as herein above reserved.

Applicant: PATRICK L. DONOHUE PROPERTIES, INC.

Bidder	Cash Payment	Price/Acre	Rental	Oil	Gas	Other





ST JOHN THE BAPTIST PARISH

P.O.B.

ST JAMES PARISH

MISSISSIPPI RIVER

T12S - R17E





**TRACT 38038 - St. James Parish, Louisiana**

All of the lands now or formerly constituting the beds and bottoms of all water bodies of every nature and description the title of which vests in the State of Louisiana, together with all islands arising therein and other lands formed by accretion or by reliction, where allowed by law, excepting tax adjudicated lands, and not presently under mineral lease on January 11, 2006, situated in St. James Parish, Louisiana, and more particularly described as follows: Beginning at the a point having Coordinates of X = 2,178,034.00 and Y = 496,866.00; thence South 20 degrees 48 minutes 39 seconds East 16,102.56 feet to a point having Coordinates of X = 2,183,755.00 and Y = 481,814.00; thence South 69 degrees 11 minutes 16 seconds West 18,479.81 feet to a point having Coordinates of X = 2,166,481.00 and Y = 475,248.00; thence North 20 degrees 48 minutes 39 seconds West 16,102.56 feet to a point having Coordinates of X = 2,160,760.00 and Y = 490,300.00; thence North 69 degrees 11 minutes 16 seconds East 18,479.81 feet to the point of beginning, **LESS AND EXCEPT** any portion of State Lease No. 560, as amended, and State Lease No. 6122, as amended, that may lie within the above described tract, containing approximately **1,312 acres**, all as more particularly outlined on a plat on file in the Office of Mineral Resources, Department of Natural Resources. All bearings, distances and coordinates are based on Louisiana Coordinate System of 1927, (North or South Zone), where applicable.

NOTE: The above description of the Tract nominated for lease has been provided and corrected, where required, exclusively by the nomination party. Any mineral lease selected from this Tract and awarded by the Louisiana State Mineral Board shall be without warranty of any kind, either express, implied, or statutory, including, but not limited to, the implied warranties of merchantability and fitness for a particular purpose. Should the mineral lease awarded by the Louisiana State Mineral Board be subsequently modified, cancelled or abrogated due to the existence of conflicting leases, operating agreements, private claims or other future obligations or conditions which may affect all or any portion of the leased Tract, it shall not relieve the Lessee of the obligation to pay any bonus due thereon to the Louisiana State Mineral Board, nor shall the Louisiana State Mineral Board be obligated to refund any consideration paid by the Lessor prior to such modification, cancellation, or abrogation, including, but not limited to, bonuses, rentals and royalties.

NOTE: The State of Louisiana does hereby reserve, and this lease shall be subject to, the imprescriptible right of surface use in the nature of a servitude in favor of the Department of Natural Resources, including its Offices and Commissions, for the sole purpose of implementing, constructing, servicing and maintaining approved coastal zone management and/or restoration projects. Utilization of any and all rights derived under this lease by the mineral lessee, its agents, successors or assigns, shall not interfere with nor hinder the reasonable surface use by the

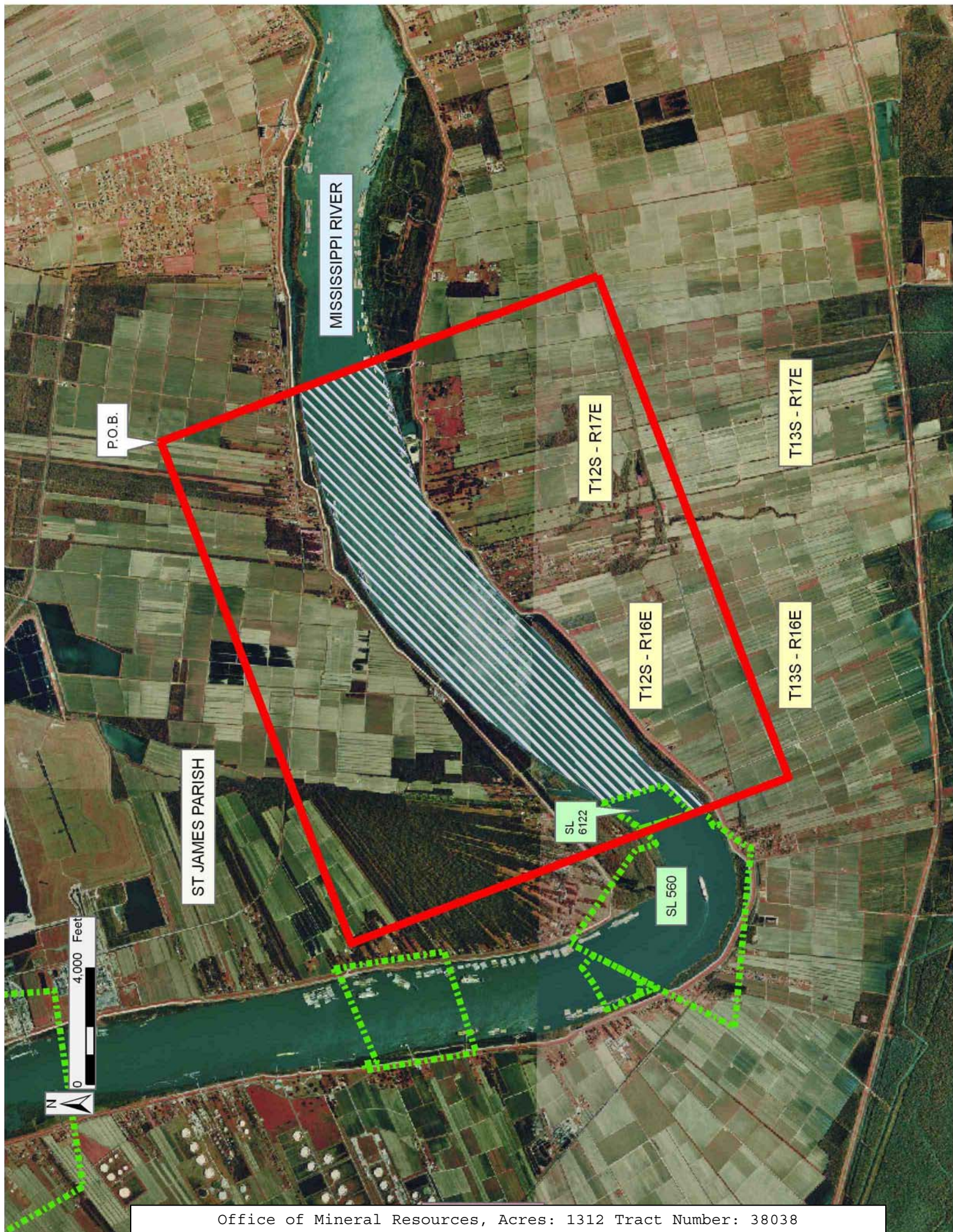


Department of Natural Resources, its Offices or Commissions, as herein above reserved.

Applicant: PATRICK L. DONOHUE PETROLEUM PROPERTIES, INC.

Bidder	Cash Payment	Price/Acre	Rental	Oil	Gas	Other





MISSISSIPPI RIVER

P.O.B.

ST JAMES PARISH

SL 6122

SL 560

T12S - R17E

T12S - R16E

T13S - R17E

T13S - R16E

4,000 Feet

