

**TRACT 37029 - Jefferson and Lafourche Parishes, Louisiana**

All of the lands now or formerly constituting the beds and bottoms of all water bodies of every nature and description the title of which vests in the State of Louisiana, together with all islands arising therein and other lands formed by accretion or by reliction, where allowed by law, excepting tax adjudicated lands, and not presently under mineral lease on January 12, 2005, situated in Jefferson and Lafourche Parishes, Louisiana, and more particularly described as follows: Beginning at a point having Coordinates of X = 2,372,707.57 and Y = 305,328.94; thence East 6,818.28 feet to a point on the South boundary of the Northern portion of State Lease No. 2383, as amended, having Coordinates of X = 2,379,525.85 and Y = 305,328.94; thence along the Southern boundary of the said Northern portion of State Lease No. 2383, as amended, the following courses: South 38 degrees 55 minutes 37 seconds East 165.76 feet, South 44 degrees 01 minutes 44 seconds East 208.63 feet, South 77 degrees 18 minutes 02 seconds East 363.90 feet, South 78 degrees 01 minutes 26 seconds East 337.34 feet, North 77 degrees 16 minutes 32 seconds East 317.81 feet, North 68 degrees 33 minutes 08 seconds East 150.42 feet, North 59 degrees 35 minutes 20 seconds East 266.69 feet, North 59 degrees 49 minutes 09 seconds East 238.70 feet, South 30 degrees 31 minutes 09 seconds West 406.30 feet, South 35 degrees 45 minutes 14 seconds West 154.03 feet, South 36 degrees 23 minutes 04 seconds West 236.01 feet, North 85 degrees 45 minutes 49 seconds East 406.11 feet, North 79 degrees 26 minutes 20 seconds East 300.08 feet, North 77 degrees 46 minutes 30 seconds East 306.96 feet, North 74 degrees 09 minutes 25 seconds East 384.61 feet, North 67 degrees 14 minutes 56 seconds East 336.15 feet, North 65 degrees 33 minutes 22 seconds East 362.49 feet, North 57 degrees 08 minutes 39 seconds East 285.70 feet, North 53 degrees 34 minutes 09 seconds East 261.01 feet, North 46 degrees 21 minutes 50 seconds East 297.07 feet, and North 39 degrees 25 minutes 40 seconds East 214.61 feet to a point having Coordinates of X = 2,383,721.30 and Y = 305,830.77; thence South 7,287.59 feet to the Northeast corner of State Lease No. 18146 having Coordinates of X = 2,383,721.30 and Y = 298,543.18; thence West 1,850.00 feet along the North boundary of said State Lease No. 18146 to the Southeast corner of State Lease No. 18145 having Coordinates of X = 2,381,871.30 and Y = 298,543.18; thence North 1,942.65 feet along the East boundary of said State Lease No. 18145 to its Northeast corner located on the South boundary of the Southern portion of said State Lease No. 2383 having Coordinates of X = 2,381,871.30 and Y = 300,485.83; thence along the Southern, Eastern, Northern and Western boundaries of the Southern portion of said State Lease No. 2383 the following courses: Southeasterly along an arc to the right with a radius of 10,000.00 feet to a point having Coordinates of X = 2,382,138.00 and Y = 300,425.01, Southeasterly along an arc to the left with a radius of 4,025.00 feet to a point having Coordinates of X = 2,382,790.01 and Y = 300,330.01, Northeasterly along an arc to the left with a radius of 1,025.00 feet to a point having Coordinates of X = 2,383,215.01 and Y = 300,380.01, Northeasterly along an arc to the left with a radius of 500.00 feet to a point having Coordinates of X = 2,383,400.00 and Y = 300,552.01, Northeasterly along an arc to the

left with a radius of 1,000.00 feet to a point having Coordinates of X = 2,383,425.00 and Y = 300,853.01, Northwesterly along an arc to the left with a radius of 2,150.00 feet to a point having Coordinates of X = 2,381,755.00 and Y = 302,870.00, Northwesterly along an arc to the left with a radius of 5,000.00 feet to a point having Coordinates of X = 2,380,455.00 and Y = 303,005.00, West 252.00 feet to a point having Coordinates of X = 2,380,203.00 and Y = 303,005.00, Northwesterly along an arc to the right with a radius of 500.00 feet to a point having Coordinates of X = 2,379,932.63 and Y = 303,079.37, Northwesterly along an arc to the left with a radius of 3,050.00 feet to a point having Coordinates of X = 2,378,283.07 and Y = 303,895.47, Northwesterly along an arc to the left with a radius of 3,050.00 feet to a point having Coordinates of X = 2,378,180.01 and Y = 303,910.01, Northwesterly along an arc to the left with a radius of 1,000.00 feet to a point having Coordinates of X = 2,378,002.32 and Y = 303,923.50, Southwesterly along an arc to the left with a radius of 1,750.00 feet to a point having Coordinates of X = 2,377,540.00 and Y = 303,875.00, Southwesterly along an arc to the left with a radius of 1,000.00 feet to a point having Coordinates of X = 2,377,015.00 and Y = 303,475.00, Southwesterly along an arc to the left with a radius of 2,025.00 feet to a point having Coordinates of X = 2,376,790.28 and Y = 302,205.35, Southeasterly along an arc to the left with a radius of 3,200.00 feet to a point having Coordinates of X = 2,376,850.01 and Y = 301,575.01 and Southeasterly along an arc to the left with a radius of 1,450.00 feet to a point having Coordinates of X = 2,377,815.01 and Y = 300,630.01; thence South 81 degrees 55 minutes 39 seconds West 1,782.17 feet to the Northeast corner of State Lease No. 18144 having Coordinates of X = 2,376,050.50 and Y = 300,379.75; thence West 3,342.93 feet along the North boundary of said State Lease No. 18144 to its Northwest corner having Coordinates of X = 2,372,707.57 and Y = 300,379.74; thence North 4,949.20 feet to the point of beginning, **LESS AND EXCEPT** any portion of State Lease No. 2383, as amended, which may lie within the above described tract, containing approximately **888.20 acres**, all as more particularly outlined on a plat on file in the Office of Mineral Resources, Department of Natural Resources. All bearings, distances and coordinates are based on Louisiana Coordinate System of 1927, (North or South Zone), where applicable.

NOTE: The above description of the Tract nominated for lease has been provided and corrected, where required, exclusively by the nomination party. Any mineral lease selected from this Tract and awarded by the Louisiana State Mineral Board shall be without warranty of any kind, either express, implied, or statutory, including, but not limited to, the implied warranties of merchantability and fitness for a particular purpose. Should the mineral lease awarded by the Louisiana State Mineral Board be subsequently modified, cancelled or abrogated due to the existence of conflicting leases, operating agreements, private claims or other future obligations or conditions which may affect all or any portion of the leased Tract, it shall not relieve the Lessee of the obligation to pay any bonus due thereon to the Louisiana State Mineral Board, nor shall

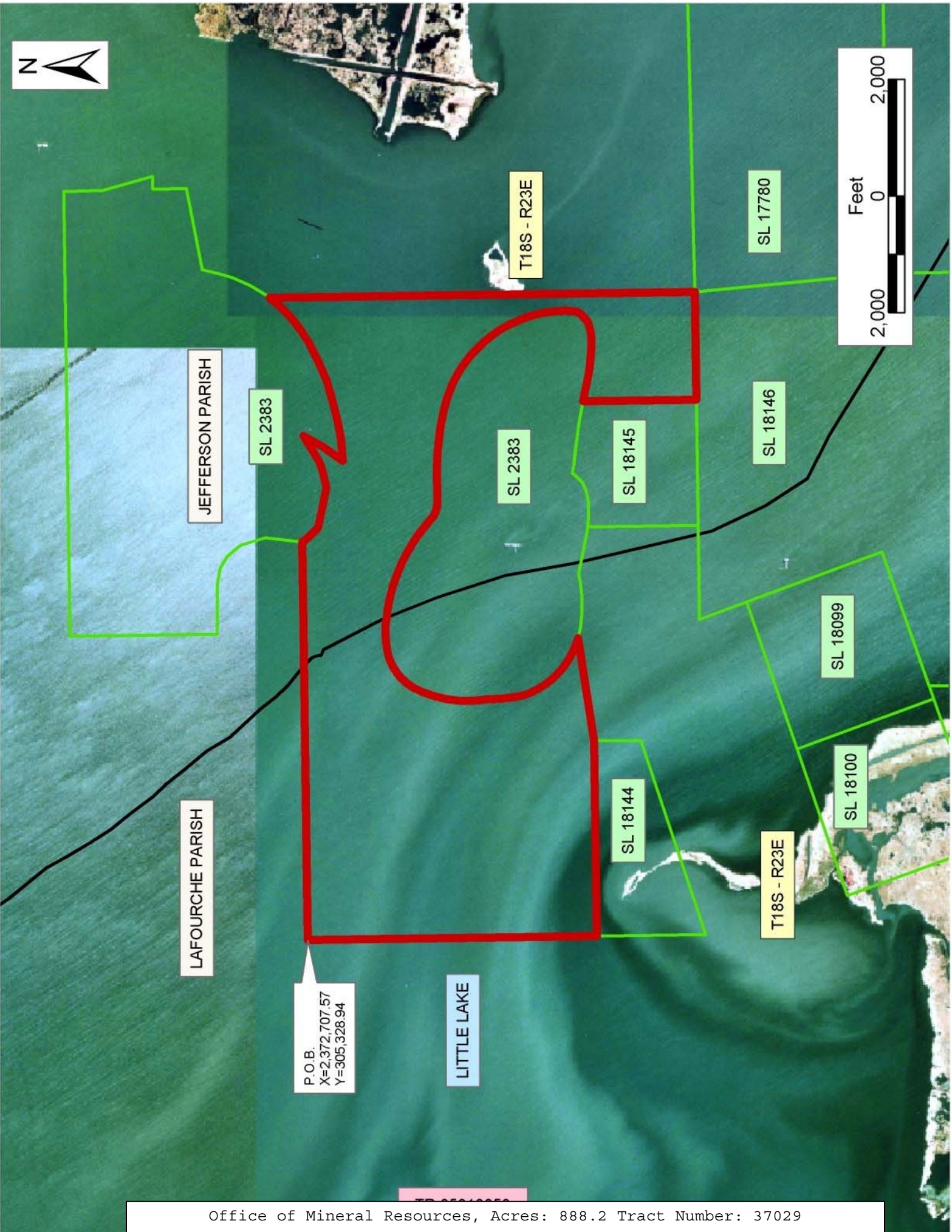
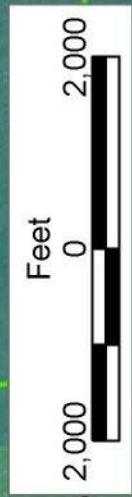
the Louisiana State Mineral Board be obligated to refund any consideration paid by the Lessor prior to such modification, cancellation, or abrogation, including, but not limited to, bonuses, rentals and royalties.

NOTE: The State of Louisiana does hereby reserve, and this lease shall be subject to, the imprescriptible right of surface use in the nature of a servitude in favor of the Department of Natural Resources, including its Offices and Commissions, for the sole purpose of implementing, constructing, servicing and maintaining approved coastal zone management and/or restoration projects. Utilization of any and all rights derived under this lease by the mineral lessee, its agents, successors or assigns, shall not interfere with nor hinder the reasonable surface use by the Department of Natural Resources, its Offices or Commissions, as herein above reserved.

NOTE: The Department of Wildlife and Fisheries has designated certain areas in the coastal waters of the State of Louisiana as Oyster Seed Bed Areas. The exact location of those Seed Bed Areas must be obtained from the Department of Wildlife and Fisheries and any work done under a mineral lease from the State of Louisiana may necessarily be conducted in conformity with the rules and regulations promulgated by the said Department of Wildlife and Fisheries for Oyster Seed Bed Areas.

Applicant: Energy Partners, Inc.

Bidder	Cash Payment	Price/Acre	Rental	Oil	Gas	Other



JEFFERSON PARISH

SL 2383

T18S - R23E

SL 17780

SL 18146

SL 2383

SL 18145

SL 18099

LAFOURCHE PARISH

SL 18144

T18S - R23E

SL 18100

P.O.B.  
X=2,372,707.57  
Y=305,328.94

LITTLE LAKE

**TRACT 37030 - Lafourche Parish, Louisiana**

All of the lands now or formerly constituting the beds and bottoms of all water bodies of every nature and description the title of which vests in the State of Louisiana, together with all islands arising therein and other lands formed by accretion or by reliction, where allowed by law, excepting tax adjudicated lands, and not presently under mineral lease on January 12, 2005, situated in Lafourche Parish, Louisiana, and more particularly described as follows: Beginning at a point having Coordinates of X = 2,368,184.89 and Y = 293,706.00; thence North 01 degrees 25 minutes 26 seconds West 11,626.53 feet to a point having Coordinates of X = 2,367,895.98 and Y = 305,328.94; thence East 4,811.59 feet to a point having Coordinates of X = 2,372,707.57 and Y = 305,328.94; thence South 4,949.20 feet to the Northwest corner of State Lease No. 18144 having Coordinates of X = 2,372,707.57 and Y = 300,379.74; thence South 1,866.40 feet along the West boundary of said State Lease No. 18144 to its Southwest corner having Coordinates of X = 2,372,707.57 and Y = 298,513.34; thence North 72 degrees 18 minutes 32 seconds East 1,602.44 feet along the South boundary of said State Lease No. 18144 to a point having Coordinates of X = 2,374,234.23 and Y = 299,000.30; thence South 18 degrees 06 minutes 05 seconds East 2,498.59 feet to a point on the North boundary of State Lease No. 18100 having Coordinates of X = 2,375,010.54 and Y = 296,625.37; thence South 71 degrees 53 minutes 55 seconds West 1,761.73 feet along the North boundary of said State Lease No. 18100 to its Northwest corner having Coordinates of X = 2,373,336.00 and Y = 296,078.00; thence South 19 degrees 13 minutes 16 seconds East 2,512.03 feet along the West boundary of said State Lease No. 18100 to its Southwest corner having Coordinates of X = 2,374,163.00 and Y = 293,706.00; thence West 5,978.11 feet to the point of beginning, containing approximately **1,239 acres**, all as more particularly outlined on a plat on file in the Office of Mineral Resources, Department of Natural Resources. All bearings, distances and coordinates are based on Louisiana Coordinate System of 1927, (North or South Zone), where applicable.

NOTE: The above description of the Tract nominated for lease has been provided and corrected, where required, exclusively by the nomination party. Any mineral lease selected from this Tract and awarded by the Louisiana State Mineral Board shall be without warranty of any kind, either express, implied, or statutory, including, but not limited to, the implied warranties of merchantability and fitness for a particular purpose. Should the mineral lease awarded by the Louisiana State Mineral Board be subsequently modified, cancelled or abrogated due to the existence of conflicting leases, operating agreements, private claims or other future obligations or conditions which may affect all or any portion of the leased Tract, it shall not relieve the Lessee of the obligation to pay any bonus due thereon to the Louisiana State Mineral Board, nor shall the Louisiana State Mineral Board be obligated to refund any consideration paid by the Lessor prior to such modification, cancellation, or abrogation, including, but not limited to, bonuses, rentals and royalties.

NOTE: The State of Louisiana does hereby reserve, and this lease shall be subject to, the imprescriptible right of surface use in the nature of a servitude in favor of the Department of Natural Resources, including its Offices and Commissions, for the sole purpose of implementing, constructing, servicing and maintaining approved coastal zone management and/or restoration projects. Utilization of any and all rights derived under this lease by the mineral lessee, its agents, successors or assigns, shall not interfere with nor hinder the reasonable surface use by the Department of Natural Resources, its Offices or Commissions, as herein above reserved.

NOTE: The Department of Wildlife and Fisheries has designated certain areas in the coastal waters of the State of Louisiana as Oyster Seed Bed Areas. The exact location of those Seed Bed Areas must be obtained from the Department of Wildlife and Fisheries and any work done under a mineral lease from the State of Louisiana may necessarily be conducted in conformity with the rules and regulations promulgated by the said Department of Wildlife and Fisheries for Oyster Seed Bed Areas.

Applicant: Energy Partners, Inc.

Bidder	Cash Payment	Price/Acre	Rental	Oil	Gas	Other



SL 2383

SL 2383

SL 18145

SL 18146

SL 7501

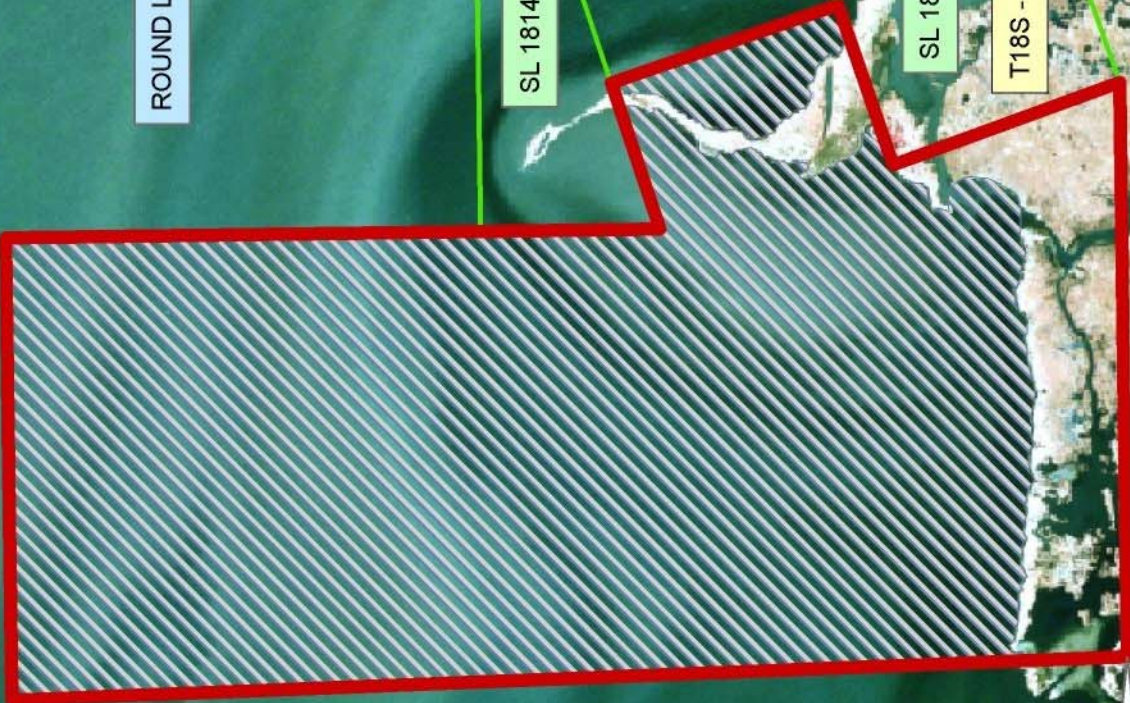
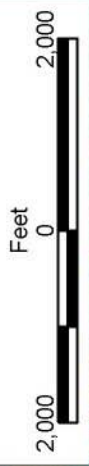
JEFFERSON PARISH

ROUND LAKE

SL 18144

SL 18100

T18S - R23E



T19S - R23E

SL 17642

LAFOURCHE PARISH

P.O.B.  
X=2,368,184.89  
Y=293,706.00

T18S - R22E

**TRACT 37031 - Jefferson and Lafourche Parishes, Louisiana**

All of the lands now or formerly constituting the beds and bottoms of all water bodies of every nature and description the title of which vests in the State of Louisiana, together with all islands arising therein and other lands formed by accretion or by reliction, where allowed by law, excepting tax adjudicated lands, and not presently under mineral lease on January 12, 2005, situated in Jefferson and Lafourche Parishes, Louisiana, and more particularly described as follows: Beginning at the Northeast corner of State Lease No. 18144 having Coordinates of X = 2,376,050.50 and Y = 300,379.75; thence North 81 degrees 55 minutes 39 seconds East 1,782.17 feet to a point on the South boundary of the Southern portion of State Lease No. 2383, as amended, having Coordinates of X = 2,377,815.01 and Y = 300,630.01; thence along the South boundary of said State Lease No. 2383, the following courses: Easterly along an arc to the left with a radius of 2,300.00 feet to a point having Coordinates of X = 2,378,907.77 and Y = 300,601.33, Southeasterly along an arc to the right with a radius of 10,000.00 feet to a point having Coordinates of X = 2,379,480.00 and Y = 300,479.99 and Southeasterly along an arc to the left with a radius of 3,075.00 feet to the Northwest corner of State Lease No. 18145 having Coordinates of X = 2,379,721.30 and Y = 300,437.87, thence South 1,894.68 feet along the West boundary of said State Lease No. 18145 to its Southwest corner located on the North boundary of State Lease No. 18146 having Coordinates of X = 2,379,721.30 and Y = 298,543.18; thence West 1,612.97 feet along the North boundary of said State Lease No. 18146 to its Northwest corner having Coordinates of X = 2,378,108.33 and Y = 298,543.18; thence South 19 degrees 31 minutes 34 seconds East 860.68 feet along the West boundary of said State Lease No. 18146 to the Northeast corner of State Lease No. 18099 having Coordinates of X = 2,378,396.00 and Y = 297,732.00; thence South 71 degrees 53 minutes 55 seconds West 2,661.73 feet along the North boundary of said State Lease No. 18099 to its Northwest corner, also being the Northeast corner of State Lease No. 18100 having Coordinates of X = 2,375,866.00 and Y = 296,905.00; thence South 71 degrees 53 minutes 55 seconds West 900.00 feet along the North boundary of said State Lease No. 18100 to a point having Coordinates of X = 2,375,010.54 and Y = 296,625.37; thence North 18 degrees 06 minutes 05 seconds West 2,498.59 feet to a point on the South boundary of said State Lease No. 18144 having Coordinates of X = 2,374,234.23 and Y = 299,000.30; thence North 72 degrees 18 minutes 32 seconds East 1,906.78 feet along the South boundary of said State Lease No. 18144 to its Southeast corner having Coordinates of X = 2,376,050.84 and Y = 299,579.75; thence North 00 degrees 01 minutes 25 seconds West 800.00 feet along the East boundary of said State Lease No. 18144 to the point of beginning, **LESS AND EXCEPT** any portion of State Lease No. 2383, as amended, which may lie within the above described tract, containing approximately **314.75 acres**, all as more particularly outlined on a plat on file in the Office of Mineral Resources, Department of Natural Resources. All bearings, distances and coordinates are based on Louisiana Coordinate System of 1927, (North or South Zone), where applicable.



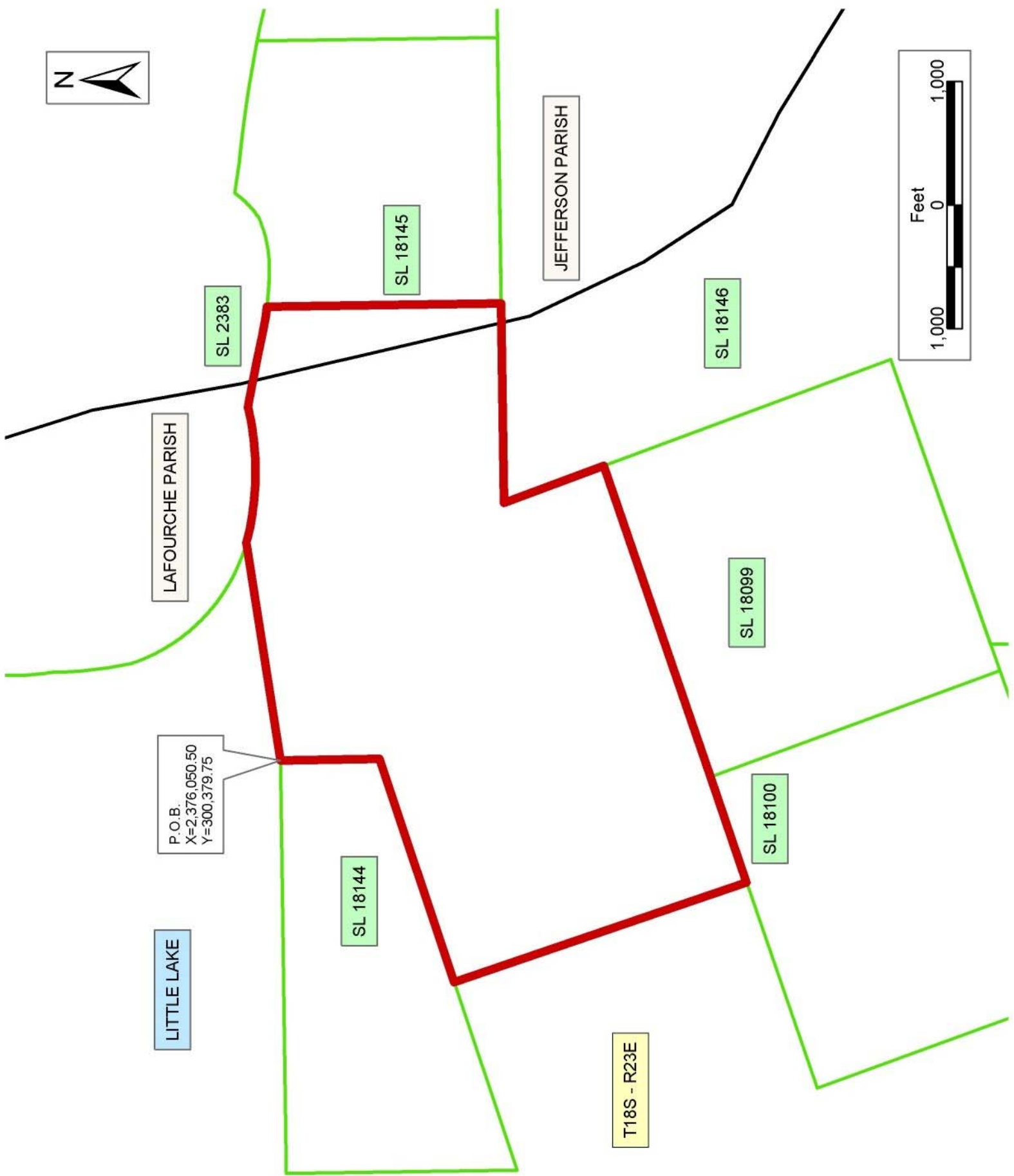
NOTE: The above description of the Tract nominated for lease has been provided and corrected, where required, exclusively by the nomination party. Any mineral lease selected from this Tract and awarded by the Louisiana State Mineral Board shall be without warranty of any kind, either express, implied, or statutory, including, but not limited to, the implied warranties of merchantability and fitness for a particular purpose. Should the mineral lease awarded by the Louisiana State Mineral Board be subsequently modified, cancelled or abrogated due to the existence of conflicting leases, operating agreements, private claims or other future obligations or conditions which may affect all or any portion of the leased Tract, it shall not relieve the Lessee of the obligation to pay any bonus due thereon to the Louisiana State Mineral Board, nor shall the Louisiana State Mineral Board be obligated to refund any consideration paid by the Lessor prior to such modification, cancellation, or abrogation, including, but not limited to, bonuses, rentals and royalties.

NOTE: The State of Louisiana does hereby reserve, and this lease shall be subject to, the imprescriptible right of surface use in the nature of a servitude in favor of the Department of Natural Resources, including its Offices and Commissions, for the sole purpose of implementing, constructing, servicing and maintaining approved coastal zone management and/or restoration projects. Utilization of any and all rights derived under this lease by the mineral lessee, its agents, successors or assigns, shall not interfere with nor hinder the reasonable surface use by the Department of Natural Resources, its Offices or Commissions, as herein above reserved.

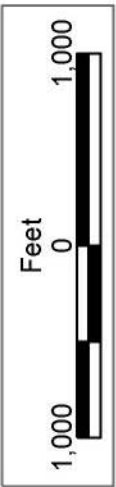
NOTE: The Department of Wildlife and Fisheries has designated certain areas in the coastal waters of the State of Louisiana as Oyster Seed Bed Areas. The exact location of those Seed Bed Areas must be obtained from the Department of Wildlife and Fisheries and any work done under a mineral lease from the State of Louisiana may necessarily be conducted in conformity with the rules and regulations promulgated by the said Department of Wildlife and Fisheries for Oyster Seed Bed Areas.

Applicant: Energy Partners, Inc.

Bidder	Cash Payment	Price/Acre	Rental	Oil	Gas	Other



P.O.B.  
X=2,376,050.50  
Y=300,379.75



**TRACT 37032 - Lafourche Parish, Louisiana**

All of the lands now or formerly constituting the beds and bottoms of all water bodies of every nature and description the title of which vests in the State of Louisiana, together with all islands arising therein and other lands formed by accretion or by reliction, where allowed by law, excepting tax adjudicated lands, and not presently under mineral lease on January 12, 2005, situated in Lafourche Parish, Louisiana, and more particularly described as follows: Beginning at the Southwest corner of State Lease No. 18100 having Coordinates of X = 2,374,163.00 and Y = 293,706.00; thence North 71 degrees 29 minutes 25 seconds East 2,668.02 feet along the South boundary of said State Lease No. 18100 to its Southeast corner, also being the Southwest corner of State Lease No. 18099 having Coordinates of X = 2,376,693.00 and Y = 294,553.00; thence North 71 degrees 29 minutes 25 seconds East 226.60 feet along the South boundary of said State Lease No. 18009 to the most Southerly Northwest corner of State Lease No. 18146 having Coordinates of X = 2,376,907.88 and Y = 294,624.94; thence South 793.34 feet along the most Western boundary of said State Lease No. 18146 to its Southwest corner having Coordinates of X = 2,376,907.88 and Y = 293,831.60; thence East 6,069.12 feet along the South boundary of said State Lease No. 18146 to a point having Coordinates of X = 2,382,977.00 and Y = 293,831.60; thence South 1,936.60 feet to a point having Coordinates of X = 2,382,977.00 and Y = 291,895.00; thence West 867.00 feet to a point on the East boundary of State Lease No. 7501, as amended, having Coordinates of X = 2,382,110.00 and Y = 291,895.00; thence along the Eastern, Northern and Western boundaries of said State Lease No. 7501 the following courses: Northwesterly, Westerly, Southwesterly, and Southerly, to a point having Coordinates of X = 2,378,250.00 and Y = 291,990.00; thence West 1,114.00 feet to a point having Coordinates of X = 2,377,136.00 and Y = 291,990.00; thence North 1,253.00 feet to a point having Coordinates of X = 2,377,136.00 and Y = 293,243.00; thence West 2,973.00 feet to a point having Coordinates of X = 2,374,163.00 and Y = 293,243.00; thence North 463.00 feet to the point of beginning, **LESS AND EXCEPT** any portion of State Lease No. 7501, as amended, which may lie within the above described tract, containing approximately **168 acres**, all as more particularly outlined on a plat on file in the Office of Mineral Resources, Department of Natural Resources. All bearings, distances and coordinates are based on Louisiana Coordinate System of 1927, (North or South Zone), where applicable.

NOTE: The above description of the Tract nominated for lease has been provided and corrected, where required, exclusively by the nomination party. Any mineral lease selected from this Tract and awarded by the Louisiana State Mineral Board shall be without warranty of any kind, either express, implied, or statutory, including, but not limited to, the implied warranties of merchantability and fitness for a particular purpose. Should the mineral lease awarded by the Louisiana State Mineral Board be subsequently modified, cancelled or abrogated due to the existence of conflicting leases, operating agreements, private claims or other future obligations or conditions which may affect all or any portion

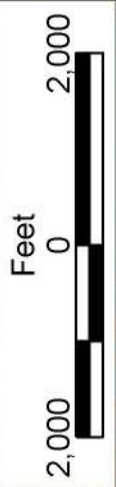
of the leased Tract, it shall not relieve the Lessee of the obligation to pay any bonus due thereon to the Louisiana State Mineral Board, nor shall the Louisiana State Mineral Board be obligated to refund any consideration paid by the Lessor prior to such modification, cancellation, or abrogation, including, but not limited to, bonuses, rentals and royalties.

NOTE: The State of Louisiana does hereby reserve, and this lease shall be subject to, the imprescriptible right of surface use in the nature of a servitude in favor of the Department of Natural Resources, including its Offices and Commissions, for the sole purpose of implementing, constructing, servicing and maintaining approved coastal zone management and/or restoration projects. Utilization of any and all rights derived under this lease by the mineral lessee, its agents, successors or assigns, shall not interfere with nor hinder the reasonable surface use by the Department of Natural Resources, its Offices or Commissions, as herein above reserved.

NOTE: The Department of Wildlife and Fisheries has designated certain areas in the coastal waters of the State of Louisiana as Oyster Seed Bed Areas. The exact location of those Seed Bed Areas must be obtained from the Department of Wildlife and Fisheries and any work done under a mineral lease from the State of Louisiana may necessarily be conducted in conformity with the rules and regulations promulgated by the said Department of Wildlife and Fisheries for Oyster Seed Bed Areas.

Applicant: Energy Partners, Inc.

Bidder	Cash Payment	Price/Acre	Rental	Oil	Gas	Other



LITTLE LAKE

JEFFERSON PARISH

LAFOURCHE PARISH

SL 2383

SL 18145

SL 18146

SL 7501

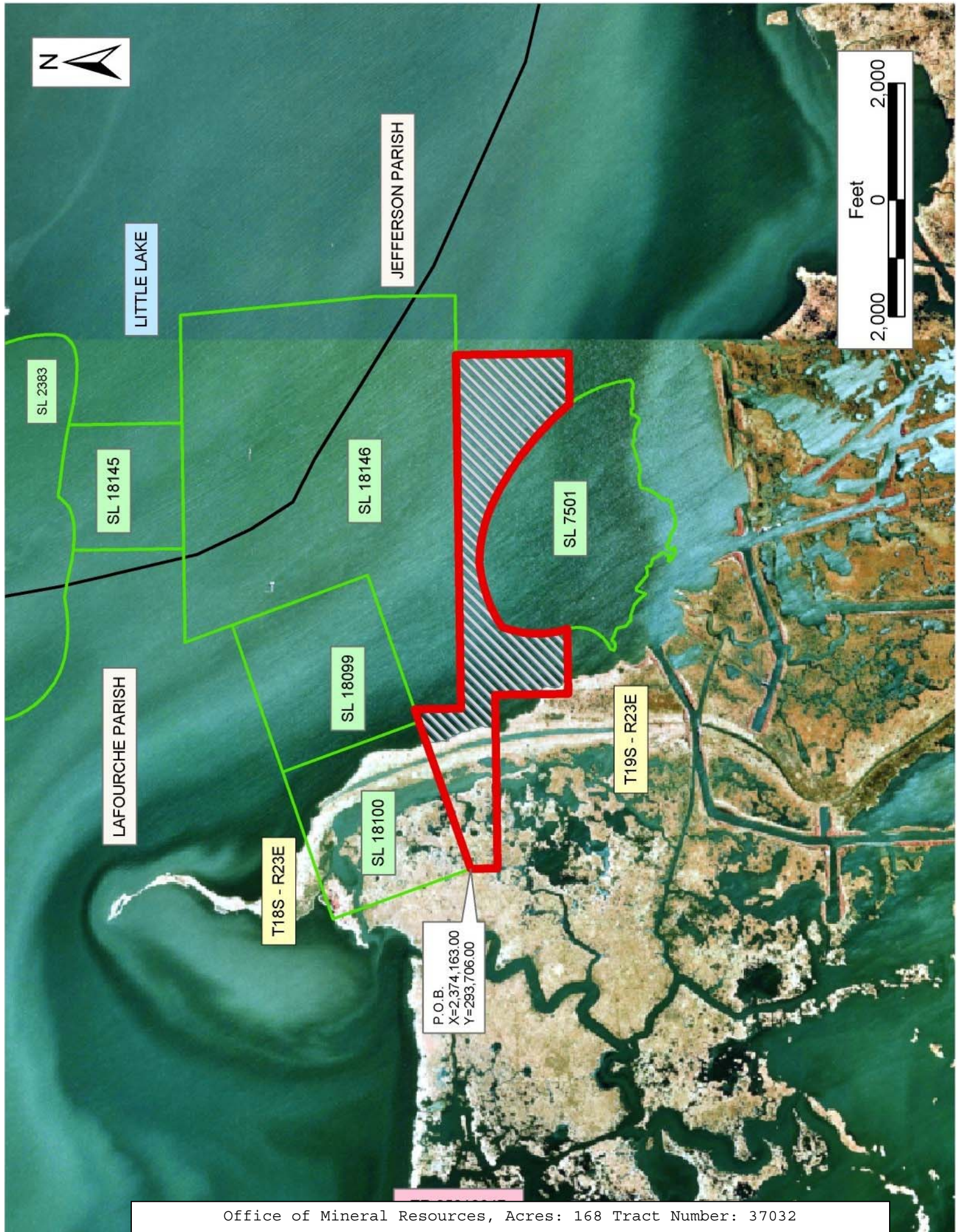
SL 18099

T19S - R23E

T18S - R23E

SL 18100

P.O.B.  
X=2,374,163.00  
Y=293,706.00



**TRACT 37033 - Lafourche Parish, Louisiana**

All of the lands now or formerly constituting the beds and bottoms of all water bodies of every nature and description the title of which vests in the State of Louisiana, together with all islands arising therein and other lands formed by accretion or by reliction, where allowed by law, excepting tax adjudicated lands, and not presently under mineral lease on January 12, 2005, situated in Lafourche Parish, Louisiana, and more particularly described as follows: Beginning at a point having Coordinates of X = 2,366,470.00 and Y = 293,243.00; thence East 10,666.00 feet to a point having Coordinates of X = 2,377,136.00 and Y = 293,243.00; thence South 1,675.00 feet to a point having Coordinates of X = 2,377,136.00 and Y = 291,568.00; thence South 50 degrees 44 minutes 39 seconds East 9,156.34 feet to a point having Coordinates of X = 2,384,226.00 and Y = 285,774.00; thence East 724.00 feet to a point having Coordinates of X = 2,384,950.00 and Y = 285,774.00; thence South 9,200.00 feet to a point having Coordinates of X = 2,384,950.00 and Y = 276,574.00; thence West 6,212.00 feet to a point having Coordinates of X = 2,378,738.00 and Y = 276,574.00; thence North 4,534.00 feet to a point having Coordinates of X = 2,378,738.00 and Y = 281,108.00; thence West 12,268.00 feet to a point having Coordinates of X = 2,366,470.00 and Y = 281,108.00; thence North 12,135.00 feet to the point of beginning, **LESS AND EXCEPT** that portion, if any, of State Lease No. 7501, that may lie within the above described tract, containing approximately **245 acres**, all as more particularly outlined on a plat on file in the Office of Mineral Resources, Department of Natural Resources. All bearings, distances and coordinates are based on Louisiana Coordinate System of 1927, (North or South Zone), where applicable.

NOTE: The above description of the Tract nominated for lease has been provided and corrected, where required, exclusively by the nomination party. Any mineral lease selected from this Tract and awarded by the Louisiana State Mineral Board shall be without warranty of any kind, either express, implied, or statutory, including, but not limited to, the implied warranties of merchantability and fitness for a particular purpose. Should the mineral lease awarded by the Louisiana State Mineral Board be subsequently modified, cancelled or abrogated due to the existence of conflicting leases, operating agreements, private claims or other future obligations or conditions which may affect all or any portion of the leased Tract, it shall not relieve the Lessee of the obligation to pay any bonus due thereon to the Louisiana State Mineral Board, nor shall the Louisiana State Mineral Board be obligated to refund any consideration paid by the Lessor prior to such modification, cancellation, or abrogation, including, but not limited to, bonuses, rentals and royalties.

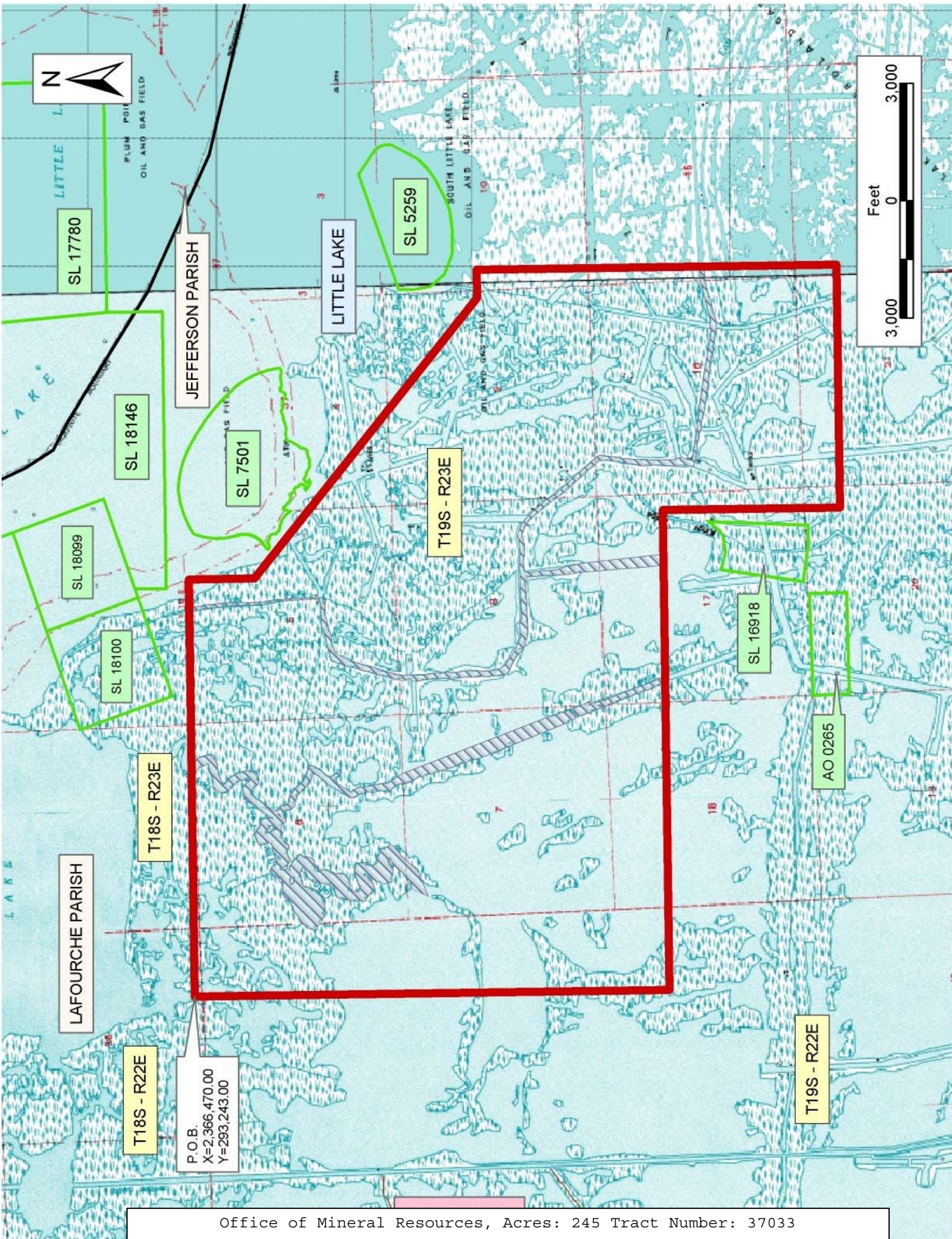
NOTE: The State of Louisiana does hereby reserve, and this lease shall be subject to, the imprescriptible right of surface use in the nature of a servitude in favor of the Department of Natural Resources, including its Offices and Commissions, for the sole purpose of implementing, constructing, servicing and maintaining approved coastal zone management

and/or restoration projects. Utilization of any and all rights derived under this lease by the mineral lessee, its agents, successors or assigns, shall not interfere with nor hinder the reasonable surface use by the Department of Natural Resources, its Offices or Commissions, as herein above reserved.

NOTE: The Department of Wildlife and Fisheries has designated certain areas in the coastal waters of the State of Louisiana as Oyster Seed Bed Areas. The exact location of those Seed Bed Areas must be obtained from the Department of Wildlife and Fisheries and any work done under a mineral lease from the State of Louisiana may necessarily be conducted in conformity with the rules and regulations promulgated by the said Department of Wildlife and Fisheries for Oyster Seed Bed Areas.

Applicant: Harper Petroleum Company, Inc.

Bidder	Cash Payment	Price/Acre	Rental	Oil	Gas	Other



SL 17780

SL 18146

SL 18099

SL 18100

T18S - R23E

T18S - R22E

P.O.B.  
X=2,366,470.00  
Y=293,243.00

JEFFERSON PARISH

LAFOURCHE PARISH

LITTLE LAKE

SL 5259

T19S - R23E

SL 16918

AO 0265

T19S - R22E



**TRACT 37034 - Terrebonne Parish, Louisiana**

All of the lands now or formerly constituting the beds and bottoms of all water bodies of every nature and description the title of which vests in the State of Louisiana, together with all islands arising therein and other lands formed by accretion or by reliction, where allowed by law, excepting tax adjudicated lands, and not presently under mineral lease on January 12, 2005, situated in Terrebonne Parish, Louisiana, and more particularly described as follows: Beginning at a point having Coordinates of X = 2,102,605.00 and Y = 239,900.00; thence North 5,200.00 feet to the Southwest corner of State Lease No. 17991 having Coordinates of X = 2,102,605.00 and Y = 245,100.00; thence East 12,315.00 feet along the South line of said State Lease No. 17991 to its Southeast corner having Coordinates of X = 2,114,920.00 and Y = 245,100.00; thence South 5,200.00 feet to a point having Coordinates of X = 2,114,920.00 and Y = 239,900.00; thence West 12,315.00 feet to the point of beginning, containing approximately **450 acres**, all as more particularly outlined on a plat on file in the Office of Mineral Resources, Department of Natural Resources. All bearings, distances and coordinates are based on Louisiana Coordinate System of 1927, (North or South Zone), where applicable.

NOTE: The above description of the Tract nominated for lease has been provided and corrected, where required, exclusively by the nomination party. Any mineral lease selected from this Tract and awarded by the Louisiana State Mineral Board shall be without warranty of any kind, either express, implied, or statutory, including, but not limited to, the implied warranties of merchantability and fitness for a particular purpose. Should the mineral lease awarded by the Louisiana State Mineral Board be subsequently modified, cancelled or abrogated due to the existence of conflicting leases, operating agreements, private claims or other future obligations or conditions which may affect all or any portion of the leased Tract, it shall not relieve the Lessee of the obligation to pay any bonus due thereon to the Louisiana State Mineral Board, nor shall the Louisiana State Mineral Board be obligated to refund any consideration paid by the Lessor prior to such modification, cancellation, or abrogation, including, but not limited to, bonuses, rentals and royalties.

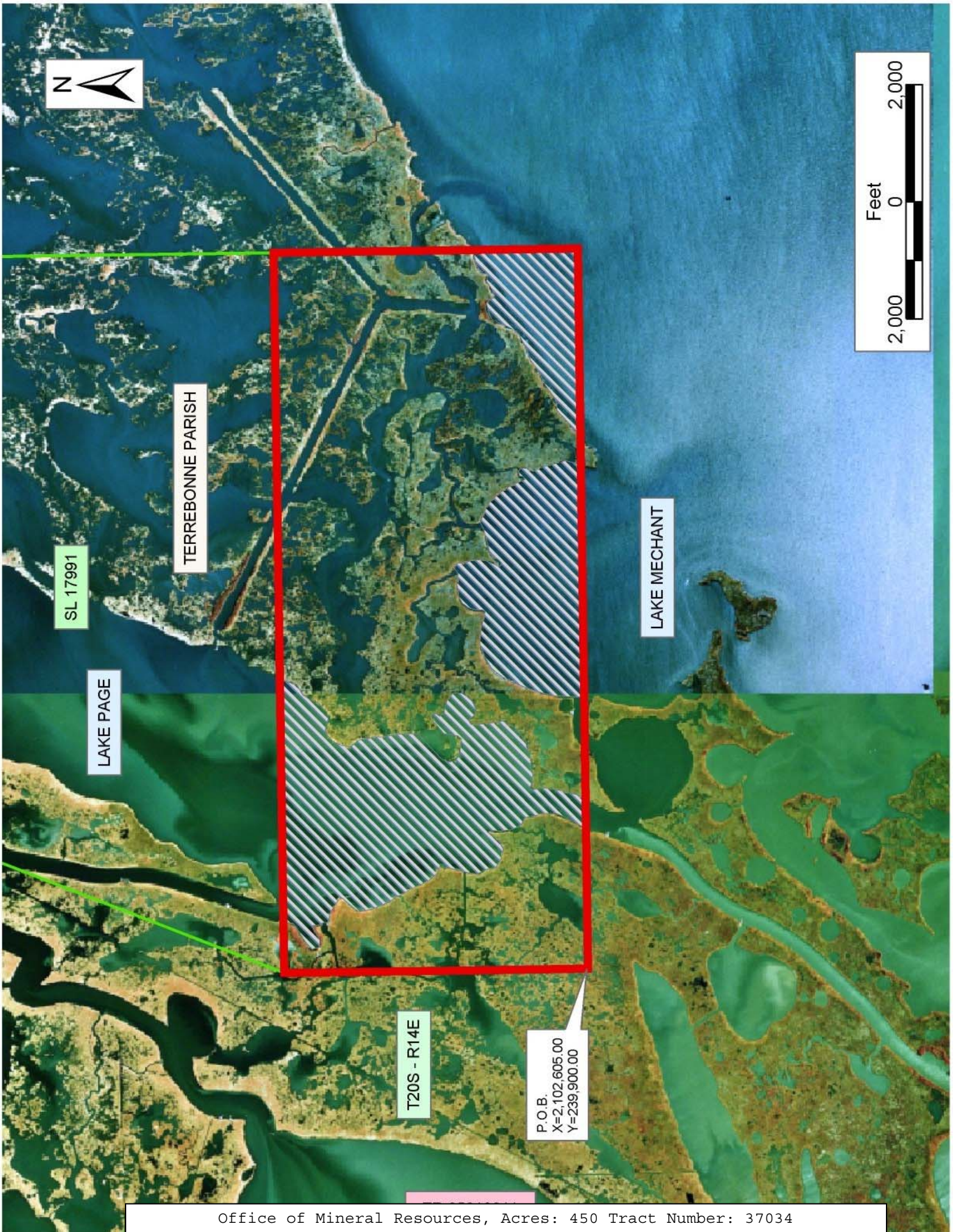
NOTE: The State of Louisiana does hereby reserve, and this lease shall be subject to, the imprescriptible right of surface use in the nature of a servitude in favor of the Department of Natural Resources, including its Offices and Commissions, for the sole purpose of implementing, constructing, servicing and maintaining approved coastal zone management and/or restoration projects. Utilization of any and all rights derived under this lease by the mineral lessee, its agents, successors or assigns, shall not interfere with nor hinder the reasonable surface use by the Department of Natural Resources, its Offices or Commissions, as herein above reserved.

NOTE: The Department of Wildlife and Fisheries has designated certain areas in the coastal waters of the State of Louisiana as Oyster Seed Bed

Areas. The exact location of those Seed Bed Areas must be obtained from the Department of Wildlife and Fisheries and any work done under a mineral lease from the State of Louisiana may necessarily be conducted in conformity with the rules and regulations promulgated by the said Department of Wildlife and Fisheries for Oyster Seed Bed Areas.

Applicant: Icosahedron Exploration And Development

Bidder	Cash Payment	Price/Acre	Rental	Oil	Gas	Other



**TRACT 37035 - Terrebonne Parish, Louisiana**

All of the lands now or formerly constituting the beds and bottoms of all water bodies of every nature and description the title of which vests in the State of Louisiana, together with all islands arising therein and other lands formed by accretion or by reliction, where allowed by law, excepting tax adjudicated lands, and not presently under mineral lease on January 12, 2005, situated in Terrebonne Parish, Louisiana, and more particularly described as follows: Beginning at a point having Coordinates of X = 2,102,605.00 and Y = 239,900.00; thence East 12,315.00 feet to a point having Coordinates of X = 2,114,920.00 and Y = 239,900.00; thence South 5,200.00 feet to a point having Coordinates of X = 2,114,920.00 and Y = 234,700.00; thence West 12,315.00 feet to a point having Coordinates of X = 2,102,605.00 and Y = 234,700.00; thence North 5,200.00 feet to the point of beginning, containing approximately **1,060 acres**, all as more particularly outlined on a plat on file in the Office of Mineral Resources, Department of Natural Resources. All bearings, distances and coordinates are based on Louisiana Coordinate System of 1927, (North or South Zone), where applicable.

NOTE: The above description of the Tract nominated for lease has been provided and corrected, where required, exclusively by the nomination party. Any mineral lease selected from this Tract and awarded by the Louisiana State Mineral Board shall be without warranty of any kind, either express, implied, or statutory, including, but not limited to, the implied warranties of merchantability and fitness for a particular purpose. Should the mineral lease awarded by the Louisiana State Mineral Board be subsequently modified, cancelled or abrogated due to the existence of conflicting leases, operating agreements, private claims or other future obligations or conditions which may affect all or any portion of the leased Tract, it shall not relieve the Lessee of the obligation to pay any bonus due thereon to the Louisiana State Mineral Board, nor shall the Louisiana State Mineral Board be obligated to refund any consideration paid by the Lessor prior to such modification, cancellation, or abrogation, including, but not limited to, bonuses, rentals and royalties.

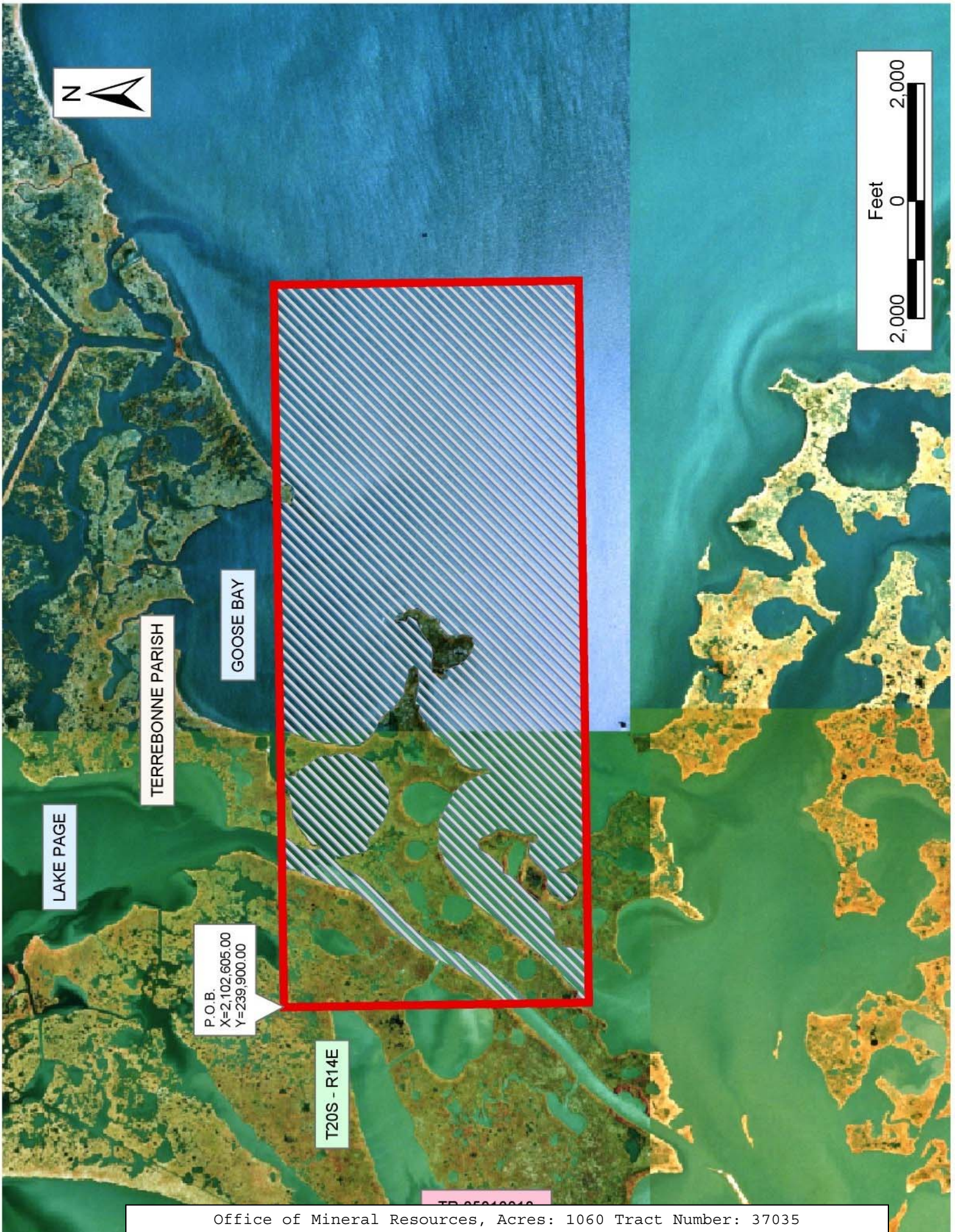
NOTE: The State of Louisiana does hereby reserve, and this lease shall be subject to, the imprescriptible right of surface use in the nature of a servitude in favor of the Department of Natural Resources, including its Offices and Commissions, for the sole purpose of implementing, constructing, servicing and maintaining approved coastal zone management and/or restoration projects. Utilization of any and all rights derived under this lease by the mineral lessee, its agents, successors or assigns, shall not interfere with nor hinder the reasonable surface use by the Department of Natural Resources, its Offices or Commissions, as herein above reserved.

NOTE: The Department of Wildlife and Fisheries has designated certain areas in the coastal waters of the State of Louisiana as Oyster Seed Bed Areas. The exact location of those Seed Bed Areas must be obtained from

the Department of Wildlife and Fisheries and any work done under a mineral lease from the State of Louisiana may necessarily be conducted in conformity with the rules and regulations promulgated by the said Department of Wildlife and Fisheries for Oyster Seed Bed Areas.

Applicant: Icosahedron Exploration And Development

Bidder	Cash Payment	Price/Acre	Rental	Oil	Gas	Other



**TRACT 37036 - Terrebonne Parish, Louisiana**

All of the lands now or formerly constituting the beds and bottoms of all water bodies of every nature and description the title of which vests in the State of Louisiana, together with all islands arising therein and other lands formed by accretion or by reliction, where allowed by law, excepting tax adjudicated lands, and not presently under mineral lease on January 12, 2005, situated in Terrebonne Parish, Louisiana, and more particularly described as follows: Beginning at a point having Coordinates of X = 2,102,605.00 and Y = 234,700.00; thence East 12,315.00 feet to a point having Coordinates of X = 2,114,920.00 and Y = 234,700.00; thence South 5,200.00 feet to a point having Coordinates of X = 2,114,920.00 and Y = 229,500.00; thence West 12,315.00 feet to a point having Coordinates of X = 2,102,605.00 and Y = 229,500.00; thence North 5,200.00 feet to the point of beginning, containing approximately **1,130 acres**, all as more particularly outlined on a plat on file in the Office of Mineral Resources, Department of Natural Resources. All bearings, distances and coordinates are based on Louisiana Coordinate System of 1927, (North or South Zone), where applicable.

NOTE: The above description of the Tract nominated for lease has been provided and corrected, where required, exclusively by the nomination party. Any mineral lease selected from this Tract and awarded by the Louisiana State Mineral Board shall be without warranty of any kind, either express, implied, or statutory, including, but not limited to, the implied warranties of merchantability and fitness for a particular purpose. Should the mineral lease awarded by the Louisiana State Mineral Board be subsequently modified, cancelled or abrogated due to the existence of conflicting leases, operating agreements, private claims or other future obligations or conditions which may affect all or any portion of the leased Tract, it shall not relieve the Lessee of the obligation to pay any bonus due thereon to the Louisiana State Mineral Board, nor shall the Louisiana State Mineral Board be obligated to refund any consideration paid by the Lessor prior to such modification, cancellation, or abrogation, including, but not limited to, bonuses, rentals and royalties.

NOTE: The State of Louisiana does hereby reserve, and this lease shall be subject to, the imprescriptible right of surface use in the nature of a servitude in favor of the Department of Natural Resources, including its Offices and Commissions, for the sole purpose of implementing, constructing, servicing and maintaining approved coastal zone management and/or restoration projects. Utilization of any and all rights derived under this lease by the mineral lessee, its agents, successors or assigns, shall not interfere with nor hinder the reasonable surface use by the Department of Natural Resources, its Offices or Commissions, as herein above reserved.

NOTE: The Department of Wildlife and Fisheries has designated certain areas in the coastal waters of the State of Louisiana as Oyster Seed Bed Areas. The exact location of those Seed Bed Areas must be obtained from

the Department of Wildlife and Fisheries and any work done under a mineral lease from the State of Louisiana may necessarily be conducted in conformity with the rules and regulations promulgated by the said Department of Wildlife and Fisheries for Oyster Seed Bed Areas.

Applicant: Icosahedron Exploration And Development

Bidder	Cash Payment	Price/Acre	Rental	Oil	Gas	Other

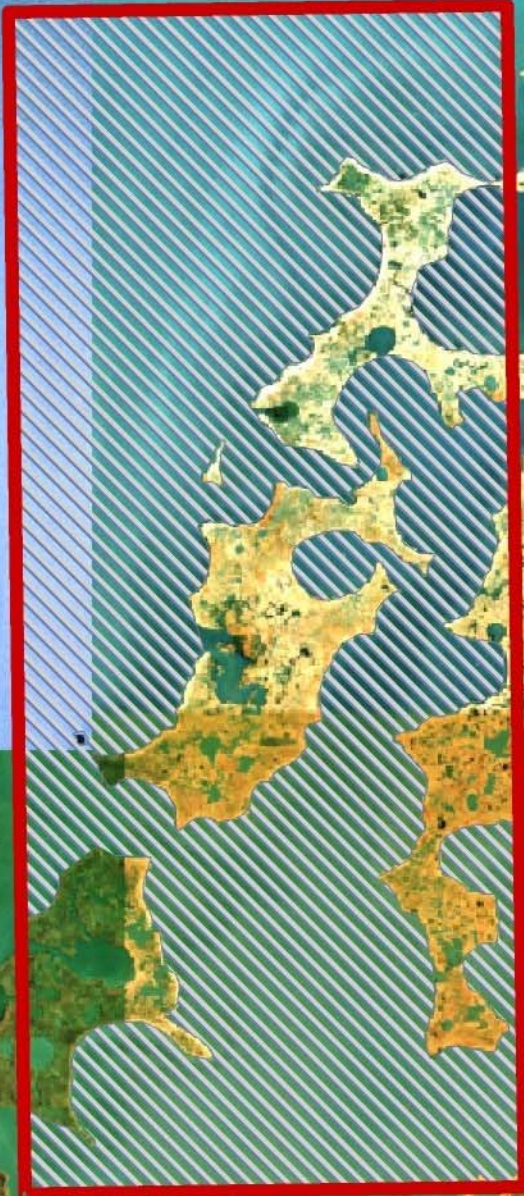




LAKE MECHANT



TERREBONNE PARISH



T20S - R14E

P.O.B.  
X=2,102,605.00  
Y=234,700.00