

TRACT 37009 - Bossier and Caddo Parishes, Louisiana

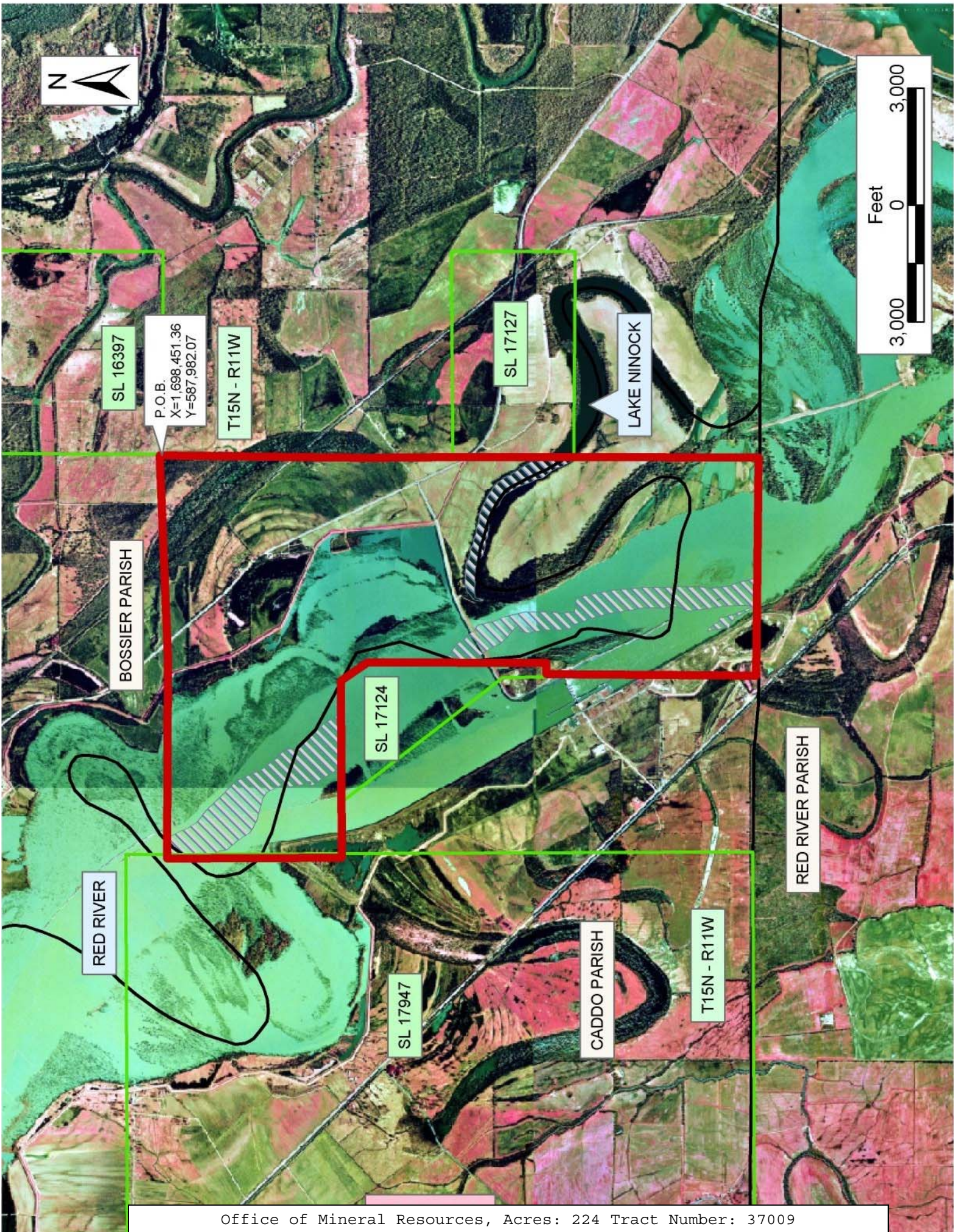
All of the lands now or formerly constituting the beds and bottoms of all water bodies of every nature and description the title of which vests in the State of Louisiana, together with all islands arising therein and other lands formed by accretion or by reliction, where allowed by law, excepting tax adjudicated lands, and not presently under mineral lease on January 12, 2005, situated in Bossier and Caddo Parishes, Louisiana, and more particularly described as follows: Beginning at a point having Coordinates of X = 1,698,451.36 and Y = 587,982.07; thence South 00 degrees 56 minutes 48 seconds West 5,326.86 feet to the approximate Northwest corner of Unit CV RA SUJ, Order No. 691-B, having Coordinates of X = 1,698,363.35 and Y = 582,655.94; thence South 00 degrees 20 minutes 53 seconds East 2,203.33 feet along the West boundary of Unit CV RA SUJ, Order No. 691-B, to the Northwest corner of State Lease No. 17127, having Coordinates of X = 1,698,376.73 and Y = 580,452.65; thence South 00 degrees 22 minutes 36 seconds West 3,101.19 feet along the West boundary of State Lease No. 17127, to its Southwest corner having Coordinates of X = 1,698,356.34 and Y = 577,351.53; thence South 00 degrees 22 minutes 36 seconds West 4,745.79 feet to a point having Coordinates of X = 1,698,325.14 and Y = 572,605.84; thence North 89 degrees 03 minutes 33 seconds West approximately 5,609 feet to the Southeast corner of Unit CV RA SUI, Order No. 1145; thence North 00 degrees 44 minutes 36 seconds East 5,378.20 feet along the East boundary of Unit CV RA SUI, Order No. 1145, to its Northeast corner; thence continue along said line to a point on the South boundary of State Lease No. 17124, having Coordinates of X = 1,692,786.75 and Y = 578,075.70; thence East 293.99 feet along the South boundary of State Lease No. 17124, to its Southeast corner having Coordinates of X = 1,693,080.74 and Y = 578,075.70; thence North 00 degrees 22 minutes 34 seconds East 4,597.53 feet along the East boundary of State Lease No. 17124, to a point having Coordinates of X = 1,693,110.92 and Y = 582,673.13; thence North 34 degrees 29 minutes 28 seconds West 828.15 feet along the boundary of State Lease No. 17124, to a point having Coordinates of X = 1,692,641.96 and Y = 583,355.70; thence West 3,121.77 feet along the North boundary of State Lease No. 17124, to its Northwest corner having Coordinates of X = 1,689,520.69 and Y = 583,355.70; thence West 1,793.63 feet to a point having Coordinates of X = 1,688,200.00 and Y = 583,355.70; thence North 4,482.03 feet to a point having Coordinates of X = 1,688,200.00 and Y = 587,837.73; thence South 89 degrees 34 minutes 07 seconds East 4,967.60 feet to a point having Coordinates of X = 1,693,273.12 and Y = 587,798.74; thence North 87 degrees 58 minutes 20 seconds East 5,181.48 feet to the point of beginning, containing approximately **224 acres**, all as more particularly outlined on a plat on file in the Office of Mineral Resources, Department of Natural Resources. All bearings, distances and coordinates are based on Louisiana Coordinate System of 1927, (North or South Zone), where applicable.

NOTE: The above description of the Tract nominated for lease has been provided and corrected, where required, exclusively by the nomination

party. Any mineral lease selected from this Tract and awarded by the Louisiana State Mineral Board shall be without warranty of any kind, either express, implied, or statutory, including, but not limited to, the implied warranties of merchantability and fitness for a particular purpose. Should the mineral lease awarded by the Louisiana State Mineral Board be subsequently modified, cancelled or abrogated due to the existence of conflicting leases, operating agreements, private claims or other future obligations or conditions which may affect all or any portion of the leased Tract, it shall not relieve the Lessee of the obligation to pay any bonus due thereon to the Louisiana State Mineral Board, nor shall the Louisiana State Mineral Board be obligated to refund any consideration paid by the Lessor prior to such modification, cancellation, or abrogation, including, but not limited to, bonuses, rentals and royalties.

Applicant: Midnite Energy Inc

Bidder	Cash Payment	Price/Acre	Rental	Oil	Gas	Other



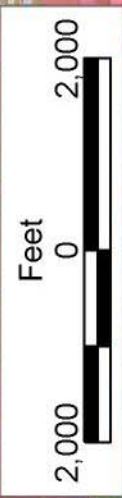
TRACT 37010 - Evangeline Parish, Louisiana

All of the lands now or formerly constituting the beds and bottoms of all water bodies of every nature and description the title of which vests in the State of Louisiana, together with all islands arising therein and other lands formed by accretion or by reliction, where allowed by law, excepting tax adjudicated lands, and not presently under mineral lease on January 12, 2005, situated in Evangeline Parish, Louisiana, and more particularly described as follows: Beginning at a point having Coordinates of X = 1,681,190.00 and Y = 708,740.00; thence North 10,746.00 feet to a point having Coordinates of X = 1,681,190.00 and Y = 719,486.00; thence East 10,770.00 feet to a point having Coordinates of X = 1,691,960.00 and Y = 719,486.00; thence South 10,746.00 feet to a point having Coordinates of X = 1,691,960.00 and Y = 708,740.00; thence West 10,770.00 feet to the point of beginning, containing approximately **36 acres**, all as more particularly outlined on a plat on file in the Office of Mineral Resources, Department of Natural Resources. All bearings, distances and coordinates are based on Louisiana Coordinate System of 1927, (North or South Zone), where applicable.

NOTE: The above description of the Tract nominated for lease has been provided and corrected, where required, exclusively by the nomination party. Any mineral lease selected from this Tract and awarded by the Louisiana State Mineral Board shall be without warranty of any kind, either express, implied, or statutory, including, but not limited to, the implied warranties of merchantability and fitness for a particular purpose. Should the mineral lease awarded by the Louisiana State Mineral Board be subsequently modified, cancelled or abrogated due to the existence of conflicting leases, operating agreements, private claims or other future obligations or conditions which may affect all or any portion of the leased Tract, it shall not relieve the Lessee of the obligation to pay any bonus due thereon to the Louisiana State Mineral Board, nor shall the Louisiana State Mineral Board be obligated to refund any consideration paid by the Lessor prior to such modification, cancellation, or abrogation, including, but not limited to, bonuses, rentals and royalties.

Applicant: Louisiana Land & Abstract Company, Inc.

Bidder	Cash Payment	Price/Acre	Rental	Oil	Gas	Other



EVANGELINE PARISH

T5S - R1E

COULEE DE MANUEL

BAYOU DES CANNES

P.O.B.
X=1,681,190.00
Y=708,740.00

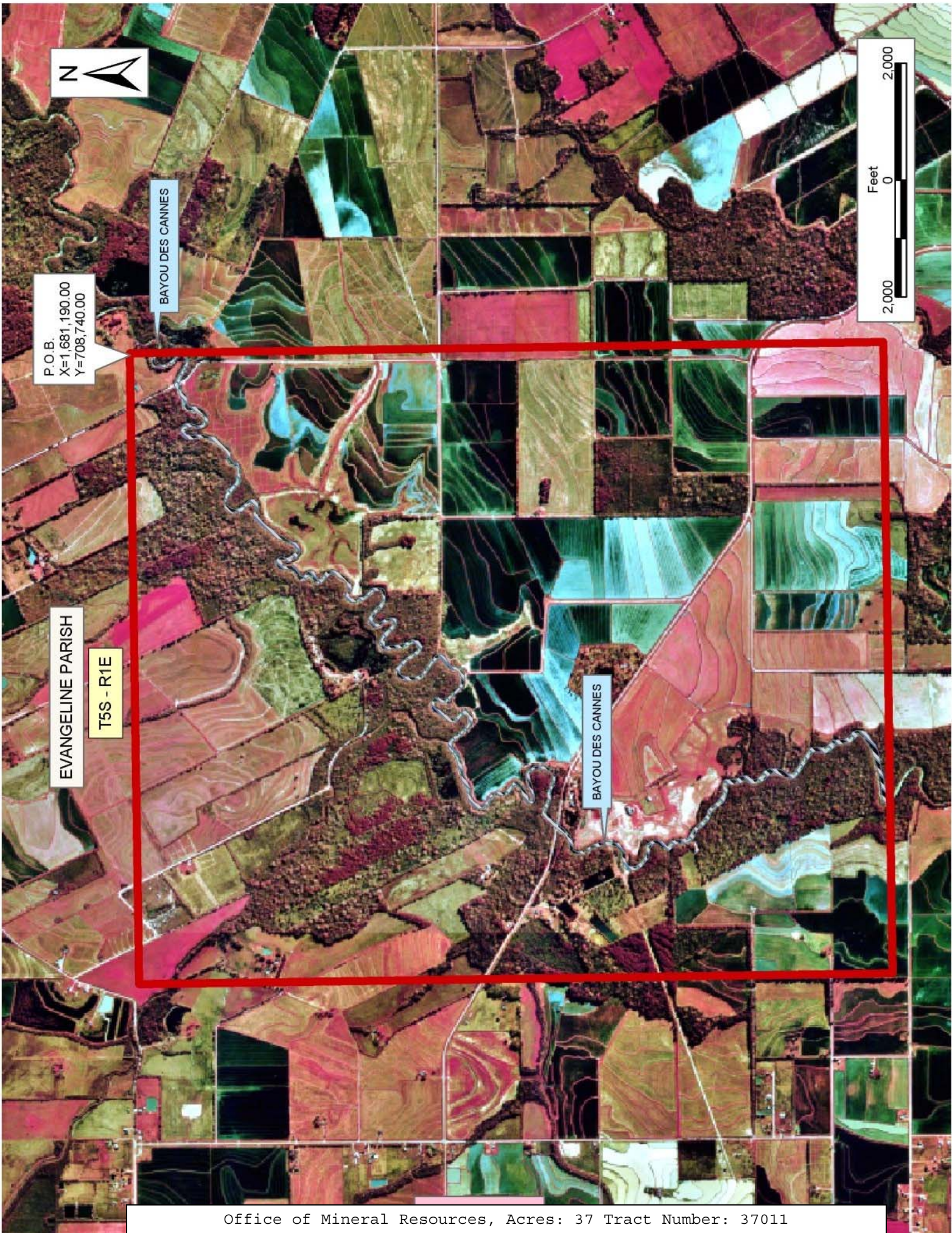
TRACT 37011 - Evangeline Parish, Louisiana

All of the lands now or formerly constituting the beds and bottoms of all water bodies of every nature and description the title of which vests in the State of Louisiana, together with all islands arising therein and other lands formed by accretion or by reliction, where allowed by law, excepting tax adjudicated lands, and not presently under mineral lease on January 12, 2005, situated in Evangeline Parish, Louisiana, and more particularly described as follows: Beginning at a point having Coordinates of X = 1,681,190.00 and Y = 708,740.00; thence South 12,890.00 feet to a point having Coordinates of X = 1,681,190.00 and Y = 695,850.00; thence West 10,800.00 feet to a point having Coordinates of X = 1,670,390.00 and Y = 695,850.00; thence North 12,890.00 feet to a point having Coordinates of X = 1,670,390.00 and Y = 708,740.00; thence East 10,800.00 feet to the point of beginning, containing approximately **37 acres**, all as more particularly outlined on a plat on file in the Office of Mineral Resources, Department of Natural Resources. All bearings, distances and coordinates are based on Louisiana Coordinate System of 1927, (North or South Zone), where applicable.

NOTE: The above description of the Tract nominated for lease has been provided and corrected, where required, exclusively by the nomination party. Any mineral lease selected from this Tract and awarded by the Louisiana State Mineral Board shall be without warranty of any kind, either express, implied, or statutory, including, but not limited to, the implied warranties of merchantability and fitness for a particular purpose. Should the mineral lease awarded by the Louisiana State Mineral Board be subsequently modified, cancelled or abrogated due to the existence of conflicting leases, operating agreements, private claims or other future obligations or conditions which may affect all or any portion of the leased Tract, it shall not relieve the Lessee of the obligation to pay any bonus due thereon to the Louisiana State Mineral Board, nor shall the Louisiana State Mineral Board be obligated to refund any consideration paid by the Lessor prior to such modification, cancellation, or abrogation, including, but not limited to, bonuses, rentals and royalties.

Applicant: Louisiana Land & Abstract Company, Inc.

Bidder	Cash Payment	Price/Acre	Rental	Oil	Gas	Other



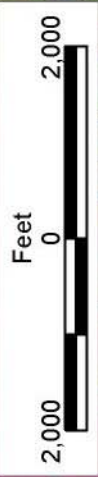
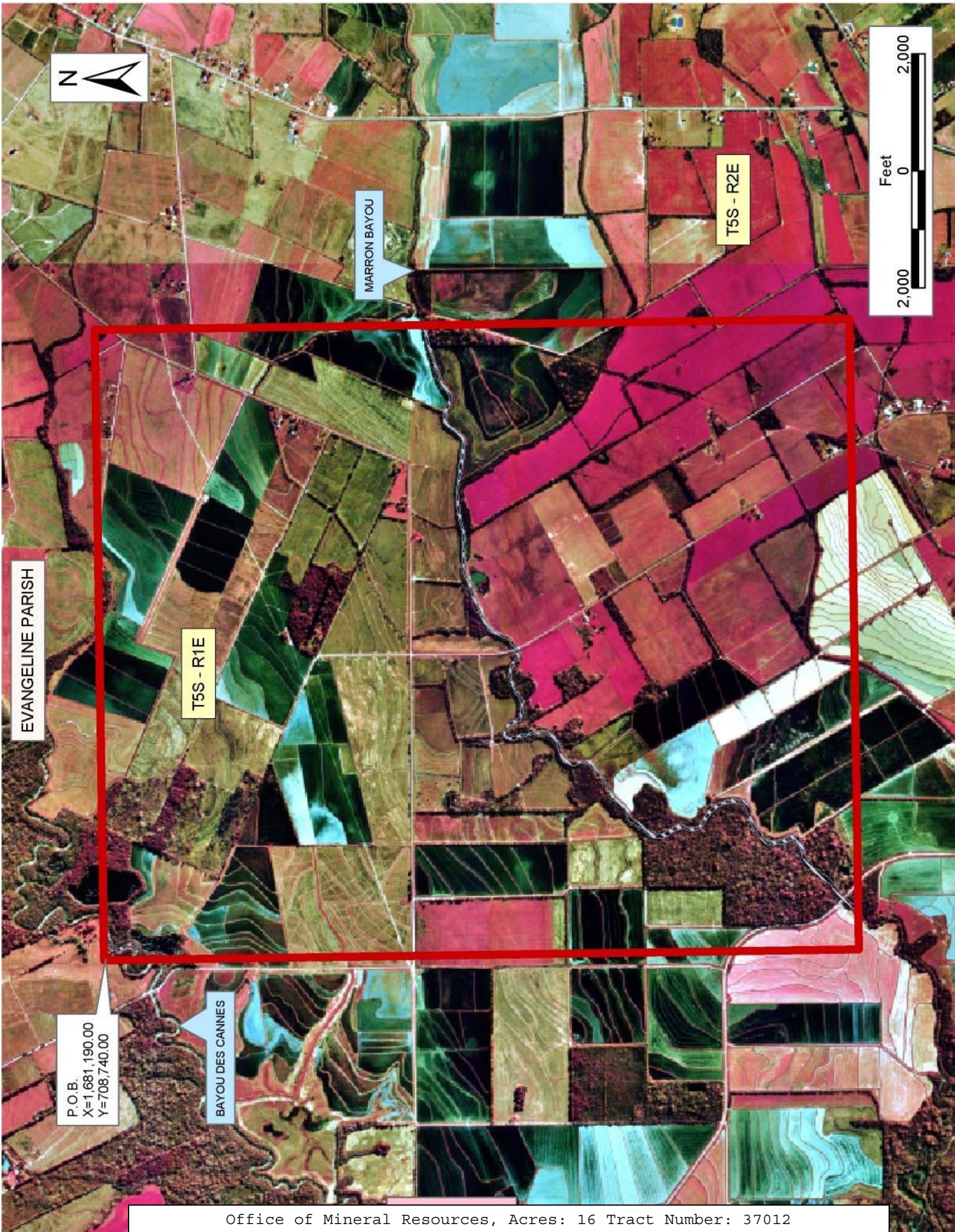
TRACT 37012 - Evangeline Parish, Louisiana

All of the lands now or formerly constituting the beds and bottoms of all water bodies of every nature and description the title of which vests in the State of Louisiana, together with all islands arising therein and other lands formed by accretion or by reliction, where allowed by law, excepting tax adjudicated lands, and not presently under mineral lease on January 12, 2005, situated in Evangeline Parish, Louisiana, and more particularly described as follows: Beginning at a point having Coordinates of X = 1,681,190.00 and Y = 708,740.00; thence East 10,770.00 feet to a point having Coordinates of X = 1,691,960.00 and Y = 708,740.00; thence South 12,890.00 feet to a point having Coordinates of X = 1,691,960.00 and Y = 695,850.00; thence West 10,770.00 feet to a point having Coordinates of X = 1,681,190.00 and Y = 695,850.00; thence North 12,890.00 feet to the point of beginning, containing approximately **16 acres**, all as more particularly outlined on a plat on file in the Office of Mineral Resources, Department of Natural Resources. All bearings, distances and coordinates are based on Louisiana Coordinate System of 1927, (North or South Zone), where applicable.

NOTE: The above description of the Tract nominated for lease has been provided and corrected, where required, exclusively by the nomination party. Any mineral lease selected from this Tract and awarded by the Louisiana State Mineral Board shall be without warranty of any kind, either express, implied, or statutory, including, but not limited to, the implied warranties of merchantability and fitness for a particular purpose. Should the mineral lease awarded by the Louisiana State Mineral Board be subsequently modified, cancelled or abrogated due to the existence of conflicting leases, operating agreements, private claims or other future obligations or conditions which may affect all or any portion of the leased Tract, it shall not relieve the Lessee of the obligation to pay any bonus due thereon to the Louisiana State Mineral Board, nor shall the Louisiana State Mineral Board be obligated to refund any consideration paid by the Lessor prior to such modification, cancellation, or abrogation, including, but not limited to, bonuses, rentals and royalties.

Applicant: Louisiana Land & Abstract Company, Inc.

Bidder	Cash Payment	Price/Acre	Rental	Oil	Gas	Other



EVANGELINE PARISH

T5S - R1E

MARRON BAYOU

T5S - R2E

P.O.B.
X=1,681,190.00
Y=708,740.00

BAYOU DES CANNES

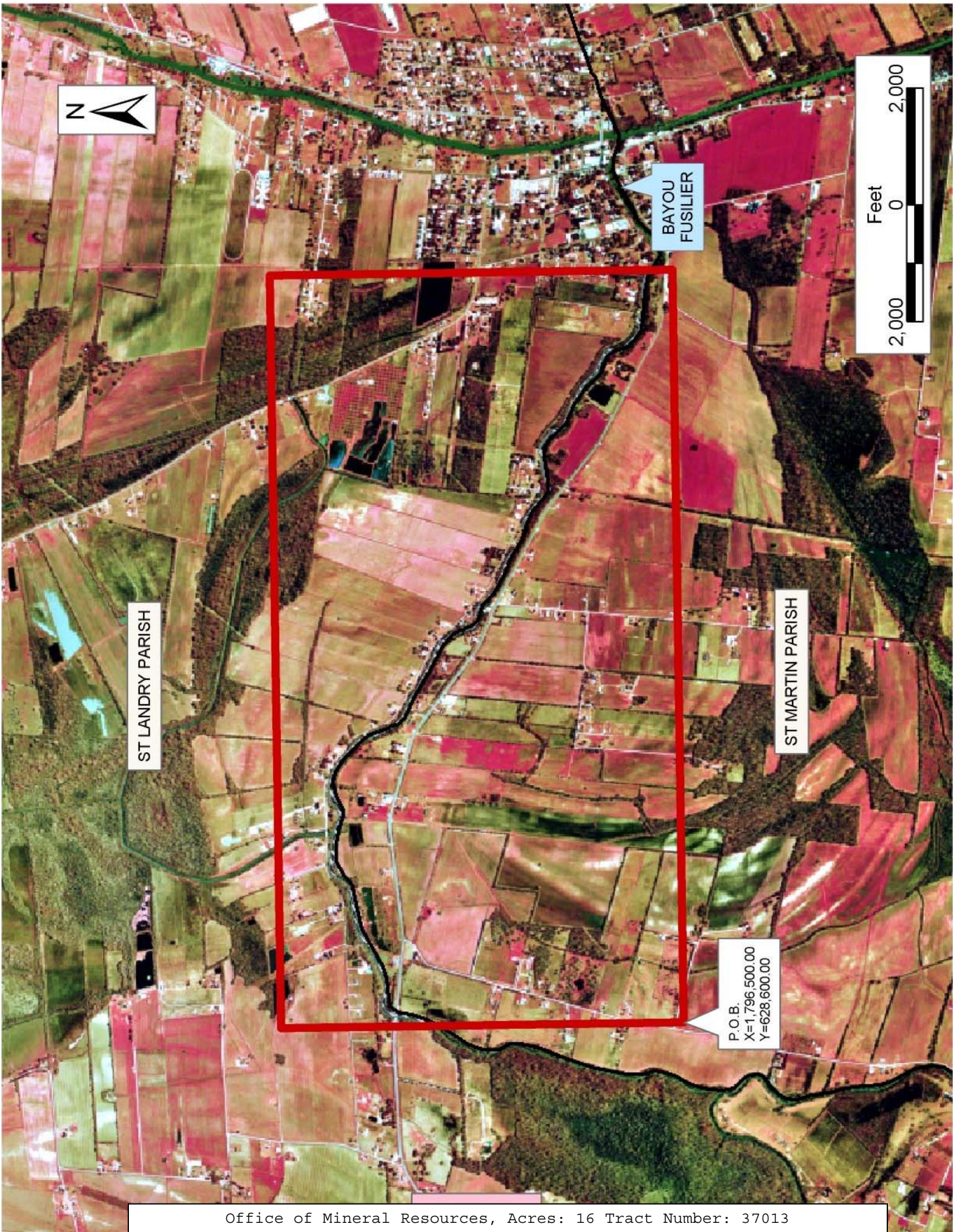
TRACT 37013 - St. Landry and St. Martin Parishes, Louisiana

All of the lands now or formerly constituting the beds and bottoms of all water bodies of every nature and description the title of which vests in the State of Louisiana, together with all islands arising therein and other lands formed by accretion or by reliction, where allowed by law, excepting tax adjudicated lands, and not presently under mineral lease on January 12, 2005, situated in St. Landry and St. Martin Parishes, Louisiana, and more particularly described as follows: Beginning at a point having Coordinates of X = 1,796,500.00 and Y = 628,600.00; thence North 6,900.00 feet to a point having Coordinates of X = 1,796,500.00 and Y = 635,500.00; thence East 12,900.00 feet to a point having Coordinates of X = 1,809,400.00 and Y = 635,500.00; thence South 6,900.00 feet to a point having Coordinates of X = 1,809,400.00 and Y = 628,600.00; thence West 12,900.00 feet to the point of beginning, containing approximately **16 acres**, all as more particularly outlined on a plat on file in the Office of Mineral Resources, Department of Natural Resources. All bearings, distances and coordinates are based on Louisiana Coordinate System of 1927, (North or South Zone), where applicable.

NOTE: The above description of the Tract nominated for lease has been provided and corrected, where required, exclusively by the nomination party. Any mineral lease selected from this Tract and awarded by the Louisiana State Mineral Board shall be without warranty of any kind, either express, implied, or statutory, including, but not limited to, the implied warranties of merchantability and fitness for a particular purpose. Should the mineral lease awarded by the Louisiana State Mineral Board be subsequently modified, cancelled or abrogated due to the existence of conflicting leases, operating agreements, private claims or other future obligations or conditions which may affect all or any portion of the leased Tract, it shall not relieve the Lessee of the obligation to pay any bonus due thereon to the Louisiana State Mineral Board, nor shall the Louisiana State Mineral Board be obligated to refund any consideration paid by the Lessor prior to such modification, cancellation, or abrogation, including, but not limited to, bonuses, rentals and royalties.

Applicant: Jil Exploration, Inc.

Bidder	Cash Payment	Price/Acre	Rental	Oil	Gas	Other



TRACT 37014 - Calcasieu Parish, Louisiana

All of the lands now or formerly constituting the beds and bottoms of all water bodies of every nature and description the title of which vests in the State of Louisiana, together with all islands arising therein and other lands formed by accretion or by reliction, where allowed by law, excepting tax adjudicated lands, and not presently under mineral lease on January 12, 2005, situated in Calcasieu Parish, Louisiana, and more particularly described as follows: Beginning at a point having Coordinates of X = 1,347,400.00 and Y = 599,800.00; thence North 5,500.00 feet to a point having Coordinates of X = 1,347,400.00 and Y = 605,300.00; thence East 5,400.00 feet to a point having Coordinates of X = 1,352,800.00 and Y = 605,300.00; thence South 5,500.00 feet to a point having Coordinates of X = 1,352,800.00 and Y = 599,800.00; thence West 5,400.00 feet to the point of beginning, containing approximately **17 acres**, all as more particularly outlined on a plat on file in the Office of Mineral Resources, Department of Natural Resources. All bearings, distances and coordinates are based on Louisiana Coordinate System of 1927, (North or South Zone), where applicable.

NOTE: The above description of the Tract nominated for lease has been provided and corrected, where required, exclusively by the nomination party. Any mineral lease selected from this Tract and awarded by the Louisiana State Mineral Board shall be without warranty of any kind, either express, implied, or statutory, including, but not limited to, the implied warranties of merchantability and fitness for a particular purpose. Should the mineral lease awarded by the Louisiana State Mineral Board be subsequently modified, cancelled or abrogated due to the existence of conflicting leases, operating agreements, private claims or other future obligations or conditions which may affect all or any portion of the leased Tract, it shall not relieve the Lessee of the obligation to pay any bonus due thereon to the Louisiana State Mineral Board, nor shall the Louisiana State Mineral Board be obligated to refund any consideration paid by the Lessor prior to such modification, cancellation, or abrogation, including, but not limited to, bonuses, rentals and royalties.

Applicant: Beta Land Services, L.L.C.

Bidder	Cash Payment	Price/Acre	Rental	Oil	Gas	Other



HOUSTON RIVER



CALCASIEU PARISH



T8S - R10W

T9S - R10W

P.O.B.
X=1,347,400.00
Y=599,800.00

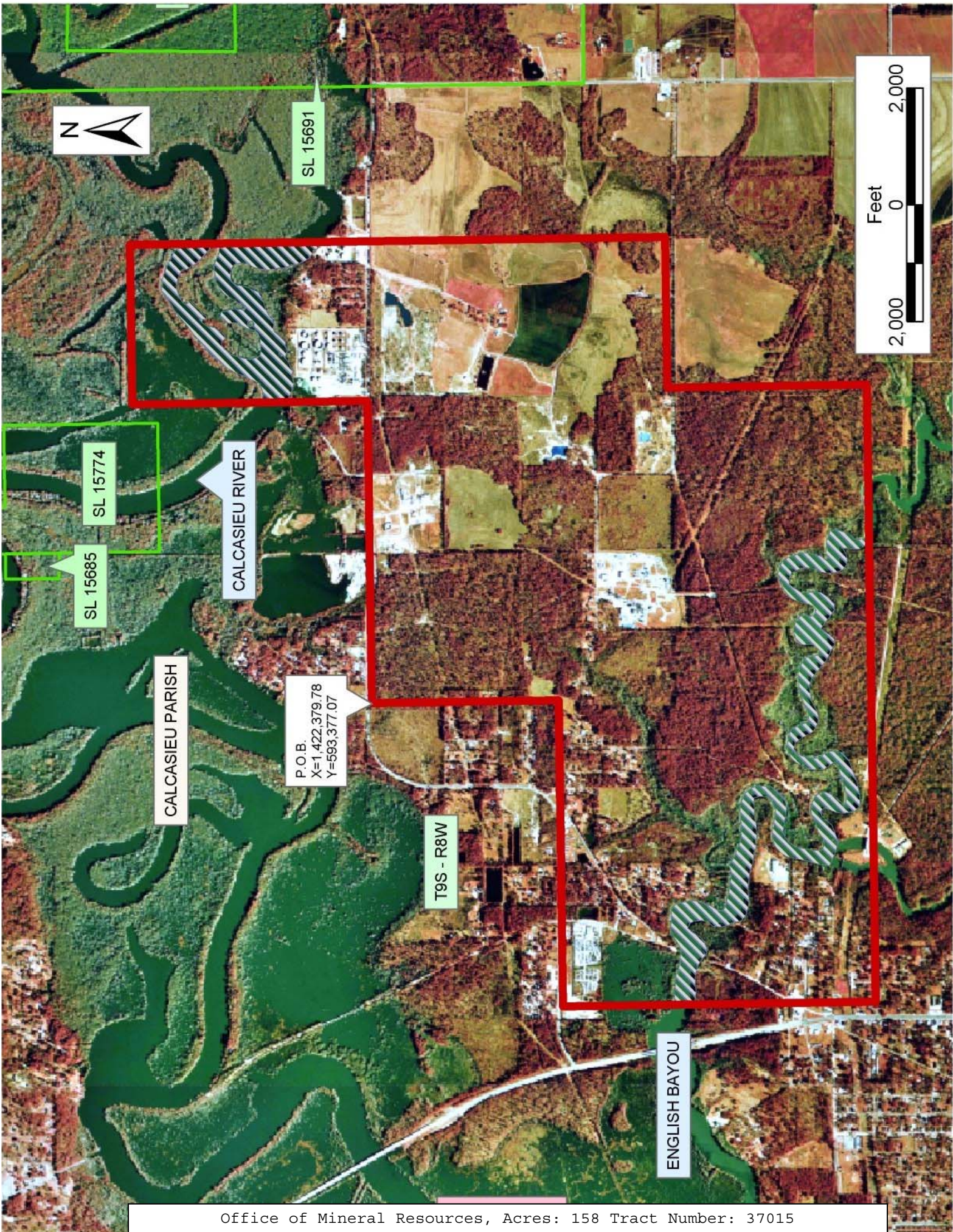
TRACT 37015 - Calcasieu Parish, Louisiana

All of the lands now or formerly constituting the beds and bottoms of all water bodies of every nature and description the title of which vests in the State of Louisiana, together with all islands arising therein and other lands formed by accretion or by reliction, where allowed by law, excepting tax adjudicated lands, and not presently under mineral lease on January 12, 2005, situated in Calcasieu Parish, Louisiana, and more particularly described as follows: Beginning at a point having Coordinates of X = 1,422,379.78 and Y = 593,377.07; thence East 5,179.74 feet to a point having Coordinates of X = 1,427,559.52 and Y = 593,377.07; thence North 4,032.30 feet to a point having Coordinates of X = 1,427,559.52 and Y = 597,409.37; thence East 2,732.51 feet to a point having Coordinates of X = 1,430,292.03 and Y = 597,409.37; thence South 9,170.82 feet to a point having Coordinates of X = 1,430,292.03 and Y = 588,238.55; thence West 2,577.88 feet to a point having Coordinates of X = 1,427,714.15 and Y = 588,238.55; thence South 3,413.78 feet to a point having Coordinates of X = 1,427,714.15 and Y = 584,824.77; thence West 10,573.48 feet to a point having Coordinates of X = 1,417,140.67 and Y = 584,824.77; thence North 5,352.62 feet to a point having Coordinates of X = 1,417,140.67 and Y = 590,177.39; thence East 5,239.11 feet to a point having Coordinates of X = 1,422,379.78 and Y = 590,177.39; thence North 3,199.68 feet to the point of beginning, containing approximately **158 acres**, all as more particularly outlined on a plat on file in the Office of Mineral Resources, Department of Natural Resources. All bearings, distances and coordinates are based on Louisiana Coordinate System of 1927, (North or South Zone), where applicable.

NOTE: The above description of the Tract nominated for lease has been provided and corrected, where required, exclusively by the nomination party. Any mineral lease selected from this Tract and awarded by the Louisiana State Mineral Board shall be without warranty of any kind, either express, implied, or statutory, including, but not limited to, the implied warranties of merchantability and fitness for a particular purpose. Should the mineral lease awarded by the Louisiana State Mineral Board be subsequently modified, cancelled or abrogated due to the existence of conflicting leases, operating agreements, private claims or other future obligations or conditions which may affect all or any portion of the leased Tract, it shall not relieve the Lessee of the obligation to pay any bonus due thereon to the Louisiana State Mineral Board, nor shall the Louisiana State Mineral Board be obligated to refund any consideration paid by the Lessor prior to such modification, cancellation, or abrogation, including, but not limited to, bonuses, rentals and royalties.

Applicant: Leslie M. Cooper

Bidder	Cash Payment	Price/Acre	Rental	Oil	Gas	Other



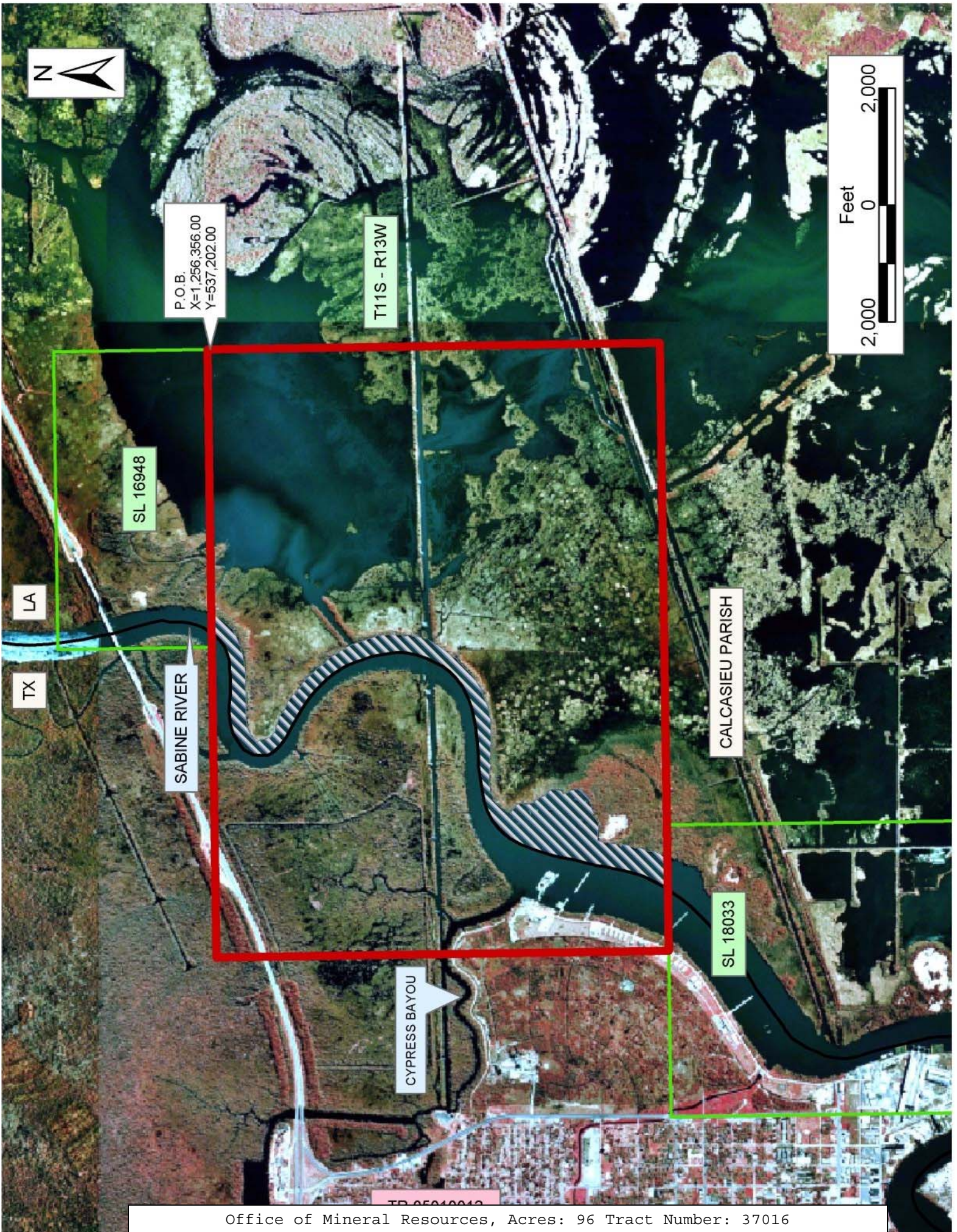
TRACT 37016 - Calcasieu Parish, Louisiana

All of the lands now or formerly constituting the beds and bottoms of all water bodies of every nature and description the title of which vests in the State of Louisiana, together with all islands arising therein and other lands formed by accretion or by reliction, where allowed by law, excepting tax adjudicated lands, and not presently under mineral lease on January 12, 2005, situated in Calcasieu Parish, Louisiana, and more particularly described as follows: Beginning at the Southeast corner of State Lease No. 16948, as amended having Coordinates of X = 1,256,356.00 and Y = 537,202.00; thence South 7,752.31 feet to a point having Coordinates of X = 1,256,356.00 and Y = 529,449.69; thence West 8,256.00 feet to the Northeast corner of State Lease No. 18033 having Coordinates of X = 1,248,100.00 and Y = 529,449.69; thence West 2,158.41 feet on the North line of said State Lease No. 18033 to a point having Coordinates of X = 1,245,941.59 and Y = 529,449.69; thence North 7,752.31 feet to a point having Coordinates of X = 1,245,941.59 and Y = 537,202.00; thence East 5,314.41 feet to the Southwest corner of said State Lease No. 16948 having Coordinates of X = 1,251,256.00 and Y = 537,202.00; thence East 5,100.00 feet on the South line of said State Lease No. 16948 to the point of beginning, containing approximately **96 acres, LESS AND EXCEPT** that portion thereof, if any, located West of the boundary line between the States of Texas and Louisiana as determined by the report of the Special Master and adjudicated by the Supreme Court of the United States in litigation styled **Texas v. Louisiana, et al No. 36 Original**, or as otherwise approved by said court, all as more particularly outlined on a plat on file in the Office of Mineral Resources, Department of Natural Resources. All bearings, distances and coordinates are based on Louisiana Coordinate System of 1927, (North or South Zone), where applicable.

NOTE: The above description of the Tract nominated for lease has been provided and corrected, where required, exclusively by the nomination party. Any mineral lease selected from this Tract and awarded by the Louisiana State Mineral Board shall be without warranty of any kind, either express, implied, or statutory, including, but not limited to, the implied warranties of merchantability and fitness for a particular purpose. Should the mineral lease awarded by the Louisiana State Mineral Board be subsequently modified, cancelled or abrogated due to the existence of conflicting leases, operating agreements, private claims or other future obligations or conditions which may affect all or any portion of the leased Tract, it shall not relieve the Lessee of the obligation to pay any bonus due thereon to the Louisiana State Mineral Board, nor shall the Louisiana State Mineral Board be obligated to refund any consideration paid by the Lessor prior to such modification, cancellation, or abrogation, including, but not limited to, bonuses, rentals and royalties.

Applicant: Juanita C. Chatelain

Bidder	Cash Payment	Price/Acre	Rental	Oil	Gas	Other



P.O.B.
X=1,256,356.00
Y=537,202.00

T11S - R13W

SL 16948

LA

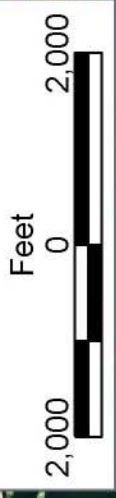
TX

SABINE RIVER

CALCASIEU PARISH

SL 18033

CYPRESS BAYOU



TRACT 37017 - St. Bernard Parish, Louisiana

All of the lands now or formerly constituting the beds and bottoms of all water bodies of every nature and description the title of which vests in the State of Louisiana, together with all islands arising therein and other lands formed by accretion or by reliction, where allowed by law, excepting tax adjudicated lands, and not presently under mineral lease on January 12, 2005, situated in St. Bernard Parish, Louisiana, and more particularly described as follows: Beginning at a point having Coordinates of X = 2,587,145.00 and Y = 502,074.00; thence South 1,973.00 feet to the Northwest corner of State Lease No. 18255 having Coordinates of X = 2,587,145.00 and Y = 500,101.00; thence along the boundary of said State Lease No. 18255 the following courses and distances: South 3,465.00 feet and East 5,203.00 feet to the Southeast corner of State Lease No. 18255 having Coordinates of X = 2,592,348.00 and Y = 496,636.00; thence East 216.60 feet to the Northwest corner of State Lease No. 18157 having Coordinates of X = 2,592,564.60 and Y = 496,636.00; thence South 5,466.73 feet along the West line of State Lease No. 18157 to its Southwest corner having Coordinates of X = 2,592,564.60 and Y = 491,169.27; thence South 470.84 feet to a point having Coordinates of X = 2,592,564.60 and Y = 490,698.43; thence West 9,534.04 feet to a point on the boundary of the Biloxi Wildlife Management Area having Coordinates of X = 2,583,030.56 and Y = 490,698.43; thence South 88 degrees 14 minutes 02 seconds West 2,650.32 feet along the boundary of the Biloxi Wildlife Management Area to a point, also being the Northeast corner of State Lease No. 17975 having Coordinates of X = 2,580,381.50 and Y = 490,616.74; thence along the North line of State Lease No. 17975 and the boundary of Biloxi Wildlife Management Area the following courses and distances: South 88 degrees 14 minutes 02 seconds West 543.93 feet and South 86 degrees 30 minutes 57 seconds West 2,027.90 feet to the Northwest corner of State Lease No. 17975, the Northeast corner of State Lease No. 17770 and a point on the boundary of the Biloxi Wildlife Management Area having Coordinates of X = 2,577,813.68 and Y = 490,476.73; thence along the boundary of the Biloxi Wildlife Management Area the following courses and distances: North 02 degrees 52 minutes 58 seconds West 5341.39 feet, North 03 degrees 50 minutes 37 seconds West 123.80 feet, North 86 degrees 30 minutes 25 seconds East 161.58 feet, North 87 degrees 27 minutes 15 seconds East 1,149.34 feet, North 87 degrees 25 minutes 44 seconds East 503.43 feet, North 87 degrees 33 minutes 11 seconds East 816.84 feet, North 87 degrees 02 minutes 54 seconds East 307.19 feet, North 87 degrees 07 minutes 21 seconds East 2,340.25 feet, North 14 degrees 01 minutes 03 seconds West 4,470.12 feet, North 13 degrees 56 minutes 47 seconds West 883.52 feet, North 14 degrees 09 minutes 15 seconds West 276.44 feet and North 01 degrees 14 minutes 31 seconds West 425.02 feet to a point on the boundary of the Biloxi Wildlife Management Area having Coordinates of X = 2,581,436.86 and Y = 502,074.00; thence East 5,708.14 feet to the point of beginning, **LESS AND EXCEPT** any portion of the Biloxi Wildlife Management Area that may lie within the above described tract, containing approximately **1,096 acres**, all as more particularly outlined on a plat on file in the Office of Mineral Resources, Department of Natural Resources.

All bearings, distances and coordinates are based on Louisiana Coordinate System of 1927, (North or South Zone), where applicable.

NOTE: The above description of the Tract nominated for lease has been provided and corrected, where required, exclusively by the nomination party. Any mineral lease selected from this Tract and awarded by the Louisiana State Mineral Board shall be without warranty of any kind, either express, implied, or statutory, including, but not limited to, the implied warranties of merchantability and fitness for a particular purpose. Should the mineral lease awarded by the Louisiana State Mineral Board be subsequently modified, cancelled or abrogated due to the existence of conflicting leases, operating agreements, private claims or other future obligations or conditions which may affect all or any portion of the leased Tract, it shall not relieve the Lessee of the obligation to pay any bonus due thereon to the Louisiana State Mineral Board, nor shall the Louisiana State Mineral Board be obligated to refund any consideration paid by the Lessor prior to such modification, cancellation, or abrogation, including, but not limited to, bonuses, rentals and royalties.

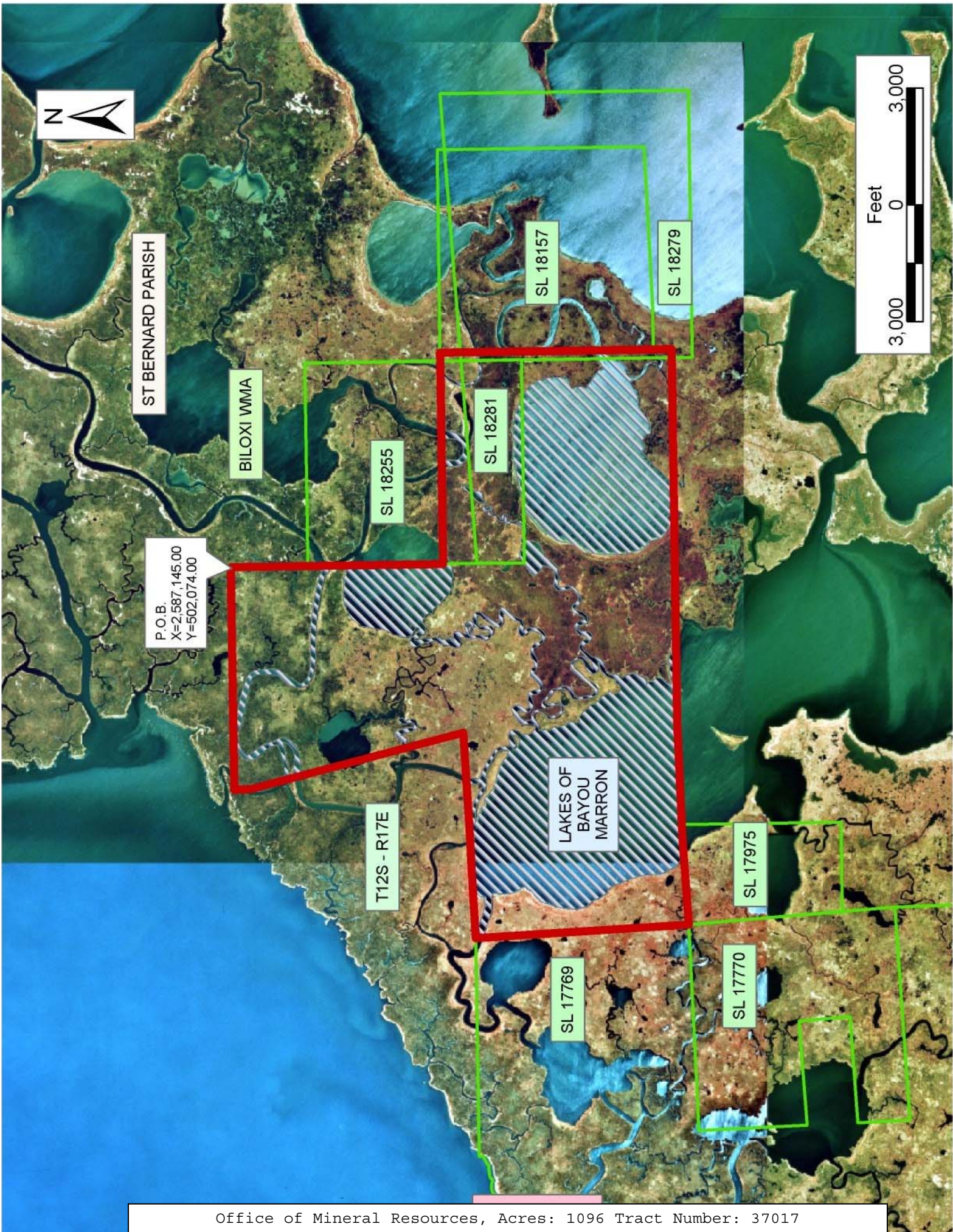
NOTE: The Office of Mineral Resources will require a minimum bonus of \$230 per acre and a minimum royalty of 23%.

NOTE: The State of Louisiana does hereby reserve, and this lease shall be subject to, the imprescriptible right of surface use in the nature of a servitude in favor of the Department of Natural Resources, including its Offices and Commissions, for the sole purpose of implementing, constructing, servicing and maintaining approved coastal zone management and/or restoration projects. Utilization of any and all rights derived under this lease by the mineral lessee, its agents, successors or assigns, shall not interfere with nor hinder the reasonable surface use by the Department of Natural Resources, its Offices or Commissions, as herein above reserved.

NOTE: The Department of Wildlife and Fisheries has designated certain areas in the coastal waters of the State of Louisiana as Oyster Seed Bed Areas. The exact location of those Seed Bed Areas must be obtained from the Department of Wildlife and Fisheries and any work done under a mineral lease from the State of Louisiana may necessarily be conducted in conformity with the rules and regulations promulgated by the said Department of Wildlife and Fisheries for Oyster Seed Bed Areas.

Applicant: Kare-Sue Energy, Inc.

Bidder	Cash Payment	Price/Acre	Rental	Oil	Gas	Other



TRACT 37018 - St. Bernard Parish, Louisiana

All of the lands now or formerly constituting the beds and bottoms of all water bodies of every nature and description the title of which vests in the State of Louisiana, together with all islands arising therein and other lands formed by accretion or by reliction, where allowed by law, excepting tax adjudicated lands, and not presently under mineral lease on January 12, 2005, situated in St. Bernard Parish, Louisiana, and more particularly described as follows: Beginning at a point having Coordinates of X = 2,587,145.00 and Y = 502,074.00; thence East 11,176.00 feet to the Southwest corner of State Lease No. 18251 having Coordinates of X = 2,598,321.00 and Y = 502,074.00; thence East 2,250.00 feet along the South line of State Lease No. 18251 to a point, also being the Northwest corner of State Lease No. 18256 having Coordinates of X = 2,600,571.00 and Y = 502,074.00; thence South 5,438.00 feet along the West line of State Lease No. 18256 to its Southwest corner having Coordinates of X = 2,600,571.00 and Y = 496,636.00; thence West 1,813.00 feet to a point having Coordinates of X = 2,598,758.00 and Y = 496,636.00; thence South 5,266.89 feet to a point on the boundary of the Biloxi Wildlife Management Area having Coordinates of X = 2,598,758.00 and Y = 491,369.11; thence South 87 degrees 44 minutes 53 seconds West 994.52 feet along the boundary of the Biloxi Wildlife Management Area to a point, also being the Southeast corner of State Lease No. 18157 having Coordinates of X = 2,597,764.25 and Y = 491,330.03; thence along the boundary of State Lease No. 18157 the following courses and distances: North 5,305.97 feet and West 5,199.65 feet to the Northwest corner of State Lease No. 18157 having Coordinates of X = 2,592,564.60 and Y = 496,636.00; thence West 216.60 feet to the Southeast corner of State Lease No. 18255 having Coordinates of X = 2,592,348.00 and Y = 496,636.00; thence along the boundary of State Lease No. 18255 the following courses and distances: North 3,465.00 feet and West 5,203.00 feet to the Northwest corner of State Lease No. 18255 having Coordinates of X = 2,587,145.00 and Y = 500,101.00; thence North 1,973.00 feet to the point of beginning, **LESS AND EXCEPT** any portion of the Biloxi Wildlife Management Area that may lie within the above described tract, containing approximately **489 acres**, all as more particularly outlined on a plat on file in the Office of Mineral Resources, Department of Natural Resources. All bearings, distances and coordinates are based on Louisiana Coordinate System of 1927, (North or South Zone), where applicable.

NOTE: The above description of the Tract nominated for lease has been provided and corrected, where required, exclusively by the nomination party. Any mineral lease selected from this Tract and awarded by the Louisiana State Mineral Board shall be without warranty of any kind, either express, implied, or statutory, including, but not limited to, the implied warranties of merchantability and fitness for a particular purpose. Should the mineral lease awarded by the Louisiana State Mineral Board be subsequently modified, cancelled or abrogated due to the existence of conflicting leases, operating agreements, private claims or other future obligations or conditions which may affect all or any portion of the leased Tract, it shall not relieve the Lessee of the obligation to

pay any bonus due thereon to the Louisiana State Mineral Board, nor shall the Louisiana State Mineral Board be obligated to refund any consideration paid by the Lessor prior to such modification, cancellation, or abrogation, including, but not limited to, bonuses, rentals and royalties.

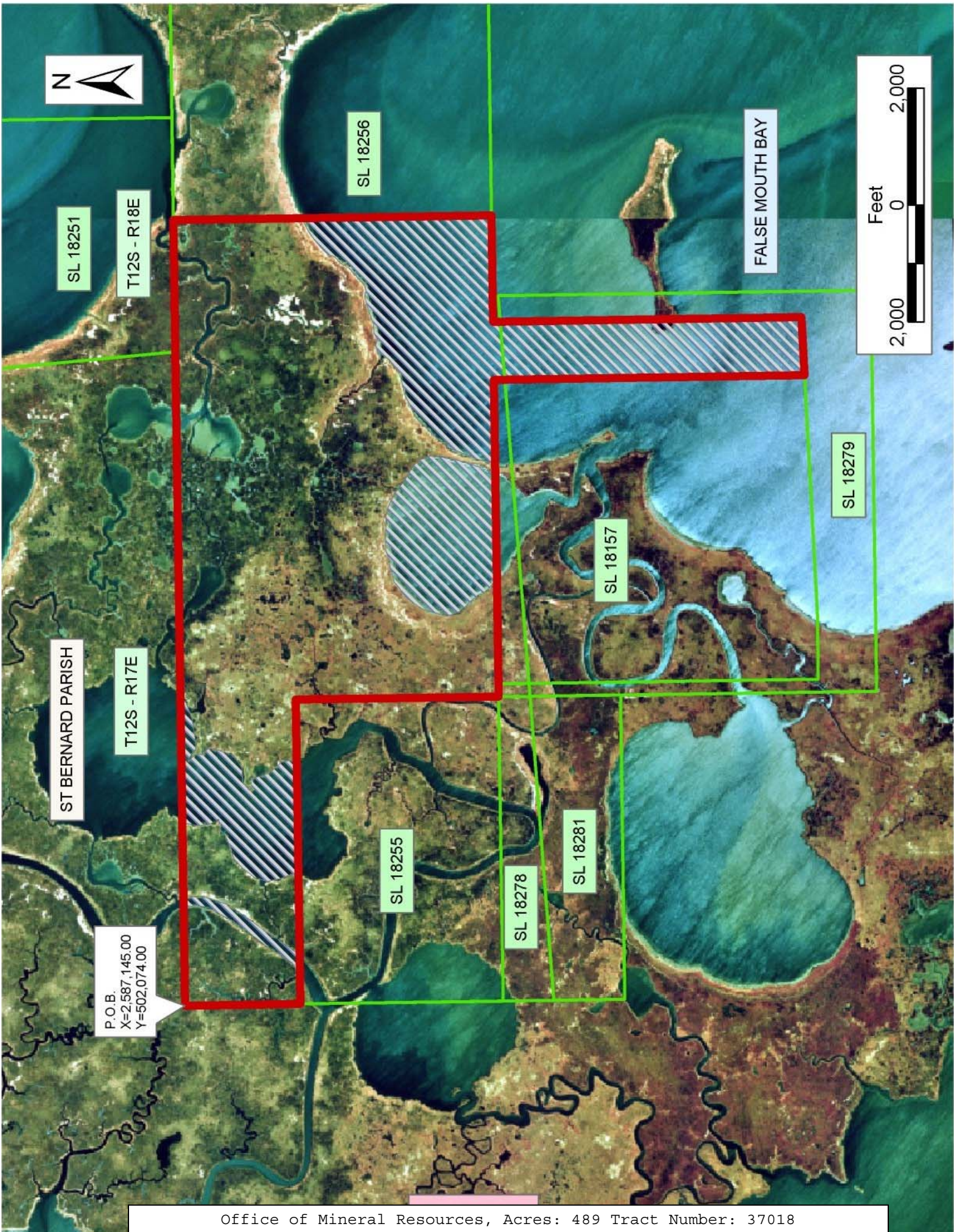
NOTE: The Office of Mineral Resources will require a minimum bonus of \$230 per acre and a minimum royalty of 23%.

NOTE: The State of Louisiana does hereby reserve, and this lease shall be subject to, the imprescriptible right of surface use in the nature of a servitude in favor of the Department of Natural Resources, including its Offices and Commissions, for the sole purpose of implementing, constructing, servicing and maintaining approved coastal zone management and/or restoration projects. Utilization of any and all rights derived under this lease by the mineral lessee, its agents, successors or assigns, shall not interfere with nor hinder the reasonable surface use by the Department of Natural Resources, its Offices or Commissions, as herein above reserved.

NOTE: The Department of Wildlife and Fisheries has designated certain areas in the coastal waters of the State of Louisiana as Oyster Seed Bed Areas. The exact location of those Seed Bed Areas must be obtained from the Department of Wildlife and Fisheries and any work done under a mineral lease from the State of Louisiana may necessarily be conducted in conformity with the rules and regulations promulgated by the said Department of Wildlife and Fisheries for Oyster Seed Bed Areas.

Applicant: Kare-Sue Energy, Inc.

Bidder	Cash Payment	Price/Acre	Rental	Oil	Gas	Other



SL 18251

T12S - R18E

SL 18256

FALSE MOUTH BAY

ST BERNARD PARISH

T12S - R17E

P.O.B.
X=2,587,145.00
Y=502,074.00

SL 18255

SL 18157

SL 18279

SL 18278

SL 18281