

TRACT 37002 - Portion of Block 3, West Cameron Area, Revised, Cameron Parish, Louisiana

The beds and bottoms of all water bodies belonging to the State of Louisiana located in Block 3, West Cameron Area, Revised, together with any present lands formed by accretion to the shoreline or islands formed therein, located in Cameron Parish, Louisiana, owned by and not presently under mineral lease as of January 12, 2005, from the State of Louisiana, the geographical area of which is more fully described as follows: Beginning at a point on the East line of Block 3, West Cameron Area, Revised, having Coordinates of X = 1,405,806.20 and Y = 401,082.74; thence West 598.40 feet to the Southeast corner of State Lease No. 17638 having Coordinates of X = 1,405,207.80 and Y = 401,082.74; thence along the boundary of said State Lease No. 17638 the following courses and distances: North 25 degrees 17 minutes 58 seconds East 381.89 feet, North 01 degrees 27 minutes 47 seconds West 1,292.42 feet, North 17 degrees 31 minutes 50 seconds West 1,742.95 feet, North 73 degrees 34 minutes 27 seconds West 2,669.97 feet, South 50 degrees 26 minutes 46 seconds West 1,631.59 feet, South 05 degrees 31 minutes 13 seconds West 2,484.52 feet and South 50 degrees 27 minutes 04 seconds East 851.62 feet to the Southwest corner of said State Lease No. 17638 having Coordinates of X = 1,401,411.67 and Y = 401,082.74; thence West 7,581.67 feet to a point having Coordinates of X = 1,393,830.00 and Y = 401,082.74; thence North 7,988.58 feet to a point having Coordinates of X = 1,393,830.00 and Y = 409,071.32; thence Southeasterly on a straight line to a point having Coordinates of X = 1,397,220.00 and Y = 408,870.00; thence Southeasterly on a straight line to a point having Coordinates of X = 1,402,525.00 and Y = 408,365.00; thence Southeasterly on a straight line to a point on the East line of said Block 3 having Coordinates of X = 1,405,806.20 and Y = 407,818.13; thence South 6,735.39 feet along the East line of said Block 3 to the point of beginning, containing approximately **1,705.67 acres**, all as more particularly outlined on a plat on file in the Office of Mineral Resources, Department of Natural Resources. All bearings, distances and coordinates are based on Louisiana Coordinate System of 1927, (North or South Zone).

NOTE: The above description of the Tract nominated for lease has been provided and corrected, where required, exclusively by the nomination party. Any mineral lease selected from this Tract and awarded by the Louisiana State Mineral Board shall be without warranty of any kind, either express, implied, or statutory, including, but not limited to, the implied warranties of merchantability and fitness for a particular purpose. Should the mineral lease awarded by the Louisiana State Mineral Board be subsequently modified, cancelled or abrogated due to the existence of conflicting leases, operating agreements, private claims or other future obligations or conditions which may affect all or any portion of the leased Tract, it shall not relieve the Lessee of the obligation to pay any bonus due thereon to the Louisiana State Mineral Board, nor shall the Louisiana State Mineral Board be obligated to refund any consideration

paid by the Lessor prior to such modification, cancellation, or abrogation, including, but not limited to, bonuses, rentals and royalties.

NOTE: The State of Louisiana does hereby reserve, and this lease shall be subject to, the imprescriptible right of surface use in the nature of a servitude in favor of the Department of Natural Resources, including its Offices and Commissions, for the sole purpose of implementing, constructing, servicing and maintaining approved coastal zone management and/or restoration projects. Utilization of any and all rights derived under this lease by the mineral lessee, its agents, successors or assigns, shall not interfere with nor hinder the reasonable surface use by the Department of Natural Resources, its Offices or Commissions, as herein above reserved.

Applicant: Dara Doty

Bidder	Cash Payment	Price/Acre	Rental	Oil	Gas	Other



CAMERON PARISH

Coastline

BLOCK WC0004

BLOCK WC0002

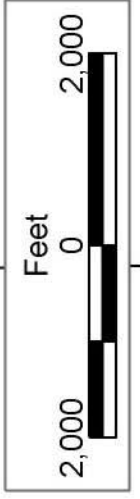
BLOCK WC0003

WEST CAMERON AREA, REVISED

SL 17638

SL 17639

P.O.B.
X=1,405,806.20
Y=401,082.74



TRACT 37003 - Portion of Block 2, West Cameron Area, Revised, Cameron Parish, Louisiana

The beds and bottoms of all water bodies belonging to the State of Louisiana located in Block 2, West Cameron Area, Revised, together with any present lands formed by accretion to the shoreline or islands formed therein, located in Cameron Parish, Louisiana, owned by and not presently under mineral lease as of January 12, 2005, from the State of Louisiana, the geographical area of which is more fully described as follows: Beginning at a point on the West line of Block 2, West Cameron Area, Revised, having Coordinates of X = 1,405,806.20 and Y = 401,082.74; thence North 6,735.39 feet along the West line of said Block 2 to a point having Coordinates of X = 1,405,806.20 and Y = 407,818.13; thence Southeasterly on a straight line to a point having Coordinates of X = 1,410,175 and Y = 407,090; thence Southeasterly on a straight line to a point having Coordinates of X = 1,415,806.20 and Y = 405,825.48; thence South 4,742.74 feet to a point having Coordinates of X = 1,415,806.20 and Y = 401,082.74; thence West 10,000.00 feet to the point of beginning, containing approximately **1,333.86 acres**, all as more particularly outlined on a plat on file in the Office of Mineral Resources, Department of Natural Resources. All bearings, distances and coordinates are based on Louisiana Coordinate System of 1927, (North or South Zone).

NOTE: The above description of the Tract nominated for lease has been provided and corrected, where required, exclusively by the nomination party. Any mineral lease selected from this Tract and awarded by the Louisiana State Mineral Board shall be without warranty of any kind, either express, implied, or statutory, including, but not limited to, the implied warranties of merchantability and fitness for a particular purpose. Should the mineral lease awarded by the Louisiana State Mineral Board be subsequently modified, cancelled or abrogated due to the existence of conflicting leases, operating agreements, private claims or other future obligations or conditions which may affect all or any portion of the leased Tract, it shall not relieve the Lessee of the obligation to pay any bonus due thereon to the Louisiana State Mineral Board, nor shall the Louisiana State Mineral Board be obligated to refund any consideration paid by the Lessor prior to such modification, cancellation, or abrogation, including, but not limited to, bonuses, rentals and royalties.

NOTE: The State of Louisiana does hereby reserve, and this lease shall be subject to, the imprescriptible right of surface use in the nature of a servitude in favor of the Department of Natural Resources, including its Offices and Commissions, for the sole purpose of implementing, constructing, servicing and maintaining approved coastal zone management and/or restoration projects. Utilization of any and all rights derived under this lease by the mineral lessee, its agents, successors or assigns, shall not interfere with nor hinder the reasonable surface use by the Department of Natural Resources, its Offices or Commissions, as herein above reserved.

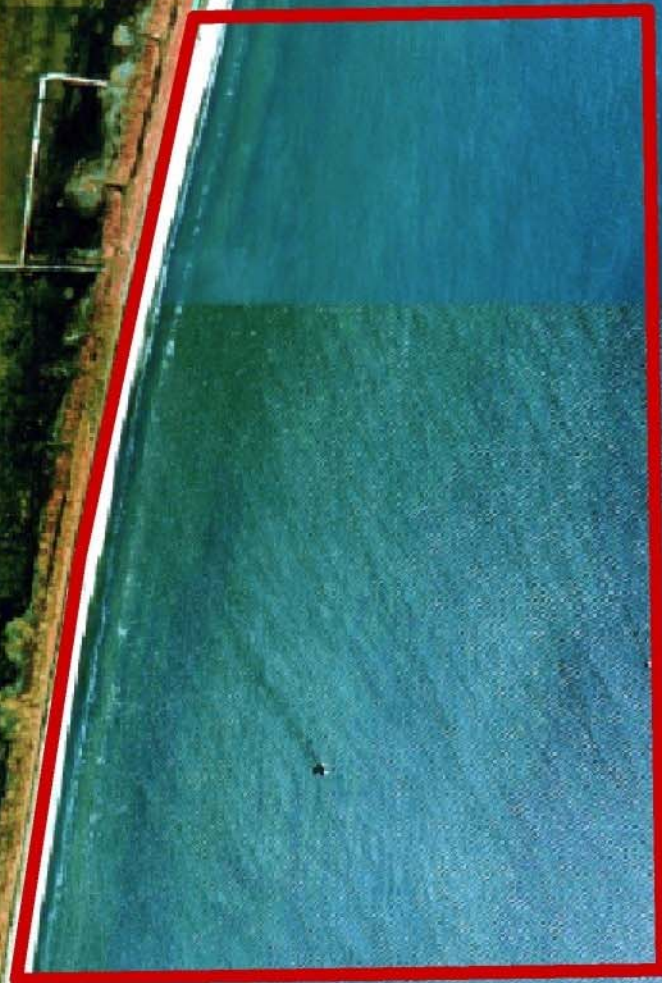
Applicant: Dara Doty

Bidder	Cash Payment	Price/Acre	Rental	Oil	Gas	Other



T15S - R8W

CAMERON PARISH



WEST CAMERON AREA, REVISED

BLOCK WC0002

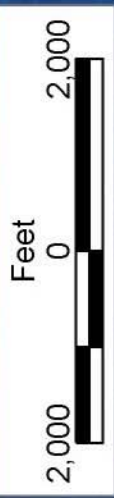
P.O.B.
X=1,405,806.20
Y=401,082.74



SL 17638

SL 17639

BLOCK WC0003



TRACT 37004 - Portion of Blocks 28, 29, and 3, West Cameron Area, Revised, Cameron Parish, Louisiana

The beds and bottoms of all water bodies belonging to the State of Louisiana located in Blocks 28, 29, and 3, West Cameron Area, Revised, together with any present lands formed by accretion to the shoreline or islands formed therein, located in Cameron Parish, Louisiana, owned by and not presently under mineral lease as of January 12, 2005, from the State of Louisiana, the geographical area of which is more fully described as follows: Beginning at a point on the East line of Block 3, West Cameron Area, Revised, having Coordinates of X = 1,405,806.20 and Y = 401,082.74; thence South 7,292.50 feet along the East line of said Block 3 to its Southeast corner and a point on the North line of Block 28, West Cameron Area having Coordinates of X = 1,405,806.20 and Y = 393,790.24; thence East 403.56 feet along the North line of said Block 28 to its Northeast corner having Coordinates of X = 1,406,209.76 and Y = 393,790.24; thence South 4,531.71 feet along the East line of said Block 28 to a point having Coordinates of X = 1,406,209.76 and Y = 389,258.53; thence Northwesterly on a straight line to the Southeast corner of State Lease No. 17845 having Coordinates of X = 1,403,310.00 and Y = 389,741.75; thence North 4,048.49 feet along the East line of said State Lease No. 17845 to its Northeast corner, also being the Southeast corner of State Lease No. 17842 and a point on the South line of said Block 3 having Coordinates of X = 1,403,310.00 and Y = 393,790.24; thence along the boundary of said State Lease No. 17842 the following courses and distances: North 1,974.76 feet and West 9,480.00 feet to the Northwest corner of said State Lease No. 17842 having Coordinates of X = 1,393,830.00 and Y = 395,765.00; thence North 5,317.74 feet to a point having Coordinates of X = 1,393,830.00 and Y = 401,082.74; thence East 7,581.67 feet to the Northwest corner of State Lease No. 17639 having Coordinates of X = 1,401,411.67 and Y = 401,082.74; thence along the boundary of said State Lease No. 17639 the following courses and distances: South 50 degrees 27 minutes 03 seconds East 949.75 feet, South 13 degrees 11 minutes 54 seconds West 1,011.72 feet, South 60 degrees 20 minutes 34 seconds East 1,459.15 feet, North 64 degrees 07 minutes 11 seconds East 1,347.10 feet and North 25 degrees 17 minutes 59 seconds East 1,906.61 feet to the Northeast corner of said State Lease No. 17639 having Coordinates of X = 1,405,207.80 and Y = 401,082.74; thence East 598.40 feet to the point of beginning, containing approximately **1,732.48 acres, LESS AND EXCEPT** that portion thereof, if any, lying seaward of the line three nautical miles from the coast line of Louisiana, as said three mile line has been decreed by the Supreme Court of the United States, as determined by a Special Master appointed therein, in litigation styled **United States v. State of Louisiana et al No. 9 Original**, in 1975, all as more particularly outlined on a plat in the Office of Mineral Resources, Department of Natural Resources. All bearings, distances and coordinates are based on the Louisiana Coordinate System of 1927, (South Zone).

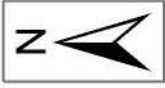
NOTE: The above description of the Tract nominated for lease has been provided and corrected, where required, exclusively by the nomination

party. Any mineral lease selected from this Tract and awarded by the Louisiana State Mineral Board shall be without warranty of any kind, either express, implied, or statutory, including, but not limited to, the implied warranties of merchantability and fitness for a particular purpose. Should the mineral lease awarded by the Louisiana State Mineral Board be subsequently modified, cancelled or abrogated due to the existence of conflicting leases, operating agreements, private claims or other future obligations or conditions which may affect all or any portion of the leased Tract, it shall not relieve the Lessee of the obligation to pay any bonus due thereon to the Louisiana State Mineral Board, nor shall the Louisiana State Mineral Board be obligated to refund any consideration paid by the Lessor prior to such modification, cancellation, or abrogation, including, but not limited to, bonuses, rentals and royalties.

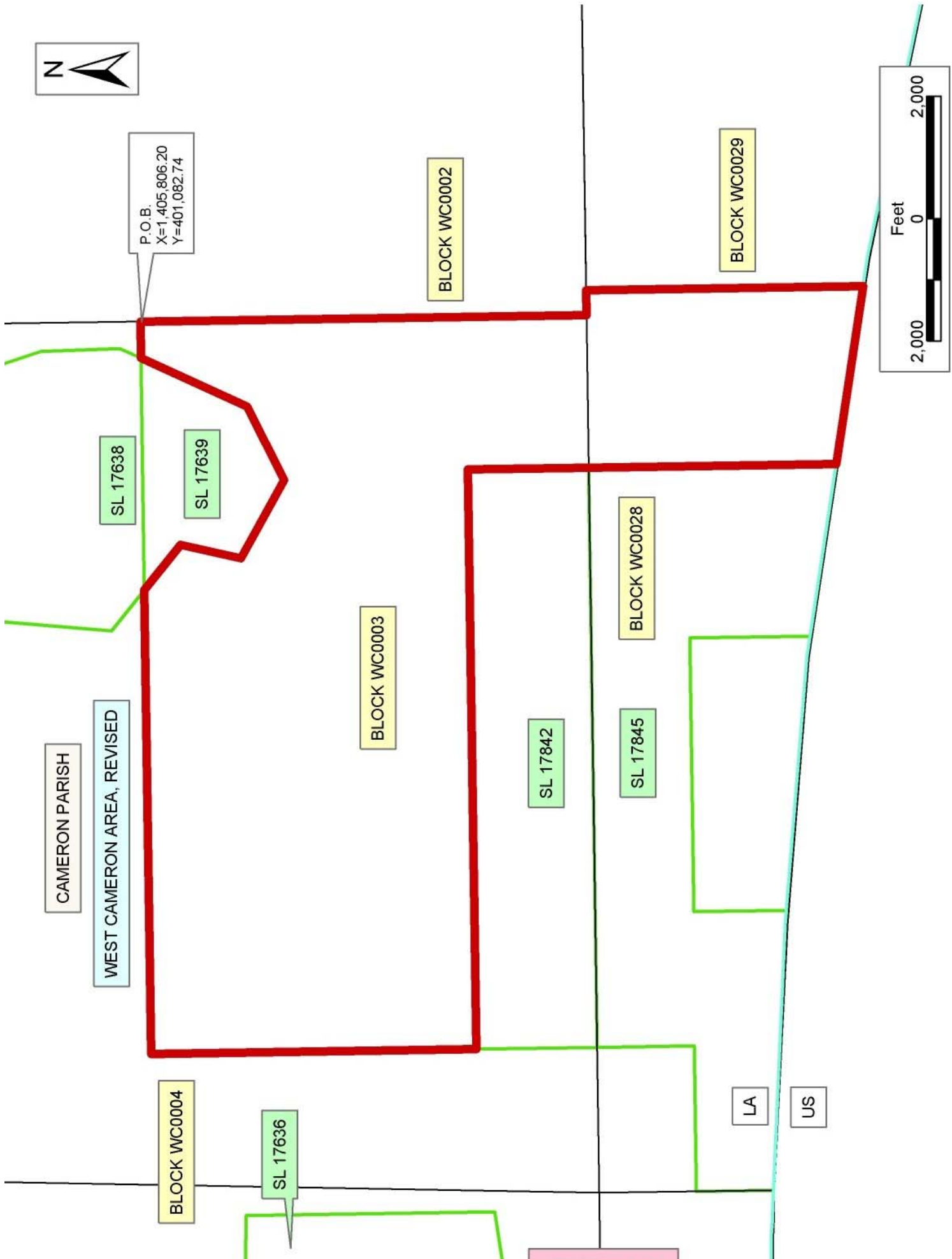
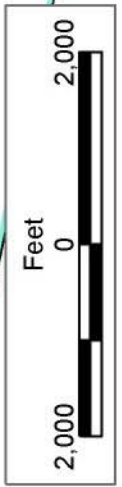
NOTE: The State of Louisiana does hereby reserve, and this lease shall be subject to, the imprescriptible right of surface use in the nature of a servitude in favor of the Department of Natural Resources, including its Offices and Commissions, for the sole purpose of implementing, constructing, servicing and maintaining approved coastal zone management and/or restoration projects. Utilization of any and all rights derived under this lease by the mineral lessee, its agents, successors or assigns, shall not interfere with nor hinder the reasonable surface use by the Department of Natural Resources, its Offices or Commissions, as herein above reserved.

Applicant: Dara Doty

Bidder	Cash Payment	Price/Acre	Rental	Oil	Gas	Other



P.O.B.
X=1,405,806.20
Y=401,082.74



TRACT 37005 - Portion of Block 2, West Cameron Area, Revised, Cameron Parish, Louisiana

The beds and bottoms of all water bodies belonging to the State of Louisiana located in Block 2, West Cameron Area, Revised, together with any present lands formed by accretion to the shoreline or islands formed therein, located in Cameron Parish, Louisiana, owned by and not presently under mineral lease as of January 12, 2005, from the State of Louisiana, the geographical area of which is more fully described as follows: Beginning at a point on the West line of Block 2, West Cameron Area, Revised, having Coordinates of X = 1,405,806.20 and Y = 401,082.74; thence East 10,000.00 feet to a point having Coordinates of X = 1,415,806.20 and Y = 401,082.74; thence South 7,292.50 feet to a point on the South line of said Block 2 having Coordinates of X = 1,415,806.20 and Y = 393,790.24; thence West 10,000.00 feet along the South line of said Block 2 to its Southwest corner having Coordinates of X = 1,405,806.20 and Y = 393,790.24; thence North 7,292.50 feet along the West line of said Block 2 to the point of beginning, containing approximately **1,674.13 acres**, all as more particularly outlined on a plat on file in the Office of Mineral Resources, Department of Natural Resources. All bearings, distances and coordinates are based on Louisiana Coordinate System of 1927, (North or South Zone).

NOTE: The above description of the Tract nominated for lease has been provided and corrected, where required, exclusively by the nomination party. Any mineral lease selected from this Tract and awarded by the Louisiana State Mineral Board shall be without warranty of any kind, either express, implied, or statutory, including, but not limited to, the implied warranties of merchantability and fitness for a particular purpose. Should the mineral lease awarded by the Louisiana State Mineral Board be subsequently modified, cancelled or abrogated due to the existence of conflicting leases, operating agreements, private claims or other future obligations or conditions which may affect all or any portion of the leased Tract, it shall not relieve the Lessee of the obligation to pay any bonus due thereon to the Louisiana State Mineral Board, nor shall the Louisiana State Mineral Board be obligated to refund any consideration paid by the Lessor prior to such modification, cancellation, or abrogation, including, but not limited to, bonuses, rentals and royalties.

NOTE: The State of Louisiana does hereby reserve, and this lease shall be subject to, the imprescriptible right of surface use in the nature of a servitude in favor of the Department of Natural Resources, including its Offices and Commissions, for the sole purpose of implementing, constructing, servicing and maintaining approved coastal zone management and/or restoration projects. Utilization of any and all rights derived under this lease by the mineral lessee, its agents, successors or assigns, shall not interfere with nor hinder the reasonable surface use by the Department of Natural Resources, its Offices or Commissions, as herein above reserved.

Applicant: Dara Doty

Bidder	Cash Payment	Price/Acre	Rental	Oil	Gas	Other



CAMERON PARISH

WEST CAMERON AREA, REVISED

P.O.B.
X=1,405,806.20
Y=401,082.74

SL 17638

SL 17639

BLOCK WC0002

BLOCK WC0003

SL 17842

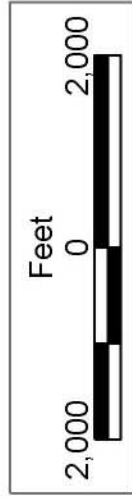
SL 17845

BLOCK WC0029

BLOCK WC0028

LA

US



TRACT 37006 - Portion of Block 28, West Cameron Area, Revised, Cameron Parish, Louisiana

The beds and bottoms of all water bodies belonging to the State of Louisiana located in Block 28, West Cameron Area, Revised, together with any present lands formed by accretion to the shoreline or islands formed therein, located in Cameron Parish, Louisiana, owned by and not presently under mineral lease as of January 12, 2005, from the State of Louisiana, the geographical area of which is more fully described as follows: Beginning at a point within Block 28, West Cameron Area, Revised, also being a corner of State Lease No. 17845 having Coordinates of X = 1,396,025.00 and Y = 390,660.98; thence along the boundary of said State Lease No. 17845 the following courses and distances: North 1,514.01 feet, East 4,475.00 feet and South 1,964.98 feet to a corner of said State Lease No. 17845 having Coordinates of X = 1,400,500.00 and Y = 390,210.01; thence Northwesterly on a straight line to a point having Coordinates of X = 1,400,158 and Y = 390,267; thence Northwesterly on a straight line to the point of beginning, containing approximately **177.54 acres, LESS AND EXCEPT** that portion thereof, if any, lying seaward of the line three nautical miles from the coast line of Louisiana, as said three mile line has been decreed by the Supreme Court of the United States, as determined by a Special Master appointed therein, in litigation styled **United States v. State of Louisiana et al No. 9 Original**, in 1975, all as more particularly outlined on a plat in the Office of Mineral Resources, Department of Natural Resources. All bearings, distances and coordinates are based on the Louisiana Coordinate System of 1927, (South Zone).

NOTE: The above description of the Tract nominated for lease has been provided and corrected, where required, exclusively by the nomination party. Any mineral lease selected from this Tract and awarded by the Louisiana State Mineral Board shall be without warranty of any kind, either express, implied, or statutory, including, but not limited to, the implied warranties of merchantability and fitness for a particular purpose. Should the mineral lease awarded by the Louisiana State Mineral Board be subsequently modified, cancelled or abrogated due to the existence of conflicting leases, operating agreements, private claims or other future obligations or conditions which may affect all or any portion of the leased Tract, it shall not relieve the Lessee of the obligation to pay any bonus due thereon to the Louisiana State Mineral Board, nor shall the Louisiana State Mineral Board be obligated to refund any consideration paid by the Lessor prior to such modification, cancellation, or abrogation, including, but not limited to, bonuses, rentals and royalties.

NOTE: The State of Louisiana does hereby reserve, and this lease shall be subject to, the imprescriptible right of surface use in the nature of a servitude in favor of the Department of Natural Resources, including its Offices and Commissions, for the sole purpose of implementing, constructing, servicing and maintaining approved coastal zone management and/or restoration projects. Utilization of any and all rights derived under this lease by the mineral lessee, its agents, successors or assigns,

shall not interfere with nor hinder the reasonable surface use by the Department of Natural Resources, its Offices or Commissions, as herein above reserved.

Applicant: Dara Doty

Bidder	Cash Payment	Price/Acre	Rental	Oil	Gas	Other



WEST CAMERON AREA, REVISED

CAMERON PARISH

BLOCK WC0003

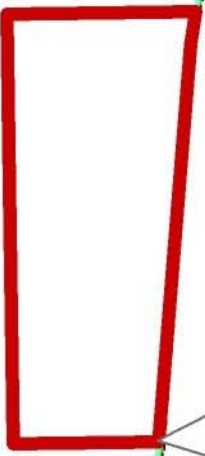
SL 17842

SL 17845

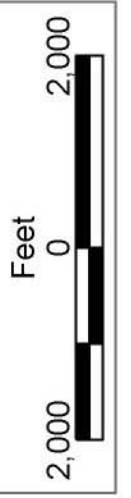
BLOCK WC0028

LA

US



P.O.B.
X=1,396,025.00
Y=390,660.98



TRACT 37007 - Portion of Block 4, Bay Marchand Area, Lafourche Parish, Louisiana

The beds and bottoms of all water bodies belonging to the State of Louisiana located in Block 4, Bay Marchand Area, together with any present lands formed by accretion to the shoreline or islands formed therein, located in Lafourche Parish, Louisiana, owned by and not presently under mineral lease as of January 12, 2005, from the State of Louisiana, the geographical area of which is more fully described as follows: Beginning at a point on the West line of Block 4, Bay Marchand Area, having Coordinates of X = 2,354,677.73 and Y = 152,750.00; thence South 46 degrees 45 minutes, 59 seconds East 4,014.74 feet to a point having Coordinates of X = 2,357,602.73 and Y = 150,000.00; thence South 3,350.00 feet to a point having Coordinates of X = 2,357,602.73 and Y = 146,650.00; thence West 2,925.00 feet to a point on the West line of said Block 4 having Coordinates of X = 2,354,677.73 and Y = 146,650.00; thence North 6,100.00 feet on the West line of said Block 4 to the point of beginning, containing approximately **317.28 acres**, all as more particularly outlined on a plat on file in the Office of Mineral Resources, Department of Natural Resources. All bearings, distances and coordinates are based on Louisiana Coordinate System of 1927, (North or South Zone).

NOTE: The above description of the Tract nominated for lease has been provided and corrected, where required, exclusively by the nomination party. Any mineral lease selected from this Tract and awarded by the Louisiana State Mineral Board shall be without warranty of any kind, either express, implied, or statutory, including, but not limited to, the implied warranties of merchantability and fitness for a particular purpose. Should the mineral lease awarded by the Louisiana State Mineral Board be subsequently modified, cancelled or abrogated due to the existence of conflicting leases, operating agreements, private claims or other future obligations or conditions which may affect all or any portion of the leased Tract, it shall not relieve the Lessee of the obligation to pay any bonus due thereon to the Louisiana State Mineral Board, nor shall the Louisiana State Mineral Board be obligated to refund any consideration paid by the Lessor prior to such modification, cancellation, or abrogation, including, but not limited to, bonuses, rentals and royalties.

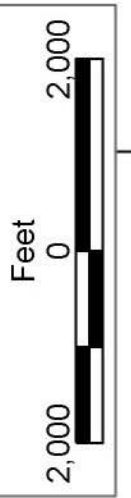
NOTE: The State of Louisiana does hereby reserve, and this lease shall be subject to, the imprescriptible right of surface use in the nature of a servitude in favor of the Department of Natural Resources, including its Offices and Commissions, for the sole purpose of implementing, constructing, servicing and maintaining approved coastal zone management and/or restoration projects. Utilization of any and all rights derived under this lease by the mineral lessee, its agents, successors or assigns, shall not interfere with nor hinder the reasonable surface use by the Department of Natural Resources, its Offices or Commissions, as herein above reserved.

NOTE: It appears, according to our records, that a portion of this Tract is located within the restrictive safety fairway area as set out by the Corps of Engineers, U.S. Army and/or the restrictive anchorage area as set out by the U.S. Coast Guard.

NOTE: The Department of Wildlife and Fisheries has designated certain areas in the coastal waters of the State of Louisiana as Oyster Seed Bed Areas. The exact location of those Seed Bed Areas must be obtained from the Department of Wildlife and Fisheries and any work done under a mineral lease from the State of Louisiana may necessarily be conducted in conformity with the rules and regulations promulgated by the said Department of Wildlife and Fisheries for Oyster Seed Bed Areas.

Applicant: Anchor Land & Exploration Company, L.L.C.

Bidder	Cash Payment	Price/Acre	Rental	Oil	Gas	Other



LAFOURCHE PARISH

BAY MARCHAND AREA

BLOCK BM0004

SL 7394

P.O.B.
X=2,354,677.73
Y=152,750.00

BLOCK BM0005

SL 6430

SL 15970

SL 16256

SL 15310

SL 16257

SL 14498

SL 16255

TRACT 37008 - Portion of Block 41, South Pass Area, Plaquemines Parish, Louisiana

The beds and bottoms of all water bodies belonging to the State of Louisiana located in Block 41, South Pass Area, together with any present lands formed by accretion to the shoreline or islands formed therein, located in Plaquemines Parish, Louisiana, owned by and not presently under mineral lease as of January 12, 2005, from the State of Louisiana, the geographical area of which is more fully described as follows: Beginning at a point on the West line of Block 41, South Pass Area, having Coordinates X = 2,605,477.93 and Y = 91,244.00; thence East 8,409.21 feet to a point on the West line of State Lease No. 12966, as amended having Coordinates of X = 2,613,887.14 and Y = 91,244.00; thence along the boundary of said State Lease No. 12966 the following courses: South 1,894.00 feet and East 2,040.86 feet to the Southeast corner of said State Lease No. 12966, also being a point on the East line of said Block 41 having Coordinates of X = 2,615,928.00 and Y = 89,350.00; thence South 4,200.00 feet to a point on the West line of State Lease No. 18030 having Coordinates of X = 2,615,928.00 and Y = 85,150.00; thence South 1,200 feet along the West line of State Lease No. 18030 to the Northeast corner of State Lease No. 18129 having Coordinates X = 2,615,928.00 and Y = 83,950.00; thence along the boundary of said State Lease No. 18129 the following courses: West 1,500.00 feet and South 1,800.00 feet to the Southwest corner of said State Lease No. 18129, also being a point on the South line of said Block 41 having Coordinates of X = 2,614,428.00 and Y = 82,150.00; thence West 2,400.00 feet along the South line of said Block 41 to the Southeast corner of State Lease No. 15238, as amended, having Coordinates of X = 2,612,028.00 and Y = 82,150.00; thence North 674.15 feet on the East line of said State Lease No. 15238 to its Northeast corner and the Southeast corner of State Lease No. 13262, as amended, having Coordinates of X = 2,612,028.00 and Y = 82,824.15; thence North 2,925.85 feet on the East line of said State Lease No. 13262 to its Northeast corner and the Southeast corner of State Lease No. 12729, as amended, having Coordinates of X = 2,612,028.00 and Y = 85,750.00; thence along the boundary of said State Lease No. 12729 the following courses: North 1,623.34 feet and South 56 degrees 42 minutes 37 seconds West 2,957.60 feet to its Southwest corner and the Northwest corner of said State Lease No. 13262 having Coordinates of X = 2,609,555.72 and Y = 85,750.00; thence South 56 degrees 42 minutes 38 seconds West 1,651.74 feet on the West line of said State Lease No. 13262 to its Southwest corner and the most Northerly corner of said State Lease No. 15238 having Coordinates of X = 2,608,175.02 and Y = 84,843.40; thence along the boundary of said State Lease No. 15238 the following courses: South 56 degrees 42 minutes 37 seconds West 1,269.99 feet and South 43 degrees 48 minutes 08 seconds East 2,766.04 feet to its Southwest corner and a point on the South line of said Block 41 having Coordinates of X = 2,609,028.00 and Y = 82,150.00; thence West 3,550.07 feet along the South of said Block 41 to its Southwest corner having Coordinates of X = 2,605,477.93 and Y = 82,150.00; thence North 9,094.00 feet along the West line of said Block 41 to the point of beginning, **LESS AND EXCEPT**, if any, Operating Agreement

No. 232 that may lie within the above described tract, containing approximately **1,667.53 acres**, all as more particularly outlined on a plat on file in the Office of Mineral Resources, Department of Natural Resources. All bearings, distances and coordinates are based on Louisiana Coordinate System of 1927, (North or South Zone).

NOTE: The above description of the Tract nominated for lease has been provided and corrected, where required, exclusively by the nomination party. Any mineral lease selected from this Tract and awarded by the Louisiana State Mineral Board shall be without warranty of any kind, either express, implied, or statutory, including, but not limited to, the implied warranties of merchantability and fitness for a particular purpose. Should the mineral lease awarded by the Louisiana State Mineral Board be subsequently modified, cancelled or abrogated due to the existence of conflicting leases, operating agreements, private claims or other future obligations or conditions which may affect all or any portion of the leased Tract, it shall not relieve the Lessee of the obligation to pay any bonus due thereon to the Louisiana State Mineral Board, nor shall the Louisiana State Mineral Board be obligated to refund any consideration paid by the Lessor prior to such modification, cancellation, or abrogation, including, but not limited to, bonuses, rentals and royalties.

NOTE: The State of Louisiana does hereby reserve, and this lease shall be subject to, the imprescriptible right of surface use in the nature of a servitude in favor of the Department of Natural Resources, including its Offices and Commissions, for the sole purpose of implementing, constructing, servicing and maintaining approved coastal zone management and/or restoration projects. Utilization of any and all rights derived under this lease by the mineral lessee, its agents, successors or assigns, shall not interfere with nor hinder the reasonable surface use by the Department of Natural Resources, its Offices or Commissions, as herein above reserved.

NOTE: It appears, according to our records, that a portion of this Tract is located within the restrictive safety fairway area as set out by the Corps of Engineers, U.S. Army and/or the restrictive anchorage area as set out by the U.S. Coast Guard.

Bidder	Cash Payment	Price/Acre	Rental	Oil	Gas	Other

Applicant: Delta Lands Exploration, Inc.



PLAQUEMINES PARISH

SL 17381

P.O.B.
X=2,605,477.93
Y=91,244.00

SL 12967

SL 12966

AO 0232

BLOCK SP0042

BLOCK SP0041

BLOCK WD0084

SL 12729

SL 13262

SL 18030

SL 18129

SL 15238

SL 18031

BLOCK SP0058

BLOCK SP0057

SOUTH PASS AREA

