

**TRACT 35980 - Portion of Block 1, Breton Sound Area, St. Bernard Parish, Louisiana**

All of the lands now or formerly constituting the beds and bottoms of all water bodies of every nature and description the title of which vests in the State of Louisiana, together with all islands arising therein and other lands formed by accretion or by reliction, where allowed by law, excepting tax adjudicated lands, and not presently under mineral lease on January 14, 2004, situated in St. Bernard Parish, Louisiana, and more particularly described as follows: Beginning at a point on the West boundary of Block 1, Breton Sound Area, having Coordinates of X = 2,635,350.00 and Y = 378,090.27; thence South 83 degrees 13 minutes 34 seconds East 765.34 feet to the Southwest corner of State Lease No. 17453 having Coordinates of X = 2,636,110.00 and Y = 378,000.00; thence South 83 degrees 13 minutes 34 seconds East 6,273.79 feet along the South boundary of said State Lease No. 17453 to its Southeast corner having Coordinates of X = 2,642,340.00 and Y = 377,260.00; thence South 83 degrees 13 minutes 34 seconds East 387.71 feet to a point on the West boundary of State Lease No. 8522, as amended, having Coordinates of X = 2,642,725.00 and Y = 377,214.27; thence South 884.27 feet along said West boundary of said State Lease No. 8522, to its Southwest corner having Coordinates of X = 2,642,725.00 and Y = 376,330.00; thence East 3,124.97 feet along the South boundary of said State Lease No. 8522, to a point on the North boundary of State Lease No. 8025, as amended, having Coordinates of X = 2,645,849.97 and Y = 376,330.00; thence along the North, West and South boundaries of said State Lease No. 8025, the following courses: South 69 degrees 47 minutes 47 seconds West 3,449.96 feet to its Northwest corner having Coordinates of X = 2,642,612.28 and Y = 375,138.53; South 1,320.00 feet to its Southwest corner having Coordinates of X = 2,642,612.28 and Y = 373,818.53; North 72 degrees 19 minutes 18 seconds East 604.20 feet to a point having Coordinates of X = 2,643,187.95 and Y = 374,002.01; North 80 degrees 52 minutes 11 seconds East 478.95 feet to a point having Coordinates of X = 2,643,660.83 and Y = 374,078.01; North 84 degrees 00 minutes 33 seconds East 1,006.06 feet to a point having Coordinates of X = 2,644,661.40 and Y = 374,183.01; North 87 degrees 58 minutes 31 seconds East 735.89 feet to a point having Coordinates of X = 2,645,396.83 and Y = 374,209.01; and South 87 degrees 29 minutes 24 seconds East 453.61 feet to its Southeast corner, also being the Southwest corner of State Lease No. 11700, as amended, having Coordinates of X = 2,645,850.00 and Y = 374,189.14; thence along the South boundary of said State lease No. 11700 the following courses: South 87 degrees 29 minutes 24 seconds East 551.07 feet to a point having Coordinates of X = 2,646,400.54 and Y = 374,165.01; South 84 degrees 00 minutes 50 seconds East 1,016.06 feet to a point having Coordinates of X = 2,647,411.06 and Y = 374,059.05; South 82 degrees 41 minutes 21 seconds East 1,463.85 feet to a point having Coordinates of X = 2,648,863.01 and Y = 373,872.77; South 78 degrees 57 minutes 44 seconds East 1,260.30 feet to its Southeast corner on the East boundary of said Block 1 having Coordinates of X = 2,650,100.00 and Y = 373,631.48; thence South 751.48 feet along the said East boundary of said Block 1 to its Southeast corner having Coordinates of X = 2,650,100.00 and

Y = 372,880.00; thence West 14,750.00 feet along the South boundary of said Block 1 to its Southwest corner having Coordinates of X = 2,635,350.00 and Y = 372,880.00; thence North 5,210.27 feet along the West boundary of said Block 1 to the point of beginning, containing approximately **1,040.14 acres**, all as more particularly outlined on a plat on file in the Office of Mineral Resources, Department of Natural Resources. All bearings, distances and coordinates are based on Louisiana Coordinate System of 1927, (North or South Zone), where applicable.

NOTE: The above description of the Tract nominated for lease has been provided and corrected, where required, exclusively by the nomination party. Any mineral lease selected from this Tract and awarded by the Louisiana State Mineral Board shall be without warranty of any kind, either express, implied, or statutory, including, but not limited to, the implied warranties of merchantability and fitness for a particular purpose. Should the mineral lease awarded by the Louisiana State Mineral Board be subsequently modified, cancelled or abrogated due to the existence of conflicting leases, operating agreements, private claims or other future obligations or conditions which may affect all or any portion of the leased Tract, it shall not relieve the Lessee of the obligation to pay any bonus due thereon to the Louisiana State Mineral Board, nor shall the Louisiana State Mineral Board be obligated to refund any consideration paid by the Lessor prior to such modification, cancellation, or abrogation, including, but not limited to, bonuses, rentals and royalties.

NOTE: The State of Louisiana does hereby reserve, and this lease shall be subject to, the imprescriptible right of surface use in the nature of a servitude in favor of the Department of Natural Resources, including its Offices and Commissions, for the sole purpose of implementing, constructing, servicing and maintaining approved coastal zone management and/or restoration projects. Utilization of any and all rights derived under this lease by the mineral lessee, its agents, successors or assigns, shall not interfere with nor hinder the reasonable surface use by the Department of Natural Resources, its Offices or Commissions, as herein above reserved.

Applicant: Energy Partners, Inc.

Bidder	Cash Payment	Price/ Acre	Rental	Oil	Gas	Other



ST BERNARD PARISH

CHANDELEUR SOUND AREA

Feet

2,000 0 2,000

P.O.B.  
X=2,635,350.00  
Y=378,090.27

SL 16300

SL 17453

SL 8522

SL 11999

SL 11584

SL 8669

SL 11700

SL 8025

BLOCK BS0001

BRETON SOUND AREA

BLOCK MP0004

MAIN PASS  
AREA, REVISED

**TRACT 35981 - Portion of Block 22, Main Pass Area, Revised, Plaquemines Parish, Louisiana**

All of the lands now or formerly constituting the beds and bottoms of all water bodies of every nature and description the title of which vests in the State of Louisiana, together with all islands arising therein and other lands formed by accretion or by reliction, where allowed by law, excepting tax adjudicated lands, and not presently under mineral lease on January 14, 2004, situated in Plaquemines Parish, Louisiana, and more particularly described as follows: Beginning at a point on the South line of Block 22, Main Pass Area, Revised, having Coordinates of X = 2,613,225.00 and Y = 322,330.00; thence West 7,375.00 feet along the South line of said Block 22 to its Southwest corner having Coordinates of X = 2,605,850.00 and Y = 322,330.00; thence North 14,750.00 feet along the West line of said Block 22 to its Northwest corner having Coordinates of X = 2,605,850.00 and Y = 337,080.00; thence East 7,375.00 feet along the North line of said Block 22 to a point having Coordinates of X = 2,613,225.00 and Y = 337,080.00; thence South 14,750.00 feet to the point of beginning, containing approximately **2,497.27 acres**, all as more particularly outlined on a plat on file in the Office of Mineral Resources, Department of Natural Resources. All bearings, distances and coordinates are based on Louisiana Coordinate System of 1927, (North or South Zone), where applicable.

NOTE: The above description of the Tract nominated for lease has been provided and corrected, where required, exclusively by the nomination party. Any mineral lease selected from this Tract and awarded by the Louisiana State Mineral Board shall be without warranty of any kind, either express, implied, or statutory, including, but not limited to, the implied warranties of merchantability and fitness for a particular purpose. Should the mineral lease awarded by the Louisiana State Mineral Board be subsequently modified, cancelled or abrogated due to the existence of conflicting leases, operating agreements, private claims or other future obligations or conditions which may affect all or any portion of the leased Tract, it shall not relieve the Lessee of the obligation to pay any bonus due thereon to the Louisiana State Mineral Board, nor shall the Louisiana State Mineral Board be obligated to refund any consideration paid by the Lessor prior to such modification, cancellation, or abrogation, including, but not limited to, bonuses, rentals and royalties.

NOTE: The State of Louisiana does hereby reserve, and this lease shall be subject to, the imprescriptible right of surface use in the nature of a servitude in favor of the Department of Natural Resources, including its Offices and Commissions, for the sole purpose of implementing, constructing, servicing and maintaining approved coastal zone management and/or restoration projects. Utilization of any and all rights derived under this lease by the mineral lessee, its agents, successors or assigns, shall not interfere with nor hinder the reasonable surface use by the Department of Natural Resources, its Offices or Commissions, as herein above reserved.

Applicant: Omni Energy, Inc.

Bidder	Cash Payment	Price/ Acre	Rental	Oil	Gas	Other



PLAQUEMINES PARISH

BLOCK MP0022

P.O.B.  
X=2,613,225.00  
Y=322,330.00

SL 16432

MAIN PASS AREA, REVISED

BLOCK MP0023

**TRACT 35982 - Portion of Block 22, Main Pass Area, Revised, Plaquemines Parish, Louisiana**

All of the lands now or formerly constituting the beds and bottoms of all water bodies of every nature and description the title of which vests in the State of Louisiana, together with all islands arising therein and other lands formed by accretion or by reliction, where allowed by law, excepting tax adjudicated lands, and not presently under mineral lease on January 14, 2004, situated in Plaquemines Parish, Louisiana, and more particularly described as follows: Beginning at a point on the South line of Block 22, Main Pass Area, Revised, having Coordinates of X = 2,613,225.00 and Y = 322,330.00; thence North 14,750.00 feet to a point on the North line of said Block 22 having Coordinates of X = 2,613,225.00 and Y = 337,080.00; thence East 7,375.00 feet along the North line of said Block 22 to its Northeast corner having Coordinates of X = 2,620,600.00 and Y = 337,080.00; thence South 11,742.75 feet along the East line of said Block 22 to a point, also being the Northeast corner of State Lease No. 16931 having Coordinates of X = 2,620,600.00 and Y = 325,337.25; thence along the boundary of said State Lease No. 16931 the following courses: North 86 degrees 41 minutes 52 seconds West 3,037.50 feet, South 36 degrees 16 minutes 19 seconds East 1,280.32 feet and South 78 degrees 44 minutes 15 seconds East 2,319.67 feet to the Southeast corner of said State Lease No. 16931, also being a point on the East line of said Block 22 having Coordinates of X = 2,620,600.00 and Y = 324,026.96; thence South 1,696.96 feet along the East line of said Block 22 to its Southeast corner having Coordinates of X = 2,620,600.00 and Y = 322,330.00; thence West 7,375.00 feet along the South line of said Block 22 to the point of beginning, containing approximately **2,428.65 acres**, all as more particularly outlined on a plat on file in the Office of Mineral Resources, Department of Natural Resources. All bearings, distances and coordinates are based on Louisiana Coordinate System of 1927, (North or South Zone), where applicable.

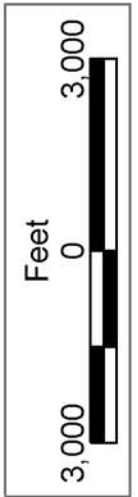
NOTE: The above description of the Tract nominated for lease has been provided and corrected, where required, exclusively by the nomination party. Any mineral lease selected from this Tract and awarded by the Louisiana State Mineral Board shall be without warranty of any kind, either express, implied, or statutory, including, but not limited to, the implied warranties of merchantability and fitness for a particular purpose. Should the mineral lease awarded by the Louisiana State Mineral Board be subsequently modified, cancelled or abrogated due to the existence of conflicting leases, operating agreements, private claims or other future obligations or conditions which may affect all or any portion of the leased Tract, it shall not relieve the Lessee of the obligation to pay any bonus due thereon to the Louisiana State Mineral Board, nor shall the Louisiana State Mineral Board be obligated to refund any consideration paid by the Lessor prior to such modification, cancellation, or abrogation, including, but not limited to, bonuses, rentals and royalties.

NOTE: The State of Louisiana does hereby reserve, and this lease shall be subject to, the imprescriptible right of surface use in the nature of a servitude in favor of the Department of Natural Resources, including its Offices and Commissions, for the sole purpose of implementing, constructing, servicing and maintaining approved coastal zone management and/or restoration projects. Utilization of any and all rights derived under this lease by the mineral lessee, its agents, successors or assigns, shall not interfere with nor hinder the reasonable surface use by the Department of Natural Resources, its Offices or Commissions, as herein above reserved.

Applicant: Omni Energy, Inc.

Bidder	Cash Payment	Price/ Acre	Rental	Oil	Gas	Other





PLAQUEMINES PARISH

BLOCK MP0021

SL 17247

SL 16932

SL 16931

MAIN PASS AREA, REVISED

BLOCK MP0022

P.O.B.  
X=2,613,225.00  
Y=322,330.00

SL 16432

**TRACT 35983 - Portion of Block 23, Main Pass Area, Revised, Plaquemines Parish, Louisiana**

All of the lands now or formerly constituting the beds and bottoms of all water bodies of every nature and description the title of which vests in the State of Louisiana, together with all islands arising therein and other lands formed by accretion or by reliction, where allowed by law, excepting tax adjudicated lands, and not presently under mineral lease on January 14, 2004, situated in Plaquemines Parish, Louisiana, and more particularly described as follows: Beginning at the Southeast corner of Block 23, Main Pass Area, Revised, having Coordinates of X = 2,605,850.00 and Y = 322,330.00; thence West approximately 8,633 feet to the Southwest corner of said Block 23 having a Coordinate of Y = 322,330.00; thence Northeasterly approximately 4,131 feet to a point; thence Northwesterly approximately 6,061 feet to a point; thence Northwesterly approximately 268 feet to a point; thence North 4,749 feet to a point on the North line of said Block 23 having Coordinates of X = 2,598,475.00 and Y = 337,080.00; thence East 7,375.00 feet along the North line of said Block 23 to its Northeast corner having Coordinates of X = 2,605,850.00 and Y = 337,080.00; thence South 14,750.00 feet along the East line of said Block 23 to the point of beginning, **LESS AND EXCEPT**, all that portion of State Lease No. 195, as amended, that may lie within the above described tract, containing approximately **2,498 acres**, all as more particularly outlined on a plat on file in the Office of Mineral Resources, Department of Natural Resources. All bearings, distances and coordinates are based on Louisiana Coordinate System of 1927, (North or South Zone), where applicable.

NOTE: The above description of the Tract nominated for lease has been provided and corrected, where required, exclusively by the nomination party. Any mineral lease selected from this Tract and awarded by the Louisiana State Mineral Board shall be without warranty of any kind, either express, implied, or statutory, including, but not limited to, the implied warranties of merchantability and fitness for a particular purpose. Should the mineral lease awarded by the Louisiana State Mineral Board be subsequently modified, cancelled or abrogated due to the existence of conflicting leases, operating agreements, private claims or other future obligations or conditions which may affect all or any portion of the leased Tract, it shall not relieve the Lessee of the obligation to pay any bonus due thereon to the Louisiana State Mineral Board, nor shall the Louisiana State Mineral Board be obligated to refund any consideration paid by the Lessor prior to such modification, cancellation, or abrogation, including, but not limited to, bonuses, rentals and royalties.

NOTE: The State of Louisiana does hereby reserve, and this lease shall be subject to, the imprescriptible right of surface use in the nature of a servitude in favor of the Department of Natural Resources, including its Offices and Commissions, for the sole purpose of implementing, constructing, servicing and maintaining approved coastal zone management and/or restoration projects. Utilization of any and all rights derived under this lease by the mineral lessee, its agents, successors or assigns,

shall not interfere with nor hinder the reasonable surface use by the Department of Natural Resources, its Offices or Commissions, as herein above reserved.

Applicant: Omni Energy, Inc.

Bidder	Cash Payment	Price/ Acre	Rental	Oil	Gas	Other

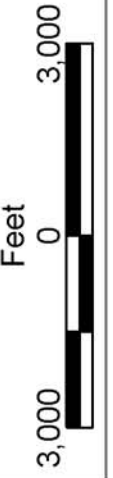


MAIN PASS AREA, REVISED

BLOCK MP0022

BLOCK MP0023

P.O.B.  
X=2,605,850.00  
Y=322,330.00



PLAQUEMINES PARISH

SL 195

**TRACT 35984 - Lafourche Parish, Louisiana**

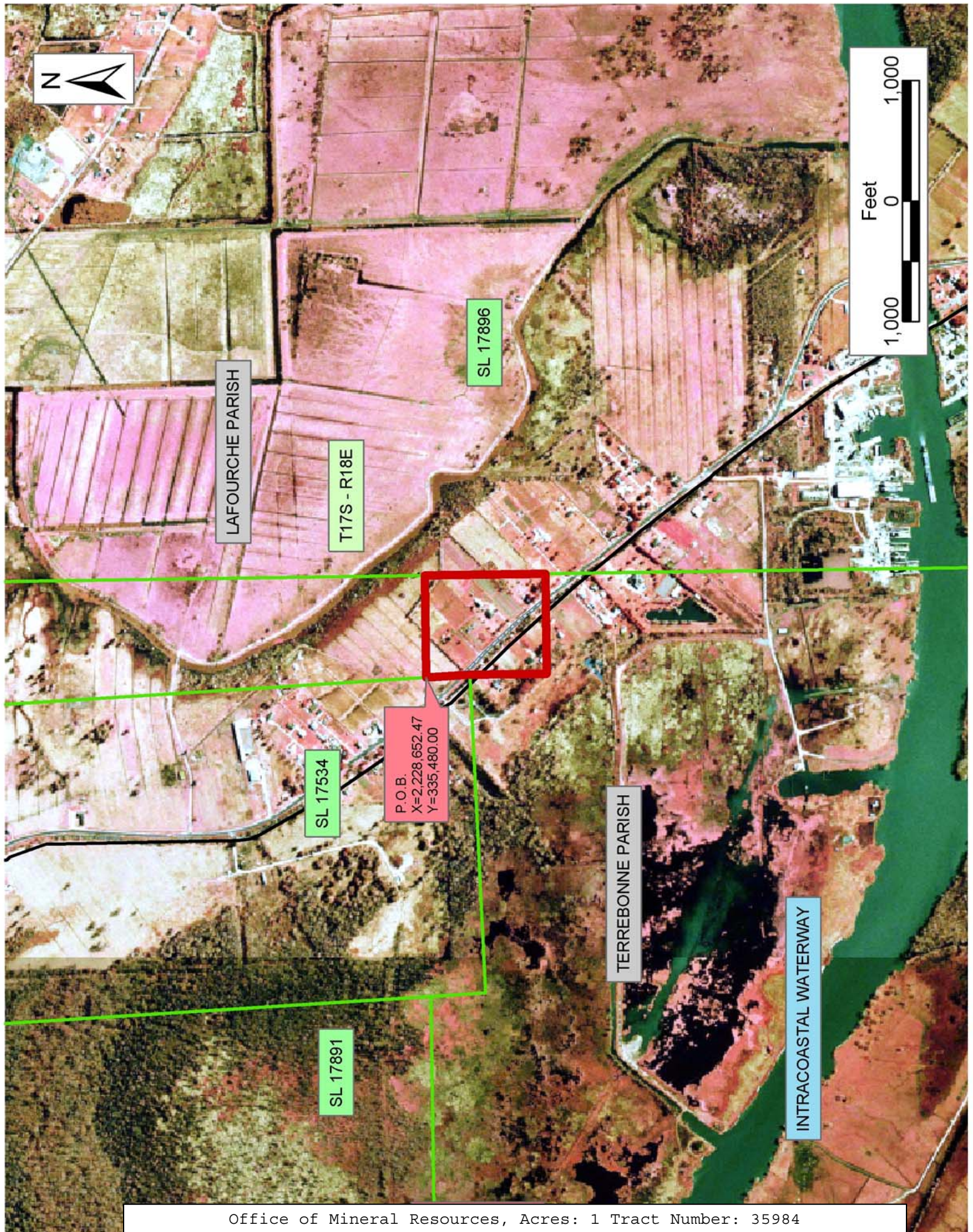
All of the lands now or formerly constituting the beds and bottoms of all water bodies of every nature and description the title of which vests in the State of Louisiana, together with all islands arising therein and other lands formed by accretion or by reliction, where allowed by law, excepting tax adjudicated lands, and not presently under mineral lease on January 14, 2004, situated in Lafourche Parish, Louisiana, and more particularly described as follows: Beginning at a point on the East line of State Lease No. 17534, having Coordinates of X = 2,228,652.47 and Y = 335,480.00; thence East 847.53 feet to a point having Coordinates of X = 2,229,500.00 and Y = 335,480.00; thence South 1000.00 feet to a point having Coordinates of X = 2,229,500.00 and Y = 334,480.00; thence West 829.55 feet to a point having Coordinates of X = 2,228,670.45 and Y = 334,480.00; thence North 637.79 feet to the Southeast corner of said State Lease No. 17534, having Coordinates of X = 2,228,670.45 and Y = 335,117.79; thence North 02 degrees 50 minutes 29 seconds West 362.66 feet to the point of beginning, **LESS AND EXCEPT** all that portion of the above described tract that lies within Terrebonne Parish; containing approximately **1 acre**, all as more particularly outlined on a plat on file in the Office of Mineral Resources, Department of Natural Resources. All bearings, distances and coordinates are based on Louisiana Coordinate System of 1927, (North or South Zone), where applicable.

NOTE: The above description of the Tract nominated for lease has been provided and corrected, where required, exclusively by the nomination party. Any mineral lease selected from this Tract and awarded by the Louisiana State Mineral Board shall be without warranty of any kind, either express, implied, or statutory, including, but not limited to, the implied warranties of merchantability and fitness for a particular purpose. Should the mineral lease awarded by the Louisiana State Mineral Board be subsequently modified, cancelled or abrogated due to the existence of conflicting leases, operating agreements, private claims or other future obligations or conditions which may affect all or any portion of the leased Tract, it shall not relieve the Lessee of the obligation to pay any bonus due thereon to the Louisiana State Mineral Board, nor shall the Louisiana State Mineral Board be obligated to refund any consideration paid by the Lessor prior to such modification, cancellation, or abrogation, including, but not limited to, bonuses, rentals and royalties.

Applicant: Office Of Mineral Resources

Bidder	Cash Payment	Price/ Acre	Rental	Oil	Gas	Other







**TRACT 35985 - Portion of Block 25, Main Pass Area, Revised, Plaquemines Parish, Louisiana**

All of the lands now or formerly constituting the beds and bottoms of all water bodies of every nature and description the title of which vests in the State of Louisiana, together with all islands arising therein and other lands formed by accretion or by reliction, where allowed by law, excepting tax adjudicated lands, and not presently under mineral lease on January 14, 2004, situated in Plaquemines Parish, Louisiana, and more particularly described as follows: Beginning at the Northeast corner of Block 25, Main Pass Area, Revised, having Coordinates of X = 2,620,600.00 and Y = 322,330.00; thence South 9,565.00 feet along the East line of said Block 25 to a point, also being the Northeast corner of State Lease No. 17625 having Coordinates of X = 2,620,600.00 and Y = 312,765.00; thence along the boundary of said State Lease No. 17625 the following courses: West 1,700.00 feet and South 5,185.00 feet to the Southwest corner of said State Lease No. 17625, also being a point on the South line of said Block 25 having Coordinates of X = 2,618,900.00 and Y = 307,580.00; thence West 5,675.00 feet along the South line of said Block 25 to a point having Coordinates of X = 2,613,225.00 and Y = 307,580.00; thence North 8,150.00 feet to a point on the Southern boundary of State Lease No. 16432 having Coordinates of X = 2,613,225.00 and Y = 315,730.00; thence along the boundary of said State Lease No. 16432 the following course: East 1,325.00 feet, South 775.00 feet, East 699.99 feet, North 40 degrees 54 minutes 52 seconds East 3,969.89 feet and North 53 degrees 54 minutes 06 seconds West 7,425.67 feet to the Northeast corner of said State Lease No. 16432, also being a point on the North line of said Block 25 having Coordinates of X = 2,611,850.00 and Y = 322,330.00; thence East 8,750.00 feet to the point of beginning, containing approximately **1,926.29 acres**, all as more particularly outlined on a plat on file in the Office of Mineral Resources, Department of Natural Resources. All bearings, distances and coordinates are based on Louisiana Coordinate System of 1927, (North or South Zone), where applicable.

NOTE: The above description of the Tract nominated for lease has been provided and corrected, where required, exclusively by the nomination party. Any mineral lease selected from this Tract and awarded by the Louisiana State Mineral Board shall be without warranty of any kind, either express, implied, or statutory, including, but not limited to, the implied warranties of merchantability and fitness for a particular purpose. Should the mineral lease awarded by the Louisiana State Mineral Board be subsequently modified, cancelled or abrogated due to the existence of conflicting leases, operating agreements, private claims or other future obligations or conditions which may affect all or any portion of the leased Tract, it shall not relieve the Lessee of the obligation to pay any bonus due thereon to the Louisiana State Mineral Board, nor shall the Louisiana State Mineral Board be obligated to refund any consideration paid by the Lessor prior to such modification, cancellation, or abrogation, including, but not limited to, bonuses, rentals and royalties.



NOTE: The State of Louisiana does hereby reserve, and this lease shall be subject to, the imprescriptible right of surface use in the nature of a servitude in favor of the Department of Natural Resources, including its Offices and Commissions, for the sole purpose of implementing, constructing, servicing and maintaining approved coastal zone management and/or restoration projects. Utilization of any and all rights derived under this lease by the mineral lessee, its agents, successors or assigns, shall not interfere with nor hinder the reasonable surface use by the Department of Natural Resources, its Offices or Commissions, as herein above reserved.

Applicant: Omni Energy, Inc.

Bidder	Cash Payment	Price/ Acre	Rental	Oil	Gas	Other



P.O.B.  
X=2,620,600.00  
Y=322,330.00

BLOCK MP0026



SL 17626

SL 17625

SL 16432

BLOCK MP0025

PLAQUEMINES PARISH

MAIN PASS AREA, REVISED

**TRACT 35986 - Portion of Block 24, Main Pass Area, Revised, Plaquemines Parish, Louisiana**

All of the lands now or formerly constituting the beds and bottoms of all water bodies of every nature and description the title of which vests in the State of Louisiana, together with all islands arising therein and other lands formed by accretion or by reliction, where allowed by law, excepting tax adjudicated lands, and not presently under mineral lease on January 14, 2004, situated in Plaquemines Parish, Louisiana, and more particularly described as follows: Beginning at the Northeast corner of Block 24, Main Pass Area, Revised, having Coordinates of X = 2,605,850.00 and Y = 322,330.00; thence South 3,862.93 feet along the East line of said Block 24 to a point, also being the Northeast corner of State Lease No. 17049 having Coordinates of X = 2,605,850.00 and Y = 318,467.07; thence along the boundary of said State Lease No. 17049 the following courses: West 4,500.00 feet and South 1,087.07 feet to the Southwest corner of said State Lease No. 17049, also being the most Northerly Northwest corner of State Lease No. 17048 having Coordinates of X = 2,601,350.00 and Y = 317,380.00; thence along the boundary of said State Lease No. 17048 the following courses: South 2,425.00 feet, West 702.15 feet and South 672.54 feet to a point on the West line of said State Lease No. 17048; also being a point on the Northern boundary line of State Lease No. 2410, as amended, having Coordinates of X = 2,600,647.85 and Y = 314,282.46; thence along the boundary of said State Lease No. 2410 the following courses: Northwesterly and Southwesterly to the most Western Northwest corner of said State Lease No. 2410 which lies on the Western boundary of said Block 24; thence Northeasterly approximately 6,045 feet to the Northwest corner of said Block 24 having a Coordinate of Y = 322,330.00; thence East approximately 8,633 feet along the North line of said Block 24 to the point of beginning, **LESS AND EXCEPT** all that portion of State Lease No. 195, as amended, that may lie within the above described tract, containing approximately **1,268 acres**, all as more particularly outlined on a plat on file in the Office of Mineral Resources, Department of Natural Resources. All bearings, distances and coordinates are based on Louisiana Coordinate System of 1927, (North or South Zone), where applicable.

NOTE: The above description of the Tract nominated for lease has been provided and corrected, where required, exclusively by the nomination party. Any mineral lease selected from this Tract and awarded by the Louisiana State Mineral Board shall be without warranty of any kind, either express, implied, or statutory, including, but not limited to, the implied warranties of merchantability and fitness for a particular purpose. Should the mineral lease awarded by the Louisiana State Mineral Board be subsequently modified, cancelled or abrogated due to the existence of conflicting leases, operating agreements, private claims or other future obligations or conditions which may affect all or any portion of the leased Tract, it shall not relieve the Lessee of the obligation to pay any bonus due thereon to the Louisiana State Mineral Board, nor shall the Louisiana State Mineral Board be obligated to refund any consideration

paid by the Lessor prior to such modification, cancellation, or abrogation, including, but not limited to, bonuses, rentals and royalties.

NOTE: The State of Louisiana does hereby reserve, and this lease shall be subject to, the imprescriptible right of surface use in the nature of a servitude in favor of the Department of Natural Resources, including its Offices and Commissions, for the sole purpose of implementing, constructing, servicing and maintaining approved coastal zone management and/or restoration projects. Utilization of any and all rights derived under this lease by the mineral lessee, its agents, successors or assigns, shall not interfere with nor hinder the reasonable surface use by the Department of Natural Resources, its Offices or Commissions, as herein above reserved.

Applicant: Omni Energy, Inc.

Bidder	Cash Payment	Price/ Acre	Rental	Oil	Gas	Other



P.O.B.  
X=2,605,850.00  
Y=322,330.00

PLAQUEMINES PARISH

MAIN PASS AREA, REVISED

BLOCK MP0025

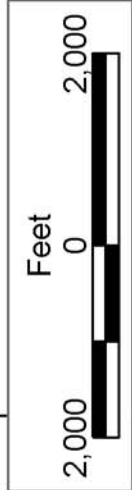
SL 17049

SL 17048

BLOCK MP0024

SL 2410

SL 195



**TRACT 35987 - Portion of Block 25, Main Pass Area, Revised, Plaquemines Parish, Louisiana**

All of the lands now or formerly constituting the beds and bottoms of all water bodies of every nature and description the title of which vests in the State of Louisiana, together with all islands arising therein and other lands formed by accretion or by reliction, where allowed by law, excepting tax adjudicated lands, and not presently under mineral lease on January 14, 2004, situated in Plaquemines Parish, Louisiana, and more particularly described as follows: Beginning at the Northwest corner of Block 25, Main Pass Area, Revised, having Coordinates of X = 2,605,850.00 and Y = 322,330.00; thence East 2,200.00 feet along the North line of said Block 25 to a point, also being the Northwest corner of State Lease No. 16432 having Coordinates of X = 2,608,050.00 and Y = 322,330.00; thence along the boundary of said State Lease No. 16432 the following courses: South 28 degrees 28 minutes 27 seconds East 8,389.91 feet, North 775.00 feet and East 1,175.00 feet to a point on the Southern boundary of said State Lease No. 16432 having Coordinates of X = 2,613,225.00 and Y = 315,730.00; thence South 8,150.00 feet to a point on the South line of said Block 25 having Coordinates of X = 2,613,225.00 and Y = 307,580.00; thence West 7,375.00 feet along the South line of said Block 25 to its Southwest corner having Coordinates of X = 2,605,850.00 and Y = 307,580.00; thence North 14,750.00 feet along the West line of said Block 25 to the point of beginning, **LESS AND EXCEPT** those portions of State Lease No. 16692, as amended and State Lease No. 16819 as amended that lie within the above described tract, being more fully described as follows: Commencing at the Southwest corner of said Block 25 having Coordinates of X = 2,605,850.00 and Y = 307,580.00; thence North 55 degrees 52 minutes 31 seconds East 6,257.41 to the Southeast corner of State Lease No. 16692, as amended having Coordinates of X = 2,611,030.00 and Y = 311,090.38; thence along the boundary of said State Lease No. 16692 the following courses: North 77 degrees 00 minutes 19 seconds West 1,621.53 feet, and North 300.00 feet to the Southeast corner of State Lease No. 16819, as amended having Coordinates of X = 2,609,450.00 and Y = 311,755.00; thence along the boundary of said State Lease No. 16819 the following courses: North 59 degrees 39 minutes 02 seconds West 1,438.67 feet, North 2,604.93 feet, East 750.00 feet, South 28 degrees 28 minutes 25 seconds East 149.99 feet, and East 420.00 feet to its Northeast corner, also being the Northwest corner of said State Lease No. 16692 having Coordinates of X = 2,609,450.00 and Y = 314,955.00; thence along the boundary of said State Lease No. 16692 the following courses: East 1,580.00 feet and South 3,864.62 feet to its Southeast corner; containing approximately **1,763.84 acres**, all as more particularly outlined on a plat on file in the Office of Mineral Resources, Department of Natural Resources. All bearings, distances and coordinates are based on Louisiana Coordinate System of 1927, (North or South Zone), where applicable.

NOTE: The above description of the Tract nominated for lease has been provided and corrected, where required, exclusively by the nomination party. Any mineral lease selected from this Tract and awarded by the

Louisiana State Mineral Board shall be without warranty of any kind, either express, implied, or statutory, including, but not limited to, the implied warranties of merchantability and fitness for a particular purpose. Should the mineral lease awarded by the Louisiana State Mineral Board be subsequently modified, cancelled or abrogated due to the existence of conflicting leases, operating agreements, private claims or other future obligations or conditions which may affect all or any portion of the leased Tract, it shall not relieve the Lessee of the obligation to pay any bonus due thereon to the Louisiana State Mineral Board, nor shall the Louisiana State Mineral Board be obligated to refund any consideration paid by the Lessor prior to such modification, cancellation, or abrogation, including, but not limited to, bonuses, rentals and royalties.

NOTE: The State of Louisiana does hereby reserve, and this lease shall be subject to, the imprescriptible right of surface use in the nature of a servitude in favor of the Department of Natural Resources, including its Offices and Commissions, for the sole purpose of implementing, constructing, servicing and maintaining approved coastal zone management and/or restoration projects. Utilization of any and all rights derived under this lease by the mineral lessee, its agents, successors or assigns, shall not interfere with nor hinder the reasonable surface use by the Department of Natural Resources, its Offices or Commissions, as herein above reserved.

Applicant: Omni Energy, Inc.

Bidder	Cash Payment	Price/ Acre	Rental	Oil	Gas	Other

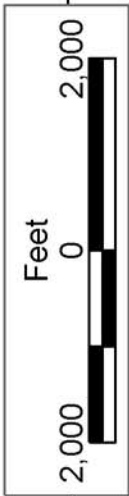


MAIN PASS AREA, REVISED

SL 16432

BLOCK MP0025

PLAQUEMINES PARISH

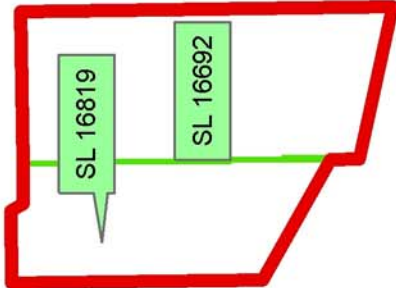


P.O.B.  
X=2,605,850.00  
Y=322,330.00

SL 17049

SL 17048

BLOCK MP0024



SL 16819

SL 16692

SL 17572



**TRACT 35988 - Jefferson and Lafourche Parishes, Louisiana**

All of the lands now or formerly constituting the beds and bottoms of all water bodies of every nature and description the title of which vests in the State of Louisiana, together with all islands arising therein and other lands formed by accretion or by reliction, where allowed by law, excepting tax adjudicated lands, and not presently under mineral lease on January 14, 2004, situated in Jefferson and Lafourche Parishes, Louisiana, and more particularly described as follows: Beginning at a point having Coordinates of X = 2,383,795.00 and Y = 320,860.00; thence South 3,769.81 feet to a point on the Northern boundary of State Lease No. 2453, as amended having Coordinates of X = 2,383,795.00 and Y = 317,090.19; thence along the boundary of said State Lease No. 2453 the following courses: West 246.23 feet, North 02 degrees 22 minutes 40 seconds West 1,361.29 feet, North 02 degrees 22 minutes 35 seconds West 1,526.18 feet, South 88 degrees 58 minutes 50 seconds West 3,951.04 feet, and South 8,394.79 feet to its Southwest corner and the Northwest corner of State Lease No. 16865 having Coordinates of X = 2,379,478.60 and Y = 311,510.09; thence South 23 degrees 35 minutes 52 seconds West 2,379.00 feet on the West line of said State Lease No. 16865 to its Southwest corner and the Northwest corner of State Lease No. 2383, as amended having Coordinates of X = 2,378,526.26 and Y = 309,330.03; thence South 650.03 feet on the West line of said State Lease No. 2383 to a point having Coordinates of X = 2,378,526.26 and Y = 308,680.00; thence West 1,667.00 feet to a point on the East line of State Lease No. 17613 having Coordinates of X = 2,376,859.26 and Y = 308,680.00; thence along the boundary of said State Lease No. 17613 the following courses: North 04 degrees 19 minutes 03 seconds East 6,518.50 feet, South 69 degrees 13 minutes 02 seconds West 3,551.06 feet, and South 09 degrees 16 minutes 50 seconds West 5,309.50 feet to a point having Coordinates of X = 2,373,173.73 and Y = 308,680.00; thence West 548.73 feet to a point having Coordinates of X = 2,372,625.00 and Y = 308,680.00; thence North approximately 6,379 feet to a point on the Southern boundary of State Lease No. 1972, as amended having a Coordinate of X = 2,372,625.00; thence Northeasterly along the boundary of said State Lease No. 1972 to the point of intersection with an East West line having a Coordinate of Y = 320,860.00; thence East approximately 4,348 feet to the point of beginning, containing approximately **650 acres**, all as more particularly outlined on a plat on file in the Office of Mineral Resources, Department of Natural Resources. All bearings, distances and coordinates are based on Louisiana Coordinate System of 1927, (North or South Zone), where applicable.

NOTE: The above description of the Tract nominated for lease has been provided and corrected, where required, exclusively by the nomination party. Any mineral lease selected from this Tract and awarded by the Louisiana State Mineral Board shall be without warranty of any kind, either express, implied, or statutory, including, but not limited to, the implied warranties of merchantability and fitness for a particular purpose. Should the mineral lease awarded by the Louisiana State Mineral Board be subsequently modified, cancelled or abrogated due to the

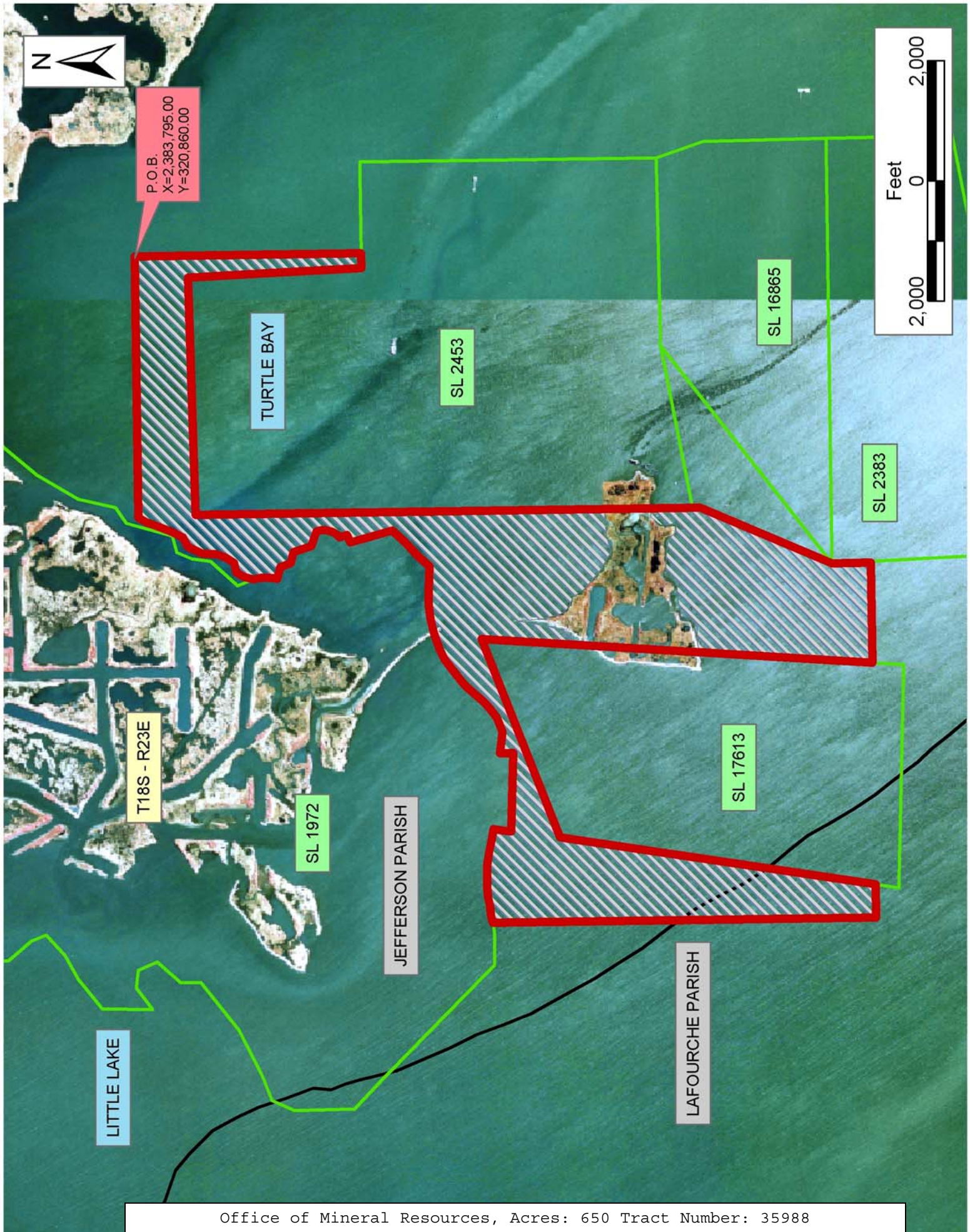
existence of conflicting leases, operating agreements, private claims or other future obligations or conditions which may affect all or any portion of the leased Tract, it shall not relieve the Lessee of the obligation to pay any bonus due thereon to the Louisiana State Mineral Board, nor shall the Louisiana State Mineral Board be obligated to refund any consideration paid by the Lessor prior to such modification, cancellation, or abrogation, including, but not limited to, bonuses, rentals and royalties.

NOTE: The State of Louisiana does hereby reserve, and this lease shall be subject to, the imprescriptible right of surface use in the nature of a servitude in favor of the Department of Natural Resources, including its Offices and Commissions, for the sole purpose of implementing, constructing, servicing and maintaining approved coastal zone management and/or restoration projects. Utilization of any and all rights derived under this lease by the mineral lessee, its agents, successors or assigns, shall not interfere with nor hinder the reasonable surface use by the Department of Natural Resources, its Offices or Commissions, as herein above reserved.

NOTE: The Department of Wildlife and Fisheries has designated certain areas in the coastal waters of the State of Louisiana as Oyster Seed Bed Areas. The exact location of those Seed Bed Areas must be obtained from the Department of Wildlife and Fisheries and any work done under a mineral lease from the State of Louisiana may necessarily be conducted in conformity with the rules and regulations promulgated by the said Department of Wildlife and Fisheries for Oyster Seed Bed Areas.

Applicant: Harold J. Anderson, Inc.

Bidder	Cash Payment	Price/ Acre	Rental	Oil	Gas	Other





**TRACT 35989 - Portion of Block 24, Main Pass Area, Revised, Plaquemines Parish, Louisiana**

All of the lands now or formerly constituting the beds and bottoms of all water bodies of every nature and description the title of which vests in the State of Louisiana, together with all islands arising therein and other lands formed by accretion or by reliction, where allowed by law, excepting tax adjudicated lands, and not presently under mineral lease on January 14, 2004, situated in Plaquemines Parish, Louisiana, and more particularly described as follows: Beginning at the Southeast corner of Block 24, Main Pass Area, Revised, having Coordinates of X = 2,605,850.00 and Y = 307,580.00; thence West 8,123.90 feet along the South line of said Block 24 to a point, also being the Southeast corner of State Lease No. 17047 having Coordinates of X = 2,597,726.10 and Y = 307,580.00; thence along the boundary of said State Lease No. 17047 the following courses: North 3,783.00 feet, West 2,649.00 feet and South 3,783.00 feet to the Southwest corner of said State Lease No. 17047, also being a point on the South line of said Block 24 having Coordinates of X = 2,595,077.10 and Y = 307,580.00; thence West approximately 1,265 feet to the Southwest corner of said Block 24 having a Coordinate of Y = 307,580.00; thence Northerly along the West line of said Block 24 approximately 6,356 feet to a point; thence Northeasterly along said West line approximately 1,755 feet to the most Western Southwest corner of State Lease No. 2410, as amended; thence along the boundary of said State Lease No. 2410 the following courses: Southeasterly and Northeasterly to a point on the Southern boundary line of said State Lease No. 2410, also being a point on the West line of State Lease No. 17048, said point having Coordinates of X = 2,600,647.85 and Y = 313,359.03; thence along the boundary of said State Lease No. 17048 the following courses: South 1,379.03 feet, East 2,722.15 feet, North 2,970.36 feet and East 2,480.00 feet to the most Easterly Southeast corner of said State Lease No. 17048, also being a point on the East line of said Block 24 having Coordinates of X = 2,605,850.00 and Y = 314,950.36; thence South 7,370.36 feet along the East line of said Block 24 to the point of beginning, containing approximately **1,460 acres**, all as more particularly outlined on a plat on file in the Office of Mineral Resources, Department of Natural Resources. All bearings, distances and coordinates are based on Louisiana Coordinate System of 1927, (North or South Zone), where applicable.

NOTE: The above description of the Tract nominated for lease has been provided and corrected, where required, exclusively by the nomination party. Any mineral lease selected from this Tract and awarded by the Louisiana State Mineral Board shall be without warranty of any kind, either express, implied, or statutory, including, but not limited to, the implied warranties of merchantability and fitness for a particular purpose. Should the mineral lease awarded by the Louisiana State Mineral Board be subsequently modified, cancelled or abrogated due to the existence of conflicting leases, operating agreements, private claims or other future obligations or conditions which may affect all or any portion of the leased Tract, it shall not relieve the Lessee of the obligation to

pay any bonus due thereon to the Louisiana State Mineral Board, nor shall the Louisiana State Mineral Board be obligated to refund any consideration paid by the Lessor prior to such modification, cancellation, or abrogation, including, but not limited to, bonuses, rentals and royalties.

NOTE: The State of Louisiana does hereby reserve, and this lease shall be subject to, the imprescriptible right of surface use in the nature of a servitude in favor of the Department of Natural Resources, including its Offices and Commissions, for the sole purpose of implementing, constructing, servicing and maintaining approved coastal zone management and/or restoration projects. Utilization of any and all rights derived under this lease by the mineral lessee, its agents, successors or assigns, shall not interfere with nor hinder the reasonable surface use by the Department of Natural Resources, its Offices or Commissions, as herein above reserved.

Applicant: Omni Energy, Inc.

Bidder	Cash Payment	Price/ Acre	Rental	Oil	Gas	Other

