

TRACT 35970 - Cameron Parish, Louisiana

All of the lands now or formerly constituting the beds and bottoms of all water bodies of every nature and description the title of which vests in the State of Louisiana, together with all islands arising therein and other lands formed by accretion or by reliction, where allowed by law, excepting tax adjudicated lands, and not presently under mineral lease on January 14, 2004, situated in Cameron Parish, Louisiana, and more particularly described as follows: Beginning at a point having Coordinates of X = 1,559,434.00 and Y = 448,218.00; thence West 3,544.00 feet to a point having Coordinates of X = 1,555,890.00 and Y = 448,218.00; thence North 10,769.36 feet to a point on the South line of State Lease No. 377, as amended, having Coordinates of X = 1,555,890.00 and Y = 458,987.36; thence South 89 degrees 17 minutes 54 seconds East 1,733.43 feet along the South line of said State Lease No. 377, to its Southeast corner having Coordinates of X = 1,557,623.30 and Y = 458,966.13; thence East 1,288.58 feet to a point on the boundary of State Lease No. 1812, as amended, having Coordinates of X = 1,558,911.88 and Y = 458,966.13; thence along the boundary of said State Lease No. 1812, the following courses: South 33 degrees 58 minutes 54 seconds East 802.25 feet to a point having Coordinates of X = 1,559,360.28 and Y = 458,300.89 and South 53 degrees 06 minutes 18 seconds East 92.18 feet to a point having Coordinates of X = 1,559,434.00 and Y = 458,245.55; thence South 10,027.55 feet to the point of beginning, containing **870.28 acres**, all as more particularly outlined on a plat on file in the Office of Mineral Resources, Department of Natural Resources. All bearings, distances and coordinates are based on Louisiana Coordinate System of 1927, (North or South Zone), where applicable.

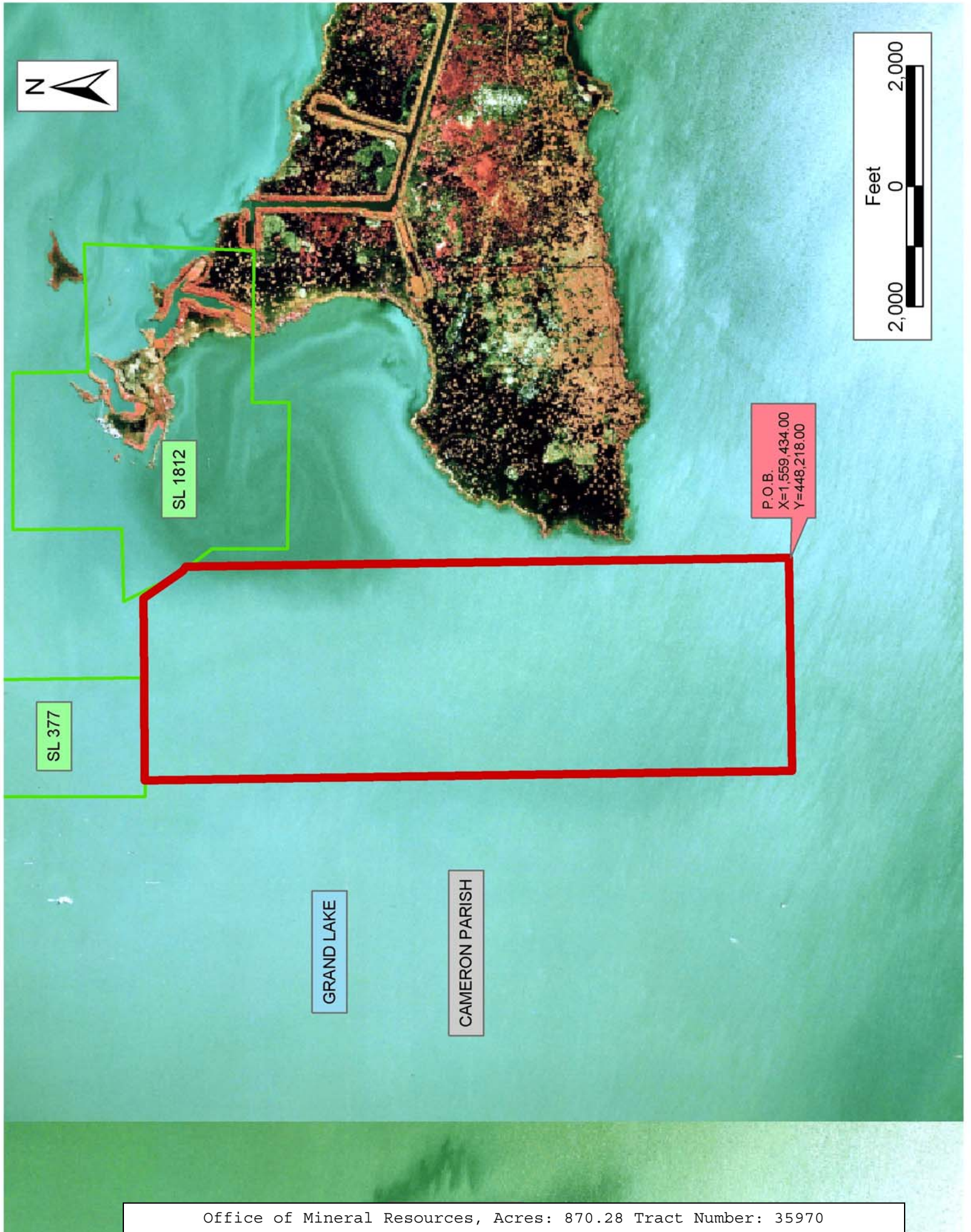
NOTE: The above description of the Tract nominated for lease has been provided and corrected, where required, exclusively by the nomination party. Any mineral lease selected from this Tract and awarded by the Louisiana State Mineral Board shall be without warranty of any kind, either express, implied, or statutory, including, but not limited to, the implied warranties of merchantability and fitness for a particular purpose. Should the mineral lease awarded by the Louisiana State Mineral Board be subsequently modified, cancelled or abrogated due to the existence of conflicting leases, operating agreements, private claims or other future obligations or conditions which may affect all or any portion of the leased Tract, it shall not relieve the Lessee of the obligation to pay any bonus due thereon to the Louisiana State Mineral Board, nor shall the Louisiana State Mineral Board be obligated to refund any consideration paid by the Lessor prior to such modification, cancellation, or abrogation, including, but not limited to, bonuses, rentals and royalties.

NOTE: The State of Louisiana does hereby reserve, and this lease shall be subject to, the imprescriptible right of surface use in the nature of a servitude in favor of the Department of Natural Resources, including its Offices and Commissions, for the sole purpose of implementing, constructing, servicing and maintaining approved coastal zone management

and/or restoration projects. Utilization of any and all rights derived under this lease by the mineral lessee, its agents, successors or assigns, shall not interfere with nor hinder the reasonable surface use by the Department of Natural Resources, its Offices or Commissions, as herein above reserved.

Applicant: Mohat Properties, L.L.C.

Bidder	Cash Payment	Price/ Acre	Rental	Oil	Gas	Other



TRACT 35971 - Cameron Parish, Louisiana

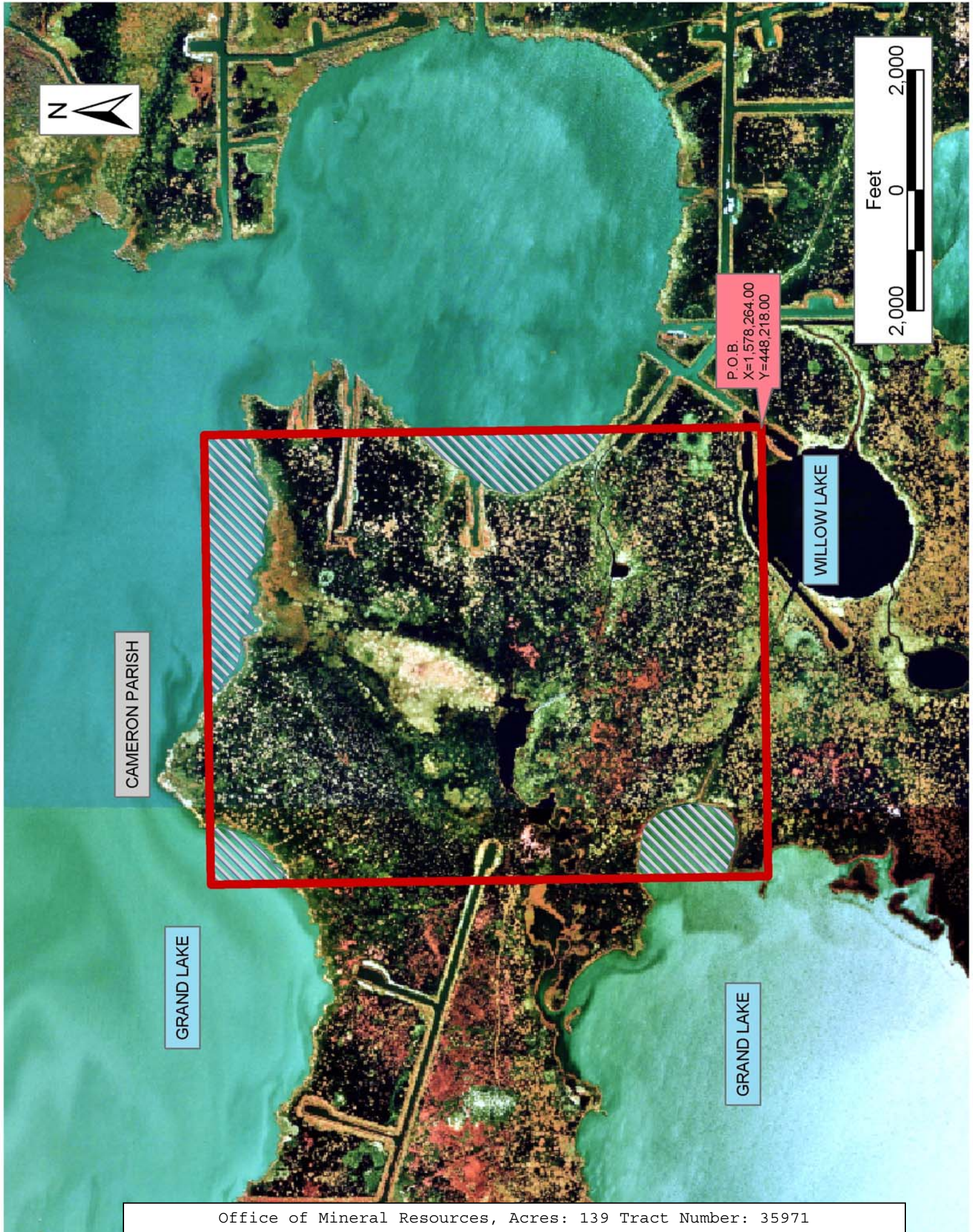
All of the lands now or formerly constituting the beds and bottoms of all water bodies of every nature and description the title of which vests in the State of Louisiana, together with all islands arising therein and other lands formed by accretion or by reliction, where allowed by law, excepting tax adjudicated lands, and not presently under mineral lease on January 14, 2004, situated in Cameron Parish, Louisiana, and more particularly described as follows: Beginning at a point having Coordinates of X = 1,578,264.00 and Y = 448,218.00; thence West 7,470.00 feet to a point having Coordinates of X = 1,570,794.00 and Y = 448,218.00; thence North 9,260.00 feet to a point having Coordinates of X = 1,570,794.00 and Y = 457,478.00; thence East 7,470.00 feet to a point having Coordinates of X = 1,578,264.00 and Y = 457,478.00; thence South 9,260.00 feet to the point of beginning, containing approximately **139 acres**, all as more particularly outlined on a plat on file in the Office of Mineral Resources, Department of Natural Resources. All bearings, distances and coordinates are based on Louisiana Coordinate System of 1927, (North or South Zone), where applicable.

NOTE: The above description of the Tract nominated for lease has been provided and corrected, where required, exclusively by the nomination party. Any mineral lease selected from this Tract and awarded by the Louisiana State Mineral Board shall be without warranty of any kind, either express, implied, or statutory, including, but not limited to, the implied warranties of merchantability and fitness for a particular purpose. Should the mineral lease awarded by the Louisiana State Mineral Board be subsequently modified, cancelled or abrogated due to the existence of conflicting leases, operating agreements, private claims or other future obligations or conditions which may affect all or any portion of the leased Tract, it shall not relieve the Lessee of the obligation to pay any bonus due thereon to the Louisiana State Mineral Board, nor shall the Louisiana State Mineral Board be obligated to refund any consideration paid by the Lessor prior to such modification, cancellation, or abrogation, including, but not limited to, bonuses, rentals and royalties.

NOTE: The State of Louisiana does hereby reserve, and this lease shall be subject to, the imprescriptible right of surface use in the nature of a servitude in favor of the Department of Natural Resources, including its Offices and Commissions, for the sole purpose of implementing, constructing, servicing and maintaining approved coastal zone management and/or restoration projects. Utilization of any and all rights derived under this lease by the mineral lessee, its agents, successors or assigns, shall not interfere with nor hinder the reasonable surface use by the Department of Natural Resources, its Offices or Commissions, as herein above reserved.

Applicant: Mohat Properties, L.L.C.

Bidder	Cash Payment	Price/ Acre	Rental	Oil	Gas	Other



TRACT 35972 - Cameron Parish, Louisiana

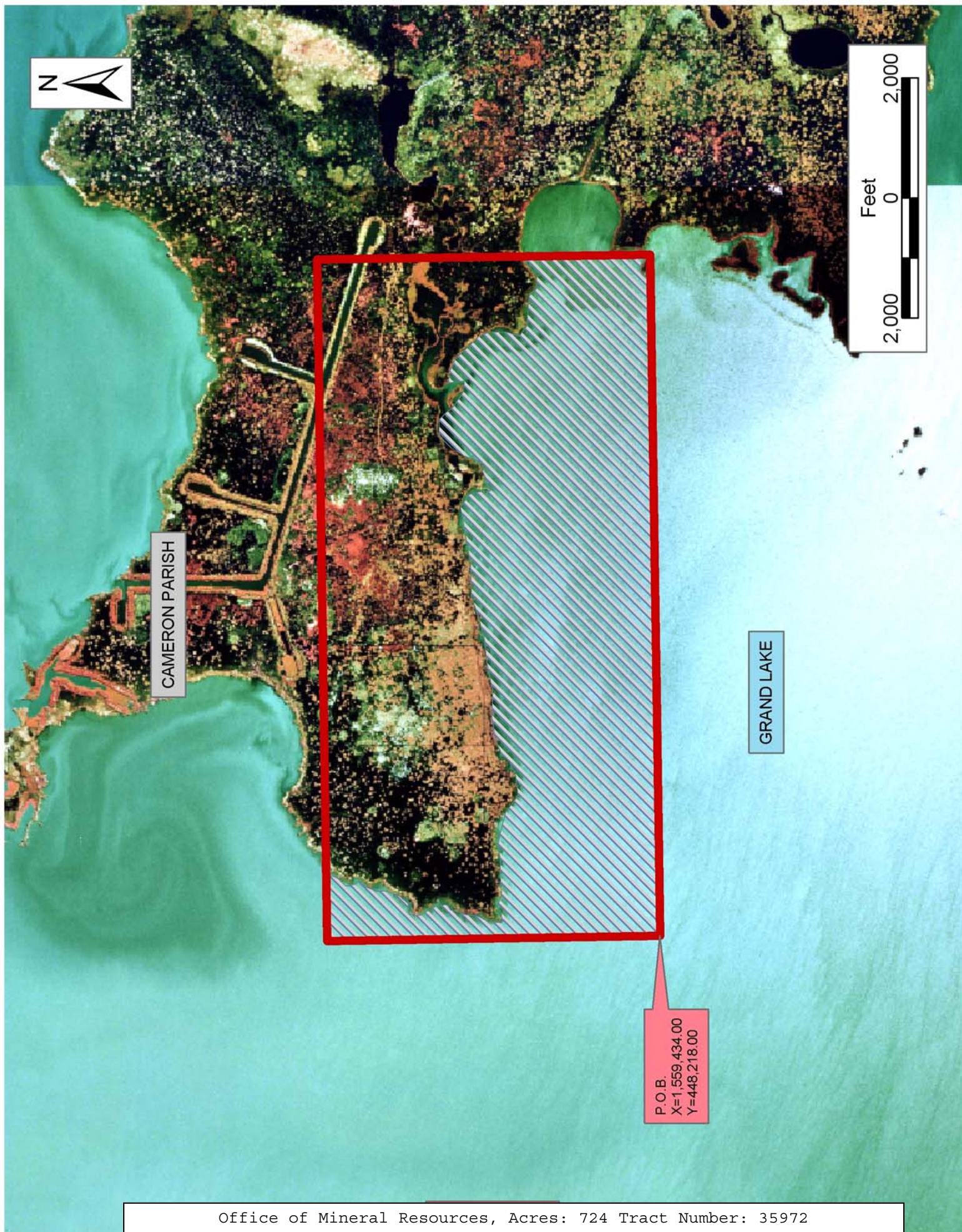
All of the lands now or formerly constituting the beds and bottoms of all water bodies of every nature and description the title of which vests in the State of Louisiana, together with all islands arising therein and other lands formed by accretion or by reliction, where allowed by law, excepting tax adjudicated lands, and not presently under mineral lease on January 14, 2004, situated in Cameron Parish, Louisiana, and more particularly described as follows: Beginning at a point having Coordinates of X = 1,559,434.00 and Y = 448,218.00; thence North 5,547.50 feet to a point having Coordinates of X = 1,559,434.00 and Y = 453,765.50; thence East 11,360.00 feet to a point having Coordinates of X = 1,570,794.00 and Y = 453,765.50; thence South 5,547.50 feet to a point having Coordinates of X = 1,570,794.00 and Y = 448,218.00; thence West 11,360.00 feet to the point of beginning, containing approximately **724 acres**, all as more particularly outlined on a plat on file in the Office of Mineral Resources, Department of Natural Resources. All bearings, distances and coordinates are based on Louisiana Coordinate System of 1927, (North or South Zone), where applicable.

NOTE: The above description of the Tract nominated for lease has been provided and corrected, where required, exclusively by the nomination party. Any mineral lease selected from this Tract and awarded by the Louisiana State Mineral Board shall be without warranty of any kind, either express, implied, or statutory, including, but not limited to, the implied warranties of merchantability and fitness for a particular purpose. Should the mineral lease awarded by the Louisiana State Mineral Board be subsequently modified, cancelled or abrogated due to the existence of conflicting leases, operating agreements, private claims or other future obligations or conditions which may affect all or any portion of the leased Tract, it shall not relieve the Lessee of the obligation to pay any bonus due thereon to the Louisiana State Mineral Board, nor shall the Louisiana State Mineral Board be obligated to refund any consideration paid by the Lessor prior to such modification, cancellation, or abrogation, including, but not limited to, bonuses, rentals and royalties.

NOTE: The State of Louisiana does hereby reserve, and this lease shall be subject to, the imprescriptible right of surface use in the nature of a servitude in favor of the Department of Natural Resources, including its Offices and Commissions, for the sole purpose of implementing, constructing, servicing and maintaining approved coastal zone management and/or restoration projects. Utilization of any and all rights derived under this lease by the mineral lessee, its agents, successors or assigns, shall not interfere with nor hinder the reasonable surface use by the Department of Natural Resources, its Offices or Commissions, as herein above reserved.

Applicant: Mohat Properties, L.L.C.

Bidder	Cash Payment	Price/ Acre	Rental	Oil	Gas	Other



TRACT 35973 - Cameron Parish, Louisiana

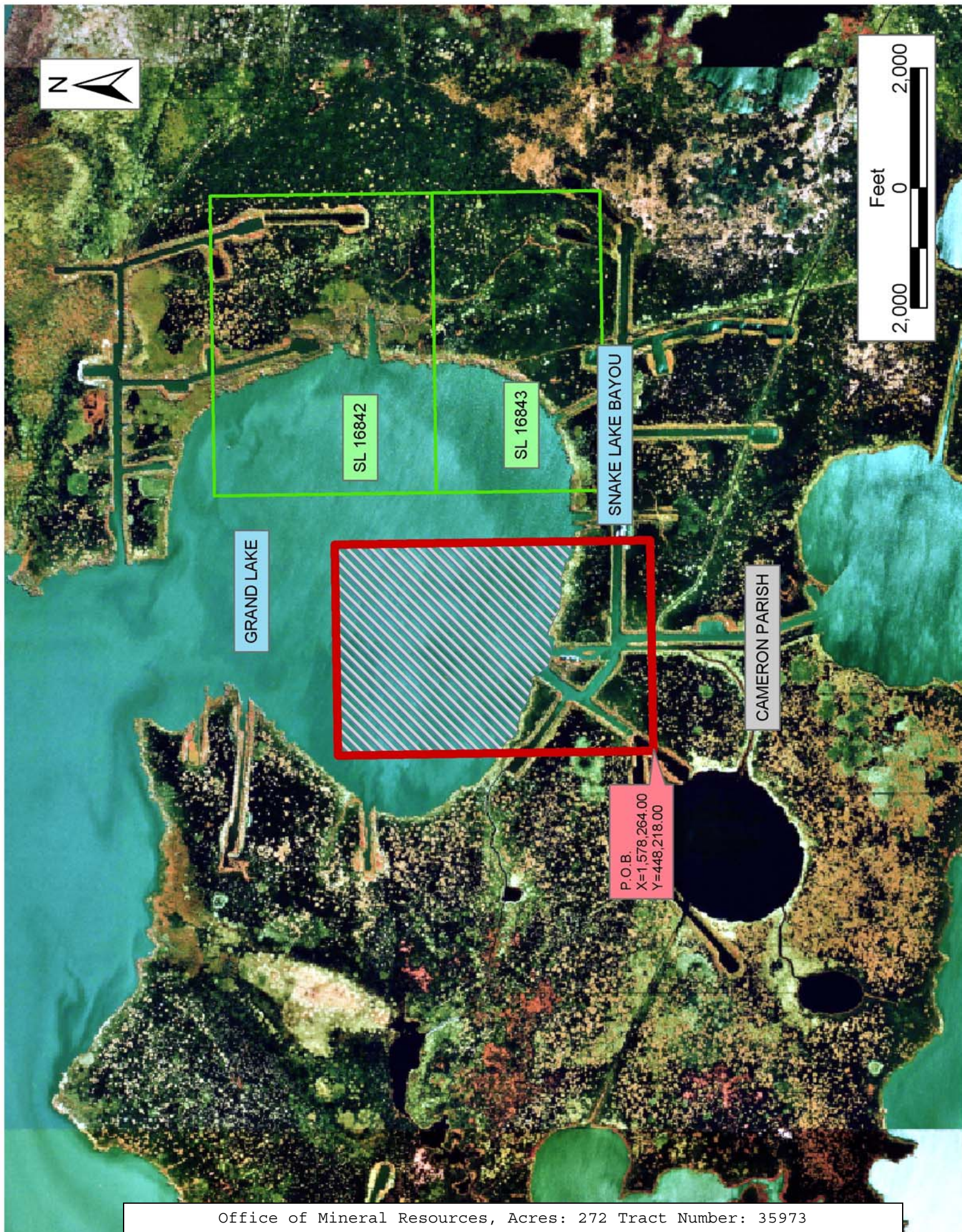
All of the lands now or formerly constituting the beds and bottoms of all water bodies of every nature and description the title of which vests in the State of Louisiana, together with all islands arising therein and other lands formed by accretion or by reliction, where allowed by law, excepting tax adjudicated lands, and not presently under mineral lease on January 14, 2004, situated in Cameron Parish, Louisiana, and more particularly described as follows: Beginning at a point having Coordinates of X = 1,578,264.00 and Y = 448,218.00; thence North 5,260.00 feet to a point having Coordinates of X = 1,578,264.00 and Y = 453,478.00; thence East 3,519.00 feet to a point having Coordinates of X = 1,581,783.00 and Y = 453,478.00; thence South 5,260.00 feet to a point having Coordinates of X = 1,581,783.00 and Y = 448,218.00; thence West 3,519.00 feet to the point of beginning, containing approximately **272 acres**, all as more particularly outlined on a plat on file in the Office of Mineral Resources, Department of Natural Resources. All bearings, distances and coordinates are based on Louisiana Coordinate System of 1927, (North or South Zone), where applicable.

NOTE: The above description of the Tract nominated for lease has been provided and corrected, where required, exclusively by the nomination party. Any mineral lease selected from this Tract and awarded by the Louisiana State Mineral Board shall be without warranty of any kind, either express, implied, or statutory, including, but not limited to, the implied warranties of merchantability and fitness for a particular purpose. Should the mineral lease awarded by the Louisiana State Mineral Board be subsequently modified, cancelled or abrogated due to the existence of conflicting leases, operating agreements, private claims or other future obligations or conditions which may affect all or any portion of the leased Tract, it shall not relieve the Lessee of the obligation to pay any bonus due thereon to the Louisiana State Mineral Board, nor shall the Louisiana State Mineral Board be obligated to refund any consideration paid by the Lessor prior to such modification, cancellation, or abrogation, including, but not limited to, bonuses, rentals and royalties.

NOTE: The State of Louisiana does hereby reserve, and this lease shall be subject to, the imprescriptible right of surface use in the nature of a servitude in favor of the Department of Natural Resources, including its Offices and Commissions, for the sole purpose of implementing, constructing, servicing and maintaining approved coastal zone management and/or restoration projects. Utilization of any and all rights derived under this lease by the mineral lessee, its agents, successors or assigns, shall not interfere with nor hinder the reasonable surface use by the Department of Natural Resources, its Offices or Commissions, as herein above reserved.

Applicant: Mohat Properties, L.L.C.

Bidder	Cash Payment	Price/ Acre	Rental	Oil	Gas	Other



TRACT 35974 - Portion of Block 61, Chandeleur Sound Area, St. Bernard Parish, Louisiana

All of the lands now or formerly constituting the beds and bottoms of all water bodies of every nature and description the title of which vests in the State of Louisiana, together with all islands arising therein and other lands formed by accretion or by reliction, where allowed by law, excepting tax adjudicated lands, and not presently under mineral lease on January 14, 2004, situated in St. Bernard Parish, Louisiana, and more particularly described as follows: Beginning at the Northeast corner of Block 61, Chandeleur Sound Area, having Coordinates of X = 2,768,100.00 and Y = 396,080.00; thence South 7,375.00 feet along the East line of said Block 61 to a point having Coordinates of X = 2,768,100.00 and Y = 388,705.00; thence West 5,400.00 feet to a point having Coordinates of X = 2,762,700.00 and Y = 388,705.00; thence North 7,375.00 feet to a point on the North line of said Block 61 having Coordinates of X = 2,762,700.00 and Y = 396,080.00; thence East 5,400.00 feet along the North line of said Block 61 to the point of beginning, containing **914.26 acres**, all as more particularly outlined on a plat on file in the Office of Mineral Resources, Department of Natural Resources. All bearings, distances and coordinates are based on Louisiana Coordinate System of 1927, (North or South Zone), where applicable.

NOTE: The above description of the Tract nominated for lease has been provided and corrected, where required, exclusively by the nomination party. Any mineral lease selected from this Tract and awarded by the Louisiana State Mineral Board shall be without warranty of any kind, either express, implied, or statutory, including, but not limited to, the implied warranties of merchantability and fitness for a particular purpose. Should the mineral lease awarded by the Louisiana State Mineral Board be subsequently modified, cancelled or abrogated due to the existence of conflicting leases, operating agreements, private claims or other future obligations or conditions which may affect all or any portion of the leased Tract, it shall not relieve the Lessee of the obligation to pay any bonus due thereon to the Louisiana State Mineral Board, nor shall the Louisiana State Mineral Board be obligated to refund any consideration paid by the Lessor prior to such modification, cancellation, or abrogation, including, but not limited to, bonuses, rentals and royalties.

NOTE: The Office of Mineral Resources will require a minimum bonus of \$190 per acre and a minimum royalty of 22%.

NOTE: The State of Louisiana does hereby reserve, and this lease shall be subject to, the imprescriptible right of surface use in the nature of a servitude in favor of the Department of Natural Resources, including its Offices and Commissions, for the sole purpose of implementing, constructing, servicing and maintaining approved coastal zone management and/or restoration projects. Utilization of any and all rights derived under this lease by the mineral lessee, its agents, successors or assigns, shall not interfere with nor hinder the reasonable surface use by the

Department of Natural Resources, its Offices or Commissions, as herein above reserved.

Applicant: Encaladia Petroleum, LLC

Bidder	Cash Payment	Price/ Acre	Rental	Oil	Gas	Other



BLOCK CS0059

P.O.B.
X=2,768,100.00
Y=396,080.00

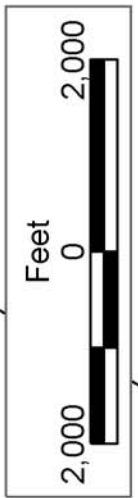
BLOCK CS0060

BLOCK CS0058

ST BERNARD PARISH

BLOCK CS0061

CHANDELEUR SOUND AREA



TRACT 35975 - Portion of Block 60, Chandeleur Sound Area, St. Bernard Parish, Louisiana

All of the lands now or formerly constituting the beds and bottoms of all water bodies of every nature and description the title of which vests in the State of Louisiana, together with all islands arising therein and other lands formed by accretion or by reliction, where allowed by law, excepting tax adjudicated lands, and not presently under mineral lease on January 14, 2004, situated in St. Bernard Parish, Louisiana, and more particularly described as follows: Beginning at the Northwest corner of Block 60, Chandeleur Sound Area, having Coordinates of X = 2,768,100.00 and Y = 396,080.00; thence East 10,936.49 feet along the North line of said Block 60 to a point on the Coastline derived from the June 16, 1975 Decree in the United States vs. Louisiana No. 9 Original, having Coordinates of X = 2,779,036.49 and Y = 396,080.00; thence along said Coastline the following courses: South 30 degrees 59 minutes 02 seconds West 2,164.91 feet to a point having Coordinates of X = 2,777,922.00 and Y = 394,224.00; South 38 degrees 14 minutes 21 seconds West 2,318.46 feet to a point having Coordinates of X = 2,776,487.00 and Y = 392,403.00; South 61 degrees 04 minutes 54 seconds West 1,306.97 feet to a point having Coordinates of X = 2,775,343.00 and Y = 391,771.00; South 26 degrees 24 minutes 46 seconds West 1,177.97 feet to a point having Coordinates of X = 2,774,819.00 and Y = 390,716.00; South 19 degrees 24 minutes 17 seconds West 448.48 feet to a point having Coordinates of X = 2,774,670.00 and Y = 390,293.00; South 50 degrees 48 minutes 49 seconds West 900.54 feet to a point having Coordinates of X = 2,773,972.00 and Y = 389,724.00 and South 31 degrees 31 minutes 26 seconds West 1,195.42 feet to a point having Coordinates of X = 2,773,346.97 and Y = 388,705.00; thence West 5,246.97 feet to a point on the West line of said Block 60 having Coordinates of X = 2,768,100.00 and Y = 388,705.00; thence North 7,375.00 feet along the West line of said Block 60 to the point of beginning, containing approximately **1,381.15 acres**, all as more particularly outlined on a plat on file in the Office of Mineral Resources, Department of Natural Resources. All bearings, distances and coordinates are based on Louisiana Coordinate System of 1927, (North or South Zone), where applicable.

NOTE: The above description of the Tract nominated for lease has been provided and corrected, where required, exclusively by the nomination party. Any mineral lease selected from this Tract and awarded by the Louisiana State Mineral Board shall be without warranty of any kind, either express, implied, or statutory, including, but not limited to, the implied warranties of merchantability and fitness for a particular purpose. Should the mineral lease awarded by the Louisiana State Mineral Board be subsequently modified, cancelled or abrogated due to the existence of conflicting leases, operating agreements, private claims or other future obligations or conditions which may affect all or any portion of the leased Tract, it shall not relieve the Lessee of the obligation to pay any bonus due thereon to the Louisiana State Mineral Board, nor shall the Louisiana State Mineral Board be obligated to refund any consideration

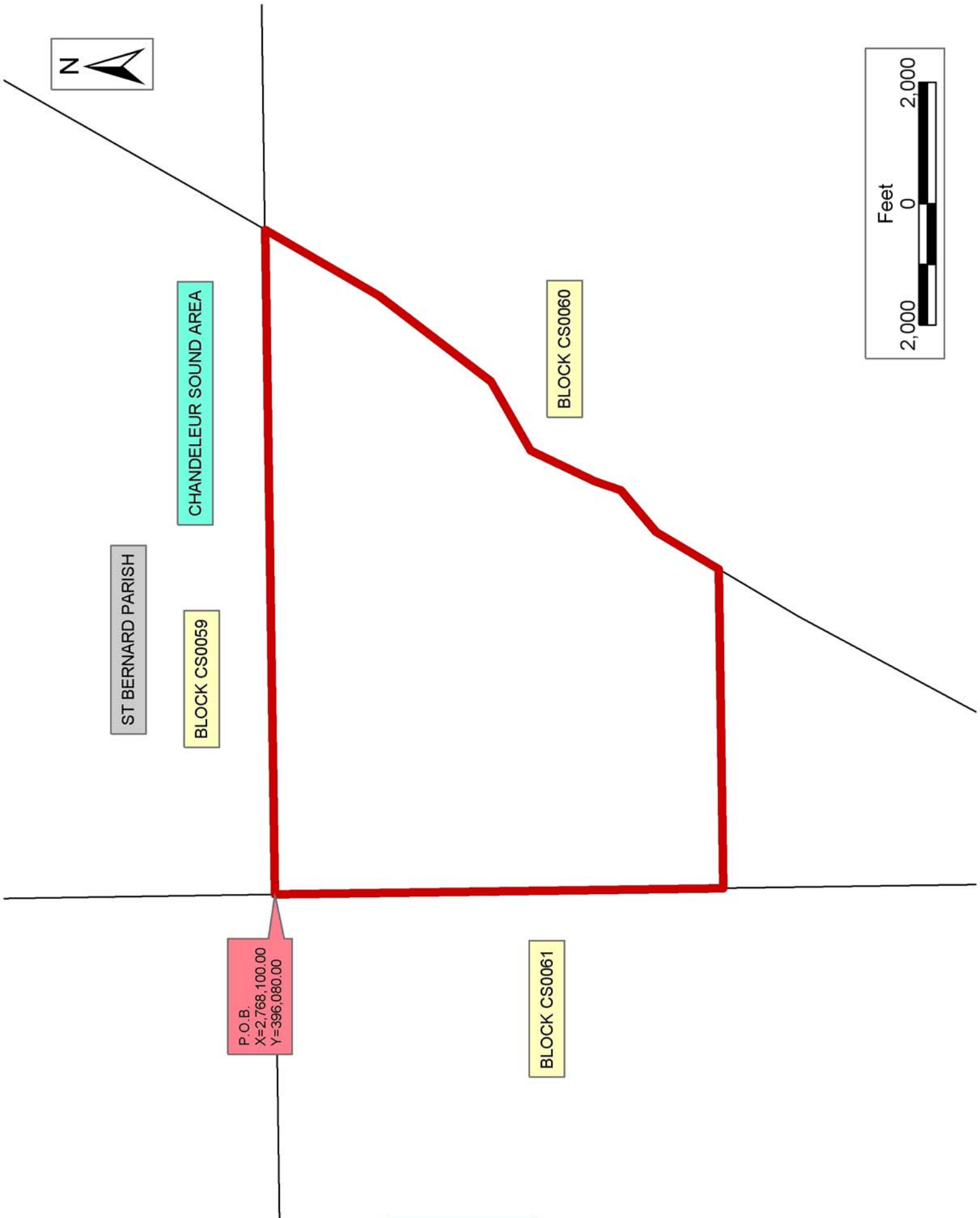
paid by the Lessor prior to such modification, cancellation, or abrogation, including, but not limited to, bonuses, rentals and royalties.

NOTE: The Office of Mineral Resources will require a minimum bonus of \$190 per acre and a minimum royalty of 22%.

NOTE: The State of Louisiana does hereby reserve, and this lease shall be subject to, the imprescriptible right of surface use in the nature of a servitude in favor of the Department of Natural Resources, including its Offices and Commissions, for the sole purpose of implementing, constructing, servicing and maintaining approved coastal zone management and/or restoration projects. Utilization of any and all rights derived under this lease by the mineral lessee, its agents, successors or assigns, shall not interfere with nor hinder the reasonable surface use by the Department of Natural Resources, its Offices or Commissions, as herein above reserved.

Applicant: Bt Exploration, Lp

Bidder	Cash Payment	Price/ Acre	Rental	Oil	Gas	Other



TRACT 35976 - Portion of Blocks 60, and 61, Chandeleur Sound Area, Blocks 5, and 6, Main Pass Area, Revised, St. Bernard Parish, Louisiana

All of the lands now or formerly constituting the beds and bottoms of all water bodies of every nature and description the title of which vests in the State of Louisiana, together with all islands arising therein and other lands formed by accretion or by reliction, where allowed by law, excepting tax adjudicated lands, and not presently under mineral lease on January 14, 2004, situated in St. Bernard Parish, Louisiana, and more particularly described as follows: Beginning at a point within Block 5, Main Pass Area, Revised, said point also being on the Coastline derived from the June 16, 1975 Decree in the United States vs. Louisiana No. 9 Original, having Coordinates of X = 2,762,700.00 and Y = 373,575.54; thence North 7,754.46 feet to a point on the North line of said Block 5, said point also being on the South line of Block 61, Chandeleur Sound Area, having Coordinates of X = 2,762,700.00 and Y = 381,330.00; thence North 7,375.00 feet to a point having Coordinates of X = 2,762,700.00 and Y = 388,705.00; thence East 5,400.00 feet to a point on the East line of said Block 61, said point also being a point on the West line of Block 60, Chandeleur Sound Area, having Coordinates of X = 2,768,100.00 and Y = 388,705.00; thence East 5,246.97 feet to a point on said Coastline having Coordinates of X = 2,773,346.97 and Y = 388,705.00; thence along said Coastline the following courses: South 31 degrees 31 minutes 26 seconds West 1,541.49 feet to a point having Coordinates of X = 2,772,541.00 and Y = 387,391.00; South 28 degrees 59 minutes 47 seconds West 4,006.17 feet to a point having Coordinates of X = 2,770,599.00 and Y = 383,887.00; South 37 degrees 37 minutes 46 second West 2,987.46 feet to a point having Coordinates of X = 2,768,775.00 and Y = 381,521.00; South 30 degrees 13 minutes 33 seconds West 221.05 feet to a point on the South line of said Block 60, said point also being on the North line of Block 6, Main Pass Area, Revised, having Coordinates of X = 2,768,663.72 and Y = 381,330.00; South 30 degrees 13 minutes 33 seconds West 1,119.81 feet to a point on the West line of said Block 6, said point also being on the East line of said Block 5, having Coordinates of X = 2,768,100.00 and Y = 380,362.43; South 30 degrees 13 minutes 33 seconds West 137.07 feet to a point having Coordinates of X = 2,768,031.00 and Y = 380,244.00; South 59 degrees 52 minutes 42 seconds West 1,131.84 feet to a point having Coordinates of X = 2,767,052.00 and Y = 379,676.00; South 29 degrees 12 minutes 23 seconds West 1,319.79 feet to a point having Coordinates of X = 2,766,408.00 and Y = 378,524.00 and South 36 degrees 50 minutes 42 seconds West 6,183.57 feet to the point of beginning, containing approximately **1,949.54 acres**, all as more particularly outlined on a plat on file in the Office of Mineral Resources, Department of Natural Resources. All bearings, distances and coordinates are based on Louisiana Coordinate System of 1927, (North or South Zone), where applicable.

NOTE: The above description of the Tract nominated for lease has been provided and corrected, where required, exclusively by the nomination party. Any mineral lease selected from this Tract and awarded by the Louisiana State Mineral Board shall be without warranty of any kind,

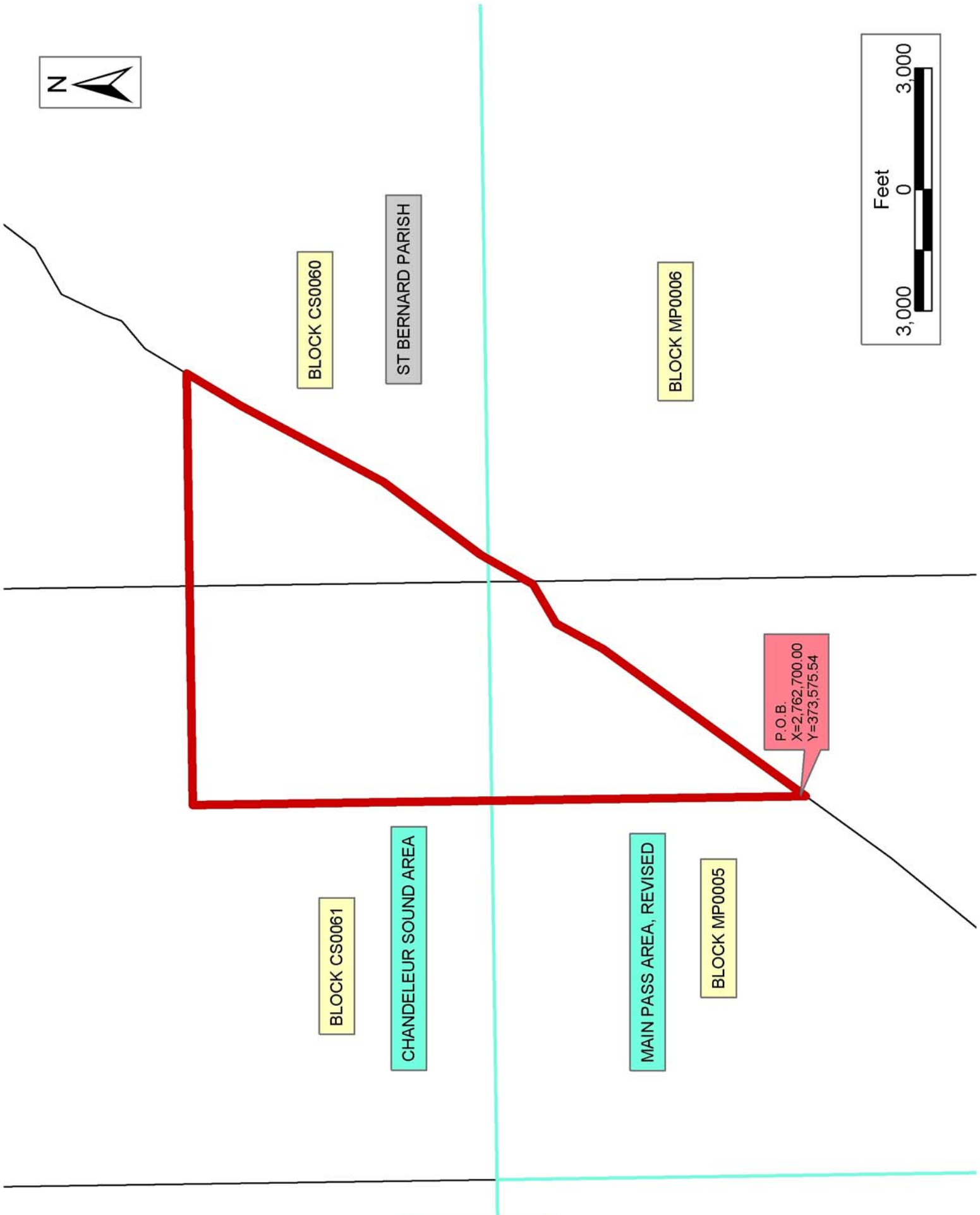
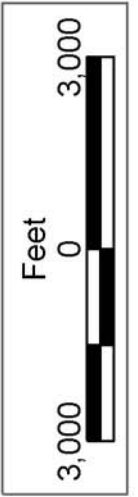
either express, implied, or statutory, including, but not limited to, the implied warranties of merchantability and fitness for a particular purpose. Should the mineral lease awarded by the Louisiana State Mineral Board be subsequently modified, cancelled or abrogated due to the existence of conflicting leases, operating agreements, private claims or other future obligations or conditions which may affect all or any portion of the leased Tract, it shall not relieve the Lessee of the obligation to pay any bonus due thereon to the Louisiana State Mineral Board, nor shall the Louisiana State Mineral Board be obligated to refund any consideration paid by the Lessor prior to such modification, cancellation, or abrogation, including, but not limited to, bonuses, rentals and royalties.

NOTE: The Office of Mineral Resources will require a minimum bonus of \$190 per acre and a minimum royalty of 22%.

NOTE: The State of Louisiana does hereby reserve, and this lease shall be subject to, the imprescriptible right of surface use in the nature of a servitude in favor of the Department of Natural Resources, including its Offices and Commissions, for the sole purpose of implementing, constructing, servicing and maintaining approved coastal zone management and/or restoration projects. Utilization of any and all rights derived under this lease by the mineral lessee, its agents, successors or assigns, shall not interfere with nor hinder the reasonable surface use by the Department of Natural Resources, its Offices or Commissions, as herein above reserved.

Applicant: Bt Exploration, Lp

Bidder	Cash Payment	Price/ Acre	Rental	Oil	Gas	Other



TRACT 35977 - Portion of Block 5, Main Pass Area, Revised, St. Bernard Parish, Louisiana

All of the lands now or formerly constituting the beds and bottoms of all water bodies of every nature and description the title of which vests in the State of Louisiana, together with all islands arising therein and other lands formed by accretion or by reliction, where allowed by law, excepting tax adjudicated lands, and not presently under mineral lease on January 14, 2004, situated in St. Bernard Parish, Louisiana, and more particularly described as follows: Beginning at a point on the South line of Block 5, Main Pass Area, Revised, said point also being on the Coastline derived from the June 16, 1975 Decree in the United States vs. Louisiana No. 9 Original, having Coordinates of X = 2,757,292.59 and Y = 366,580.00; thence North 14,750.00 feet to a point on the North line of said Block 5 having Coordinates of X = 2,757,292.59 and Y = 381,330.00; thence East 5,407.41 feet along the North line of said Block 5 to a point having Coordinates of X = 2,762,700.00 and Y = 381,330.00; thence South 7,754.46 feet to a point on said Coastline having Coordinates of X = 2,762,700.00 and Y = 373,575.54; thence along said Coastline the following courses: South 36 degrees 50 minutes 42 seconds West 2,604.84 feet to a point having Coordinates of X = 2,761,138.00 and Y = 371,491.00; South 39 degrees 59 minutes 57 seconds West 4,737.26 feet to a point having Coordinates of X = 2,758,093.00 and Y = 367,862.00; South 30 degrees 30 minutes 11 seconds West 1,237.21 feet to a point having Coordinates of X = 2,757,465.00 and Y = 366,796.00 and South 38 degrees 35 minutes 46 seconds West 276.37 feet to the point of beginning, containing **1,389.86 acres**, all as more particularly outlined on a plat on file in the Office of Mineral Resources, Department of Natural Resources. All bearings, distances and coordinates are based on Louisiana Coordinate System of 1927, (North or South Zone), where applicable.

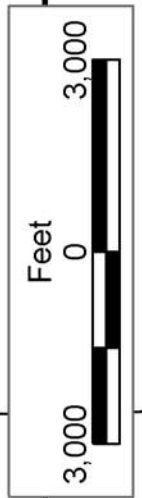
NOTE: The above description of the Tract nominated for lease has been provided and corrected, where required, exclusively by the nomination party. Any mineral lease selected from this Tract and awarded by the Louisiana State Mineral Board shall be without warranty of any kind, either express, implied, or statutory, including, but not limited to, the implied warranties of merchantability and fitness for a particular purpose. Should the mineral lease awarded by the Louisiana State Mineral Board be subsequently modified, cancelled or abrogated due to the existence of conflicting leases, operating agreements, private claims or other future obligations or conditions which may affect all or any portion of the leased Tract, it shall not relieve the Lessee of the obligation to pay any bonus due thereon to the Louisiana State Mineral Board, nor shall the Louisiana State Mineral Board be obligated to refund any consideration paid by the Lessor prior to such modification, cancellation, or abrogation, including, but not limited to, bonuses, rentals and royalties.

NOTE: The Office of Mineral Resources will require a minimum bonus of \$190 per acre and a minimum royalty of 22%.

NOTE: The State of Louisiana does hereby reserve, and this lease shall be subject to, the imprescriptible right of surface use in the nature of a servitude in favor of the Department of Natural Resources, including its Offices and Commissions, for the sole purpose of implementing, constructing, servicing and maintaining approved coastal zone management and/or restoration projects. Utilization of any and all rights derived under this lease by the mineral lessee, its agents, successors or assigns, shall not interfere with nor hinder the reasonable surface use by the Department of Natural Resources, its Offices or Commissions, as herein above reserved.

Applicant: Encaladia Petroleum, LLC

Bidder	Cash Payment	Price/ Acre	Rental	Oil	Gas	Other



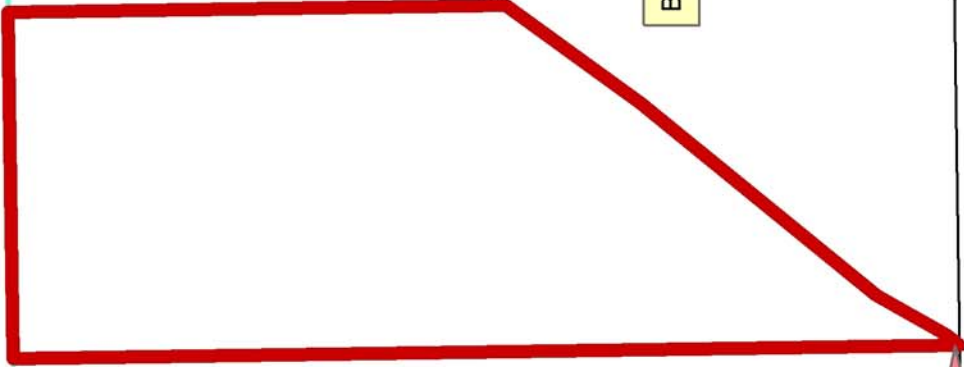
CHANDELEUR SOUND AREA

ST BERNARD PARISH

MAIN PASS
AREA, REVISED

BLOCK MP0006

BLOCK MP0005



P.O.B.
X=2,757,292.59
Y=366,580.00

BRETON
SOUND
AREA

BLOCK BS0008

TRACT 35978 - Portion of Block 2, Breton Sound Area, St. Bernard Parish, Louisiana

All of the lands now or formerly constituting the beds and bottoms of all water bodies of every nature and description the title of which vests in the State of Louisiana, together with all islands arising therein and other lands formed by accretion or by reliction, where allowed by law, excepting tax adjudicated lands, and not presently under mineral lease on January 14, 2004, situated in St. Bernard Parish, Louisiana, and more particularly described as follows: Beginning at the Northwest corner of Block 2, Breton Sound Area, having Coordinates of X = 2,650,100.00 and Y = 381,330.00; Thence East 7,375.00 feet along the North boundary of said Block 2 to a point having Coordinates of X = 2,657,475.00 and Y = 381,330.00; Thence South 8,450.00 feet to a point having Coordinates of X = 2,657,475.00 and Y = 372,880.00; Thence West 7,375.00 feet to a point on the West boundary of said Block 2 having Coordinates of X = 2,650,100.00 and Y = 372,880.00; Thence North 751.48 feet along the said West boundary of said Block 2 to the Southwest corner of State Lease No. 8669, as amended, having Coordinates of X = 2,650,100.00 and Y = 373,631.48; Thence along the Southern, Eastern and Northern boundaries of said State Lease No. 8669, the following courses: South 78 degrees 57 minutes 44 seconds East 3,807.62 feet to its Southeast corner having Coordinates of X = 2,653,837.18 and Y = 372,902.49; North 50 degrees 07 minutes 46 seconds East 301.49 feet to a point having Coordinates of X = 2,654,068.57 and Y = 373,095.76; North 40 degrees 21 minutes 37 seconds East 268.19 feet to a point having Coordinates of X = 2,654,242.25 and Y = 373,300.12; North 35 degrees 59 minutes 46 seconds East 394.40 feet to a point having Coordinates of X = 2,654,474.05 and Y = 373,619.21; North 31 degrees 27 minutes 43 seconds East 391.08 feet to a point having Coordinates of X = 2,654,678.17 and Y = 373,952.79; North 23 degrees 47 minutes 22 seconds East 383.07 feet to a point having Coordinates of X = 2,654,832.69 and Y = 374,303.32; North 17 degrees 46 minutes 21 seconds East 410.63 feet to a point having Coordinates of X = 2,654,958.03 and Y = 374,694.35; North 12 degrees 54 minutes 31 seconds East 361.06 feet to a point having Coordinates of X = 2,655,038.69 and Y = 375,046.28; North 06 degrees 59 minutes 07 seconds East 389.42 feet to its most Easterly Northeast corner having Coordinates of X = 2,655,086.05 and Y = 375,432.81; North 66 degrees 41 minutes 58 seconds West 2,268.18 feet to its most Westerly Northeast corner, also being the most Easterly corner of State Lease No. 11584, as amended, having Coordinates of X = 2,653,002.86 and Y = 376,330.00; Thence along the Northern boundary of said State Lease No. 11584, the following courses: North 66 degrees 41 minutes 58 seconds West 395.25 feet to a point having Coordinates of X = 2,652,639.84 and Y = 376,486.34; North 09 degrees 31 minutes 53 seconds East 109.00 feet to a point having Coordinates of X = 2,652,657.89 and Y = 376,593.84; North 68 degrees 15 minutes 48 seconds West 2,334.22 feet to a point having Coordinates of X = 2,650,489.65 and Y = 377,458.31; North 72 degrees 54 minutes 01 seconds West 297.04 feet to a point having Coordinates of X = 2,650,205.74 and Y = 377,545.65; North 80 degrees 59 minutes 32 seconds West 107.06 feet to its Northwest corner on the West boundary of said

Block 2 having Coordinates of X = 2,650,100.00 and Y = 377,562.41; Thence North 3,767.59 feet along the said West boundary of said Block 2 to the point of beginning, containing approximately **1,069.14 acres**, all as more particularly outlined on a plat on file in the Office of Mineral Resources, Department of Natural Resources. All bearings, distances and coordinates are based on Louisiana Coordinate System of 1927, (North or South Zone), where applicable.

NOTE: The above description of the Tract nominated for lease has been provided and corrected, where required, exclusively by the nomination party. Any mineral lease selected from this Tract and awarded by the Louisiana State Mineral Board shall be without warranty of any kind, either express, implied, or statutory, including, but not limited to, the implied warranties of merchantability and fitness for a particular purpose. Should the mineral lease awarded by the Louisiana State Mineral Board be subsequently modified, cancelled or abrogated due to the existence of conflicting leases, operating agreements, private claims or other future obligations or conditions which may affect all or any portion of the leased Tract, it shall not relieve the Lessee of the obligation to pay any bonus due thereon to the Louisiana State Mineral Board, nor shall the Louisiana State Mineral Board be obligated to refund any consideration paid by the Lessor prior to such modification, cancellation, or abrogation, including, but not limited to, bonuses, rentals and royalties.

NOTE: The Office of Mineral Resources will require a minimum bonus of \$190 per acre and a minimum royalty of 22%.

NOTE: The State of Louisiana does hereby reserve, and this lease shall be subject to, the imprescriptible right of surface use in the nature of a servitude in favor of the Department of Natural Resources, including its Offices and Commissions, for the sole purpose of implementing, constructing, servicing and maintaining approved coastal zone management and/or restoration projects. Utilization of any and all rights derived under this lease by the mineral lessee, its agents, successors or assigns, shall not interfere with nor hinder the reasonable surface use by the Department of Natural Resources, its Offices or Commissions, as herein above reserved.

Bidder	Cash Payment	Price/ Acre	Rental	Oil	Gas	Other

Applicant: Energy Partners, Inc.

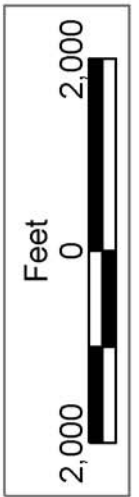


ST BERNARD PARISH

CHANDELEUR SOUND AREA

BLOCK BS0002

BRETON SOUND AREA



P.O.B.
X=2,650,100.00
Y=381,330.00

SL 8522

SL 11999

SL 11584

SL 8669

SL 11700

BLOCK BS0001

TRACT 35979 - Portion of Block 1, Breton Sound Area, St. Bernard Parish, Louisiana

All of the lands now or formerly constituting the beds and bottoms of all water bodies of every nature and description the title of which vests in the State of Louisiana, together with all islands arising therein and other lands formed by accretion or by reliction, where allowed by law, excepting tax adjudicated lands, and not presently under mineral lease on January 14, 2004, situated in St. Bernard Parish, Louisiana, and more particularly described as follows: Beginning at a point on the West boundary of Block 1, Breton Sound Area, having Coordinates of X = 2,635,350.00 and Y = 378,090.27; Thence North 3,239.73 feet along the said West boundary of said Block 1 to its Northwest corner having Coordinates of X = 2,635,350.00 and Y = 381,330.00; Thence East 14,750.00 feet along the North boundary of said Block 1 to its Northeast corner having Coordinates of X = 2,650,100.00 and Y = 381,330.00; Thence South 3,767.59 feet along the East boundary of said Block 1 to the Northeast corner of State Lease No. 11999, as amended, having Coordinates of X = 2,650,100.00 and Y = 377,562.41; Thence along the North boundary of said State Lease No. 11999, the following courses: North 80 degrees 59 minutes 32 seconds West 183.23 feet to a point having Coordinates of X = 2,649,919.03 and Y = 377,591.10; North 89 degrees 14 minutes 22 seconds West 337.46 feet to a point having Coordinates of X = 2,649,581.60 and Y = 377,595.58; and South 82 degrees 01 minutes 11 seconds West 183.38 feet to its Northwest corner, also being a point on the East boundary of State Lease No. 8522, as amended, having Coordinates of X = 2,649,400.00 and Y = 377,570.12; Thence North 2,577.74 feet along the said East boundary of said State Lease No. 8522, to its Northeast corner having Coordinates of X = 2,649,400.00 and Y = 380,147.86; Thence along the North boundary of said State Lease No. 8522, the following courses: North 86 degrees 57 minutes 41 seconds West 3,705.16 feet to a point having Coordinates of X = 2,645,700.05 and Y = 380,344.27; and North 84 degrees 30 minutes 50 seconds West 2,988.74 feet to its Northwest corner having Coordinates of X = 2,642,725.00 and Y = 380,630.00; Thence South 3,415.73 feet along the West boundary of said State Lease No. 8522, to a point having Coordinates of X = 2,642,725.00 and Y = 377,214.27; Thence North 83 degrees 13 minutes 34 seconds West 387.71 feet to the Southeast corner of State Lease No. 17453 having Coordinates of X = 2,642,340.00 and Y = 377,260.00; Thence North 1,740.00 feet along the East boundary of said State Lease No. 17453 to its Northeast corner having Coordinates of X = 2,642,340.00 and Y = 379,000.00; Thence North 79 degrees 59 minutes 12 seconds West 5,436.82 feet along the North boundary of said State lease No. 17453 to its most Northerly Northwest corner having Coordinates of X = 2,636,986.00 and Y = 379,945.33; Thence South 241.33 feet along the most Easterly West boundary of said State Lease No. 17453 to a corner having Coordinates of X = 2,636,986.00 and Y = 379,704.00; Thence West 876.00 feet along the most Southerly North boundary of said State Lease No. 17453 to its most Southerly Northwest corner having Coordinates of X = 2,636,110.00 and Y = 379,704.00; Thence South 1,704.00 feet along the West boundary of said State Lease No. 17453 to its Southwest corner having Coordinates of X =

2,636,110.00 and Y = 378,000.00; Thence North 83 degrees 13 minutes 34 seconds West 765.34 feet to the point of beginning, containing approximately **564.27 acres**, all as more particularly outlined on a plat on file in the Office of Mineral Resources, Department of Natural Resources. All bearings, distances and coordinates are based on Louisiana Coordinate System of 1927, (North or South Zone), where applicable.

NOTE: The above description of the Tract nominated for lease has been provided and corrected, where required, exclusively by the nomination party. Any mineral lease selected from this Tract and awarded by the Louisiana State Mineral Board shall be without warranty of any kind, either express, implied, or statutory, including, but not limited to, the implied warranties of merchantability and fitness for a particular purpose. Should the mineral lease awarded by the Louisiana State Mineral Board be subsequently modified, cancelled or abrogated due to the existence of conflicting leases, operating agreements, private claims or other future obligations or conditions which may affect all or any portion of the leased Tract, it shall not relieve the Lessee of the obligation to pay any bonus due thereon to the Louisiana State Mineral Board, nor shall the Louisiana State Mineral Board be obligated to refund any consideration paid by the Lessor prior to such modification, cancellation, or abrogation, including, but not limited to, bonuses, rentals and royalties.

NOTE: The State of Louisiana does hereby reserve, and this lease shall be subject to, the imprescriptible right of surface use in the nature of a servitude in favor of the Department of Natural Resources, including its Offices and Commissions, for the sole purpose of implementing, constructing, servicing and maintaining approved coastal zone management and/or restoration projects. Utilization of any and all rights derived under this lease by the mineral lessee, its agents, successors or assigns, shall not interfere with nor hinder the reasonable surface use by the Department of Natural Resources, its Offices or Commissions, as herein above reserved.

Applicant: Energy Partners, Inc.

Bidder	Cash Payment	Price/ Acre	Rental	Oil	Gas	Other

