

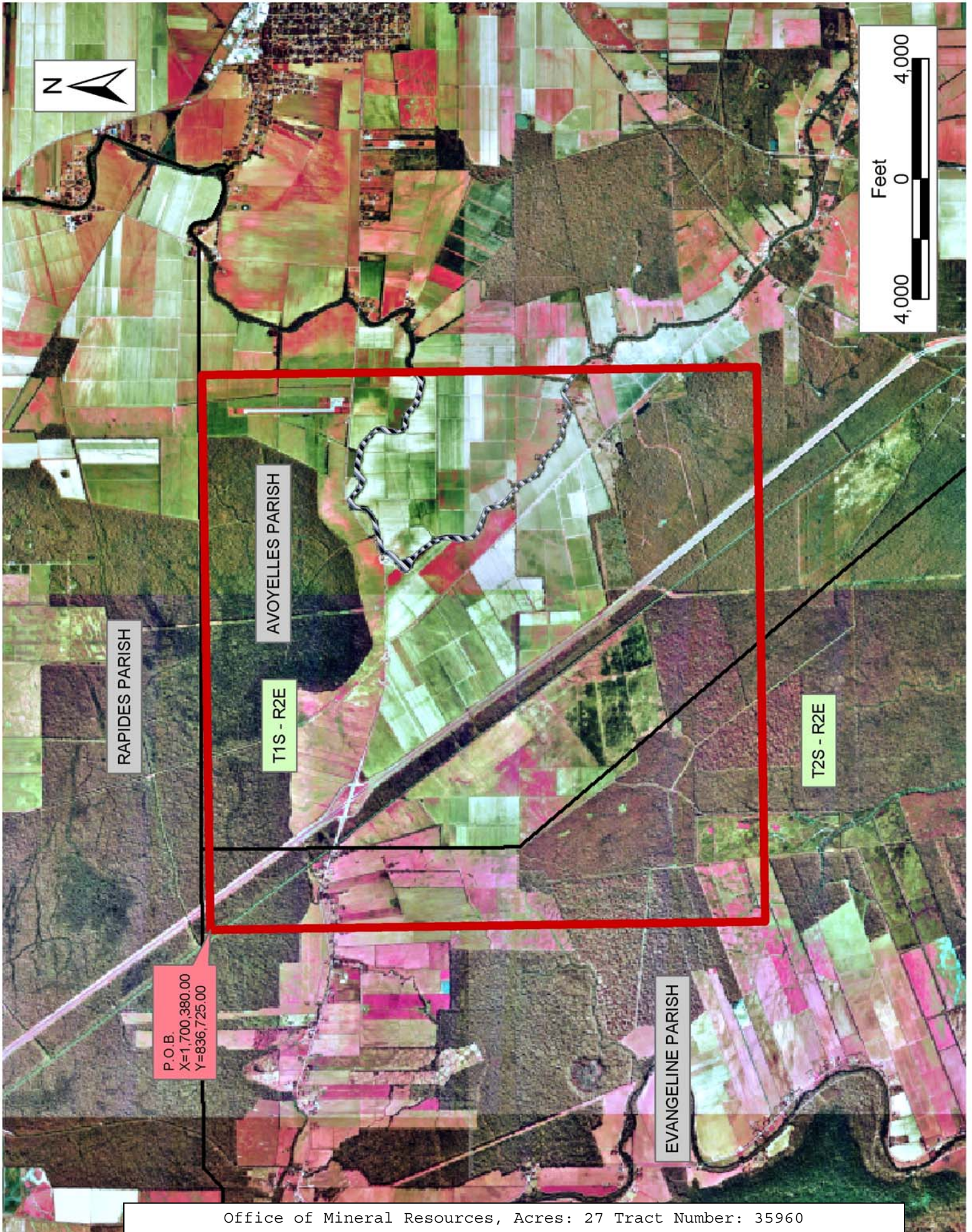
**TRACT 35960 - Avoyelles and Evangeline Parishes, Louisiana**

All of the lands now or formerly constituting the beds and bottoms of all water bodies of every nature and description the title of which vests in the State of Louisiana, together with all islands arising therein and other lands formed by accretion or by reliction, where allowed by law, excepting tax adjudicated lands, and not presently under mineral lease on January 14, 2004, situated in Avoyelles and Evangeline Parishes, Louisiana, and more particularly described as follows: Beginning at a point having Coordinates of X = 1,700,380.00 and Y = 836,725.00; thence East 18,480.00 feet to a point having Coordinates of X = 1,718,860.00 and Y = 836,725.00; thence South 18,480.00 feet to a point having Coordinates of X = 1,718,860.00 and Y = 818,245.00; thence West 18,480.00 feet to a point having Coordinates of X = 1,700,380.00 and Y = 818,245.00; thence North 18,480.00 feet to the point of beginning, **LESS AND EXCEPT** any portion of the Acadiana Conservation Corridor Wildlife Management Area that may lie within the above described tract, containing approximately **27 acres**, all as more particularly outlined on a plat on file in the Office of Mineral Resources, Department of Natural Resources. All bearings, distances and coordinates are based on Louisiana Coordinate System of 1927, (North or South Zone), where applicable.

NOTE: The above description of the Tract nominated for lease has been provided and corrected, where required, exclusively by the nomination party. Any mineral lease selected from this Tract and awarded by the Louisiana State Mineral Board shall be without warranty of any kind, either express, implied, or statutory, including, but not limited to, the implied warranties of merchantability and fitness for a particular purpose. Should the mineral lease awarded by the Louisiana State Mineral Board be subsequently modified, cancelled or abrogated due to the existence of conflicting leases, operating agreements, private claims or other future obligations or conditions which may affect all or any portion of the leased Tract, it shall not relieve the Lessee of the obligation to pay any bonus due thereon to the Louisiana State Mineral Board, nor shall the Louisiana State Mineral Board be obligated to refund any consideration paid by the Lessor prior to such modification, cancellation, or abrogation, including, but not limited to, bonuses, rentals and royalties.

Applicant: Classic Petroleum, Inc.

Bidder	Cash Payment	Price/Acre	Rental	Oil	Gas	Other



**TRACT 35961 - Evangeline Parish, Louisiana**

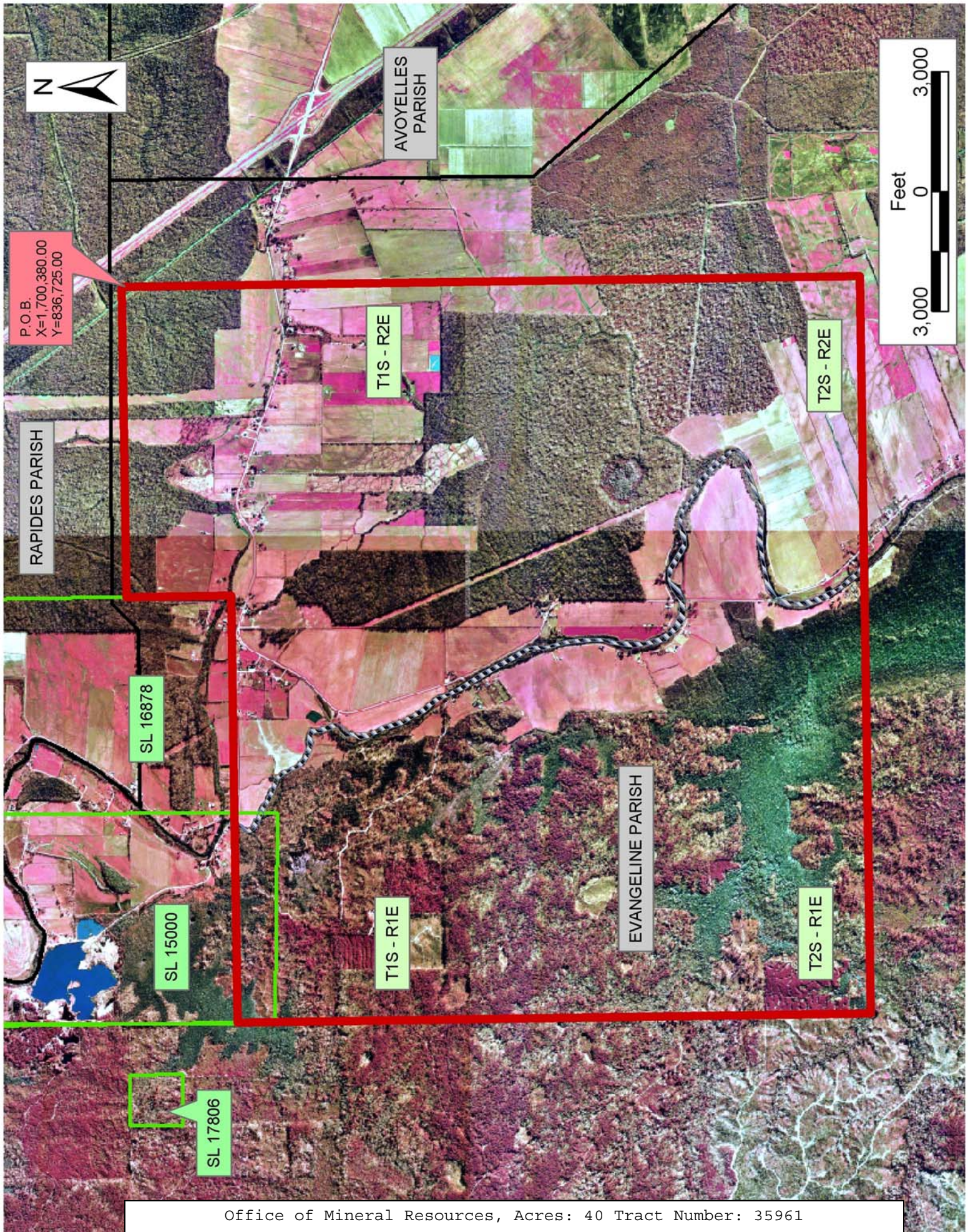
All of the lands now or formerly constituting the beds and bottoms of all water bodies of every nature and description the title of which vests in the State of Louisiana, together with all islands arising therein and other lands formed by accretion or by reliction, where allowed by law, excepting tax adjudicated lands, and not presently under mineral lease on January 14, 2004, situated in Evangeline Parish, Louisiana, and more particularly described as follows: Beginning at a point having Coordinates of X = 1,700,380.00 and Y = 836,725.00; thence South 18,480.00 feet to a point having Coordinates of X = 1,700,380.00 and Y = 818,245.00; thence West 18,480.00 feet to a point having Coordinates of X = 1,681,900.00 and Y = 818,245.00; thence North 15,855.00 feet to the Southwest corner of State Lease No. 16878 having Coordinates of X = 1,681,900.00 and Y = 834,100.00; thence along the boundary of said State Lease No. 16878 the following courses: East 10,700.00 feet and North 2,625.00 feet to a point having Coordinates of X = 1,692,600.00 and Y = 836,725.00; thence East 7,780.00 feet to the point of beginning, **LESS AND EXCEPT** any portion of the Acadiana Conservation Corridor Wildlife Management Area, that may lie within the above described tract, containing approximately **40 acres**, all as more particularly outlined on a plat on file in the Office of Mineral Resources, Department of Natural Resources. All bearings, distances and coordinates are based on Louisiana Coordinate System of 1927, (North or South Zone), where applicable.

NOTE: The above description of the Tract nominated for lease has been provided and corrected, where required, exclusively by the nomination party. Any mineral lease selected from this Tract and awarded by the Louisiana State Mineral Board shall be without warranty of any kind, either express, implied, or statutory, including, but not limited to, the implied warranties of merchantability and fitness for a particular purpose. Should the mineral lease awarded by the Louisiana State Mineral Board be subsequently modified, cancelled or abrogated due to the existence of conflicting leases, operating agreements, private claims or other future obligations or conditions which may affect all or any portion of the leased Tract, it shall not relieve the Lessee of the obligation to pay any bonus due thereon to the Louisiana State Mineral Board, nor shall the Louisiana State Mineral Board be obligated to refund any consideration paid by the Lessor prior to such modification, cancellation, or abrogation, including, but not limited to, bonuses, rentals and royalties.

NOTE: The above Tract is located upon a restricted scenic river and all operations in this area must be conducted in strict conformity with the regulations of the Corps of Engineers, U.S. Army.

Applicant: Classic Petroleum, Inc.

Bidder	Cash Payment	Price/Acre	Rental	Oil	Gas	Other



AVOYELLES  
PARISH



P.O.B.  
X=1,700,380.00  
Y=836,725.00

RAPIDES PARISH

T1S - R2E

T2S - R2E

SL 16878

SL 15000

T1S - R1E

EVANGELINE PARISH

T2S - R1E

SL 17806

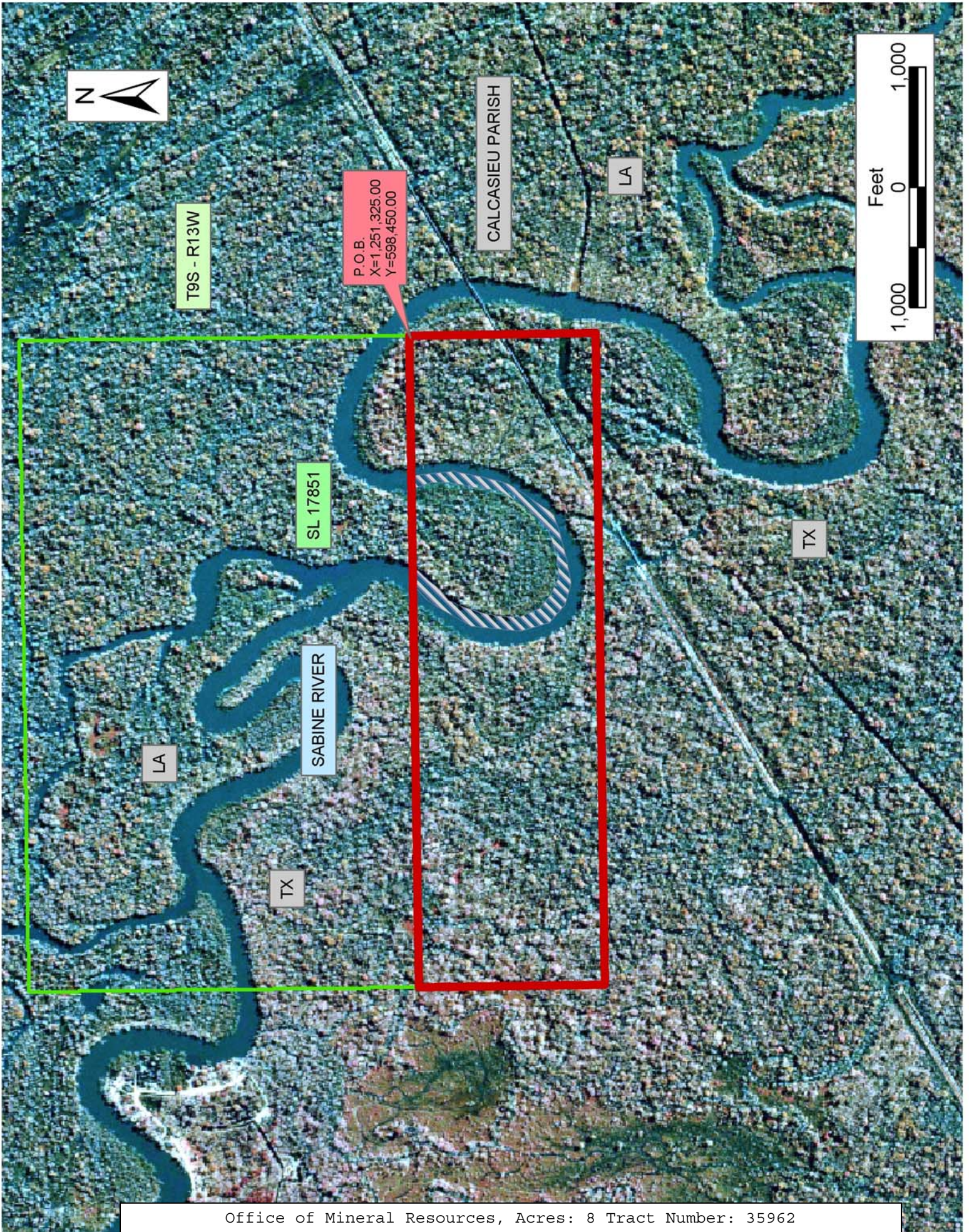
**TRACT 35962 - Calcasieu Parish, Louisiana**

All of the lands now or formerly constituting the beds and bottoms of all water bodies of every nature and description the title of which vests in the State of Louisiana, together with all islands arising therein and other lands formed by accretion or by reliction, where allowed by law, excepting tax adjudicated lands, and not presently under mineral lease on January 14, 2004, situated in Calcasieu Parish, Louisiana, and more particularly described as follows: Beginning at the Southeast corner of State Lease No. 17851 having Coordinates of X = 1,251,325.00 and Y = 598,450.00; Thence South 1,550.00 feet to a point having Coordinates of X = 1,251,325.00 and Y = 596,900.00; Thence West 5,425.00 feet to a point having Coordinates of X = 1,245,900.00 and Y = 596,900.00; Thence North 1,550.00 feet to the Southwest corner of said State Lease No. 17851 having Coordinates of X = 1,245,900.00 and Y = 598,450.00; Thence East 5,425.00 feet along the South boundary of said State Lease No. 17851 to the point of beginning, containing approximately **8 acres, LESS AND EXCEPT** that portion thereof, if any, located West of the boundary line between the States of Texas and Louisiana as determined by the report of the Special Master and adjudicated by the Supreme Court of the United States in litigation styled **Texas v. Louisiana, et al No. 36 Original**, or as otherwise approved by said court, all as more particularly outlined on a plat on file in the Office of Mineral Resources, Department of Natural Resources. All bearings, distances and coordinates are based on Louisiana Coordinate System of 1927, (North or South Zone), where applicable.

NOTE: The above description of the Tract nominated for lease has been provided and corrected, where required, exclusively by the nomination party. Any mineral lease selected from this Tract and awarded by the Louisiana State Mineral Board shall be without warranty of any kind, either express, implied, or statutory, including, but not limited to, the implied warranties of merchantability and fitness for a particular purpose. Should the mineral lease awarded by the Louisiana State Mineral Board be subsequently modified, cancelled or abrogated due to the existence of conflicting leases, operating agreements, private claims or other future obligations or conditions which may affect all or any portion of the leased Tract, it shall not relieve the Lessee of the obligation to pay any bonus due thereon to the Louisiana State Mineral Board, nor shall the Louisiana State Mineral Board be obligated to refund any consideration paid by the Lessor prior to such modification, cancellation, or abrogation, including, but not limited to, bonuses, rentals and royalties.

Applicant: Jerel Exploration, Inc.

Bidder	Cash Payment	Price/Acre	Rental	Oil	Gas	Other





**TRACT 35963 - Ascension and St. James Parishes, Louisiana**

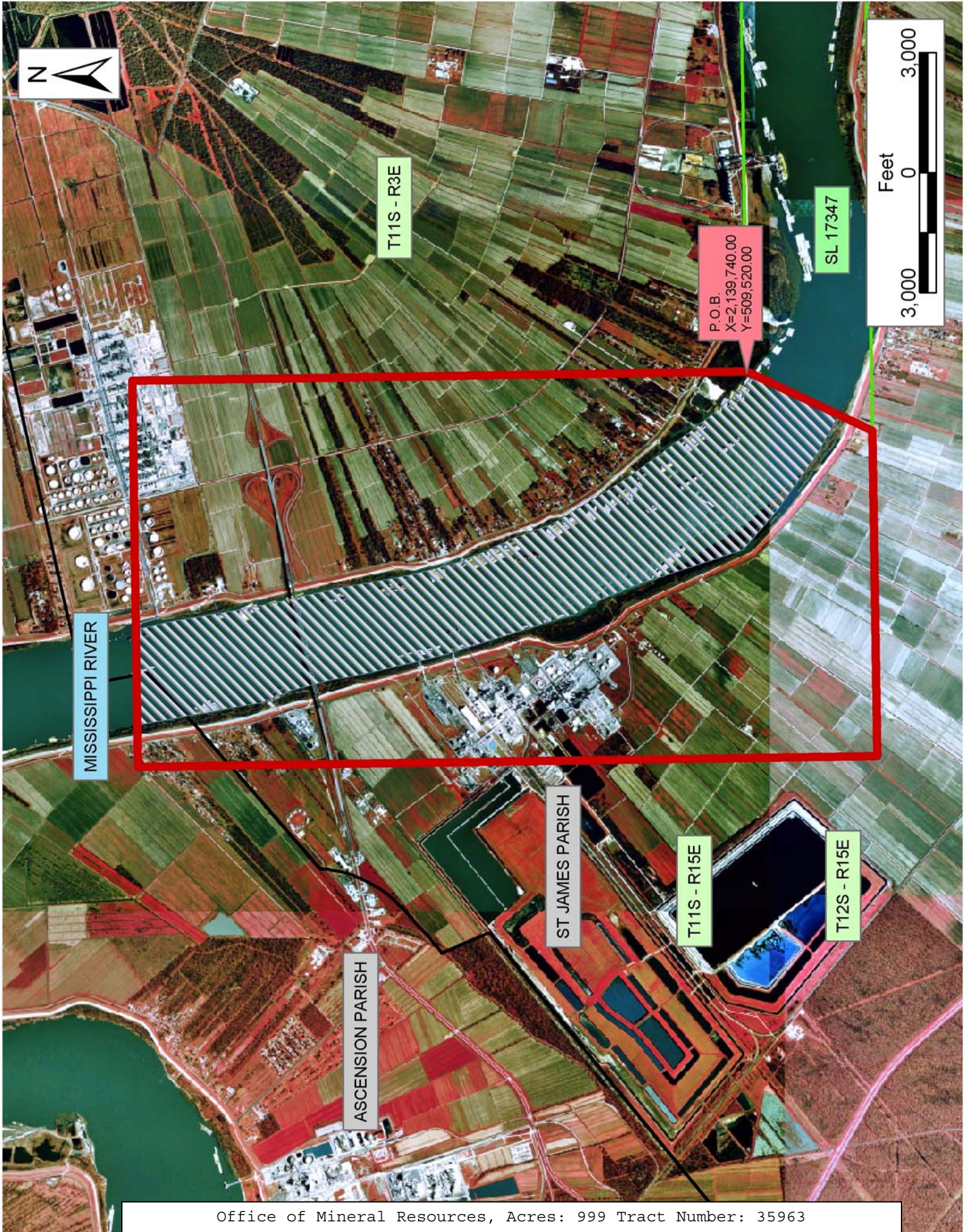
All of the lands now or formerly constituting the beds and bottoms of all water bodies of every nature and description the title of which vests in the State of Louisiana, together with all islands arising therein and other lands formed by accretion or by reliction, where allowed by law, excepting tax adjudicated lands, and not presently under mineral lease on January 14, 2004, situated in Ascension and St. James Parishes, Louisiana, and more particularly described as follows: Beginning at the Northwest corner of State Lease No. 17347 having Coordinates of X = 2,139,740.00 and Y = 509,520.00; thence South 25 degrees 58 minutes 28 seconds West 3,470.56 feet on the West line of said State Lease No. 17347 to its Southwest corner having Coordinates of X = 2,138,220.00 and Y = 506,400.00; thence West 8,135.00 feet to a point having Coordinates of X = 2,130,085.00 and Y = 506,400.00; thence North 18,480.00 feet to a point having Coordinates of X = 2,130,085.00 and Y = 524,880.00; thence East 9,655.00 feet to a point having Coordinates of X = 2,139,740.00 and Y = 524,880.00; thence South 15,360.00 feet to the point of beginning, containing approximately **999 acres**, all as more particularly outlined on a plat on file in the Office of Mineral Resources, Department of Natural Resources. All bearings, distances and coordinates are based on Louisiana Coordinate System of 1927, (North or South Zone), where applicable.

NOTE: The above description of the Tract nominated for lease has been provided and corrected, where required, exclusively by the nomination party. Any mineral lease selected from this Tract and awarded by the Louisiana State Mineral Board shall be without warranty of any kind, either express, implied, or statutory, including, but not limited to, the implied warranties of merchantability and fitness for a particular purpose. Should the mineral lease awarded by the Louisiana State Mineral Board be subsequently modified, cancelled or abrogated due to the existence of conflicting leases, operating agreements, private claims or other future obligations or conditions which may affect all or any portion of the leased Tract, it shall not relieve the Lessee of the obligation to pay any bonus due thereon to the Louisiana State Mineral Board, nor shall the Louisiana State Mineral Board be obligated to refund any consideration paid by the Lessor prior to such modification, cancellation, or abrogation, including, but not limited to, bonuses, rentals and royalties.

NOTE: The State of Louisiana does hereby reserve, and this lease shall be subject to, the imprescriptible right of surface use in the nature of a servitude in favor of the Department of Natural Resources, including its Offices and Commissions, for the sole purpose of implementing, constructing, servicing and maintaining approved coastal zone management and/or restoration projects. Utilization of any and all rights derived under this lease by the mineral lessee, its agents, successors or assigns, shall not interfere with nor hinder the reasonable surface use by the Department of Natural Resources, its Offices or Commissions, as herein above reserved.

Applicant: Dominion Oil Properties, Inc.

Bidder	Cash Payment	Price/Acre	Rental	Oil	Gas	Other



**TRACT 35964 - Cameron Parish, Louisiana**

All of the lands now or formerly constituting the beds and bottoms of all water bodies of every nature and description the title of which vests in the State of Louisiana, together with all islands arising therein and other lands formed by accretion or by reliction, where allowed by law, excepting tax adjudicated lands, and not presently under mineral lease on January 14, 2004, situated in Cameron Parish, Louisiana, and more particularly described as follows: Beginning at a point having Coordinates of X = 1,570,794.00 and Y = 469,363.00; thence South 10,375.64 feet to a point having Coordinates of X = 1,570,794.00 and Y = 458,987.36; thence West 5,867.00 feet to a point on the boundary of State Lease No. 1812, as amended, having Coordinates of X = 1,564,927.00 and Y = 458,987.36; thence along the boundary of said State Lease No. 1812, the following courses: North 00 degrees 42 minutes 06 seconds East 701.51 feet to a point having Coordinates of X = 1,564,935.59 and Y = 459,688.82; North 89 degrees 17 minutes 54 seconds West 2,040.70 feet to a point having Coordinates of X = 1,562,895.04 and Y = 459,713.81; North 00 degrees 42 minutes 06 seconds East 1,187.20 feet to a point having Coordinates of X = 1,562,909.58 and Y = 460,900.92 and North 89 degrees 17 minutes 54 seconds West 471.62 feet to a point on its North boundary, having Coordinates of X = 1,562,438.00 and Y = 460,906.70; thence North 3,375.30 feet to a point having Coordinates of X = 1,562,438.00 and Y = 464,282.00; thence East 3,452.00 feet to a point having Coordinates of X = 1,565,890.00 and Y = 464,282.00; thence North 5,081.00 feet to a point having Coordinates of X = 1,565,890.00 and Y = 469,363.00; thence East 4,904.00 feet to the point of beginning, containing approximately **997 acres**, all as more particularly outlined on a plat on file in the Office of Mineral Resources, Department of Natural Resources. All bearings, distances and coordinates are based on Louisiana Coordinate System of 1927, (North or South Zone), where applicable.

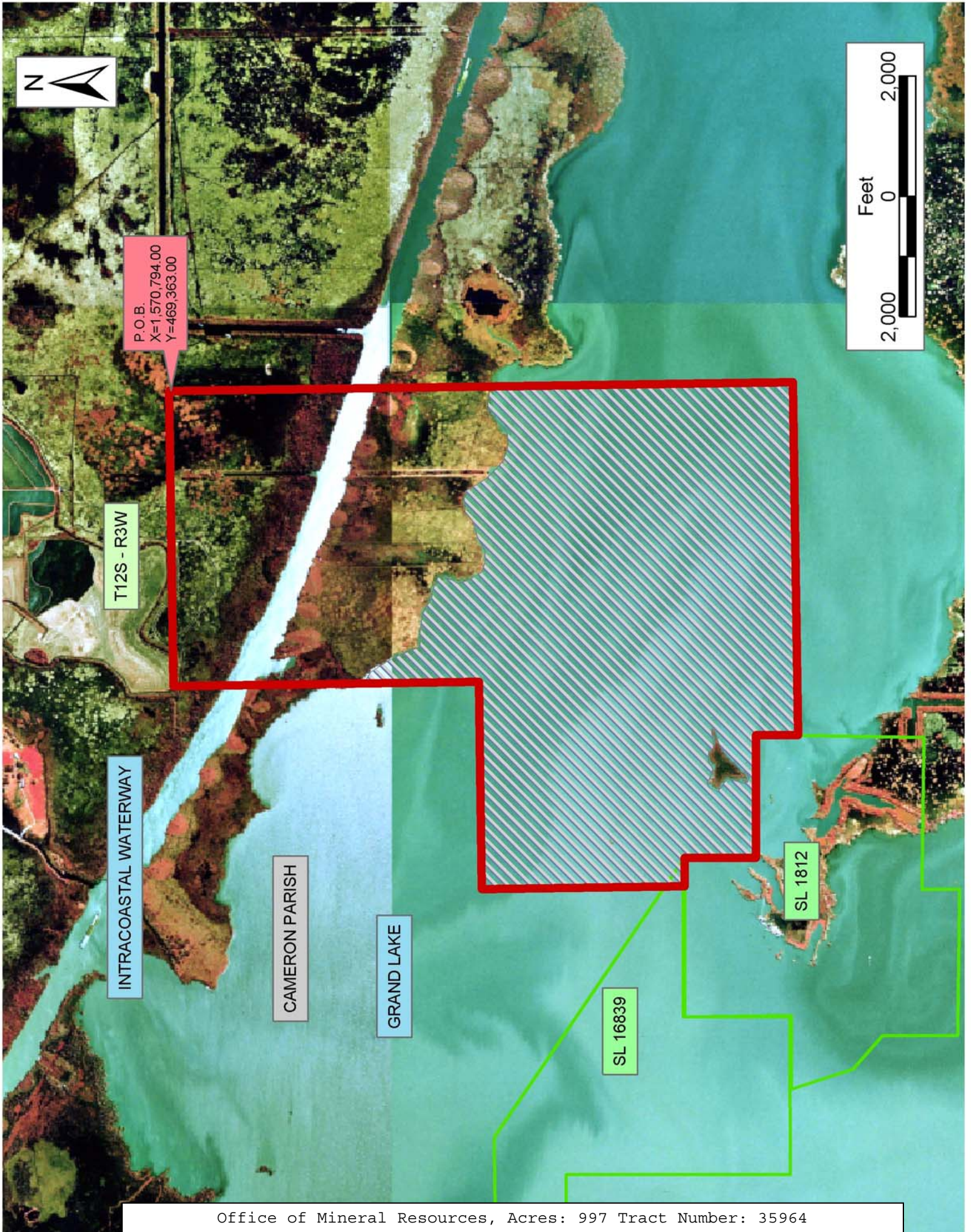
NOTE: The above description of the Tract nominated for lease has been provided and corrected, where required, exclusively by the nomination party. Any mineral lease selected from this Tract and awarded by the Louisiana State Mineral Board shall be without warranty of any kind, either express, implied, or statutory, including, but not limited to, the implied warranties of merchantability and fitness for a particular purpose. Should the mineral lease awarded by the Louisiana State Mineral Board be subsequently modified, cancelled or abrogated due to the existence of conflicting leases, operating agreements, private claims or other future obligations or conditions which may affect all or any portion of the leased Tract, it shall not relieve the Lessee of the obligation to pay any bonus due thereon to the Louisiana State Mineral Board, nor shall the Louisiana State Mineral Board be obligated to refund any consideration paid by the Lessor prior to such modification, cancellation, or abrogation, including, but not limited to, bonuses, rentals and royalties.

NOTE: The State of Louisiana does hereby reserve, and this lease shall be subject to, the imprescriptible right of surface use in the nature of a

servitude in favor of the Department of Natural Resources, including its Offices and Commissions, for the sole purpose of implementing, constructing, servicing and maintaining approved coastal zone management and/or restoration projects. Utilization of any and all rights derived under this lease by the mineral lessee, its agents, successors or assigns, shall not interfere with nor hinder the reasonable surface use by the Department of Natural Resources, its Offices or Commissions, as herein above reserved.

Applicant: Mohat Properties, L.L.C.

Bidder	Cash Payment	Price/Acre	Rental	Oil	Gas	Other



P.O.B.  
X=1,570,794.00  
Y=469,363.00

T12S - R3W

INTRACOASTAL WATERWAY

CAMERON PARISH

GRAND LAKE

SL 16839

SL 1812



**TRACT 35965 - Cameron Parish, Louisiana**

All of the lands now or formerly constituting the beds and bottoms of all water bodies of every nature and description the title of which vests in the State of Louisiana, together with all islands arising therein and other lands formed by accretion or by reliction, where allowed by law, excepting tax adjudicated lands, and not presently under mineral lease on January 14, 2004, situated in Cameron Parish, Louisiana, and more particularly described as follows: Beginning at a point having Coordinates of X = 1,555,890.00 and Y = 464,282.00; thence North 5,081.00 feet to a point having Coordinates of X = 1,555,890.00 and Y = 469,363.00; thence East 10,000.00 feet to a point having Coordinates of X = 1,565,890.00 and Y = 469,363.00; thence South 5,081.00 feet to a point having Coordinates of X = 1,565,890.00 and Y = 464,282.00; thence West 10,000.00 feet to the point of beginning, containing approximately **1,017 acres**, all as more particularly outlined on a plat on file in the Office of Mineral Resources, Department of Natural Resources. All bearings, distances and coordinates are based on Louisiana Coordinate System of 1927, (North or South Zone), where applicable.

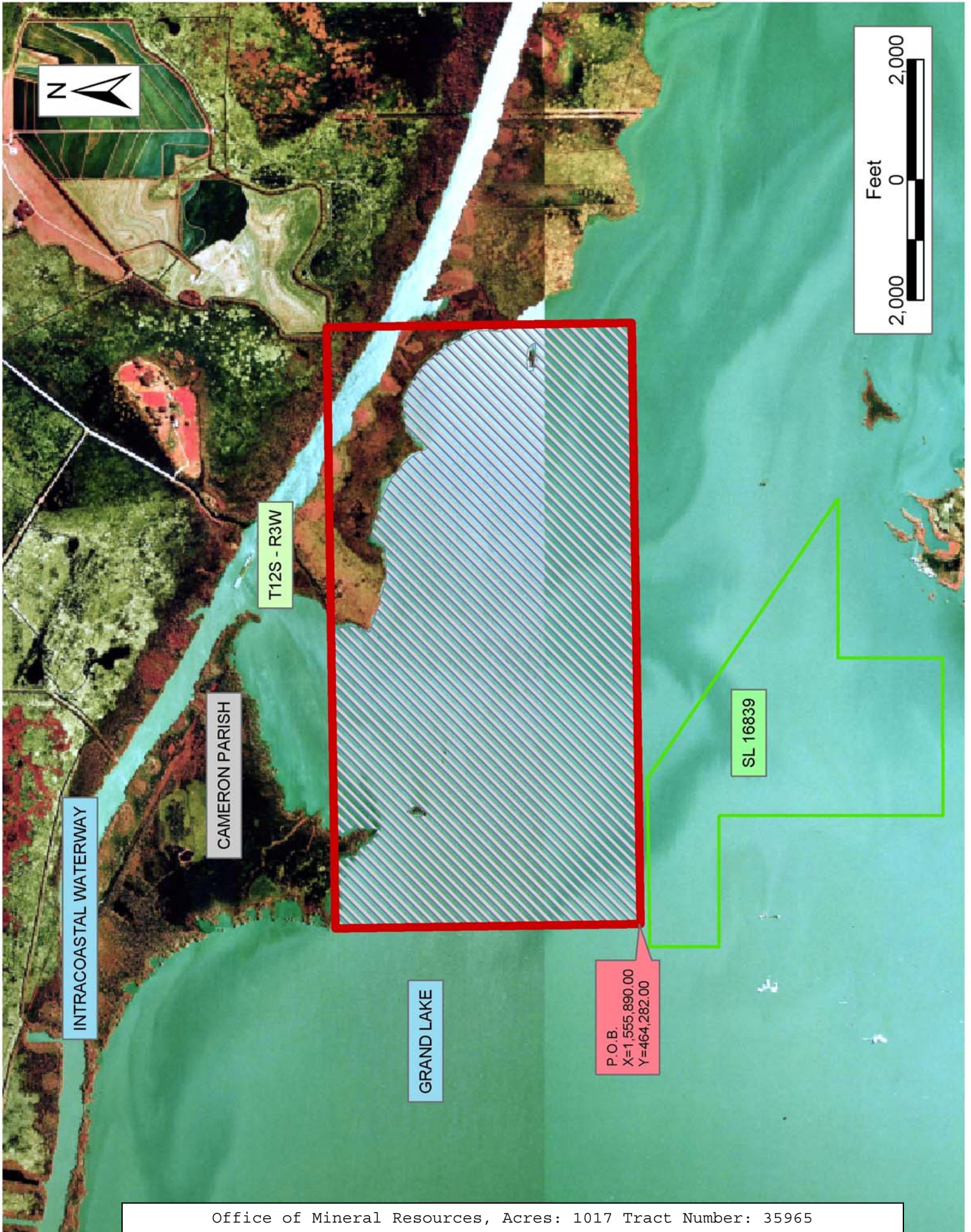
NOTE: The above description of the Tract nominated for lease has been provided and corrected, where required, exclusively by the nomination party. Any mineral lease selected from this Tract and awarded by the Louisiana State Mineral Board shall be without warranty of any kind, either express, implied, or statutory, including, but not limited to, the implied warranties of merchantability and fitness for a particular purpose. Should the mineral lease awarded by the Louisiana State Mineral Board be subsequently modified, cancelled or abrogated due to the existence of conflicting leases, operating agreements, private claims or other future obligations or conditions which may affect all or any portion of the leased Tract, it shall not relieve the Lessee of the obligation to pay any bonus due thereon to the Louisiana State Mineral Board, nor shall the Louisiana State Mineral Board be obligated to refund any consideration paid by the Lessor prior to such modification, cancellation, or abrogation, including, but not limited to, bonuses, rentals and royalties.

NOTE: The State of Louisiana does hereby reserve, and this lease shall be subject to, the imprescriptible right of surface use in the nature of a servitude in favor of the Department of Natural Resources, including its Offices and Commissions, for the sole purpose of implementing, constructing, servicing and maintaining approved coastal zone management and/or restoration projects. Utilization of any and all rights derived under this lease by the mineral lessee, its agents, successors or assigns, shall not interfere with nor hinder the reasonable surface use by the Department of Natural Resources, its Offices or Commissions, as herein above reserved.

Applicant: Mohat Properties, L.L.C.

Bidder	Cash Payment	Price/Acre	Rental	Oil	Gas	Other





**TRACT 35966 - Cameron Parish, Louisiana**

All of the lands now or formerly constituting the beds and bottoms of all water bodies of every nature and description the title of which vests in the State of Louisiana, together with all islands arising therein and other lands formed by accretion or by reliction, where allowed by law, excepting tax adjudicated lands, and not presently under mineral lease on January 14, 2004, situated in Cameron Parish, Louisiana, and more particularly described as follows: Beginning at a point having Coordinates of X = 1,555,890.00 and Y = 464,282.00; thence East 6,548.00 feet to a point having Coordinates of X = 1,562,438.00 and Y = 464,282.00; thence South 3,375.30 feet to a point on the boundary of State Lease No. 1812, as amended, having Coordinates of X = 1,562,438.00 and Y = 460,906.70; thence along the boundary of said State Lease No. 1812, the following courses: North 89 degrees 17 minutes 54 seconds West 2,168.38 feet to a point having Coordinates of X = 1,560,269.78 and Y = 460,933.25; South 00 degrees 42 minutes 06 seconds West 1,743.30 feet to a point having Coordinates of X = 1,560,248.43 and Y = 459,190.08; North 89 degrees 17 minutes 54 seconds West 1,500.00 feet to a point having Coordinates of X = 1,558,748.54 and Y = 459,208.45 and South 33 degrees 58 minutes 54 seconds East 292.23 feet to a point having Coordinates of X = 1,558,911.88 and Y = 458,966.13; thence West 1,288.58 feet to the Southeast corner of State Lease No. 377, as amended, having Coordinates of X = 1,557,623.30 and Y = 458,966.13; thence North 00 degrees 42 minutes 06 seconds East 3,985.48 feet along the East line of said State Lease No. 377, to its Northeast corner having Coordinates of X = 1,557,672.12 and Y = 462,951.31; thence North 89 degrees 17 minutes 54 seconds West 1,782.25 feet along the North line of said State Lease No. 377, to a point having Coordinates of X = 1,555,890.00 and Y = 462,973.14; thence North 1,308.86 feet to the point of beginning, containing **532.47 acres**, all as more particularly outlined on a plat on file in the Office of Mineral Resources, Department of Natural Resources. All bearings, distances and coordinates are based on Louisiana Coordinate System of 1927, (North or South Zone), where applicable.

NOTE: The above description of the Tract nominated for lease has been provided and corrected, where required, exclusively by the nomination party. Any mineral lease selected from this Tract and awarded by the Louisiana State Mineral Board shall be without warranty of any kind, either express, implied, or statutory, including, but not limited to, the implied warranties of merchantability and fitness for a particular purpose. Should the mineral lease awarded by the Louisiana State Mineral Board be subsequently modified, cancelled or abrogated due to the existence of conflicting leases, operating agreements, private claims or other future obligations or conditions which may affect all or any portion of the leased Tract, it shall not relieve the Lessee of the obligation to pay any bonus due thereon to the Louisiana State Mineral Board, nor shall the Louisiana State Mineral Board be obligated to refund any consideration paid by the Lessor prior to such modification, cancellation, or abrogation, including, but not limited to, bonuses, rentals and royalties.

NOTE: The State of Louisiana does hereby reserve, and this lease shall be subject to, the imprescriptible right of surface use in the nature of a servitude in favor of the Department of Natural Resources, including its Offices and Commissions, for the sole purpose of implementing, constructing, servicing and maintaining approved coastal zone management and/or restoration projects. Utilization of any and all rights derived under this lease by the mineral lessee, its agents, successors or assigns, shall not interfere with nor hinder the reasonable surface use by the Department of Natural Resources, its Offices or Commissions, as herein above reserved.

Applicant: Mohat Properties, L.L.C.

Bidder	Cash Payment	Price/Acre	Rental	Oil	Gas	Other



CAMERON PARISH

GRAND LAKE

P.O.B.  
X=1,555,890.00  
Y=464,282.00

SL 1812

SL 377



**TRACT 35967 - Cameron Parish, Louisiana**

All of the lands now or formerly constituting the beds and bottoms of all water bodies of every nature and description the title of which vests in the State of Louisiana, together with all islands arising therein and other lands formed by accretion or by reliction, where allowed by law, excepting tax adjudicated lands, and not presently under mineral lease on January 14, 2004, situated in Cameron Parish, Louisiana, and more particularly described as follows: Beginning at a point having Coordinates of X = 1,578,264.00 and Y = 463,998.00; thence South 6,520.00 feet to a point having Coordinates of X = 1,578,264.00 and Y = 457,478.00; thence West 7,470.00 feet to a point having Coordinates of X = 1,570,794.00 and Y = 457,478.00; thence North 6,520.00 feet to a point having Coordinates of X = 1,570,794.00 and Y = 463,998.00; thence East 7,470.00 feet to the point of beginning, containing approximately **857 acres**, all as more particularly outlined on a plat on file in the Office of Mineral Resources, Department of Natural Resources. All bearings, distances and coordinates are based on Louisiana Coordinate System of 1927, (North or South Zone), where applicable.

NOTE: The above description of the Tract nominated for lease has been provided and corrected, where required, exclusively by the nomination party. Any mineral lease selected from this Tract and awarded by the Louisiana State Mineral Board shall be without warranty of any kind, either express, implied, or statutory, including, but not limited to, the implied warranties of merchantability and fitness for a particular purpose. Should the mineral lease awarded by the Louisiana State Mineral Board be subsequently modified, cancelled or abrogated due to the existence of conflicting leases, operating agreements, private claims or other future obligations or conditions which may affect all or any portion of the leased Tract, it shall not relieve the Lessee of the obligation to pay any bonus due thereon to the Louisiana State Mineral Board, nor shall the Louisiana State Mineral Board be obligated to refund any consideration paid by the Lessor prior to such modification, cancellation, or abrogation, including, but not limited to, bonuses, rentals and royalties.

NOTE: The State of Louisiana does hereby reserve, and this lease shall be subject to, the imprescriptible right of surface use in the nature of a servitude in favor of the Department of Natural Resources, including its Offices and Commissions, for the sole purpose of implementing, constructing, servicing and maintaining approved coastal zone management and/or restoration projects. Utilization of any and all rights derived under this lease by the mineral lessee, its agents, successors or assigns, shall not interfere with nor hinder the reasonable surface use by the Department of Natural Resources, its Offices or Commissions, as herein above reserved.

Applicant: Mohat Properties, L.L.C.

Bidder	Cash Payment	Price/Acre	Rental	Oil	Gas	Other



**TRACT 35968 - Cameron Parish, Louisiana**

All of the lands now or formerly constituting the beds and bottoms of all water bodies of every nature and description the title of which vests in the State of Louisiana, together with all islands arising therein and other lands formed by accretion or by reliction, where allowed by law, excepting tax adjudicated lands, and not presently under mineral lease on January 14, 2004, situated in Cameron Parish, Louisiana, and more particularly described as follows: Beginning at a point having Coordinates of X = 1,578,264.00 and Y = 463,998.00; thence East 3,519.00 feet to a point having Coordinates of X = 1,581,783.00 and Y = 463,998.00; thence South 10,520.00 feet to a point having Coordinates of X = 1,581,783.00 and Y = 453,478.00; thence West 3,519.00 feet to a point having Coordinates of X = 1,578,264.00 and Y = 453,478.00; thence North 10,520.00 feet to the point of beginning, containing approximately **534 acres**, all as more particularly outlined on a plat on file in the Office of Mineral Resources, Department of Natural Resources. All bearings, distances and coordinates are based on Louisiana Coordinate System of 1927, (North or South Zone), where applicable.

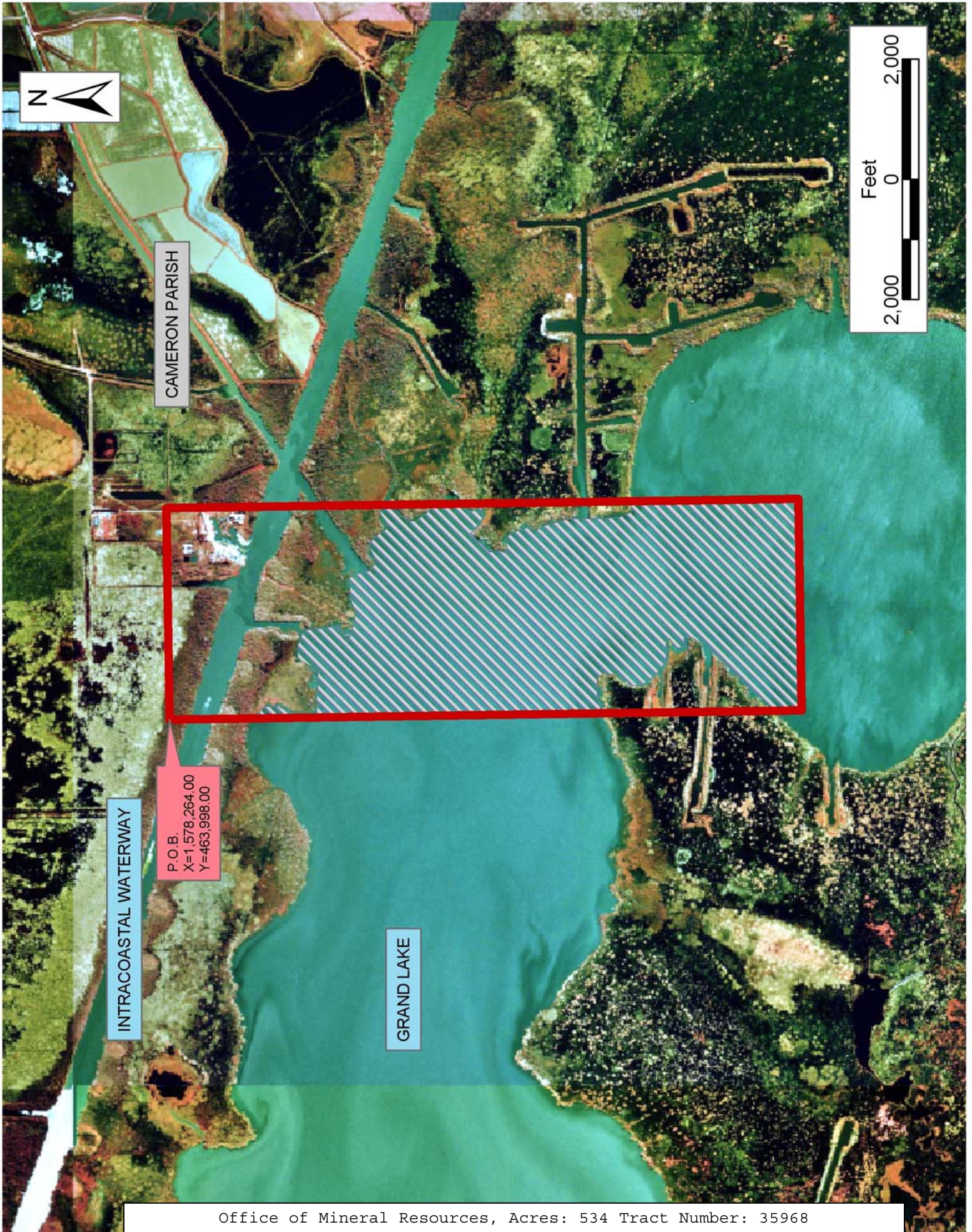
NOTE: The above description of the Tract nominated for lease has been provided and corrected, where required, exclusively by the nomination party. Any mineral lease selected from this Tract and awarded by the Louisiana State Mineral Board shall be without warranty of any kind, either express, implied, or statutory, including, but not limited to, the implied warranties of merchantability and fitness for a particular purpose. Should the mineral lease awarded by the Louisiana State Mineral Board be subsequently modified, cancelled or abrogated due to the existence of conflicting leases, operating agreements, private claims or other future obligations or conditions which may affect all or any portion of the leased Tract, it shall not relieve the Lessee of the obligation to pay any bonus due thereon to the Louisiana State Mineral Board, nor shall the Louisiana State Mineral Board be obligated to refund any consideration paid by the Lessor prior to such modification, cancellation, or abrogation, including, but not limited to, bonuses, rentals and royalties.

NOTE: The State of Louisiana does hereby reserve, and this lease shall be subject to, the imprescriptible right of surface use in the nature of a servitude in favor of the Department of Natural Resources, including its Offices and Commissions, for the sole purpose of implementing, constructing, servicing and maintaining approved coastal zone management and/or restoration projects. Utilization of any and all rights derived under this lease by the mineral lessee, its agents, successors or assigns, shall not interfere with nor hinder the reasonable surface use by the Department of Natural Resources, its Offices or Commissions, as herein above reserved.



Applicant: Mohat Properties, L.L.C.

Bidder	Cash Payment	Price/Acre	Rental	Oil	Gas	Other



CAMERON PARISH

INTRACOASTAL WATERWAY

P.O.B.  
X=1,578,264.00  
Y=463,998.00

GRAND LAKE



**TRACT 35969 - Cameron Parish, Louisiana**

All of the lands now or formerly constituting the beds and bottoms of all water bodies of every nature and description the title of which vests in the State of Louisiana, together with all islands arising therein and other lands formed by accretion or by reliction, where allowed by law, excepting tax adjudicated lands, and not presently under mineral lease on January 14, 2004, situated in Cameron Parish, Louisiana, and more particularly described as follows: Beginning at a point having Coordinates of X = 1,570,794.00 and Y = 453,765.50; thence West 11,360.00 feet to a point having Coordinates of X = 1,559,434.00 and Y = 453,765.50; thence North 4,480.05 feet to a point on the boundary of State Lease No. 1812, as amended, having Coordinates of X = 1,559,434.00 and Y = 458,245.55; thence along the boundary of said State Lease No. 1812, the following courses: South 53 degrees 06 minutes 18 seconds East 568.26 feet to a point having Coordinates of X = 1,559,888.46 and Y = 457,904.40; South 00 degrees 42 minutes 06 seconds West 1,350.00 feet to a point having Coordinates of X = 1,559,871.93 and Y = 456,554.50; South 89 degrees 17 minutes 54 seconds East 2,500.00 feet to a point having Coordinates of X = 1,562,371.74 and Y = 456,523.88; North 00 degrees 42 minutes 06 seconds East 556.10 feet to a point having Coordinates of X = 1,562,378.55 and Y = 457,079.94; South 89 degrees 17 minutes 54 seconds East 2,524.90 feet to a point having Coordinates of X = 1,564,903.26 and Y = 457,049.02 and North 00 degrees 42 minutes 06 seconds East 1,938.49 feet to a point on its East boundary, having Coordinates of X = 1,564,927.00 and Y = 458,987.36; thence East 5,867.00 feet to a point having Coordinates of X = 1,570,794.00 and Y = 458,987.36; thence South 5,221.86 feet to the point of beginning, containing approximately **642 acres**, all as more particularly outlined on a plat on file in the Office of Mineral Resources, Department of Natural Resources. All bearings, distances and coordinates are based on Louisiana Coordinate System of 1927, (North or South Zone), where applicable.

NOTE: The above description of the Tract nominated for lease has been provided and corrected, where required, exclusively by the nomination party. Any mineral lease selected from this Tract and awarded by the Louisiana State Mineral Board shall be without warranty of any kind, either express, implied, or statutory, including, but not limited to, the implied warranties of merchantability and fitness for a particular purpose. Should the mineral lease awarded by the Louisiana State Mineral Board be subsequently modified, cancelled or abrogated due to the existence of conflicting leases, operating agreements, private claims or other future obligations or conditions which may affect all or any portion of the leased Tract, it shall not relieve the Lessee of the obligation to pay any bonus due thereon to the Louisiana State Mineral Board, nor shall the Louisiana State Mineral Board be obligated to refund any consideration paid by the Lessor prior to such modification, cancellation, or abrogation, including, but not limited to, bonuses, rentals and royalties.

NOTE: The State of Louisiana does hereby reserve, and this lease shall be subject to, the imprescriptible right of surface use in the nature of a

servitude in favor of the Department of Natural Resources, including its Offices and Commissions, for the sole purpose of implementing, constructing, servicing and maintaining approved coastal zone management and/or restoration projects. Utilization of any and all rights derived under this lease by the mineral lessee, its agents, successors or assigns, shall not interfere with nor hinder the reasonable surface use by the Department of Natural Resources, its Offices or Commissions, as herein above reserved.

Applicant: Mohat Properties, L.L.C.

Bidder	Cash Payment	Price/Acre	Rental	Oil	Gas	Other

