

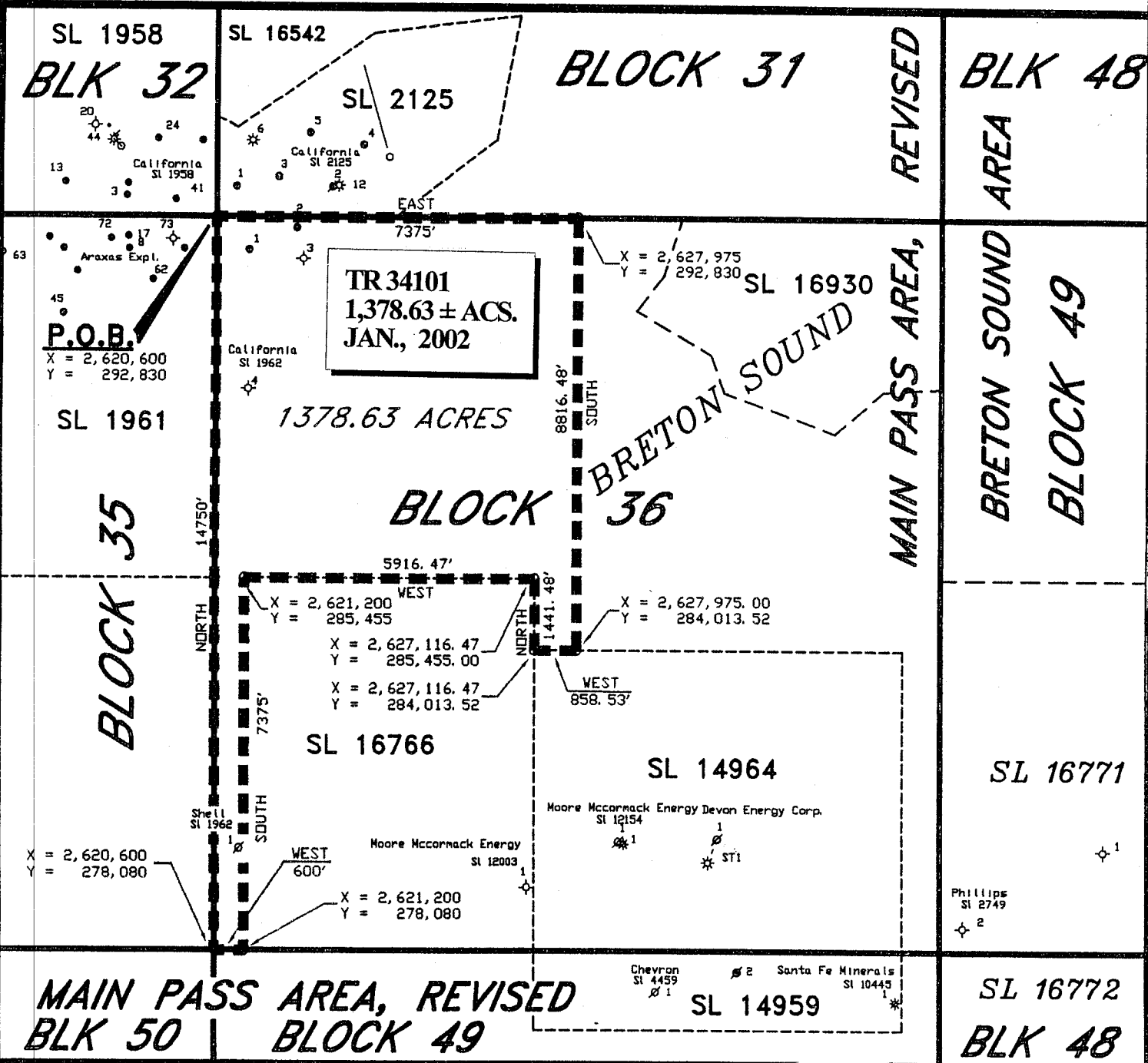
State Mineral Board, the Louisiana State Mineral Board maps shall prevail and shall provide the final property description of the lease to be awarded of the nominated tract.

Any mineral lease of the nominated tract by the Louisiana State Mineral Board shall be without warranty of any kind, either express, implied, or statutory, including, but not limited to, the implied warranties or merchantability and fitness for a particular purpose. Should the mineral lease of the nominated tract awarded by the Louisiana State Mineral Board be subsequently modified, cancelled or abrogated due to the existence of conflicting leases, operating agreements, private claims or other existing of future obligations or conditions which may affect all or any portion of the leased tract, it shall not relieve the Lessee of the obligation to pay any bonus due thereon to the Louisiana State Mineral Board, nor shall the Louisiana State Mineral Board be obligated to refund any consideration paid by the Lessee prior to such modification, cancellation, or abrogation, including, but not limited to, bonuses, rents and royalties.

NOTE: The State of Louisiana does hereby reserve, and this lease shall be subject to, the imprescriptible right of surface use in the nature of a servitude in favor of the Department of Natural Resources, including its Offices and Commissions, for the sole purpose of implementing, constructing, servicing and maintaining approved coastal zone management and/or restoration projects. Utilization of any and all rights derived under this lease by the mineral lessee, its agents, successors or assigns, shall not interfere with nor hinder the reasonable surface use by the Department of Natural Resources, its Offices or Commissions, as hereinabove reserved.

Applicant: Robert A. Schroeder, Inc.

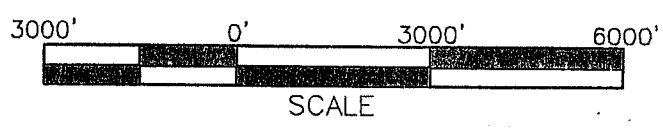
Bidder	Cash Payment	Price / Acre	Rental	Oil	Gas	Other



ALL COORDINATES, BEARINGS AND DISTANCES ARE GRID, AND ARE ON THE LOUISIANA LAMBERT PLANE COORDINATE SYSTEM, SOUTH ZONE, 1927 NORTH AMERICAN DATUM.



LOCATED IN
BLOCK 36
MAIN PASS AREA, REVISED
PLAQUEMINES PARISH, LOUISIANA
SCALE 1" = 3000'



TRACT 34102 - PORTION OF BLOCK 36, MAIN PASS AREA, REVISED, Plaquemines Parish, Louisiana

All of the lands now or formerly constituting the beds and bottoms of all water bodies of every nature and description and all islands and other lands formed by accretion or reliction, except tax lands, belonging to the State of Louisiana and not under mineral lease on January 9, 2002, situated in Plaquemines Parish, Louisiana, and more particularly described as follows: Beginning at a point having Coordinates of X = 2,635,350.00 and Y = 278,080.00, said point also being the Southeast corner of Block 36, Main Pass Area, Revised; thence West 766.48 feet on and along the south line of said Block 36, Main Pass Area, Revised, to a point having Coordinates of X = 2,634,583.52 and Y = 278,080.00, said point also being on an Eastern boundary of State of Louisiana - State Lease No. 14964; thence on and along the Eastern and Northern boundaries of said State of Louisiana - State Lease No. 14964 the following courses and distances, to-wit: North 5,933.52 feet to a point having Coordinates of X = 2,634,583.52 and Y = 284,013.52; and West 6,608.52 feet to a point having Coordinates of X = 2,627,975.00 and Y = 284,013.52; thence North 8,816.48 feet to a point having Coordinates of X = 2,627,975.00 and Y = 292,830.00, said point also being on the North line of said Block 36, Main Pass Area, Revised; thence East 2,132.63 feet on and along said North line of said Block 36, Main Pass Area, Revised, to a point having Coordinates of X = 2,630,107.63 and Y = 292,830.00, said point also being on a Western boundary of State of Louisiana - State Lease No. 16930; thence on and along the Western and Southern boundaries of said State of Louisiana - State Lease No. 16930 the following courses and distances, to-wit: South 18 degrees 00 minutes 41 seconds West 1,201.35 feet to a point having Coordinates of X = 2,629,736.16 and Y = 291,687.53; South 36 degrees 47 minutes 03 seconds West 927.12 feet to a point having Coordinates of X = 2,629,181.00 and Y = 290,945.00; South 58 degrees 55 minutes 29 seconds East 1,763.01 feet to a point having Coordinates of X = 2,630,691.00 and Y = 290,035.00; South 19 degrees 34 minutes 55 seconds East 805.59 feet to a point having Coordinates of X = 2,630,961.00 and Y = 289,276.00; South 69 degrees 26 minutes 38 seconds East 2,392.32 feet to a point having Coordinates of X = 2,633,201.00 and Y = 288,436.00; North 48 degrees 24 minutes 10 seconds East 1,310.46 feet to a point having Coordinates of X = 2,634,181.00 and Y = 289,306.00; and North 86 degrees 34 minutes 24 seconds East 1,171.09 feet to a point having Coordinates of X = 2,635,350.00 and Y = 289,376.00, said point also being on the East line of said Block 36, Main Pass Area, Revised; thence South 11,296.00 feet on and along said East line of said Block 36, Main Pass Area, Revised, to the point of beginning, containing approximately 1,133.41 acres, as shown outlined on a plat on file in the Office of Mineral Resources, Department of Natural Resources, as provided by the applicant. All bearings, distances and coordinates are based on Louisiana Coordinate System of 1927 (South Zone).

NOTE: The above description of the tract nominated for lease has been provided exclusively by the party nominating the tract for lease. The Louisiana State Mineral Board makes no representation as to the accuracy of the description of the nominated tract or its suitability for lease. The Louisiana State Mineral Board has made no inspection of the nominated tract for the existence of conflicting leases, operating agreements, private claims or other existing or future obligations or conditions which may affect all or any portion of the

nominated tract or its suitability for lease.

Maps depicting the nominated tract, containing the bearings, distances and coordinates of the nominated tract based on the Louisiana Coordinate System of 1927, North or South Zone, as applicable, are available for public inspection and review at the offices of the Louisiana State Mineral Board from 10:00 a.m. to 3:00 p.m. Monday - Friday.

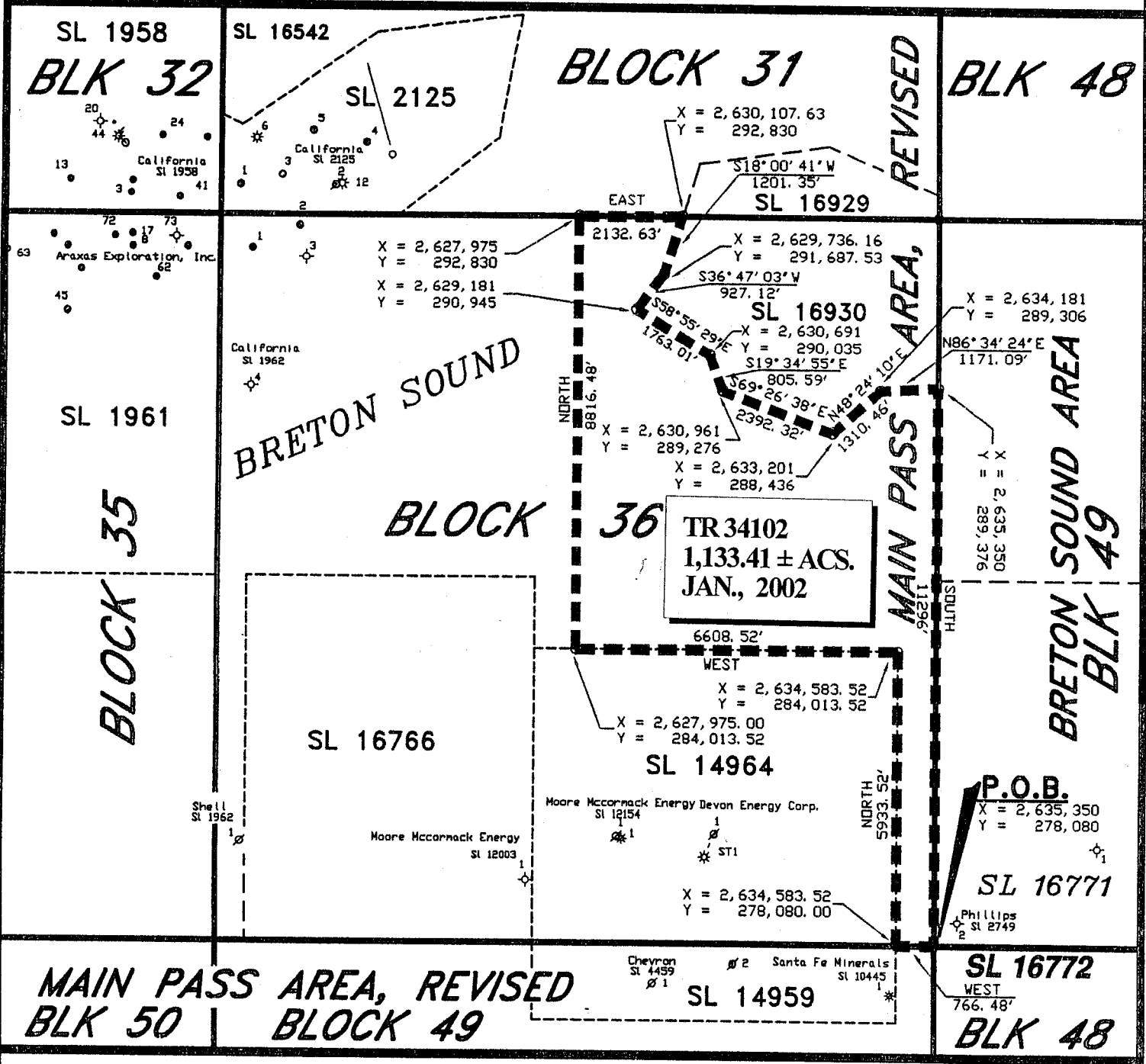
In the event of conflict between the description of the nominated tract set forth above and the description of the nominated property as contained on the maps maintained at the offices of the Louisiana State Mineral Board, the Louisiana State Mineral Board maps shall prevail and shall provide the final property description of the lease to be awarded of the nominated tract.

Any mineral lease of the nominated tract by the Louisiana State Mineral Board shall be without warranty of any kind, either express, implied, or statutory, including, but not limited to, the implied warranties or merchantability and fitness for a particular purpose. Should the mineral lease of the nominated tract awarded by the Louisiana State Mineral Board be subsequently modified, cancelled or abrogated due to the existence of conflicting leases, operating agreements, private claims or other existing or future obligations or conditions which may affect all or any portion of the leased tract, it shall not relieve the Lessee of the obligation to pay any bonus due thereon to the Louisiana State Mineral Board, nor shall the Louisiana State Mineral Board be obligated to refund any consideration paid by the Lessee prior to such modification, cancellation, or abrogation, including, but not limited to, bonuses, rents and royalties.

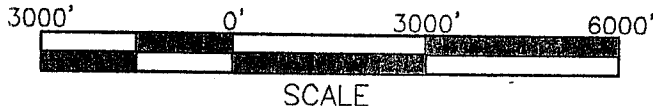
NOTE: The State of Louisiana does hereby reserve, and this lease shall be subject to, the imprescriptible right of surface use in the nature of a servitude in favor of the Department of Natural Resources, including its Offices and Commissions, for the sole purpose of implementing, constructing, servicing and maintaining approved coastal zone management and/or restoration projects. Utilization of any and all rights derived under this lease by the mineral lessee, its agents, successors or assigns, shall not interfere with nor hinder the reasonable surface use by the Department of Natural Resources, its Offices or Commissions, as hereinabove reserved.

Applicant: Robert A. Schroeder, Inc.

Bidder	Cash Payment	Price / Acre	Rental	Oil	Gas	Other



LOCATED IN
BLOCK 36
MAIN PASS AREA, REVISED
PLAQUEMINES PARISH, LOUISIANA
SCALE 1" = 3000'



ALL COORDINATES, BEARINGS AND DISTANCES ARE GRID, AND ARE ON THE LOUISIANA LAMBERT PLANE COORDINATE SYSTEM, SOUTH ZONE, 1927 NORTH AMERICAN DATUM.

TRACT 34103 - PORTION OF BLOCK 19, BRETON SOUND AREA, Plaquemines Parish, Louisiana

All of the lands now or formerly constituting the beds and bottoms of all water bodies of every nature and description and all islands and other lands formed by accretion or reliction, except tax lands, belonging to the State of Louisiana and not under mineral lease on January 9, 2002, situated in Plaquemines Parish, Louisiana, and more particularly described as follows: Beginning at the Southwest corner of State Lease No. 16823 having Coordinates of X = 2,674,200.00 and Y = 345,830.00; thence South 1,375.00 feet to a point on the North line of State Lease No. 16612 having Coordinates of X = 2,674,200.00 and Y = 344,455.00; thence West 1,331.00 feet to its Northwest corner having Coordinates of X = 2,672,869.00 and Y = 344,455.00; thence continue West to the Northeast corner of State Lease No. 16610 having Coordinates of X = 2,670,650.00 and Y = 344,455.00; thence continue West along the North line of said State Lease No. 16610 to the Southeast corner of State Lease No. 16824 having Coordinates of X = 2,668,850.00 and Y = 344,455.00; thence along the boundaries of said State Lease No. 16824 the following courses: North 10 degrees 19 minutes 37 seconds West 4,725.00 feet and North 78 degrees 19 minutes 28 seconds West 3,219.58 feet to its Northwest corner and a point on the West line of said Block 19 having Coordinates of X = 2,664,850.00 and Y = 349,755.00; thence North 2,075.00 feet to the Northwest corner of said Block 19 having Coordinates of X = 2,664,850.00 and Y = 351,830.00; thence West 9,350.00 feet along the North line of said Block 19 to a point having Coordinates of X = 2,674,200.00 and Y = 351,830.00; thence South 3,400.00 feet to the Northwest corner of said State Lease No. 16823; thence continue South 2,600.00 feet along the West line of said State Lease No. 16823 to the point of beginning, containing approximately **1,177.78 acres**, as shown outlined on a plat on file in the Office of Mineral Resources, Department of Natural Resources, as provided by the applicant. All bearings, distances and coordinates are based on Louisiana Coordinate System of 1927 (South Zone).

NOTE: The above description of the tract nominated for lease has been provided exclusively by the party nominating the tract for lease. The Louisiana State Mineral Board makes no representation as to the accuracy of the description of the nominated tract or its suitability for lease. The Louisiana State Mineral Board has made no inspection of the nominated tract for the existence of conflicting leases, operating agreements, private claims or other existing or future obligations or conditions which may affect all or any portion of the nominated tract or its suitability for lease.

Maps depicting the nominated tract, containing the bearings, distances and coordinates of the nominated tract based on the Louisiana Coordinate System of 1927, North or South Zone, as applicable, are available for public inspection and review at the offices of the Louisiana State Mineral Board from 10:00 a.m. to 3:00 p.m. Monday - Friday.

In the event of conflict between the description of the nominated tract set forth above and the description of the nominated property as contained on the maps maintained at the offices of the Louisiana State Mineral Board, the Louisiana State Mineral Board maps shall prevail and shall provide the final property description of the lease to be awarded of the nominated tract.

Any mineral lease of the nominated tract by the Louisiana State Mineral Board shall be without warranty of any kind, either express, implied, or statutory, including, but not limited to, the implied warranties or merchantability and fitness for a particular purpose. Should the mineral lease of the nominated tract awarded by the Louisiana State Mineral Board be subsequently modified, cancelled or abrogated due to the existence of conflicting leases, operating agreements, private claims or other existing of future obligations or conditions which may affect all or any portion of the leased tract, it shall not relieve the Lessee of the obligation to pay any bonus due thereon to the Louisiana State Mineral Board, nor shall the Louisiana State Mineral Board be obligated to refund any consideration paid by the Lessee prior to such modification, cancellation, or abrogation, including, but not limited to, bonuses, rents and royalties.

NOTE: The State of Louisiana does hereby reserve, and this lease shall be subject to, the imprescriptible right of surface use in the nature of a servitude in favor of the Department of Natural Resources, including its Offices and Commissions, for the sole purpose of implementing, constructing, servicing and maintaining approved coastal zone management and/or restoration projects. Utilization of any and all rights derived under this lease by the mineral lessee, its agents, successors or assigns, shall not interfere with nor hinder the reasonable surface use by the Department of Natural Resources, its Offices or Commissions, as hereinabove reserved.

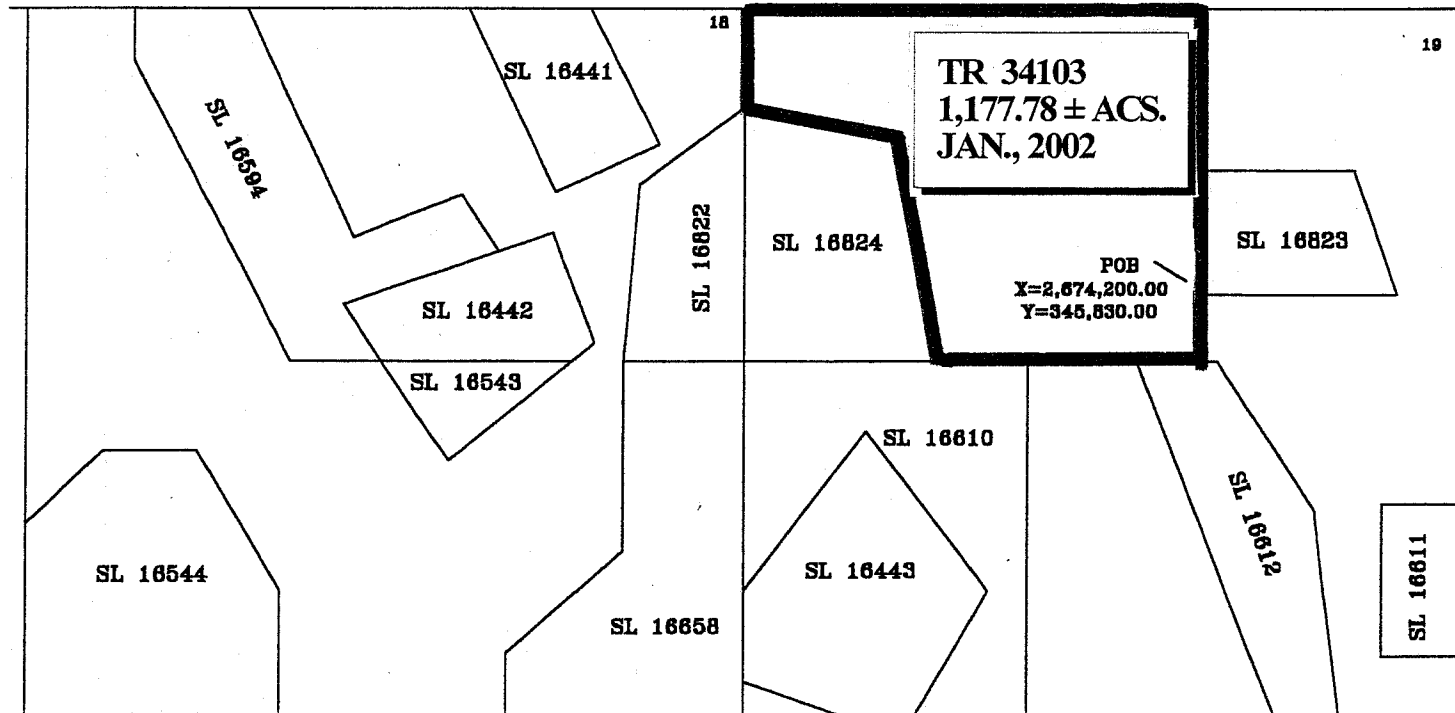
Applicant: Cummings Land Service

Bidder	Cash Payment	Price / Acre	Rental	Oil	Gas	Other



SCALE: 1" = 4,000'

BRETON SOUND AREA
PLAQUEMINES PARISH



061

TRACT 34104 - PORTION OF BLOCK 17, BRETON SOUND AREA, Plaquemines Parish, Louisiana

All of the lands now or formerly constituting the beds and bottoms of all water bodies of every nature and description and all islands and other lands formed by accretion or reliction, except tax lands, belonging to the State of Louisiana and not under mineral lease on January 9, 2002, situated in Plaquemines Parish, Louisiana, and more particularly described as follows: Beginning at the most Southern Southeast corner of State Lease No. 16894 having Coordinates of X = 2,640,145.49 and Y = 344,455.00; thence along the boundaries of said State Lease No. 16894 the following courses: North 07 degrees 08 minutes 14 seconds East 3,537.41 feet, South 88 degrees 47 minutes 25 seconds East 5,921.32 feet and North 29 degrees 41 minutes 27 seconds West 4,593.01 feet to the most North Northeast corner of said State Lease No. 16894 and a point on the North line of said Block 17 having Coordinates of X = 2,644,230.00 and Y = 351,830.00; thence East 5,870.00 feet along the North line of said Block 17 to the Northeast corner of said Block 17 having Coordinates of X = 2,650,100.00 and Y = 351,830.00; thence South 7,375.00 feet along the East line of said Block 17 to a point having Coordinates of X = 2,650,100.00 and Y = 344,455.00; thence West 9,954.51 feet to the point of beginning, containing approximately **1,199.09 acres**, as shown outlined on a plat on file in the Office of Mineral Resources, Department of Natural Resources, as provided by the applicant. All bearings, distances and coordinates are based on Louisiana Coordinate System of 1927 (South Zone).

NOTE: The above description of the tract nominated for lease has been provided exclusively by the party nominating the tract for lease. The Louisiana State Mineral Board makes no representation as to the accuracy of the description of the nominated tract or its suitability for lease. The Louisiana State Mineral Board has made no inspection of the nominated tract for the existence of conflicting leases, operating agreements, private claims or other existing or future obligations or conditions which may affect all or any portion of the nominated tract or its suitability for lease.

Maps depicting the nominated tract, containing the bearings, distances and coordinates of the nominated tract based on the Louisiana Coordinate System of 1927, North or South Zone, as applicable, are available for public inspection and review at the offices of the Louisiana State Mineral Board from 10:00 a.m. to 3:00 p.m. Monday - Friday.

In the event of conflict between the description of the nominated tract set forth above and the description of the nominated property as contained on the maps maintained at the offices of the Louisiana State Mineral Board, the Louisiana State Mineral Board maps shall prevail and shall provide the final property description of the lease to be awarded of the nominated tract.

Any mineral lease of the nominated tract by the Louisiana State Mineral Board shall be without warranty of any kind, either express, implied, or statutory, including, but not limited to, the implied warranties or merchantability and fitness for a particular purpose. Should the mineral lease of the nominated tract awarded by the Louisiana State Mineral Board be subsequently modified, cancelled or abrogated due to the existence of conflicting leases, operating agreements, private claims or other existing of future

obligations or conditions which may affect all or any portion of the leased tract, it shall not relieve the Lessee of the obligation to pay any bonus due thereon to the Louisiana State Mineral Board, nor shall the Louisiana State Mineral Board be obligated to refund any consideration paid by the Lessee prior to such modification, cancellation, or abrogation, including, but not limited to, bonuses, rents and royalties.

NOTE: It appears, according to our records, that a portion of this tract is located within the restrictive safety fairway area as set out by the Corps of Engineers, U.S. Army.

NOTE: The State of Louisiana does hereby reserve, and this lease shall be subject to, the imprescriptible right of surface use in the nature of a servitude in favor of the Department of Natural Resources, including its Offices and Commissions, for the sole purpose of implementing, constructing, servicing and maintaining approved coastal zone management and/or restoration projects. Utilization of any and all rights derived under this lease by the mineral lessee, its agents, successors or assigns, shall not interfere with nor hinder the reasonable surface use by the Department of Natural Resources, its Offices or Commissions, as hereinabove reserved.

Applicant: Cummings Land Service

Bidder	Cash Payment	Price / Acre	Rental	Oil	Gas	Other