

**TRACT 33024 - PORTION OF BLOCK 121, SOUTH TIMBALIER AREA, REVISED,  
Terrebonne Parish, Louisiana**

That portion of Block 121, South Timbalier Area, Revised, Terrebonne Parish, Louisiana, belonging to the State of Louisiana and not under mineral lease on January 10, 2001, described as follows: Beginning at the Northwest corner of Block 121, South Timbalier Area, Revised, having Coordinates of X = 2,242,289.88 and Y = 160,462.80; thence East 6,600.00 feet on the North line of said Block 121 to the Northwest corner of the Western portion of State Lease No. 2857, as amended, having Coordinates of X = 2,248,889.88 and Y = 160,462.80; thence South 45 degrees 00 minutes 00 seconds West 9,333.81 feet on the Northwest boundary of the said Western portion of said State Lease No. 2857 to its Northwest corner on the West line of said Block 121 having Coordinates of X = 2,242,289.88 and Y = 153,862.80; thence North 6,600.00 feet on the West line of said Block 121 to the point of beginning, containing approximately **500.00 acres**, as shown outlined in red on a plat on file in the Office of Mineral Resources, Department of Natural Resources. All bearings, distances and coordinates are based on Louisiana Coordinate System of 1927 (South Zone).

NOTE: The above tract is located in or near an oyster restricted area and all operations in such area must be conducted in strict conformity with the stipulations and/or regulations of the Louisiana Department of Wildlife and Fisheries.

NOTE: It appears, according to our records, that a portion of this tract is located within the restrictive safety fairway area as set out by the Corps of Engineers, U.S. Army.

NOTE: The State of Louisiana does hereby reserve, and this lease shall be subject to, the imprescriptible right of surface use in the nature of a servitude in favor of the Department of Natural Resources, including its Offices and Commissions, for the sole purpose of implementing, constructing, servicing and maintaining approved coastal zone management and/or restoration projects. Utilization of any and all rights derived under this lease by the mineral lessee, its agents, successors or assigns, shall not interfere with nor hinder the reasonable surface use by the Department of Natural Resources, its Offices or Commissions, as hereinabove reserved.

Applicant: D. Andrews

Bidder	Cash Payment	Price / Acre	Rental	Oil	Gas	Other



T E R R E B O N N E B A Y

P.O.B.  
X=2,242,289.88  
Y= 160,462.80

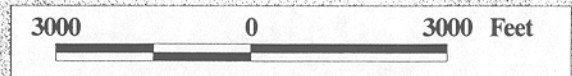
TR 33024  
500.00 +/- ACS.  
JAN., 2001

SL 2857

BLOCK 121

CAILLOU ISLAND OIL

SOUTH TIMBALIER AREA, REVISED  
TERREBONNE PARISH



**TRACT 33025 - PORTION OF BLOCK 121, SOUTH TIMBALIER AREA, REVISED,  
Terrebonne Parish, Louisiana**

That portion of Block 121, South Timbalier Area, Revised, Terrebonne Parish, Louisiana, belonging to the State of Louisiana and not under mineral lease on January 10, 2001, described as follows: Beginning at the Southwest corner of Block 121, South Timbalier Area, Revised, having Coordinates of X = 2,242,289.88 and Y = 141,553.53; thence North 11,200.00 feet on the West line of said Block 121 to the Southwest corner of the Western portion of State Lease No. 2857, as amended, having Coordinates of X = 2,242,289.88 and Y = 152,753.53; thence on the boundary of the said Western portion of said State Lease No. 2857 the following courses: East 4,700.00 feet, North 1,300.00 feet, East 2,300.00 feet and North 6,409.27 feet to its Northeast corner on the North line of said Block 121 having Coordinates of X = 2,249,289.88 and Y = 160,462.80; thence East 3,221.44 feet on the North line of said Block 121 to the Northwest corner of the Eastern portion of said State Lease No. 2857 having Coordinates of X = 2,252,511.32 and Y = 160,462.80; thence Southwesterly and Southeasterly on the West boundary of the said Eastern portion of said State Lease No. 2857 to its Southernmost point on the East line of said Block 121 having Coordinates of X = 2,253,808.04 and Y = 154,158.04; thence South 713.19 feet on the East line of said Block 121 to the Northernmost Northeast corner of State Lease No. 15107 having Coordinates of X = 2,253,808.04 and Y = 153,444.85; thence on the boundary of said State Lease No. 15107 the following courses: North 37 degrees 22 minutes 43 seconds West 765.98 feet, West 235.63 feet, South 76 degrees 17 minutes 04 seconds West 7,410.68 feet, South 6,342.42, West 2,000.00 feet and South 4,400.00 feet to its Southwest corner on the South line of said Block 121 having Coordinates of X = 2,243,908.04 and Y = 141,553.53; thence West 1,618.16 feet on the South line of said Block 121 to the point of beginning, containing approximately 1,377.60 acres, as shown outlined in red on a plat on file in the Office of Mineral Resources, Department of Natural Resources. All bearings, distances and coordinates are based on Louisiana Coordinate System of 1927 (South Zone).

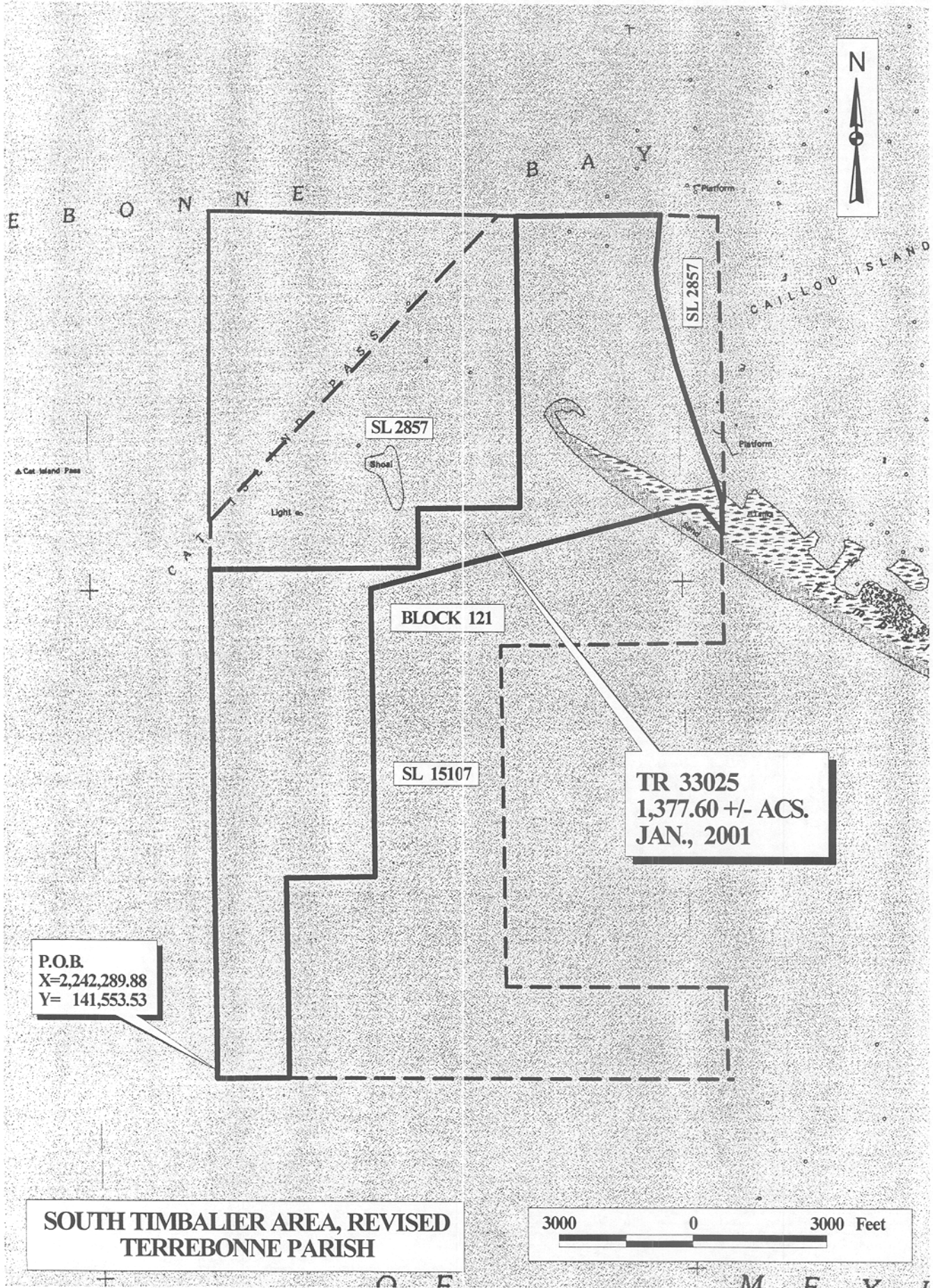
NOTE: The above tract is located in or near an oyster restricted area and all operations in such area must be conducted in strict conformity with the stipulations and/or regulations of the Louisiana Department of Wildlife and Fisheries.

NOTE: It appears, according to our records, that a portion of this tract is located within the restrictive safety fairway area as set out by the Corps of Engineers, U.S. Army.

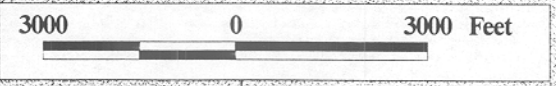
NOTE: The State of Louisiana does hereby reserve, and this lease shall be subject to, the imprescriptible right of surface use in the nature of a servitude in favor of the Department of Natural Resources, including its Offices and Commissions, for the sole purpose of implementing, constructing, servicing and maintaining approved coastal zone management and/or restoration projects. Utilization of any and all rights derived under this lease by the mineral lessee, its agents, successors or assigns, shall not interfere with nor hinder the reasonable surface use by the Department of Natural Resources, its Offices or Commissions, as hereinabove reserved.

Applicant: D. Andrews

Bidder	Cash Payment	Price / Acre	Rental	Oil	Gas	Other



**SOUTH TIMBALIER AREA, REVISED  
TERREBONNE PARISH**



**TRACT 33026 - PORTION OF BLOCK 121, SOUTH TIMBALIER AREA, REVISED,  
Terrebonne Parish, Louisiana**

That portion of Block 121, South Timbalier Area, Revised, Terrebonne Parish, Louisiana, belonging to the State of Louisiana and not under mineral lease on January 10, 2001, described as follows: Beginning at a point on the East line of Block 121, South Timbalier Area, Revised, also being the Southernmost Northeast corner of State Lease No. 15107 having Coordinates of X = 2,253,808.04 and Y = 143,403.53; thence on the inner boundary of said State Lease No. 15107 the following courses: West 4,950.00 feet, North 7,604.64 feet and East 4,950.00 feet to its Northernmost Southeast corner on the East line of said Block 121 having Coordinates of X = 2,253,808.04 and Y = 151,008.17; thence South 7,604.64 feet on the East line of said Block 121 to the point of beginning, containing approximately **864.16 acres**, as shown outlined in red on a plat on file in the Office of Mineral Resources, Department of Natural Resources. All bearings, distances and coordinates are based on Louisiana Coordinate System of 1927 (South Zone).

NOTE: The above tract is located in or near an oyster restricted area and all operations in such area must be conducted in strict conformity with the stipulations and/or regulations of the Louisiana Department of Wildlife and Fisheries.

NOTE: It appears, according to our records, that a portion of this tract is located within the restrictive safety fairway area as set out by the Corps of Engineers, U.S. Army.

NOTE: The State of Louisiana does hereby reserve, and this lease shall be subject to, the imprescriptible right of surface use in the nature of a servitude in favor of the Department of Natural Resources, including its Offices and Commissions, for the sole purpose of implementing, constructing, servicing and maintaining approved coastal zone management and/or restoration projects. Utilization of any and all rights derived under this lease by the mineral lessee, its agents, successors or assigns, shall not interfere with nor hinder the reasonable surface use by the Department of Natural Resources, its Offices or Commissions, as hereinabove reserved.

Applicant: D. Andrews

Bidder	Cash Payment	Price / Acre	Rental	Oil	Gas	Other

