

**TRACT 33019 - PORTION OF BLOCK 120, SOUTH TIMBALIER AREA, REVISED,
Terrebonne Parish, Louisiana**

That portion of Block 120, South Timbalier Area, Revised, Terrebonne Parish, Louisiana, belonging to the State of Louisiana and not under mineral lease on January 10, 2001, described as follows: Beginning at the Northwest corner of Block 120, South Timbalier Area, Revised, having Coordinates of X = 2,230,771.72 and Y = 160,462.80; thence East 11,518.16 feet on the North line of said Block 120 to its Northeast corner having Coordinates of X = 2,242,289.88 and Y = 160,462.80; thence South 9,454.63 feet on the East line of said Block 120 to a point having Coordinates of X = 2,242,289.88 and Y = 151,008.17; thence West 11,518.16 feet to a point on the West line of said Block 120 having Coordinates of X = 2,230,771.72 and Y = 151,008.17; thence North 9,454.63 feet on the West line of said Block 120 to the point of beginning, containing approximately **2,500.00 acres**, as shown outlined in red on a plat on file in the Office of Mineral Resources, Department of Natural Resources. All bearings, distances and coordinates are based on Louisiana Coordinate System of 1927 (South Zone).

NOTE: The above tract is located in or near an oyster restricted area and all operations in such area must be conducted in strict conformity with the stipulations and/or regulations of the Louisiana Department of Wildlife and Fisheries.

NOTE: It appears, according to our records, that a portion of this tract is located within the restrictive safety fairway area as set out by the Corps of Engineers, U.S. Army.

NOTE: The State of Louisiana does hereby reserve, and this lease shall be subject to, the imprescriptible right of surface use in the nature of a servitude in favor of the Department of Natural Resources, including its Offices and Commissions, for the sole purpose of implementing, constructing, servicing and maintaining approved coastal zone management and/or restoration projects. Utilization of any and all rights derived under this lease by the mineral lessee, its agents, successors or assigns, shall not interfere with nor hinder the reasonable surface use by the Department of Natural Resources, its Offices or Commissions, as hereinabove reserved.

Applicant: D. Andrews

Bidder	Cash Payment	Price / Acre	Rental	Oil	Gas	Other

P.O.B.
X= 2,230,771.72
Y= 160,462.80



TR 33019
2500.00 ± ACS.
JAN., 2001

BLK.120

TERREBONNE PARISH
SOUTH TIMBALIER AREA., REV.

2000 0 2000 Feet

57

**TRACT 33020 - PORTION OF BLOCK 120, SOUTH TIMBALIER AREA, REVISED,
Terrebonne Parish, Louisiana**

That portion of Block 120, South Timbalier Area, Revised, Terrebonne Parish, Louisiana, belonging to the State of Louisiana and not under mineral lease on January 10, 2001, described as follows: Beginning at the Southwest corner of Block 120, South Timbalier Area, Revised, having Coordinates of X = 2,230,771.22 and Y = 141,553.53; thence North 9,454.64 feet on the West line of said Block 120 to a point having Coordinates of X = 2,230,771.72 and Y = 151,008.17; thence East 11,518.16 feet to a point on the East line of said Block 120 having Coordinates of X = 2,242,289.88 and Y = 151,008.17; thence South 9,454.64 feet on the East line of said Block 120 to its Southeast corner having Coordinates of X = 2,242,289.88 and Y = 141,553.53; thence West 11,518.16 feet on the South line of said Block 120 to the point of beginning, containing approximately **2,500.00 acres**, as shown outlined in red on a plat on file in the Office of Mineral Resources, Department of Natural Resources. All bearings, distances and coordinates are based on Louisiana Coordinate System of 1927 (South Zone).

NOTE: The above tract is located in or near an oyster restricted area and all operations in such area must be conducted in strict conformity with the stipulations and/or regulations of the Louisiana Department of Wildlife and Fisheries.

NOTE: It appears, according to our records, that a portion of this tract is located within the restrictive safety fairway area as set out by the Corps of Engineers, U.S. Army.

NOTE: The State of Louisiana does hereby reserve, and this lease shall be subject to, the imprescriptible right of surface use in the nature of a servitude in favor of the Department of Natural Resources, including its Offices and Commissions, for the sole purpose of implementing, constructing, servicing and maintaining approved coastal zone management and/or restoration projects. Utilization of any and all rights derived under this lease by the mineral lessee, its agents, successors or assigns, shall not interfere with nor hinder the reasonable surface use by the Department of Natural Resources, its Offices or Commissions, as hereinabove reserved.

Applicant: D. Andrews

Bidder	Cash Payment	Price / Acre	Rental	Oil	Gas	Other

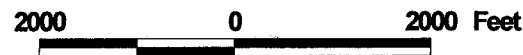


BLK.120

TR 33020
2500.00 ± ACS.
JAN., 2001

P.O.B.
X= 2,230,771.72
Y= 141,553.53

SOUTH TIMBALIER AREA, REVISED
TERREBONNE PARISH



59

TRACT 33021 - PORTION OF BLOCK 9, SOUTH TIMBALIER AREA, REVISED, Terrebonne Parish, Louisiana

That portion of Block 9, South Timbalier Area, Revised, Terrebonne Parish, Louisiana, belonging to the State of Louisiana and not under mineral lease on January 10, 2001, described as follows: Beginning at the Southwest corner of Block 9, South Timbalier Area, Revised, having Coordinates of X = 2,217,646.02 and Y = 127,591.99; thence North 2,023.56 feet along the West line of said Block 9 to the Southwest corner of State Lease No. 4238, as amended, having Coordinates of X = 2,217,646.02 and Y = 129,615.55; thence North 61 degrees 11 minutes 51 seconds East approximately 798 feet along the Southeastern boundary of said State Lease No. 4238 to the Southwest corner of State Lease No. 14907; thence East approximately 7,950 feet along the South boundary of said State Lease No. 14907 to its Southeast corner; thence North approximately 4,371 feet along the East boundary of said State Lease No. 14907 to its Northeast corner, also being the most Eastern corner of said State Lease No. 4238, also being the most Southerly Southwest corner of State Lease No. 15989; thence East 4,476.39 feet along the South line of said State Lease No. 15989 to its Southeast corner having Coordinates of X = 2,230,771.72 and Y = 134,371.05; thence North 7,182.48 feet along the East boundary of said State Lease No. 15989 to its Northeast corner, also being a point on the North line of said Block 9 having Coordinates of X = 2,230,771.72 and Y = 141,553.53; thence East 2,474.30 feet along the North line of said Block to its Northwest corner having Coordinates of X = 2,233,246.02 and Y = 141,553.53; thence South 11,123.57 feet along the East line of said Block 9 to a point having Coordinates of X = 2,233,246.02 and Y = 130,429.96; thence Southwesterly on a straight line to a point having Coordinates of X = 2,229,997 and Y = 129,637; thence Southwesterly on a straight line to a point having Coordinates of X = 2,228,299 and Y = 128,761; thence Southwesterly on an arc having a radius of 18,240.60 feet and a center at X = 2,219,935 and Y = 144,971 to a point having Coordinates of X = 2,227,466 and Y = 128,358; thence Southwesterly on a straight line to a point on the South line of said Block 9 having Coordinates of X = 2,225,776.24 and Y = 127,591.99; thence West 8,130.22 feet along the South line of said Block 9 to the point of beginning, containing approximately 1,687 acres, as shown outlined in red on a plat on file in the Office of Mineral Resources, Department of Natural Resources, **LESS AND EXCEPT** that portion thereof, if any, which is more than three nautical miles from the coast line as determined by the Report of the Special Master in the litigation in the Supreme Court of the United States styled United States v. State of Louisiana et al No. 9 Original, said three mile line as set out in the June, 1975, decree of the Supreme Court. All bearings, distances and coordinates are based on Louisiana Coordinate System of 1927 (South Zone).

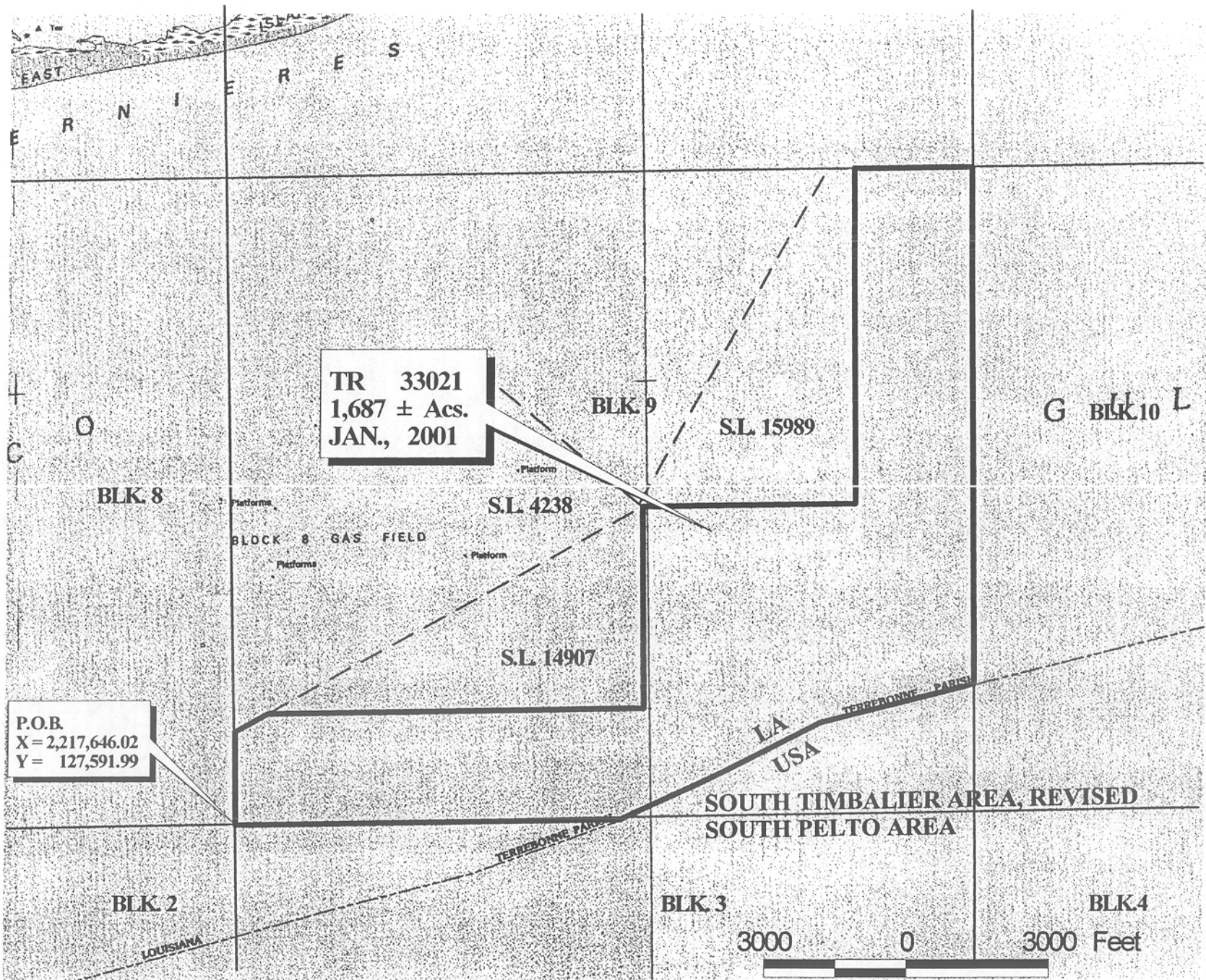
NOTE: The above tract is located in or near an oyster restricted area and all operations in such area must be conducted in strict conformity with the stipulations and/or regulations of the Louisiana Department of Wildlife and Fisheries.

NOTE: The State of Louisiana does hereby reserve, and this lease shall be subject to, the imprescriptible right of surface use in the nature of a servitude in favor of the Department of Natural Resources, including its Offices and Commissions, for the sole purpose of implementing, constructing, servicing and maintaining approved

coastal zone management and/or restoration projects. Utilization of any and all rights derived under this lease by the mineral lessee, its agents, successors or assigns, shall not interfere with nor hinder the reasonable surface use by the Department of Natural Resources, its Offices or Commissions, as hereinabove reserved.

Applicant: D. Andrews

Bidder	Cash Payment	Price / Acre	Rental	Oil	Gas	Other



TRACT 33022 - PORTION OF BLOCK 10, SOUTH TIMBALIER AREA, REVISED, Terrebonne Parish, Louisiana

That portion of Block 10, South Timbalier Area, Revised, Terrebonne Parish, Louisiana, belonging to the State of Louisiana and not under mineral lease on January 10, 2001, described as follows: Beginning at the Northwest corner of Block 10, South Timbalier Area, Revised, having Coordinates of X = 2,233,246.02 and Y = 141,553.53; thence East 15,600.00 feet on the North line of said Block 10 to its Northeast corner having Coordinates of X = 2,248,846.02 and Y = 141,553.53; thence South 6,980.77 feet on the East line of said Block 10 to a point having Coordinates of X = 2,248,846.02 and Y = 134,572.76; thence West 15,600.00 feet to a point on the West line of said Block 10 having Coordinates of X = 2,233,246.02 and Y = 134,572.76; thence North 6,980.77 feet on the West line of said Block 10 to the point of beginning, containing approximately 2,500.00 acres, as shown outlined in red on a plat on file in the Office of Mineral Resources, Department of Natural Resources. All bearings, distances and coordinates are based on Louisiana Coordinate System of 1927 (South Zone).

NOTE: The above tract is located in or near an oyster restricted area and all operations in such area must be conducted in strict conformity with the stipulations and/or regulations of the Louisiana Department of Wildlife and Fisheries.

NOTE: The State of Louisiana does hereby reserve, and this lease shall be subject to, the imprescriptible right of surface use in the nature of a servitude in favor of the Department of Natural Resources, including its Offices and Commissions, for the sole purpose of implementing, constructing, servicing and maintaining approved coastal zone management and/or restoration projects. Utilization of any and all rights derived under this lease by the mineral lessee, its agents, successors or assigns, shall not interfere with nor hinder the reasonable surface use by the Department of Natural Resources, its Offices or Commissions, as hereinabove reserved.

Applicant: D. Andrews

Bidder	Cash Payment	Price / Acre	Rental	Oil	Gas	Other



P.O.B.
X= 2,233,246.02
Y= 141,553.53

BLOCK 10

TR 33022
2500.00 ± ACS.
JAN., 2001

TERREBONNE PARISH
SOUTH TIMBALIER AREA, REV.

LA
USA



TRACT 33023 - PORTION OF BLOCK 10, SOUTH TIMBALIER AREA, REVISED, Terrebonne Parish, Louisiana

That portion of Block 10, South Timbalier Area, Revised, Terrebonne Parish, Louisiana, belonging to the State of Louisiana and not under mineral lease on January 10, 2001, described as follows: Beginning at a point on the West line of Block 10, South Timbalier Area, Revised, having Coordinates of X = 2,233,246.02 and Y = 134,572.76; thence East 15,600.00 feet to a point on the East line of said Block 10 having Coordinates of X = 2,248,846.02 and Y = 134,572.76; thence South 335.43 feet along the East line of said Block 10 to a point having Coordinates of X = 2,248,846.02 and Y = 134,237.33; thence Southwesterly on a straight line to a point on the West line of said Block 10 having Coordinates of X = 2,233,246.02 and Y = 130,429.96; thence North 4,142.80 feet on the West line of said Block 10 to the point of beginning, containing approximately **801.89 acres**, as shown outlined in red on a plat on file in the Office of Mineral Resources, Department of Natural Resources, **LESS AND EXCEPT** that portion thereof, if any, which is more than three nautical miles from the coast line as determined by the Report of the Special Master in the litigation in the Supreme Court of the United States styled United States v. State of Louisiana et al No. 9 Original, said three mile line as set out in the June, 1975, decree of the Supreme Court. All bearings, distances and coordinates are based on Louisiana Coordinate System of 1927 (South Zone).

NOTE: The above tract is located in or near an oyster restricted area and all operations in such area must be conducted in strict conformity with the stipulations and/or regulations of the Louisiana Department of Wildlife and Fisheries.

NOTE: The State of Louisiana does hereby reserve, and this lease shall be subject to, the imprescriptible right of surface use in the nature of a servitude in favor of the Department of Natural Resources, including its Offices and Commissions, for the sole purpose of implementing, constructing, servicing and maintaining approved coastal zone management and/or restoration projects. Utilization of any and all rights derived under this lease by the mineral lessee, its agents, successors or assigns, shall not interfere with nor hinder the reasonable surface use by the Department of Natural Resources, its Offices or Commissions, as hereinabove reserved.

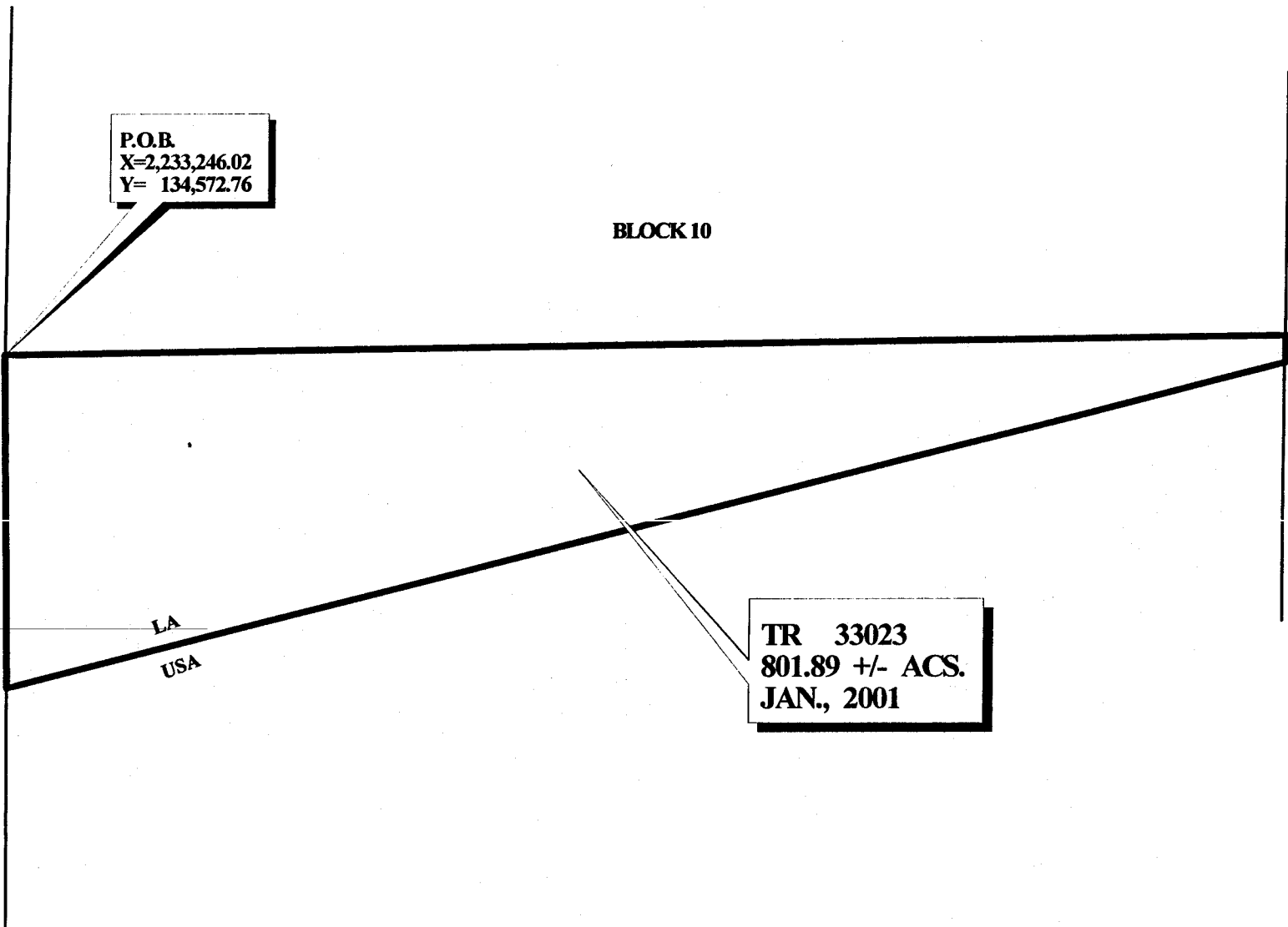
Applicant: D. Andrews

Bidder	Cash Payment	Price / Acre	Rental	Oil	Gas	Other



P.O.B.
X=2,233,246.02
Y= 134,572.76

BLOCK 10



LA
USA

TR 33023
801.89 +/- ACS.
JAN., 2001

**SOUTH TIMBALIER AREA, REVISED
TERREBONNE PARISH**

