

**TRACT 33014 - PORTION OF BLOCK 1, SOUTH PELTO AREA, Terrebonne Parish, Louisiana**

That portion of Block 1, South Pelto Area, Terrebonne Parish, Louisiana, belonging to the State of Louisiana and not under mineral lease on January 10, 2001, described as follows: Beginning at a point on the North line of Block 1, South Pelto Area, being the Northeast corner of State Lease No. 15074 having Coordinates of X = 2,191,463.09 and Y = 128,484.76; thence East 10,582.93 feet on the North line of said Block 1 to its Northeast corner having Coordinates of X = 2,202,046.02 and Y = 128,484.76; thence South 944.37 feet on the East line of said Block 1 to a point having Coordinates of X = 2,202,046.02 and Y = 127,540.39; thence West 10,903.77 feet to a point on the East line of said State Lease No. 15074 having Coordinates of X = 2,191,142.25 and Y = 127,540.39; thence North 18 degrees 45 minutes 53 seconds East 997.38 feet on the said East line of said State Lease No. 15074 to the point of beginning, containing approximately 232.91 acres, as shown outlined in red on a plat on file in the Office of Mineral Resources, Department of Natural Resources. All bearings, distances and coordinates are based on Louisiana Coordinate System of 1927 (South Zone).

NOTE: The above tract is located in or near an oyster restricted area and all operations in such area must be conducted in strict conformity with the stipulations and/or regulations of the Louisiana Department of Wildlife and Fisheries.

NOTE: The State of Louisiana does hereby reserve, and this lease shall be subject to, the imprescriptible right of surface use in the nature of a servitude in favor of the Department of Natural Resources, including its Offices and Commissions, for the sole purpose of implementing, constructing, servicing and maintaining approved coastal zone management and/or restoration projects. Utilization of any and all rights derived under this lease by the mineral lessee, its agents, successors or assigns, shall not interfere with nor hinder the reasonable surface use by the Department of Natural Resources, its Offices or Commissions, as hereinabove reserved.

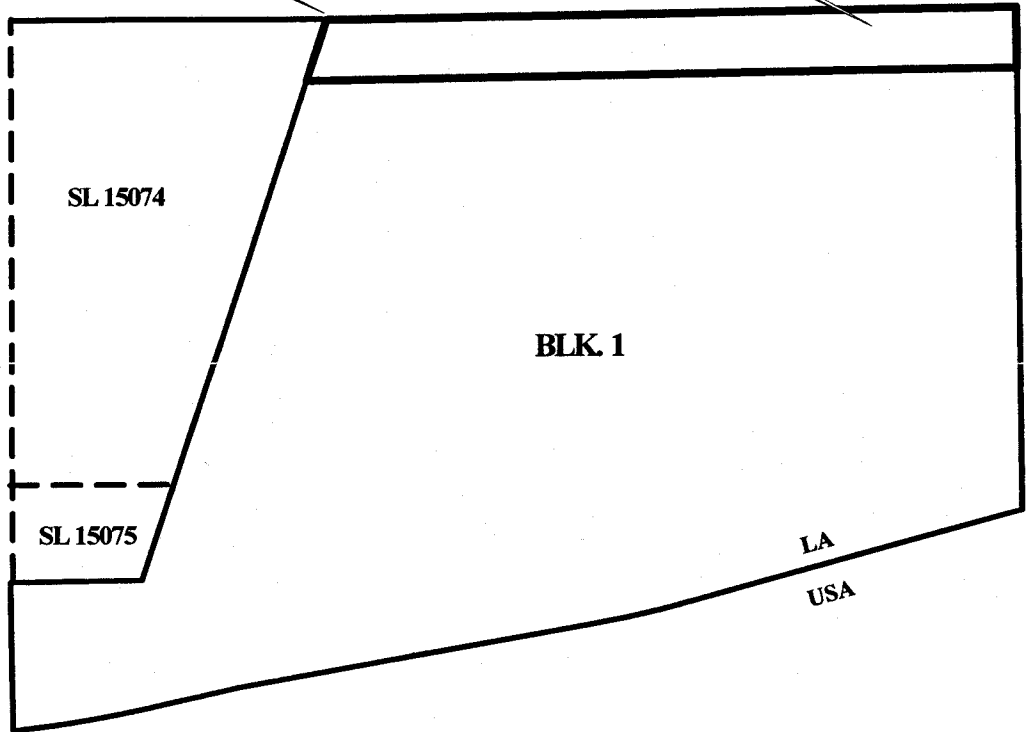
Applicant: D. Andrews

Bidder	Cash Payment	Price / Acre	Rental	Oil	Gas	Other



P.O.B.  
X= 2,191,463.09  
Y= 128,484.76

TR 33014  
232.91 ± ACS.  
JAN., 2001



SOUTH PELTO AREA  
TERREBONNE PARISH

3000 0 3000 Feet

67

**TRACT 33015 - PORTION OF BLOCK 1, SOUTH PELTO AREA, Terrebonne Parish, Louisiana**

That portion of Block 1, South Pelto Area, Terrebonne Parish, Louisiana, belonging to the State of Louisiana and not under mineral lease on January 10, 2001, described as follows: Beginning at a point on the East line of Block 1, South Pelto Area, having Coordinates of X = 2,202,046.02 and Y = 127,540.39; thence South 6,900.06 feet on the said East line of said Block 1 to a point having Coordinates of X = 2,202,046.02 and Y = 120,640.33; thence the following courses: Southwesterly on a straight line to a point having Coordinates of X = 2,196,975 and Y = 119,305; Southwesterly on an arc having a radius of 18,240.60 feet and a center at X = 2,192,330 and Y = 136,944 to a point having Coordinates of X = 2,195,302 and Y = 118,947; Southwesterly on a straight line to a point having Coordinates of X = 2,189,988 and Y = 118,070; Southwesterly on a straight line to a point having Coordinates of X = 2,188,596 and Y = 117,772 and Southwesterly on an arc having a radius of 18,240.60 feet and a center at X = 2,184,788 and Y = 135,611 to a point on the West line of said Block 1 having Coordinates of X = 2,186,519.25 and Y = 117,452.74; thence North 00 degrees 17 minutes 30 seconds West 2,332.16 feet on the said West line of said Block 1 to the Southwest corner of State Lease No. 15075 having Coordinates of X = 2,186,507.38 and Y = 119,784.87; thence on the boundary of said State Lease No. 15075 the following courses: East 2,000.00 feet and North 18 degrees 45 minutes 53 seconds East 1,799.10 feet to its Northeast corner, also being the Southeast corner of State Lease No. 15074 having Coordinates of X = 2,189,086.12 and Y = 121,488.34; thence North 18 degrees 45 minutes 53 seconds East 6,391.79 feet on the East line of said State Lease No. 15074 to a point having Coordinates of X = 2,191,142.25 and Y = 127,540.39; thence East 10,903.77 feet to the point of beginning, containing approximately **2,500.00 acres**, as shown outlined in red on a plat on file in the Office of Mineral Resources, Department of Natural Resources, **LESS AND EXCEPT** that portion thereof, if any, which is more than three nautical miles from the coast line as determined by the Report of the Special Master in the litigation in the Supreme Court of the United States styled United States v. State of Louisiana et al No. 9 Original, said three mile line as set out in the June, 1975, decree of the Supreme Court. All bearings, distances and coordinates are based on Louisiana Coordinate System of 1927 (South Zone).

NOTE: The above tract is located in or near an oyster restricted area and all operations in such area must be conducted in strict conformity with the stipulations and/or regulations of the Louisiana Department of Wildlife and Fisheries.

NOTE: The State of Louisiana does hereby reserve, and this lease shall be subject to, the imprescriptible right of surface use in the nature of a servitude in favor of the Department of Natural Resources, including its Offices and Commissions, for the sole purpose of implementing, constructing, servicing and maintaining approved coastal zone management and/or restoration projects. Utilization of any and all rights derived under this lease by the mineral lessee, its agents, successors or assigns, shall not interfere with nor hinder the reasonable surface use by the Department of Natural Resources, its Offices or Commissions, as hereinabove reserved.

Applicant: D. Andrews

Bidder	Cash Payment	Price / Acre	Rental	Oil	Gas	Other



P.O.B.  
X= 2,202,046.02  
Y= 127,540.39

BLOCK 1

S.L. 15074

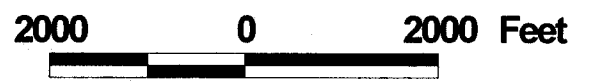
TR 33015  
2500.00 ± ACS.  
JAN., 2001

S.L. 15075

LA

USA

TERREBONNE PARISH  
SOUTH PELTO AREA



**TRACT 33016 - PORTION OF BLOCK 8, SOUTH TIMBALIER AREA, REVISED, Terrebonne Parish, Louisiana**

That portion of Block 8, South Timbalier Area, Revised, Terrebonne Parish, Louisiana, belonging to the State of Louisiana and not under mineral lease on January 10, 2001, described as follows: Beginning at a point on the West line of Block 8, South Timbalier Area, Revised, having Coordinates of X = 2,202,046.02 and Y = 136,768.09; thence North 2,915.24 feet along the West line of said Block 8 to its Northwest corner having Coordinates of X = 2,202,046.02 and Y = 139,683.33; thence Northeasterly on a straight line to a point having Coordinates of X = 2,207,126 and Y = 141,266; thence Northeasterly on a straight line to a point having Coordinates of X = 2,215,009 and Y = 143,380; thence Northeasterly on a straight line to the Northeast corner of said Block 8 having Coordinates of X = 2,217,646.02 and Y = 144,035.68; thence South 2,482.15 feet along the East line of said Block 8 to the Northeast corner of State Lease No. 16673 having Coordinates of X = 2,217,646.02 and Y = 141,553.53; thence along the boundary of said State Lease No. 16673 the following courses: South 64 degrees 31 minutes 18 seconds West 9,360.31 feet and South 758.91 feet to a point on the West line of said State Lease No. 16673 having Coordinates of X = 2,209,196.02 and Y = 136,768.09; thence West 7,150.00 feet to the point of beginning, containing approximately 1,319.88 acres, as shown outlined in red on a plat on file in the Office of Mineral Resources, Department of Natural Resources. All bearings, distances and coordinates are based on Louisiana Coordinate System of 1927 (South Zone).

NOTE: The above tract is located in or near an oyster restricted area and all operations in such area must be conducted in strict conformity with the stipulations and/or regulations of the Louisiana Department of Wildlife and Fisheries.

NOTE: The State of Louisiana does hereby reserve, and this lease shall be subject to, the imprescriptible right of surface use in the nature of a servitude in favor of the Department of Natural Resources, including its Offices and Commissions, for the sole purpose of implementing, constructing, servicing and maintaining approved coastal zone management and/or restoration projects. Utilization of any and all rights derived under this lease by the mineral lessee, its agents, successors or assigns, shall not interfere with nor hinder the reasonable surface use by the Department of Natural Resources, its Offices or Commissions, as hereinabove reserved.

Applicant: D. Andrews

Bidder	Cash Payment	Price / Acre	Rental	Oil	Gas	Other

TR 33016  
1,319.88 +/- ACS.  
JAN., 2001

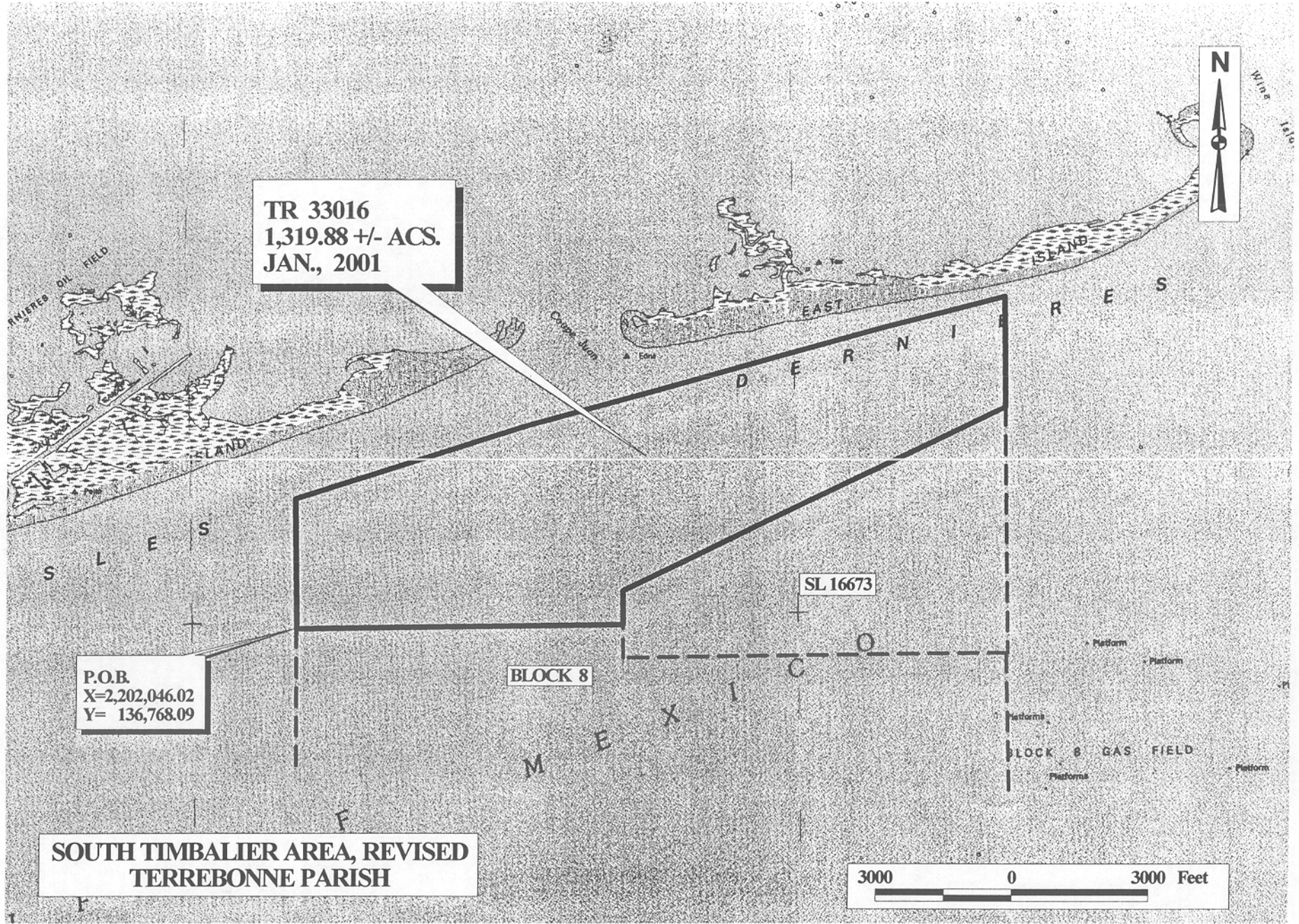
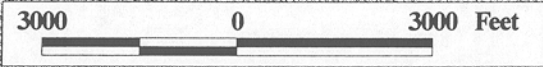
P.O.B.  
X=2,202,046.02  
Y= 136,768.09

SOUTH TIMBALIER AREA, REVISED  
TERREBONNE PARISH

SL 16673

BLOCK 8

BLOCK 8 GAS FIELD



**TRACT 33017 - PORTION OF BLOCK 8, SOUTH TIMBALIER AREA, REVISED, Terrebonne Parish, Louisiana**

That portion of Block 8, South Timbalier Area, Revised, Terrebonne Parish, Louisiana, belonging to the State of Louisiana and not under mineral lease on January 10, 2001, described as follows: Beginning at the Southwest corner of Block 8, South Timbalier Area, Revised, having Coordinates of X = 2,202,046.02 and Y = 127,591.99; thence North 9,176.10 feet along the West line of said Block 8 to a point having Coordinates of X = 2,202,046.02 and Y = 136,768.09; thence East 7,150.00 feet to a point on the West line of State Lease No. 16673 having Coordinates of X = 2,209,196.02 and Y = 136,768.09; thence South 740.96 feet to the Southwest corner of said State Lease No. 16673 having Coordinates of X = 2,209,196.02 and Y = 136,027.13, also being the Northwest corner of State Lease No. 14905; thence along the boundaries of said State Lease No. 14905 the following courses: South 6,698.52 feet and East 2,607.14 feet to its Southeast corner, also being the Southwest corner of State Lease No. 4237 having Coordinates of X = 2,211,803.16 and Y = 129,328.61; thence along the boundary of said State Lease No. 4237 the following courses: South 74 degrees 18 minutes 36 seconds East 1,695.83 feet and East 460.22 feet to the Northwest corner of State Lease No. 14431 having Coordinates of X = 2,213,896.02 and Y = 128,870.00; thence South 1,278.01 feet to the Southwest corner of said State Lease No. 14431 which lies on the South line of said Block 8 having Coordinates of X = 2,213,896.02 and Y = 127,591.99; thence West 11,850.00 feet along said South line of said Block 8 to the point of beginning, containing approximately 1,680.11 acres, as shown outlined in red on a plat on file in the Office of Mineral Resources, Department of Natural Resources. All bearings, distances and coordinates are based on Louisiana Coordinate System of 1927 (South Zone).

NOTE: The above tract is located in or near an oyster restricted area and all operations in such area must be conducted in strict conformity with the stipulations and/or regulations of the Louisiana Department of Wildlife and Fisheries.

NOTE: The State of Louisiana does hereby reserve, and this lease shall be subject to, the imprescriptible right of surface use in the nature of a servitude in favor of the Department of Natural Resources, including its Offices and Commissions, for the sole purpose of implementing, constructing, servicing and maintaining approved coastal zone management and/or restoration projects. Utilization of any and all rights derived under this lease by the mineral lessee, its agents, successors or assigns, shall not interfere with nor hinder the reasonable surface use by the Department of Natural Resources, its Offices or Commissions, as hereinabove reserved.

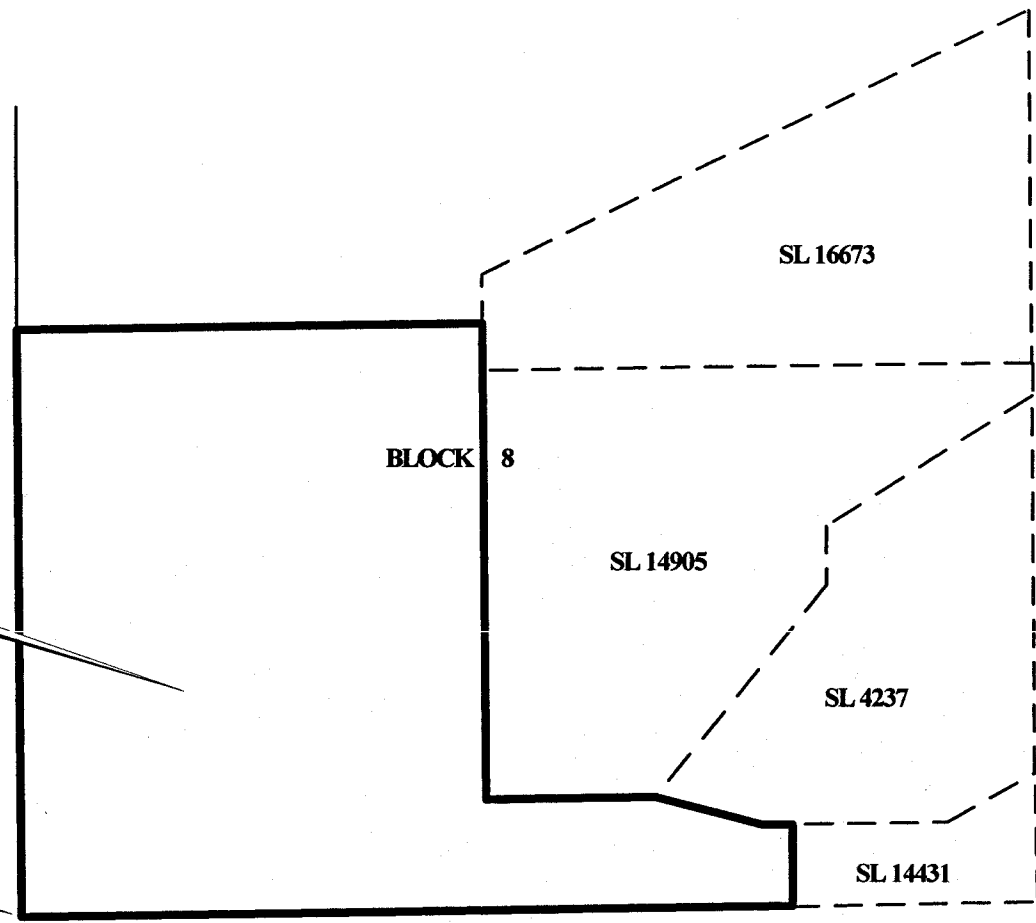
Applicant: D. Andrews



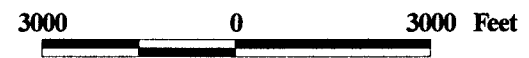
Bidder	Cash Payment	Price / Acre	Rental	Oil	Gas	Other

**TR 33017**  
**1,680.11 +/- ACS.**  
**JAN., 2001**

**P.O.B.**  
**X=2,202,046.02**  
**Y= 127,591.99**



**SOUTH TIMBALIER AREA, REVISED**  
**TERREBONNE PARISH**



**TRACT 33018 - PORTION OF BLOCK 2, SOUTH PELTO AREA, Terrebonne Parish, Louisiana**

That portion of Block 2, South Pelto Area, Terrebonne Parish, Louisiana, belonging to the State of Louisiana and not under mineral lease on January 10, 2001, described as follows: Beginning at a point within Block 2, South Pelto Area, having Coordinates of X = 2,209,846.02 and Y = 123,007.75; thence Southwesterly on a straight line to a point having Coordinates of X = 2,203,722 and Y = 121,100; thence Southwesterly along an arc to the right having a radius of 18,240.60 feet and a center at X = 2,198,296 and Y = 138,515; thence Southwesterly on a straight line to a point on the West line of said Block 2 having Coordinates of X = 2,202,046.02 and Y = 120,640.33; thence North 6,951.66 feet along the West line of said Block 2 to its Northwest corner having Coordinates of X = 2,202,046.02 and Y = 127,591.99; thence East 7,800.00 feet along the North line of said Block 2 to its Northeast corner having Coordinates of X = 2,209,846.02 and Y = 127,591.99; thence South 4,584.24 feet along the East line of said Block 2 to the point of beginning, containing approximately 1,037.46 acres, as shown outlined in red on a plat on file in the Office of Mineral Resources, Department of Natural Resources, **LESS AND EXCEPT** that portion thereof, if any, which is more than three nautical miles from the coast line as determined by the Report of the Special Master in the litigation in the Supreme Court of the United States styled United States v. State of Louisiana et al No. 9 Original, said three mile line as set out in the June, 1975, decree of the Supreme Court. All bearings, distances and coordinates are based on Louisiana Coordinate System of 1927 (South Zone).

NOTE: The above tract is located in or near an oyster restricted area and all operations in such area must be conducted in strict conformity with the stipulations and/or regulations of the Louisiana Department of Wildlife and Fisheries.

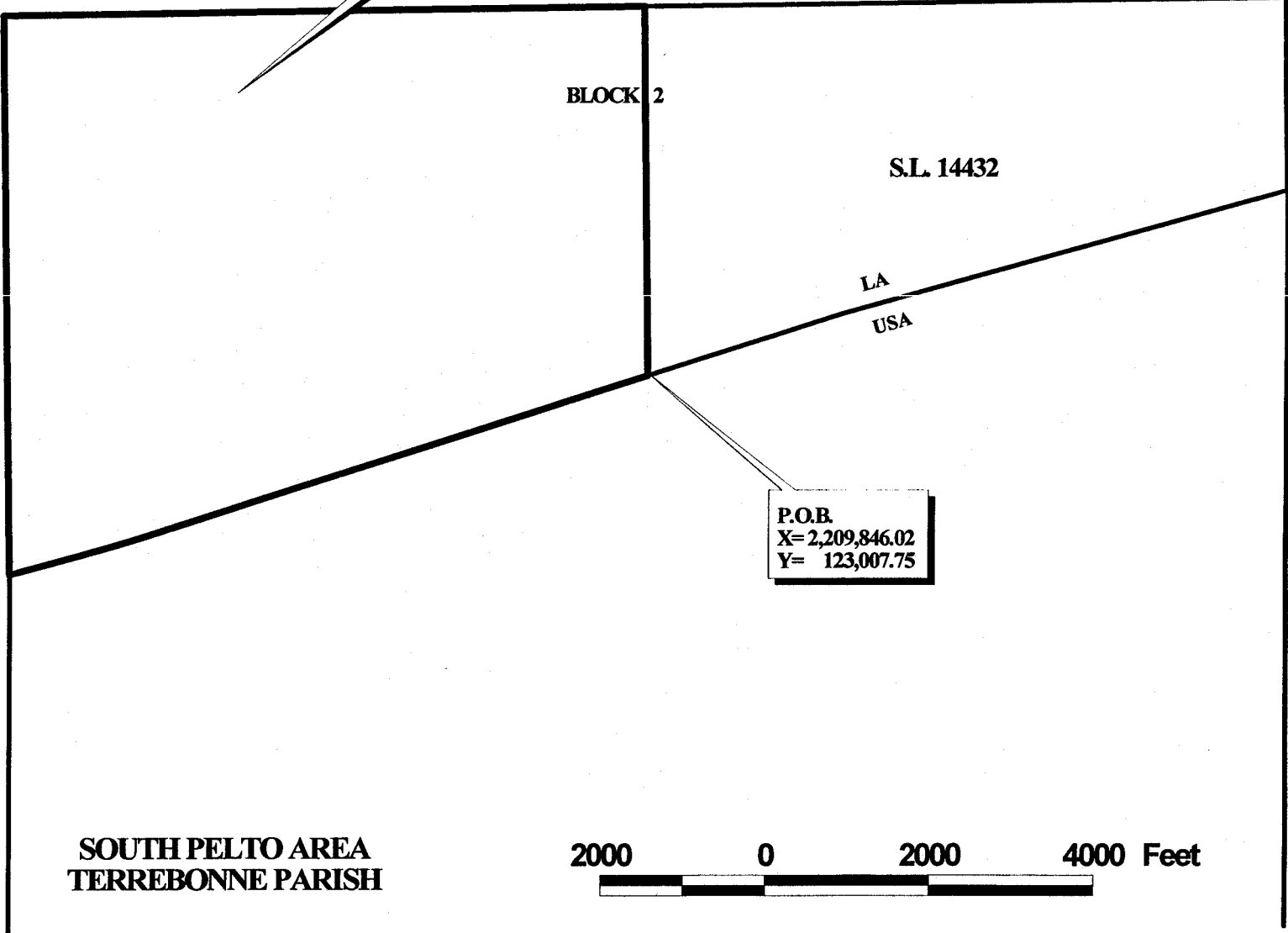
NOTE: The State of Louisiana does hereby reserve, and this lease shall be subject to, the imprescriptible right of surface use in the nature of a servitude in favor of the Department of Natural Resources, including its Offices and Commissions, for the sole purpose of implementing, constructing, servicing and maintaining approved coastal zone management and/or restoration projects. Utilization of any and all rights derived under this lease by the mineral lessee, its agents, successors or assigns, shall not interfere with nor hinder the reasonable surface use by the Department of Natural Resources, its Offices or Commissions, as hereinabove reserved.

Applicant: D. Andrews

Bidder	Cash Payment	Price / Acre	Rental	Oil	Gas	Other



**TR 33018**  
**1037.46 ± ACS.**  
**JAN., 2001**



2000 0 2000 4000 Feet

**SOUTH PELTO AREA**  
**TERREBONNE PARISH**