

TRACT 33007 - PORTION OF BLOCK 12, WEST CAMERON AREA, REVISED, Cameron Parish, Louisiana

That portion of Block 12, West Cameron Area, Revised, Cameron Parish, Louisiana, belonging to the State of Louisiana and not under mineral lease on January 10, 2001, described as follows: Beginning at the Northeast corner of Block 12, West Cameron Area, Revised, having Coordinates of X = 1,273,387.328 and Y = 402,202.63; thence Southwesterly on a straight line on the North line of said Block 12 to a point having Coordinates of X = 1,264,910 and Y = 401,500; thence South 7,709.76 feet to a point on the South line of said Block 12 having Coordinates of X = 1,264,910.00 and Y = 393,790.240; thence East 8,477.328 feet on the South line of said Block 12 to its Southeast corner having Coordinates of X = 1,273,387.328 and Y = 393,790.240; thence North 8,412.39 feet on the East line of said Block 12 to the point of beginning, containing approximately 1,568.79 acres, as shown outlined in red on a plat on file in the Office of Mineral Resources, Department of Natural Resources. All bearings, distances and coordinates are based on Louisiana Coordinate System of 1927 (South Zone).

NOTE: The State of Louisiana does hereby reserve, and this lease shall be subject to, the imprescriptible right of surface use in the nature of a servitude in favor of the Department of Natural Resources, including its Offices and Commissions, for the sole purpose of implementing, constructing, servicing and maintaining approved coastal zone management and/or restoration projects. Utilization of any and all rights derived under this lease by the mineral lessee, its agents, successors or assigns, shall not interfere with nor hinder the reasonable surface use by the Department of Natural Resources, its Offices or Commissions, as hereinabove reserved.

Applicant: Woodland Petroleum Corporation

Bidder	Cash Payment	Price / Acre	Rental	Oil	Gas	Other



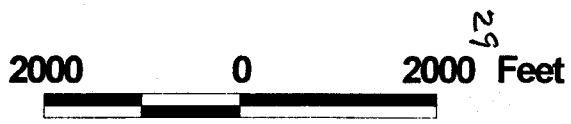
TR 33007
1568.79 ± ACS.
JAN., 2001

P.O.B.
X= 1,273,387.328
Y= 402,202.63

BLK 12

CAMERON PARISH
WEST CAMERON AREA., REV.

BLK 19



TRACT 33008 - PORTION OF BLOCK 11, WEST CAMERON AREA, REVISED, Cameron Parish, Louisiana

That portion of Block 11, West Cameron Area, Revised, Cameron Parish, Louisiana, belonging to the State of Louisiana and not under mineral lease on January 10, 2001, described as follows: Beginning at the Northeast corner of Block 11, West Cameron Area, Revised, having Coordinates of X = 1,288,145.376 and Y = 403,746.45; thence on the North line of said Block 11 the following courses: Southwesterly on a straight line to a point having Coordinates of X = 1,286,154 and Y = 403,467; Southwesterly on a straight line to a point having Coordinates of X = 1,280,760 and Y = 402,836; Southwesterly on a straight line to a point having Coordinates of X = 1,275,467 and Y = 402,375 and Southwesterly on a straight line to the Northwest corner of said Block 11 having Coordinates of X = 1,273,387.328 and Y = 402,202.63; thence South 1,033.63 feet on the West line of said Block 11 to a point having Coordinates of X = 1,273,387.328 and Y = 401,169.00; thence East 14,758.048 feet to a point on the East line of said Block 11 having Coordinates of X = 1,288,145.376 and Y = 401,169.00; thence North 2,577.45 feet on the East line of said Block 11 to the point of beginning, containing approximately **584.95 acres**, as shown outlined in red on a plat on file in the Office of Mineral Resources, Department of Natural Resources. All bearings, distances and coordinates are based on Louisiana Coordinate System of 1927 (South Zone).

NOTE: The State of Louisiana does hereby reserve, and this lease shall be subject to, the imprescriptible right of surface use in the nature of a servitude in favor of the Department of Natural Resources, including its Offices and Commissions, for the sole purpose of implementing, constructing, servicing and maintaining approved coastal zone management and/or restoration projects. Utilization of any and all rights derived under this lease by the mineral lessee, its agents, successors or assigns, shall not interfere with nor hinder the reasonable surface use by the Department of Natural Resources, its Offices or Commissions, as hereinabove reserved.

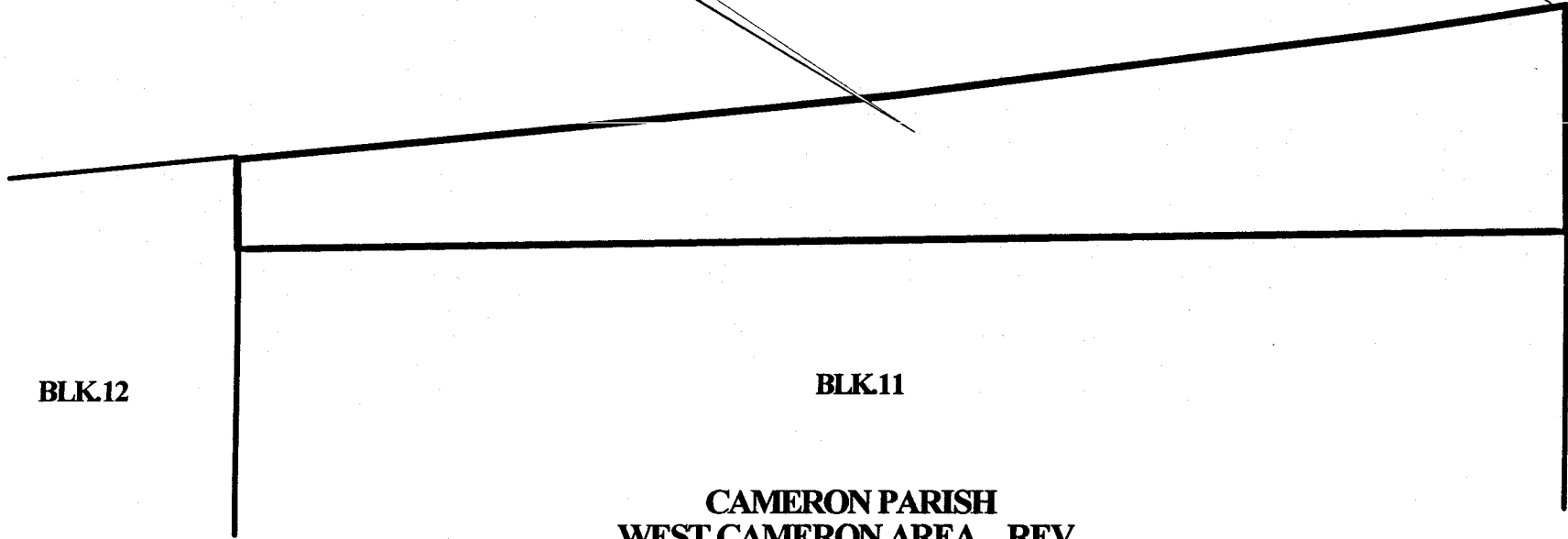
Applicant: Woodland Petroleum Corporation

Bidder	Cash Payment	Price / Acre	Rental	Oil	Gas	Other



TR 33008
584.95 ± ACS.
JAN., 2001

P.O.B.
X= 1,288,145.376
Y= 403,746.45



BLK.12

BLK.11

CAMERON PARISH
WEST CAMERON AREA., REV.



TRACT 33009 - PORTION OF BLOCK 11, WEST CAMERON AREA, REVISED, Cameron Parish, Louisiana

That portion of Block 11, West Cameron Area, Revised, Cameron Parish, Louisiana, belonging to the State of Louisiana and not under mineral lease on January 10, 2001, described as follows: Beginning at the Southeast corner of Block 11, West Cameron Area, Revised, having Coordinates of X = 1,288,145.376 and Y = 393,790.240; thence North 7,378.76 feet on the East line of said Block 11 to a point having Coordinates of X = 1,288,145.376 and Y = 401,169.00; thence West 14,758.048 feet to a point on the West line of said Block 11 having Coordinates of X = 1,273,387.328 and Y = 401,169.00; thence South 7,378.76 feet on the West line of said Block 11 to its Southwest corner having Coordinates of X = 1,273,387.328 and Y = 393,790.24; thence East 14,758.048 feet to the point of beginning, containing approximately **2,499.91 acres**, as shown outlined in red on a plat on file in the Office of Mineral Resources, Department of Natural Resources. All bearings, distances and coordinates are based on Louisiana Coordinate System of 1927 (South Zone).

NOTE: The State of Louisiana does hereby reserve, and this lease shall be subject to, the imprescriptible right of surface use in the nature of a servitude in favor of the Department of Natural Resources, including its Offices and Commissions, for the sole purpose of implementing, constructing, servicing and maintaining approved coastal zone management and/or restoration projects. Utilization of any and all rights derived under this lease by the mineral lessee, its agents, successors or assigns, shall not interfere with nor hinder the reasonable surface use by the Department of Natural Resources, its Offices or Commissions, as hereinabove reserved.

Applicant: Woodland Petroleum Corporation

Bidder	Cash Payment	Price / Acre	Rental	Oil	Gas	Other



TR 33009
2499.91 ± ACS.
JAN., 2001

BLK.12

BLK. 11

P.O.B.
X= 1,288,145.376
Y= 393,790.240

CAMERON PARISH
WEST CAMERON AREA., REV.

BLK.19

BLK.20



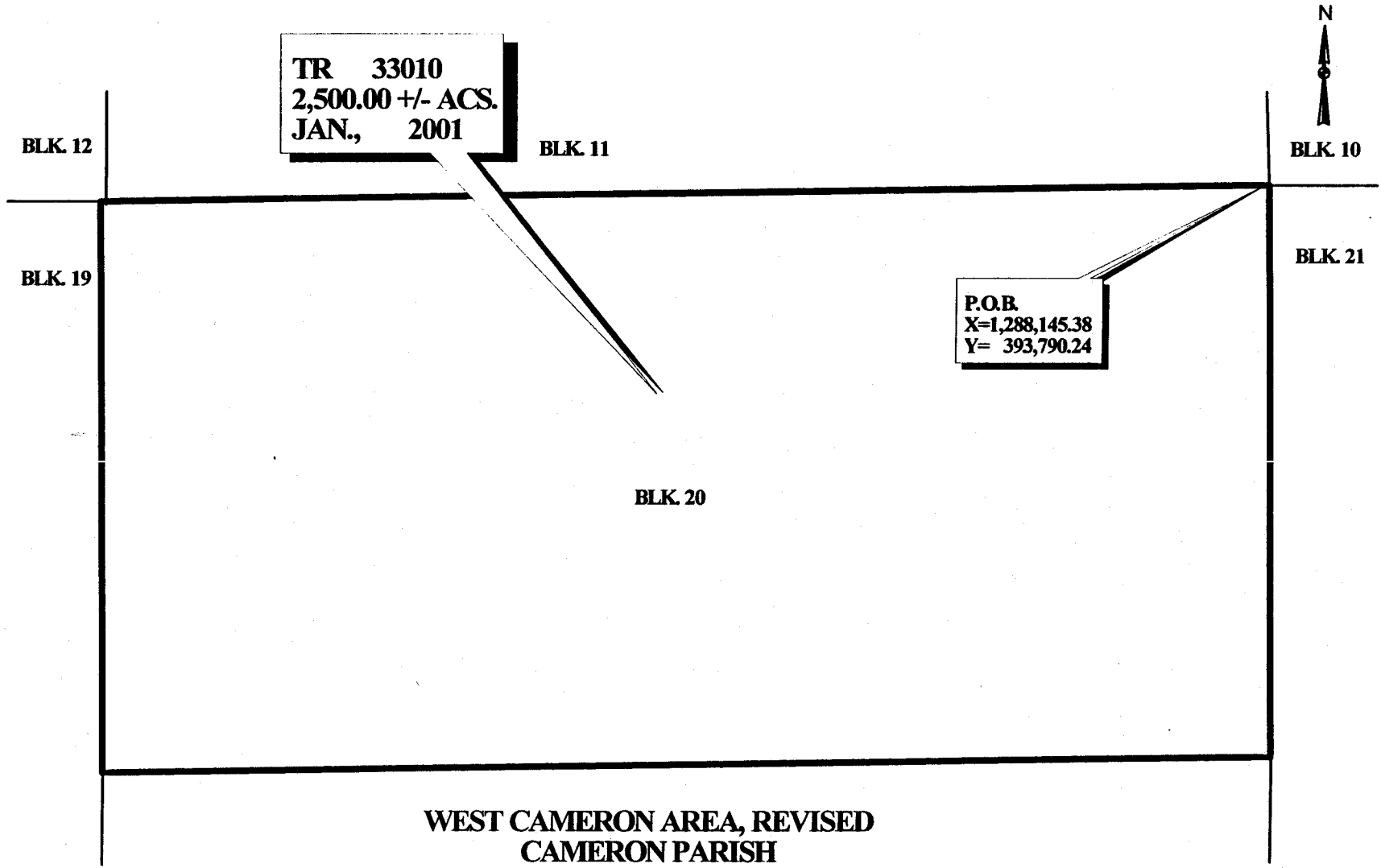
TRACT 33010 - PORTION OF BLOCK 20, WEST CAMERON AREA, REVISED, Cameron Parish, Louisiana

That portion of Block 20, West Cameron Area, Revised, Cameron Parish, Louisiana, belonging to the State of Louisiana and not under mineral lease on January 10, 2001, described as follows: Beginning at the Northeast corner of Block 20, West Cameron Area, Revised, having Coordinates of X = 1,288,145.38 and Y = 393,790.24; thence West 14,758.05 feet on the North line of said Block 20 to its Northwest corner having Coordinates of X = 1,273,387.33 and Y = 393,790.24; thence South 7,379.03 feet on the West line of said Block 20 to a point having Coordinates of X = 1,273,387.33 and Y = 386,411.22; thence East 14,758.05 feet to a point on the East line of said Block 20 having Coordinates of X = 1,288,145.38 and Y = 386,411.22; thence North 7,379.03 feet on the East line of said Block 20 to the point of beginning, containing approximately **2,500.00 acres**, as shown outlined in red on a plat on file in the Office of Mineral Resources, Department of Natural Resources. All bearings, distances and coordinates are based on Louisiana Coordinate System of 1927 (South Zone).

NOTE: The State of Louisiana does hereby reserve, and this lease shall be subject to, the imprescriptible right of surface use in the nature of a servitude in favor of the Department of Natural Resources, including its Offices and Commissions, for the sole purpose of implementing, constructing, servicing and maintaining approved coastal zone management and/or restoration projects. Utilization of any and all rights derived under this lease by the mineral lessee, its agents, successors or assigns, shall not interfere with nor hinder the reasonable surface use by the Department of Natural Resources, its Offices or Commissions, as hereinabove reserved.

Applicant: Woodland Petroleum Corporation

Bidder	Cash Payment	Price / Acre	Rental	Oil	Gas	Other



**TR 33010
2,500.00 +/- ACS.
JAN., 2001**



**P.O.B.
X=1,288,145.38
Y= 393,790.24**

**WEST CAMERON AREA, REVISED
CAMERON PARISH**



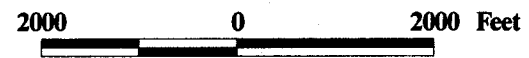
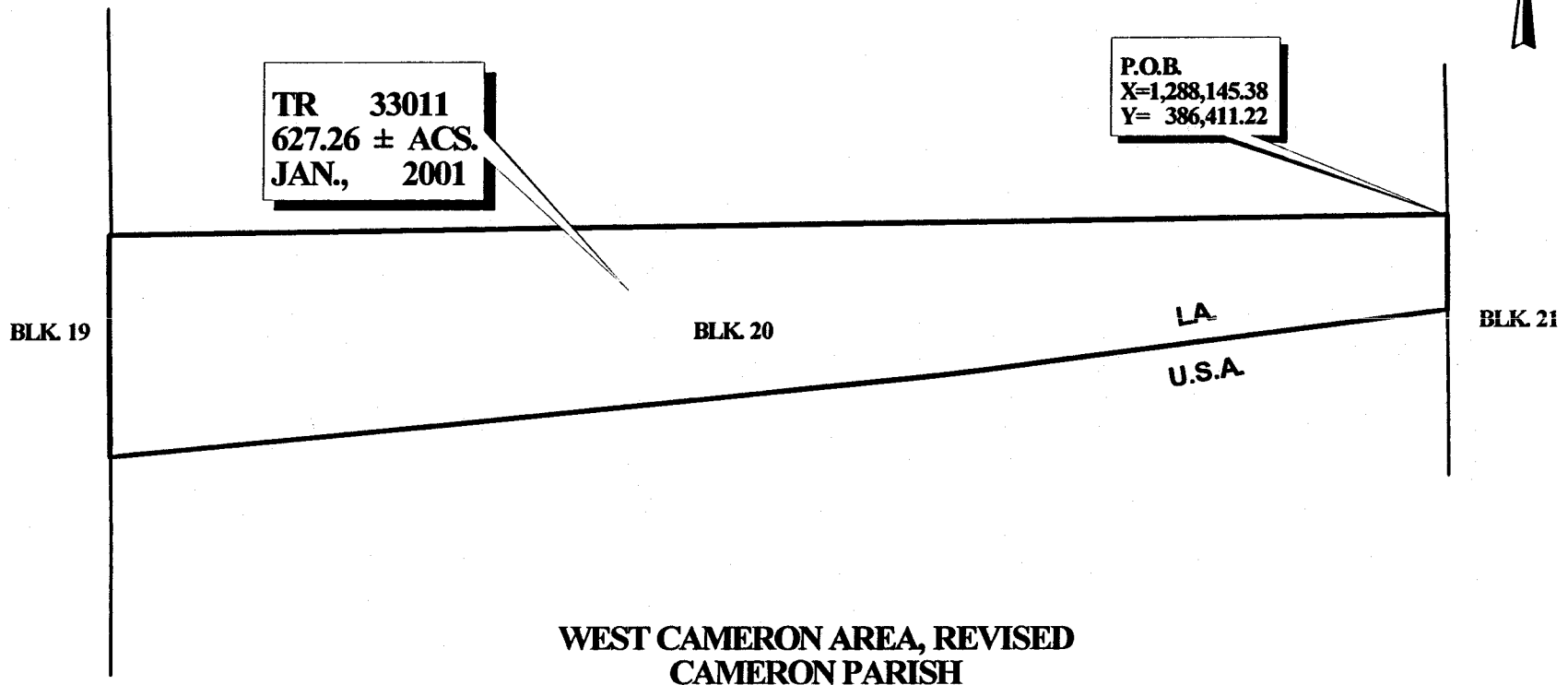
TRACT 33011 - PORTION OF BLOCK 20, WEST CAMERON AREA, REVISED, Cameron Parish, Louisiana

That portion of Block 20, West Cameron Area, Revised, Cameron Parish, Louisiana, belonging to the State of Louisiana and not under mineral lease on January 10, 2001, described as follows: Beginning at a point on the East line of Block 20, West Cameron Area, Revised, having Coordinates of X = 1,288,145.38 and Y = 386,411.22; thence West 14,758.05 feet to a point on the West line of said Block 20 having Coordinates of X = 1,273,387.33 and Y = 386,411.22; thence South 2,511.64 feet on the West line of said Block 20 to the intersection with the 1975 Supreme Court Decree 3 Mile Line having Coordinates of X = 1,273,387.33 and Y = 383,899.58; thence on the said 3 Mile Line the following courses: Northeasterly on a straight line to a point having Coordinates of X = 1,276,974 and Y = 384,197; Northeasterly on an arc having a radius of 18,240.60 feet and a center at X = 1,275,467 and Y = 402,375 to a point having Coordinates of X = 1,277,050 and Y = 384,203; Northeasterly on a straight line to a point having Coordinates of X = 1,282,343 and Y = 384,664; Northeasterly on an arc having a radius of 18,240.60 feet and a center at X = 1,280,760 and Y = 402,836 to a point having Coordinates of X = 1,282,879 and Y = 384,719 and Northeasterly on a straight line to its intersection with said East line of said Block 20 having Coordinates of X = 1,288,145.38 and Y = 385,335.07; thence North 1,076.15 feet on said East line of said Block 20 to the point of beginning, containing approximately **627.26 acres**, as shown outlined in red on a plat on file in the Office of Mineral Resources, Department of Natural Resources, **LESS AND EXCEPT** that portion thereof, if any, which is more than three nautical miles from the coast line as determined by the Report of the Special Master in the litigation in the Supreme Court of the United States styled United States v. State of Louisiana et al No. 9 Original, said three mile line as set out in the June, 1975, decree of the Supreme Court. All bearings, distances and coordinates are based on Louisiana Coordinate System of 1927 (South Zone).

NOTE: The State of Louisiana does hereby reserve, and this lease shall be subject to, the imprescriptible right of surface use in the nature of a servitude in favor of the Department of Natural Resources, including its Offices and Commissions, for the sole purpose of implementing, constructing, servicing and maintaining approved coastal zone management and/or restoration projects. Utilization of any and all rights derived under this lease by the mineral lessee, its agents, successors or assigns, shall not interfere with nor hinder the reasonable surface use by the Department of Natural Resources, its Offices or Commissions, as hereinabove reserved.

Applicant: Woodland Petroleum Corporation

Bidder	Cash Payment	Price / Acre	Rental	Oil	Gas	Other



TRACT 33012 - PORTION OF BLOCK 7, SOUTH TIMBALIER AREA, REVISED, Terrebonne Parish, Louisiana

That portion of Block 7, South Timbalier Area, Revised, Terrebonne Parish, Louisiana, belonging to the State of Louisiana and not under mineral lease on January 10, 2001, described as follows: Beginning at the Northeast corner of Block 7, South Timbalier Area, Revised, having Coordinates of X = 2,202,046.02 and Y = 139,683.33; thence South 3,833.74 feet on the East line of said Block 7 to a point having Coordinates of X = 2,202,046.02 and Y = 135,849.59; thence West 15,620.42 feet to a point on the West line of said Block 7 having Coordinates of X = 2,186,425.60 and Y = 135,849.59; thence North 00 degrees 17 minutes 30 seconds West 110.91 feet on the West line of said Block 7 to its Northwest corner having Coordinates of X = 2,186,425.03 and Y = 135,960.50; thence on the Northern boundary of said Block 7 the following courses: Northeasterly on a straight line to a point having Coordinates of X = 2,186,596 and Y = 135,997, Northeasterly on a straight line to a point having Coordinates of X = 2,192,330 and Y = 136,944, Northeasterly on a straight line to a point having Coordinates of X = 2,198,296 and Y = 138,515 and Northeasterly on a straight line to the point of beginning, containing approximately **619.46 acres**, as shown outlined in red on a plat on file in the Office of Mineral Resources, Department of Natural Resources. All bearings, distances and coordinates are based on Louisiana Coordinate System of 1927 (South Zone).

NOTE: The above tract is located in or near an oyster restricted area and all operations in such area must be conducted in strict conformity with the stipulations and/or regulations of the Louisiana Department of Wildlife and Fisheries.

NOTE: The State of Louisiana does hereby reserve, and this lease shall be subject to, the imprescriptible right of surface use in the nature of a servitude in favor of the Department of Natural Resources, including its Offices and Commissions, for the sole purpose of implementing, constructing, servicing and maintaining approved coastal zone management and/or restoration projects. Utilization of any and all rights derived under this lease by the mineral lessee, its agents, successors or assigns, shall not interfere with nor hinder the reasonable surface use by the Department of Natural Resources, its Offices or Commissions, as hereinabove reserved.

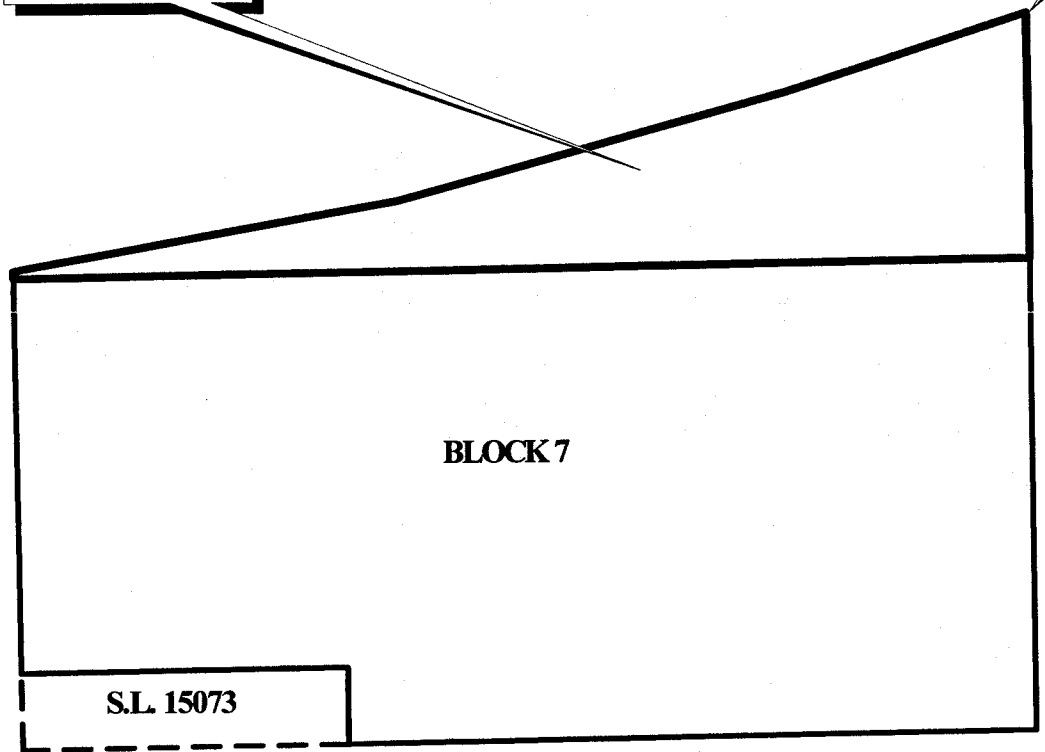
Applicant: D. Andrews

Bidder	Cash Payment	Price / Acre	Rental	Oil	Gas	Other



TR 33012
619.46 ± ACS.
JAN., 2001

P.O.B.
X= 2,202,046.02
Y= 139,683.33



S.L. 15073

TERREBONNE PARISH
SOUTH TIMBALIER AREA, REVISED



07

TRACT 33013 - PORTION OF BLOCK 7, SOUTH TIMBALIER AREA, REVISED, Terrebonne Parish, Louisiana

That portion of Block 7, South Timbalier Area, Revised, Terrebonne Parish, Louisiana, belonging to the State of Louisiana and not under mineral lease on January 10, 2001, described as follows: Beginning at the Southeast corner of Block 7, South Timbalier Area, Revised, having Coordinates of X = 2,202,046.02 and Y = 128,484.76; thence West 10,582.93 feet on the South line of said Block 7 to the Southeast corner of State Lease No. 15073 having Coordinates of X = 2,191,463.09 and Y = 128,484.76; thence on the boundary of said State Lease No. 15073 the following courses: North 1,200.00 feet and West 5,006.11 feet to its Northwest corner on the West line of said Block 7 having Coordinates of X = 2,186,456.98 and Y = 129,684.76; thence North 00 degrees 17 minutes 30 seconds West 6,164.91 feet on the West line of said Block 7 to a point having Coordinates of X = 2,186,425.60 and Y = 135,849.59; thence East 15,620.42 feet to a point on the East line of said Block 7 having Coordinates of X = 2,202,046.02 and Y = 135,849.59; thence South 7,364.83 feet on the East line of said Block 7 to the point of beginning, containing approximately 2,500.00 acres, as shown outlined in red on a plat on file in the Office of Mineral Resources, Department of Natural Resources. All bearings, distances and coordinates are based on Louisiana Coordinate System of 1927 (South Zone).

NOTE: The above tract is located in or near an oyster restricted area and all operations in such area must be conducted in strict conformity with the stipulations and/or regulations of the Louisiana Department of Wildlife and Fisheries.

NOTE: The State of Louisiana does hereby reserve, and this lease shall be subject to, the imprescriptible right of surface use in the nature of a servitude in favor of the Department of Natural Resources, including its Offices and Commissions, for the sole purpose of implementing, constructing, servicing and maintaining approved coastal zone management and/or restoration projects. Utilization of any and all rights derived under this lease by the mineral lessee, its agents, successors or assigns, shall not interfere with nor hinder the reasonable surface use by the Department of Natural Resources, its Offices or Commissions, as hereinabove reserved.

Applicant: D. Andrews

Bidder	Cash Payment	Price / Acre	Rental	Oil	Gas	Other



TR 33013
2500.00 ± ACS.
JAN., 2001

BLOCK 7

S.L. 15073

P.O.B.
X= 2,202,046.02
Y= 128,484.76

TERREBONNE PARISH
SOUTH TIMBALIER AREA, REV.

