

TRACT 33037 - Cameron Parish, Louisiana

All lands, water bottoms and minerals, except tax lands, owned by and not under mineral lease from the State of Louisiana on January 10, 2001, situated in Cameron Parish, Louisiana, within the following described boundaries: Beginning at a point having Coordinates of X = 1,273,387.33 and Y = 402,202.63; thence North 85 degrees 15 minutes 43 seconds East 2,086.80 feet to a point having Coordinates of X = 1,275,467.00 and Y = 402,375.00; thence North 85 degrees 01 minutes 20 seconds East 5,313.04 feet to a point having Coordinates of X = 1,280,760.00 and Y = 402,836.00; thence North 83 degrees 19 minutes 40 seconds East 5,430.78 feet to a point having Coordinates of X = 1,286,154.00 and Y = 403,467.00; thence North 82 degrees 00 minutes 43 seconds East 2,010.89 feet to a point having Coordinates of X = 1,288,145.38 and Y = 403,746.45; thence North 00 degrees 00 minutes 00 seconds East 509.64 feet to a point having Coordinates of X = 1,288,145.38 and Y = 404,256.09; thence South 80 degrees 17 minutes 32 seconds West 1,371.59 feet to a point having Coordinates of X = 1,286,793.43 and Y = 404,024.81; thence South 82 degrees 30 minutes 48 seconds West 1,237.51 feet to a point having Coordinates of X = 1,285,566.47 and Y = 403,863.57; thence South 81 degrees 20 minutes 01 seconds West 1,626.54 feet to a point having Coordinates of X = 1,283,958.50 and Y = 403,618.48; thence South 83 degrees 30 minutes 35 seconds West 1,727.39 feet to a point having Coordinates of X = 1,282,242.18 and Y = 403,423.22; thence South 82 degrees 39 minutes 24 seconds West 1,614.76 feet to a point having Coordinates of X = 1,280,640.66 and Y = 403,216.83; thence South 82 degrees 03 minutes 38 seconds West 1,447.49 feet to a point having Coordinates of X = 1,279,207.05 and Y = 403,016.89; thence South 83 degrees 49 minutes 14 seconds West 913.92 feet to a point having Coordinates of X = 1,278,298.44 and Y = 402,918.52; thence South 82 degrees 03 minutes 59 seconds West 1,401.83 feet to a point having Coordinates of X = 1,276,910.02 and Y = 402,725.03; thence South 84 degrees 28 minutes 46 seconds West 1,206.73 feet to a point having Coordinates of X = 1,275,708.89 and Y = 402,608.94; thence South 83 degrees 44 minutes 12 seconds West 1,182.36 feet to a point having Coordinates of X = 1,274,533.59 and Y = 402,479.94; thence South 84 degrees 12 minutes 16 seconds West 1,152.15 feet to a point having Coordinates of X = 1,273,387.33 and Y = 402,363.60; thence South 00 degrees 00 minutes 00 seconds West 160.97 feet to the point of beginning, containing approximately **117.83 acres**, as shown outlined in red on a plat on file in the Office of Mineral Resources, Department of Natural Resources, as provided by the applicant. All bearings, distances and coordinates are based on Louisiana Coordinate System of 1927 (South Zone).

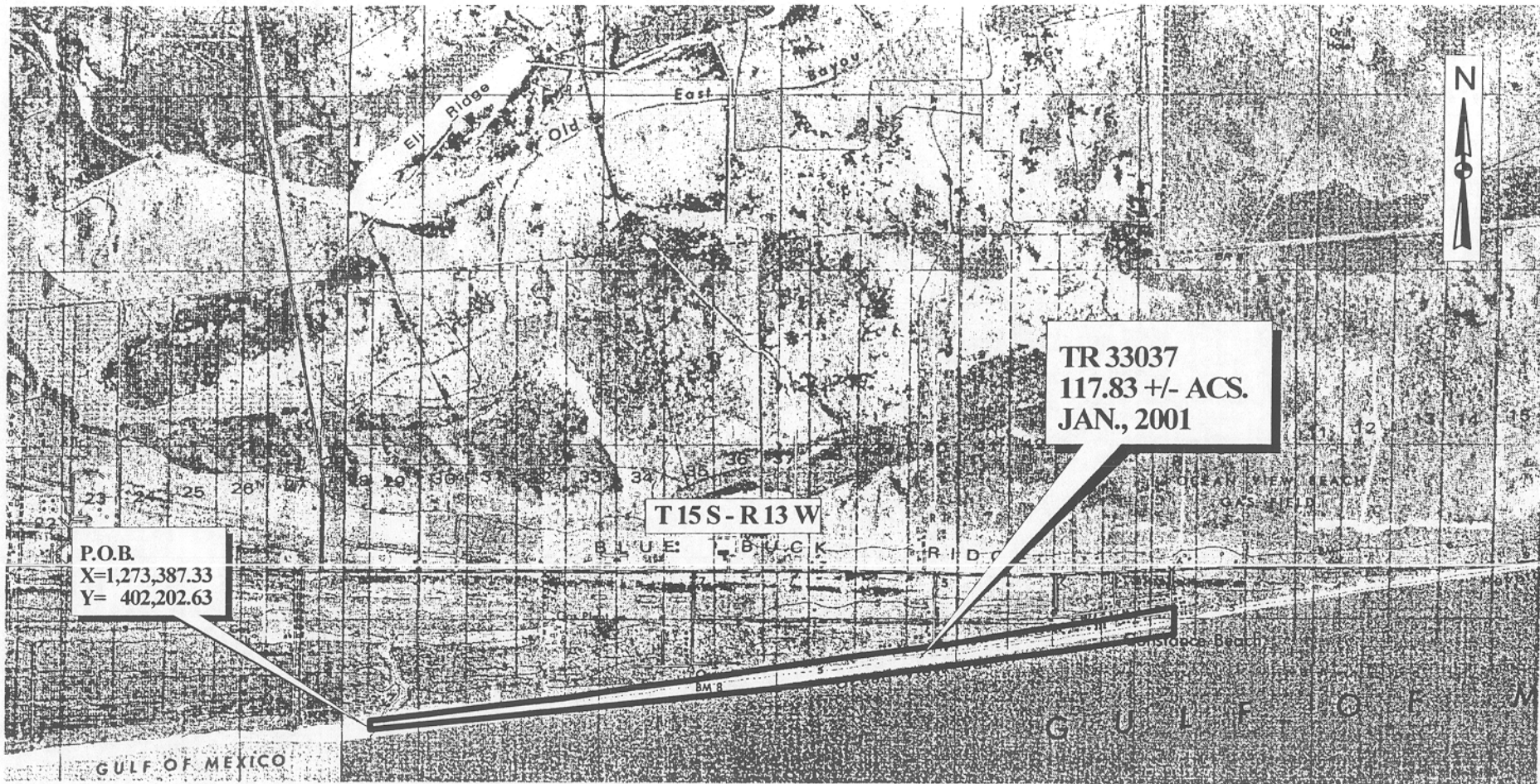
NOTE: The boundary description and plat for this tract as shown and as advertised were supplied by the nominating party and have not been checked for accuracy by the staff of the Office of Mineral Resources. Anything which may affect the acreage, the shape or the location of the tract, such as non-closure of or incorrect X, Y coordinates or title disputed acreage, or which may affect the status of the tract for leasing, such as overlap of prior leases or nominated tracts, or which may affect potential operations on leases taken, such as inclusion in areas under the jurisdiction of the Department of Wildlife and Fisheries, will not be specifically determined unless and until a bid on this tract is accepted by the Mineral Board; which bid will be accepted on a per acre basis and which acceptance will be conditional upon such specific determinations being made. Once

a bid is conditionally accepted by the Mineral Board, the staff will, within a period following the date of the lease sale, determine the acreage, shape and location of the potential lease area of the tract, the status for leasing of all or any portion thereof, and any conditions which may affect potential operations thereon. These determinations may render all or a portion of the bid area unleaseable or may increase or decrease the State claimed acreage such that the total bonus/rental ultimately required may either exceed the bonus/rental paid at the lease sale, which will require additional payment by the successful bidder, or allow the successful bidder a refund of excessive payment. The successful bidder will be notified of the determinations by the staff and given an opportunity to view the bid area acreage, configuration and location as it has been specifically determined. If all or a portion of the bid area is unleaseable due to overlap of an existing lease, the successful bidder will be given an opportunity to accept or reject a new lease on that portion of the bid area which is not unleaseable. If rejected, the bid and all monies accompanying the bid will be returned to the successful bidder and no lease will be issued. In all other cases a new lease will be issued and any additional per acre bonus/rental, 10% administration fee or \$10 and \$5 per acre fees due as a result of staff determination of more State acreage in the bid area than determined by the successful bidder will be paid prior to the lease being issued. A determination of less State acreage in the bid area will result in a return to the successful bidder of any overpayment.

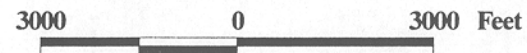
NOTE: The State of Louisiana does hereby reserve, and this lease shall be subject to, the imprescriptible right of surface use in the nature of a servitude in favor of the Department of Natural Resources, including its Offices and Commissions, for the sole purpose of implementing, constructing, servicing and maintaining approved coastal zone management and/or restoration projects. Utilization of any and all rights derived under this lease by the mineral lessee, its agents, successors or assigns, shall not interfere with nor hinder the reasonable surface use by the Department of Natural Resources, its Offices or Commissions, as hereinabove reserved.

Applicant: Angelle & Donohue Oil & Gas Properties, Inc.

Bidder	Cash Payment	Price / Acre	Rental	Oil	Gas	Other



WEST CAMERON PARISH, REVISED
CAMERON PARISH



107

TRACT 33038 - Cameron Parish, Louisiana

All lands, water bottoms and minerals, except tax lands, owned by and not under mineral lease from the State of Louisiana on January 10, 2001, situated in Cameron Parish, Louisiana, within the following described boundaries: Beginning at the a point having Coordinates of X = 1,302,903.42 and Y = 405,754.67; thence North 00 degrees 00 minutes 00 seconds East 286.62 feet to a point having Coordinates of X = 1,302,903.42 and Y = 406,041.29; thence South 86 degrees 19 minutes 37 seconds West 985.68 feet to a point having Coordinates of X = 1,301,919.76 and Y = 405,978.14; thence South 84 degrees 10 minutes 23 seconds West 1,131.55 feet to a point having Coordinates of X = 1,300,794.06 and Y = 405,863.26; thence South 83 degrees 05 minutes 19 seconds West 1,810.74 feet to a point having Coordinates of X = 1,298,996.48 and Y = 405,645.37; thence South 83 degrees 05 minutes 32 seconds West 1,760.14 feet to a point having Coordinates of X = 1,297,249.11 and Y = 405,433.67; thence South 80 degrees 51 minutes 56 seconds West 2,087.50 feet to a point having Coordinates of X = 1,295,188.08 and Y = 405,102.28; thence South 82 degrees 54 minutes 45 seconds West 1,847.62 feet to a point having Coordinates of X = 1,293,354.58 and Y = 404,874.31; thence North 89 degrees 44 minutes 32 seconds West 1,147.69 feet to a point having Coordinates of X = 1,292,206.90 and Y = 404,879.47; thence South 81 degrees 49 minutes 09 seconds West 1,378.84 feet to a point having Coordinates of X = 1,290,842.13 and Y = 404,683.27; thence South 84 degrees 28 minutes 57 seconds West 762.00 feet to a point having Coordinates of X = 1,290,083.63 and Y = 404,610.00; thence South 79 degrees 27 minutes 54 seconds West 1,524.93 feet to a point having Coordinates of X = 1,288,584.44 and Y = 404,331.19; thence South 80 degrees 17 minutes 33 seconds West 445.40 feet to a point having Coordinates of X = 1,288,145.38 and Y = 404,256.09; thence South 00 degrees 00 minutes 00 seconds West 509.64 feet to a point having Coordinates of X = 1,288,145.38 and Y = 403,746.45; thence North 82 degrees 00 minutes 42 seconds East 3,299.64 feet to a point having Coordinates of X = 1,291,413.00 and Y = 404,205.00; thence North 81 degrees 00 minutes 31 seconds East 5,400.42 feet to a point having Coordinates of X = 1,296,747.06 and Y = 405,049.00; thence North 83 degrees 27 minutes 40 seconds East 6,196.67 feet to the point of beginning, containing approximately **135.68 acres**, as shown outlined in red on a plat on file in the Office of Mineral Resources, Department of Natural Resources, as provided by the applicant. All bearings, distances and coordinates are based on Louisiana Coordinate System of 1927 (South Zone).

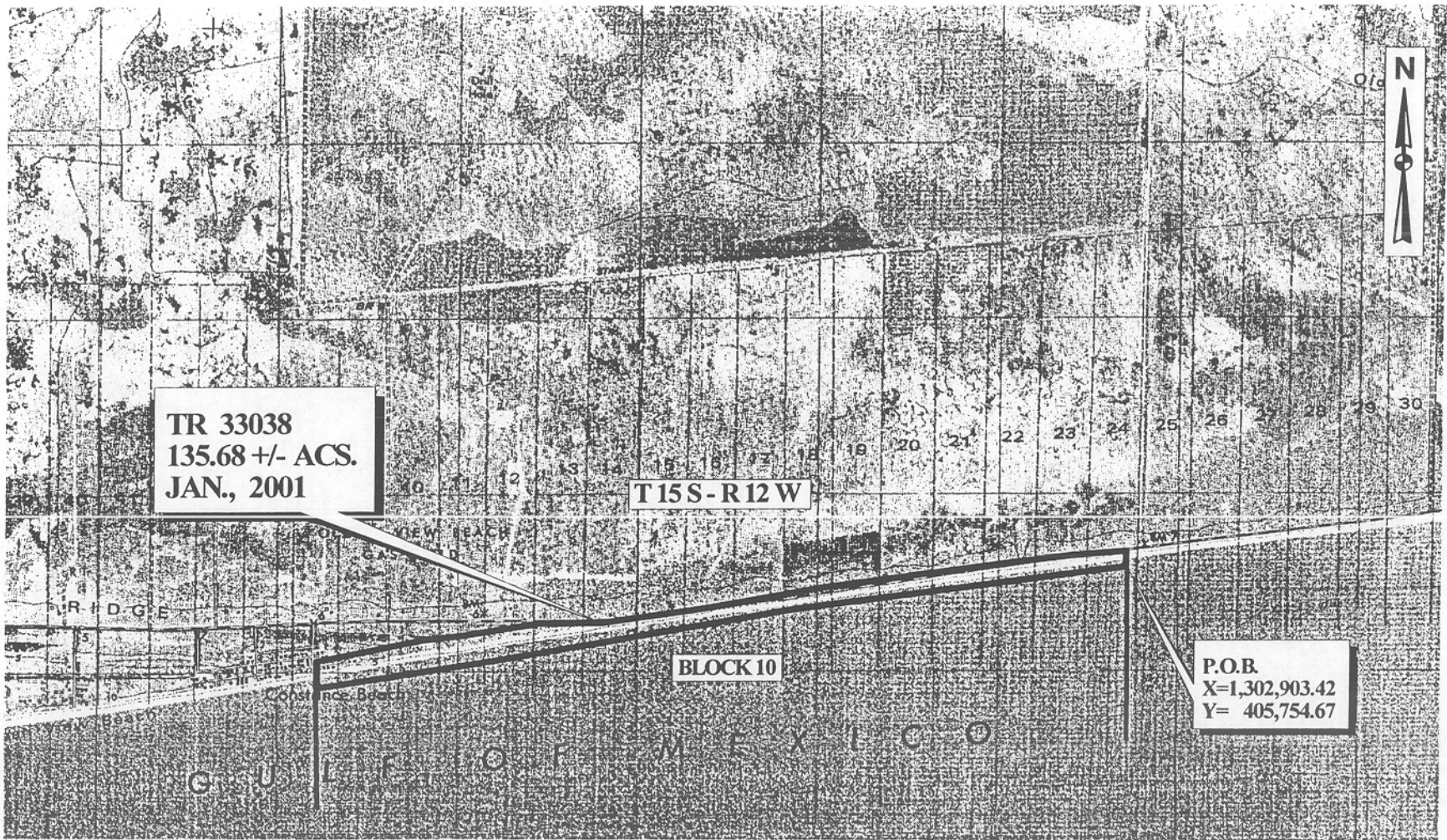
NOTE: The boundary description and plat for this tract as shown and as advertised were supplied by the nominating party and have not been checked for accuracy by the staff of the Office of Mineral Resources. Anything which may affect the acreage, the shape or the location of the tract, such as non-closure of or incorrect X, Y coordinates or title disputed acreage, or which may affect the status of the tract for leasing, such as overlap of prior leases or nominated tracts, or which may affect potential operations on leases taken, such as inclusion in areas under the jurisdiction of the Department of Wildlife and Fisheries, will not be specifically determined unless and until a bid on this tract is accepted by the Mineral Board; which bid will be accepted on a per acre basis and which acceptance will be conditional upon such specific determinations being made. Once a bid is conditionally accepted by the Mineral Board, the staff will, within a period following the date of the lease sale, determine the

acreage, shape and location of the potential lease area of the tract, the status for leasing of all or any portion thereof, and any conditions which may affect potential operations thereon. These determinations may render all or a portion of the bid area unleaseable or may increase or decrease the State claimed acreage such that the total bonus/rental ultimately required may either exceed the bonus/rental paid at the lease sale, which will require additional payment by the successful bidder, or allow the successful bidder a refund of excessive payment. The successful bidder will be notified of the determinations by the staff and given an opportunity to view the bid area acreage, configuration and location as it has been specifically determined. If all or a portion of the bid area is unleaseable due to overlap of an existing lease, the successful bidder will be given an opportunity to accept or reject a new lease on that portion of the bid area which is not unleaseable. If rejected, the bid and all monies accompanying the bid will be returned to the successful bidder and no lease will be issued. In all other cases a new lease will be issued and any additional per acre bonus/rental, 10% administration fee or \$10 and \$5 per acre fees due as a result of staff determination of more State acreage in the bid area than determined by the successful bidder will be paid prior to the lease being issued. A determination of less State acreage in the bid area will result in a return to the successful bidder of any overpayment.

NOTE: The State of Louisiana does hereby reserve, and this lease shall be subject to, the imprescriptible right of surface use in the nature of a servitude in favor of the Department of Natural Resources, including its Offices and Commissions, for the sole purpose of implementing, constructing, servicing and maintaining approved coastal zone management and/or restoration projects. Utilization of any and all rights derived under this lease by the mineral lessee, its agents, successors or assigns, shall not interfere with nor hinder the reasonable surface use by the Department of Natural Resources, its Offices or Commissions, as hereinabove reserved.

Applicant: Angelle & Donohue Oil & Gas Properties, Inc.

Bidder	Cash Payment	Price / Acre	Rental	Oil	Gas	Other



**WEST CAMERON AREA, REVISED
CAMERON PARISH**

3000 0 3000 Feet