

TRACT 33097 - PORTION OF BLOCK 52, MAIN PASS AREA, REVISED, Plaquemines Parish, Louisiana

All of the lands now or formerly constituting the beds and bottoms of all water bodies of every nature and description and all islands and other lands formed by accretion or reliction, except tax lands, belonging to the State of Louisiana and not under mineral lease on January 10, 2001, situated in Plaquemines Parish, Louisiana, and more particularly described as follows: Beginning at the northeast corner of Block 52, Main Pass Area, Revised, having coordinates of X = 2,664,850.00 and Y = 266,080.00, said point also being on an eastern boundary of State of Louisiana - State Lease No. 16666; thence on and along said Eastern boundary of State of Louisiana - State Lease No. 16666 the following courses and distances, to-wit: South 51 degrees 14 minutes 39 seconds West 1,632.42 feet to a point having Coordinates of X = 2,663,577.00 and Y = 265,058.10; and South 19 degrees 56 minutes 32 seconds West 2,007.38 feet to a point having coordinates of X = 2,662,892.34 and Y = 263,171.09, said point also being on a Northern boundary of State of Louisiana - State Lease No. 16849; thence West 441.33 feet on and along said Northern boundary of State of Louisiana - State Lease No. 16849 to a point having Coordinates of X = 2,662,451.01 and Y = 263,171.09, said point also being on an Eastern boundary of State of Louisiana - State Lease No. 16664; thence North 03 degrees 23 minutes 02 seconds West 2,913.98 feet on and along said Eastern boundary of said State of Louisiana - State Lease No. 16664 to a point having Coordinates of X = 2,662,279.00 and Y = 266,080.00, said point also being on the North line of said of Block 52, Main Pass Area, Revised; thence East 2,571.00 on and along said North line of said of Block 52, Main Pass Area, Revised, to the point of beginning, containing approximately **81.04 acres**, as shown outlined in red on a plat on file in the Office of Mineral Resources, Department of Natural Resources, as provided by the applicant. All bearings, distances and coordinates are based on Louisiana Coordinate System of 1927 (South Zone).

NOTE: The boundary description and plat for this tract as shown and as advertised were supplied by the nominating party and have not been checked for accuracy by the staff of the Office of Mineral Resources. Anything which may affect the acreage, the shape or the location of the tract, such as non-closure of or incorrect X, Y coordinates or title disputed acreage, or which may affect the status of the tract for leasing, such as overlap of prior leases or nominated tracts, or which may affect potential operations on leases taken, such as inclusion in areas under the jurisdiction of the Department of Wildlife and Fisheries, will not be specifically determined unless and until a bid on this tract is accepted by the Mineral Board; which bid will be accepted on a per acre basis and which acceptance will be conditional upon such specific determinations being made. Once a bid is conditionally accepted by the Mineral Board, the staff will, within a period following the date of the lease sale, determine the acreage, shape and location of the potential lease area of the tract, the status for leasing of all or any portion thereof, and any conditions which may affect potential operations thereon. These determinations may render all or a portion of the bid area unleaseable or may increase or decrease the State claimed acreage such that the total bonus/rental ultimately required may either exceed the bonus/rental paid at the lease sale, which will require additional

payment by the successful bidder, or allow the successful bidder a refund of excessive payment. The successful bidder will be notified of the determinations by the staff and given an opportunity to view the bid area acreage, configuration and location as it has been specifically determined. If all or a portion of the bid area is unleaseable due to overlap of an existing lease, the successful bidder will be given an opportunity to accept or reject a new lease on that portion of the bid area which is not unleaseable. If rejected, the bid and all monies accompanying the bid will be returned to the successful bidder and no lease will be issued. In all other cases a new lease will be issued and any additional per acre bonus/rental, 10% administration fee or \$10 and \$5 per acre fees due as a result of staff determination of more State acreage in the bid area than determined by the successful bidder will be paid prior to the lease being issued. A determination of less State acreage in the bid area will result in a return to the successful bidder of any overpayment.

NOTE: The above tract is located in or near an oyster restricted area and all operations in such area must be conducted in strict conformity with the stipulations and/or regulations of the Louisiana Department of Wildlife and Fisheries.

NOTE: The State of Louisiana does hereby reserve, and this lease shall be subject to, the imprescriptible right of surface use in the nature of a servitude in favor of the Department of Natural Resources, including its Offices and Commissions, for the sole purpose of implementing, constructing, servicing and maintaining approved coastal zone management and/or restoration projects. Utilization of any and all rights derived under this lease by the mineral lessee, its agents, successors or assigns, shall not interfere with nor hinder the reasonable surface use by the Department of Natural Resources, its Offices or Commissions, as hereinabove reserved.

Applicant: Robert A. Schroeder, Inc.

Bidder	Cash Payment	Price / Acre	Rental	Oil	Gas	Other

BLOCK 47 MAIN PASS AREA, REVISED

SL 1268

SL 15906

Devon Energy Corp.
SL 14882

SL 16847

Kerr Mcgee Corp. P.O.B.
SL 1268 X = 2,664,850.00
Y = 266,080.00
NORTHEAST CORNER
OF BLOCK 52
EAST

LLOG
SL 1268

LLOG
SL 1268
2 P.B.H.

SL 16664

81.04 ACRES

SL 16661

Kerr Mcgee Corp.
Rosewood Resources
SL 1272

X = 2,663,577.00
Y = 265,058.10

Quintana Pet.
SL 12557

SL 14646

SL 16665

LLOG
SL 16664

SL 16666

LLOG
SL 16664

X = 2,662,451.01
Y = 263,171.09

WEST
441.33'

SL 13928
Linder Oil Co.

Kerr Mcgee Corp
SL 1272

KERR MCGEE
S.L. 1273

SL 16667

SL 16849

Pioneer Natl Res. Gpc Inc.

TR 33097
81.04+/- ACS
JAN., 2001

BLOCK 53

KERR MCGEE
S.L. 1273

BLOCK 52

SL 195

Gulf Oil
SL 195

Gulf Oil
SL 195

Gulf Oil
SL 195

Quintana Pet. Corp.
SL 11888

SL 11189

QUINTANA
S.L. 11188

SL 11188

BLOCK 52 MAIN PASS AREA, REVISED PLAQUEMINES PARISH, LOUISIANA

SCALE 1" = 2000' SEPT. 22, 2000

ALL COORDINATES, BEARINGS AND DISTANCES
ARE GRID, AND ARE ON THE LOUISIANA
LAMBERT PLANE COORDINATE SYSTEM,
SOUTH ZONE, 1927 NORTH AMERICAN
DATUM.



TRACT 33098 - PORTION OF BLOCK 52, MAIN PASS AREA, REVISED, Plaquemines Parish, Louisiana

All of the lands now or formerly constituting the beds and bottoms of all water bodies of every nature and description and all islands and other lands formed by accretion or reliction, except tax lands, belonging to the State of Louisiana and not under mineral lease on January 10, 2001, situated in Plaquemines Parish, Louisiana, and more particularly described as follows: Beginning at a point on the East line of Block 52, Main Pass Area, Revised, having Coordinates of X = 2,664,850.00 and Y = 257,700.00, said point also being on a western boundary of State of Louisiana - State Lease No. 11188; thence on and along said Western boundary of said State of Louisiana - State Lease No. 11188 the following courses and distances, to-wit: South 37 degrees 23 minutes 49 seconds West 4,420 feet to a point having Coordinates of X = 2,662,165.99 and Y = 254,188.54; and South 36 degrees 47 minutes 09 seconds East 4,482.79 feet to a point having Coordinates of X = 2,664,850.00 and Y = 250,598.36, said point also being the Southeast corner of said Block 52 and a point on a Northern boundary of State Lease No. 195, as amended; thence on and along said Northern boundary of said State of Louisiana - State Lease No. 195, as amended, the following courses and distances, to-wit: South 72 degrees 42 minutes 01 seconds West 1,110.19 feet to a point having Coordinates of X = 2,663,790.03 and Y = 250,268.22; North 46 degrees 50 minutes 35 seconds West 14,804.00 feet to a point having Coordinates of X = 2,652,990.75 and Y = 260,394.12; and South 89 degrees 00 minutes 25 seconds West 240.78 feet to a point having Coordinates of X = 2,652,750.00 and Y = 260,389.94; said point also being on an Eastern boundary of State of Louisiana - State Lease No. 14646; thence North 1,442.54 feet on and along said Eastern boundary of said State of Louisiana - State Lease No. 14646 to a point having Coordinates of X = 2,652,750.00 and Y = 261,832.48, said point also being on a Southern boundary of State of Louisiana - State Lease No. 16665; thence on and along the Southern, Eastern and Northern boundaries of said State of Louisiana - State Lease No. 16665, the following courses and distances, to-wit: North 82 degrees 10 minutes 43 seconds East 2,075.31 feet to a point having Coordinates of X = 2,654,806.00 and Y = 262,114.90; North 11 degrees 29 minutes 45 seconds West 1,766.23 feet to a point having Coordinates of X = 2,654,454.00 and Y = 263,845.70; and South 88 degrees 05 minutes 02 seconds West 1,704.95 feet to a point having Coordinates of X = 2,652,750.00 and Y = 263,788.69; said point also being on an Eastern boundary of said State of Louisiana - State Lease No. 14646; thence North 1,067.47 feet on and along said Eastern boundary of said State of Louisiana - State Lease No. 14646 to a point having Coordinates of X = 2,652,750.00 and Y = 264,856.16; said point also being on a Southern boundary of State of Louisiana - State Lease No. 16664; thence on and along the Southern and Western boundaries of said State of Louisiana - State Lease No. 16664, the following courses and distances, to-wit: North 87 degrees 38 minutes 44 seconds East 3,961.34 feet to a point having Coordinates of X = 2,656,708.00 and Y = 265,018.90; and South 02 degrees 59 minutes 38 seconds East 3,752.82 feet to a point having Coordinates of X = 2,656,904.00 and Y = 261,271.20, said point also being on a Western boundary of State of Louisiana - State Lease No. 16849; thence on and along the Western and Southern boundaries of said State of Louisiana - State Lease No. 16849, the following courses and distances, to-wit: South 02 degrees 59 minutes 38 seconds East 1,404.80 feet to a point having Coordinates of X = 2,656,977.37 and Y = 259,868.32, and South 82 degrees 29 minutes 12 seconds East 6,007.00 feet to a point having

Coordinates of X = 2,662,932.79 and Y = 259,082.86, said point also being on a Western boundary of said State of Louisiana - State Lease No. 16850; thence South 54 degrees 11 minutes 51 seconds East 2,363.89 feet on and along said Western boundary of said State of Louisiana - State Lease No. 16850 to the point of beginning, containing approximately 1,410.30 acres, as shown outlined in red on a plat on file in the Office of Mineral Resources, Department of Natural Resources, as provided by the applicant. All bearings, distances and coordinates are based on Louisiana Coordinate System of 1927 (South Zone).

NOTE: The boundary description and plat for this tract as shown and as advertised were supplied by the nominating party and have not been checked for accuracy by the staff of the Office of Mineral Resources. Anything which may affect the acreage, the shape or the location of the tract, such as non-closure of or incorrect X, Y coordinates or title disputed acreage, or which may affect the status of the tract for leasing, such as overlap of prior leases or nominated tracts, or which may affect potential operations on leases taken, such as inclusion in areas under the jurisdiction of the Department of Wildlife and Fisheries, will not be specifically determined unless and until a bid on this tract is accepted by the Mineral Board; which bid will be accepted on a per acre basis and which acceptance will be conditional upon such specific determinations being made. Once a bid is conditionally accepted by the Mineral Board, the staff will, within a period following the date of the lease sale, determine the acreage, shape and location of the potential lease area of the tract, the status for leasing of all or any portion thereof, and any conditions which may affect potential operations thereon. These determinations may render all or a portion of the bid area unleaseable or may increase or decrease the State claimed acreage such that the total bonus/rental ultimately required may either exceed the bonus/rental paid at the lease sale, which will require additional payment by the successful bidder, or allow the successful bidder a refund of excessive payment. The successful bidder will be notified of the determinations by the staff and given an opportunity to view the bid area acreage, configuration and location as it has been specifically determined. If all or a portion of the bid area is unleaseable due to overlap of an existing lease, the successful bidder will be given an opportunity to accept or reject a new lease on that portion of the bid area which is not unleaseable. If rejected, the bid and all monies accompanying the bid will be returned to the successful bidder and no lease will be issued. In all other cases a new lease will be issued and any additional per acre bonus/rental, 10% administration fee or \$10 and \$5 per acre fees due as a result of staff determination of more State acreage in the bid area than determined by the successful bidder will be paid prior to the lease being issued. A determination of less State acreage in the bid area will result in a return to the successful bidder of any overpayment.

NOTE: The above tract is located in or near an oyster restricted area and all operations in such area must be conducted in strict conformity with the stipulations and/or regulations of the Louisiana Department of Wildlife and Fisheries.

NOTE: The State of Louisiana does hereby reserve, and this lease shall be subject to, the imprescriptible right of surface use in the nature of a servitude in favor of the Department of Natural Resources, including its Offices and Commissions, for the sole purpose of implementing, constructing, servicing and maintaining approved coastal zone management and/or restoration projects. Utilization of any and all rights derived under this lease by the mineral lessee, its agents, successors or assigns, shall not interfere with nor hinder the reasonable surface use by the Department of Natural Resources, its Offices or Commissions, as hereinabove reserved.

Applicant: Robert A. Schroeder, Inc.

Bidder	Cash Payment	Price / Acre	Rental	Oil	Gas	Other

46

295

Quintana Pet. Sl 12557
SL 16661

SL 16667

KERR McGEE S.L. 1273
*5

BLOCK 53

* C-1

KERR McGEE S.L. 1273

QUINTANA S.L. 11188
*2

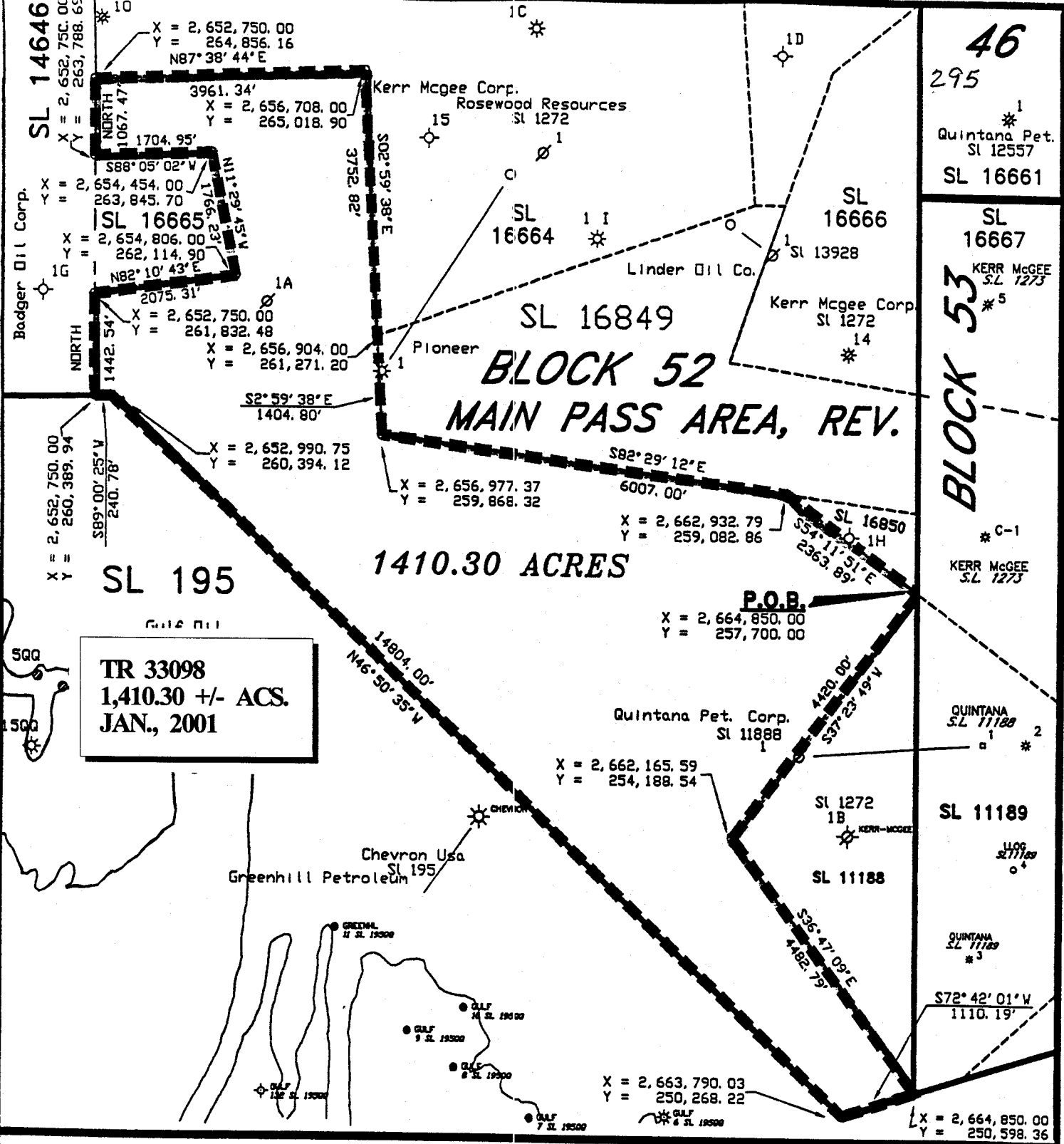
SL 11189

1409 S.L. 11189
*4

QUINTANA S.L. 11189
*3

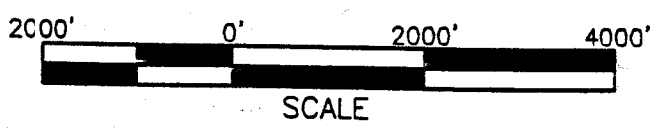
S72°42'01"W
1110.19'

X = 2,664,850.00
Y = 250,598.36



TR 33098
1,410.30 +/- ACS.
JAN., 2001

LOCATED IN
BLOCK 52
MAIN PASS AREA, REVISED
PLAQUEMINES PARISH, LOUISIANA
SCALE 1" = 2000' OCT. 19, 2000



ALL COORDINATES, BEARINGS AND DISTANCES
ARE GRID, AND ARE ON THE LOUISIANA
LAMBERT PLANE COORDINATE SYSTEM,
SOUTH ZONE, 1927 NORTH AMERICAN
DATUM.